



# FIFTH WHEELS

SABRE FIFTH WHEELS



**SUPERIOR CONSTRUCTION  
SUPREME LUXURY**







FIFTH WHEELS

SABRE FIFTH WHEELS



SUPERIOR CONSTRUCTION  
SUPREME LUXURY







# FIFTH WHEELS

*Sabre Fifth Wheels deliver amazing luxury, convenience and six-sided*







# FIFTH WHEELS

*Sabre Fifth Wheels deliver amazing luxury, convenience and six-sided*





aluminum super structure construction at an affordable price.



**34 CK05-6** This spacious kitchen has plenty of counter space and storage plus, a standard 39" TV and 12 Volt CD/DVD/AM/FM player with 5.1 surround sound. Options shown include a stainless steel appliance package, a 12 cu. ft. refrigerator, LG solid surface countertops with a goose neck pull-out faucet and electric fireplace.



**34 CK05-6** All Sabre fifth wheels feature washer/dryer prep in bedroom, a hardwood dresser with full extension drawer glides and no step bedroom access. Shown in Mink décor.



**34 CK05-6** Sabre bathrooms have a large bathroom sink with cover, soap dish and tooth brush holder. Options shown include a 48" x 30" fiberglass shower with built-in seat and a three piece glass door.



**33 RKTS-6** This new Sabre floorplan is standard equipped with two eight cu. ft. refrigerators and a huge walk-in pantry. Shown in Pebble décor.

**34 CK05-6** Comes complete with arched ceilings, LED lighting throughout, hard wood slide out fascia and a 22" oven with flush mounted glass range cover. Options include a stainless steel appliance package, 12 cu. ft. refrigerator, LG solid surface countertops, ceiling fan, and renewed leather recliners. Shown in Mink décor.



aluminum super structure construction at an affordable price.



**34 CKQS-6** This spacious kitchen has plenty of counter space and storage plus, a standard 39" TV and 12 Volt CD/DVD/AM/FM player with 5.1 surround sound. Options shown include a stainless steel appliance package, a 12 cu. ft. refrigerator, LG solid surface countertops with a goose neck pull-out faucet and electric fireplace.



**34 CKQS-6** All Sabre fifth wheels feature washer/dryer prep in bedroom, a hardwood dresser with full extension drawer glides and no step bedroom access. Shown in Mink décor.

**34 CKQS-6**  
Comes complete with arched ceilings, LED lighting throughout, hard wood slide out fascia and a 22" oven with flush mounted glass range cover. Options include a stainless steel appliance package, 12 cu. ft. refrigerator, LG solid surface countertops, ceiling fan, and renewed leather recliners. Shown in Mink décor.



**34 CKQS-6** Sabre bathrooms have a large bathroom sink with cover, soap dish and tooth brush holder. Options shown include a 48" x 30" fiberglass shower with built-in seat and a three piece glass door.



**33 RKTS-6**  
This new Sabre floorplan is standard equipped with two eight cu. ft. refrigerators and a huge walk-in pantry. Shown in Pebble décor.





# FIFTH WHEELS



### 36 Q52B-7

*This spacious slide bedroom's standards include hardwood fascia, headboard, smoked glass wardrobe doors and reading lights. This full-sized residential queen bed is shown with an optional Serta mattress in Pewter décor.*



**36 Q52B-7** Comes complete with arched ceilings, a 39" TV and 12 Volt CD/DVD/ AM/FM player with 5.1 surround sound. Options include LG solid surface countertops, a ceiling fan and an electric fireplace. Shown in Pewter décor.



Optional tri-fold sofa



Optional free standing dinette with leaf extension and flip-up storage (Standard on some models.)



39" HD LCD TV, CD/DVD/AM/FM/player with 5.1 Dolby surround sound and Blue Tooth technology





# FIFTH WHEELS



### 36 QS2B-7

*This spacious slide bedroom's standards include hardwood fascia, headboard, smoked glass wardrobe doors and reading lights. This full-sized residential queen bed is shown with an optional Serta mattress in Pewter décor.*



**36 QS2B-7** Comes complete with arched ceilings, a 39" TV and 12 Volt CD/DVD/ AM/FM player with 5.1 surround sound. Options include LG solid surface countertops, a ceiling fan and an electric fireplace. Shown in Pewter décor.



Optional tri-fold sofa



Optional free standing dinette with leaf extension and flip-up storage (Standard on some models.)



39" HD LCD TV, CD/DVD/AM/FM/player with 5.1 Dolby surround sound and Blue Tooth technology



# SUPERIOR SABRE FEATURES



Full extension drawers



Eight cu. ft. Dometic® refrigerator



Optional LG Solid Surface countertop, sink lids and backsplash with goose neck pull out sprayer and under mount Stonecast sink



Steel belted radial tires shown with optional aluminum wheels



PlatTTform™ slide-out floors are moisture resistant



Optional Eureka Central Vacuum System



Cell phone charging/organizer station



Slam-latch luggage door shown on coach with Platinum Edition option



Optional JT's strong arm jack stabilizers



LP quick disconnect



Optional flip-down bike/utility rack



Washer/dryer closet



Whole system water filtration

12" Fantastic® fan

Battery disconnect



Aerodynamic fiberglass front cap with LED hitch pin and marker lights



Optional Trailair Rota Flex rubberized pinbox



Porcelain toilet with foot pedal and "power flush" jets



Drawers with full extension drawer glides for under bed storage



Exterior convenience center includes Within Reach water heater bypass valve, E-Z winterize valve, hot and cold exterior shower, black tank flush, 110V outlet plus cable and satellite hook-up



# SUPERIOR SABRE FEATURES



Full extension drawers



Eight cu. ft. Dometic® refrigerator



Optional LG Solid Surface countertop, sink lids and backsplash with goose neck pull out sprayer and under mount Stonecast sink



Steel belted radial tires shown with optional aluminum wheels



PlatTform™ slide-out floors are moisture resistant



Optional Eureka Central Vacuum System



Cell phone charging/organizer station



Slam-latch luggage door shown on coach with Platinum Edition option



Optional JT's strong arm jack stabilizers



LP quick disconnect



Optional flip-down bike/utility rack



Washer/dryer closet



Whole system water filtration

12" Fantastic® fan

Battery disconnect



Aerodynamic fiberglass front cap with LED hitch pin and marker lights



Optional Trailair Rota Flex rubberized pinbox



Porcelain toilet with foot pedal and "power flush" jets



Drawers with full extension drawer glides for under bed storage

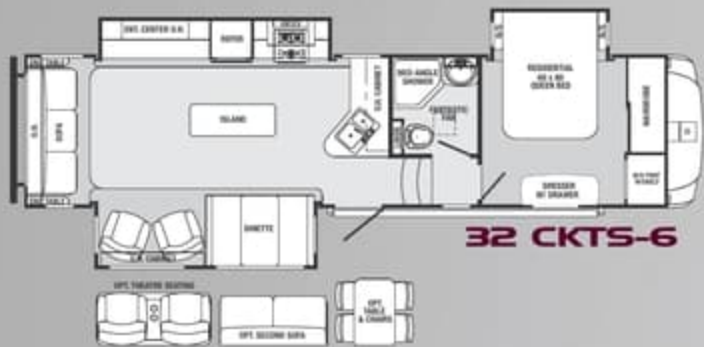


Exterior convenience center includes Within Reach water heater bypass valve, E-Z winterize valve, hot and cold exterior shower, black tank flush, 110V outlet plus cable and satellite hook-up

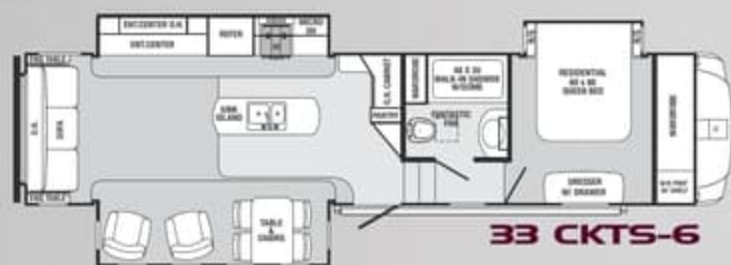




# FIFTH WHEELS



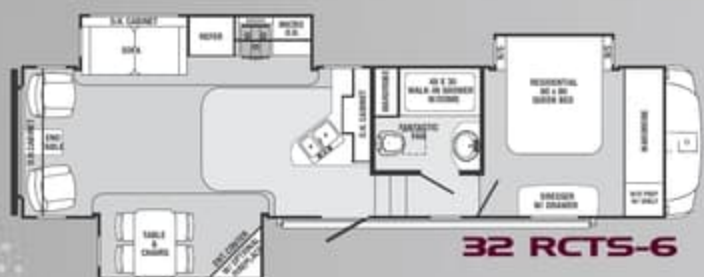
32 CKTS-6



33 CKTS-6



34 REQS-6



32 RCTS-6



33 RKTS-6



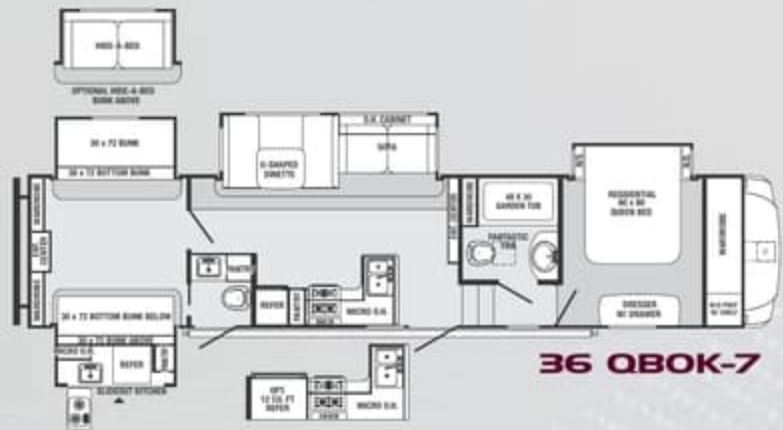
35 QSIK-6



33 BHOK-6



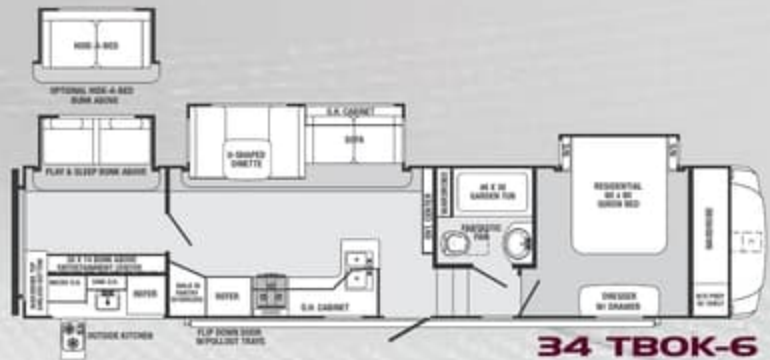
34 CKQS-6



36 QBOK-7



33 RETS-6



34 TBOK-6

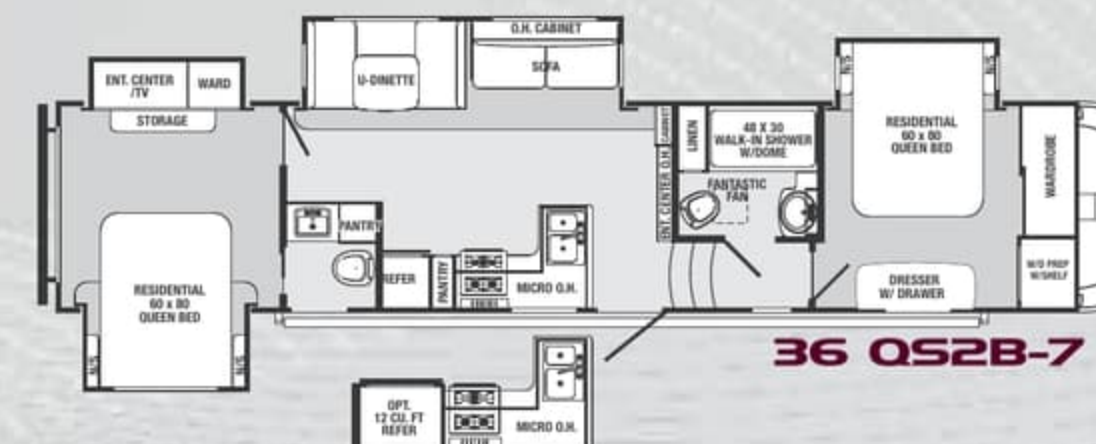
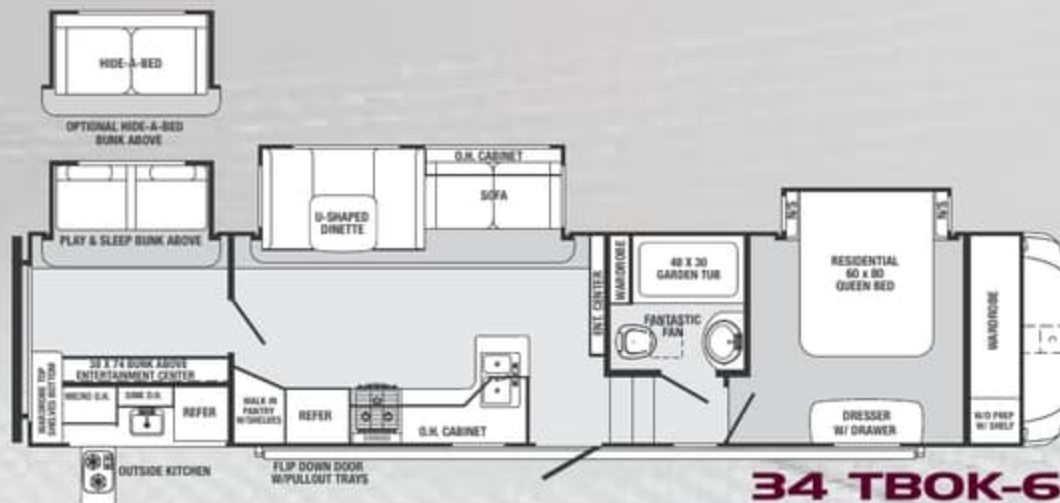
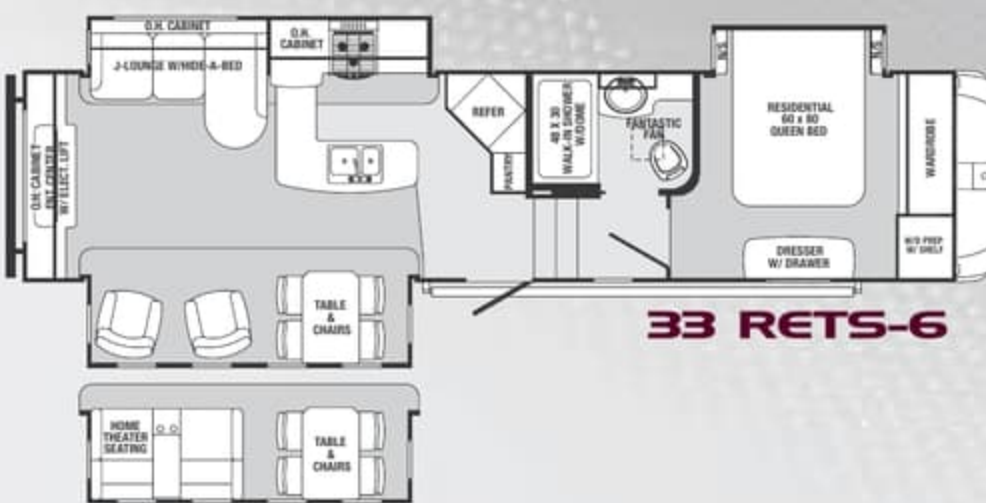
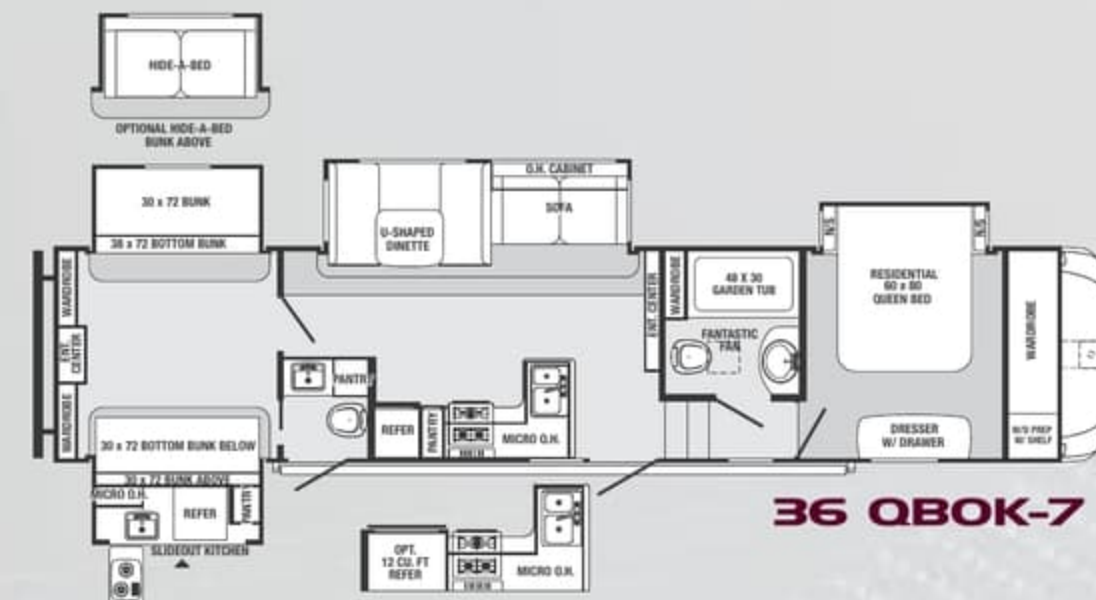
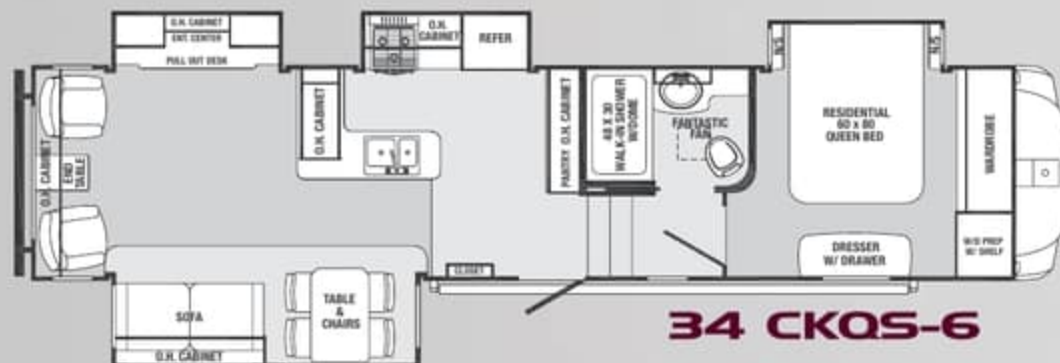
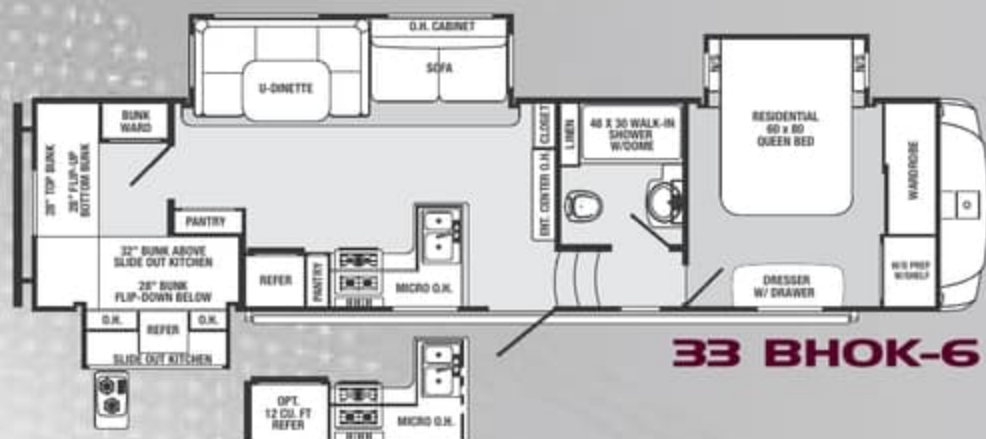
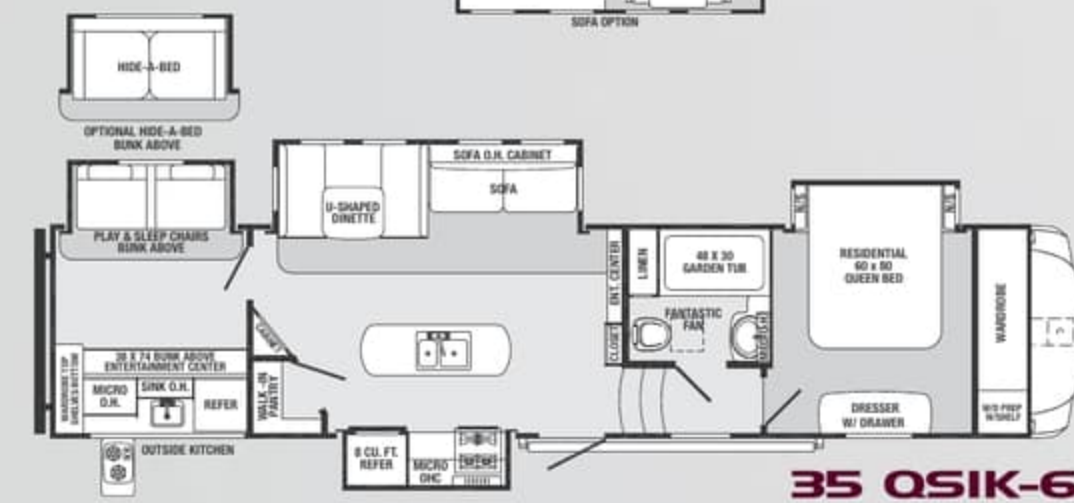
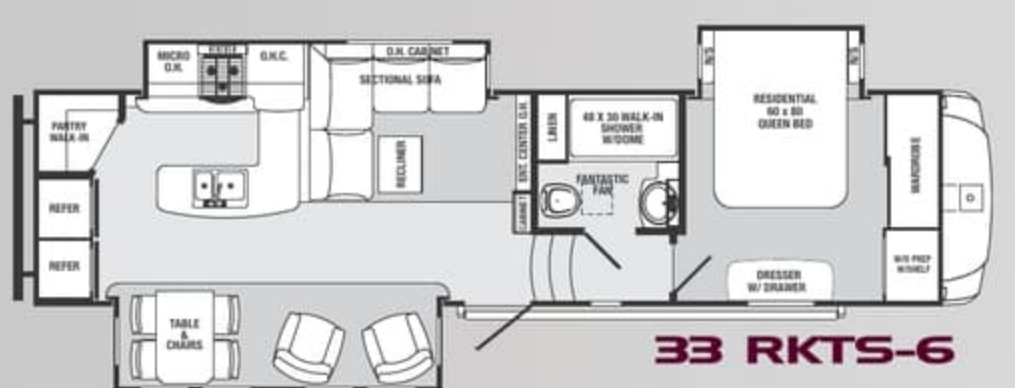
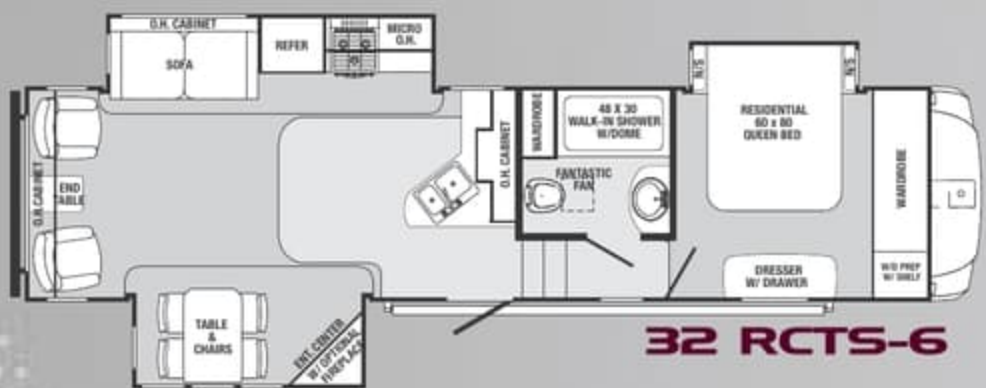
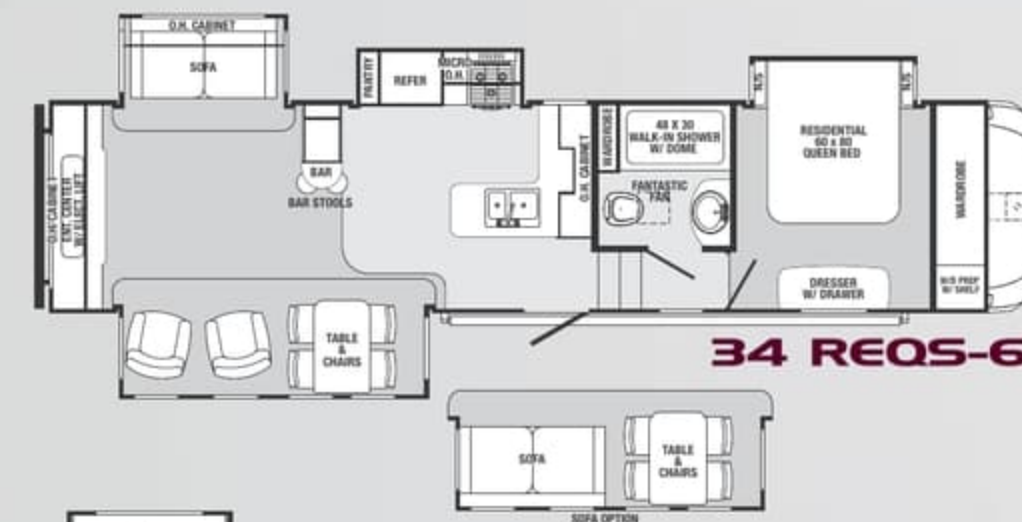
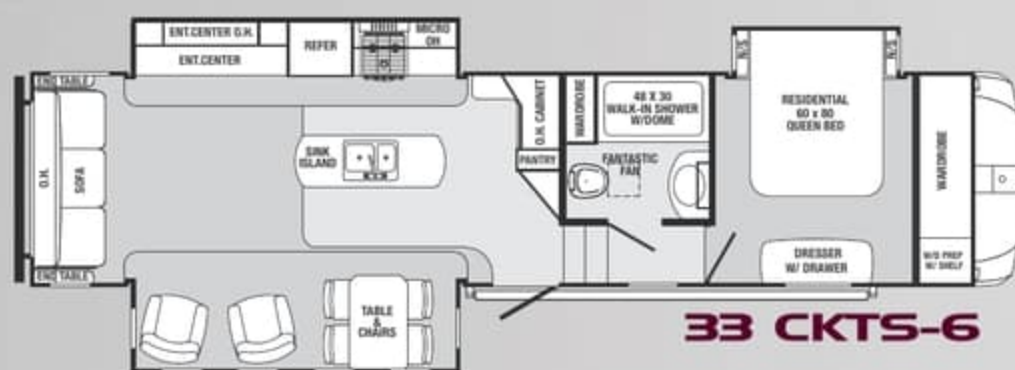
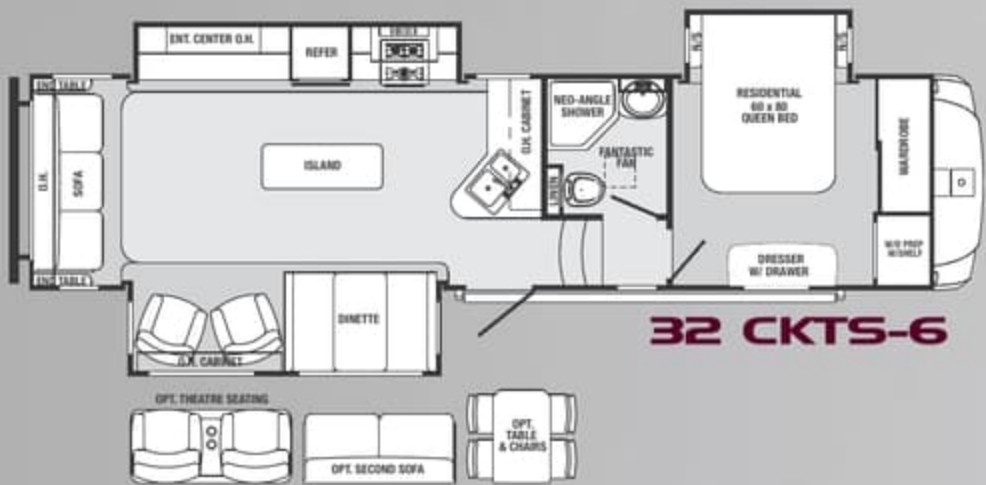


36 Q52B-7





# FIFTH WHEELS





MODEL	32 CKTS	32 RCTS	33 BHOK	33 RETS	33 CKTS	33 RKTS	34 CKQS	34 TBOK	34 REQS	35 QSIK	36 QBOK	36 Q52B
Hitch Weight	2183	1921	1944	1915	1990	1760	1793	1827	1880	2065	1865	2098
Axle Weight	8205	8394	8858	8767	8809	8500	9237	8592	8974	9375	9551	9562
Dry Ship Weight	10388	10315	10802	10682	10799	10260	11030	10419	10854	11440	11416	11660
GVWR	13238	13165	13274	13532	13649	13110	13793	13269	13704	14065	14666	14638
CCC (Cargo Cap.)	2800	2800	2422	2800	2800	2800	2713	2800	2800	2575	3200	2928
Exterior Length	36' 10"	36' 2"	37' 6"	38' 1"	38' 0"	37' 0"	38' 1"	40' 8"	39' 0"	40' 10"	41' 11"	41' 11"
Exterior Height	12' 6"	12' 7"	12' 8"	12' 6"	12' 7"	13' 0"	12' 7"	12' 11"	12' 8"	12' 10"	13' 0"	13' 1"
Fresh Water (Gal.)	50	50	50	50	50	50	50	50	50	50	50	50
Black Water (Gal.)	42	42	42	42	42	42	42	42	42	42	84	84
Grey Water (Gal.)	84	84	84	84	84	84	84	126	84	126	126	84
Tire Size (In)	16"	16"	16"	16"	16"	16"	16"	16"	16"	16"	16"	16"
Awning Size	15'	17'	18'	17'	17'	15'	21'	21'	17'	17'	21'	21'

## FIFTH WHEEL STANDARD FEATURES AND OPTIONS

### KITCHEN

Large 8 Cu. Ft. Dometic® Refrigerator	S
Residential-style, Self-Edged Countertop	S
Residential American Stonecast Sink, Under-Mount: Withstands 450 Degrees	S
Pull-out Faucet w/Sprayer	S
Food Grade Sink Cover & Cutting Board	S
Full Extension Drawers	S
Ball Bearing Roller Guides	S
Residential Size Overhead Cabinets	S
Microwave	S
Glass Flush Mount Range Cover	S
22" Oven	S
Installed Conveniences: Spice Rack & Silverware Drawer	S
Residential Size Trash Can	S
Residential Size Pantry	S
110V Outlets (Dinette & Sofa Area)	S
Aluminum Framed Dinette Bases w/Plywood Seat Bases	S
Solid Surface Galley Countertop By LG®	O
Solid Surface Galley Extension By LG®	O
Free Standing Dinette w/Leaf Extension & Flip-up Storage (Chairs include seat storage)	O
Stainless Steel Appliance Package	O
12 Cu. Ft. Side-By-Side Refrigerator	O

### BATHROOM

12" Fantastic, 3 Speed, High Capacity Fan	SF
Sky Dome Over Shower	S
34" Neo-Angle Shower w/Glass Enclosure & Integrated Towel Bar (32CKTS)	S
48" X 30" Residential Shower w/Built-In Seat (W/A)	S
48" X 30" 8" Tub (34 TBOK, 35 QSIK & 36 QBOK)	S
48" X 30" Fiberglass Shower & Seat (Most Models)	O
Waterproof Shower Light	S
Residential American Stonecast Sink, Under-mount: withstands 450 Degrees	S
Sink Cover	S
Residential-style, Wood Medicine Cabinet	S
Porcelain Toilet w/Foot Flush & "Power Flush Jets"	S
Installed Conveniences: Towel Ring, Soap Dish & Toothbrush Holder	S

Heat Vent (All bathrooms)	S
Air Conditioning Vent (All bathrooms)	S

### BEDROOM

Quilted Bedspread w/(2) Pillow Shams	S
Residential Sized Chest Of Drawers w/Ball Bearing Guides	S
Prewired For Bedroom TV	S
Deluxe Pillow Top 60" X 80" Queen	S
Serta 60" x 80" Queen Mattress	O
Serta 70" x 80" King Mattress W/A	O
Bedside Night Stand Shelves (Most models)	S
Convenient 110V Outlet (By each night stand)	S
Dual Reading Lights Over Bed	S
Smoked Glass Sliding Wardrobe Doors	S
"Shoe Shelf" In Front Wardrobe	S
Pull-Out Drawers Under Bed Storage (Most models)	S
HD LCD TV	O

### AUDIO & VIDEO

39" Name Brand HD LCD TV (Living room)(W/A)	S
Digital TV Antenna w/Amplifier Booster	HF
Learning Remote (Capable Of Controlling TV, Cable)	HF
200 Watt CD/DVD/AM/FM Player w/5.1 Surround Sound (12V for dry camping)	HF
True Five Speaker Surround Sound System w/Subwoofer	HF
Stereo (Includes weather band)	HF
Stereo Inputs (3.5 mm Audio, SD Card & USB)	HF
(2) Bedroom Speakers	HF
(2) Marine Grade Exterior Patio Speakers	HF
Antenna/Cable Hook-up w/110V & 12V Outlets In Pass Through Compartment	HF
RG-6 Satellite Prep	S
Satellite & Cable Hook-Up	S
Exterior Antenna For AM/FM Radio	S
Slide-out TV (Baggage area)	O

### UTILITIES

Whole System Water Filtration	SF
35,000 BTU Furnace w/Automatic Ignition	SF
10 Gal. DSI Gas/Electric Water Heater w/16.2 Gallons Per Hour Quick Recovery	SF
"With In Reach" Water Heater Bypass Valve	S
Easy Siphon Winterize Valve	S
Independent Electric Slide-Outs	S

Convenience Center For Hook-Ups (Includes Hot & Cold Exterior Shower)	S
High Capacity In-floor Heat Ducting	S
13,500 BTU Air Conditioner w/Quick Cool Dump	S
Digital Thermostat	S
55 Amp Power Converter w/Smart Fan Cooling	S
Washer/Dryer Combo Ready	S
Battery Disconnect Switch	S
30 Amp Service w/Detachable Marine Power Cord	S
Command Center w/Tank Monitor Enclosed In Cabinet (Most models)	S
Black Tank Flush	S
12 Gal. DSI Gas/Electric Water Heater	O
15,000 Btu Air Conditioner W/Quick Cool	O
50 Amp Service w/2nd Air Conditioner Ready w/Detachable Marine Power Cord	O
5-Function Analog Remote	O

### EXTERIOR

Aerodynamic Fiberglass Front Cap w/LED Hitch Light & LED Marker Lights	S
6-Sided Welded Aluminum Structure: Sidewalls, Rear Wall, Front Wall, Floor, Roof, Slide-Outs	SC
Attic Vents For Roof Ventilation	S
Heated & Enclosed Underbelly	SC
Concealed Spare Tire	SF
Slam-latch Luggage Doors	S
Full Aluminum Radius Wrap On Lower Walls	S
Quick Release Snap Jack Pins Mounted Forward	S
Rear Roof Ladder	S
A&E Electric Awning w/Adjustable Arms & LED Lights	S
(2) Patio Safety Lights	S
Security Step Light At Main Entrance	S
Nitrous Filled Steel Belted Radial Tires w/Roadside Assistance	S
Axles w/Super Lube® Bearing System	S
Electric Powered Front Jacks	S
Deep Tint Safety Glass Windows	S
30" Entry Door (Most models)	S
Oversized Fold-away Entry Door Handle	S
Switchable Interior Light (At luggage doors)	S
Outside LP Gas Hook-Up w/Quick Connect	S
Crank-Down Stabilizer Jacks	S

Flexible 4" Rain Spouts	S
Trail Air® Equa-Flex™ Suspension	O
Flip-Down Bike/Utility Rack w/450 Lb. Capacity	O
Electric Stabilizer Jacks	O
6000 Lb. Axles	S
Trailair Rota Flex Pin Box	O
JT Strong Arm Stabilizers (Front Jacks only)	O
Slide-Out Toppers	O
Radiant Technology Insulation (Roof only)	O
Platinum Edition Exterior	O

### INTERIOR

2 1/2" Cathedral Arched Roof Rafters	S
LED Lights; Pancake & Recessed Throughout	S
Eureka Central Vacuum	O
Reclining Home Theater Seating (Putty & Cocoa colors)(W/A)	O
Top Cabinet Doors: Solid Hardwood	S
Lower Cabinet Doors: Solid Hardwood	S
Teflon Spacers On Cabinet Doors (Prevent warping, bending & cracking)	S
Cabinet Face Frames Are Screwed (Not stapled together)	S
Residential Beauflor® Linoleum w/7 Year Cold-Crack Warranty	S
Residential Shaw® Nylon Carpet w/R2x Carpet Pad	S
Residential Ball Bearing Drawer Guides	S
Flush Floor Slide Rooms In Living Area w/6'1" Interior Height	S
Day/Night Shades Throughout Living Area	S
Cell Phone Charging/Organizer Station	S
Swivel Rocker Chair(s) (Per Floorplan)	S
Upgraded Hardwood Slide-out Fascia Throughout	S
Hardwood Step Treads To Bedroom/Bathroom	S
Electric Fireplace (Select models)	O
La-Z-Boy® Recliner IPO Swivel Rocker Chair	O
Euro Style Recliner IPO Swivel Rocker Chair	O
La-Z-Boy Hide-A-Bed	O
La-Z-Boy Renewed Leather Recliners IPO Swivel Rockers	O
Tri-fold Sleeper Sofa	O
Beauflor® Linoleum, Plank Wood Pattern w/7 Year Cold-Crack Warranty	O
Ceiling Fan	O

**DECOR** Select your favorite from five designer fabric choices



**MINK**



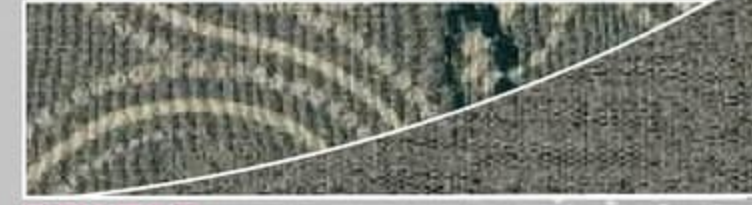
**BARK**



**PEBBLE**



**KHAKI**



**PEWTER**



MODEL	32 CKTS	32 RCTS	33 BHOK	33 RETS	33 CKTS	33 RKTS	34 CKQS	34 TBOK	34 REOS	35 OSIK	36 QBOK	36 OS2B
Hitch Weight	2183	1921	1944	1915	1990	1760	1793	1827	1880	2065	1865	2098
Axle Weight	8205	8394	8858	8767	8809	8500	9237	8592	8974	9375	9551	9562
Dry Ship Weight	10388	10315	10802	10682	10799	10260	11030	10419	10854	11440	11416	11660
GVWR	13238	13165	13274	13532	13649	13110	13793	13269	13704	14065	14666	14638
CCC (Cargo Cap.)	2800	2800	2422	2800	2800	2800	2713	2800	2800	2575	3200	2928
Exterior Length	36' 10"	36' 2"	37' 6"	38' 1"	38' 0"	37' 0"	38' 1"	40' 8"	39' 0"	40' 10"	41' 11"	41' 11"
Exterior Height	12' 6"	12' 7"	12' 8"	12' 6"	12' 7"	13' 0"	12' 7"	12' 11"	12' 8"	12' 10"	13' 0"	13' 1"
Fresh Water (Gal.)	50	50	50	50	50	50	50	50	50	50	50	50
Black Water (Gal.)	42	42	42	42	42	42	42	42	42	42	84	84
Grey Water (Gal.)	84	84	84	84	84	84	84	126	84	126	126	84
Tire Size (In)	16"	16"	16"	16"	16"	16"	16"	16"	16"	16"	16"	16"
Awning Size	15'	17'	18'	17'	17'	15'	21'	21'	17'	17'	21'	21'

## FIFTH WHEEL STANDARD FEATURES AND OPTIONS

### KITCHEN

Large 8 Cu. Ft. Dometic® Refrigerator	S
Residential-style, Self-Edged Countertop	S
Residential American Stonecast Sink, Under-Mount: Withstands 450 Degrees	S
Pull-out Faucet w/Sprayer	S
Food Grade Sink Cover & Cutting Board	S
Full Extension Drawers	S
Ball Bearing Roller Guides	S
Residential Size Overhead Cabinets	S
Microwave	S
Glass Flush Mount Range Cover	S
22" Oven	S
Installed Conveniences: Spice Rack & Silverware Drawer	S
Residential Size Trash Can	S
Residential Size Pantry	S
110V Outlets (Dinette & Sofa Area)	S

Aluminum Framed Dinette Bases w/Plywood Seat Bases	S
Solid Surface Galley Countertop By LG®	O
Solid Surface Galley Extension By LG®	O
Free Standing Dinette w/Leaf Extension & Flip-up Storage (Chairs include seat storage)	O
Stainless Steel Appliance Package	O
12 Cu. Ft. Side-By-Side Refrigerator	O

### BATHROOM

12" Fantastic, 3 Speed, High Capacity Fan	SF
Sky Dome Over Shower	S
34" Neo-Angle Shower w/Glass Enclosure & Integrated Towel Bar (32CKTS)	S
48" X 30" Residential Shower w/Built-In Seat (W/A)	S
48" X 30" 8" Tub (34 TBOK, 35 QSİK & 36 QBOK)	S
48" X 30" Fiberglass Shower & Seat (Most Models)	O
Waterproof Shower Light	S
Residential American Stonecast Sink, Under-mount: withstands 450 Degrees	S
Sink Cover	S
Residential-style, Wood Medicine Cabinet	S
Porcelain Toilet w/Foot Flush & "Power Flush Jets"	S
Installed Conveniences: Towel Ring, Soap Dish & Toothbrush Holder	S

Heat Vent (All bathrooms)	S
Air Conditioning Vent (All bathrooms)	S

### BEDROOM

Quilted Bedspread w/(2) Pillow Shams	S
Residential Sized Chest Of Drawers w/Ball Bearing Guides	S
Prewired For Bedroom TV	S
Deluxe Pillow Top 60" X 80" Queen	S
Serta 60" x 80" Queen Mattress	O
Serta 70" x 80" King Mattress W/A	O
Bedside Night Stand Shelves (Most models)	S
Convenient 110V Outlet (By each night stand)	S
Dual Reading Lights Over Bed	S
Smoked Glass Sliding Wardrobe Doors	S
"Shoe Shelf" In Front Wardrobe	S
Pull-Out Drawers Under Bed Storage (Most models)	S
HD LCD TV	O

### AUDIO & VIDEO

39" Name Brand HD LCD TV (Living room)(W/A)	S
Digital TV Antenna w/Amplifier Booster	HF
Learning Remote (Capable Of Controlling TV, Cable)	HF
200 Watt CD/DVD/AM/FM Player w/5.1 Surround Sound (12V for dry camping)	HF
True Five Speaker Surround Sound System w/Subwoofer	HF
Stereo (Includes weather band)	HF
Stereo Inputs (3.5 mm Audio, SD Card & USB)	HF
(2) Bedroom Speakers	HF
(2) Marine Grade Exterior Patio Speakers	HF
Antenna/Cable Hook-up w/110V & 12V Outlets In Pass Through Compartment	HF
RG-6 Satellite Prep	S
Satellite & Cable Hook-Up	S
Exterior Antenna For AM/FM Radio	S
Slide-out TV (Baggage area)	O

### UTILITIES

Whole System Water Filtration	SF
35,000 BTU Furnace w/Automatic Ignition	SF
10 Gal. DSI Gas/Electric Water Heater w/16.2 Gallons Per Hour Quick Recovery	SF
"With In Reach" Water Heater Bypass Valve	S
Easy Siphon Winterize Valve	S
Independent Electric Slide-Outs	S

Convenience Center For Hook-Ups (Includes Hot & Cold Exterior Shower)	S
High Capacity In-floor Heat Ducting	S
13,500 BTU Air Conditioner w/Quick Cool Dump	S
Digital Thermostat	S
55 Amp Power Converter w/Smart Fan Cooling	S
Washer/Dryer Combo Ready	S
Battery Disconnect Switch	S
30 Amp Service w/Detachable Marine Power Cord	S
Command Center w/Tank Monitor Enclosed In Cabinet (Most models)	S
Black Tank Flush	S
12 Gal. DSI Gas/Electric Water Heater	O
15,000 Btu Air Conditioner W/Quick Cool	O
50 Amp Service w/2nd Air Conditioner Ready w/Detachable Marine Power Cord	O
5-Function Analog Remote	O

### EXTERIOR

Aerodynamic Fiberglass Front Cap w/LED Hitch Light & LED Marker Lights	S
6-Sided Welded Aluminum Structure: Sidewalls, Rear Wall, Front Wall, Floor, Roof, Slide-Outs	SC
Attic Vents For Roof Ventilation	S
Heated & Enclosed Underbelly	SC
Concealed Spare Tire	SF
Slam-latch Luggage Doors	S
Full Aluminum Radius Wrap On Lower Walls	S
Quick Release Snap Jack Pins Mounted Forward	S
Rear Roof Ladder	S
A&E Electric Awning w/Adjustable Arms & LED Lights	S
(2) Patio Safety Lights	S
Security Step Light At Main Entrance	S
Nitrous Filled Steel Belted Radial Tires w/Roadside Assistance	S
Axles w/Super Lube® Bearing System	S
Electric Powered Front Jacks	S
Deep Tint Safety Glass Windows	S
30" Entry Door (Most models)	S
Oversized Fold-away Entry Door Handle	S
Switchable Interior Light (At luggage doors)	S
Outside LP Gas Hook-Up w/Quick Connect	S
Crank-Down Stabilizer Jacks	S

Flexible 4" Rain Spouts	S
Trail Air® Equa-Flex™ Suspension	O
Flip-Down Bike/Utility Rack w/450 Lb. Capacity	O
Electric Stabilizer Jacks	O
6000 Lb. Axles	S
Trailair Rota Flex Pin Box	O
JT Strong Arm Stabilizers (Front Jacks only)	O
Slide-Out Toppers	O
Radiant Technology Insulation (Roof only)	O
Platinum Edition Exterior	O

### INTERIOR

2 1/2" Cathedral Arched Roof Rafters	S
LED Lights; Pancake & Recessed Throughout	S
Eureka Central Vacuum	O
Reclining Home Theater Seating (Putty & Cocoa colors)(W/A)	O
Top Cabinet Doors: Solid Hardwood	S
Lower Cabinet Doors: Solid Hardwood	S
Teflon Spacers On Cabinet Doors (Prevent warping, bending & cracking)	S
Cabinet Face Frames Are Screwed (Not stapled together)	S
Residential Beauflor® Linoleum w/7 Year Cold-Crack Warranty	S
Residential Shaw® Nylon Carpet w/R2x Carpet Pad	S
Residential Ball Bearing Drawer Guides	S
Flush Floor Slide Rooms In Living Area w/6'1" Interior Height	S
Day/Night Shades Throughout Living Area	S
Cell Phone Charging/Organizer Station	S
Swivel Rocker Chair(s) (Per Floorplan)	S
Upgraded Hardwood Slide-out Fascia Throughout	S
Hardwood Step Treads To Bedroom/Bathroom	S
Electric Fireplace (Select models)	O
La-Z-Boy® Recliner IPO Swivel Rocker Chair	O
Euro Style Recliner IPO Swivel Rocker Chair	O
La-Z-Boy Hide-A-Bed	O
La-Z-Boy Renewed Leather Recliners	O
IPO Swivel Rockers	O
Tri-fold Sleeper Sofa	O
Beauflor® Linoleum, Plank Wood Pattern w/7 Year Cold-Crack Warranty	O
Ceiling Fan	O

**DECOR** Select your favorite from five designer fabric choices



**MINK**



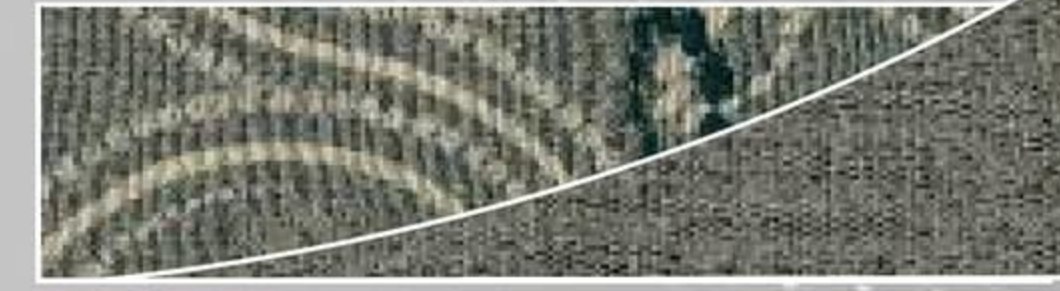
**BARK**



**PEBBLE**



**KHAKI**



**PEWTER**



# TRUE SIX-SIDED ALUMINUM CONSTRUCTION



## PRE-DELIVERY INSPECTION FACILITY

20,000 square feet of quality assurance. The bare essentials for a premium product. This state-of-the-art facility gives immediate daily feedback to production for quality assurance in every unit built.

## 24/7 EMERGENCY ROADSIDE ASSISTANCE

For a worry-free ownership experience Forest River includes one

# Coach-Net<sup>®</sup>

RV Technical & Roadside Assistance

year of Coach-Net RV Technical & Roadside Assistance with each RV purchase. Whether new to the RV lifestyle or an experienced RV enthusiast, Forest River owners have 24/7 access to technical, operational and emergency road service coverage throughout the US & Canada. Coach-Net's fast, dependable service is just a phone call away.



Forest River, Inc. encourages our customers to purchase their Forest River products from a local dealership whenever possible for the following reasons:

- 1) Forest River, Inc. dealers are independently owned and operated businesses so priority service and scheduling is at their discretion and is often provided to customers that purchased their unit at that dealership.
- 2) Purchasing locally allows customers to establish meaningful relationships with a dealer, enhancing the RV experience through assistance with product questions, user tips or RV regulations for your state or country, and much more!
- 3) Canadian customers must meet requirements to bring an RV purchased out of the country to their home. These requirements may involve additional inspections and certifications, taxes and fees. Your local Canadian Dealer is a professional at meeting these requirements.
- 4) Scheduling timely warranty repairs and adjustments through a local dealership provides far greater flexibility and convenience to you, the customer!

It is the goal of Forest River, Inc. that all of our RV owners fully enjoy the RV experience and that customer satisfaction meets or exceeds their expectations!

## SIDEWALL CONSTRUCTION (R-9)

- Hi-Gloss Gel-Coated Fiberglass including Compartment Doors
- 1/8" Lauan Backer
- 2nd 1/8" Lauan Backer with Staggered Seams
- Welded Aluminum Wall Studs
- High Density Solid Block Foam Insulation
- 1/8" Interior Decorative Board

## ROOF CONSTRUCTION (R-14) + (R-14)

- Vented Attic
- One-Piece EPDM Rubber Roof with 12 Year Warranty
- 3/8" Roof Decking
- EcoBatt Glasswool Insulation (R-14)
- Aluminum Wrapped AC Duct
- 4-1/4" Tapered Aluminum Roof Trusses
- 1/8" Decorative Ceiling Board
- Optional Radiant Technology Insulation (R-14)

## FLOOR CONSTRUCTION (R-14) + (R-14)

- 5/8" Seamless Dyna Stan Floor Decking with Limited Lifetime Warranty
- Welded Aluminum Floor
- Large-Capacity Heat Duct Plenum
- EcoBatt Glasswool Insulation (R-14)
- DARCO Wrapped Main Floor Moisture Barrier
- Tanks Wrapped in Heat Reflective Insulation (R-14)
- Corrugated, Puncture Resistant Underbelly



## 33 RETS-6

Sabre Fifth Wheels are built to last with true, six-sided aluminum construction



Sabre by Palomino Forest River, Inc.  
2412 Century Drive ■ Goshen, IN 46528  
(269) 432-3271 ■ www.palominorv.com



FIFTH WHEELS  
YOUR SABRE DEALER



Learn More  
Scan this barcode using a QR Reader on your smart phone to learn more about Forest River.



A Berkshire Hathaway company.

All illustrations and specifications contained in this literature are based on the latest product information at the time of publication. Forest River, Inc. reserves the right to make changes in prices, colors, materials, equipment and specifications at anytime, without notice, and assumes no responsibility for any error in this literature. All weights shown are approximate. All units are shipped F.O.B. point of manufacture. ©2013 Forest River, Inc. Sabre 5/14



# TRUE SIX-SIDED ALUMINUM CONSTRUCTION



## PRE-DELIVERY INSPECTION FACILITY

20,000 square feet of quality assurance. The bare essentials for a premium product. This state-of-the-art facility gives immediate daily feedback to production for quality assurance in every unit built.

## 24/7 EMERGENCY ROADSIDE ASSISTANCE

For a worry-free ownership experience

Forest River includes one

year of Coach-Net RV Technical & Roadside Assistance with each RV purchase. Whether new to the RV lifestyle or an experienced RV enthusiast, Forest River owners have 24/7 access to technical, operational and emergency road service coverage throughout the US & Canada.

Coach-Net's fast, dependable service is just a phone call away.

# Coach-Net<sup>®</sup>

RV Technical & Roadside Assistance



Forest River, Inc. encourages our customers to purchase their Forest River products from a local dealership whenever possible for the following reasons:

- 1) Forest River, Inc. dealers are independently owned and operated businesses so priority service and scheduling is at their discretion and is often provided to customers that purchased their unit at that dealership.
- 2) Purchasing locally allows customers to establish meaningful relationships with a dealer, enhancing the RV experience through assistance with product questions, user tips or RV regulations for your state or country, and much more!
- 3) Canadian customers must meet requirements to bring an RV purchased out of the country to their home. These requirements may involve additional inspections and certifications, taxes and fees. Your local Canadian Dealer is a professional at meeting these requirements.
- 4) Scheduling timely warranty repairs and adjustments through a local dealership provides far greater flexibility and convenience to you, the customer!

It is the goal of Forest River, Inc. that all of our RV owners fully enjoy the RV experience and that customer satisfaction meets or exceeds their expectations!

## SIDEWALL CONSTRUCTION (R-9)

- Hi-Gloss Gel-Coated Fiberglass including Compartment Doors
- 1/8" Lauan Backer
- 2nd 1/8" Lauan Backer with Staggered Seams
- Welded Aluminum Wall Studs
- High Density Solid Block Foam Insulation
- 1/8" Interior Decorative Board

## ROOF CONSTRUCTION (R-14) + (R-14)

- Vented Attic
- One-Piece EPDM Rubber Roof with 12 Year Warranty
- 3/8" Roof Decking
- EcoBatt Glasswool Insulation (R-14)
- Aluminum Wrapped AC Duct
- 4-1/4" Tapered Aluminum Roof Trusses
- 1/8" Decorative Ceiling Board
- Optional Radiant Technology Insulation (R-14)

## FLOOR CONSTRUCTION (R-14) + (R-14)

- 5/8" Seamless Dyna Stan Floor Decking with Limited Lifetime Warranty
- Welded Aluminum Floor
- Large-Capacity Heat Duct Plenum
- EcoBatt Glasswool Insulation (R-14)
- DARCO Wrapped Main Floor Moisture Barrier
- Tanks Wrapped in Heat Reflective Insulation (R-14)
- Corrugated, Puncture Resistant Underbelly



## 33 RETS-6

Sabre Fifth Wheels are built to last with true, six-sided aluminum construction



Sabre by Palomino Forest River, Inc.  
2412 Century Drive ■ Goshen, IN 46528  
(269) 432-3271 ■ www.palominorv.com



Learn More  
Scan this barcode using a QR Reader on your smart phone to learn more about Forest River.



A Berkshire Hathaway company.



FIFTH WHEELS  
YOUR SABRE DEALER

All illustrations and specifications contained in this literature are based on the latest product information at the time of publication. Forest River, Inc. reserves the right to make changes in prices, colors, materials, equipment and specifications at anytime, without notice, and assumes no responsibility for any error in this literature. All weights shown are approximate. All units are shipped F.O.B. point of manufacture.  
©2013 Forest River, Inc. Sabre 5/14