



CRUISER
SERIES
Home & Park
Motorhomes



CRUISER
SERIES
Home & Park
Motorhomes



Executive Cruiser Interior

Step into a new world of mobile living . . .

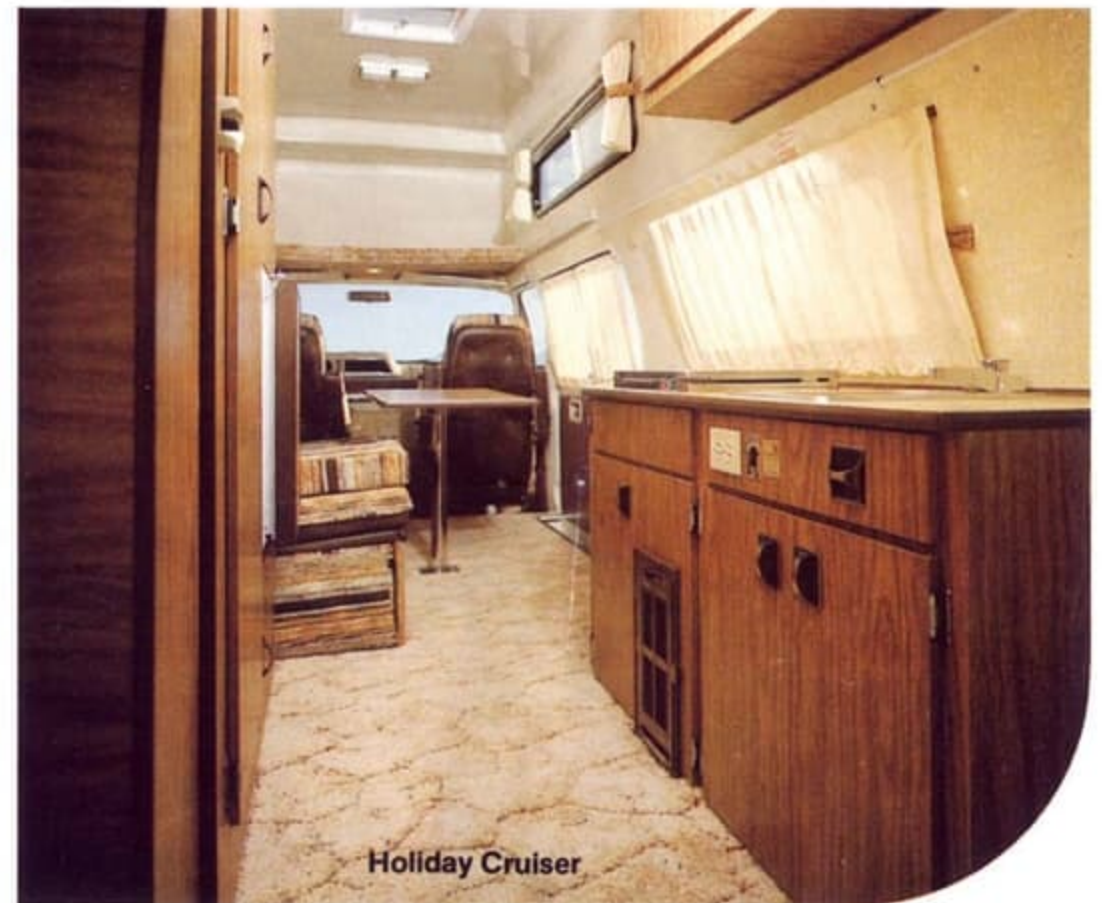
Stepping into a Home & Park Motorhome is like opening up a whole new world of family fun and leisure travel. Designed with fuel and space efficiency in mind, the Home & Park Series offers the answer to our energy and living space problem without sacrificing the luxury appointments expected of a top quality Motorhome. Home & Park takes the sensible approach to planning a series of vehicles with plenty of storage space, efficient galley and space saving dining/sleeping accommodation.

Colour coordinated interiors with rich woodgrain panelling and trim, plush carpet and lots of headroom make the Home & Park Series one of the most exciting and desirable motorhomes on the road today.

Step into your Home & Park Motorhome dealers showroom and you'll be taking your first step into a whole new world of exciting motorhome living.



Holiday Cruiser Interior



Holiday Cruiser

Executive Cruiser Interior



Step into a new world of mobile living . . .

Stepping into a Home & Park Motorhome is like opening up a whole new world of family fun and leisure travel. Designed with fuel and space efficiency in mind, the Home & Park Series offers the answer to our energy and living space problem without sacrificing the luxury appointments expected of a top quality Motorhome. Home & Park takes the sensible approach to planning a series of vehicles with plenty of storage space, efficient galley and space saving dining/sleeping accommodation.

Colour coordinated interiors with rich woodgrain panelling and trim, plush carpet and lots of headroom make the Home & Park Series one of the most exciting and desirable motorhomes on the road today.

Step into your Home & Park Motorhome dealers showroom and you'll be taking your first step into a whole new world of exciting motorhome living.

Holiday Cruiser Interior



Holiday Cruiser



Home & Park Travel Cruiser

An ideal vehicle for towing the family trailer with plenty of room for passengers and luggage. The multi-purpose Travel Cruiser can also be used as the family automobile and looks as much at home in the campground as it does in the home driveway or supermarket parking lot. A great family vehicle!

Home & Park Executive Cruiser

An exciting new vehicle that offers a wide range of uses including street vanning, executive travel use, mobile sales office, sports activity and family use. The Cruiser roof provides more headroom than a regular production vehicle while retaining smooth, attractive, eye catching lines.



Home & Park Travel Cruiser

An ideal vehicle for towing the family trailer with plenty of room for passengers and luggage. The multi-purpose Travel Cruiser can also be used as the family automobile and looks as much at home in the campground as it does in the home driveway or supermarket parking lot. A great family vehicle!

Home & Park Executive Cruiser

An exciting new vehicle that offers a wide range of uses including street vanning, executive travel use, mobile sales office, sports activity and family use. The Cruiser roof provides more headroom than a regular production vehicle while retaining smooth, attractive, eye catching lines.

Standard & Optional Equipment

	Holiday Cruiser	Executive Cruiser	Travel Cruiser
OPTIONS			
Factory Air Conditioning	●	●	●
Radial Whitewall Tires	●	●	●
Tinted glass	●	●	●
Bumper protection	●	●	●
Cruise control	●	●	●
Swivel Front Seats	●	●	●
Magazine Rack	●	●	●
Sunport	●	●	●
AM/FM stereo radio and cassette player	●	●	●
Roof vent (powered)	●	●	●
STANDARD CHASSIS SPECIFICATIONS			
Power Brakes and Steering	●	●	●
8 cyl Engine	●	●	●
Automatic Transmission	●	●	●
Rear and Cargo Doors	●	●	●
Heavy Duty Shocks	●	●	●
L78 X 15 Black sidewall tires	●	●	●
Spare tire and Wheel Cover	●	●	●
Heavy duty tow package	●	●	●

HOLIDAY CRUISER SPECIFICATIONS

Double skin fiberglass roof, fully insulated, tinted glass windows in bay and galley with slider screens, roof rack and vent-a-dome, upper headboard shelf, bay and galley tinted glass windows with slider screens, curtain and front privacy drape, carpeted floor, insulated walls are panelled in pecan woodgrain, galley upper and lower storage cupboards and counter top, large closet and clothes cabinet, water system with stainless steel sink, 8 gallon fresh water tank and 5 gallon waste container, 3 way faucet (city regulated, demand and galley pump), electrical system is 12 V, 90 Amp battery with isolator and three 12V dome lights, 110V, 15 Amp 25 ft. power cord with breaker, 110V galley receptacle, refrigerator with 2 1/2 cu. ft. capacity (110V / 12V-two way), two burner range with cover, 12,000 BTU furnace with blower, 30 lb. propane tank with gauge, exterior stripes, rear spare tire mount and cover, sofa or flip dinette with table.

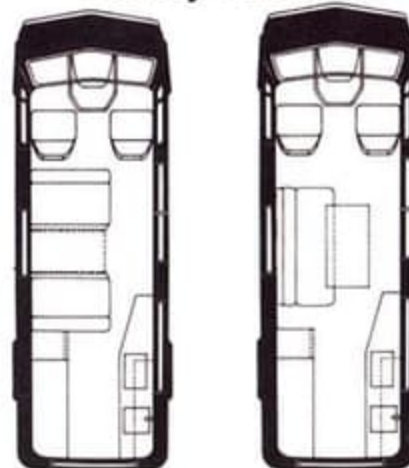
TRAVEL CRUISER SPECIFICATIONS

Fully carpeted floor, wall panelling is pecan woodgrain, floor plan features two table positions, colour coordinated bucket seats with sofa in rear, chrome roof rack, exterior striping, rear tire mount with cover.

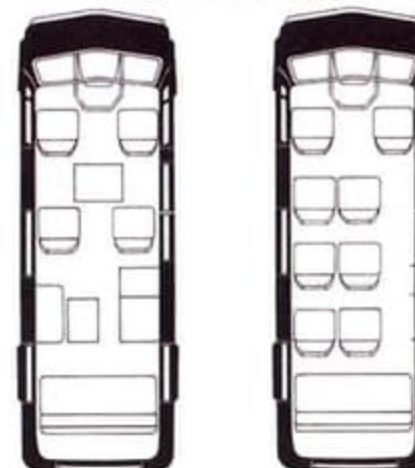
EXECUTIVE CRUISER SPECIFICATIONS

Fiberglass cruiser roof with front vista windows, plush carpet interior liner, custom roof rack, three large tinted bay windows with slider screens, plush shag carpet on floor and wall trim, pecan woodgrain panelling, bar and clothes closet cabinet storage unit, built-in 2 1/2 cu. ft. two way refrigerator, custom window shades and front privacy curtain, swivel barrel chair and rear 68" sofa unit, utility table and three 12V aircraft lamps, auxilliary 90 Amp battery with isolator, 110V, 15 Amp, 25' power cord with breaker and receptacle outlet, rear stereo speaker set and exterior stripe.

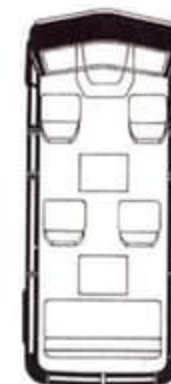
Holiday Cruiser



Executive Cruiser



Travel Cruiser



Note: Manufactured in accordance with C.S.A., M.V.S.S. and M.O.T. Standards. Due to continued product improvement, Home & Park Motorhomes reserves the right to change designs, specifications or prices without notice or occurring obligation.

Home & Park

Motorhomes

75 Ardel Place, Kitchener, Ontario N2C 2C8

Standard & Optional Equipment

OPTIONS

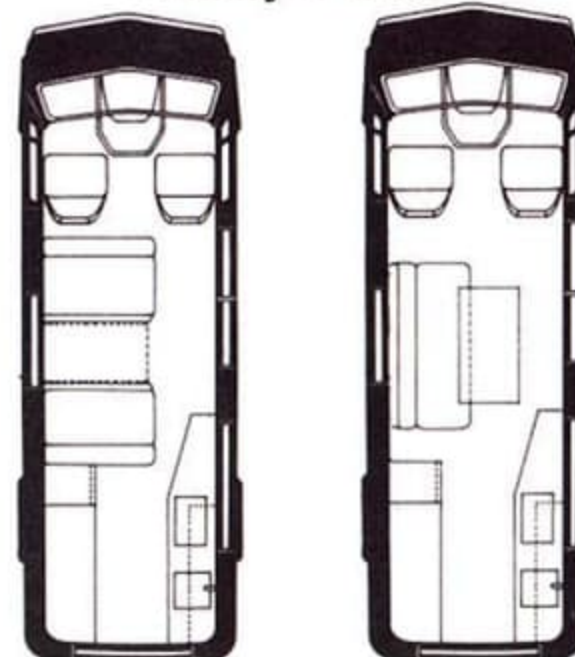
	Holiday Cruiser	Executive Cruiser	Travel Cruiser
Factory Air Conditioning	●	●	●
Radial Whitewall Tires	●	●	●
Tinted glass	●	●	●
Bumper protection	●	●	●
Cruise control	●	●	●
Swivel Front Seats	●	●	●
Magazine Rack			●
Sunport			●
AM/FM stereo radio and cassette player			●
Roof vent (powered)	●	●	●
STANDARD CHASSIS SPECIFICATIONS			
Power Brakes and Steering	●	●	●
8 cyl Engine	●	●	●
Automatic Transmission	●	●	●
Rear and Cargo Doors	●	●	●
Heavy Duty Shocks	●	●	●
L78 X 15 Black sidewall tires	●	●	●
Spare tire and Wheel Cover	●	●	●
Heavy duty tow package			●

Note: Manufactured in accordance with C.S.A., M.V.S.S. and M.O.T. Standards. Due to continued product improvement, Home & Park Motorhomes reserves the right to change designs, specifications or prices without notice or occurring obligation.

HOLIDAY CRUISER SPECIFICATIONS

Double skin fibreglass roof, fully insulated, tinted glass windows in bay and galley with slider screens, roof rack and vent-a-dome, upper headboard shelf, bay and galley tinted glass windows with slider screens, curtain and front privacy drape, carpeted floor, insulated walls are panelled in pecan woodgrain, galley upper and lower storage cupboards and counter top, large closet and clothes cabinet, water system with stainless steel sink, 8 gallon fresh water tank and 5 gallon waste container, 3 way faucet (city regulated, demand and galley pump), electrical system is 12 V, 90 Amp battery with isolator and three 12V dome lights, 110V, 15 Amp 25 ft. power cord with breaker, 110V galley receptacle, refrigerator with 2 1/2 cu. ft. capacity (110V / 12V-two way), two burner range with cover, 12,000 BTU furnace with blower, 30 lb. propane tank with gauge, exterior stripes, rear spare tire mount and cover, sofa or flip dinette with table.

Holiday Cruiser



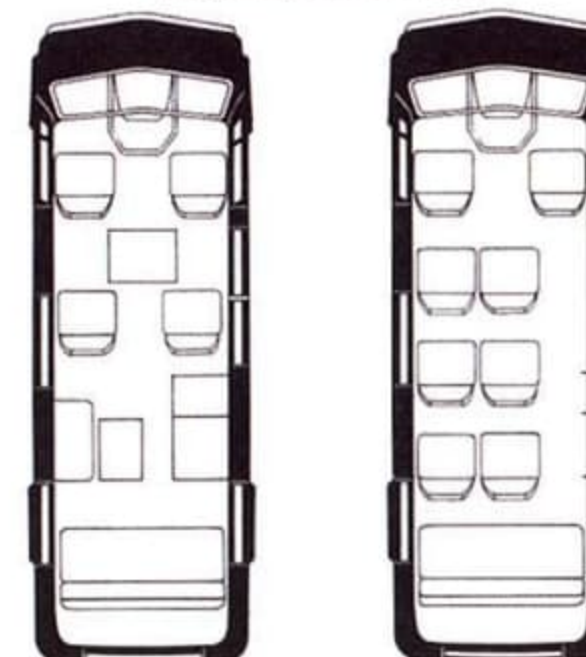
TRAVEL CRUISER SPECIFICATIONS

Fully carpeted floor, wall panelling is pecan woodgrain, floor plan features two table positions, colour coordinated bucket seats with sofa in rear, chrome roof rack, exterior striping, rear tire mount with cover.

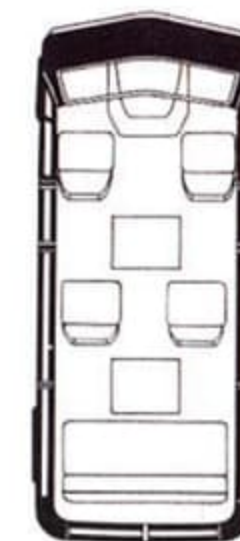
EXECUTIVE CRUISER SPECIFICATIONS

Fibreglass cruiser roof with front vista windows, plush carpet interior liner, custom roof rack, three large tinted bay windows with slider screens, plush shag carpet on floor and wall trim, pecan woodgrain panelling, bar and clothes closet cabinet storage unit, built-in 2 1/2 cu. ft. two way refrigerator, custom window shades and front privacy curtain, swivel barrel chair and rear 68" sofa unit, utility table and three 12V aircraft lamps, auxiliary 90 Amp battery with isolator, 110V, 15 Amp, 25' power cord with breaker and receptacle outlet, rear stereo speaker set and exterior stripe.

Executive Cruiser



Travel Cruiser



Home & Park

Motorhomes

75 Ardelt Place, Kitchener, Ontario N2C 2C8