

A new concept of an old idea . . .



Roadtrek II
By **Home & Park**TM
Motorhomes

75 ARDELT PLACE, KITCHENER, ONTARIO, CANADA N2C 2C8 (519) 745-1169

A new concept of an old idea . . .



Roadtrek II
By **Home & Park**TM
Motorhomes

75 ARDELT PLACE, KITCHENER, ONTARIO, CANADA N2C 2C8 (519) 745-1169

WHAT IS OUR NEW CONCEPT?

After years of conventional motorhome use, people realized that a smaller, more fuel efficient unit was needed. The recreational vehicle industry tried to satisfy this need with downsized motorhomes and camper vans.

Through the use of these new products, people discovered that in order to achieve fuel efficiency, the unit had to be cramped and uncomfortable. This is where our new concept comes in.

Never before has anyone taken the time and effort to design a small, fuel conserving recreational vehicle with comfort and practicality uppermost in their mind. We, at Home & Park Motorhomes, have achieved this with our Roadtrek II.

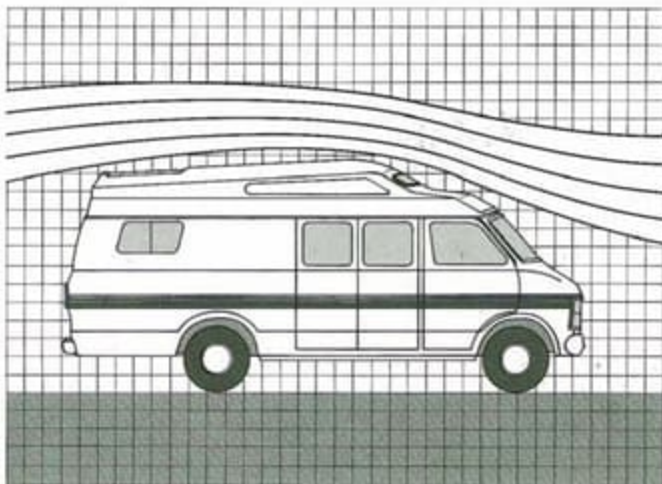
A BETTER LOOK AT OUR NEW CONCEPT.

Before we tell you about its conventional motorhome qualities, let's discuss a few things our unit has that larger motorhomes lack.

ROADTREK II IS FUEL EFFICIENT.

Any vehicle's fuel efficiency is directly dependent on its aerodynamics and weight.

Roadtrek II is much more streamlined than customary motorhomes or camper vans. It's astonishing aerodynamics can be attributed to a few basic factors. Our unit is not only lower, but raises the wind much more efficiently.



Aerodynamic design.

But, the aerodynamics don't end there. Once raised, the wind travels effortlessly along the rearward sloping roofline and down the tapered rear of the vehicle.

Roadtrek II is much lighter than the usual motorhome. This too, contributes to its fantastic fuel economy.

You can save even more money with a full or partial conversion to propane. We designed Roadtrek II to be streamlined and lighter to make it more economical to operate. It's as simple as that.

BUT IS IT PRACTICAL AND COMFORTABLE TO DRIVE?

It certainly is! Unlike larger motorhomes, Roadtrek II is as easy to drive as the family station wagon. Because the body has not been widened like other bulky looking van type units, it is effortlessly manoeuvred through congested downtown traffic or into a crowded parking lot.

Not only is Roadtrek II simple to drive and park, but its comforts rival even the most luxurious automobiles. You'll appreciate its generous window area and adjustable captain's chairs when you're midway through a lengthy journey.



"The Top Liner" with Rear gaucho (C3).

ROADTREK II IS PRACTICAL FOR EVERYDAY USE.

Because it's easy to drive, economical and comfortable, your Roadtrek II need not sit idle between vacations. And not merely for day long trips to your favorite resort, but likewise for daily commuting.

Photography by Marrianna Geil and Klaus Papzner.

WHAT IS OUR NEW CONCEPT?

After years of conventional motorhome use, people realized that a smaller, more fuel efficient unit was needed. The recreational vehicle industry tried to satisfy this need with downsized motorhomes and camper vans.

Through the use of these new products, people discovered that in order to achieve fuel efficiency, the unit had to be cramped and uncomfortable. This is where our new concept comes in.

Never before has anyone taken the time and effort to design a small, fuel conserving recreational vehicle with comfort and practicality uppermost in their mind. We, at Home & Park Motorhomes, have achieved this with our Roadtrek II.

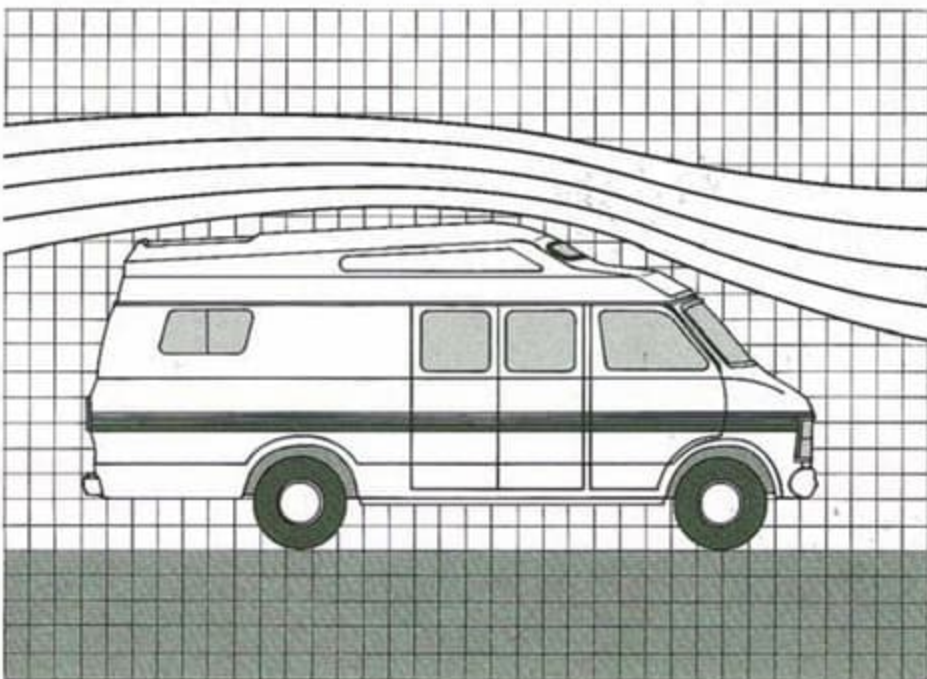
A BETTER LOOK AT OUR NEW CONCEPT.

Before we tell you about its conventional motorhome qualities, let's discuss a few things our unit has that larger motorhomes lack.

ROADTREK II IS FUEL EFFICIENT.

Any vehicle's fuel efficiency is directly dependent on its aerodynamics and weight.

Roadtrek II is much more streamlined than customary motorhomes or camper vans. Its astonishing aerodynamics can be attributed to a few basic factors. Our unit is not only lower, but raises the wind much more efficiently.



Aerodynamic design.

But, the aerodynamics don't end there. Once raised, the wind travels effortlessly along the rearward sloping roofline and down the tapered rear of the vehicle.

Roadtrek II is much lighter than the usual motorhome. This too, contributes to its fantastic fuel economy.

You can save even more money with a full or partial conversion to propane. We designed Roadtrek II to be streamlined and lighter to make it more economical to operate. It's as simple as that.

BUT IS IT PRACTICAL AND COMFORTABLE TO DRIVE?

It certainly is! Unlike larger motorhomes, Roadtrek II is as easy to drive as the family station wagon. Because the body has not been widened like other bulky looking van type units, it is effortlessly manoeuvred through congested downtown traffic or into a crowded parking lot.

Not only is Roadtrek II simple to drive and park, but its comforts rival even the most luxurious automobiles. You'll appreciate its generous window area and adjustable captain's chairs when you're midway through a lengthy journey.



"The Top Liner" with Rear gaucho (C3).

ROADTREK II IS PRACTICAL FOR EVERYDAY USE.

Because it's easy to drive, economical and comfortable, your Roadtrek II need not sit idle between vacations. And not merely for day long trips to your favorite resort, but likewise for daily commuting.

Photography by Marrianna Geil and Klaus Papzner.

ROADTREK II IS YOUR BEST CHOICE FOR COMFORTABLE AND PRACTICAL LIVING.

This is the quality that separates our design from all the other camper vans. Within the exterior dimensions of a van lies a true motorhome. Most of their qualities can be found in our "Motorhome Van."



Upper double and lower single beds (A3 and A2). Rear double bed (C1, C2 and C3).



Four captain's chairs (A1) and cloverleaf table (optional).

OUR EXCLUSIVE BATHROOM/PRIVACY AREA IS REMARKABLE.

Instead of forcing you into a small, cramped, permanent bathroom as in most of the larger motorhomes, Home & Park has created a spacious "temporary bathroom". When not needed, the bathroom (fixed toilet) is within the closet and out of the way, as in the left aerial view below.

To use the bathroom simply open the two folding closet doors and a spacious private area is created (lower right). The closet doors also serve to provide separate sleeping sections at night. It's so simple, it's incredible that no one has thought of it before.

Although small on the outside, once inside it's difficult to believe you're in a van at all. Home & Park takes advantage of the cab area as living space. By simply swiveling the driver's and passenger's chairs, a spacious seating area is formed with plenty of room for eating, entertaining or just relaxing.

And when it comes to daily living, Roadtrek II is out in front. Inside there is full standing height for persons up to six feet. But how do we do this with such a low roofline? It's simple. Instead of raising the roof more, we just lowered the floor. That way, a comfortable standing height and maximum fuel efficiency can be maintained.

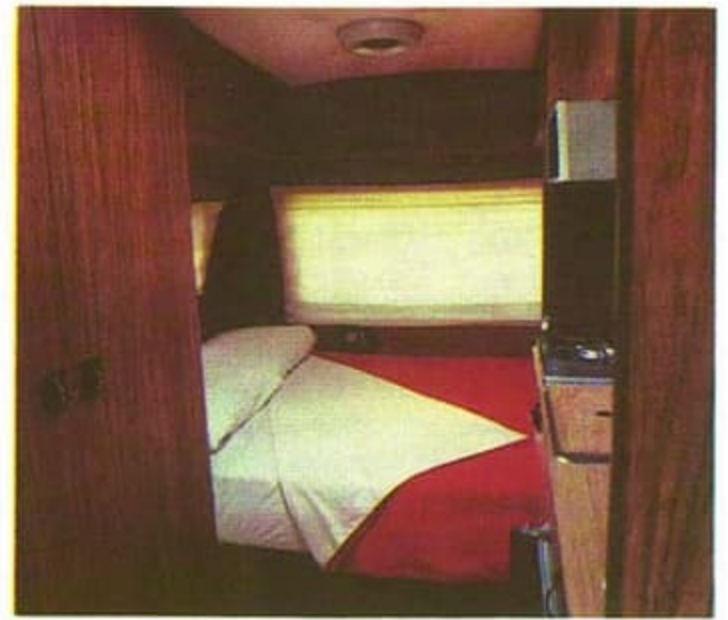
But the comfort and spaciousness doesn't end there. Roadtrek II can sleep 2, 4 or 6 in large comfortable beds of thick, soft and even foam without a bump, sag or gap to endure. Now compare that with anything else on the market! Access to the bathroom at night is made convenient by its central location; no climbing over three of your companions to reach the restroom. There is also ample storage space under the seats and bed and in the cupboards and wardrobe.



Aerial views of "The Versatile" (A2, B2 and C2).

ROADTREK II IS YOUR BEST CHOICE FOR COMFORTABLE AND PRACTICAL LIVING.

This is the quality that separates our design from all the other camper vans. Within the exterior dimensions of a van lies a true motorhome. Most of their qualities can be found in our "Motorhome Van."



Upper double and lower single beds (A3 and A2). Rear double bed (C1, C2 and C3).



Four captain's chairs (A1) and cloverleaf table (optional).

OUR EXCLUSIVE BATHROOM/PRIVACY AREA IS REMARKABLE.

Instead of forcing you into a small, cramped, permanent bathroom as in most of the larger motorhomes, Home & Park has created a spacious "temporary bathroom". When not needed, the bathroom (fixed toilet) is within the closet and out of the way, as in the left aerial view below.

To use the bathroom simply open the two folding closet doors and a spacious private area is created (lower right). The closet doors also serve to provide separate sleeping sections at night. It's so simple, it's incredible that no one has thought of it before.

Although small on the outside, once inside it's difficult to believe you're in a van at all. Home & Park takes advantage of the cab area as living space. By simply swiveling the driver's and passenger's chairs, a spacious seating area is formed with plenty of room for eating, entertaining or just relaxing.

And when it comes to daily living, Roadtrek II is out in front. Inside there is full standing height for persons up to six feet. But how do we do this with such a low roofline? It's simple. Instead of raising the roof more, we just lowered the floor. That way, a comfortable standing height and maximum fuel efficiency can be maintained.

But the comfort and spaciousness doesn't end there. Roadtrek II can sleep 2, 4 or 6 in large comfortable beds of thick, soft and even foam without a bump, sag or gap to endure. Now compare that with anything else on the market! Access to the bathroom at night is made convenient by its central location; no climbing over three of your companions to reach the restroom. There is also ample storage space under the seats and bed and in the cupboards and wardrobe.



Aerial views of "The Versatile" (A2, B2 and C2).

Our shower is equally amazing. It doubles as a wardrobe. Just swing the rack while the clothes remain on the hangers out over the bed, fold down the tub and draw the curtain. It really must be seen to be believed!



Combination shower and wardrobe (B3).

A fully equipped galley including fridge, stove, exhaust fan and sink is provided in your Roadtrek II. And it's completely self-contained for independent use. Now that's practical!



Rear dinette (C2) and standard galley.



Rear gaucho (C3).

WHAT'S A NEW IDEA WITHOUT OLD FASHIONED QUALITY?

Nothing. We know that you demand quality. And quality is what you get in a Home & Park Motorhome. As members, all our units meet and often exceed rigid R.V.I.A. recreational vehicle standards.

Not only is there quality in their design, but also in their construction. Each unit is backed by intensive quality control to ensure craftsmanship and dependability.

LOOK AT THEIRS, THEN LOOK AT OURS . . . WE ARE SURE YOU WON'T GO BACK TO LOOK AT THEIRS.

We invite you to compare our "Motorhome Vans" with any other on the road. In fact, compare it with any recreational vehicle anywhere. Only through comparison will the true qualities of our fine products shine through.

Our shower is equally amazing. It doubles as a wardrobe. Just swing the rack while the clothes remain on the hangers out over the bed, fold down the tub and draw the curtain. It really must be seen to be believed!



Combination shower and wardrobe (B3).

A fully equipped galley including fridge, stove, exhaust fan and sink is provided in your Roadtrek II. And it's completely self-contained for independent use. Now that's practical!



Rear dinette (C2) and standard galley.



Rear gaucho (C3).

WHAT'S A NEW IDEA WITHOUT OLD FASHIONED QUALITY?

Nothing. We know that you demand quality. And quality is what you get in a Home & Park Motorhome. As members, all our units meet and often exceed rigid R.V.I.A. recreational vehicle standards.

Not only is there quality in their design, but also in their construction. Each unit is backed by intensive quality control to ensure craftsmanship and dependability.

LOOK AT THEIRS, THEN LOOK AT OURS . . . WE ARE SURE YOU WON'T GO BACK TO LOOK AT THEIRS.

We invite you to compare our "Motorhome Vans" with any other on the road. In fact, compare it with any recreational vehicle anywhere. Only through comparison will the true qualities of our fine products shine through.

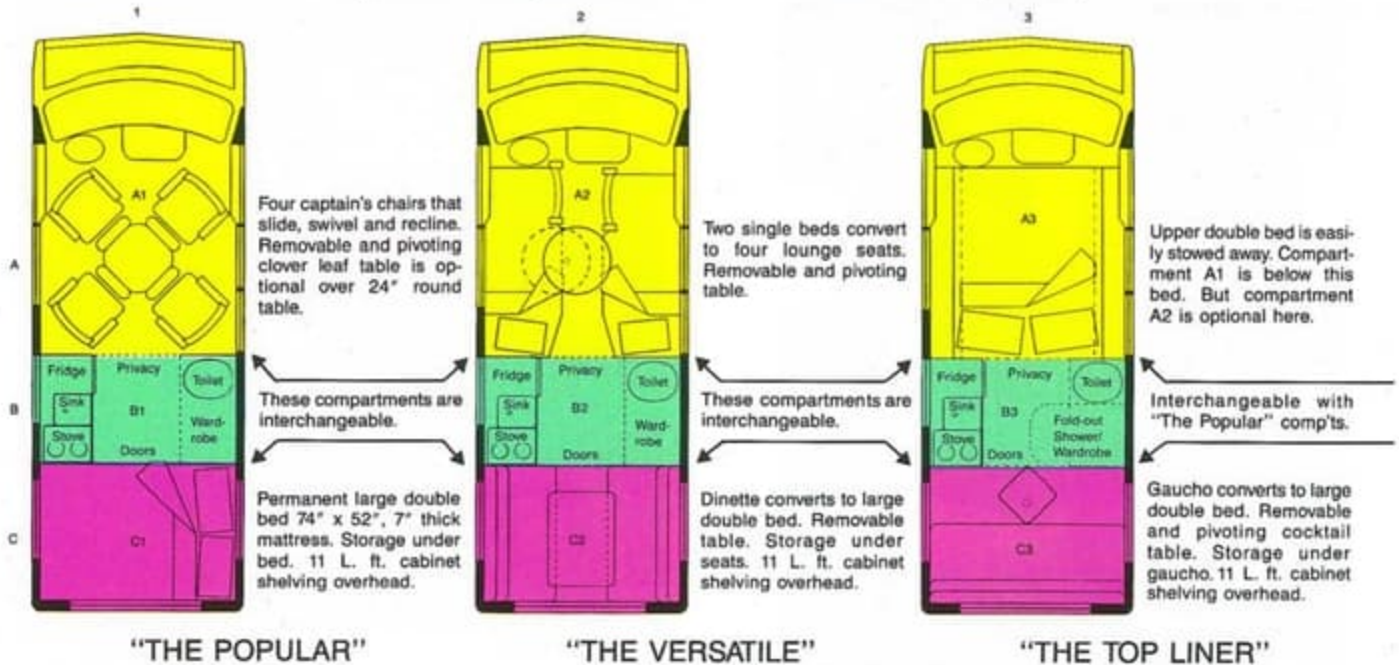
Your First Choice

With Confidence

A ROADTREK II MOTORHOME VAN

CHOOSE FROM THESE SPECIALLY SELECTED MODELS

Or alternatively make up your own custom model by selecting any combination of the "Easy Order Compartments" indicated ABC/123 respectively.



BRIEF DESCRIPTION OF MODELS

All models come equipped with a refrigerator/freezer, hooded exhaust fan over a two burner stove, furnace, electrical converter, pressurized water system with ample fresh water capacity and a sink and flush toilet connected to a large waste tank. Each unit has a spacious privacy area, ample storage, full standing height and sleeping for 2, 4 or 6 persons.

"THE POPULAR" sleeps two in a large stationary (not convertible) double bed (C1) that is easily removed for hauling large objects. In the front lounge (A1), there is seating for four in captain's chairs which slide, swivel and recline for maximum driving and living comfort. The removable cloverleaf dining table, which is optional over the standard round table, pivots out of the way for easy movement about the vehicle. This model is truly the perfect choice for a couple.

"THE VERSATILE" sleeps four. The rear dinette (C2) converts to a double bed as in "THE POPULAR". The four seats in the front lounge convert to two single beds (A2) with an aisle in between for free moving about when the round table is removed. To attain sleeping for six, simply add the upper bed (A3) as shown in "THE TOP LINER". There is spacious seating for eight in the front lounge and rear dinette. "THE VERSATILE" is your best selection if plenty of room and livability is desired.

"THE TOP LINER" sleeps four in two large double beds while retaining the comfort and luxury of four captain's chairs in the front lounge. The upper bed (A3) is quickly extended to provide sleeping for two and is easily stowed away after use. The rear gauchos (C3) converts to a double bed, as in "THE POPULAR", for another pair. Sleeping for six can be achieved by combining the upper bed (A3) and the two single beds (A2) found in "THE VERSATILE". There is comfortable seating for seven, for driving or living, in the four captain's chairs and rear gauchos. However, the most incredible feature of this model is its amazing 42" fold-out shower (B3) that doubles as a wardrobe; no valuable space is lost at all. "THE TOP LINER" is the choice for those who want everything in a fine motorhome.

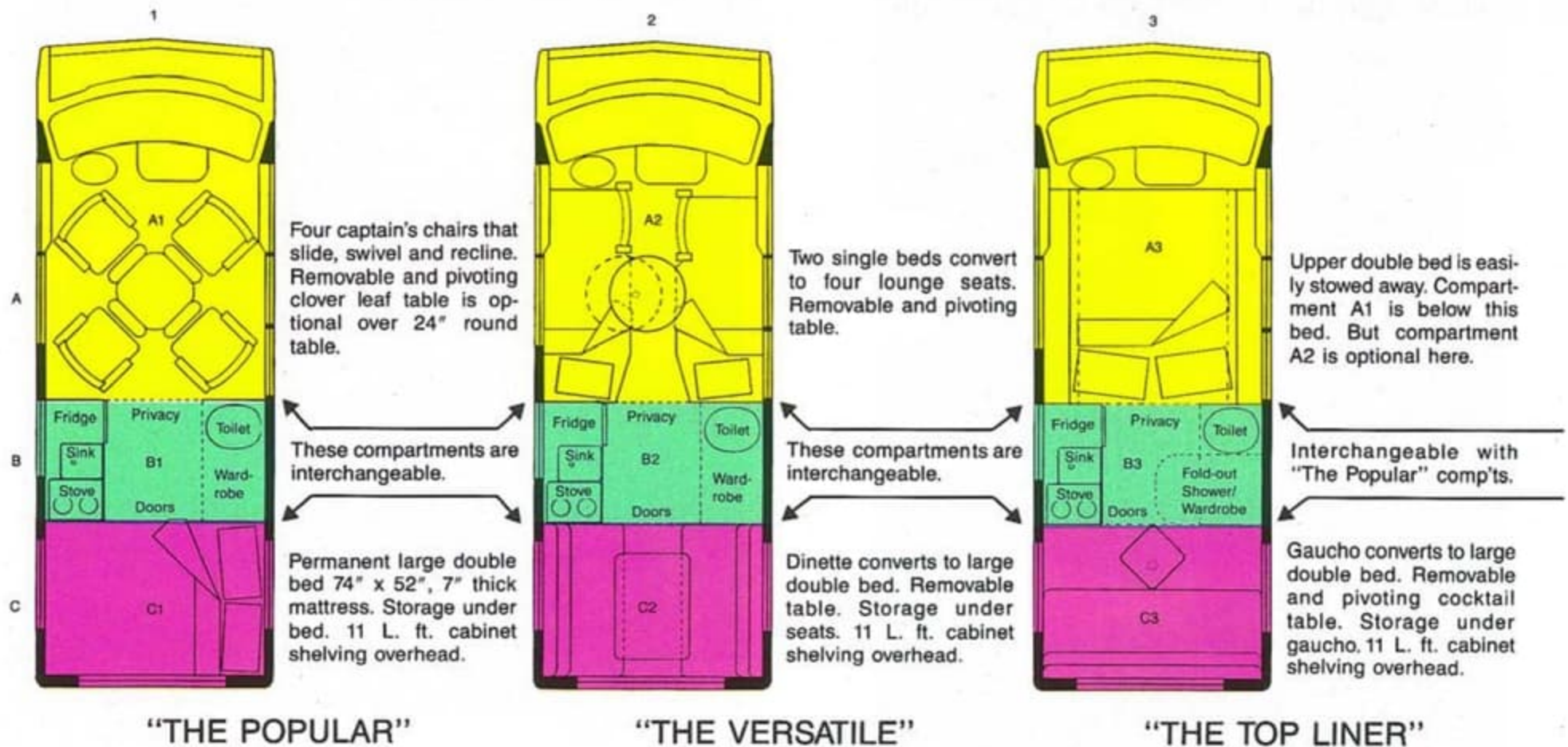
Your First Choice

With Confidence

A ROADTREK II MOTORHOME VAN

CHOOSE FROM THESE SPECIALLY SELECTED MODELS

Or alternatively make up your own custom model by selecting any combination of the "Easy Order Compartments" indicated ABC/123 respectively.



BRIEF DESCRIPTION OF MODELS

All models come equipped with a refrigerator/freezer, hooded exhaust fan over a two burner stove, furnace, electrical converter, pressurized water system with ample fresh water capacity and a sink and flush toilet connected to a large waste tank. Each unit has a spacious privacy area, ample storage, full standing height and sleeping for 2, 4 or 6 persons.

"THE POPULAR" sleeps two in a large stationary (not convertable) double bed (C1) that is easily removed for hauling large objects. In the front lounge (A1), there is seating for four in captain's chairs which slide, swivel and recline for maximum driving and living comfort. The removable cloverleaf dining table, which is optional over the standard round table, pivots out of the way for easy movement about the vehicle. This model is truly the perfect choice for a couple.

"THE VERSATILE" sleeps four. The rear dinette (C2) converts to a double bed as in "THE POPULAR". The four seats in the front lounge convert to two single beds (A2) with an aisle in between for free moving about when the round table is removed. To attain sleeping for six, simply add the upper bed (A3) as shown in "THE TOP LINER". There is spacious seating for eight in the front lounge and rear dinette. "THE VERSATILE" is your best selection if plenty of room and livability is desired.

"THE TOP LINER" sleeps four in two large double beds while retaining the comfort and luxury of four captain's chairs in the front lounge. The upper bed (A3) is quickly extended to provide sleeping for two and is easily stowed away after use. The rear gauchito (C3) converts to a double bed, as in "THE POPULAR", for another pair. Sleeping for six can be achieved by combining the upper bed (A3) and the two single beds (A2) found in "THE VERSATILE". There is comfortable seating for seven, for driving or living, in the four captain's chairs and rear gauchito. However, the most incredible feature of this model is its amazing 42" fold-out shower (B3) that doubles as a wardrobe; no valuable space is lost at all. "THE TOP LINER" is the choice for those who want everything in a fine motorhome.

INFORMATION

STANDARD CONVERSION FEATURES

- 1 Low fibreglass roof
- 2 Roof vent, 3 skylites
- 3 Peekproof curtains
- 4 Vinyl covered walls and ceiling (insulated)
- 5 Recessed entrance step
- 6 Four captain's chairs
- 7 24" pivoting and removable round table
- 8 Large stationary double bed
- 9 Sleeping for two persons
- 10 Storage under seats and bed and in overhead cupboards
- 11 Counter cabinet shelving
- 12 Spacious wardrobe
- 13 Sound equipment housing
- 14 Sliding shutters in front of galley window
- 15 12V hooded exhaust fan over two burner LP stove
- 16 Automatic forced air LP gas furnace (10,150 BTU)
- 17 50L/13 US gal. LP gas tank
- 18 110/12V fridge (2.5 cu. ft.)
- 19 110/12V 15 amp. converter
- 20 Auxiliary battery under hood
- 21 Six 12V lights (2 fluorescent)
- 22 110V and city water connections
- 23 12V water pressure system
- 24 40L/11 US gal. fresh water tank
- 25 Privacy area (40" x 60")
- 26 Fixed toilet, 115L/31 US gal. waste water tank

STANDARD AUTOMOTIVE FEATURES

- 31 Automatic transmission
- 32 Power steering and brakes
- 33 Cruise control
- 34 Anti-sway stabilizer bar
- 35 83L/22 US gal. gasoline tank
- 36 5.2L/318 CID 2 BBL V8 engine
- 37 P235/75R15 steel belted radials
- 38 Exterior accent striping

AUTOMOTIVE OPTIONS

- As per Chrysler Corporation plus
- 53 Factory air conditioning
 - 64 Spare tire, carrier and cover
 - 65 Dual fuel (propane/gasoline) conversion (N/A in US or with B3)

RECREATIONAL VEHICLE COMPLIANCES

CANADA: Only C.S.A. approved materials and equipment are used and may exceed required installation standards on many items.

USA: All units are R.V.I.A. approved and may exceed individual state safety codes.

Any front/centre/rear compartment combination (including upper bed) may be selected. For example: A1, A3, B2 and C3.

LOCATION	"THE POPULAR"	CODE	X
FRONT	Four swiveling and reclining captain's chairs with pivoting and removable round table	A1	
CENTRE	Galley with 110/12V fridge, sink and fan over stove and privacy area with wardrobe and toilet	B1	
REAR	Large stationary double bed	C1	
"THE VERSATILE"			
FRONT	Two captain's chairs and two lounge seats convert to two single beds with pivoting round table	A2	
CENTRE	Same as B1 plus choice of larger fresh water tank	B2	
REAR	Dinette converts to large double bed	C2	
"THE TOP LINER"			
FRONT	Upper double bed (must choose A1 or A2 also)	A3	
CENTRE	Same as B1 plus shower, 22L/6 US gal. hot water heater and choice of fresh water capacity	B3	
REAR	Gaicho converts to double bed, also 3 seat belts, pivoting cocktail table and 2 large bay windows	C3	
CONVERSION OPTIONS			
	41 Cabinet over windshield (replaces 13, N/A with A3)		
	42 Cloverleaf table (34" x 34" opened/23" x 23" closed)		
	43 LP gas/12V fridge (1.7 cu. ft., replaces 18)		
	44 Additional auxiliary battery (under floor)		
	45 110V roof air conditioning (7,100 BTU)		
	46 260L/68 US gal. fresh water tank (with B3 only, N/A with C3)		
WARRANTY			
All units are covered by a three part limited warranty:			
PART A: Automotive Warranty — The current warranty offered by the Chrysler Corporation.			
PART B: Appliance Warranty — The warranties offered on the individual appliances by their respective manufacturers.			
PART C: Home & Park Conversion Warranty — A one year/20,000 km/12,000 mile limited warranty covering the manufacture of the conversion.			
Ask your dealer for details.			

EXTERIOR DIMENSIONS

Overall length	5660 mm (18'7")
Overall width	2030 mm (6'8")
Overall height	2390 mm (7'10")
Curb weight	2270 kg (5000 lbs.)
Gross vehicle weight	2900 kg (6400 lbs.)

INTERIOR DIMENSIONS

Standing height	(max.) 1830 mm (72")
Rear double bed:	
length	1880 mm (74")
width	1320 mm (52")
Upper double bed:	
length	1830 mm (72")
width	1220 mm (48")
Single bed:	
length (max.)	1780 mm (70")
width (max.)	660 mm (26")

Certain options may require deletions of standard items in order to function properly. Specifications and design are subject to change without notice or obligation whatsoever. Home & Park Motorhomes shall not be held responsible for the delivery or non-delivery of any item herein.

The drawings, photographs, literature and technical information contained herein is the exclusive property of Hanmar Home Equipment Limited. The above may not be reproduced, used nor conveyed to others.

Original and exclusive roof and interior design and contents may not be duplicated. Patents and copy rights applied for.

Authorized Dealer:

INFORMATION

STANDARD CONVERSION FEATURES

- 1 Low fibreglass roof
- 2 Roof vent, 3 skylites
- 3 Peekproof curtains
- 4 Vinyl covered walls and ceiling (insulated)
- 5 Recessed entrance step
- 6 Four captain's chairs
- 7 24" pivoting and removable round table
- 8 Large stationary double bed
- 9 Sleeping for two persons
- 10 Storage under seats and bed and in overhead cupboards
- 11 Counter cabinet shelving
- 12 Spacious wardrobe
- 13 Sound equipment housing
- 14 Sliding shutters in front of galley window
- 15 12V hooded exhaust fan over two burner LP stove
- 16 Automatic forced air LP gas furnace (10,150 BTU)
- 17 50L/13 US gal. LP gas tank
- 18 110/12V fridge (2.5 cu. ft.)
- 19 110/12V 15 amp. converter
- 20 Auxiliary battery under hood
- 21 Six 12V lights (2 fluorescent)
- 22 110V and city water connections
- 23 12V water pressure system
- 24 40L/11 US gal. fresh water tank
- 25 Privacy area (40" x 60")
- 26 Fixed toilet, 115L/31 US gal. waste water tank

STANDARD AUTOMOTIVE FEATURES

- 31 Automatic transmission
- 32 Power steering and brakes
- 33 Cruise control
- 34 Anti-sway stabilizer bar
- 35 83L/22 US gal. gasoline tank
- 36 5.2L/318 CID 2 BBL V8 engine
- 37 P235/75R15 steel belted radials
- 38 Exterior accent striping

AUTOMOTIVE OPTIONS

- As per Chrysler Corporation plus
- 53 Factory air conditioning
 - 64 Spare tire, carrier and cover
 - 65 Dual fuel (propane/gasoline) conversion (N/A in US or with B3)

RECREATIONAL VEHICLE COMPLIANCES

CANADA: Only C.S.A. approved materials and equipment are used and may exceed required installation standards on many items.

USA: All units are R.V.I.A. approved and may exceed individual state safety codes.

Any front/centre/rear compartment combination (including upper bed) may be selected. For example: A1, A3, B2 and C3.

LOCATION	"THE POPULAR"	CODE	X
FRONT	Four swiveling and reclining captain's chairs with pivoting and removable round table	A1	
CENTRE	Galley with 110/12V fridge, sink and fan over stove and privacy area with wardrobe and toilet	B1	
REAR	Large stationary double bed	C1	

"THE VERSATILE"

FRONT	Two captain's chairs and two lounge seats convert to two single beds with pivoting round table	A2	
CENTRE	Same as B1 plus choice of larger fresh water tank	56L/15 US gal. 82L/22 US gal.	B2
REAR	Dinette converts to large double bed	C2	

"THE TOP LINER"

FRONT	Upper double bed (must choose A1 or A2 also)	A3	
CENTRE	Same as B1 plus shower, 22L/6 US gal. hot water heater and choice of fresh water capacity	112L/30 US gal. 164L/44 US gal.	B3
REAR	Gaучо converts to double bed, also 3 seat belts, pivoting cocktail table and 2 large bay windows	C3	

CONVERSION OPTIONS

- 41 Cabinet over windshield (replaces 13, N/A with A3)
- 42 Cloverleaf table (34" x 34" opened/23" x 23" closed)
- 43 LP gas/12V fridge (1.7 cu. ft., replaces 18)
- 44 Additional auxiliary battery (under floor)
- 45 110V roof air conditioning (7,100 BTU)
- 46 260L/68 US gal. fresh water tank (with B3 only, N/A with C3)

WARRANTY

All units are covered by a three part limited warranty:

- PART A:** Automotive Warranty —
The current warranty offered by the Chrysler Corporation.
- PART B:** Appliance Warranty —
The warranties offered on the individual appliances by their respective manufacturers.
- PART C:** Home & Park Conversion Warranty —
A one year/20,000 km/12,000 mile limited warranty covering the manufacture of the conversion.

Ask your dealer for details.

EXTERIOR DIMENSIONS

Overall length	5660 mm (18' 7")
Overall width	2030 mm (6' 8")
Overall height	2390 mm (7' 10")
Curb weight	2270 kg (5000 lbs.)
Gross vehicle weight	2900 kg (6400 lbs.)

INTERIOR DIMENSIONS

Standing height (max.)	1830 mm (72")
Rear double bed:	
length	1880 mm (74")
width	1320 mm (52")
Upper double bed:	
length	1830 mm (72")
width	1220 mm (48")
Single bed:	
length (max.)	1780 mm (70")
width (max.)	660 mm (26")

Certain options may require deletions of standard items in order to function properly. Specifications and design are subject to change without notice or obligation whatsoever. Home & Park Motorhomes shall not be held responsible for the delivery or non-delivery of any item herein.

The drawings, photographs, literature and technical information contained herein is the exclusive property of Hanmar Home Equipment Limited. The above may not be reproduced, used nor conveyed to others.

Original and exclusive roof and interior design and contents may not be duplicated. Patents and copy rights applied for.

Authorized Dealer: