



# Palomino

CAMPING TRAILERS







# Palomino

## CAMPING TRAILERS





# Palomino



*Silverware drawer  
conveniently located  
under the  
dinette table.*



**Top Loading Ice Chest**  
*This spacious ice chest  
is standard  
in all Palomino  
camping trailers.*



**Refrigerator**  
*Dometic — 2-way system:  
L.P. gas, 12-volt.*





# Palomino



*Silverware drawer  
conveniently located  
under the  
dinette table.*



**Top Loading Ice Chest**  
*This spacious ice chest  
is standard  
in all Palomino  
camping trailers.*



**Refrigerator**  
*Dometic — 2-way system:  
L.P. gas, 12-volt.*





# TXL

The TXL models offer you our largest "Fold-A-Wall" trailer with three different floor plans. This model is Palomino's original "Fold-A-Wall" camper built with our fifteen years of experience in "Fold-A-Wall" construction. That same original quality continues with three great floor plans to choose from. Standard features include electric brakes, in and out stove, 13" tires, and many more deluxe features.

If you desire the ultimate in camping trailers the TXL-SC will meet your needs. This model is standard with shower, toilet, in and out stove and refrigerator.

All Palomino "Fold-A-Wall" camping trailers are available in a crank-up lift system or the E-Z spring-loaded lift system.



**Roof Mounted Air  
Conditioner Ready**

*Available only in crank-up  
lift system models.*

**Shower With  
Hot Water System**  
*Standard in TXL-SC  
available in  
TXL-LB model.*

**TXL-SC**  
*Crank  
(shown)*

## **In And Out Stove**

*Have the convenience of  
cooking outside or inside  
of your camper.  
Standard on all TXL models.*

## **Electric Toilet**

*Self-contained  
for your convenience  
and privacy.*





# TXL

The TXL models offer you our largest "Fold-A-Wall" trailer with three different floor plans. This model is Palomino's original "Fold-A-Wall" camper built with our fifteen years of experience in "Fold-A-Wall" construction. That same original quality continues with three great floor plans to choose from. Standard features include electric brakes, in and out stove, 13" tires, and many more deluxe features.

If you desire the ultimate in camping trailers the TXL-SC will meet your needs. This model is standard with shower, toilet, in and out stove and refrigerator.

All Palomino "Fold-A-Wall" camping trailers are available in a crank-up lift system or the E-Z spring-loaded lift system.



**Roof Mounted Air  
Conditioner Ready**

*Available only in crank-up  
lift system models.*

**Shower With  
Hot Water System**  
*Standard in TXL-SC  
available in  
TXL-LB model.*

**TXL-SC**  
*Crank  
(shown)*

## **In And Out Stove**

*Have the convenience of  
cooking outside or inside  
of your camper.  
Standard on all TXL models.*

## **Electric Toilet**

*Self-contained  
for your convenience  
and privacy.*





# SXL

Offers our tradition of the "Fold-A-Walls" concept in a smaller trailer. Raising quickly for an easy set up to enjoy deluxe features such as 4" mattresses, 110V outside receptacles and much more. The SXL offers the refrigerator option as well as a dome light, patio light and 12-volt converter as standard items. This trailer will sleep six in comfort.

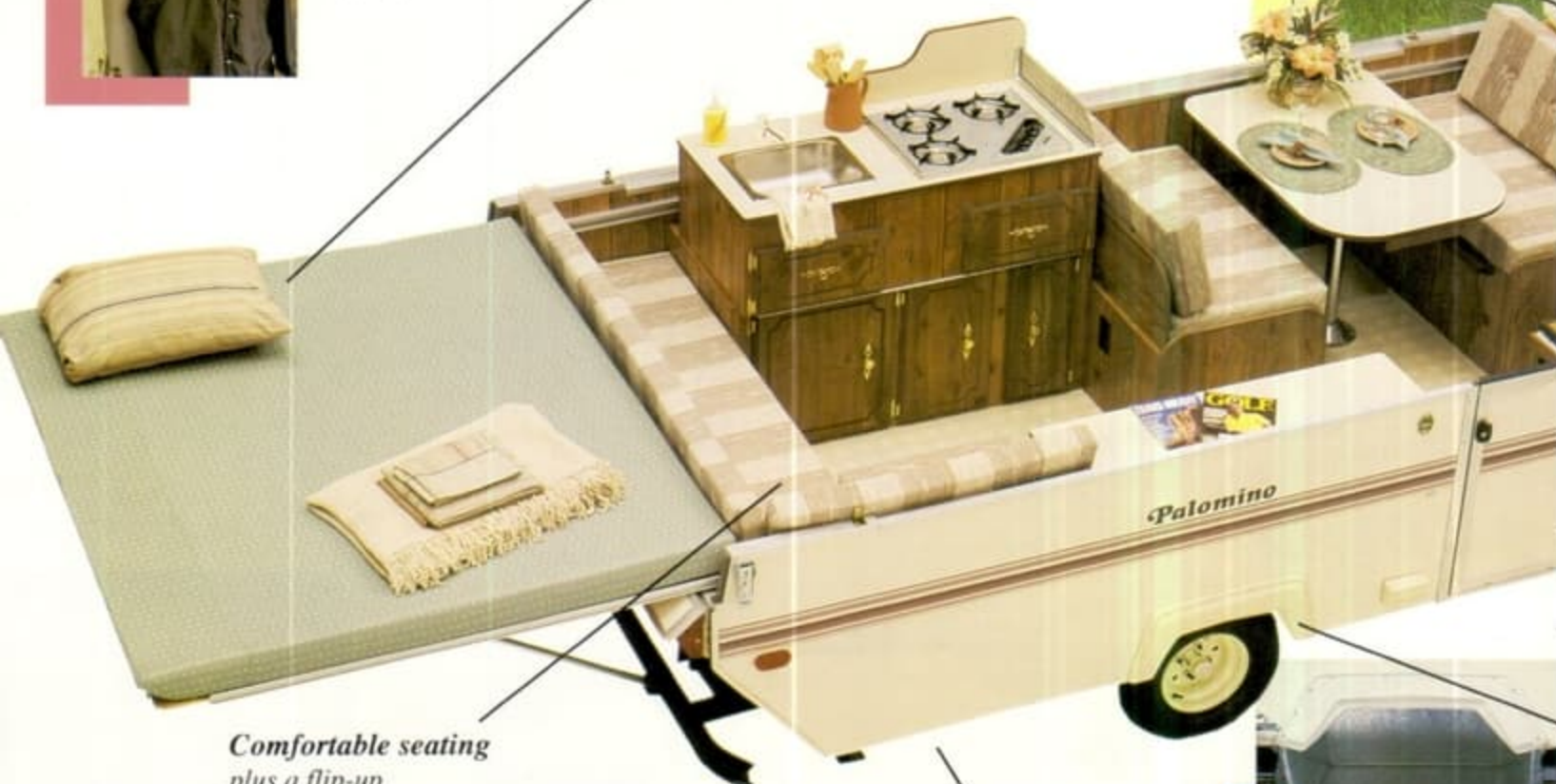


## ***Clothes Rack***

*Another standard feature on all Palomino camping trailers.*

## ***Queen Size Beds***

*A feature that's hard to beat! 61" bed areas standard on most Palominos.*



***Comfortable seating***  
*plus a flip-up toilet storage compartment. Standard on many Palomino camping trailers.*

***Self Storing Jacks***  
*Standard on all Palomino camping trailers.*





# SXL

Offers our tradition of the "Fold-A-Walls" concept in a smaller trailer. Raising quickly for an easy set up to enjoy deluxe features such as 4" mattresses, 110V outside receptacles and much more. The SXL offers the refrigerator option as well as a dome light, patio light and 12-volt converter as standard items. This trailer will sleep six in comfort.

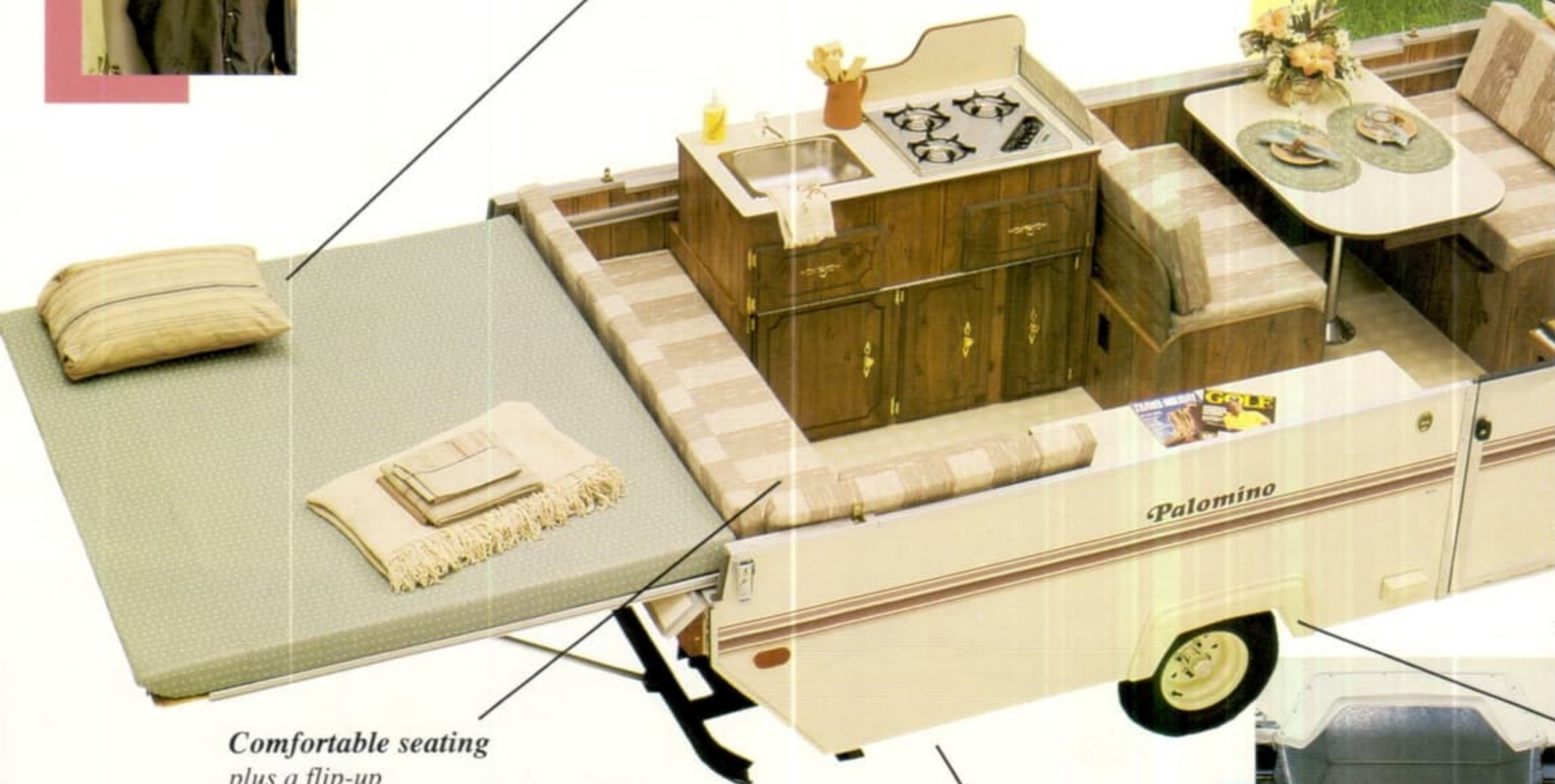


## ***Clothes Rack***

*Another standard feature on all Palomino camping trailers.*

## ***Queen Size Beds***

*A feature that's hard to beat! 61" bed areas standard on most Palominos.*



***Comfortable seating***  
*plus a flip-up toilet storage compartment. Standard on many Palomino camping trailers.*

***Self Storing Jacks***  
*Standard on all Palomino camping trailers.*





**Palomino**



*MXL - RG  
Crank  
(shown)*

# *MXL- RG and LB*

Offered in two unique floor plans with a large roomy interior and a beautiful design and style throughout the trailer. You may choose from a large King Size bed area, or the floor plan with the additional seating and sleeping area.

Both plans offer you the optional refrigerator and, in and out stove, plus many more features that make the MXL one of our finest camping trailers. Sleeps 6 or 7 comfortably.

***Four Standard Features:***


- Torsion axle*
- Galvanized Metal Wheelwells*
- "Open Wheelwell"*
- Structure Wood — one-piece floor with limited life time warranty.*





**Palomino**

# ***MXL- RG and LB***



***MXL - RG**  
Crank  
(shown)*

**Four Standard Features:**  
Torsion axle  
Galvanized Metal Wheelwells  
"Open Wheelwell"  
Structure Wood — one-piece floor  
with limited  
life time warranty.

Offered in two unique floor plans with a large roomy interior and a beautiful design and style throughout the trailer. You may choose from a large King Size bed area, or the floor plan with the additional seating and sleeping area.

Both plans offer you the optional refrigerator and, in and out stove, plus many more features that make the MXL one of our finest camping trailers. Sleeps 6 or 7 comfortably.



# Pinto

A very popular model with a floor plan to meet your family needs and budget. The Pinto is easy to set up and sleeps six in comfort. Other features include a flip up toilet storage, 4" mattresses and 110V outside receptacle.



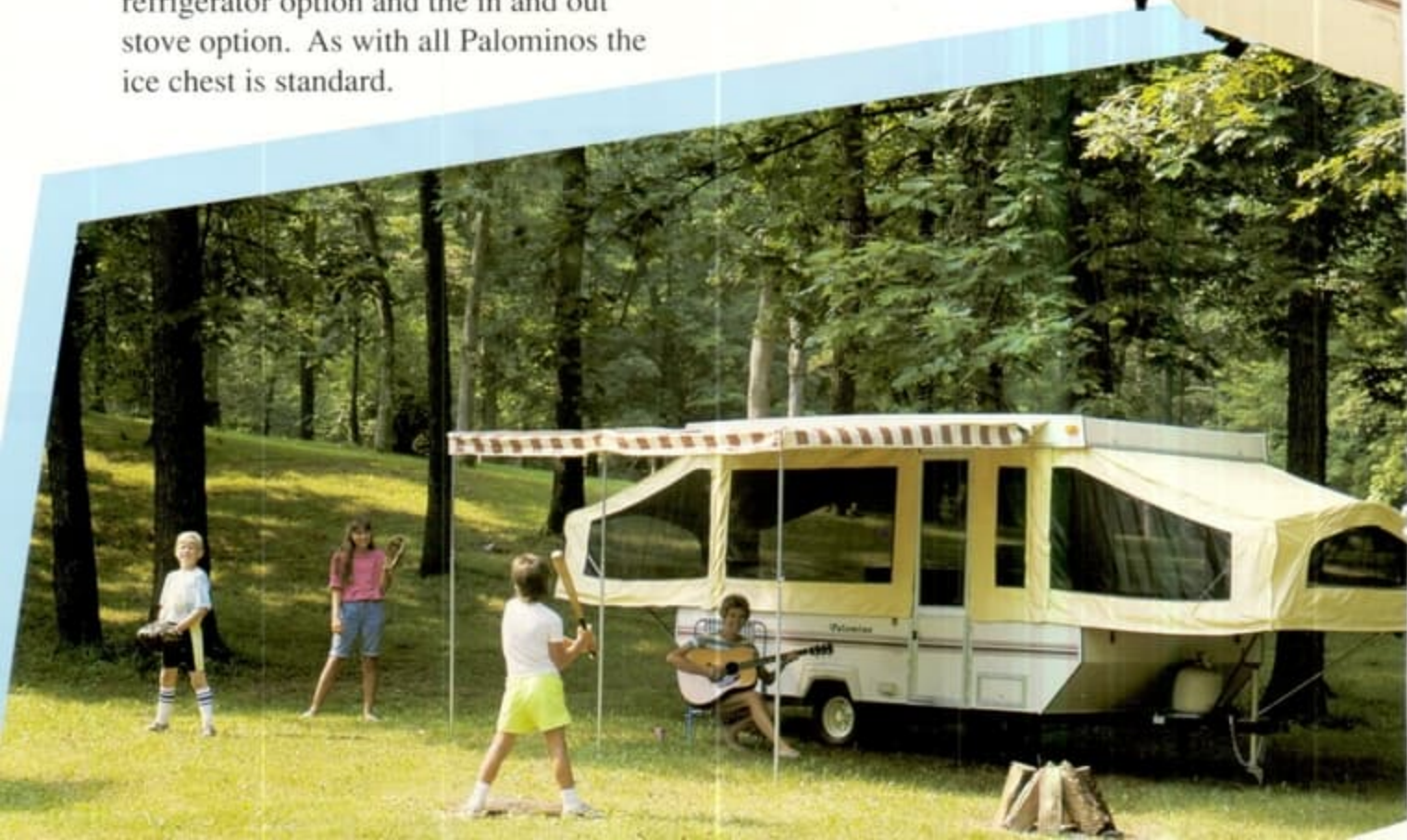
# Stallion

For the family who desires a great mid-size camper with a very roomy interior. This model is well equipped with two 61" Queen bed areas, flip up toilet storage, 4" mattress cushions and storage galore. The Stallion also offers the refrigerator option and the in and out stove option. As with all Palominos the ice chest is standard.



## **Pantry**

*Need that extra canned goods storage? Palomino offers this feature on many models for your convenience.*





# Pinto

A very popular model with a floor plan to meet your family needs and budget. The Pinto is easy to set up and sleeps six in comfort. Other features include a flip up toilet storage, 4" mattresses and 110V outside receptacle.

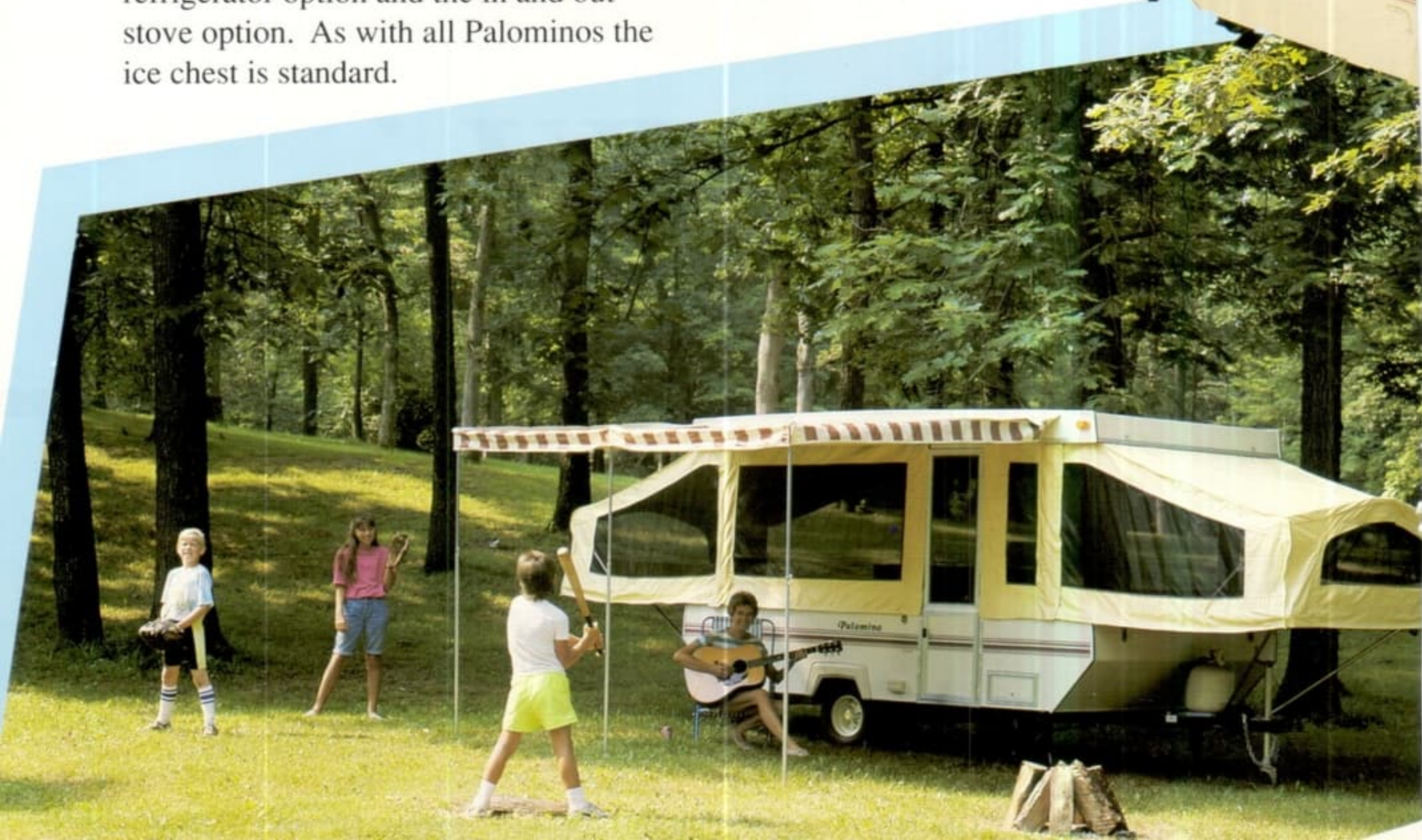


# Stallion

For the family who desires a great mid-size camper with a very roomy interior. This model is well equipped with two 61" Queen bed areas, flip up toilet storage, 4" mattress cushions and storage galore. The Stallion also offers the refrigerator option and the in and out stove option. As with all Palominos the ice chest is standard.



**Pantry**—  
*Need that extra canned goods storage? Palomino offers this feature on many models for your convenience.*





### **Roof Rack**

Available for all models, includes mounting brackets. Great for canoes and other small boats.

# *Yearling*

Our "Super Lightweights" continue with an easy operating set up and a very attractive interior. The Yearling offers a large dinette, and for your sleeping comfort 4" mattresses. Towing is a breeze and the Yearling offers many convenient features for enjoyable family camping.



**Pedestal Leg Table**  
Designed for your seating comfort!

**Palomino**

**Mustang**  
Long bed model  
(shown)

**Outside Receptacle**  
How many more features  
can Palomino offer?

### **Canopy**

This Mustang model is shown with our deluxe canopy in a bag and the optional free-standing kit.

# *Mustang RG and LB*

Mustang is the largest Palomino soft side offered in two very attractive floor plans. The Mustang rear gauchio offers additional seating and sleeping, or you may desire the Mustang long bed model. Both floor plans are offered in a beautifully styled trailer with many more features as standard items.



### **Roof Rack**

Available for all models, includes mounting brackets. Great for canoes and other small boats.

# *Yearling*

Our "Super Lightweights" continue with an easy operating set up and a very attractive interior. The Yearling offers a large dinette, and for your sleeping comfort 4" mattresses. Towing is a breeze and the Yearling offers many convenient features for enjoyable family camping.

**Pedestal Leg Table**  
Designed for your seating comfort!

**Palomino**

**Mustang**  
Long bed model  
(shown)

**Outside Receptacle**  
How many more features can Palomino offer?

### **Canopy**

This Mustang model is shown with our deluxe canopy in a bag and the optional free-standing kit.

# *Mustang RG and LB*

Mustang is the largest Palomino soft side offered in two very attractive floor plans. The Mustang rear gaucho offers additional seating and sleeping, or you may desire the Mustang long bed model. Both floor plans are offered in a beautifully styled trailer with many more features as standard items.



# Palomino



### **Bunk Rod Storage**

*With your new Palomino trailer your bunk support rods are always at your fingertips whether you are setting up or taking down. Standard on all models.*

### **Side Dinette**

*This floor plan offers a full dinette with easy access to bed areas.*



**Colt**  
(shown)

### **Mirrored Swing-Up Door**

*Another convenient feature from Palomino. Simply swing the door to the ceiling for storage during travel. Standard on all models.*

# Pony

The Palomino Pony offers you quality camping at an affordable price. With a 3-burner stove, stainless steel sink, ice chest and a very large dinette. Easy to tow, lightweight and sleeps six.





# Palomino



## **Bunk Rod Storage**

*With your new Palomino trailer your bunk support rods are always at your fingertips whether you are setting up or taking down. Standard on all models.*

## **Side Dinette**

*This floor plan offers a full dinette with easy access to bed areas.*



**Colt**  
(shown)

## **Mirrored Swing-Up Door**

*Another convenient feature from Palomino. Simply swing the door to the ceiling for storage during travel. Standard on all models.*

# Pony

The Palomino Pony offers you quality camping at an affordable price. With a 3-burner stove, stainless steel sink, ice chest and a very large dinette. Easy to tow, lightweight and sleeps six.





# Palomino



## Broncos



### The Truck Camper Designed With Trucks In Mind

Here's one of the lightest in the industry — a truck camper perfectly suited to most standard half-ton trucks. And Palomino truck campers achieve their strength through thermo-core 3-ply laminated construction and a radius roof. Special Palomino features include: an inside gas bottle, Jalousie windows, wiring harness, and a moisture and mildew-resistant, 2-ply vinyl reinforced canvas on the extension.

Attractively designed to sleep 4. Stainless steel sink and 3-burner stove add to built-in conveniences. Cabinet

space includes room for either 75 lb. ice box or refrigerator. Permanent latch drawers and doors add an extra touch to Palomino's quality. Crank-up raiser system raises the roof in seconds.

And it's automotively designed by the makers of Palomino tent campers.

Palomino Mini-Broncos are super light weight designed and styled to fit the new breed of mini-trucks and import models.

#### Mini L



- Crank-up raiser system
- Thermo-core laminated construction

#### Model 186



- Super Light Weight Construction.
- Model 186 — 935 lbs.

#### Specifications

	Mini L	186
Weight	740	935
Box Length	88"	96"
Interior Open Height	75-1/2"	75-1/2"
Overall Length	129"	142"
Width	76"	86"
Overall Closed Height	55-1/4"	64"

Camper jacks, 12-Volt Gas Refrigerator, 3-Way Refrigerator and Furnace optional on all models. Cabinet air conditioner available in Mini-L and 186 models.



# Palomino



# Broncos



## The Truck Camper Designed With Trucks In Mind

Here's one of the lightest in the industry — a truck camper perfectly suited to most standard half-ton trucks. And Palomino truck campers achieve their strength through thermo-core 3-ply laminated construction and a radius roof. Special Palomino features include: an inside gas bottle, Jalousie windows, wiring harness, and a moisture and mildew-resistant, 2-ply vinyl reinforced canvas on the extension.

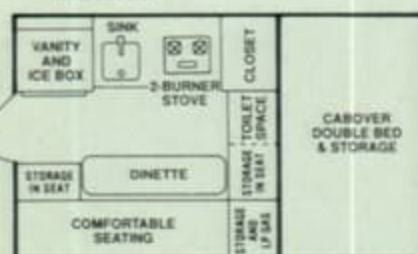
Attractively designed to sleep 4. Stainless steel sink and 3-burner stove add to built-in conveniences. Cabinet

space includes room for either 75 lb. ice box or refrigerator. Permanent latch drawers and doors add an extra touch to Palomino's quality. Crank-up raisor system raises the roof in seconds.

And it's automotively designed by the makers of Palomino tent campers.

Palomino Mini-Broncos are super light weight designed and styled to fit the new breed of mini-trucks and import models.

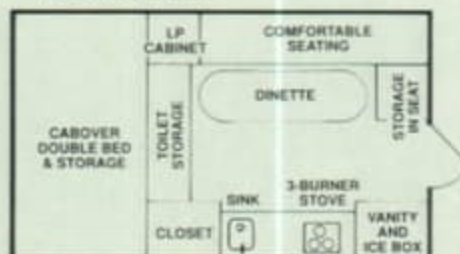
### Mini L



- Crank-up raisor system
- Thermo-core laminated construction

- Built for economy
- Automotive-designed
- Full-height entrance door standard on all models.

### Model 186



- Super Light Weight Construction.
- Model 186 — 935 lbs.

### Specifications

	Mini L	186
Weight	740	935
Box Length	88"	96"
Interior Open Height	75-1/2"	75-1/2"
Overall Length	129"	142"
Width	76"	86"
Overall Closed Height	55-1/4"	64"

Camper jacks, 12-Volt Gas Refrigerator, 3-Way Refrigerator and Furnace optional on all models. Cabinet air conditioner available in Mini-L and 186 models.



# Colt

The Palomino Colt is one of the most successful selling models in the industry. With the efficient side dinette, its low profile allows for easy towing and room to sleep six in comfort. The Colt offers all the features of a larger trailer, yet it's designed to be pulled by a compact car.





# Colt

The Palomino Colt is one of the most successful selling models in the industry. With the efficient side dinette, its low profile allows for easy towing and room to sleep six in comfort. The Colt offers all the features of a larger trailer, yet it's designed to be pulled by a compact car.







# Palomino

# FLOOR PLANS

## Fold-A-Wall



TXL - SC



TXL - LB



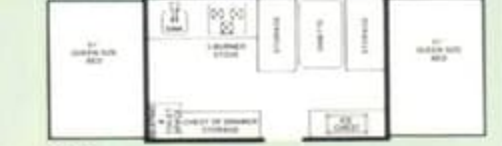
TXL - FG



MXL - LB



MXL - RG



SXL

## Crank-Up Lift System



MUSTANG - LB



MUSTANG - RG



STALLION



PINTO



YEARLING

## Super Lightweights



COLT



PONY

## WARRANTIES

### LIFETIME LIMITED WARRANTY

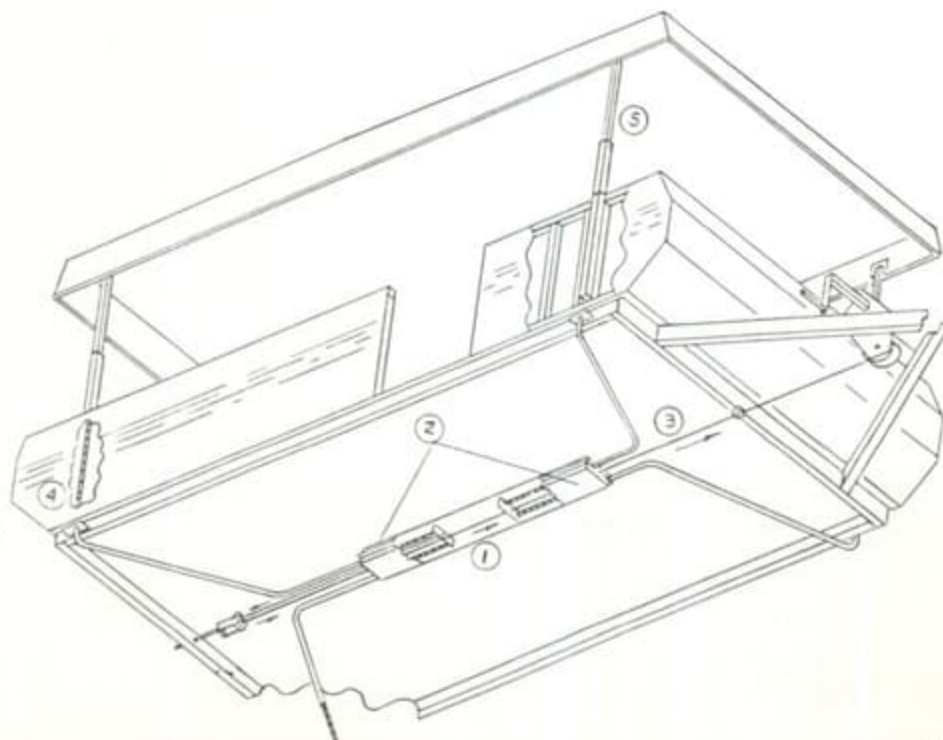
Vanguard Industries warrants lifetime limited warranties for the lifetime to the original owner for: Lifter Systems • Beds • Frames • Floors.

### TENT WARRANTY

Vinyl Tents manufactured by Vanguard Industries warranted for 5 years to original owner to be free from defects in materials and workmanship under normal use and service.

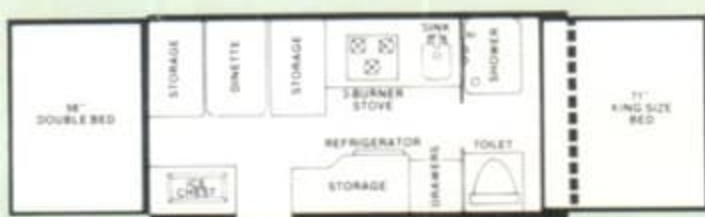
The Crank-Up Lift System on your Palomino provides you with a system easy to operate and simplicity to ensure years of trouble-free operation. Offered on all Fold-A-Walls and most Soft Side Camping Trailers.

1. The drive system is enclosed for protection from weather and road conditions.
2. The underneath location of the system allows for easy inspection and maintenance. Grease zerks are located top and bottom of main tube to allow yearly maintenance.
3. A single cable capable of 3,200 lbs. tensile strength rotates around the rear cable pulley and pushes the four flexible steel push rods up the lifter posts.
4. Flexible steel push rods.
5. Three steel plated lift post





## Fold-A-Wall



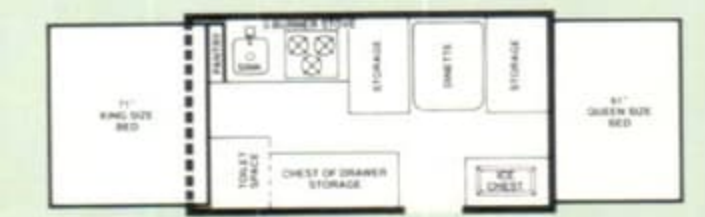
**TXL - SC**



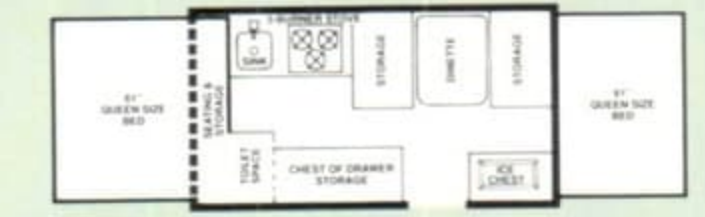
**TXL - LB**



**TXL - FG**



**MXL - LB**



**MXL - RG**



**SXL**

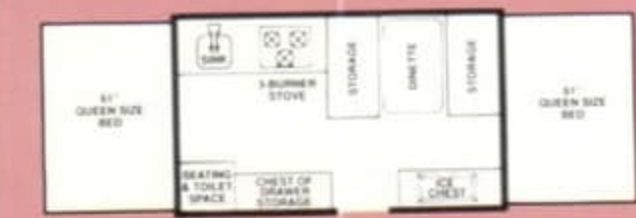
## Crank-Up Lift System



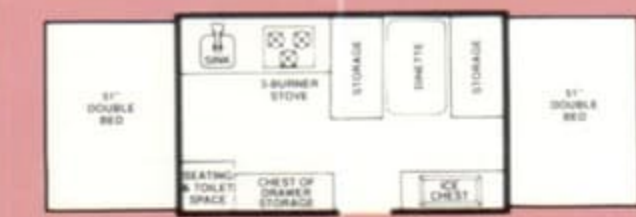
**MUSTANG - LB**



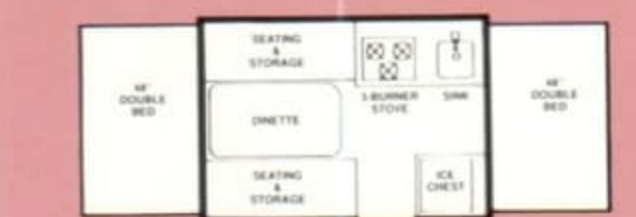
**MUSTANG - RG**



**STALLION**



**PINTO**



**YEARLING**

## Super Lightweights



**COLT**



**PONY**

## WARRANTIES

### LIFETIME LIMITED WARRANTY

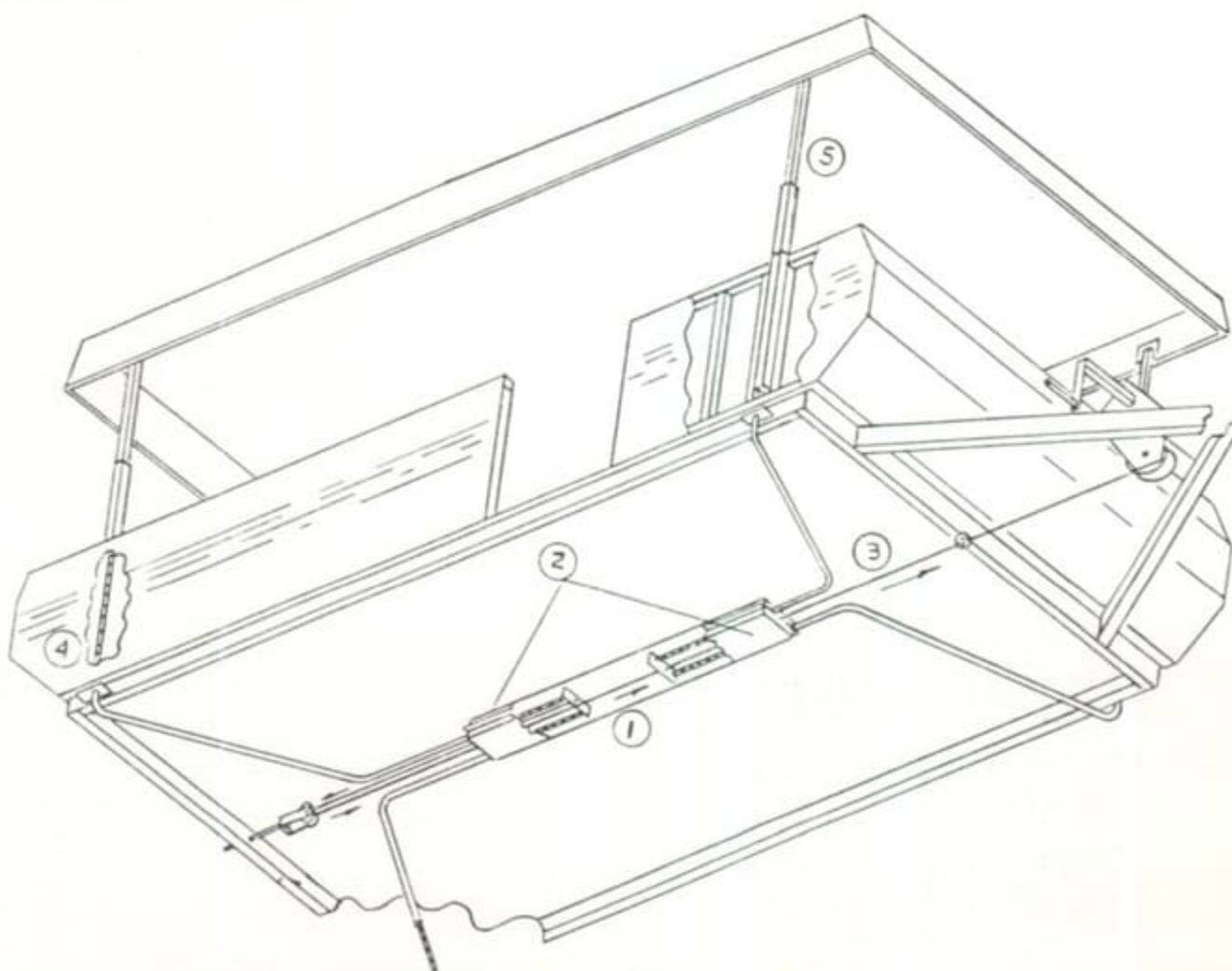
Vanguard Industries warrants lifetime limited warranties for the lifetime to the original owner for: Lifter Systems • Beds • Frames • Floors.

### TENT WARRANTY

Vinyl Tents manufactured by Vanguard Industries warranted for 5 years to original owner to be free from defects in materials and workmanship under normal use and service.

The Crank-Up Lift System on your Palomino provides you with a system easy to operate and simplicity to ensure years of trouble-free operation. Offered on all Fold-A-Walls and most Soft Side Camping Trailers.

1. The drive system is enclosed for protection from weather and road conditions.
2. The underneath location of the system allows for easy inspection and maintenance. Grease zerks are located top and bottom of main tube to allow yearly maintenance.
3. A single cable capable of 3,200 lbs. tensile strength rotates around the rear cable pulley and pushes the four flexible steel push rods up the lifter posts.
4. Flexible steel push rods.
5. Three stage plated lift post.





# Specifications

MODEL	FOLD-A-WALL				CRANK-UP LIFT SYSTEM				SUPERLIGHTWEIGHTS	
	TXL-SC	TXL	MXL	SXL	MUSTANG	STALLION	PINTO	YEARLING	COLT	PONY
Closed Body	6' 6" x 13' 9"	6' 6" x 13' 9"	6' 6" x 12' 1"	6' 6" x 10' 10"	6' 6" x 12' 2"	6' 6" x 10' 11"	6' 6" x 9' 8"	6' 6" x 8' 5"	6' 4" x 9' 8"	6' 4" x 8' 5"
Closed Overall	6' 7" x 16' 6"	6' 7" x 16' 6"	6' 7" x 14' 10"	6' 7" x 13' 7"	6' 7" x 15' 0"	6' 7" x 13' 9"	6' 7" x 13' 0"	6' 7" x 11' 8"	6' 7" x 13' 0"	6' 7" x 11' 8"
Closed Height	52-1/2"	52-1/2"	50-1/2"	50-1/2"	48"	48"	43"	43"	43"	43"
Open Length	23' 2"	23' 2"	22' 2"	20' 7"	21' 1"	20' 0"	18' 1"	16' 0"	18' 1"	16' 0"
Open Height	6' 3"	6' 3"	6' 3"	6' 3"	6' 3"	6' 3"	6' 5"	6' 5"	6' 5"	6' 5"
Hitch Weight - pounds	170	160	170	140	160	140	125	110	105	100
Axle Weight - pounds	1,820	1,720	1,320	1,250	1,280	1,240	985	885	890	820
570 x 8" Tires	—	—	—	—	—	—	5	5	5	5
20/800 X 10" Tires	—	—	5	5	5	5	0	0	0	0
R78 x 13" Tires	5	5	—	—	—	—	—	—	—	—
Spare Tire	0	0	0	0	0	0	0	0	0	0
Spare Tire Cover	0	0	0	0	0	0	0	0	0	0
Spare Tire Mount	5	5	5	5	5	5	5	5	5	5
Hydraulic Brakes	0	0	0	0	0	0	0	0	0	0
Torsion Axle	5	5	5	5	5	5	5	5	5	5
Open Wheel Well	5	5	5	5	5	5	5	5	5	5
Front Screw Jack with Dolly Wheel	5	5	5	5	5	5	5	5	5	5
Bumper and Jacks	5	5	5	5	5	5	5	5	5	5
5-Gallon Water Tank	—	—	—	—	—	—	—	—	—	—
10-Gallon Water Tank	—	5	5	5	5	5	5	—	5	—
16-Gallon Water Tank	5	—	—	—	—	—	—	—	—	—
City Water Hookup	5	5	5	5	5	5	5	5	5	5
Hot Water System	5	0	—	—	—	—	—	—	—	—
Shower	5	0	—	—	—	—	—	—	—	—
Dome Lights	5	5	5	5	5	5	5	5	5	5
9-Amp 12-Volt Power Converter	15-Amp	5	5	5	5	5	5	5	5	5
110-Volt Outlets	5	5	5	5	5	5	5	5	5	5
110-Volt Outside Receptacle	5	5	5	5	5	5	5	—	—	—
LP/12-Volt Refrigerator	5	0	0	0	0	0	—	—	—	—
Top Loading Ice Chest	5	5	5	5	5	5	5	5	5	5
3-Burner Stove	5	5	5	5	5	5	5	5	5	5
In/Out Stove	5	5	0	0	0	0	0	—	0	—
20-lb. Gas Bottle and Regulator	5	5	5	5	5	5	5	5	5	5
12,000 or 19,500 BTU Furnace	0	0	0	0	0	0	0	0	0	0
Laminated Construction	5	5	5	5	5	5	5	5	5	5
One-Piece Undercoated Floor	5	5	5	5	5	5	5	5	5	5
Radius Roof	5	5	5	5	5	5	5	5	5	5
Roof Vent	5	5	5	5	5	5	5	5	5	5
Awning Rail	5	5	5	5	5	5	5	5	5	5
Front Bed Areas	71"	LB - 71" FG - 61"	61"	61"	61"	61"	51"	48"	51"	48"
Rear Bed Areas	56"	56"	LB - 71" RG - 61"	61"	LB - 71" RG - 61"	61"	51"	48"	51"	48"
Deluxe Cushions and Mattresses	5	5	5	5	5	5	5	5	5	5
Window Curtains	5	5	5	5	5	5	0	0	0	0
Bed End Curtains	0	0	0	0	0	0	0	0	0	0
Vinyl Tent	5	5	5	5	5	5	5	5	5	5
Spring Loaded Lift Arms	0	0	0	0	—	—	—	—	5	5
Crank Lift System	0	0	0	0	5	5	5	5	—	—
Air Conditioner 7,500 BTU	0	0	0	0	0	0	0	—	0	—
Roof Ready for Air Conditioning	* 0	* 0	* 0	* 0	0	0	0	0	—	—
Electric Toilet	0	0	—	—	—	—	—	—	—	—
Sliding Step or Deluxe Step	0	0	0	0	0	0	0	0	0	0
Clothes Rack	(2) 5	(2) 5	(2) 5	(2) 5	(2) 5	(2) 5	(1) 5	(1) 5	(1) 5	(1) 5
Silverware Drawer Under Table	5	5	5	5	5	5	5	5	5	5
Mirrored Screen Door	5	5	5	5	5	5	5	5	5	5
Patio Light	5	5	5	5	5	5	5	5	5	5
Stainless Steel Sink	5	5	5	5	5	5	5	5	5	5
Fire Extinguisher	5	5	5	5	5	5	5	5	5	5
Self Sealing Jacks	(4)	(4)	(4)	(2)	(4)	(2)	(2)	(2)	(2)	(2)
Storage Trays	2	3	3	3	3	3	—	—	—	—
Canopy In A Bag	0	0	0	0	0	0	0	0	0	0
Deluxe Screen Room	0	0	0	0	0	0	0	0	0	0

5 = Standard 0 = Optional — = Not Available \* = Fold-A-Wall Crank-up Lift System Only

All Palominos built to comply with RV codes, and American National Standards Institute regulations. Specifications subject to change without notice. Specifications in this brochure are based on information at time of publication. Vanguard Industries of Michigan, Inc., reserves the right to make changes in materials, components and specifications and to discontinue models at any time without notice or obligation. Depending on materials, from time to time, weights may vary plus or minus five percent.



**Palomino**

**VANGUARD INDUSTRIES  
OF MICHIGAN, INC.**  
Colon, Michigan 49040  
Phone (616) 432-3271



# Specifications

MODEL	FOLD-A-WALL				CRANK-UP LIFT SYSTEM				SUPER LIGHTWEIGHTS	
	TXL-SC	TXL	MXL	SXL	MUSTANG	STALLION	PINTO	YEARLING	COLT	PONY
Closed Body	6' 6" x 13' 9"	6' 6" x 13' 9"	6' 6" x 12' 1"	6' 6" x 10' 10"	6' 6" x 12' 2"	6' 6" x 10' 11"	6' 6" x 9' 8"	6' 6" x 8' 5"	6' 4" x 9' 8"	6' 4" x 8' 5"
Closed Overall	6' 7" x 16' 6"	6' 7" x 16' 6"	6' 7" x 14' 10"	6' 7" x 13' 7"	6' 7" x 15' 0"	6' 7" x 13' 9"	6' 7" x 13' 0"	6' 7" x 11' 8"	6' 7" x 13' 0"	6' 7" x 11' 8"
Closed Height	52-1/2"	52-1/2"	50-1/2"	50-1/2"	48"	48"	43"	43"	43"	43"
Open Length	23' 2"	23' 2"	22' 2"	20' 7"	21' 1"	20' 0"	18' 1"	16' 0"	18' 1"	16' 0"
Open Height	6' 3"	6' 3"	6' 3"	6' 3"	6' 3"	6' 3"	6' 5"	6' 5"	6' 5"	6' 5"
Hitch Weight - pounds	170	160	170	140	160	140	125	110	105	100
Axle Weight - pounds	1,820	1,720	1,320	1,250	1,280	1,240	985	885	890	820
570 x 8" Tires	—	—	—	—	—	—	S	S	S	S
20/800 X 10" Tires	—	—	S	S	S	S	O	O	O	O
R78 x 13" Tires	S	S	—	—	—	—	—	—	—	—
Spare Tire	O	O	O	O	O	O	O	O	O	O
Spare Tire Cover	O	O	O	O	O	O	O	O	O	O
Spare Tire Mount	S	S	S	S	S	S	S	S	S	S
Hydraulic Brakes	O	O	O	O	O	O	O	O	O	O
Torsion Axle	S	S	S	S	S	S	S	S	S	S
Open Wheel Well	S	S	S	S	S	S	S	S	S	S
Front Screw Jack with Dolly Wheel	S	S	S	S	S	S	S	S	S	S
Bumper and Jacks	S	S	S	S	S	S	S	S	S	S
5-Gallon Water Tank	—	—	—	—	—	—	—	S	—	S
10-Gallon Water Tank	—	S	S	S	S	S	S	—	S	—
16-Gallon Water Tank	S	—	—	—	—	—	—	—	—	—
City Water Hookup	S	S	S	S	S	S	S	S	S	S
Hot Water System	S	O	—	—	—	—	—	—	—	—
Shower	S	O	—	—	—	—	—	—	—	—
Dome Lights	S	S	S	S	S	S	S	S	S	S
9-Amp 12-Volt Power Converter	15-Amp	S	S	S	S	S	S	S	S	S
110-Volt Outlets	S	S	S	S	S	S	S	S	S	S
110-Volt Outside Receptacle	S	S	S	S	S	S	S	—	—	—
LP/12-Volt Refrigerator	S	O	O	O	O	O	—	—	—	—
Top Loading Ice Chest	S	S	S	S	S	S	S	S	S	S
3-Burner Stove	S	S	S	S	S	S	S	S	S	S
In/Out Stove	S	S	O	O	O	O	O	—	O	—
20-lb. Gas Bottle and Regulator	S	S	S	S	S	S	S	S	S	S
12,000 or 19,500 BTU Furnace	O	O	O	O	O	O	O	O	O	O
Laminated Construction	S	S	S	S	S	S	S	S	S	S
One-Piece Undercoated Floor	S	S	S	S	S	S	S	S	S	S
Radius Roof	S	S	S	S	S	S	S	S	S	S
Roof Vent	S	S	S	S	S	S	S	S	S	S
Awning Rail	S	S	S	S	S	S	S	S	S	S
Front Bed Areas	71"	LB - 71" FG - 61"	61"	61"	61"	61"	51"	48"	51"	48"
Rear Bed Areas	56"	56"	LB - 71" RG - 61"	61"	LB - 71" RG - 61"	61"	51"	48"	51"	48"
Deluxe Cushions and Mattresses	S	S	S	S	S	S	S	S	S	S
Window Curtains	S	S	S	S	S	S	O	O	O	O
Bed End Curtains	O	O	O	O	O	O	O	O	O	O
Vinyl Tent	S	S	S	S	S	S	S	S	S	S
Spring Loaded Lift Arms	O	O	O	O	—	—	—	—	S	S
Crank Lift System	O	O	O	O	S	S	S	S	—	—
Air Conditioner 7,500 BTU	O	O	O	O	O	O	O	—	O	—
Roof Ready for Air Conditioning	* O	* O	* O	* O	O	O	O	O	—	—
Electric Toilet	O	O	—	—	—	—	—	—	—	—
Sliding Step or Deluxe Step	O	O	O	O	O	O	O	O	O	O
Clothes Rack	(2) S	(2) S	(2) S	(2) S	(2) S	(2) S	(1) S	(1) S	(1) S	(1) S
Silverware Drawer Under Table	S	S	S	S	S	S	S	S	S	S
Mirrored Screen Door	S	S	S	S	S	S	S	S	S	S
Patio Light	S	S	S	S	S	S	S	S	S	S
Stainless Steel Sink	S	S	S	S	S	S	S	S	S	S
Fire Extinguisher	S	S	S	S	S	S	S	S	S	S
Self Soring Jacks	(4)	(4)	(4)	(2)	(4)	(2)	(2)	(2)	(2)	(2)
Storage Trays	2	3	3	3	3	3	—	—	—	—
Canopy In A Bag	O	O	O	O	O	O	O	O	O	O
Deluxe Screen Room	O	O	O	O	O	O	O	O	O	O

S = Standard    O = Optional    — = Not Available    \* = Fold-A-Wall Crank-up Lift System Only

All Palominos built to comply with RVI codes, and American National Standards Institute regulations. Specifications subject to change without notice. Specifications in this brochure are based on information at time of publication. Vanguard Industries of Michigan, Inc., reserves the right to make changes in materials, components and specifications and to discontinue models at any time without notice or obligation. Depending on materials, from time to time, weights may vary plus or minus five percent.