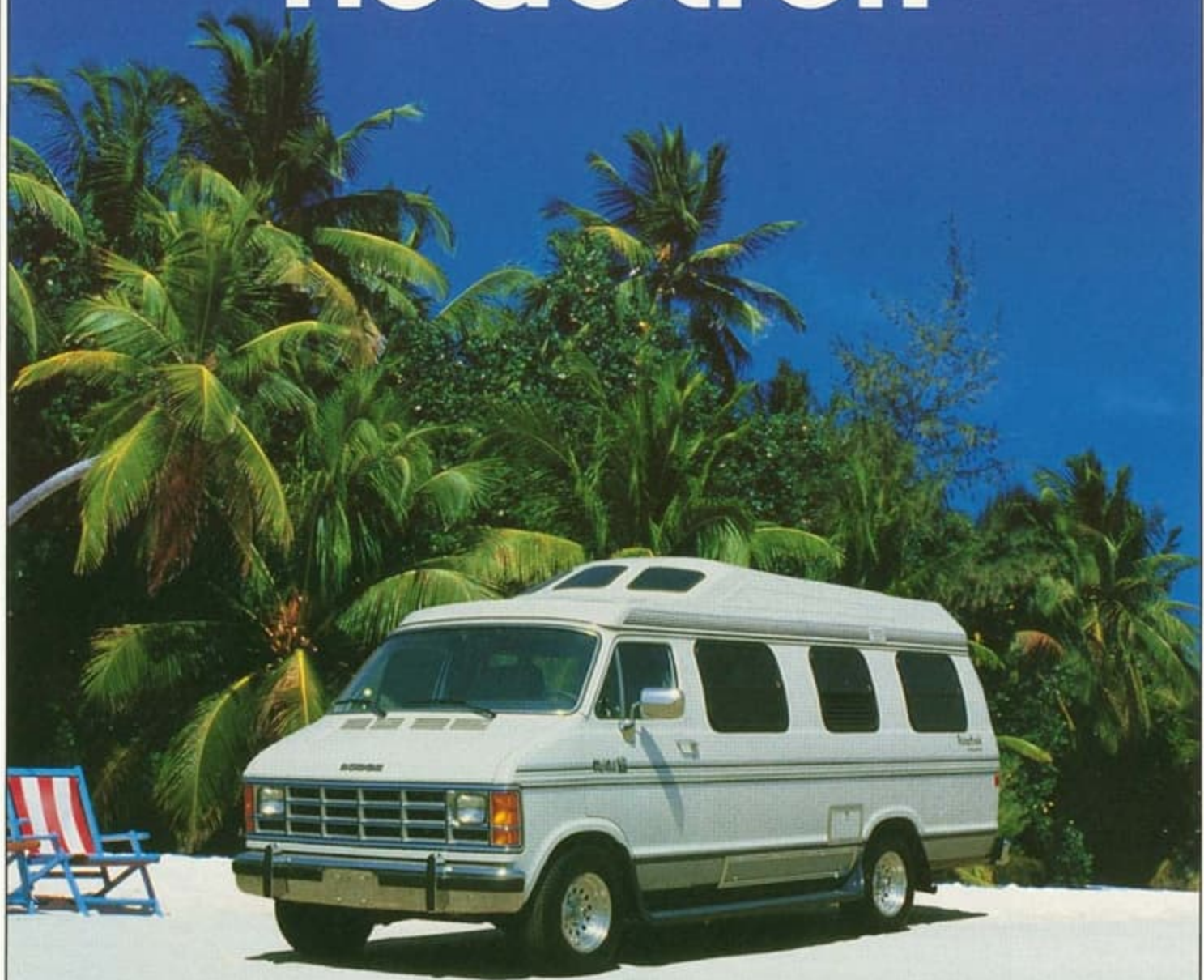


THE VAN THAT THINKS IT'S A MOTORHOME.™

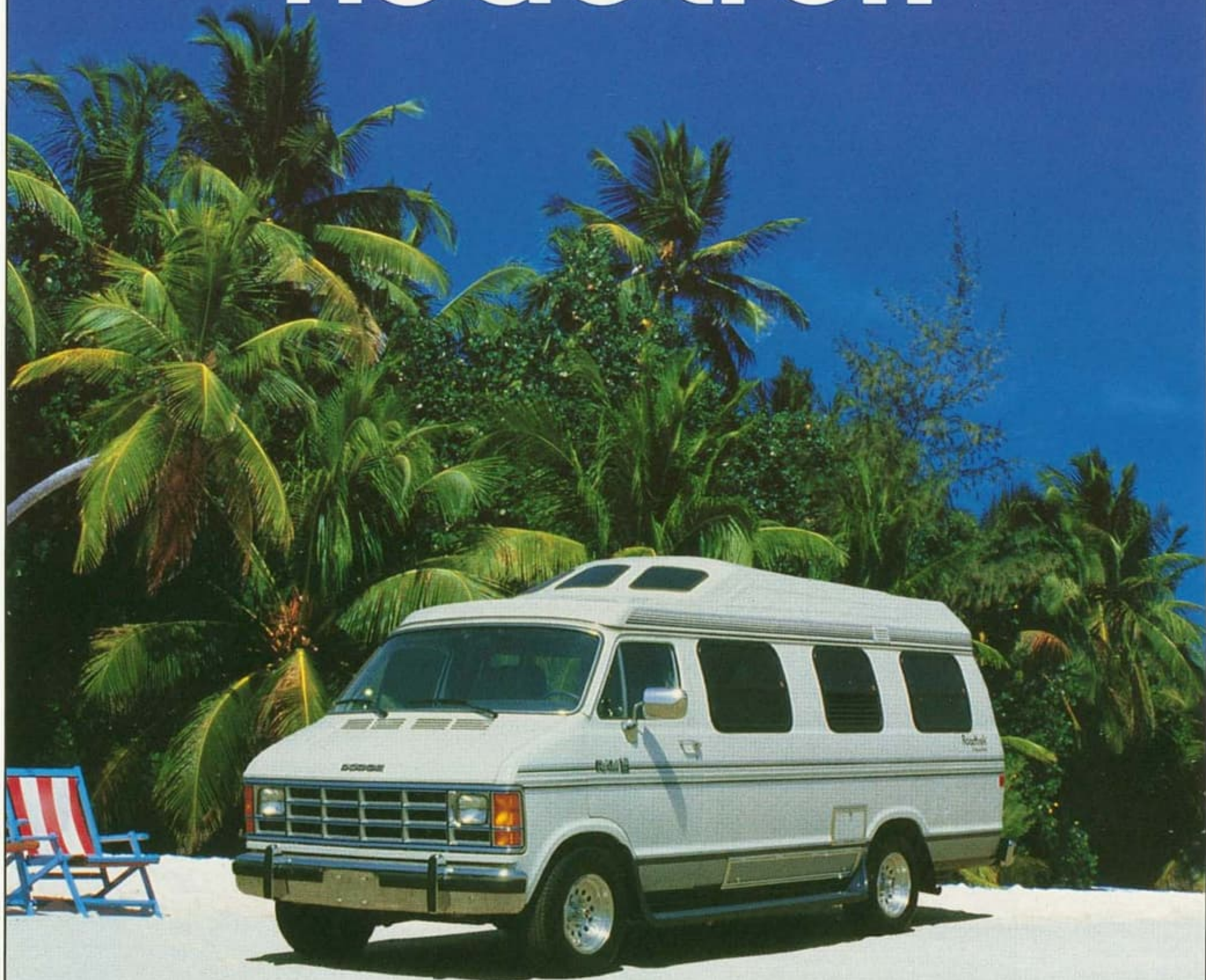
Roadtrek™



by Home & Park™
Motorhomes

THE VAN THAT THINKS IT'S A MOTORHOME.™®

Roadtrek™



by Home & Park™
Motorhomes

The Van That Thinks

How it all started over 15 years ago...

Jac Hanemaayer, of Dutch descent, has been a resident of Kitchener, Ontario since 1953. Since that time he has become involved in many endeavors including home construction, residential and commercial land development, packaging equipment importation and distribution, kaolin mining and processing, and advanced technology to separate liquids and solids.

In 1974, Mr. Hanemaayer became interested in purchasing a motor home for personal use. He liked the spacious room and comfort offered by a Class 'A' or 'C' motor home but was not interested in becoming a "weekend bus driver" of these full size motor homes; the convenience and mobility of a small vehicle were of paramount importance. Consequently, he investigated the Class 'B'

motor home or camper van market. To his dismay, he could not find a well designed recreational vehicle with all the amenities of a larger motor home within the exterior dimensions of a van. Using his extensive experience in the design and utilization of space, he designed one for himself and took it to a small camper van manufacturer named Home & Park Vehicles Ltd. When his van was completed, he was so pleased with its efficiency, versatility and practicality that he acquired the company. ("He liked it so much, he bought the company!")

Some time later, Hanemaayer changed the name to **Home & Park Motorhomes** and continued to manufacture a conventional high top unit with side dinette or gaucho and rear bathroom. Sales levels were very modest until after 1980 when he completely redesigned the unit with a lower roof line, lowered floor and innovative three section floor plan; the **Roadtrek Motorhome Van** was born!

A decade later, **Home & Park** enjoys a very healthy position. We have grown to become the largest camper van manufacturer in Canada and one of the leaders in North America with Canadian and American dealers from coast to coast. In our modern 50,000 square foot production facility (1), we have increased output at an average annual rate in excess of 30% for the last six years! With this combination of excellent people, a high quality, and innovative product, we are confident that **The Van That Thinks It's A Motor Home** will soon become the best selling camper van in North America.

Roadtrek Is A Van.

Before we tell you about why **Roadtrek** thinks it's a motor home, let's discuss a few qualities that prove it's still really a van.

1. Modern 50,000 square foot manufacturing facility is situated on 7 acres of industrial land.



The Van That Thinks

How it all started over 15 years ago...

Jac Hanemaayer, of Dutch descent, has been a resident of Kitchener, Ontario since 1953. Since that time he has become involved in many endeavors including home construction, residential and commercial land development, packaging equipment importation and distribution, kaolin mining and processing, and advanced technology to separate liquids and solids.

In 1974, Mr. Hanemaayer became interested in purchasing a motor home for personal use. He liked the spacious room and comfort offered by a Class 'A' or 'C' motor home but was not interested in becoming a "weekend bus driver" of these full size motor homes; the convenience and mobility of a small vehicle were of paramount importance. Consequently, he investigated the Class 'B'

motor home or camper van market. To his dismay, he could not find a well designed recreational vehicle with all the amenities of a larger motor home within the exterior dimensions of a van. Using his extensive experience in the design and utilization of space, he designed one for himself and took it to a small camper van manufacturer named Home & Park Vehicles Ltd. When his van was completed, he was so pleased with its efficiency, versatility and practicality that he acquired the company. ("He liked it so much, he bought the company!")

Some time later, Hanemaayer changed the name to **Home & Park Motorhomes** and continued to manufacture a conventional high top unit with side dinette or gaucho and rear bathroom. Sales levels were very modest until after 1980 when he completely redesigned the unit with a lower roof line, lowered floor and innovative three section floor plan; the **Roadtrek Motorhome Van** was born!

A decade later, **Home & Park** enjoys a very healthy position. We have grown to become the largest camper van manufacturer in Canada and one of the leaders in North America with Canadian and American dealers from coast to coast. In our modern 50,000 square foot production facility (1), we have increased output at an average annual rate in excess of 30% for the last six years! With this combination of excellent people, a high quality, and innovative product, we are confident that **The Van That Thinks It's A Motor Home** will soon become the best selling camper van in North America.

Roadtrek Is A Van.

Before we tell you about why **Roadtrek** thinks it's a motor home, let's discuss a few qualities that prove it's still really a van.

1. Modern 50,000 square foot manufacturing facility is situated on 7 acres of industrial land.



It's A Motor Home.

Roadtrek Is Fuel Efficient.

Any vehicle's fuel efficiency is directly dependent on its aerodynamics and weight. **Roadtrek** is much more streamlined than traditional motor homes or camper vans (2). It's astonishing aerodynamics can be attributed to a few basic factors. The profile is not only lower, but raises the wind much more efficiently. Once raised, the wind travels effortlessly along the rearward sloping roof line and down the tapered rear of the vehicle.

But, the aerodynamics don't end there. To maintain the low roof line, the 110V air conditioner is built into the rear cabinets rather than installing a roof mount unit (3).

Roadtrek is much lighter than the typical motor home. This too, contributes to its fantastic fuel economy. Designed to be streamlined

and lighter, **Roadtrek** is more economical to operate. It's as simple as that.

"We have now driven 6500 miles from our home to Miami Beach, then cross country to California. We have been on thruways and on secondary roads... We were pleased with the power available for quick acceleration or climbing mountain roads. The riding characteristics are excellent... We are averaging 15 - 16 miles per gallon of gas."

Ruth & Frank Chambers
McDonough, New York

"Comparison with many other units showed the Roadtrek was what we wanted. Space, storage, sleeping capacity with economy of fuel were important in our decision (to buy). Nice folks to deal with!"

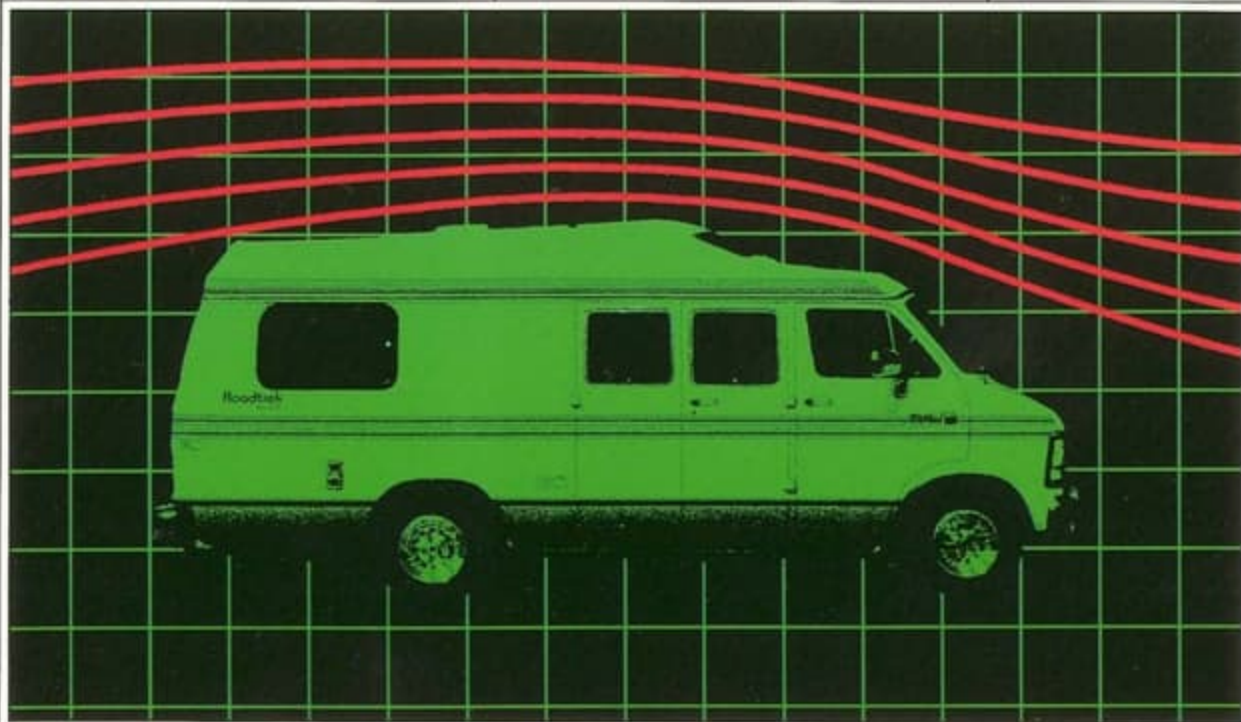
LaVerne W. Weber
Ann Arbor, Michigan

But Is Roadtrek Simple And Comfortable To Drive?

It certainly is! Unlike larger motor homes, **Roadtrek** is as easy to drive as the family station wagon. Because the body has not been widened like other wide body vans, it is effortlessly manoeuvred through congested downtown traffic or into a crowded parking lot.

Not only is **Roadtrek** simple to drive and park, but its comfort rivals even the most luxurious automobiles. Each captain's seat is equipped with an adjustable lumbar support that was orthopedically designed in Austria (4). Engineered to maximize comfort and minimize fatigue, they are the same supports used by world renowned automobile manufacturers Porsche and Mercedes.

The captain's seats themselves have been constructed using the superior



2. Effective aerodynamics, low overall height and light weight maximize fuel efficiency and improve handling.

It's A Motor Home.

Roadtrek Is Fuel Efficient.

Any vehicle's fuel efficiency is directly dependent on its aerodynamics and weight. **Roadtrek** is much more streamlined than traditional motor homes or camper vans (2). It's astonishing aerodynamics can be attributed to a few basic factors. The profile is not only lower, but raises the wind much more efficiently. Once raised, the wind travels effortlessly along the rearward sloping roof line and down the tapered rear of the vehicle.

But, the aerodynamics don't end there. To maintain the low roof line, the 110V air conditioner is built into the rear cabinets rather than installing a roof mount unit (3).

Roadtrek is much lighter than the typical motor home. This too, contributes to its fantastic fuel economy. Designed to be streamlined

and lighter, **Roadtrek** is more economical to operate. It's as simple as that.

"We have now driven 6500 miles from our home to Miami Beach, then cross country to California. We have been on thruways and on secondary roads... We were pleased with the power available for quick acceleration or climbing mountain roads. The riding characteristics are excellent... We are averaging 15 - 16 miles per gallon of gas."

*Ruth & Frank Chambers
McDonough, New York*

"Comparison with many other units showed the Roadtrek was what we wanted. Space, storage, sleeping capacity with economy of fuel were important in our decision (to buy). Nice folks to deal with!"

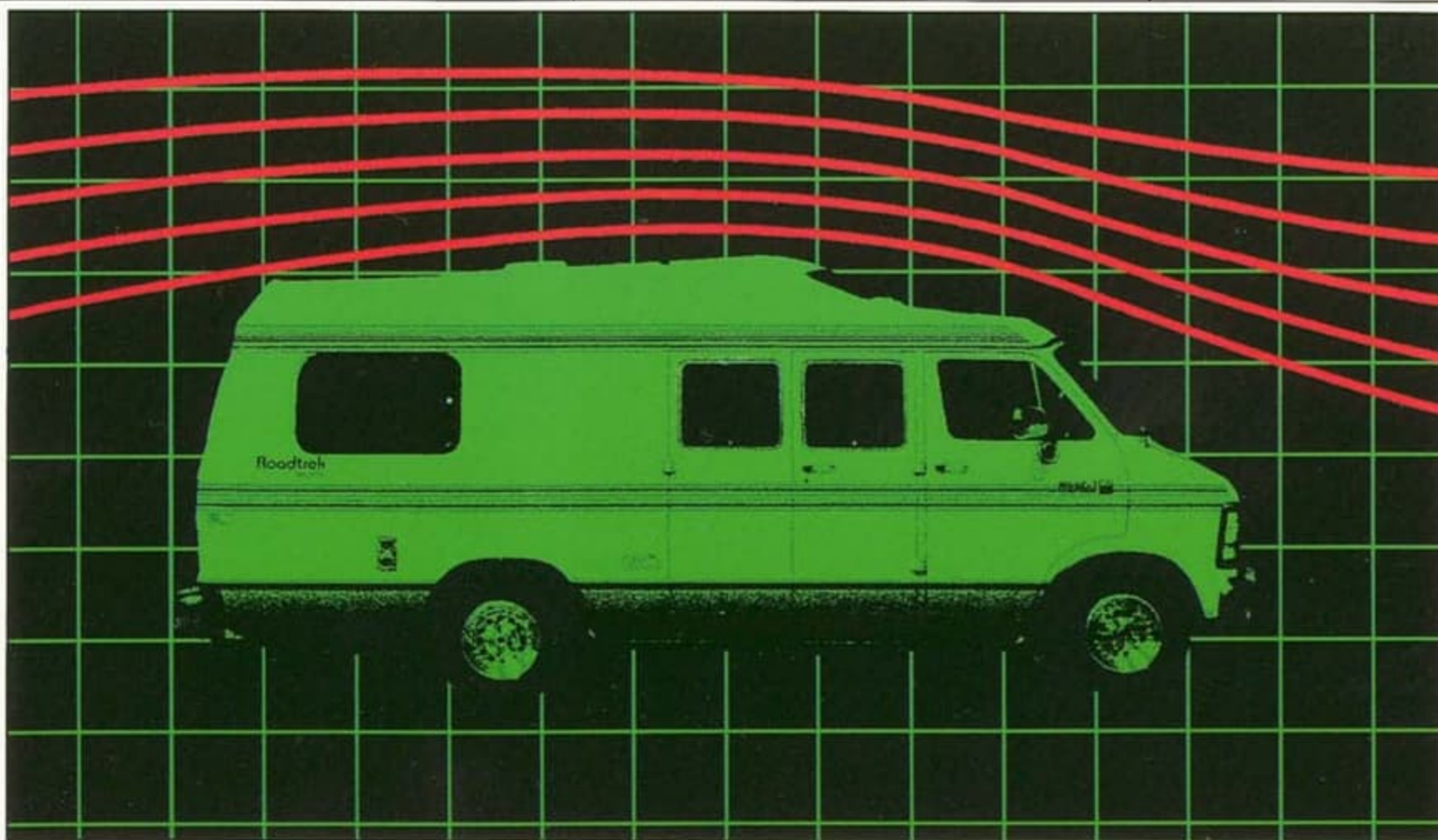
*LaVerne W. Weber
Ann Arbor, Michigan*

But Is Roadtrek Simple And Comfortable To Drive?

It certainly is! Unlike larger motor homes, **Roadtrek** is as easy to drive as the family station wagon. Because the body has not been widened like other wide body vans, it is effortlessly manoeuvred through congested downtown traffic or into a crowded parking lot.

Not only is **Roadtrek** simple to drive and park, but its comfort rivals even the most luxurious automobiles. Each captain's seat is equipped with an adjustable lumbar support that was orthopedically designed in Austria (4). Engineered to maximize comfort and minimize fatigue, they are the same supports used by world renowned automobile manufacturers Porsche and Mercedes.

The captain's seats themselves have been constructed using the superior



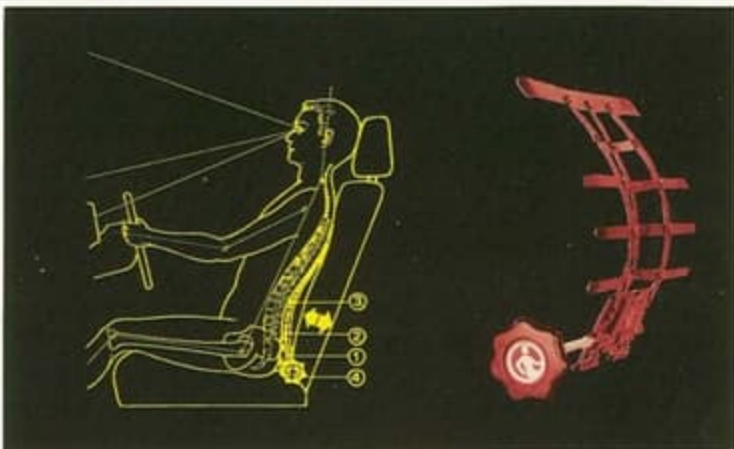
2. Effective aerodynamics, low overall height and light weight maximize fuel efficiency and improve handling.

DRIVING

3. A 110V air conditioner built into the upper rear cabinet (see 16) provides cool comfort while maintaining Roadtrek's aerodynamic shape and low roof line. Only inconspicuous flush grills are externally visible.



4. Orthopedically designed Austrian adjustable lumbar supports are located in each captain's seat to maximize comfort and minimize fatigue.



5. All captain's seat cushions are produced using High Resilience Molding. Although more expensive, the HRM process provides superior durability and consistent rigidity to the common fabrication process.



6. Integrated venting system (left window) allows effective ventilation of the refrigerator while maintaining the aesthetic appearance of Roadtrek. Awning windows provide superior air circulation during foul weather without soaking the interior.



process of 'High Resilience Molding' (HRM). Most RV manufacturers produce their seat foam using a process known as 'fabrication'; foam is cut up and glued together to achieve the seat's desired shape. After years of use, this construction is prone to early breakdown with subsequent loss of shape and support. On the other hand, we use the same method as the automotive manufacturers. In the HRM process, expensive molds are created in the shape of the seat's base, back and arms. Two liquid materials are injected into the molds and undergo a chemical reaction to form foam. As a result, each seat component is one consistent piece of foam which will maintain its shape and support for years to come (5). Other manufacturers may not spend money on hidden value such as better seat foam. We believe in investing that extra dollar to provide the best product possible.

You'll appreciate the lumbar supports, supportive captain's seats, generous window area, and many other standard automotive features when you're midway through a lengthy journey.

Roadtrek Is Practical For Everyday Use.

Because it's easy to drive, economical and comfortable, your Roadtrek need not sit idle between vacations. And not merely for day long trips to your favorite resort, but likewise for daily commuting.

"(We selected a Home & Park because we) can use it as a 2nd car, and still doesn't look like a 'big rig' in the driveway. Has all the conveniences needed for traveling."

*James A. Perkins
Boothwyn, Pennsylvania*

Roadtrek Looks Like A Van.

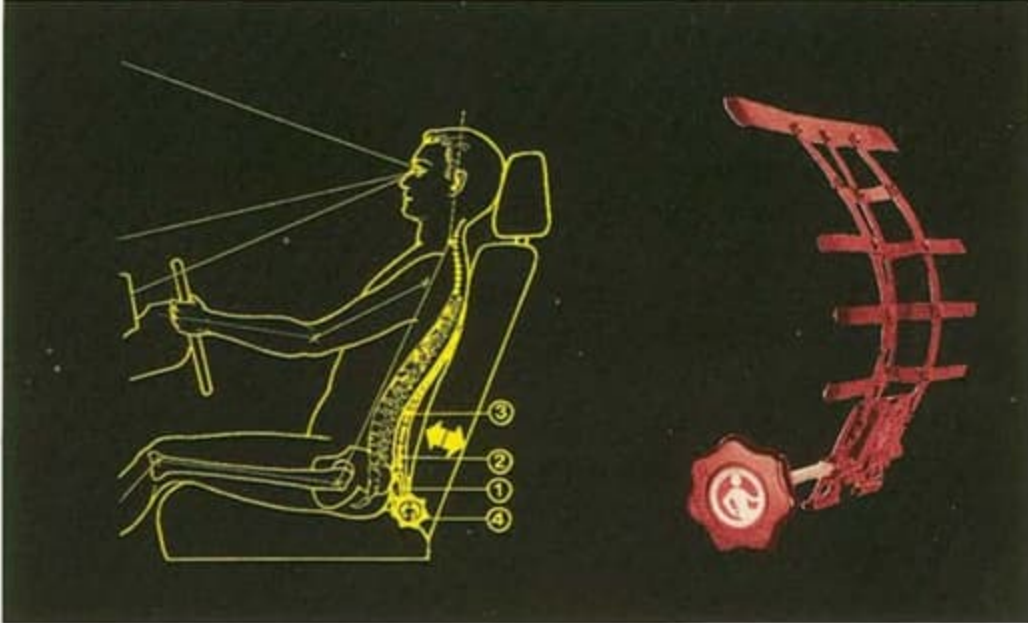
We have gone to great lengths to ensure that your Roadtrek

DRIVING

3. A 110V air conditioner built into the upper rear cabinet (see 16) provides cool comfort while maintaining Roadtrek's aerodynamic shape and low roof line. Only inconspicuous flush grills are externally visible.



4. Orthopedically designed Austrian adjustable lumbar supports are located in each captain's seat to maximize comfort and minimize fatigue.



5. All captain's seat cushions are produced using High Resilience Molding. Although more expensive, the HRM process provides superior durability and consistent rigidity to the common fabrication process.



6. Integrated venting system (left window) allows effective ventilation of the refrigerator while maintaining the aesthetic appearance of Roadtrek. Awning windows provide superior air circulation during foul weather without soaking the interior.



process of 'High Resilience Molding' (HRM). Most RV manufacturers produce their seat foam using a process known as 'fabrication'; foam is cut up and glued together to achieve the seat's desired shape. After years of use, this construction is prone to early breakdown with subsequent loss of shape and support. On the other hand, we use the same method as the automotive manufacturers. In the HRM process, expensive molds are created in the shape of the seat's base, back and arms. Two liquid materials are injected into the molds and undergo a chemical reaction to form foam. As a result, each seat component is one consistent piece of foam which will maintain its shape and support for years to come (5). Other manufacturers may not spend money on hidden value such as better seat foam. We believe in investing that extra dollar to provide the best product possible.

You'll appreciate the lumbar supports, supportive captain's seats, generous window area, and many other standard automotive features when you're midway through a lengthy journey.

Roadtrek Is Practical For Everyday Use.

Because it's easy to drive, economical and comfortable, your **Roadtrek** need not sit idle between vacations. And not merely for day long trips to your favorite resort, but likewise for daily commuting.

"(We selected a Home & Park because we) can use it as a 2nd car, and still doesn't look like a 'big rig' in the driveway. Has all the conveniences needed for traveling."

*James A. Perkins
Boothwyn, Pennsylvania*

Roadtrek Looks Like A Van.

We have gone to great lengths to ensure that your **Roadtrek**

STYLING



7. By simply swiveling the two front captain's seats, a spacious seating area for four is created. Patented cloverleaf dining table (optional), with its extendible and retractable "leaves", combines the ample surface area of a kitchen table with the convenient size of a cocktail table.

maintains the automotive appearance of a van. To achieve this goal, several attributes of conventional recreational vehicles are avoided. Rather than having a roof top air conditioner ruining the **Roadtrek's** appearance, ours is located inside the upper rear cabinets (16). Nothing is visible from the outside except flush mounted grills (3).

To keep the exterior from becoming cluttered with an array of vents, fills and connections, we have developed our Integrated Venting System and utility access door. The refrigerator vent has been disguised as a black louvered grill within a black window frame (6).

Further, such unsightly items as the LP gas fill, gauge and shut off valve, city water and electrical connections, and power cord and water hose storage areas are all located behind one access door rather than being individually

installed down the side of the van (6). Even the fresh water fill is situated inside the passenger door opening instead of on the exterior. In fact, because of the pleasing appearance, you'll be proud to drive anywhere in your new **Roadtrek!**

"It's simply gorgeous!"

*Gloria A. Muller & Olga Maksymchak
Phita, Pennsylvania*

Why Does Roadtrek Think It's A Motor Home?

Because within the exterior dimensions of a van lies a true motor home. Most of their qualities can be found in the **Roadtrek Motor Home Van.**

"They coupled the requirements of a motor home with the handling ease of a van."

*John W. Holland
Wilmington, Delaware*

Although small on the outside, once inside it's difficult to believe you're in a van at all. **Home & Park** takes advantage of the cab area as living space. By simply swiveling the driver's and passenger's seats, a comfortable seating area is formed with ample room for eating, entertaining or just relaxing (7).

And when it comes to daily living, **Roadtrek** is out in front. Inside there is full standing height for persons up to six feet. But how do we do this with such a low roof line? It's simple. Instead of raising the roof more, we just lowered the floor. That way, a comfortable standing height and maximum fuel efficiency can be maintained.

But the comfort and spaciousness doesn't end there. **Roadtrek** can sleep two to four people in large comfortable beds of thick and even foam without a bump, sag or gap to endure. The **Roadtrek Versatile** or

STYLING



7. By simply swiveling the two front captain's seats, a spacious seating area for four is created. Patented cloverleaf dining table (optional), with its extendible and retractable "leaves", combines the ample surface area of a kitchen table with the convenient size of a cocktail table.

maintains the automotive appearance of a van. To achieve this goal, several attributes of conventional recreational vehicles are avoided. Rather than having a roof top air conditioner ruining the **Roadtrek's** appearance, ours is located inside the upper rear cabinets (16). Nothing is visible from the outside except flush mounted grills (3).

To keep the exterior from becoming cluttered with an array of vents, fills and connections, we have developed our Integrated Venting System and utility access door. The refrigerator vent has been disguised as a black louvered grill within a black window frame (6).

Further, such unsightly items as the LP gas fill, gauge and shut off valve, city water and electrical connections, and power cord and water hose storage areas are all located behind one access door rather than being individually

installed down the side of the van (6). Even the fresh water fill is situated inside the passenger door opening instead of on the exterior. In fact, because of the pleasing appearance, you'll be proud to drive anywhere in your new **Roadtrek!**

"It's simply gorgeous!"

*Gloria A. Muller & Olga Maksymchak
Phita, Pennsylvania*

Why Does Roadtrek Think It's A Motor Home?

Because within the exterior dimensions of a van lies a true motor home. Most of their qualities can be found in the **Roadtrek Motor Home Van.**

"They coupled the requirements of a motor home with the handling ease of a van."

*John W. Holland
Wilmington, Delaware*

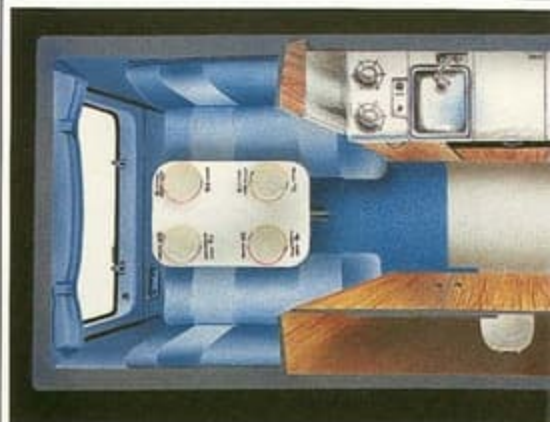
Although small on the outside, once inside it's difficult to believe you're in a van at all. **Home & Park** takes advantage of the cab area as living space. By simply swiveling the driver's and passenger's seats, a comfortable seating area is formed with ample room for eating, entertaining or just relaxing (7).

And when it comes to daily living, **Roadtrek** is out in front. Inside there is full standing height for persons up to six feet. But how do we do this with such a low roof line? It's simple. Instead of raising the roof more, we just lowered the floor. That way, a comfortable standing height and maximum fuel efficiency can be maintained.

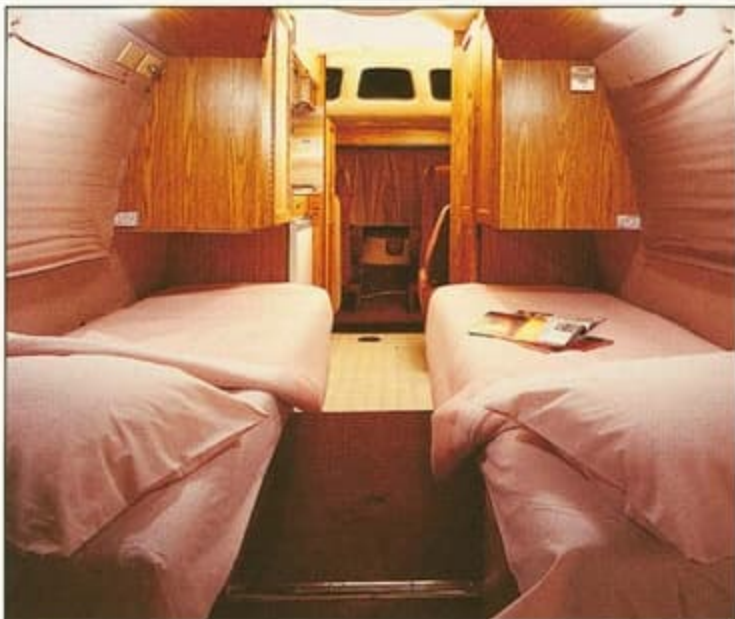
But the comfort and spaciousness doesn't end there. **Roadtrek** can sleep two to four people in large comfortable beds of thick and even foam without a bump, sag or gap to endure. The **Roadtrek Versatile** or

SLEEPING

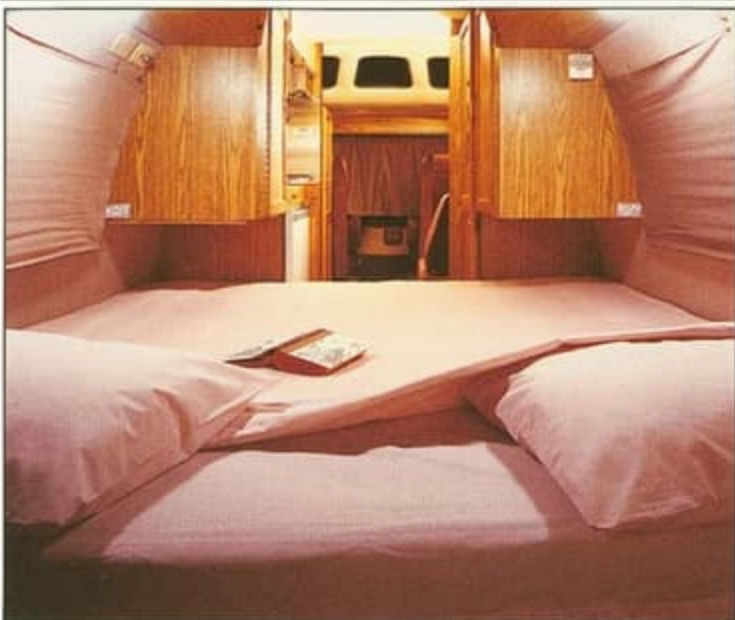
8. Roadtrek Versatile and Independent are equipped with a comfortable 6'1" x 52" double bed that converts to a spacious dinette.



9. Roadtrek Popular offers twin beds (6'3" x 30" and 6'1" x 30") for those who demand separate sleeping arrangements.



10. For those who require more lengthy or roomy sleeping quarters, Roadtrek Popular can also be converted to a 6'3" (max.) x 6'1" king-size bed.



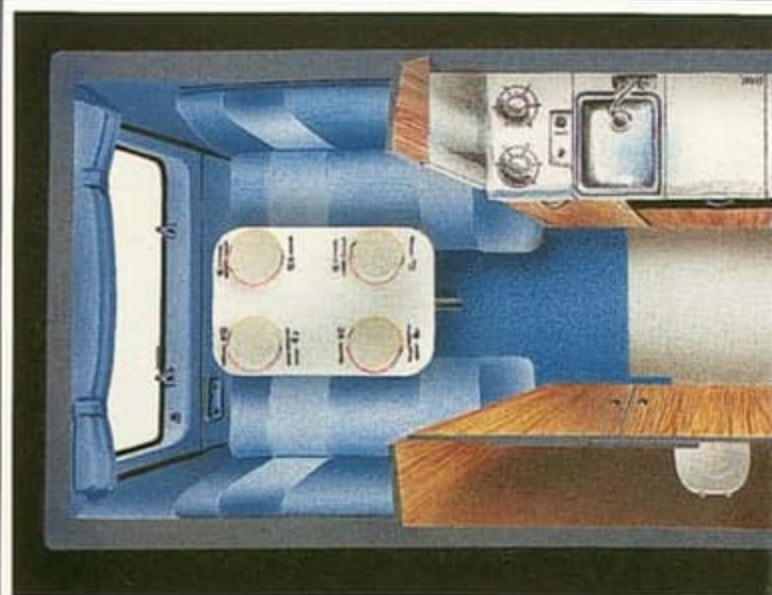
Independent can sleep four in the two single beds at the front and the double bed at the rear (8). If separate sleeping arrangements are desired, the **Roadtrek Popular** provides very comfortable twin beds (9). For those who require more lengthy or roomy sleeping accommodations, the **Roadtrek Popular** can also be converted to a king-size bed that is open at the foot end to stretch out your toes! (10)

And if there are only two of you, equip your **Roadtrek Versatile** or **Independent** with our patented cloverleaf dining table (7). With this second spacious eating area at the front, you can leave the dinette made up as a bed most of the time. That way there is no need to make up the bed every night before you retire or set up the dinette every morning after you rise. Now compare that with anything else on the market!

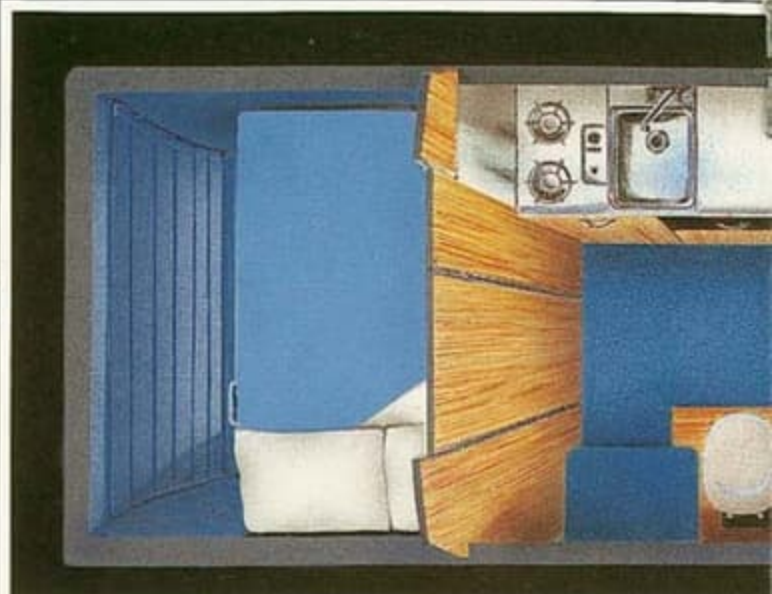
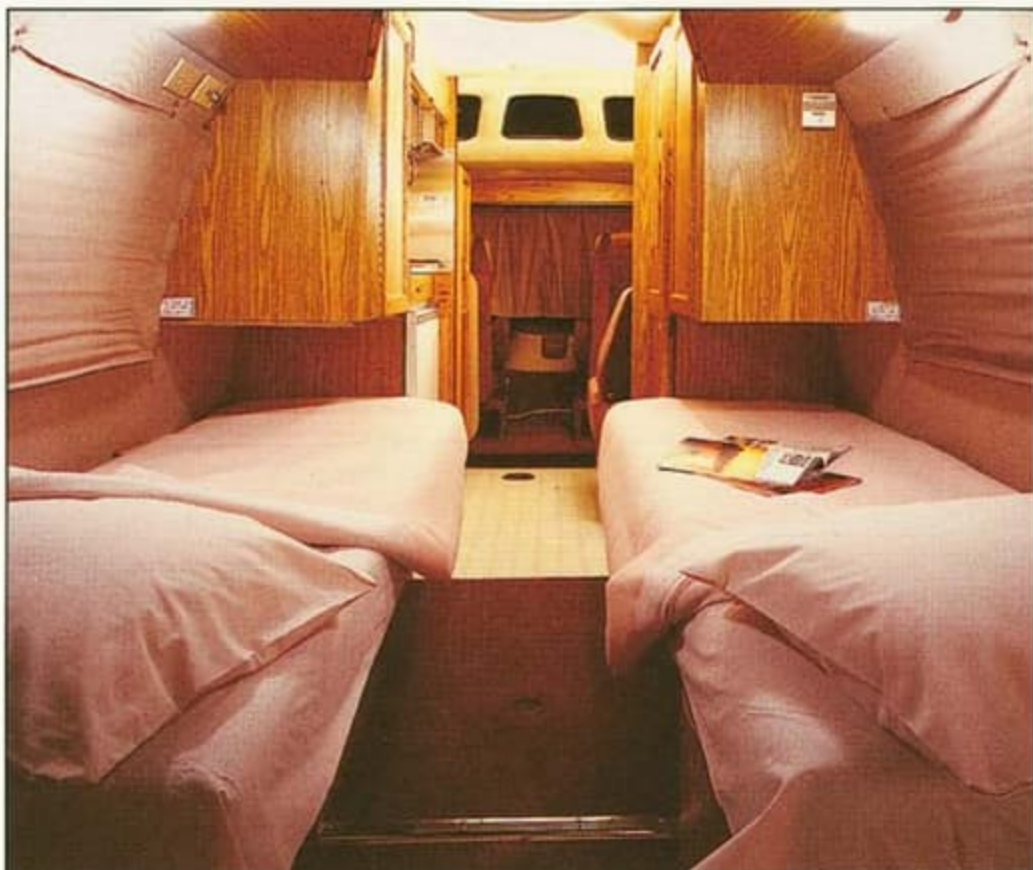
Access to the bathroom at night is made convenient by its central location; no climbing over several

SLEEPING

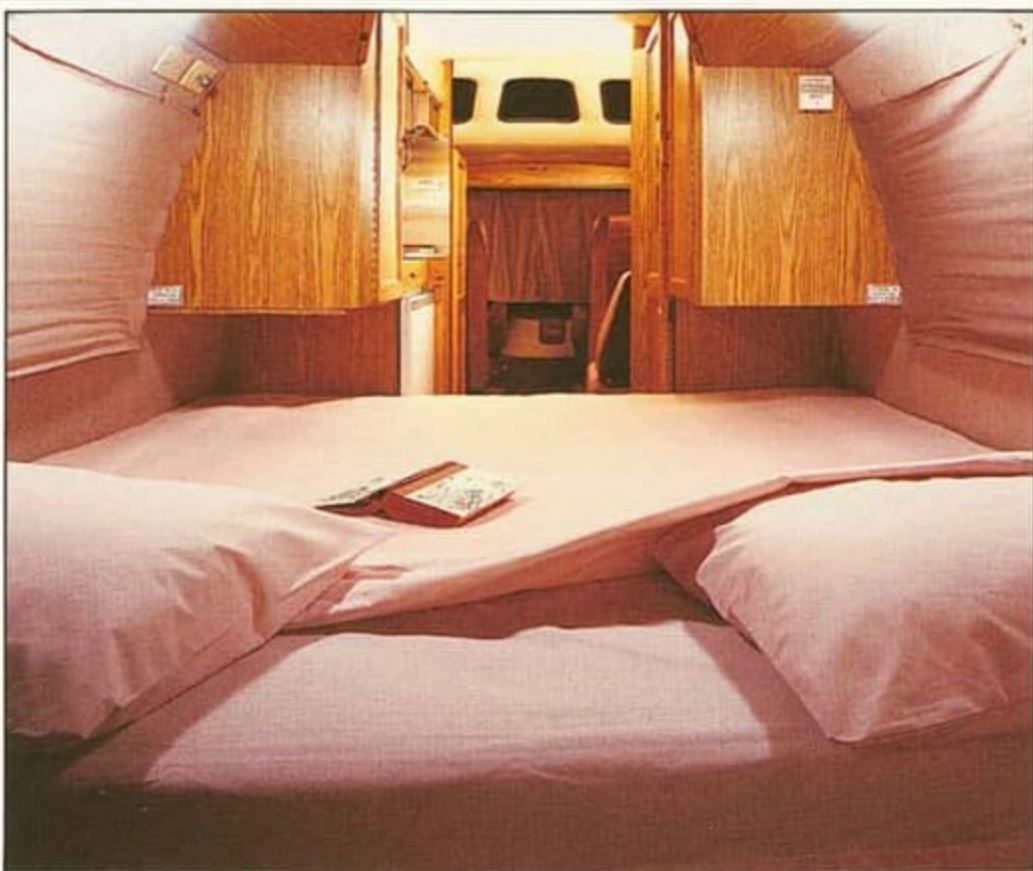
8. Roadtrek Versatile and Independent are equipped with a comfortable 6'1" x 52" double bed that converts to a spacious dinette.



9. Roadtrek Popular offers twin beds (6'3" x 30" and 6'1" x 30") for those who demand separate sleeping arrangements.



10. For those who require more lengthy or roomy sleeping quarters, Roadtrek Popular can also be converted to a 6'3" (max.) x 6'1" king-size bed.

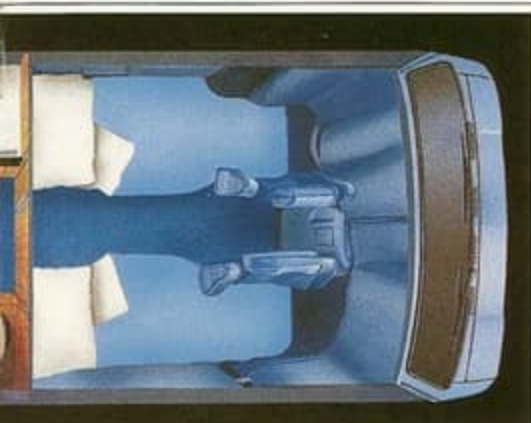
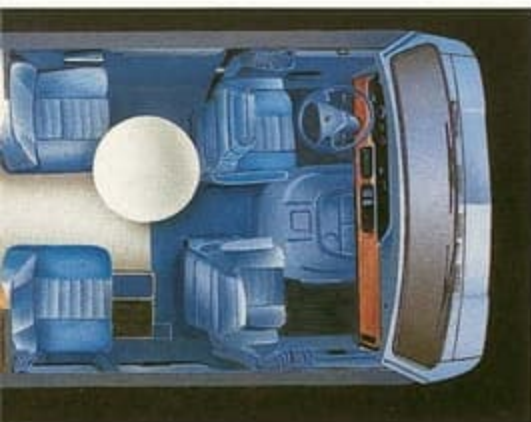


Independent can sleep four in the two single beds at the front and the double bed at the rear (8). If separate sleeping arrangements are desired, the **Roadtrek Popular** provides very comfortable twin beds (9). For those who require more lengthy or roomy sleeping accommodations, the **Roadtrek Popular** can also be converted to a king-size bed that is open at the foot end to stretch out your toes! (10)

And if there are only two of you, equip your **Roadtrek Versatile** or **Independent** with our patented cloverleaf dining table (7). With this second spacious eating area at the front, you can leave the dinette made up as a bed most of the time. That way there is no need to make up the bed every night before you retire or set up the dinette every morning after you rise. Now compare that with anything else on the market!

Access to the bathroom at night is made convenient by its central location; no climbing over several

PRIVACY AREA



11. and 12. (Centre) Three section layout provides many advantages over traditional camper van designs: comfortable and proximate seating for four while driving, private sleeping sections at bed level for up to four, complete mobility when beds are set up, possible separate eating and sleeping sections for two, choice of two eating areas, centrally located bathroom and large privacy area.

13. Combination shower and wardrobe (Independent models) provides complete bathing facilities while maintaining the normal space for hanging clothes.

of your companions to reach the bathroom (12).

Roadtrek's Patented Bathroom/Privacy Area Is Remarkable.

Instead of forcing you into a small, permanent bathroom as is in even the larger motor homes, **Home & Park** has created a spacious "temporary bathroom". When not needed, the bathroom (marine type toilet) is within the closet and out of the way (11).

To use the bathroom simply open the two folding closet doors and a spacious, private area is created (12). The closet doors also provide separate sleeping sections at night. It's so simple, it's incredible that no one had thought of it before.

The shower is equally amazing (13). It doubles as a wardrobe. Just swing the rack while the clothes remain on

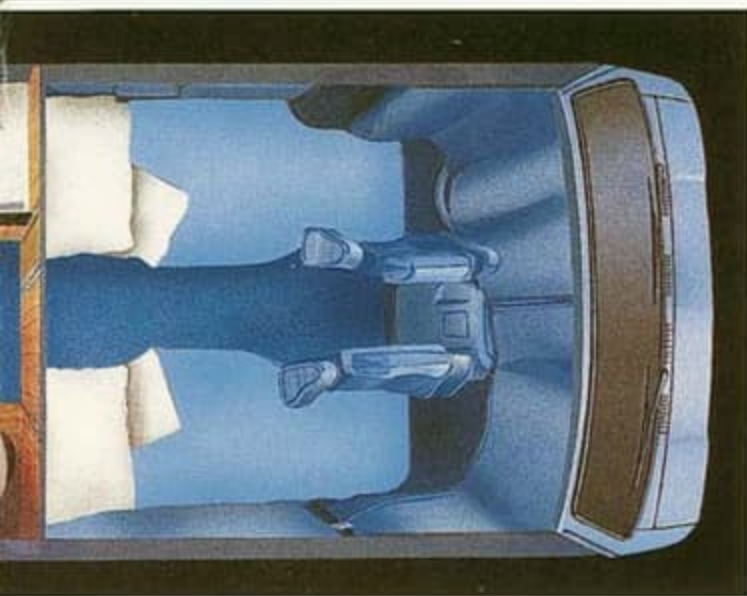
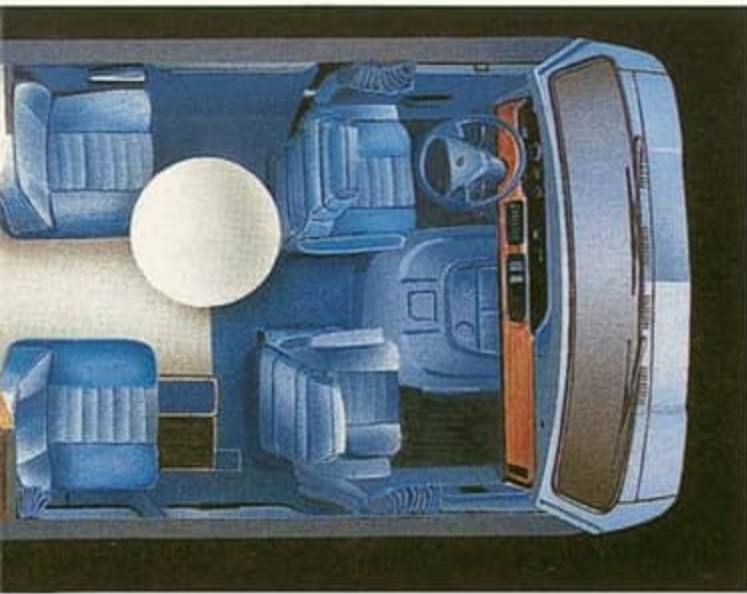


14. Additional storage space is supplied within our unique storage trunk (optional) located beneath the floor at the rear of the unit.



15. Water tanks are custom made to maximize capacity in a given space. All tanks are located below the floor and between the axles for more interior storage and better weight distribution and handling.

PRIVACY AREA



11. and 12. (Centre) Three section layout provides many advantages over traditional camper van designs: comfortable and proximate seating for four while driving, private sleeping sections at bed level for up to four, complete mobility when beds are set up, possible separate eating and sleeping sections for two, choice of two eating areas, centrally located bathroom and large privacy area.

13. Combination shower and wardrobe (Independent models) provides complete bathing facilities while maintaining the normal space for hanging clothes.

of your companions to reach the bathroom (12).

Roadtrek's Patented Bathroom/Privacy Area Is Remarkable.

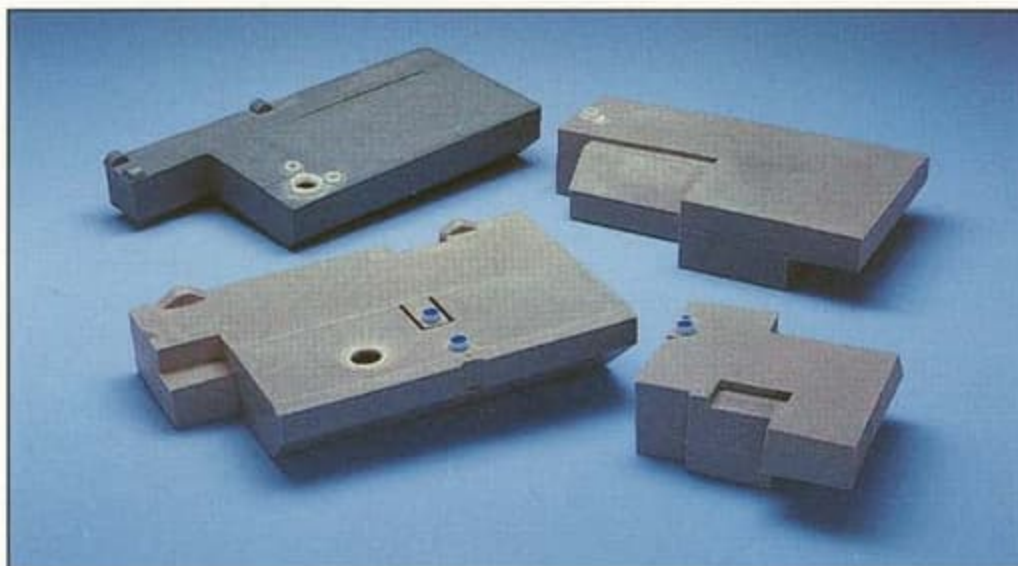
Instead of forcing you into a small, permanent bathroom as is in even the larger motor homes, **Home & Park** has created a spacious "temporary bathroom". When not needed, the bathroom (marine type toilet) is within the closet and out of the way (11).

To use the bathroom simply open the two folding closet doors and a spacious, private area is created (12). The closet doors also provide separate sleeping sections at night. It's so simple, it's incredible that no one had thought of it before.

The shower is equally amazing (13). It doubles as a wardrobe. Just swing the rack while the clothes remain on



14. Additional storage space is supplied within our unique storage trunk (optional) located beneath the floor at the rear of the unit.



15. Water tanks are custom made to maximize capacity in a given space. All tanks are located below the floor and between the axles for more interior storage and better weight distribution and handling.

GALLEY



16. Fully equipped galley that features a 'Dometic' 3.0 cu. ft. 3-way refrigerator, variable intensity microwave oven, LP gas stove, exhaust fan, sink, monitor panel and LP gas

detector is provided in each Roadtrek Versatile or Independent. Spacious eating and entertaining area for four is provided by the rear dinette.

17. Roadtrek Popular's galley is fully equipped with a 'Dometic' 3.0 cu. ft. 3-way refrigerator, variable intensity microwave oven, LP gas stove, exhaust fan, sink, monitor panel and LP gas detector.

Additional storage is provided in the full length wardrobe and the pantry and cupboard over the foot ends of the twin beds. The rear dinette offers a roomy eating and entertaining area for four.

the hangers out over the bed, fold down the tub cover and draw the curtain. It really must be seen to be believed!

"...satisfaction in the ownership of a ROADTREK van which has been so finely designed and constructed that it is almost impossible to find a flaw. I have been a professional designer most of my life... ROADTREK is a luxurious experience, modest in price and lives up to the factory's claim, 'A van that think's it's a motor home.'"

*Russell E. Day
Lacey, Washington*

And when it comes to storage space, **Roadtrek** has more than any other low profile camper van in the industry. When equipped with our rear storage trunk (14) and over cab storage drawer, the **Versatile** has over 65 cubic feet of useable storage space! To achieve this, all tanks are located below the floor rather than inside the cabinets or below the seats or bed using up precious interior space. And these tanks are custom molded to maximize their capacity within a given space (15). Once again, although more costly, they are a better alternative to off-the-shelf rectangular tanks.

A fully equipped galley including a 'Dometic' 3.0 cu. ft. 3-way refrigerator, variable intensity microwave oven, LP gas stove, exhaust fan, sink and monitor panel is provided in your **Roadtrek** (16 and 17). And it's completely self contained for independent use. Now that's practical!

For further convenience, each **Roadtrek** is equipped with awning windows and a built-in sewage hose system. Awning windows provide more ventilation than sliding windows and, more importantly, can be used in the rain without getting everything inside soaked (6).

And when it's time to empty the waste water tanks, it's not necessary to retrieve a sewage hose from a bumper box, attach it to the tanks, empty them, and then handle, clean

GALLEY



the hangers out over the bed, fold down the tub cover and draw the curtain. It really must be seen to be believed!

"...satisfaction in the ownership of a ROADTREK van which has been so finely designed and constructed that it is almost impossible to find a flaw. I have been a professional designer most of my life. . . ROADTREK is a luxurious experience, modest in price and lives up to the factory's claim, 'A van that think's it's a motor home.'"

*Russell E. Day
Lacey, Washington*

And when it comes to storage space, **Roadtrek** has more than any other low profile camper van in the industry. When equipped with our rear storage trunk (14) and over cab storage drawer, the **Versatile** has over 65 cubic feet of useable storage space! To achieve this, all tanks are located below the floor rather than inside the cabinets or below the seats or bed using up precious interior space. And these tanks are custom molded to maximize their capacity within a given space (15). Once again, although more costly, they are a better alternative to off-the-shelf rectangular tanks.

A fully equipped galley including a 'Dometic' 3.0 cu. ft. 3-way refrigerator, variable intensity microwave oven, LP gas stove, exhaust fan, sink and monitor panel is provided in your **Roadtrek** (16 and 17). And it's completely self contained for independent use. Now that's practical!

For further convenience, each **Roadtrek** is equipped with awning windows and a built-in sewage hose system. Awning windows provide more ventilation than sliding windows and, more importantly, can be used in the rain without getting everything inside soaked (6).

And when it's time to empty the waste water tanks, it's not necessary to retrieve a sewage hose from a bumper box, attach it to the tanks, empty them, and then handle, clean

16. Fully equipped galley that features a 'Dometic' 3.0 cu. ft. 3-way refrigerator, variable intensity microwave oven, LP gas stove, exhaust fan, sink, monitor panel and LP gas

detector is provided in each Roadtrek Versatile or Independent. Spacious eating and entertaining area for four is provided by the rear dinette.

17. Roadtrek Popular's galley is fully equipped with a 'Dometic' 3.0 cu. ft. 3-way refrigerator, variable intensity microwave oven, LP gas stove, exhaust fan, sink, monitor panel and LP gas detector.

Additional storage is provided in the full length wardrobe and the pantry and cupboard over the foot ends of the twin beds. The rear dinette offers a roomy eating and entertaining area for four.

INTANGIBLES

and store the dirty hose. Instead, our patented 'Dura-Drain' Sewage Hose System provides a built-in sewage hose that is permanently attached to the waste tanks and extends to the waste disposal station from its storage tube (18). Now that's convenient!



18. Patented 'Dura-Drain' sewage hose system provides a permanently attached built-in sewage hose that eliminates sewage hose handling and storage inconvenience.

What's An Innovative Design Without Quality?

Nothing. We know that you demand quality. And quality is what you get in a **Home & Park** motor home. As members, all **Home & Park Roadtreks** meet and often exceed rigid R.V.I.A. and C.S.A. recreational vehicle standards.

Not only is there quality in their design, but also in their construction. Each **Roadtrek** is backed by an intensive quality assurance process to ensure craftsmanship and dependability.

"Every dealer visit brought out new surprise features that were overlooked previously, and each one showed the thoughtfulness and quality of the design, as well as the pride and craftsmanship consistent with such thinking. The dealer echoes these sentiments and calls it class... I also call it class, with pride in ownership — Thank you!"

John W. Holland
Wilmington, Delaware

Roadtrek Is Backed By An Extensive Warranty!

Since **Roadtrek** is the "best built" camper van in the industry, it should also be the "best backed". So each new **Roadtrek** is backed by a 2 Year or 24,000 mile/40,000 Km Motor Home Warranty!

"(We selected a Home & Park because of their) quality and reputation for honoring warranty."

Ellis Hill
Ames, Iowa



19. Many unique design features are protected by sixteen hard earned United States and Canadian patents. Additional patents are pending.

Why Settle For A Copy When You Can Have The Original?

Because of its effective design and layout, **Roadtrek** has attracted many copies. However due to constant improvement and innovation, **Home & Park** is always one step ahead of its copying competitors. And being the originator of many of the unique features found in **Roadtrek, Home & Park** has been granted numerous United States and Canadian patents (19). After all, why be satisfied with a van that pretends it's a **Roadtrek** when you can have one that is?

"It was the best motor home type van of the ones that we looked at — and we looked at all your major competition's products!"

Melvin H. Nuechterlein
Basking Ridge, New Jersey

"... the best RV conversion van available — and we did check a lot of them."

Anna-Maria Schulz
Tacoma, Washington

"We looked at many models of other manufacturers and compared features — Roadtrek was by far the most innovative — you've done your homework!"

Mr. & Mrs. James A. Abbott
Munster, Indiana

Satisfaction Among Roadtrek Owners Is Fantastic!

In a survey of **Roadtrek** owners, of those that were planning to buy another RV, 94% of American respondents and 91% of Canadian respondents were going to buy another **Roadtrek**! In fact, many are on their second, third or fourth unit. One couple is even on their seventh! How many other manufacturers can boast such a high level of customer satisfaction?

"This is our third Roadtrek and we love it!"

Shirley Blume
Blairmore, Alberta

"J'en avais un 1986 et je l'ai bien aimé."

Rita Landry
Montréal-Nord, Québec

INTANGIBLES

and store the dirty hose. Instead, our patented 'Dura-Drain' Sewage Hose System provides a built-in sewage hose that is permanently attached to the waste tanks and extends to the waste disposal station from its storage tube (18). Now that's convenient!



18. Patented 'Dura-Drain' sewage hose system provides a permanently attached built-in sewage hose that eliminates sewage hose handling and storage inconvenience.

What's An Innovative Design Without Quality?

Nothing. We know that you demand quality. And quality is what you get in a **Home & Park** motor home. As members, all **Home & Park Roadtreks** meet and often exceed rigid R.V.I.A. and C.S.A. recreational vehicle standards.

Not only is there quality in their design, but also in their construction. Each **Roadtrek** is backed by an intensive quality assurance process to ensure craftsmanship and dependability.

"Every dealer visit brought out new surprise features that were overlooked previously, and each one showed the thoughtfulness and quality of the design, as well as the pride and craftsmanship consistent with such thinking. The dealer echoes these sentiments and calls it class... I also call it class, with pride in ownership — Thank you!"

John W. Holland
Wilmington, Delaware



19. Many unique design features are protected by sixteen hard earned United States and Canadian patents. Additional patents are pending.

Why Settle For A Copy When You Can Have The Original?

Because of its effective design and layout, **Roadtrek** has attracted many copies. However due to constant improvement and innovation, **Home & Park** is always one step ahead of its copying competitors. And being the originator of many of the unique features found in **Roadtrek**, **Home & Park** has been granted numerous United States and Canadian patents (19). After all, why be satisfied with a van that pretends it's a **Roadtrek** when you can have one that is?

"It was the best motor home type van of the ones that we looked at — and we looked at all your major competition's products!"

Melvin H. Nuechterlein
Basking Ridge, New Jersey

"...the best RV conversion van available — and we did check a lot of them."

Anna-Maria Schulz
Tacoma, Washington

"We looked at many models of other manufacturers and compared features — Roadtrek was by far the most innovative — you've done your homework!"

Mr. & Mrs. James A. Abbott
Munster, Indiana

Satisfaction Among Roadtrek Owners Is Fantastic!

In a survey of **Roadtrek** owners, of those that were planning to buy another RV, 94% of American respondents and 91% of Canadian respondents were going to buy another **Roadtrek**! In fact, many are on their second, third or fourth unit. One couple is even on their seventh! How many other manufacturers can boast such a high level of customer satisfaction?

"This is our third Roadtrek and we love it!"

Shirley Blume
Blairmore, Alberta

"J'en avais un 1986 et je l'ai bien aimé."

Rita Landry
Montréal-Nord, Québec

Roadtrek Is Backed By An Extensive Warranty!

Since **Roadtrek** is the "best built" camper van in the industry, it should also be the "best backed". So each new **Roadtrek** is backed by a 2 Year or 24,000 mile/40,000 Km Motor Home Warranty!

"(We selected a Home & Park because of their) quality and reputation for honoring warranty."

Ellis Hill
Ames, Iowa

INDEPENDENT: For those who want absolutely everything in a motor home van.

Two captain's seats, two lounge seats & cloverleaf dining table (optional) convert to two single beds (same as Versatile), standard galley with shower package and 150L/39 US gal. (Dodge chassis) or 114L/30 US gal. (Chevy chassis) fresh water capacity, and dinette that converts to large double bed (same as Versatile).

VERSATILE: The "Original" and still our best selling floor plan.

Two single beds convert to two captain's seats, two lounge seats (same as Independent) & round dining table, standard galley, and large double bed that converts to dinette (same as Independent).

POPULAR: For those who need twin beds, king-size bed or maximum storage in a motor home van.

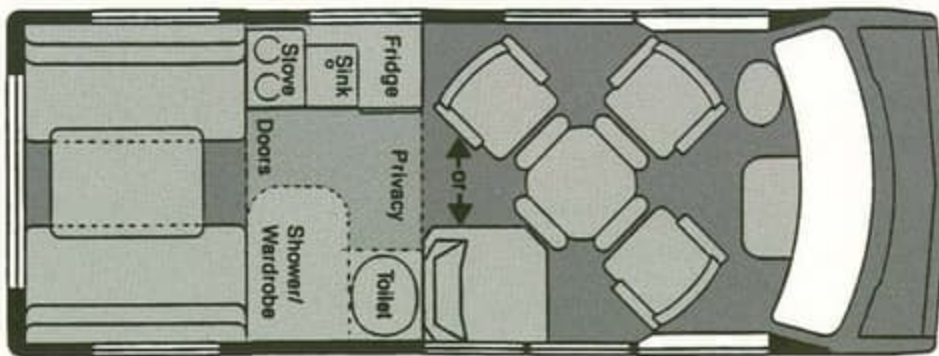
Two captain's seats, one lounge seat & "egg" shaped cocktail table convert to one single bed, full length wardrobe, standard galley, and dinette that converts to twin beds or king-size bed. (See upper floor plan for daytime living arrangements and lower for sleeping.)

GREEN NOTICE:

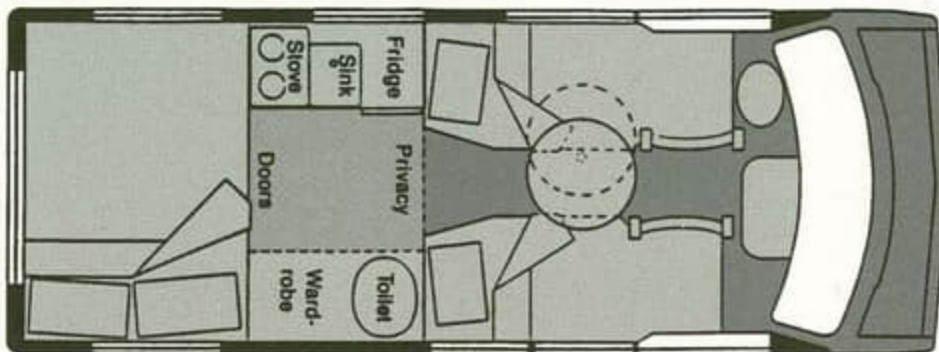


At Home & Park, we share your concern for the environment. Just as you may be doing in your own home, we are supporting the three "R's" of "Reducing, Re-using & Recycling" waste. For example, along with the majority of our office stationery, this brochure is produced using recycled paper — part of our contribution to a cleaner world.

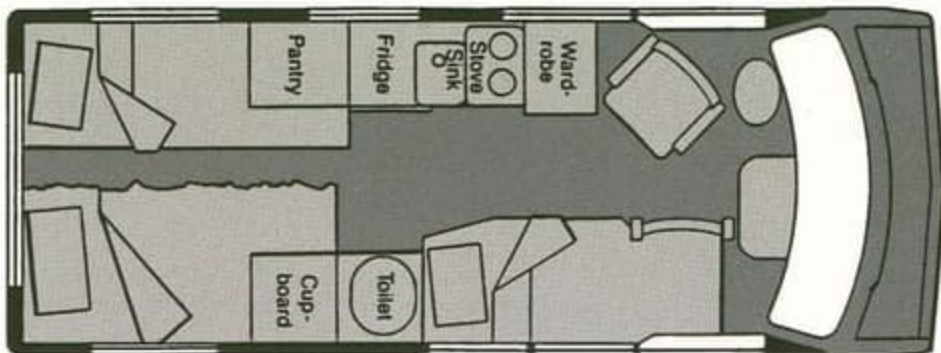
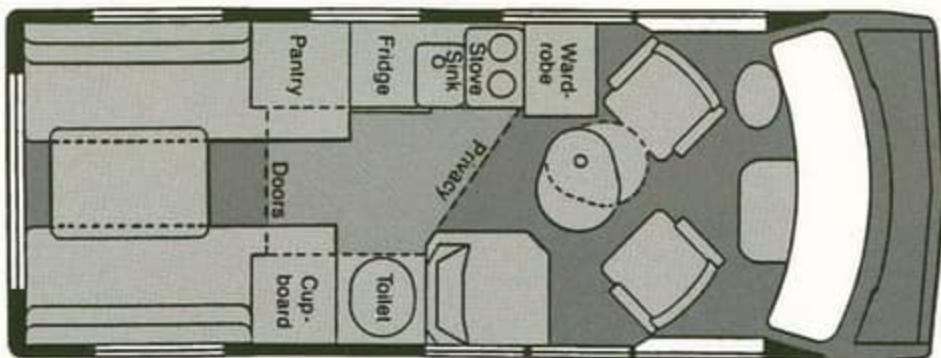
Independent



Versatile



Popular



INDEPENDENT: For those who want absolutely everything in a motor home van.

Two captain's seats, two lounge seats & cloverleaf dining table (optional) convert to two single beds (same as Versatile), standard galley with shower package and 150L/39 US gal. (Dodge chassis) or 114L/30 US gal. (Chevy chassis) fresh water capacity, and dinette that converts to large double bed (same as Versatile).

VERSATILE: The "Original" and still our best selling floor plan.

Two single beds convert to two captain's seats, two lounge seats (same as Independent) & round dining table, standard galley, and large double bed that converts to dinette (same as Independent).

POPULAR: For those who need twin beds, king-size bed or maximum storage in a motor home van.

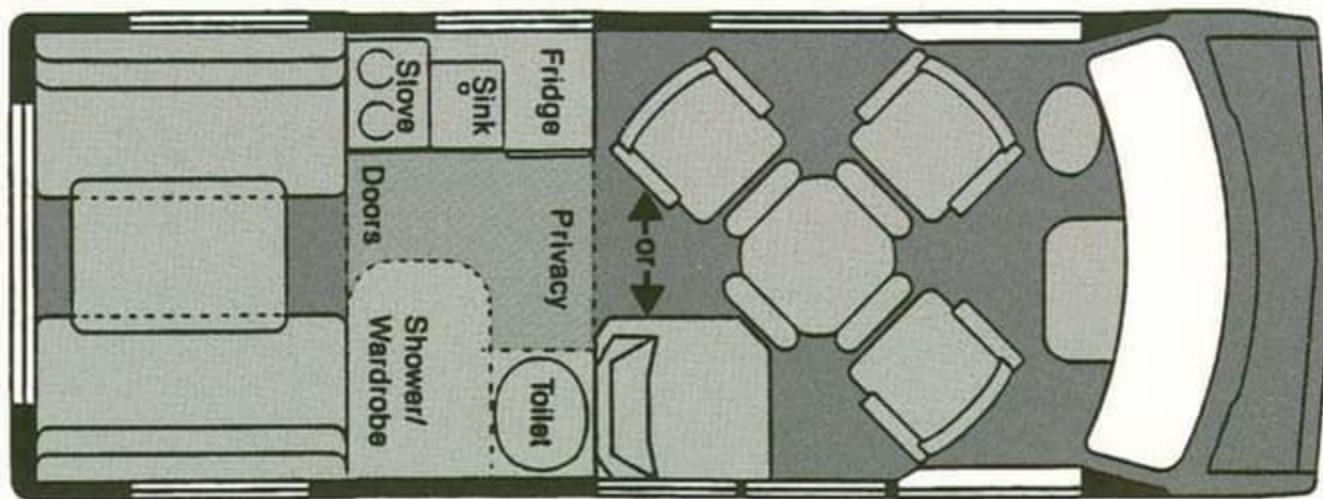
Two captain's seats, one lounge seat & "egg" shaped cocktail table convert to one single bed, full length wardrobe, standard galley, and dinette that converts to twin beds or king-size bed. (See upper floor plan for daytime living arrangements and lower for sleeping.)



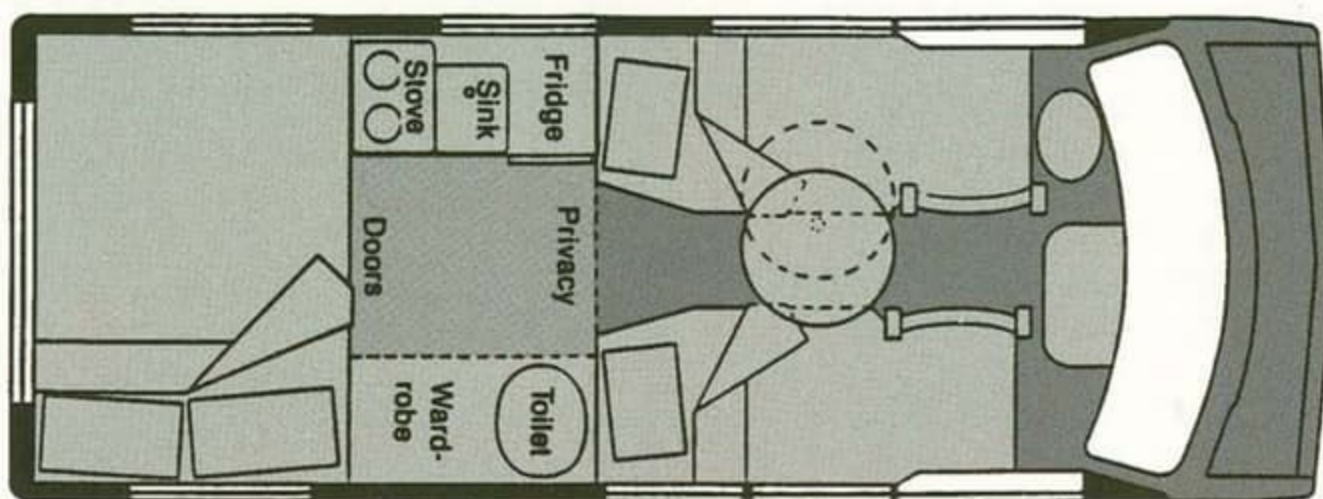
GREEN NOTICE:

At Home & Park, we share your concern for the environment. Just as you may be doing in your own home, we are supporting the three "R's" of "Reducing, Re-using & Recycling" waste. For example, along with the majority of our office stationery, this brochure is produced using recycled paper — part of our contribution to a cleaner world.

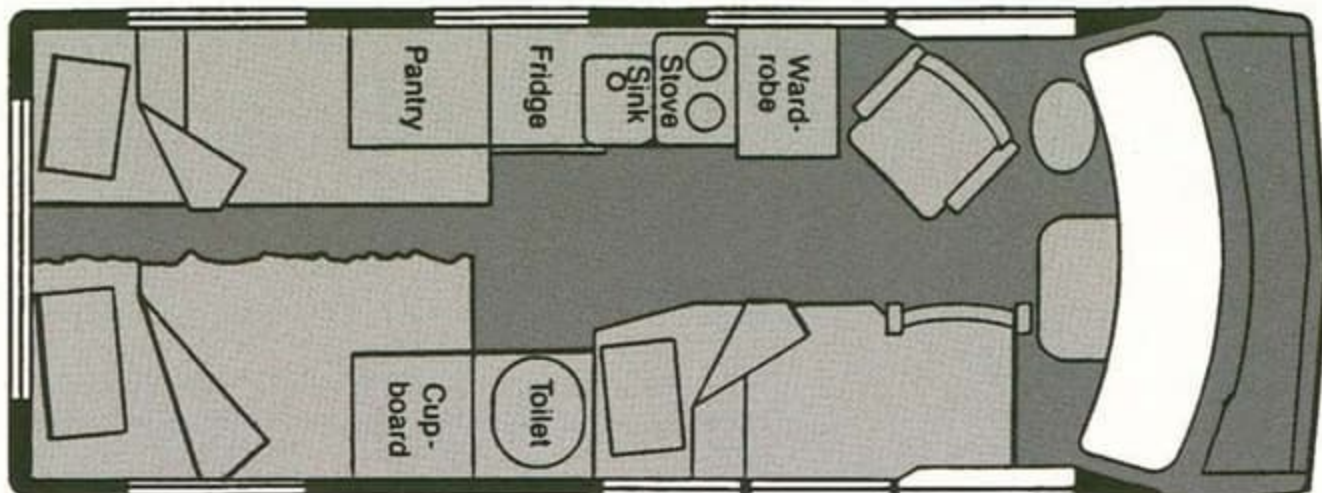
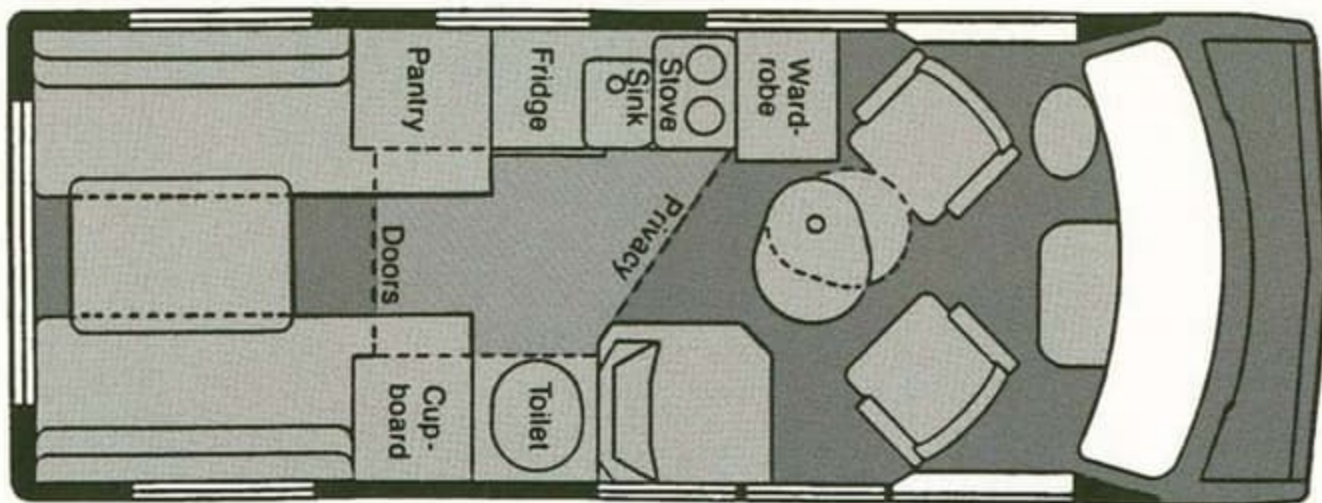
Independent



Versatile



Popular



SPECIFICATIONS

STANDARD MOTOR HOME FEATURES	STANDARD AUTOMOTIVE FEATURES	
Battery - auxiliary deep cycle & isolator	DODGE B250 MAXIVAN	CHEVROLET G30 EXTENDED VAN
Connections - 110V & city water	air conditioning	automotive
Converter/charger - 110/12V (31 amp.)	Alternator	120 amp.
Detector - LP gas	Axle - rear	3.90 ratio
Exhaust fan - 12V hooded	Battery	750 amp. maintenance free
Furnace - LP gas automatic (16000 BTU)	Brakes	power with rear anti-lock system
Lights - 12V florescent (2)	Cruise control	electronic
Microwave oven - 110V variable intensity (0.4 cu. ft.)	Door locks	power - all doors
Monitor panel - water & battery levels	Doors	double right side & rear single
Privacy area with bifold doors - patented	Engine	5.2 L/318 CID EFI V8
Refrigerator - 12V/110V/LP gas 'Dometic' (3.0 cu. ft.)	Fuel tank capacity	132 L/35 US gal.
Refrigerator venting - patented integrated	Head lamps	halogen
Sewage hose system - patented 'Dura-Drain' system	Mirrors	power - 9" x 6" bright
Stove - LP gas two burner	Power - net	127 KW/170 HP @ 4000 RPM
Tank - LP gas (40 L/10 US gal./42 lbs.)	Radio	AM/FM cassette with clock & four speakers
Toilet - marine	Shock absorbers	heavy duty front & rear
TV antenna - 'Hide-A-Tenna'	Springs - front	1352 Kg/2980 lbs. capacity
TV shelf - pivoting	Springs - rear	2422 Kg/5340 lbs. capacity
Water system - 12V demand	Stabilizer bar	front
Water tank - fresh - 50 L/13 US gal. (110 L/30 US gal. with Chevrolet chassis)	Steering column	tilt
Water tank - grey - 50 L/13 US gal. (80 L/22 US gal. with Chevrolet chassis)	Tire - spare	matching
Water tank - black - 80 L/21 US gal. (60 L/15 US gal. with Chevrolet chassis)	Tires	P235/75R15XL all season radials
Windows - awning	Torque - net	356 N-m/262 ft. lbs. @ 2400 RPM
	Towing capacity	4670 Kg/10500 lbs. GCWR
	Towing capacity (estimated)	2300 Kg/5000 lbs. tow weight
	Towing capacity	363 Kg/800 lbs. tongue weight
	Transmission	automatic - 4 speed overdrive
	Window operation	power - front doors only
	Window tint	tinted - all
	Windshield wipers	2 speed with intermittent wipe
		2 speed with intermittent wipe
MOTOR HOME OPTIONS	EXTERIOR DIMENSIONS	
Air conditioner - 110V built-in (7500 BTU)	Length - overall	5720 mm/18' 9"
Awning - 'A&E' box	Height - overall	2440 mm/8' 0"
Captain's seats - four or three (replaces std. lounge seats)	Width - overall	2030 mm/6' 8"
Dining table - cloverleaf	Wheelbase	3230 mm/127"
Generator - 'Onan MicroLite' remote-start (2.8 KW)	Base weight	2400 Kg/5300 lbs.
Generator preparation package - 'Onan MicroLite'	Gross vehicle weight rating (GVWR)	2903 Kg/6400 lbs.
Roof vent - 12V power		3900 Kg/8600 lbs.
Screen package for all van door windows & side cargo door opening	INTERIOR DIMENSIONS	
Storage drawer - over cab (n/a with Popular)	Standing height	1830 mm/72"
Storage trunk - rear (1520 mm x 690 mm x 300 mm/60" x 27" x 12", Dodge only)	Rear double bed length	1860 mm/73"
Wardrobe - removable (replaces left std. lounge seat)	Rear double bed width	1320 mm/52"
Water heater - LP gas automatic (23 L/6 US gal., 9500 BTU)	Single bed length	1780 mm/70" (left side)
Water tank - fresh (100L/26 US gal., replaces std. tank, Dodge only)		1680 mm/66" (right side)
	Single bed width	660 mm/26" (maximum)
	King-size bed length	1900 mm/75" (left side)
		1860 mm/73" (right side)
	King-size bed width	1860 mm/73"
	Twin bed length	1900 mm/75" (left side)
		1850 mm/73" (right side)
	Twin bed width	760 mm/30" (after extension)
		760 mm/30" (after extension)
AUTOMOTIVE OPTIONS	WARRANTIES	
Emission reduction - California	All units are covered by three limited warranties:	
Engine - 5.9 L/360 CID EFI V8 (Dodge)	Automotive warranty	7 year/115,000 Km/70,000 mile
Engine - 7.4 L/454 CID EFI V8 (Chevy)		3 year/80,000/50,000 mile limited
Paint treatment - deluxe		"bumper to bumper plus" as
Running boards - aluminum		offered by Chrysler
Running boards - flareless fiberglass	Motor home warranty	2 year/40,000 Km/24,000 mile limited warranty offered by Home & Park Motorhomes covering the manufacture of the motor home.
Rust protection - 'Ziebart'	Appliance warranty	The warranties on the individual appliances offered by their respective manufacturers.
Spare tire kit - continental		
Wheels - aluminum modular		

S P E C I F I C A T I O N S

STANDARD MOTOR HOME FEATURES	STANDARD AUTOMOTIVE FEATURES	
	DODGE B250 MAXIVAN	CHEVROLET G30 EXTENDED VAN
Battery - auxiliary deep cycle & isolator	Air conditioning automotive	automotive
Connections - 110V & city water	Alternator 120 amp.	100 amp.
Converter/charger - 110/12V (31 amp.)	Axle - rear 3.90 ratio	3.73 ratio
Detector - LP gas	Battery 750 amp. maintenance free	630 amp. maintenance free
Exhaust fan - 12V hooded	Brakes power with rear anti-lock system	power with rear anti-lock system
Furnace - LP gas automatic (16000 BTU)	Cruise control electronic	electronic
Lights - 12V florescent (2)	Door locks power - all doors	power - all doors
Microwave oven - 110V variable intensity (0.4 cu. ft.)	Doors double right side & rear single	dbl. 60%/40% right side & dbl. rear
Monitor panel - water & battery levels	Engine 5.2 L/318 CID EFI V8	5.7 L/350 CID EFI V8
Privacy area with bifold doors - patented	Fuel tank capacity 132 L/35 US gal.	125 L/33 US gal.
Refrigerator - 12V/110V/LP gas 'Dometic' (3.0 cu. ft.)	Head lamps halogen	halogen
Refrigerator venting - patented integrated	Mirrors power - 9" x 6" bright	9" x 6.5" stainless steel
Sewage hose system - patented 'Dura-Drain' system	Power - net 127 KW/170 HP @ 4000 RPM	142 KW/190 HP @ 4000 RPM
Stove - LP gas two burner	Radio AM/FM cassette with clock & four speakers	AM/FM cassette with clock, seek-scan & four speakers
Tank - LP gas (40 L/10 US gal./42 lbs.)	Shock absorbers heavy duty front & rear	heavy duty front & rear
Toilet - marine	Springs - front 1352 Kg/2980 lbs. capacity	1770 Kg/3900 lbs. capacity
TV antenna - 'Hide-A-Tenna'	Springs - rear 2422 Kg/5340 lbs. capacity	2432 Kg/5360 lbs. capacity
TV shelf - pivoting	Stabilizer bar front	front
Water system - 12V demand	Steering column tilt	tilt
Water tank - fresh - 50 L/13 US gal. (110 L/30 US gal. with Chevrolet chassis)	Tire - spare matching	matching
Water tank - grey - 50 L/13 US gal. (80 L/22 US gal. with Chevrolet chassis)	Tires P235/75R15XL all season radials	LT225/75R16E all season radials
Water tank - black - 80 L/21 US gal. (60 L/15 US gal. with Chevrolet chassis)	Torque - net 356 N-m/262 ft. lbs. @ 2400 RPM	404 N-m/300 ft. lbs. @ 2400 RPM
Windows - awning	Towing capacity 4670 Kg/10500 lbs. GCWR	5440 Kg/12000 lbs. GCWR
	Towing capacity (estimated) 2300 Kg/5000 lbs. tow weight	2700 Kg/6000 lbs. tow weight
	Towing capacity 363 Kg/800 lbs. tongue weight	454 Kg/1000 lbs. tongue weight
	Transmission automatic - 4 speed overdrive	automatic - 4 speed overdrive
	Window operation power - front doors only	power - front doors only
	Window tint tinted - all	tinted - all
	Windshield wipers 2 speed with intermittent wipe	2 speed with intermittent wipe
MOTOR HOME OPTIONS	EXTERIOR DIMENSIONS	
Air conditioner - 110V built-in (7500 BTU)	Length - overall 5720 mm/18' 9"	5940 mm/19' 6" (with Continental Kit)
Awning - 'A&E' box	Height - overall 2440 mm/8' 0"	2530 mm/8' 4"
Captain's seats - four or three (replaces std. lounge seats)	Width - overall 2030 mm/6' 8"	2030 mm/6' 8"
Dining table - cloverleaf	Wheelbase 3230 mm/127"	3710 mm/146"
Generator - 'Onan MicroLite' remote-start (2.8 KW)	Base weight 2400 Kg/5300 lbs.	2770 Kg/6100 lbs.
Generator preparation package - 'Onan MicroLite'	Gross vehicle weight rating (GVWR) 2903 Kg/6400 lbs.	3900 Kg/8600 lbs.
Roof vent - 12V power	INTERIOR DIMENSIONS	
Screen package for all van door windows & side cargo door opening	Standing height 1830 mm/72"	1860 mm/73"
Storage drawer - over cab (n/a with Popular)	Rear double bed length 1860 mm/73"	1860 mm/73"
Storage trunk - rear (1520 mm x 690 mm x 300 mm/60" x 27" x 12", Dodge only)	Rear double bed width 1320 mm/52"	1320 mm/52"
Wardrobe - removable (replaces left std. lounge seat)	Single bed length 1780 mm/70" (left side)	1780 mm/70" (left side)
Water heater - LP gas automatic (23 L/6 US gal., 9500 BTU)	1680 mm/66" (right side)	1680 mm/66" (right side)
Water tank - fresh (100L/26 US gal., replaces std. tank, Dodge only)	Single bed width 660 mm/26" (maximum)	660 mm/26" (maximum)
	King-size bed length 1900 mm/75" (left side)	1900 mm/75" (left side)
	1860 mm/73" (right side)	1860 mm/73" (right side)
	King-size bed width 1860 mm/73"	1860 mm/73"
	Twin bed length 1900 mm/75" (left side)	1900 mm/75" (left side)
	1850 mm/73" (right side)	1850 mm/73" (right side)
	Twin bed width 760 mm/30" (after extension)	760 mm/30" (after extension)
AUTOMOTIVE OPTIONS	WARRANTIES	
Emission reduction - California	All units are covered by three limited warranties:	
Engine - 5.9 L/360 CID EFI V8 (Dodge)	Automotive warranty 7 year/115,000 Km/70,000 mile limited "power train & anti-corrosion" as offered by Chrysler Motors or Chrysler Canada Ltd.	3 year/80,000/50,000 mile limited "bumper to bumper plus" as offered by General Motors Corp. or General Motors of Canada Ltd.
Engine - 7.4 L/454 CID EFI V8 (Chevy)	Motor home warranty 2 year/40,000 Km/24,000 mile limited warranty offered by Home & Park Motorhomes covering the manufacture of the motor home.	
Paint treatment - deluxe	Appliance warranty The warranties on the individual appliances offered by their respective manufacturers.	
Running boards - aluminum		
Running boards - flareless fiberglass		
Rust protection - 'Ziebart'		
Spare tire kit - continental		
Wheels - aluminum modular		



WHAT OUR CUSTOMERS ARE SAYING ABOUT ROADTREKS...

"It has 10 pounds of gear in a 6 pound bag."

*R. E. Shaffer
Ocala, Florida*

"Saw one (Roadtrek) in parking lot. Wrote for information. Called and learned much from Kitchener office janitor. Talked to long-time Roadtrek owners in state park and others in restaurant. Decided such owner and employee loyalty must — we hope — mean a quality product."

*M. Murphy & I. Weiss
St. Augustine, Florida*

"It was the best van that we saw after a long search."

*Jerome R. & Joyce A. Clarke
Grand Junction, Colorado*

"(We selected a Home & Park) because it met our layout requirements. And you sent us honest replies, rather than self serving replies, to our questions."

*Charles Chadbourn
Bloomington, Montana*

"...We decided 3 - 4 years ago on Roadtrek. This is our 7th RV...It's a great RV — LOVE IT!"

*Charles E. Faye Davis
Phoenix, Arizona*

RECREATIONAL VEHICLE COMPLIANCES

U.S.: All units are R.V.I.A. approved and may exceed individual state requirements.

CANADA: All units are C.S.A. certified and may exceed required installation standards on many items.

IMPORTANT... PLEASE READ

Some units pictured with optional equipment. Certain options may require deletions of standard items or additions of other optional items in order to function properly. Restrictions or limitations may apply to certain options and/or chassis combinations. See your dealer for details. Additional information may be supplied by Home & Park Motorhomes.

Specifications and design are subject to change without notice or obligation whatsoever. Home & Park Motorhomes shall not be held responsible for errors or omissions contained herein or the delivery or non-delivery of any item herein.

The drawings, photographs, literature and technical information contained herein are the exclusive property of Hanmar Motor Corporation. The above may not be duplicated, reproduced, used nor conveyed to others without our express written consent.

Original and exclusive exterior and interior design and contents may not be duplicated. Same protected by U.S. Patent numbers Des. 276955, 4133347, 4550946, 4620741, 4685719, 4699207; Canadian Industrial Design numbers 47781, 50414; and Canadian Patent numbers 1200262, 1205103, 1207818, 1212398, 1232205, 1260043, 1260988, 1269802; other patents pending.

™ "Home & Park", "Roadtrek", and "The Van That Think's It's A Motor Home" are registered trademarks of J.J. Hanemaayer and/or J.N. Hanemaayer of which Hanmar Motor Corporation is a licensee and/or registered user.

Home & Park™
Motorhomes

A division of
HANMAR MOTOR CORPORATION
75 Ardel Place
Kitchener, Ontario N2C 2C8
TEL: (519) 745-1169
FAX: (519) 745-1160

IMPORTANT



WHAT OUR CUSTOMERS ARE SAYING ABOUT ROADTREKS...

"It has 10 pounds of gear in a 6 pound bag."

*R. E. Shaffer
Ocala, Florida*

"Saw one (Roadtrek) in parking lot. Wrote for information. Called and learned much from Kitchener office janitor. Talked to long-time Roadtrek owners in state park and others in restaurant. Decided such owner and employee loyalty must — we hope — mean a quality product."

*M. Murphy & I. Weiss
St. Augustine, Florida*

"It was the best van that we saw after a long search."

*Jerome R. & Joyce A. Clarke
Grand Junction, Colorado*

"(We selected a Home & Park) because it met our layout requirements. And you sent us honest replies, rather than self serving replies, to our questions."

*Charles Chadbourn
Bloomington, Montana*

"...We decided 3 - 4 years ago on Roadtrek. This is our 7th RV... It's a great RV — LOVE IT!"

*Charles E. Faye Davis
Phoenix, Arizona*

RECREATIONAL VEHICLE COMPLIANCES

U.S.: All units are R.V.I.A. approved and may exceed individual state requirements.

CANADA: All units are C.S.A. certified and may exceed required installation standards on many items.

IMPORTANT... PLEASE READ

Some units pictured with optional equipment. Certain options may require deletions of standard items or additions of other optional items in order to function properly. Restrictions or limitations may apply to certain options and/or chassis combinations. See your dealer for details. Additional information may be supplied by Home & Park Motorhomes.

Specifications and design are subject to change without notice or obligation whatsoever. Home & Park Motorhomes shall not be held responsible for errors or omissions contained herein or the delivery or non-delivery of any item herein.

The drawings, photographs, literature and technical information contained herein are the exclusive property of Hanmar Motor Corporation. The above may not be duplicated, reproduced, used nor conveyed to others without our express written consent.

Original and exclusive exterior and interior design and contents may not be duplicated. Same protected by U.S. Patent numbers Des. 276955, 4133347, 4550946, 4620741, 4685719, 4699207; Canadian Industrial Design numbers 47781, 50414; and Canadian Patent numbers 1200262, 1205103, 1207818, 1212398, 1232205, 1260043, 1260988, 1269802; other patents pending.

™ "Home & Park", "Roadtrek", and "The Van That Think's It's A Motor Home" are registered trademarks of J.J. Hanemaayer and/or J.N. Hanemaayer of which Hanmar Motor Corporation is a licensee and/or registered user.

Home & Park™ Motorhomes

A division of
HANMAR MOTOR CORPORATION
75 Ardelt Place
Kitchener, Ontario N2C 2C8
TEL.: (519) 745-1169
FAX: (519) 745-1160