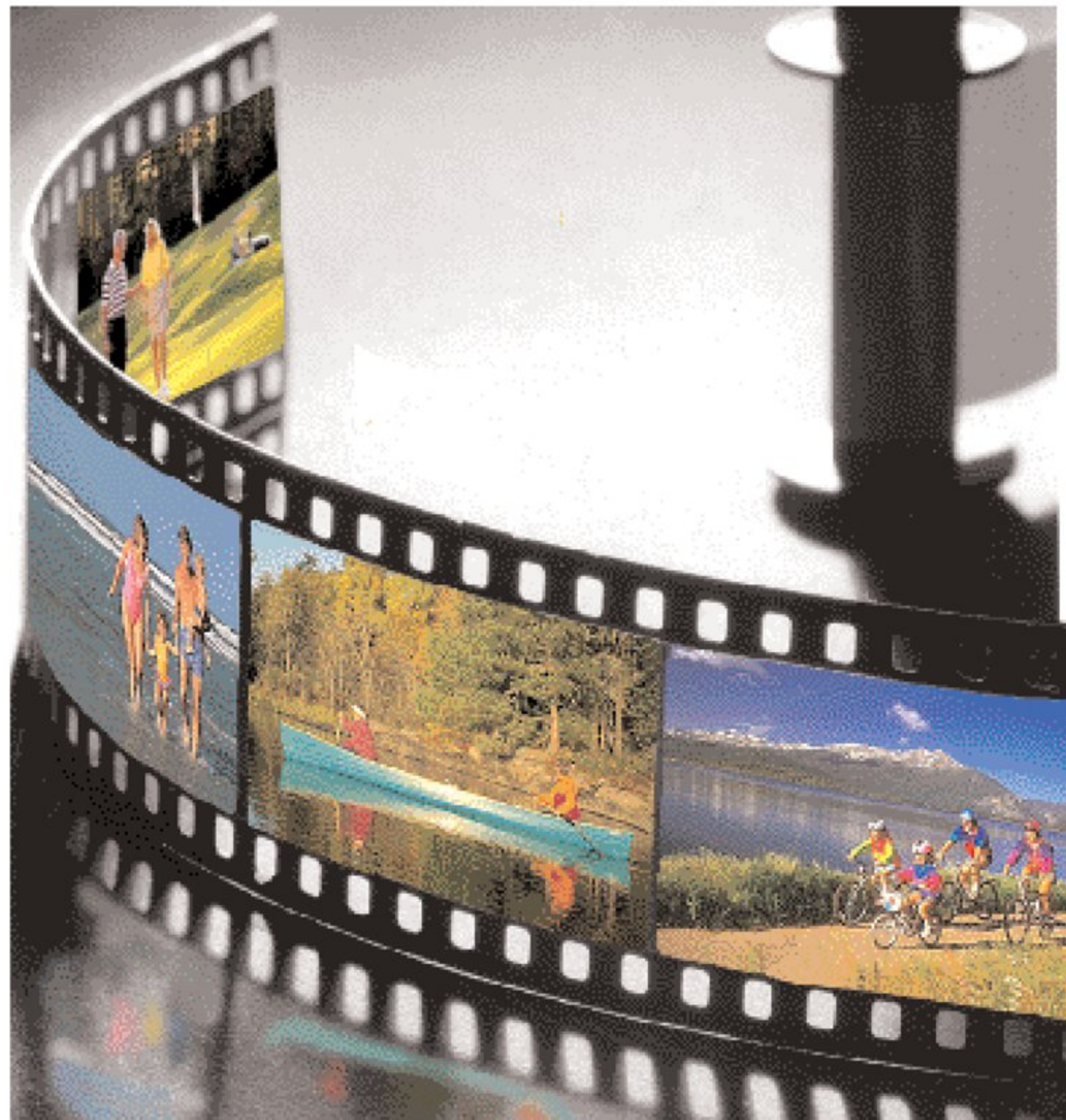




Challenger Bus • By Damon Corporation

# Challenger





## Challenger Bus. A Step Above the Competition.

If you're up to the challenge of questioning preconceived notions about what you can expect from a motorized recreational vehicle at a surprisingly low price, then Damon Corporation invites you to discover the Challenger Bus.

Precisely engineered to deliver optimal road handling, the Challenger embodies impressive quality standards with comforts and conveniences that leave the competition in the dust. And all at a price that will ensure you a good night's sleep, confident that you've invested in a premier product that combines excellent design and layout with stylish looks.

The Challenger Bus is your ticket to outstanding features. With six floor plans to choose from, you'll be guaranteed rich, hardwood-framed cabinet doors, stylish designer fabrics and, in select models, mirrored closets.

The galley has an impressive list of modern appliances, including microwave and three-burner, high-output range, double-door refrigerator and double-bowl porcelain sink. Combined with ample storage space, cooks can take pride in preparing meals that will satisfy even the most discriminating appetite.

### Designed For Enjoyment. Refined To Perfection.

When you choose the Challenger Bus, you can be confident you've chosen a winner. Using the highest standards in engineering and design, Damon follows a path of uncompromising quality, starting with the most reliable chassis on the market. and by forging Old World craftsmanship with state-of-the-art technology, quality

is a given — providing maximum durability and minimum maintenance.

Just one of many examples of this built-in quality are the sidewalls, which are constructed of aluminum-framed laminated fiberglass. This extra-durable material, together with an innovative vacuum-bonding process, forms a smoother, longer-lasting hardwall surface. Not only is greater structural stability and adhesion achieved, but the wall is also lighter than wood and metal and easier to clean and maintain.

Congratulations! Now that you've successfully challenged what you thought was not possible in a motorized recreational home, you owe it to yourself to visit your nearest dealer. The Challenger Bus. We challenge you to find a better value.



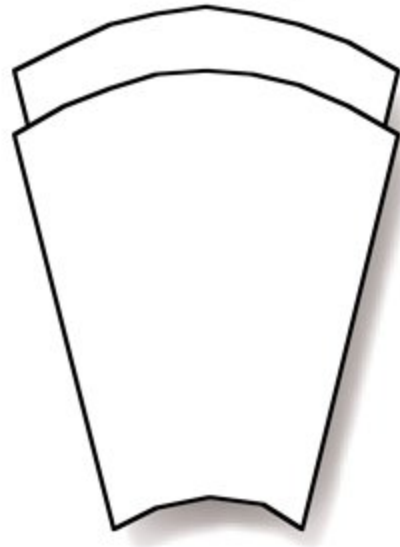




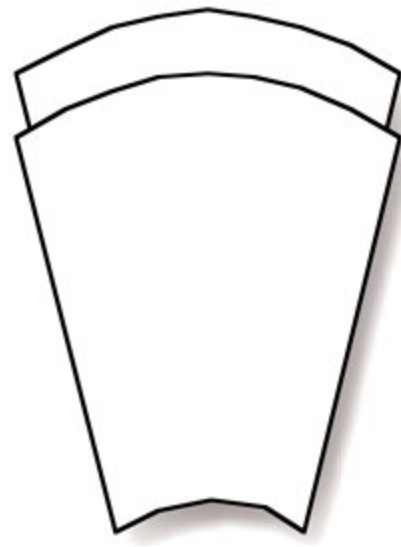
(Top Left) Cook, eat, read, relax – there's room for every activity in the Challenger Bus. Well-equipped kitchen makes eating in fun and easy. (Lower Left) The destination isn't half as enjoyable as the journey when you're traveling in a Challenger Bus. Sleek one-piece molded dashboard and super-plush captain's chair mean the driving is easy. (Above) Your own private hotel always has your room ready in the Challenger Bus. Warm cabinetry and pretty lighting highlight the matching bedspread and window treatments. (Center) An elegant bath completes the picture. The hardwood-framed medicine cabinet with mirror and spacious cabinet under the sink provide convenient, private storage for personal items. (Right) Cruise in style inside and out in the Challenger Bus. Pictured here is model 296 with TidalWave decor. Sturdy, comfortable furniture and plenty of overhead storage lets you pack in the fun.



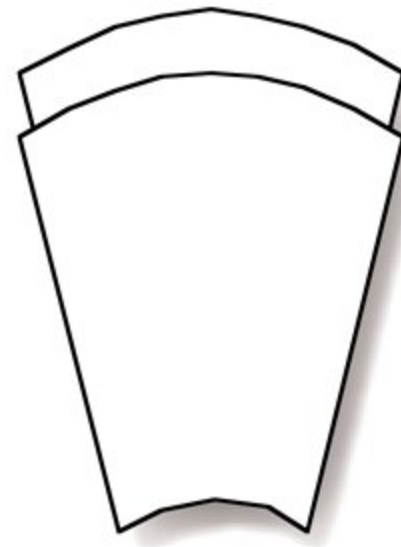
Cocoa Canyon



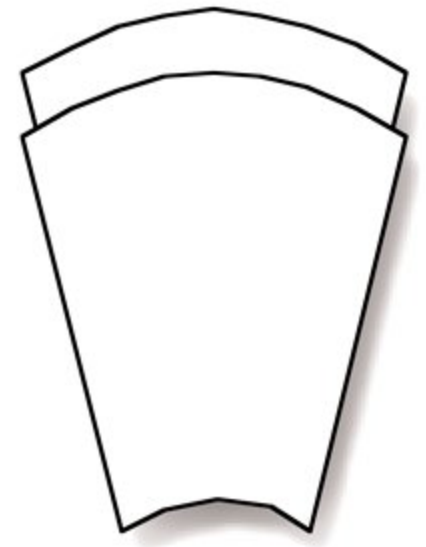
Fantasia

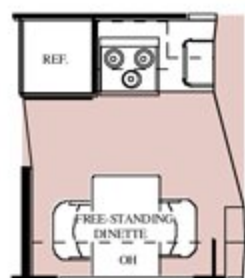
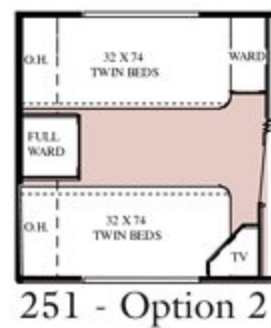
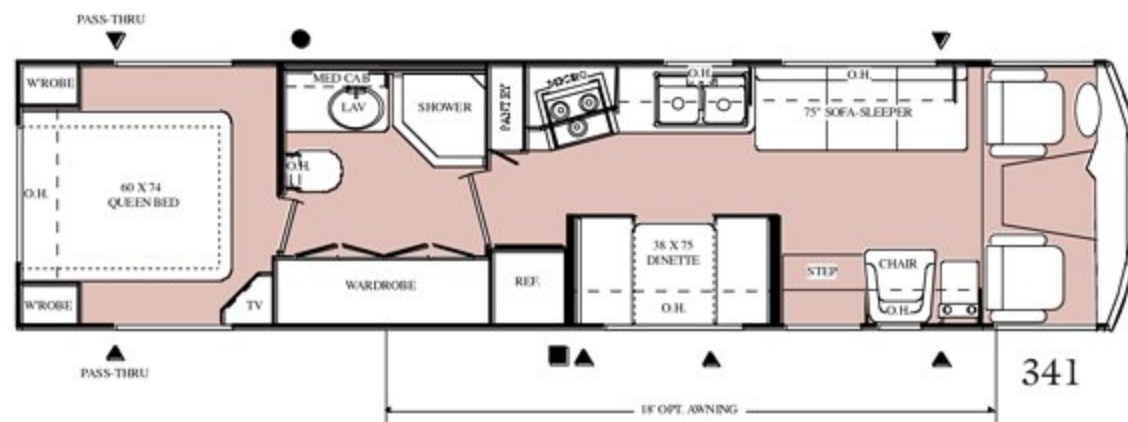
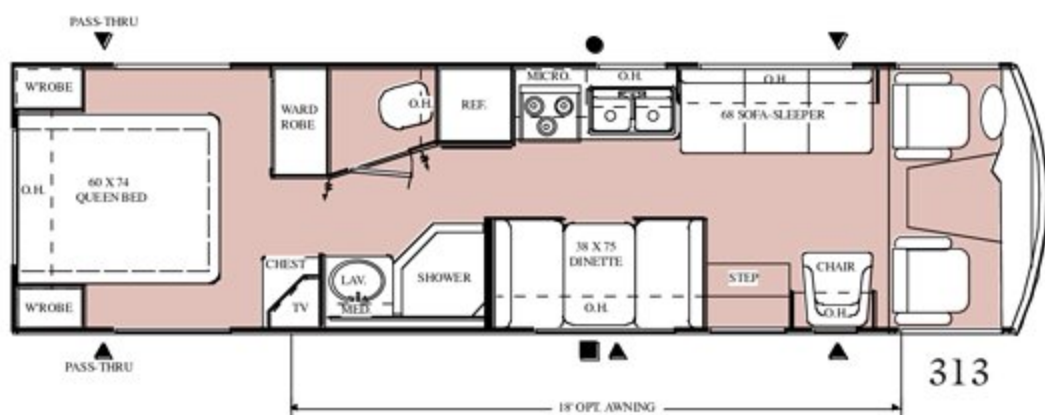
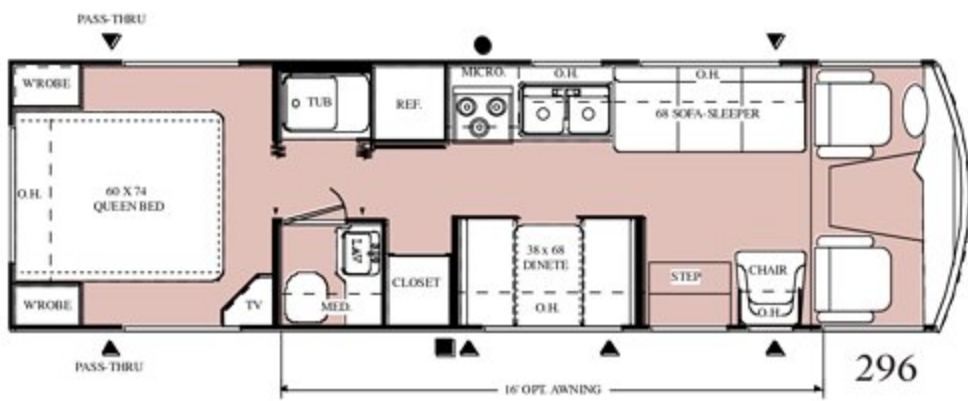
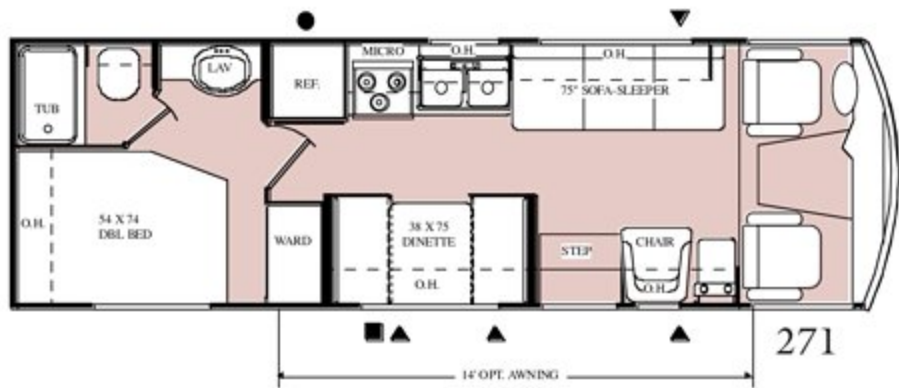


Tidalwave

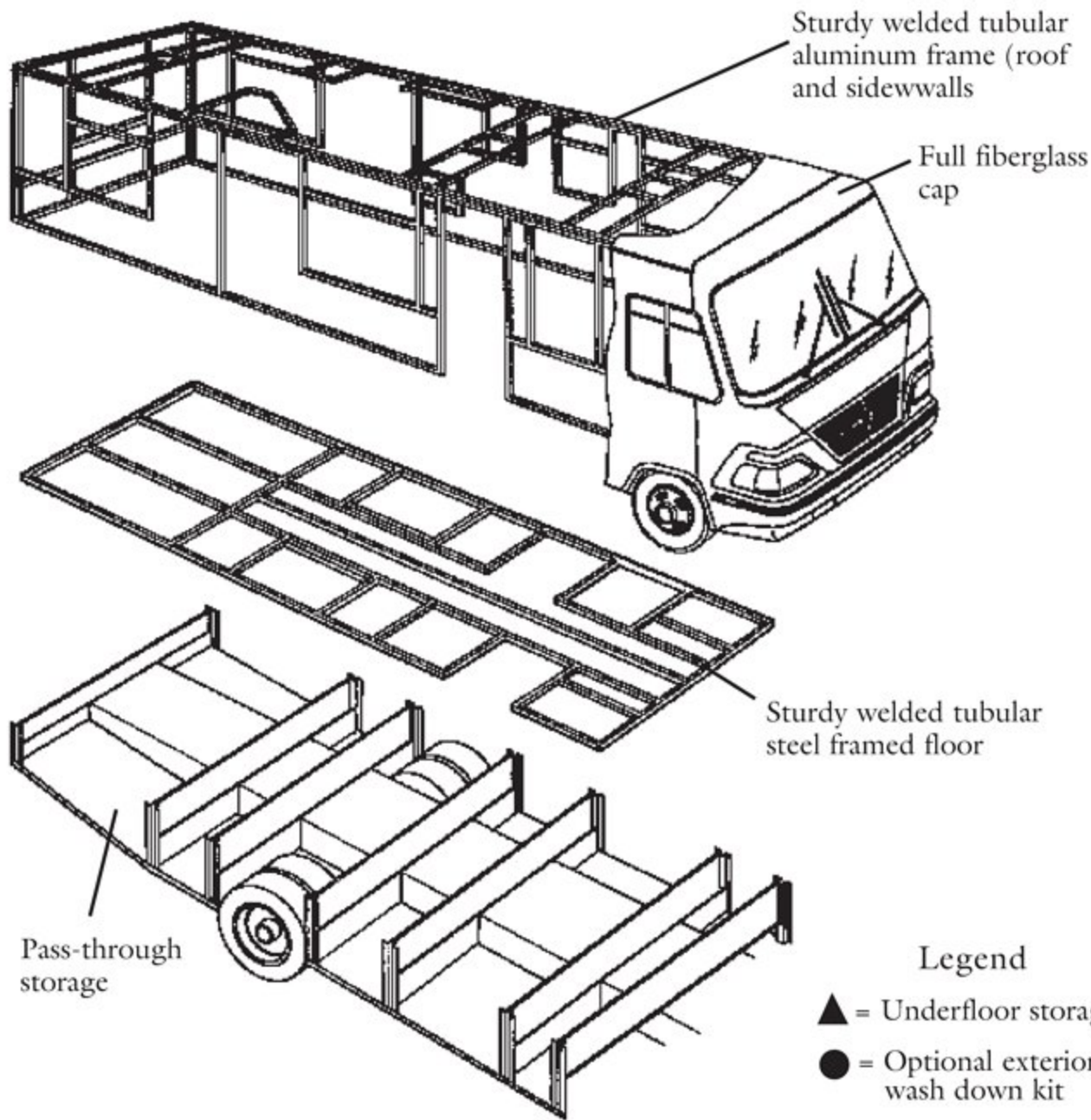


Tealessence

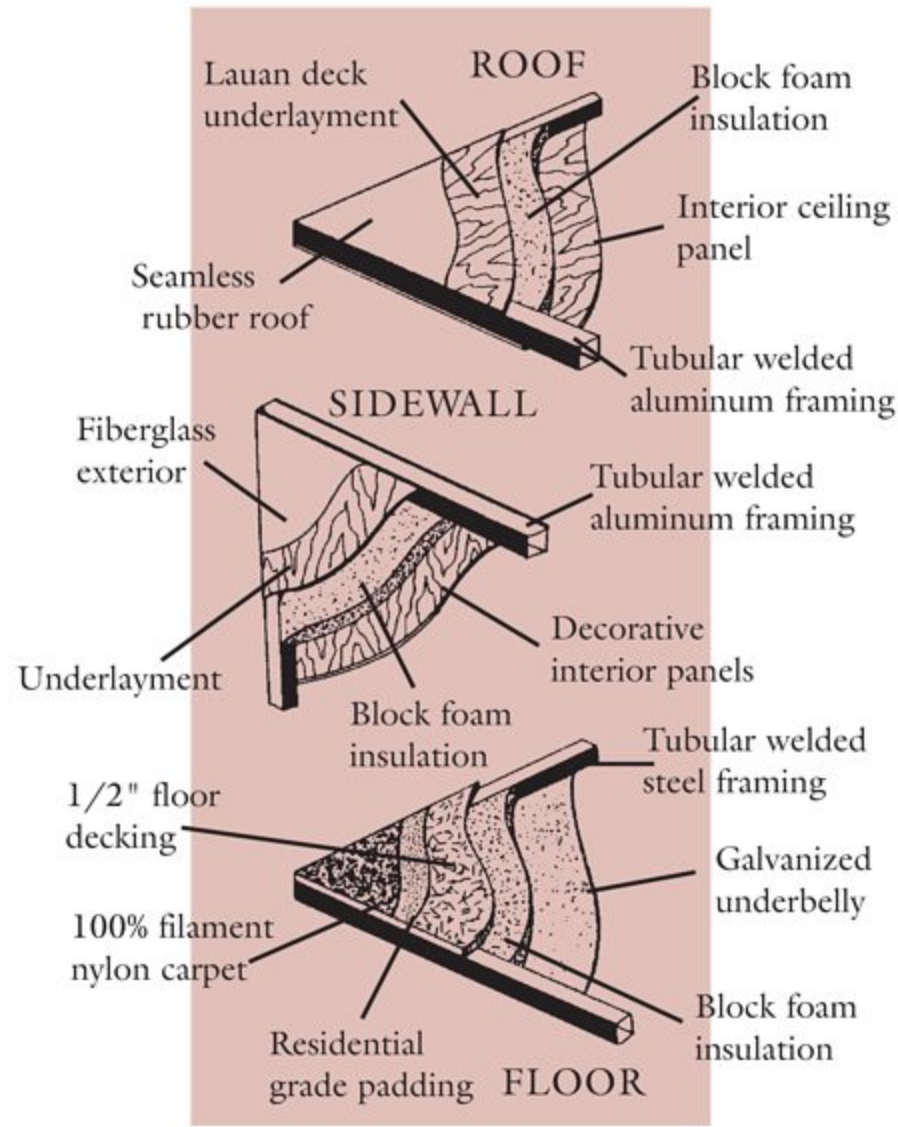




Free-standing dinette  
271, 296, 313, 315, 341



- Legend**
- ▲ = Underfloor storage
  - = Optional exterior wash down kit
  - = Optional exterior entertainment center



## Standard Features

Chassis and Driver: Aerodynamic front fiberglass cap • Tinted wrap-around windshield • Front fiberglass bumper molded into cap • Automotive-style rear bumper • Exterior full-view mirrors • 4-Speed auto transmission w/overdrive • Power steering • Cruise control • Tilt steering wheel • Reclining swivel captain's chairs • Molded dash • Dash air conditioning • Full instrumentation • AM/FM cassette stereo • Hardwood drink tray • Map lights • Sun visors • Emergency start circuit • Under-hood light • Radial tires • Stainless steel wheel covers • Front mud flaps • Trailer hitch

Exterior Features: Colonial white exterior w/deluxe graphics • Black-trimmed, radius top entrance door • Deadbolt door lock • Integrated entrance step • Exterior entry-assist grab handle • Radius corner slider windows (jalousie in bedroom) • Rubber roof • Radius corner domed roof • Roof vents • Roof ladder • Lined & lighted storage compartments • Pass-through storage • Locking exterior storage doors • Sewer hose storage • City water hook-up • Side-mount awning • Awning rail

Electrical Systems: 19" color TV w/full function remote in front O.H. w/antenna, booster & jack • Cable TV hook up • Porch light • Power vent in bath • Exterior GFCI receptacle • Auxiliary deep-cycle battery • Battery disconnect • 45-amp, 12-volt power converter • 30-amp, 120-volt power assembly (non-detachable)

Appliances and Plumbing: 13,500 BTU central air conditioning • Electronic ignition, floor-ducted furnace (31M BTU - 251, 271, 296, 313 & 315; 35M BTU - 341) • Microwave oven w/turn table • 3-burner range and oven • Folding range cover • Lighted power range hood w/monitor panel (including LPG readout) • Flush-mount double-door refrigerator • Double-bowl porcelain kitchen sink • Sink cover • Power bath vent • Hand-flush toilet • Tub/shower/w/surround • Shower curtain • 6-gallon gas water heater w/electric ignition • 12-volt demand water pump • Enclosed & heated holding tanks with pads

Interior Features: Barrel chair • Padded dinette ends • 100% continuous filament nylon carpeting w/Scotchgard treatment & residential padding • Hardwood-framed cabinet doors • Decorator glass in living room overhead cabinet • Windshield privacy drape • Roller shades throughout w/drapes & tiebacks • Mini blind in kitchen • Self-edged countertops throughout • Medicine cabinet w/hardwood-framed door • Hardwood-framed mirror in bath • Queen-size bed • Bedspread & headboard • TV cabinet & jack (bedroom) • Carbon monoxide detector • Smoke detector • Fire extinguisher • Cutlery drawer

## Popular Options

Driver's door w/slider window • Exterior power mirrors • Dash fans • Floor mats • AM/FM/CD stereo with seek/scan & station presets • Electric air horns • 2nd auxiliary deep-cycle battery • Generator w/auto change-over • 50-amp electric service (non-detachable) • Leveling jacks • Stainless steel wheel liners • Microwave oven w/convection • Large flush-mount double-door refrigerator also available w/icemaker • Solid hardwood raised-panel refrigerator front • Water heater by-pass kit • Twin beds (where available) • Interior entry-assist hand rail • LP gas detector • Skylight in shower • Oak plank flooring in kitchen • Telephone jack hookup • Exterior entertainment center with pull-out table (N/A 251) • Color TV (2nd in bedroom) • Video cassette player with remote • Clock & decorator mirror • Air conditioning: 15M BTU central IPO 13.5 • Air conditioning: 11M central (2nd in rear) • Back-up monitor system • Day/night shades in living room • Coffee maker/dust buster combination • Electric entrance step • Vent in bedroom • Fog lights • Foot-flush toilet • Free-standing dinette • Luggage rack • Pull-out swivel TV shelf & tambour door (available 315) • Rear mud flaps • Shower door (Std. in 313, 315, 341) • Spare tire, wheel & bracket • Twin bedspreads and headboards • Upgrade gel-coat wall • Upgrade innerspring mattress • Video control center • See your dealer for additional options.

## Weights and Dimensions

Model	251	271	296	313	315	341
Chassis	Chevy	Chevy	Chevy/Ford	Chevy/Ford	Chevy/Ford	Chevy/Ford
Engine Liter (CID)	7.4 (454)	7.4 (454)	7.4 (454)/7.5 (460)	7.4 (454)/7.5 (460)	7.4 (454)/7.5 (460)	7.4 (454)/7.5 (460)
Fuel Capacity	60	60	80/75	80/75	80/75	80/75
Wheelbase (inches)	158.5"	178"	178"/178"	216.5"/216.5"	216.5"/216.5"	234.5"/234.5"
GVWR	12300	12300	14800/15200	14800/15200	14800/15200	16500/17000
Overall Length	25'8"	27'7"	30'0"	32'4"	32'4"	34'10"
Overall Width	8'0"	8'0"	8'0"	8'0"	8'0"	8'0"
Overall Height w/roof A/C	11'3"	11'3"	11'3"	11'3"	11'3"	11'3"
Fresh Water System (approx. gal.)	63	63	63	63	63	63
Grey/Black Water (approx. gal.)	42/42	42/42	42/42	42/42	42/42	42/42
LP Gas (lb.)	85	85	85	85	85	85
Sleeping Capacity	3	4	4	4	4	4



Your nearest dealer:



P.O. Box 1107 • Elkhart, IN 46515 (219) 262-2624

Due to constant product improvements, the equipment, specifications, component parts and standard/optional equipment are subject to change without notice or obligation. Product photography or diagrams may show equipment that is optional. Damon Corporation reserves the right to make changes in prices, and models, and to discontinue models without notice or obligation. Components, parts, or chassis may have been manufactured at times other than the model year indicated. All capacities are approximate and dimensions are nominal. See your Damon dealer for full details. DC 6/95. © Damon Corporation - 1995 Printed in the USA.