

CHALLENGER BUS MOTORHOMES • 1998

FLOOR PLANS & SPECIFICATIONS



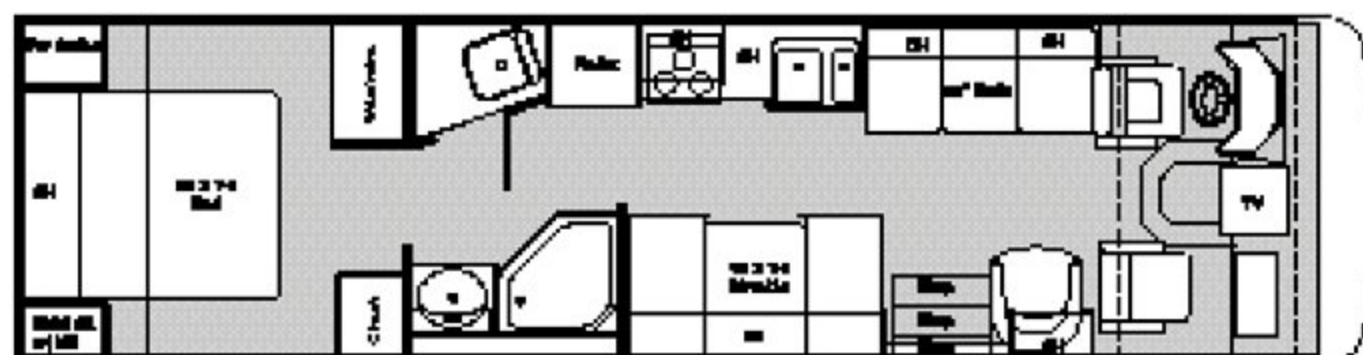
- Only wide-body, full-basement bus in this price range
- Huge exterior pass-through storage area
- "Invisible" floor slide-out
- All new electrical system

Damon

1998 CHALLENGER BUS MOTORHOMES - FLOOR PLANS

Model 310

Chassis	Chevy/Ford
Engine Liter (CD)	7.4 (454)/7.5 (460)
Fuel tank (appx. gal.)	75 gal.
Wheelbase	216.5"
GVWR (lbs.)	16,500/17,000
Base weight	N/A
Length	33'1"
Width	100"
Overall height with A/C	11'7"
Fresh water system (appx. gal.)	70
Grey/black water (appx. gal.)	53/53
LP gas capacity (appx.)	100 lbs.
Sleeping capacity	5



310

Features : Walk-through bath • Neo-angle shower • Excellent bedroom storage

Model 320

Chassis	Chevy/Ford
Engine Liter (CD)	7.4 (454)/7.5 (460)
Fuel tank (appx. gal.)	75 gal.
Wheelbase	208"
GVWR (lbs.)	16,500/17,000
Base weight (appx.)	N/A/13,000
Length	33'2"
Width	100"
Overall height with A/C	11'7"
Fresh water system (appx. gal.)	70
Grey/black water (appx. gal.)	53/53
LP gas capacity (appx.)	100 lbs.
Sleeping capacity	5

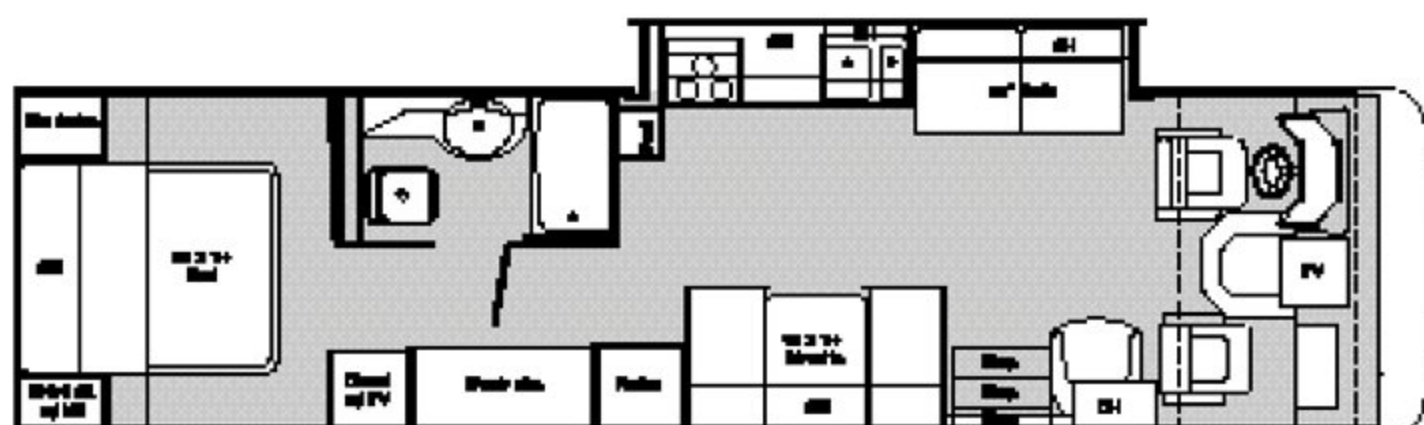


320

Features : "L"-shaped sofa • Walk-through bath • Large bathtub

Model 330

Chassis	Chevy/Ford
Engine Liter (CD)	7.4(454)/7.5 (460)
Fuel tank (appx. gal.)	75 gal.
Wheelbase	216.5"
GVWR (lbs.)	16,500/17,000
Base weight	N/A/13,900
Length	34'8"
Width	100"
Overall height with A/C	11'7"
Fresh water system (appx. gal.)	70
Grey/black water (appx. gal.)	53/53
LP gas capacity (appx.)	100 lbs.
Sleeping capacity	5

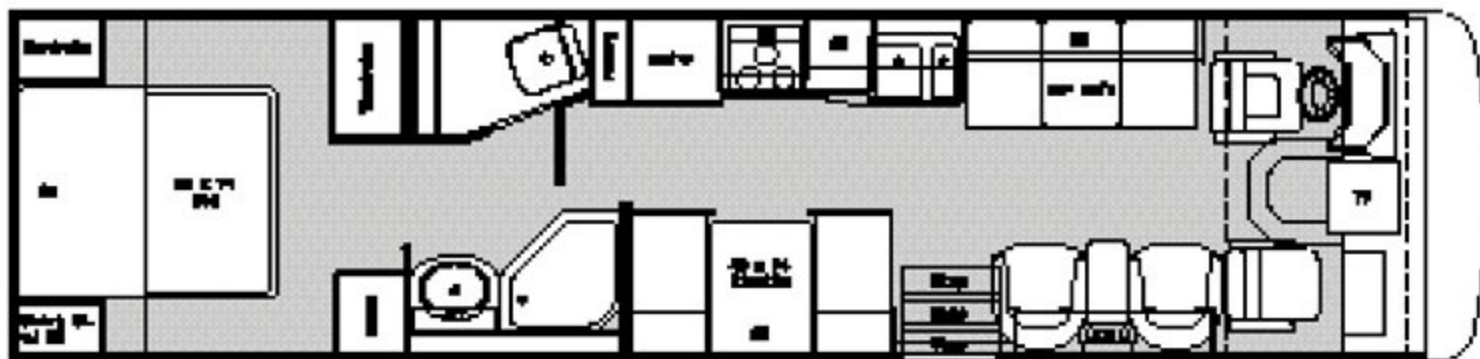


330

Features : Slide-out kitchen • Slide-out does not interfere with pathway when closed • Queen-size hide-a-bed • Pantry

Model 345

Chassis	Ford
Engine Liter (CD)	7.5 (460)
Fuel tank (appx. gal.)	75 gal.
Wheelbase	234.5"
GVWR (lbs.)	N/A
Base weight	N/A
Length	35'5"
Width	100"
Overall height with A/C	11'7"
Fresh water system (appx. gal.)	70
Grey/black water (appx. gal.)	53/53
LP gas capacity (appx.)	100 lbs.
Sleeping capacity	5



345

Features : Two barrel chairs standard • Neo-angle shower • Walk-through bath • Pantry

Note: Base weight = weight of motorhome as produced at factory without options, cargo, occupants, fresh water, LP or dealer-installed accessories.



1998 CHALLENGER BUS MOTORHOMES - SPECIFICATIONS

Kitchen	310	320	330	345
Cutlery drawer	S	N/A	S	N/A
Padded dinette top	S	S	S	S
Solid oak cabinet doors (Power Pack option)	O	O	O	O
Hardwood framed cabinet doors	S	S	S	S
Coffee maker/dust buster (Power Pack option)	O	O	O	O
Refrigerator – flush-mount double-door	S	S	S	S
Refrigerator – large flush-mount double-door	O	O	O	O
Refrigerator – solid oak front	O	O	O	O
Oak plank kitchen flooring (Power Pack option)	O	O	O	O
Microwave oven with turntable	S	S	S	S
Lighted power range hood with monitor panel (including LPG readout)	S	S	S	S
3-burner range and oven	S	S	S	S
Folding range cover	S	S	S	S
2 sink covers	S	S	S	S
Double-bowl acrylic sink (1 bowl oversized)	S	S	S	S
Fire extinguisher	S	S	S	S
Bull nose countertops	S	S	S	S

Living area	310	320	330	345
Day/night shades (Power Pack option)	O	O	O	O
19" color TV with full-function remote in dash with antenna, booster and jack	S	S	S	S
Kool-a-matic power vent	O	O	O	O
100% continuous-filament nylon carpeting with Scotchguard & padding	S	S	S	S
Barrel chair	S	S	S	S
Decorator glass in living room overhead cabinet	S	S	S	S
Decorator clock and mirror	S	S	S	S
Lambrequin window treatments	S	S	S	S
Mini blinds	S	S	S	S
Video Package: VCP and control center	O	O	O	O

S = Standard O = Optional N/A = Not Available



Bedroom	310	320	330	345
Mattress/Twin	O	O	O	O
Mattress/Queen	S	S	S	S
Twin beds with bedspreads and headboards	O	O	O	O
Queen bed with bedspread and headboard	S	S	S	S
Roller shades with drapes and valances	S	S	S	S
TV cabinet and jack	S	S	S	S
Upgrade mattress	O	O	O	O

Bathroom	310	320	330	345
Power vent	S	S	S	S
Foot-flush toilet	S	S	S	S
Tub/shower with surround	N/A	S	S	S
Shower with surround	S	N/A	N/A	S
Glass shower door	S	S	S	S
Large custom medicine cabinet with hardwood framed door & mirror	S	S	S	S
Skylight in shower – rectangle	S	S	S	S
Bull nose countertops	S	S	S	S

S = Standard

O = Optional

N/A = Not Available

Y O U R S B Y D E S I G N |



Damon
Designer Details

1998 CHALLENGER BUS MOTORHOMES - SPECIFICATIONS

Entry	310	320	330	345
Electric entrance step	O	O	O	O
Integrated entrance step	S	S	S	S
Exterior entry-assist grab handle	S	S	S	S
Deadbolt door lock	S	S	S	S
White trimmed, radius-top entrance	S	S	S	S
Interior oak entry handle	S	S	S	S
Toolbox in stairwell	S	S	S	S
Battery access in stairwell	S	S	S	S



Challenger

Exterior	310	320	330	345
Entertainment center with pullout table	O	O	N/A	N/A
Utility shower	O	O	O	O
Fog lights	O	O	O	O
Porch light	S	S	S	S
Side-mount awning	O	O	O	O
Awning rail	S	S	S	S
Contoured front bumper	S	S	S	S
Rear fiberglass cap	S	S	S	S
Ice White™ smooth fiberglass exterior with DLX graphics	S	S	S	S
Locking exterior storage doors	S	S	S	S
Full-basement, 12"-high pass-through storage	S	S	S	S
Easy-to-clean, lighted rotocast storage compartments	S	S	S	S
Radius-corner domed roof	S	S	S	S
Roof rack (Power Pack option)	O	O	O	O
Roof ladder	S	S	S	S
Roof vents	S	S	S	S
Rubber roof	S	S	S	S
Sewer hose storage	S	S	S	S
GFCI receptacle	S	S	S	S
Paint package	O	O	O	O
White frame radius-corner slider windows	S	S	S	S

S = Standard

O = Optional

N/A = Not Available

Utilities	310	320	330	345
Dual 6-volt auxiliary batteries	S	S	S	S
Battery disconnect	S	S	S	S
30-amp, 120-volt power assembly	S	S	S	S
Solid-state 45-amp, 12-volt power converter	S	S	S	S
12-volt demand water pump	S	S	S	S
35M BTU-electronic ignition ducted furnace	S	S	S	S
Air Conditioner: 13.5 BTU roof	S	S	S	S
Air Conditioner: rear 11.0 central	O	O	O	O
Air Conditioner: 13.5 ducted central	O	O	O	O
Air Conditioner: 15.0 ducted central	O	O	O	O
Generator: Onan 5.0	O	O	O	O
Generator: Onan 6.5	O	O	O	O
Wire for generator with auto changeover	S	S	S	S
Telephone hookup	O	O	O	O
Cable TV hookup	S	S	S	S
City water hookup	S	S	S	S
Water heater bypass kit	S	S	S	S
6-gallon gas water heater with electric ignition	S	S	S	S
Carbon monoxide detector	S	S	S	S
LP gas detector	S	S	S	S
Smoke detector	S	S	S	S
Harness 12-volt wiring	S	S	S	S
Electronic battery control center	S	S	S	S
Enclosed heated holding tanks	S	S	S	S

Chassis	310	320	330	345
Stainless steel wheel liners	O	O	O	O
Spare tire, wheel & bracket	O	O	O	O
Front and rear mud flaps	S	S	S	S
Radial tires	S	S	S	S
Wheel covers	S	S	S	S
Trailer hitch	S	S	S	S
Leveling jacks	O	O	S	O
4-speed auto transmission with overdrive	S	S	S	S
Newly styled aerodynamic front & rear fiberglass cap	S	S	S	S
Automotive-style rear bumper	S	S	S	S
Emergency start circuit	S	S	S	S
Underhood light	S	S	S	S
Layer of neoprene vibration dampener	S	S	S	S
Wide-body design	S	S	S	S

S = Standard

O = Optional

N/A = Not Available



1998 CHALLENGER BUS MOTORHOMES - SPECIFICATIONS

Cockpit	310	320	330	345
Burl dash	O	O	O	O
Padded vinyl dash with ABS instrument pod	S	S	S	S
Dash fans (Power Pack option)	O	O	O	O
Electronically controlled dash air-conditioning	S	S	S	S
Backup monitor system	O	O	O	O
Tinted wraparound windshield	S	S	S	S
Side-mount power mirrors	O	O	O	O
Exterior full-view mirrors	S	S	S	S
Driver's door with slider window	O	O	O	O
Leather insert captain's chairs (set/2)	O	O	O	O
Leather captain's chair	O	O	O	O
Reclining swivel captain's chairs	S	S	S	S
Cruise control	S	S	S	S
Full instrumentation	S	S	S	S
Power steering	S	S	S	S
Tilt steering wheel	S	S	S	S
Windshield privacy drape	S	S	S	S
Floor mats	S	S	S	S
Sun visors	S	S	S	S
AM/FM cassette stereo	S	S	S	S
Map lights	S	S	S	S
Hardwood drink tray	S	S	S	S

S = Standard O = Optional N/A = Not Available



Power Pack Option Package	
Solid oak cabinet doors	Coffee maker/dust buster
Oak plank kitchen flooring	Dash fans
Roof rack	Day/night shades in living room

Your nearest dealer:



Go RVing.

P.O. Box 1107
Elkhart, IN 46515
1-800-860-5658



Due to constant product improvements, the equipment, specifications, component parts and standard/ optional equipment are subject to change without notice or obligation. Product photography or diagrams may show equipment that is optional. Damon Corporation reserves the right to make changes in prices and models, and to discontinue models without notice or obligation. Components, parts, or chassis may have been manufactured at times other than the model year indicated. All capacities are approximate and dimensions are nominal. See your Damon dealer for full details. DC 10/ 97. © Damon Corporation - 1997 Printed in the USA.