

A M E R I C A N D R E A M

THE AMERICAN COACH WAY OF LIFE.

TAKE A STAND FOR FREEDOM.

Well, what are you waiting for? Retirement? Lottery winnings? The kids to move out of the house? Maybe it's time for you to move out instead.

Maybe it's time, once and for all, to take a stand for *you*. The places you want to go. The things you want to do. The oceans you want to swim.

Of course, we realize you probably haven't given a lot of thought to such things since you were a little kid yourself. But by now, you've paid your adult dues. And it's time to reclaim that freedom you lost somewhere between hanging on a rope swing and landing your first job.

It's time for American Coach. Perhaps more than any luxury coach manufacturer in the world, we understand how you feel. Our motorcoaches are proof of that.



They're the type that can tackle the Grand Tetons one minute and tear up the passing lane the next. Safely. Dependably. And with the kind of worry-free abandon that comes from knowing the road's best service and warranty package is backing you up.

You see, at American Coach, we realize our motorcoaches aren't the first RVs most people buy. They're the ones you dream about, envy, and work toward all your life. That's why they have to be as extraordinary as we can make them.

Yes, we know you've waited a long time to be a kid again. Just make sure you buy a motorcoach that can handle it.

The 1999 American Dream. Come on, let's go. You've got a lot of sand castles to build.



THE A M E R I C A N D R E A M 1 9 9 9

A M E R I C A N D R E A M

T H E A M E R I C A N C O A C H W A Y O F L I F E .

T A K E A S T A N D F O R F R E E D O M .

Well, what are you waiting for? Retirement? Lottery winnings? The kids to move out of the house? Maybe it's time for you to move out instead.

Maybe it's time, once and for all, to take a stand for *you*. The places you want to go. The things you want to do. The oceans you want to swim.

Of course, we realize you probably haven't given a lot of thought to such things since you were a little kid yourself. But by now, you've paid your adult dues. And it's time to reclaim that freedom you lost somewhere between hanging on a rope swing and landing your first job.

It's time for American Coach. Perhaps more than any luxury coach manufacturer in the world, we understand how you feel. Our motorcoaches are proof of that.



They're the type that can tackle the Grand Tetons one minute and tear up the passing lane the next. Safely. Dependably. And with the kind of worry-free abandon that comes from knowing the road's best service and warranty package is backing you up.

You see, at American Coach, we realize our motorcoaches aren't the first RVs most people buy. They're the ones you dream about, envy, and work toward all your life. That's why they have to be as extraordinary as we can make them.

Yes, we know you've waited a long time to be a kid again. Just make sure you buy a motorcoach that can handle it.

The 1999 American Dream. Come on, let's go. You've got a lot of sand castles to build.



T H E A M E R I C A N D R E A M 1 9 9 9

All your life you've been reaching for something better.

Now, the dream is within your grasp.

Only a few have dared to dream it. Even more remarkable are those who have achieved it. It's the life of absolute freedom and authenticity. No demands, limits or itineraries. Without a doubt, it's the ultimate luxury. And it's your new job: seeing all the places and doing all the crazy things you always wanted to do. Before you report for duty, we have just two words of advice: American Coach.

That's all any free spirit needs to know, really. Because when you're driving an American Coach product, you're driving one of the safest, surest, most satisfying motorcoaches in the world. What'll it be this week? Cruising to the top of Pike's Peak? Surprising an old college buddy? A day (or three) at the Smithsonian? Wherever the spirit of adventure calls you next, you can be certain of one thing: American Coach will take you there.

Each year, our high line diesel coaches carry thousands of people across millions of miles of rocky coastlines, desert highways, mountain switchbacks and quiet country roads. But no matter how long the journey, owners tell us, they always feel right at home. Maybe it's our roomy, luxurious interiors. Maybe it's the effortless way our coaches drive. Or, the peace of mind that comes from knowing you've purchased one of the best-built, best-backed motorcoaches in the world. Whatever the reason, we invite you to experience it for yourself. American Coach. Climb aboard. Take that list of things you said you were going to do. And throw it out the window.

Create your own American Dream. One day at a time.

American Coach

THE ROAD BECKONS. AMERICA CALLS.

All your life you've been reaching for something better.

Now, the dream is within your grasp.

Only a few have dared to dream it. Even more remarkable are those who have achieved it. It's the life of absolute freedom and authenticity. No demands, limits or itineraries. Without a doubt, it's the ultimate luxury. And it's your new job: seeing all the places and doing all the crazy things you always wanted to do. Before you report for duty, we have just two words of advice: American Coach.

That's all any free spirit needs to know, really. Because when you're driving an American Coach product, you're driving one of the safest, surest, most satisfying motorcoaches in the world. What'll it be this week? Cruising to the top of Pike's Peak? Surprising an old college buddy? A day (or three) at the Smithsonian? Wherever the spirit of adventure calls you next, you can be certain of one thing: American Coach will take you there.

Each year, our high line diesel coaches carry thousands of people across millions of miles of rocky coastlines, desert highways, mountain switchbacks and quiet country roads. But no matter how long the journey, owners tell us, they always feel right at home. Maybe it's our roomy, luxurious interiors. Maybe it's the effortless way our coaches drive. Or, the peace of mind that comes from knowing you've purchased one of the best-built, best-backed motorcoaches in the world. Whatever the reason, we invite you to experience it for yourself. American Coach. Climb aboard. Take that list of things you said you were going to do. And throw it out the window.

Create your own American Dream. One day at a time.

American Coach

THE ROAD BECKONS. AMERICA CALLS.

LOTS OF MUSCLE AND A BRAND NEW BRAIN: THE CUMMINS® ISC 330.

We're constantly looking to improve the driving experience in your American Coach.

This year power, comfort and control take a dramatic leap forward, with the American

Dream's new ISC 330 Cummins® engine. It's 330 horsepower and 8.3 liters like before — but now, it's fully electronic.

That translates into space-age features like on-board diagnostics, interactive systems, road speed



governing, trip information, duty cycle monitoring and more. Other engine block improvements result in significantly reduced noise and vibration.

Increased towing power, torque and fuel economy. Cooler operation. And quicker response across the entire power band.

Mountains, ho!

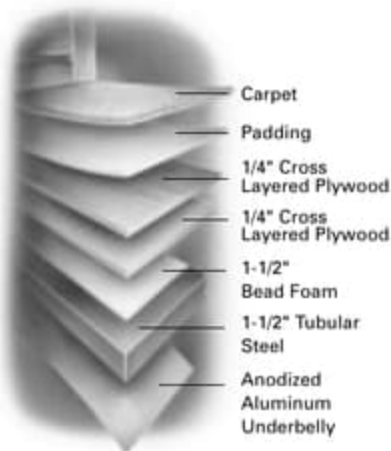
Every 1999 American Dream is equipped with Independent Front Suspension for tighter handling and a smoother ride. With IFS, each wheel responds independently to bumps and dips in the road, giving you greater vehicle stability, fewer road vibrations, and more control when braking and steering.



They're inventors, mathematicians, stress analysts, wireheads and perfectionists. They're a great bunch of guys who really care what happens to you.

Our engineers strive to make every ride in an American Coach more of the pleasure it was meant to be. Think of them when you take your test drive.

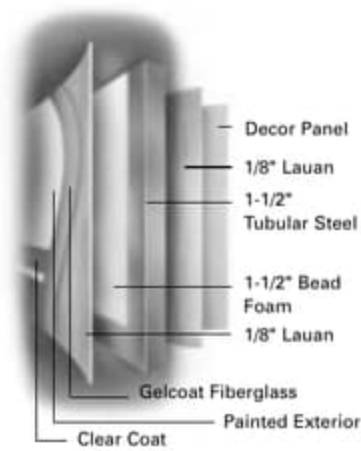
SOME ADDITIONAL POINTS OF INTEREST.



7-Layer Floor
with Enclosed Underbelly



7-Layer Ceiling
with Rubber Roof



Fiberglass
Sidewalls

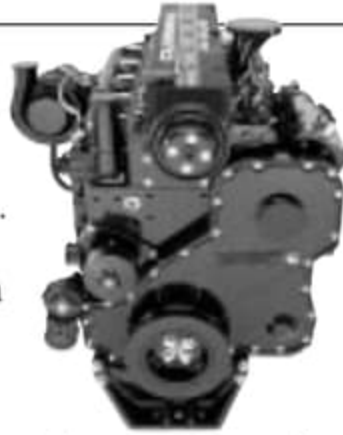
LOTS OF MUSCLE AND A BRAND NEW BRAIN: THE CUMMINS® ISC 330.

We're constantly looking to improve the driving experience in your American Coach.

This year power, comfort and control take a dramatic leap forward, with the American

Dream's new ISC 330 Cummins® engine. It's 330 horsepower and 8.3 liters like before — but now, it's fully electronic.

That translates into space-age features like on-board diagnostics, interactive systems, road speed



governing, trip information, duty cycle monitoring and more. Other engine block improvements result in significantly reduced noise and vibration.

Increased towing power, torque and fuel economy. Cooler operation. And quicker response across the entire power band.

Mountains, ho!

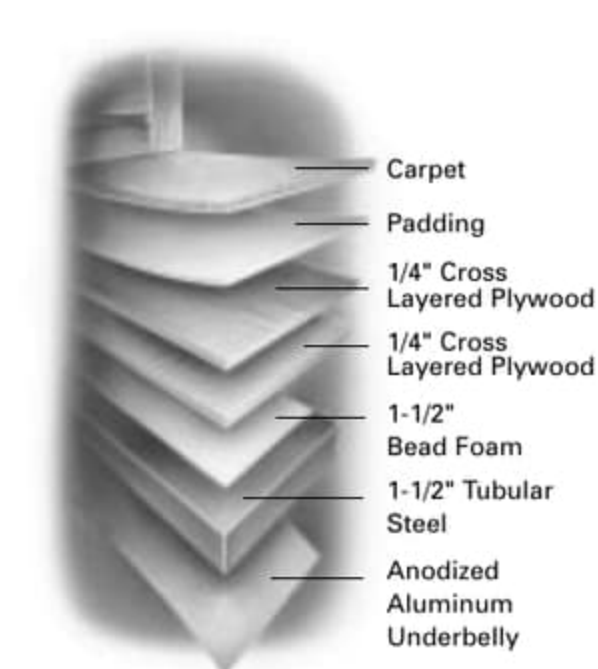
Every 1999 American Dream is equipped with Independent Front Suspension for tighter handling and a smoother ride. With IFS, each wheel responds independently to bumps and dips in the road, giving you greater vehicle stability, fewer road vibrations, and more control when braking and steering.



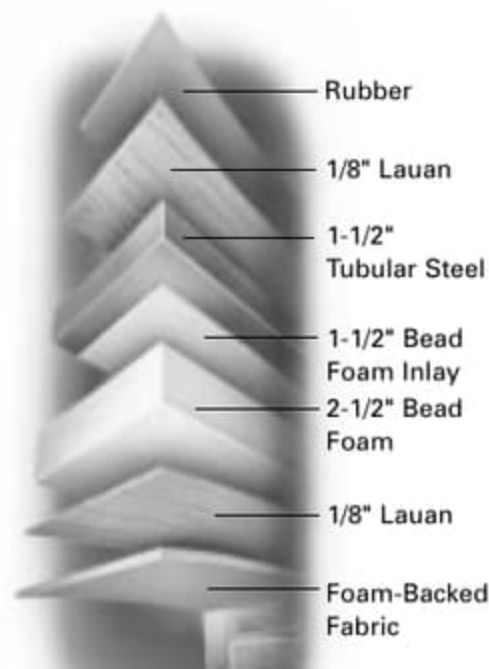
They're inventors, mathematicians, stress analysts, wireheads and perfectionists. They're a great bunch of guys who really care what happens to you.

Our engineers strive to make every ride in an American Coach more of the pleasure it was meant to be. Think of them when you take your test drive.

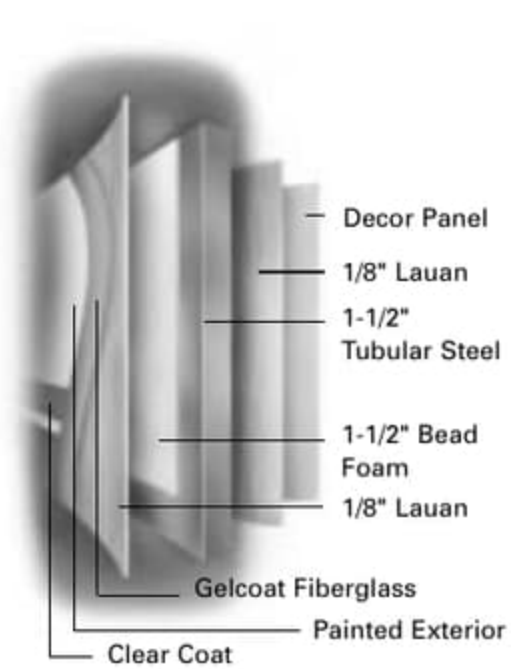
SOME ADDITIONAL POINTS OF INTEREST.



7-Layer Floor
with Enclosed Underbelly



7-Layer Ceiling
with Rubber Roof



Fiberglass
Sidewalls

DREAM SPECIFICATIONS

WEIGHTS (POUNDS)

	40DVS	39DAF
GVWR	31,000	31,000
GCWR	41,000	41,000
GAWR (front)	12,000	12,000
GAWR (rear)	19,000	19,000
UVW	25,600	24,500

MEASUREMENTS

	40DVS	39DAF
Wheelbase	266"	258"
Overall Length	40' 1-1/2"	39' 2"
Overall Height w/AC	12'	12'
Interior Height (max.)	79"	79"
Interior Width (max.)	96"	96"
Exterior Width (max.)	102"	102"

TANK & LIQUID CAPACITIES (GALLONS)

	40DVS	39DAF
Grey Water Tank	60	60
(Waste) Black Water Tank	40	40
Fresh Water Tank	100	100
L.P. Tank	40.3	40.3
Water Heater	10	10
Fuel Tank w/Dual Side Fills	150	150

CHASSIS

Frame	Spartan® Mountain Master Stacked Rail
Engine	Cummins® C.8.3L/330 HP ISC
Torque	950 @ 1400 RPM
Cubic Inch	504.5
Transmission	Allison® MD-3060, 6-Speed World w/Electronic Shifter
Alternator Amps	160 Amp Leece Neville
Tires	G159 22.5" Low Profile Highway Radial

10 REASONS YOUR MOTORCOACH RIDES LIKE A DREAM.

1. Independent Front Suspension allows each wheel to respond independently to bumps and dips in the road, giving you greater vehicle stability, a smoother ride, and tighter control when braking and steering.
2. Our custom-built Spartan® Mountain Master chassis features a stacked rail design for voluminous basement storage.
3. To make the chassis even stronger, Spartan® welds on steel outriggers that help support the floor and provide added structural integrity.
4. All weight-bearing items, such as holding tanks and diesel fuel tanks, are positioned between the frame rails for better weight distribution and stability.
5. To protect the electrical wiring from road damage, we've routed it inside a custom-designed steel raceway.
6. The chassis frame has a single unitized design for added structural strength.
7. For road-gripping reassurance, every coach is equipped with large 22.5" Goodyear® radial tires.
8. Our big 150 gallon fuel tank means you'll go farther between pit stops. For added convenience, the tank can be filled from either side of the coach.
9. For safer handling and a smoother ride, every American Dream comes with upgraded Rockwell anti-lock brakes and full air ride suspension.
10. The new Allison® MD-3060 6-speed automatic transmission is the strongest in its class, giving you efficient, diehard power in all kinds of driving situations.

DREAM SPECIFICATIONS

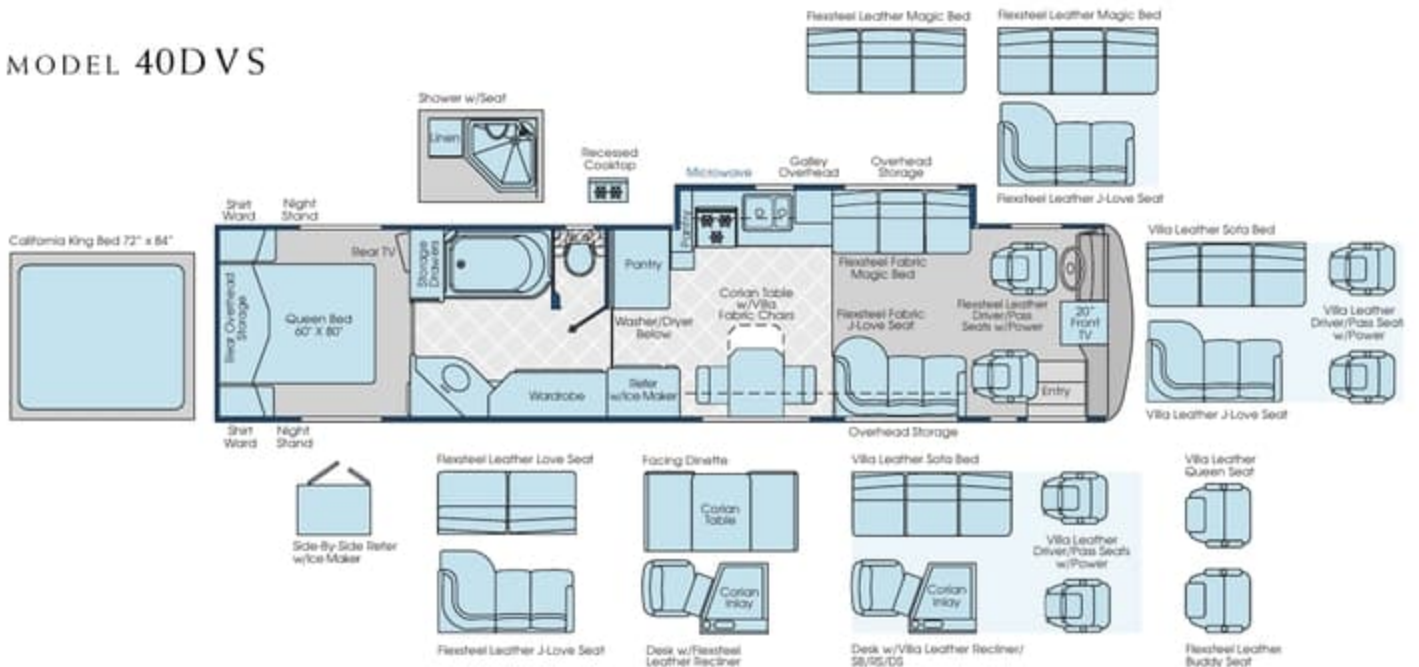
WEIGHTS (POUNDS)			TANK & LIQUID CAPACITIES (GALLONS)		
	40DVS	39DAF		40DVS	39DAF
GVWR	31,000	31,000	Grey Water Tank	60	60
GCWR	41,000	41,000	(Waste) Black Water Tank	40	40
GAWR (front)	12,000	12,000	Fresh Water Tank	100	100
GAWR (rear)	19,000	19,000	L.P. Tank	40.3	40.3
UVW	25,600	24,500	Water Heater	10	10
			Fuel Tank w/Dual Side Fills	150	150
MEASUREMENTS			CHASSIS		
	40DVS	39DAF	Frame	Spartan® Mountain Master Stacked Rail	
Wheelbase	266"	258"	Engine	Cummins® C.8.3L/330 HP ISC	
Overall Length	40' 1-1/2"	39' 2"	Torque	950 @ 1400 RPM	
Overall Height w/AC	12'	12'	Cubic Inch	504.5	
Interior Height (max.)	79"	79"	Transmission	Allison® MD-3060, 6-Speed World w/Electronic Shifter	
Interior Width (max.)	96"	96"	Alternator Amps	160 Amp Leece Neville	
Exterior Width (max.)	102"	102"	Tires	G159 22.5" Low Profile Highway Radial	

10 REASONS YOUR MOTORCOACH RIDES LIKE A DREAM.

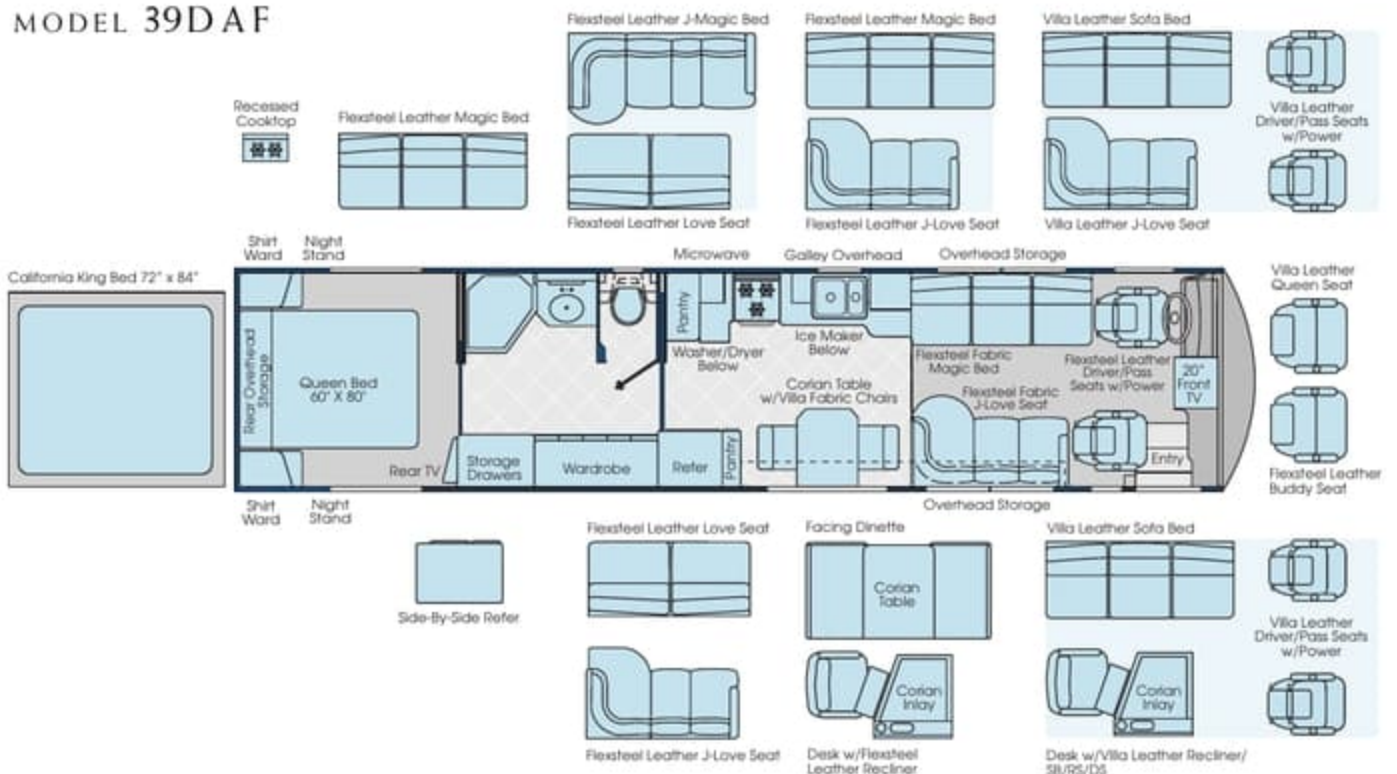
1. Independent Front Suspension allows each wheel to respond independently to bumps and dips in the road, giving you greater vehicle stability, a smoother ride, and tighter control when braking and steering.
2. Our custom-built Spartan® Mountain Master chassis features a stacked rail design for voluminous basement storage.
3. To make the chassis even stronger, Spartan® welds on steel outriggers that help support the floor and provide added structural integrity.
4. All weight-bearing items, such as holding tanks and diesel fuel tanks, are positioned between the frame rails for better weight distribution and stability.
5. To protect the electrical wiring from road damage, we've routed it inside a custom-designed steel raceway.
6. The chassis frame has a single unitized design for added structural strength.
7. For road-gripping reassurance, every coach is equipped with large 22.5" Goodyear® radial tires.
8. Our big 150 gallon fuel tank means you'll go farther between pit stops. For added convenience, the tank can be filled from either side of the coach.
9. For safer handling and a smoother ride, every American Dream comes with upgraded Rockwell anti-lock brakes and full air ride suspension.
10. The new Allison® MD-3060 6-speed automatic transmission is the strongest in its class, giving you efficient, diehard power in all kinds of driving situations.

DREAM FLOORPLANS

MODEL 40DVS

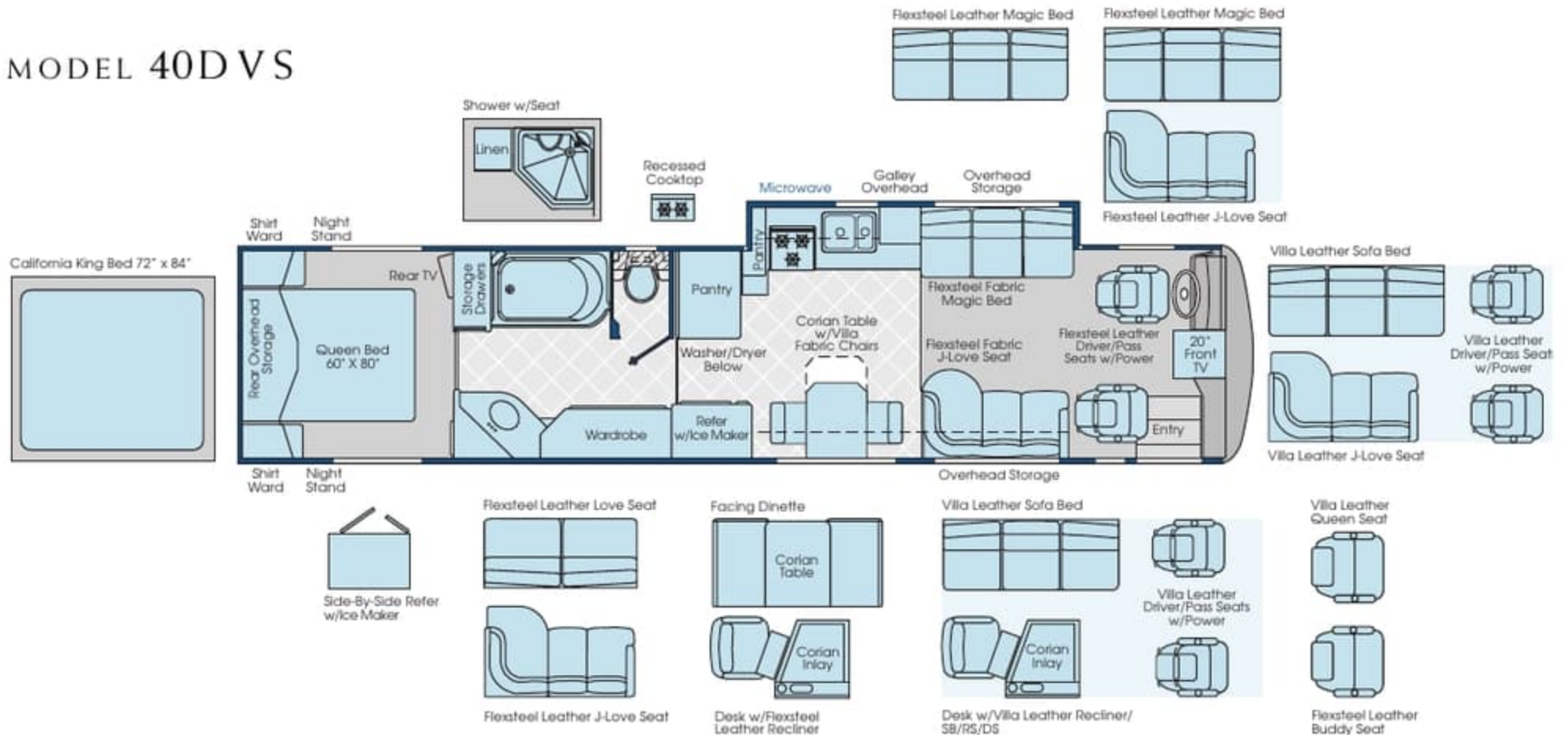


MODEL 39DAF

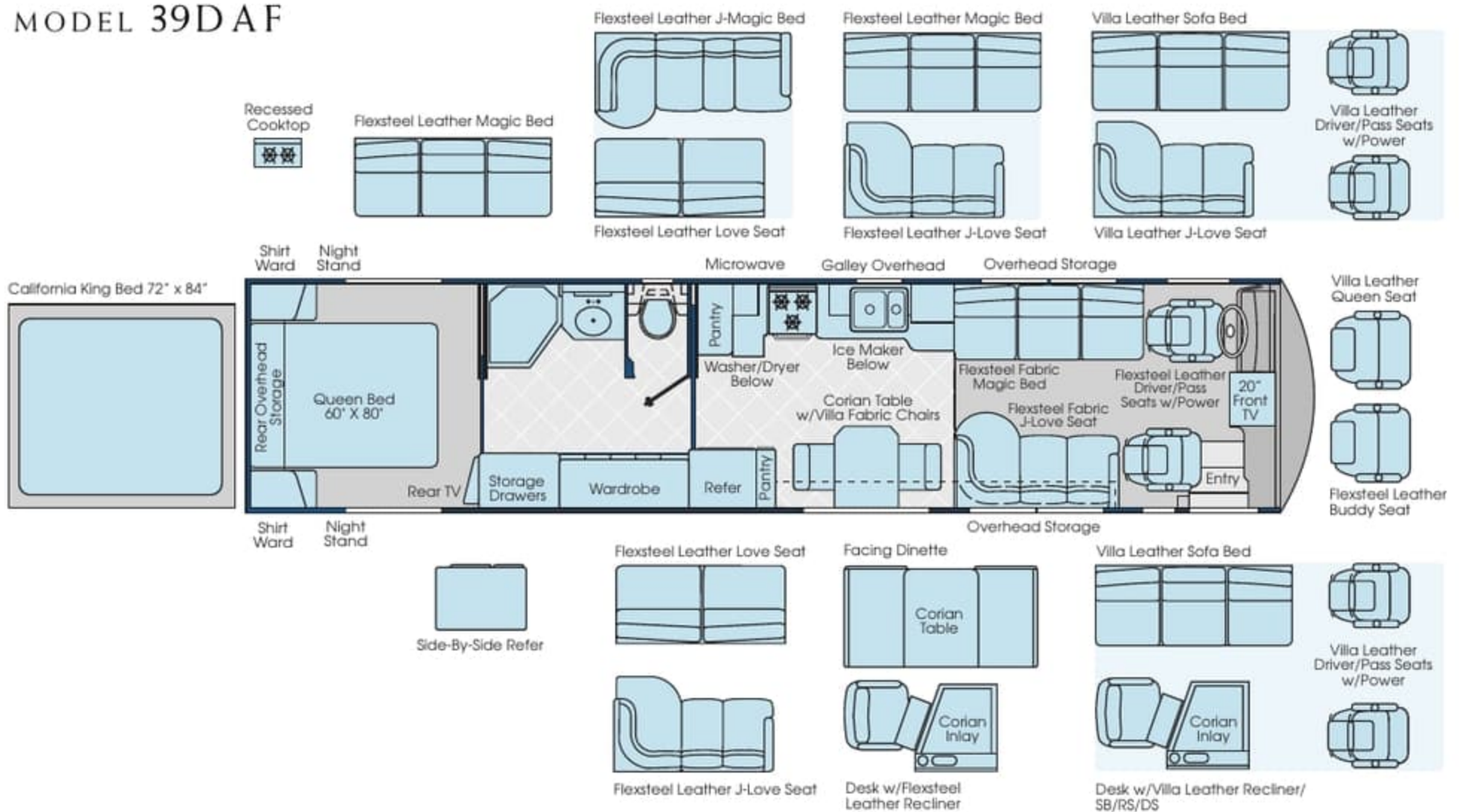


DREAM FLOORPLANS

MODEL 40DVS



MODEL 39DAF



STANDARD & OPTIONAL FEATURES

AUTOMOTIVE

- S Engine—Cummins® C.8.3 Liter, 330 HP ISC Diesel
- S Transmission—Allison® MD-3060 6-Speed Automatic
- O Spartan® Mountain Master Chassis
- S Independent Front Suspension w/45° Steering Angle
- S Curved Windshield (Tint Band)
- S Single Motor Windshield Wiper System
- S Intermittent Wipers
- S Tilt/Telescoping Steering Wheel
- S Double Swivel Visors with Extensions
- S Back Lighted Instrument Panel
- S Driver/Passenger Wood Drink Tray
- S (4) 6 Volt Battery 217 Amp Auxiliary Batteries
- S (2) 12 Volt Batteries 2000 CCA
- S Electronic Battery Control Center
- S Polyethylene Battery Trays
- S Undercoating
- S 4 Cast Aluminum Wheels
- S Battery Disconnects
- S Nippondenso Climate Control System
- S Trailer Hitch 10,000 lb. Capacity
- S Cruise Control
- S Remote Auxiliary Start System
- S Auxiliary Fog Lights
- S Dash Fans
- S Radial Tires
- S 3-Point Leveling Jacks
- S Power Driver Window
- S Steel Surface on Front Bulkhead/Engine Frame
- S 6-Way Power Driver/Passenger Seats—Leather
- S Sony® Rear Vision System with Audio
- S Sony® AM/FM Cassette and CD Changer (10 Pack)
- S Sound Insulation in Subfloors, Front and Rear
- S CB Radio Ready
- S Heated Mirrors with Remote Adjustment
- S Mud Flaps
- S Underhood Utility Light—Front and Rear
- S Air Horns
- S I.C.C. Light Switch
- O Hand-Held CB
- O Manual Air Dump Override Switch
- S Driver/Passenger Map Lights
- S Full Air Brakes with Automatic Slack Adjusters
- S Air Ride Suspension w/Bilstein® Shocks
- S Pneumatic Pop-Up Stepwell Cover
- S ABS Brakes
- S PAC Brake
- S Full Instrumentation/Analog
- S Auxiliary 12V Dash Receptacle
- S Large VDO Dash Gauges
- S Automotive Safety Dash (w/TV)

STRUCTURAL

- S Stacked Rail Chassis Frame
- S Vacubond Floor
- S Vacubond Walls with Laid-up Fiberglass
- S Steel Reinforced Sidewall and Ceiling Construction
- S Steel Outriggers on Chassis
- S Heated Water and Holding Tank Compartments
- S Vacubond Insulated Storage Areas

EXTERIOR

- S Fresh Water Hose
- S Dual Holding Tank Sani-Flush System
- S Full Fiberglass Front and Rear Caps
- S Domed Rubber Roof with Radius Corners
- S Fiberglass Front and Rear Quarter Panels
- O Two-Piece Rear Ladder
- S Halogen Headlights
- S Spotlight with Remote Control
- S Stainless Steel Front and Rear Bumpers
- S 42 Gallon Floor Mounted LPG Tank
- S Tank Level Monitor
- S Exterior Convenience Light at Dump Valves
- S Exterior Graphics (4 Colors)
- S Patio Awning 20'
- S 12' RS Living Area Awning
- S 5' RS/DS Bedroom Area Awning (2)
- S Solar Charging Panel
- S 50 Amp Service 120 Volt Power Cord
- S Power Single Entry Step
- S 29" Front Entry Door with Dead Bolt
- S Deluxe Entry Handles
- S Exterior Flip-Up Storage Doors
- S Locking Exterior Storage Compartments
- S Luggage Compartment Lights
- S Protective Bra Cover
- O 54" Compartment Slide-Out Tray
- S Docking Lights—2 Each Front and Rear
- S Awning Rail Molding RS/DS
- O Exterior Entertainment Center
- S Exterior Rinse Hose with Soap Dispenser and Paper Towel Holders
- S Fresh Water Fill
- S Water Pump Switch
- S 50' Air Service Line
- S Dual Pane Windows
- O Screen Door
- O Digital Satellite System with Automatic Lift
- O 12' D/S Awning

APPLIANCES

- S Dual 13,500 BTU Roof A/C
- S Onan® 7.5 kw Quiet Diesel Generator
- S Dual Furnaces with Thermostat and Auto Ignition BTU (35M Each)
- S Park Telephone Ready
- S Rigid Furnace Ducting System

- S Patio Receptacles
- S LP/120/12 Volt Large Double Door Refrigerator
- O LP/120 Volt Side-By-Side Refrigerator
- S 3-Burner Deluxe Range with Large Oven and Corian® Cover
- O Kitchen Aid® 2-Burner Recessed Cooktop
- S Convection Microwave Oven w/Built-in Power Range Hood w/Fan and Light
- S Ice Maker (DAF Only)
- S Water Filter
- S Washer/Dryer
- S Motorized Elevating 20" Color TV (Front) with Remote
- S 13" Color TV (Rear) with Remote
- S VHS-VCR
- S **♥ heart interface**—Source Manager 20 2000 Watt Continuous Inverter 100 Amp Converter, Intelligent Transfer Switching
- S Multi-Point Water Pump Switching
- O LP/120 Volt Side-By-Side Refrigerator w/Ice Maker (DVS Only)
- S LP/120/12 Volt Large Double Door Refrigerator w/Ice Maker (DVS Only)
- S Residential China Bowl Toilet with Flush
- S D.S.I. 10 Gallon Water Heater LP/110V
- S Smoke Detector
- S Fire Extinguisher
- S LPG Leak Detector with Automatic Shut-Off
- S 12 Volt Carbon Monoxide Detector

GALLEY

- S Corian® Sink Covers
- S Corian® Galley Top
- S Extra Large Stainless Steel Kitchen Sink, Double Bowl
- S Silverware Tray
- S Single Lever Galley Faucet
- S Ceramic Tile Floor
- S Solid Wood Refrigerator Door Inserts
- S Solid Wood Drawers
- S Corian® Dinette Table with Extension and 4 Chairs
- O Booth Dinette w/Corian® Table

BATH

- S Corian® Lavy Top with Porcelain Bowl
- S Solid Wood Raised-Panel Bath Doors
- S Deluxe Medicine Cabinet
- S Deluxe Fiberglass Molded Shower Enclosure
- O Shower w/Fold Down Seat (DVS Only)
- S Ceramic Tile Floor
- S Skylight in Shower

BEDROOM

- S Solid Wood Raised-Panel Bedroom Doors
- S Sealy® Innerspring Mattress 60" x 80"
- O California King Bed 72" x 84"

- S Reversible Bed Comforter with Shams and Throw Pillows (3)
- S Day/Night Pleated Shades
- S Central Electrical Panel 120V/12V/AC/DC
- S Corian® Nightstand Tops

INTERIOR

- S Entry Floor Lighting
- S 12 Volt Fluorescent Lighting
- S 12 Volt Halogen Lighting
- S Solid Wood Framed Mirror Headboard (DVS Only)
- S TV Antenna with 2 Jacks
- S TV Cable Ready
- S Alpine Oak or Walnut Cabinetry
- S Solid Wood Raised-Panel Cabinet Doors
- S Non-Skid Cabinet Shelves
- S Rain Sensor Power Roof Vents with 3-Speed Fan
- S Deluxe Soft Acoustic Ceiling
- S Secondary Phone Jack
- S Beveled Glass Mirrors
- S Cedar-Lined Wardrobe
- S Custom Decors (4 Interiors)
- O Pleated Shades (Living Area & Dinette)
- O Villa® Leather Living Room, Sleeper Sofa, J-Love Seat, Driver, Passenger Seats
- O Villa® Leather Queen Seat
- S Deluxe Wall-To-Wall Carpeting (Bedroom and Living Areas)
- S Micro Mini Blinds
- S Lambrequin Window Treatments Throughout
- O Flexsteel® Leather Recliner with Corian® Inlay Desk
- S Front Windshield Privacy Curtain
- S 2 Sofa Decor Pillows
- S 70" Fabric J-Love Seat by Flexsteel® w/1 drawer
- O 70" Leather Love Seat by Flexsteel®
- O 70" Leather J-Love Seat by Flexsteel® w/1 drawer
- S 76" Fabric Magic Bed Sofa by Flexsteel® (DAF Only)
- O 76" Leather Magic Bed Sofa by Flexsteel® (DAF Only)
- S 72" Fabric Magic Bed Sofa by Flexsteel® (DVS Only)
- O 72" Leather Magic Bed Sofa by Flexsteel® (DVS Only)
- S Deluxe Drawer Guides w/Travel Locks
- S Wardrobe Light
- O Flexsteel® Leather Magic Bed/J-Love Seat
- O Flexsteel® Leather Love Seat/J-Sleeper Sofa (DAF Only)
- O Flexsteel® Leather Buddy Seat
- S Electric TV Lift
- S Entry Step Switch and Disconnects at Entry Wall
- O Villa® Leather Recliner, Sleeper Sofa, Driver, Passenger Seats, and Desk w/Corian® Inlay

STANDARD & OPTIONAL FEATURES

AUTOMOTIVE

- S Engine—Cummins® C.8.3 Liter, 330 HP ISC Diesel
- S Transmission—Allison® MD-3060 6-Speed Automatic
- O Spartan® Mountain Master Chassis
- S Independent Front Suspension w/45° Steering Angle
- S Curved Windshield (Tint Band)
- S Single Motor Windshield Wiper System
- S Intermittent Wipers
- S Tilt/Telescoping Steering Wheel
- S Double Swivel Visors with Extensions
- S Back Lighted Instrument Panel
- S Driver/Passenger Wood Drink Tray
- S (4) 6 Volt Battery 217 Amp Auxiliary Batteries
- S (2) 12 Volt Batteries 2000 CCA
- S Electronic Battery Control Center
- S Polyethylene Battery Trays
- S Undercoating
- S 4 Cast Aluminum Wheels
- S Battery Disconnects
- S Nippondenso Climate Control System
- S Trailer Hitch 10,000 lb. Capacity
- S Cruise Control
- S Remote Auxiliary Start System
- S Auxiliary Fog Lights
- S Dash Fans
- S Radial Tires
- S 3-Point Leveling Jacks
- S Power Driver Window
- S Steel Surface on Front Bulkhead/Engine Frame
- S 6-Way Power Driver/Passenger Seats—Leather
- S Sony® Rear Vision System with Audio
- S Sony® AM/FM Cassette and CD Changer (10 Pack)
- S Sound Insulation in Subfloors, Front and Rear
- S CB Radio Ready
- S Heated Mirrors with Remote Adjustment
- S Mud Flaps
- S Underhood Utility Light—Front and Rear
- S Air Horns
- S I.C.C. Light Switch
- O Hand-Held CB
- O Manual Air Dump Override Switch
- S Driver/Passenger Map Lights
- S Full Air Brakes with Automatic Slack Adjusters
- S Air Ride Suspension w/Bilstein® Shocks
- S Pneumatic Pop-Up Stepwell Cover
- S ABS Brakes
- S PAC Brake
- S Full Instrumentation/Analog
- S Auxiliary 12V Dash Receptacle
- S Large VDO Dash Gauges
- S Automotive Safety Dash (w/TV)

STRUCTURAL

- S Stacked Rail Chassis Frame
- S Vacubond Floor
- S Vacubond Walls with Laid-up Fiberglass
- S Steel Reinforced Sidewall and Ceiling Construction
- S Steel Outriggers on Chassis
- S Heated Water and Holding Tank Compartments
- S Vacubond Insulated Storage Areas

EXTERIOR

- S Fresh Water Hose
- S Dual Holding Tank Sani-Flush System
- S Full Fiberglass Front and Rear Caps
- S Domed Rubber Roof with Radius Corners
- S Fiberglass Front and Rear Quarter Panels
- O Two-Piece Rear Ladder
- S Halogen Headlights
- S Spotlight with Remote Control
- S Stainless Steel Front and Rear Bumpers
- S 42 Gallon Floor Mounted LPG Tank
- S Tank Level Monitor
- S Exterior Convenience Light at Dump Valves
- S Exterior Graphics (4 Colors)
- S Patio Awning 20'
- S 12' RS Living Area Awning
- S 5' RS/DS Bedroom Area Awning (2)
- S Solar Charging Panel
- S 50 Amp Service 120 Volt Power Cord
- S Power Single Entry Step
- S 29" Front Entry Door with Dead Bolt
- S Deluxe Entry Handles
- S Exterior Flip-Up Storage Doors
- S Locking Exterior Storage Compartments
- S Luggage Compartment Lights
- S Protective Bra Cover
- O 54" Compartment Slide-Out Tray
- S Docking Lights—2 Each Front and Rear
- S Awning Rail Molding RS/DS
- O Exterior Entertainment Center
- S Exterior Rinse Hose with Soap Dispenser and Paper Towel Holders
- S Fresh Water Fill
- S Water Pump Switch
- S 50' Air Service Line
- S Dual Pane Windows
- O Screen Door
- O Digital Satellite System with Automatic Lift
- O 12' D/S Awning

APPLIANCES

- S Dual 13,500 BTU Roof A/C
- S Onan® 7.5 kw Quiet Diesel Generator
- S Dual Furnaces with Thermostat and Auto Ignition BTU (35M Each)
- S Park Telephone Ready
- S Rigid Furnace Ducting System

- S Patio Receptacles
- S LP/120/12 Volt Large Double Door Refrigerator
- O LP/120 Volt Side-By-Side Refrigerator
- S 3-Burner Deluxe Range with Large Oven and Corian® Cover
- O Kitchen Aid® 2-Burner Recessed Cooktop
- S Convection Microwave Oven w/Built-in Power Range Hood w/Fan and Light
- S Ice Maker (DAF Only)
- S Water Filter
- S Washer/Dryer
- S Motorized Elevating 20" Color TV (Front) with Remote
- S 13" Color TV (Rear) with Remote
- S VHS-VCR
- S **heart interface** —Source Manager 20 2000 Watt Continuous Inverter 100 Amp Converter, Intelligent Transfer Switching
- S Multi-Point Water Pump Switching
- O LP/120 Volt Side-By-Side Refrigerator w/Ice Maker (DVS Only)
- S LP/120/12 Volt Large Double Door Refrigerator w/Ice Maker (DVS Only)
- S Residential China Bowl Toilet with Flush
- S D.S.I. 10 Gallon Water Heater LP/110V
- S Smoke Detector
- S Fire Extinguisher
- S LPG Leak Detector with Automatic Shut-Off
- S 12 Volt Carbon Monoxide Detector

GALLEY

- S Corian® Sink Covers
- S Corian® Galley Top
- S Extra Large Stainless Steel Kitchen Sink, Double Bowl
- S Silverware Tray
- S Single Lever Galley Faucet
- S Ceramic Tile Floor
- S Solid Wood Refrigerator Door Inserts
- S Solid Wood Drawers
- S Corian® Dinette Table with Extension and 4 Chairs
- O Booth Dinette w/Corian® Table

BATH

- S Corian® Lavy Top with Porcelain Bowl
- S Solid Wood Raised-Panel Bath Doors
- S Deluxe Medicine Cabinet
- S Deluxe Fiberglass Molded Shower Enclosure
- O Shower w/Fold Down Seat (DVS Only)
- S Ceramic Tile Floor
- S Skylight in Shower

BEDROOM

- S Solid Wood Raised-Panel Bedroom Doors
- S Sealy® Innerspring Mattress 60" x 80"
- O California King Bed 72" x 84"

- S Reversible Bed Comforter with Shams and Throw Pillows (3)
- S Day/Night Pleated Shades
- S Central Electrical Panel 120V/12V/AC/DC
- S Corian® Nightstand Tops

INTERIOR

- S Entry Floor Lighting
- S 12 Volt Fluorescent Lighting
- S 12 Volt Halogen Lighting
- S Solid Wood Framed Mirror Headboard (DVS Only)
- S TV Antenna with 2 Jacks
- S TV Cable Ready
- S Alpine Oak or Walnut Cabinetry
- S Solid Wood Raised-Panel Cabinet Doors
- S Non-Skid Cabinet Shelves
- S Rain Sensor Power Roof Vents with 3-Speed Fan
- S Deluxe Soft Acoustic Ceiling
- S Secondary Phone Jack
- S Beveled Glass Mirrors
- S Cedar-Lined Wardrobe
- S Custom Decors (4 Interiors)
- O Pleated Shades (Living Area & Dinette)
- O Villa® Leather Living Room, Sleeper Sofa, J-Love Seat, Driver, Passenger Seats
- O Villa® Leather Queen Seat
- S Deluxe Wall-To-Wall Carpeting (Bedroom and Living Areas)
- S Micro Mini Blinds
- S Lambrequin Window Treatments Throughout
- O Flexsteel® Leather Recliner with Corian® Inlay Desk
- S Front Windshield Privacy Curtain
- S 2 Sofa Decor Pillows
- S 70" Fabric J-Love Seat by Flexsteel® w/1 drawer
- O 70" Leather Love Seat by Flexsteel®
- O 70" Leather J-Love Seat by Flexsteel® w/1 drawer
- S 76" Fabric Magic Bed Sofa by Flexsteel® (DAF Only)
- O 76" Leather Magic Bed Sofa by Flexsteel® (DAF Only)
- S 72" Fabric Magic Bed Sofa by Flexsteel® (DVS Only)
- O 72" Leather Magic Bed Sofa by Flexsteel® (DVS Only)
- S Deluxe Drawer Guides w/Travel Locks
- S Wardrobe Light
- O Flexsteel® Leather Magic Bed/J-Love Seat
- O Flexsteel® Leather Love Seat/J-Sleeper Sofa (DAF Only)
- O Flexsteel® Leather Buddy Seat
- S Electric TV Lift
- S Entry Step Switch and Disconnects at Entry Wall
- O Villa® Leather Recliner, Sleeper Sofa, Driver, Passenger Seats, and Desk w/Corian® Inlay

That's an amazing journey you have mapped out there.

Mind if we come along?

Well. Not literally. We know our owners too well for that.

But we want you to know that from the moment you pull your American Dream off the lot, your American Coach service and warranty staff is with you in spirit — and in the form of this 1-Year/3-Year RV OWNERCARE service and warranty card.

Just call the toll-free number on the back for 24-hour access to expert response to any questions or problems you may have with your coach. And should you be unable to get to one of our numerous dealer service locations, we'll gladly hop on a plane and find you, wherever you are.



We want you to live out your dream, secure in the knowledge that your motorcoach is supported at all times by the strength of a partnership time cannot diminish. When you pass through Northern Indiana, we want you to stop off at our Decatur headquarters. Let us entertain you while we adjust your wiper blades or fix a squeaky door.

Just remember, we're here for you. Whether you need roadside assistance, warranty work, or some help figuring out your satellite dish, you can count on your friends at American Coach to make everything right.

American Coach

THE ROAD BECKONS. AMERICA CALLS.

Fleetwood Motorhomes of Indiana, Inc. • Plant #44 • 1031 U.S. 224 East • Decatur, Indiana 46733-5006 • (219) 728-2121 (800) 648-6582

PLEASE READ: Product information and photography in this brochure were as accurate as possible at the time of publication. Subsequent refinements may be evident in the actual product. Prices and specifications are subject to change without notice. Selected decorator items shown in the photographs are not part of the product unless specified. All liquid capacities, dimensions, and weights are nominal. Warranty valid only on product sold in the U.S.A. and Canada.

FLEETWOOD RV

That's an amazing journey you have mapped out there.

Mind if we come along?

Well. Not literally. We know our owners too well for that.

But we want you to know that from the moment you pull your American Dream off the lot, your American Coach service and warranty staff is with you in spirit — and in the form of this 1-Year/3-Year RV OWNERCARE service and warranty card.

Just call the toll-free number on the back for 24-hour access to expert response to any questions or problems you may have with your coach. And should you be unable to get to one of our numerous dealer service locations, we'll gladly hop on a plane and find you, wherever you are.



We want you to live out your dream, secure in the knowledge that your motorcoach is supported at all times by the strength of a partnership time cannot diminish. When you pass through Northern Indiana, we want you to stop off at our Decatur headquarters. Let us entertain you while we adjust your wiper blades or fix a squeaky door.

Just remember, we're here for you. Whether you need roadside assistance, warranty work, or some help figuring out your satellite dish, you can count on your friends at American Coach to make everything right.

American Coach

THE ROAD BECKONS. AMERICA CALLS.

Fleetwood Motorhomes of Indiana, Inc. • Plant #44 • 1031 U.S. 224 East • Decatur, Indiana 46733-5006 • (219) 728-2121 (800) 648-6582

PLEASE READ: Product information and photography in this brochure were as accurate as possible at the time of publication. Subsequent refinements may be evident in the actual product. Prices and specifications are subject to change without notice. Selected decorator items shown in the photographs are not part of the product unless specified. All liquid capacities, dimensions, and weights are nominal. Warranty valid only on product sold in the U.S.A. and Canada.

FLEETWOOD. RV