

THE AMERICAN COACH WAY OF LIFE.
TAKE A STAND FOR FREEDOM.

Well, what are you waiting for? Retirement? Lottery winnings? The kids to move out of the house? Maybe it's time for you to move out instead.

Maybe it's time, once and for all, to take a stand for *you*. The places you want to go. The things you want to do. The oceans you want to swim.

Of course, we realize you probably haven't given a lot of thought to such things since you were a little kid yourself. But by now, you've paid your adult dues. And it's time to reclaim that freedom you lost somewhere between hanging on a rope swing and landing your first job.

It's time for American Coach. Perhaps more than any luxury coach manufacturer in the world, we understand how you feel. Our motorcoaches are proof of that.



They're the type that can tackle the Grand Tetons one minute and tear up the passing lane the next. Safely. Dependably. And with the kind of worry-free abandon that comes from knowing the road's best service and warranty package is backing you up.

You see, at American Coach, we realize our motorcoaches aren't the first RVs most people buy. They're the ones you dream about, envy, and work toward all your life. That's why they have to be as extraordinary as we can make them.

Yes, we know you've waited a long time to be a kid again. Just make sure you buy a motorcoach that can handle it.

The 1999 American Tradition. Come on, let's go. You've got a lot of sand castles to build.



THE AMERICAN EAGLE 1999

EMBRACE YOUR OWN AMERICAN TRADITION

American Coach

THE ROAD BECKONS. AMERICA CALLS.

*Fleetwood Motorhomes of Indiana, Inc. • Plant #44 • 1031 U.S. 224 East • Decatur, Indiana 46733-5006
(219) 728-2121 (800) 648-6582*

PLEASE READ: Product information and photography in this brochure were as accurate as possible at the time of publication. Subsequent refinements may be evident in the actual product. Prices and specifications are subject to change without notice. Selected decorator items shown in the photographs are not part of the product unless specified. All liquid capacities, dimensions, and weights are nominal. Warranty valid only on product sold in the U.S.A. and Canada.

FLEETWOOD RV

THE AMERICAN COACH WAY OF LIFE.
TAKE A STAND FOR FREEDOM.

Well, what are you waiting for? Retirement? Lottery winnings? The kids to move out of the house? Maybe it's time for you to move out instead.

Maybe it's time, once and for all, to take a stand for *you*. The places you want to go. The things you want to do. The oceans you want to swim.

Of course, we realize you probably haven't given a lot of thought to such things since you were a little kid yourself. But by now, you've paid your adult dues. And it's time to reclaim that freedom you lost somewhere between hanging on a rope swing and landing your first job.

It's time for American Coach. Perhaps more than any luxury coach manufacturer in the world, we understand how you feel. Our motorcoaches are proof of that.



They're the type that can tackle the Grand Tetons one minute and tear up the passing lane the next. Safely. Dependably. And with the kind of worry-free abandon that comes from knowing the road's best service and warranty package is backing you up.

You see, at American Coach, we realize our motorcoaches aren't the first RVs most people buy. They're the ones you dream about, envy, and work toward all your life. That's why they have to be as extraordinary as we can make them.

Yes, we know you've waited a long time to be a kid again. Just make sure you buy a motorcoach that can handle it.

The 1999 American Tradition. Come on, let's go. You've got a lot of sand castles to build.



THE AMERICAN EAGLE 1999

EMBRACE YOUR OWN AMERICAN TRADITION

American Coach

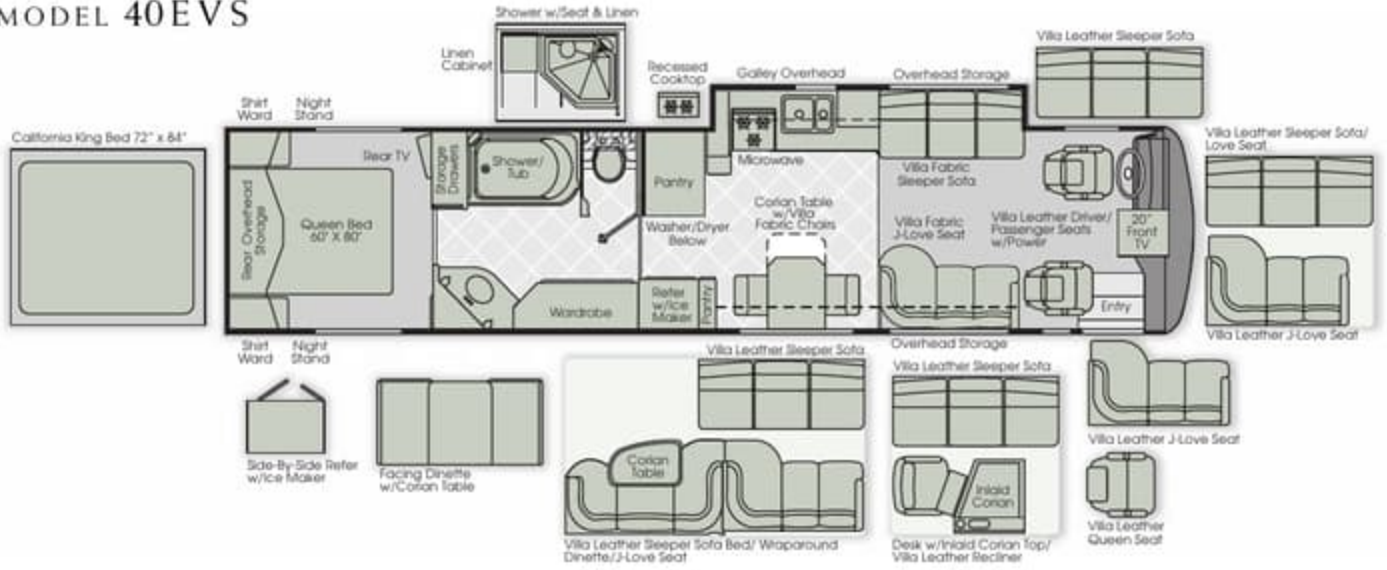
THE ROAD BECKONS. AMERICA CALLS.

*Fleetwood Motorhomes of Indiana, Inc. • Plant #44 • 1031 U.S. 224 East • Decatur, Indiana 46733-5006
(219) 728-2121 (800) 648-6582*

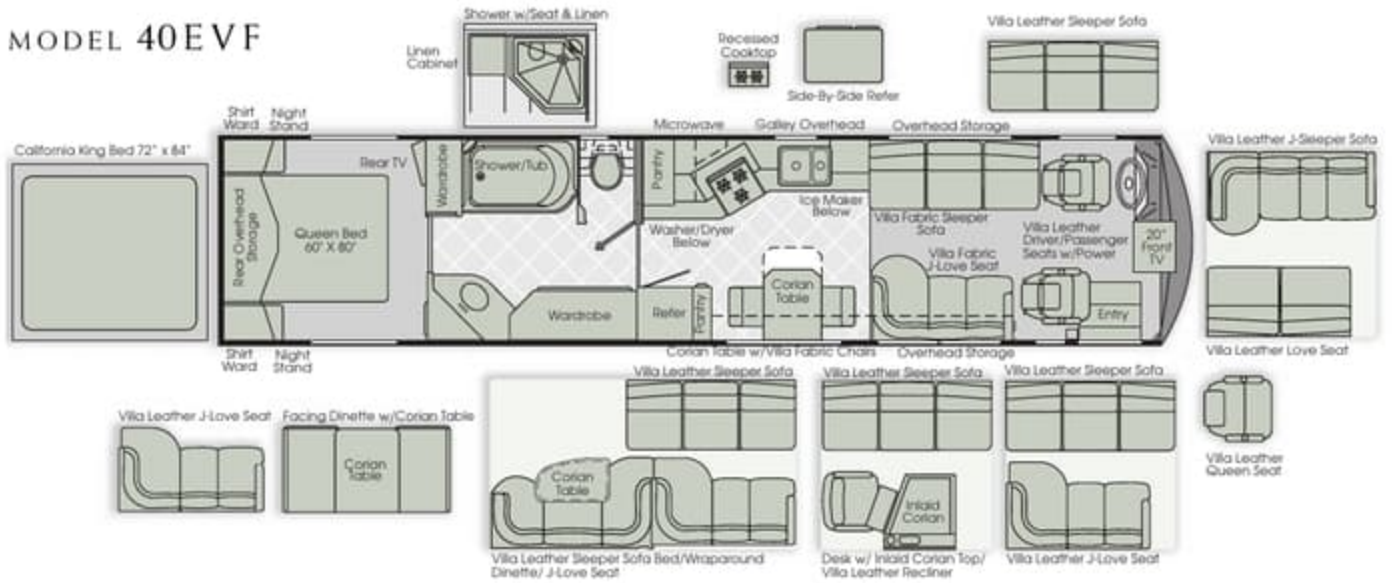
PLEASE READ: Product information and photography in this brochure were as accurate as possible at the time of publication. Subsequent refinements may be evident in the actual product. Prices and specifications are subject to change without notice. Selected decorator items shown in the photographs are not part of the product unless specified. All liquid capacities, dimensions, and weights are nominal. Warranty valid only on product sold in the U.S.A. and Canada.

FLEETWOOD RV

MODEL 40EVS



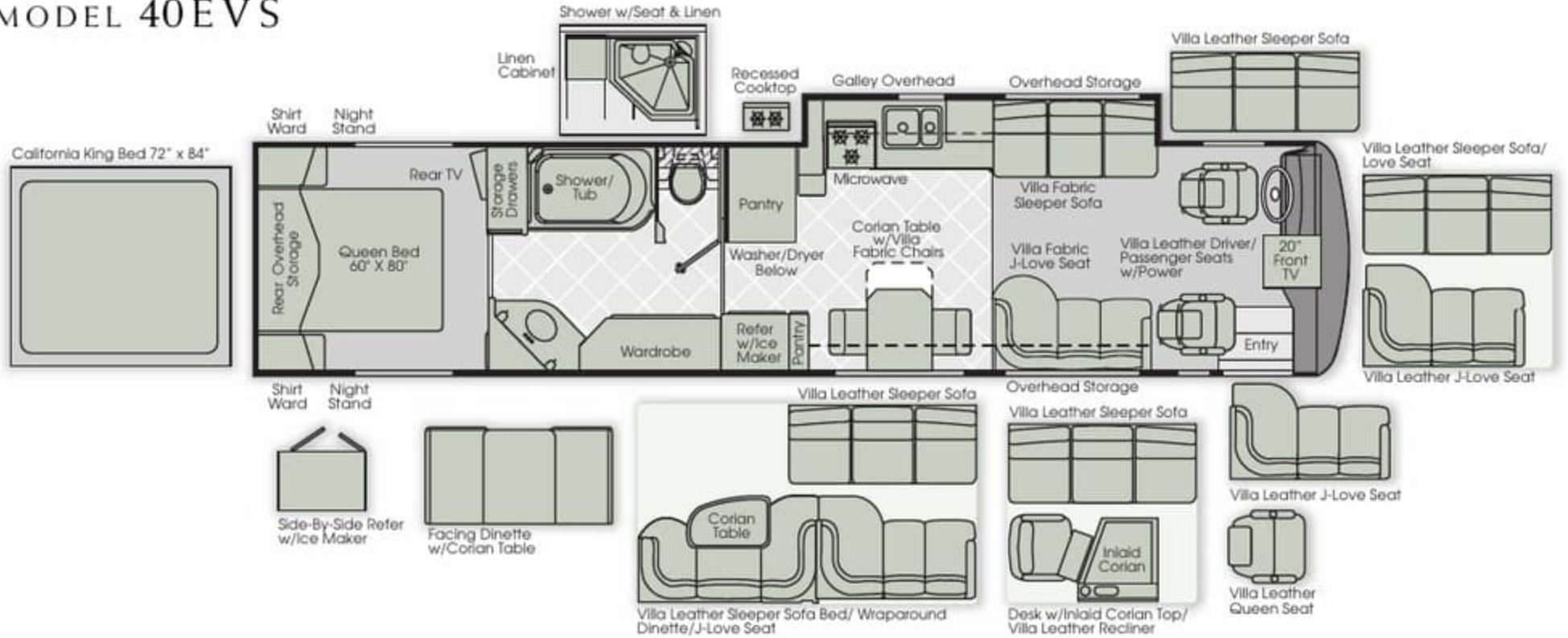
MODEL 40EVF



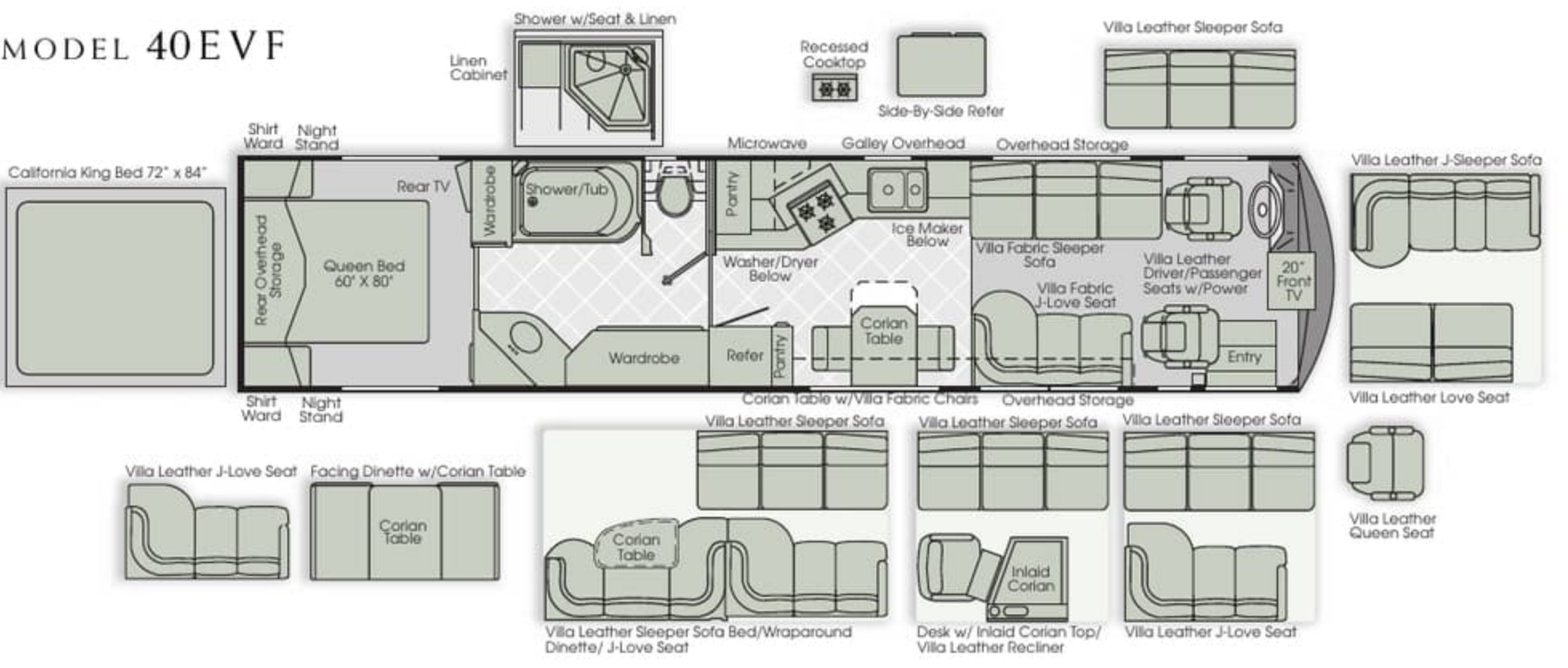
MODEL 40ENS



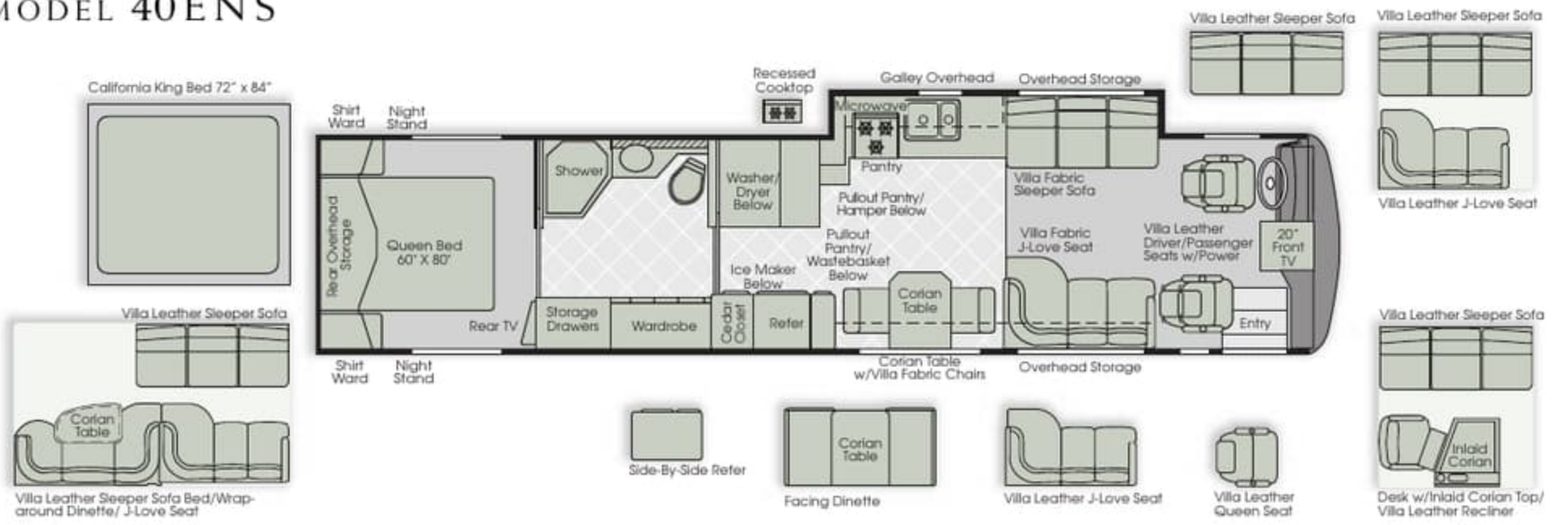
MODEL 40EVS



MODEL 40EVF



MODEL 40ENS



STANDARD & OPTIONAL FEATURES

AUTOMOTIVE

- S Engine—Cummins® C.8.3 Liter, 350 HP ISC Diesel
- S Transmission—Allison® MD-3066, 6-Speed Automatic
- S Spartan® Mountain Master Chassis
- S Independent Front Suspension w/45° Steering Angle
- S Air Ride Suspension w/Bilstein® Shocks
- S Undercoating
- S Auxiliary Fog Lamps
- S Cast Aluminum Wheels (4)
- S ABS Brakes
- S Radial Tires
- S 3-Point Leveling Jacks
- S Oversized VDO Gauges
- S Nippondenso Climate Control System
- S Power Driver Window
- S Intermittent Wipers (Single Motors)
- S 6-Way Power Driver/Passenger Seats—Leather
- S Sony® Rear Vision System with Audio
- S Sony® AM/FM Cassette
- S Sony® 10 Pack Disc Player
- S Heated Mirrors with Remote Adjustment
- S Windshield Tint Band
- S Battery Disconnects
- S Trailer Hitch 10,000 Lbs. Capacity
- S Cruise Control
- S Air Horns
- S I.C.C. Light Switch
- S 2-Speed Dash Fans
- S Driver/Passenger Map Lights
- S Automotive Safety Dash (w/TV)
- S Corian® Drink Holder w/Logo
- S CB Radio Ready
- S PAC Brake
- S Auxiliary 12V Dash Receptacle
- S Electronic Battery Control Center
- S Tilt/Telescope Steering Wheel
- S Full Air Brakes w/Automatic Slack Adjusters
- S Underhood Utility Light, Front and Rear
- S Tinted Acrylic Sun Visors
- S Cab Side Pull Down Shades
- S Sound Insulation in Subfloors, Front and Rear
- S Steel Surface on Front Bulkhead/Engine Frame
- S Pneumatic Pop-Up Stepwell Cover
- S Back Lighted Instrument Panel
- S Remote Auxiliary Start System
- S (4) 6V Battery 217 Amp Auxiliary Batteries
- S (2) 12 Volt Battery 2000 CCA

- O Hand-Held CB
- O Manual Air Dump Override Switch

STRUCTURAL

- S Stacked Rail Chassis Frame
- S Vacubond Floor
- S Steel Reinforced Sidewalls and Ceiling
- S Electric Slide-Out (Model 40EVS, 40ENS Only)
- S Steel Outriggers on Chassis
- S Vacubond Walls with Laid-up Fiberglass
- S Heated Water & Holding Tank Compartments
- S Vacubond Insulated Storage Compartments

EXTERIOR

- S 50' Air Service Line
- S Detachable 50 Amp Power Cord
- S Full Fiberglass Front & Rear Caps
- S Gelcoat Fiberglass
- S One-Piece Domed Fiberglass Roof
- S Stainless Steel Bumpers—Front & Rear
- O Two-Piece Rear Ladder
- O Norcold® Freezer/Refrigerator
- S Polyethylene Battery Trays
- S Hydraulic Genset Slide-Out
- S Power Entry Single Step
- S 29" Wide Entry Door w/Deadbolt
- S Dual Holding Tank Sani-Flush System
- S Locking Exterior Storage Compartments
- S (4) Exterior Graphics
- S Dual Pane Windows
- S 20' Patio Awning
- S 5' & 12' Window Awnings
- S Awning Rail Molding RS/DS
- S Mud Flaps—Front & Rear
- S Protective Bra Cover w/Logo
- S Stainless Steel Kickplate Under Entry Door
- S Exterior Rinse Hose with Soap Dispenser & Paper Towel Holder
- S Deluxe Entry Handle
- S Luggage Compartment Lights
- S Docking Lights—2 Each Front & Rear
- S Tank Level Monitor
- O Digital Satellite System with Automatic Lift
- S Fiberglass Front Quarter Panels/Wheel Trims
- S Exterior Convenience Light at Dump Valves
- S Exterior Storage Doors w/Pantograph Hinge
- O Screen Door
- S Water Pump Switch
- S Long Handled Squeegee

- S Holding Tanks with Low Point Drain Valves
- S One 54" Slide-Out Storage Tray
- O Additional 54" Slide-Out Tray
- O 36" Slide-Out Tray
- O "Eagle" Graphics
- O Exterior Entertainment Center
- S Fresh Water Hose
- S Fresh Water Fill
- S Floor Mounted LPG Tank, 40.3 Gallon
- O 12' D/S Awning

APPLIANCES

- S Onan® 7.5 kw Quiet Diesel Generator
- S Dometic® 12 Volt LP/Electric Large Door Refrigerator
- O 120V/LP Dometic® Side-By-Side Refrigerator
- O 120V/LP Dometic® Side-By-Side Refrigerator w/Ice Maker (EVS Only)
- S Deluxe Range with Large Oven
- O Kitchen Aid® 2-Burner Recessed Cooktop
- S Microwave/Convection Oven with Built-in Range Hood with Light/Fan
- S Ice Maker (ENS, EVF Only)
- S Water Filter
- S 50 Amp 120 Volt Power Cord
- S Motorized Elevating 20" Sony® Trinitron Color TV (Front) with Remote
- S 13" Sony® Trinitron Color TV (Rear) with Remote
- S Sony® VHS—4 Head Hi-Fi Stereo VCR
- S —Source Manager 20
2000 Watt Continuous Inverter, 100 Amp Converter, Intelligent Transfer Switching
- O —Source Manager 25
2500 Watt Continuous Inverter, 130 Amp Converter, Intelligent Transfer Switching
- S Multi-Point Water Pump Switching
- S Residential China Bowl Flush Toilet
- S D.S.I. 10 Gallon Water Heater LP/120V
- S LPG Leak Detector w/Automatic Shut-Off
- S 12 Volt Carbon Monoxide Detector
- S Smoke Detector
- S Fire Extinguisher
- S Solar Charging Panel
- S Dual Roof A/C — 13,500 BTU (Each)
- S Dual Furnaces with Thermostat & Auto Ignition BTU (35M each)
- S Park Telephone Ready
- S Rigid Furnace Ducting System
- S Washer/Dryer (Vented)

STANDARD & OPTIONAL FEATURES

AUTOMOTIVE

- S Engine—Cummins® C.8.3 Liter, 350 HP ISC Diesel
- S Transmission—Allison® MD-3066, 6-Speed Automatic
- S Spartan® Mountain Master Chassis
- S Independent Front Suspension w/45° Steering Angle
- S Air Ride Suspension w/Bilstein® Shocks
- S Undercoating
- S Auxiliary Fog Lamps
- S Cast Aluminum Wheels (4)
- S ABS Brakes
- S Radial Tires
- S 3-Point Leveling Jacks
- S Oversized VDO Gauges
- S Nippondenso Climate Control System
- S Power Driver Window
- S Intermittent Wipers (Single Motors)
- S 6-Way Power Driver/Passenger Seats—Leather
- S Sony® Rear Vision System with Audio
- S Sony® AM/FM Cassette
- S Sony® 10 Pack Disc Player
- S Heated Mirrors with Remote Adjustment
- S Windshield Tint Band
- S Battery Disconnects
- S Trailer Hitch 10,000 Lbs. Capacity
- S Cruise Control
- S Air Horns
- S I.C.C. Light Switch
- S 2-Speed Dash Fans
- S Driver/Passenger Map Lights
- S Automotive Safety Dash (w/TV)
- S Corian® Drink Holder w/Logo
- S CB Radio Ready
- S PAC Brake
- S Auxiliary 12V Dash Receptacle
- S Electronic Battery Control Center
- S Tilt/Telescope Steering Wheel
- S Full Air Brakes w/Automatic Slack Adjusters
- S Underhood Utility Light, Front and Rear
- S Tinted Acrylic Sun Visors
- S Cab Side Pull Down Shades
- S Sound Insulation in Subfloors, Front and Rear
- S Steel Surface on Front Bulkhead/Engine Frame
- S Pneumatic Pop-Up Stepwell Cover
- S Back Lighted Instrument Panel
- S Remote Auxiliary Start System
- S (4) 6V Battery 217 Amp Auxiliary Batteries
- S (2) 12 Volt Battery 2000 CCA

- O Hand-Held CB
- O Manual Air Dump Override Switch

STRUCTURAL

- S Stacked Rail Chassis Frame
- S Vacubond Floor
- S Steel Reinforced Sidewalls and Ceiling
- S Electric Slide-Out (Model 40EVS, 40ENS Only)
- S Steel Outriggers on Chassis
- S Vacubond Walls with Laid-up Fiberglass
- S Heated Water & Holding Tank Compartments
- S Vacubond Insulated Storage Compartments

EXTERIOR

- S 50' Air Service Line
- S Detachable 50 Amp Power Cord
- S Full Fiberglass Front & Rear Caps
- S Gelcoat Fiberglass
- S One-Piece Domed Fiberglass Roof
- S Stainless Steel Bumpers—Front & Rear
- O Two-Piece Rear Ladder
- O Norcold® Freezer/Refrigerator
- S Polyethylene Battery Trays
- S Hydraulic Genset Slide-Out
- S Power Entry Single Step
- S 29" Wide Entry Door w/Deadbolt
- S Dual Holding Tank Sani-Flush System
- S Locking Exterior Storage Compartments
- S (4) Exterior Graphics
- S Dual Pane Windows
- S 20' Patio Awning
- S 5' & 12' Window Awnings
- S Awning Rail Molding RS/DS
- S Mud Flaps—Front & Rear
- S Protective Bra Cover w/Logo
- S Stainless Steel Kickplate Under Entry Door
- S Exterior Rinse Hose with Soap Dispenser & Paper Towel Holder
- S Deluxe Entry Handle
- S Luggage Compartment Lights
- S Docking Lights—2 Each Front & Rear
- S Tank Level Monitor
- O Digital Satellite System with Automatic Lift
- S Fiberglass Front Quarter Panels/Wheel Trims
- S Exterior Convenience Light at Dump Valves
- S Exterior Storage Doors w/Pantograph Hinge
- O Screen Door
- S Water Pump Switch
- S Long Handled Squeegee

- S Holding Tanks with Low Point Drain Valves
- S One 54" Slide-Out Storage Tray
- O Additional 54" Slide-Out Tray
- O 36" Slide-Out Tray
- O "Eagle" Graphics
- O Exterior Entertainment Center
- S Fresh Water Hose
- S Fresh Water Fill
- S Floor Mounted LPG Tank, 40.3 Gallon
- O 12' D/S Awning

APPLIANCES

- S Onan® 7.5 kw Quiet Diesel Generator
- S Dometic® 12 Volt LP/Electric Large Door Refrigerator
- O 120V/LP Dometic® Side-By-Side Refrigerator
- O 120V/LP Dometic® Side-By-Side Refrigerator w/Ice Maker (EVS Only)
- S Deluxe Range with Large Oven
- O Kitchen Aid® 2-Burner Recessed Cooktop
- S Microwave/Convection Oven with Built-in Range Hood with Light/Fan
- S Ice Maker (ENS, EVF Only)
- S Water Filter
- S 50 Amp 120 Volt Power Cord
- S Motorized Elevating 20" Sony® Trinitron Color TV (Front) with Remote
- S 13" Sony® Trinitron Color TV (Rear) with Remote
- S Sony® VHS—4 Head Hi-Fi Stereo VCR
- S —Source Manager 20
2000 Watt Continuous Inverter, 100 Amp Converter, Intelligent Transfer Switching
- O —Source Manager 25
2500 Watt Continuous Inverter, 130 Amp Converter, Intelligent Transfer Switching
- S Multi-Point Water Pump Switching
- S Residential China Bowl Flush Toilet
- S D.S.I. 10 Gallon Water Heater LP/120V
- S LPG Leak Detector w/Automatic Shut-Off
- S 12 Volt Carbon Monoxide Detector
- S Smoke Detector
- S Fire Extinguisher
- S Solar Charging Panel
- S Dual Roof A/C —13,500 BTU (Each)
- S Dual Furnaces with Thermostat & Auto Ignition BTU (35M each)
- S Park Telephone Ready
- S Rigid Furnace Ducting System
- S Washer/Dryer (Vented)

STANDARD & OPTIONAL FEATURES

<p style="text-align: center;">GALLEY</p> <p>S Silverware Tray</p> <p>S Corian® Dinette Table with Extension and 4 Chairs</p> <p>S Corian® Galley Top & Sink Covers</p> <p>S Extra Large Double Bowl Galley Sink</p> <p>S Moen® One Touch Galley Faucet</p> <p>S Solid Wood Refrigerator Door Inserts</p> <p>S Wood Drawers with Dovetail Joints</p> <p>S Pantry w/Slide-out Drawers and Adjustable Shelves (EVF, EVS Only)</p> <p>S Corian® Range Cover</p> <p>S 120V Outlet & Telephone Jack at Dinette</p> <p>S Corian® Wine Cabinet (EVF Only)</p> <p>S Large Galley Ceiling Light</p> <p>S Granirex Flooring</p> <p>S Slide-Out Pantry, Hamper, Wastebasket (ENS Only)</p> <p>O Booth Dinette</p>	<p>S Glass/Brass Shower Doors</p> <p style="text-align: center;">BEDROOM</p> <p>S Sealy® Innerspring Mattress 60" x 80"</p> <p>O California King Bed 72" x 84"</p> <p>S Key Locked Safe</p> <p>S Reversible Comforter with Pillow Shams/1 Bolster</p> <p>S Day/Night Pleated Shades</p> <p>S Two Decor Throw Pillows</p> <p>S Wallpaper w/Decorative Border</p> <p>S Solid Wood Raised Panel Bath/Bedroom Doors</p> <p>S Secondary Phone Jack</p> <p>S 120V/12V AC/DC Central Electrical Panel</p> <p>S Corian® Nightstand Tops</p> <p style="text-align: center;">INTERIOR</p> <p>S 12V Halogen Task Lighting</p> <p>S Solid Wood Magazine Rack/Passenger</p> <p>S Micro Mini Blinds</p> <p>S 12V Deluxe Lighting System</p> <p>S Rain Sensor Power Roof Vents w/3-Speed Fan</p> <p>S Entry Step Switch and Disconnects at Entry Wall</p> <p>S 79" Fabric Sleeper Sofa by Villa® (1) Drawer (EVF Only)</p> <p>S 72" Fabric Sleeper Sofa by Villa® (2) Drawers (EVS, ENS Only)</p> <p>S 70" Fabric J-Love Seat by Villa® (2) Drawers</p> <p>S Solid Wood Framed Mirror Headboard</p>	<p>S Two Decorative Sofa Pillows</p> <p>S Night Floor Lighting</p> <p>S TV Cable Ready</p> <p>O Leather Villa® Recliner with Corian® Inlay Desk/Sofa Bed</p> <p>S Deluxe Soft Acoustic Ceiling</p> <p>S Wall Mounted Black & Decker® Dustbuster</p> <p>S Custom Decors (4 Interiors)</p> <p>S Deluxe Wall-to-Wall Carpeting</p> <p>S Villa® Leather Driver/Passenger Seats</p> <p>O Villa® Leather Buddy Seat</p> <p>O Villa® Leather Sleeper Sofa, J-Love Seat</p> <p>O Villa® Leather J-Sleeper Sofa, Love Seat (EVF Only)</p> <p>O Wraparound Dinette Seat/J-Love Seat Ensemble</p> <p>O Villa® 70" Leather J-Love Seat with 2 Drawers</p> <p>S Lambrequin Window Treatments</p> <p>O Day/Night Shades (Living Room and Dinette)</p> <p>S Single Thermostat for Cooling and Heating</p> <p>S Alpine Oak or Walnut Wood Cabinetry</p> <p>S TV Antenna with 2 Jacks Included</p> <p>S Non-Skid Cabinet Shelves</p> <p>S Front Windshield Privacy Curtain</p> <p>S Cedar-Lined Wardrobe</p> <p>S Wardrobe Light</p> <p>S Beveled Glass Mirrors</p> <p>S Solid Core Raised Panel Oak/Walnut Cabinet Doors</p> <p>S Deluxe Drawer Guides w/Travel Locks</p>
<p style="text-align: center;">BATH</p> <p>S Skylight in Tub/Shower</p> <p>S Brass & Chrome Bath Accessories</p> <p>S Corian® Lavy Top with Corian® Sink</p> <p>S Deluxe Medicine Cabinet</p> <p>S Deluxe Fiberglass Molded Shower Enclosure</p> <p>O Shower w/ Fold-Down Seat (EVF, EVS Only)</p> <p>S Granirex Flooring</p> <p>S Corian® Decorative Soap Dish (EVF, EVS Only)</p>		

EAGLE SPECIFICATIONS

WEIGHTS (POUNDS)

	40ENS	40EVF	40EVS
GVWR	31,000	31,000	31,000
GCWR	41,000	41,000	41,000
GAWR (front)	12,000	12,000	12,000
GAWR (rear)	19,000	19,000	19,000
UVW	26,600	26,000	26,600

MEASUREMENTS

	40ENS	40EVF	40EVS
Wheelbase	266"	266"	266"
Overall Length	40' 1-1/2"	40' 1-1/2"	40' 1-1/2"
Overall Height w/AC	12'	12'	12'
Interior Height (max.)	79"	79"	79"
Interior Width (max.)	96"	96"	96"
Exterior Width (max.)	102"	102"	102"

TANK & LIQUID CAPACITIES (GALLONS)

	40ENS	40EVF	40EVS
Grey Water Tank	60	60	60
(Waste) Black Water Tank	40	40	40
Fresh Water Tank	100	100	100
L.P. Tank	40.3	40.3	40.3
Water Heater	10	10	10
Fuel Tank w/Dual Side Fills	150	150	150

CHASSIS

Frame	Spartan® Mountain Master Stacked Rail
Engine	Cummins® C.8.3L/350 HP ISC
Torque	1050 @ 1400 RPM
Cubic Inch	504.5
Transmission	Allison® MD-3066, 6-Speed World w/Electronic Shifter
Alternator Amps	160 Amp Leece Neville
Tires	G159 22.5" Low Profile Highway Radial

STANDARD & OPTIONAL FEATURES

<p style="text-align: center;">GALLEY</p> <p>S Silverware Tray</p> <p>S Corian® Dinette Table with Extension and 4 Chairs</p> <p>S Corian® Galley Top & Sink Covers</p> <p>S Extra Large Double Bowl Galley Sink</p> <p>S Moen® One Touch Galley Faucet</p> <p>S Solid Wood Refrigerator Door Inserts</p> <p>S Wood Drawers with Dovetail Joints</p> <p>S Pantry w/Slide-out Drawers and Adjustable Shelves (EVF, EVS Only)</p> <p>S Corian® Range Cover</p> <p>S 120V Outlet & Telephone Jack at Dinette</p> <p>S Corian® Wine Cabinet (EVF Only)</p> <p>S Large Galley Ceiling Light</p> <p>S Granirex Flooring</p> <p>S Slide-Out Pantry, Hamper, Wastebasket (ENS Only)</p> <p>O Booth Dinette</p>	<p>S Glass/Brass Shower Doors</p> <p style="text-align: center;">BEDROOM</p> <p>S Sealy® Innerspring Mattress 60" x 80"</p> <p>O California King Bed 72" x 84"</p> <p>S Key Locked Safe</p> <p>S Reversible Comforter with Pillow Shams/1 Bolster</p> <p>S Day/Night Pleated Shades</p> <p>S Two Decor Throw Pillows</p> <p>S Wallpaper w/Decorative Border</p> <p>S Solid Wood Raised Panel Bath/Bedroom Doors</p> <p>S Secondary Phone Jack</p> <p>S 120V/12V AC/DC Central Electrical Panel</p> <p>S Corian® Nightstand Tops</p> <p style="text-align: center;">INTERIOR</p> <p>S 12V Halogen Task Lighting</p> <p>S Solid Wood Magazine Rack/Passenger</p> <p>S Micro Mini Blinds</p> <p>S 12V Deluxe Lighting System</p> <p>S Rain Sensor Power Roof Vents w/3-Speed Fan</p> <p>S Entry Step Switch and Disconnects at Entry Wall</p> <p>S 79" Fabric Sleeper Sofa by Villa® (1) Drawer (EVF Only)</p> <p>S 72" Fabric Sleeper Sofa by Villa® (2) Drawers (EVS, ENS Only)</p> <p>S 70" Fabric J-Love Seat by Villa® (2) Drawers</p> <p>S Solid Wood Framed Mirror Headboard</p>	<p>S Two Decorative Sofa Pillows</p> <p>S Night Floor Lighting</p> <p>S TV Cable Ready</p> <p>O Leather Villa® Recliner with Corian® Inlay Desk/Sofa Bed</p> <p>S Deluxe Soft Acoustic Ceiling</p> <p>S Wall Mounted Black & Decker® Dustbuster</p> <p>S Custom Decors (4 Interiors)</p> <p>S Deluxe Wall-to-Wall Carpeting</p> <p>S Villa® Leather Driver/Passenger Seats</p> <p>O Villa® Leather Buddy Seat</p> <p>O Villa® Leather Sleeper Sofa, J-Love Seat</p> <p>O Villa® Leather J-Sleeper Sofa, Love Seat (EVF Only)</p> <p>O Wraparound Dinette Seat/J-Love Seat Ensemble</p> <p>O Villa® 70" Leather J-Love Seat with 2 Drawers</p> <p>S Lambrequin Window Treatments</p> <p>O Day/Night Shades (Living Room and Dinette)</p> <p>S Single Thermostat for Cooling and Heating</p> <p>S Alpine Oak or Walnut Wood Cabinetry</p> <p>S TV Antenna with 2 Jacks Included</p> <p>S Non-Skid Cabinet Shelves</p> <p>S Front Windshield Privacy Curtain</p> <p>S Cedar-Lined Wardrobe</p> <p>S Wardrobe Light</p> <p>S Beveled Glass Mirrors</p> <p>S Solid Core Raised Panel Oak/Walnut Cabinet Doors</p> <p>S Deluxe Drawer Guides w/Travel Locks</p>
<p style="text-align: center;">BATH</p> <p>S Skylight in Tub/Shower</p> <p>S Brass & Chrome Bath Accessories</p> <p>S Corian® Lavy Top with Corian® Sink</p> <p>S Deluxe Medicine Cabinet</p> <p>S Deluxe Fiberglass Molded Shower Enclosure</p> <p>O Shower w/ Fold-Down Seat (EVF, EVS Only)</p> <p>S Granirex Flooring</p> <p>S Corian® Decorative Soap Dish (EVF, EVS Only)</p>		

EAGLE SPECIFICATIONS

WEIGHTS (POUNDS)

	40ENS	40EVF	40EVS
GVWR	31,000	31,000	31,000
GCWR	41,000	41,000	41,000
GAWR (front)	12,000	12,000	12,000
GAWR (rear)	19,000	19,000	19,000
UVW	26,600	26,000	26,600

MEASUREMENTS

	40ENS	40EVF	40EVS
Wheelbase	266"	266"	266"
Overall Length	40' 1-1/2"	40' 1-1/2"	40' 1-1/2"
Overall Height w/AC	12'	12'	12'
Interior Height (max.)	79"	79"	79"
Interior Width (max.)	96"	96"	96"
Exterior Width (max.)	102"	102"	102"

TANK & LIQUID CAPACITIES (GALLONS)

	40ENS	40EVF	40EVS
Grey Water Tank	60	60	60
(Waste) Black Water Tank	40	40	40
Fresh Water Tank	100	100	100
L.P. Tank	40.3	40.3	40.3
Water Heater	10	10	10
Fuel Tank w/Dual Side Fills	150	150	150

CHASSIS

Frame	Spartan® Mountain Master Stacked Rail
Engine	Cummins® C.8.3L/350 HP ISC
Torque	1050 @ 1400 RPM
Cubic Inch	504.5
Transmission	Allison® MD-3066, 6-Speed World w/Electronic Shifter
Alternator Amps	160 Amp Leece Neville
Tires	G159 22.5" Low Profile Highway Radial