

# The All-New ISATA

## *Touring* Sedan



Destined To Lead A Class Of Its Own



# Meet the new ISATA Touring Sedan.

It could *revolutionize* the way you spend the *rest* of your *life*.

If you're planning to explore and enjoy this wonderful world, the revolutionary new ISATA Touring Sedan gives you the ideal way to enjoy your destination - and the trip that gets you there. Easy to drive and maneuver; equipped with all the comforts of home, the ISATA offers a completely new and better solution to recreational travel.

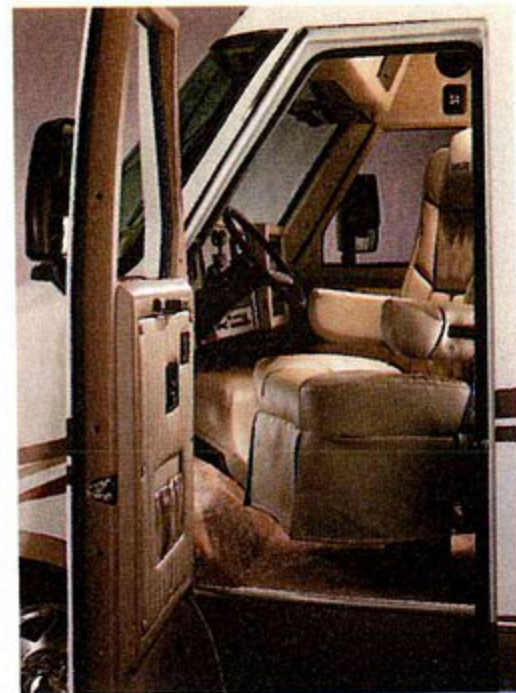
So take the ISATA to the next homecoming game. Or the next family picnic. Head out for that spot on the lake where the bass are bitin'. Take the "fall foliage tour" when color is at its peak and hotels are packed. In short: escape - anytime, anywhere, in a vehicle that makes both the driving and the living fun, easy, convenient and comfortable.



*Our seamless fiberglass sub-floor is foam-sealed and undercoated, to keep the sounds and smells of the road from intruding in the coach.*

*ISATA Model 282RB with optional ribbon paint scheme shown on front cover.*

*Tough tubular steel envelopes the front passenger area to create a safety zone. Steel also frames the driver's door, giving it a look, feel, size and strength unheard of in any comparably priced motorhome. And the curbside entry has the same quality and strength in both the security door and screen door.*



*The extraordinary ISATA cockpit provides all the power, control and comfort you need to travel in luxury, whether it's across town or across the country. The total-power swiveling captain's chairs are dressed in easy-care soft-touch vinyl; glove-soft leather is a popular option.*

## What makes the ISATA Touring Sedan so unique?

Under the ISATA's sleek skin is the remarkable GM/Workhorse CP31442 commercial rail chassis. Proven in countless millions of miles of commercial use, its reliability and strength are unmatched by any light-duty passenger van. On this solid base, ISATA adds its unique "Air-Frame" construction, a technically sophisticated web of square tube aluminum and steel, giving the Touring Sedan a dynamic rigidity and strength no ordinary recreational vehicle can match. The entire skeleton is then sheathed in fiberglass laminated sidewalls,

with a subtle curve that adds strength and improves aerodynamics. Below, a sealed, seamless fiberglass sub-floor separates the living space from road hazards, noise, fumes and moisture. Above, a seamless fiberglass sheet covers the radiused roof and overlaps the sides, shrugging off damage that rain and snow could cause.

Inside this structurally superior cocoon of fiberglass, steel and aluminum, our craftspeople install the highest level of living systems and furnishings. The result is a vehicle that surpasses any ordinary Class B or C motorhome in style and luxury; with balance, geometry and dimensions that make driving it far less demanding than huge, box-like Class A motorhomes.







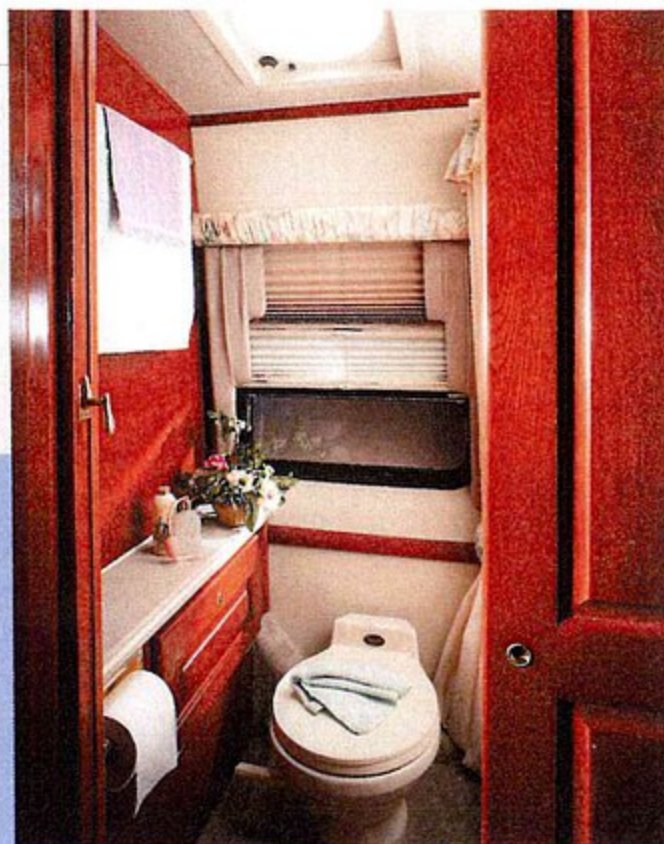




left, this impressive kitchen layout, shown on Model 280, is also found on the 282. Range, convection/microwave and exhaust hood are standard; veled mirror, solid cherry cabinets and Corian® countertops are optional.

Spacious bedroom in Model 280 has a walkaround queen bed, large windows, standard day-night shades, twin night stands, and generous underbed storage. Shown w/optional cherry cabinetry and Corian® counters.

You'll be convinced...  
**Quality**  
is more *important*  
than size.



Furnished like no other, the ISATA gives you plush upholstery, 40 oz. StainMaster carpet. Premium residential cabinetry. 6 1/2" thick innerspring mattresses. Delta chrome faucets and porcelain wash basins. Raised-panel solid oak cabinetry - with easy-care vinyl clad white or solid cherry available. Top quality name brand components and systems throughout.

When it comes to quality of life, the ISATA Touring Sedan delivers, in an ingeniously arranged package that doesn't intimidate you

or anyone else who takes a turn at the wheel. And everywhere you go, you have a full-function, full-time kitchen, bedroom, bath, and living area at your disposal.

Grab a soft drink or prepare a gourmet meal. Take a quick nap or camp out in the wilds for a week. Host the gang or escape with the one you love. Sure, there are bigger motorhomes - and smaller ones. But every time you count on the ISATA Touring Sedan to do the things it does so well, you'll be convinced. Quality is more important than size.

*ISATA baths are luxurious and roomy; Model 280 shown here in optional cherry. Overhead exhaust fan, porcelain Thetford (or Sealand) toilet, and separate step-tub/shower are all standard.*



# Dreams come in *all* sizes. So does the new **ISATA**.



*Whether you're preparing an "on-the-go" snack, hors d'oeuvres for a party, or a romantic dinner for two, the ISATA kitchen fills your every need, with standard range, convection/microwave oven and generous counterspace. Cherry cabinetry and Corian® countertops shown here are optional.*



*Engine access is convenient with the ISATA's automotive style hood. Check batteries, fluids, belts and all regular service items easily.*

With five floor plans, from 23 to 28 feet, (see following pages) there is an ISATA Touring Sedan perfect for your personal travel and recreation plans. All feature the signature ISATA Air-Frame construction, seamless fiberglass floor and fiberglass "blanket" roof. All give you the quality, convenience and luxury you deserve - but there's more...

Every ISATA gives you the luxury of a bus-sized Class A motorhome, but with smaller, less imposing dimensions for all maneuvers, from highway driving to close-in parking and backing. There's less height, length, and width to worry about. And that means reduced wind resistance and excellent gas mileage.

There's still more to the ISATA mystique. Like an automotive hood that puts the engine and all fluid checks where they belong: outside, within easy reach. Like sculpted ground effects that include projector-style running and fog lights. Like welded aluminum boxes that surround and strengthen every through-wall cutout. Like steel frame entry doors that look, feel and sound like they're designed to protect you and your possessions.

Like simple, solid cabinet latches that make it easy to secure every drawer and door. Like a hundred special touches that make the ISATA Touring Sedan unlike any other motorhome. Don't miss any of them. Examine this brochure. See how we define a new standard and lead a new class. Find an ISATA. Or come to Elkhart and see the one we can build for you.



*Dining area with removable/stowable table is standard in every model. Sofa unfolds to a generous (39" x 68") twin bed (39" x 72" on 232RB and 282RB). Leather upholstery and Corian® are optional.*

*At right, this stunning view from the bedroom shows standard solid oak cabinetry, bedroom vanity sink. Bedroom TV is optional. Note standard floor level lighting and overhead exhaust fan. Model 282 shown.*









# Floor Plans:

Water Tank Capacities for the ISATA Touring Sedan

Model	230	232RB	280	282	282RB
Gray	30	30	30	30	30
Black	30	22	32	32	22
Fresh	30	30	32	30	30

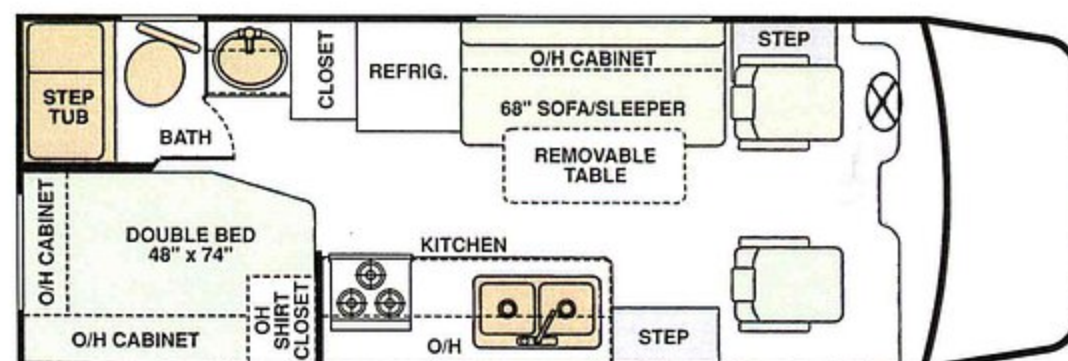
## Key Dimensions

Interior headroom:  
6 ft. 3 in. throughout  
Exterior height:  
9 ft. 6 in. (w/standard air)  
Exterior width:  
7 ft. 6 in. (excludes mirrors)

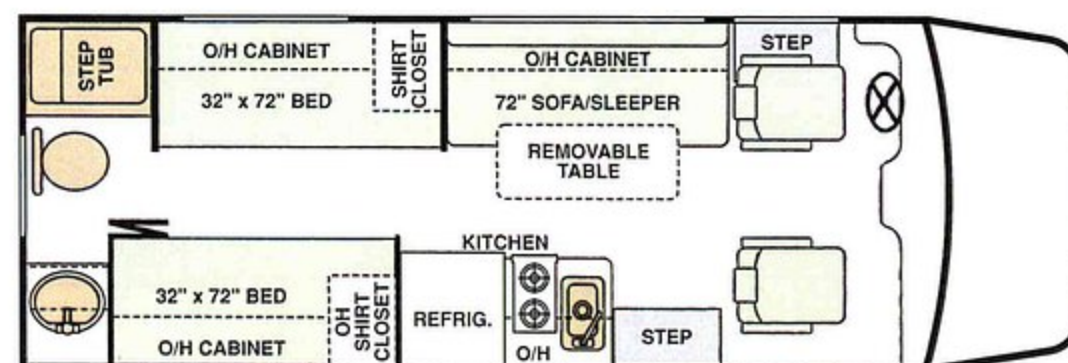
Like a luxury automobile or yacht, every ISATA Touring Sedan combines sophisticated engineering and hand assembly to reward its owners with dependable quality, performance and comfort.

Our unique Air-Frame construction knits steel, aluminum and fiberglass into a dynamically strong, protective web that accepts the jolts, bumps and other rigors of the road without flinching. The result is a true "touring sedan" whose beauty goes more than skin deep and lasts long after it is showroom new.

*Model 230:  
Rear Bedroom,  
Corner Double Bed  
Overall Length: 23' 6"*



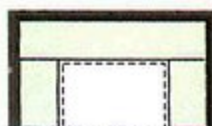
*Model 232RB:  
Rear Bathroom,  
Twin Beds  
Overall Length: 23' 6"*





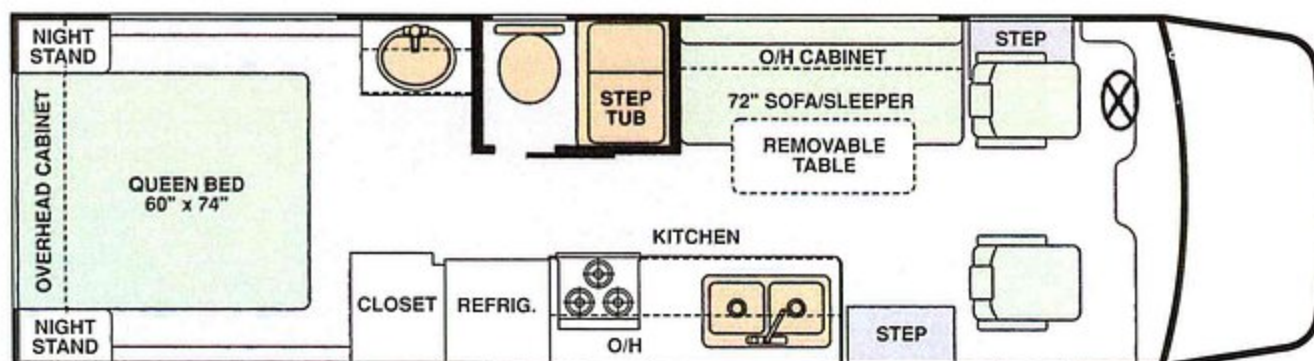
# Names you know and trust

The best names in RV components go into your ISATA: Atwood, Dometic, DuoTherm, A&E, Suburban, Panasonic, Fantastic, Winegard, Bilstein, Generac, Thetford, Sealand, and Audiovox supply standard equipment. Optional suppliers include Corian, Onan, Phillips Magnavox, Cobra, Heart and HWH. See the complete features and options lists in this brochure - but the point is clear: We've chosen the best for your ISATA.

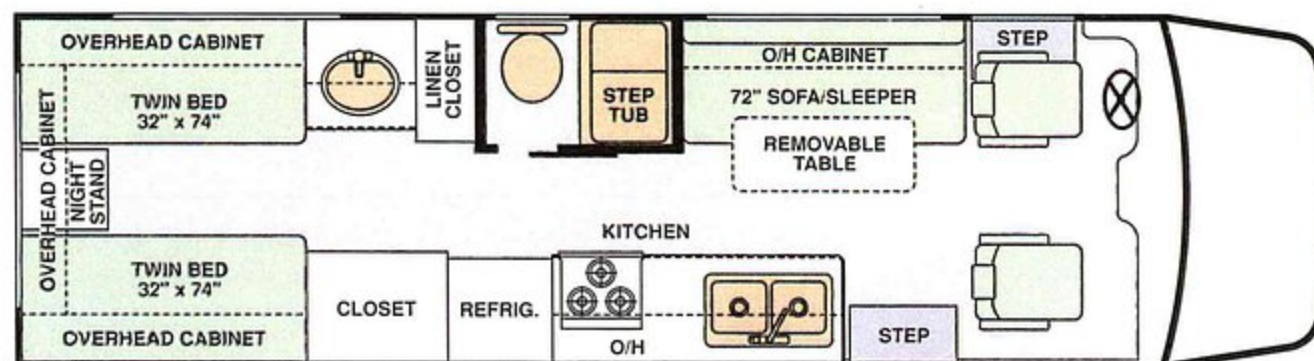


Optional Dinette w/removable table (exchanged for standard sofa & table)  
U-shaped dinette w/table that converts to provide additional sleeping accommodations. 68" x 39" (72" x 39" on models 232RB and 282RB).

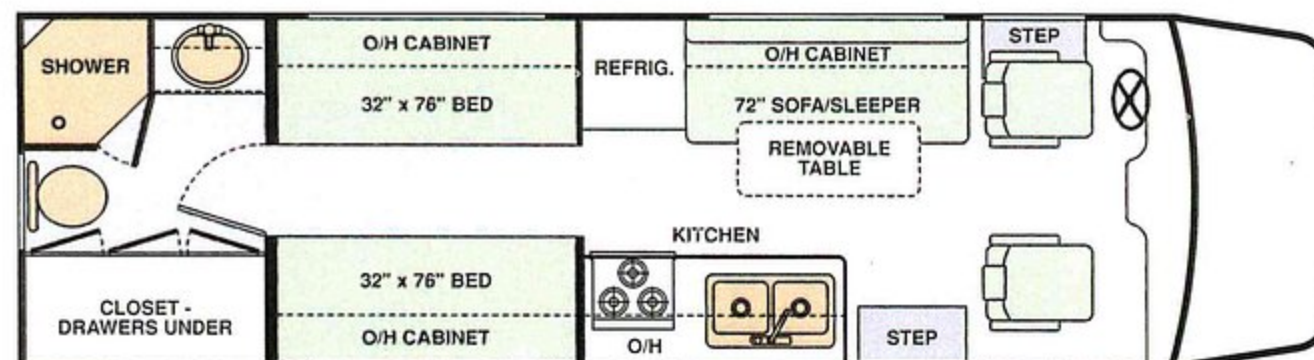
Model 280:  
Rear Bedroom,  
Island Queen Bed  
Overall Length: 28' 6"



Model 282:  
Rear Bedroom,  
Twin Beds  
Overall Length: 28' 6"



Model 282RB:  
Large Rear Bath,  
Twin Beds  
Overall Length: 28' 6"







Standard compass mirror shows compass directions and external temperature; includes handy map light.



Standard Posi-lock cabinet latches provide three advantages: a positive locking mechanism, no protruding handles to snag or injure occupants, and an easy visual check to ensure every cabinet is secure.



Optional outdoor entertainment center has AM/FM/cassette stereo with phone jack, 110v outlet, and weatherproof locking cover.



Every floorplan features a separate vanity, with makeup mirror, lights, storage, towel bar, Delta chrome faucets and porcelain wash basin. (Model 280 shown here, in optional cherry and Corian®.)

No flimsy aluminum screen door here - the ISATA screen door, like the security door, is framed in strong, durable steel, with hinges and latches that add safety and security to your home on the road.



Gleaming stainless steel wheel simulators are standard. Alcoa aluminum wheels (shown here) optional.

Sealed, carpet-lined, molded fiberglass outside storage areas, all with locking doors. (Size and location of storage areas vary by model)



Standard steel step extends or retracts automatically whenever side door is opened or closed, providing easy access in or out.







*Standard convection-microwave oven makes short, easy work of meal preparation. LP gas range cooks like a dream. Note: Easy-care vinyl clad white cabinets are a no-extra-charge alternative to standard solid oak.*

*A frame of steel, strong, dependable hinges and latches, and power window make the ISATA driver's door unequalled in any RV in its price range.*



*Generous storage space is hidden under the queen bed (Model 280). Other beds offer other hidden storage spaces.*



*Optional 5.5 kW Generac or 4.0 kW Onan generator produces steady, quiet, dependable 110v AC power for appliances, lights and other systems. Inside and outside start-switches; sound insulated compartment.*

# This is how you lead

Join us at the ISATA production facility in Elkhart to see just how we create the solid, dependable quality that makes the ISATA Touring Sedan so special. You'll see a high-technology structure with true dynamic strength, worthy of a touring sedan, and you'll see hand-crafted interiors fashioned with pride by skilled professionals. You will know what we say is true. ISATA Touring Sedans - and the people who own them - are destined to lead a class of their own.





# a class of your own.

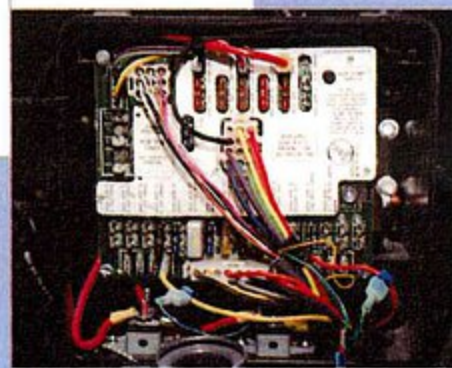
*More steel, aluminum, welds and bolts, mean more strength, durability, and performance. Note how aluminum surrounds all through-wall openings; how steel surrounds the front passenger space.*



*Windows feature tinted energy-saving "E-glass," and awning-style opening sections with screens. Window positions and sizes vary with floorplans.*

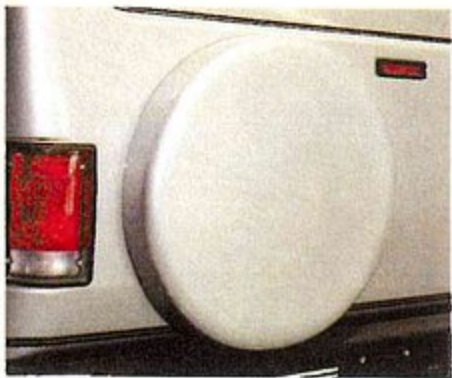


*Dometic® 6.0 cubic foot dual-power (LP/110v), double door refrigerator/freezer is standard\*, with upgrades to three-way power (LP/110v/12v) and capacities to 8.0 cubic feet available. \*Model 232 refrigerator is 5 cubic feet, single door.*



*Standard battery control center provides microprocessor technology to monitor, manage and control charging and usage of batteries for ignition and living systems.*





*Sleek fiberglass spare tire cover looks attractive, protects your vital spare.*



*13,500 BTU roof mounted low-profile air conditioning is standard on every ISATA. Optional 15,000 BTU unit and electric heating are available.*



*Large heated remote controlled exterior rear view mirrors give you a clear view rearward.*



*Bumper-mounted recessed "fisheye" style projector fog and running lights.*



*Standard Rosen aircraft-style visors pivot to any point and provide relief from sun and glaring headlights for driver and passenger.*



*Careful space planning makes the most of available space for closets, wardrobes and other storage. Space varies by floorplan.*



*Optional A & E awning provides shade and protection from the elements; retracts into a self-storing compartment.*



*Ride and handling are enhanced by standard Bilstein shock absorbers on front and rear axles; Ride-Rite air shocks on rear axles.*



*Engine access is convenient with the ISATA's automotive style hood. Check batteries, fluids, belts and all regular service items easily.*





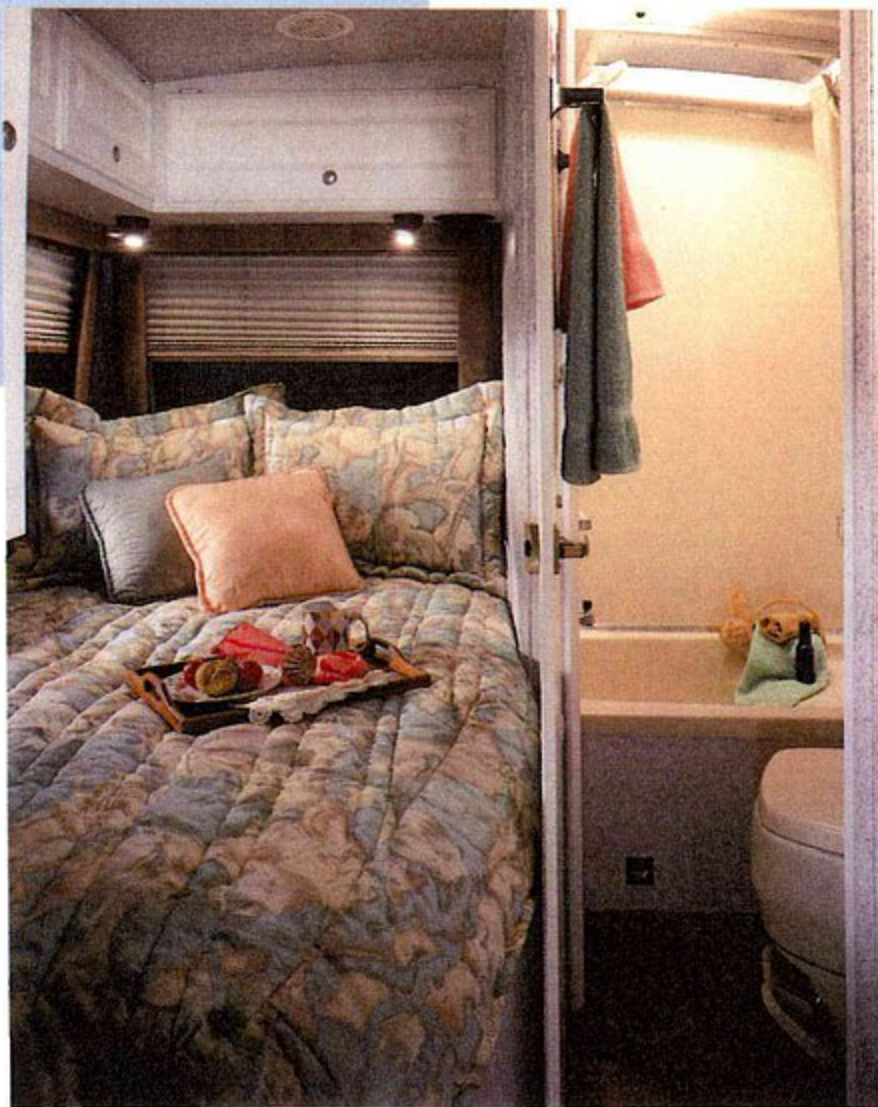


# Your search for the perfect motorhome is over.

Whether you want to downsize or upgrade, the unique size and quality of the ISATA Touring Sedan may be just what you've been looking for. Maybe you're a dedicated RV'er, wanting something easier to drive and maneuver than a bus-size Class A. Maybe you've decided to take a step up from your Class C, in quality and performance. Or maybe you're someone who just likes to take the comforts of home along when you go to the beach, a football game, or ski outing. No matter what your plans, the ISATA Touring Sedan will serve you well.

For the ultimate in driving ease, consider a 23 ft. floorplan, with twin beds or a corner double bed. Or move up just 5 feet in length, and enjoy the

luxury of a walk-around queen bed. Each model offers its own approach to living space, storage, and comfort, but all retain the sleek, slippery profile, Air-Frame construction and premium quality that set ISATA Touring Sedans apart from all other RV's.



*A step tub with shower, porcelain flush toilet, overhead power vent and porcelain vanity (not visible) give you full bath amenities; the corner double bed with 6 1/2" innerspring mattress is a comfy refuge. Awning-style crank-out windows provide ventilation, soft-pleated day-night shades assure privacy, and individual overhead reading lamps light the scene. (Model 230 shown)*

*At a mere 23 1/2" feet, our Model 230 is a clean, solid, compact performer that can take you anywhere with ease, and provide you with the kind of luxury you've come to expect in your life.*



*This handy flip-up counter, featured on all floorplans, adds useful counter space for the cook, then serves as a dining table or desk for the front passenger.*



# Standard *Features:*

## Exterior Features & Construction:

- Radiused aerodynamic fiberglass laminated sidewalls and ceiling
- Molded fiberglass front and rear body caps
- Superior quality gelcoat in white
- Solid block foam insulation throughout: 1.5" in ceiling and floor; 1.25" in walls
- Square-tube aluminum "Air-Frame" sidewalls
- Heavy-gauge square tube steel floor trusses
- One-piece seamless molded fiberglass subfloor
- Seamless supertuff Filon (fiberglass) textured roof, with 4" overlap on sides and caps
- Outside lockable storage - sealed, seamless molded fiberglass liner, w/ steel reinforcing straps
- Sewer hose storage compartment w/ locking door
- Locking doors for fuel fill and fresh water fill
- Welded aluminum frame boxes for all through-wall cut-outs
- Common key for outside locks
- Stainless steel wheel simulators



- Steel-framed curbside entry door
- Automatic electric entry step
- Lighted entry grab handle
- Premium quality heavy duty screen door
- Tire valve extensions for rear wheels
- Two level front bumper step
- 4-color all-paint graphics w/base coat and clearcoat
- Front & rear mudflaps
- 30 ft. land line for 110 volt external power
- Solid brass gravity city water hookup
- Exterior porch and service lights
- Sleek fiberglass cover for full size spare tire
- Hydraulic jack, spare tire and lug wrench

## Driving Compartment Features:

- Full-length steel-framed driver's entry door
- Steel safety cage surrounding front passenger compartment
- Fully integrated seat belt system for driver and front passenger
- 6-way power Captain's chairs w/swivel and recline for driver and front passenger
- Soft touch upholstery for Captain's chairs (leather optional)
- Power steering
- Power brakes
- Tilt steering column
- Remote heated mirrors

- Prince mirror w/temp and compass
- Power windows for driver and front passenger
- Cruise control
- Dash-mounted air conditioning and heat
- Dash instrumentation: engine temperature, fuel level, odometer, tripmeter, speedometer, tachometer, oil pressure gauge, voltmeter
- Rosen aircraft style visors for windshield
- Driver & passenger overhead directional reading lamps
- Overhead storage space in driver's compartment
- Tinted windshield, side and rear windows
- Wide-sweep windshield wipers with washers
- Deluxe in-dash AM/FM/cassette stereo w/4 speakers
- Inside release for hood, w/secondary outside safety release

## Living Space Features:

- Door latch and deadbolt lock on entry door
- Premium quality 40 oz. stain-treated nylon carpet on thick 2 lb. pad
- Low-level aisle lighting with convenience switch at entry door
- Crank out awning-style windows w/screens, no sliders
- Designer fabric window valances
- Mini blinds over kitchen counter



- Soft pleated day/night shades on other windows
- Privacy drape for windshield
- 13 inch remote control Audiovox color TV
- Winegard roof-mounted antenna w/manual crank, 360 swivel and 12 volt signal booster
- Double stainless steel sinks (232 is single)
- Chrome and brass Delta single-handle faucets
- Sprayer in kitchen sink
- Beveled mirror/splash guard on kitchen wall
- Sink topper to provide additional work space in kitchen
- 6.0 cubic foot Dometic "Royal Series" dual power two-door refrigerator/freezer (5.0 single door on 232)
- Three-burner LP gas range in black enamel (2-burner on 232)
- Lighted power hood over range
- Sharp convection/microwave oven
- Large flip-up countertop extension, to use as desk, kitchen counter, or added dining area



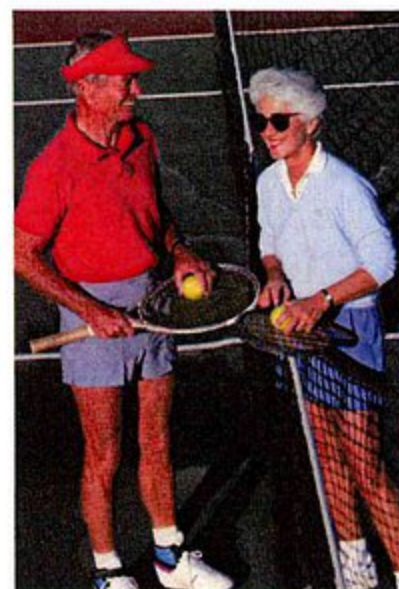
- Sofa unfolds to bed
- Seat belts for two passengers on sofa
- Pedestal-mounted dining table; stores in its own storage area under sofa
- Soft-touch fabric ceiling
- Recessed double bulb fluorescent ceiling lights over dining and kitchen area
- Double bulb fluorescent light over kitchen sink
- Numerous 12 volt incandescent lights
- Strategically placed 110 volt outlets
- Vinyl clad raised-panel cabinetry in easy-care frost white or satin finish raised-panel solid oak cabinetry
- Posi-lock cabinet latches - provide three positive advantages: Positive latching mechanism. No protrusion to snag or injure occupants. Quick, easy visual check assures every cabinet is secure
- 6 1/2" thick inner spring mattress(es)
- Fold-down mirror shelf with hookups for 12 volt power and cable for bedroom TV (optional on 23 ft.)
- Two individually switched pivoting reading lights in bedroom
- Underbed storage
- Designer bedspread and pillow shams
- Vanity-style porcelain basin w/Delta chrome single lever faucet

- China toilet in bath
- Step tub w/shower; wand-style shower head (Shower only in RB models)
- Shower curtain, shower surround
- Skydome in shower
- Mirrors over vanity and in bath door
- Water pump switch in bath
- Emergency exit window in rear of vehicle

### Comfort Control, Environmental Systems:

- 30,000 BTU Duo-Therm LP gas furnace with ducted discharge
- Low-profile Duo-Therm roof mount 13,500 BTU air conditioner, with ceiling ducts and vents
- Welded aluminum air conditioning ductwork
- Air conditioning vents with controls to redirect air flow volume
- Fantastic roof vents: two in 23 ft (one reversible, one exhaust), three in 28 ft. (2 reversible, one exhaust)
- Comfort control center w/ thermostat and switching for heating and air conditioning
- Full function monitor panel - monitors levels of fresh, grey, and black water; battery status; includes switches for water heater, holding tank heater, and exterior lights
- 6-gallon LP gas water heater with direct spark ignition

- Water heater bypass valve
- Carbon monoxide, smoke and LP gas detectors
- Inside start switch for generator
- Inside battery cutoff switch
- Completely silent 110 to 12 volt converter
- GFI reset circuit
- Heated holding tanks (black & grey)
- 40 lb. LP gas tank
- Fire extinguisher at entry door



### Chassis Features:

- Model CP31442 commercial chassis
- GVWR:  
23 ft. models: 11,000 lbs.  
28 ft. models: 12,000 lbs.

- 5700 VORTEC V-8 w/sequential fuel injection
- SAE net HP 240 @ 4,000 rpm
- SAE net torque 325 ft. lb. @ 2800 rpm
- Dual rear drive wheels
- LT 215/85R16/D highway blackwall tires w/ full sized spare
- 40 gallon fuel tank
- 50-state emission equipment
- Transmission and engine oil cooler
- 4-wheel anti-lock power front disc, rear drum brakes
- 1.25" front stabilizer bar
- Independent front coil springs
- Rear 2-stage multi-leaf springs
- Independently adjustable Firestone Ride-Rite air bags on drive axle
- Bilstein shock absorbers, front and rear
- 4-speed automatic transmission w/electronically controlled overdrive
- 4.10 rear axle ratio
- Automotive-style hood w/gas shock supports
- Four bumper-mounted driving lights
- Battery Control Center to control and manage charging of batteries
- Heavy duty chassis battery
- Auxiliary house battery
- 124 amp Delcotron alternator
- 3 year/36,000 mile chassis warranty



# Options:

## ☐ Power door locks

(Driver's door and main entry door)  
Save time and steps. Lock and unlock both doors at the touch of a button. Great security and convenience.

## ☐ Audiovox back up camera

Rear mounted miniature black and white camera with wide angle lens and monitor mounted over front windshield gives you a good view of the area immediately behind your vehicle to make backing and parking safer and easier.

## ☐ Phillips Carin GPS navigation system

State-of-the-art satellite based navigation system that can pinpoint your position anywhere in the world within a few hundred feet. Unit provides maps, graphical representation of roadways, and "speaks" verbal directions to you so you can keep your eyes on the road.

## ☐ Audiovox videotape recorder

Tape your favorite shows, watch movies or your own travel videos on the Touring Sedan's standard color TV. Wireless remote controls all tape functions.

## ☐ Heat strip for air conditioning system

Allows you to "take the chill off" with clean, convenient electricity, without having to start the unit's LP gas furnace.



## ☐ HWH electro-hydraulic leveling system.

Level and stabilize your motorhome for a solid, stable living space when parked. Push-button ease of operation: wide footpads work on soft or irregular surfaces.

## ☐ Cobra CB radio

Full-function, hand-held 40-channel two-way radio w/dash bracket and exterior antenna. Keep in touch with traveling friends, others on the road, and emergency services.

## ☐ Remote spotlight

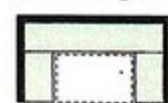
Steerable exterior mount, over front cab, with remote switch and joystick control mounted in dash. Bright 12V sealed beam.

## ☐ Barrel chair

Compact but comfortable seating. Swivel base, matching cloth upholstery.

## ☐ Dinette w/removable table

(exchanged for standard sofa & table) U-shaped dinette w/table that converts to provide additional sleeping accommodations. 68" x 39" (72" x 39" on models 232RB and 282RB).



## ☐ 15,000 BTU roof-mounted Dometic® air conditioning

(exch. for 13,500 BTU unit; raises overall height 4") Higher-capacity unit for areas or conditions where higher than normal demands on the air conditioning system can be expected.

## ☐ 13', 15' or 16' A & E box awning

Top-quality A & E manual crank awning, extends out 7 feet.

## ☐ Individual awning for any window

Provides shade and enhances privacy.

## ☐ GM 6.5 liter diesel engine

Naturally aspirated, 160 HP, special order only.

## ☐ Outdoor entertainment system

AM/FM/cassette stereo with all-weather stereo, speakers, mounted on exterior, passenger side. Weatherproof enclosure includes 110v outlet and phone jack.

## ☐ Outdoor shower

Great for swimmers, hikers, quick cleanups, camping, kids, etc.

## ☐ Electric trumpet horns

Twin stainless steel horns provide high volume warning. Electric power needs no compressor.

## ☐ ALCOA aluminum alloy wheels

Stylish, high-performance wheels.

## ☐ Raised panel cherry cabinetry

Upgrade from standard oak cabinets. Dark, hard, tight-grained wood. Durable finish meets all the standards of the National Kitchen Council Assoc.

## ☐ Raised panel vinyl clad frost white cabinetry

A no-extra-charge alternative to the standard oak cabinets.

## ☐ Privacy curtain between bedroom and living room

Especially useful if you often have guests, optional on 23 ft. models and 282RB, standard on most models.

## ☐ 8 cubic foot Dometic® double door refrigerator/freezer

Upgrade in size from standard 6.0 cubic foot. Separate refrigerator and freezer. (N/A on 232RB.)

## ☐ 8 cubic foot Dometic® double door refrigerator/freezer w/ice maker

Upgrade from from standard refrigerator, with automatic ice maker in freezer compartment. (N/A on 232RB.)

## ☐ 3-way Dometic® refrigerator (110V, 12V or LPG)

Choice of either 6.0 or 8.0 cubic foot size, with added 12v capability.

## ☐ 13" (diag.) rear Audiovox color TV (9" on 23 ft. model)

Convenient but out of the way, recessed into bedroom cabinetry. Remote control.

## ☐ Cable TV and phone prep

Sealed plug-in connections on passenger side exterior wall, includes wall-mounted phone plug in kitchen area and coaxial wiring to living room and bedroom.



# Fabrics & decor choices

## ☐ Audiovox 10 disc CD changer

Remote changer, tucked out of the way in cabinet storage space. Plays through existing sound system.

## ☐ DSS satellite TV dish

Roof-mounted 18" mini satellite dish w/folding and pivoting mount and satellite signal receiver/amplifier. Enables you to receive DSS broadcasts while parked anywhere in the United States. Programming subscription and tuner/receiver required in addition to the satellite equipment.

## ☐ Heart Interface power inverter

Electronic system to convert 12V battery (or generator) power to 110V for common plug-in appliances. Advanced circuitry manages current load for up to 2500 watts of usable power.

## ☐ Tow hitch (Class II) w/wire harness

## ☐ 5.5kW Generac or 4.0kW Onan generator

Your choice, for steady, quiet, dependable 110v AC power for appliances, lights, and other systems. Inside and outside start switches, sound-insulated compartment.

## ☐ Other options are available

Contact your ISATA dealer for more information.



## Standard Fabrics & Carpet

1. Bedspread/Valance
2. Wall Fabric
3. Captain's Chair Fabric
4. Carpet
5. Sofa
6. Countertop

## Optional Leathers & Countertop

7. Corian® Countertop
8. Leather Captain's Chair Fabric

Our interior design staff has captured the contemporary colors and materials that grace so many of today's finer homes, and use them to turn the interior of your ISATA Touring Sedan into a showplace of subtle, sophisticated color, texture and style.



# We've invested our *years of experience* to create *luxury recreational* products for you.



*Floor plans, features and specifications of the ISATA are subject to change without notice.*



3733 Lexington Park Drive • Elkhart, Indiana 46514  
Phone: 1-888-295-7859 • [www.dynamaxcorp.com](http://www.dynamaxcorp.com)  
©1999

A quarter-century heritage of manufacturing quality and service stands behind every ISATA Touring Sedan, which joins its affiliate, Bennington Marine, builder of premium quality pontoon boats. This growing family of recreational products has won the attention and admiration of people across the country, signaling a new level of quality and performance for those who demand the best.

For information on activities and membership benefits of the new ISATA Owners' Group, contact the Club Director, at 3733 Lexington Park Drive, Elkhart, Indiana 46514.



52791 County Road 113  
Elkhart, Indiana 46514  
1-888-295-7859  
1-219-264-6336  
[www.bennington.com](http://www.bennington.com)