

**FLEETWOOD.RV**

**Flair<sup>®</sup>**

1 9 9 9

# T HE PERFECT HOME AWAY FROM HOME.

At Fleetwood RV, we've been making America's favorite recreational vehicles for nearly 50 years. We've done it by building honest value, rugged dependability and peace of mind into every one of them. The 1999 Flair is a perfect example. Everything about it is new, except its long tradition of uncompromising quality. As the most affordable Fleetwood RV Class A, Flair is loaded with value. It starts with the new full basement that gives the coach a level floor, letting passengers share the same expansive view as the driver. Plus, it opens up lots of new storage room below. Also new this year is a flat ceiling with ducted A/C that increases headroom and storage throughout. Not to mention a spacious new bedroom suite that dreams are made of. Our EZ Glide™ Room Slide-out System effortlessly makes your RV even roomier with the flip of a switch on some models. And you can now have easy access to the storage area below the slide-out with our new EZ Store™ Storage System which moves in and out with the slide-out room. On the outside, the sleek, newly-designed full-fiberglass front-end cap, bonded wraparound windshield, one-piece exterior walls and contemporary graphics create a striking profile. So, whether you're at the lake, the mountains, or on the road, you don't have to ever leave the comforts of home behind when you're in your Flair.

## 1999 FLAIR SPECIFICATIONS

Chevrolet Chassis	25Y	30H	34D	32V
Engine CID	454	454	N/A	N/A
Wheel Base	159"	190"	N/A	N/A
GWR lbs <sup>1</sup>	14,800	16,500	N/A	N/A
GCWR lbs <sup>2</sup>	20,000	20,000	N/A	N/A
GAWR (front) lbs <sup>3</sup>	5,500	5,500	N/A	N/A
GAWR (rear) lbs <sup>3</sup> (incl. tag)	11,000	11,000	N/A	N/A
Hitch Rating/Tongue wt. lbs	3,500/250	3,500/250	N/A	N/A
Fuel Capacity (gal/lbs)	75/450	75/450	N/A	N/A

Ford Chassis	25Y	30H	34D	32V
Engine LD	N/A	6.8	6.8	6.8
Wheel Base	N/A	190"	208"	208"
GWR lbs <sup>1</sup>	N/A	18,000	20,500	20,500
GCWR lbs <sup>2</sup>	N/A	21,500	24,000	24,000
GAWR (front) lbs <sup>3</sup>	N/A	7,000	7,000	7,000
GAWR (rear) lbs <sup>3</sup> (incl. tag)	N/A	11,000	13,500	13,500
Hitch Rating/Tongue wt. lbs	N/A	3,500/250	3,500/250	3,500/250
Fuel Capacity (gal/lbs)	N/A	75/450	75/450	75/450

Dimensions	25Y	30H	34D	32V
Length	26'0"	31'0"	35'0"	33'0"
Height (w/roof A/C)	11'10"	11'10"	11'10"	11'10"
Width	102"	102"	102"	102"
Interior Height	79"	79"	79"	79"
Interior Width	96"	96"	96"	96"

Liquid Capacities (gallons)	25Y	30H	34D	32V
Fresh Water Holding	100	100	80	80
Black Water Holding	50	50	50	50
Grey Water Holding	50	50	50	50
Appliance LPG Tank*	25	25	25	25

<sup>1</sup> GWR (Gross Vehicle Weight Rating): Maximum permissible weight of this motor home. The GWR is equal to or greater than the sum of the unloaded vehicle weight plus the net carrying capacity.

<sup>2</sup> GCWR (Gross Combination Weight Rating): Value specified by the motor home manufacturer as the maximum allowable loaded weight of this motor home with its towed trailer or towed vehicle.

<sup>3</sup> GAWR (Gross Axle Weight Rating): Maximum permissible loaded weight a specific axle is designed to carry.

\*Tank manufacturer's listed water capacity (WC) actual filled. LP capacity is 80% of listing due to safety shut off required on tank.

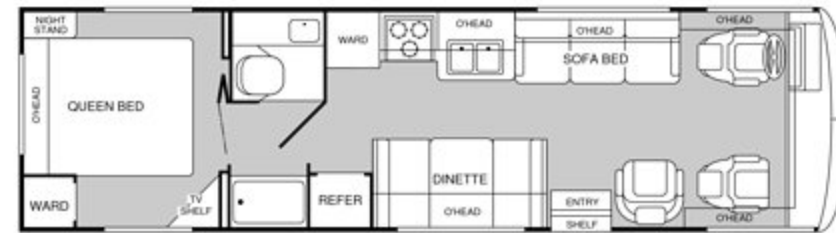
MODEL  
**25Y**

- Island double bed
- Private bathroom
- Dinette or opt'l sofa bed
- Double door wardrobe
- Opt'l twin beds



MODEL  
**30H**

- Island double bed
- Private bathroom
- Dinette or opt'l sofa bed
- Double door wardrobe
- Opt'l twin beds



MODEL  
**32V**

- Living room slide-out
- Wardrobe slide-out
- Island queen bed
- Private toilet
- Swivel chair



MODEL  
**34D**

- Living room slide-out
- Island queen bed
- Fully enclosed bathroom
- Large wardrobe
- Swivel chair w/table



## 1999 FLAIR FEATURES AND AVAILABLE EQUIPMENT

Exterior Automotive and Electrical, <i>Standard Equipment</i>		
Tinted Windshield	Undercoating	Wheel Covers
Trailer Hitch w/4-point Electrical Hook-up	Valve Extenders	Halogen Headlights
Steel Surfaced Firewall	Dual Battery Charge Control	Spare Tire w/Carrier
Windshield Wipers w/Wet Arm		

Automotive, <i>Options</i>	25Y	30H	34D	32V
Digital Satellite System Manual Lift	Opt	Opt	Opt	Opt

Exterior, <i>Standard Equipment</i>		
Full Fiberglass Front-end Cap	Steel Seal Frame	Gas Lift Strut Supports
One-piece Swingdown Engine Access Door	Insulated Luggage Doors	Exterior Assist Handle
Carpeted Luggage Compartments	Fiberglass Front Grille	Ext. Rearview Mirror
Fiberglass Front Bumper	Entry Door w/Deadbolt Latch	TV Antenna
Awning Rail/Drip Molding (both sides)	Park Cable Receptacle	Slider Windows Throughout
Continuous One-piece Bulb Seal	Roof Ladder	Power Entry Step
Hidden Stainless Steel Latch Rods	Porch Light	Exterior Shower
2 Colorway Graphics to Match Decor	Single Paddle/Metal Latches	Lower Body Accent Paint
Rotocast Front/Rear Well Trim	20' Sewer Hose	

Exterior, <i>Options</i>	25Y	30H	34D	32V
Hydraulic Levelers	Opt	Opt	Std	Std
Awning	Opt	Opt	Opt	Opt
Stainless Steel Wheel Simulators	Opt	Opt	Opt	Opt
Power Mirrors (heated)	Opt	Opt	Opt	Opt

Platform and Body Construction, <i>Standard Equipment</i>		
Vacubond Floor	Vacubond Walls w/Smooth Ext. Fiberglass	
Radius Roof w/Duct for A/C	Heated Holding Tanks	One-piece Rubber Roof
Galvanized Luggage Compartment Carpeted	Full-basement Floor Configuration	Steel Truss System
Flat Interior Ceiling	Steel Floor/Wall/Ceiling Framing	

Interior Automotive, <i>Standard Equipment</i>		
Intermittent Wiper Control	Dbl. Swivel Sun Visors w/Map Pocket	
Radio w/Cassette/MX Electronic Tuner	Engine Cover Conv. Tray	Cruise Control
Driver/Passenger Side Magazine Rack	Reclining Captains Chairs	Auxiliary Start Circuit
Auto A/C/Heater Combo	Radio Switch-Main/Aux.	3-point Front Seat Belts
Battery Disconnect System		

Interior, <i>Standard Equipment</i>		
Bright Brass Bath Accessories	Roller Guide Drawer Slides w/Transit Ship Locks	
Molded Tub	2 Interior Decors	Entry Rail (oak & brass)
Raised Panel O/H Cabinet Doors	Wood Drawers	Wall-to-wall Carpet
Innerspring Mattress	Seat Belts	Solid Divider Doors
Large Double Stainless Steel Sink	Window Covering	Bedsprad
Vinyl Floor Covering (in galley/bath)	Brass Finished Cabinet Hardware	Skylight in Tub/Shower
Adjustable Cabinet Shelves	Miniblinds (metal)	Sink Cutting Board

Interior, <i>Options</i>	25Y	30H	34D	32V
Folding Shower Door	N/A	Std	N/A	Std
Shower Curtain	Std	N/A	Std	N/A
Molded Shower Pan	Std	Std	N/A	Std
Molded Tub	N/A	N/A	Std	N/A
ECC w/Dual A/C w/5kw Gen.	Opt	Opt	Opt	Opt
Compact Disc Player	Opt	Opt	Opt	Opt
VCR	Opt	Opt	Opt	Opt
Twin Beds/Nightstand(s)	Opt	Opt	N/A	N/A
Linoleum	Opt	Opt	N/A	N/A
Fantastic® Power Roof Vent	Opt	Opt	Opt	Opt

Interior Lighting, <i>Standard Equipment</i>		
Incandescent Lighting	Decor lighting	Makeup Lights in Bath

Slide-out, <i>Options</i>	25Y	30H	34D	32V
Living Room	N/A	N/A	Std	Std

Appliances, <i>Standard Equipment</i>		
6-cu. ft. Refrigerator (lg. dbl. doors)	Single Lever Galley Faucet	Marine Toilet
Light/Power Range Hood & Monitor Panel	Demand Water Pump w/Filter	Water Heater Bypass
Rear Speakers in Bedroom	Power Bath Vent	TV Antenna
Single Roof A/C w/Solar Battery Charger	Furnace (34m BTU)	20" TV in Front Overhead
16" 3-burner, High-output Range w/Oven	Microwave	Video Control Box
6-gallon Quick Recovery Water Heater w/D.S.I.		

Appliances, <i>Options</i>	25Y	30H	34D	32V
Double Door Refrigerator (8-cu. ft.)	Opt	Opt	Opt	Opt

Electrical, <i>Standard Equipment</i>		
120v/12v AC/DC Convert. Central Elect. Panel w/Charger	4.0kw Generator	
Dual 6v/Deep Cycle 217-amp House Battery	Patio Receptacle (GFI)	Rear TV Receptacle
Water Pump Switch	30-amp Service	VCR Ready

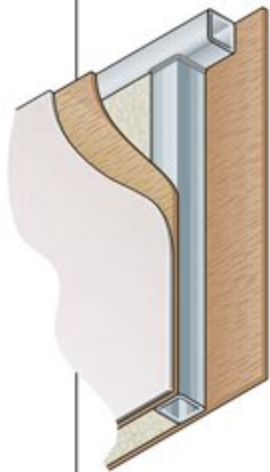
Sleeping Accommodations, <i>Standard</i>	25Y	30H	34D	32V
Convertible Sofa	N/A	46" x 72"	46" x 66"	46" x 66"
Dinette	40" x 74"	40" x 74"	40" x 74"	40" x 74"
Queen Bed	N/A	60" x 74"	60" x 74"	60" x 80"
Double Bed	53" x 74"	N/A	N/A	N/A

Sleeping Accommodations, <i>Options</i>	25Y	30H	34D	32V
Twin Beds w/Nightstand	30" x 74"	34" x 76"	N/A	N/A
Convertible Sofa w/Table	46" x 74"	N/A	N/A	N/A

Safety, <i>Standard Equipment</i>		
Carbon Monoxide Detector	LPG Detector	Smoke Detector
Fire Extinguisher	Emergency Exit Window	

# WHEN THE DUST SETTLES, THERE'S NOT AN RV IN THE WORLD THAT'S TESTED LIKE A FLEETWOOD RV.

If anyone loves to tear an RV apart, it's us. Because at Fleetwood RV nothing's more important than your safety and comfort. While our improvements aren't all visible to the eye, we commit millions of dollars a year in product development and research to build what we believe are the finest RVs in the world.



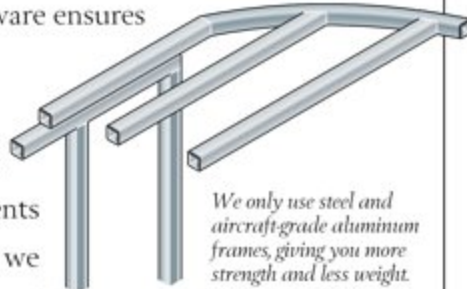
*Vacubond construction ensures that every roof, wall and floor is completely sealed.*

It all starts with advanced computer analysis of new prototype designs. Once built, the prototypes undergo rigorous load bearing and weight distribution stress tests. Stringent load analysis software ensures improved reliability.

Then the relentless testing and re-testing of components begins. In a couple of weeks we can simulate years of real world

use. Slide-out mechanisms have to open and shut thousands of times without a complaint. Seat belts must withstand more than three-ton stress levels without a whimper. And doors have to endure tens of thousands of slammings without losing their composure.

At the end of the day, we've thrown just about anything and everything we can at our units, just to make sure we have the best designed and most thoroughly tested RVs in the world. Then we back them with a limited 1-year/3-year warranty supported by Fleetwood RV dealers throughout the U.S. and Canada. So you have what we believe to be the best-handling, safest, most comfortable RV anywhere.



*We only use steel and aircraft-grade aluminum frames, giving you more strength and less weight.*

Dear Friend,

Here at Fleetwood RV, we have over 200 people working on research and development. But we get our best ideas when we hit the road in our recreational vehicles.



Talking to people like you and noticing for ourselves little ways to make RVing more comfortable, more convenient and more fun.

If I had two pieces of free advice to give a friend in the market for an RV, the first would be to get a Fleetwood RV. Not because we need to sell one more. Heck, we sell more than anyone else. But because I know we build the best product out there for the money.

Second, really think about your dealer. He has to be someone you trust for advice, service and accessories. Only the best get to be Fleetwood RV dealers in the first place. Then we work with them to continually improve customer satisfaction. That's why 9 out of 10 owners would recommend their Fleetwood RV to a friend and 9 out of 10 of them would also recommend their Fleetwood RV dealer.

I hope that helps. And I also hope I see you out there, somewhere in this beautiful world, enjoying your new Fleetwood RV while I'm out there doing the same.

John C. Crean

Chairman Emeritus and Founder  
Fleetwood Enterprises, Inc.

*Your local Fleetwood RV dealer is:*

*If your local dealer is not indicated, write to the address below; or call us toll free 24 hours a day at 1-800-444-4905. Or visit our Website at <http://www.fleetwood.com>*

**FLEETWOOD RV**

*America's Favorite Recreational Vehicles*

Fleetwood Enterprises, Inc.  
P.O. Box 2875, Van Nuys, CA 91404-2875

Product information and photography included in this brochure were as accurate as possible at the time of publication. Subsequent refinements may be evident in the actual product. Prices and specifications are subject to change without notice. All fuel and liquid capacities are approximate and dimensions are nominal. Fleetwood has designed its motor home brands to provide a variety of potential uses for its customers. Each unit features the optimum storage, fluid, seating and sleeping capabilities. Though the customer enjoys this potential, he/she also has the responsibility to select the proper combinations of loads without exceeding the chassis weight capacities.