

# HURRICANE

Class A Motorhomes



*Hurricane*



Class A

HURRICANE

**Hurricane is BIG on value.  
BIG on standard features.  
BIG on available options.**

**T**he Hurricane Class A Motorhome extends quality, value and Four Winds International's continued commitment to excellence. From the rugged foundation to the gracious living arrangements with attractive interiors, the Hurricane has established itself as the leader of its class. And now, the Hurricane is available with in-roof ducted air.

Hurricane, leading the way in the new era of motorhome touring...all at a price you truly will appreciate.



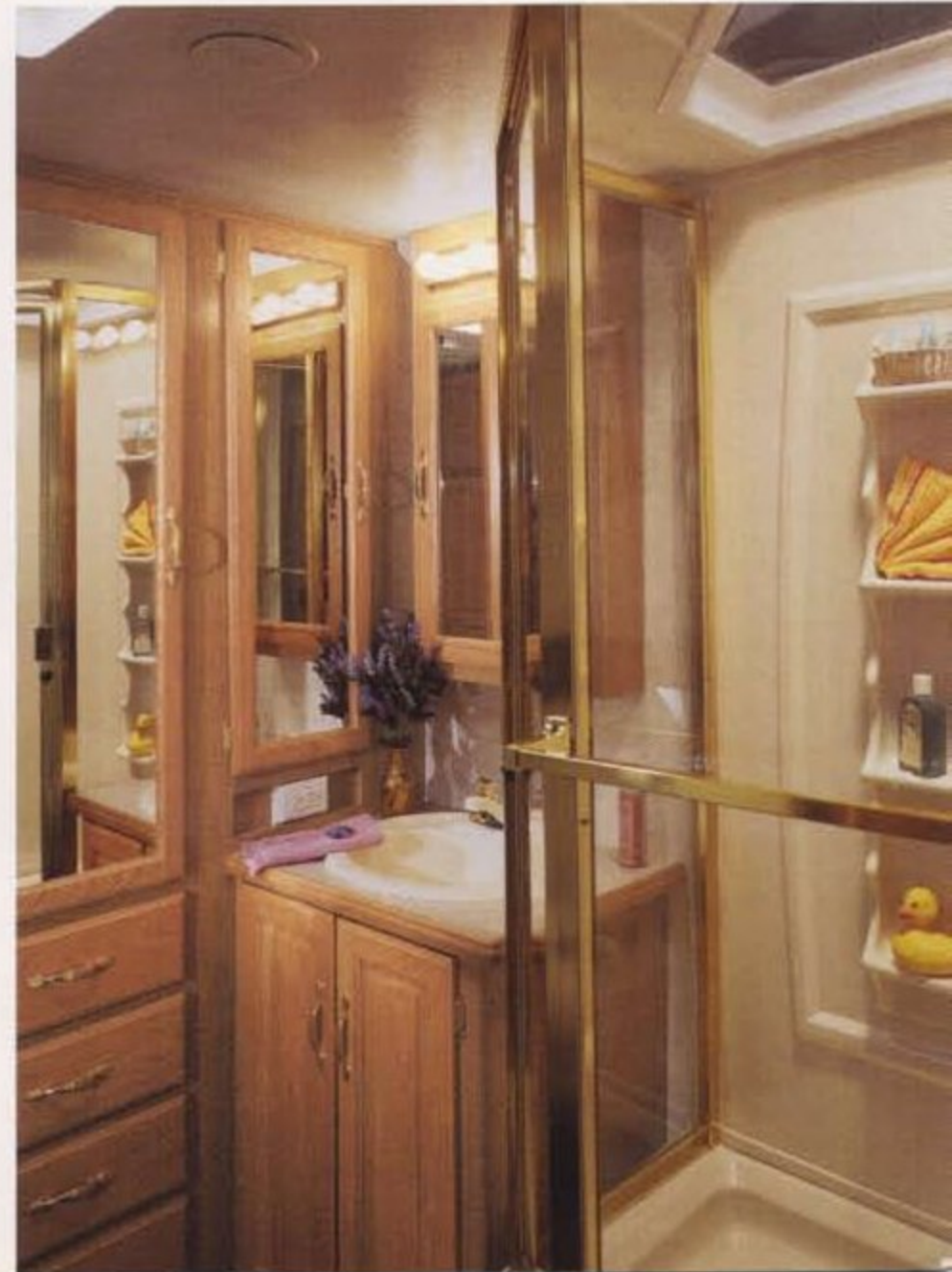


**T**he driver's compartment is designed and built for maximum comfort and safety. Fully-insulated steel-cage construction protects you, while the huge panoramic windshield affords maximum visibility. The ergonomically designed dash keeps all gauges within easy view and all switches and controls within easy reach. Our in-dash heating and air conditioning system distributes air through plenums, not ducts - reflecting the best in automotive design. The deluxe, fully-adjustable captain's chairs keep you comfortable for the long drive and seatbelts are standard throughout.



**T**he Hurricane galley provides plenty of space and all the amenities of home. It comes complete with residential style brand name appliances. Drawers are fitted with high-quality roller guides for smooth operation.

**H**urricane's spacious bathroom offers generous storage in its warm surroundings. The popular standard skylight allows for additional natural lighting and warmth while adding extra head room in the shower area.





## HURRICANE CLASS A INTERIORS



Archer Blue



Adelphi Green



Archer Taupe

**T**he Hurricane's impressive exterior storage features Roto-Cast® storage compartments. These seamless compartments virtually eliminate the possibility of water intrusion. This proven technology also provides a quiet, strong and insulated storage area for all your valued belongings.



**A**ll the bedrooms feature island queen beds complete with matching bedspreads, pillow shams and window treatments. Spacious wardrobes and generous shirt closets allow for plenty of storage for your belongings. And for extra storage convenience, the bed frames are fitted with gas lift-struts for easy access to the valuable under bed storage compartment.





# HURRICANE SLIDE-OUTS

Class A

The Hurricane slideouts are an excellent way to enjoy your traveling experiences. They come standard with the slide room awning for easy water run-off and to keep the top of your room free of debris.

The slideout floorplans dramatically increase the floor space in both the living area and galley. Both floorplans are designed to offer a tremendous amount of interior and exterior storage and are equipped with the fabulous SuperSlide. Easy to operate, Hurricanes SuperSlides are built for reliability and long life and are sure to add even greater value to your motorhome investment.

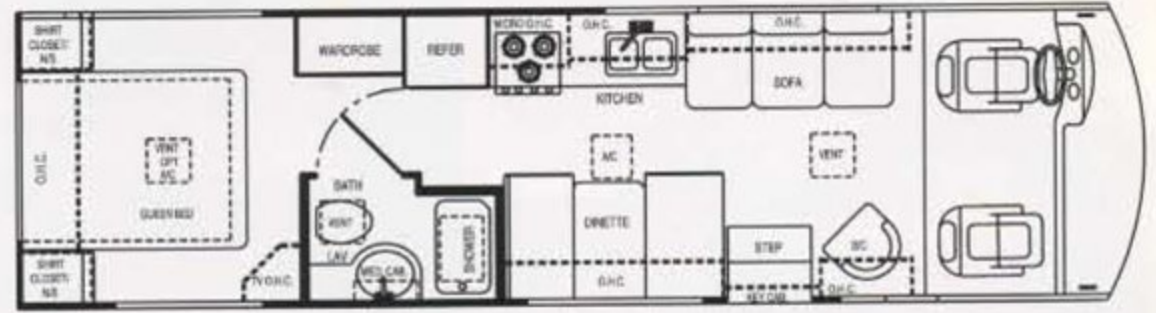




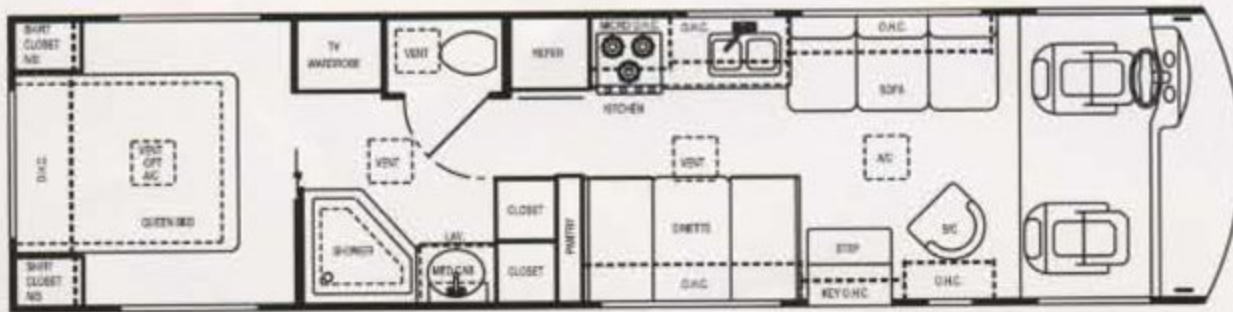
29D



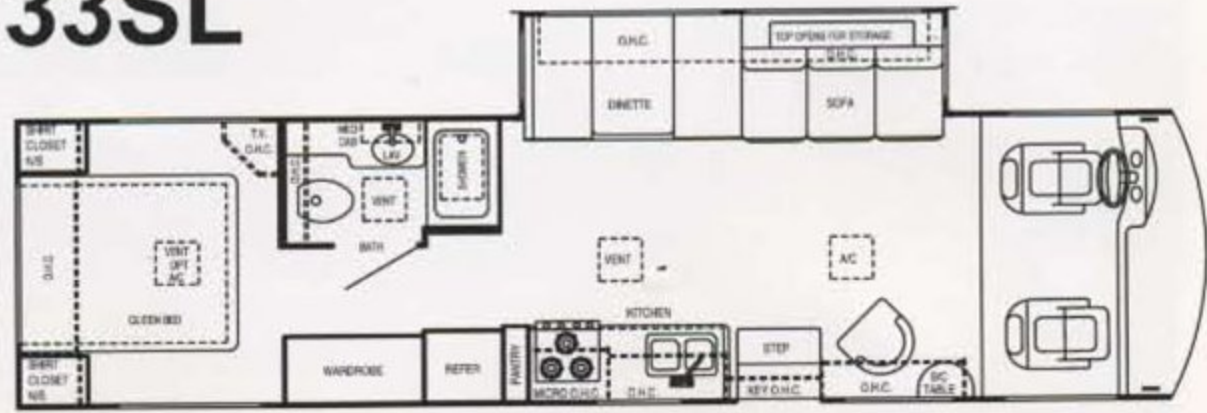
30Q



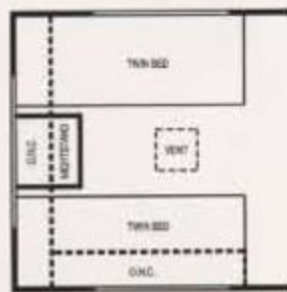
33B



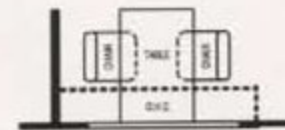
33SL



34K



Twin Bed  
Option



Free Standing  
Dinette  
Option



### *Hurricane Class A*

#### *Standard Features*

##### Construction/Exterior

- 1 1/2 x 1 1/2", 16 gauge steel welded floor system
- Deluxe radius-corner compartment doors
- Electric entrance step
- Factory-installed awning
- Factory-installed hitch
- Fully laminated roof, walls and floors incorporating energy-saving high-density block foam insulation
- Fully-welded tubular aluminum roof and sidewall cage construction
- Generator
- Large pass-through exterior storage compartment
- Large panoramic windshield
- One-piece fiberglass rear cap
- Patented E.M.T. system which is a rubber mounting suspension system on the chassis that absorbs and isolates road vibration for a smoother ride
- Premium one-piece rubberized roof
- Safety-assured double steel-plated and insulated firewall and cockpit floor
- Seamless roto-cast® storage compartments
- Seamless, smooth bright white fiberglass exterior sidewalls
- Skylight in bathroom
- Widebody design

#### *Standard Features*

##### Appliances

- 13,500 BTU ducted roof air conditioner (front)
- 19" color TV w/remote control
- Cable TV hook-up
- Coleman direct cool air conditioner
- Electronic ignition water heater w/standard water heater bypass kit
- Fully-equipped galley which includes: a large double-door refrigerator, high-output 3-burner gas range w/oven, residential-style microwave and high-quality roller guides on all drawers
- Name brand appliances
- Premium digital AM/FM cassette stereo

##### Comfort/Convenience/Safety

- Bedroom TV cabinet
- Deluxe exterior mirrors
- High-efficiency heating, air conditioning and defrosting distribution system built into dash
- LP leak and CO detectors
- Marine-type detachable power cord
- Remote battery disconnect
- Residential linoleum (galley area)
- Rubber tread entry steps
- Spacious overhead cabinetry w/ raised oak doors
- User-friendly hook-ups conveniently grouped in the driver side rear section of each model

### *Hurricane Class A*

##### Options

- 11.0 BTU ducted roof air conditioner (bedroom)
- 13.5 BTU ducted roof air conditioner (bedroom)
- 13" color TV w/remote (bedroom)
- 2nd auxiliary battery
- 4.0 KW Onan® generator
- 5.0 KW Onan® generator
- 7.0 KW Onan® generator
- 50-amp service
- Convection microwave w/3-burner range top
- Dash fans
- Day / Night shades
- Deluxe ceiling fan w/thermostat control
- Deluxe AM/FM stereo with CD player
- Free standing dinette w/4 chairs
- Heated holding tanks
- Hide-A-Bed sofa (33SL only)
- Hydraulic leveling jacks
- Outside shower
- Refrigerator w / ice maker
- Twin beds with nightstand
- Video cassette recorder
- Wheel liners

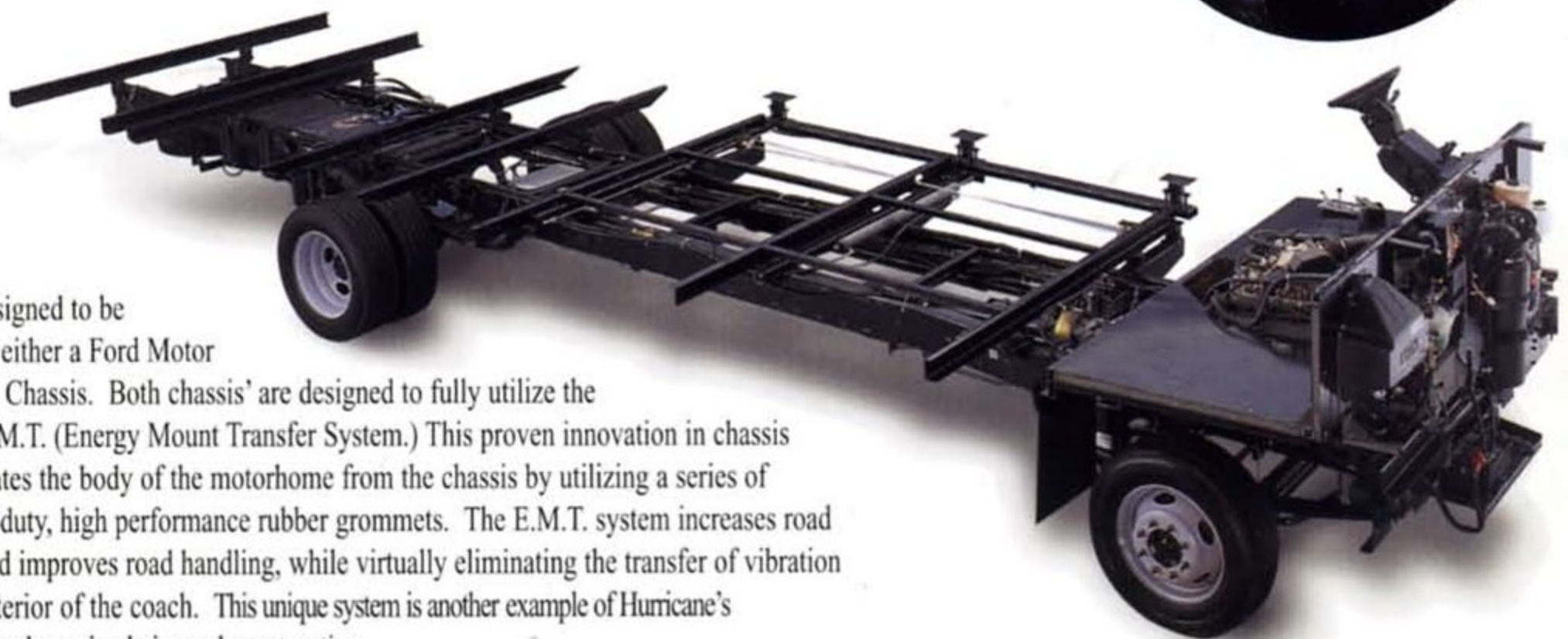


2000 HURRICANE CLASS A	29D	30Q	33B	33SL	34K
Engine - Ford 6.8L	V10	V10	V10	V10	V10
GVWR	15,700	15,700	18,000	18,000	18,000
GAWR (Front)	6,000	6,000	7,000	7,000	7,000
GAWR (Rear)	11,000	11,000	11,000	11,000	11,000
UVW	13,080	13,325	13,890	14,955	14,925
GCWR	26,000	26,000	26,000	26,000	26,000
NCC	2,620	2,375	4,110	3,045	3,075
Engine - Chevy 7.4L	Vortec	Vortec	Vortec	-	-
GVWR	14,800	14,800	16,500	-	-
GAWR (Front)	5,500	5,500	5,500	-	-
GAWR (Rear)	10,000	10,000	11,000	-	-
UVW	12,110	12,285	13,550	-	-
GCWR	19,000	19,000	21,000	-	-
NCC	2,690	2,515	2,950	-	-
Wheel Base	190"	190"	226"	216"	228"
Exterior Length (w/o ladder)	30'11"	31'5"	34'3"	33'9"	35'0"
Exterior Height w/ A/C	11'3"	11'3"	11'3"	11'3"	11'3"
Exterior Width	99"	99"	99"	99"	99"
Interior Width	96"	96"	96"	96"	96"
Interior Height	79 3/4"	79 3/4"	79 3/4"	79 3/4"	79 3/4"
Awning Size	16'0"	16'0"	18'0"	16'0"	18'0"
Fuel Ford/Chevy (Gal.)	75/60	75/60	75/75	75/-	75/-
LPG (Pounds)	79	79	79	79	79
Fresh Water (Gal.)	58	58	58	58	58
Waste Water (Gal.)	30	30	30	30	30
Gray Water (Gal.)	44	44	44	44	44
Furnace BTU's	31,000	31,000	31,000	31,000	31,000

Product information, specifications and photography in this brochure were as accurate as possible at time of printing. Since we continually strive to improve our products, actual products may differ. Prices and specifications are subject to change without notice. All capacities are approximate and dimensions are nominal. Some features or options may be different or unavailable in Canada.

**Vehicle Loading**-Every effort has been made to provide the greatest number of options for the recreation vehicle owner. Along with these choices comes the responsibility to manage the loads that are imposed by the choices so that they remain within the manufacturer's specified chassis weight limits. Do not overload the recreation vehicle.

**Dry weights** based on standard features; optional equipment not included. Net carrying capacity (NCC) determined by subtracting unloaded vehicle weight (UVW) from gross vehicle weight (GVWR) and includes fluids, options and cargo. Liquid capacities and weights are approximations only.



Most models are designed to be manufactured on either a Ford Motor Company or Workhorse Chassis. Both chassis' are designed to fully utilize the Four Winds patented E.M.T. (Energy Mount Transfer System.) This proven innovation in chassis design completely isolates the body of the motorhome from the chassis by utilizing a series of carefully placed, heavy-duty, high performance rubber grommets. The E.M.T. system increases road comfort and stability and improves road handling, while virtually eliminating the transfer of vibration and road noise to the interior of the coach. This unique system is another example of Hurricane's state-of-the-art technology and superior design and construction.

### YOUR LOCAL DEALER

### THOR'S "2 + 2" WARRANTY

2 year limited structural warranty and  
2 years on major components



This brochure is printed on recycled paper as part of Thor's corporate effort to minimize waste and conserve our natural resources. We know you will join us in this effort to maintain North America's great outdoors. For who appreciates the natural beauty of our open spaces more than an RV'er?



# Hurricane

FOUR WINDS INTERNATIONAL

P.O. Box 1486 • Elkhart, IN 46515-1486

(219)266-1111 • Fax (219)294-8971

www.fourwinds-rv.com