

*Southwind*<sup>®</sup>

2 0 0 1

**FLEETWOOD.RV**

**SEE WHERE  
IT TAKES YOU**



# Celebrate

When was the last time you truly appreciated a friendship?

When you could look into the face of sincerity. Feel the pride of knowing such undeniable character. Celebrate the offering of a bent ear and words of wisdom.

Thinking of how complete life seems to be just now.

Because of your friend.



*Convenient under-dinette storage utilizes space effectively and allows you to stow additional items.*



*Enjoy this unique galley with backsplash, range and sink covers, and countertop of solid Corian®.*

*Style abounds in the Southwind® with glass and brass decor lighting, select woods, and beautifully designed fabric.*

**Sense the magic** of Southwind's upscale features and appeal.

This home-on-the-go has residential-style cabinets in the galley featuring raised panel doors. Under the large, double stainless steel sink, is a convenient slide-out pantry. You can choose the optional 12 cu. ft. side-by-side Dometic® refrigerator with ice maker. Or, when you select the standard 8 cu. ft. model, you'll also have an amazing floor to ceiling slide-out pantry for lots of easy-to-reach canned goods. Then marvel at the beautiful, yet durable, Corian® for countertop/backsplash, flush-mounted range and sink covers.

As you gaze over the front of the luxurious cab, you'll realize your wish for convenient extras has come true. Start with the special center-mount dash drawer with flip-up storage. Then check out the passenger-side computer station,\* complete with hookups and an overhead compartment with a 20" Panasonic® TV. Enjoy it all as you relax in your reclining bucket seats.

All the comforts of home make taking up residence in the Southwind a breeze.

\* Not intended for use while in transit. Unsecured items are hazardous during traveling.

Dometic® is a registered trademark of AB Electrolux • Corian® is a registered trademark of DuPont of the United States • Panasonic® is a registered trademark of Matsushita Electric Corporation of America.



Celebrate



1



2



3

- 1** Southwind's 5.5kW ultra-quiet Onan® generator provides 110V service and comes with a 3-year warranty.
- 2** On the driver's side hookups are easily accessed and color-coded for quick setup. Adjacent is the wash station for convenient outside cleaning.
- 3** Every Southwind comes prewired for an optional Winegard® satellite dish.

- 4** Single key access to Southwind's entry door and compartments provides practical entry and convenient storage.
- 5** A coach-length, aluminum drip rail prevents discoloring of the sidewall.
- 6** Polyethylene storage compartments are non-corrosive to prevent rusting.

- 7** Practical, single die-cast metal paddle latches are flush-mounted for a luggage door system that's durable and easy-to-operate.
- 8** Southwind's windshield is designed to prevent moisture intrusion and provide an unobstructed panoramic view.

Taking the opportunity to savor a friendship brings flavor to life.

With a simple pat on the back or a smooth, lingering caress you are reminded of how important you are. You capture the priceless intimacy of the moment in one glance.

A glance that says just how you feel.

When was the last time you appreciated a friendship? We'll ask you when you get back.

# *the Season in a Southwind.*



*20" Panasonic® TV overhead, computer workstation, storage for maps, cupholder—this passenger compartment has it all.\**



*Southwind's contemporary-styled bolsters and throw pillows coordinate with the swag window treatment for an appealing place to stay.*



*The spacious wardrobe is deep enough for full-size hangers with room to spare.*

*Technology follows into the bedroom with your vanity that turns into a table—already wired for your computer and phone. (Available on the 35R.)*

**Ride like the wind** with Southwind's long-lasting value, style and open-road elegance.

As you catch sight of the contemporary exterior colors and design, you have a glimpse of what awaits you on the inside.

The bedroom tells the whole story of Southwind's style. The queen-size bed is adorned with color-coordinated bolsters and throw pillows, which is gracefully complemented by the matching over-the-pole swag window treatment.

After a long day, relax and enjoy bathing in the privacy of your frosted glass shower—complete with skylight. And you're assured of having ample hot water since there's a 6-gallon combination gas/electric hot water heater.

For over 50 years, Fleetwood has been designing RVs to complement your active lifestyle.

So ride like the wind on a carefree adventure in the exceptional Southwind.

\* Not intended for use while in transit. Unsecured items are hazardous during traveling.

## The Call of the Wind.

Feel the excitement as Southwind® arouses the senses, while keeping an eye out for your needs in this first-class motor home.

Powered by a strong Ford® heavy-duty chassis with 6.8L Triton™ V10 engine (Workhorse® chassis available on 32V) your ride will feel as though you're floating on air. It provides effortless towing of your vehicle, ATVs or personal watercraft, so you can bring along all the fun things you need.\* It includes features like lighted and easy-to-clean, insulated polyethylene luggage compartments. There's also a centrally-located utility compartment containing an exterior shower and color-coded control panel that's accessible for all your water and electrical hookups.

Take in breathtaking vistas of your travels with Southwind's extra-large, wrap-around windshield. The spacious, 35" driver's door adds an additional entry, making fill-ups convenient and leveling easier.

Cast your eyes across the cabin and admire a contemporary look of luxury and sophistication. There's colorfast nylon carpeting which leads up to the sleek and durable plank wood flooring in the galley.

So, when you're ready to lift your spirits, get in your Southwind and go wherever the wind takes you.



\* Check your owner manual(s) for towing safety, rules and guidelines.

Ford® is a registered trademark of the Ford Motor Company • Workhorse® is a registered trademark of Workhorse Custom Chassis • Triton™ is a trademark of the Ford Motor Company.

## Features for 2001 Southwind

**Our engineering may set us apart from the rest, but the things you'll notice most when you and your family take a trip, are the top-of-the-line features. Here are but a few of the items that make life on the road with Southwind memorable.**



*Practical, functional, and all within reach—convenient storage for maps and cupholders.*



*Southwind includes a convenient 35" driver's side door.*



*Make finding your way around the country easier with the optional satellite-connected VDO Dayton Model MS 5000 GPS navigation system, complete with software.*



*A standard electronic climate control system with dual A/C controls enables a separate climate in the front and rear of the coach.*

*Store food items in this roomy, shelved pantry.*



*For on-the-road convenience, you'll appreciate the optional residential-style washer/dryer (Optional on 36T and 36Z).*

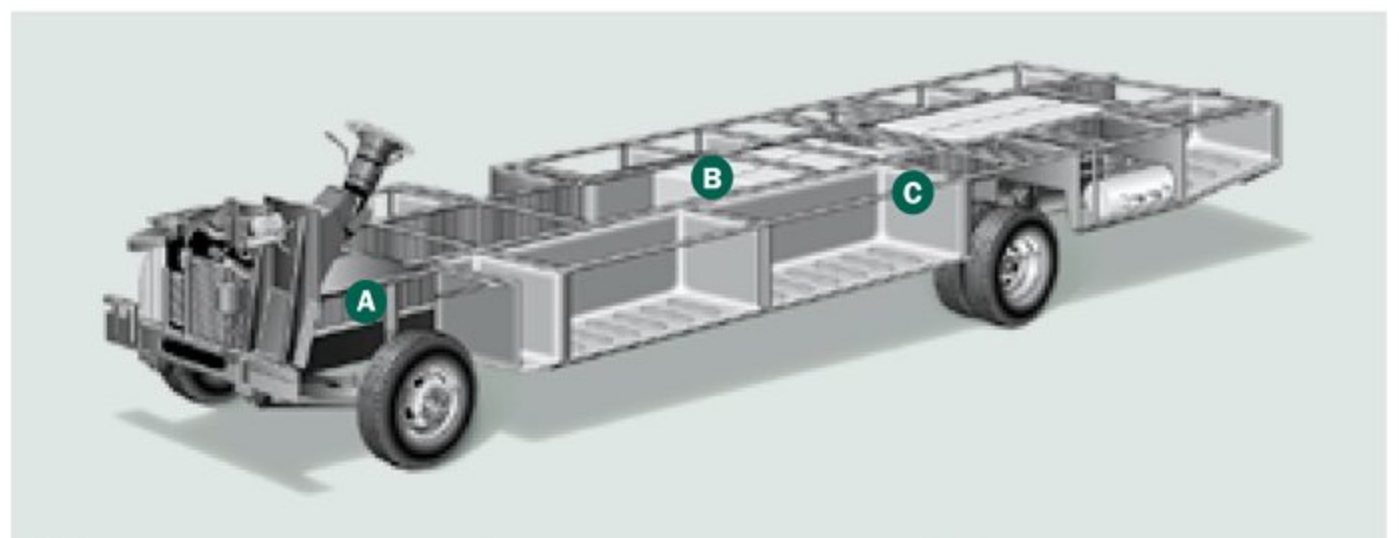


*Southwind's basement space includes lots of storage for your gear.*



## The Power Platform Makes the Difference

Southwind's quality begins long before the features come on board. We begin by building on our exclusive Power Platform, with Paco Beam, a unique truss design welded together using tubular steel that's durable, strong, and dependable. The result is a quiet, and nearly flawless ride, increased floor strength, and substantially more storage space below. An all-steel foundation further reduces stress loads on the sidewalls and minimizes chassis flex on uneven roads.



**A** Steel I-beams are welded the length of the chassis for enormous weight-bearing ability.

**B** Water tanks run horizontally down the center of the frame for balance.

**C** Beefy steel outriggers firmly cradle all exterior compartments and add stability.

*Drawing is for illustrative purpose only to highlight aspects of motor home construction. Actual motor home design depends on model and is subject to change.*

# 2001 Southwind Standard Features

## Appliances

- Front 20" Panasonic® TV In Overhead
- Smoke Detector/Alarm
- LPG Leak Detector/Alarm
- CO Detector/Alarm
- 6-Gallon, Quick-Recovery Water Heater with D.S.I. (Gas/Electric)
- 22" 3-Sealed Burner, High-Output Cooktop with Oven
- Light/Power Range Hood & Monitor Panel
- Folding Range Cover—Flush Mount Solid Surface Top
- Dual Roof High Efficiency A/C with Solar Panel
- Water Heater Bypass
- Porcelain Toilet with Water Saver
- Toilet Tank San-T-Flush™ System
- 8-cu.ft. Dometic® Double Door Refrigerator
- Single-Lever Galley Faucet
- Water Filter with Faucet
- Demand Water Pump with Filter
- Power Bath Vent
- TV Antenna
- Fan-Tastic® Power Roof Vent
- Fire Extinguisher
- Telephone Jack in Dash and Bedroom
- Rear Speakers in Bedroom

## Body Structure

- Vacubond Upper/Lower Floor
- Vacubond Walls with Smooth, High Gloss Exterior Fiberglass
- Aluminum Wall/Ceiling Framing
- Interlocking Aluminum Extrusions
- Radius Roof with Ducted A/C
- Rubber Roof
- Power Platform

## Electrical

- Patio Receptacle
- 120V/12V AC/DC Converter Central Electrical Panel
- 120V/12V Wire Raceways
- 3-Way Water Pump Switch
- 5.5kW Generator
- 30-amp Service
- Wall Switches
- ECC Climate Control
- Dual 6V/Deep-Cycle 218-amp House Batteries
- TV/VCR Ready

## Exterior

- Fiberglass Front/Rear Cap
- Swing-Down Engine Access Door
- Fiberglass Front Quarter Panels
- Fiberglass Rear Wheel Well Trim
- Aerodynamic Styling
- Entry Door with Deadbolt Latch
- Slider Windows in Living Room

## Exterior (cont.)

- Torque Windows in Bedroom
- Aluminum Front Grille
- Utility Compartment with Exterior Shower
- 4-Point Manual Hydraulic Leveler
- Roof Ladder
- Exterior Assist Handle
- Heated Remote Rear View Mirrors
- Park Cable Receptacle
- Awning Rail/Drip Molding (Both Sides)
- Power Entry Step
- Porch Light
- 3 Colorway Graphics to Match Decor
- Lower Body Accent Paint

## Exterior Automotive

- Large, Curved Aerodynamic Windshield
- Undercoating
- Stainless Steel Wheel Simulators
- Mud Flaps
- Underhood Utility Light
- Steel Surface on Bulkhead
- Trailer Hitch with 7-Point Electrical Hook-Up
- Halogen Headlights
- Fog Lights
- Rear Vision Camera
- Single Motor Windshield Wipers with Wet Arm

## Exterior Storage

- Insulated Luggage Doors
- Single Paddle/Metal Latches
- Continuous One-Piece Bulb Seal
- Hidden, Stainless Steel Latch Rods
- Gas Lift Strut Supports
- Lighted Compartments
- Steel Seal Frames
- Pass-Through Storage

## Interior

- 3 Interior Decors
- Woven Jacquard Feature Fabrics
- Skylight in Tub/Shower
- Brentwood Cherry Wood Grain
- Wall-to-Wall Nylon Carpet with Carpet Pad
- Vinyl Floor Covering—Galley & Bath
- Wood Drawers
- Roller Guide Drawer Slides with Transit Ship Locks
- Radius Corner Cabinetry
- Brushed Chrome Finish Cabinet Hardware
- Driver/Passenger & Lounge Reclining Bucket Seats
- 3-Point Front Seat Belts
- Vinyl Pull Shade—Entry
- Bedspread with Decor Pillows
- Restonic® Deluxe Pillow Top Innerspring Mattress
- Alder-Stained Cherry Cabinet Doors & Drawers

## Interior (cont.)

- Corian® Galley Countertops
- Headboard
- Beveled Mirrors
- Slide-Out Dinette Bins with Latches
- Cedar Lining in Wardrobe
- Window Coverings—Day/Night Shades
- Alder-Stained Cherry Bath Door Trims
- Alder-Stained Cherry Wood Trim Table Tops
- Trash Basket in Galley
- Molded Tub/Shower ABS with One-Piece Enclosure
- Chrome Bath Accessories
- Residential Seat Styling
- Entry Rail (Oak & Chrome)
- Alder-Stained Cherry Raised Panel Cabinet Doors
- Adjustable Cabinet Shelves (Selected Cabinets)
- Sink Cutting Board
- Solid Divider Doors
- Large, Double Stainless Steel Sink

## Interior Automotive

- Intermittent Wiper Control
- Double-Swivel Sun Visors with Map Pockets
- Driver/Passenger Side Window Shade
- Engine Cover Convenience Tray
- Driver's Door with Manual Crank Window Lift
- Cruise Control
- Low Profile Engine Cover
- Radio with Cassette AM/FM/MX—Electronic Tuning
- Tilt Steering Wheel
- Tilt-up Instrument Panel
- Soft Surface Automotive Dash
- Computer Workstation in Dash
- Auxiliary Start Circuit
- Battery Disconnect System
- Auto A/C Heater Combo
- Radio Switch—Main/Auxiliary
- Driver/Passenger Captain's Chairs with Reclining Back/Slide Controls

## Interior Lighting

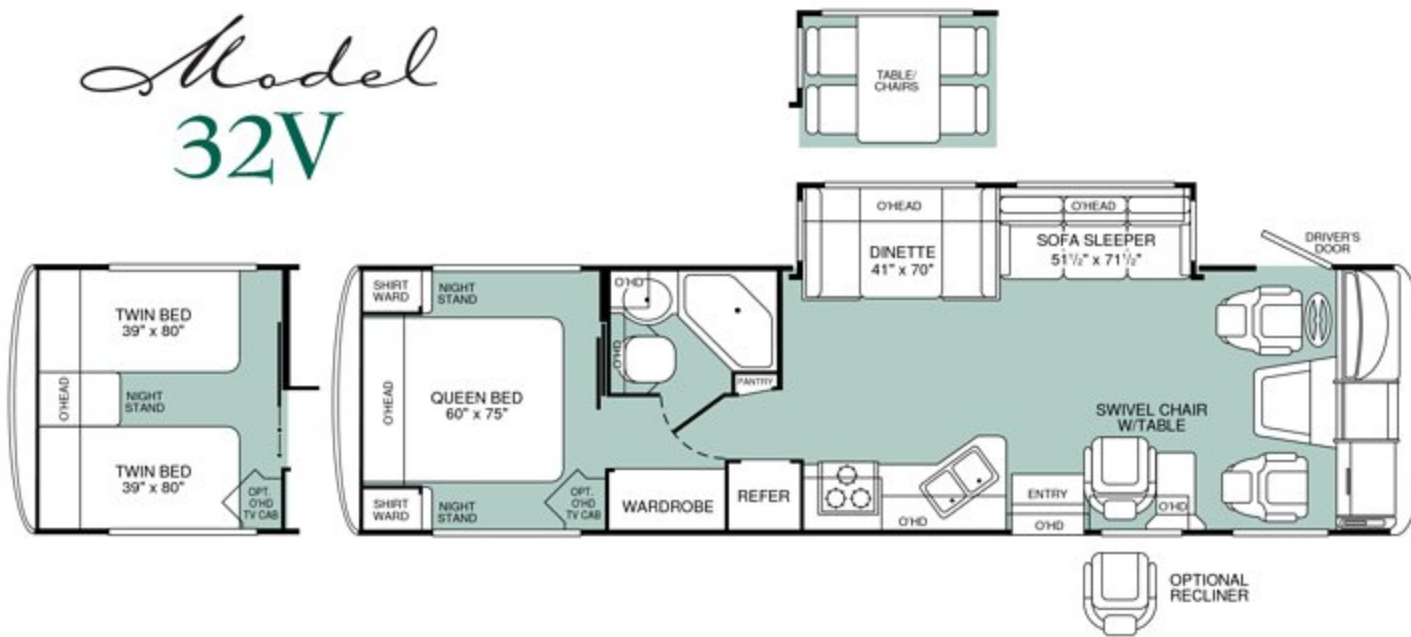
- Wardrobe Lighting
- Fluorescent Ceiling with Dual Bulb
- Decor Lighting
- Incandescent Lighting
- Wall Sconces
- Make-Up Lights in Bath

## Platform Construction

- Basement Floor Configuration
- Heated Water & Holding Tank Compartments
- Polyethylene Luggage Compartment Boxes
- Paco Beams
- Steel Outriggers
- Box Vibration Isolators

# 2001 Southwind Floor Plans

## Model 32V



- Island Queen Bed or Optional Twin Beds
- Dual Shirt Wards and Nightstands
- Swivel Chair with Flip-up Table or Optional Recliner
- Fully-Enclosed Bathroom
- Living Room Slide-Out with Sofa Sleeper
- Dinette or Optional Table with Chairs

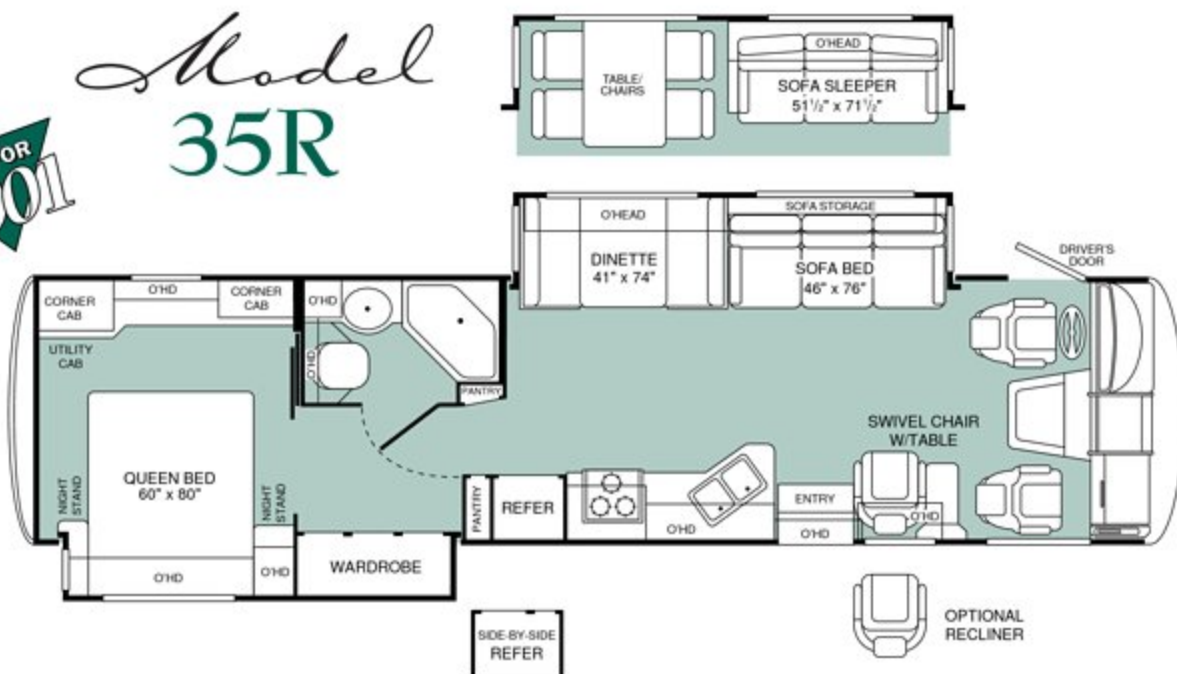
## Model 34N



- Optional Queen Bed Slide-Out and Vanity/Computer Desk
- Full-Length Wardrobe
- Swivel Chair with Flip-up Table
- Optional Side-by-Side Refrigerator
- Living Room Slide-Out with Sofa Sleeper
- Dinette or Optional Table with Chairs

NEW FOR 2001

## Model 35R



- Double Length Slide-Out w/Island Queen Bed and Wardrobe
- Bedroom Feature Cabinets with Integrated Vanity
- Swivel Chair with Flip-up Table or Optional Recliner
- Optional Side-by-Side Refrigerator
- Dinette/Living Room Slide-Out with Sofa Bed
- Optional Table with Chairs
- Optional Sofa Sleeper

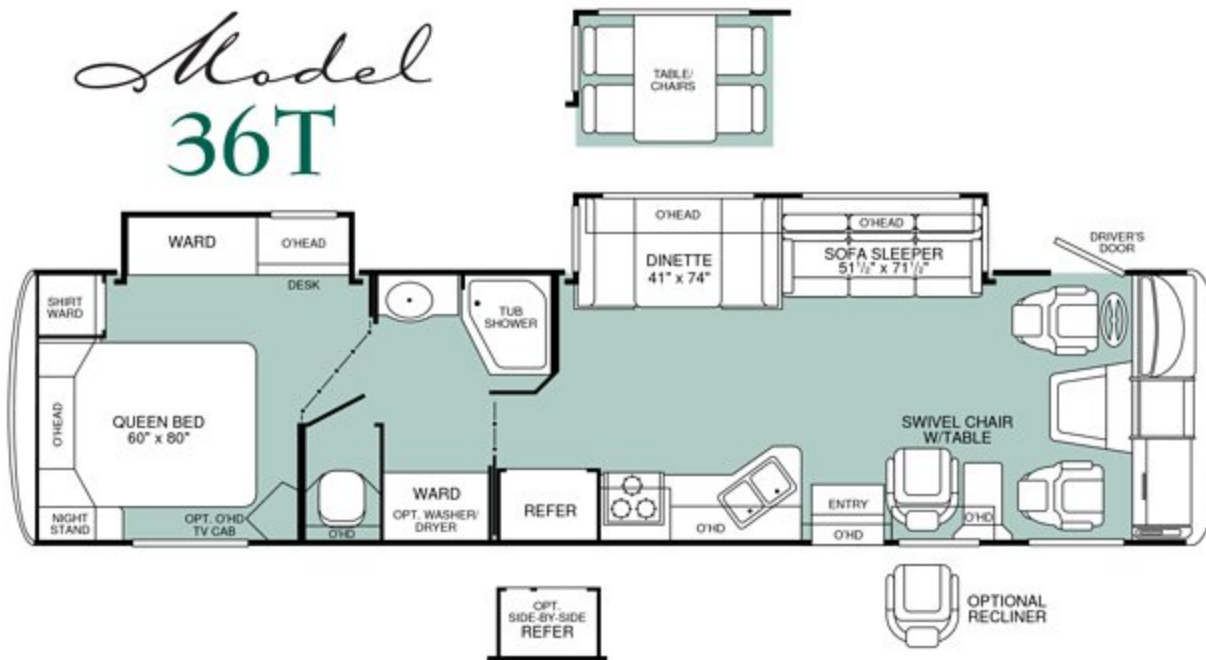


# Model 35S



- Island Queen Bed
- Optional Twin Beds
- Fully-Enclosed Bathroom
- Swivel Chair with Flip-up Table or Optional Recliner
- Optional Side-by-Side Refrigerator
- Dinette/Living Room Slide-Out with Sofa Bed
- Optional Table with Chairs
- Optional Sofa Sleeper

# Model 36T



- Island Queen Bed
- Wardrobe Slide-Out with Desk
- Private Toilet
- Swivel Chair with Flip-up Table or Optional Recliner
- Optional Washer/Dryer
- Optional Side-by-Side Refrigerator
- Living Room Slide-Out with Sofa Sleeper
- Dinette or Optional Table with Chairs

# Model 36Z



- Optional Queen Bed Slide-Out and Vanity/Computer Desk
- Full-Length Wardrobe
- Swivel Chair with Flip-up Table
- Optional Washer/Dryer
- Optional Side-by-Side Refrigerator
- Galley/Living Room Slide-Out with Sofa Bed
- Dinette or Optional Table with Chairs

# Options

## 2001 Southwind Options

NEW FOR  
2001

Appliances	32V	34N	35R	35S	36T	36Z
Multiple CD Changer	OPT	OPT	OPT	OPT	OPT	OPT
Rear 13" Panasonic® Television with Remote	OPT	OPT	OPT	OPT	OPT	OPT
Panasonic® VCR/VHS	OPT	OPT	OPT	OPT	OPT	OPT
12 cu. ft. Side-by-Side Dometic® Refrigerator with Ice Maker	N/A	OPT	OPT	OPT	OPT	OPT
8 cu. ft. Dometic® Double Door Refrigerator with Ice Maker	OPT	OPT	OPT	OPT	OPT	OPT
1 cu. ft. Sharp® Microwave	STD	STD	STD	STD	STD	N/A
Sharp® Convection Microwave	OPT	OPT	OPT	OPT	OPT	STD
Sharp® CSA Convection Microwave	OPT	OPT	OPT	OPT	OPT	OPT
Washer/Dryer	N/A	N/A	N/A	N/A	OPT	OPT
Furnace 20M BTU/34M BTU Dual	N/A	N/A	N/A	STD	N/A	STD
Furnace 20M BTU/20M BTU Dual	N/A	STD	STD	N/A	STD	N/A
Furnace 34M BTU	STD	N/A	N/A	N/A	N/A	N/A
DSS Manual Lift/Satellite Dish	OPT	OPT	OPT	OPT	OPT	OPT
Electrical	32V	34N	35R	35S	36T	36Z
7.0kW Generator	OPT	OPT	OPT	OPT	OPT	OPT
CSA Package	OPT	OPT	OPT	OPT	OPT	OPT
Exterior	32V	34N	35R	35S	36T	36Z
Awning—USA	OPT	OPT	OPT	OPT	OPT	OPT
Exterior Automotive	32V	34N	35R	35S	36T	36Z
Ford® Chassis 6.8L Triton™ V10 Engine	OPT	STD	STD	STD	STD	STD
Workhorse® Chassis 7.4L Vortec Engine	OPT	N/A	N/A	N/A	N/A	N/A
Interior	32V	34N	35R	35S	36T	36Z
Folding Shower Door	STD	N/A	N/A	N/A	N/A	N/A
Glass Shower Door with Chrome Frame	N/A	STD	STD	STD	STD	STD
Slide-Out Pantries with Transit Locks	STD	STD	STD	STD	STD	N/A
Lounge Recliner	OPT	OPT	OPT	OPT	OPT	OPT
TV Cabinet—Rear Bed	OPT	N/A	N/A	N/A	OPT	N/A
Oak Plank Wood Flooring at Galley	OPT	OPT	OPT	OPT	OPT	OPT
Dinette Table w/Free-Standing Chairs	OPT	OPT	OPT	OPT	OPT	OPT
Interior Automotive	32V	34N	35R	35S	36T	36Z
CB Radio Ready	OPT	OPT	OPT	OPT	OPT	OPT
Stereo AM/FM with CD player	OPT	OPT	OPT	OPT	OPT	OPT
Driver/Passenger Leather Seats with Power Driver	OPT	OPT	OPT	OPT	OPT	OPT

**IMPORTANT—PLEASE READ:** Product information and photography included in this brochure were as accurate as possible at the time of publication. For the most current product information and changes, please visit our website at [www.fleetwood.com](http://www.fleetwood.com) or contact your local Fleetwood dealer. Subsequent refinements may be evident in the actual product. Prices and specifications are subject to change without notice. All weights, fuel, liquid capacities and dimensions are approximate. Fleetwood has designed its recreational vehicles to provide a variety of uses for its customers. Each vehicle features optimal seating, sleeping, storage and fluid capacities. The user is responsible for selecting the proper combination of loads to ensure that the recreational vehicle's capacities are not exceeded.

Sharp® is a registered trademark of Sharp Electronics • Flexsteel® is a registered trademark of Flexsteel.

## What happens when you've been setting the standards of RV quality for over 50 years?

**You set them even higher. Our customers expect us to.** As a matter of fact, first-time RV buyers, who bought other manufacturers' RVs, tell us they wish they'd spent a little bit more for better quality. That's why experienced buyers are more likely to buy a Fleetwood RV.\* That's also why Fleetwood RV invests in people, systems and manufacturing quality that are second to none. This may make us a bit more expensive than some brands, but satisfied Fleetwood RV owners know we're worth it.

**People...** We hire engineers, designers and drafters from leading automotive design schools. Our front-line associates are well-trained, quality-minded men and women who take pride in their work. No other manufacturer has a larger, more professional team behind their products.



**Systems...** Our product development team uses state-of-the-art, computer-assisted-design (CAD)

technology to build in fit and finish right from the drawing board. Each product is meticulously documented with over 3,500 pages of engineering drawings. A computerized bill of materials details over 20,000 pieces that go into your motor home. And, a vehicle specific *Electronic Parts Catalog* shows 600–800 common parts... so, if you need a new part, your authorized Fleetwood RV service dealership knows exactly what you need. Some manufacturers may not invest the extra time and money to accurately document their products, which could cost you plenty in headaches and hassles down the road.

\*Angus Reid RV Market Segmentation Study, 1998

# Specifications

## 2001 Southwind Specifications

NEW FOR 2001

Ford® Chassis	32V	34N	35R	35S	36T	36Z
Engine LD	6.8L	6.8L	6.8L	6.8L	6.8L	6.8L
Wheelbase	208"	208"	228"	228"	228"	228"
GVWR lbs/kgs (1)	20,500/9,299	20,500/9,299	20,500/9,299	20,500/9,299	20,500/9,299	20,500/9,299
Front GAWR lbs/kgs (2)	7,000/3,175	7,000/3,175	7,000/3,175	7,000/3,175	7,000/3,175	7,000/3,175
Rear GAWR lbs/kgs (2)	13,500/6,124	13,500/6,124	13,500/6,124	13,500/6,124	13,500/6,124	13,500/6,124
Base Weight lbs/kgs (3)	15,200/6,895	16,100/7,303	16,720/7,584	16,200/7,348	16,750/7,598	16,400/7,439
GCWR lbs/kgs (4)	25,500/11,567	25,500/11,567	25,500/11,567	25,500/11,567	25,500/11,567	25,500/11,567
Hitch Rating/Tongue Weight lbs	5,000/500	5,000/500	5,000/500	5,000/500	5,000/500	5,000/500
Hitch Rating/Tongue Weight kgs	2,268/227	2,268/227	2,268/227	2,268/227	2,268/227	2,268/227
Fuel Capacity gal/lbs (6.1lbs/gal)	75/457	75/457	75/457	75/457	75/457	75/457
Workhorse® Chassis	32V	34N	35R	35S	36T	36Z
Engine LD	7.4L	N/A	N/A	N/A	N/A	N/A
Wheelbase	208"	N/A	N/A	N/A	N/A	N/A
GVWR lbs/kgs (1)	18,000/8,165	N/A	N/A	N/A	N/A	N/A
Front GAWR lbs/kgs (2)	6,000/2,722	N/A	N/A	N/A	N/A	N/A
Rear GAWR lbs/kgs (2)	12,000/5,443	N/A	N/A	N/A	N/A	N/A
Base Weight lbs/kgs (3)	14,900/6,759	N/A	N/A	N/A	N/A	N/A
GCWR lbs/kgs (4)	21,000/9,525	N/A	N/A	N/A	N/A	N/A
Hitch Rating/Tongue Weight lbs	3,500/350	N/A	N/A	N/A	N/A	N/A
Hitch Rating/Tongue Weight kgs	1,588/113	N/A	N/A	N/A	N/A	N/A
Fuel Capacity gal/lbs (6.1lbs/gal)	75/457	N/A	N/A	N/A	N/A	N/A
Dimensions	32V	34N	35R	35S	36T	36Z
Length (5)	32' 10"	34' 9"	35' 9"	35' 9"	36' 7"	36' 7"
Height (with A/C)	11' 11"	11' 11"	11' 11"	11' 11"	11' 11"	11' 11"
Width (maximum) (6)	102"	102"	102"	102"	102"	102"
Interior Height (maximum)	79"	79"	79"	79"	79"	79"
Interior Width (maximum)	96"	96"	96"	96"	96"	96"
Liquid Capacities (Gallons/Liters)	32V	34N	35R	35S	36T	36Z
Fresh Water Holding Tank (8.3 lbs/gal)	80/303	80/303	70/265	80/303	70/265	70/265
Grey Water Holding Tank (8.3 lbs/gal)	58/220	58/220	58/220	58/220	58/220	58/220
Black Water Holding Tank (8.3 lbs/gal)	42/159	44/167	42/159	42/159	47/178	47/178
Appliance LPG Tank (4.5 lbs/gal) (WC) (7)	25/95	25/95	25/95	25/95	25/95	25/95
Water Heater Tank (8.3 lbs/gal)	6/23	6/23	6/23	6/23	6/23	6/23
Metric Conversions:	Feet to meters: ft x .304 = meters		Lbs to kgs: lbs x .454 = kgs		Gallons to liters: gal x 3.78 = ltrs	

1. **GVWR (Gross Vehicle Weight Rating):** Means the maximum permissible loaded weight of the motor home. The GVWR is equal to or greater than the sum of the unloaded vehicle weight plus the net carrying capacity.
2. **GAWR (Gross Axle Weight Rating):** Means the maximum permissible loaded weight a specific axle is designed to carry.
3. **BW (Base Weight):** Means the weight of the motor home without fuel, options, water, cargo or passengers.

4. **GCWR (Gross Combined Weight Rating):** Means the value specified by the motor home manufacturer as the maximum allowable loaded weight of this motor home with its towed vehicle. Towing and braking capacities may differ. Refer to Fleetwood and chassis manufacturer manuals for complete information.
  5. Length taken from front bumper to rear bumper.
  6. Excludes safety equipment and awnings.
  7. Tank Manufacturer's listed water capacity (WC). Actual LPG capacity is 80% of water listing as required by the safety code.
- N/A: Information not available at the time of publication.

TuffPEX™ is a trademark of Uponor.

**Manufacturing...** We only do what we know we're best at — building a quality-finished motor home. When it comes to the appliances, doors, windows, and furniture, we partner with other recognized leaders to do what they know best... top names like Sharp,® Panasonic,® Dometic,® Restonic® and Flexsteel.® Some manufacturers will tell you partnering like this makes us final assemblers. We call it working smarter to bring you more value.



**We build our cabinets and secure them to the floor before the walls go up to add strength, and help eliminate noises.**

**Quality...** The quality outside reflects the quality inside — places where you can't see it, but where it really counts. For example, we use vacubonded sidewall construction that's required for the special needs of a motor home. Our new TuffPEX™ plumbing system is able to withstand temperatures as low as -40° F. And now offered on our mid- to high-end Class A motor homes, a new, revolutionary exterior sidewall material which contains no wood products to guard against swelling, rotting and delamination. Before any unit rolls off the line at each of our plants, it goes through a documented checklist containing hundreds of items specific to that product. It won't leave the plant until it has met our high standards. And, the list goes on.

**For strength, noise reduction and insulation, composite sidewalls and floors are constructed aluminum, plywood and polystyrene foam.**



From the drawing board to the assembly line, we will continue to develop and manufacture quality products for our customers.

**Fleetwood RV...** Setting standards beyond your expectations.

# Fleetwood's Far-Reaching Warranty and Service Program



## Limited One-Year/ Three-Year Warranty

Leaving the Fleetwood dealership after you've purchased your RV doesn't mean leaving each dealer's commitment to your satisfaction behind.

OWNERCARE, Fleetwood's extensive warranty and service program, provides one/three year(s) of dedicated customer satisfaction. OWNERCARE stands out as one of the RV industry's most comprehensive programs and includes systems and applications, construction, no deductible and no service charge. See your nearest Fleetwood dealer for a full explanation of benefits and restrictions.

## Fully Transferable

At Fleetwood RV, we're confident in our products and don't hesitate to stand behind them. Your newly purchased Fleetwood RV comes with one of the industry's most comprehensive warranties, fully transferable for the first 12 months.

## National Coverage

Have a question about your new Fleetwood RV? We've got it covered. The nation's largest trained dealer network—ready, willing and able to provide you with the services you need to make every moment of owning your RV enjoyable. Over 1,100 Fleetwood dealers throughout the U.S. and Canada are available to you. With national coverage, peace of mind and complete satisfaction are just a phone call away.



## An Extra Thank You

Ask your dealer about your Thousand Trails complimentary 30-day membership certificate. It's your chance to get going in your new RV and enjoy some scenic camping, plus our way of thanking you again for your purchase of a Fleetwood RV. For more information on your complimentary membership certificate, please call

1-800-205-0606. Happy (Thousand) Trails!



# Fleetwood RV and Motor Sports: A Winning Team



Three wide in the first turn. 200 miles per hour on the back straight. Passing for the lead through the short chute. Nothing beats the excitement of NASCAR racing. Every year thousands of NASCAR fans and Fleetwood RV owners travel to races to support their favorite drivers, enjoy time with family and rekindle friendships.

RVs have become as much a part of motorsports as pit row and the checkered flag. That's why Fleetwood RV is a proud sponsor of 1999 Winston Cup Champion Dale Jarrett and the Robert Yates Racing Team.

As the number one RV manufacturer\* in the country, our winning ways continue. Fleetwood RV is now the "Official Recreational Vehicle" at nine

\*According to Statistical Surveys Jan. '99-Dec. '99

International Speedway Corporation racetracks.\*\* And for Fleetwood owners, emergency service crews are available at select tracks to ensure a trouble-free weekend. While you're enjoying the race, be sure to look for the Fleetwood RV Prize Patrol and go home with some exciting giveaways.

So this weekend, pack up your friends and family and experience the thrill of cheering on Dale firsthand, in first-class style, with Fleetwood RV.

\*\* Daytona International Speedway, Darlington Raceway, Talladega Superspeedway, California Speedway, Richmond International Speedway, Michigan Speedway, Watkins Glen International Speedway, Phoenix International Raceway, Homestead-Miami Speedway.



[www.fleetwood.com](http://www.fleetwood.com)

Visit our website to find a dealer near you, learn more about other Fleetwood products or purchase Fleetwood branded apparel. Or call 1-800-444-4905.

FOR CUSTOMER ASSISTANCE, call toll free 24 hours a day at 1-800-322-8216, visit our website, or you may write to Fleetwood Enterprises, Inc., P.O. Box 7638, Riverside, CA 92513-7638.

**IMPORTANT—PLEASE READ:** Product information and photography included in this brochure were as accurate as possible at the time of publication. For the most current product information and changes, please visit our website at [www.fleetwood.com](http://www.fleetwood.com) or contact your local Fleetwood dealer. Subsequent refinements may be evident in the actual product. Prices and specifications are subject to change without notice. All weights, fuel, liquid capacities and dimensions are approximate. Fleetwood has designed its recreational vehicles to provide a variety of uses for its customers. Each vehicle features optimal seating, sleeping, storage and fluid capacities. The user is responsible for selecting the proper combination of loads to ensure that the recreational vehicle's capacities are not exceeded.

**FLEETWOOD RV**

America's Favorite Recreational Vehicles

Fleetwood Enterprises, Inc., RV Marketing, P.O. Box 7638, Riverside, CA 92513-7638

Your local Fleetwood RV dealer is:



This award certifies that Fleetwood has met Ford's rigid quality standards for utilizing a Ford chassis.

# Interior & Exterior Colors

Your motor home takes you to new adventures every day.

And since this home will be an enduring part of your life, we offer a selection of colors and textures that are a fine blend of classic and contemporary style.

We search to obtain quality fabrics that are elegant, yet durable, to keep up with your active lifestyle.

Year after year, the look will be as welcoming to you as it is to your guests.

## Silver Sage



## Iridescent Amethyst



## Frothy Frappachino



FLEETWOOD FAMILY FUN...  
**THE JOURNEY CONTINUES**

Where do you want to be? The possibilities are almost limitless. From mini motor homes to luxury coaches, from gas to diesel performance, there's a Fleetwood motor home to fulfill your dreams.

We know exactly how you feel, realizing there's a whole new world to experience. That's why we made sure you can choose from the broadest selection of brands and floor plans the world has to offer. It's no wonder that one out of four motor homes sold is a Fleetwood.\*

This is your journey. Take it for a spin.

\*According to Statistical Surveys Jan.'99–Dec.'99

**FLEETWOOD RV**

© 2000 Fleetwood Enterprises, Inc.  
Inventory Control Number SW01B1/1st Edition 7/00

