

2 0 0 1 T R A V E L T R A I L E R S

Aluma-Lite®

A HIGHER LEVEL OF RECREATION AND ENJOYMENT.



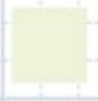




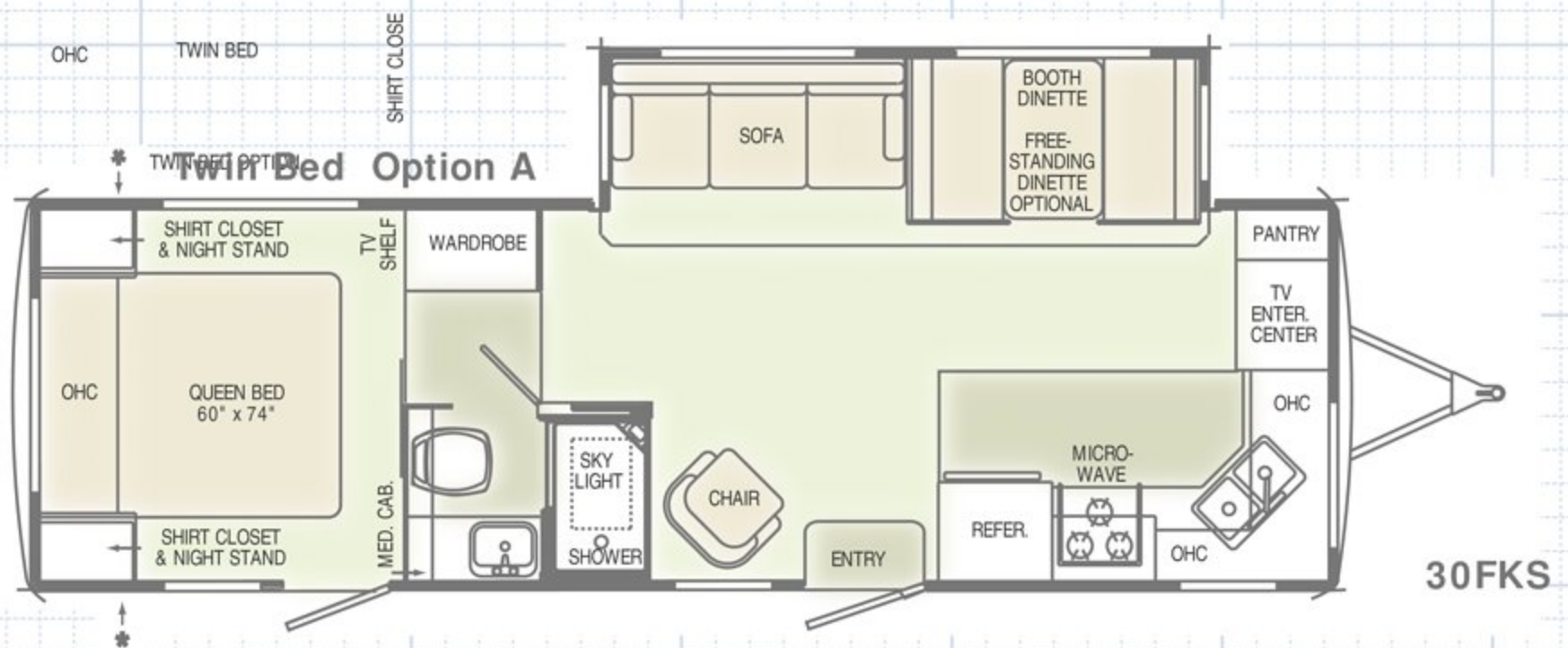
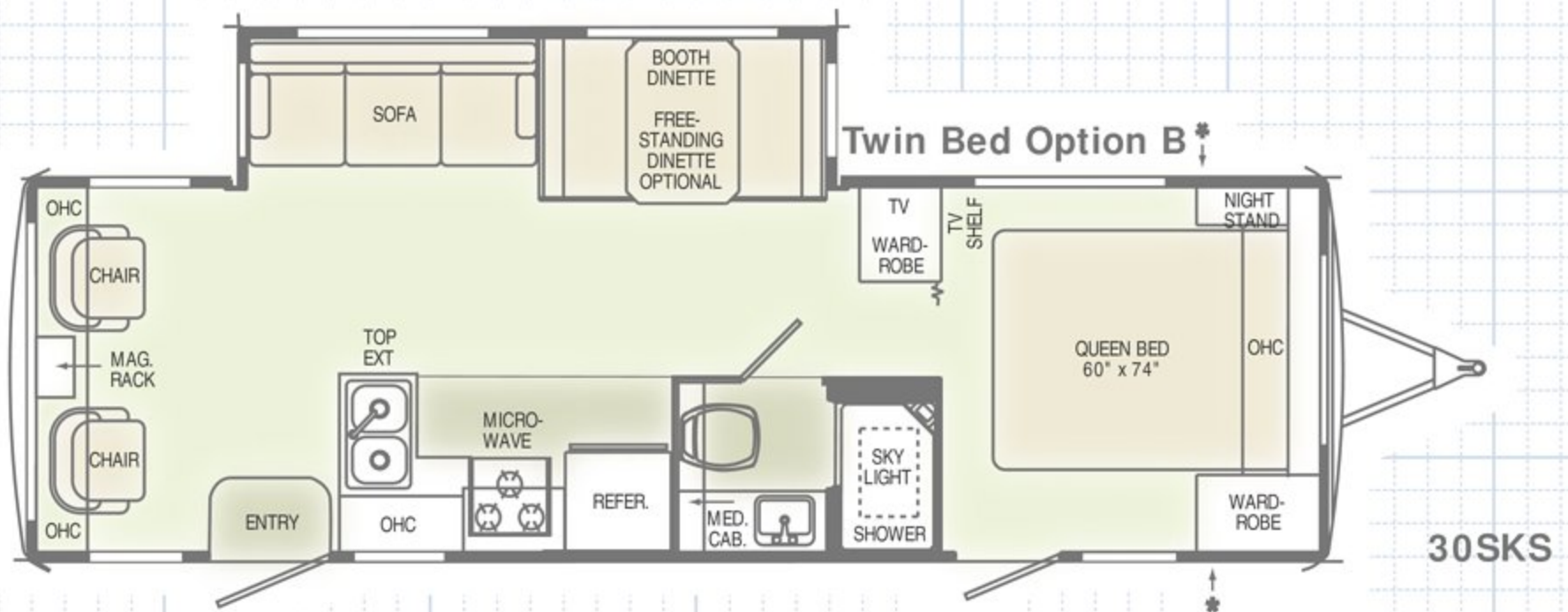
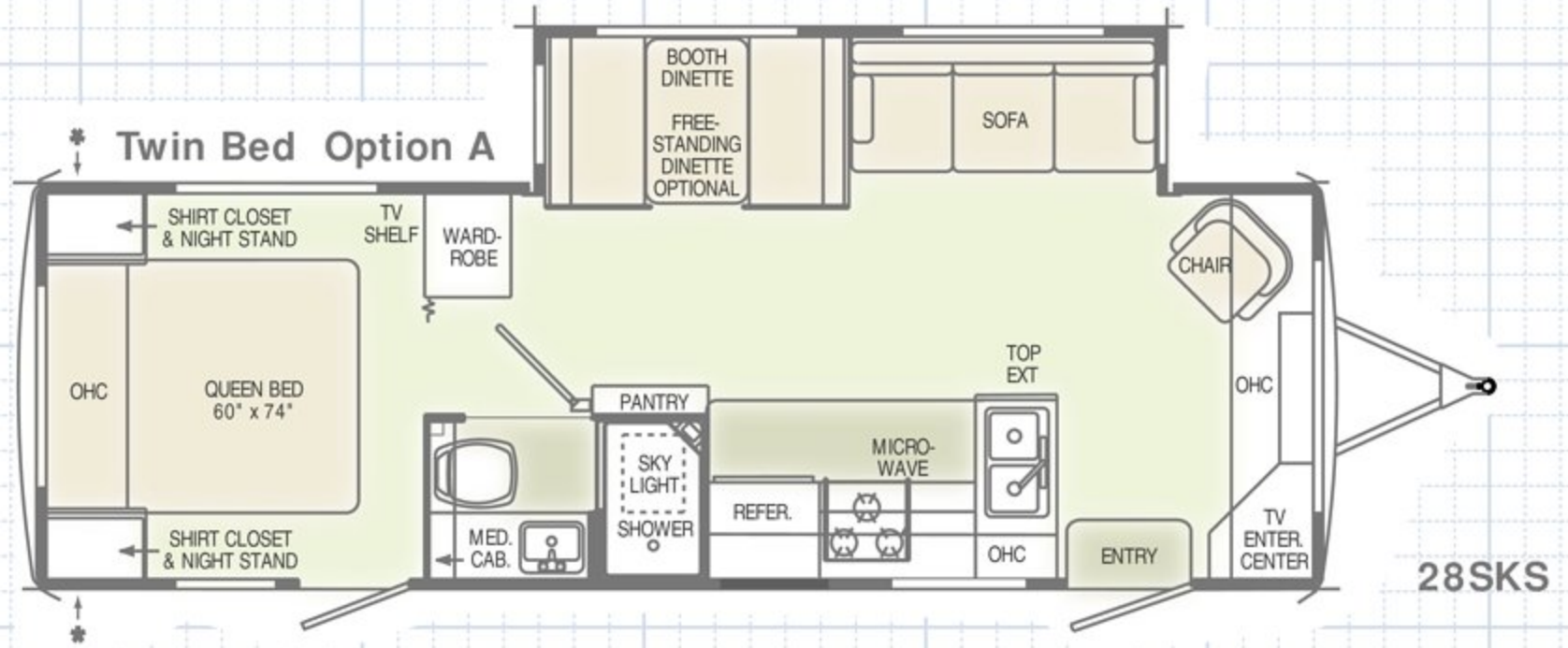
LEFT — (Top to bottom)
Western Oak cabinets are
standard, Colony Oak and
Walnut are optional.
BELOW — Decor choices
are Mahogany, Coral Coast,
Sea View, and Emerald



2001 Aluma-Lite® FLOOR PLANS

AlumaLite TT 28SKS

-  Carpet
-  Linoleum
-  Outside Storage

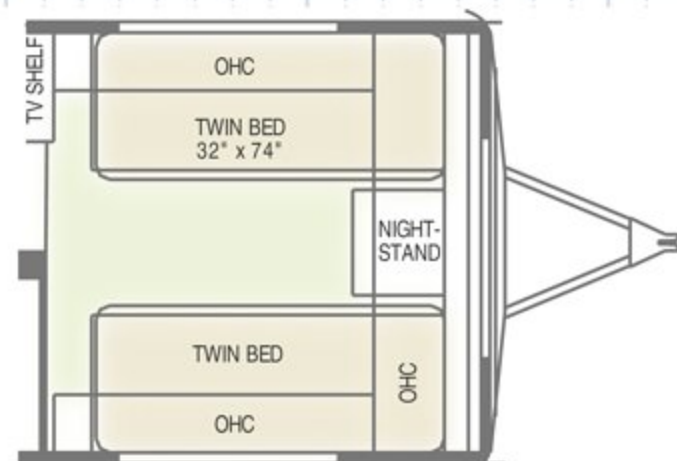
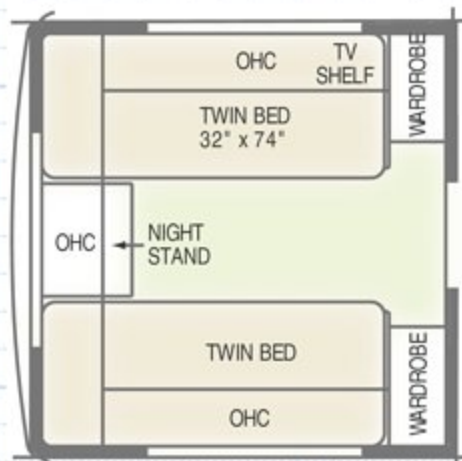
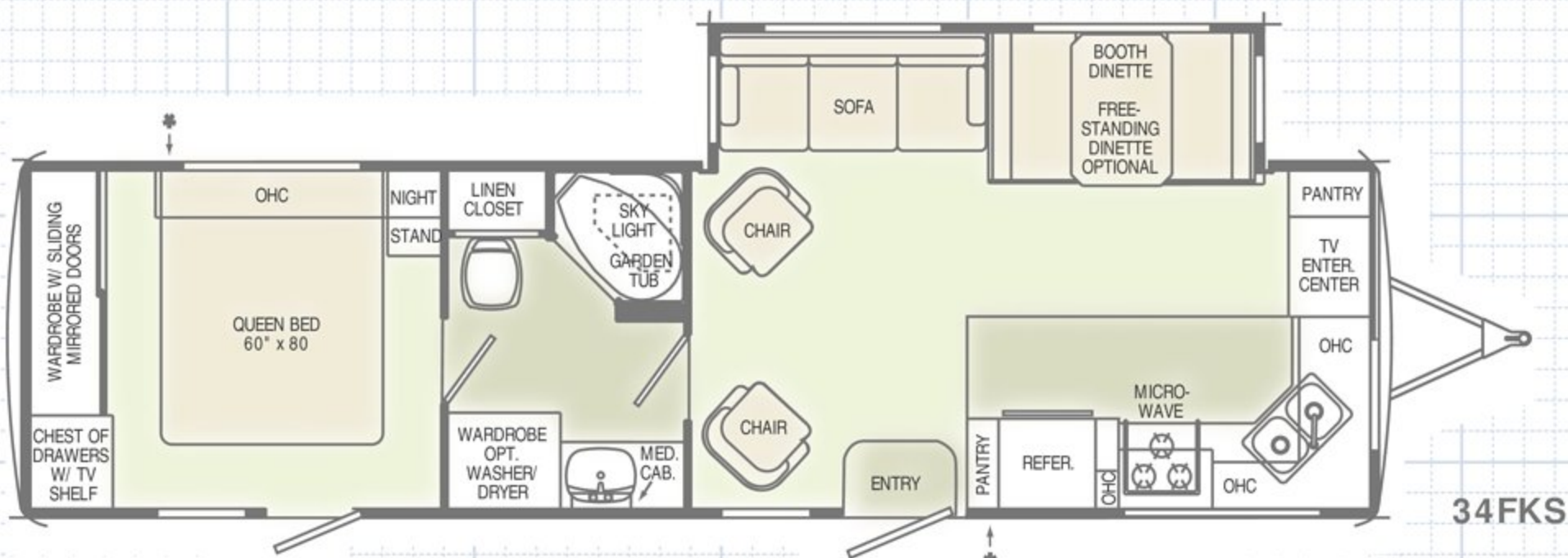


2001 Aluma-Lite® SPECIFICATIONS

WEIGHTS	28SKS	30SKS	30FKS	33FKS	34FKS
Gross Vehicle Weight Rating (Lbs.)	10,000	10,000	10,000	10,250	10,250
Hitch Weight (Lbs.)	980	870	N/A	1,340	1,230
Axle(s) Weight (Lbs.)	5,200	5,200	5,200	5,200	5,200
Unloaded Vehicle Weight (Lbs.)	7,280	7,580	N/A	8,160	8,220
Net Carrying Capacity (NCC) (Lbs.)	2,720	2,420	N/A	2,090	2,030
Tire Size	15"	15"	15"	15"	15"
Tire Load Range	D	D	D	D	D

MEASUREMENTS	28SKS	30SKS	30FKS	33FKS	34FKS
Overall Length	29' 2"	30' 10"	30' 10"	33' 10"	34' 6"
Overall Height (including A/C)	10' 8"	10' 8"	10' 8"	10' 8"	10' 8"
Exterior Width	98"	98"	98"	98"	98"

TANK CAPACITIES	All Tank Capacities are Approximate. Actual "Usable Capacities" May Vary as a Result of Variances in Installation and Fabrication of the Tanks				
Water Heater (Gal.)	6	6	6	6	6
Gray Tank (Gal.)	40	40	40/40	40/40	40/40
Black Tank (Gal.)	40	40	40	40	40
Fresh Tank (Gal.)	60	60	60	60	60
L.P. Tank (Gal.) (2)	30	30	30	30	30



Due to the large variety of options and floor plan arrangements available to our customers, actual weights for each unit can differ significantly. Holiday Rambler provides a weight sticker in each unit we produce which includes that unit's tank capacities and approximate weight. Consult your local Holiday Rambler dealer for unit availability and further information.

The information printed in this brochure reflects product design, fabrication, and component parts at the date of printing. The manufacturer reserves the right, at any time, to make changes in product design or material or component specifications as its sole option, without notice. This includes the substitution of components of a different brand or trade name which will result in comparable performance. All information printed in this brochure is subject to change after the date of printing. Some features shown or mentioned in this brochure are optional and may only be available in selected floor plans. Photographs may

show props or decorations that are not standard equipment on Holiday Rambler models.

Holiday Rambler, the HR logo and its design, are registered trademarks. All other products and company names are trademarks and/or registered trademarks of their respective holders.

While the color of the towable exteriors and the interior fabrics depicted in this sales brochure are fair and reasonable depictions, the colors depicted may not be an exact match of the actual colors because of the variances in photo-processing and variances caused by inserting the photographs within the sales brochure. Due to product improvements, changes during the model year and/or transcription errors that may occur, information represented within this brochure may not be accurate at the time of your purchase. If certain information is significant to your purchasing decision, please confirm the information with your dealer prior to submitting your order.

BODY AND FRAME CONSTRUCTION

Standard Features

- Alumaframe® Superstructure
- Heavy Duty Steel 10-inch I-beam Frame
- Vinyl Exterior Graphics
- Heavy Duty Side Metal Wrap
- Two Wrap Storage Doors
- Smooth Aluminum Exterior Walls

Front Molded Fiberglass Cap, LP Bottle Cover and Battery Cover

- Rear Molded Fiberglass Cap with Integrated Bumper
- 3/8-inch Foam Core, Thermal Barrier Laminated Sidewall Structure



- Steel Frame Sub-Floor
- 5/8-inch Structurewood Flooring
- Enclosed Heated Underbelly with Side Wraps
- 10-Layer Aluminum Roof Structure with RV 2000 Roofing Material
- Vapor Barrier in Roof
- Soft Padded Vinyl Ceiling
- Flat Floor Slide-Out Rooms



Storage Under Rear Bed (N/A: with Twin Bed Option) (N/A: 30SKS, 34FKS)

- Tandem Axles with Electric Brakes

Shock Absorbers

- Radial Tires
- Stylized 15-inch Sport Wheels with Trim Ring and Chrome Center Hub
- Spare Tire with Sport Wheel with Carrier Under Frame

Options

- Chrome Wheels (Four)
- Scissor Jacks
- Gel Coat Fiberglass Sidewalls
- Lighted Power Hitch Jack
- Rear Ladder
- Large Double-Door Refrigerator



APPLIANCES

Standard Features

- High Output Three-Burner Range/Oven
- Systems Monitor Panel on Range Hood with 12 Volt Fan

- Bi-Fold Range Cover

- TV Antenna and Booster with One-12V Recept. and TV Jack(s)

Microwave with Touch Control

Control

- Cable TV/DSS/VCR Hook-Ups with Video Control Box
- Telephone Jacks in Kitchen and Bedroom Areas



AM/FM

Electronic Tune with CD Stereo and Cassette (Four Speakers)

Options

- Large Double-Door Refrigerator with Ice Maker
- 20-inch Color TV with Remote Control in Living Area (Requires TV Swivel Base)
- 13-inch Color TV with Remote Control in Bedroom
- TV Swivel Base (N/A: 28SKS, 30SKS)



Surround Sound Speaker System

- DSS Dish with Stand
- Washer/Dryer Prep with 50 amp Service (Requires 10 Gallon DSI Gas/Elec. Water Heater) (33FKS, 34FKS)
- Vented Combination Washer/Dryer (Requires Washer/Dryer Prep) (33FKS, 34FKS)
- VCR

INTERIORS (cont.)

Standard Features

- Laminate Kitchen Countertop with Solid Surface Countertop Edging
- Color Matched Kitchen Sink Covers

- Kitchen Countertop Extension (28SKS, 30SKS)

- Clock
- Pantry with Adjustable Shelving (N/A: 28SKS, 30SKS)

- Tip-Out Tray by Sink

- Lined Wardrobe(s)
- TV Shelf in Bedroom
- Dressing Mirror
- Medicine Cabinet

- Toilet Tissue Holders
- Towel Racks on Bathroom Door

- Decor Glass in Cabinet Doors
- Slide-Out House Fascia Trim with Fabric Inserts

- Carpeting and Pad in Living Area, Hallway and Bedroom

- Linoleum in Bathroom, Kitchen and Entry

- Decor Mirrors

Options

- Plank Floor in Kitchen and Entry
- Raised Panel Insert for the Refrigerator
- Colony Oak or Walnut Cabinets
- Designer Area Rug

FURNITURE

Standard Features

- Queen Bed Head-To-Rear (N/A: 30SKS, 34FKS)
- Queen Bed Head-To-Front (30SKS only)
- Queen Bed Head-To-Off-Door Side (34FKS only)

- Wood Booth Dinette with 36-inch Storage Drawers

- Bedsread
- Headboard

- Easy-Bed Sleeper Sofa with Two Bolsters
- Swivel Barrel Chair (Two in 30SKS, 33FKS, 34FKS)

Options

- Leather Hide-A-Bed Sofa (33FKS, 34FKS)
- Hide-A-Bed Sleeper Sofa with Two Throw Pillows (33FKS, 34FKS)

INTERIORS

Standard Features

- Western Oak Cabinetry
- Square Raised Panel Cabinet Doors
- Laminate Table Top
- Low Friction Roller Drawer Guides
- Smoked Acrylic Refrigerator Door Panels
- Laminate Bathroom and Bedroom Countertops

FURNITURE (cont.)

Options

Fabric Recliner (Two in 30SKS, 33FKS, 34FKS)

Leather Mate Recliner (Two in 30SKS, 33FKS, 34FKS)

Coffee Table

Free-Standing Dinette (Drop Leaf Trestle Table) with Four Wood Chairs

Twin Beds with Wardrobe (N/A: 30SKS, 34FKS)

Twin Bed with Night Stand (30SKS)

ELECTRICAL SYSTEMS AND LIGHTS

Standard Features

Electrical Management System (30 amp 12V with 55 amp Conv.)

Porch Light

120V Exterior Receptacle

Utility Service Light

Entry Step Light



Wardrobe Lights

Hitch Light/Trunk Light

Decorative Dinette Light

Decorative Living Room Light

Cosmetic Light in Bathroom

Battery Disconnect Switch

12V Incandescent Ceiling Lights

Decorative Lights in Bedroom

Options

Exterior Security Lights with Living Area and Bedroom Switch

One 12V Deep Cycle Battery

Two 12V Deep Cycle Batteries

Solar Prep

Fluorescent Ceiling Lights

PLUMBING AND LP SYSTEMS

Standard Features

White Kitchen Sink with Single Handle Lever Faucet (Dual Deep Basin)

Demand Water System with Water Pump

PLUMBING AND LP SYSTEMS (cont.)

Standard Features

6 Gallon LP Gas Water Heater with Electronic Ignition (DSI)

Fiberglass One-Piece Tub/Shower

Accordion Shower Door

Outside Shower



Porcelain Toilet

Two 30 Lb. LP Tanks with Automatic Changeover and Cover

Options

Fold-Down Shower Seat

Water Heater By-Pass Kit

No-Fuss Flush Holding Tank Rinsing System

6 Gallon LP Gas/Electric Water Heater with Electronic Ignition (DSI)

10 Gallon LP Gas/Electric Water Heater with Electronic Ignition (DSI)

Water Filter System in Kitchen

Glass Shower Door

SAFETY

Standard Features

Fire Extinguisher

Deadbolt Lock(s) on Entrance Door(s)

120V GFI Protected Outlets (Kitchen, Bathroom and Exterior)

Breakaway Switch

Safety Chains

LP Gas Detector

Smoke Detector

Egress Window(s)

Safety Glass

WINDOWS AND DOORS

Standard Features

Tinted Radius Windows

30-inch Radius Main Entrance Door with Anti-Skid Steps

WINDOWS AND DOORS (cont.)

Standard Features

26-inch Bedroom Entrance Door with Anti-Skid Steps (N/A with Twin Beds)

Front High-Gloss Gel Coat Fiberglass Travel Awning

Options

Tinted Skylight in Bathroom

Acrylic Patio Awning with Cover

Acrylic Slide-Out Awning

Swing-Out Entry Door Handle (N/A: 30SKS)

Dual Pane Windows

HEATING, VENTS AND AIR CONDITIONING

Standard Features

30M BTU Hydroflame® Electronic Ignition Furnace (28SKS)

35M BTU Hydroflame® Electronic Ignition Furnace (N/A: 28SKS)

One DuoTherm® 13.5M BTU Air Conditioner with Ducted Air and Wall Thermostat

In-Floor Ducted Heating System

Manual Roof Vent

12V Roof Vent in Bathroom

Options

15.0M BTU A/C ILO 13.5M

12V Roof Vents

12V Attic Fan with Wall Switch



WINDOW TREATMENTS

Standard Features

Living Room: Mini Blinds, Padded Valances and Decorative Drapery Panels

Kitchen: Mini Blinds and Valance

Bedroom: Mini Blinds, Valances and Decorative Drapery Panels

Options

Pleated Day/Night Shades in Living Area and Bedroom