

2001

VACATIONER[®]

Get Out of the Box.



HOLIDAY RAMBLER

This is Living.



We've included many standard features and a number of options, enabling you to customize your Vacationer® to fit your concept of motor home enjoyment. And because it's Holiday Rambler® your options are top quality all the way. For example, the cabinet work is the finest to be found in motor homes. And fabrics are hand selected by our seasoned designers.

ABOVE — Shown top to bottom: Western Oak cabinets are standard. Regal Cherry & Walnut are optional. TOP — The interior includes an easy-bed sleeper sofa, optional free-standing dinette with two or four chairs, and Western Oak cabinets. Miniblinds and valances are in the kitchen and day/ night window shades are optional. With the kitchen-suite slide open, you get lots of extra room. (Shown:35PBD with Camelia decor.) RIGHT — Your decor choices are Camelia, Fawn and Spruce.



Camelia

Fawn

Spruce

2001 VACATIONER® STANDARDS AND OPTIONS

BODY CONSTRUCTION

Standard Features

Alumaframe® Superstructure with Five-Year Limited Warranty
Steel Cage Cockpit Construction
Tapered Aluminum Roof with Fiberglass Insulation
Smooth Aluminum Exterior Walls
Fiberglass Front Cap
Rear Molded Fiberglass Cap
Interior Paneling
Soft Touch Padded Vinyl Ceiling
Steel Framed Floor on Steel Trusses
5/8-inch Laminated Sturdi-Wood Flooring
Underbelly with Block Foam Insulation
One-Piece Polyethylene Storage Compartment Enclosures
Exterior Entry Assist Handle
Mud Flaps
Exterior Storage Compartment Doors with Integrated Single Handle Latches
Fiberglass Front and Rear Bumpers
Rear Ladder
Undercoating

COCKPIT

Standard Features

CD Player/Radio with Four Speakers
12V and 110V Outlet in Cockpit Area
Pilot and Co-Pilot Map Lights
Pilot and Co-Pilot Recliner Seats
Intermittent Windshield Wipers
Power Steering/Cruise Control
Tilt Steering Wheel
Multi-Positioned Sunvisors
Electric Automotive Horn
Floor Mats
Rear Vision System Prep
Power Heated Remote Mirrors

Options

Six-Way Power Pilot Seat
Six-Way Power Co-Pilot Seat
AM/FM Cassette (deletes CD)
Rear Vision System
Driver's Door
CB Prep
Computer Laptop Workstation

APPLIANCES

Standard Features

Large Double-Door 2-Way Refrigerator
17-inch High Output Three-Burner Range/Oven (Opt. on 33PBD)
Microwave with Touch Control (32CG, 35PBD)
Space Saver Microwave (N/A: 32CG, 35PBD)
Range Hood with 12V Fan (32CG)
Systems Monitor Panel
Cable TV Hook-Up and Telephone Jacks
TV Antenna and Booster with 12V Receptacle and TV Jack(s)

APPLIANCES (cont.)

Standard Features

20-inch Color TV with Remote Control (Living Area)
13-inch Color TV with Remote Control (Bedroom)
Options
Convection Microwave (32CG, 35SBD)
Space Saver Convection Microwave (N/A: 32CG, 35SBD)
Raised Panel Refrigerator Insert
Large Double-Door 2-Way Refrigerator with Ice Maker
Four-Door Refrigerator with Ice Maker (35SBD, 35PBD)
High Output Three-Burner Cooktop (without Oven) (Std. 33PBD)
DSS Prep
VCR with Video Switching Box
Washer/Dryer Prep (Includes 10 Gallon Gas/Electric Water Heater) (Requires 50 amp Service Opt.) (33PBD, 35WGS, 36WGS)
Combination Washer/Dryer (Requires Washer/Dryer Prep and 50 amp Service)(33PBD, 35WGS, 36WGS)

INTERIOR

Standard Features

Western Oak Cabinets
Raised Panel Cabinet Doors with Face Mount Hinges
Telestrut Overhead Storage Doors and Positive Catches on all Other Doors
Low Friction Roller Drawer Guides
Laminate Kitchen and Bathroom Countertop with Accent Edge
Front Overhead Cabinet Doors with Screens
Wood Drink Tray on Co-Pilot Side (Between Co-Pilot Seat and Barrel Chair)
Full Length Dressing Mirror (where available)
Medicine Cabinet
Towel Bar in Bathroom
Queen Bed Head-To-Rear with Shirt Closets and Nightstands (N/A: 33PBD, 35SBD, 35PBD, 36SGS)
Queen Bed Head-To-Side with Nightstands (33PBD, 35SBD, 35PBD, 36SGS)
Bedspread
Easy-Bed Sleeper Sofa
Swivel Barrel Chair
Booth Dinette with Drawers
Nylon Carpeting and Pad in Living Area, Hallway and Bedroom
Wilsonart® Laminate Flooring in Kitchen
Wilsonart® Linoleum Flooring in Bathroom
Wood Choice: Regal Cherry or Walnut Cabinets

INTERIOR (cont.)

Options

Free-Standing Dinette Table with Two Free-Standing Chairs
Two Folding Dinette Chairs
Twin Beds (32CG, 35WGS, 36WGS)
Swivel Recliner Chair ILO Barrel Chair

ELECTRICAL SYSTEMS AND LIGHTS

Standard Features

55 amp Electronic 12V Power Converter
30 amp 120V Distribution Panel and Cord (Automatic Energy Select Switch only if 2nd Air Conditioner is Option)
Onan® 5.0 KW Generator (32CG, 33PS, 33PBD)
Onan® 5.5 KW Generator (35' and 36' Models)
Two 6V Deep-Cycle Batteries
Battery Disconnect Switches
Porch Light
Patio Receptacle
Entry Step Light
Lights in Outside Storage Compartments
Decorative Dinette Lights
12V Incandescent Lights in Ceiling
Cosmetic Light in Bathroom
Decorative Wall Lights in Bedroom
Options
Energy Management System with 50 amp Service
50 amp 120V Distribution Panel and Cord (Requires 5.5 KW Generator)
Onan 5.5 KW Generator (Option in 32CG, 33PS, 33PBD)

HEATING, VENTS AND AIR CONDITIONING

Standard Features

Two Air Conditioners with Ducted Air and Wall Thermostat - One 13.5M BTU and One 11.0M BTU (N/A: 32CG, 33PS, 33PBD)
One 13.5M BTU Air Conditioner with Ducted Air and Wall Thermostat (32CG, 33PS, 33PBD)
31M BTU Electronic Ignition Furnace (32CG, 33PS)
35M BTU Electronic Ignition Furnace (N/A: 32CG, 33PS)
Wet Bay with 12V Heater
In-Floor Ducted Heating System
Dash Heating and Air Conditioner System with Defroster Controls
12V Roof Vent in Bath
Options
Two Air Conditioners with Ducted Air and Wall Thermostat - One 13.5M and One 11.0M BTU (32CG, 33PS, 33PBD)
Cold Weather Package
12V Attic Fan
Heat Pump (per Air Conditioner)

HEATING, VENTS AND AIR CONDITIONING (cont.)

Options

Two 13.5M BTU Air Conditioners with Ducted Air and Wall Thermostat (N/A: 32CG, 33PS, 33PBD)

PLUMBING AND LP SYSTEMS

Standard Features

High/Low Stainless Steel Kitchen Sink with Single Lever Faucet
Water System with Water Pump
6 Gallon LP Gas/Electric Water Heater with Electronic Ignition (DSI)
Water Heater By-Pass Valve
Gravity or Pressurized Water Fill
One-Piece Fiberglass Shower
Glass Shower Door with Brass Frame
Toilet with Sprayer
Heated Systems Compartment with Easy Access to Hook-Ups
No-Fuss Flush Holding Tank Rinsing System
Options
Water Purifier in Kitchen
Neo Angled Bath Tub (N/A: 32CG, 33PBD, 35SBD)
10 Gallon Gas/Electric Water Heater (DSI) (N/A: 33PS, 36SGS)

WINDOWS, DOORS AND AWNINGS

Standard Features

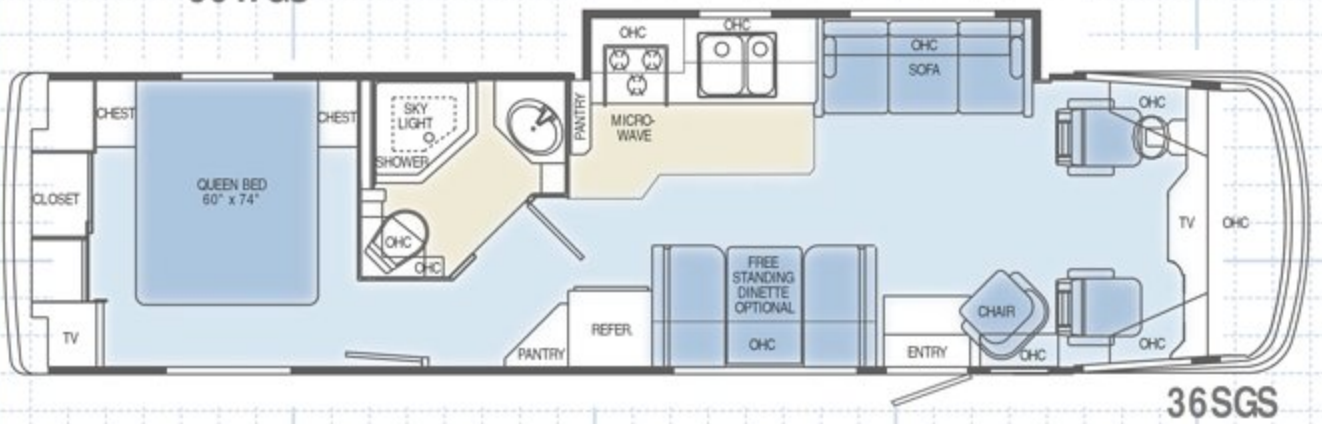
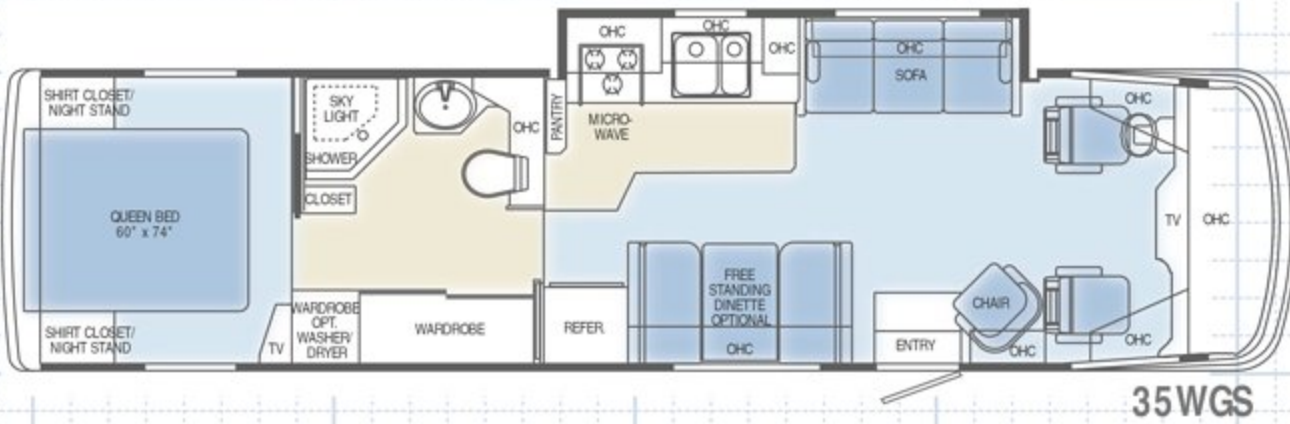
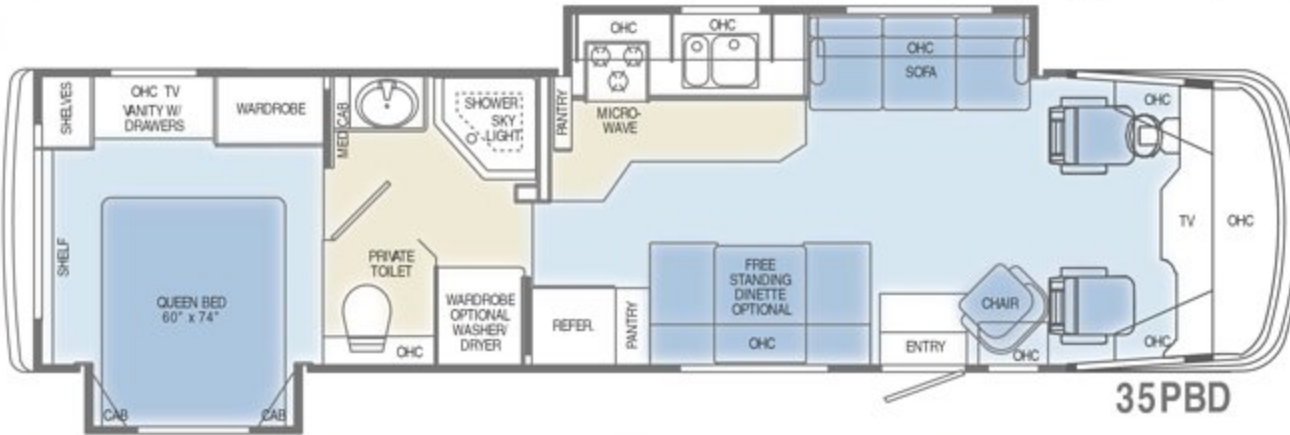
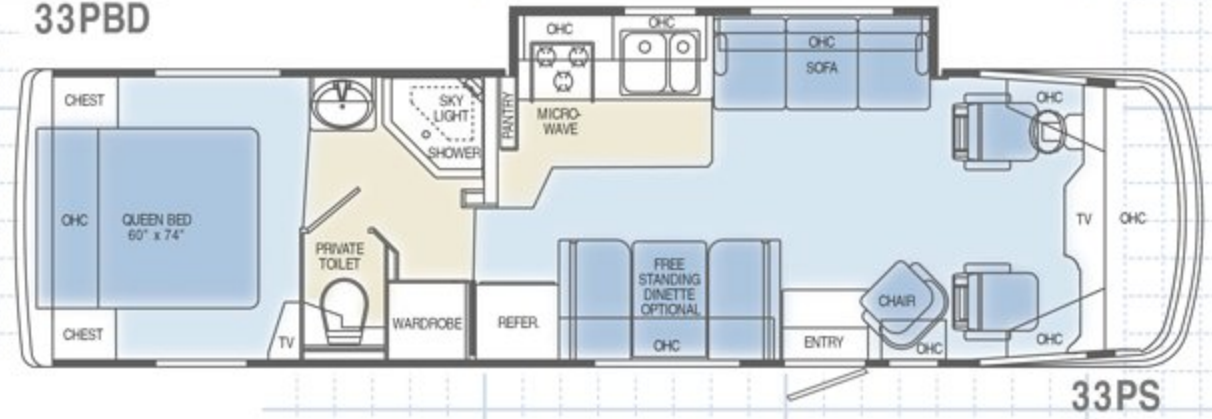
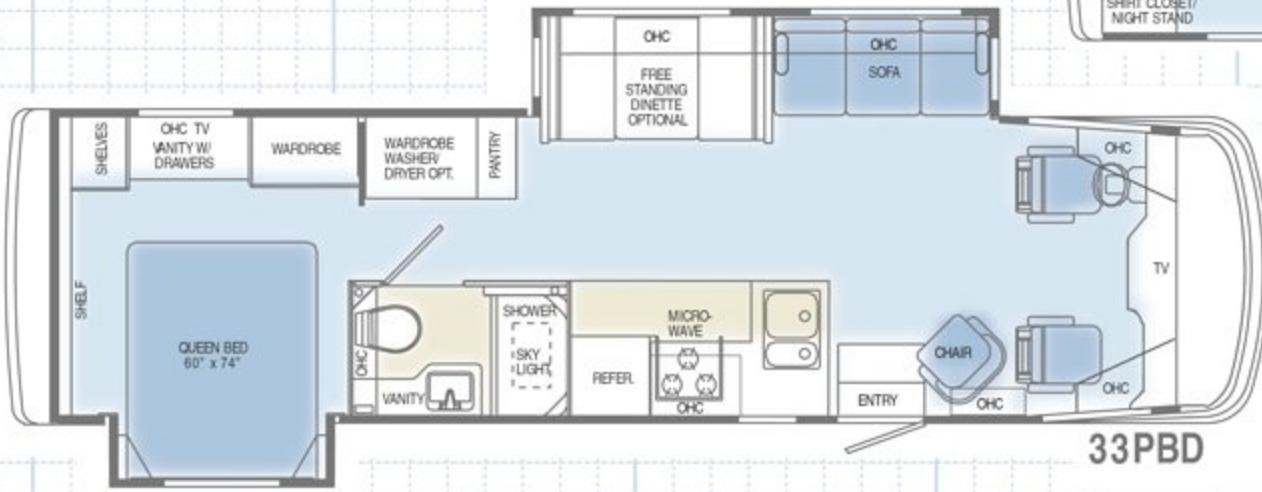
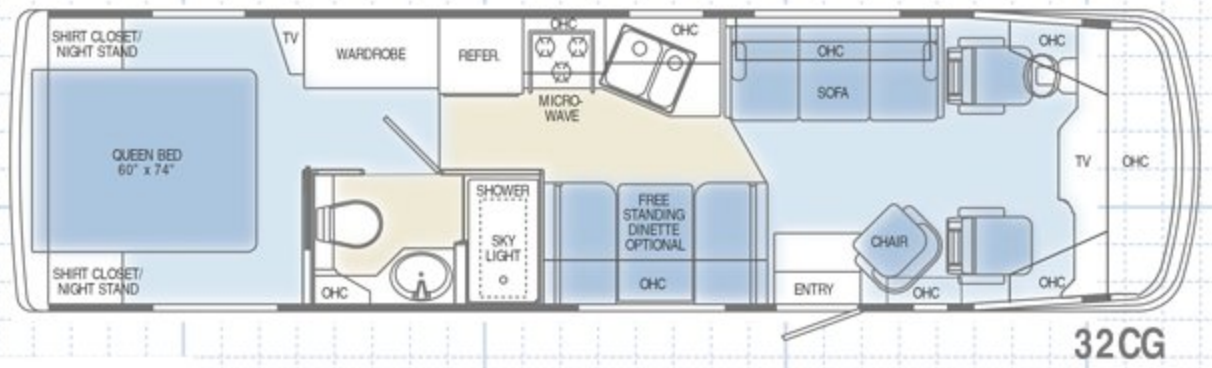
Mini Blinds and Valance in Kitchen
Radius Safety Glass Dark Tinted Windows
Slider Dual Pane Windows
Radius Entrance Door with Clear Glass, Roller Shade, Screen Door and Anti-Skid Steps
Tinted Skylight in Bathroom
Options
Rear Window (N/A: 33PBD, 35SBD, 35PBD, 36SGS)
Day/Night Pleated Shades in Living Room and Bedroom
Window Awning(s) (Only One Window Awning on Double Slide-Out)
Acrylic Patio Awning with Metal Cover
Automatic Patio Awning

SAFETY

Standard Features

Fire Extinguisher
Deadbolt Lock on Entrance Door
120V GFI Protected Circuit (Kitchen, Bathroom, Exterior)
LP Gas Detector
Smoke Detector
Carbon Monoxide Detector
Driver and Passenger Three-Point Seat Belts (Lap and Shoulder)
Third Brake Safety Light
Egress Window(s)

FLOOR PLANS



Wilsonart Laminate / Linoleum
 Carpet

2001 VACATIONER® SPECIFICATIONS

FORD CHASSIS/ENGINE/SUSPENSION

Electronic Fuel Injection Gasoline Engine: 6.8L V10

Cubic Inch Displacement: 415

Automatic Transmission with Overdrive: 4-Speed

Fuel Tank Capacity: 75 Gal.

Alternator: 130 amps

Rear Axle Ratio: 5.38:1

Front Leaf Spring Suspension

Rear Leaf Spring Suspension

Stainless Steel Wheel Liners

Spare Tire and Wheel (Radial)

Radial Tires

Wheel and Tire Size: 245/70R X19.5F

5000 Lb. Hitch Receiver with 6-Point Connector

Options

Manual Hydraulic Leveling Jacks (4 PT.)



Camelia (VIN01 Camelia interior)



Spruce (V8N01 Spruce interior)



Fawn (V2N01 Fawn interior)

| WEIGHTS | 32CG | 33PBD | 33PS | 35PBD | 35SBD | 35WGS | 36SGS | 36WGS |
|---------------------------------------|--------|--------|--------|--------|--------|--------|--------|--------|
| Gross Vehicle Weight Rating (Lbs.) | 20,500 | 20,500 | 20,500 | 20,500 | 20,500 | 20,500 | 20,500 | 20,500 |
| Gross Combined Weight Rating (Lbs.) | 25,500 | 25,500 | 25,500 | 25,500 | 25,500 | 25,500 | 25,500 | 25,500 |
| Front Gross Axle Weight Rating (Lbs.) | 7,000 | 7,000 | 7,000 | 7,000 | 7,000 | 7,000 | 7,000 | 7,000 |
| Rear Gross Axle Weight Rating (Lbs.) | 13,500 | 13,500 | 13,500 | 13,500 | 13,500 | 13,500 | 13,500 | 13,500 |

MEASUREMENTS

| | | | | | | | | |
|--------------------------------|--------|--------|--------|--------|--------|--------|--------|--------|
| Wheelbase | 208" | 208" | 208" | 228" | 228" | 228" | 228" | 228" |
| Overall Length | 32' 8" | N/A | 33' 2" | 35' 3" | 35' 3" | 35' 3" | 36' | 36' |
| Overall Height (Including A/C) | 11' 9" | 11' 9" | 11' 9" | 11' 9" | 11' 9" | 11' 9" | 11' 9" | 11' 9" |
| Interior Height | 6' 6" | 6' 6" | 6' 6" | 6' 6" | 6' 6" | 6' 6" | 6' 6" | 6' 6" |
| Interior Width | 94.5" | 94.5" | 94.5" | 94.5" | 94.5" | 94.5" | 94.5" | 94.5" |
| Exterior Width | 100.5" | 100.5" | 100.5" | 100.5" | 100.5" | 100.5" | 100.5" | 100.5" |

TANK CAPACITIES

All Tank Capacities are Approximate. Actual "Usable Capacity" May Vary as a Result of Variances in Installation and Fabrication of the Tanks.

| | | | | | | | | |
|---------------------|------|------|------|------|------|------|------|------|
| Water Heater (Gal.) | 6 | 6 | 6 | 6 | 6 | 6 | 6 | 6 |
| Gray Tank (Gal.) | 45 | 45 | 45 | 43 | 43 | 43 | 45 | 45 |
| Black Tank (Gal.) | 45 | 45 | 45 | 45 | 45 | 45 | 45 | 45 |
| Fresh Tank (Gal.) | 67 | 67 | 67 | 67 | 67 | 67 | 70 | 70 |
| LP Tank (Gal.)* | 32.9 | 32.9 | 32.9 | 32.9 | 32.9 | 32.9 | 32.9 | 32.9 |

*Actual Filled LP Capacity is 80 % of Listing Due to Safety Shut Off Required on Tank.

Due to the large variety of options and floor plan arrangements available to our customers, actual weights for each unit can differ significantly. Holiday Rambler provides a weight sticker on each unit we produce which includes that unit's tank capacities and approximate weight. Consult your local Holiday Rambler dealer for unit availability and further information.

The information printed in this brochure reflects product design, fabrication, and component parts at the date of printing. The manufacturer reserves the right, at any time, to make changes in product design or material or component specifications as its sole option, without notice. This includes the substitution of components of a different brand or trade name which will result in comparable performance. All information printed in this brochure is subject to change after the date of printing. Some features shown or mentioned in this brochure are optional and may only be available in

selected floor plans. Photographs may show props or decorations that are not standard equipment on Holiday Rambler models. Holiday Rambler, the HR logo and its design, are registered trademarks. All other products and company names are trademarks and/or registered trademarks of their respective holders.

While the color of the motor home's exterior and the interior fabrics depicted in this sales brochure are fair and reasonable depictions, the colors depicted may not be an exact match of the actual colors because of the variances in photo-processing and variances caused by inserting the photographs within the sales brochure. Due to product improvements, changes during the model year and/or transcription errors that may occur, information represented within this brochure may not be accurate at the time of your purchase. If certain information is significant to your purchasing decision, please confirm the information with your dealer prior to submitting your order.