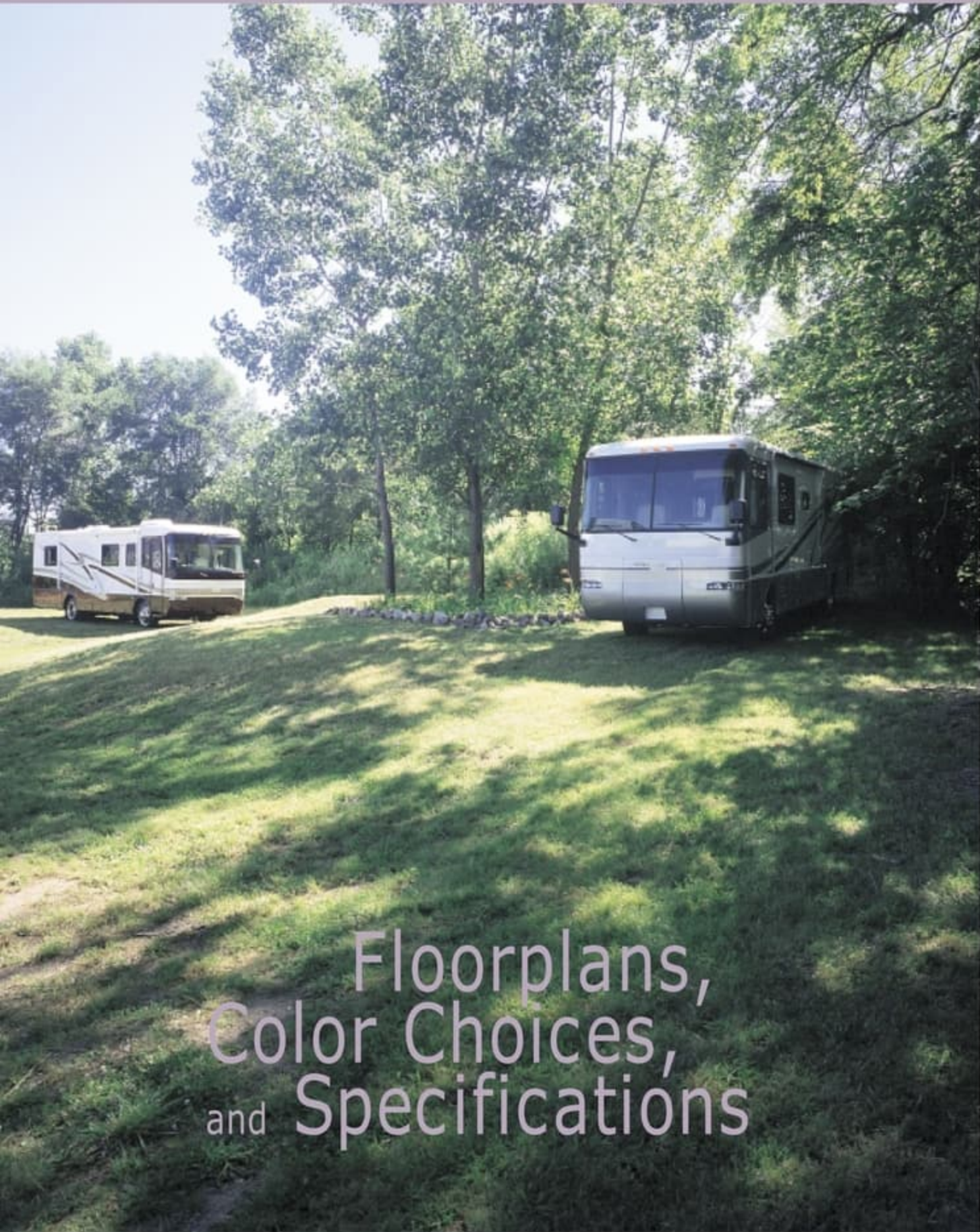
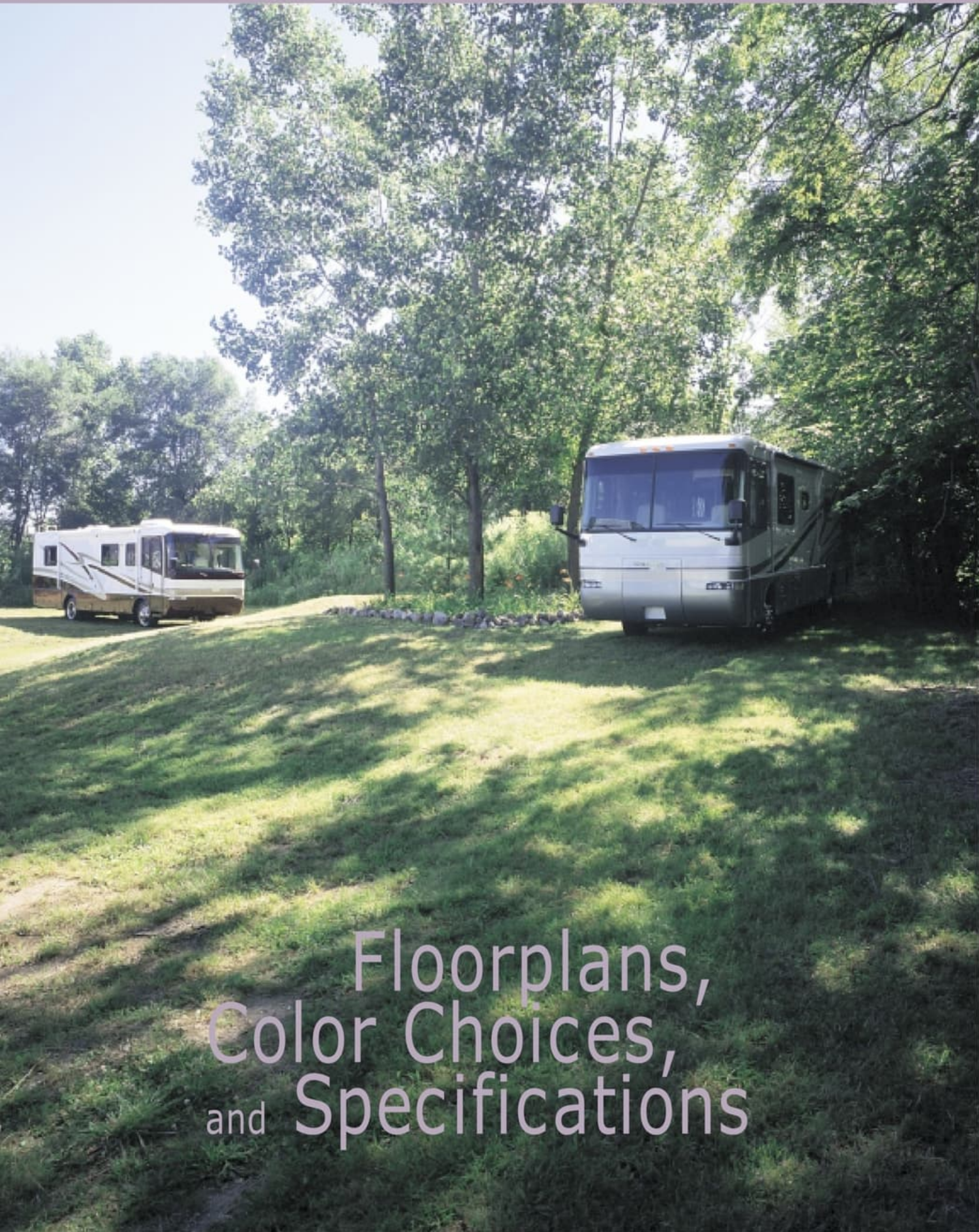




KNIGHT 2001



Floorplans,
Color Choices,
and Specifications



Floorplans,
Color Choices,
and Specifications

Specifications

for the 2001 Knight

Body Construction

- Superstructure w/Five Year Warranty
- Alumaframed w/Hung Fiberglass Gelcoat Walls
- Aluminum Roof
- Ozite Ceiling
- Steel Framed Floor on Steel Trusses
- 1 1/2" Steel Tube w/Laminated 5/8" Structurewood Flooring
- Foam Insulated Underbelly w/Luan Backer
- Exterior Graphics
- One-Piece Polyethylene Storage Compartments w/Pass Through Storage
- Exterior Storage Compartment Doors w/Integrated Single-Handle Latches
- Rear Ladder
- Exterior Assist Handle
- Fiberglass Front & Rear Cap w/Integrated Bumper
- Headlamp w/Turn Signal
- Underhood Utility Light
- Mud Flaps
- Engine Access Doors
- Undercoating
- Stainless Steel Wheel Simulators
- 4000lb Hitch Receiver & 6 Point Connector (on 22,000 GVW units)
- 5000lb Hitch Receiver & 6 Point Connector (on 26,000 GVW units)

Options

- 3-Point Hydraulic Jacks
- Air Over Hydraulic Brakes

Cockpit Features

- CD Player/Radio w/Four Speakers
- Burlwood Dash Panel
- Pilot & Co-Pilot Recliner Seats
- Windshield Wipers w/Intermittent Wiper Control
- Drink Holder
- Fiberglass Automotive Dash Pod
- Multi Position Sunvisors
- Power Steering
- Cruise Control
- Tilt Steering Wheel
- Electric Automotive Horn
- Floor Mats
- Prewire for 6-Way Power Pilot & Co-Pilot Seats
- Power Heated Remote Mirrors
- Rear Vision System w/Sound

Options

- Six-Way Power Pilot Seat
- Six-Way Power Co-Pilot Seat

Appliances and Accessories

- 8cu.ft. 2-Way Refrigerator
- High Output 3-Burner Range/17" Oven
- Space Saver Microwave
- Systems Monitor Panel
- Cable TV Hook-up & Telephone Jacks
- VCR Prep
- Prewire for Bedroom 13" TV
- TV Antenna & Booster w/12V Recept & TV Jacks
- Washer/Dryer Prep
- 20" Stereo Color TV w/Remote Control in Living Area

Options

- Convection Microwave
- 8cu.ft. 2-Way Refrigerator w/Icemaker
- Digital Satellite Dish Prep
- High Output 3-Burner Cooktop w/Recessed Range (no oven)
- 4-Door Refrigerator w/Icemaker
- 13" Color TV w/Remote Control in Bedroom
- Combination Washer/Dryer
- VCR w/Video Switching Box

Interiors

- Hardwood Cabinet Ends
- Western Oak Cabinets
- Adjustable Shelves in Kitchen Pantry
- Wallpaper Border in Bedroom & Bathroom
- Raised Panel Hardwood Doors
- Overhead Storage Doors w/Struts & Positive Catches
- Low Friction Roller Drawer Guides
- Marble-like Kitchen Countertops & Sink
- Laminate Bathroom Countertops
- Medicine Cabinet
- Bedsread w/Pillows
- Towel Bars in Bathroom
- Easy Bed Sleeper Sofa w/Arms
- Headboard w/Mirror
- Overhead Cabinets in Slide-Out Above Sofa
- Booth Dinette w/Storage Door & Drawer
- Nylon Carpeting & Pad in Living Area & Bedroom
- Mirror at Galley Backsplash
- Brass Finished Cabinet Hardware
- Mini Blinds
- Window Lambrequins
- Sink Covers

Specifications

for the 2001 Knight

Body Construction

- Superstructure w/Five Year Warranty
- Alumaframed w/Hung Fiberglass Gelcoat Walls
- Aluminum Roof
- Ozite Ceiling
- Steel Framed Floor on Steel Trusses
- 1 1/2" Steel Tube w/Laminated 5/8" Structurewood Flooring
- Foam Insulated Underbelly w/Luan Backer
- Exterior Graphics
- One-Piece Polyethylene Storage Compartments w/Pass Through Storage
- Exterior Storage Compartment Doors w/Integrated Single-Handle Latches
- Rear Ladder
- Exterior Assist Handle
- Fiberglass Front & Rear Cap w/Integrated Bumper
- Headlamp w/Turn Signal
- Underhood Utility Light
- Mud Flaps
- Engine Access Doors
- Undercoating
- Stainless Steel Wheel Simulators
- 4000lb Hitch Receiver & 6 Point Connector (on 22,000 GVW units)
- 5000lb Hitch Receiver & 6 Point Connector (on 26,000 GVW units)

Options

- 3-Point Hydraulic Jacks
- Air Over Hydraulic Brakes

Cockpit Features

- CD Player/Radio w/Four Speakers
- Burlwood Dash Panel
- Pilot & Co-Pilot Recliner Seats
- Windshield Wipers w/Intermittent Wiper Control
- Drink Holder
- Fiberglass Automotive Dash Pod
- Multi Position Sunvisors
- Power Steering
- Cruise Control
- Tilt Steering Wheel
- Electric Automotive Horn
- Floor Mats
- Prewire for 6-Way Power Pilot & Co-Pilot Seats
- Power Heated Remote Mirrors
- Rear Vision System w/Sound

Options

- Six-Way Power Pilot Seat
- Six-Way Power Co-Pilot Seat

Appliances and Accessories

- 8cu.ft. 2-Way Refrigerator
- High Output 3-Burner Range/17" Oven
- Space Saver Microwave
- Systems Monitor Panel
- Cable TV Hook-up & Telephone Jacks
- VCR Prep
- Prewire for Bedroom 13" TV
- TV Antenna & Booster w/12V Recept & TV Jacks
- Washer/Dryer Prep
- 20" Stereo Color TV w/Remote Control in Living Area

Options

- Convection Microwave
- 8cu.ft. 2-Way Refrigerator w/Icemaker
- Digital Satellite Dish Prep
- High Output 3-Burner Cooktop w/Recessed Range (no oven)
- 4-Door Refrigerator w/Icemaker
- 13" Color TV w/Remote Control in Bedroom
- Combination Washer/Dryer
- VCR w/Video Switching Box

Interiors

- Hardwood Cabinet Ends
- Western Oak Cabinets
- Adjustable Shelves in Kitchen Pantry
- Wallpaper Border in Bedroom & Bathroom
- Raised Panel Hardwood Doors
- Overhead Storage Doors w/Struts & Positive Catches
- Low Friction Roller Drawer Guides
- Marble-like Kitchen Countertops & Sink
- Laminate Bathroom Countertops
- Medicine Cabinet
- Bedsread w/Pillows
- Towel Bars in Bathroom
- Easy Bed Sleeper Sofa w/Arms
- Headboard w/Mirror
- Overhead Cabinets in Slide-Out Above Sofa
- Booth Dinette w/Storage Door & Drawer
- Nylon Carpeting & Pad in Living Area & Bedroom
- Mirror at Galley Backsplash
- Brass Finished Cabinet Hardware
- Mini Blinds
- Window Lambrequins
- Sink Covers

Fabric Barrel Chair

Wilsonart Laminate Tile Floor in Bathroom & Kitchen

Options

Decors: Tapestry, Wheat, Seafoam

Wood Choice: Regal Cherry or Walnut

Free Standing Dinette w/Two Chairs & Two Folding Chairs

Fabric Recliner

Raised Panel Insert on Refrigerator Door

Curbside Leather Faced Love Seat (36 Z Only)

Leather Faced Recliner

Fabric Wonder Bed

Leather Faced Wonder Bed

Electrical System and Lights

55 Amp Electronic 12V Power Converter

50 Amp 120V Distribution Panel & Cord

2 - 6V Deep Cycle Batteries

110 Volt Outlet Below Table in Wall

Battery Disconnect Switches Inside Near Entry Door

Porch Light

Patio Receptacle

Lights in Outside Storage Compartments

12V incandescent Lights in Ceiling

Cosmetic Light in Bathroom

Power Entry Step w/Light

6.5 LP Genset

Two 18" Fluorescent Ceiling Lights

Water Pump Switch in Service Area

Options

Energy Management System

1500 Watt Inverter w/Two Additional Batteries

7.5 KW Diesel Generator

Heating, Vents and Air Conditioning

One 13.5M BTU Air Conditioner w/Centered Ducted System & Analog Wall Thermostat (N/A 36Z & 36R)

35M BTU Electronic Ignition Furnace

In Floor Ducted Heating System

Wet Bay w/12V Heater

Dash Heating & A/C System w/Defroster

12V Roof Vent in Bath & Kitchen

Options

Two Air Conditioners w/Ducted Air & Wall

Thermostat 13.5M BTU & 11.0M BTU (Standard on 36Z & 36R)

Cold Weather Package

12V Attic Fan in Kitchen

Plumbing and LP Systems

Demand Water System & Water Pump

Water Heater By-Pass Valve

Gravity Water Fill

Glass Shower Door w/Brass Frame

One Piece Fiberglass Tub/Shower

Toilet w/Sprayer

Insulated Utility Bay

10 Gallon Gas/Electric Water Heater

Options

Neo Angled Bath Tub (N/A 34Y)

Windows, Doors and Awnings

Tinted Dual Pane Sliding Windows

Entrance Door w/Screen

Slide-Out Room Awning

Patio Awning

Tinted Skylight in Bathroom

Options

Day/Night Pleated Shades in Living Room & Bedroom

Automatic Patio Awning

Front Door Awning

Safety Features

Fire Extinguisher 10BC

Deadbolt Lock on Entrance

120V GFI Protected Circuit

LP Gas Detector

Smoke Detector

Carbon Monoxide Detector

Driver & Passenger Three-Point Seat Belts

Third Brake Safety Light

Egress Window

Due to product improvements, changes during the model year and/or transcription errors that may occur, information represented within this brochure may not be accurate at the time of your purchase. If certain information is significant to your purchasing decision, please confirm the information with your dealer prior to submitting your order. 9.31.00.

Fabric Barrel Chair

Wilsonart Laminate Tile Floor in Bathroom & Kitchen

Options

Decors: Tapestry, W heat, Seafoam

Wood Choice: Regal Cherry or Walnut

Free Standing Dinette w/Two Chairs & Two Folding Chairs

Fabric Recliner

Raised Panel Insert on Refrigerator Door

Curbside Leather Faced Love Seat (36 Z Only)

Leather Faced Recliner

Fabric Wonder Bed

Leather Faced Wonder Bed

Electrical System and Lights

55 Amp Electronic 12V Power Converter

50 Amp 120V Distribution Panel & Cord

2 - 6V Deep Cycle Batteries

110 Volt Outlet Below Table in Wall

Battery Disconnect Switches Inside Near Entry Door

Porch Light

Patio Receptacle

Lights in Outside Storage Compartments

12V incandescent Lights in Ceiling

Cosmetic Light in Bathroom

Power Entry Step w/Light

6.5 LP Genset

Two 18" Fluorescent Ceiling Lights

Water Pump Switch in Service Area

Options

Energy Management System

1500 Watt Inverter w/Two Additional Batteries

7.5 KW Diesel Generator

Heating, Vents and Air Conditioning

One 13.5M BTU Air Conditioner w/Centered Ducted System & Analog Wall Thermostat (N/A 36Z & 36R)

35M BTU Electronic Ignition Furnace

In Floor Ducted Heating System

Wet Bay w/12V Heater

Dash Heating & A/C System w/Defroster

12V Roof Vent in Bath & Kitchen

Options

Two Air Conditioners w/Ducted Air & Wall

Thermostat 13.5M BTU & 11.0M BTU (Standard on 36Z & 36R)

Cold Weather Package

12V Attic Fan in Kitchen

Plumbing and LP Systems

Demand Water System & Water Pump

Water Heater By-Pass Valve

Gravity Water Fill

Glass Shower Door w/Brass Frame

One Piece Fiberglass Tub/Shower

Toilet w/Sprayer

Insulated Utility Bay

10 Gallon Gas/Electric Water Heater

Options

Neo Angled Bath Tub (N/A 34Y)

Windows, Doors and Awnings

Tinted Dual Pane Sliding Windows

Entrance Door w/Screen

Slide-Out Room Awning

Patio Awning

Tinted Skylight in Bathroom

Options

Day/Night Pleated Shades in Living Room & Bedroom

Automatic Patio Awning

Front Door Awning

Safety Features

Fire Extinguisher 10BC

Deadbolt Lock on Entrance

120V GFI Protected Circuit

LP Gas Detector

Smoke Detector

Carbon Monoxide Detector

Driver & Passenger Three-Point Seat Belts

Third Brake Safety Light

Egress Window

Due to product improvements, changes during the model year and/or transcription errors that may occur, information represented within this brochure may not be accurate at the time of your purchase. If certain information is significant to your purchasing decision, please confirm the information with your dealer prior to submitting your order. 9.31.00.

Color Choices

for the 2001 Knight

The following designations represent the fabric or carpet usage for all seven (3) interior decors:

A - Sofa, B - Dining or Chair , C -Bedsread, D - Vinyl/Leather Dash/Furniture, E - Carpet

A B C D E

Tapestry



Seafoam



Wheat



While the color of the motorhomes exterior and the interior fabrics depicted in this sales brochure are fair and reasonable depictions, the colors depicted may not be an exact match of the actual colors because of the variances in photo-processing and variances caused by inserting the photographs within the sales brochure. Due to product improvements and/or changes during the course of the model year, photography represented herein may not reflect exact offerings in your unit. Please confirm item availability with your dealer at the time of the order. 9.31.00.

Color Choices

for the 2001 Knight

The following designations represent the fabric or carpet usage for all seven (3) interior decors:

A - Sofa, B - Dining or Chair , C -Bedsread, D - Vinyl/Leather Dash/Furniture, E - Carpet

A B C D E

Tapestry



Seafoam



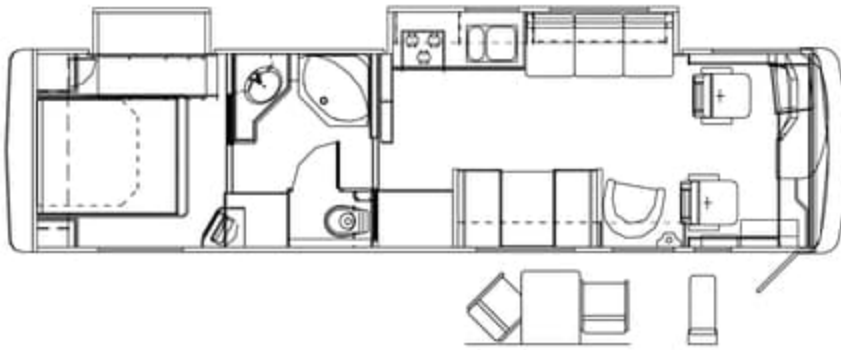
Wheat



While the color of the motorhomes exterior and the interior fabrics depicted in this sales brochure are fair and reasonable depictions, the colors depicted may not be an exact match of the actual colors because of the variances in photo-processing and variances caused by inserting the photographs within the sales brochure. Due to product improvements and/or changes during the course of the model year, photography represented herein may not reflect exact offerings in your unit. Please confirm item availability with your dealer at the time of the order. 9.31.00.

Floorplans and options for the 2001 Knight

34 H



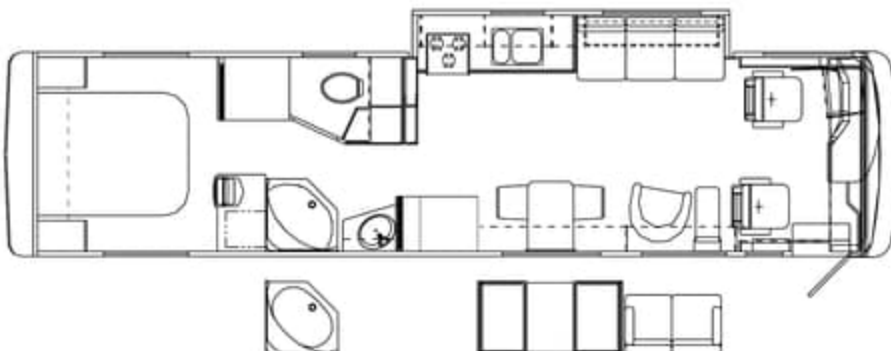
34 Y



36 R

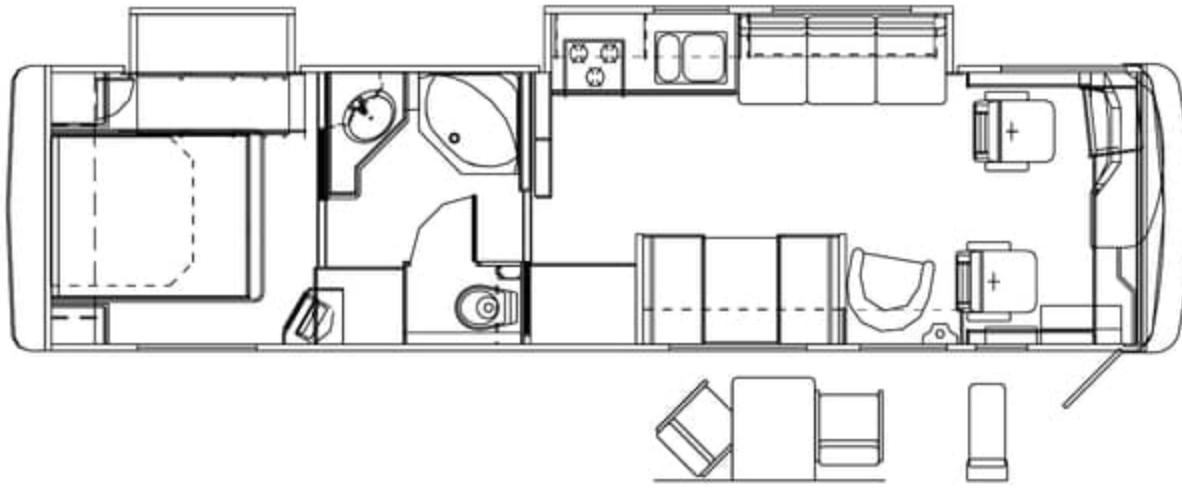


36 Z

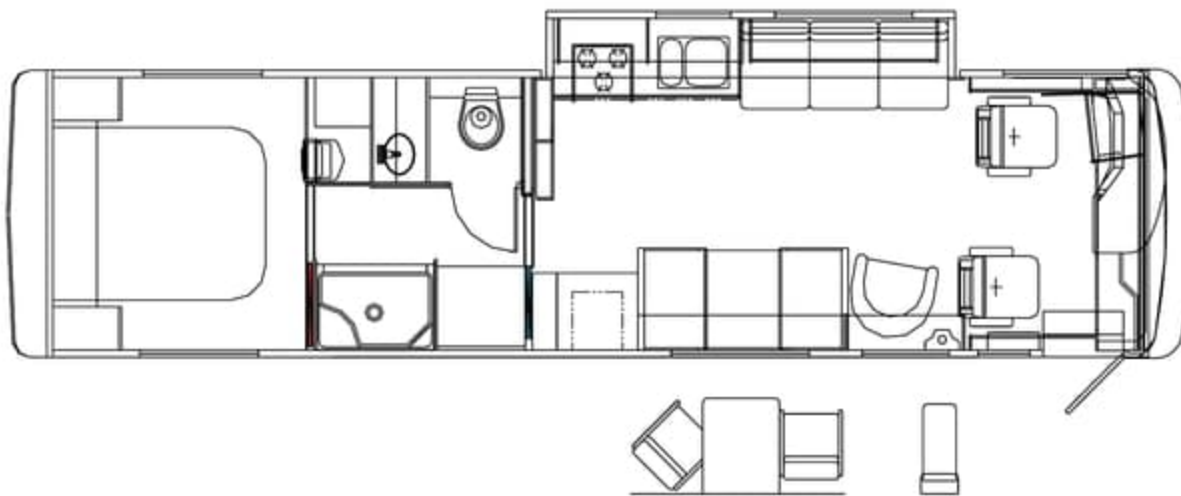


Floorplans and options for the 2001 Knight

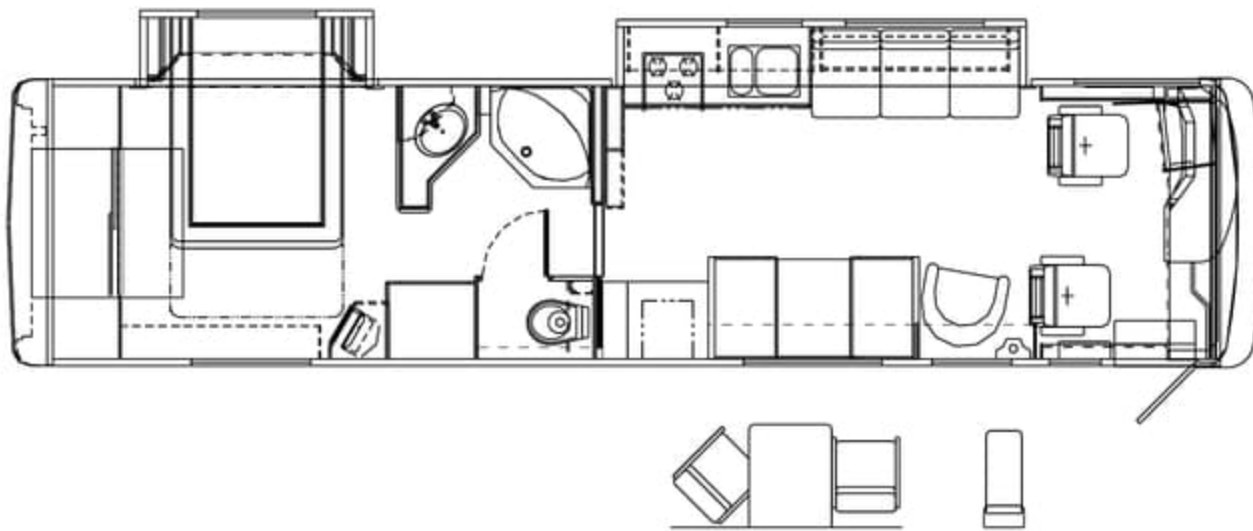
34 H



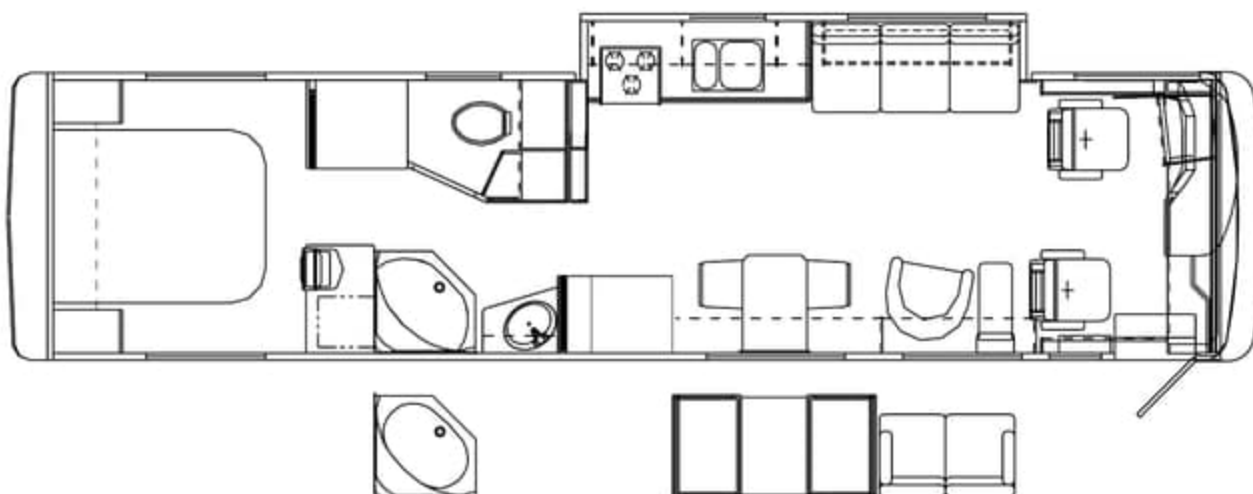
34 Y



36 R



36 Z



Chassis and Weight Charts

for the 2001 Knight

Chassis/Engine/Suspension

Chassis	Roadmaster RM 4C
Engine	Cummins 260hp ISB w/electronic fuel injection.
Cubic Inch Displacement	359
Torque	550 lbs.ft. Max @ 1900 rpm
Transmission	Allison T-1000 4-Speed
Alternator	160 Amp
Rear Axle Ratio	4.88:1
Suspension	Neway Air Suspension w/4 Outboard Mounted Airbags & 4 Shock Absorbers
Radial Tires	255/70R/22.5H
Diesel Fuel	75 Gallons
Optional Engines*	Cummins 300hp ISB w/Allison 3000M H Transmission, 26,000 GVW & Charged Air Cummins 300hp ISB w/Allison 3000M H Transmission & Charged Air Cummins 315hp ISC w/Allison 3000M H Transmission & Charged Air

*Optional Engines are available only on select floorplans and may have different capacities than those listed above for the standard 260hp engine. Please check with your dealer for availability and specification information.

Weights*	34 Y	34 H	36 Z	36 R
Gross Vehicle Weight Rating(lbs)	22,000	26,000	26,000	26,000
Gross Combined Weight Rating(lbs)	26,000	31,000	31,000	31,000
Front Gross Axle Weight Rating(lbs)	8,500	10,500	10,500	10,500
Rear Gross Axle Weight Rating(lbs)	13,500	15,500	15,500	15,500

Measurements

Wheelbase	204"	204"	228"	228"
Overall Length	34'4"	34'4"	36'4"	36'4"
Height (with A/C)	11'9"	11'9"	11'9"	11'9"
Interior Height	6'6"	6'6"	6'6"	6'6"
Interior Width	94.5"	94.5"	94.5"	94.5"
Exterior Width	100.5"	100.5"	100.5"	100.5"

Tank Capacities All Tank Capacities are Approximate. Actual "Useable Capacity" May Vary as a Result of Variances in Installation and Fabrication of the Tires.

Water Heater (Gal.)	10	10	10	10
Grey Water (Gal.)	52	52	52	52
Black Water (Gal.)	52	52	52	52
Fresh Water (Gal.)	80	80	80	80
LP Tank (Gal.)**	38	38	38	38

**Actual filled LP capacity is 80% of listing due to safety shut off required on tank.

The information printed in this brochure reflects product design, fabrication, and component parts at the date of printing. The manufacturer reserves the right, at any time, to make changes in product design or material or component specifications as its sole option, without notice. This includes the substitution of components of a different brand or trade name which will result in comparable performance. All information printed in this brochure is subject to change after the date of printing. Some features shown or mentioned in this brochure are optional and may only be available in selected floorplans. Photographs may show props or decorations that are not standard equipment on Monaco models. Monaco, the Monaco logo and its design, are registered trademarks. All other products and company names are trademarks and/or registered trademarks of their respective holders. While the color of the motorhomes exterior and the interior fabrics depicted in this sales brochure are fair and reasonable depictions, the colors depicted may not be an exact match of the actual colors because of the variances in photo-processing and variances caused by inserting the photographs within the sales brochure. Due to product improvements and/or changes during the course of the model year, photography represented herein may not reflect exact offerings in your unit. Please confirm item availability with your dealer at the time of the order. Due to product improvements, changes during the model year and/or transcription errors that may occur, information represented within this brochure may not be accurate at the time of your purchase. If certain information is significant to your purchasing decision, please confirm the information with your dealer prior to submitting your order. 9.31.00.



MONACO

A Division of Monaco Coach Corporation

91320 Industrial Way, Coburg, Oregon 97408 • Toll Free (800) 634-0855 or (541) 686-8011
Indiana Division 606 Nelson's Parkway, Wakarusa, Indiana 46573 • Toll Free (800) 650-7337

Monaco Coach Corporation is traded on the NYSE under the listing MNC

Chassis and Weight Charts

for the 2001 Knight

Chassis/Engine/Suspension

Chassis	Roadmaster RM 4C
Engine	Cummins 260hp ISB w/electronic fuel injection.
Cubic Inch Displacement	359
Torque	550 lbs.ft. Max @ 1900 rpm
Transmission	Allison T-1000 4-Speed
Alternator	160 Amp
Rear Axle Ratio	4.88:1
Suspension	Neway Air Suspension w/4 Outboard Mounted Airbags & 4 Shock Absorbers
Radial Tires	255/70R/22.5H
Diesel Fuel	75 Gallons
Optional Engines*	Cummins 300hp ISB w/Allison 3000M H Transmission, 26,000 GVW & Charged Air Cummins 300hp ISB w/Allison 3000M H Transmission & Charged Air Cummins 315hp ISC w/Allison 3000M H Transmission & Charged Air

*Optional Engines are available only on select floorplans and may have different capacities than those listed above for the standard 260hp engine. Please check with your dealer for availability and specification information.

Weights*	34 Y	34 H	36 Z	36 R
Gross Vehicle Weight Rating(lbs)	22,000	26,000	26,000	26,000
Gross Combined Weight Rating(lbs)	26,000	31,000	31,000	31,000
Front Gross Axle Weight Rating(lbs)	8,500	10,500	10,500	10,500
Rear Gross Axle Weight Rating(lbs)	13,500	15,500	15,500	15,500

Measurements

	34 Y	34 H	36 Z	36 R
Wheelbase	204"	204"	228"	228"
Overall Length	34'4"	34'4"	36'4"	36'4"
Height (with A/C)	11'9"	11'9"	11'9"	11'9"
Interior Height	6'6"	6'6"	6'6"	6'6"
Interior Width	94.5"	94.5"	94.5"	94.5"
Exterior Width	100.5"	100.5"	100.5"	100.5"

Tank Capacities

All Tank Capacities are Approximate. Actual "Useable Capacity" May Vary as a Result of Variances in Installation and Fabrication of the Tires.

Water Heater (Gal.)	10	10	10	10
Grey Water (Gal.)	52	52	52	52
Black Water (Gal.)	52	52	52	52
Fresh Water (Gal.)	80	80	80	80
LP Tank (Gal.)**	38	38	38	38

**Actual filled LP capacity is 80% of listing due to safety shut off required on tank.

The information printed in this brochure reflects product design, fabrication, and component parts at the date of printing. The manufacturer reserves the right, at any time, to make changes in product design or material or component specifications as its sole option, without notice. This includes the substitution of components of a different brand or trade name which will result in comparable performance. All information printed in this brochure is subject to change after the date of printing. Some features shown or mentioned in this brochure are optional and may only be available in selected floorplans. Photographs may show props or decorations that are not standard equipment on Monaco models. Monaco, the Monaco logo and its design, are registered trademarks. All other products and company names are trademarks and/or registered trademarks of their respective holders. While the color of the motorhomes exterior and the interior fabrics depicted in this sales brochure are fair and reasonable depictions, the colors depicted may not be an exact match of the actual colors because of the variances in photo-processing and variances caused by inserting the photographs within the sales brochure. Due to product improvements and/or changes during the course of the model year, photography represented herein may not reflect exact offerings in your unit. Please confirm item availability with your dealer at the time of the order. Due to product improvements, changes during the model year and/or transcription errors that may occur, information represented within this brochure may not be accurate at the time of your purchase. If certain information is significant to your purchasing decision, please confirm the information with your dealer prior to submitting your order. 9.31.00.



MONACO

A Division of Monaco Coach Corporation

91320 Industrial Way, Coburg, Oregon 97408 • Toll Free (800) 634-0855 or (541) 686-8011

Indiana Division 606 Nelson's Parkway, Wakarusa, Indiana 46573 • Toll Free (800) 650-7337

Monaco Coach Corporation is traded on the NYSE under the listing MNC