



LA PALMA 2001





LA PALMA 2001



Specifications

for the 2001 La Palma

Body Construction

- Alumaframe Superstructure w/Five Year Warranty
- Aluminum Roof
- Steel Cage Cockpit Construction
- Fiberglass Insulation in Roof & Walls
- Gelcoat Walls
- Interior Paneling w/3/4" Bead Foam Insulation
- Ozite Ceiling
- Steel Framed Floor on Steel Trusses
- 1 1/2" Steel Tube w/Laminated 5/8" Structurewood Flooring
- Structure Foam Insulated Underbelly w/Luan Backer
- One-Piece Polyethylene Storage Compartments w/Pass Through Storage
- Exterior Storage Compartment Doors w/Integrated Single Handle Latches
- Roof Ladder
- Exterior Assist Handle
- Fiberglass Front & Rear Cap w/Integrated Bumper
- Large Curved Aerodynamic Windshield
- Large Single Headlamp w/Turn Signal
- Underhood Utility Light
- Mud Flaps
- Radius Entry Door w/Deadbolt Latch
- 5000 lb Hitch Receiver w/Skid Bar & 6-Point Connector
- Spare Tire in Basement (N/A 36D)
- One Piece Engine Access Door
- Undercoating
- Auxiliary Start Circuit
- Stainless Steel Wheel Covers

Options

- Stainless Steel Wheel Simulators
- 4-Point Hydraulic Jacks

Cockpit Features

- CD Player/Radio w/Four Speakers
- Pilot & Co-Pilot Fabric Recliner Seats
- Windshield Wipers w/Intermittent Wiper Control
- Fiberglass Automotive Dash-Soft Touch
- Multi Position Sunvisors
- Power Steering
- Cruise Control
- Engine Cover
- Tilt Steering Wheel
- Electric Automotive Horn
- Floor Mats
- Power Heated Remote Mirrors
- Rear Vision System Prep

Options

- Leather Faced Pilot/Co-Pilot Six-Way Power Seats
- Six Way Power Pilot Seat

- Six Way Power Co-Pilot Seat
- Driver's Door
- CB Prep
- Dash Workstation
- Rear Vision System

Appliances and Accessories

- 8 cu. ft. 2-Way Refrigerator
- High Output 3-Burner Range/17" Oven (opt in 32 PBD)
- Space Saver Microwave
- Systems Monitor Panel
- Cable TV Hook-Up & Telephone Jacks
- TV Antenna & Booster w/12V Recept & TV Jacks
- 19" Color TV w/Remote Control in Living Area

Options

- Convection Microwave
- 8 cu.ft. 2-Way Refrigerator w/Icemaker
- Satellite Dish Prep
- High Output 3-Burner Cooktop Range W/O Oven (std in 32 PBD)
- 4-Door Refrigerator w/Icemaker (N/A 32S, 32PBD, 34S, 34F)
- 13" Color TV w/Remote Control in Bedroom
- VCR w/Video Switching Box
- Washer/Dryer Prep w/10 Gallon Water Heater (32PBD & 34 PBD Only, Requires 50 Amp Service)
- Combination Washer/Dryer (32PBD & 34PBD Only, Requires Washer/Dryer Prep)
- AM/FM Stereo Cassette (deletes CD)

Interiors

- Western Oak Cabinets
- Hardwood Cabinet Ends
- Adjustable Shelves in Kitchen Pantry
- Wallpaper Border in Bedroom & Bath
- Raised Panel Hardwood Doors
- Low Friction Roller Drawer Guides
- Marble-Like Kitchen & Bathroom Countertops
- Medicine Cabinet
- Wood Drink Tray on Co-Pilot Side
- Bedsread w/Pillows
- Towel Bar in Bathroom
- Easy Bed Sleeper Sofa (N/A 32 PBD, 34 SBS, 34 SBD)
- Headboard w/Bed to Rear
- Pocket Doors
- Rotocast Booth Dinette w/Storage Drawers
- Overhead Cabinets in Slide-Out Above Sofa (N/A 32PBD, 34SBS, 34SBD, 36SAD)
- Hide-A-Bed Sofa (32PBD, 34SBS, 34SBD Only)
- Nylon Carpeting & Pad in Living Area, Hallway & Bedroom
- Mirror at Galley Backsplash
- Brass Finished Cabinet Hardware

Specifications

for the 2001 La Palma

Body Construction

- Alumaframe Superstructure w/Five Year Warranty
- Aluminum Roof
- Steel Cage Cockpit Construction
- Fiberglass Insulation in Roof & Walls
- Gelcoat Walls
- Interior Paneling w/3/4" Bead Foam Insulation
- Ozite Ceiling
- Steel Framed Floor on Steel Trusses
- 1 1/2" Steel Tube w/Laminated 5/8" Structurewood Flooring
- Structure Foam Insulated Underbelly w/Luan Backer
- One-Piece Polyethylene Storage Compartments w/Pass Through Storage
- Exterior Storage Compartment Doors w/Integrated Single Handle Latches
- Roof Ladder
- Exterior Assist Handle
- Fiberglass Front & Rear Cap w/Integrated Bumper
- Large Curved Aerodynamic Windshield
- Large Single Headlamp w/Turn Signal
- Underhood Utility Light
- Mud Flaps
- Radius Entry Door w/Deadbolt Latch
- 5000 lb Hitch Receiver w/Skid Bar & 6-Point Connector
- Spare Tire in Basement (N/A 36D)
- One Piece Engine Access Door
- Undercoating
- Auxiliary Start Circuit
- Stainless Steel Wheel Covers

Options

- Stainless Steel Wheel Simulators
- 4-Point Hydraulic Jacks

Cockpit Features

- CD Player/Radio w/Four Speakers
- Pilot & Co-Pilot Fabric Recliner Seats
- Windshield Wipers w/Intermittent Wiper Control
- Fiberglass Automotive Dash-Soft Touch
- Multi Position Sunvisors
- Power Steering
- Cruise Control
- Engine Cover
- Tilt Steering Wheel
- Electric Automotive Horn
- Floor Mats
- Power Heated Remote Mirrors
- Rear Vision System Prep

Options

- Leather Faced Pilot/Co-Pilot Six-Way Power Seats
- Six Way Power Pilot Seat

- Six Way Power Co-Pilot Seat
- Driver's Door
- CB Prep
- Dash Workstation
- Rear Vision System

Appliances and Accessories

- 8 cu. ft. 2-Way Refrigerator
- High Output 3-Burner Range/17" Oven (opt in 32 PBD)
- Space Saver Microwave
- Systems Monitor Panel
- Cable TV Hook-Up & Telephone Jacks
- TV Antenna & Booster w/12V Recept & TV Jacks
- 19" Color TV w/Remote Control in Living Area

Options

- Convection Microwave
- 8 cu.ft. 2-Way Refrigerator w/Icemaker
- Satellite Dish Prep
- High Output 3-Burner Cooktop Range W/O Oven (std in 32 PBD)
- 4-Door Refrigerator w/Icemaker (N/A 32S, 32PBD, 34S, 34F)
- 13" Color TV w/Remote Control in Bedroom
- VCR w/Video Switching Box
- Washer/Dryer Prep w/10 Gallon Water Heater (32PBD & 34 PBD Only, Requires 50 Amp Service)
- Combination Washer/Dryer (32PBD & 34PBD Only, Requires Washer/Dryer Prep)
- AM/FM Stereo Cassette (deletes CD)

Interiors

- Western Oak Cabinets
- Hardwood Cabinet Ends
- Adjustable Shelves in Kitchen Pantry
- Wallpaper Border in Bedroom & Bath
- Raised Panel Hardwood Doors
- Low Friction Roller Drawer Guides
- Marble-Like Kitchen & Bathroom Countertops
- Medicine Cabinet
- Wood Drink Tray on Co-Pilot Side
- Bedsprad w/Pillows
- Towel Bar in Bathroom
- Easy Bed Sleeper Sofa (N/A 32 PBD, 34 SBS, 34 SBD)
- Headboard w/Bed to Rear
- Pocket Doors
- Rotocast Booth Dinette w/Storage Drawers
- Overhead Cabinets in Slide-Out Above Sofa (N/A 32PBD, 34SBS, 34SBD, 36SAD)
- Hide-A-Bed Sofa (32PBD, 34SBS, 34SBD Only)
- Nylon Carpeting & Pad in Living Area, Hallway & Bedroom
- Mirror at Galley Backsplash
- Brass Finished Cabinet Hardware

Day/Night Pleated Shades in Living Room & Bedroom
Window Lambrequins
Sink Cutting Board
Fabric Barrel Chair
One-Piece Fiberglass Tub/Shower
Vinyl Floor in Bathroom
Wilsonart Flooring in Kitchen (36D Only)
Ceramic Tile Floor in Kitchen (32S, 34S, 34F, 34SBS, 34SBD, 36G Only)

Options

Decors: Holly Berry, Smoky Mountains, Peacock Colony Oak or Walnut Cabinets
Dinette Table w/Two Free Standing Chairs & two Folding Chairs
Fabric Recliner
Raised Panel Insert on Refrigerator Door
Leather Faced Recliner
Leather Faced Magic Bed (N/A 32PBD, 34SBS, 34SBD, 36SAD)
Fabric Magic Bed (N/A 32PBD, 34SBS, 34SBD, 36SAD)
Twin Beds (Only 34S & 36G)
Queen Island Bed Head to Rear (34F, 36G Only)

Electrical Systems and Lights

55 Amp Electronic 12V Power Converter
30 Amp 120V Distribution Panel & Cord
Two 6V Deep Cycle Batteries
110 Volt Outlet Over Dinette Table
Battery Disconnect Switches Inside Stepwell
Porch Light
Patio Receptacle
Lights in Outside Storage Compartments
12V Incandescent Lights in Ceiling
Cosmetic Light in Bathroom
Automatic Light in Wardrobe
Power Entry Step w/Light
5.0kw Generator
18" Fluorescent Ceiling w/Dual Bulb (Living Area Only)
Water Pump Switch
VCR Prep

Options

5.5kw Generator
1500 Watt Inverter w/Two Additional Batteries
Energy Management System w/50 Amp Service
50 Amp Service

Heating, Vents and Air Conditioning

Electronic Ignition Furnace (31M BTU in 32S/35M BTU in all others)
One 13,500 BTU w/Ducted Air & Wall Thermostat (N/A 36SAD, 36D, 36G)
Wet Bay w/12V Heater
In Floor Ducted Heating System
Dash Heating & Air Conditioning System

w/Defroster
12V Roof Vent in Bathroom

Options

Two 13,500 BTU w/Ducted Air & Wall Thermostat (36D & 36G Only)
Cold Weather Package
12V Attic Fan

Plumbing and LP Systems

Demand Water System & Water Pump
6 Gallon LP Gas/Electric Water Heater w/Electronic Ignition
Water Heater By-Pass Valve
Gravity or Pressurized Water Fill
Glass Shower Door w/Brass Frame
Porcelain Toilet w/Sprayer
Insulated Utility Bay

Options

Water Purifier in Kitchen
Neo Angled Bath Tub (N/A 34F, 34SBS, 34SBD, 36G)
10 Gallon Gas/Electric Water Heater w/Electronic Ignition (N/A 34F)

Windows, Doors and Awnings

Tinted Dual Pane Sliding Windows Throughout
Radius Entry Door w/Clear Glass, Roller Shade, Screen Door & Anti-Skid Steps
Slide-Out Room Awning
Awning Rail
Tinted Skylight in Bathroom

Options

Automatic Patio Awning
Window Awnings (One on Double Slide-Outs)
Acrylic Patio Awning w/Brushed Aluminum Arms

Safety Features

Fire Extinguisher 10:BC
Deadbolt Lock on Entrance Door
120V GFI Protected Circuit
LP Gas Detector
Smoke Detector
Carbon Monoxide Detector
Driver & Passenger Three Point Seat Belts
Third Brake Safety Light
Egress Window(s)

Due to product improvements, changes during the model year and/or transcription errors that may occur, information represented within this brochure may not be accurate at the time of your purchase. If certain information is significant to your purchasing decision, please confirm the information with your dealer prior to submitting your order.

Day/Night Pleated Shades in Living Room & Bedroom
Window Lambrequins
Sink Cutting Board
Fabric Barrel Chair
One-Piece Fiberglass Tub/Shower
Vinyl Floor in Bathroom
Wilsonart Flooring in Kitchen (36D Only)
Ceramic Tile Floor in Kitchen (32S, 34S, 34F, 34SBS, 34SBD, 36G Only)

Options

Decors: Holly Berry, Smoky Mountains, Peacock Colony Oak or Walnut Cabinets
Dinette Table w/Two Free Standing Chairs & two Folding Chairs
Fabric Recliner
Raised Panel Insert on Refrigerator Door
Leather Faced Recliner
Leather Faced Magic Bed (N/A 32PBD, 34SBS, 34SBD, 36SAD)
Fabric Magic Bed (N/A 32PBD, 34SBS, 34SBD, 36SAD)
Twin Beds (Only 34S & 36G)
Queen Island Bed Head to Rear (34F, 36G Only)

Electrical Systems and Lights

55 Amp Electronic 12V Power Converter
30 Amp 120V Distribution Panel & Cord
Two 6V Deep Cycle Batteries
110 Volt Outlet Over Dinette Table
Battery Disconnect Switches Inside Stepwell
Porch Light
Patio Receptacle
Lights in Outside Storage Compartments
12V Incandescent Lights in Ceiling
Cosmetic Light in Bathroom
Automatic Light in Wardrobe
Power Entry Step w/Light
5.0kw Generator
18" Fluorescent Ceiling w/Dual Bulb (Living Area Only)
Water Pump Switch
VCR Prep

Options

5.5kw Generator
1500 Watt Inverter w/Two Additional Batteries
Energy Management System w/50 Amp Service
50 Amp Service

Heating, Vents and Air Conditioning

Electronic Ignition Furnace (31M BTU in 32S/35M BTU in all others)
One 13,500 BTU w/Ducted Air & Wall Thermostat (N/A 36SAD, 36D, 36G)
Wet Bay w/12V Heater
In Floor Ducted Heating System
Dash Heating & Air Conditioning System

w/Defroster
12V Roof Vent in Bathroom

Options

Two 13,500 BTU w/Ducted Air & Wall Thermostat (36D & 36G Only)
Cold Weather Package
12V Attic Fan

Plumbing and LP Systems

Demand Water System & Water Pump
6 Gallon LP Gas/Electric Water Heater w/Electronic Ignition
Water Heater By-Pass Valve
Gravity or Pressurized Water Fill
Glass Shower Door w/Brass Frame
Porcelain Toilet w/Sprayer
Insulated Utility Bay
Options
Water Purifier in Kitchen
Neo Angled Bath Tub (N/A 34F, 34SBS, 34SBD, 36G)
10 Gallon Gas/Electric Water Heater w/Electronic Ignition (N/A 34F)

Windows, Doors and Awnings

Tinted Dual Pane Sliding Windows Throughout
Radius Entry Door w/Clear Glass, Roller Shade, Screen Door & Anti-Skid Steps
Slide-Out Room Awning
Awning Rail
Tinted Skylight in Bathroom
Options
Automatic Patio Awning
Window Awnings (One on Double Slide-Outs)
Acrylic Patio Awning w/Brushed Aluminum Arms

Safety Features

Fire Extinguisher 10:BC
Deadbolt Lock on Entrance Door
120V GFI Protected Circuit
LP Gas Detector
Smoke Detector
Carbon Monoxide Detector
Driver & Passenger Three Point Seat Belts
Third Brake Safety Light
Egress Window(s)

Due to product improvements, changes during the model year and/or transcription errors that may occur, information represented within this brochure may not be accurate at the time of your purchase. If certain information is significant to your purchasing decision, please confirm the information with your dealer prior to submitting your order.

Color Choices

for the 2001 La Palma

The following designations represent the fabric or carpet usage for all seven (7) interior decors:

A - Sofa, B - Bedspread, C - Dining or Chair, D - Vinyl/Leather Dash/Furniture, E - Carpet

A B C D E

Smokey Mountains



Peacock



Holly Berry



While the color of the motorhomes exterior and the interior fabrics depicted in this sales brochure are intended to depict the exterior and interior choices available, the colors depicted may not be an exact match of the actual colors because of the variances in printing, photo-processing, the kind of print services used and variances caused by inserting the photographs within the sales brochure. Due to product improvements and/or changes during the course of the model year, photography represented herein may not reflect exact offerings in your unit. Please confirm item availability with your dealer at the time of the order.

Color Choices

for the 2001 La Palma

The following designations represent the fabric or carpet usage for all seven (7) interior decors:

A - Sofa, B - Bedspread, C - Dining or Chair, D - Vinyl/Leather Dash/Furniture, E - Carpet

A B C D E

Smokey Mountains



Peacock



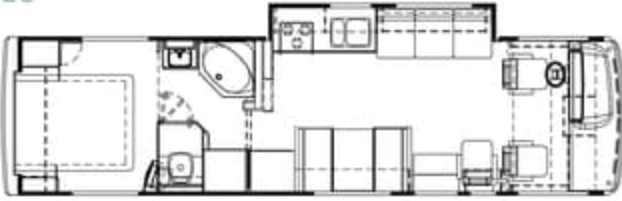
Holly Berry



While the color of the motorhomes exterior and the interior fabrics depicted in this sales brochure are intended to depict the exterior and interior choices available, the colors depicted may not be an exact match of the actual colors because of the variances in printing, photo-processing, the kind of print services used and variances caused by inserting the photographs within the sales brochure. Due to product improvements and/or changes during the course of the model year, photography represented herein may not reflect exact offerings in your unit. Please confirm item availability with your dealer at the time of the order.

Floorplans and options for the 2001 La Palma

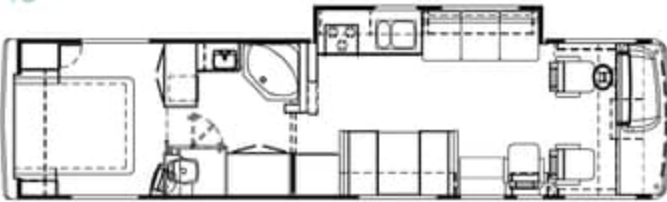
32S



32PBD



34S



34F

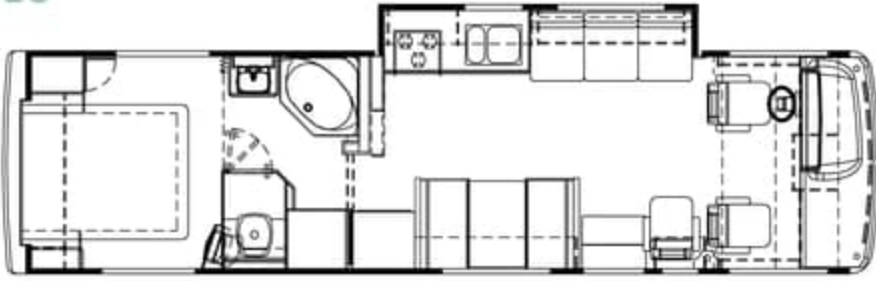


34PBD

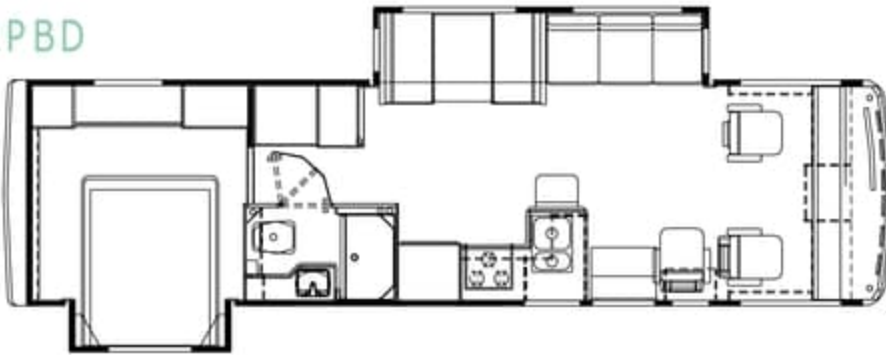


Floorplans and options for the 2001 La Palma

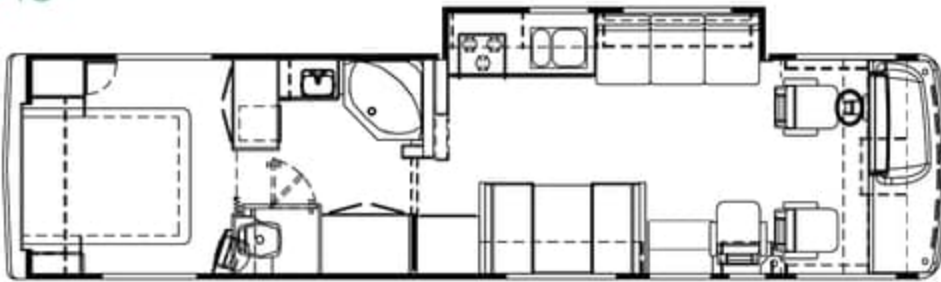
32S



32PBD



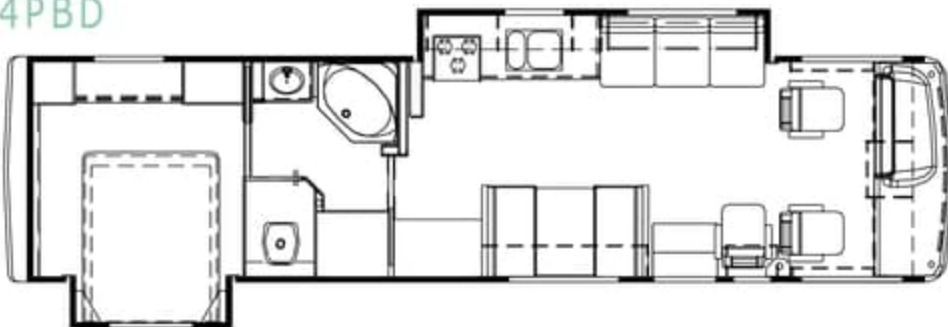
34S



34F



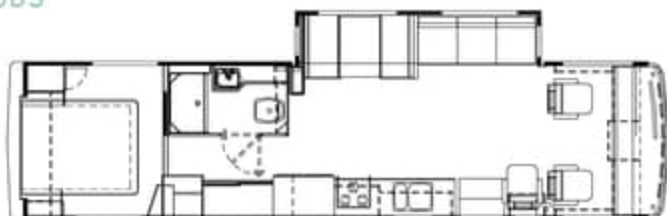
34PBD



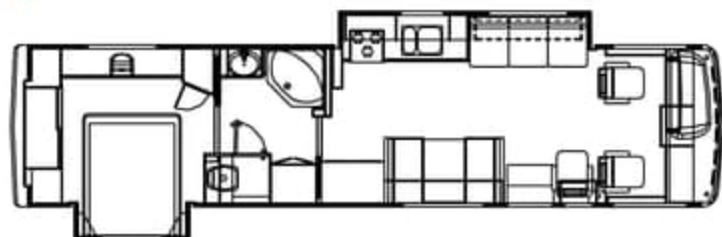
34SBD



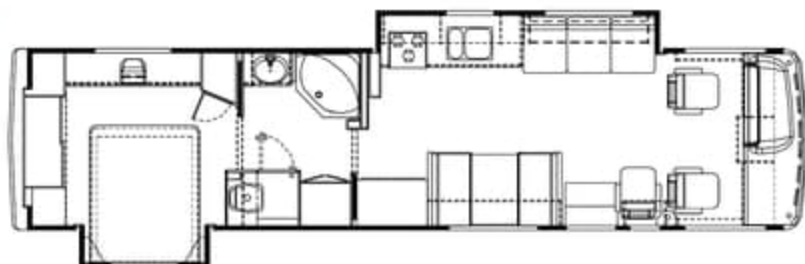
34SBS



36SAD



36D



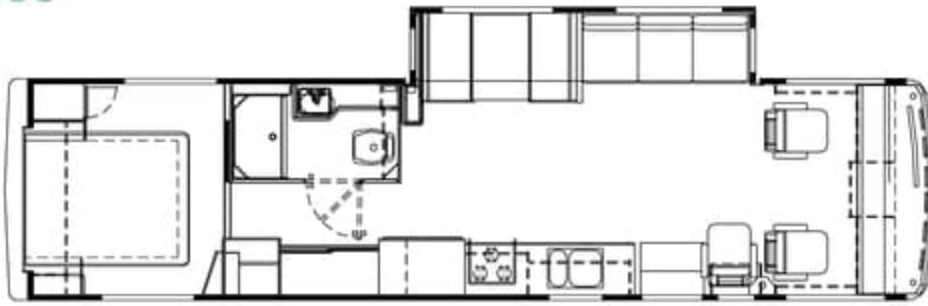
36G



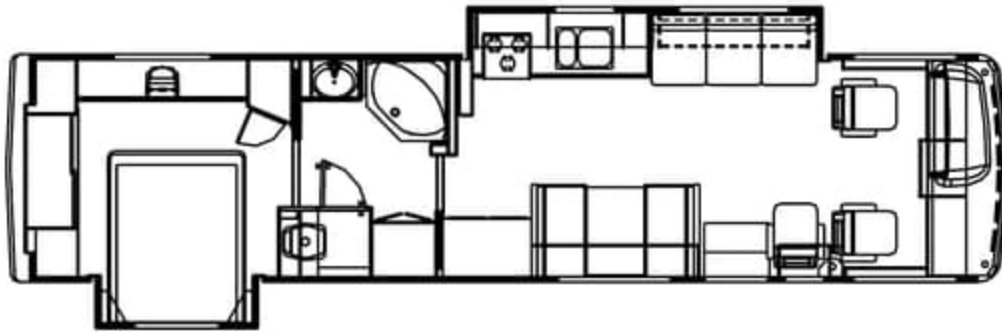
34SBD



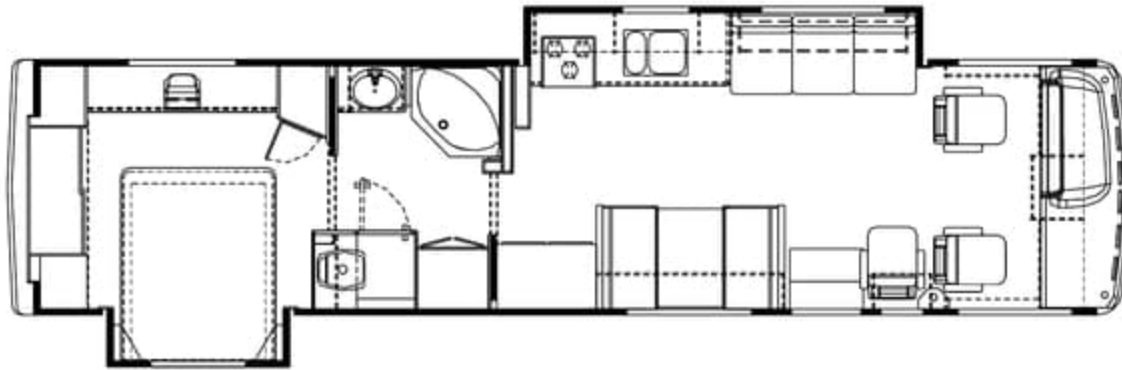
34SBS



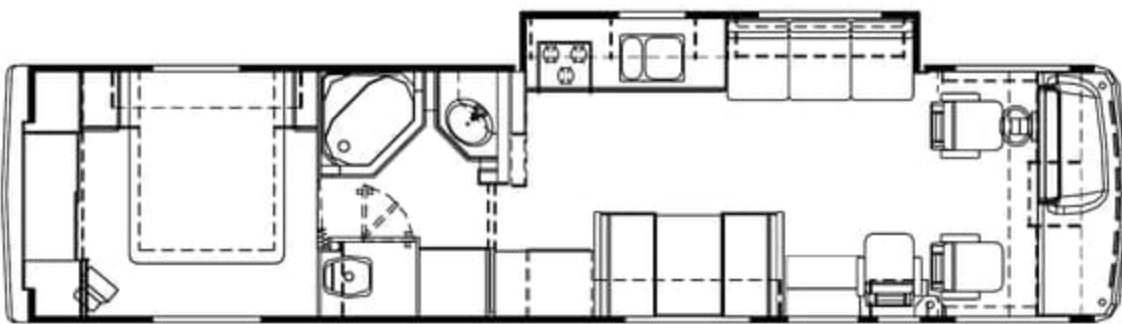
36SAD



36D



36G



Chassis and Weight Charts

for the 2001 La Palma

Ford Chassis/Engine/Suspension

Engine	Ford 6.8L Triton V10
Cubic Inch Displacement	415
Transmission	4-Speed Automatic w/Overdrive
Alternator	130 Amp
Rear Axle Ratio	5.38:1
Radial Tires	245/70R/19.5F

Weights	32' Models	34' Models	36' Models
Gross Vehicle Weight Rating	20,500lbs	20,500lbs	20,500lbs
Gross Combined Weight Rating	25,500lbs	25,500lbs	25,500lbs
Front Gross Axle Weight Rating	7,000lbs	7,000lbs	7,000lbs
Rear Gross Axle Weight Rating	13,500lbs	13,500lbs	13,500lbs

Measurements

Wheelbase	208"	228"	228" (238" 36SA D, 36D)
Exterior Height	11'8"	11'8"	11'8"
Exterior Width	100.5"	100.5"	100.5"
Exterior Length	32'8"	34'10"	36'6"

Tank Capacities**

(All Tank Capacities are approximate)

Fuel	75 gallons	75 gallons	75 gallons
Grey Water	45 gallons	45 gallons	45 gallons
Black Water	45 gallons	45 gallons	45 gallons
Fresh Water	67 gallons	67 gallons	67 ^(55 on 36D, 36SA D)
LP Tank***	32.9 gallons	32.9 gallons	32.9 gallons

** All tank capacities are approximate. Actual "useable capacity" may vary based upon specific installation.

*** Tank manufacturer's listed water capacity (WC) actual filled. LP capacity is 80% of listing due to safety shut off required at tank.

Chassis and Weight Charts

for the 2001 La Palma

Ford Chassis/Engine/Suspension

Engine	Ford 6.8L Triton V10
Cubic Inch Displacement	415
Transmission	4-Speed Automatic w/Overdrive
Alternator	130 Amp
Rear Axle Ratio	5.38:1
Radial Tires	245/70R/19.5F

Weights	32' Models	34' Models	36' Models
Gross Vehicle Weight Rating	20,500lbs	20,500lbs	20,500lbs
Gross Combined Weight Rating	25,500lbs	25,500lbs	25,500lbs
Front Gross Axle Weight Rating	7,000lbs	7,000lbs	7,000lbs
Rear Gross Axle Weight Rating	13,500lbs	13,500lbs	13,500lbs

Measurements	32' Models	34' Models	36' Models
Wheelbase	208"	228"	228" (238" 36SA D, 36D)
Exterior Height	11'8"	11'8"	11'8"
Exterior Width	100.5"	100.5"	100.5"
Exterior Length	32'8"	34'10"	36'6"

Tank Capacities**	(All Tank Capacities are approximate)		
Fuel	75 gallons	75 gallons	75 gallons
Grey Water	45 gallons	45 gallons	45 gallons
Black Water	45 gallons	45 gallons	45 gallons
Fresh Water	67 gallons	67 gallons	67 (55 on 36D, 36SA D)
LP Tank***	32.9 gallons	32.9 gallons	32.9 gallons

**All tank capacities are approximate. Actual "useable capacity" may vary based upon specific installation.

***Tank manufacturer's listed water capacity (WC) actual filled. LP capacity is 80% of listing due to safety shut off required at tank.