

2001
Embassy
By **TRIPLE E**



RECREATIONAL VEHICLES

Experience the Difference!

2001
Embassy
By **TRIPLE E**



RECREATIONAL VEHICLES

Experience the Difference!

You are completely at home with . . .

THE 2001 EMBASSY



The Embassy 2001 is specifically designed to provide top-of-the-line value at an affordable price. You have your choice of four floorplan configurations from 27 feet to 34 feet in length - all with beautifully designed roomy interiors. The exterior is modern and features an eye catching graphics package complete with front and rear fiberglass masks. If you wish, painted skirts are an attractive option.

In addition to the standard Embassy there is an optional XL package available on the A29, A31 and A34F models. This option provides you with three-season comfort. The thermal pane windows, lighted baggage compartments, enclosed, insulated and heated holding tanks and rear auxiliary heater make the Embassy XL impervious to spring and fall chills.



Left: To help you enjoy your leisure time, you can choose a remote control color TV for the bedroom.



Centre: An exterior shower is a popular option.



Right: Carpeted galvanized steel baggage compartments are lockable and afford complete protection for your valuables whether you're on the road or parked.

You are completely at home with . . .

THE 2001 EMBASSY



The Embassy 2001 is specifically designed to provide top-of-the-line value at an affordable price. You have your choice of four floorplan configurations from 27 feet to 34 feet in length - all with beautifully designed roomy interiors. The exterior is modern and features an eye catching graphics package complete with front and rear fiberglass masks. If you wish, painted skirts are an attractive option.

In addition to the standard Embassy there is an optional XL package available on the A29, A31 and A34F models. This option provides you with three-season comfort. The thermal pane windows, lighted baggage compartments, enclosed, insulated and heated holding tanks and rear auxiliary heater make the Embassy XL impervious to spring and fall chills.



Left: To help you enjoy your leisure time, you can choose a remote control color TV for the bedroom.



Centre: An exterior shower is a popular option.



Right: Carpeted galvanized steel baggage compartments are lockable and afford complete protection for your valuables whether you're on the road or parked.



While the exterior look of the Embassy is striking and dynamic, the interior is warm, rich and comfortable. The real beauty of it all is that you have plenty of flexibility to give your Embassy a "custom look". Choose one of four different floor plans and then select from three attractive, color coordinated designer decors.

Meal planning and preparation are easier than ever with the Embassy's fully equipped galley. You'll feel right at home with the standard Dometic two door refrigerator, cook top with oven, and microwave. There's even an optional coffee maker.

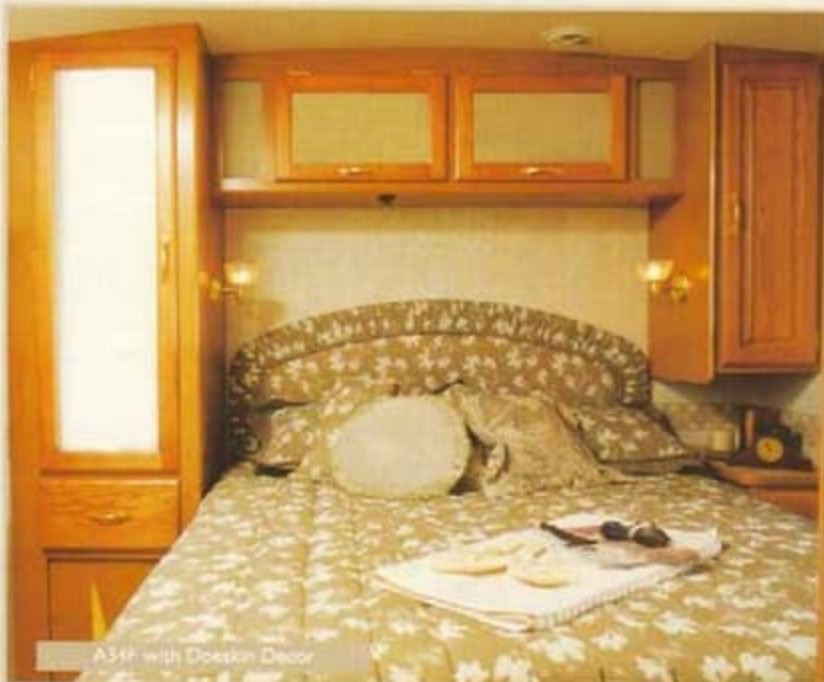
The 2001 Embassy . . .
Excellent Performance, Exceptional Value.



Special attention given to driver comfort incorporates a large captain's chair and automotive style dash to make driving the Embassy enjoyable.



When you choose the A34F Embassy with the slide-out, you add plenty of extra living space. Extra storage provided by the convenient slide out pantry in the galley is a real bonus.



At the end of the day, you always get a good night's sleep on the large, residential quality inner spring coil mattress.



While the exterior look of the Embassy is striking and dynamic, the interior is warm, rich and comfortable. The real beauty of it all is that you have plenty of flexibility to give your Embassy a "custom look". Choose one of four different floor plans and then select from three attractive, color coordinated designer decors.

Meal planning and preparation are easier than ever with the Embassy's fully equipped galley. You'll feel right at home with the standard Dometic two door refrigerator, cook top with oven, and microwave. There's even an optional coffee maker.

The 2001 Embassy . . .
Excellent Performance, Exceptional Value.

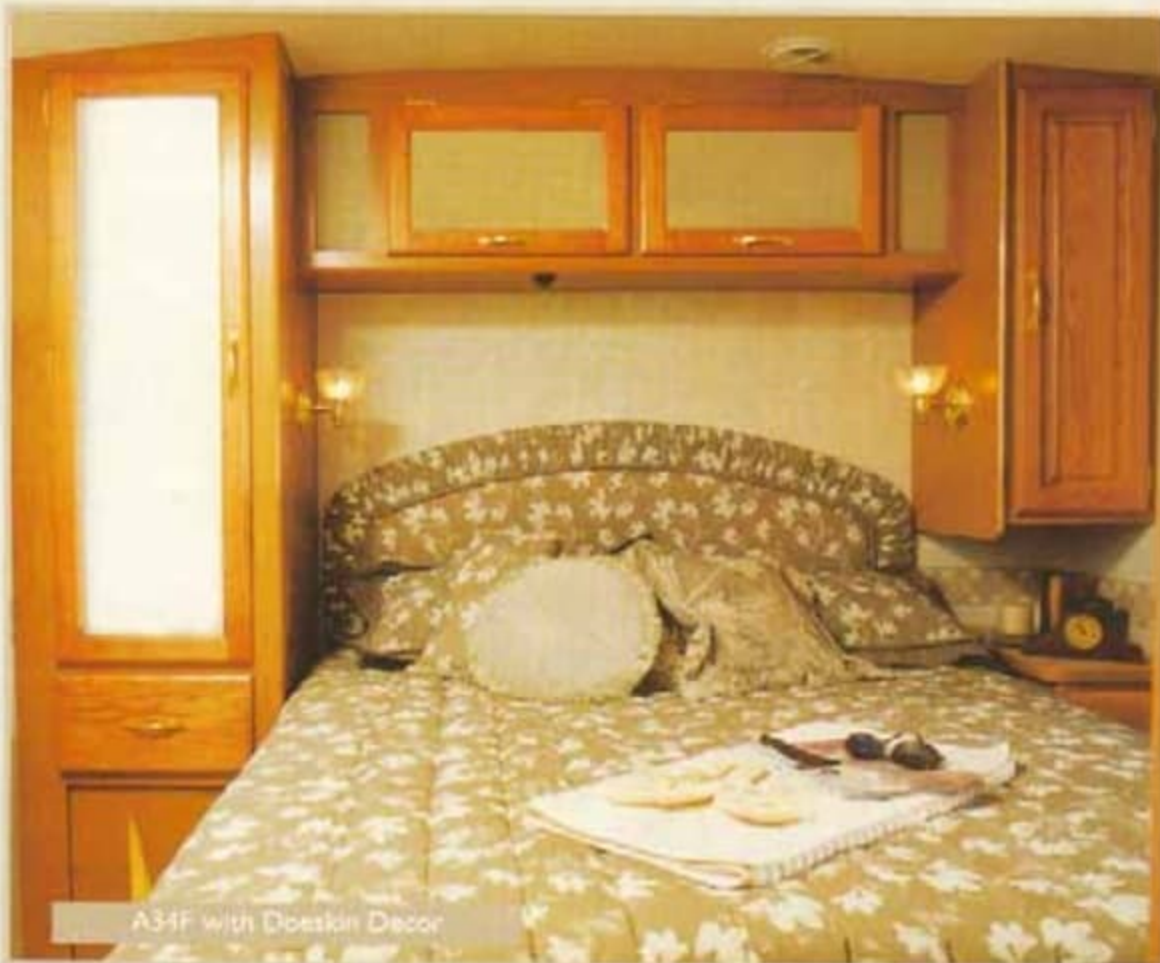


Special attention given to driver comfort incorporates a large captain's chair and automotive style dash to make driving the Embassy enjoyable.



A34F with Slide Out Pantry Insert

When you choose the A34F Embassy with the slide-out, you add plenty of extra living space. Extra storage provided by the convenient slide out pantry in the galley is a real bonus.



A34F with Doestian Decor

At the end of the day, you always get a good night's sleep on the large, residential quality inner spring coil mattress.

EMBASSY FEATURES

VEHICULAR

Air Bag Assist Rear Suspension	O
Automotive Undercoating	S
Auxiliary Coach Battery (2x12V)	S
Battery Boost Switch	S
Battery Disconnect Switch	S
BIRD Bi Directional Isolator Relay Delay Battery Charging	S
Block Heater	S
Chassis Air Conditioning	S
Cruise Control	S
Chassis — Ford - 6.8L V10 Triton	S
Chassis — WCC - GM 8.1L V8 Vortex N/A A34F	O
Factory PDI	O
High Mounted Stoplight - LED Long Life	S
HTW Slide Out and Leveling Jacks - (Slide Models Only)	S
Radial Tires	S
Spare Tire and Wheel	S
Single Motor Wet Arm Windshield Wipers c/w Intermittent	S
Steel Reinforced Rear Bumper	S
Tilt Steering Wheel	S
Trailer Hitch Receiver w/wiring - Class III	S
Transmission Cooler (Workhorse/Ford Supplied)	S
Wheel Covers	S
Wheel Simulators	O

CONSTRUCTION

Domed EPDM Roof	S
Gelcoat Fibreglass Front & Rear Masks	S
Galvanized Luggage Compartments c/w Carpet Base	S
Steel Cab Floor, Firewall, and Dash Structure	S
Thermal Pane Windows (A27)	O
Vacuum Bonded, Steel Frame and Insulated Floor Construction	S
Vacuum Bonded, Aluminum Framed, Insulated Roof and Sidewall Const.	S
Vacuum Bonded FRP "Filon" Sidewalls	S

SYSTEMS

120 Volt/12 Volt/55 Amp Converter c/w Charger	S
4.0 KW Microlite Generator	O
Dual Ducted 2x13,500 Roof Air (A34FS Only)	O
Ducted Roof Air Conditioner 13,500 BTU	O
Ducted Roof Air Conditioner 15,000 BTU	O
Ducting for Roof Air Conditioner	S
Electronic Propane Detector	S
Electronic Smoke Detector	S
Electronic CO Detector	S
Forced Air Furnace - 35,000 BTU	S
Generator Ready Package	O
Pre-Wire for Rear View Camera/Monitor (A34F only)	S
Pre-Wire for Rear View Backup Camera (A27, A29 and A31)	O
Rear View Camera/Monitor - B&W	O
Under floor Mounted LP Tank	S

🔴 - New for 2001 S - Standard O - Option

EXTERIOR

Deadbolt Door Latch	S
Electric Entry Step	S
Entry Assist Handle	S
Exterior Shower	O
Extra Large Exterior Storage	S
Locking Luggage Doors	S
Painted Skirts	O
Patio GFI Receptacle	S
Porch Light	S
Power Cord 30 Amp.	S
Rear Bedroom Window (N/A on A34F)	S
Roof Rack & Ladder	O
Screened Entry Door	S

INTERIOR

Automotive "Soft Touch" Headliner	S
Booth Dinette	S
Decorative Bed Spread and Throw Pillows	S
Dry Chemical Fire Extinguisher	S
Free Standing Table and Slat Back Chairs (Slide Models Only)	O
Hide-A-Bed (A34F Only)	O
Innerspring Coil Mattress	S
Linoleum in Lieu of Living Area Carpet Rearwards of Driver's Seat	O
Raised Oak Cabinet Doors	S
Pleated Shades	S
Reclining Driver's and Passenger's Bucket Seats	S
Radius Slider Windows in Living, Galley & Bedroom Area	S
Sofa in lieu of Cocktail Chairs (A29 only)	O
Tinted Windows - Screened	S
Thermostatically Controlled Ceiling Fan (Bedroom)	O
Twin Beds (N/A A27)	O
Venetian Blinds in Galley	S
Vinyl Floor Covering in Galley Area	S
Wall to Wall Carpeting in Living and Bedroom Areas	S
Wall Borders in Galley and Bedroom Areas	S

ENTERTAINMENT

A/C Video Cassette Recorder	O
AC/DC Bedroom TV c/w Remote in Oak Cabinet (N/A A27)	O
AM/FM CD In Dash Stereo	S
AM/FM - Cassette In Dash Stereo	O
AM/FM Cassette Stereo with 8 Stack CD Changer	O
A/C 21" Colour TV c/w Remote Control	S
CB Antenna	O
Exterior Cable TV and Telephone Hook Up	S
TV Antenna c/w Booster	S

LAVATORY

Marine Toilet	S
Power Bath Vent	S
Folding Shower/Tub Door	S
Skylight in Shower	O

EMBASSY FEATURES

VEHICULAR

Air Bag Assist Rear Suspension	O
Automotive Undercoating	S
Auxiliary Coach Battery (2x12V)	S
Battery Boost Switch	S
Battery Disconnect Switch	S
BIRD BI Directional Isolator Relay Delay Battery Charging 🍁	S
Block Heater	S
Chassis Air Conditioning	S
Cruise Control	S
Chassis — Ford - 6.8L V10 Triton	S
Chassis — WCC - GM 8.1L V8 Vortex N/A A34F	O
Factory PDI	O
High Mounted Stoplight - LED Long Life 🍁	S
HWH Slide Out and Leveling Jacks - (Slide Models Only)	S
Radial Tires	S
Spare Tire and Wheel	S
Single Motor Wet Arm Windshield Wipers c/w Intermittent	S
Steel Reinforced Rear Bumper	S
Tilt Steering Wheel	S
Trailer Hitch Receiver w/wiring - Class III	S
Transmission Cooler (Workhorse/Ford Supplied)	S
Wheel Covers	S
Wheel Simulators	O

CONSTRUCTION

Domed EPDM Roof	S
Gelcoat Fibreglass Front & Rear Masks	S
Galvanized Luggage Compartments c/w Carpet Base	S
Steel Cab Floor, Firewall, and Dash Structure	S
Thermal Pane Windows (A27)	O
Vacuum Bonded, Steel Frame and Insulated Floor Construction	S
Vacuum Bonded, Aluminum Framed, Insulated Roof and Sidewall Const.	S
Vacuum Bonded FRP "Filon" Sidewalls	S

SYSTEMS

120 Volt/12 Volt/55 Amp Converter c/w Charger	S
4.0 KW Microlite Generator	O
Dual Ducted 2x13,500 Roof Air (A34FS Only)	O
Ducted Roof Air Conditioner 13,500 BTU	O
Ducted Roof Air Conditioner 15,000 BTU	O
Ducting for Roof Air Conditioner	S
Electronic Propane Detector	S
Electronic Smoke Detector	S
Electronic CO Detector	S
Forced Air Furnace - 35,000 BTU	S
Generator Ready Package	O
Pre-Wire for Rear View Camera/Monitor (A34F only)	S
Pre-Wire for Rear View Backup Camera (A27, A29 and A31) 🍁	O
Rear View Camera/Monitor - B&W	O
Under floor Mounted LP Tank	S

🍁 - New for 2001 S- Standard O-Option

EXTERIOR

Deadbolt Door Latch	S
Electric Entry Step	S
Entry Assist Handle	S
Exterior Shower	O
Extra Large Exterior Storage	S
Locking Luggage Doors	S
Painted Skirts	O
Patio GFI Receptacle	S
Porch Light	S
Power Cord 30 Amp.	S
Rear Bedroom Window (N/A on A34F)	S
Roof Rack & Ladder	O
Screened Entry Door	S

INTERIOR

Automotive "Soft Touch" Headliner	S
Booth Dinette	S
Decorative Bed Spread and Throw Pillows	S
Dry Chemical Fire Extinguisher	S
Free Standing Table and Slat Back Chairs (Slide Models Only) 🍁	O
Hide-A-Bed (A34F Only)	O
Innerspring Coil Mattress	S
Linoleum in Lieu of Living Area Carpet Rearwards of Driver's Seat	O
Raised Oak Cabinet Doors	S
Pleated Shades	S
Reclining Driver's and Passenger's Bucket Seats	S
Radius Slider Windows in Living, Galley, & Bedroom Area	S
Sofa in lieu of Cocktail Chairs (A29 only)	O
Tinted Windows - Screened	S
Thermostatically Controlled Ceiling Fan (Bedroom)	O
Twin Beds (N/A A27)	O
Venetian Blinds in Galley	S
Vinyl Floor Covering in Galley Area	S
Wall to Wall Carpeting in Living and Bedroom Areas	S
Wall Borders in Galley and Bedroom Areas 🍁	S

ENTERTAINMENT

A/C Video Cassette Recorder	O
AC/DC Bedroom TV c/w Remote in Oak Cabinet (N/A A27)	O
AM/FM CD In Dash Stereo 🍁	S
AM/FM - Cassette In Dash Stereo 🍁	O
AM/FM Cassette Stereo with 8 Stack CD Changer 🍁	O
A/C 21" Colour TV c/w Remote Control	S
CB Antenna 🍁	O
Exterior Cable TV and Telephone Hook Up	S
TV Antenna c/w Booster	S

LAVATORY

Marine Toilet	S
Power Bath Vent	S
Folding Shower/Tub Door	S
Skylight in Shower	O

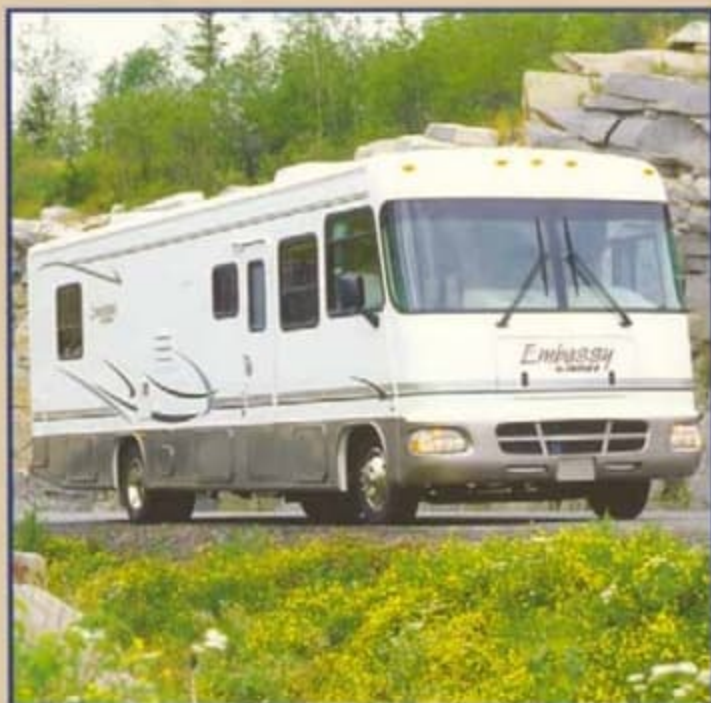
GALLEY

Laminate Counter w/Acrylic Sink	S
Bi-fold Range Cover	S
Coffee Maker	O
Cutting Board Sink Cover	S
Dometic Two Door Fridge - Gas/Electric (6 cu. Ft.)	S
Electronic Ignition Water Heater	S
Dometic Microwave Oven	S
Power Range Hood c/w Monitor Panel and Light	S
Three (3) Burner Stove Top c/w Oven and High Output Burner	S



SPECIAL OPTION PACKAGE

XL Package (N/A A27)	O
Holding Tanks Enclosed, Insulated & Heated	
Light Package in Baggage Compartments	
Rear Auxiliary Heater	
Thermal Pane Windows	



EMBASSY SPECIFICATIONS

	A27	A29	A31	A34F
FORD CHASSIS				
GVWR - lbs (kg)	15700 (7121)	18000 (8165)	18000 (8165)	18000 (8165)
UVW - lbs (kg)	12390 (5620)	13168 (5973)	13269 (6019)	15050 (6818)
NCC - lbs (kg)	3310 (1501)	4832 (2192)	4731 (2146)	2970 (1347)
Engine	6.8L V10 Triton	6.8L V10 Triton	6.8L V10 Triton	6.8L V10 Triton
Transmission	4R100 4 spd auto w/ OD	4R100 4 spd auto w/ OD	4R100 4 spd auto w/ OD	4R100 4 spd auto w/ OD
WCC CHASSIS (optional)				
GVWR - lbs (kg)	17000 (7711)	18000 (8165)	18000 (8165)	n/a
UVW - lbs (kg)	12029 (5456)	12365 (5455)	12786 (5800)	n/a
NCC - lbs (kg)	4971 (2255)	5635 (2556)	5214 (2365)	n/a
Engine	GM 8.1L V8 Vortec	GM 8.1L V8 Vortec	GM 8.1L V8 Vortec	n/a
Transmission	Hydra-Matic 4L80E	Hydra-Matic 4L80E	Hydra-Matic 4L80E	n/a
Wheelbase - inches (mm)	178 (4521)	190 (4826)	190 (4826)	228 (5791)
Length - feet (mm)	28' (8535)	29'3" (8915)	31' (9450)	34'2" (10425)
Width - feet (mm)	8'4" (2534)	8'4" (2534)	8'4" (2534)	8'4" (2534)
Height Incl. A/C - feet (mm)	11'3" (3428)	11'3" (3428)	11'3" (3428)	11'3" (3428)
* Water Tank Cap. - gal (l)	76 (285)	76 (285)	76 (285)	76 (285)
Holding Tank Cap. - gal (l)	78 (295)	78 (295)	78 (295)	78 (295)
Fuel Capacity - gal (l)	75 (284)	75 (284)	75 (284)	75 (284)
Propane Capacity - gal (l)	25.3 (95.8)	25.3 (95.8)	25.3 (95.8)	25.3 (95.8)

* - Includes 6 gallon Water Heater

(All Capacities in U.S. Gallons)



Our Embassy is equipped with Filon filoplated smooth exterior sidewalls. These panels are extremely dent and weather resistant and keep your coach looking its best for years.



GVWR

GROSS VEHICLE WEIGHT RATING means the maximum permissible weight of this motorhome. The GVWR is equal to or greater than the sum of the unloaded vehicle weight (UVW) plus the net carrying capacity (NCC).

UVW

UNLOADED VEHICLE WEIGHT means the weight of this motorhome as built at the factory with full fuel, engine oil, and coolants. The UVW does not include cargo, fresh water, LP gas, occupants, factory or dealer installed accessories.

NCC

NET CARRYING CAPACITY means the maximum weight of all occupants including the driver, personal belongings, food, fresh water, LP gas, tools, tongue weight of towed vehicle, factory or dealer installed accessories, etc., that can be carried by this motorhome. (NCC is equal to or less than GVWR minus UVW.)



NOTE: Please see your dealer for weights of factory installed options.

GALLEY

Laminate Counter w/Acrylic Sink	S
Bi-fold Range Cover	S
Coffee Maker	O
Cutting Board Sink Cover	S
Dometic Two Door Fridge - Gas/Electric (6 cu. Ft.)	S
Electronic Ignition Water Heater	S
Dometic Microwave Oven	S
Power Range Hood c/w Monitor Panel and Light	S
Three (3) Burner Stove Top c/w Oven and High Output Burner	S



SPECIAL OPTION PACKAGE

XL Package (N/A A27)	O
Holding Tanks Enclosed, Insulated & Heated	
Light Package in Baggage Compartments	
Rear Auxiliary Heater	
Thermal Pane Windows	



EMBASSY SPECIFICATIONS

	A27	A29	A31	A34F
FORD CHASSIS				
GVWR - lbs (kg)	15700 (7121)	18000 (8165)	18000 (8165)	18000 (8165)
UVW - lbs (kg)	12390 (5620)	13168 (5973)	13269 (6019)	15030 (6818)
NCC - lbs (kg)	3310 (1501)	4832 (2192)	4731 (2146)	2970 (1347)
Engine	6.8L V10 Triton	6.8L V10 Triton	6.8L V10 Triton	6.8L V10 Triton
Transmission	4R100 4 spd auto w/ OD	4R100 4 spd auto w/ OD	4R100 4 spd auto w/ OD	4R100 4 spd auto w/ OD
WCC CHASSIS (optional)				
GVWR - lbs (kg)	17000 (7711)	18000 (8165)	18000 (8165)	n/a
UVW - lbs (kg)	12029 (5456)	12365 (5455)	12786 (5800)	n/a
NCC - lbs (kg)	4971 (2255)	5635 (2556)	5214 (2365)	n/a
Engine	GM 8.1L V8 Vortex	GM 8.1L V8 Vortex	GM 8.1L V8 Vortex	n/a
Transmission	Hydra-Matic 4L80E	Hydra-Matic 4L80E	Hydra-Matic 4L80E	n/a
Wheelbase - inches (mm)	178 (4521)	190 (4826)	190 (4826)	228 (5791)
Length - feet (mm)	28' (8535)	29'3" (8915)	31' (9450)	34'2" (10425)
Width - feet (mm)	8'4" (2534)	8'4" (2534)	8'4" (2534)	8'4" (2534)
Height Incl. A/C - feet (mm)	11'3" (3428)	11'3" (3428)	11'3" (3428)	11'3" (3428)
* Water Tank Cap. - gal (l)	76 (285)	76 (285)	76 (285)	76 (285)
Holding Tank Cap. - gal (l)	78 (295)	78 (295)	78 (295)	78 (295)
Fuel Capacity - gal (l)	75 (284)	75 (284)	75 (284)	75 (284)
Propane Capacity - gal (l)	25.3 (95.8)	25.3 (95.8)	25.3 (95.8)	25.3 (95.8)

* - Includes 6 gallon Water Heater

(All Capacities in U.S. Gallons)



Our Embassy is equipped with Filon filoplated smooth exterior sidewalls. These panels are extremely dent and weather resistant and keep your coach looking its best for years.



GVWR

GROSS VEHICLE WEIGHT RATING means the maximum permissible weight of this motorhome. The GVWR is equal to or greater than the sum of the unloaded vehicle weight (UVW) plus the net carrying capacity (NCC).

UVW

UNLOADED VEHICLE WEIGHT means the weight of this motorhome as built at the factory with full fuel, engine oil, and coolants. The UVW does not include cargo, fresh water, LP gas, occupants, factory or dealer installed accessories.

NCC

NET CARRYING CAPACITY means the maximum weight of all occupants including the driver, personal belongings, food, fresh water, LP gas, tools, tongue weight of towed vehicle, factory or dealer installed accessories, etc., that can be carried by this motorhome. (NCC is equal to or less than GVWR minus UVW.)



NOTE: Please see your dealer for weights of factory installed options.

QUALITY CONSTRUCTION TECHNIQUES

Triple E Embassy Motorhomes are examples of what can be achieved by combining first class materials with quality controlled construction. The floor is built with a tubular steel frame that is insulated with 1" thick styrofoam and vacuum bonded between 2 layers of plywood. Tubular aluminum framing provides the structural integrity for the walls and the roof, which also features styrofoam insulation.

The FRP exterior is virtually maintenance free, attractive and abrasion resistant. The roof is domed for easy water run off and leaks are a thing of the past because of the one piece EPDM waterproof membrane. This EPDM membrane is also heat reflective for even greater energy efficiency.

Slide out rooms are powered with an advanced hydraulic system. This allows the extra room to extend and retract smoothly and easily.

Interiors look more like upscale homes than Motorhomes. There's plenty of storage space throughout. The oak-finished cabinetry and sculptured, solid oak doors, in addition to looking rich and elegant, are strong and moisture resistant. We construct the cabinets with screws rather than staples to ensure structural integrity and durability.

The designer interior decors are a mixture of style and functionality. We incorporate quality fabrics that are made to handle years of RVing wear and tear and meet or exceed all current flame retardant standards. The venetian blinds, which control light and provide privacy, are accented by the designer window treatments.

All Triple E products are built to CSA (Canadian Standards Association) or RVIA (Recreational Vehicle Industry Association) standards. We were one of the first RV manufacturers to obtain the ISO 9002 certification - your assurance of the careful construction and high quality materials that are part and parcel of every Triple E unit.

INTERIOR DECORS

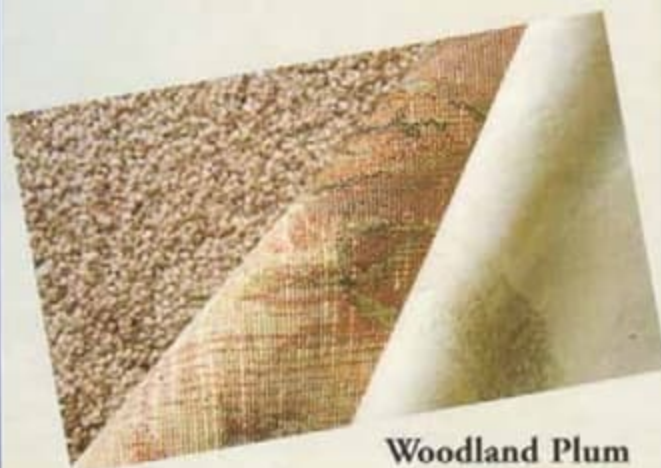
Along with the many choices of floorplans, you are also given the choice of three distinct and tasteful interior design schemes.



Twilight Blue



Doeskin



Woodland Plum

QUALITY CONSTRUCTION TECHNIQUES

Triple E Embassy Motorhomes are examples of what can be achieved by combining first class materials with quality controlled construction. The floor is built with a tubular steel frame that is insulated with 1" thick styrofoam and vacuum bonded between 2 layers of plywood. Tubular aluminum framing provides the structural integrity for the walls and the roof, which also features styrofoam insulation.

The FRP exterior is virtually maintenance free, attractive and abrasion resistant. The roof is domed for easy water run off and leaks are a thing of the past because of the one piece EPDM waterproof membrane. This EPDM membrane is also heat reflective for even greater energy efficiency.

Slide out rooms are powered with an advanced hydraulic system. This allows the extra room to extend and retract smoothly and easily.

Interiors look more like upscale homes than Motorhomes. There's plenty of storage space throughout. The oak-finished cabinetry and sculptured, solid oak doors, in addition to looking rich and elegant, are strong and moisture resistant. We construct the cabinets with screws rather than staples to ensure structural integrity and durability.

The designer interior decors are a mixture of style and functionality. We incorporate quality fabrics that are made to handle years of RVing wear and tear and meet or exceed all current flame retardant standards. The venetian blinds, which control light and provide privacy, are accented by the designer window treatments.

All Triple E products are built to CSA (Canadian Standards Association) or RVIA (Recreational Vehicle Industry Association) standards. We were one of the first RV manufacturers to obtain the ISO 9002 certification - your assurance of the careful construction and high quality materials that are part and parcel of every Triple E unit.

INTERIOR DECORS

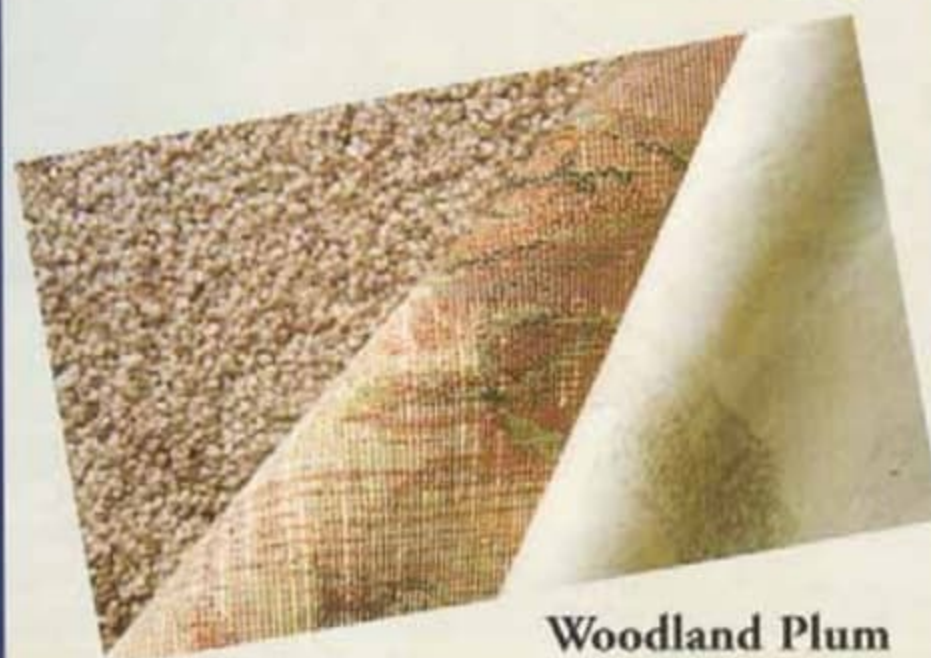
Along with the many choices of floorplans, you are also given the choice of three distinct and tasteful interior design schemes.



Twilight Blue

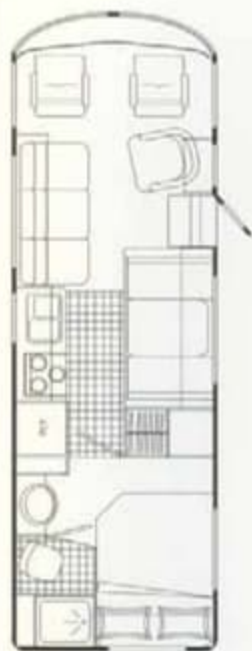


Doeskin



Woodland Plum

EMBASSY FLOORPLANS



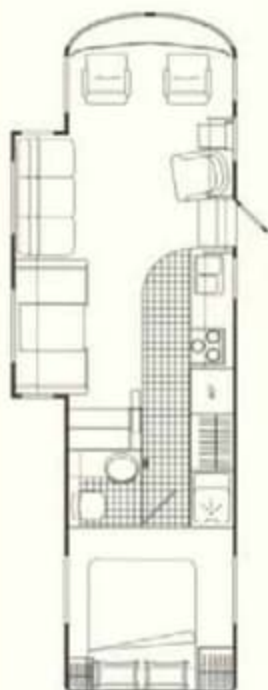
A27



A29



A31



A34F

2 YEAR WARRANTY

Triple E is proud to offer a 2 Year Structural Warranty as well as a 2 Year Warranty on most major components. Please see your dealer for further details.



This combination of labels assures the purchaser that the manufacturer has met or surpassed CSA-CRVA-RVIA standards covering electrical services, gas services, plumbing services, and vehicular safety.

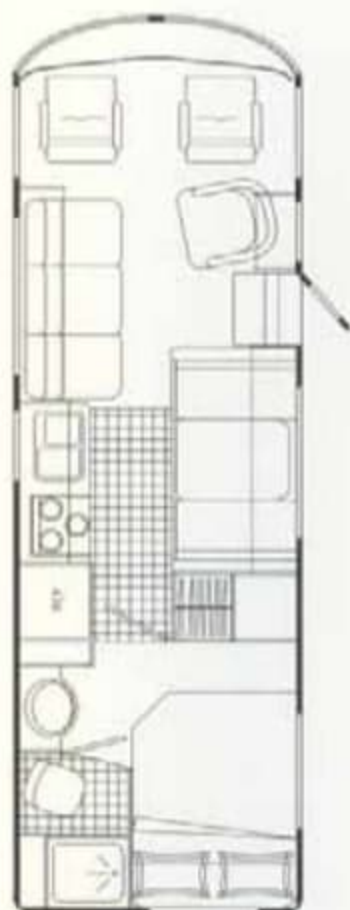
Product improvement is a continuing process at Triple E Recreational Vehicles. Thus we reserve the right to change the specifications on any and all products without prior notice, errors and omissions excepted. Triple E Recreational Vehicles is under no obligation to undertake modification to units manufactured prior to changes in specifications.

Embassy motorhomes exceed 96 inches in width. In some states 96 inches is the maximum width of vehicles travelling some or all state roads. It is the responsibility of the owner to be familiar with the road usage laws of the states in which you travel.

Make sure you visit our website at
www.tripleerv.com



EMBASSY FLOORPLANS



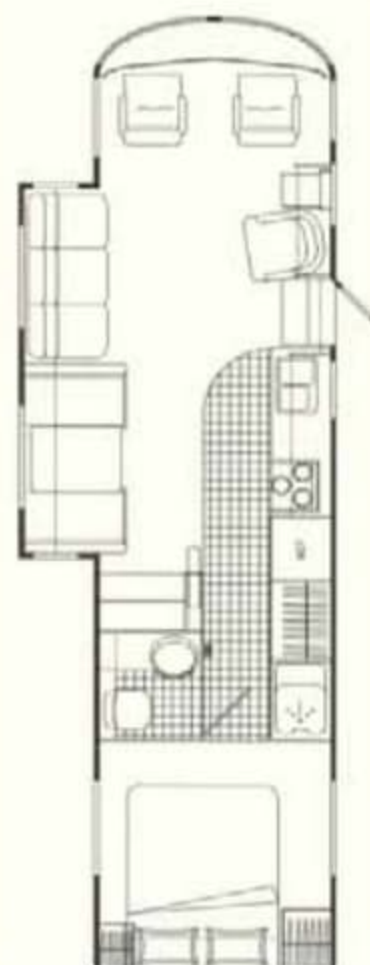
A27



A29



A31



A34F

2 YEAR WARRANTY

Triple E is proud to offer a 2 Year Structural Warranty as well as a 2 Year Warranty on most major components. Please see your dealer for further details.



This combination of labels assures the purchaser that the manufacturer has met or surpassed CSA-CRVA-RVIA standards covering electrical services, gas services, plumbing services, and vehicular safety.

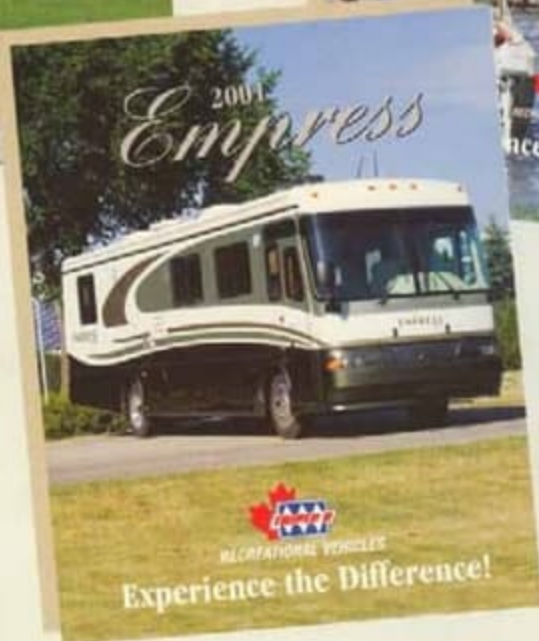
Product improvement is a continuing process at Triple E Recreational Vehicles. Thus we reserve the right to change the specifications on any and all products without prior notice; errors and omissions excepted. Triple E Recreational Vehicles is under no obligation to undertake modification to units manufactured prior to changes in specifications.

Embassy motorhomes exceed 96 inches in width. In some states 96 inches is the maximum width of vehicles travelling some or all state roads. It is the responsibility of the owner to be familiar with the road usage laws of the states in which you travel.

Make sure you visit our website at
www.tripleerv.com



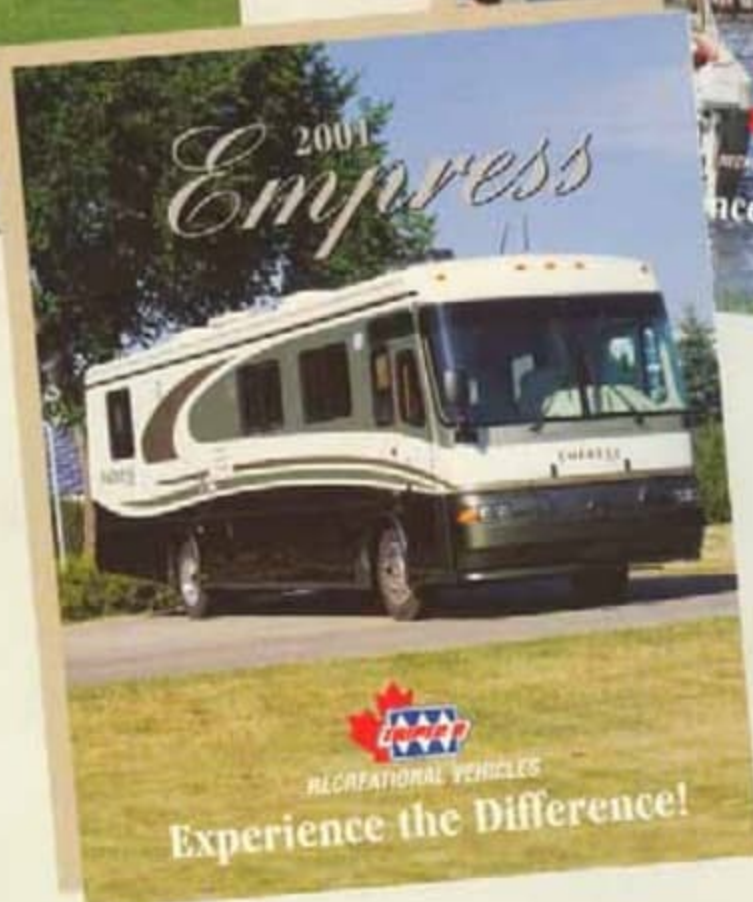
TRIPLE E 2001 Family of Motorhomes



P.O. Box 1230
Winkler Manitoba
Canada
R6W 4C4
Tel: (204) 325-4361
Fax: (204) 325-5341
www.tripleerv.com

Printed in Canada

TRIPLE E 2001 Family of Motorhomes



P.O. Box 1230
Winkler Manitoba
Canada
R6W 4C4
Tel: (204) 325-4361
Fax: (204) 325-5341
www.tripleerv.com

Printed in Canada