

INTRODUCING THE GRAND SPORT





A NEW STANDARD IN LUXURY AND STYLE

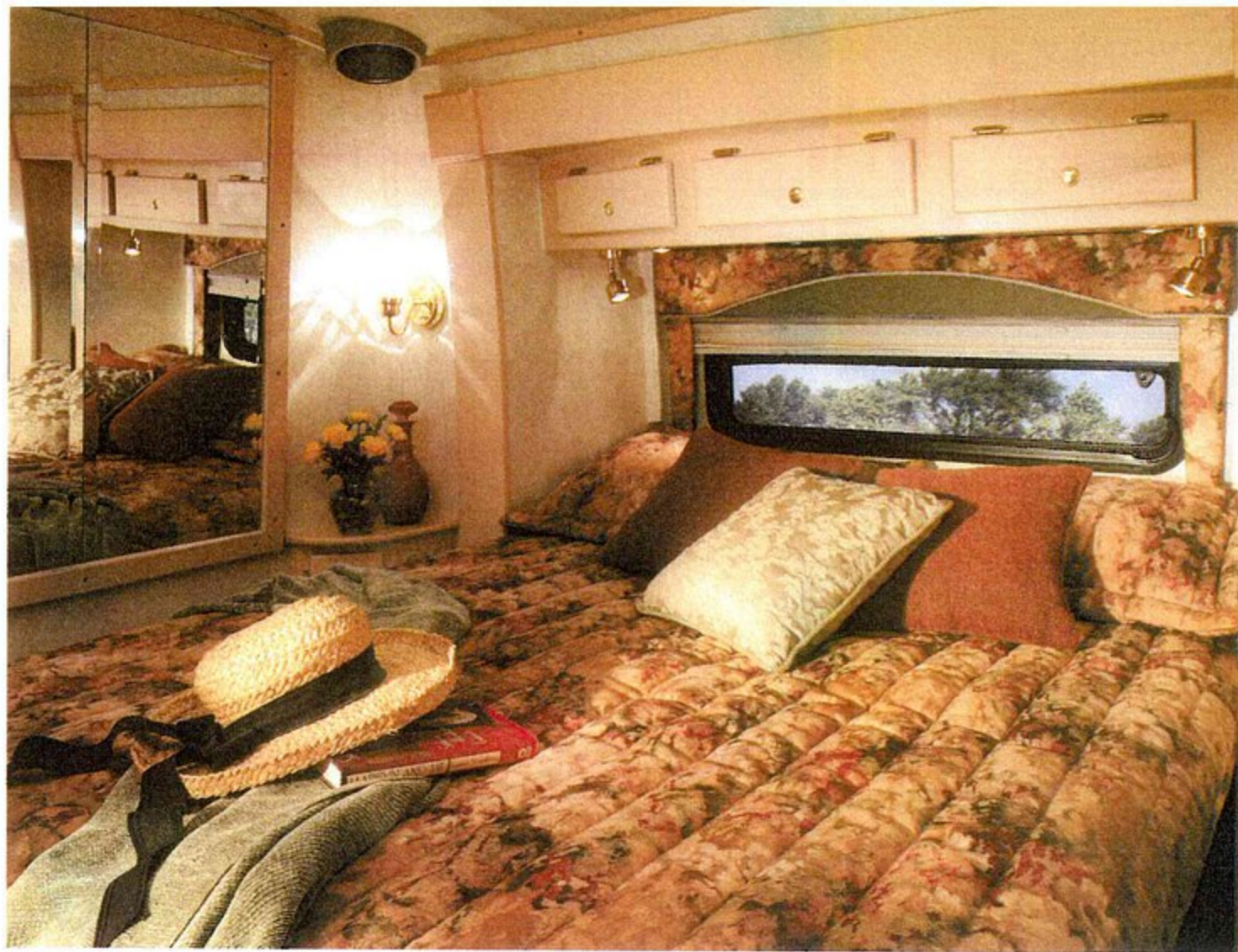
It's time to travel...time to enjoy life. To experience something never seen before...to appreciate innovation that breaks the mold. Take a look at the Grand Sport by Dynamax. It's one of a kind with a look that's out-of-the-box. Packed with curb appeal – it's one sleek ride.

Live in Grand Style. Plush living areas feature spacious double slide-outs with luxurious furnishings including a rocker/recliner with footrest, a standard Queen hide-a-bed sofa and swivel dinette chairs. Add this comfortable option, a front and rear facing dinette to increase sleeping area.

Built to a higher standard, the Grand Sport is loaded with standard features like beautiful aisle lit ceramic flooring, Oak hardwood and a one piece Corian® sink and countertop. Cherry or White Maple hardwood is available as an option.

Conveniently located comfort controls allow easy access to roof vents, temperature and generator controls. The power inverter with digital readout allows you to monitor system efficiency. Monitor your motorhome at a steady temperature while you're away. The optional Auto Gen program is programmable with temperature, low voltage or time sensitivity. With a "real" time clock, it can be set to maximize comfort and energy efficiency for various time zones.

This spacious bathroom with the Sage decor package, features ceramic tile, a vanity Corian® sink/countertop and a Fantastic® roof vent with rain sensor. Travelers will appreciate Grand Sport's skylight/shower combination with increased headroom.



Multiple light sources let you set the mood. Directional overhead reading lamps light the way as you skim through a travel magazine, while watching a favorite show on the 13.3" flip-down TV. Underbed storage with exterior access provides clutter-free living. Sage decor package shown above, Sandcastle decor package shown below, both with optional White Maple cabinetry.



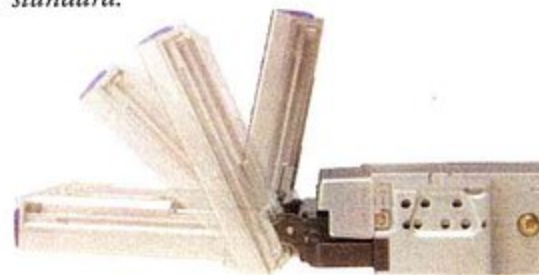
BEHIND THE WHEEL



Drive in Grand Style. The Grand Sport puts comfort back in the driver's seat. *Both* the driver *and* the passenger have the convenience of an entry door with wing windows and a lighted stairway. Leather appointments start at the wrapped steering wheel and continue into the living area. The cab features spacious, leather captain's chairs equipped with adjustable armrests and air ride pedestals. Grand Sport's standard features read like a wish list, starting with the push-button Allison® 6-speed electronic touch automatic transmission, tilt and telescoping steering column, full instrumentation, power windows and door locks, an overhead AM/FM 8-disc CD changer, 6.5" color back-up monitor, plus a rear view mirror with outside temperature and compass.

Designed for enhanced mobility, the Grand Sport has a level walkway from the driver and passenger compartment to the living area. After a turn at the wheel, retire to the living area to enjoy an exceptional home theatre experience with a 22" Panasonic flat screen television and an AM/FM 5-disc DVD player with surround sound. Add an in-motion satellite system for the ultimate selection of programming.

Optional, overhead GPS navigation system combines a full color 6.5" monitor and a back-up camera with 24 radio station sets, a clock and on-screen menu that gives you access to road maps, street directions and even the location of a special shop or restaurant with available CD ROM software. Motorized back-up monitor—standard.

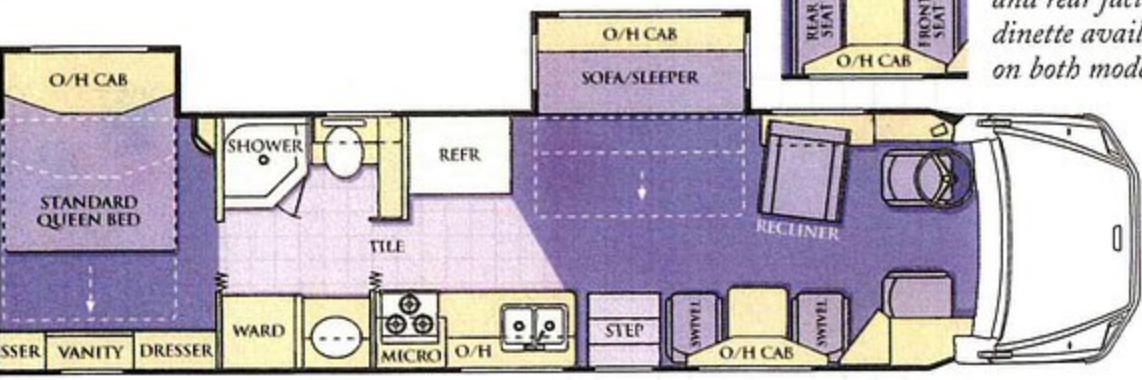




37.5

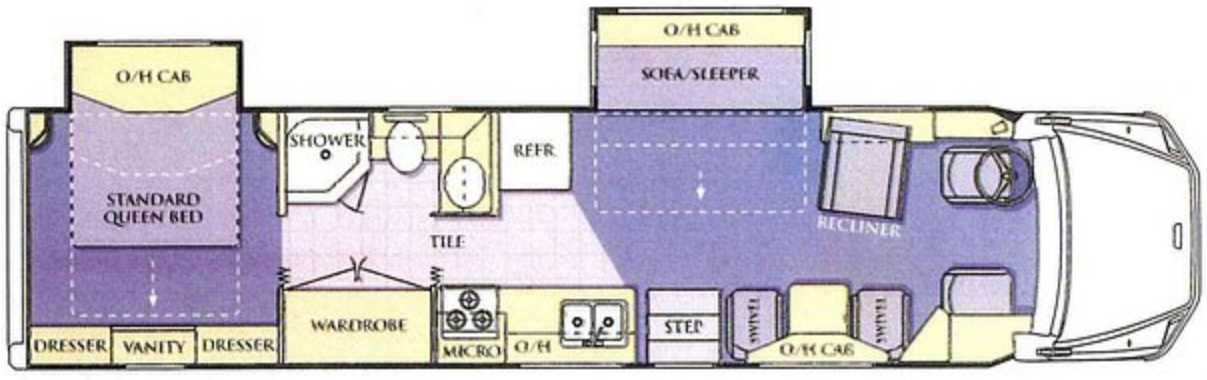
STANDARD & OPTIONAL FEATURES

735 - A



Optional front and rear facing dinette available on both models.

FL735 - B



Standard refrigerator capacity (12 cu. ft.).

Increased bathroom storage with space for an optional washer and dryer. (10 cu. ft. refrigerator standard.)

T O M O T I V E

- Engine
- Caterpillar CFE-300
- 7.2 liter 439.3 Cubic Inch Displacement
- 300 HP @ 2200 R.P.M.
- 800 LB/FT of Torque at 1,440 R.P.M.
- PACBRAKE Exhaust Engine Brake
- 1,000 Watt/115-volt Block Heater
- Transmission
- Allison MD-3060 P Automatic
- MD/HD Transmission Programming
- Six Speed Push Button Electronic Shift Control Dash Mounted
- Freightliner FL70 Conventional Cab Chassis
- Front Suspension
- Meritor 12,000 lb. Front Axle
- Taper leaf 12,000 lb. Front Suspension
- Bilstein Shocks
- Rear Suspension
- Meritor 21,000 lb. Rear Axle
- Axle Ratio 4.88
- Airliner 21,000 lb. Rear Suspension
- Bilstein Shocks
- Power Steering
- Auxiliary Driving Lights
- Cast Aluminum Wheels (6)
- Anti-Lock Braking System (ABS)
- Full Air Brakes
- Tires
- Michelin XZE 275/80 R22.5
- 14-ply Radial Tires
- Four-Point Fully Automatic Leveling Jacks
- Engine Air Conditioning
- Power Driver and Passenger Windows
- Intermittent Wipers

- S Leather Driver and Passenger Air Ride Captain Chairs
- S Panasonic AM-FM-CD-Eight Disc Changer with Color Back Up Monitor
- O GPS Navigation System
- S Stainless Steel Heated and Remote Mirrors on Driver and Passenger Sides
- S Tinted Windows
- S Driver and Passenger Doors with Manual Door Wing Windows
- S Power Door Locks on Driver, Passenger and Entry Doors
- S Battery Disconnects
- S Trailer Hitch 14,000 lb. Capacity
- S Cruise Control
- S Air Horn
- S I.C.C. Light Switch
- S Driver and Passenger Map Lights
- S Auxiliary 12-volt Dash Receptacle
- S Electronic Battery Control Center
- S Tilt and Telescope Steering Wheel
- S Driver and Passenger Sun Visors with Lighted Mirrors
- S Full Front Cab Sound Insulation
- S Full Instrumentation: Speedo, Tach, Oil Pressure, Water Temperature, Transmission Temperature, Fuel, Dual Air Pressure Gauges and Digital Volt Meter
- S (3) 12-volt House Batteries - 100 amps each
- S (2) 12-volt Chassis Batteries - 1,520 CCA
- O Hand Held CB Radio
- S Manual Air Dump Switch
- S Daytime Running Lights
- S V.I.P. 18" Two Spoke Silver Satin Steering Wheel - Leather Wrapped

S T R U C T U R E

- S Steel Structured Floor Framing and Cab Reinforcement
- S Steel Floor Mounted on Rubber Isolators
- S Square-tube Aluminum Framed Sidewalls and Roof
- S Smooth Fiberglass Vacuum Laminated Exterior Sidewall Panels
- S Heated Water and Holding Tanks
- S Welded Aluminum Frame Boxes for All Through-wall Cut Outs

E X T E R I O R

- S Air Service Line
- S Detachable 50 amp Power Cord
- O Power Reel System for Land Line and Fresh Water Hose
- S Full Fiberglass Front Transition & Rear Cap
- S Complete Exterior Finish - Automotive Base Coat/Clear Coat Technology
- S One Piece Radiused Fiberglass Roof
- S Aerodynamically Styled Front Bumper Cover
- S Power Step at Entry Door with Automotive Style Latch and Dead Bolt
- S Exterior Locking Storage Compartments
- O AC/DC Portable Refrigerator/Freezer on Slides
- S Choice of Five Exterior Graphic Colors
- S Crank Out Windows in Coach Area
- S 16' Patio Box Awning
- S Six Window Awnings
- S Front and Rear Mud Flaps
- S Exterior Rinse Hose with Soap Dispenser and Paper Towel Holder
- S Deluxe Entry Door w/Lighted Grab Handle
- S Luggage Compartment Lights

- S Docking Lights (Eight): One Left Side, One Right Side, One Left Rear Corner, One Right Rear Corner, Two Top Rear, One Left & One Right Side of License Plate
- S Digital Satellite System with Automatic Lift
- O Fully Automatic Digital In-motion Satellite Dome
- S Exterior Storage Doors with Pantograph Hinges
- S Screen Door at Entry Door
- S Holding Tanks with Low Point Drains
- S Outdoor Entertainment Center
- S Fresh Water Fill Hose
- S Fresh Water Fill
- S LPG Tank 47.5 Gallons (80% Fill) 38 Gallons

A P P L I A N C E S

- S Panasonic 22" Flat Screen TV & Remote
- S Panasonic AM-FM-5 Disc DVD Player with Surround Sound and Remote
- S Flip down 13.3" Flat screen TV with Remote in Bedroom
- O Wireless Headphones (Bedroom)
- O VCP w/Wireless Headphones (Bedroom)
- O DVD Player w/Wireless Headphones (Bedroom)
- S Onan 7.5 KW Quiet Diesel Generator
- O Automatic Generator Start Control System
- S Dometic 12 Cubic Foot LP/Electric Side by Side Refrigerator (FL735-A)
- S Dometic 10 Cubic Foot LP/Electric Double Door Refrigerator (FL735-B)
- S Deluxe Three Burner Recessed Cook Top
- S Built in Microwave/Conventional Oven
- S 12-volt Water Pump
- S Water Filter System
- S 50 amp 120-volt Service

GVWR:	33,000 lb.
GCWR:	40,000 lb.
Length:	37 ft. 9 in.
Width:	8 ft. 5 in.
Wheelbase:	270 in.
Overall Exterior Height:	11 ft. 6 in.
<i>(includes optional in-motion satellite system)</i>	
Interior Height:	6 ft. 6 in.
Diesel Fuel Capacity:	Dual 45 gallon tanks
Water Capacities:	
Fresh:	80 gallons
Grey:	43 gallons
Black:	43 gallons

Choose the distinctive decor package that reflects your own personal style.

Valance/Bedspreads

Carpet

Captain's Chairs

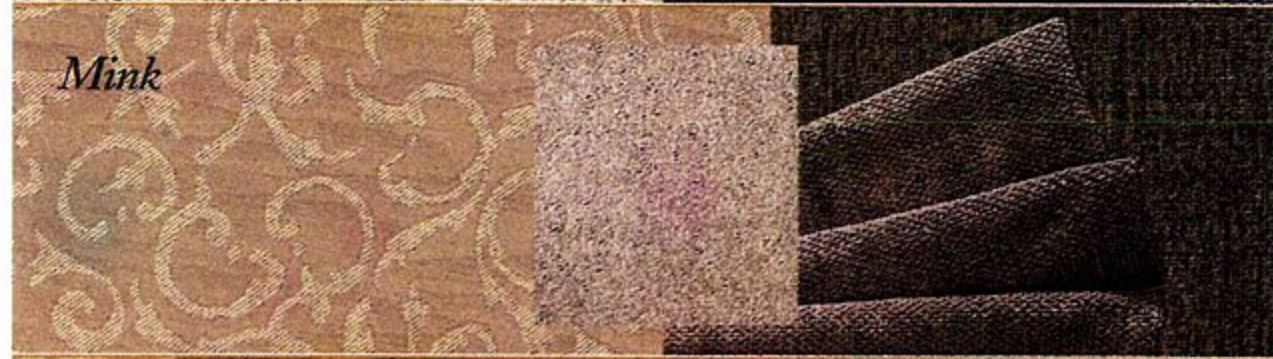
Sofa



Lilac



Midnight Blue



Mink



Sage



Sandcastle

- S 2000 watt Power Inverter
- S Multi Point Water Pump Switching
- S Sealand VacuFlush Porcelain Toilet
- S 10-gallon Water Heater with Direct Spark Ignition LP/120-volt
- S LPG Leak Detector
- S 12-volt Carbon Monoxide Detector
- S Smoke Detector
- S Fire Extinguisher
- S Dual Low Profile Roof A/C - 15,000 BTU (each)
- S 40,000 BTU Furnace
- S Cable TV and Telephone Ready

G A L L E Y

- S Silver Ware Tray
- S Hardwood Dinette Table with Extensions and Two Swivel Chairs
- S Corian® Galley Top and Sink Covers
- S Corian® Large Double Bowl Galley Sink
- S Single Handle Galley Faucet with Pull Out Spray Head
- S Solid Wood Refrigerator Door Inserts
- S Corian® Range Cover
- S 120-volt Outlet and Telephone Jack at Dinette
- S Ceramic Tile Floor

B A T H

- S Sky Light in Shower
- S Brass and Chrome Bath Accessories
- S Corian® Lavatory Sink and Countertops
- S Deluxe Medicine Cabinet
- S One Piece Fiberglass Shower and Surround
- S Ceramic Tile Floor
- S Glass/Brass Finish Shower Enclosure and Door
- O Washer/Dryer Combination (FL735-B)

B E D R O O M

- S Walk Around Island Queen Bed 60" x 74"
- S Electric Bedroom Slide Out
- S Bed Spread, Pillows and Pillow Shams
- S Day/Night Pleated Shades
- S Two Decor Throw Pillows
- S Folding Bath and Bedroom Doors
- S Secondary Phone Jack
- S Hardwood Night Stands

I N T E R I O R

- S Two Fantastic Vent Fans (Kitchen and Living Area) with Temperature Control, Rain Sensors and Wall Controls - Three Speed and Reversible
- S One Fantastic Vent Fan with Rain Sensor and Wall Control - Three Speed (Bath)
- S Entry Step Switch at Entry
- S Two Decorative Sofa Pillows
- S Night Floor Lighting Throughout
- S TV Cable Ready
- S Deluxe Fabric Ceiling
- S Custom Decor (Five Interiors)
- S Deluxe Wall To Wall Carpet in Living and Bedroom Areas
- S 76" Fabric Sleeper Sofa
- O 76" Leather Sleeper Sofa
- S Fabric Recliner
- O Leather Recliner
- S Lambrequin Window Treatments
- S Day/Night Pleated Shades (Living Room and Dinette)
- S Single Digital Thermostat for Heating and Cooling
- S Oak Cabinetry
- O Cherry or White Maple Cabinetry

SPACIOUS LIVING

Travel in Grand Style.

Just because you're on the road doesn't mean you have to pass up a great treasure you find along the way, or leave behind the extras you enjoy. Pack your clubs, skis

or even a bike in four lined, locking external compartments, including one 8' deep pass-through large enough to accommodate fishing gear or a step ladder. Choose this optional outside AC/DC portable refrigerator/freezer for added convenience.

Late night arrival? Eight docking lights make for confident night-time parking at your campsite.



Who says it's what's inside that counts? The head-turning Grand Sport paint graphics feature automotive basecoat/clear coat technology. Integrated, slip-resistant steps provide quick access to driver and passenger doors. A lighted exterior grab handle indicates when the doors are open. Awning and double slide-outs are standard. In-motion satellite system is optional.

At a glance, here's what sets the Grand Sport apart:

- Only Grand Sport has an aerodynamically contoured front end, enhancing driver and passenger safety... loaded with curb appeal.
- Built on a Freightliner FL-70 chassis featuring easy-access driver and passenger doors.
- Entire front end flips forward for easy engine compartment serviceability.
- Powerful 300 HP Caterpillar diesel engine, with 800 ft. lbs. of torque.
- Allison six speed automatic transmission.
- Full 37 ft. 9 in. length.
- Rugged 40,000 lb. GCWR.
- Expandable living space – double slide-outs increase interior width up to 11'.
- A list of features and options that are second to none.

DYNAMAX
CORPORATION

2745 Northland Drive ■ Elkhart, Indiana 46514
P.O. Box 1948 ■ Elkhart, Indiana 46515
Phone: 1-888-295-7859 ■ 1-574-262-3474
Fax: 1-574-262-1099 ■ www.dynamaxcorp.com
©2002



Tour the 135,000 sq. ft. DYNAMAX production facility.

