

The ISATA *Sport* Sedan



Leading A Class Of Its Own



Sink into sumptuous leather swivel chairs and relax with coffee at this fold-down dinette. Reach into the 12 cu. ft. Dometic® refrigerator for a late night snack. Simmer or saute to your heart's content on the three burner range top. This 312SD is shown at right in Sage Green, with optional White Maple cabinetry.

More Choices of Floor Plans and Lengths than others in this Class

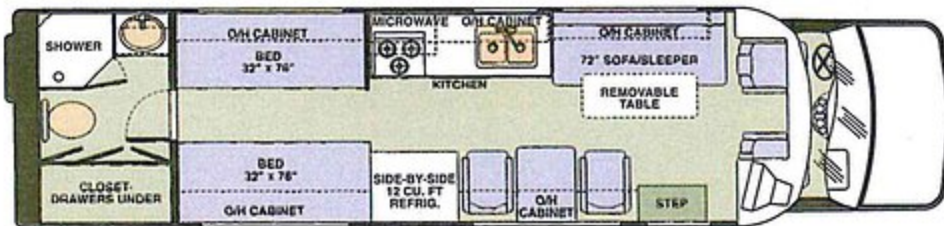
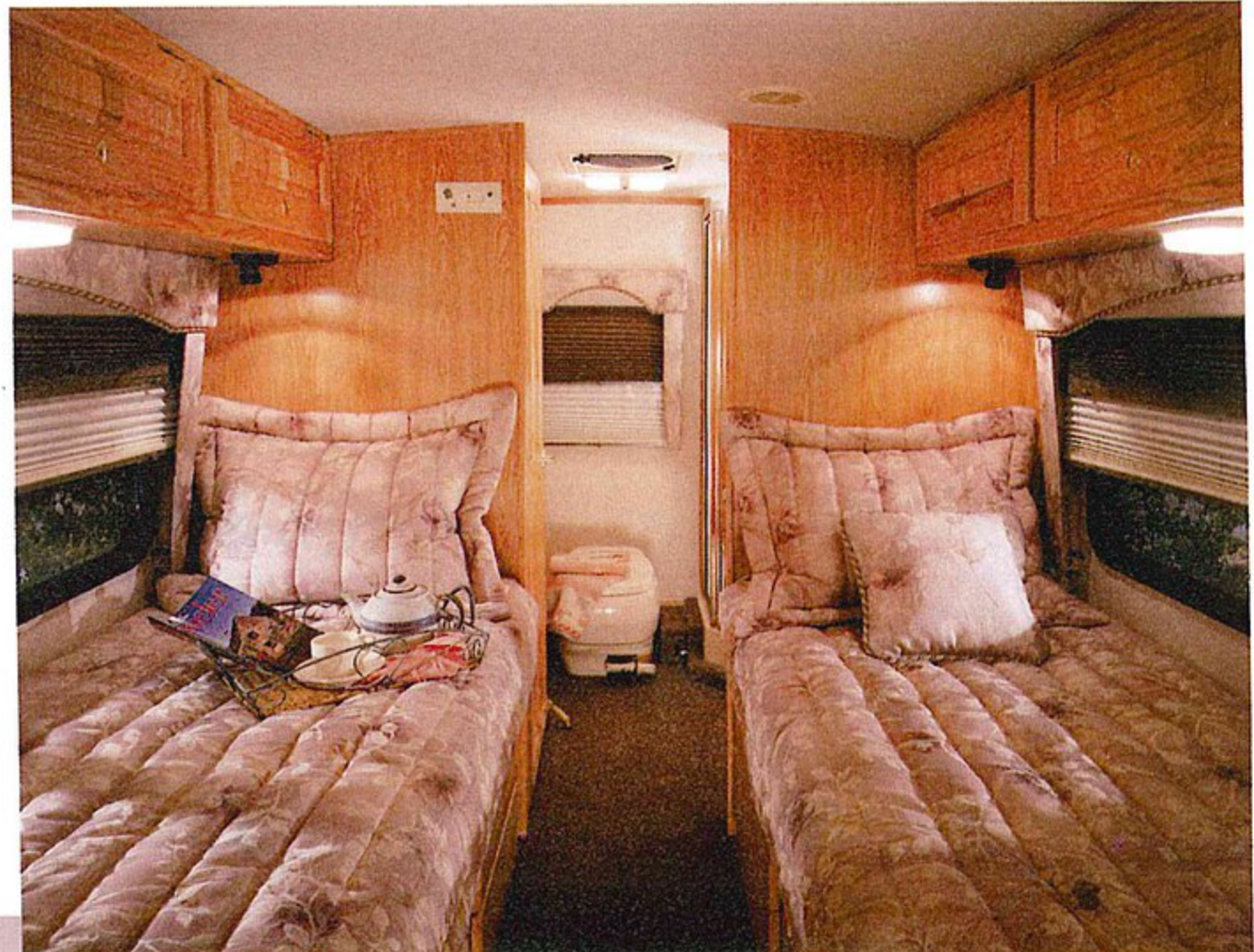
This 312SD is shown at left, loaded with exterior options including: Sage Green Ribbon paint, aluminum wheels, window and shade awnings. Enjoy your favorite show wherever you go with an optional KVH in-motion satellite system.

Ample overhead and underbed storage keeps this twin bed sleeping area clutter free. Lilac decor package shown below with optional Oak.



Get organized and keep your living space tidy. Closet doors feature mirrored panels and is shown in optional Oak.

Dynamax is offering a new generation of travelers more options with a full line of smaller, more maneuverable recreational vehicles. ISATA Sport Sedan leads a class of its own with a unique combination of technology, craftsmanship and style. The ISATA Sport Sedan offers a selection of floor plans, lengths and luxury appointments that are second to none.



Model 312SD (Ford only): Large Rear Bath, Twin Beds, Side Dinette
 Water Tank Capacities (gallons): Black: 26 • Gray: 26 • Fresh: 30



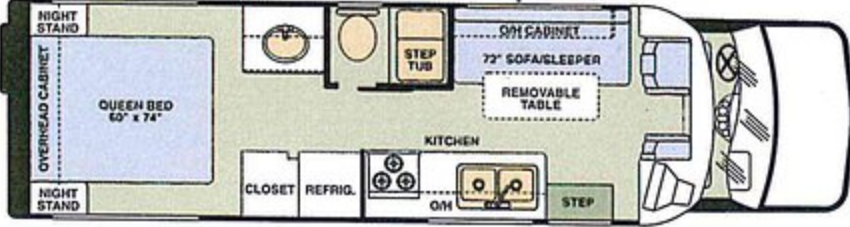


This clean and brightly lit living space shines with the Lilac interior package and standard White Laminate cabinetry, shown at left. Corian® countertop, optional.

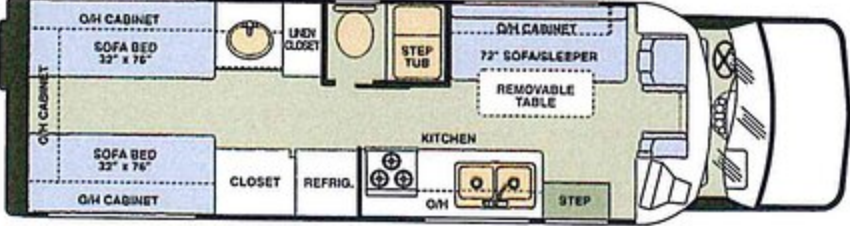
Experience the *ultimate* level of **Luxury** and **Quality**



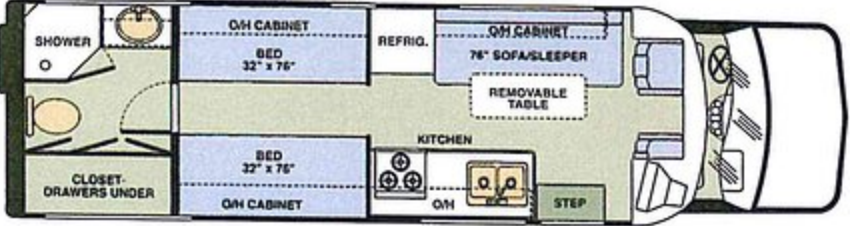
Imagine parking your ISATA along side a wooded stream, then settling down in the warmth of this rich cherry kitchen to enjoy a gourmet meal you've prepared yourself. Spacious living areas surround you with sizable countertops, storage and cabinetry, combined with premium name-brand appliances. You truly can take it with you... wherever you go.



Model 290: Rear Bedroom, Queen Walk-around Bed, Side Dinette Optional
Water Tank Capacities (gallons): Black: 32 • Gray: 26 • Fresh: 31



Model 292: Rear Bedroom, Twin Beds
Water Tank Capacities (gallons): Black: 32 • Gray: 26 • Fresh: 31

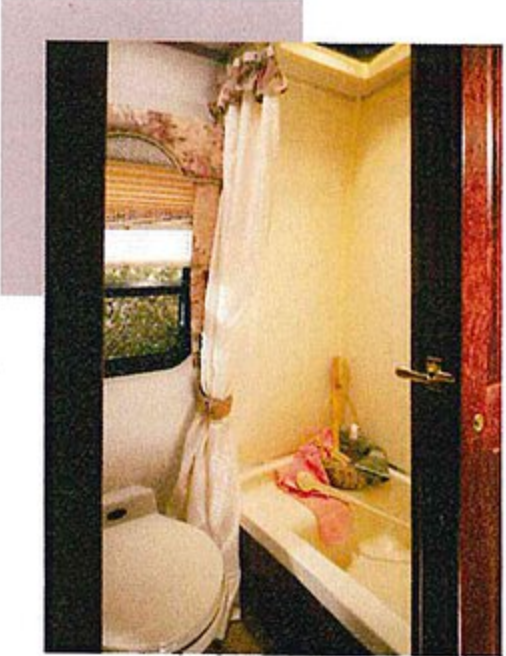
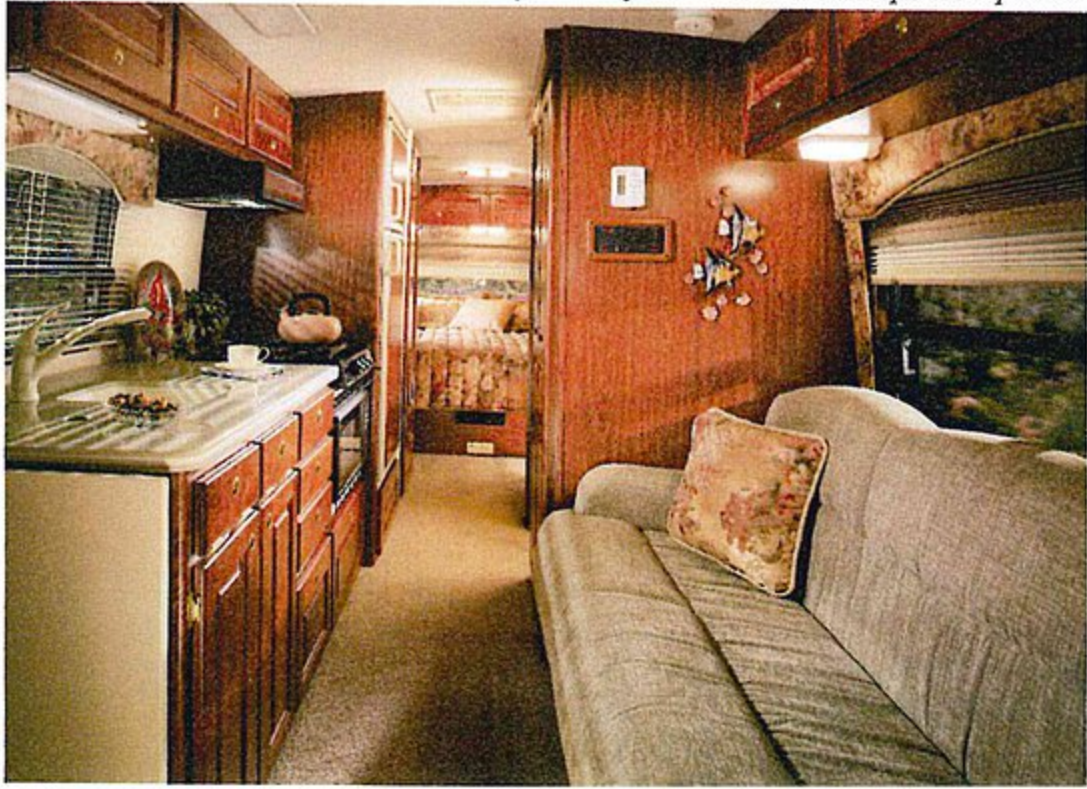


Model 292RB: Large Rear Bath, Twin Beds
Water Tank Capacities (gallons): Black: 26 • Gray: 26 • Fresh: 30



The spacious bedroom in Model 290 has a walk-around queen bed, large windows, standard day-night shades, twin night stands, and generous underbed storage. Shown above with optional Cherry cabinetry and Corian® counters.

Invite friends or family to come along. Removable armrests on this fold-out sofa sleeper extend sleeping area, shown below. Travel in style with rich, spacious Cherry cabinetry and Corian® countertops, both optional.



Side bath shown in optional Cherry with Sage Green interior package.

Travel with consistent comfort in this 272RB, shown at right with a 15,000 BTU ducted roof air conditioner, Lilac ribbon paint and aluminum wheels, all optional.



Enjoy a morning stretch in this sunny stand up shower with a domed skylight. 272RB is shown above in Lilac with optional Oak cabinets.

Enjoy more Driving room... Living space... Fuel economy

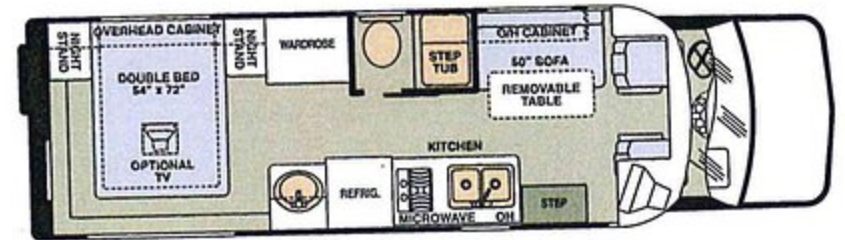
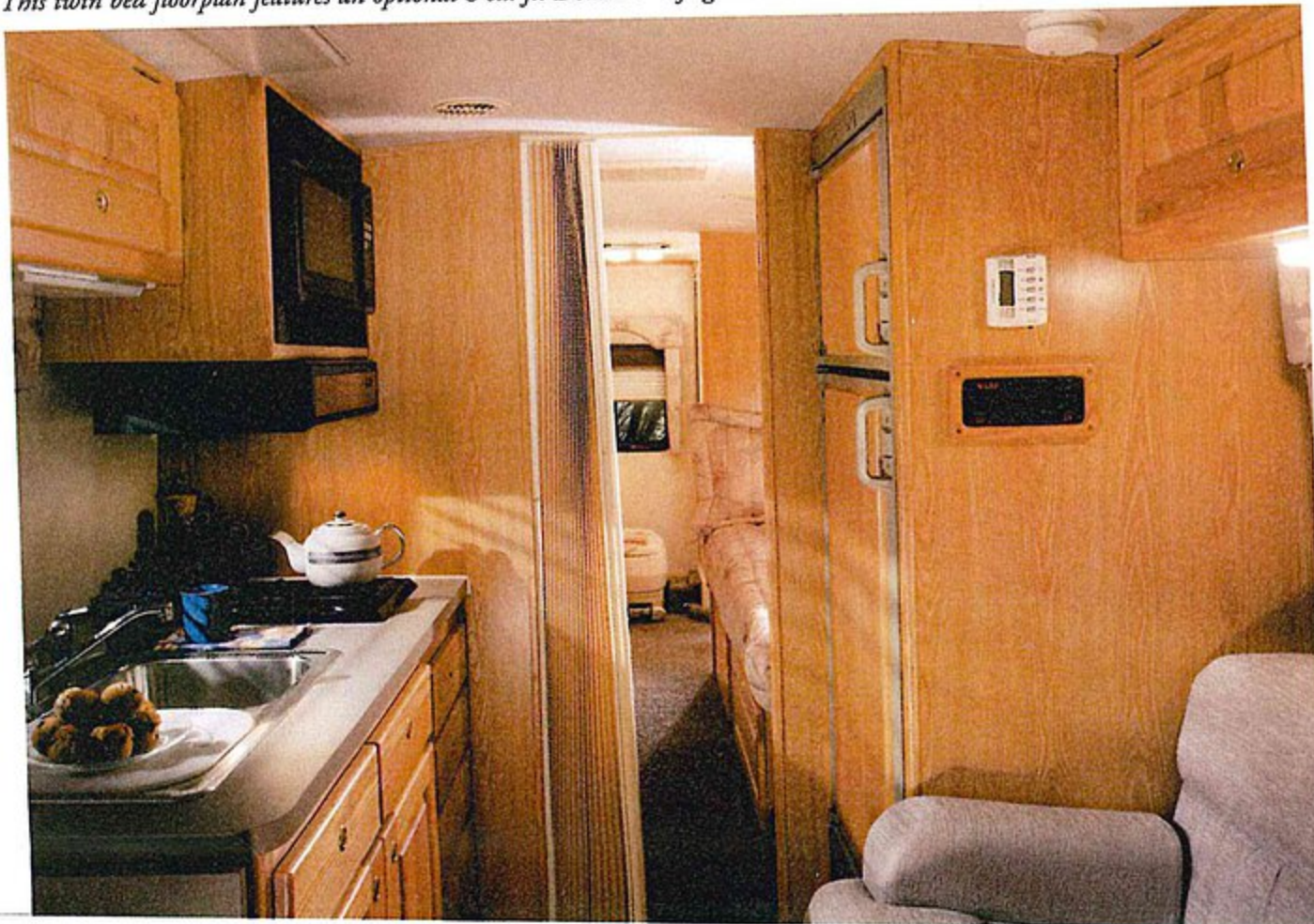
Whether you drive six miles, or 6,000, the ISATA Sport Sedan's living area is comfortably crafted with the highest level of amenities and furnishings available. Tasteful interior choices, premium cabinetry, walk-around sleeping arrangements, dinette options and the latest in electronics technology combine to create a comfortable and luxurious traveling experience.



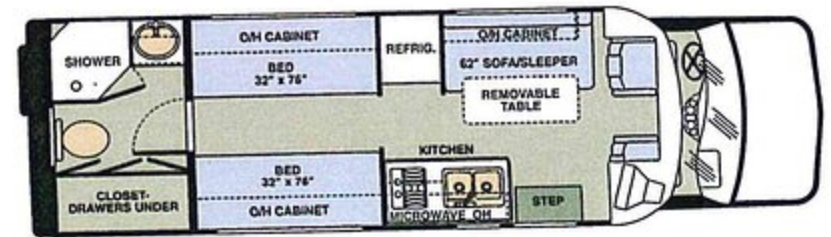
Windows feature tinted energy-saving "E-glass," and awning-style opening sections with screens. Window positions and sizes vary with floorplans.



This twin bed floorplan features an optional 8 cu. ft. Dometic® refrigerator. Shown below in Lilac with optional Oak cabinets.



Model 270: Rear Bedroom, Double Walk-around Bed
Water Tank Capacities (gallons): Black: 32 • Gray: 26 • Fresh: 31



Model 272RB: Rear Bathroom, Twin Beds
Water Tank Capacities (gallons): Black: 26 • Gray: 26 • Fresh: 30

There is plenty of room to enjoy your own comfort zone in this walk-around double bed (at right) featuring underbed storage and a vanity sink. Shown in Sage Green and option





10 Exterior in Sage Green with optional aluminum wheels and awning. Shown at left.

It's the *Perfect Blend* of **Luxury, Size and Mobility**

The ISATA provides a driving experience unlike that of any other motorhome. Zip easily into parking spaces. Pull up to the drive-thru like a breeze and pull up to the pump without breaking the bank. You'll want to drive it everywhere you go, even if it's just across town.



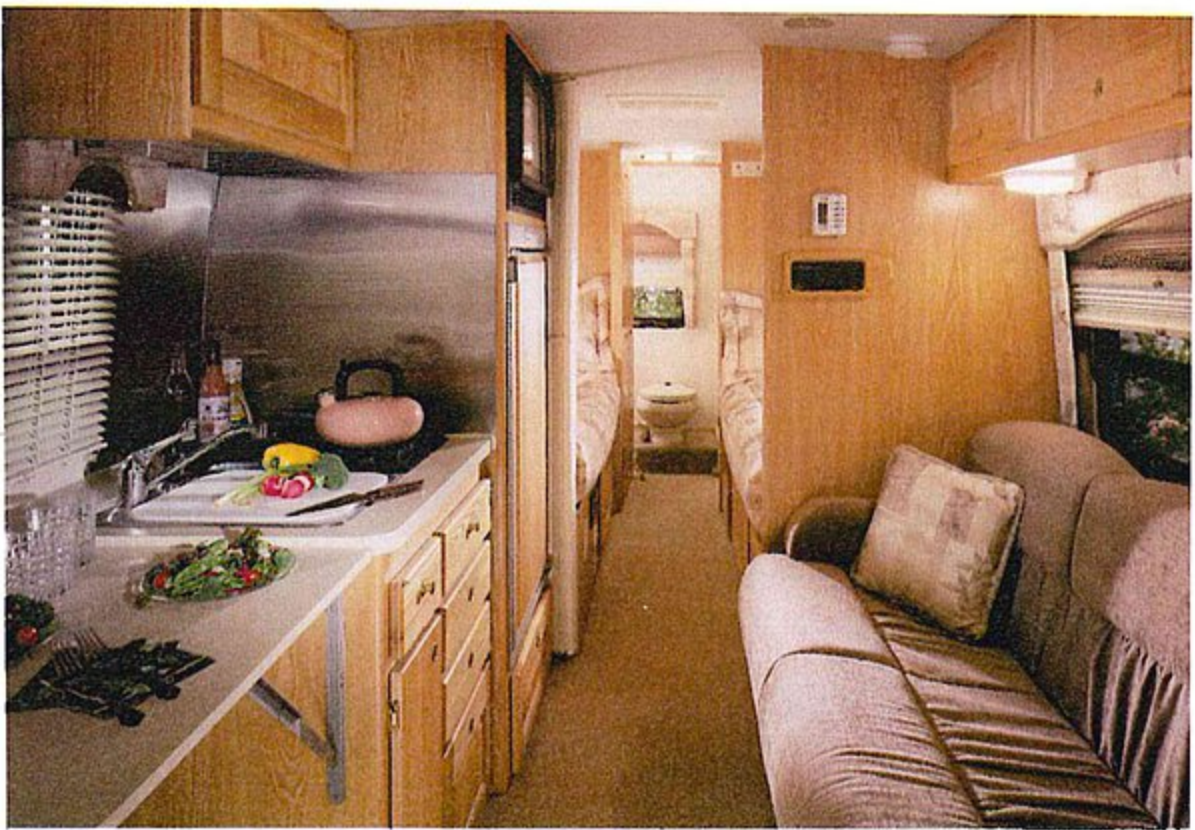
Vanity shown in optional Oak.

The living experience is comfy, with plenty of room for you inside, and plenty of maneuvering space for the ISATA outside.

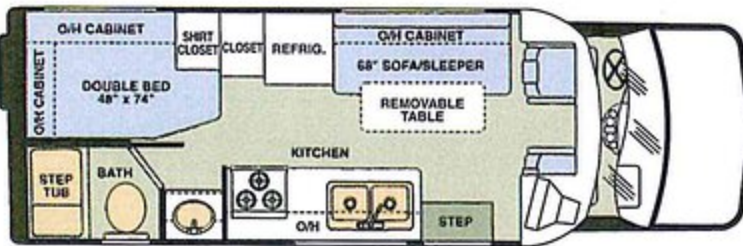
But don't take our word for it. Drive it once around the block and you'll feel right at home.



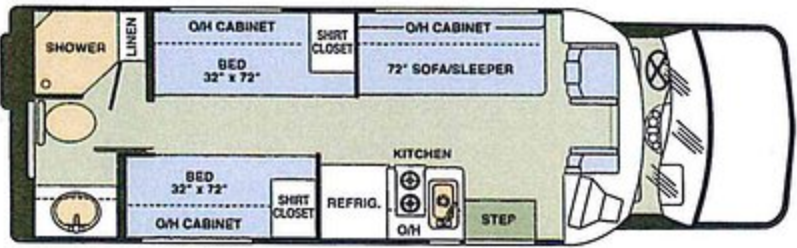
Careful planning makes the most of available storage space for closets and wardrobes. Space varies by floorplan.



This inviting 252RB features a Sandcastle interior package, and is shown with optional Oak cabinetry.



Model 240: Rear Bedroom, Corner Double Bed
Water Tank Capacities (gallons): Black: 26 • Gray: 26 • Fresh: 31



Model 252RB: Rear Bathroom, Twin Beds
Water Tank Capacities (gallons): Black: 26 • Gray: 26 • Fresh: 30

Living area features Mink interior package, shown at right with optional Oak cabinetry.



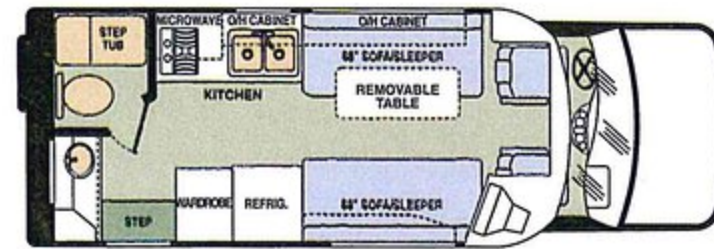


This 220 in Sage Green, shown at left, features ribbon paint, awning and aluminum alloy wheels, all optional.

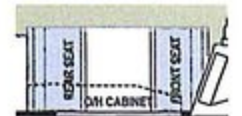
ISATA is the Right motorhome for a future full of Adventure

The right motorhome fits wherever you go. This easy-to-drive ISATA will take you across country, or across town to pick up the kids with equal ease. With gas mileage comparable to many popular sport utility vehicles, the easy to park ISATA makes a great second vehicle for families on the go. Its the best of both worlds!

You can enjoy vacation travel efficiently without sacrifices. Park just about anywhere and sleep in relaxing accommodations. Enjoy home cooked meals, great entertainment features, plus plenty of room for family and friends.



Model 220SD:
Optional passenger
side dinette



Model 220: Rear Bathroom, Twin Beds

Water Tank Capacities (gallons): Black: 25 • Gray: 26 • Fresh: 27

This Midnight Blue 220SD with White Laminate cabinetry features a storage friendly folding side dinette.



Enjoy built-in versatility with these twin sofasleepers, shown above and at right in Sage Green and optional White Maple.





*Easy to drive...
built to travel...*

Take the ISATA Sport Sedan to the next home coming game or family picnic. Head out to that spot on the lake where the bass are bitin'. Take the "fall foliage tour" when color is at its peak and hotels are packed. Escape anytime, anywhere in a vehicle that makes both the driving and the living fun, easy, convenient and comfortable.

The ISATA features an aluminum cage substructure and a one-piece fiberglass roof. This structurally superior, lightweight aluminum frame construction aids in fuel economy. The subtly curved contours and laminated fiberglass radius sidewalls provide strength while enhancing aerodynamics.

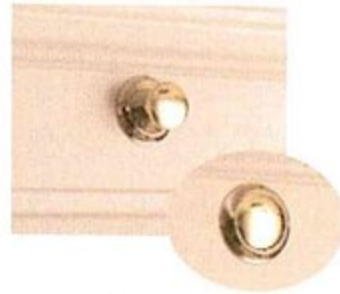


Convenient hidden step is concealed when door is closed, maintaining aerodynamic body styling.

Fabric & decor choices

Isata style...as sophisticated and distinctive as it is comfortable and relaxing. Tasteful textures, colors and appointments. Combinations that set the Isata Sport Sedan apart.

Our design staff has created a selection of contemporary decor packages that will reflect your own personal sense of luxury.



Standard Posi-lock cabinet latches provide three advantages: a positive locking mechanism, no protruding handles to snag or injure occupants and an easy visual check to ensure every cabinet is secure.

Valances / Bedspreads

Carpet

Captain's Chairs

Sofa



Standard Features:

Exterior Features & Construction:

- Radiused aerodynamic fiberglass laminated sidewalls and ceiling
- Molded fiberglass rear body cap
- R-7 insulation in sidewalls
- R-8 insulation in ceiling
- R-10.8 insulation in floor
- Square-tube aluminum framed sidewalls
- Heavy gauge square tube steel floor trusses
- One piece seamless molded fiberglass subfloor
- Seamless fiberglass textured roof, with 4" overlap on sides and caps
- Outside lockable storage compartments with sealed seamless molded fiberglass-liner and steel reinforcing straps
- Sewer hose storage compartment with locking door
- Locking doors for fuel and fresh water fill
- Welded aluminum frame boxes for all through-wall cutouts
- Stainless steel wheel simulators
- Steel-framed curbside entry door
- Automatic electric entry step
- Lighted entry grab handle
- Premium quality heavy duty screen door
- Tire valve extensions for rear wheels
- Two level front bumper step
- Exterior base coat/clear coat, 3-color custom paint and graphics
- Rear mud flaps
- 30 ft. land line for 110 volt 30 amp external power
- City water and gravity fill hook-ups
- Exterior porch and service lights
- Custom molded front bumper ground effects with running lights

- Sleek fiberglass cover for full-size spare tire
- Hydraulic jack, spare tire and lug wrench

Driving Compartment Features:

- Steel safety cage surrounding transition from cab to coach
- 6-way power driver and passenger captains chairs
- Premium fabric upholstery for captains chairs (leather optional)
- Power steering
- Power brakes
- Tilt steering column
- Power remote and heated mirrors
- Rear view mirror with outside temperature and compass
- Power windows
- Cruise control
- Dash air conditioning
- Dash instrumentation: Engine temperature, fuel level, odometer, trip odometer, speedometer, oil pressure, voltmeter
- Driver and passenger overhead directional reading lamps
- Storage space over driver's seat
- Tinted glass in windshield, side and rear windows
- Intermittent windshield wipers
- Power door locks (driver, passenger and entry door)
- Factory in-dash AM/FM/CD stereo

Living Space Features:

- 19" remote controlled Audiovox color TV
- Video cassette player
- Cable TV and phone hook-up
- Automotive door latch and deadbolt lock on entry door
- Premium quality stain resistant nylon carpet on thick 2 lb. pad

- Low-level aisle lighting with convenience switch at entry door
- Crank-out awning style windows with screens (no sliders)
- Designer fabric window valances
- Mini blinds over kitchen window
- Soft pleated day/night shades on other windows
- Snap-in privacy drape for windshield
- Winegard roof-mounted antenna with manual crank, 360 degree swivel and 12V signal booster
- Double stainless steel sink (252RB is single)
- Chrome Delta single handle faucet
- Sprayer in kitchen sink
- Sink cover to provide additional counter work space in kitchen
- 6.0 cubic foot Dometic "Royal Series" dual power two-door refrigerator/freezer (5.0 cu.ft. single-door on 252RB)
- Three burner LP gas range in black enamel (2 burner on 252RB)
- Lighted power hood over range
- Convection/microwave oven
- Large flip-up countertop extension, to use as a desk, kitchen counter or added dining area
- Sofa unfolds to a bed
- Seat belts for passengers on sofa
- Pedestal-mounted dining table; stores in custom-fitted space under sofa
- Soft touch fabric ceiling
- Recessed double-bulb fluorescent ceiling lights over dining and kitchen area
- Recessed double bulb fluorescent light over kitchen sink
- Numerous 12V incandescent lights
- Strategically placed 110V outlets
- Posi-Lock cabinet latches - provide three advantages: Positive latching mechanism, no protrusion to snag or injure occupants, and quick, easy visual check to assure every cabinet is secure

- Vinyl clad raised-panel cabinetry in easy-care frost white (cherry, oak, white maple optional)
- 6 1/2" thick inner spring mattress(es)
- Two individually switched pivoting reading lights in bedroom
- Under-bed storage
- Designer bedspread and pillow shams
- Vanity-style porcelain basin with Delta chrome single lever faucet
- Porcelain toilet in bath
- Step tub with shower surround, shower curtain, wand-style shower head (available 220, 240, 260, 290 and 292)
- Shower enclosure with glass doors (252RB, 272RB, 292RB and 312SD)
- Skydome in shower (all models)
- Mirrors over vanity and in bath door or closet door
- Water pump switch in bath
- Emergency exit window in rear of vehicle

Comfort Control, Environmental Systems:

- 30,000 BTU Suburban LP gas furnace with ducted discharge
- Low profile Duo-Therm roof mount 13,500 BTU air conditioner with ceiling ducts and vents
- Welded aluminum air conditioning ducts
- Air conditioning vents with controls to redirect air flow and volume
- Three Fantastic roof vents: two reversible, one exhaust (260, 290, 292)
- Two Fantastic roof vents: one reversible, one exhaust (220, 240, 252RB, 272RB, 292RB, 312SD)
- Comfort control center with thermostat and switching for heating and air conditioning
- Full function monitor panel - monitors levels of fresh, grey, black water; battery status, LP level; includes switches for water heater, water pump, holding tank heaters and exterior light

Optional 5.5 kW Generac or 4.0 kW Onan generator produces steady, quiet, dependable 110v AC power for appliances, lights and other systems. Inside and outside start switches; sound insulated compartment.



Gleaming stainless steel wheel simulators are standard. Aluminum wheels (shown here) optional.



Standard steel step extends or retracts automatically whenever side door is opened or closed, providing easy access in or out.



Luxurious, roomy Model 290 bath shown in optional cherry. Overhead exhaust fan, porcelain toilet, and separate step-tub/shower are all standard.

This optional 13.3" flat panel display TV monitor with built-in tuner flips up and away when not in use.



Options:

- Audiovox back up camera
- GPS navigation system
- Audiovox video cassette player
In bedroom
- Heat strip for air conditioning system
- HWH electro-hydraulic leveling system
- Cobra CB radio
- Leather captain chairs and sofa
- Dinette with removable table
- 15,000 BTU roof-mounted Dometic® air conditioning
- 12', 13', 15' or 16' A & E box awning
- Individual awning for any window
- GM 6.5 liter V-8 diesel engine
(395 CID, 195 HP, 430 ft./lbs. of torque @ 1800 rpm)
- Ford 7.3 liter V-8 Power Stroke Turbo Diesel engine with 5 yr/100,000 mile engine warranty
(444 CID, 215 HP, 425 ft./lbs. of torque @ 1800 rpm)
- Aluminum alloy wheels
- Outdoor shower
- Outdoor entertainment system
- Raised panel solid cherry cabinet fronts and doors
- Raised panel solid oak cabinet fronts and doors
- Raised panel solid white maple cabinet fronts and doors
- Privacy curtain between bedroom and living room
- 8 cubic foot Dometic® double door refrigerator/freezer
Not available on 252RB
- 8 cubic foot Dometic® double door refrigerator/freezer w/ice maker
Not available on 252RB
- 13" FlexVision flat panel display TV/monitor in bedroom
- 6 disc CD changer
- DSS satellite TV dish
- Heart Interface power inverter
- Tow hitch (Class III) with wire harness
- 5.5kW Generac or 4.0kW Onan generator
- Other options are available
Contact your ISATA dealer for more information.



Standard convection-microwave oven makes short work of meal preparation. LP gas range cooks like a dream. Note: Easy-care vinyl clad white cabinets are standard.



Standard compass mirror shows directions and external temperature.

- Front coil springs, rear leaf springs
- Independently adjustable Firestone Ride Rite air bags on drive axle
- Bilstein shock absorbers front and rear
- 4.10 rear axle ratio
- 4.63 rear axle ratio (Ford E-450 only)
- Two bumper-mounted projector-style driving lights
- Battery control center to control and manage charging of batteries
- Heavy duty chassis/starting battery
- Dual auxiliary house batteries
- 130 amp alternator
- 3 year/36,000 mile chassis warranty
- Driver and front passenger air bags (Ford)
- Engine block heater

Warranty:

- Conversion is warranted for 1 (one) year or 15,000 miles. Warranty service is available nationwide. Chassis, powertrain and automotive options are warranted by the chassis manufacturer (Ford or Chevrolet). Installed appliances and fixtures are warranted by their respective manufacturer.

- 6 gallon Suburban LP gas water heater with direct spark ignition
- Water heater bypass valves
- Carbon monoxide, smoke and LP detectors
- Inside battery cutoff switch for coach
- Quiet, 55 amp 110V to 12V power converter
- GFI reset circuit
- Heated holding tanks (black and grey)
- 68 lb. LP gas tank
- Fire extinguisher at entry door

Chassis Features:

- Ford 6.8L Triton V-10 engine (415 CID, 305 HP, 420 ft./lbs. of torque @ 3250 rpm)
- Chevy 8.1L V-8 engine (502 CID, 340 HP, 455 ft./lbs. of torque @ 3200 rpm)
- Dual rear drive wheels
- LT225/75R x 16D tires with full size spare (Ford E-450 chassis tires have 'E' rating)
- 55 gallon fuel tank
- 4-speed automatic overdrive transmission
- 4-wheel ABS brakes: power front disc, rear disc (Ford)
- Front stabilizer bar
- 1.125" rear stabilizer bar (Ford E-450 only)

Key Dimensions

- Overall length:
220: 22 ft.
240: 24 ft. 2 in.
252RB: 25 ft. 2 in.
270 & 272RB: 27 ft. 6 in.
290, 292 & 292RB: 29 ft. 2 in.
312SD: 31 ft. 9 in.
- Interior headroom:
6 ft. 3 in. throughout
- Exterior height:
9 ft. 10 in. (w/standard air)
- Exterior width:
7 ft. 6 in. (excludes mirrors)

Chassis Specifications:

	Chevrolet	220	240	252RB	270	272RB
GVWR	12,300	12,300	12,300	12,300	12,300	12,300
GCWR	17,000	17,000	17,000	17,000	17,000	17,000
Wheelbase	159"	159"	171"	180"	180"	180"
	Ford	220	240	252RB	270	272RB
GVWR	11,500	11,500	11,500	14,050	14,050	14,050
GCWR	20,000	20,000	20,000	20,000	20,000	20,000
Wheelbase	158"	158"	170"	179"	179"	179"
	Ford	290	292	292RB	312SD	
GVWR	14,050	14,050	14,050	14,050	14,050	
GCWR	20,000	20,000	20,000	20,000	20,000	
Wheelbase	200"	200"	200"	220"		



Optional outdoor entertainment center has AM/FM/cassette stereo with phone jack, 110v outlet, and weatherproof locking cover.



(Size and location of storage areas vary by model)

Sealed, carpet-lined, molded fiberglass outside storage areas, all with assisted-lift locking doors.

The ISATA Sport Sedan is easy to Drive, Maneuver, and Park...with all the Comforts of home.



Floor plans, features and specifications of the ISATA are subject to change without notice.

DYNAMAX
CORPORATION

53103 Northland Drive • Elkhart, Indiana 46514
P.O. Box 1948 • Elkhart, Indiana 46515
Phone: 1-888-295-7859 • 1-219-262-3474
Fax: 1-219-262-1099
www.dynamaxcorp.com
©2001

Test drive one today.

The ISATA Sport Sedan...a new way of thinking about travel. It's agile and aerodynamic. It's good looking – sleeker and more elegant than you would expect a Class C motorhome to be. It turns heads and corners with equal ease.

The best part of owning an ISATA is that with so many lengths, floorplans and options, you'll have what you need – and even some extras. DYNAMAX gives you plenty of choices, with floor plans from 22' to 31' in length, and a flexible range of standard features and options that are second to none.

Cruise across town, or across the continent. The ISATA Sport Sedan is at home anywhere.

Model 220 shown at left in Sage Green with ribbon paint, aluminum wheels and awning, all optional.

Tour the 135,000 square foot DYNAMAX production facility, in Elkhart, IN.

