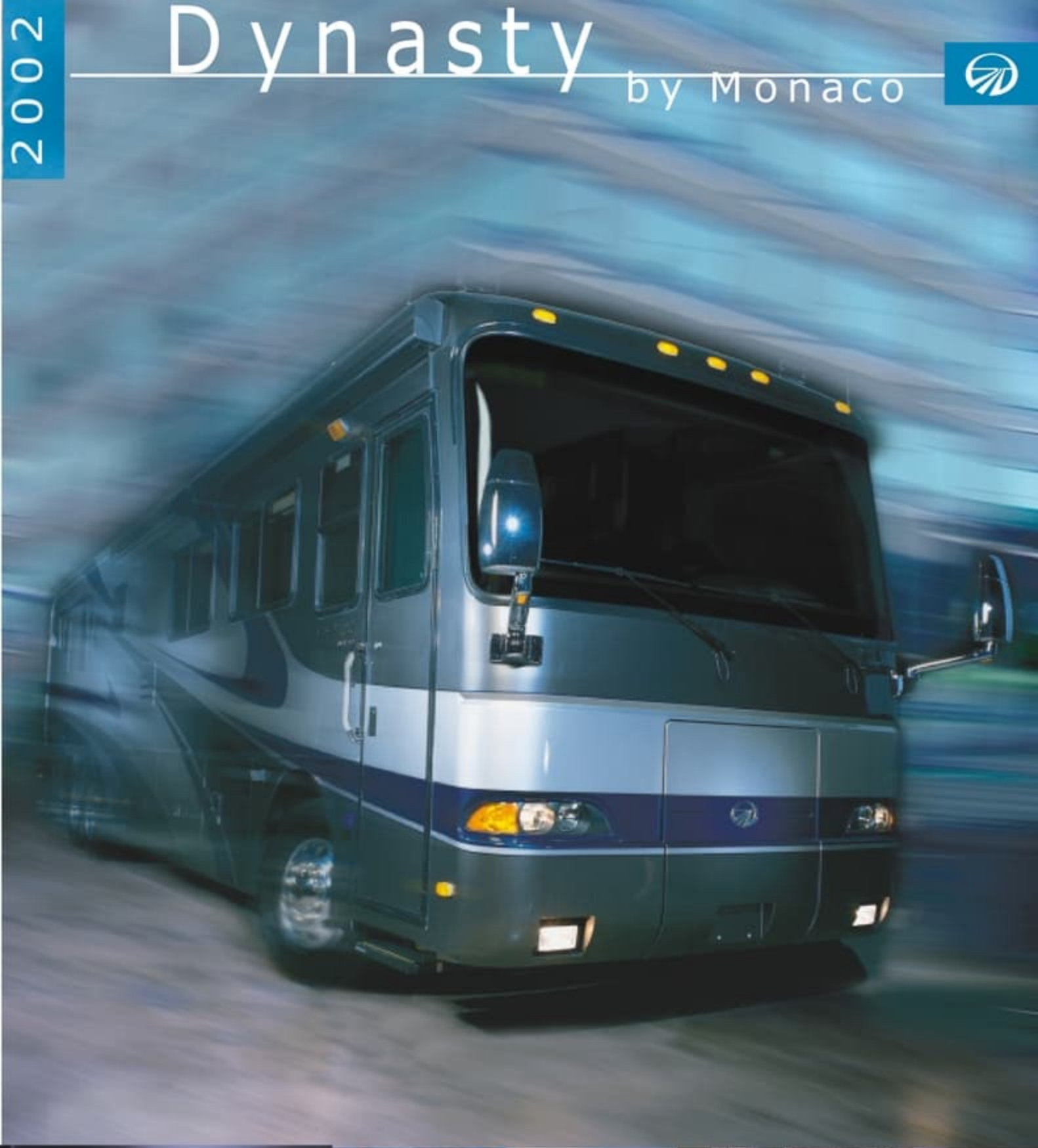


2002

# Dynasty

by Monaco



 **Dynasty**  
MONACO

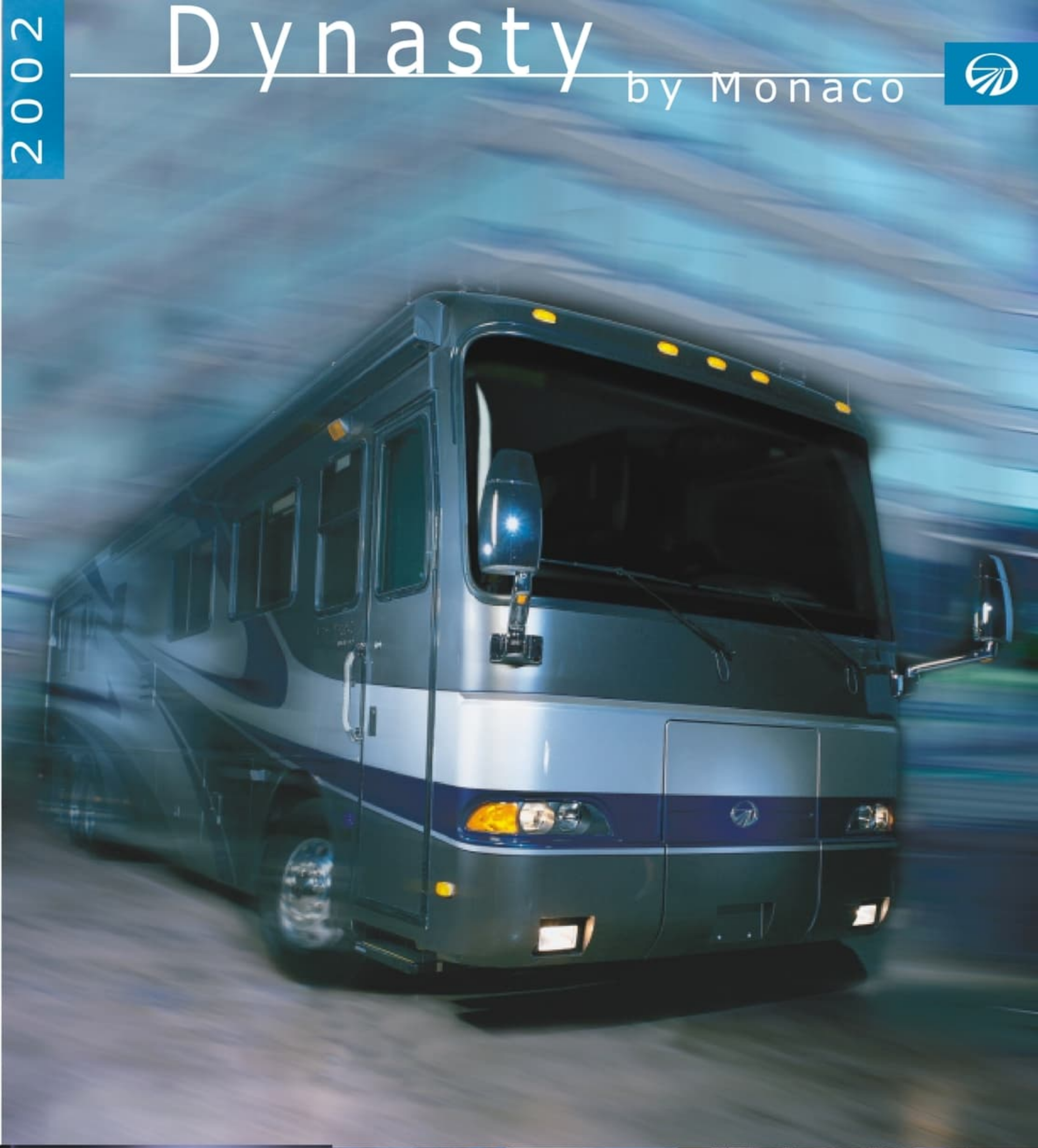




2002

# Dynasty

by Monaco



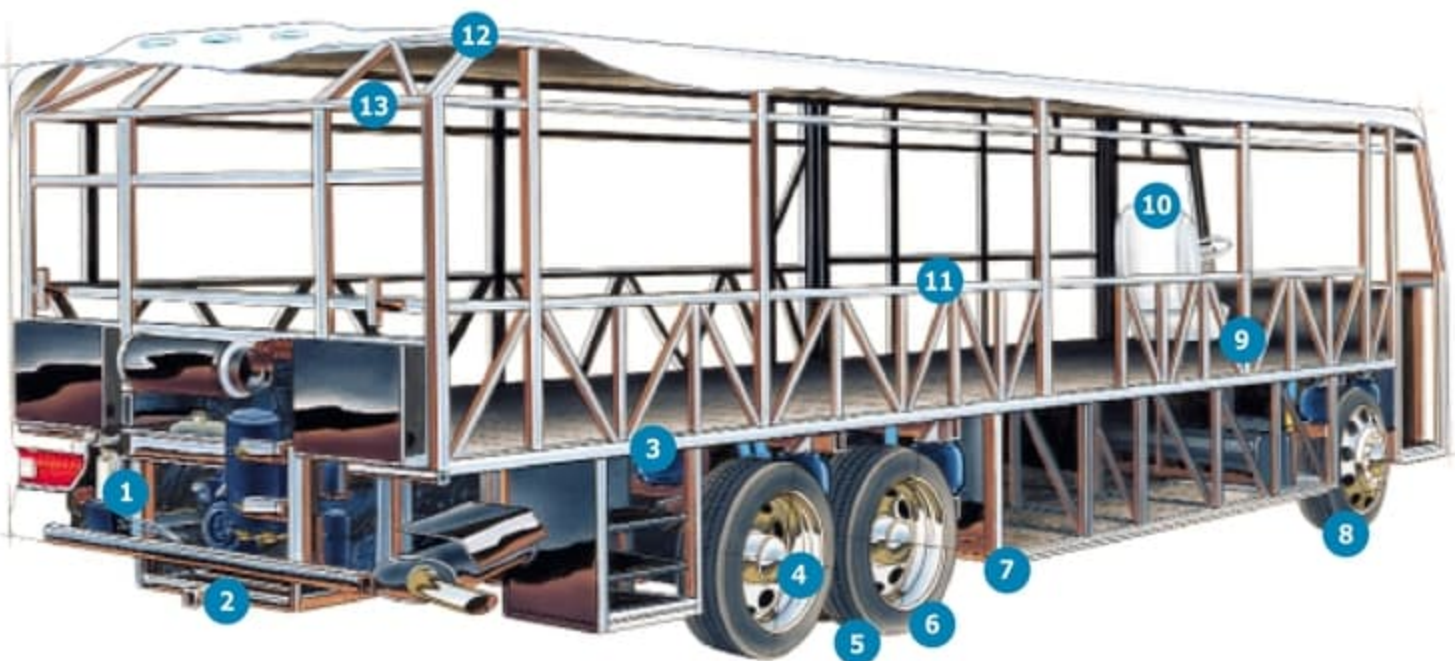
 **Dynasty**  
MONACO





# Put your hands on the metal

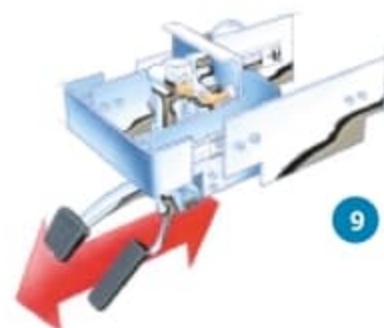
feel the Monaco quality construction



## Roadmaster RM8H/RM10H features:

1. Cummins® turbo diesel engine gives you power, efficiency and low maintenance.
2. 10,000 lb. hitch receiver lends powerful towing capacity.
3. Cushion air glide suspension system positions eight/ten shocks and eight/ten airbags outboard with auto-leveling for greater stability and a smoother ride.
4. Unique six-degree rear axle tilt perfectly aligns the engine, transmission and differential, minimizing stress on the drive-train and noise delivered to the coach.
5. Dual air brake system assures stopping power on steep grades. Anti-lock brakes help you stay in control.
6. Automatic Traction Control (ATC) takes over in slick conditions and applies torque to the wheels to reduce slippage and heighten control.
7. Propane tank, inverter, water heater and batteries are accessible for easy use and service.
8. Premium Goodyear tires ensure a safe and quiet ride.
9. Position of brake and accelerator pedals are easily adjustable to individual preferences.
10. Leather-upholstered six-way power seats with lumbar control help find the perfect position.
11. Semi-monocoque design, with its bridge-like superstructure, distributes stress evenly throughout the entire chassis.
12. Seamless one-piece molded crowned fiberglass roof covers steel framing, wood rafters, paneling and vapor barriers.
13. Sidewalls and roof with tubular steel framing offer superior strength.

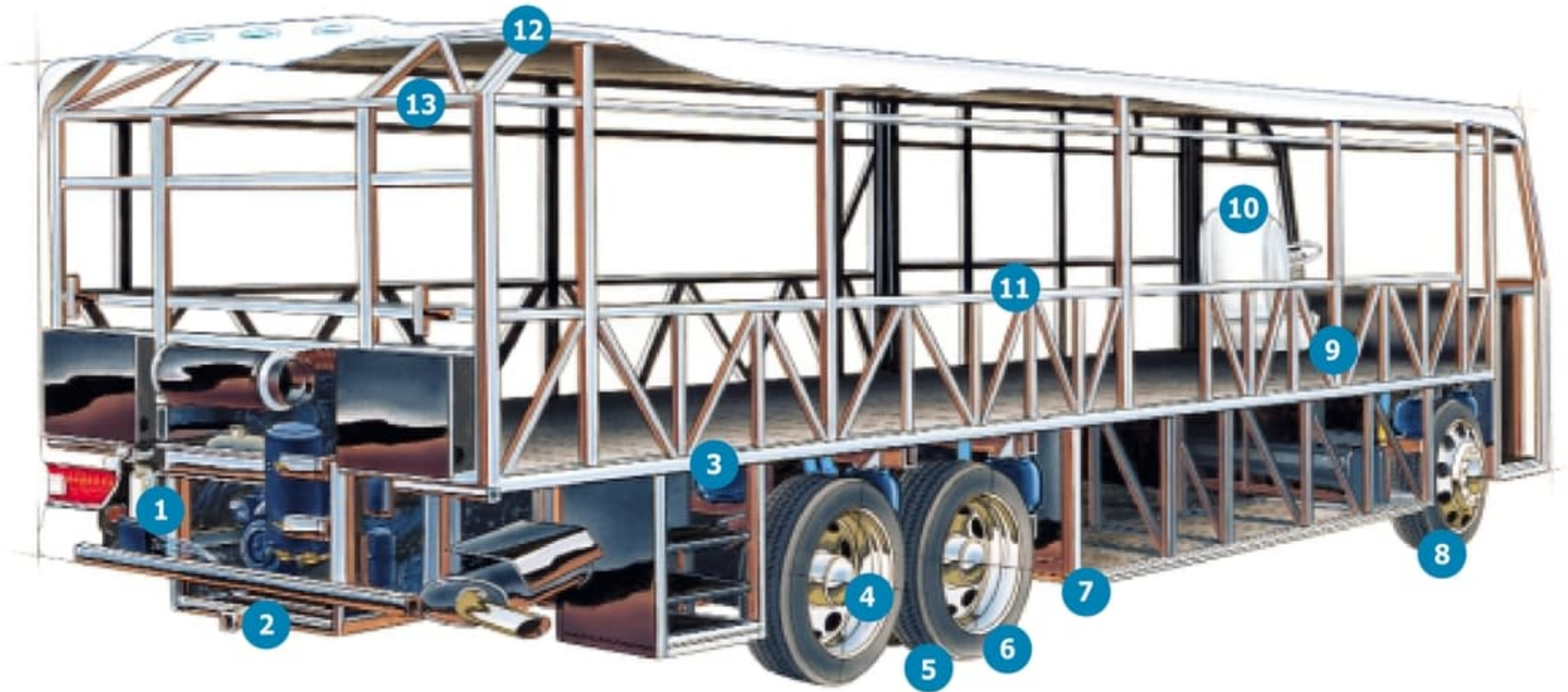
RM10H Tag Axle available on certain floorplans. (See chart on page 21).





# Put your hands on the metal

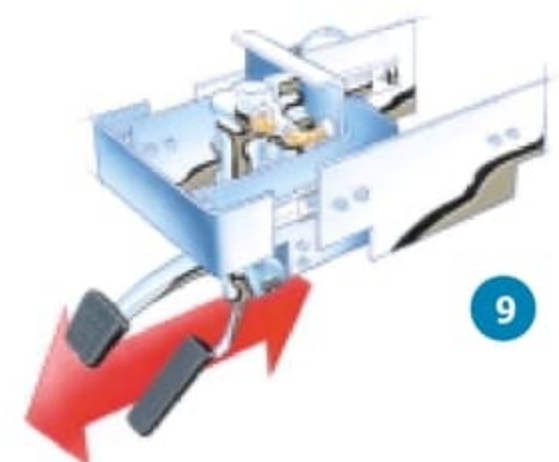
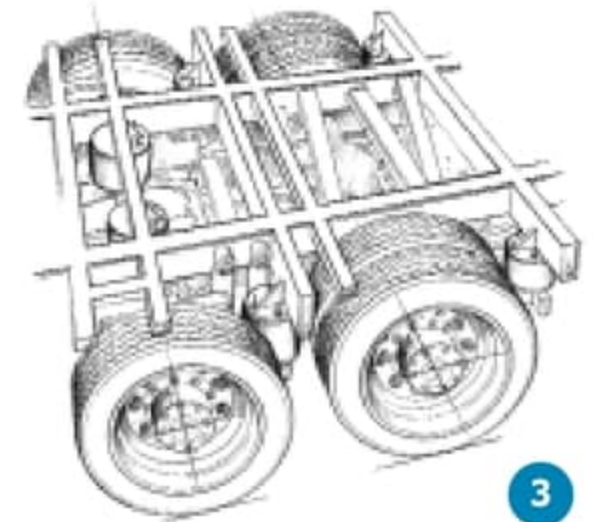
## feel the Monaco quality construction



### Roadmaster RM8H/RM10H features:

1. Cummins® turbo diesel engine gives you power, efficiency and low maintenance.
2. 10,000 lb. hitch receiver lends powerful towing capacity.
3. Cushion air glide suspension system positions eight/ten shocks and eight/ten airbags outboard with auto-leveling for greater stability and a smoother ride.
4. Unique six-degree rear axle tilt perfectly aligns the engine, transmission and differential, minimizing stress on the drivetrain and noise delivered to the coach.
5. Dual air brake system assures stopping power on steep grades. Anti-lock brakes help you stay in control.
6. Automatic Traction Control (ATC) takes over in slick conditions and applies torque to the wheels to reduce slippage and heighten control.
7. Propane tank, inverter, water heater and batteries are accessible for easy use and service.
8. Premium Goodyear tires ensure a safe and quiet ride.
9. Position of brake and accelerator pedals are easily adjustable to individual preferences.
10. Leather-upholstered six-way power seats with lumbar control help find the perfect position.
11. Semi-monocoque design, with its bridge-like superstructure, distributes stress evenly throughout the entire chassis.
12. Seamless one-piece molded crowned fiberglass roof covers steel framing, wood rafters, paneling and vapor barriers.
13. Sidewalls and roof with tubular steel framing offer superior strength.

RM10H Tag Axle available on certain floorplans. (See chart on page 21).





# It's time to entertain

the notion of comfort

*The road winds on to another place for another day. But now it is time to relax and enjoy the comfort of your domain. The amenities you'd expect to find only at a luxurious resort surround you, welcoming you to sit back and relax.*





# It's time to entertain

the notion of comfort

*The road winds on to another place for another day. But now it is time to relax and enjoy the comfort of your domain. The amenities you'd expect to find only at a luxurious resort surround you, welcoming you to sit back and relax.*





# Specifications

---

## **BODY CONSTRUCTION**

Heavy Duty Steel Superstructure  
Seamless One-Piece Molded Crowned  
Fiberglass Roof  
One-Piece Front and Rear Molded  
Fiberglass Caps  
Steel Framed Floor  
Two-Layer Structurwood Flooring  
One-Piece Windshield  
One-Piece Generator Access Door  
Engine Access Door with Pantographic  
Hinges and Struts  
Integrated Fiberglass Front and Rear Bumpers  
Laminated Gel Coat Fiberglass Sidewalls  
Full Length "Monaco" Mud Flap  
Air Activated Power Step Well Cover  
Insulated Aluminum Pantographic  
Baggage Doors with Power Locks  
Ozite Lined Pass-Through Storage  
Compartments  
Deluxe Full Body Paint  
Chrome Name Decals  
Entry Step Storage  
Rear Ladder

### **OPTIONS**

Storage Bay Side-Out Tray (One Side)  
Storage Bay Side-Out Tray (Complete  
Pass-Through)  
3M® Film Front Mask

## **COCKPIT**

High Intensity Pilot and Co-Pilot Map Lights  
Driving Lights/Headlights  
Halogen Fog Lights  
Audible Turn Signals  
Roof Mounted Dual Trumpet Air Horns  
Rear Vision System with Audio  
In-Dash AM/FM Stereo Cassette and  
CD Player  
CB Radio with Antenna  
In-Dash Compass with Inside/Outside  
Temperature  
Lighted VIP Smartwheel® with Controls  
for Windshield Wipers, ICC and  
Cruise Control

Triple Head Power Controlled Heated  
Exterior Mirrors with Turn Indicator Lights  
Systems Failure Warning Buzzer  
Leather 6-Way Power Pilot and Co-Pilot  
Seats with Electric Adjustments and  
Power Footrest on Co-Pilot Seat  
Carpet Driver and Passenger Floor Mats  
Power Sunvisors  
Overhead Ventilation Blowers  
Pantographic Windshield Wipers  
Power Steering  
Black Dial Face Beede Gauges with  
Chrome Bezel  
Cruise Control Light on Dash  
Adjustable Accelerator and Brake Pedals  
Docking Lights  
Pilot & Co-Pilot Cup Holders  
Antenna "Up" Light on Dash  
Driver's Side Window Pull-Down Sun Screen

### **OPTIONS**

Buddy Seat with Power Footrest  
Digital Cellular Antenna & Wiring  
GPS Navigation System & Separate Monitor  
Trip Tek® 3100-2 Message Center  
In-Dash AM/FM 6-Disc CD Player  
(deletes Standard Stereo)

## **APPLIANCES AND ACCESSORIES**

Large Double-Door Refrigerator with  
Ice Maker and Raised Panel Doors  
Recessed High Output Cooktop with  
Three Burners and Flush Mount Cover  
Spacesaver Convection Microwave with  
Touch Control  
Systems Monitor Panel  
TV Antenna with Booster  
Digital Satellite System Prep  
24-inch Flat Screen Color Stereo TV with  
Remote in Living Area  
20-inch Flat Screen Color Stereo TV with  
Remote in Bedroom  
Home Theater System with DVD Player  
Stereo Four-Head VCR with Remote  
and Video Switching Box

# Specifications

---

## **BODY CONSTRUCTION**

- Heavy Duty Steel Superstructure
- Seamless One-Piece Molded Crowned Fiberglass Roof
- One-Piece Front and Rear Molded Fiberglass Caps
- Steel Framed Floor
- Two-Layer Structurwood Flooring
- One-Piece Windshield
- One-Piece Generator Access Door
- Engine Access Door with Pantographic Hinges and Struts
- Integrated Fiberglass Front and Rear Bumpers
- Laminated Gel Coat Fiberglass Sidewalls
- Full Length "Monaco" Mud Flap
- Air Activated Power Step Well Cover
- Insulated Aluminum Pantographic Baggage Doors with Power Locks
- Ozite Lined Pass-Through Storage Compartments
- Deluxe Full Body Paint
- Chrome Name Decals
- Entry Step Storage
- Rear Ladder

## **OPTIONS**

- Storage Bay Slide-Out Tray (One Side)
- Storage Bay Slide-Out Tray (Complete Pass-Through)
- 3M® Film Front Mask

## **COCKPIT**

- High Intensity Pilot and Co-Pilot Map Lights
- Driving Lights/Headlights
- Halogen Fog Lights
- Audible Turn Signals
- Roof Mounted Dual Trumpet Air Horns
- Rear Vision System with Audio
- In-Dash AM/FM Stereo Cassette and CD Player
- CB Radio with Antenna
- In-Dash Compass with Inside/Outside Temperature
- Lighted VIP Smartwheel® with Controls for Windshield Wipers, ICC and Cruise Control

- Triple Head Power Controlled Heated Exterior Mirrors with Turn Indicator Lights
- Systems Failure Warning Buzzer
- Leather 6-Way Power Pilot and Co-Pilot Seats with Electric Adjustments and Power Footrest on Co-Pilot Seat
- Carpet Driver and Passenger Floor Mats
- Power Sunvisors
- Overhead Ventilation Blowers
- Pantographic Windshield Wipers
- Power Steering
- Black Dial Face Beede Gauges with Chrome Bezel
- Cruise Control Light on Dash
- Adjustable Accelerator and Brake Pedals
- Docking Lights
- Pilot & Co-Pilot Cup Holders
- Antenna "Up" Light on Dash
- Driver's Side Window Pull-Down Sun Screen

## **OPTIONS**

- Buddy Seat with Power Footrest
- Digital Cellular Antenna & Wiring
- GPS Navigation System & Separate Monitor
- Trip Tek® 3100-2 Message Center
- In-Dash AM/FM 6-Disc CD Player (deletes Standard Stereo)

## **APPLIANCES AND ACCESSORIES**

- Large Double-Door Refrigerator with Ice Maker and Raised Panel Doors
- Recessed High Output Cooktop with Three Burners and Flush Mount Cover
- Spacesaver Convection Microwave with Touch Control
- Systems Monitor Panel
- TV Antenna with Booster
- Digital Satellite System Prep
- 24-inch Flat Screen Color Stereo TV with Remote in Living Area
- 20-inch Flat Screen Color Stereo TV with Remote in Bedroom
- Home Theater System with DVD Player
- Stereo Four-Head VCR with Remote and Video Switching Box



Cable TV Hook-Up and Telephone Jacks  
Washer/Dryer Prep (N/A:34 York)

#### **OPTIONS**

Four-Door Refrigerator with Ice Maker  
and Raised Panel Doors  
Vented Combination Washer/Dryer  
(N/A:34 York)  
Fully Automatic Digital Satellite System  
Separate Ice Maker in Cabinet with  
Raised Panel Door  
Exterior Entertainment Center (20-inch  
Flat Screen TV, Two Speakers, AM/FM  
Stereo/Cassette, Phone Jack, 12V, 110V  
Receptacles) (N/A:40 Baroness, 42 Regal)

#### **INTERIOR**

Stained or Natural Oak Cabinetry  
Solid Wood Square Raised Panel Doors  
with Hidden Hinges  
Carpet Lined Cabinet Shelves  
Wall Dinette Cabinets with Solid Surface Top  
Dresser with Solid Surface Top across  
from Bed in Bedroom Slide-Outs  
(N/A:40 Chancellor)  
Make-Up Table and Dresser with Solid  
Surface Top (40 Chancellor)  
Large Overhead Storage above Roadside  
Sofa and above Slide-out Bed  
Low Friction Roller Drawer Guides  
Padded Vinyl Ceiling  
Solid Surface Kitchen Countertop with  
Stainless Steel Sink and Two Sink Covers  
Solid Surface Bathroom Countertop with  
Integrated Sink  
Day/Night Pleated Shades in Living Area  
and Blackout Shades in Bedroom  
Mini Blinds in Kitchen and Bathroom  
Fabric Sleeper Sofa with Drawer  
Fabric Swivel Rocker(s) (N/A:40 Baroness)  
Fabric J-Lounge (40 Baroness)  
Wallpaper Throughout  
Designer Carpeting in Living Area  
and Bedroom  
Legless Solid Surface Dinette Table with  
Two Chairs and Two Folding Chairs  
Ceramic Tile in Bathroom and Kitchen  
Oversized Rear Wardrobe Closet with

Mirrors (N/A:34 York, 36 S/O)  
Open Bath (40 King, 40 Chancellor)  
Closed Bath (all others)  
One-Piece Fiberglass Shower  
Glass Shower Door with Brass Frame  
Full Length Dressing Mirror  
Medicine Cabinet with Shelves  
Bathroom Mirror  
Towel Bars in Bathroom  
Raised Panel Bathroom Door  
Bedspread and Pillows  
Infrared Repeater in Bedroom TV Cabinet  
Folding Party Table (N/A:40 Baroness)  
Travel Locks  
Nightstands with Solid Surface  
Countertops  
Rope Lighting in Kitchen and Bath Area

#### **OPTIONS**

Natural Maple Cabinetry  
Natural Cherry Cabinetry  
Stained Cherry Cabinetry  
Walnut Cabinetry  
Single Door Closed Bath (40 King)  
Telescoping Door Closed Bath  
(40 Chancellor)  
Wrap Around Computer Table  
(N/A:34 York, 36 S/O, 40 Baroness)  
Leather Euro Recliner  
Fabric Euro Recliner  
Leather J-Lounge with Drawer  
Leather J-Lounge/U-Dinette (40 Legacy)  
Leather Sleeper/Loveseat with Drawer  
(N/A:40 Baroness)  
Leather Swivel Recliner  
Fabric Swivel Recliner  
Leather Barrel Chairs  
Solid Surface Kitchen Sink  
Booth Dinette  
Bath Tub (N/A:40 Baroness)



Cable TV Hook-Up and Telephone Jacks  
Washer/Dryer Prep (N/A:34 York)

#### **OPTIONS**

Four-Door Refrigerator with Ice Maker  
and Raised Panel Doors  
Vented Combination Washer/Dryer  
(N/A:34 York)  
Fully Automatic Digital Satellite System  
Separate Ice Maker in Cabinet with  
Raised Panel Door  
Exterior Entertainment Center (20-inch  
Flat Screen TV, Two Speakers, AM/FM  
Stereo/Cassette, Phone Jack, 12V, 110V  
Receptacles) (N/A:40 Baroness, 42 Regal)

#### **INTERIOR**

Stained or Natural Oak Cabinetry  
Solid Wood Square Raised Panel Doors  
with Hidden Hinges  
Carpet Lined Cabinet Shelves  
Wall Dinette Cabinets with Solid Surface Top  
Dresser with Solid Surface Top across  
from Bed in Bedroom Side-Outs  
(N/A:40 Chancellor)  
Make-Up Table and Dresser with Solid  
Surface Top (40 Chancellor)  
Large Overhead Storage above Roadside  
Sofa and above Slide-out Bed  
Low Friction Roller Drawer Guides  
Padded Vinyl Ceiling  
Solid Surface Kitchen Countertop with  
Stainless Steel Sink and Two Sink Covers  
Solid Surface Bathroom Countertop with  
Integrated Sink  
Day/Night Pleated Shades in Living Area  
and Blackout Shades in Bedroom  
Mini Blinds in Kitchen and Bathroom  
Fabric Sleeper Sofa with Drawer  
Fabric Swivel Rocker(s) (N/A:40 Baroness)  
Fabric J-Lounge (40 Baroness)  
Wallpaper Throughout  
Designer Carpeting in Living Area  
and Bedroom  
Legless Solid Surface Dinette Table with  
Two Chairs and Two Folding Chairs  
Ceramic Tile in Bathroom and Kitchen  
Oversized Rear Wardrobe Closet with

Mirrors (N/A:34 York, 36 S/O)  
Open Bath (40 King, 40 Chancellor)  
Closed Bath (all others)  
One-Piece Fiberglass Shower  
Glass Shower Door with Brass Frame  
Full Length Dressing Mirror  
Medicine Cabinet with Shelves  
Bathroom Mirror  
Towel Bars in Bathroom  
Raised Panel Bathroom Door  
Bedsread and Pillows  
Infrared Repeater in Bedroom TV Cabinet  
Folding Party Table (N/A:40 Baroness)  
Travel Locks  
Nightstands with Solid Surface  
Countertops  
Rope Lighting in Kitchen and Bath Area

#### **OPTIONS**

Natural Maple Cabinetry  
Natural Cherry Cabinetry  
Stained Cherry Cabinetry  
Walnut Cabinetry  
Single Door Closed Bath (40 King)  
Telescoping Door Closed Bath  
(40 Chancellor)  
Wrap Around Computer Table  
(N/A:34 York, 36 S/O, 40 Baroness)  
Leather Euro Recliner  
Fabric Euro Recliner  
Leather J-Lounge with Drawer  
Leather J-Lounge/U-Dinette (40 Legacy)  
Leather Sleeper/Loveseat with Drawer  
(N/A:40 Baroness)  
Leather Swivel Recliner  
Fabric Swivel Recliner  
Leather Barrel Chairs  
Solid Surface Kitchen Sink  
Booth Dinette  
Bath Tub (N/A:40 Baroness)



## **ELECTRICAL SYSTEMS AND LIGHTS**

50 amp 120V / 240V Distribution Panel and  
Power Cord with Quick Disconnect  
Onan®7.5 KW QD Diesel Generator on  
Power Slide-Out with Auxiliary Start Switch  
RC 7GS Panel with 2,000 Watt Inverter  
Electrical Panel Front Roadside Compartment  
Four 6V Deep Cycle Batteries  
Two 31D 12V Deep Cycle Batteries  
Battery Disconnect Switch  
Battery Maintainer  
Porch Light  
Courtesy Night Lights in Entry Step  
and Bedroom  
Water Pump Switch (Galley, Bathroom  
and Service Bay)  
Lights in Outside Storage Compartment  
120V Receptacles in Outside Storage  
Compartment  
Underhood Utility Light  
Driver Side Service Light  
Fluorescent Lights in Kitchen  
Decorative Dining Light  
Halogen Lights with Dimmer Switches  
under all Overhead Cabinets  
Mood Lights under Kitchen and Bathroom  
Toe Kicks  
Cosmetic Vanity Lights in Bathroom  
Lighted Utility Center (Telephone, Cable TV,  
Water, Electrical Hook-Ups)  
Decorative Wall Lights in Bedroom  
Decorative Wall Lights in Living Area

### **OPTIONS**

Power Cord Reel  
Solar Panel  
Surge Protector

## **PLUMBING AND LP SYSTEMS**

Manabloc®Water System for Entire Coach  
10-Gallon LP Gas/Electric Water Heater  
with Electronic Ignition (DSI)  
Water Pump  
Winterization Valving System  
Water Heater Bypass Valve  
Central Water Purifier in Service Compartment  
Single Lever Shower Faucet  
China Toilet  
No-Fuss Flush Black Holding Tank  
Rinsing System

Insulated Systems Compartment with  
Easy Access to Hook-Up  
Outside Shower with Hot and Cold Water  
Gravity and Pressurized Water Fill

### **OPTIONS**

Aqua-Hot®Heating System (ILO Furnace  
and Water Heater) (N/A: 34 York)  
Insta-Hot®Water System

## **HEATING, VENTS AND AIR CONDITIONING**

Two Low Profile Ducted 13.5M BTU Roof  
Air Conditioners with Electronic Ignition  
and Heat Pump  
42M BTU Electronic Ignition Furnace  
Electronic AC/Heat Climate Control System  
12V Attic Fan with Wall Thermostat  
in Kitchen  
12V Attic Fan in Bath Area and Private Toilet  
Wet Bay with 12V Heater

## **WINDOWS, DOORS AND AWNINGS**

Radius Dual Pane Safety Glass Dark Tinted  
Slider Windows  
Front Entry Door with Removable Screen  
and Awning  
Keyless Remote Entry System with  
Pocket Remote  
Power Entrance Step  
Tinted Skylight in Bathroom  
Lighted Interior and Exterior Grab Handles  
Patio Awning with Color Coordinated  
Hardware  
Window Awning(s)  
Slide-Out Awning

### **OPTIONS**

Carefree Automatic Patio Awning  
Girard Automatic Patio Awning



## **ELECTRICAL SYSTEMS AND LIGHTS**

50 amp 120V / 240V Distribution Panel and  
Power Cord with Quick Disconnect  
Onan®7.5 KW QD Diesel Generator on  
Power Slide-Out with Auxiliary Start Switch  
RC 7GS Panel with 2,000 Watt Inverter  
Electrical Panel Front Roadside Compartment  
Four 6V Deep Cycle Batteries  
Two 31D 12V Deep Cycle Batteries  
Battery Disconnect Switch  
Battery Maintainer  
Porch Light  
Courtesy Night Lights in Entry Step  
and Bedroom  
Water Pump Switch (Galley, Bathroom  
and Service Bay)  
Lights in Outside Storage Compartment  
120V Receptacles in Outside Storage  
Compartment  
Underhood Utility Light  
Driver Side Service Light  
Fluorescent Lights in Kitchen  
Decorative Dining Light  
Halogen Lights with Dimmer Switches  
under all Overhead Cabinets  
Mood Lights under Kitchen and Bathroom  
Toe Kicks  
Cosmetic Vanity Lights in Bathroom  
Lighted Utility Center (Telephone, Cable TV,  
Water, Electrical Hook-Ups)  
Decorative Wall Lights in Bedroom  
Decorative Wall Lights in Living Area

### **OPTIONS**

Power Cord Reel  
Solar Panel  
Surge Protector

## **PLUMBING AND LP SYSTEMS**

Manabloc®Water System for Entire Coach  
10-Gallon LP Gas/Electric Water Heater  
with Electronic Ignition (DSI)  
Water Pump  
Winterization Valving System  
Water Heater Bypass Valve  
Central Water Purifier in Service Compartment  
Single Lever Shower Faucet  
China Toilet  
No-Fuss Flush Black Holding Tank  
Rinsing System

Insulated Systems Compartment with  
Easy Access to Hook-Up  
Outside Shower with Hot and Cold Water  
Gravity and Pressurized Water Fill

### **OPTIONS**

Aqua-Hot®Heating System (ILO Furnace  
and Water Heater) (N/A:34 York)  
Insta-Hot®Water System

## **HEATING, VENTS AND AIR CONDITIONING**

Two Low Profile Ducted 13.5M BTU Roof  
Air Conditioners with Electronic Ignition  
and Heat Pump  
42M BTU Electronic Ignition Furnace  
Electronic AC/Heat Climate Control System  
12V Attic Fan with Wall Thermostat  
in Kitchen  
12V Attic Fan in Bath Area and Private Toilet  
Wet Bay with 12V Heater

## **WINDOWS, DOORS AND AWNINGS**

Radius Dual Pane Safety Glass Dark Tinted  
Slider Windows  
Front Entry Door with Removable Screen  
and Awning  
Keyless Remote Entry System with  
Pocket Remote  
Power Entrance Step  
Tinted Skylight in Bathroom  
Lighted Interior and Exterior Grab Handles  
Patio Awning with Color Coordinated  
Hardware  
Window Awning(s)  
Slide-Out Awning

### **OPTIONS**

Carefree Automatic Patio Awning  
Girard Automatic Patio Awning



## SAFETY

Back-Up Alarm  
Fire Extinguisher  
Deadbolt Lock on Entrance Door  
120V GFI Protected Circuit (Kitchen, Bathroom, Exterior)  
LP Gas Detector  
Smoke Detector  
Carbon Monoxide Detector  
Pilot and Co-Pilot Three-Point Seat Belts (Lap and Shoulder)  
Third Brake Safety Light  
Egress Window

## OPTIONS

Deluxe Security System  
Security Safe

## CHASSIS/ENGINE/SUSPENSION

Semi-Monocoque Roadmaster Chassis  
Cummins® ISL 370 Electronic Engine with  
Allison® 3000 MH 6-Speed World Transmission and Electronic Shifter  
Torque: 1,200 lbs./ft. Max. Net at 1,300 RPMs

Rear Axle Ratio: 4.78:1  
Cubic Inch Displacement: 540"/8.8L  
200 amp Alternator  
Tires: 295/80R/22.5 Load Range (H)  
Cushion Air Glide Suspension with Eight  
Outboard Mounted Air Bags and Eight Bilstein Shock Absorbers (10 Air Bags and 10 Bilstein Shocks on Tag Axles)  
Automatic Traction Control  
Polished Aluminum Wheels  
Transmission Temperature Gauge  
Transmission Oil Cooler  
Dual Fuel Fill  
Dual Air Anti-Lock Braking System with Front Disc Brakes and Rear Drum Brakes  
Jacobs Engine Brake  
Auto Slack Adjusters  
Fuel/Water Separator  
Rear Side Mount Radiator  
Air Cleaner Restriction Indicator  
Engine Block Heater with Switch on Dash  
Automatic Air Leveling System  
10,000 lb. Hitch Receiver\* with 7-Way

Hitch Plug  
Undercoating

## OPTIONS

Cummins® ISL 400 Electronic Engine with  
Allison® 3000 MH 6-Speed World Transmission and Electronic Shifter  
Torque: 1,200 lbs./ft. Max. Net at 1,300 RPMs (ISL 400)  
Rear Axle Ratio: 4.78:1 (ISL 400)  
Cubic Inch Displacement: 540"/8.8L (ISL 400)  
Hydraulic Leveling System  
Dual Leveling Systems (Air/Hydraulic)

*\* Your towed vehicle should be equipped with auxiliary brakes if the weight of the towed load exceeds 1,000 lbs.*

|                       | 34     | 36     | 38     | 38     | 40     | 40     | 40     | 40     | 40         | 40       | 42       | 42     |
|-----------------------|--------|--------|--------|--------|--------|--------|--------|--------|------------|----------|----------|--------|
| WEIGHT RATINGS (LBS.) | YORK   | S/O    | JACK   | EARL   | KING   | REGENT | QUEEN  | LEGACY | CHANCELLOR | BARONESS | PRINCESS | REGAL  |
| Gross Vehicle         | 34,600 | 34,600 | 44,600 | 44,600 | 34,600 | 44,600 | 44,600 | 44,600 | 44,600     | 44,600   | 44,600   | 44,600 |
| Gross Combined        | 44,600 | 44,600 | 54,600 | 54,600 | 44,600 | 54,600 | 54,600 | 54,600 | 54,600     | 54,600   | 54,600   | 54,600 |
| Front Gross Axle      | 14,600 | 14,600 | 14,600 | 14,600 | 14,600 | 14,600 | 14,600 | 14,600 | 14,600     | 14,600   | 14,600   | 14,600 |
| Rear Gross Axle       | 20,000 | 20,000 | 20,000 | 20,000 | 20,000 | 20,000 | 20,000 | 20,000 | 20,000     | 20,000   | 20,000   | 20,000 |
| Tag Axle              | N/A    | N/A    | 10,000 | 10,000 | N/A    | 10,000 | 10,000 | 10,000 | 10,000     | 10,000   | 10,000   | 10,000 |

## MEASUREMENTS

|                           |         |         |         |         |         |         |         |         |         |         |         |         |
|---------------------------|---------|---------|---------|---------|---------|---------|---------|---------|---------|---------|---------|---------|
| Wheelbase                 | 217"    | 228"    | 236.5"  | 236.5"  | 270"    | 254"    | 254"    | 242"    | 254"    | 242"    | 266"    | 266"    |
| Overall Length            | 34' 10" | 36' 10" | 38' 10" | 38' 10" | 40' 10" | 40' 10" | 40' 10" | 39' 10" | 40' 10" | 39' 10" | 41' 10" | 41' 10" |
| Overall Height (with A/C) | 11' 11" | 11' 11" | 11' 11" | 11' 11" | 11' 11" | 11' 11" | 11' 11" | 11' 11" | 11' 11" | 11' 11" | 11' 11" | 11' 11" |
| Interior Height           | 79"     | 79"     | 79"     | 79"     | 79"     | 79"     | 79"     | 79"     | 79"     | 79"     | 79"     | 79"     |
| Interior Width            | 95"     | 95"     | 95"     | 95"     | 95"     | 95"     | 95"     | 95"     | 95"     | 95"     | 95"     | 95"     |
| Exterior Width            | 100.5"  | 100.5"  | 100.5"  | 100.5"  | 100.5"  | 100.5"  | 100.5"  | 100.5"  | 100.5"  | 100.5"  | 100.5"  | 100.5"  |

**TANK CAPACITY (GAL.)** All tank capacities are approximate. Actual "usable capacity" may vary as a result of variances in installation and fabrication.

|              |     |     |     |     |     |     |     |     |     |     |     |     |
|--------------|-----|-----|-----|-----|-----|-----|-----|-----|-----|-----|-----|-----|
| Water Heater | 10  | 10  | 10  | 10  | 10  | 10  | 10  | 10  | 10  | 10  | 10  | 10  |
| Gray Tank    | 60  | 60  | 60  | 60  | 60  | 60  | 60  | 60  | 60  | 60  | 60  | 60  |
| Black Tank   | 40  | 40  | 40  | 40  | 40  | 40  | 40  | 40  | 40  | 40  | 40  | 40  |
| Fresh Tank   | 100 | 100 | 100 | 100 | 100 | 100 | 100 | 100 | 100 | 100 | 100 | 100 |
| LP Tank*     | 38  | 38  | 38  | 38  | 38  | 38  | 38  | 38  | 38  | 38  | 38  | 38  |
| Fuel Tank    | 130 | 130 | 130 | 130 | 130 | 130 | 130 | 130 | 130 | 130 | 130 | 130 |

\* Actual filled LP capacity is 80% of listing due to safety shut-off required on tank.

Due to the large variety of options and floorplan arrangements available to our customers, actual weights for each unit may differ. Monaco Coach provides a weight sticker on each unit we produce which includes that unit's tank capacities and approximate weight. Consult your local Monaco Coach dealer for unit availability and further information. The information printed in this brochure reflects product

design, fabrication, and component parts at the date of printing. The manufacturer reserves the right, at any time, to make changes in product design, material or component specifications as its sole option, without notice. This includes the substitution of components of a different brand or trade name which will result in comparable performance. All information printed in this brochure is subject to change after the date of printing. Some fea-

tures shown or mentioned in this brochure are optional and may only be available in selected floorplans. Photographs may show props or decorations that are not standard equipment on Monaco Coach models. Monaco Coach, the Monaco logo and its design, are registered trademarks. All other products and company names are trademarks and/or registered trademarks of their respective holders.



SAFETY

- Back-Up Alarm
- Fire Extinguisher
- Deadbolt Lock on Entrance Door
- 120V GFI Protected Circuit (Kitchen, Bathroom, Exterior)
- LP Gas Detector
- Smoke Detector
- Carbon Monoxide Detector
- Pilot and Co-Pilot Three-Point Seat Belts (Lap and Shoulder)
- Third Brake Safety Light
- Egress Window

OPTIONS

- Deluxe Security System
- Security Safe

CHASSIS/ENGINE/SUSPENSION

- Semi-Monocoque Roadmaster Chassis
- Cummins®ISL 370 Electronic Engine with Allison®3000 MH 6-Speed World Transmission and Electronic Shifter
- Torque: 1,200 lbs./ft. Max. Net at 1,300 RPMs

- Rear Axle Ratio: 4.78:1
- Cubic Inch Displacement: 540"/8.8L
- 200 amp Alternator
- Tires: 295/80R/22.5 Load Range (H)
- Cushion Air Glide Suspension with Eight Outboard Mounted Air Bags and Eight Bilstein Shock Absorbers (10 Air Bags and 10 Bilstein Shocks on Tag Axles)
- Automatic Traction Control
- Polished Aluminum Wheels
- Transmission Temperature Gauge
- Transmission Oil Cooler
- Dual Fuel Fill
- Dual Air Anti-Lock Braking System with Front Disc Brakes and Rear Drum Brakes
- Jacobs Engine Brake
- Auto Slack Adjusters
- Fuel/Water Separator
- Rear Side Mount Radiator
- Air Cleaner Restriction Indicator
- Engine Block Heater with Switch on Dash
- Automatic Air Leveling System
- 10,000 lb. Hitch Receiver\* with 7-Way

- Hitch Plug
- Undercoating

OPTIONS

- Cummins®ISL 400 Electronic Engine with Allison®3000 MH 6-Speed World Transmission and Electronic Shifter
- Torque: 1,200 lbs./ft. Max Net at 1,300 RPMs (ISL 400)
- Rear Axle Ratio: 4.78:1 (ISL 400)
- Cubic Inch Displacement: 540"/8.8L (ISL 400)
- Hydraulic Leveling System
- Dual Leveling Systems (Air/Hydraulic)

\* Your towed vehicle should be equipped with auxiliary brakes if the weight of the towed load exceeds 1,000 lbs.

|                       | 34     | 36     | 38     | 38     | 40     | 40     | 40     | 40     | 40         | 40       | 42       | 42     |
|-----------------------|--------|--------|--------|--------|--------|--------|--------|--------|------------|----------|----------|--------|
| WEIGHT RATINGS (LBS.) | YORK   | S/O    | JACK   | EARL   | KING   | REGENT | QUEEN  | LEGACY | CHANCELLOR | BARONESS | PRINCESS | REGAL  |
| Gross Vehicle         | 34,600 | 34,600 | 44,600 | 44,600 | 34,600 | 44,600 | 44,600 | 44,600 | 44,600     | 44,600   | 44,600   | 44,600 |
| Gross Combined        | 44,600 | 44,600 | 54,600 | 54,600 | 44,600 | 54,600 | 54,600 | 54,600 | 54,600     | 54,600   | 54,600   | 54,600 |
| Front Gross Axle      | 14,600 | 14,600 | 14,600 | 14,600 | 14,600 | 14,600 | 14,600 | 14,600 | 14,600     | 14,600   | 14,600   | 14,600 |
| Rear Gross Axle       | 20,000 | 20,000 | 20,000 | 20,000 | 20,000 | 20,000 | 20,000 | 20,000 | 20,000     | 20,000   | 20,000   | 20,000 |
| Tag Axle              | N/A    | N/A    | 10,000 | 10,000 | N/A    | 10,000 | 10,000 | 10,000 | 10,000     | 10,000   | 10,000   | 10,000 |

MEASUREMENTS

|                           |         |         |         |         |         |         |         |         |         |         |         |         |
|---------------------------|---------|---------|---------|---------|---------|---------|---------|---------|---------|---------|---------|---------|
| Wheelbase                 | 217"    | 228"    | 236.5"  | 236.5"  | 270"    | 254"    | 254"    | 242"    | 254"    | 242"    | 266"    | 266"    |
| Overall Length            | 34' 10" | 36' 10" | 38' 10" | 38' 10" | 40' 10" | 40' 10" | 40' 10" | 39' 10" | 40' 10" | 39' 10" | 41' 10" | 41' 10" |
| Overall Height (with A/C) | 11' 11" | 11' 11" | 11' 11" | 11' 11" | 11' 11" | 11' 11" | 11' 11" | 11' 11" | 11' 11" | 11' 11" | 11' 11" | 11' 11" |
| Interior Height           | 79"     | 79"     | 79"     | 79"     | 79"     | 79"     | 79"     | 79"     | 79"     | 79"     | 79"     | 79"     |
| Interior Width            | 95"     | 95"     | 95"     | 95"     | 95"     | 95"     | 95"     | 95"     | 95"     | 95"     | 95"     | 95"     |
| Exterior Width            | 100.5"  | 100.5"  | 100.5"  | 100.5"  | 100.5"  | 100.5"  | 100.5"  | 100.5"  | 100.5"  | 100.5"  | 100.5"  | 100.5"  |

TANK CAPACITY (GAL.) All tank capacities are approximate. Actual "usable capacity" may vary as a result of variances in installation and fabrication.

|              |     |     |     |     |     |     |     |     |     |     |     |     |
|--------------|-----|-----|-----|-----|-----|-----|-----|-----|-----|-----|-----|-----|
| Water Heater | 10  | 10  | 10  | 10  | 10  | 10  | 10  | 10  | 10  | 10  | 10  | 10  |
| Gray Tank    | 60  | 60  | 60  | 60  | 60  | 60  | 60  | 60  | 60  | 60  | 60  | 60  |
| Black Tank   | 40  | 40  | 40  | 40  | 40  | 40  | 40  | 40  | 40  | 40  | 40  | 40  |
| Fresh Tank   | 100 | 100 | 100 | 100 | 100 | 100 | 100 | 100 | 100 | 100 | 100 | 100 |
| LP Tank*     | 38  | 38  | 38  | 38  | 38  | 38  | 38  | 38  | 38  | 38  | 38  | 38  |
| Fuel Tank    | 130 | 130 | 130 | 130 | 130 | 130 | 130 | 130 | 130 | 130 | 130 | 130 |

\* Actual filled LP capacity is 80% of listing due to safety shut-off required on tank.

Due to the large variety of options and floorplan arrangements available to our customers, actual weights for each unit may differ. Monaco Coach provides a weight sticker on each unit we produce which includes that unit's tank capacities and approximate weight. Consult your local Monaco Coach dealer for unit availability and further information. The information printed in this brochure reflects product design, fabrication, and component parts at the date of printing. The manufacturer reserves the right, at any time, to make changes in product design, material or component specifications as its sole option, without notice. This includes the substitution of components of a different brand or trade name which will result in comparable performance. All information printed in this brochure is subject to change after the date of printing. Some features shown or mentioned in this brochure are optional and may only be available in selected floorplans. Photographs may show props or decorations that are not standard equipment on Monaco Coach models. Monaco Coach, the Monaco logo and its design, are registered trademarks. All other products and company names are trademarks and/or registered trademarks of their respective holders.



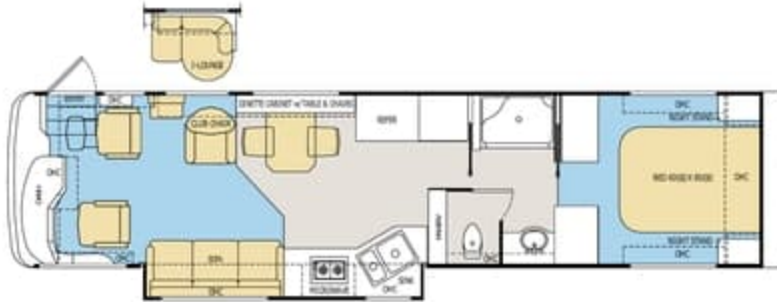
# Floorplans

TILE CARPET

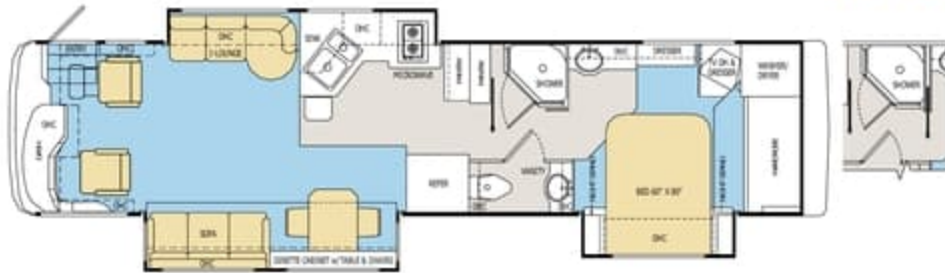
34 YORK



36 S/O



38 EARL



38 JACK





# Floorplans

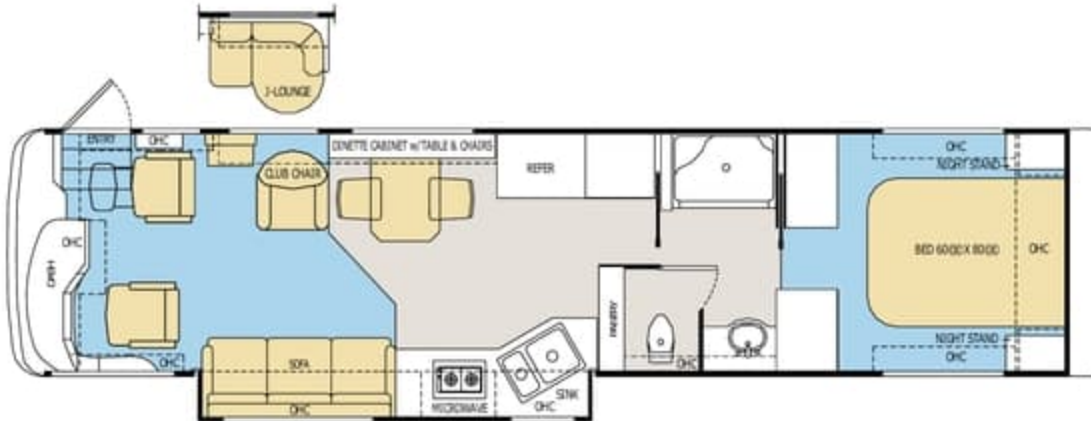
TILE

CARPET

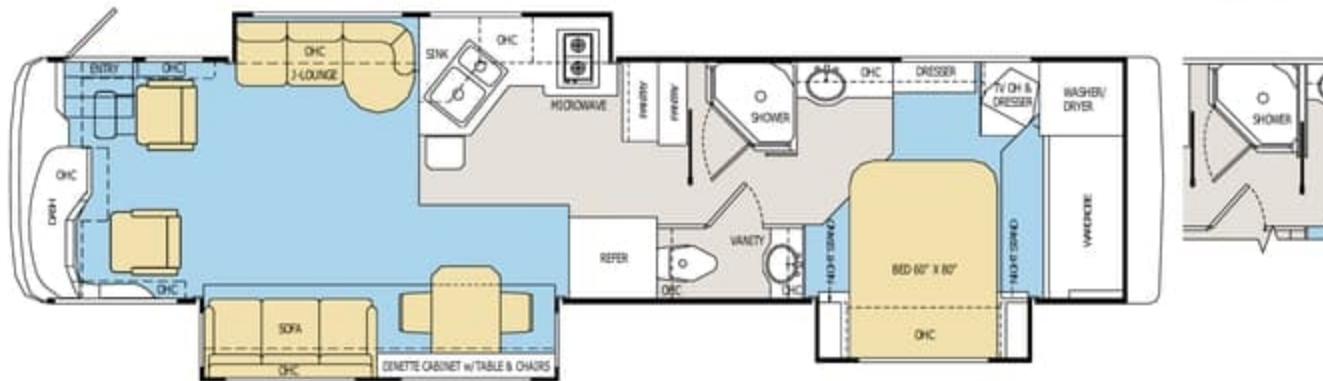
34 YORK



36 S/O



38 EARL



38 JACK





## 40 KING



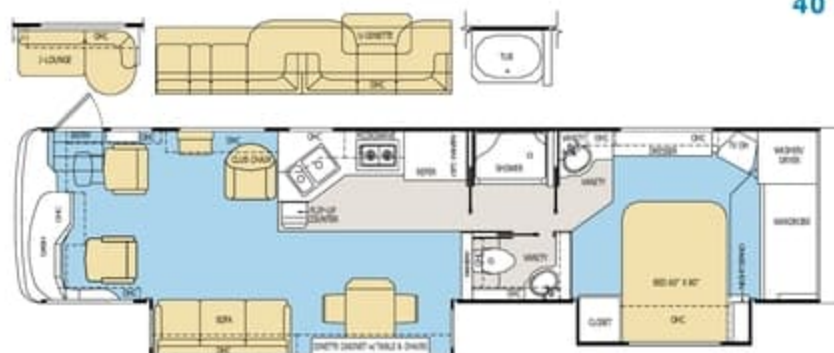
## 40 REGENT



## 40 QUEEN



## 40 LEGACY





## 40 KING



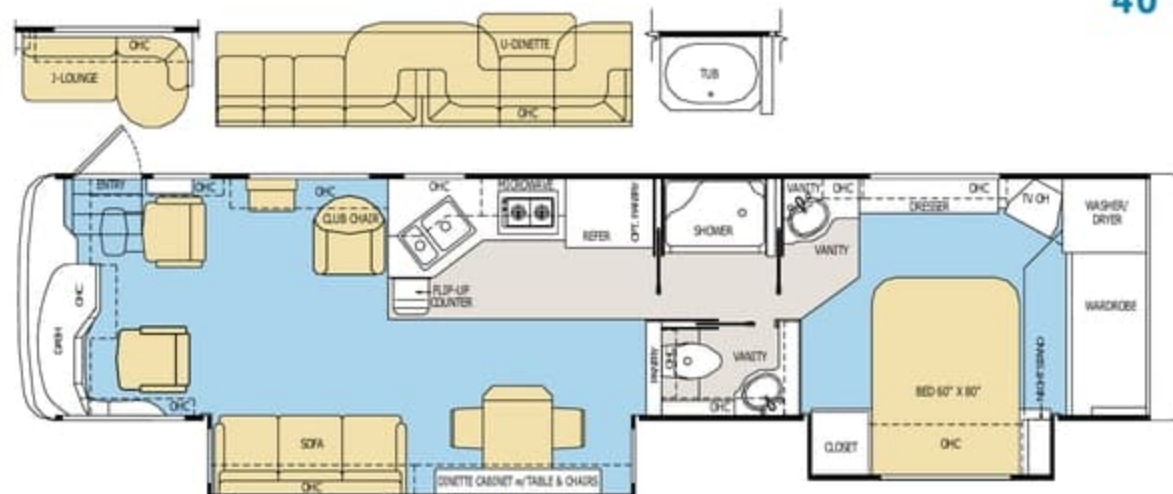
## 40 REGENT



## 40 QUEEN



## 40 LEGACY



40 CHANCELLOR



40 BARONESS



## 42 PRINCESS



42 REGAL





[illegible]

The floor plan of the 10th floor is divided into several functional areas:

- Lounge Area:** Located at the top left, featuring a large L-shaped sofa, a TV, and a fireplace.
- Entry:** A central area with a coat closet (CLO) and a small table with chairs.
- Kitchen:** Includes a sink, a stove, a refrigerator (REF), and a flip-up counter.
- Bathroom:** Features a private bath with a toilet, a shower, and a vanity.
- Bedroom:** Contains a large bed (60" x 80"), a dresser, a TV, and a wardrobe.
- Living Area:** Includes a sofa, a coffee table, and a fireplace.

1000 sq. ft. model home

Floor plan details:

- ENTRY
- OHC (Overhead Cabinet)
- J-LOUNGE
- SINK
- MICROWAVE
- PRIVATE BATH
- TOILET
- VANITY
- OHC/DEESSER
- TV OH
- WARDROBE OPT. W/D
- WARDROBE
- BED 60" X 80"
- NIGHT STAND
- SHIRT CLOSET
- OHC
- REFER (Refrigerator)
- SHOWER
- 2ND BATH
- SOFA
- OHC
- SENNETTE CABINET w/ TABLE & CHAIRS
- TV OH
- OHC
- TV OH





**Almond**



**Hydrangea**



**Lido Bay**



**Lithograph**

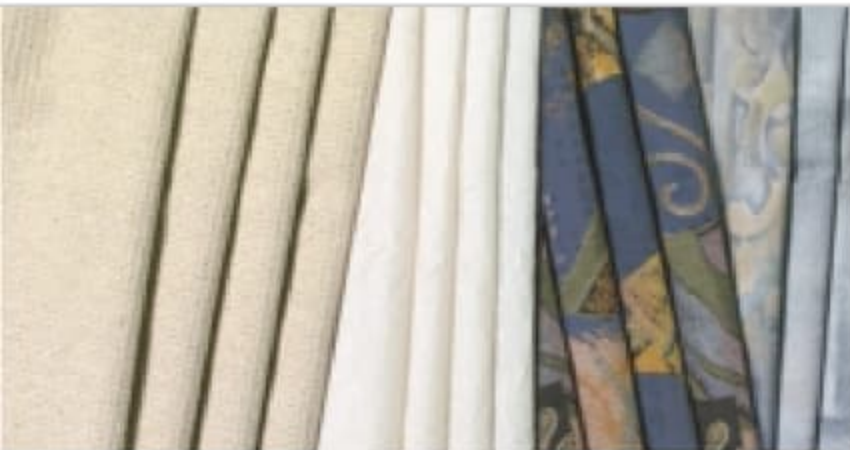
**A** Sofa   **B** Accent   **C** Chair   **D** Bedspread



**Almond**



**Hydrangea**



**Lido Bay**



**Lithograph**

**A** Sofa   **B** Accent   **C** Chair   **D** Bedspread





**Mineral**



**Ralph Lauren Grand Champion**



**Ralph Lauren Classic**



**Chinchilla**

**A** Sofa   **B** Accent   **C** Chair   **D** Bedspread

**Note:** While the color of the motorhome's exterior and the interior fabrics shown in this sales brochure are fair and reasonable depictions, they may not be an exact match of the actual colors. Due to product improvements, changes during the model year and/or transcription errors that may occur, information presented within this brochure may not be accurate at the time of your purchase. If certain information is significant to your purchasing decision, please confirm the information with your dealer prior to submitting your order.





**Mineral**



**Ralph Lauren Grand Champion**



**Ralph Lauren Classic**



**Chinchilla**

**A** Sofa   **B** Accent   **C** Chair   **D** Bedspread

**Note:** While the color of the motorhome's exterior and the interior fabrics shown in this sales brochure are fair and reasonable depictions, they may not be an exact match of the actual colors. Due to product improvements, changes during the model year and/or transcription errors that may occur, information presented within this brochure may not be accurate at the time of your purchase. If certain information is significant to your purchasing decision, please confirm the information with your dealer prior to submitting your order.