

EM PRESS 2003

# EM PRESS



2003 EDITION

▶  
LEADING  
THE  
WAY  
▶





EM PRESS 2003

EM PRESS



2003 EDITION



LEADING

THE

WAY





# WHERE THE JOURNEY BEGINS

Live life to the fullest with Triple E's 2003 Empress. Meander from sea to sea and see everything in between. Encounter nature's wonders, explore new cities, and at the end of each day, take the time to marvel at how far you've come.



A3852FB shown with Jewelled Amber decor



NEW DÉCOR CHOICES | 3



IMPORTANT DETAILS | 4



AMPLE STORAGE | 5



CONSTRUCTION | 6



NEW FLOOR PLANS | 7



# WHERE THE JOURNEY BEGINS

Live life to the fullest with Triple E's 2003 Empress. Meander from sea to sea and see everything in between. Encounter nature's wonders, explore new cities, and at the end of each day, take the time to marvel at how far you've come.



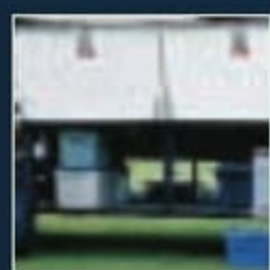
A3852FB shown with Jewelled Amber decor



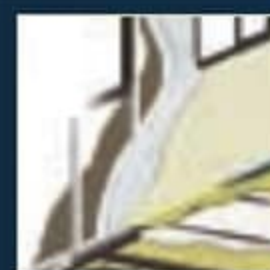
NEW DÉCOR CHOICES | 3



IMPORTANT DETAILS | 4



AMPLE STORAGE | 5



CONSTRUCTION | 6



NEW FLOOR PLANS | 7



# EMPRESS

2003 EDITION

## THE LARGEST HOME ON WHEELS

- THIRTY EIGHT FEET OF WELL APPOINTED SPACE
- ROOMY BEDROOM COMPLETE WITH SLIDE-OUT QUEEN SIZE BED
- IMPRESSIVE LIVING & DINING AREA

## SOPHISTICATED DESIGN & LAYOUT

- WELL ENGINEERED TO FIT YOUR NEEDS
- STYLISH COORDINATED INTERIOR DESIGN
- FIRST CLASS FLEXSTEEL FURNITURE

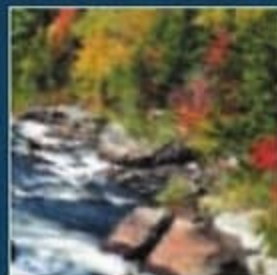
## WORLD CLASS CONSTRUCTION

- BUILT ON A SOLID FREIGHTLINER FOUNDATION
- WELL INSULATED FOR FOUR SEASON COMFORT
- MANUFACTURED WITH TOP GRADE MATERIALS

## TAILORING TO FIT YOUR LIFE

- CHOOSE FROM A HOST OF EXCITING OPTIONS
- SELECT THE DÉCOR THAT BEST SUITES YOUR TASTE
- PICK FROM THE WELL THOUGHT OUT FLOOR PLANS

THE LITTLE THINGS MAKE A BIG DIFFERENCE





# EMPRESS



2003 EDITION

## THE LARGEST HOME ON WHEELS

- THIRTY EIGHT FEET OF WELL APPOINTED SPACE
- ROOMY BEDROOM COMPLETE WITH SLIDE-OUT QUEEN SIZE BED
- IMPRESSIVE LIVING & DINING AREA

## SOPHISTICATED DESIGN & LAYOUT

- WELL ENGINEERED TO FIT YOUR NEEDS
- STYLISH COORDINATED INTERIOR DESIGN
- FIRST CLASS FLEXSTEEL FURNITURE

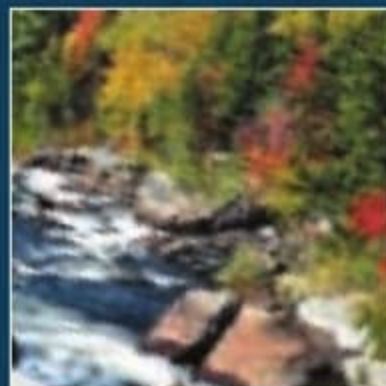
## WORLD CLASS CONSTRUCTION

- BUILT ON A SOLID FREIGHTLINER FOUNDATION
- WELL INSULATED FOR FOUR SEASON COMFORT
- MANUFACTURED WITH TOP GRADE MATERIALS

## TAILORING TO FIT YOUR LIFE

- CHOOSE FROM A HOST OF EXCITING OPTIONS
- SELECT THE DÉCOR THAT BEST SUITES YOUR TASTE
- PICK FROM THE WELL THOUGHT OUT FLOOR PLANS

THE LITTLE THINGS MAKE A BIG DIFFERENCE





# FOR SEASON AFTER SEASON OF COMFORT

The Empress is the perfect living environment. Built for total four-season versatility, you can enjoy life on the road year-round.

In the winter months, the Empress's high insulation values, which are the best in its class, ensure you stay warm and cozy.

Similarly, in the spring and fall, chills are locked out just as style and flexibility are locked in. And as the mercury rises in the summer, you control the climate inside thanks to well-engineered air conditioning systems.



## SIDE RADIATOR

The Empress has been engineered with Freightliner's side radiator to improve cooling capacity and allow for more horsepower to the wheels.



## WALL/ROOF/FLOOR

The well insulated wall, roof and floor construction maximizes climate control inside your coach for four season comfort.

*See more on Page 6*





# FOR SEASON AFTER SEASON OF COMFORT

The Empress is the perfect living environment. Built for total four-season versatility, you can enjoy life on the road year-round.

In the winter months, the Empress's high insulation values, which are the best in its class, ensure you stay warm and cozy. Similarly, in the spring and fall, chills are locked out just as style and flexibility are locked in. And as the mercury rises in the summer, you control the climate inside thanks to well-engineered air conditioning systems.



## SIDE RADIATOR

The Empress has been engineered with Freightliner's side radiator to improve cooling capacity and allow for more horsepower to the wheels.



## WALL/ROOF/FLOOR

The well insulated wall, roof and floor construction maximizes climate control inside your coach for four season comfort.

*See more on Page 6*







### BAGGAGE COMPARTMENT

Fully carpeted baggage compartment sealed by the insulated aluminum doors which are supported by gas struts for easy access.

### LOW E GLASS

All windows include coated Low "E" glass to reflect heat wave effectively.  
*See Climate Guard on Page 6*

### SUNGUARD FLEXROOF

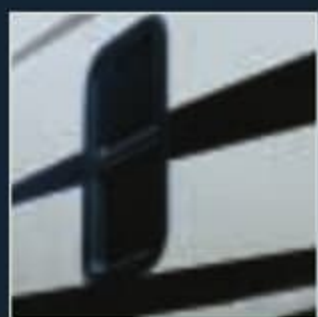
The Empress features an exceptionally durable Filon embossed seamless Sunguard® flexroof.





### BAGGAGE COMPARTMENT

Fully carpeted baggage compartment sealed by the insulated aluminum doors which are supported by gas struts for easy access.



### LOW E GLASS

All windows include coated Low "E" glass to reflect heat wave effectively.  
*See Climate Guard on Page 6*



### SUNGUARD FLEXROOF


The Empress features an exceptionally durable Filon embossed seamless Sunguard® flexroof.

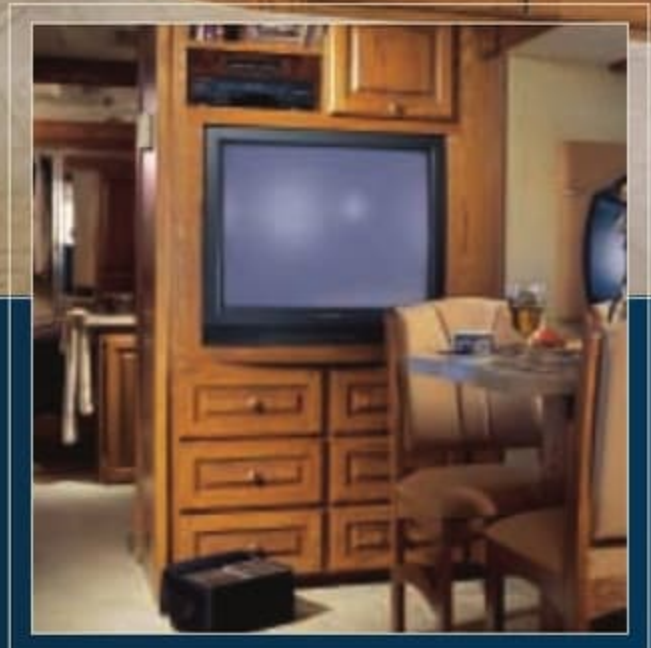


# THE SPACE YOU NEED

Commanding elegance and prestige inside and out, the Empress was developed with every luxury in mind. Thirty eight feet and equipped with all the features, options, and amenities you could wish for, the glorious Empress is as complete as it is beautiful. The Empress has been designed to be the best motorhome on the road, bar none! This impressive and formidable coach turns heads on and off the road, its lavish interior enhanced in every possible way to make you feel right at home. Uncompromising attention to detail and elegant style put the Empress in a class of its own.



 For more information on the Empress's features, visit our website at [www.tripleev.com](http://www.tripleev.com)




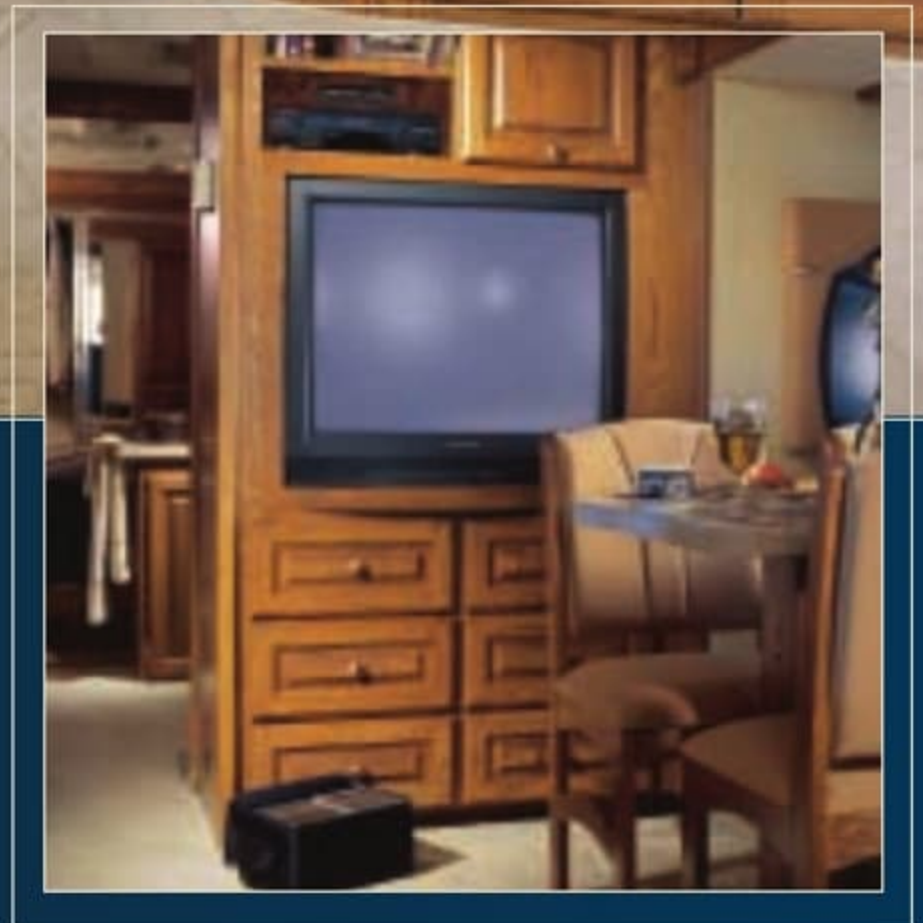


# THE SPACE YOU NEED

Commanding elegance and prestige inside and out, the Empress was developed with every luxury in mind. Thirty eight feet and equipped with all the features, options, and amenities you could wish for, the glorious Empress is as complete as it is beautiful. The Empress has been designed to be the best motorhome on the road, bar none! This impressive and formidable coach turns heads on and off the road, its lavish interior enhanced in every possible way to make you feel right at home. Uncompromising attention to detail and elegant style put the Empress in a class of its own.



 For more information on the Empress's features, visit our website at [www.tripleerv.com](http://www.tripleerv.com)





# THE LOOK YOU WANT

Along with your choice of three floorplans and a host of options, choose one of three distinct interior design schemes, each with a complementary exterior paint treatment.

Selected by a group of professionals, the combinations skillfully coordinate upholstery, carpeting, and window treatments.



OAK COLOUR: CHERRY NUTMEG



MAPLE COLOUR: GOLDEN MAPLE

## GOLDEN WILLOW



STANDARD PAINT



FULL BODY PAINT OPTION

## MYSTIC DUNES



STANDARD PAINT



FULL BODY PAINT OPTION

## JEWELLED AMBER



STANDARD PAINT



FULL BODY PAINT OPTION



# THE LOOK YOU WANT

Along with your choice of three floorplans and a host of options, choose one of three distinct interior design schemes, each with a complementary exterior paint treatment.

Selected by a group of professionals, the combinations skillfully coordinate upholstery, carpeting, and window treatments.



OAK COLOUR: CHERRY NUTMEG



MAPLE COLOUR: GOLDEN MAPLE

## GOLDEN WILLOW



STANDARD PAINT



FULL BODY PAINT OPTION

## MYSTIC DUNES



STANDARD PAINT



FULL BODY PAINT OPTION

## JEWELLED AMBER



STANDARD PAINT



FULL BODY PAINT OPTION



# ALWAYS MORE

## ATTENTION TO DETAIL

Every room in the Empress boasts subtle touches that contribute to a deluxe living environment:

- The full service kitchen has beautiful SOLID SURFACE countertops and a brushed finished telescoping faucet;
- The five star sleeping quarters feature full length mirrored closet doors and a residential quality queen size mattress.
- The spacious bath area has stylish fixtures and a garden tub or an optional neo-angle shower.

From the skylights right down to the ceramic floor tile, you'll discover thoughtful and elegant features at every opportunity - resulting in a truly outstanding final product.

 For a virtual tour of the Empress, visit our website at [www.tripleerv.com](http://www.tripleerv.com)



Choose the optional touch of a button driver or passenger sunvisor.



For added convenience, you'll appreciate the driver side entry/exit door.



Long road trips require all the amenities, even an optional compact washer/dryer.




# ALWAYS MORE

## ATTENTION TO DETAIL

Every room in the Empress boasts subtle touches that contribute to a deluxe living environment:

- The full service kitchen has beautiful SOLID SURFACE countertops and a brushed finished telescoping faucet;
- The five star sleeping quarters feature full length mirrored closet doors and a residential quality queen size mattress.
- The spacious bath area has stylish fixtures and a garden tub or an optional neo-angle shower.

From the skylights right down to the ceramic floor tile, you'll discover thoughtful and elegant features at every opportunity - resulting in a truly outstanding final product.

 For a virtual tour of the Empress, visit our website at [www.tripleerv.com](http://www.tripleerv.com)



Choose the optional touch of a button driver or passenger sunvisor.



For added convenience, you'll appreciate the driver side entry/exit door.



Long road trips require all the amenities, even an optional compact washer/dryer.



# ROOM TO SPARE

## SPACE SOLUTIONS

The Empress is equipped with extensive storage capacity so you're not limited as to what to bring along or buy en route. Golf clubs, barbeques, fishing gear, umbrellas, or extra chairs will fit easily and gas strut supported baggage doors add to your convenience.



Interior space has been carefully considered as well. The entry steps are hidden with a slide-out air operated panel to add valuable square footage.



Another enhanced feature is the handy slide-out generator and battery tray compartment which allows for easy access and serviceability.



The contoured automotive style dashboard makes for greater comfort on longer trips.



New for 2003 - a big button radio which allows for quick visual adjustments.





# ROOM TO SPARE

## SPACE SOLUTIONS

The Empress is equipped with extensive storage capacity so you're not limited as to what to bring along or buy en route. Golf clubs, barbeques, fishing gear, umbrellas, or extra chairs will fit easily and gas strut supported baggage doors add to your convenience.



Interior space has been carefully considered as well. The entry steps are hidden with a slide-out air operated panel to add valuable square footage.



Another enhanced feature is the handy slide-out generator and battery tray compartment which allows for easy access and serviceability.



The contoured automotive style dashboard makes for greater comfort on longer trips.



New for 2003 - a big button radio which allows for quick visual adjustments.



# QUALITY CONSTRUCTION

WE TAKE PRIDE IN ENSURING THE FOUNDATION OF THE EMPRESS IS AS SOUND AS THE INTERIOR IS ELEGANT.

The major considerations in building a top quality motorhome are long lasting beauty coupled with the ability to stand up to any weather conditions. The coach is basically an aluminium and steel framed structure with vacuum bonded gelcoat fiberglass side walls and a domed Sunguard FRP Flexroof.



## Floor (Exterior to Interior)

1. One Piece Woven Poly Propylene Underbelly
2. 3/8" Plywood
3. Tubular Steel Framing (Welded)
4. Styrofoam Filled Wall Support Plates
5. 1" Block Styrofoam Insulation
6. 1/2" Plywood
7. Carpet Underlay
8. Carpeting (Floor covering)

## Sidewalls (Exterior to Interior)

1. Seamless Fiberglass Exterior
2. Luaun Structural Backer
3. Aluminium Framing (Welded)
4. Styrofoam Filled Floor and Roof Plate
5. 1" Block Styrofoam Insulation
6. 1/2" Styrofoam Thermal Break Insulation
7. Interior Decorative Luaun Wall Panels

## Roof (Exterior to Interior)

1. Domed Sunguard FRP Flexroof
2. Luaun Backer
3. Aluminium Roof Truss
4. Styrofoam Filled Roof Truss Supports
5. 1 1/2" Block Styrofoam Insulation
6. Enclosed/Insulated Climate Control Ducting
7. 2" Block Styrofoam Thermal Break Insulation
8. 3/8" Plywood
9. One Piece Headliner

# CLIMATEGUARD

## INTERIOR COMFORT AND EXTERIOR PROTECTION

Born of our northern heritage, Triple E's exclusive Climate Guard® system is quite simply the best interior comfort and exterior protection package available in the recreational vehicle industry today.

The Climate Guard® System has been developed with today's motorhome enthusiast in mind. It provides year round climate controlled comfort for passengers, as well as built in protection for the motorhome itself, ensuring years of trouble free operation and enjoyment.

### INTERIOR COMFORT

- Two Dometic® roof air conditioners ducted front to rear to control the temperature throughout the coach.
- High output chassis air conditioner for traveling comfort.
- Electronic ignition furnace designed to maintain requested interior temperatures in extreme exterior temperatures.
- High output chassis heater to allow for quick windshield defrost.
- Two rear auxiliary automotive heaters complete with electric valve for comfort throughout the coach during travel as well as heating the fresh water and holding tank compartments.
- Vacuum bonded aluminum framed insulated sidewall and roof construction for high strength and maintained warmth throughout the coach.
- Thermal barrier window system which combats condensation in the coach by providing a thermal break in the aluminum main frame. This feature in the dual pane window impedes the transfer of cold through the frame by using an insulating material thereby making the interior of the window warmer and less subject to condensation.
- All windows are coated "Low E" glass which in summer prevents outdoor long-wave heat energy from entering the coach by reflecting back outside. In winter, indoor long-wave heat energy is reflected back into the coach keeping the coach warm.
- Insulated vent covers to provide superior insulation for the fantastic fans and roof vents.

### EXTERIOR PROTECTION

- Scratch and hail resistant gel coat fiberglass sidewalls with all weather exterior finish, easy to maintain, will not rust, pit or fade.
- Domed, seamless, insulated Filon® embossed Sunguard® flexroof to promote quick water run off and ease of maintenance.
- Urethane undercoating to protect against dust and moisture and reduces stone and road noise.
- Enclosed, insulated and heated fresh water and holding tanks assuring you of extreme cold climate performance for your plumbing system. The tanks are heated from two different sources: the motorhome's ducted furnace while parked or the rear auxiliary heater when travelling.
- Winterization System complete with potable antifreeze pickup reservoirs. This system allows you to easily drain your tanks and fill the water lines with antifreeze to prevent freeze up.
- Steel, Insulated and sealed firewall to protect the driver and passenger from the outside elements.
- Additional 1/2" thermal break insulation beyond the standard 1" styrofoam block insulation separating the climate controlled interior from the outside elements.



See for yourself how spacious the Empress is. Take a virtual tour at [www.tripleerv.com](http://www.tripleerv.com).



# QUALITY CONSTRUCTION

WE TAKE PRIDE IN ENSURING THE FOUNDATION OF THE EMPRESS IS AS SOUND AS THE INTERIOR IS ELEGANT.

The major considerations in building a top quality motorhome are long lasting beauty coupled with the ability to stand up to any weather conditions. The coach is basically an aluminium and steel framed structure with vacuum bonded gelcoat fiberglass side walls and a domed Sunguard FRP Flexroof.



## Floor (Exterior to Interior)

1. One Piece Woven Poly Propylene Underbelly
2. 3/8" Plywood
3. Tubular Steel Framing (Welded)
4. Styrofoam Filled Wall Support Plates
5. 1" Block Styrofoam Insulation
6. 1/2" Plywood
7. Carpet Underlay
8. Carpeting (Floor covering)

## Sidewalls (Exterior to Interior)

1. Seamless Fiberglass Exterior
2. Luaun Structural Backer
3. Aluminium Framing (Welded)
4. Styrofoam Filled Floor and Roof Plate
5. 1" Block Styrofoam Insulation
6. 1/2" Styrofoam Thermal Break Insulation
7. Interior Decorative Luaun Wall Panels

## Roof (Exterior to Interior)

1. Domed Sunguard FRP Flexroof
2. Luaun Backer
3. Aluminium Roof Truss
4. Styrofoam Filled Roof Truss Supports
5. 1 1/2" Block Styrofoam Insulation
6. Enclosed/Insulated Climate Control Ducting
7. 2" Block Styrofoam Thermal Break Insulation
8. 3/8" Plywood
9. One Piece Headliner

# CLIMATEGUARD

## INTERIOR COMFORT AND EXTERIOR PROTECTION

Born of our northern heritage, Triple E's exclusive Climate Guard® system is quite simply the best interior comfort and exterior protection package available in the recreational vehicle industry today.

The Climate Guard® System has been developed with today's motorhome enthusiast in mind. It provides year round climate controlled comfort for passengers, as well as built in protection for the motorhome itself, ensuring years of trouble free operation and enjoyment.

### INTERIOR COMFORT

- Two Dometic® roof air conditioners ducted front to rear to control the temperature throughout the coach.
- High output chassis air conditioner for traveling comfort.
- Electronic ignition furnace designed to maintain requested interior temperatures in extreme exterior temperatures.
- High output chassis heater to allow for quick windshield defrost.
- Two rear auxiliary automotive heaters complete with electric valve for comfort throughout the coach during travel as well as heating the fresh water and holding tank compartments.
- Vacuum bonded aluminum framed insulated sidewall and roof construction for high strength and maintained warmth throughout the coach.
- Thermal barrier window system which combats condensation in the coach by providing a thermal break in the aluminum main frame. This feature in the dual pane window impedes the transfer of cold through the frame by using an insulating material thereby making the interior of the window warmer and less subject to condensation.
- All windows are coated "Low E" glass which in summer prevents outdoor long-wave heat energy from entering the coach by reflecting back outside. In winter, indoor long-wave heat energy is reflected back into the coach keeping the coach warm.
- Insulated vent covers to provide superior insulation for the fantastic fans and roof vents.

### EXTERIOR PROTECTION

- Scratch and hail resistant gel coat fiberglass sidewalls with all weather exterior finish, easy to maintain, will not rust, pit or fade.
- Domed, seamless, insulated Filon® embossed Sunguard® flexroof to promote quick water run off and ease of maintenance.
- Urethane undercoating to protect against dust and moisture and reduces stone and road noise.
- Enclosed, insulated and heated fresh water and holding tanks assuring you of extreme cold climate performance for your plumbing system. The tanks are heated from two different sources: the motorhome's ducted furnace while parked or the rear auxiliary heater when travelling.
- Winterization System complete with potable antifreeze pickup reservoirs. This system allows you to easily drain your tanks and fill the water lines with antifreeze to prevent freeze up.
- Steel, Insulated and sealed firewall to protect the driver and passenger from the outside elements.
- Additional 1/2" thermal break insulation beyond the standard 1" styrofoam block insulation separating the climate controlled interior from the outside elements.



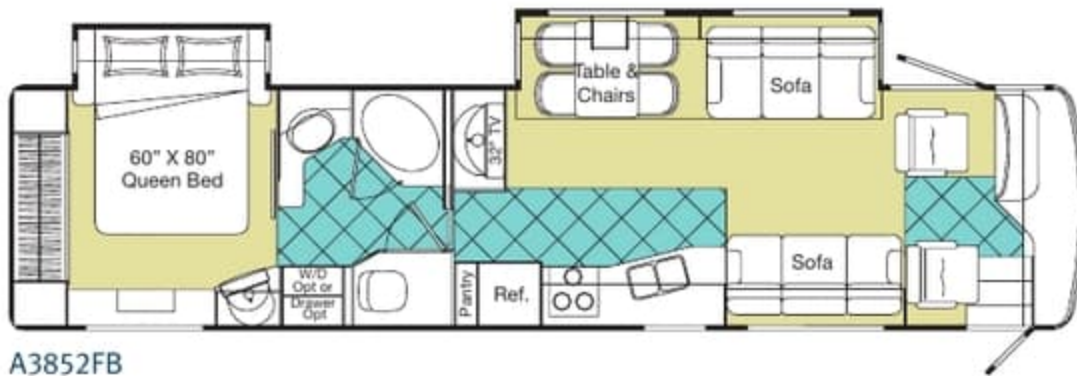
See for yourself how spacious the Empress is. Take a virtual tour at [www.tripleerv.com](http://www.tripleerv.com).



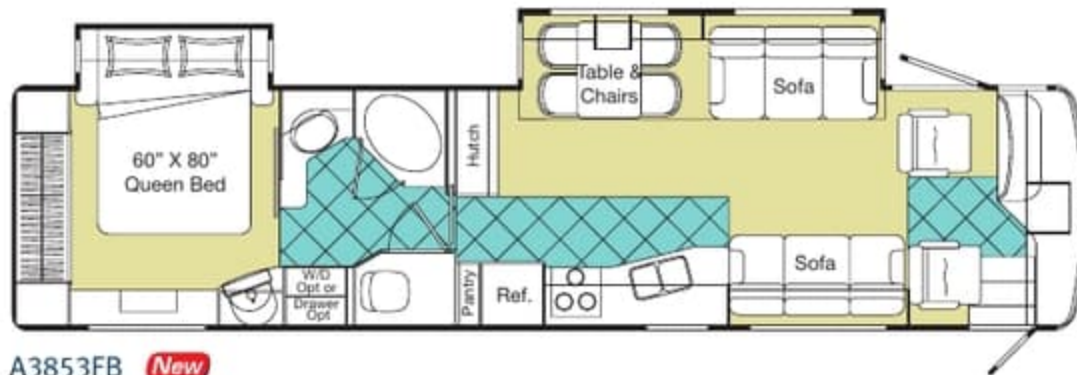
# FLOORPLANS



A3851GB **New**



A3852FB



A3853FB **New**



**New**  
New for  
2003

Product improvement is a continuing process at Triple E Recreational Vehicles. Thus we reserve the right to change specifications on any or all products without prior notice; errors and omissions excepted. Triple E Recreational Vehicles is under no obligation to undertake modification to units manufactured prior to changes on specifications.

**NOTE: Please see your dealer for weights of factory installed options.**

# SPECIFICATIONS

	A3851GB	A3852FB	A3853FB
CHASSIS: FREIGHTLINER XC SERIES ENGINE: 330HP TURBO CATERPILLAR DIESEL			
GVWR-LBS(KG)	29410(13388)	29410(13388)	29410(13388)
UVW-LBS(KG)	24118(10938)	24264(11029)	24211(10980)
NCC-LBS(KG)	6882(3121)	6736(3062)	6789(3079)
WHEELBASE-IN(MM)	252"(6401)	252"(6401)	252"(6401)
LENGTH-FT(MM)	38'6"(11734)	38'6"(11734)	38'6"(11734)
WIDTH-FT(MM)	8'4"(2534)	8'4"(2534)	8'4"(2534)
HEIGHT INCL.A/C-FT(MM)	12' 3"(3734)	12' 3"(3734)	12' 3"(3734)
**WATER TANK CAP.-GAL(L)	102(386)	102(386)	102(386)
HOLDING TANK CAP GREY.-GAL(L)	57(216)	57(216)	57(216)
HOLDING TANK CAP. BLACK-GAL(L)	57(216)	57(216)	57(216)
FUEL CAP.-GAL(L)	100(379)	100(379)	100(379)
PROPANE CAP.-GAL(L)	32(121)	32(121)	32(121)
<b>**-INCLUDES 10GAL WATER HEATER</b>			

The caterpillar 330 horsepower turbo diesel gives you the power you need.



## GVWR

GROSS VEHICLE WEIGHT RATING means the maximum permissible weight of this motorhome. The GVWR is equal to or greater than the sum of the unloaded vehicle weight (UVW) plus the net carrying capacity (NCC).

## UVW

UNLOADED VEHICLE WEIGHT means the weight of the motorhome as built at the factory with full fuel, engine oil, and coolants. The UVW does not include cargo, fresh water, LP gas, occupants, factory or dealer installed accessories.

## NCC

NET CARRYING CAPACITY means the maximum weight of all occupants, including the driver, personal belongings, food, fresh water, LP gas, tools, tongue weight of towed vehicle, factory and dealer installed accessories, etc., that can be carried by this motorhome. (NCC is equal to or less than GVWR minus UVW.)

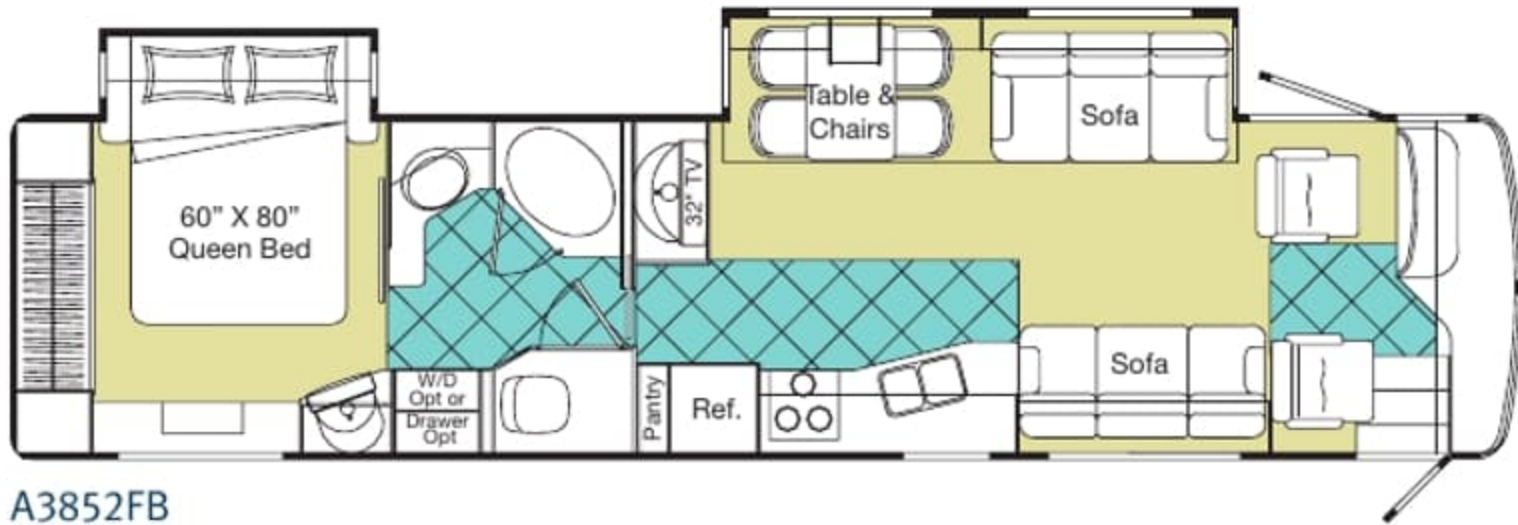
**NOTE: Please see your dealer for weights of factory installed options.**



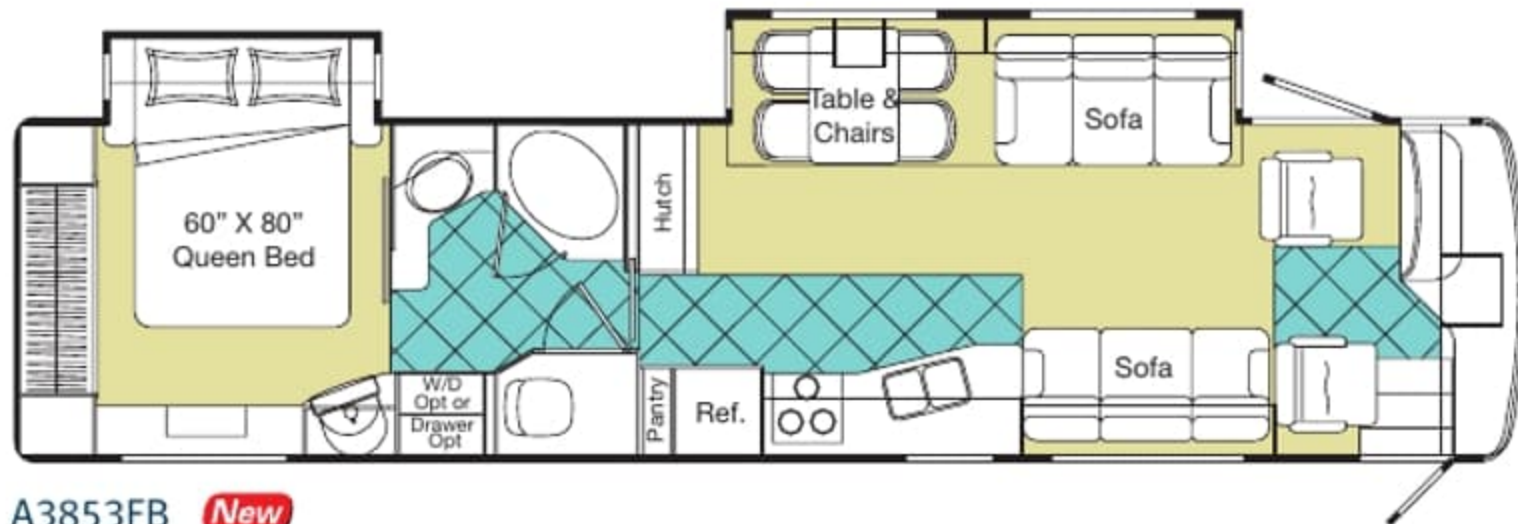
# FLOORPLANS



A3851GB **New**



A3852FB



A3853FB **New**

 Carpet

 Ceramic Tile

 New for 2003

Product improvement is a continuing process at Triple E Recreational Vehicles. Thus we reserve the right to change specifications on any or all products without prior notice; errors and omissions excepted. Triple E Recreational Vehicles is under no obligation to undertake modification to units manufactured prior to changes on specifications.

**NOTE: Please see your dealer for weights of factory installed options.**

# SPECIFICATIONS

	A3851GB	A3852FB	A3853FB
CHASSIS: FREIGHTLINER XC SERIES ENGINE: 330HP TURBO CATERPILLAR DIESEL			
GVWR-LBS(KG)	29410(13388)	29410(13388)	29410(13388)
UVW-LBS(KG)	24118(10938)	24264(11029)	24211(10980)
NCC-LBS(KG)	6882(3121)	6736(3062)	6789(3079)
WHEELBASE-IN(MM)	252"(6401)	252"(6401)	252"(6401)
LENGTH-FT(MM)	38'6"(11734)	38'6"(11734)	38'6"(11734)
WIDTH-FT(MM)	8'4"(2534)	8'4"(2534)	8'4"(2534)
HEIGHT INCL.A/C-FT(MM)	12' 3"(3734)	12' 3"(3734)	12' 3"(3734)
**WATER TANK CAP.-GAL(L)	102(386)	102(386)	102(386)
HOLDING TANK CAP GREY.-GAL(L)	57(216)	57(216)	57(216)
HOLDING TANK CAP. BLACK-GAL(L)	57(216)	57(216)	57(216)
FUEL CAP.-GAL(L)	100(379)	100(379)	100(379)
PROPANE CAP.-GAL(L)	32(121)	32(121)	32(121)
<b>**-INCLUDES 10GAL WATER HEATER</b>			

The caterpillar 330 horsepower turbo diesel gives you the power you need.



### GVWR

GROSS VEHICLE WEIGHT RATING means the maximum permissible weight of this motorhome. The GVWR is equal to or greater than the sum of the unloaded vehicle weight (UVW) plus the net carrying capacity (NCC).

### UVW

UNLOADED VEHICLE WEIGHT means the weight of the motorhome as built at the factory with full fuel, engine oil, and coolants. The UVW does not include cargo, fresh water, LP gas, occupants, factory or dealer installed accessories.

### NCC

NET CARRYING CAPACITY means the maximum weight of all occupants, including the driver, personal belongings, food, fresh water, LP gas, tools, tongue weight of towed vehicle, factory and dealer installed accessories, etc., that can be carried by this motorhome. (NCC is equal to or less than GVWR minus UVW.)

**NOTE: Please see your dealer for weights of factory installed options.**



S = Standard    O = Option    **New** New for 2002

# STANDARDS AND OPTIONS

A3851GB

A3852FB

A3853FB

A3851GB

A3852FB

A3853FB

## VEHICULAR

Air Brakes - c/w Slack Adjusters	S	S	S
Air Conditioner - Chassis	S	S	S
Air Horns	S	S	S
Air Suspension - c/w Bilstein Shock Absorbers	S	S	S
Alternator - 160 Amp	S	S	S
Block Heater (1000 W) with Switch in Bedroom	S	S	S
Bumpers - Integrated Fiberglass - Steel Reinforced	S	S	S
<b>New</b> Chassis - Freightliner c/w Caterpillar 330 HP Turbo Diesel (XC Series) Raised Rail Side Radiator - GVWR 29,410 lbs	S	S	S
Compass/Thermometer - Dash Mounted Directional Compass with Exterior Temperature Readout	S	S	S
Cruise Control	S	S	S
Door - Driver Door c/w Power Window	S	S	S
Exhaust Brake	S	S	S
Fans - Chrome Cockpit Ventilating with Dash Switch	S	S	S
Fuel Fill - Concealed Locking Fuel Fill Access On Both Sides	S	S	S
<b>New</b> Headlights - Styled with Xenon Bulbs	S	S	S
Hitch - Trailer Hitch Receiver w/ wiring and plug - Class III	S	S	S
IFS - Independent Front Suspension Upgrade (Increases GVWR to 31,000 lbs, Tire Upgrade to 275/80R22.5XZE )	O	O	O
Jacks - Automatic HWH Levelling System c/w Auto Air Dump	S	S	S
Light - High Mount Stoplight - LED Long Life	S	S	S
Lights - Halogen Automotive Driving Lights	S	S	S
Mats - Driver/Passenger Floor mats	S	S	S
<b>New</b> Mirrors - Heated Remote Chrome Power Mirrors	S	S	S
<b>New</b> Mud Guard - Monogrammed Triple E Rear Mudguard (Stainless Steel on Rubber)	O	O	O
Rust Protection	O	O	O
Steering Wheel - with Leather Cover, VIP Controls include			
Wiper and Washer Tilt/Telescopic	S	S	S
Switch - Battery Selector for Radio	S	S	S
Switch - Battery Boost (Coach to Chassis Batteries)	S	S	S
Tires - Michelin Radial 255/80R22.5XRV	S	S	S
Transmission - Allison 3000 MH Six Speed Automatic c/w Lock Up	S	S	S
Transmission Cooler	S	S	S
Undercoating - Automotive Type	S	S	S
Wheels - Alcoa Aluminium	S	S	S
Wipers - Wet Arm Windshield Wipers c/w Intermittent Function	S	S	S

## CONSTRUCTION

Baggage Doors - Aluminium Baggage Doors c/w Gas Struts and Slam Latches	S	S	S
Fiberglass Molded Front & Rear Mask	S	S	S
Lined and Lighted Baggage Compartments	S	S	S
<b>New</b> Roof - Domed Sunguard® FRP Flexroof	S	S	S
Steel Cab Floor, Firewall and Dash Structure	S	S	S
Vacuum Bonded Aluminium Framed Insulated Sidewall & Roof Construction With Thermal Break	S	S	S
Vacuum Bonded Gel Coat Fiberglass Sidewalls	S	S	S
Vacuum Bonded Steel Framed Insulated Floor Construction	S	S	S
Windows - Thermal Barrier Window System with Low E Coating	S	S	S

## COACH EXTERIOR

Door - Screened Entry Door with Deadbolt Lock	S	S	S
Exterior Shower	S	S	S
Graphics - Painted Exterior Graphics	S	S	S
Handle - Entry & Driver Door Assist Handles (Interior Mounted)	S	S	S
Ladder - Exterior Ladder c/w Detachable Lower Section	O	O	O
Lights - Deluxe Patio Lights (2)	S	S	S
Lights - Docking Lamps (2 Side, 2 Rear)	S	S	S
Paint - Full Body Exterior Paint with Clear Coat	O	O	O
Step - Electric Retractable Entry Step	S	S	S

## COACH INTERIOR

Bedspread - Decorative Bedspread c/w Throw Pillows	S	S	S
Blinds - Side Driver & Passenger Roller Blinds	S	S	S
Cabinetry - "Golden Maple" Cabinetry with Maple Fridge Insert	O	O	O
Cabinetry - Solid Oak Cabinet Face Frames and Paneling	S	S	S
Ceiling - Domed with Automotive "Soft Touch" Headliner	S	S	S
Cover - Pneumatic Powered Front Step Cover	S	S	S
Covers - Insulated Vent Covers	O	O	O
Detectors - Electronic Smoke, LP and CO Detectors	S	S	S
Doors - Sculptured Solid Oak Panel Cabinet Doors	S	S	S
Drawers - Dual Roller Glide Drawers c/w Travel Lock	S	S	S
Drawers - Slide Out Drawer Option in Washer/Dryer Cabinet (N/A with Washer/Dryer Option)	O	O	O
Fire Extinguisher - Dry Chemical	S	S	S
<b>New</b> Flooring - Ceramic Tile in Entrance Area	S	S	S
Headboard - Fabric Wrapped	S	S	S
Latches - Snap Latches on all Cabinet Doors	S	S	S
Lighting - Courtesy Floor Lamps	S	S	S
Safe - Keylock Safebox	S	S	S
Shades - Day/Night Pleated c/w Bedroom Blackout	S	S	S
Skylight - in Living Area	O	O	O
Slide Out - Bed Slide Out with Rear Wardrobe and Make Up Table	S	S	S
Storage - Easy Under Bed Storage/Engine Access c/w Gas Struts	S	S	S
Sun Visor - Power Driver's Sun Visor	O	O	O
Sun Visor - Power Passenger's Sun Visor	O	O	O
Tray - Dash Mounted Computer Tray	O	O	O

## FURNITURE

Booth Dinette - Booth Dinette With Slide Out Drawers and Solid Surface Pedestal Mount Table	O	O	O
Chair - Ultra Leather Recliner with Refreshment Center c/w Flip Table			
In Lieu of Ultra Leather Easy Bed on Passenger Side	O	O	O
<b>New</b> Hide A Bed - Cloth Hide a Bed on Drivers Side with Air Coil Mattress c/w 110V Air Pump (Available with Recliner Option Only)	-	O	O
Hide A Bed - Ultra Leather Hide a Bed on the Driver's Side (Contrasting Color) c/w 110V Air Pump (Available with Recliner Option Only)	-	O	O
Magic Bed - Cloth Magic Bed on Driver's Side	O	-	-
Magic Bed - Ultra Leather Magic Bed On Drivers Side (Contrasting Color)	O	-	-
Mattress - Residential Quality Queen Bed (60" x 80")	S	S	S
Mattress - Upgrade	O	O	O



S = Standard    O = Option    **New** New for 2002

# STANDARDS AND OPTIONS

A3851GB

A3852FB

A3853FB

A3851GB

A3852FB

A3853FB

## VEHICULAR

Air Brakes - c/w Slack Adjusters	S	S	S
Air Conditioner - Chassis	S	S	S
Air Horns	S	S	S
Air Suspension - c/w Bilstein Shock Absorbers	S	S	S
Alternator - 160 Amp	S	S	S
Block Heater (1000 W) with Switch in Bedroom	S	S	S
Bumpers - Integrated Fiberglass – Steel Reinforced	S	S	S
<b>New</b> Chassis – Freightliner c/w Caterpillar 330 HP Turbo Diesel (XC Series) Raised Rail Side Radiator – GVWR 29,410 lbs	S	S	S
Compass/Thermometer - Dash Mounted Directional Compass with Exterior Temperature Readout	S	S	S
Cruise Control	S	S	S
Door - Driver Door c/w Power Window	S	S	S
Exhaust Brake	S	S	S
Fans - Chrome Cockpit Ventilating with Dash Switch	S	S	S
Fuel Fill - Concealed Locking Fuel Fill Access On Both Sides	S	S	S
<b>New</b> Headlights - Styled with Xenon Bulbs	S	S	S
Hitch - Trailer Hitch Receiver w/ wiring and plug - Class III	S	S	S
IFS - Independent Front Suspension Upgrade (Increases GVWR to 31,000 lbs, Tire Upgrade to 275/80R22.5XZE )	O	O	O
Jacks - Automatic HWH Levelling System c/w Auto Air Dump	S	S	S
Light - High Mount Stoplight – LED Long Life	S	S	S
Lights - Halogen Automotive Driving Lights	S	S	S
Mats - Driver/Passenger Floor mats	S	S	S
<b>New</b> Mirrors - Heated Remote Chrome Power Mirrors	S	S	S
<b>New</b> Mud Guard - Monogrammed Triple E Rear Mudguard (Stainless Steel on Rubber)	O	O	O
Rust Protection	O	O	O
Steering Wheel - with Leather Cover, VIP Controls include			
Wiper and Washer Tilt/Telescopic	S	S	S
Switch - Battery Selector for Radio	S	S	S
Switch - Battery Boost (Coach to Chassis Batteries)	S	S	S
Tires - Michelin Radial 255/80R22.5XRV	S	S	S
Transmission - Allison 3000 MH Six Speed Automatic c/w Lock Up	S	S	S
Transmission Cooler	S	S	S
Undercoating - Automotive Type	S	S	S
Wheels - Alcoa Aluminium	S	S	S
Wipers - Wet Arm Windshield Wipers c/w Intermittent Function	S	S	S

## CONSTRUCTION

Baggage Doors - Aluminium Baggage Doors c/w Gas Struts and Slam Latches	S	S	S
Fiberglass Molded Front & Rear Mask	S	S	S
Lined and Lighted Baggage Compartments	S	S	S
<b>New</b> Roof - Domed Sunguard® FRP Flexroof	S	S	S
Steel Cab Floor, Firewall and Dash Structure	S	S	S
Vacuum Bonded Aluminium Framed Insulated Sidewall & Roof Construction With Thermal Break	S	S	S
Vacuum Bonded Gel Coat Fiberglass Sidewalls	S	S	S
Vacuum Bonded Steel Framed Insulated Floor Construction	S	S	S
Windows - Thermal Barrier Window System with Low E Coating	S	S	S

## COACH EXTERIOR

Door - Screened Entry Door with Deadbolt Lock	S	S	S
Exterior Shower	S	S	S
Graphics - Painted Exterior Graphics	S	S	S
Handle - Entry & Driver Door Assist Handles (Interior Mounted)	S	S	S
Ladder - Exterior Ladder c/w Detachable Lower Section	O	O	O
Lights - Deluxe Patio Lights (2)	S	S	S
Lights - Docking Lamps (2 Side, 2 Rear)	S	S	S
Paint - Full Body Exterior Paint with Clear Coat	O	O	O
Step - Electric Retractable Entry Step	S	S	S

## COACH INTERIOR

Bedspring - Decorative Bedspring c/w Throw Pillows	S	S	S
Blinds - Side Driver & Passenger Roller Blinds	S	S	S
Cabinetry - "Golden Maple" Cabinetry with Maple Fridge Insert	O	O	O
Cabinetry - Solid Oak Cabinet Face Frames and Paneling	S	S	S
Ceiling - Domed with Automotive "Soft Touch" Headliner	S	S	S
Cover - Pneumatic Powered Front Step Cover	S	S	S
Covers - Insulated Vent Covers	O	O	O
Detectors - Electronic Smoke, LP and CO Detectors	S	S	S
Doors - Sculptured Solid Oak Panel Cabinet Doors	S	S	S
Drawers - Dual Roller Glide Drawers c/w Travel Lock	S	S	S
Drawers - Slide Out Drawer Option in Washer/Dryer Cabinet (N/A with Washer/Dryer Option)	O	O	O
Fire Extinguisher - Dry Chemical	S	S	S
<b>New</b> Flooring - Ceramic Tile in Entrance Area	S	S	S
Headboard - Fabric Wrapped	S	S	S
Latches - Snap Latches on all Cabinet Doors	S	S	S
Lighting - Courtesy Floor Lamps	S	S	S
Safe - Keylock Safebox	S	S	S
Shades - Day/Night Pleated c/w Bedroom Blackout	S	S	S
Skylight - in Living Area	O	O	O
Slide Out - Bed Slide Out with Rear Wardrobe and Make Up Table	S	S	S
Storage - Easy Under Bed Storage/Engine Access c/w Gas Struts	S	S	S
Sun Visor - Power Driver's Sun Visor	O	O	O
Sun Visor - Power Passenger's Sun Visor	O	O	O
Tray - Dash Mounted Computer Tray	O	O	O

## FURNITURE

Booth Dinette - Booth Dinette With Slide Out Drawers and Solid Surface Pedestal Mount Table	O	O	O
Chair - Ultra Leather Recliner with Refreshment Center c/w Flip Table			
In Lieu of Ultra Leather Easy Bed on Passenger Side	O	O	O
<b>New</b> Hide A Bed - Cloth Hide a Bed on Drivers Side with Air Coil Mattress c/w 110V Air Pump (Available with Recliner Option Only)	-	O	O
Hide A Bed - Ultra Leather Hide a Bed on the Driver's Side (Contrasting Color) c/w 110V Air Pump (Available with Recliner Option Only)	-	O	O
Magic Bed - Cloth Magic Bed on Driver's Side	O	-	-
Magic Bed - Ultra Leather Magic Bed On Drivers Side (Contrasting Color)	O	-	-
Mattress - Residential Quality Queen Bed (60" x 80")	S	S	S
Mattress - Upgrade	O	O	O



	A3851GB	A3852FB	A3853FB
<b>New</b> Seat - Ultra Leather 8 Way Power Seat with Power Foot Rest on Passenger Side	0	0	0
Seat - Ultra Leather Swivel Power Drivers & Passengers Captain Chairs with Integral Seat Belts - 8 Way Power	S	S	S
Sofa - Cloth Easy Bed on Drivers Side	S	S	S
Sofa - Cloth Flexsteel Versaflex Lounger on driver's side	-	0	0
Sofa - Ultra Leather Easy Bed Passenger Side	S	S	S
Sofa - Ultra Leather Versaflex Lounger on Driver's Side (contrasting color)	-	0	0
Table - Solid Oak Wall Mount Table c/w Oak Chairs (Maple if Option Chosen)	S	-	-
Table - Solid Surface Table c/w Oak Chairs (Maple if Option Chosen)	-	S	S
<b>GALLEY FEATURES</b>			
Coffee Maker	S	S	S
Cook top - Recessed Cook Top c/w High Output Sealed Burner	S	S	S
Countertop - Solid Surface Countertop c/w Matching Cutting Board Sink Covers	S	S	S
Cover - Recessed Bi Fold Range Cover	S	S	S
Fan - Thermostatically Controlled Fan in Living Area	S	S	S
Faucets - Deluxe Single Lever Faucet	S	S	S
Flooring - Ceramic Tile Flooring	S	S	S
<b>New</b> Flooring - Thermostatically Controlled Heating Element Under Ceramic Tile in Galley	0	0	0
Micro/Convection Oven - (OTR) c/w 110v Range Hood and Light	S	S	S
Oven - LP Gas Oven	0	0	0
Refrigerator - Dometic® Side by Side 12 cu. Ft. c/w Ice Maker LP/Electric	0	0	0
Refrigerator Inserts - Raised Sculptured Solid Oak Fridge Inserts	S	S	S
Refrigerator - Dometic® Two Door 10 Cu. Ft. c/w Ice Maker, LP/Electric	S	S	S
Sink - Recessed Solid Surface Sink	S	S	S
Water Purifier	S	S	S
<b>LAVATORY</b>			
Countertop - Solid Surface Counter and Basin	S	S	S
Fan - Thermostatically Controlled Fan in Bath	S	S	S
<b>New</b> Fan - Thermostatically Controlled Non Reversible Fan in Toilet Room	S	S	S
Faucet - Deluxe Faucets	S	S	S
Flooring - Ceramic Tile Flooring	S	S	S
Flooring - Thermostatically Controlled Heating Element Under Ceramic Tile in Lavatory	0	0	0
Shower - Neo Angle Fiberglass Enclosed Shower	0	0	0
Skylight - Shower Compartment	S	S	S
Toilet - Aurora China Toilet c/w Water Saver With Sprayer	S	S	S
Tub - Enclosed Fiberglass Garden Tub	S	S	S
Washer/Dryer Prep - for Washer/Dryer option	S	S	S
<b>New</b> Window - with Valance and Venetian Blind in Toilet Room	S	S	S
<b>ENTERTAINMENT</b>			
CB Antenna - includes Coax Lead in under Dash	0	0	0
Master Control - Audio/Video Master Control Switch Box	S	S	S
Pre-wire - Satellite Dish Pre-wire (with 12V Power)	0	0	0
<b>New</b> Stereo - AM/FM Cassette in Dash Stereo w/ Separate 6 Disk CD Changer with Big Buttons - 80 Watt	0	0	0
<b>New</b> Stereo - AM/FM CD in Dash Stereo w/ Big Buttons - 80 Watt	S	S	S
<b>New</b> Stereo - AM/FM CD Stereo c/w 6 Stack in Dash CD Changer w/ Big Buttons - 80 Watt	0	0	0

	A3851GB	A3852FB	A3853FB
<b>New</b> Stereo - DHS Mobile Theatre System with AM/FM CD Stereo with 6 Stack in Dash CD Changer w/ Big Buttons - 80 Watt	0	0	0
Stereo - Exterior AM/FM - CD Stereo with Shielded Speakers	0	0	0
Stereo - Separate AM/FM CD Stereo in Bedroom c/w Alarm	S	S	S
Telephone & Cable TV Hook-up - Exterior	S	S	S
TV - AC 20" Exterior TV in Baggage Compartment c/w Slide-out Tray	0	0	0
TV - AC 20" Color Stereo TV c/w Remote in Bedroom	S	S	S
TV - AC 20" Color Stereo TV c/w Remote in Overhead Console	S	-	S
TV - AC 32" Color Stereo TV c/w Remote in Entertainment Cabinet Rear of Slide Out	-	S	-
TV Antenna - Roof Top Retractable Antenna c/w Booster	S	S	S
VCR - HiFi Video Cassette Recorder	S	S	S
<b>HEATING VENTILATING AND AIR CONDITIONING</b>			
Air Conditioner - Dual Ducted (2) 13,500 BTU	S	S	S
Furnace - 40,000 BTU Central Furnace c/w Electronic Ignition and In Floor Ducting	S	S	S
Heater - Dual Rear Auxiliary Automotive Heaters c/w Electric Valve	S	S	S
<b>ELECTRICAL</b>			
Alarm System c/w 2 Motion Detectors	0	0	0
Batteries - 4 x 6V Deep Cycle Auxiliary Battery c/w Slide Out Battery Tray	S	S	S
Bi Directional Isolator Relay Delay (BIRD) Battery Charging System	S	S	S
<b>New</b> Generator - 5.5 KW Onan Quiet Diesel on Slide Out Tray (Available Late 2002)	0	0	0
<b>New</b> Generator - 6.5 KW Onan LP Gas Marquis (will not start below -8C) with Air Assist Slide Out	0	0	0
Generator - 7.5 KW Onan Quiet Diesel With Air Assist Slide out	0	0	0
Generator Ready Package	S	S	S
Inverter - 2000 Watt Inverter c/w 100 Amp Charger	S	S	S
Panel - 50 Amp Electrical Service c/w Energy Management System	S	S	S
Pre-wire - 110V/12V Receptacles in Baggage Compartment (Freezer Prep)	S	S	S
Pre-wire - for Solar Panel	0	0	0
<b>New</b> Pre-wire For Power Main Awning	S	S	S
Switch - Electronic Battery Disconnect (Coach Batteries)	S	S	S
<b>PLUMBING AND LP SYSTEMS</b>			
Black Tank Flush System	S	S	S
Holder - Swing Out Under Body Sewer Hose Holder	S	S	S
Holding Tanks - Enclosed and Insulated, Dual Heated Waste Holding Tanks	S	S	S
LP Tank - Easy Access Propane Tank	S	S	S
Switch - 3-Way Water Pump Switching	S	S	S
Water Heater - Electronic Ignition Gas/Electric/Motoraid Water Heater (10 Gal)	S	S	S
Water Tank - Enclosed and Insulated, Dual Heated Fresh Water Tank	S	S	S
Winterization System - c/w Potable Antifreeze Pick Up Tank	S	S	S
<b>SYSTEMS</b>			
Central Vacuum - With Outlet in Baggage Compartment	S	S	S
Freezer / Refrigerator - On Slide Out Tray 1.38 Cu Ft (AC/DC)	0	0	0
<b>New</b> Rear-view Camera/Monitor - Color LCD Display Mounted in Dash	S	S	S
Washer/Dryer (vented)	0	0	0
Factory P.D.I.	0	0	0



	A3851GB	A3852FB	A3853FB		A3851GB	A3852FB	A3853FB
<b>New</b> Seat - Ultra Leather 8 Way Power Seat with Power Foot Rest on Passenger Side	0	0	0	<b>New</b> Stereo - DHS Mobile Theatre System with AM/FM CD Stereo with 6 Stack in Dash CD Changer w/ Big Buttons - 80 Watt	0	0	0
Seat - Ultra Leather Swivel Power Drivers & Passengers Captain Chairs with Integral Seat Belts - 8 Way Power	S	S	S	Stereo - Exterior AM/FM - CD Stereo with Shielded Speakers	0	0	0
Sofa - Cloth Easy Bed on Drivers Side	S	S	S	Stereo - Separate AM/FM CD Stereo in Bedroom c/w Alarm	S	S	S
Sofa - Cloth Flexsteel Versaflex Lounger on driver's side	-	0	0	Telephone & Cable TV Hook-up - Exterior	S	S	S
Sofa - Ultra Leather Easy Bed Passenger Side	S	S	S	TV - AC 20" Exterior TV in Baggage Compartment c/w Slide-out Tray	0	0	0
Sofa - Ultra Leather Versaflex Lounger on Driver's Side (contrasting color)	-	0	0	TV - AC 20" Color Stereo TV c/w Remote in Bedroom	S	S	S
Table - Solid Oak Wall Mount Table c/w Oak Chairs (Maple if Option Chosen)	S	-	-	TV - AC 20" Color Stereo TV c/w Remote in Overhead Console	S	-	S
Table - Solid Surface Table c/w Oak Chairs (Maple if Option Chosen)	-	S	S	TV - AC 32" Color Stereo TV c/w Remote in Entertainment Cabinet Rear of Slide Out	-	S	-
<b>GALLEY FEATURES</b>				TV Antenna - Roof Top Retractable Antenna c/w Booster	S	S	S
Coffee Maker	S	S	S	VCR - HiFi Video Cassette Recorder	S	S	S
Cook top - Recessed Cook Top c/w High Output Sealed Burner	S	S	S	<b>HEATING VENTILATING AND AIR CONDITIONING</b>			
Countertop - Solid Surface Countertop c/w Matching Cutting Board Sink Covers	S	S	S	Air Conditioner - Dual Ducted (2) 13,500 BTU	S	S	S
Cover - Recessed Bi Fold Range Cover	S	S	S	Furnace - 40,000 BTU Central Furnace c/w Electronic Ignition and In Floor Ducting	S	S	S
Fan - Thermostatically Controlled Fan in Living Area	S	S	S	Heater - Dual Rear Auxiliary Automotive Heaters c/w Electric Valve	S	S	S
Faucets - Deluxe Single Lever Faucet	S	S	S	<b>ELECTRICAL</b>			
Flooring - Ceramic Tile Flooring	S	S	S	Alarm System c/w 2 Motion Detectors	0	0	0
<b>New</b> Flooring - Thermostatically Controlled Heating Element Under Ceramic Tile in Galley	0	0	0	Batteries - 4 x 6V Deep Cycle Auxiliary Battery c/w Slide Out Battery Tray	S	S	S
Micro/Convection Oven - (OTR) c/w 110v Range Hood and Light	S	S	S	Bi Directional Isolator Relay Delay (BIRD) Battery Charging System	S	S	S
Oven - LP Gas Oven	0	0	0	<b>New</b> Generator - 5.5 KW Onan Quiet Diesel on Slide Out Tray (Available Late 2002)	0	0	0
Refrigerator - Dometic® Side by Side 12 cu. Ft. c/w Ice Maker LP/Electric	0	0	0	<b>New</b> Generator - 6.5 KW Onan LP Gas Marquis (will not start below -8C) with Air Assist Slide Out	0	0	0
Refrigerator Inserts - Raised Sculptured Solid Oak Fridge Inserts	S	S	S	Generator - 7.5 KW Onan Quiet Diesel With Air Assist Slide out	0	0	0
Refrigerator - Dometic® Two Door 10 Cu. Ft. c/w Ice Maker, LP/Electric	S	S	S	Generator Ready Package	S	S	S
Sink - Recessed Solid Surface Sink	S	S	S	Inverter - 2000 Watt Inverter c/w 100 Amp Charger	S	S	S
Water Purifier	S	S	S	Panel - 50 Amp Electrical Service c/w Energy Management System	S	S	S
<b>LAVATORY</b>				Pre-wire - 110V/12V Receptacles in Baggage Compartment (Freezer Prep)	S	S	S
Countertop - Solid Surface Counter and Basin	S	S	S	Pre-wire - for Solar Panel	0	0	0
Fan - Thermostatically Controlled Fan in Bath	S	S	S	<b>New</b> Pre-wire For Power Main Awning	S	S	S
<b>New</b> Fan - Thermostatically Controlled Non Reversible Fan in Toilet Room	S	S	S	Switch - Electronic Battery Disconnect (Coach Batteries)	S	S	S
Faucet - Deluxe Faucets	S	S	S	<b>PLUMBING AND LP SYSTEMS</b>			
Flooring - Ceramic Tile Flooring	S	S	S	Black Tank Flush System	S	S	S
Flooring - Thermostatically Controlled Heating Element Under Ceramic Tile in Lavatory	0	0	0	Holder - Swing Out Under Body Sewer Hose Holder	S	S	S
Shower - Neo Angle Fiberglass Enclosed Shower	0	0	0	Holding Tanks - Enclosed and Insulated, Dual Heated Waste Holding Tanks	S	S	S
Skylight - Shower Compartment	S	S	S	LP Tank - Easy Access Propane Tank	S	S	S
Toilet - Aurora China Toilet c/w Water Saver With Sprayer	S	S	S	Switch - 3-Way Water Pump Switching	S	S	S
Tub - Enclosed Fiberglass Garden Tub	S	S	S	Water Heater - Electronic Ignition Gas/Electric/Motoraid Water Heater (10 Gal)	S	S	S
Washer/Dryer Prep - for Washer/Dryer option	S	S	S	Water Tank - Enclosed and Insulated, Dual Heated Fresh Water Tank	S	S	S
<b>New</b> Window - with Valance and Venetian Blind in Toilet Room	S	S	S	Winterization System - c/w Potable Antifreeze Pick Up Tank	S	S	S
<b>ENTERTAINMENT</b>				<b>SYSTEMS</b>			
CB Antenna - includes Coax Lead in under Dash	0	0	0	Central Vacuum - With Outlet in Baggage Compartment	S	S	S
Master Control - Audio/Video Master Control Switch Box	S	S	S	Freezer / Refrigerator - On Slide Out Tray 1.38 Cu Ft (AC/DC)	0	0	0
Pre-wire - Satellite Dish Pre-wire (with 12V Power)	0	0	0	<b>New</b> Rear-view Camera/Monitor - Color LCD Display Mounted in Dash	S	S	S
<b>New</b> Stereo - AM/FM Cassette in Dash Stereo w/ Separate 6 Disk CD Changer with Big Buttons - 80 Watt	0	0	0	Washer/Dryer (vented)	0	0	0
<b>New</b> Stereo - AM/FM CD in Dash Stereo w/ Big Buttons - 80 Watt	S	S	S	Factory P.D.I.	0	0	0
<b>New</b> Stereo - AM/FM CD Stereo c/w 6 Stack in Dash CD Changer w/ Big Buttons - 80 Watt	0	0	0				



# TRIPLE E QUALITY

A Triple E Empress Motorhome is a combination of first-class materials and quality controlled construction. Built with a solid foundation, integrity is never compromised – inside and out.

Exteriors are virtually maintenance free and abrasion resistant.

Cabinetry is constructed with screws rather than staples to ensure structural integrity and durability. Both strong and moisture repellent, the solid oak doors are a front to ample storage space.

Designer interior decors are a mixture of style and functionality – with quality fabrics developed to handle years of wear while meeting or exceeding flame retardant standards.

All Triple E products are built to CSA (Canadian Standards Association) or RVIA (Recreational Vehicle Industry Association) Standards. Triple E was one of the first RV manufacturers to obtain the ISO 9002 certification – your assurance of the careful construction and high quality materials that are part and parcel of every Triple E Recreational Vehicle.



MAKE SURE YOU VISIT OUR WEBSITE AT [www.tripleerv.com](http://www.tripleerv.com)

Triple E is proud to offer a  
**2 YEAR LIMITED WARRANTY**

on structure as well as most major components.  
Please see your dealer for further details.



This combination of labels assures the purchaser that the manufacturer has met or surpassed CSA-CRVA-RVIA standards covering electrical services, gas services, plumbing services, and vehicular safety.

Empress motorhomes exceed 96 inches in width. In some states, 96 inches is the maximum width of vehicles travelling some or all state roads. It is the responsibility of the owner to be familiar with the road usage laws of the states in which you travel.

## COACH NET

Triple E is a proud partner of Coach Net, an extensive support program that provides complete and fully paid roadside assistance, emergency road service, and special warranty support benefits that follow you throughout Canada and the US. Service is free for the first year of ownership and is available at a nominal fee for subsequent years.

Coach Net's 24-hour Customer Care includes:

- Emergency roadside assistance including tow vehicle
- Toll free technician hotline for operation and service support
- Toll free nationwide service appointment assistance
- Free custom trip routing and color maps
- Warranty service at over 6,800 locations throughout North America
- Benefits such as free jump starts, tire changes, fuel delivery, and lock out service

Brochure pictures may be shown with optional equipment.



P.O. Box 1230, Winkler, MB  
Canada R6W 4C4  
Tel: (204) 325-4361  
Fax: (204) 325-5241  
[www.tripleerv.com](http://www.tripleerv.com)

Experience the Difference



# TRIPLE E QUALITY

A Triple E Empress Motorhome is a combination of first-class materials and quality controlled construction. Built with a solid foundation, integrity is never compromised – inside and out.

Exteriors are virtually maintenance free and abrasion resistant.

Cabinetry is constructed with screws rather than staples to ensure structural integrity and durability. Both strong and moisture repellent, the solid oak doors are a front to ample storage space.

Designer interior decors are a mixture of style and functionality – with quality fabrics developed to handle years of wear while meeting or exceeding flame retardant standards.

All Triple E products are built to CSA (Canadian Standards Association) or RVIA (Recreational Vehicle Industry Association) Standards. Triple E was one of the first RV manufacturers to obtain the ISO 9002 certification – your assurance of the careful construction and high quality materials that are part and parcel of every Triple E Recreational Vehicle.



MAKE SURE YOU VISIT OUR WEBSITE AT [www.tripleerv.com](http://www.tripleerv.com)



P.O. Box 1230, Winkler, MB  
Canada R6W 4C4  
Tel: (204) 325-4361  
Fax: (204) 325-5241  
[www.tripleerv.com](http://www.tripleerv.com)

Experience the Difference

Triple E is proud to offer a  
**2 YEAR LIMITED WARRANTY**

on structure as well as most major components.  
Please see your dealer for further details.



This combination of labels assures the purchaser that the manufacturer has met or surpassed CSA-CRVA-RVIA standards covering electrical services, gas services, plumbing services, and vehicular safety.

Empress motorhomes exceed 96 inches in width. In some states, 96 inches is the maximum width of vehicles travelling some or all state roads. It is the responsibility of the owner to be familiar with the road usage laws of the states in which you travel.

## COACH NET

Triple E is a proud partner of Coach Net, an extensive support program that provides complete and fully paid roadside assistance, emergency road service, and special warranty support benefits that follow you throughout Canada and the US. Service is free for the first year of ownership and is available at a nominal fee for subsequent years.

Coach Net's 24-hour Customer Care includes:

- Emergency roadside assistance including tow vehicle
- Toll free technician hotline for operation and service support
- Toll free nationwide service appointment assistance
- Free custom trip routing and color maps
- Warranty service at over 6,800 locations throughout North America
- Benefits such as free jump starts, tire changes, fuel delivery, and lock out service

Brochure pictures may be shown with optional equipment.