



AMERICAN TRADITION



2004

Explore American Tradition's Features and Benefits.

The Liberty Chassis™ — Enables American Coach to design and manufacture double, triple and quadruple slide-out floor plans. The Liberty Chassis can be paired with your choice of either Spartan or Freightliner options.

Luxurious Driving Experience — Built on the brand new Liberty Chassis™, with four airbags, independent front suspension and adjustable pedals. The coach smoothly glides over the imperfections of the road allowing you to relax and enjoy the ride.

Floor Plans Galore — Choose from double, triple and quadruple slides.

Flexsteel Furniture — Lifetime guaranty on the frame. Quality furniture to match a quality coach. Be it fabric or leather it is hard to match the elegance and comfort of this furniture.

Pneumatic "Air" Lock (Optional) — Unique feature to American Coach at this price point. This feature minimizes air intrusion, door rattle and wind noise. Other manufacturers make their own doors and cannot match the quality and functionality of our entry door made by Avionics.

All New Front and Rear Cap — Elegant yet striking front and rear caps. Design distinguishes the Tradition from all other Diesel motor homes.

More Power — Standard 370 Horsepower Cummins ISL 8.9 Liter engine. 1250 ft. lbs torque at 1200 rpms. This means you can climb hills with ease and feel the motor home GO when you press the gas pedal.

Vacubond Roof — Strong roof structure over 6" thick. Walk on our roof then walk on our top competitor's roof. Ours is solid, theirs is soft.

By Fleetwood — a name you know, a name you trust.



AMERICAN TRADITION



2004

Explore American Tradition's Features and Benefits.

The Liberty Chassis™ — Enables American Coach to design and manufacture double, triple and quadruple slide-out floor plans. The Liberty Chassis can be paired with your choice of either Spartan or Freightliner options.

Luxurious Driving Experience — Built on the brand new Liberty Chassis™, with four airbags, independent front suspension and adjustable pedals. The coach smoothly glides over the imperfections of the road allowing you to relax and enjoy the ride.

Floor Plans Galore — Choose from double, triple and quadruple slides.

Flexsteel Furniture — Lifetime guaranty on the frame. Quality furniture to match a quality coach. Be it fabric or leather it is hard to match the elegance and comfort of this furniture.

Pneumatic "Air" Lock (Optional) — Unique feature to American Coach at this price point. This feature minimizes air intrusion, door rattle and wind noise. Other manufacturers make their own doors and cannot match the quality and functionality of our entry door made by Avionics.

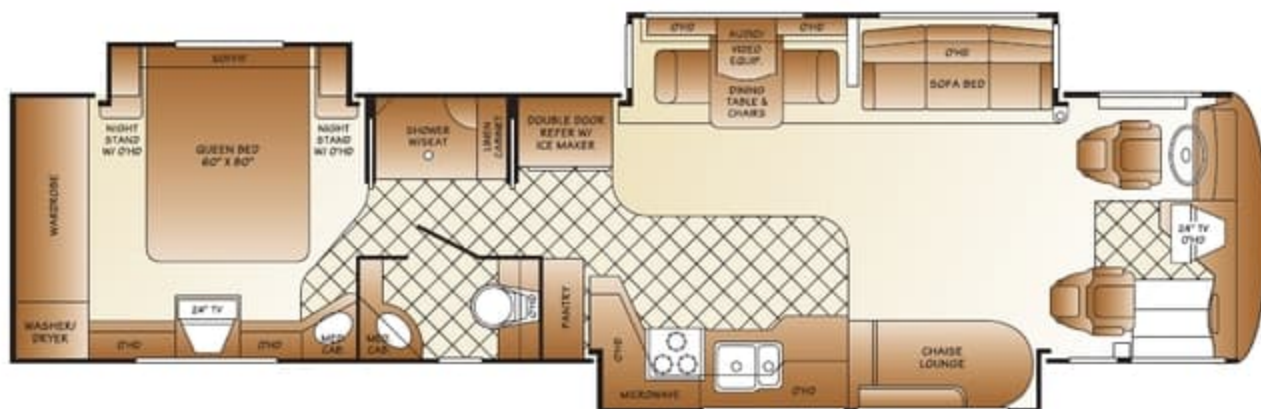
All New Front and Rear Cap — Elegant yet striking front and rear caps. Design distinguishes the Tradition from all other Diesel motor homes.

More Power — Standard 370 Horsepower Cummins ISL 8.9 Liter engine. 1250 ft. lbs torque at 1200 rpms. This means you can climb hills with ease and feel the motor home GO when you press the gas pedal.

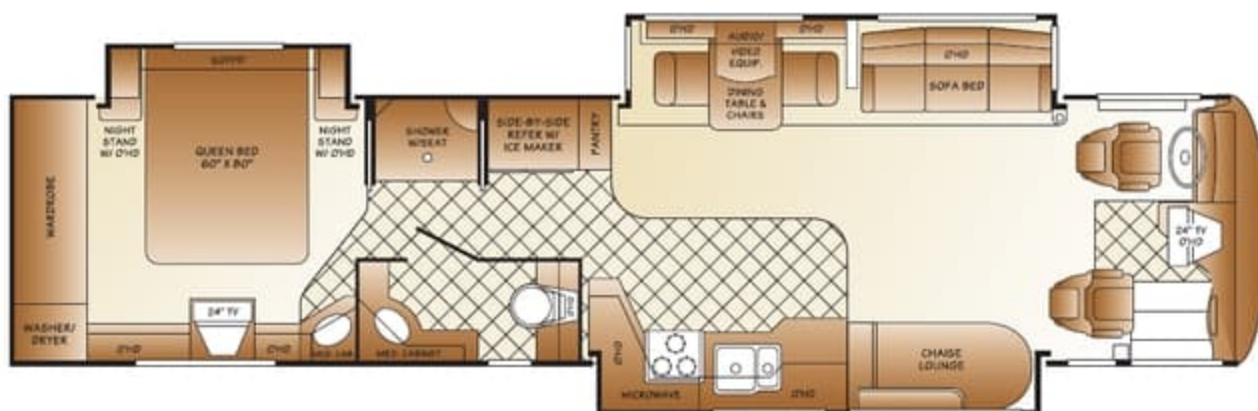
Vacubond Roof — Strong roof structure over 6" thick. Walk on our roof then walk on our top competitor's roof. Ours is solid, theirs is soft.

By Fleetwood — a name you know, a name you trust.

Model 38X

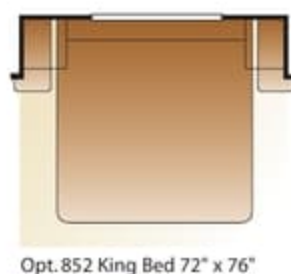


Model 40J



Available Options

AMERICAN
TRADITION



Opt. 852 King Bed 72" x 76"



Opt. 958 Leather
Extra Wide Seat
w/Power Footrest



Opt. 129
Washer/Dryer
Ready



Opt. 891
Full Rear
Ward or
Opt. 897



Opt. 880 Rear
Wall Shirtward
w/Drawers
or Opt. 894



Opt. 630 Doorside Overhead



Opt. 157 Front 32" Plasma TV and
Rear 20" LCD TV Package



Opt. 629 68" Leather
Chaise Lounge



Opt. 632 68" Fabric
Chaise Lounge
(40N and 40V Only)

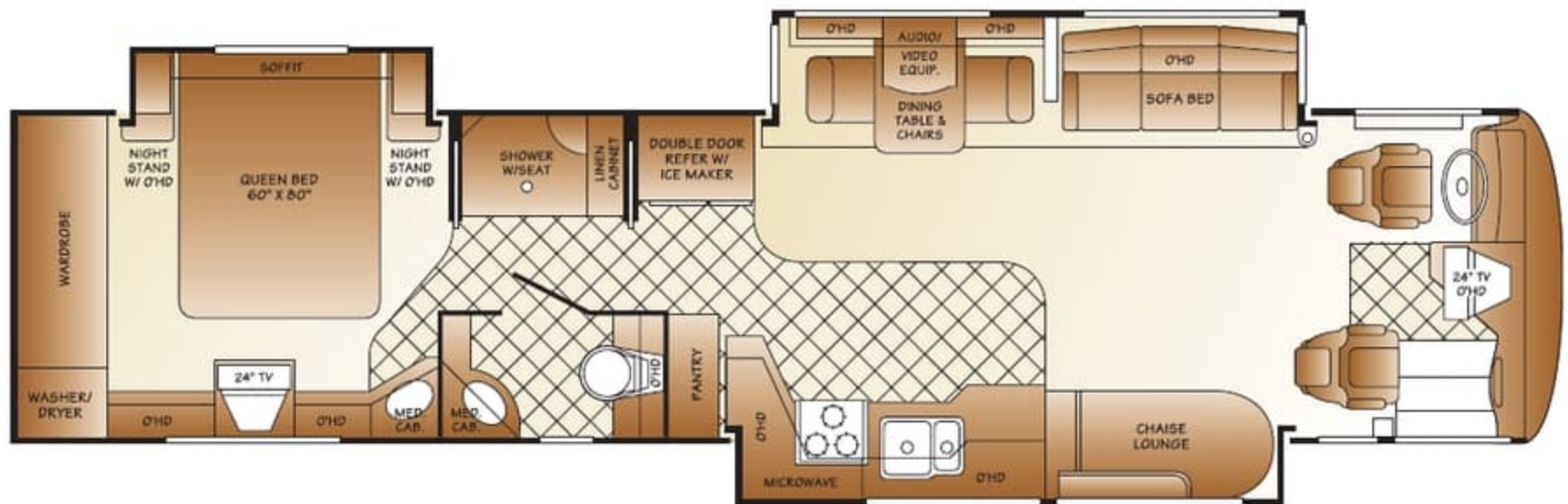


Opt. 157 Dual 32"
Plasma TV Package
(Front End)

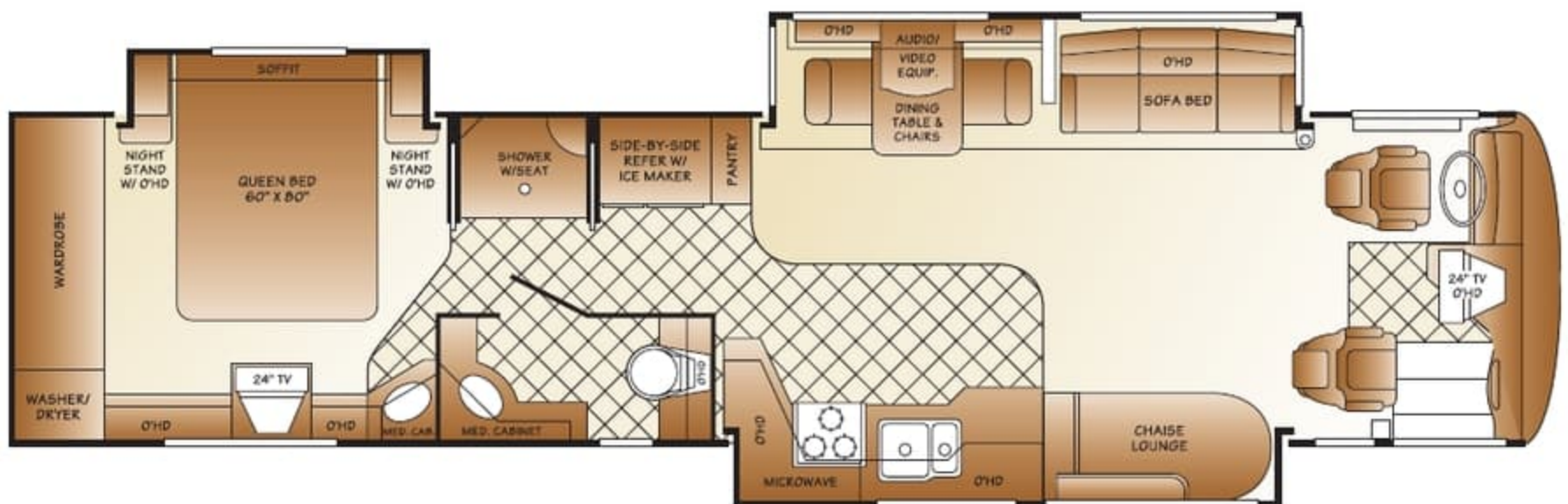


Opt. 631
Fabric
Ottoman

Model 38X

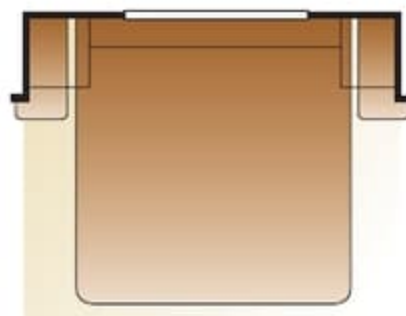


Model 40J



Available Options

AMERICAN
TRADITION



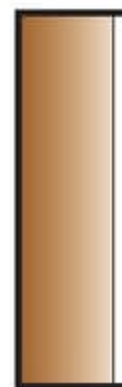
Opt. 852 King Bed 72" x 76"



Opt. 958 Leather
Extra Wide Seat
w/Power Footrest



Opt. 129
Washer/Dryer
Ready



Opt. 891
Full Rear
Ward or
Opt. 897



Opt. 880 Rear
Wall Shirtward
w/Drawers
or Opt. 894



Opt. 630 Doorside Overhead



Opt. 157 Front 32" Plasma TV and
Rear 20" LCD TV Package



Opt. 629 68" Leather
Chaise Lounge



Opt. 632 68" Fabric
Chaise Lounge
(40N and 40V Only)

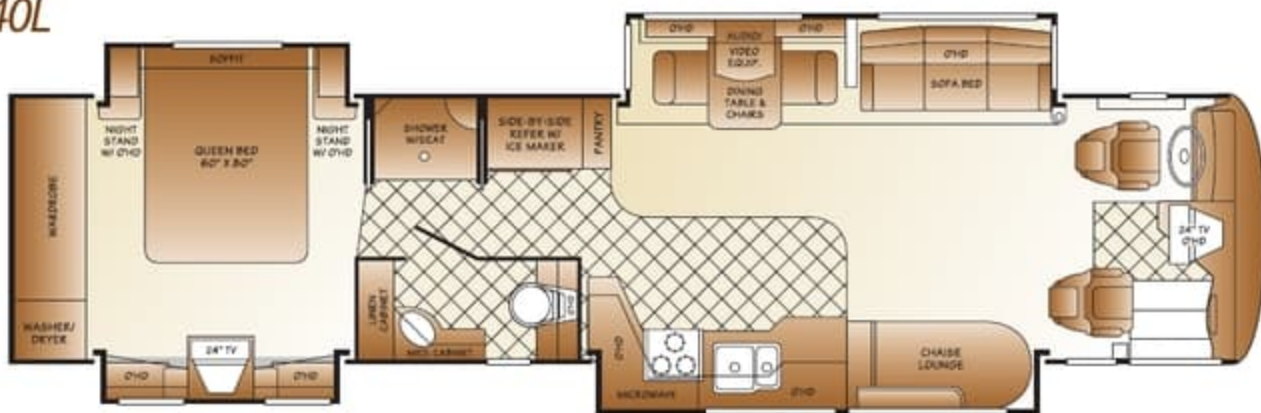


Opt. 157 Dual 32"
Plasma TV Package
(Front End)



Opt. 631
Fabric
Ottoman

Model 40L



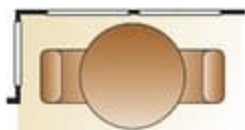
Model 40N



Model 40Q



Opt. 149
Norcold® 4-Door
w/Ice Maker
(N/A 38X)



Opt. 831 Free Standing
Dinette w/Bay Windows
(N/A 40W and 40Q)



Opt. 870 Desk
w/Leather Recliner
(N/A 40Q and 40W)



Opt. 494 Leather Recliner
w/Footrest and End Table
(N/A 40Q and 40W)



Opt. 198
72" Leather Sofa Bed



Opt. 637 Leather Sofa
w/Removable Arms
(N/A 40N and 40V)



Opt. 116
Recessed
Cooktop



Opt. 830
Facing Dinette
(N/A 40W and 40Q)



Opt. 870 Desk w/Leather
Recliner and Doorside
Overhead Opt. 630
(40Q and 40W Only)



Opt. 494 Leather Recliner
w/Footrest and End Table and
Doorside Overhead Opt. 630
(40Q and 40W Only)



Opt. 211 68" Leather
Sofa (N/A 40N and 40V)

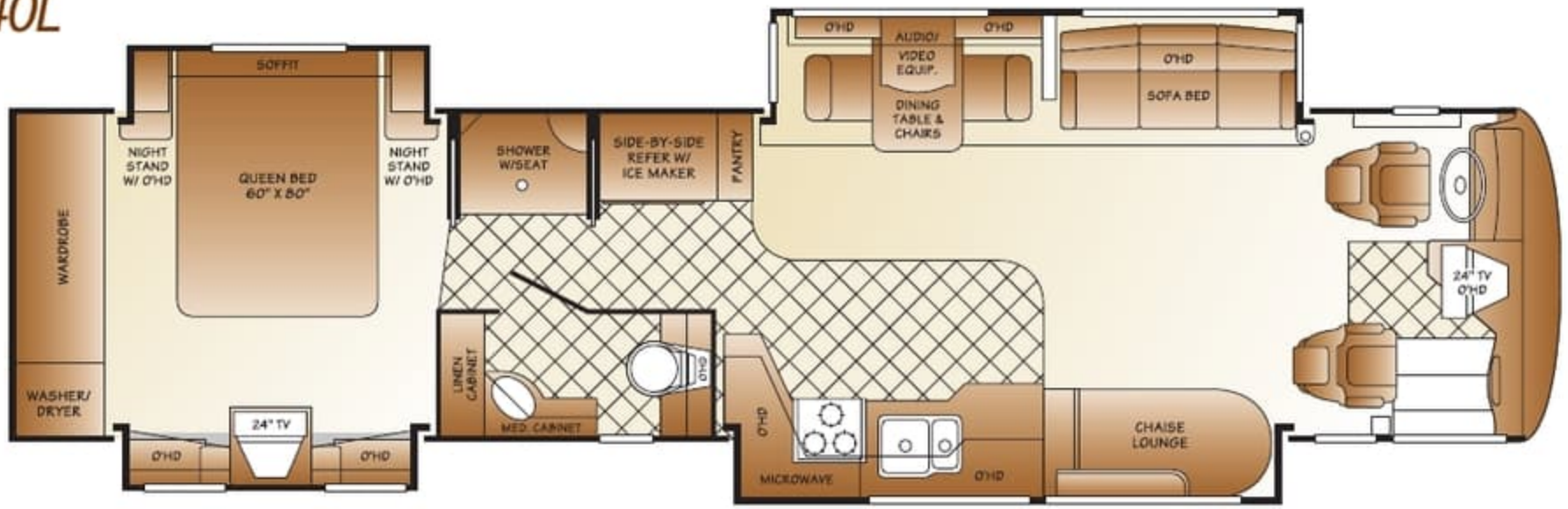


Opt. 210 72" Leather
Sofa w/Air Mattress
(N/A 40N, 40Q, 40V
and 40W)



Opt. 636
72" Leather Sofa Bed
w/Removable Arms

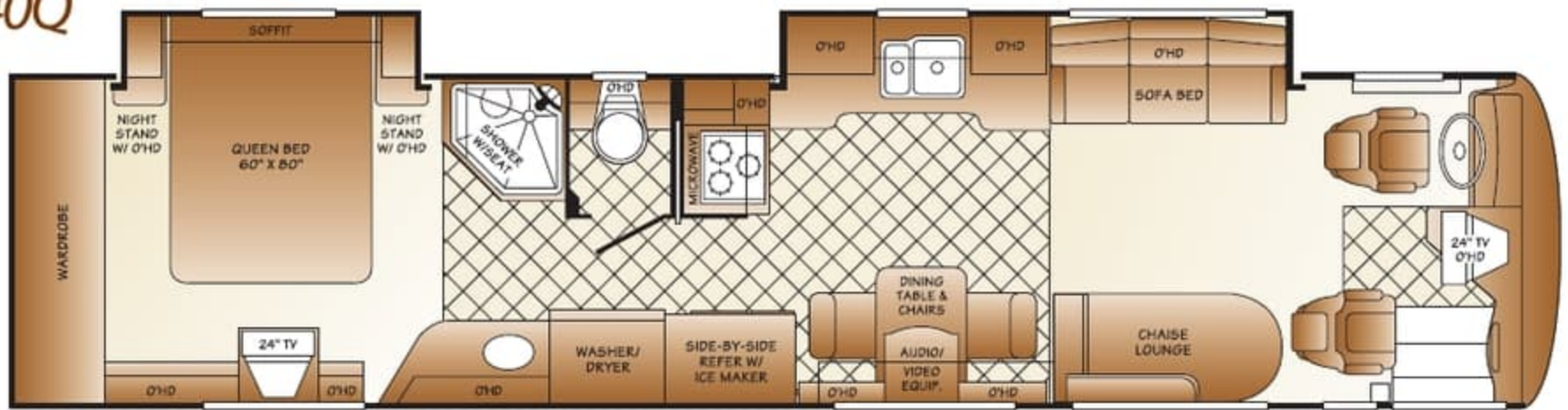
Model 40L



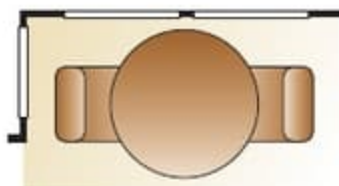
Model 40N



Model 40Q



Opt. 149
Norcold® 4-Door
w/Ice Maker
(N/A 38X)



Opt. 831 Free Standing
Dinette w/Bay Windows
(N/A 40W and 40Q)



Opt. 870 Desk
w/Leather Recliner
(N/A 40Q and 40W)



Opt. 494 Leather Recliner
w/Footrest and End Table
(N/A 40Q and 40W)



Opt. 198
72" Leather Sofa Bed



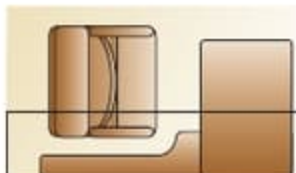
Opt. 637 Leather Sofa
w/Removable Arms
(N/A 40N and 40V)



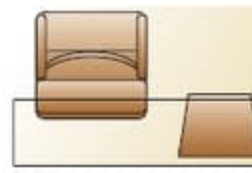
Opt. 116
Recessed
Cooktop



Opt. 830
Facing Dinette
(N/A 40W and 40Q)



Opt. 870 Desk w/Leather
Recliner and Doorside
Overhead Opt. 630
(40Q and 40W Only)



Opt. 494 Leather Recliner
w/Footrest and End Table and
Doorside Overhead Opt. 630
(40Q and 40W Only)



Opt. 211 68" Leather
Sofa (N/A 40N and 40V)

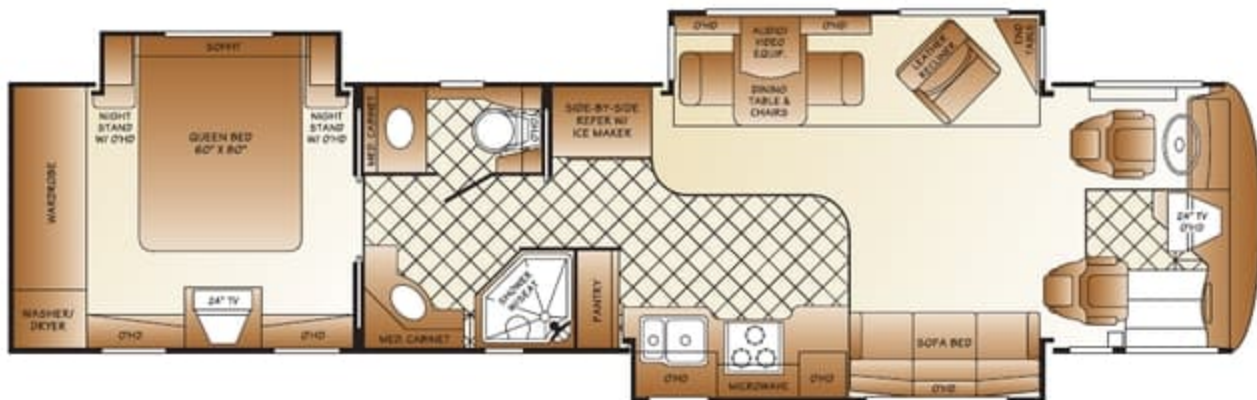


Opt. 210 72" Leather
Sofa w/Air Mattress
(N/A 40N, 40Q, 40V
and 40W)

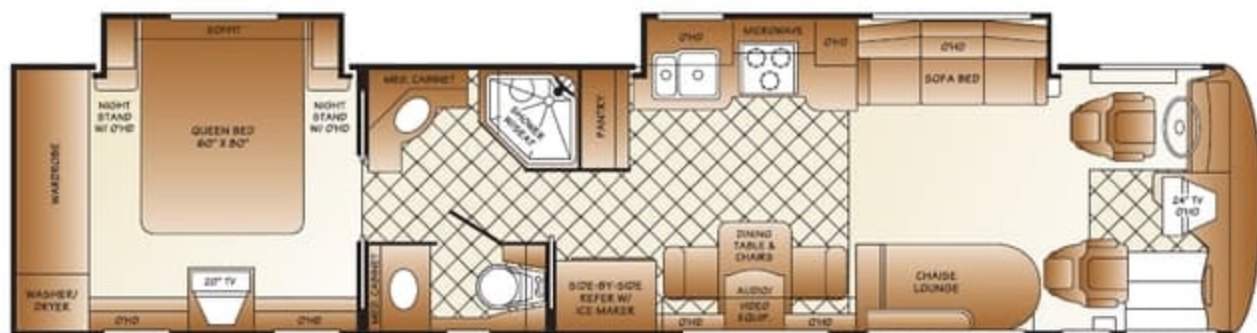


Opt. 636
72" Leather Sofa Bed
w/Removable Arms

Model 40V



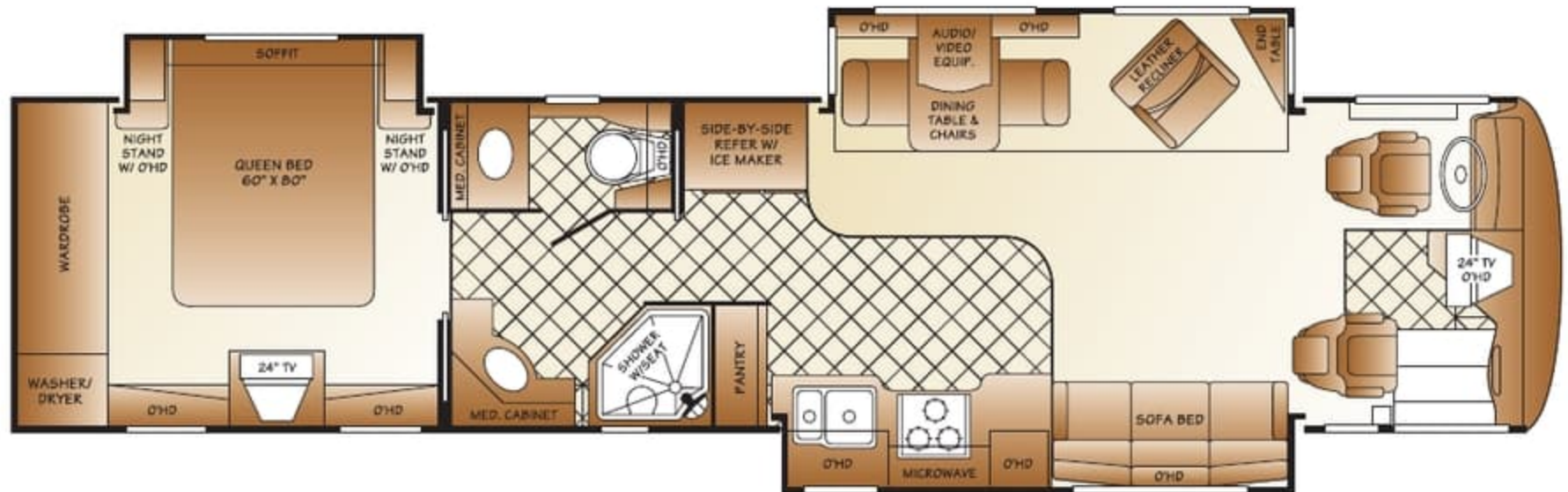
Model 40W



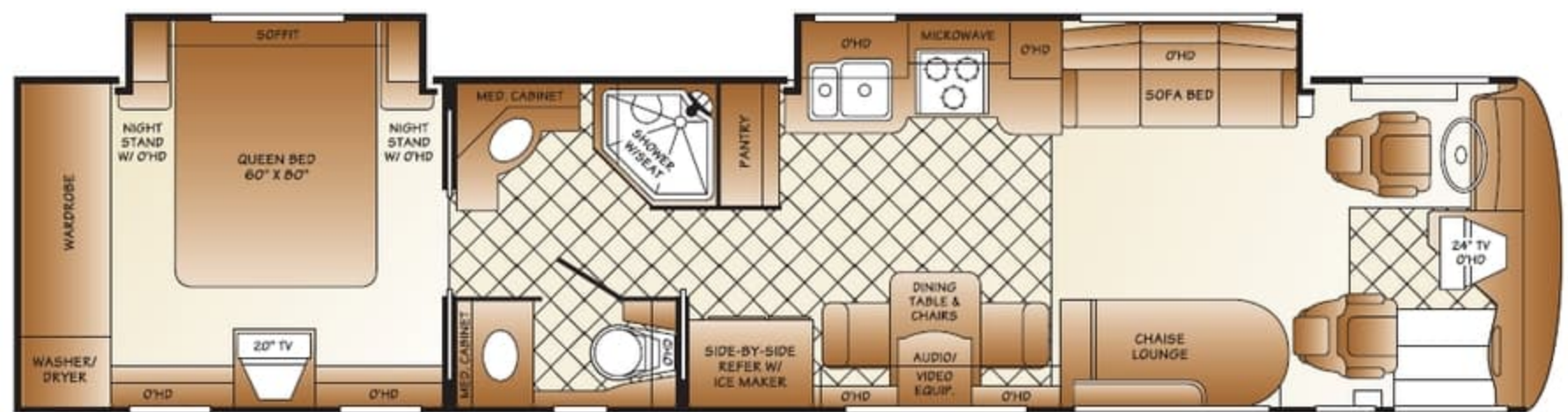
AMERICAN
TRADITION



Model 40V



Model 40W



AMERICAN
TRADITION



Weights (pounds)	38X	40J	40L	40N	40Q	40V	40W
GVWR (lbs.)(1)	34,600	34,600	34,600	34,600	34,600	34,600	34,600
Front GAWR (lbs.)(2)	14,600	14,600	14,600	14,600	14,600	14,600	14,600
Rear GAWR (lbs.)(2)	20,000	20,000	20,000	20,000	20,000	20,000	20,000
Base Weight (lbs.)(3)	27,300	28,800	29,950	29,250	27,400	29,250	27,600
GCWR (lbs.)(4) Spartan*	49,600	49,600	49,600	49,600	49,600	49,600	49,600
GCWR (lbs.)(4) Freightliner*	46,600	46,600	46,600	46,600	46,600	46,600	46,600
Hitch Rating Weight (lbs.)* Spartan*	15,000	15,000	15,000	15,000	15,000	15,000	15,000
Hitch Rating Weight (lbs.)* Freightliner*	12,000	12,000	12,000	12,000	12,000	12,000	12,000
Tongue Weight (lbs.)* Spartan*	1,500	1,500	1,500	1,500	1,500	1,500	1,500
Tongue Weight (lbs.)* Freightliner*	1,200	1,200	1,200	1,200	1,200	1,200	1,200

Measurements

Wheel Base	254"	266"	266"	266"	266"	266"	266"
Overall Length (5)	38'-11.5"	39'-11.5"	39'-11.5"	39'-11.5"	39'-11.5"	39'-11.5"	39'-11.5"
Overall Height w/AC	12' 8"	12' 8"	12' 8"	12' 8"	12' 8"	12' 8"	12' 8"
Overall Width (max) (6)	101.5"	101.5"	101.5"	101.5"	101.5"	101.5"	101.5"
Interior Height (max)	82"	82"	82"	82"	82"	82"	82"
Interior Width (max)	96"	96"	96"	96"	96"	96"	96"

Tank & Liquid Capacities (gallons)

Fresh Water Holding Tank (gal.)	95	95	95	95	95	95	95
Grey Water Holding Tank (gal.)	70	70	70	70	70	70	70
Black Water Holding Tank (gal.)	40	40	40	40	40	40	40
Appliance LP Gas Tank (WC) (7)	38	38	38	38	38	38	38
Water Heater Tank (gal.)	10	10	10	10	10	10	10
Fuel Capacity (gal.)	125	125	125	125	125	125	125

Liquid Weight Reference: Water (gal) = (8.3 lbs/3.8 kgs) Fuel (gal) = (7.1 lbs/3.2 kgs) LPG (gal) = (4.2 lbs/1.9 kgs)

Metric Conversion: Multiply pounds x 0.453 to obtain kilograms Multiply gallons x 3.785 to obtain liters

Chassis Frame	38/40 Ft. Models	Transmission	Allison® 3000 MH, 6-Speed w/Electronic Shifter
Engine	Liberty Chassis™	Alternator	200 Amp Leece Neville Amps
Torque	Cummins® 8.9L, 370 hp ISL Diesel 1200 lb. ft. at 1300 RPM	Tires	295/80R 22.5LRH L Radial

1. GVWR (Gross Vehicle Weight Rating): Means the maximum permissible loaded weight of the motor home. The GVWR is equal to or greater than the sum of the unloaded vehicle weight plus the net carrying capacity.
2. GAWR (Gross Axle Weight Rating): Means the maximum permissible loaded weight a specific axle is designed to carry.
3. Base Weight: Means the estimated weight of the motor home without fuel, options, water, cargo or passengers.
4. GCWR (Gross Combined Weight Rating): Means the value specified by the motor home manufacturer as the maximum allowable loaded weight of this motor

home with its towed vehicle. Towing and braking capacities may differ. Refer to Fleetwood and chassis manufacturer manuals for complete information.

5. Length taken from front bumper to rear bumper (excludes accessories).
6. Excludes safety equipment and awnings.
7. Tank Manufacturer's listed water capacity (WC). Actual LPG capacity is 80% of water listing as required by the safety code.

* The chassis manufacturer recommends the installation of a supplemental brake control system to activate the brakes on the vehicle or trailer you are towing.

IMPORTANT — PLEASE READ: Product information, photography and illustrations included in this publication were as accurate as possible at the time of printing. For further product information and changes, please visit our website at www.fleetwoodrv.com or contact your local Fleetwood dealer. Prices, materials, design and specifications are subject to change without notice. All weights, fuel, liquid capacities and dimensions are approximate. Fleetwood has designed its recreational vehicles to provide a variety of uses for its customers. Each vehicle features optimal seating, sleeping, storage and fluid capacities. The user is responsible for selecting the proper combination of loads (i.e. occupants, equipment, fluids, cargo, etc.) to ensure that the vehicle's capacities are not exceeded.

Weights (pounds)	38X	40J	40L	40N	40Q	40V	40W
GVWR (lbs.)(1)	34,600	34,600	34,600	34,600	34,600	34,600	34,600
Front GAWR (lbs.)(2)	14,600	14,600	14,600	14,600	14,600	14,600	14,600
Rear GAWR (lbs.)(2)	20,000	20,000	20,000	20,000	20,000	20,000	20,000
Base Weight (lbs.)(3)	27,300	28,800	29,950	29,250	27,400	29,250	27,600
GCWR (lbs.)(4) Spartan®	49,600	49,600	49,600	49,600	49,600	49,600	49,600
GCWR (lbs.)(4) Freightliner®	46,600	46,600	46,600	46,600	46,600	46,600	46,600
Hitch Rating Weight (lbs.)* Spartan®	15,000	15,000	15,000	15,000	15,000	15,000	15,000
Hitch Rating Weight (lbs.)* Freightliner®	12,000	12,000	12,000	12,000	12,000	12,000	12,000
Tongue Weight (lbs.)* Spartan®	1,500	1,500	1,500	1,500	1,500	1,500	1,500
Tongue Weight (lbs.)* Freightliner®	1,200	1,200	1,200	1,200	1,200	1,200	1,200

Measurements

Wheel Base	254"	266"	266"	266"	266"	266"	266"
Overall Length (5)	38'-11.5"	39'-11.5"	39'-11.5"	39'-11.5"	39'-11.5"	39'-11.5"	39'-11.5"
Overall Height w/AC	12' 8"	12' 8"	12' 8"	12' 8"	12' 8"	12' 8"	12' 8"
Overall Width (max) (6)	101.5"	101.5"	101.5"	101.5"	101.5"	101.5"	101.5"
Interior Height (max)	82"	82"	82"	82"	82"	82"	82"
Interior Width (max)	96"	96"	96"	96"	96"	96"	96"

Tank & Liquid Capacities (gallons)

Fresh Water Holding Tank (gal.)	95	95	95	95	95	95	95
Grey Water Holding Tank (gal.)	70	70	70	70	70	70	70
Black Water Holding Tank (gal.)	40	40	40	40	40	40	40
Appliance LP Gas Tank (WC) (7)	38	38	38	38	38	38	38
Water Heater Tank (gal.)	10	10	10	10	10	10	10
Fuel Capacity (gal.)	125	125	125	125	125	125	125

Liquid Weight Reference: Water (gal) = (8.3 lbs/3.8 kgs) Fuel (gal) = (7.1 lbs/3.2 kgs) LPG (gal) = (4.2 lbs/1.9 kgs)

Metric Conversion: Multiply pounds x 0.453 to obtain kilograms Multiply gallons x 3.785 to obtain liters

Chassis	38/40 Ft. Models	Transmission	Allison® 3000 MH, 6-Speed
Frame	Liberty Chassis™	Alternator	w/Electronic Shifter
Engine	Cummins® 8.9L, 370 hp ISL Diesel	Tires	200 Amp Leece Neville Amps
Torque	1200 lb. ft. at 1300 RPM		295/80R 22.5LRH L Radial

1. GVWR (Gross Vehicle Weight Rating): Means the maximum permissible loaded weight of the motor home. The GVWR is equal to or greater than the sum of the unloaded vehicle weight plus the net carrying capacity.
2. GAWR (Gross Axle Weight Rating): Means the maximum permissible loaded weight a specific axle is designed to carry.
3. Base Weight: Means the estimated weight of the motor home without fuel, options, water, cargo or passengers.
4. GCWR (Gross Combined Weight Rating): Means the value specified by the motor home manufacturer as the maximum allowable loaded weight of this motor

home with its towed vehicle. Towing and braking capacities may differ. Refer to Fleetwood and chassis manufacturer manuals for complete information.

5. Length taken from front bumper to rear bumper (excludes accessories).
6. Excludes safety equipment and awnings.
7. Tank Manufacturer's listed water capacity (WC). Actual LPG capacity is 80% of water listing as required by the safety code.

* The chassis manufacturer recommends the installation of a supplemental brake control system to activate the brakes on the vehicle or trailer you are towing.

IMPORTANT — PLEASE READ: Product information, photography and illustrations included in this publication were as accurate as possible at the time of printing. For further product information and changes, please visit our website at www.fleetwoodrv.com or contact your local Fleetwood dealer. Prices, materials, design and specifications are subject to change without notice. All weights, fuel, liquid capacities and dimensions are approximate. Fleetwood has designed its recreational vehicles to provide a variety of uses for its customers. Each vehicle features optimal seating, sleeping, storage and fluid capacities. The user is responsible for selecting the proper combination of loads (i.e. occupants, equipment, fluids, cargo, etc.) to ensure that the vehicle's capacities are not exceeded.

Standard Features

Automotive

- Liberty Chassis™ by American Coach™
- Jacobs® 2-Stage Engine Compression Brake (Hi - Lo)
- Allison® 3000 MH, 6-Speed Automatic Transmission

Exterior Automotive

- Full Air Brakes w/Automatic Slack Adjusters
- 4-Point Leveling Jacks
- (6) Aluminum Wheels (4 Polished, 2 Non-Polished)
- Steel Surface on Front Bulkhead/Engine Frame
- Sound Insulation In Sub Floors, Front and Rear
- Undercoating
- Auxiliary Fog Lamps
- Anti-Lock Brake System (ABS)
- Radial Tires
- Tire Pressure Check Gauge
- (4) 12V Maintenance Free AGM® House Batteries (Group 27)
- (2) 12V Chassis Batteries (2000 CCA)
- Electronic Battery Control Center
- Bus Style Large 50" Windshield
- Intermittent Wipers
- Chrome "Bus Style" Heated Mirrors w/Remote Adjustments
- Denso® Climate Control System
- Mud Flaps
- Utility Light Front & Rear
- Hadley® Air Horns
- Trailer Hitch Receiver 12,000 LBS/Freightliner® and 15,000 LBS/Spartan™
- Daytime Run Lights

Interior Automotive

- Pneumatic Step Well Cover
- Back Lighted Instrument Panel
- Cruise Control
- Smart Wheel
- Passenger Drink Holder
- Driver Drink Holder
- Tilt/ Telescoping Steering Wheel
- Rear Vision System w/One-Way Audio (Camera & Monitor)
- Auxiliary Start Switch
- Auxiliary Fog Lights
- Interior Wall Mounted Grab Bar
- Power Driver Window
- Power Driver/Passenger Sun Visors
- Driver Side Pull Down Shade
- Intermittent Wipers
- Visteon® AM/FM Single CD/Cassette—Dash
- (2) Auxiliary 12V Dash Receptacles
- Adjustable Brake and Throttle Pedals
- Manual Air Dump Switch
- L.C.C. Light Switch

- Driver/Passenger Map Lights
- Flexsteel® Leather Driver/Passenger Seats w/Integrated Seat Belts, Manual Lumbar and 6-Way Power
- Battery Disconnect Switch
- Pneumatic Step Well Cover
- Compass and Exterior Temperature Gauge

Structural

- Liberty Chassis™ (Patent Pending)
- E-Coated Steel Structure (Below Floor)
- Lightweight Aluminum Construction (Hull)
- Interlocking Extrusions
- Vacu-Bond® Sidewall, Roof & Floor Construction
- Heated Water & Holding Tank Compartments
- Insulated Storage Area
- Vacu-Bond® Walls w/Smooth Exterior Skin
- Bonded Windshield w/Frame

Exterior

- Domed One-Piece Fiberglass Roof w/Radius Corners
- Full Fiberglass Front & Rear Caps
- Large Windshield Washer Bottle w/Adjustable Sprayer Nozzles
- Halogen Headlights
- Manual Generator Slide-Out
- Protective Vinyl Front Cover
- Fiberglass Front & Rear Quarter Panels
- Fiberglass Wheel Trim
- Fiberglass Molded Front Bumper
- Porch Light
- Front and Rear Docking Lights
- (4) Turn Signal Lamps on Each Side of Coach
- 30" Front Entry Door w/Dead Bolt
- Power Entry Step w/Last Out Feature
- Exterior Entry Assist Handle
- Dual Pane Windows w/Screens
- Window Awnings (Bedroom & Front Roadside Window)
- Color Coded Awnings & Awning Arms
- Exterior Flip-Up Storage Doors
- Gas Struts on All Luggage Doors
- Luggage Compartment Lights
- Whole Coach Water Filter System
- Exterior Convenience Light at Dump Valves
- Holding Tank w/Low Point Drain Valves
- Dual Holding Tank San-T-Flush System
- Tank Level Monitor (Interior/Exterior)
- Exterior Rinse Hose
- Fresh Water Gravity Fill
- Variable Speed Aquatec® Water Pump
- Park Telephone Ready
- Patio Receptacles
- Two Piece Rear Ladder
- Rear Rock Guard w/Logo

Interior

- Front Windshield Privacy Curtain
- Tile Floor at Front Entry (Laid Diagonally)
- Cell Phone Ready (Power)
- Entry Step Switch at Entry Wall
- Interior Multi Plexed Switches
- Centralize Control Panel Display Center
- Padded Vinyl Ceiling
- Pleated Shades
- Deluxe Padded Window Treatments
- 12V Fluorescent Ceiling Lighting System
- Skylight Cover (Selected Models)
- Tuff-Pex™ Plumbing System
- Washer/Dryer (Vented)
- Lined Shelves
- Multi-Plexed Slide-Out Control Switches
- Interior Assist Handle

Cabinetry

- Walnut, Regency Cherry, Clear White Maple, and Windsor Birch Cabinetry
- Wood Front TV Overhead
- Solid Wood Drawers
- Ball Bearing Drawer Guides w/Full Extension Hardware on All Drawers
- Solid Core Raised Panel Upper Cabinet Doors
- Cedar Lined Wardrobe in Bedroom
- Lined Cabinet Bottoms and Shelves

Galley

- Dometic® 120V/LP Gas Electric 12 Cu.Ft. Side by Side Refrigerator w/Icemaker (Brushed Aluminum Finish)
- Recessed 3 Burner Range w/Oven & Corian® Covers (Brushed Aluminum Finish)
- GE® Convection Microwave Oven w/Built In Range Hood (Brushed Aluminum Finish)
- 12V Power Vent 3-Speed
- Corian® Sink Covers
- Corian® Galley Countertop
- Large 60/40 Split Stainless Steel Galley Sink
- High Rise Galley Faucet w/Extendable Sprayer
- Base Cabinet Storage for the Range and Galley Sink Covers
- Hinged Plumbing and Access Panels
- Ceramic Tile Flooring (Laid Diagonally)
- Corian® Dinette Table w/Slide-Out & (4) Chairs
- 120V Outlet & Telephone Jack at Dinette
- Decorative Mirror Backsplash

Bath

- Corian® Lavy Top w/Porcelain Bowl and Moen® Faucet
- Deluxe Medicine Cabinet
- Hinged Plumbing Access Panels
- Ceramic Tile Flooring (Laid Diagonally)
- Skylight in Shower
- Fiberglass Shower Enclosure

- w/Molded Seat (Selected Models)
- Shower Door w/Decorative Glass
- Moen® Hand Held Shower Head
- Power Bath Vent
- Residential China Bowl Flush Toilet w/Hand Sprayer

Bedroom

- Fabric Décor Headboard
- 60" x 80" Full Queen Bed
- Day/Night Pleated Shades
- Corian® Nightstand Tops
- Wardrobe Light
- Shoe Storage in Ward Closet
- Secondary Phone Jack
- Generator Start/Stop Switch in Bedroom

Furnishings

- Flexsteel® Fabric Sofa Bed
- Flexsteel® Fabric Chaise Lounge (Select Models) (Does Not Convert Into a Bed)
- Flexsteel® Leather Recliner (Select Models)

Entertainment

- 24" Sony® Vega Flat Screen TV (Front and Bedroom)
- TV Cable Ready
- Park Telephone Ready
- Power TV Antenna w/Warning Alarm & (2) Jacks
- Pre-Programmed Universal Remote Control (Controls ALL Electronics)
- TracVision® Domed Digital Satellite System
- Home Theater System (Includes CD/DVD Player)

Coach Support Systems

- Dual 13.5 M Low Profile Roof Air Conditioners w/Heat Pump
- Onan® 7.5 kw Quiet Diesel Generator w/Manual Slide-Out Tray
- 2-Stage High efficient Furnaces w/Thermostat and Auto Ignition (15/22M & 23/34M)
- Whole House Surge Protector
- Energy Management System (50 Amp)
- Trace® RV Series 2500 Watt Continuous Inverter (130 Amp Converter)
- RC7 Battery Monitor
- Multi-Point Water Pump Switching
- DSI 10 Gallon Water Heater 120V/LP Gas
- Furnace Ducting

Safety

- Smoke Detector/Alarm
- Fire Extinguisher
- LP Gas Leak Detector/Alarm
- Carbon Monoxide Detector/Alarm
- Integrated Seat Belts/Driver and Passenger Seats
- Back-Up Alarm

Standard Features

Automotive

- Liberty Chassis™ by American Coach™
- Jacobs® 2-Stage Engine Compression Brake (Hi - Lo)
- Allison® 3000 MH, 6-Speed Automatic Transmission

Exterior Automotive

- Full Air Brakes w/Automatic Slack Adjusters
- 4-Point Leveling Jacks
- (6) Aluminum Wheels (4 Polished, 2 Non-Polished)
- Steel Surface on Front Bulkhead/Engine Frame
- Sound Insulation In Sub Floors, Front and Rear
- Undercoating
- Auxiliary Fog Lamps
- Anti-Lock Brake System (ABS)
- Radial Tires
- Tire Pressure Check Gauge
- (4) 12V Maintenance Free AGM® House Batteries (Group 27)
- (2) 12V Chassis Batteries (2000 CCA)
- Electronic Battery Control Center
- Bus Style Large 50" Windshield
- Intermittent Wipers
- Chrome "Bus Style" Heated Mirrors w/Remote Adjustments
- Denso® Climate Control System
- Mud Flaps
- Utility Light Front & Rear
- Hadley® Air Horns
- Trailer Hitch Receiver 12,000 LBS/Freightliner® and 15,000 LBS/Spartan®
- Daytime Run Lights

Interior Automotive

- Pneumatic Step Well Cover
- Back Lighted Instrument Panel
- Cruise Control
- Smart Wheel
- Passenger Drink Holder
- Driver Drink Holder
- Tilt/ Telescoping Steering Wheel
- Rear Vision System w/One-Way Audio (Camera & Monitor)
- Auxiliary Start Switch
- Auxiliary Fog Lights
- Interior Wall Mounted Grab Bar
- Power Driver Window
- Power Driver/Passenger Sun Visors
- Driver Side Pull Down Shade
- Intermittent Wipers
- Visteon® AM/FM Single CD/Cassette—Dash
- (2) Auxiliary 12V Dash Receptacles
- Adjustable Brake and Throttle Pedals
- Manual Air Dump Switch
- I.C.C. Light Switch

- Driver/Passenger Map Lights
- Flexsteel® Leather Driver/Passenger Seats w/Integrated Seat Belts, Manual Lumbar and 6-Way Power
- Battery Disconnect Switch
- Pneumatic Step Well Cover
- Compass and Exterior Temperature Gauge

Structural

- Liberty Chassis™ (Patent Pending)
- E-Coated Steel Structure (Below Floor)
- Lightweight Aluminum Construction (Hull)
- Interlocking Extrusions
- Vacu-Bond® Sidewall, Roof & Floor Construction
- Heated Water & Holding Tank Compartments
- Insulated Storage Area
- Vacu-Bond® Walls w/Smooth Exterior Skin
- Bonded Windshield w/Frame

Exterior

- Domed One-Piece Fiberglass Roof w/Radius Corners
- Full Fiberglass Front & Rear Caps
- Large Windshield Washer Bottle w/Adjustable Sprayer Nozzles
- Halogen Headlights
- Manual Generator Slide-Out
- Protective Vinyl Front Cover
- Fiberglass Front & Rear Quarter Panels
- Fiberglass Wheel Trim
- Fiberglass Molded Front Bumper
- Porch Light
- Front and Rear Docking Lights
- (4) Turn Signal Lamps on Each Side of Coach
- 30" Front Entry Door w/Dead Bolt
- Power Entry Step w/Last Out Feature
- Exterior Entry Assist Handle
- Dual Pane Windows w/Screens
- Window Awnings (Bedroom & Front Roadside Window)
- Color Coded Awnings & Awning Arms
- Exterior Flip-Up Storage Doors
- Gas Struts on All Luggage Doors
- Luggage Compartment Lights
- Whole Coach Water Filter System
- Exterior Convenience Light at Dump Valves
- Holding Tank w/Low Point Drain Valves
- Dual Holding Tank San-T-Flush System
- Tank Level Monitor (Interior/Exterior)
- Exterior Rinse Hose
- Fresh Water Gravity Fill
- Variable Speed Aquatec® Water Pump
- Park Telephone Ready
- Patio Receptacles
- Two Piece Rear Ladder
- Rear Rock Guard w/Logo

Interior

- Front Windshield Privacy Curtain
- Tile Floor at Front Entry (Laid Diagonally)
- Cell Phone Ready (Power)
- Entry Step Switch at Entry Wall
- Interior Multi Plexed Switches
- Centralize Control Panel Display Center
- Padded Vinyl Ceiling
- Pleated Shades
- Deluxe Padded Window Treatments
- 12V Fluorescent Ceiling Lighting System
- Skylight Cover (Selected Models)
- Tuff-Pex™ Plumbing System
- Washer/Dryer (Vented)
- Lined Shelves
- Multi-Plexed Slide-Out Control Switches
- Interior Assist Handle

Cabinetry

- Walnut, Regency Cherry, Clear White Maple, and Windsor Birch Cabinetry
- Wood Front TV Overhead
- Solid Wood Drawers
- Ball Bearing Drawer Guides w/Full Extension Hardware on All Drawers
- Solid Core Raised Panel Upper Cabinet Doors
- Cedar Lined Wardrobe in Bedroom
- Lined Cabinet Bottoms and Shelves

Galley

- Dometic® 120V/LP Gas Electric 12 Cu.Ft. Side by Side Refrigerator w/Icemaker (Brushed Aluminum Finish)
- Recessed 3 Burner Range w/Oven & Corian® Covers (Brushed Aluminum Finish)
- GE® Convection Microwave Oven w/Built In Range Hood (Brushed Aluminum Finish)
- 12V Power Vent 3-Speed
- Corian® Sink Covers
- Corian® Galley Countertop
- Large 60/40 Split Stainless Steel Galley Sink
- High Rise Galley Faucet w/Extendable Sprayer
- Base Cabinet Storage for the Range and Galley Sink Covers
- Hinged Plumbing and Access Panels
- Ceramic Tile Flooring (Laid Diagonally)
- Corian® Dinette Table w/Slide-Out & (4) Chairs
- 120V Outlet & Telephone Jack at Dinette
- Decorative Mirror Backsplash

Bath

- Corian® Lavy Top w/Porcelain Bowl and Moen® Faucet
- Deluxe Medicine Cabinet
- Hinged Plumbing Access Panels
- Ceramic Tile Flooring (Laid Diagonally)
- Skylight in Shower
- Fiberglass Shower Enclosure

- w/Molded Seat (Selected Models)
- Shower Door w/Decorative Glass
- Moen® Hand Held Shower Head
- Power Bath Vent
- Residential China Bowl Flush Toilet w/Hand Sprayer

Bedroom

- Fabric Décor Headboard
- 60" x 80" Full Queen Bed
- Day/Night Pleated Shades
- Corian® Nightstand Tops
- Wardrobe Light
- Shoe Storage in Ward Closet
- Secondary Phone Jack
- Generator Start/Stop Switch in Bedroom

Furnishings

- Flexsteel® Fabric Sofa Bed
- Flexsteel® Fabric Chaise Lounge (Select Models) (Does Not Convert Into a Bed)
- Flexsteel® Leather Recliner (Select Models)

Entertainment

- 24" Sony® Vega Flat Screen TV (Front and Bedroom)
- TV Cable Ready
- Park Telephone Ready
- Power TV Antenna w/Warning Alarm & (2) Jacks
- Pre-Programmed Universal Remote Control (Controls ALL Electronics)
- TracVision Domed Digital Satellite System
- Home Theater System (Includes CD/DVD Player)

Coach Support Systems

- Dual 13.5 M Low Profile Roof Air Conditioners w/Heat Pump
- Onan® 7.5 kw Quiet Diesel Generator w/Manual Slide-Out Tray
- 2-Stage High efficient Furnaces w/Thermostat and Auto Ignition (15/22M & 23/34M)
- Whole House Surge Protector
- Energy Management System (50 Amp)
- Trace® RV Series 2500 Watt Continuous Inverter (130 Amp Converter)
- RC7 Battery Monitor
- Multi-Point Water Pump Switching
- DSI 10 Gallon Water Heater 120V/LP Gas
- Furnace Ducting

Safety

- Smoke Detector/Alarm
- Fire Extinguisher
- LP Gas Leak Detector/Alarm
- Carbon Monoxide Detector/Alarm
- Integrated Seat Belts/Driver and Passenger Seats
- Back-Up Alarm

Options

Automotive

- Air Ride Suspension w/Bilstein® Shocks—Spartan®
- Air Ride Suspension w/Sachs® Shocks—Freightliner®
- Spartan® IFS Option w/370 HP Cummins® ISL Engine (Independent Front Suspension)
- Freightliner® ZF Option w/370 HP Cummins® ISL Engine (Independent Front Suspension)
- CSA Spartan® Package
- CSA Freightliner® Package

Exterior Automotive

- Air & Hydraulic Leveling System

Interior Automotive

- Satellite Radio (First Year Subscription is Included/Cassette Feature and Remote CD N/A with this Option)
- CB Radio Ready
- GPS® Navigation System (Integrated Into the Sony® Back-Up Monitor)
- Night Vision—Raytheon®
- Trip Tek
- On Star® Navigation System (First Year Subscription is Included)

- In Dash CD-6 Radio
- Flexsteel® Leather Passenger Queen Seat /6-Way Power/Electric Footrest

Exterior

- Exterior Spot Light
- Solar Charging Panel
- Night Vision®—Raytheon
- Keyless Entry Includes Key Fob
- (4) Exterior Graphics Packages (Carefree Electric Awning Included in Graphic Pkg/Entry Door Awning is not Stationary)
- Girard Electric Patio and Window Awning Package (Power window Awnings Included in Package)
- "A" Tray Package (2) 90" **
- "B" Tray Package (2) 54" & (2) 36" **
- "C" Tray Package (1) 90", (1) 54", (1) 36" **
- "D" Tray Package (1) 54", (1) 36" **
- Norcold® 12V/120V Chest Refrigerator/Freezer AC/DC

Interior

- Washer/Dryer Ready (Delete W/D Feature/Add 2 Shelves)
- Power Vent w/Rain Sensors (All Vents, Galley, Bath and Shower Area)
- VLP Delivery
- Central Vacuum System w/Tool Kit
- Doorside Overhead Cabinet (Reduces Exterior Window Size)

Galley

- Power Vents w/Rain Sensors Throughout
- NuHeat® Heated Tile Floor
- Norcold® 4 Door 12 Cu. Ft Refrigerator w/Icemaker (Brush Aluminum Finish)
- Recessed 3 Burner Cook Top (Brush Aluminum Finish)
- CSA—Recessed Cook Top
- Galley to Entry Tile Flooring (Carpet Required Under Flush Floor Area)
- NuHeat® Heated Tile Floor (Galley to Entry Tile Floor Option)
- Facing Dinette
- Free Standing Dinette w/Bay Windows (Eliminates Wall Storage Unit and Increases Window Size/38" Round Table is Made From Hardwood)

Bath

- NuHeat® Heated Tile Floor
- Shower Door w/Reeded Glass

Bedroom

- King Bed (72" x 76")
- Shirt Ward w/Drawers at Rear Wall
- Full Length Wardrobe at Rear Wall
- Bedroom Ceiling Fan

Furnishings

- Flexsteel® 68" Leather Sofa (Replaces Chaise Lounge)

- Flexsteel® Leather Chaise Lounge (Replaces Fabric Chaise Lounge on Selected Models)
- Flexsteel® Fabric Ottoman (Leather Ottoman N/A)
- Desk w/Flexsteel® Leather Recliner
- Flexsteel® Leather Sofa Bed
- Flexsteel® Free Standing Leather Recliner (Includes End Table) (Standard on 40N and 40V Models)
- Leather Sofa Bed w/Removable Arms
- Leather Sofa w/Removable Arms

Entertainment

- Exterior Entertainment Center (24" Vega TV w/Swivel Slide-out Tray)
- Front 32" Plasma TV/ 20" LCD TV in Bedroom (Fixed Locations for both TV's)

Coach Support Systems

- Automatic Generator Start Switch
- The chassis manufacturer recommends the installation of a supplemental brake control system to activate the brakes on the vehicle or trailer you are towing.
- ** Must select tray package.

American Coach™ is proud to offer the new Liberty Chassis™ On all 2004 Models.

The Liberty Chassis is unlike any other chassis on the road today. American Coach developed the Liberty Chassis with strength and rigidity to dramatically improve ride and handling. The new chassis design enables us to offer floor plan designs with triple and quad slide-outs along with the many features listed below:

A. Huge Towing Capacity

- 12,000 lb. or 15,000 lb. hitch

B. Laminated Storage Liners

- Easy to Maintain, Neat, Clean Look, Durable

C. E-Coated Structure

- Protects Against Corrosion
- Longevity, Quality and Workmanship

D. All Steel Structure

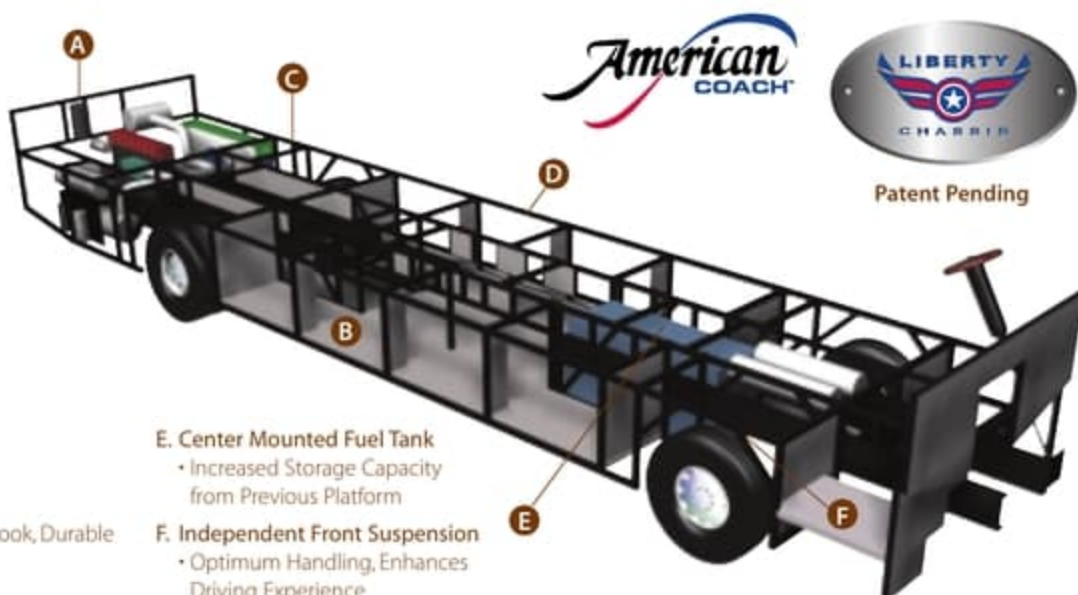
- Minimize Flex, Enhances Driving Experience, Longevity, Strength

E. Center Mounted Fuel Tank

- Increased Storage Capacity from Previous Platform

F. Independent Front Suspension

- Optimum Handling, Enhances Driving Experience



Patent Pending

Visit your local American Coach dealer and take a test drive to experience the Liberty Chassis difference for yourself.

Options

Automotive

- Air Ride Suspension w/Bilstein® Shocks—Spartan®
- Air Ride Suspension w/Sachs® Shocks—Freightliner®
- Spartan® IFS Option w/370 HP Cummins® ISL Engine (Independent Front Suspension)
- Freightliner® ZF Option w/370 HP Cummins® ISL Engine (Independent Front Suspension)
- CSA Spartan® Package
- CSA Freightliner® Package

Exterior Automotive

- Air & Hydraulic Leveling System

Interior Automotive

- Satellite Radio (First Year Subscription is Included/Cassette Feature and Remote CD N/A with this Option)
- CB Radio Ready
- GPS® Navigation System (Integrated Into the Sony® Back-Up Monitor)
- Night Vision—Raytheon®
- Trip Tek
- On Star® Navigation System (First Year Subscription is Included)

- In Dash CD-6 Radio
- Flexsteel® Leather Passenger Queen Seat /6-Way Power/Electric Footrest

Exterior

- Exterior Spot Light
- Solar Charging Panel
- Night Vision®—Raytheon
- Keyless Entry Includes Key Fob
- (4) Exterior Graphics Packages (Carefree Electric Awning Included in Graphic Pkg/Entry Door Awning is not Stationary)
- Girard Electric Patio and Window Awning Package (Power window Awnings Included in Package)
- "A" Tray Package (2) 90" **
- "B" Tray Package (2) 54" & (2) 36" **
- "C" Tray Package (1) 90", (1) 54", (1) 36" **
- "D" Tray Package (1) 54", (1) 36" **
- Norcold® 12V/120V Chest Refrigerator/Freezer AC/DC

Interior

- Washer/Dryer Ready (Delete W/D Feature/Add 2 Shelves)
- Power Vent w/Rain Sensors (All Vents, Galley, Bath and Shower Area)
- V.I.P. Delivery
- Central Vacuum System w/Tool Kit
- Doorside Overhead Cabinet (Reduces Exterior Window Size)

Galley

- Power Vents w/Rain Sensors Throughout
- NuHeat® Heated Tile Floor
- Norcold® 4 Door 12 Cu. Ft Refrigerator w/Icemaker (Brush Aluminum Finish)
- Recessed 3 Burner Cook Top (Brush Aluminum Finish)
- CSA—Recessed Cook Top
- Galley to Entry Tile Flooring (Carpet Required Under Flush Floor Area)
- NuHeat® Heated Tile Floor (Galley to Entry Tile Floor Option)
- Facing Dinette
- Free Standing Dinette w/Bay Windows (Eliminates Wall Storage Unit and Increases Window Size/38" Round Table is Made From Hardwood)

Bath

- NuHeat® Heated Tile Floor
- Shower Door w/Reeded Glass

Bedroom

- King Bed (72" x 76")
- Shirt Ward w/Drawers at Rear Wall
- Full Length Wardrobe at Rear Wall
- Bedroom Ceiling Fan

Furnishings

- Flexsteel® 68" Leather Sofa (Replaces Chaise Lounge)

- Flexsteel® Leather Chaise Lounge (Replaces Fabric Chaise Lounge on Selected Models)
- Flexsteel® Fabric Ottoman (Leather Ottoman N/A)
- Desk w/Flexsteel® Leather Recliner
- Flexsteel® Leather Sofa Bed
- Flexsteel® Free Standing Leather Recliner (Includes End Table) (Standard on 40N and 40V Models)
- Leather Sofa Bed w/Removable Arms
- Leather Sofa w/Removable Arms

Entertainment

- Exterior Entertainment Center (24" Vega TV w/Swivel Slide-out Tray)
- Front 32" Plasma TV/ 20" LCD TV in Bedroom (Fixed Locations for both TV's)

Coach Support Systems

- Automatic Generator Start Switch

*The chassis manufacturer recommends the installation of a supplemental brake control system to activate the brakes on the vehicle or trailer you are towing.

** Must select tray package.

American Coach™ is proud to offer the new Liberty Chassis™ On all 2004 Models.

The Liberty Chassis is unlike any other chassis on the road today. American Coach developed the Liberty Chassis with strength and rigidity to dramatically improve ride and handling. The new chassis design enables us to offer floor plan designs with triple and quad slide-outs along with the many features listed below:

A. Huge Towing Capacity

- 12,000 lb. or 15,000 lb. hitch

B. Laminated Storage Liners

- Easy to Maintain, Neat, Clean Look, Durable

C. E-Coated Structure

- Protects Against Corrosion
- Longevity, Quality and Workmanship

D. All Steel Structure

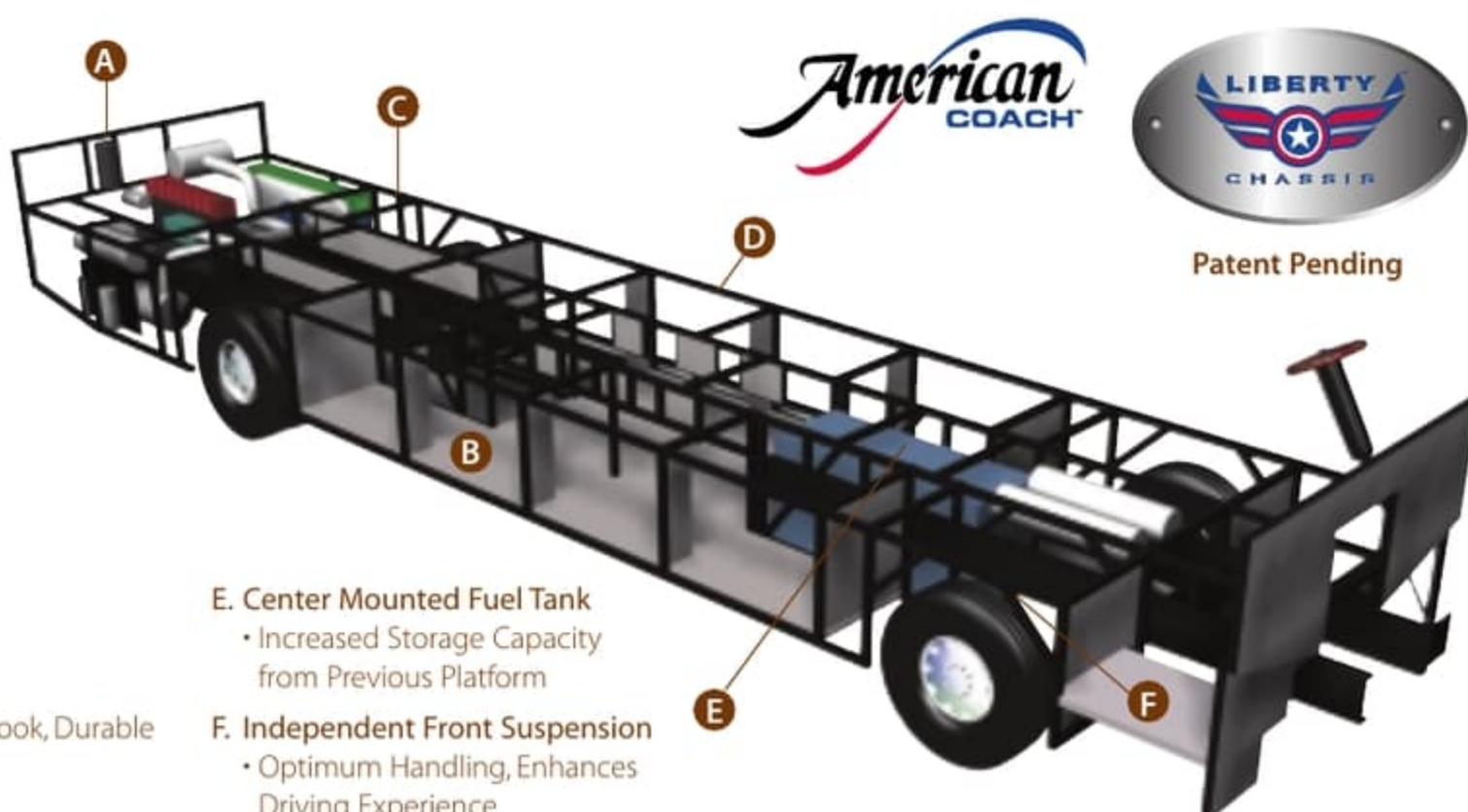
- Minimize Flex, Enhances Driving Experience, Longevity, Strength

E. Center Mounted Fuel Tank

- Increased Storage Capacity from Previous Platform

F. Independent Front Suspension

- Optimum Handling, Enhances Driving Experience



Patent Pending

Visit your local American Coach dealer and take a test drive to experience the Liberty Chassis difference for yourself.

AMERICAN TRADITION

RV OWNERCARE...

is a limited one-year/three-year or 15,000 mile warranty, whichever occurs first, and it is fully transferable for the first 12 months.



RV OWNERCARE is one of the RV industry's most comprehensive programs and includes systems, appliances, components, and construction, with no deductible and no service charge.

RV OWNERCARE coverage is provided from a company that will be around in the future to service your needs. See your nearest Fleetwood dealer for a full explanation of benefits and restrictions.

Club Fleetwood...

As a Fleetwood owner, you're eligible to become a member of our owners group, Club Fleetwood. It's a perfect way to meet other Fleetwood owners who love to travel to beautiful resorts and vacation spots all across America. Call (877) 577-2560 and join the fun!



What Drives You?

Maybe it's feeling like you're the only one on Earth. Perhaps it's the unique sense of closeness with the great outdoors. Or, it might be the joy that comes from spending quality time with family and friends.

Whatever the reason, we know that you have a strong drive to experience everything that comes with spending time on the road. And for more than 50 years, we've shared that passion with you.

Because we're RV enthusiasts ourselves, you can see our passion in the vehicles we design and build. Own a Fleetwood, and you'll feel like you're not just traveling, but embarking on an experience unlike any other.

Set your own course for adventure and get out there and explore the world around you. Once you do, you'll see what it is that drives us — it's you.



Your local American Coach dealer is:

www.americancoach.info Visit our website to find a dealer near you or learn more about other Fleetwood products. Or call 1-800-444-4905.



IMPORTANT—PLEASE READ: Product information, photography and illustrations included in this publication were as accurate as possible at the time of printing. For further product information and changes, please visit our website at www.fleetwoodrv.com or contact your local Fleetwood dealer. Prices, materials, design and specifications are subject to change without notice. All weights, fuel, liquid capacities and dimensions are approximate. Fleetwood has designed its recreational vehicles to provide a variety of uses for its customers. Each vehicle features optimal seating, sleeping, storage and fluid capacities. The user is responsible for selecting the proper combination of loads (i.e. occupants, equipment, fluids, cargo, etc.) to ensure that the vehicle's capacities are not exceeded.

AMERICAN TRADITION

RV OWNERCARE...

is a limited one-year/three-year or 15,000 mile warranty, whichever occurs first, and it is fully transferable for the first 12 months.



RV OWNERCARE is one of the RV industry's most comprehensive programs and includes systems, appliances, components, and construction, with no deductible and no service charge.

RV OWNERCARE coverage is provided from a company that will be around in the future to service your needs. See your nearest Fleetwood dealer for a full explanation of benefits and restrictions.

Club Fleetwood...

As a Fleetwood owner, you're eligible to become a member of our owners group, Club Fleetwood. It's a perfect way to meet other Fleetwood owners who love to travel to beautiful resorts and vacation spots all across America. Call (877) 577-2560 and join the fun!



What Drives You?

Maybe it's feeling like you're the only one on Earth. Perhaps it's the unique sense of closeness with the great outdoors. Or, it might be the joy that comes from spending quality time with family and friends.

Whatever the reason, we know that you have a strong drive to experience everything that comes with spending time on the road. And for more than 50 years, we've shared that passion with you.

Because we're RV enthusiasts ourselves, you can see our passion in the vehicles we design and build. Own a Fleetwood, and you'll feel like you're not just traveling, but embarking on an experience unlike any other.

Set your own course for adventure and get out there and explore the world around you. Once you do, you'll see what it is that drives us — it's you.

FLEETWOOD
Driven to Explore

Your local American Coach dealer is:

www.americancoach.info Visit our website to find a dealer near you or learn more about other Fleetwood products. Or call 1-800-444-4905.

tread lightly!
LEAVING A GOOD IMPRESSION

IMPORTANT—PLEASE READ: Product information, photography and illustrations included in this publication were as accurate as possible at the time of printing. For further product information and changes, please visit our website at www.fleetwoodrv.com or contact your local Fleetwood dealer. Prices, materials, design and specifications are subject to change without notice. All weights, fuel, liquid capacities and dimensions are approximate. Fleetwood has designed its recreational vehicles to provide a variety of uses for its customers. Each vehicle features optimal seating, sleeping, storage and fluid capacities. The user is responsible for selecting the proper combination of loads (i.e. occupants, equipment, fluids, cargo, etc.) to ensure that the vehicle's capacities are not exceeded.