

HOLIDAY RAMBLER ✧ 2004 ADMIRAL SE





DISCOVER AMERICA IN A COACH THAT KNOWS THE WAY.



AT HOLIDAY RAMBLER, WE'VE SPENT 50 YEARS PERFECTING THE RV EXPERIENCE. AND ALONG THE WAY, WE'VE LEARNED A THING OR TWO ABOUT OFFERING GREAT COACHES AT A GREAT VALUE. THE 2004 ADMIRAL SE STARTS WITH THE OUTSTANDING QUALITY OF OUR ALUMAFRAME® SUPERSTRUCTURE AND MULTI-LAYER WALL, ROOF AND FLOOR CONSTRUCTION. AND IT INCLUDES INNOVATIVE FLOORPLANS, STUNNING DECORS, EASYSTOR SLIDE-OUT BAGGAGE COMPARTMENTS, AND LOADS OF TERRIFIC STANDARD AND OPTIONAL FEATURES TO LET YOU CREATE THE BEST COACH FOR YOUR FAMILY. READY FOR A LIFETIME OF ROADSIDE ADVENTURES? YOUR 2004 ADMIRAL SE IS WAITING FOR YOU.



#### EVERY DETAIL CREATES AN EXQUISITE EXPERIENCE.

It's been 50 years since Holiday Rambler rolled out its first RV. And this is a golden opportunity to honor the thousands of families across North America who've shared the journey with us. They've come to rely on Holiday Rambler for high-quality, innovative products designed to be within the reach of every family that seeks the freedom of the open road. So here's to the last 50 years. And here's to the promise of many more.



#### BETTER STAIN PROTECTION

Manufactured in, not added on. 3M Scotchgard™ Carpet Stain Release is applied during the carpet manufacturing process for a higher level of protection. Dupont Teflon® soil repellent is applied to virtually all upholstery fabric during the finishing process for superior coverage.\*

\*Brand and application of carpet or upholstery fabric protection may vary depending on date recreational vehicle was manufactured.



# EXTERIOR COLORS | FABRICS | WOODS



CASTLE GATE

A



B



C



D



VINTAGE OAK



ENCHANTMENT

A



B



C



D



MAPLE



SPUN SILVER

A



B



C



D



REGAL CHERRY

A Sofa

B Accent

C Bedspread

D Carpet



## S P E C I F I C A T I O N S

Weights (Ford Chassis)	32PBD	34SBD	34PBD	34PDT	36PED	36DBD	37PCD	37PCT
Gross Vehicle Weight Rating (Lbs.)	20,500	22,000	22,000	22,000	22,000	22,000	22,000	22,000
Gross Combined Weight Rating (Lbs.)	25,500	26,000	26,000	26,000	26,000	26,000	26,000	26,000
Front Gross Axle Weight Rating (Lbs.)	7,000	7,500	7,500	7,500	7,500	7,500	7,500	7,500
Rear Gross Axle Weight Rating (Lbs.)	13,500	14,500	14,500	14,500	14,500	14,500	14,500	14,500

Weights (Workhorse Chassis)	W-20	W-22	W-22	W-22	W-22	W-22	W-22	
Gross Vehicle Weight Rating (Lbs.)	20,700	22,000	22,000	22,000	22,000	22,000	22,000	N/A
Gross Combined Weight Rating (Lbs.)	25,700	26,000	26,000	26,000	26,000	26,000	26,000	N/A
Front Gross Axle Weight Rating (Lbs.)	7,500	8,000	8,000	8,000	8,000	8,000	8,000	N/A
Rear Gross Axle Weight Rating (Lbs.)	13,500	14,500	14,500	14,500	14,500	14,500	14,500	N/A

Optional Weights (Workhorse Chassis)	W-22							
Gross Vehicle Weight Rating (Lbs.)	22,000	N/A	N/A	N/A	N/A	N/A	N/A	N/A
Gross Combined Weight Rating (Lbs.)	26,000	N/A	N/A	N/A	N/A	N/A	N/A	N/A
Front Gross Axle Weight Rating (Lbs.)	8,000	N/A	N/A	N/A	N/A	N/A	N/A	N/A
Rear Gross Axle Weight Rating (Lbs.)	14,500	N/A	N/A	N/A	N/A	N/A	N/A	N/A

Measurements	32PBD	34SBD	34PBD	34PDT	36PED	36DBD	37PCD	37PCT
Wheelbase	208"	228"	228"	228"	238"	238"	242"	242"
Overall Length	32' 7"	34' 10"	34' 10"	34' 10"	36' 6"	36' 6"	37' 0"	37' 0"
Overall Height, Including A/C, Ford	11' 8"	11' 8"	11' 8"	11' 9"	11' 8"	11' 8"	11' 9"	11' 9"
Overall Height, Including A/C, Workhorse	11' 8"	12' 0"	12' 0"	12' 0"	12' 0"	12' 0"	12' 0"	12' 0"
Interior Height	6' 6"	6' 6"	6' 6"	6' 6"	6' 6"	6' 6"	6' 6"	6' 6"
Interior Width	94.5"	94.5"	94.5"	94.5"	94.5"	94.5"	94.5"	94.5"
Exterior Width	100.5"	100.5"	100.5"	100.5"	100.5"	100.5"	100.5"	100.5"

Tank Capacities*	32PBD	34SBD	34PBD	34PDT	36PED	36DBD	37PCD	37PCT
Water Heater (Gal.)*	10	10	10	10	10	10	10	10
Gray Tank (Gal.)*	42	40	42	42	54	42/39	45	45
Black Tank (Gal.)*	42	42	42	42	45	42/39	54	54
Fresh Tank (Gal.)*	60	60	60	60	60	58	60	60
LP Tank (Gal.)**	24	24	24	24	24	24	24	24

\* All tank capacities are estimated based upon calculations provided by the tank manufacturers and represent approximate capacities. The actual "usable capacity" may be greater or less than the estimated capacities based upon fabrication and installation of the tanks.

\*\* Actual filled LP capacity is 80% of listing due to safety shut-off required on tank.



## BODY CONSTRUCTION

### Standard Features

- Alumaframe® Superstructure
- Steel Cage Cockpit Construction
- Peaked Aluminum Roof with Fiberglass Insulation
- Smooth Aluminum Exterior Walls
- Front and Rear Molded Fiberglass Caps with Integrated Bumpers
- Steel Framed Floor on Steel Trusses
- Laminated Structurwood™ Flooring
- Interior Paneling with 3/4" Insulation
- Foam Insulated Floor Framing with Luaun Backer
- One-Piece Engine Cover
- Power Heated Remote Exterior Mirrors
- Headlamps with Turn Signals
- Streamlined Baggage Doors with Integrated Single Handle Latches
- EasyStor Slide-Out Compartments
- One-Piece Polyethylene Storage Compartment
- Wheel Mud Flaps
- Painted Mask and Skirt with Vinyl Exterior Graphics
- Rear Ladder
- Interior Rubber Entry Step
- Exterior Double Entry Steps, Triple Entry Steps on W-22, Workhorse Chassis
- Undercoating

### Options

- Smooth Gel Coat Fiberglass Exterior Walls
- Full Length Mud Flap

## FORD CHASSIS/ENGINE/SUSPENSION

### Standard Features

- Electronic Fuel Injection Gasoline Engine 6.8L V10
- Cubic Inch Displacement 415"/6.8L
- Torque @ 3250 RPMs 425 lbs./ft.
- 4-Speed Automatic Transmission with Overdrive
- Fuel Tank Capacity 75 Gallon
- 130 Amp Alternator
- Rear Axle Ratio 5.38:1
- Radial Tires 245/70R/19.5F
- Chrome Wheel Covers
- Leaf Spring Suspension
- ABS Brake System
- Hitch Receiver with Connector
- SmartStructure®

## WORKHORSE CHASSIS/ENGINE/SUSPENSION

### Standard Features

- Electronic Fuel Injection Gasoline Engine 8.1L V8 (N/A: 37PCT)

- Cubic Inch Displacement 496"/8.1L (N/A: 37PCT)
- Torque @ 340 HP 455 lbs./ft. (N/A: 37PCT)
- 5-Speed Automatic Transmission with Overdrive (N/A: 37PCT)
- Fuel Tank Capacity 75 Gallon (N/A: 37PCT)
- 145 Amp Alternator (N/A: 37PCT)
- Rear Axle Ratio 5.38:1 (N/A: 37PCT)
- Radial Tires 235/80R 22.5G (All except 32PBD 245/70R 19.5F) (N/A: 37PCT)
- Stainless Steel Wheel Liners (N/A: 37PCT)
- Leaf Spring Suspension (N/A: 37PCT)
- ABS Brake System (N/A: 37PCT)
- Hitch Receiver with Connector (N/A: 37PCT)
- SmartStructure® (N/A: 37PCT)

### Options

- Manual Hydraulic Leveling System
- Workhorse W-22 Chassis Rated 22,000 Lb., Radial Tires 235/80R 22.5G, 4,000 Lb. Hitch (32PBD)
- Stainless Steel Wheel Simulators, Standard on Workhorse Chassis

## COCKPIT

### Standard Features

- Fiberglass Automotive Dash with Burlwood Instrumentation Panel and Two Tone Dash Vinyl
- CD Player/Radio with Four Speakers
- Multi-Positioned Sunvisors
- Front Privacy Drape with Tie Backs
- Rear Vision System Prep
- Intermittent Windshield Wipers
- Tilt Steering Wheel
- Cruise Control
- Power Steering
- Electric Automotive Horn
- Center Console with Cup Holder and Snack Tray
- Side Cup Holders for Co-Pilot Seat with Magazine Rack Below
- Fabric Pilot and Co-Pilot Recliner Seats
- Carpeted Driver and Passenger Floor Mats
- Dash Workstation
- Smoked Plexiglas® Cabinet Doors over Entertainment Center Systems
- Secure Front Cab over TVs with Steel Framing

### Options

- Six-Way Power Pilot Seat
- Six-Way Power Co-Pilot Seat
- Soft Touch Vinyl Pilot and Co-Pilot Seats
- Rear Vision System

- Pilot and Co-Pilot Pull Down Sun Shades
- CB Radio Prep
- Driver's Side Door with Full Electric
- AM/FM Cassette, Deletes CD Player

## APPLIANCES AND ACCESSORIES

### Standard Features

- Large Double-Door Refrigerator
- High-Output 3-Burner Cooktop
- Bi-Fold Range Cover
- Spacesaver Microwave with Touch Control
- 27" TV Stereo Color with Remote Control (Centered in Cockpit Overhead) (Entertainment Center in 36PED 25" TV)
- TV Antenna with TV Jacks
- VCR Prep and Video Control Box with Booster
- Dual Exterior Hook-Ups for DSS and Cable
- Cable TV Hook-Up and Telephone Jacks
- Exterior Gas Line Hook-Up Prep for LP Accessories

### Options

- Large Double-Door Refrigerator with Ice Maker
- Large Four-Door Refrigerator with Ice Maker (N/A with Roll-Out Pantry) (N/A: 32PBD)
- High Output 3-Burner Range with Oven
- Spacesaver Convection Microwave with Touch Control
- Washer/Dryer Prep (Requires 50 Amp Service Option) (N/A: 34PDT with Workhorse Chassis) (32PBD, 34PDT, 36PED, 36DBD)
- Combination Washer/Dryer (Requires Washer/Dryer Prep Option) (N/A: 34PDT with Workhorse Chassis) (32PBD, 34PDT, 36PED, 36DBD)
- Stereo TV and VCR Wired through Ceiling Speakers
- 19" Color TV with Remote Control in Bedroom
- VCR
- DVD Player
- Digital Satellite System Prep
- Exterior Entertainment Center, CD Player Radio with Two Speakers (N/A: 34PDT)
- Fireplace (Requires 50 Amp Service Option) (36PED)

## INTERIOR

### Standard Features

- Vintage Oak Cabinetry
- Raised Panel Cabinet Doors on Overhead Cabinets, Flat Panel Doors on Base Cabinets and Wardrobes

- Cabinet End Panels
- Black ABS Refrigerator Insert
- Decorative Wall Board
- Wallpaper Border Kitchen, Bath, and Bedroom Walls
- Self-Supporting Top Hinged Overhead Storage Doors and Positive Catches on All Other Doors
- Low Friction Roller Drawer Guides
- Wood Interior Grab Handle on Cabinet at Entry Door
- Brass Finished Entry Rail for Step Well
- Brass Cabinetry Hardware and Bath Accessories
- Integrated Cup Holder in Slide-Out next to Sofa
- Laminate Kitchen Countertop with Wood Edge, Stainless Steel Sink, Chrome Faucet and Two Sink Covers
- Recessed Kitchen Countertop Extensions (34PDT, 36PED)
- Toe Kicks, Kitchen and Bath Base Cabinets
- Laminate Bathroom Countertop with Laminate Perm-Edge
- All Other Countertops are Laminate with Wood Edge
- Kitchen Overhead Cabinets with Adjustable Shelf
- Kitchen Pantry with Adjustable Shelves next to Refrigerator (N/A: 32PBD)
- Linoleum Flooring in Kitchen and Entryway (N/A: 34PDT)
- Wilsonart® Plank Flooring in Bath, Kitchen and Entryway (34PDT)
- Linoleum Flooring in Bathroom (N/A: 34PDT)
- Wilsonart® Plank Flooring in Rear Bath (36DBD)
- Upgraded Nylon Carpeting with Scotchgard™ Stain Release Pad in Living Area and Bedroom
- Soft Touch Padded Vinyl Ceiling
- Wood Slide-Out Fascia with Fabric Inserts
- Elongated Beveled Octagon Living Area or Bedroom Mirror, with Border under Mirrors Living Area Location (32PBD, 34SBD, 36DBD, Bedroom in 37PCT)
- Picture Living or Bedroom Area, 34PDT, 36PED Side of Refer Wall, 32PBD, 34PBD, BR Bath Wall Side of Bed, 34SBD End of Shower Wall (N/A: 36DBD, 37PCD, 37PCT)
- Bath Door with Accent Trim on Hallway Side
- Wood Trim for Bath Door Opening Hallway Side
- Magazine Rack Bathroom (36DBD, 37PCD, 37PCT)
- Crown Molding in Bedroom and Living Area on All Open Walls



## ADMIRAL SE STANDARDS AND OPTIONS

- Medicine Cabinet with Adjustable Shelves
- Bathroom Lav Base Mirror with Wood Frame
- Towel Rack on Back of Bath Door
- Two Towel Rings in Bathroom
- Accent Mirror on Rear Wall with Wall Border under Mirror (N/A: 36DBD, 37PCD, 37PCT)
- Bedspread with Two Decorative Pillows
- Fabric Headboard
- Day/Night Pleated Shades in Living Area and Blackout Shades in Bedroom
- Mini Blinds in Kitchen and Bathroom
- Soil Repellant on Fabric, Teflon® Fabric Protection
- Valance above Entry Door with Clock

### Options

- Decors: Castle Gate, Enchantment, Spun Silver
- Wood Choice: Regal Cherry, Maple
- Laminate Plank Flooring in Kitchen, Bath and Entryway (N/A: 34PDT)
- Roll-Out Pantry next to Refrigerator with 4 Baskets (N/A with Four-Door Refrigerator Option) (N/A: 32PBD)
- Hardwood Raised Panel Doors on Refrigerator

## FURNITURE

### Standards

- Queen Bed with Nightstands
- Party Table behind Co-Pilot Seat (N/A: 34PDT, 36PED)
- Arched Back Wood Booth Dinette with Side Sliding Table Top and Drawers (N/A: 34PDT, 36PED)
- Freestanding Dinette with Wall Cabinet, Two Freestanding Chairs and Two Folding Chairs (34PDT, 36PED)
- Fabric Jackknife Sofa, Two Pillows on All Sofas
- Fabric Swivel Barrel Chair (N/A: 34PDT, 36PED)
- Fabric Swivel Barrel Chair and Desk Chair Bedroom (37PCD, 37PCT)

### Options

- Fabric Swivel Recliner Chair IPO Fabric Barrel Chair (N/A: 34PDT, 36PED)
- Fabric Swivel Barrel Chair IPO Desk Chair Bedroom (37PCD, 37PCT)
- Fabric Hide-A-Bed Sofa with Two Pillows (N/A: 36PED)
- Fabric Hide-A-Bed with Footrest and Two Pillows (36PED)
- Fabric Hide-A-Bed Sofa with Air Mattress and Two Pillows (N/A: 36PED)
- Fabric Hide-A-Bed with Footrest, Air Mattress and Two Pillows (36PED)

- Soft Touch Vinyl Hide-A-Bed Sofa with Two Pillows (N/A: 36PED)
- Soft Touch Vinyl Hide-A-Bed with Footrest, and Two Pillows (36PED)
- Soft Touch Vinyl Hide-A-Bed Sofa with Air Mattress and Two Pillows (N/A: 36PED)
- Soft Touch Vinyl Hide-A-Bed with Footrest, Air Mattress and Two Pillows (36PED)
- Fabric Sleeper L-Sofa with Drawer IPO Hide-A-Bed Sofa (36PED)
- Fabric Electric Sofa IPO Jackknife Sofa (N/A: 36PED)
- Bedroom Desk (N/A: 34PBD, 37PCD, 37PCT)
- Freestanding Dinette with Wall Cabinet, Two Freestanding Chairs and Two Folding Chairs (N/A: 34PDT, 36PED)

## ELECTRICAL SYSTEMS AND LIGHTS

### Standard Features

- 30 Amp 120V Distribution Panel and Power Cord
- 55 Amp Electronic 12V Power Converter
- Onan® 5.5 kW Gas Generator
- Two 6V House Batteries
- Battery Disconnect Switches
- 12V and 110V Outlet in Cockpit Area
- Porch Light
- Exterior Power Entry Step with Light
- Interior Step Well, Entry Step Lights
- Water Pump Switch in Service Bay Area and Bath
- Lights in Outside Storage Compartments
- 120V Receptacles in Outside Storage Compartment
- Underhood Utility Light
- Computer Hook-Up with Phone Jack in Dinette Area
- Pilot and Co-Pilot Map Lights
- Systems Control Center in Hallway
- Fluorescent Lights under Kitchen Overhead
- Fluorescent Ceiling Lights Throughout
- Fluorescent Ceiling Lights inside Living Area Slide-Out House
- Decorative Brass Lighting Living Room Wall Light, Dinette Overhead, Cosmetic Vanity Light
- Halogen Lights under Living Room and Dining Room Overhead Cabinets
- Bullet Lights over Bed Brass Finish with His and Hers Switches
- Decorative Side Lights inside Bedroom Slide-Out on End Walls

### Options

- 50 Amp Service with Energy Management System

- 50 Amp 120V Distribution Panel and Cord (Required with Fireplace Option)
- 130 Watt Inverter
- Storage Compartment Tank Monitor Gauge

## PLUMBING AND LP SYSTEMS

### Standard Features

- Kitchen Stainless Steel Sink with Single Lever Chrome Faucet
- Separate Chrome Faucet for Filtered Water
- Bath Lav Faucet Single Handle Brass Finish
- Demand Water System and Water Pump
- 10 Gallon LP Gas/Electric Water Heater with Electronic Ignition, DSI
- Winterization Valving System
- Water Heater By-Pass Valve
- Toilet with Sprayer
- No-Fuss Flush Holding Tank Rinsing System
- Insulated Systems Compartment with Easy Access to Hook-Up
- Shower inside Wet Bay with Hot/Cold Water
- Gravity and Pressurized Water Fill
- Contained Storage Area for Sewer Hose
- One-Piece Fiberglass Shower
- Shower Light on Ceiling inside Shower
- Brass Framed Shower Door with Obscure Glass

### Options

- Bath Tub

## HEATING, VENTS AND AIR CONDITIONING

### Standard Features

- One 13.5M BTU Air Conditioner with Ducted Air and Analog Wall Thermostat (32PBD, 34SBD, 34PBD, 34PDT)
- One 13.5M BTU and One 11.0M BTU Air Conditioner with Ducted Air and Wall Analog Thermostat (36PED, 36DBD, 37PCD, 37PCT)
- 35M BTU Electronic Ignition Furnace
- Electronic Dash AC/Heat Climate Control System
- In-Floor Ducted Heating System with Metal Floor Registers
- Manual Roof Vent Kitchen (36PED, 36DBD, 37PCD, 37PCT)
- Manual Roof Vent Living Area (32PBD, 34SBD, 34PBD, 34PDT)
- 12V Roof Vent Bathroom
- Manual Roof Vent Bedroom (32PBD, 34SBD, 34PBD, 34PDT)
- Metal Floor Registers (Antique Brass)

### Options

- Dual 13.5M BTU Air Conditioner (Requires 50 Amp Service) (36PED, 36DBD, 37PCD, 37PCT)
- One 13.5M BTU and One 11.0M BTU Air Conditioner (32PBD, 34SBD, 34PBD, 34PDT)
- 12V Attic Fan Kitchen (36PED, 36DBD, 37PCD, 37PCT)
- 12V Attic Fan Living Area (32PBD, 34SBD, 34PBD, 34PDT)
- 12V Wet Bay Heater

## WINDOWS, DOORS AND AWNINGS

### Standard Features

- Radius Flush Mount Single Pane Safety Glass Dark Tinted Slider Windows
- Radius Entrance Door with Clear Glass, Roller Shade, Screen Door and Anti-Skid Steps
- Two Interior Grab Handles and One Exterior Grab Handle
- Topper Slide-Out Awnings Living Area and Bedroom
- Protecta Glaze Tinted Plexiglas® Skylight in Bathroom
- Awning Rail

### Options

- Radius Flush Mount Dual Pane Safety Glass Dark Tinted Slider Windows
- Texture Vinyl Patio Awning
- Carefree® Automatic Patio Awning
- Texture Vinyl Window Awnings Living Area Slide-Out House Windows
- Texture Vinyl Side Window Awning Bedroom (N/A: 37PCD, 37PCT)

## SAFETY

### Standard Features

- Fire Extinguisher
- Deadbolt Lock on Entrance Door
- 120V GFI Protected Circuit, Kitchen, Bath and Exterior
- LP Gas Detector
- Smoke Detector
- Carbon Monoxide Detector
- Pilot and Co-Pilot Three-Point Seat Belts
- Third Brake Safety Light
- Egress Windows



## THE FAMILY ADVANTAGE



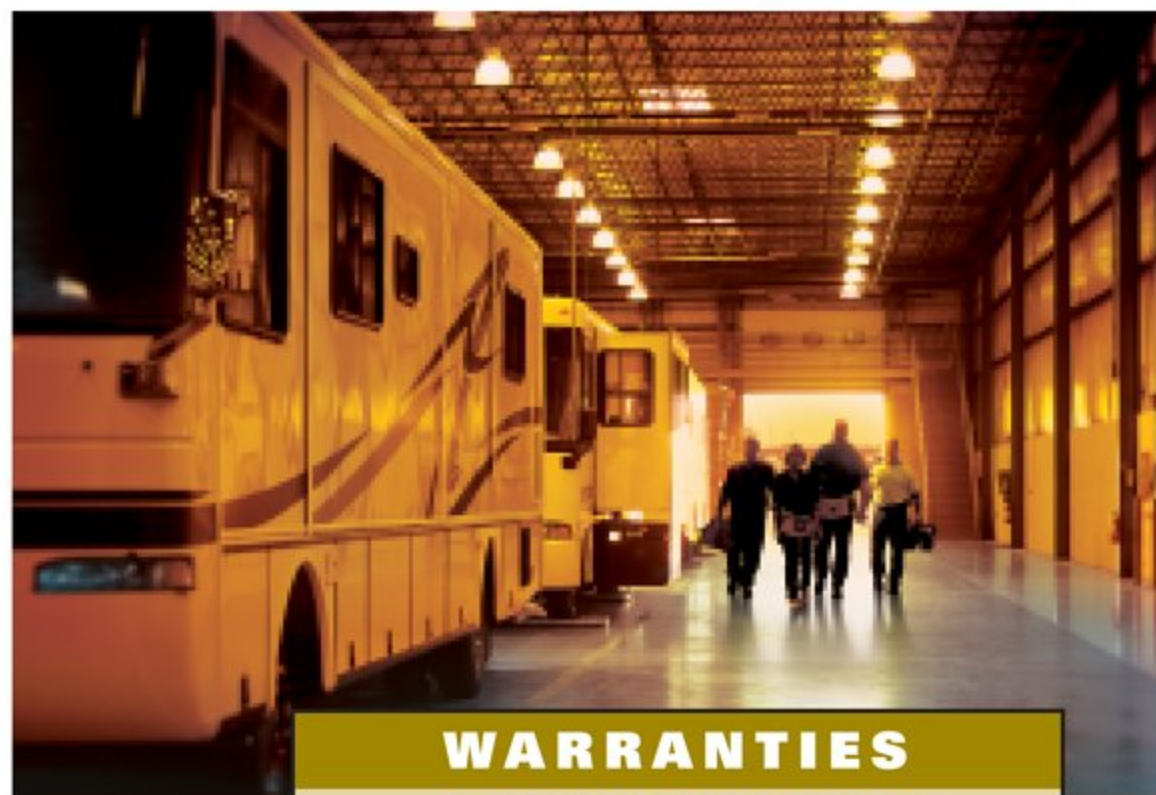
### WE ENCOURAGE YOU TO COMPARE THE HOLIDAY RAMBLER FAMILY ADVANTAGE.

When you purchase a coach from Holiday Rambler, you become part of an industry-leading family of companies called Monaco Coach Corporation. What does that mean for you? It means you have access to a wider array of benefits. To begin with, your coach is built by a level of expertise that could only be achieved through the teamwork and combined experience of all our companies. You also get the benefit of our White Glove factory inspection program, for a higher level of quality assurance and added peace of mind. And your dealer will be happy to tell you about our other innovative programs, including our Extended Care service agreements. Of course, once you're on the road, you'll have access to our nationwide network of more than 350 service facilities, meaning wherever you travel, you're



### 350 SERVICE FACILITIES NATIONWIDE AND GROWING.

never far from a friend. Ready to roll? In a 2004 Holiday Rambler, the strength of our entire family is behind you every mile of the way.



#### WARRANTIES

**12 MONTH/24,000 MILE**  
basic limited warranty

**5 YEAR/50,000 MILE**  
limited warranty on aluminum or steel frame  
structure of sidewall, roof, front and rear cap

See owner's manual for complete details.



**MONACO COACH CORPORATION**

Due to the large variety of options and floorplan arrangements available to our customers, actual weights for each unit can differ significantly. Holiday Rambler provides a weight sticker on each unit we produce which includes that unit's tank capacities and approximate weight. Consult your local Holiday Rambler dealer for unit availability and further information.

The information printed in this brochure reflects product design, fabrication, and component parts at the date of printing. The manufacturer reserves the right, at any time, to make changes in product design or material or component specifications as its sole option, without notice. This includes the substitution of components of a different brand or trade name, which will result in comparable performance. All information printed in this brochure is subject to change after the date of printing. Some features shown or mentioned in this brochure are optional and may only be available in selected floorplans. Photographs may show props or decorations that are not standard equipment on Holiday Rambler models. Holiday Rambler, the HR logo and its design, are registered trademarks. All other products and company names are trademarks and/or registered trademarks of their respective holders.

While the color of the motorhome's exterior and the interior fabrics depicted in this sales brochure are fair and reasonable depictions, the colors depicted may not be an exact match of the actual colors because of the variances in photo-processing and variances caused by inserting the photographs within the sales brochure. Due to product improvements, changes during the model year and/or transcription errors that may occur, information represented within this brochure may not be accurate at the time of your purchase. If certain information is significant to your purchasing decision, please confirm the information with your dealer prior to submitting your order.

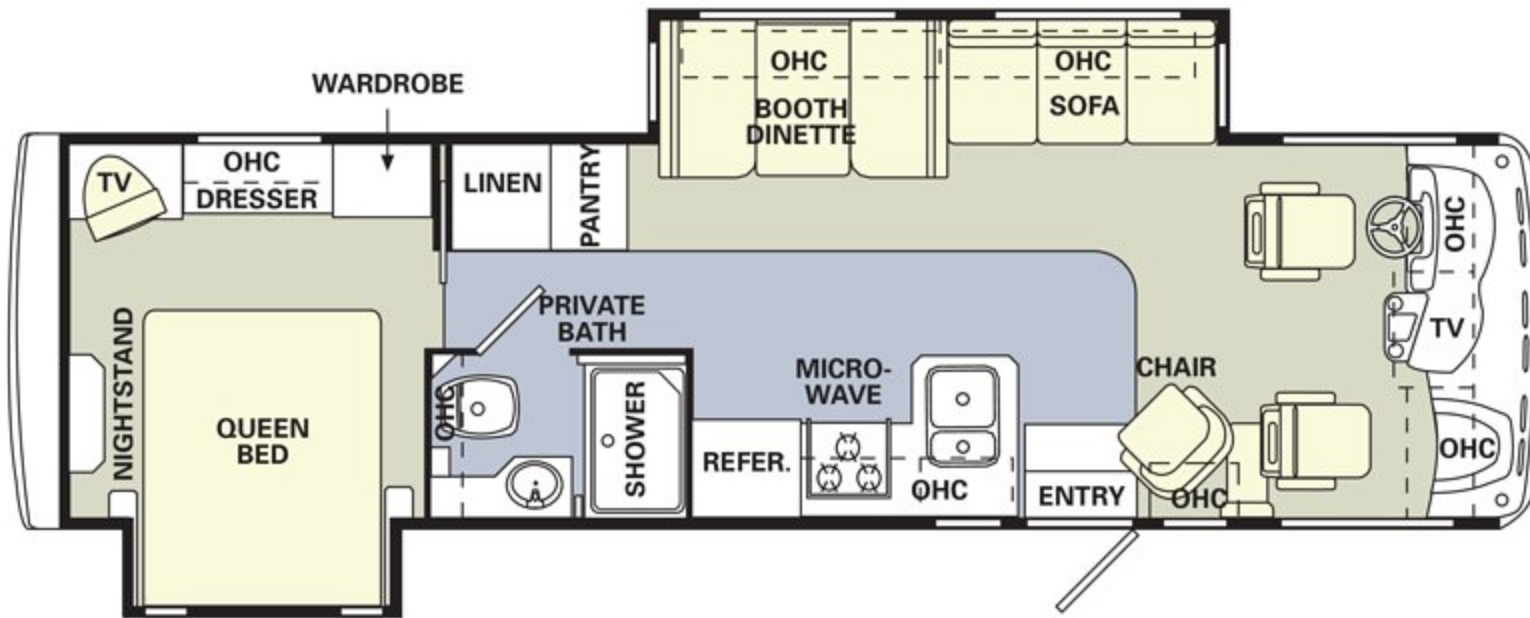
Your towed vehicle should be equipped with auxiliary brakes if the weight of the towed vehicle exceeds 1,000 lbs.



# ADMIRAL SE FLOORPLANS

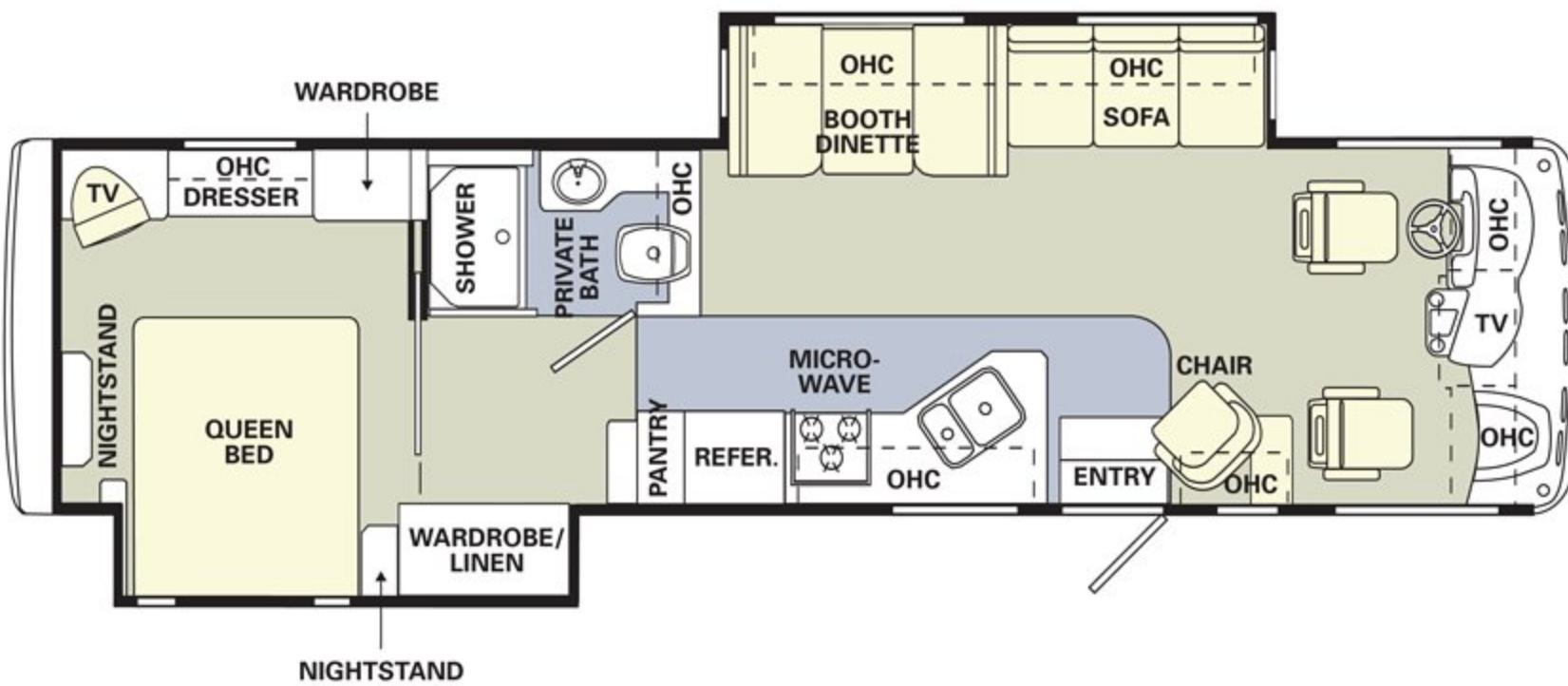
## 3 2 P B D

Options Include:  
 Bath Tub  
 Bedroom Desk  
 Fabric Electric Sofa  
 Fabric Hide-A-Bed  
 Fabric Hide-A-Bed with  
 Air Mattress  
 Fabric Swivel Recliner  
 Freestanding Dinette with  
 Wall Cabinet  
 Soft Touch Vinyl Hide-A-Bed  
 Soft Touch Vinyl Hide-A-Bed  
 with Air Mattress



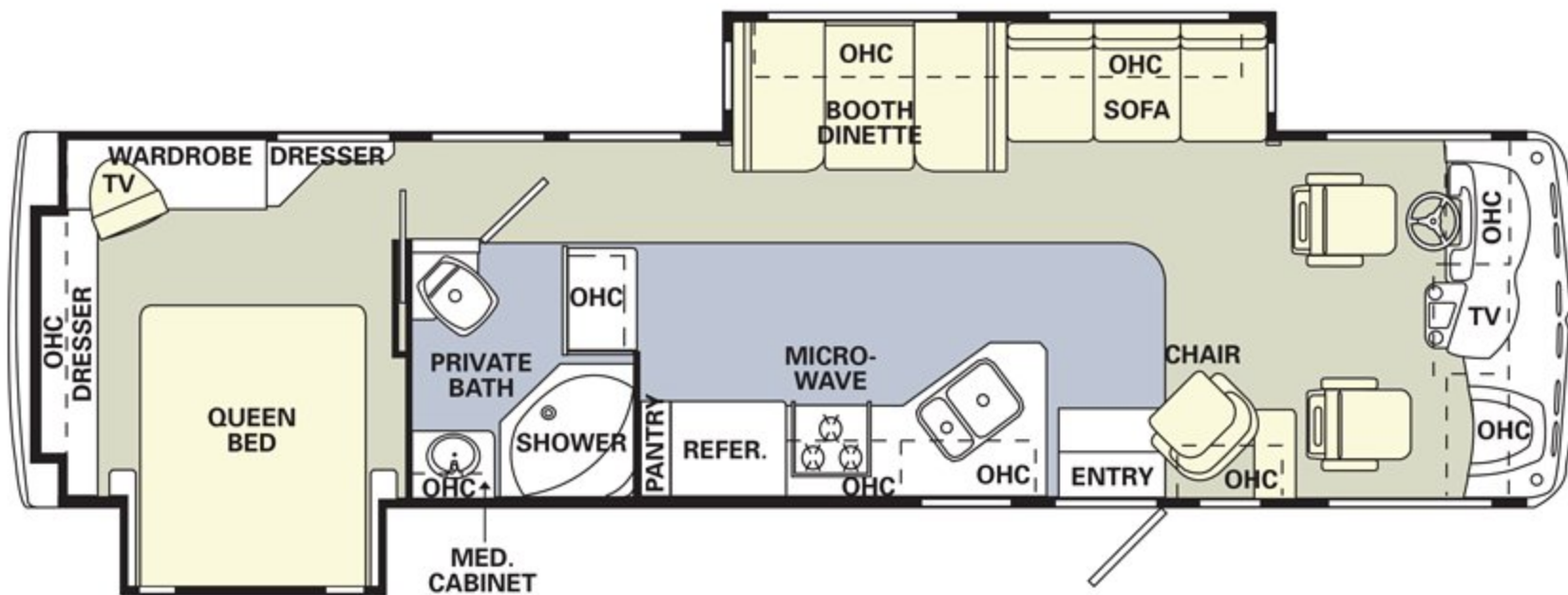
## 3 4 S B D

Options Include:  
 Bath Tub  
 Bedroom Desk  
 Fabric Electric Sofa  
 Fabric Hide-A-Bed  
 Fabric Hide-A-Bed with  
 Air Mattress  
 Fabric Swivel Recliner  
 Freestanding Dinette with  
 Wall Cabinet  
 Soft Touch Vinyl Hide-A-Bed  
 Soft Touch Vinyl Hide-A-Bed  
 with Air Mattress



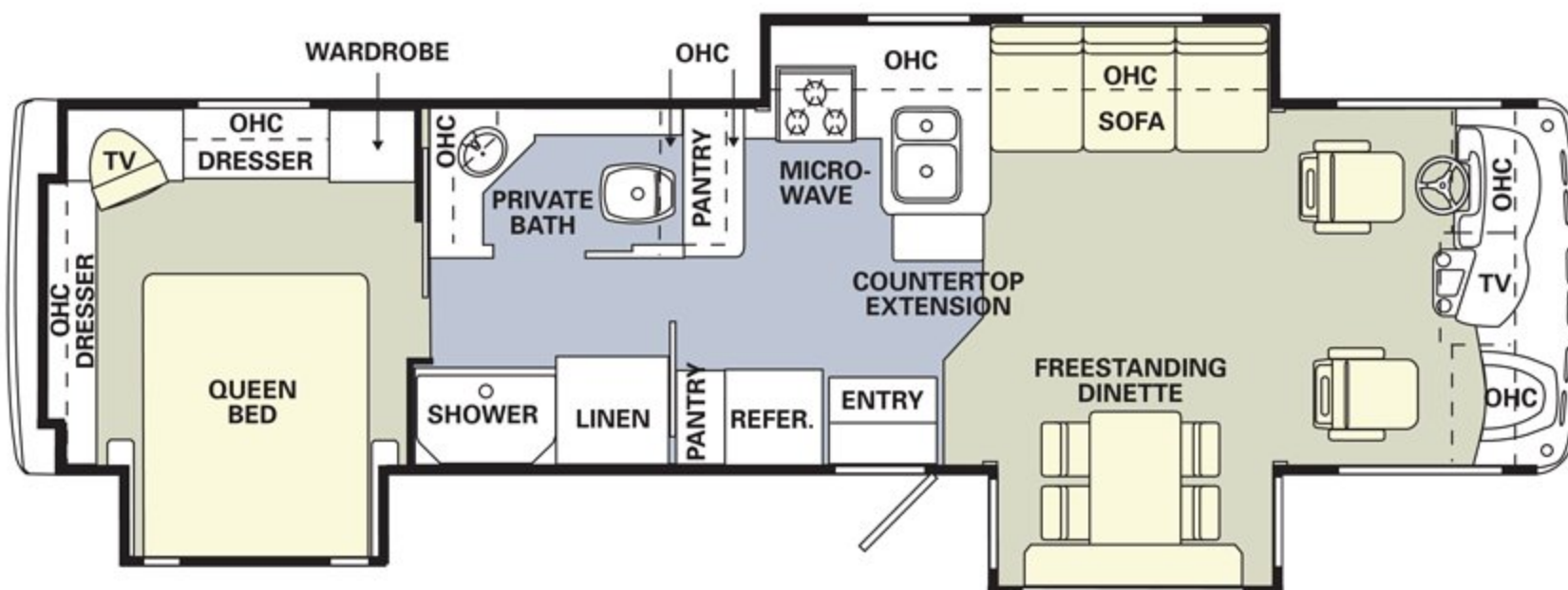
## 3 4 P B D

Options Include:  
 Bath Tub  
 Fabric Electric Sofa  
 Fabric Hide-A-Bed  
 Fabric Hide-A-Bed with  
 Air Mattress  
 Fabric Swivel Recliner  
 Freestanding Dinette with  
 Wall Cabinet  
 Soft Touch Vinyl Hide-A-Bed  
 Soft Touch Vinyl Hide-A-Bed  
 with Air Mattress



## 3 4 P D T

Options Include:  
 Bath Tub  
 Bedroom Desk  
 Fabric Electric Sofa  
 Fabric Hide-A-Bed  
 Fabric Hide-A-Bed with  
 Air Mattress  
 Soft Touch Vinyl Hide-A-Bed  
 Soft Touch Vinyl Hide-A-Bed  
 with Air Mattress



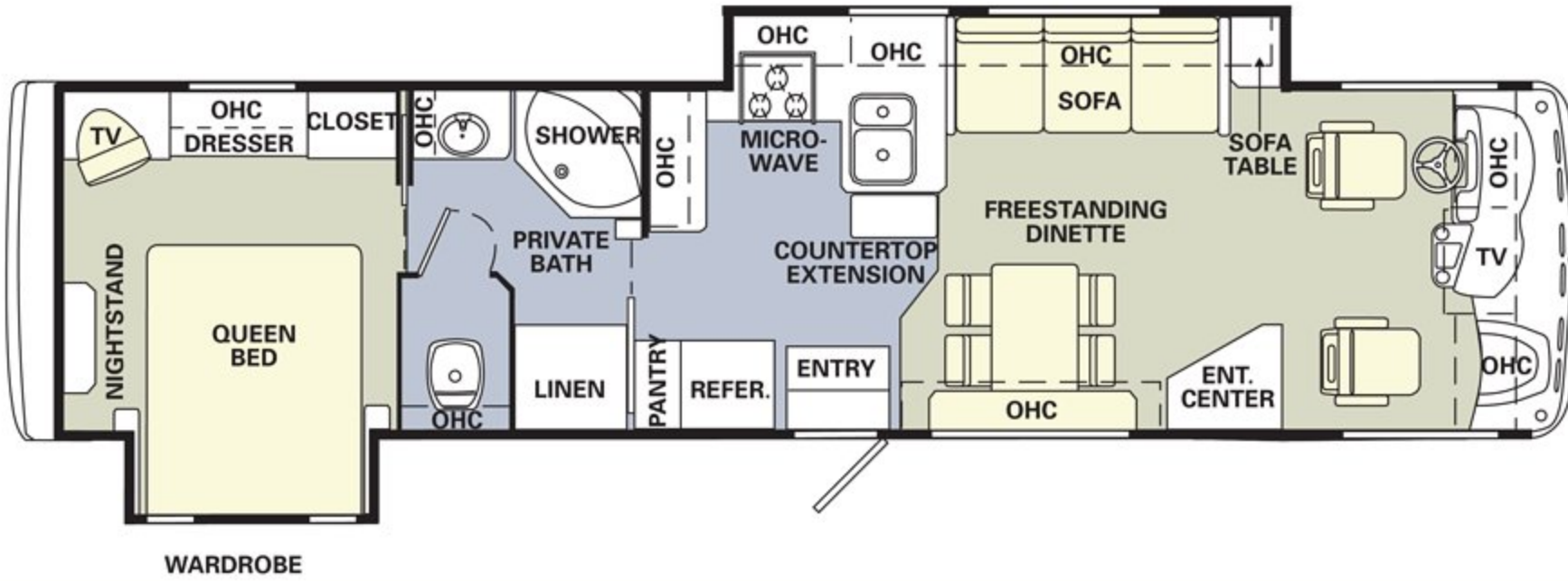
● CARPET  
 ● LINOLEUM/PLANK



## ADMIRAL SE FLOORPLANS

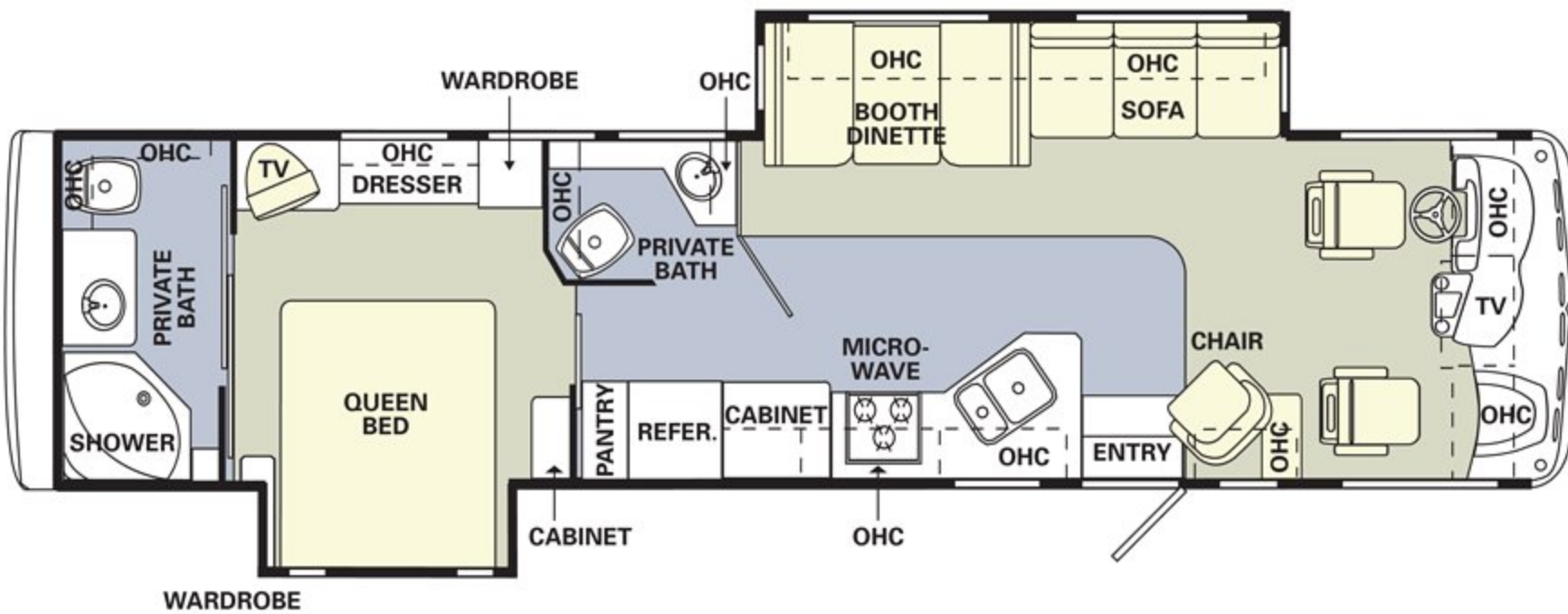
### 36 PED

Options Include:  
 Bath Tub  
 Bedroom Desk  
 Fabric Hide-A-Bed with Footrest  
 Fabric Hide-A-Bed with Footrest and Air Mattress  
 Fabric L-Sofa with Drawer  
 Soft Touch Vinyl Hide-A-Bed with Footrest  
 Soft Touch Vinyl Hide-A-Bed with Footrest and Air Mattress



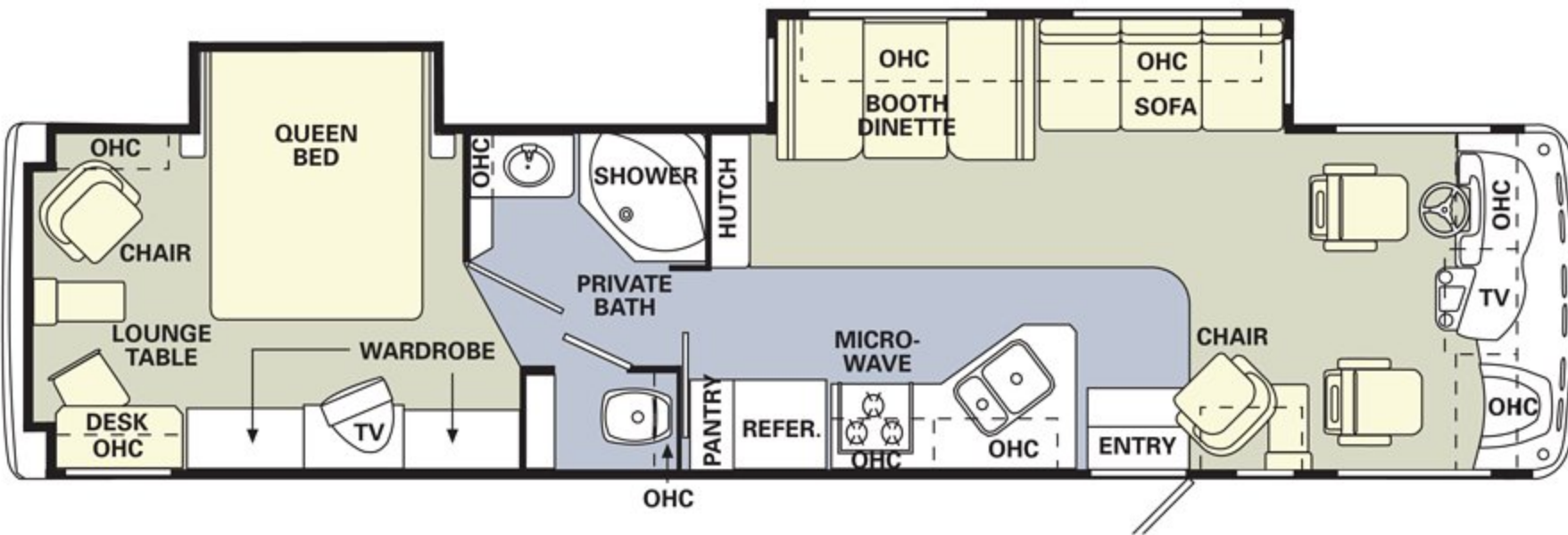
### 36 DBD

Options Include:  
 Bath Tub  
 Bedroom Desk  
 Fabric Electric Sofa  
 Fabric Hide-A-Bed  
 Fabric Hide-A-Bed with Air Mattress  
 Fabric Swivel Recliner  
 Freestanding Dinette with Wall Cabinet  
 Soft Touch Vinyl Hide-A-Bed  
 Soft Touch Vinyl Hide-A-Bed with Air Mattress



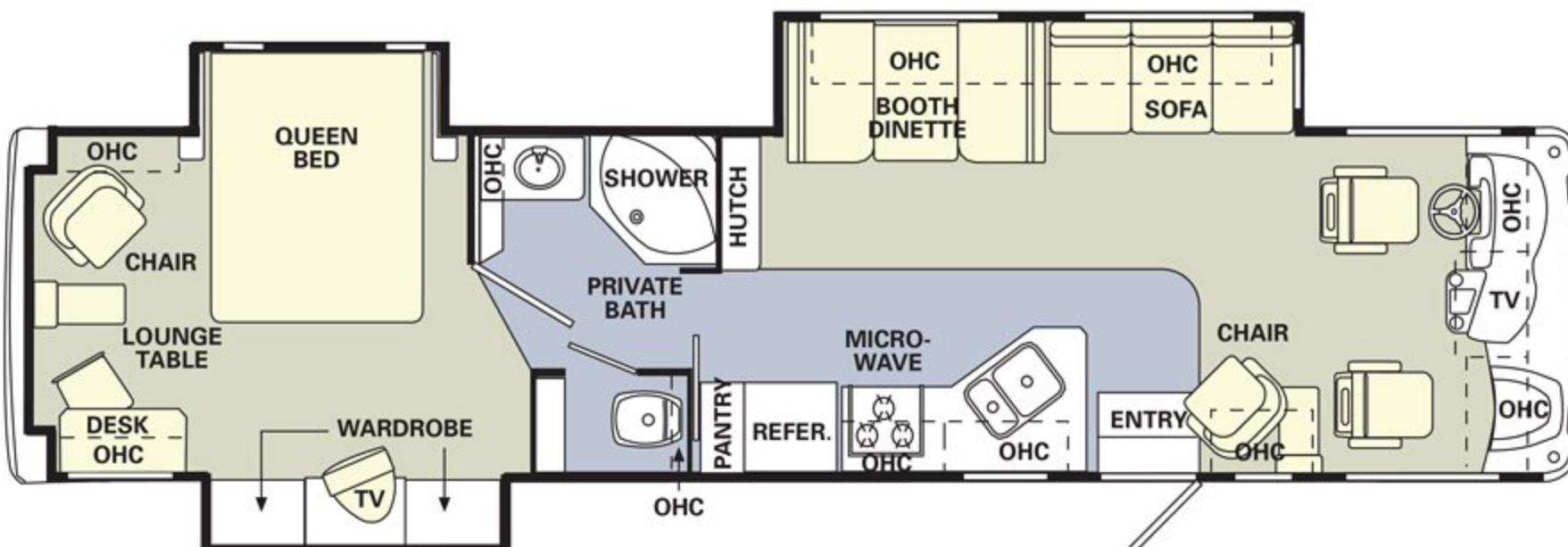
### 37 PCD

Options Include:  
 Bath Tub  
 Fabric Electric Sofa  
 Fabric Hide-A-Bed  
 Fabric Hide-A-Bed with Air Mattress  
 Fabric Swivel Barrel Chair  
 Fabric Swivel Recliner  
 Freestanding Dinette with Wall Cabinet  
 Soft Touch Vinyl Hide-A-Bed  
 Soft Touch Vinyl Hide-A-Bed with Air Mattress  
 Fabric Swivel Barrel Chair



### 37 PCT

Options Include:  
 Bath Tub  
 Fabric Electric Sofa  
 Fabric Hide-A-Bed  
 Fabric Hide-A-Bed with Air Mattress  
 Fabric Swivel Barrel Chair  
 Fabric Swivel Recliner  
 Freestanding Dinette with Wall Cabinet  
 Soft Touch Vinyl Hide-A-Bed  
 Soft Touch Vinyl Hide-A-Bed with Air Mattress





HOLIDAY RAMBLER



2004 ADMIRAL SE

**NOW YOU'RE ON YOUR WAY.**

THE MOMENT YOU TAKE TO THE ROAD IN A NEW HOLIDAY RAMBLER, YOU'LL KNOW WHAT IT MEANS TO BECOME PART OF A RICH, COLORFUL HERITAGE. BECAUSE FROM THAT MOMENT, YOU'RE INVITED TO JOIN US WHEREVER WE GATHER — AT



RALLIES AND EVENTS ACROSS THE COUNTRY. WHEN YOU PURCHASE A NEW HOLIDAY RAMBLER, YOU ARE ELIGIBLE TO RECEIVE A FREE ONE-YEAR MEMBERSHIP IN THE HOLIDAY RAMBLER CLUB. AND

TO KEEP YOU INFORMED OF ALL THE LATEST NEWS AND EVENTS, YOU'LL ALSO RECEIVE A SUBSCRIPTION TO OUR HOLIDAYS MAGAZINE. OUR WEBSITE ALSO PROVIDES VALUABLE INFORMATION AND IS A CONVENIENT WAY TO CONTACT US

ANYTIME. IN ADDITION, YOU ARE AUTOMATICALLY ENROLLED FOR ONE YEAR IN OUR OWNER ADVANTAGE PROGRAM. WITH THIS IMPRESSIVE ROADSIDE ASSISTANCE PACKAGE, MASTER CERTIFIED RVDA TECHNICIANS AND ASE CERTIFIED TECHNICIANS ARE ON CALL 24 HOURS A DAY TO HANDLE ANY PROBLEMS YOU MAY EXPERIENCE WITH YOUR COACH. THE OWNER ADVANTAGE



PROGRAM ALSO INCLUDES THE FOLLOWING BENEFITS: 24-HOUR ROADSIDE ASSISTANCE, FUEL DELIVERY, TIRE CHANGE, BATTERY JUMP START, LOCKOUT SERVICE, TRIP ROUTING AND MAPS, AND MUCH MORE.



[www.holidayrambler.com](http://www.holidayrambler.com)



**HOLIDAY RAMBLER®**

*This is Living®*

MONACO COACH CORPORATION

**(800) 245-4778**

Monaco is traded on the New York Stock Exchange under the listing MNC © 2003, Monaco Coach Corporation 0703 NPN:BROHADM Litho in USA.

