

HOLIDAY RAMBLER ✨ 2004 ATLANTIS



REDISCOVER AMERICA.





OUR QUALITY COMES IN ALL SHAPES AND SIZES.

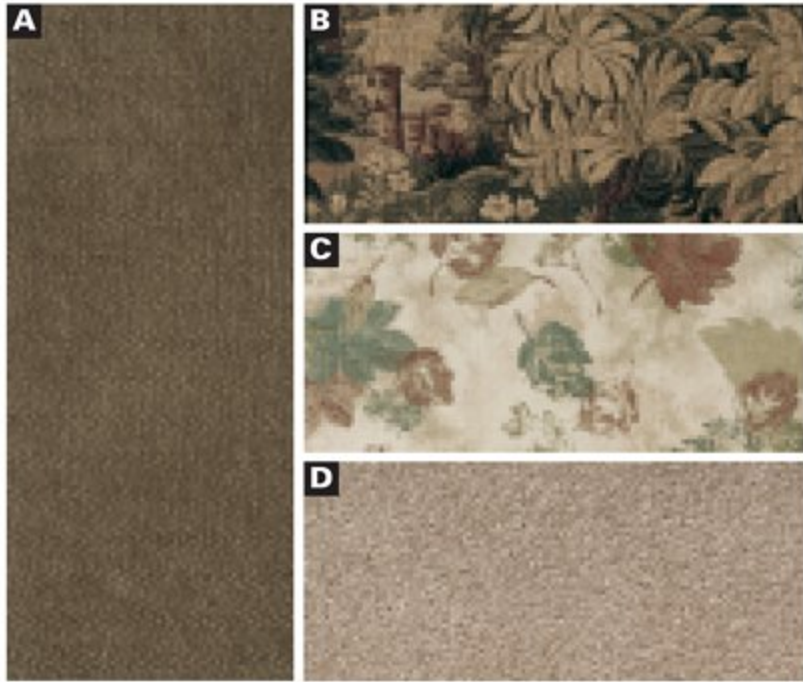


CONSIDER THE 2004 ATLANTIS BY HOLIDAY RAMBLER. IT'S A MINI-MOTORHOME THAT'S BIG ON COMFORT, CONVENIENCE, AND YES — QUALITY. AT ITS HEART IS OUR EXCLUSIVE ALUMAFRAME® SUPERSTRUCTURE FOR YEARS OF RELIABILITY AND OUR MULTI-LAYER ROOF AND WALL CONSTRUCTION FOR SUPERIOR INSULATION IN ALL KINDS OF WEATHER. AND AS YOU LOOK INSIDE, YOU'LL SEE MORE LUXURIOUS STANDARD AND OPTIONAL FEATURES THAN YOU EVER THOUGHT POSSIBLE IN THIS CLASS. ECONOMY? MANEUVERABILITY? WHATEVER YOUR REASONS FOR CHOOSING A MINI, THE 2004 ATLANTIS IS THE BEST CHOICE AROUND.



EVERY DETAIL CREATES AN EXQUISITE EXPERIENCE.

It's been 50 years since Holiday Rambler rolled out its first RV. And this is a golden opportunity to honor the thousands of families across North America who've shared the journey with us. They've come to rely on Holiday Rambler for high-quality, innovative products designed to be within the reach of every family that seeks the freedom of the open road. So here's to the last 50 years. And here's to the promise of many more.



CASTLE GATE



**BETTER
STAIN
PROTECTION**

Manufactured in, not added on. 3M Scotchgard™ Carpet Stain Release is applied during the carpet manufacturing process for a higher level of protection. Dupont Teflon® soil repellent is applied to virtually all upholstery fabric during the finishing process for superior coverage.*

*Brand and application of carpet or upholstery fabric protection may vary depending on date recreational vehicle was manufactured.



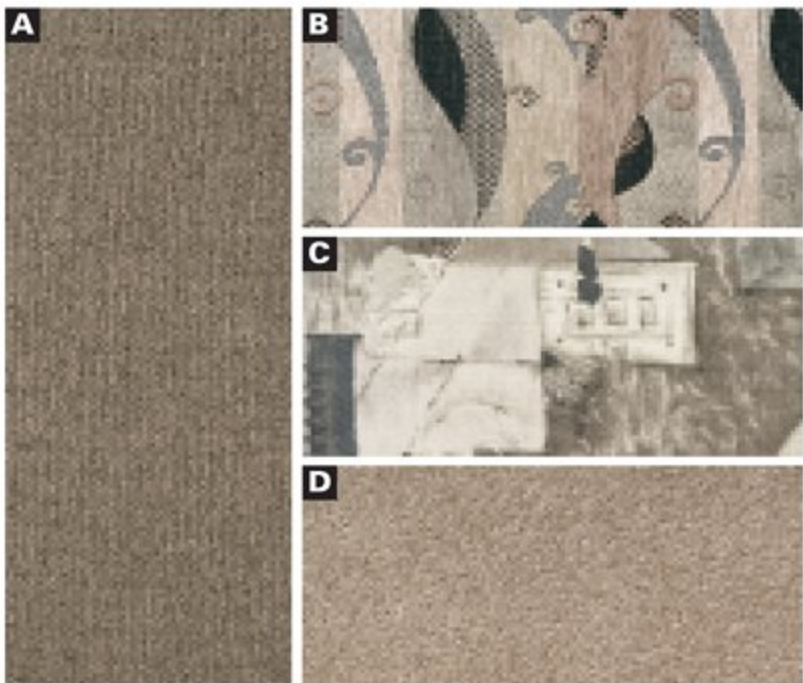
ENCHANTMENT



VINTAGE OAK



MAPLE



SPUN SILVER



REGAL CHERRY

A Sofa **B** Accent **C** Bedspread **D** Carpet

SPECIFICATIONS

Weights	24RBS	27PBD	29PB	29PBD	30PBS	31PBS
Gross Vehicle Weight Rating (Lbs.)	14,050	14,050	14,050	14,050	14,050	14,050
Gross Combined Weight Rating (Lbs.)	19,050	19,050	19,050	19,050	19,050	19,050
Front Gross Axle Weight Rating (Lbs.)	4,600	4,600	4,600	4,600	4,600	4,600
Rear Gross Axle Weight Rating (Lbs.)	9,450	9,450	9,450	9,450	9,450	9,450

Measurements	24RBS	27PBD	29PB	29PBD	30PBS	31PBS
Wheelbase	183"	192"	192"	198"	198"	208"
Overall Length	25' 1"	28' 5.5"	29' 9.5"	29' 6.5"	30' 8.5"	31' .5"
Overall Height	11' 4"	11' 4"	11' 4"	11' 4"	11' 4"	11' 4"
Interior Height	6' 6"	6' 6"	6' 6"	6' 6"	6' 6"	6' 6"
Interior Width	94.5"	94.5"	94.5"	94.5"	94.5"	94.5"
Exterior Width	100.5"	100.5"	100.5"	100.5"	100.5"	100.5"

Tank Capacities*	24RBS	27PBD	29PB	29PBD	30PBS	31PBS
Water Heater (Gal.)*	6	6	6	6	6	6
Gray Tank (Gal.)*	40	40	40	40	40	40
Black Tank (Gal.)*	40	40	40	40	40	40
Fresh Tank (Gal.)*	35	32	35	35	35	35
LP Tank (Gal.)**	24	24	24	24	24	24
Fuel Tank (Gal.)*	55	55	55	55	55	55

* All tank capacities are estimated based upon calculations provided by the tank manufacturers and represent approximate capacities. The actual "usable capacity" may be greater or less than the estimated capacities based upon fabrication and installation of the tanks.

** Actual filled LP capacity is 80% of listing due to safety shut-off required on tank.

Due to the large variety of options and floorplan arrangements available to our customers, actual weights for each unit can differ significantly. Holiday Rambler provides a weight sticker on each unit we produce which includes that unit's tank capacities and approximate weight. Consult your local Holiday Rambler dealer for unit availability and further information.

The information printed in this brochure reflects product design, fabrication, and component parts at the date of printing. The manufacturer reserves the right, at any time, to make changes in product design or material or component specifications as its sole option, without notice. This includes the substitution of components of a different brand or trade name, which will result in comparable performance. All information printed in this brochure is subject to change after the date of printing. Some features shown or mentioned in this brochure are optional and may only be available in selected floorplans. Photographs may show props or decorations that are not standard equipment on Holiday Rambler models. Holiday Rambler, the HR logo and its design, are registered trademarks. All other products and company names are trademarks and/or registered trademarks of their respective holders.

While the color of the mini-motorhome's exterior and the interior fabrics depicted in this sales brochure are fair and reasonable depictions, the colors depicted may not be an exact match of the actual colors because of the variances in photo-processing and variances caused by inserting the photographs within the sales brochure. Due to product improvements, changes during the model year and/or transcription errors that may occur, information represented within this brochure may not be accurate at the time of your purchase. If certain information is significant to your purchasing decision, please confirm the information with your dealer prior to submitting your order.

Your towed vehicle should be equipped with auxiliary brakes if the weight of the towed load exceeds 1,000 lbs.

BODY CONSTRUCTION

Standard Features

- Alumaframe® Superstructure
- Peaked Aluminum Roof with Fiberglass Insulation
- Smooth Aluminum Sidewalls
- Fiberglass Front Cap with Radius Corners to Roof Line
- ABS Radius Rear Cap Transition Application to Roof Line and Bumper
- Steel Framed Floor on Steel Trusses
- Laminated Structurwood™ Flooring
- Interior Paneling with 3/4" Insulation
- Foam Insulated Floor Framing with Luaun Backer
- Streamlined Baggage Doors with Integrated Single Handle Latches
- One-Piece Polyethylene Storage Compartment, Pass-Through Storage
- Wheel Mud Flaps
- Painted Skirts with Vinyl Exterior Graphics
- Rear Ladder
- Interior Rubber Entry Step
- Exterior Double Entry Steps with Light
- Fiberglass Running Boards
- Undercoating

FORD CHASSIS/ENGINE/SUSPENSION

Standard Features

- Ford E450 Chassis
- Electronic Fuel Injection Gasoline Engine 6.8L V10
- Cubic Inch Displacement 415"/6.8L
- 4-Speed Automatic Transmission with Overdrive
- Fuel Tank Capacity 55 Gallon
- 130 Amp Alternator
- Rear Axle Ratio 4.56:1
- Radial Tires
- Chrome Wheel Covers
- Rear Multi-Leaf Spring Suspension
- Air Bag System
- ABS Brake System
- 5,000 Lb. Hitch Receiver with Six-Point Connector
- Dash Heating and Air Conditioner System with Defroster

- One 12V Chassis Battery
- Auxiliary Start Circuit

Options

- Stainless Steel Wheel Simulators

COCKPIT

Standard Features

- CD Player/Radio with Four Speakers
- Multi-Positioned Sunvisors
- Front Privacy Drape in Cab Over Sleeping Area
- Full Length Split Bevel Cushions for Cab Over Area
- Ladder for Cab Over Area
- Intermittent Windshield Wipers
- Tilt Steering Wheel
- Cruise Control
- Power Steering
- Electric Automotive Horn
- Engine Cover Drink Tray
- Power Heated Remote Mirrors
- Fabric Pilot and Co-Pilot Recliner Seats
- Carpeted Driver and Passenger Floor Mats

Options

- Six-Way Power Pilot Seat
- Six-Way Power Co-Pilot Seat
- Opal Gray Vinyl Pilot and Co-Pilot Seats
- Instrument Panel Appliqué – Wood Grain
- Rear Vision System
- CB Prep
- AM/FM Cassette (Deletes CD Player)

APPLIANCES AND ACCESSORIES

Standard Features

- Large Double-Door Refrigerator
- High Output 3-Burner Range with Oven
- Spacesaver Microwave with Touch Control
- 19" Stereo Color TV with Remote Control (N/A: 29PB)
- 25" Stereo Color TV with Remote Control (29PB)

- TV Antenna with TV Jacks
- VCR Prep and Video Control Box with Booster
- Dual Exterior Hook-Ups for DSS and Cable
- Cable TV Hook-Up and Telephone Jacks

Options

- Large Double-Door Refrigerator with Ice Maker
- High-Output 3-Burner Cooktop with Drawers
- Spacesaver Convection Microwave with Touch Control
- VCR (N/A with DVD Player)
- DVD Player (N/A with VCR, except with Front Entertainment Center)
- DVD Player IPO VCR with Front Entertainment Center
- 13" Color TV with Remote Control in Bedroom (N/A: 24RBS, 29PB)
- 13" Color TV with Remote Control in Front of Coach (29PB)
- Built-In Radio with CD Player, over Dinette (24RBS, 29PB, 29PBD, 30PBS) Curb Side Living Area (27PBD, 31PBS)
- Satellite Dish Prep
- Exterior Entertainment Center, CD Player Radio with Two Speakers (N/A: 29PBD with Freestanding Dinette Option)
- Outdoor Barbecue Grill
- Front Entertainment Center with 25" TV, VCR, Full Length Drawer, and Side Windows (Deletes Front Window) (N/A: 29PB)
- Front Entertainment Center with 25" TV, VCR and Wrap Around Cabinets (Deletes Front and Side Windows) (N/A: 29PB)
- Fireplace (29PB)

INTERIOR

Standard Features

- Vintage Oak Cabinetry
- Raised Panel Hardwood Cabinet Doors
- Cabinet End Panels
- Black ABS Refrigerator Insert

- Decorative Wall Board
- Wallpaper Border Kitchen, Bath and Bedroom Walls
- Self-Supporting Top Hinged Overhead Storage Doors and Positive Catches on All Other Doors
- Low Friction Roller Drawer Guides
- Wood Interior Grab Handle on Cabinet at Entry Door
- Brass Cabinetry Hardware and Bath Accessories
- Integrated Cup Holder in Slide-Out next to Sofa
- Laminate Kitchen Countertop with Wood Beveled Edge, Stainless Steel Sink, Chrome Faucet and Two Sink Covers
- Kitchen Countertop Extensions (N/A: 24RBS, 29PB, 31PBS)
- Laminate Lav Countertop with Laminate Prem-Edge
- All Other Countertops Laminated with Wood Edge, except Bath Lav
- Kitchen Overhead Cabinets with Adjustable Shelf
- Kitchen Pantry with Adjustable Shelves next to Refrigerator (24RBS, 29PB, 30PBS)
- Armstrong Linoleum Flooring in Kitchen and Entryway (N/A: 29PB Entryway)
- Armstrong Linoleum Flooring in Bathroom
- Nylon Carpeting with Scotchgard™ Stain Release Pad in Living Area and Bedroom
- Soft Touch Padded Vinyl Ceiling
- Wood Slide-Out Fascia with Fabric Inserts
- Elongated Beveled Octagon Living Area Mirror (24RBS, 27PBD, 29PB, 31PBS)
- Decorative Picture on Refrigerator Wall (24RBS, 29PBD, 30PBS)
- Bath Door with Accent Trim on Hallway Side
- Wood Trim for Bath Door Opening Hallway Side
- Crown Molding in Bedroom and Living Area on All Open Walls
- Medicine Cabinet with Shelves

- Bathroom Lav Base Mirror with Wood Frame
- Towel Rack on Back of Bath Door
- Towel Bar in Bathroom
- Towel Ring in Bath Area
- Bedspread with One Decorative Pillow (27PBD, 29PBD, 30PBS, 31PBS)
- Fabric Headboard (N/A with Rear Window or Twin Beds Option) (30PBS, 31PBS)
- Mini Blinds and Valances Throughout
- Soil Repellant on Fabric, Teflon® Fabric Protection

Options

- Decors: Castle Gate, Enchantment, Spun Silver
- Wood Choice: Regal Cherry, Maple
- Day/Night Pleated Shades in Living Area and Bedroom
- Roll-Out Pantry next to Refrigerator with 4 Baskets (24RBS, 29PB, 30PBS)

FURNITURE

Standard Features

- Queen Bed (N/A: 24RBS, 29PB)
- Arched Back Wood Booth Dinette with Side Sliding Table Top and Drawers
- Jackknife Sleeper Sofa with Two Pillows (N/A: 27PBD)
- Fabric Barrel Chair (27PBD, 31PBS)

Options

- Twin Beds (N/A with Rear Window Option) (30PBS, 31PBS)
- Fabric Sofa with Fold Down Coffee Table ILO Dinette Option (27PBD)
- Freestanding Dinette with Two Freestanding Chairs and Two Folding Chairs (N/A: 29PB) (N/A with Exterior Entertainment Center 29PBD)
- Electro-Majic™ Bed, Mattress, Sleepsac and Ladder (29PB)

ELECTRICAL SYSTEMS AND LIGHTS

Standard Features

- 30 Amp 120V Distribution Panel and Cord
- 60 Amp Electronic 12V Power Converter
- Generator Prep
- One 12V House Battery
- Battery Disconnect Switches
- 12V and 110V Outlet in Cockpit Area
- Porch Light
- Exterior Power Entry Step, with Light
- Water Pump Switch in Service Bay Area and Bath
- Lights in Outside Storage Compartments
- Patio Receptacle
- Computer Hook-Up with Phone Jack in Dinette Area
- Pilot and Co-Pilot Map Lights
- Systems Control Center in Hallway
- 12V Incandescent Lights in Ceiling Throughout
- Decorative Brass Lighting; Living Room Wall Light, Dinette Overhead, Cosmetic Vanity Light, and Bedroom Wall Lights
- 12V Incandescent Lights under Living Room, Kitchen and Bedroom Overhead Cabinets

Options

- 130 Watt Inverter
- Onan® 4.0 kW Generator

PLUMBING AND LP SYSTEMS

Standard Features

- Kitchen Stainless Steel Sink with Single Lever Chrome Faucet
- Separate Chrome Faucet for Filtered Water
- Bath Lav Faucet Double Handle
- Demand Water System and Water Pump

- 6 Gallon LP Gas/Electric Water Heater with Electronic Ignition
- Winterization Valving System
- Water Heater By-Pass Valve
- Toilet with Sprayer
- No-Fuss Flush Holding Tank Rinsing System
- Shower/Step Tub
- Shower Light
- Brass Framed Shower Door with Obscure Glass

HEATING, VENTS AND AIR CONDITIONING

Standard Features

- One 13.5M BTU Air Conditioner with Ducted Air and Analog Wall Thermostat, Living Area or Kitchen Location Depending on Floorplan
- 35M BTU Electronic Ignition Furnace
- Above-Floor Ducted Heating System
- Non-Powered Roof Vent, Cab Over and Bedroom
- Non-Powered Roof Vent, Living Area or Kitchen Location Depending on Floorplan
- 12V Roof Vent in Bath
- 12V Attic Fan with Rain Sensor and Wall Thermostat above Ceiling Bed with Ceiling Bed Option (Deletes Skylight) (29PB)
- 12V Roof Vent in Bath

Options

- One 15M BTU Air Conditioner with Ducted Air and Analog Wall Thermostat, Living Area or Kitchen Location Depending on Floorplan
- One 13.5M BTU Air Conditioner with Heat Pump, Ducted Air and Analog Wall Thermostat, Living Area or Kitchen Location Depending on Floorplan
- One 15M BTU Air Conditioner with Heat Pump, Ducted Air and Analog Wall Thermostat, Living Area or Kitchen Location Depending on Floorplan

- 12V Wet Bay Heater
- Fantastic 12V Attic Fan Living Area or Kitchen Location Depending on Floorplan

WINDOWS, DOORS AND AWNINGS

Standard Features

- Tinted Single Pane Windows
- Radius Entrance Door with Obscure Glass, Screen Door and Anti-Skid Steps
- Exterior Entry Assist Handle
- Awning Rail
- Slide-Out Awnings Living Area and Bedroom (N/A: 29PB)
- Tinted Skylight in Living Area (N/A with Ceiling Bed Option) (29PB)
- Protecta Glaze Tinted Plexiglas® Skylight in Bathroom

Options

- Rear Window (Deletes Headboard, N/A with Twin Beds Option) (30PBS, 31PBS)
- Vinyl Patio Awning with White Arms

SAFETY

Standard Features

- Fire Extinguisher
- Deadbolt Lock on Entrance Door
- 120V GFI Protected Circuit
- LP Gas Detector
- Smoke Detector
- Carbon Monoxide Detector
- Pilot and Co-Pilot Three-Point Seat Belts
- Egress Windows (N/A: 29PB)

THE FAMILY ADVANTAGE



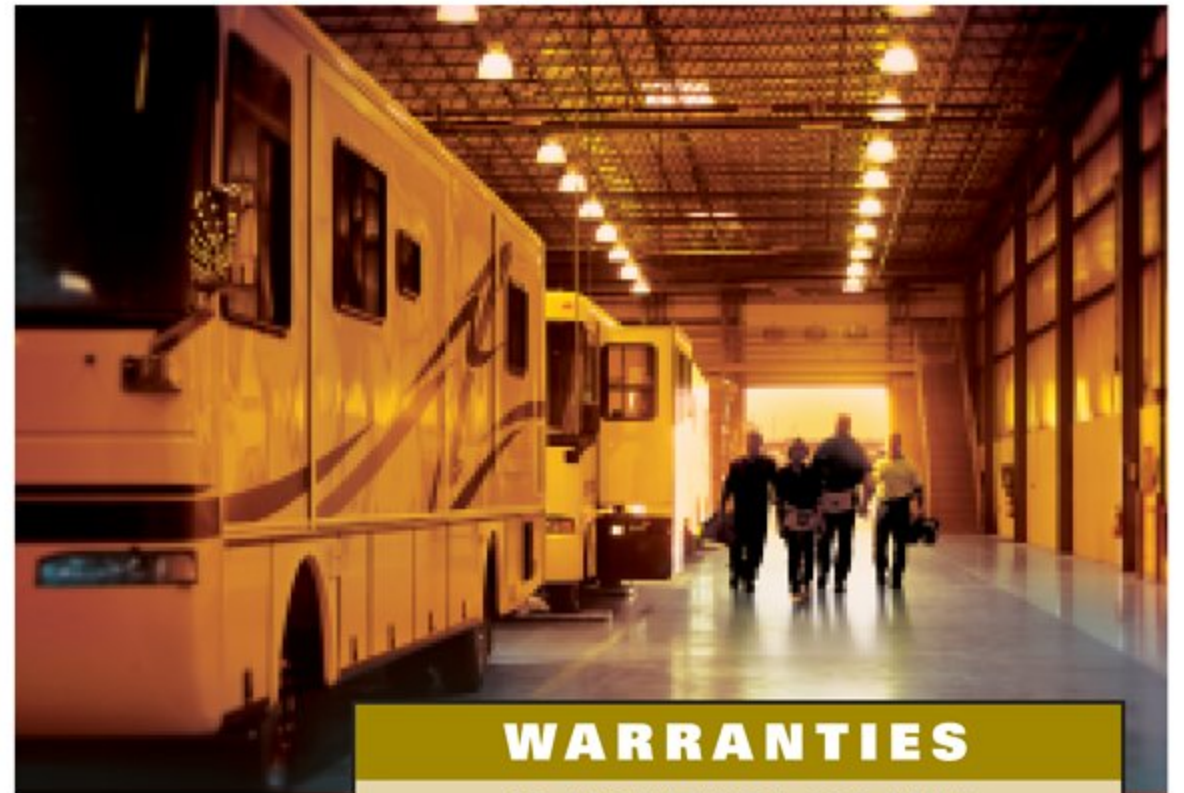
WE ENCOURAGE YOU TO COMPARE THE HOLIDAY RAMBLER FAMILY ADVANTAGE.

When you purchase a coach from Holiday Rambler, you become part of an industry-leading family of companies called Monaco Coach Corporation. What does that mean for you? It means you have access to a wider array of benefits. To begin with, your coach is built by a level of expertise that could only be achieved through the teamwork and combined experience of all our companies. You also get the benefit of our White Glove factory inspection program, for a higher level of quality assurance and added peace of mind. And your dealer will be happy to tell you about our other innovative programs, including our Extended Care service agreements. Of course, once you're on the road, you'll have access to our nationwide network of more than 350 service facilities, meaning wherever you travel, you're never far



350 SERVICE FACILITIES NATIONWIDE AND GROWING.

from a friend. Ready to roll? In a 2004 Holiday Rambler, the strength of our entire family is behind you every mile of the way.



WARRANTIES

12 MONTH/24,000 MILE
basic limited warranty

5 YEAR/50,000 MILE
limited warranty on aluminum or steel frame
structure of sidewall, roof, front and rear cap

See owner's manual for complete details.



MONACO COACH CORPORATION

Due to the large variety of options and floorplan arrangements available to our customers, actual weights for each unit can differ significantly. Holiday Rambler provides a weight sticker on each unit we produce which includes that unit's tank capacities and approximate weight. Consult your local Holiday Rambler dealer for unit availability and further information.

The information printed in this brochure reflects product design, fabrication, and component parts at the date of printing. The manufacturer reserves the right, at any time, to make changes in product design or material or component specifications as its sole option, without notice. This includes the substitution of components of a different brand or trade name, which will result in comparable performance. All information printed in this brochure is subject to change after the date of printing. Some features shown or mentioned in this brochure are optional and may only be available in selected floorplans. Photographs may show props or decorations that are not standard equipment on Holiday Rambler models. Holiday Rambler, the HR logo and its design, are registered trademarks. All other products and company names are trademarks and/or registered trademarks of their respective holders.

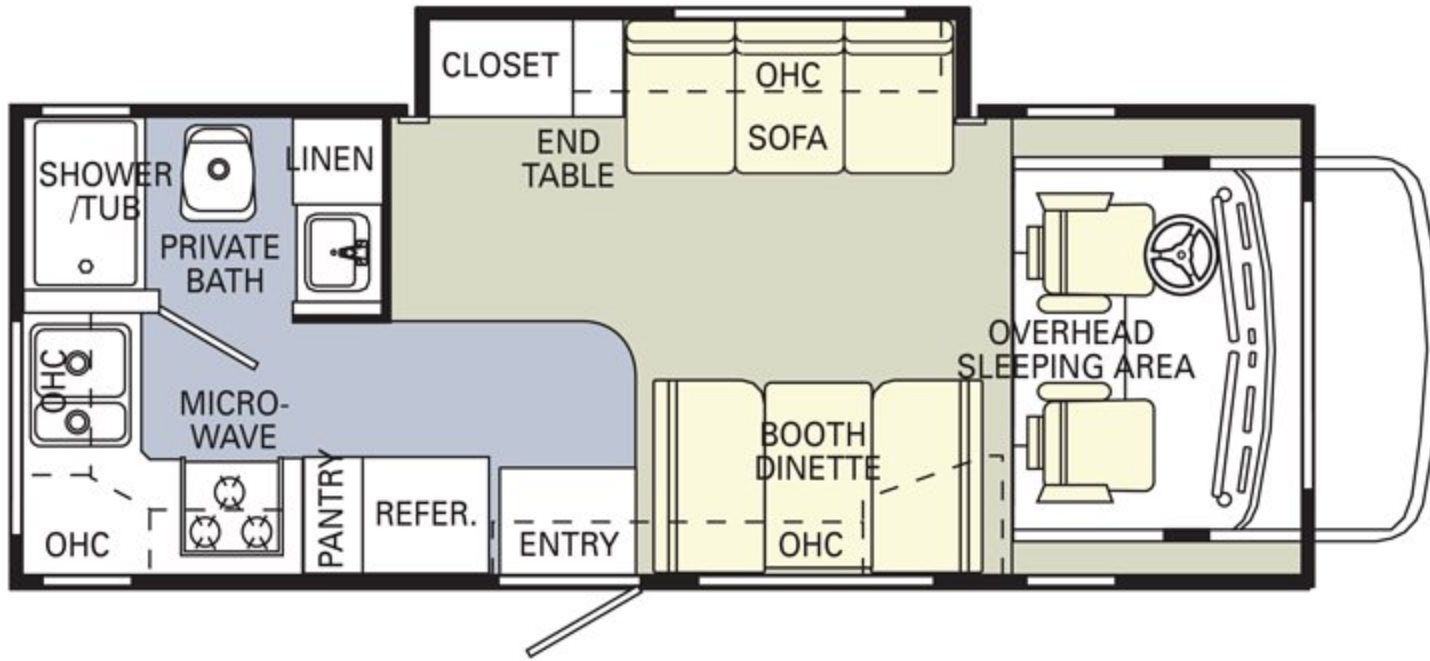
While the color of the mini-motorhome's exterior and the interior fabrics depicted in this sales brochure are fair and reasonable depictions, the colors depicted may not be an exact match of the actual colors because of the variances in photo-processing and variances caused by inserting the photographs within the sales brochure. Due to product improvements, changes during the model year and/or transcription errors that may occur, information represented within this brochure may not be accurate at the time of your purchase. If certain information is significant to your purchasing decision, please confirm the information with your dealer prior to submitting your order.

Your towed vehicle should be equipped with auxiliary brakes if the weight of the towed vehicle exceeds 1,000 lbs.

ATLANTIS FLOORPLANS

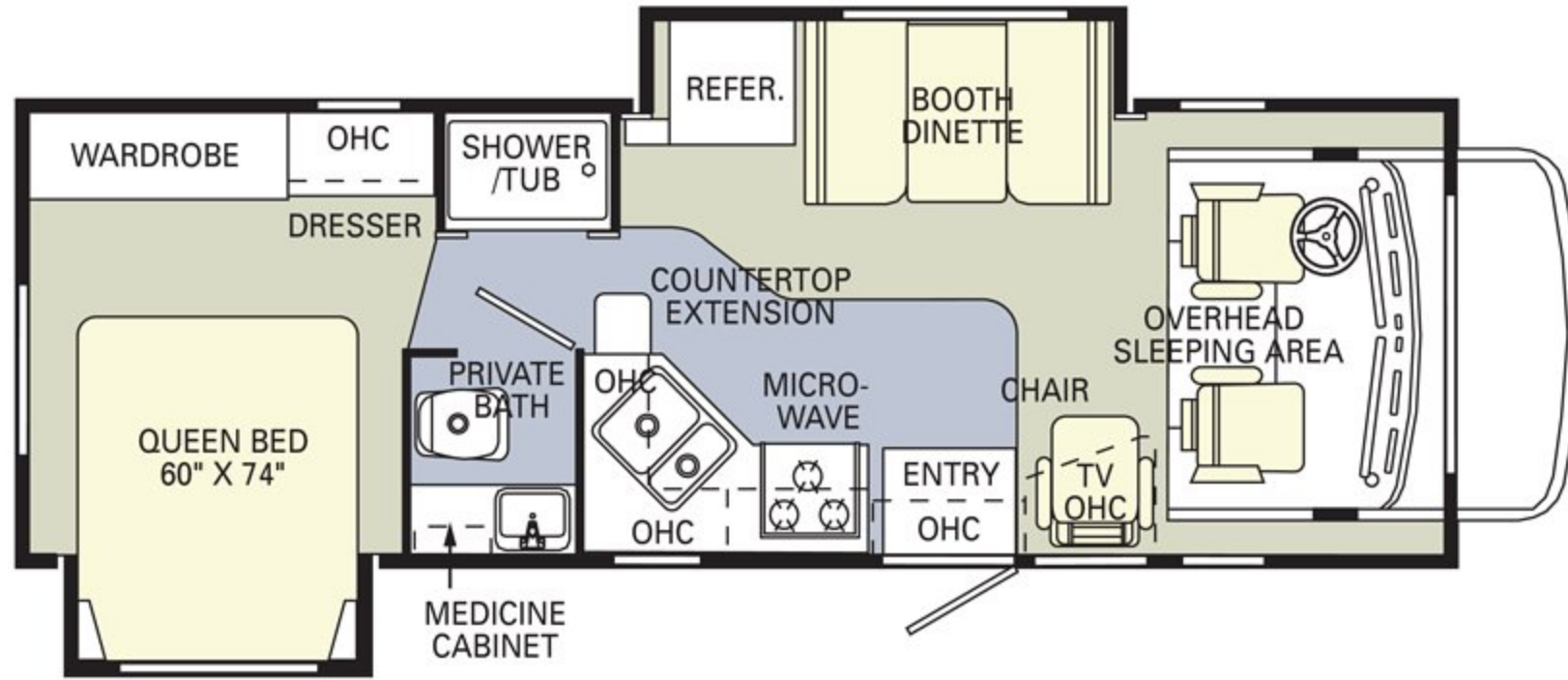
24 RBS

Options Include:
 Entertainment Center
 Deluxe Entertainment Center
 Dinette Table with 4 Chairs



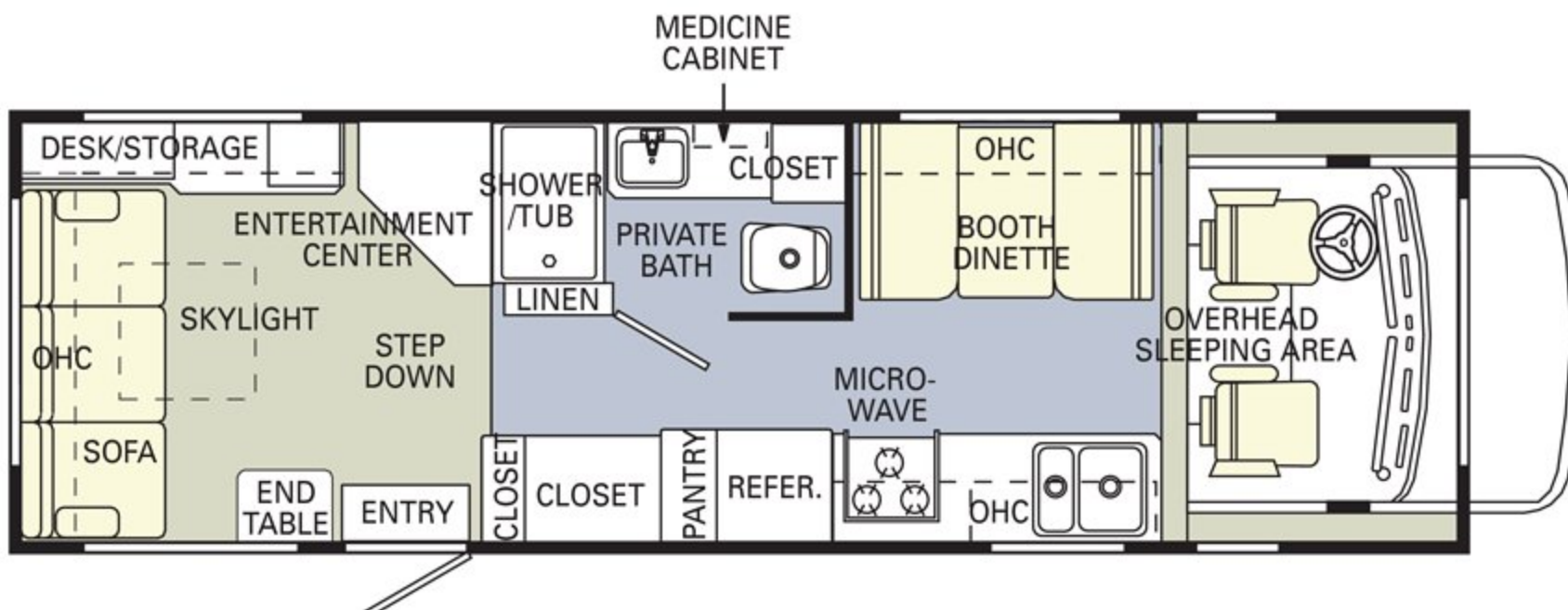
27 PBD

Options Include:
 Entertainment Center
 Deluxe Entertainment Center
 Dinette Table with 4 Chairs
 Fabric Sofa with Fold Down
 Coffee Table IPO Dinette



29 PB

Options Include:
 Electro-Majic™ Ceiling Bed

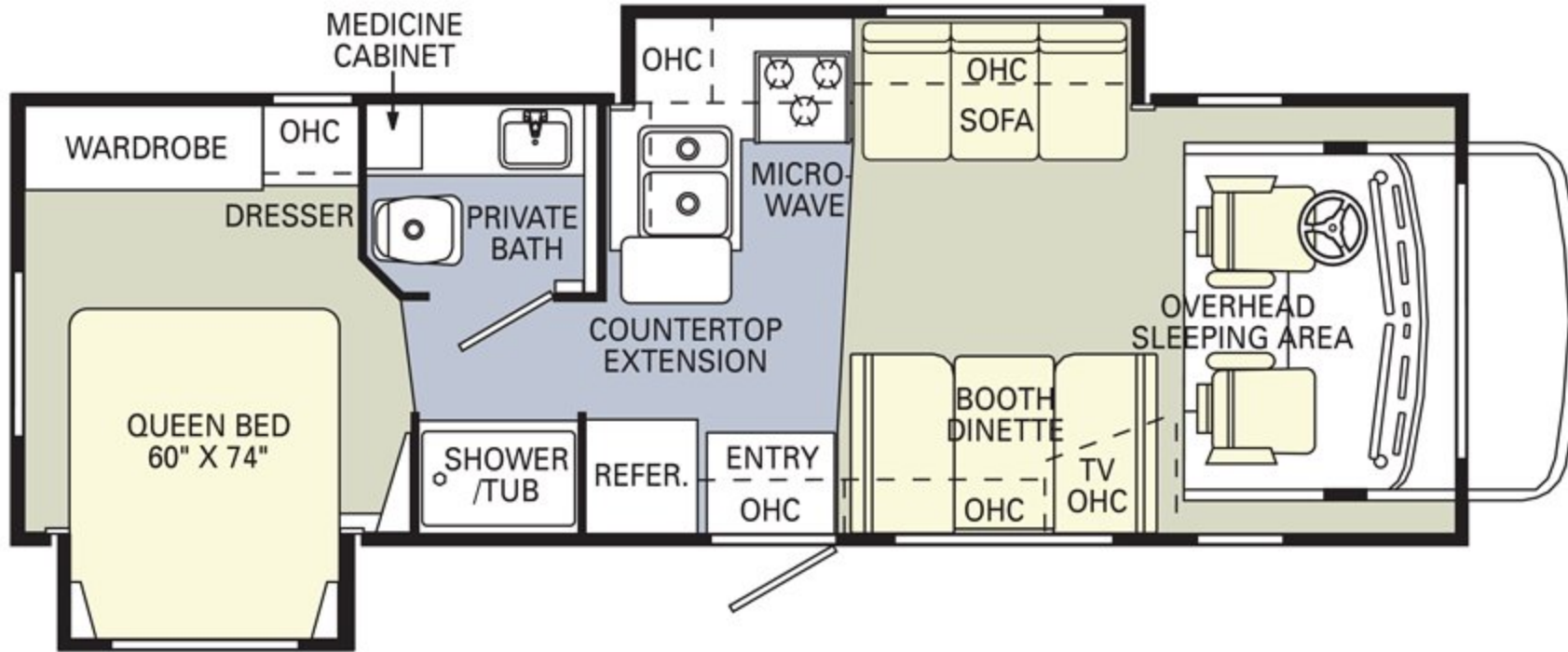


CARPET LINOLEUM

ATLANTIS FLOORPLANS

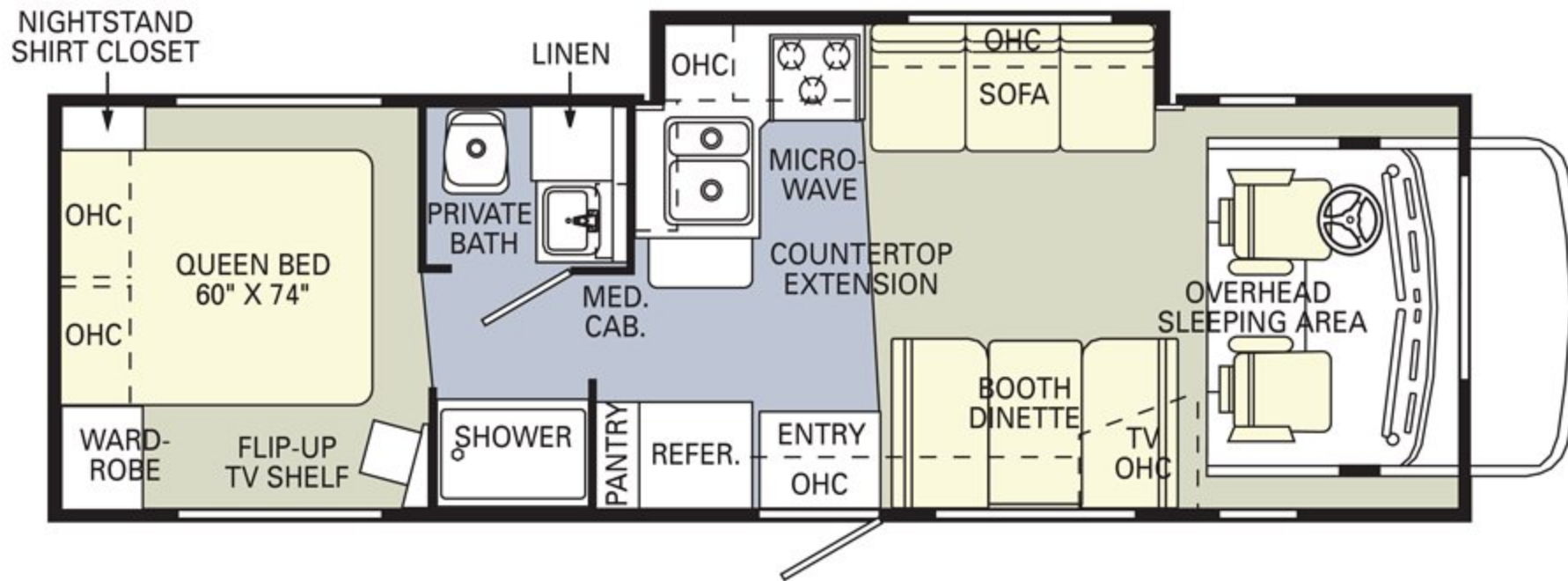
29 PBD

Options Include:
 Entertainment Center
 Deluxe Entertainment Center
 Dinette Table with 4 Chairs



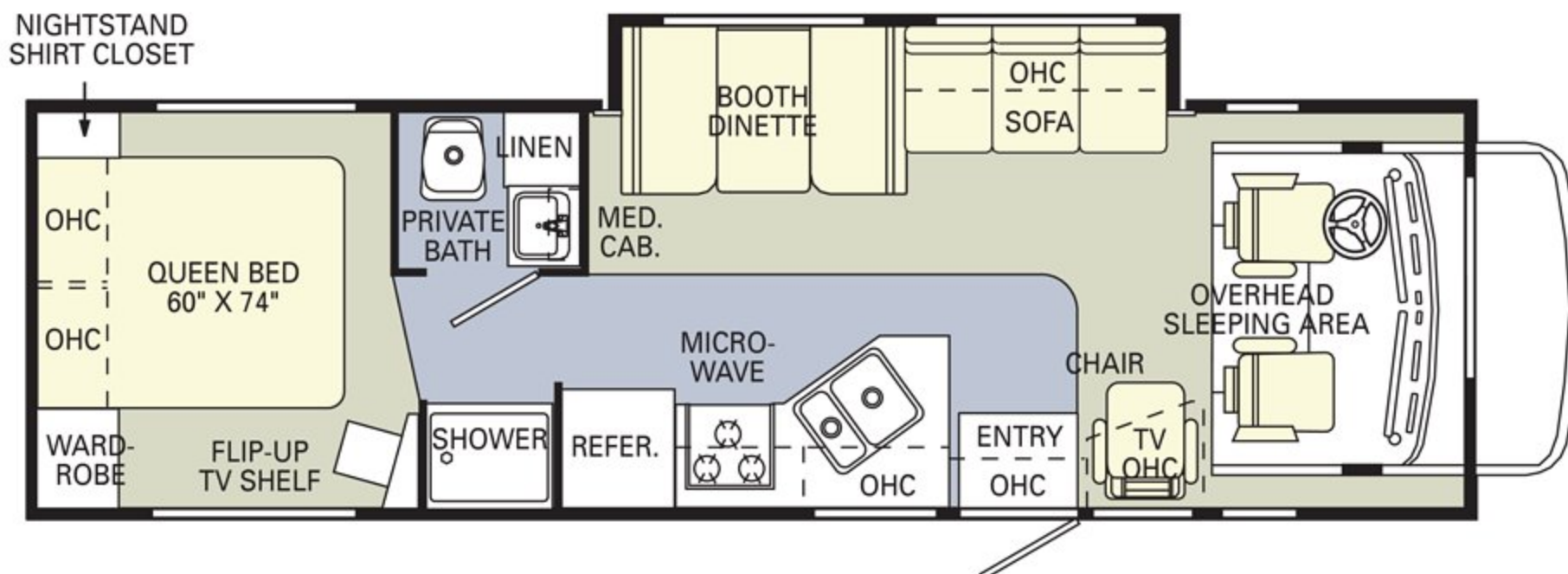
30 PBS

Options Include:
 Entertainment Center
 Deluxe Entertainment Center
 Dinette Table with 4 Chairs
 Rear Window
 Twin Beds



31 PBS

Options Include:
 Entertainment Center
 Deluxe Entertainment Center
 Dinette Table with 4 Chairs
 Rear Window
 Twin Beds



HOLIDAY RAMBLER 2004 ATLANTIS

NOW YOU'RE ON YOUR WAY.

THE MOMENT YOU TAKE TO THE ROAD IN A NEW HOLIDAY RAMBLER, YOU'LL KNOW WHAT IT MEANS TO BECOME PART OF A RICH, COLORFUL HERITAGE. BECAUSE FROM THAT MOMENT, YOU'RE INVITED TO JOIN US WHEREVER WE GATHER — AT



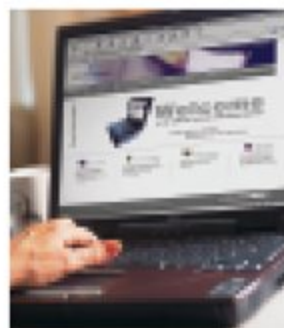
RALLIES AND EVENTS ACROSS THE COUNTRY. WHEN YOU PURCHASE A NEW HOLIDAY RAMBLER, YOU ARE ELIGIBLE TO RECEIVE A FREE ONE-YEAR MEMBERSHIP IN THE HOLIDAY RAMBLER CLUB. AND

TO KEEP YOU INFORMED OF ALL THE LATEST NEWS AND EVENTS, YOU'LL ALSO RECEIVE A SUBSCRIPTION TO OUR HOLIDAYS MAGAZINE. OUR WEBSITE ALSO PROVIDES VALUABLE INFORMATION AND IS A CONVENIENT WAY TO CONTACT US

ANYTIME. IN ADDITION, YOU ARE AUTOMATICALLY ENROLLED FOR ONE YEAR IN OUR OWNER ADVANTAGE PROGRAM. WITH THIS IMPRESSIVE ROADSIDE ASSISTANCE PACKAGE, MASTER CERTIFIED RVDA TECHNICIANS AND ASE CERTIFIED TECHNICIANS ARE ON CALL 24 HOURS A DAY TO HANDLE ANY PROBLEMS YOU MAY EXPERIENCE WITH YOUR COACH. THE OWNER ADVANTAGE



PROGRAM ALSO INCLUDES THE FOLLOWING BENEFITS: 24-HOUR ROADSIDE ASSISTANCE, FUEL DELIVERY, TIRE CHANGE, BATTERY JUMP START, LOCKOUT SERVICE, TRIP ROUTING AND MAPS, AND MUCH MORE.



www.holidayrambler.com



HOLIDAY RAMBLER
This is Living


MONACO COACH CORPORATION

(800) 245-4778

Monaco is traded on the New York Stock Exchange under the listing MNC © 2003, Monaco Coach Corporation 0703 NPN:BROHATL Litho in USA.

