

HOLIDAY RAMBLER



2004 ENDEAVOR



REDISCOVER AMERICA.



*T*HIS WINNER GETS BETTER WITH EVERY YEAR.



YEAR AFTER YEAR, THE ENDEAVOR LEADS THE WAY WITH A REMARKABLE COMBINATION OF LUXURY AND VALUE. SO WHAT'S NEW FOR 2004? AN AMAZING QUAD SLIDE-OUT FLOORPLAN. YOU SIMPLY HAVE TO SEE IT FOR YOURSELF TO EXPERIENCE THE ADDED SPACIOUSNESS AND VERSATILITY. OTHER EXCITING FEATURES INCLUDE OPTIONAL DELUXE FULL-BODY PAINT — FOR AN ATTRACTIVE TOP-OF-THE-LINE FINISH AND SUPERIOR DURABILITY, AS WELL AS THE SIRIUS SATELLITE RADIO SYSTEM (REQUIRES SUBSCRIPTION) AND POWER REELS FOR BOTH THE CORD AND WATER HOSE. LOOKING FOR A HIGH-END DIESEL COACH WITH A DOWN-TO-EARTH PRICE TAG? IT'S RIGHT HERE — THE 2004 ENDEAVOR.



40DST in Golden Heritage with Vintage Oak cabinetry.



40DST in Golden Heritage with Vintage Oak cabinetry.


The 2004 Endeavor is ready to pamper you with style and comfort. The large living area features plush furnishings in beautiful fabrics or optional Ultraleather™ coverings. In the kitchen, you'll enjoy plenty of storage space and a full complement of standard and optional appliances. You'll also appreciate the convenience of the pull-out faucet and separate faucet for filtered water. The cozy bedroom is highlighted by a 20" stereo TV, stylish bedspread and pillows, black-out shades and attractive decorative lighting. The bathroom is bright and roomy and features a solid surface countertop with integrated sink.





SHOWING OUR COLORS FOR 50 YEARS.

As part of our celebration, the Endeavor is available in a 50th Anniversary Golden Heritage Package. This special edition includes many extra interior touches, including 50th anniversary logos on the cockpit seats, upgraded fabrics and carpeting, an embroidered throw, and additional pillows in the living room and bedroom.



BETTER STAIN PROTECTION

Manufactured in, not added on. 3M Scotchgard™ Carpet Stain Release is applied during the carpet manufacturing process for a higher level of protection. Dupont Teflon® soil repellent is applied to virtually all upholstery fabric during the finishing process for superior coverage.*

*Brand and application of carpet or upholstery fabric protection may vary depending on date recreational vehicle was manufactured.



50TH ANNIVERSARY GOLDEN HERITAGE

(Optional full-body paint)



CAVIAR featuring fabrics by Martha Stewart Home Collection

(Optional full-body paint)





CORAL GABLES

(Optional full-body paint)



MEADOWLANDS

(Optional full-body paint)



PALACE GATE

(Optional full-body paint)



TUSCANY VILLA

(Optional full-body paint)



A		B			
C		D			
A		B			
C		D			
VINTAGE OAK					
A		B			
C		D			
MAPLE					
A		B			
C		D			
REGAL CHERRY					
A		B			
C		D			
REGAL CHERRY					
A		B			
C		D			
REGAL CHERRY					
A		B			
C		D			
REGAL CHERRY					
A		B			
C		D			
REGAL CHERRY					
A		B			
C		D			
REGAL CHERRY					
A		B			
C		D			
REGAL CHERRY					
A		B			
C		D			
REGAL CHERRY					

THE FAMILY ADVANTAGE



WE ENCOURAGE YOU TO COMPARE THE HOLIDAY RAMBLER FAMILY ADVANTAGE.

When you purchase a coach from Holiday Rambler, you become part of an industry-leading family of companies called Monaco Coach Corporation. What does that mean for you? It means you have access to a wider array of benefits. To begin with, your coach is built by a level of expertise that could only be achieved through the teamwork and combined experience of all our companies. Like, for example, such exclusive innovations as the Roadmaster chassis — designed specifically for each individual model of our diesel coaches. You also get the benefit of our White Glove factory inspection program, for a higher level of quality assurance and added peace of mind. And your dealer will be happy to tell you about our other innovative programs, including our Extended Care service agreements. Of course, once you're on the road, you'll have access to our nationwide network of more than 350 service facilities, meaning wherever you



350 SERVICE FACILITIES NATIONWIDE AND GROWING.

travel, you're never far from a friend. Ready to roll? In a 2004 Holiday Rambler, the strength of our entire family is behind you every mile of the way.



WARRANTIES
12 MONTH/24,000 MILE basic limited warranty
5 YEAR/50,000 MILE limited warranty on aluminum or steel frame structure of sidewall, roof, front and rear cap
3 YEAR/36,000 MILE limited warranty on Roadmaster chassis
See owner's manual for complete details.



MONACO COACH CORPORATION

Due to the large variety of options and floorplan arrangements available to our customers, actual weights for each unit can differ significantly. Holiday Rambler provides a weight sticker on each unit we produce which includes that unit's tank capacities and approximate weight. Consult your local Holiday Rambler dealer for unit availability and further information.

The information printed in this brochure reflects product design, fabrication, and component parts at the date of printing. The manufacturer reserves the right, at any time, to make changes in product design or material or component specifications as its sole option, without notice. This includes the substitution of components of a different brand or trade name, which will result in comparable performance. All information printed in this brochure is subject to change after the date of printing. Some features shown or mentioned in this brochure are optional and may only be available in selected floorplans. Photographs may show props or decorations that are not standard equipment on Holiday Rambler models. Holiday Rambler, the HR logo and its design, are registered trademarks. All other products and company names are trademarks and/or registered trademarks of their respective holders.

While the color of the motorhome's exterior and the interior fabrics depicted in this sales brochure are fair and reasonable depictions, the colors depicted may not be an exact match of the actual colors because of the variances in photo-processing and variances caused by inserting the photographs within the sales brochure. Due to product improvements, changes during the model year and/or transcription errors that may occur, information represented within this brochure may not be accurate at the time of your purchase. If certain information is significant to your purchasing decision, please confirm the information with your dealer prior to submitting your order.

Your towed vehicle should be equipped with auxiliary brakes if the weight of the towed vehicle exceeds 1,000 lbs.

SPECIFICATIONS

Weights	36PST	38PBDD	38PST	40PBDD	40PDT
Gross Vehicle Weight Rating (Lbs.)	32,000	32,000	32,000	32,000	32,000
Gross Combined Weight Rating (Lbs.)	42,000	42,000	42,000	42,000	42,000
Gross Axle Weight Rating (Front) (Lbs.)	12,000	12,000	12,000	12,000	12,000
Gross Axle Weight Rating (Rear) (Lbs.)	20,000	20,000	20,000	20,000	20,000

Measurements					
Wheelbase	216"	242"	242"	256"	256"
Overall Length	36' 7"	38' 9"	38' 9"	39' 11"	39' 11"
Overall Height (with A/C)	12'	12'	12'	12'	12'
Interior Height	78"	78"	78"	78"	78"
Interior Width	94.5"	94.5"	94.5"	94.5"	94.5"
Exterior Width	100.5"	100.5"	100.5"	100.5"	100.5"

Tank Capacity*					
Water Heater (Gal.)*	10	10	10	10	10
Gray Tank (Gal.)*	60	60	60	60	60
Black Tank (Gal.)*	39	39	39	39	39
Fresh Tank (Gal.)*	95	95	95	95	95
LP Tank (Gal.)**	38	38	38	38	38
Fuel Tank (Gal.)*	100	100	100	100	100

Weights	40PST	40DST	40PRT	40PAQ	40PDQ
Gross Vehicle Weight Rating (Lbs.)	32,000	32,000	32,000	32,000	32,000
Gross Combined Weight Rating (Lbs.)	42,000	42,000	42,000	42,000	42,000
Gross Axle Weight Rating (Front) (Lbs.)	12,000	12,000	12,000	12,000	12,000
Gross Axle Weight Rating (Rear) (Lbs.)	20,000	20,000	20,000	20,000	20,000

Measurements					
Wheelbase	256"	256"	256"	256"	256"
Overall Length	39' 11"	39' 11"	39' 11"	39' 11"	39' 11"
Overall Height (with A/C)	12'	12'	12'	12'	12'
Interior Height	78"	78"	78"	78"	78"
Interior Width	94.5"	94.5"	94.5"	94.5"	94.5"
Exterior Width	100.5"	100.5"	100.5"	100.5"	100.5"

Tank Capacity*					
Water Heater (Gal.)*	10	10	10	10	10
Gray Tank (Gal.)*	60	60	60	60	60
Black Tank (Gal.)*	39	39	39	39	39
Fresh Tank (Gal.)*	95	95	95	95	95
LP Tank (Gal.)**	38	38	38	38	38
Fuel Tank (Gal.)*	100	100	100	100	100

* All tank capacities are estimated based upon calculations provided by the tank manufacturers and represent approximate capacities. The actual "usable capacity" may be greater or less than the estimated capacities based upon fabrication and installation of the tanks.

** Actual filled LP capacity is 80% of listing due to safety shut-off required on tank.

BODY CONSTRUCTION

Standard Features

- Alumaframe® Superstructure
- Steel Cage Cockpit Construction
- Peaked Aluminum Roof with Fiberglass Insulation
- Smooth Gel Coat Fiberglass Exterior Walls
- Front and Rear Molded Fiberglass Caps with Integrated Bumpers
- Laminated Structurwood™ Flooring
- Flush Mount Power Step Well Cover (N/A: 40PDT)
- Foam Insulated Underbelly with Luaun Backer
- Baggage Doors with Integrated Single Handle Latches
- Wheel Mud Flaps
- Painted Mask and Skirt with Vinyl Exterior Graphics
- Entry Step Storage
- Rear Ladder

Options

- 3M® Film Front Mask
- Full Length Holiday Rambler Mud Flap
- Storage Bay Slide-Out Tray (Pass-Through)
- Chrome Power Heated Remote Exterior Mirrors
- Deluxe Full-Body Paint

COCKPIT

Standard Features

- Fiberglass Automotive Dash with Beige Instrumentation Panel
- CD Player/Radio with Six Speakers
- Color Rear Vision System with Audio
- Intermittent Windshield Wipers
- Audible Turn Signals
- Tilt/Telescopic Steering Wheel
- Power Steering
- Dual Roof Mounted Air Horns
- Cup Holder
- Ultraleather™ Pilot and Co-Pilot Seats with Six-Way Power Pilot Seat
- Carpet Driver and Passenger Floor Mats

- Adjustable Accelerator and Brake Pedals
- CB Prep with Antenna

Options

- Six-Way Power Co-Pilot Seat
- Six-Way Power Co-Pilot Seat with Power Footrest
- Extra-Wide Six-Way Power Co-Pilot Seat with Power Footrest
- Power Sunvisors
- Pilot and Co-Pilot Pull-Down Sun Shades
- Ten-Disc CD Changer
- Sirius Satellite Radio System (Requires Subscription)
- Dash Fans (Requires Power Sunvisors)

APPLIANCES AND ACCESSORIES

Standard Features

- Double-Door Refrigerator with Raised Panel Doors
- Recessed High-Output 3-Burner Cooktop
- Spacesaver Convection Microwave with Touch Control
- 24" Stereo Color TV with Remote in Living Area
- Living Area Stereo TV Wired through Ceiling Speakers
- 20" Stereo Color TV with Remote in Bedroom
- TV Antenna and Booster
- Cable TV Hook-Up and Telephone Jacks
- Digital Satellite System Prep
- Washer/Dryer Prep

Options

- Double-Door Refrigerator with Ice Maker
- Four-Door Refrigerator with Ice Maker
- High-Output 3-Burner Range with Oven
- Stainless Steel Microwave
- Combination Washer/Dryer
- Home Theater System

with DVD Player

- DVD Player
- Stereo VCR
- Exterior Entertainment Center (N/A: 40PDT, 40PAQ)
- Fully Automatic Digital Satellite System

INTERIOR

Standard Features

- Vintage Oak Cabinetry
- Solid Wood Square Raised Panel Cabinet Doors
- Low Friction Roller Drawer Guides
- Satin Finish Cabinet Hardware
- Solid Surface Kitchen Countertop with Stainless Steel Sink and Two Sink Covers
- Solid Surface/Tile Backsplash in Kitchen
- Tip Out Tray under Kitchen Sink
- Waste Basket Storage
- Four-Compartment Drawer Organizer
- Roll-Out Pantry (N/A with Four-Door Refrigerator)
- Ceramic Tile Flooring in Kitchen and Bathroom
- Padded Vinyl Ceiling
- Nylon Carpeting and Pad in Living Area and Bedroom
- Pleated Day/Night Shades with Black Outs in Bedroom
- Solid Surface Bathroom Countertop with Integrated Sink
- Medicine Cabinet with Shelves
- Bathroom Mirror
- Towel Bars and Rings in Bath Area
- Solid Surface Nightstand Tops
- Solid Surface Bedroom Dresser Top
- Bedspread with Pillows

Options

- Regal Cherry Cabinetry
- Maple Cabinetry
- Tile at Entry (Std. on Side Entries)
- Laminated Plank Flooring in Kitchen and Bath
- Solid Surface Kitchen Sink

FURNITURE

Standard Features

- Queen Bed
- Fabric Easy Bed Sofa with Drawer – Curbside (36PST, 38PST, 40PST, 40DST, 40PRT, 40PDQ)
- Fabric Easy Bed Sofa with Drawer – Driver's Side (N/A: 36PST)
- Fabric Barrel Chair(s) – Curbside (38PBDD, 40PBDD, 40PDT)
- Fabric Barrel Chair – Driver's Side (36PST)
- Ultraleather™ Euro Recliner with Ottoman – Curbside (40PAQ)
- Legless Dinette Table with Two Freestanding Chairs
- Two Folding Dinette Chairs

Options

- Fabric Recliner (N/A: 38PST, 40PST, 40DST, 40PRT, 40PAQ, 40PDQ)
- Ultraleather™ Recliner (N/A: 38PST, 40PST, 40DST, 40PRT, 40PAQ, 40PDQ)
- Ultraleather™ Euro Recliner with Ottoman (N/A: 38PST, 40PST, 40DST, 40PRT, 40PAQ, 40PDQ)
- Fabric Magic Bed (Driver's Side) (N/A: 36PST)
- Fabric Hide-A-Bed with Air Mattress (Driver's Side) (N/A: 36PST)
- Fabric Hide-A-Bed Sofa (Driver's Side) (N/A: 36PST, 40PAQ)
- Round Dinette Table with Two Freestanding Chairs (40PAQ)
- Fabric Electric Sofa (Driver's Side) (N/A: 36PST)
- Ultraleather™ J-Lounge with Drawer (Curbside) (N/A: 38PBDD, 40PDT, 40PAQ)
- Ultraleather™ Easy Bed Sofa with Drawer (Curbside) (N/A: 38PBDD, 40PDT, 40PAQ)
- Computer Table (Curbside) (40PBDD)
- Booth Dinette (N/A: 36PST, 40PDT, 40PAQ)

ELECTRICAL SYSTEMS AND LIGHTS

Standard Features

- 50 Amp 120V Distribution Panel and Power Cord
- Onan® 6.5 kW LP Generator on Slide-Out Tray
- Four 6V Deep Cycle Batteries
- Two 12V Heavy Duty Chassis Batteries
- Battery Disconnect Switches
- 1500 Watt Inverter
- Porch Light
- Side Docking Lights
- Pilot and Co-Pilot Map Lights
- Power Entry Step with Light
- Water Pump Switch
- Lights in Outside Storage Compartment
- 110V Receptacles inside Storage Compartment
- Underhood Utility Light
- 110V/12V/Phone Receptacle in Dash Area
- Systems Control Center
- Fluorescent Ceiling Lights Throughout
- Decorative Dining Light
- Cosmetic Vanity Lights in Bathroom
- Decorative Wall Lights in Bedroom
- Decorative Wall Lights in Living Area

Options

- Onan® 7.5 kW Quiet Diesel Generator
- Energy Management System
- Solar Panel
- Power Cord Reel

HEATING, VENTS AND AIR CONDITIONING

Standard Features

- Dual 13.5M BTU Air Conditioner with Ducted Air, Wall Thermostat and Heat Pumps
- Two 25M BTU Electronic Ignition Furnaces for Dual Zone Heating (N/A: 38PBDD and 40PBDD)
- 40M BTU Electronic Ignition Furnace (38PBDD and 40PBDD)
- Electronic AC/Heat Climate Control System
- In-Floor Ducted Heating System
- 12V Attic Fan in Kitchen
- 12V Wet Bay Heater

Options

- 12V Attic Fan in Bath
- Fantastic Attic Fan with Rain Sensor (Per Location) (Kitchen, Private Bath)

PLUMBING AND LP SYSTEMS

Standard Features

- Demand Water System and Water Pump
- 10-Gallon LP Gas/Electric Water Heater with Electronic Ignition
- Winterization Valving System
- Gravity and Pressurized Water Fill
- Pull-Out Kitchen Faucet
- Separate Faucet for Filtered Water in Kitchen
- One-Piece Fiberglass Shower (N/A: 40DST)
- Glass Shower Door with Satin Frame
- Single Handle Shower Faucet
- Bath Tub (40DST)
- China Toilet
- Insulated Systems Compartment with Easy Access to Hook-Up
- Service Bay Faucet

Options

- Power Water Hose Reel
- Bath Tub

SAFETY

Standard Features

- Fire Extinguisher
- Deadbolt Lock on Entrance Door
- 120V GFI Protected Circuit (Kitchen, Bathroom, Exterior)
- LP Gas Detector
- Smoke Detector
- Carbon Monoxide Detector
- Pilot and Co-Pilot Three-Point Seat Belts (Lap and Shoulder)
- Third Brake Safety Light
- Egress Window

WINDOWS, DOORS AND AWNINGS

Standard Features

- Radius Dual Pane Safety Glass Dark Tinted Slider Windows
- Entry Door with Removable Screen
- Entry Assist Handle
- Tinted Skylight in Bathroom
- Skylights in Curbside Slide-Out (40PAQ)
- Patio Awning with Color Coordinated Hardware
- Slide-Out Topper Awnings

Options

- Carefree® Automatic Patio Awning
- Window Awning

CHASSIS/ENGINE/SUSPENSION

Standard Features

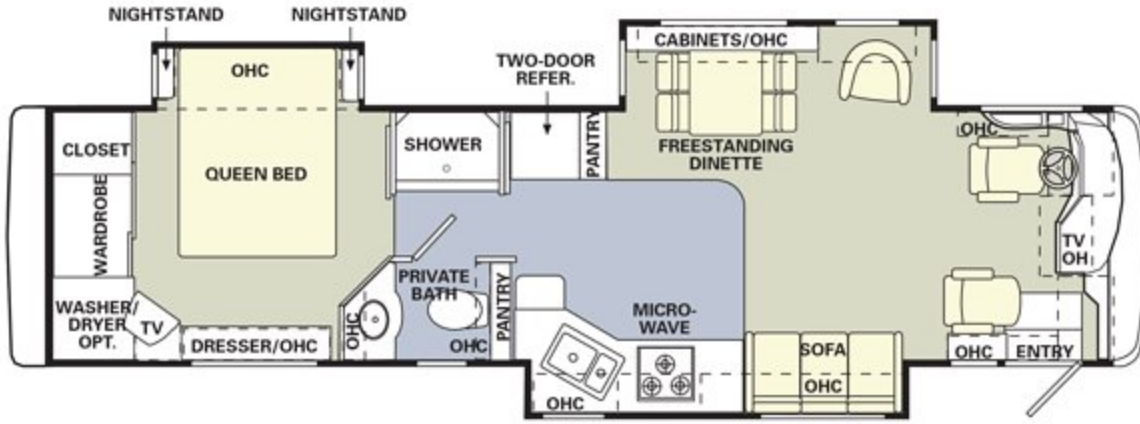
- Roadmaster RR8R-Series Chassis
- Cummins® ISC 330 HP Diesel Engine with Allison® 3000 MH 6-Speed World Transmission and Electronic Shifter
- Torque: 950 lbs./ft. Max. Net at 1,400 RPM
- Cubic Inch Displacement: 504.5"/8.3L
- 160 Amp Alternator
- Rear Axle Ratio: 4.30:1
- Dual Fuel Fill
- Radial Tires: 275/70R/22.5
- Eight Air Bag Suspension with Eight Gas Shocks
- Anti-Lock Braking System with Full Air Brakes (Drum)
- Automatic Traction Control
- Pac Exhaust Brake
- Auto Slack Adjusters
- Fuel and Water Separator
- Fuel Filter
- Rear Side Air Intake
- Engine Block Heater
- Air Cleaner Restriction Indicator
- Hydraulic Leveling System
- 10,000 Lb. Hitch Receiver* with Six-Point Connector
- Undercoating

Options

- Polished Aluminum Wheels

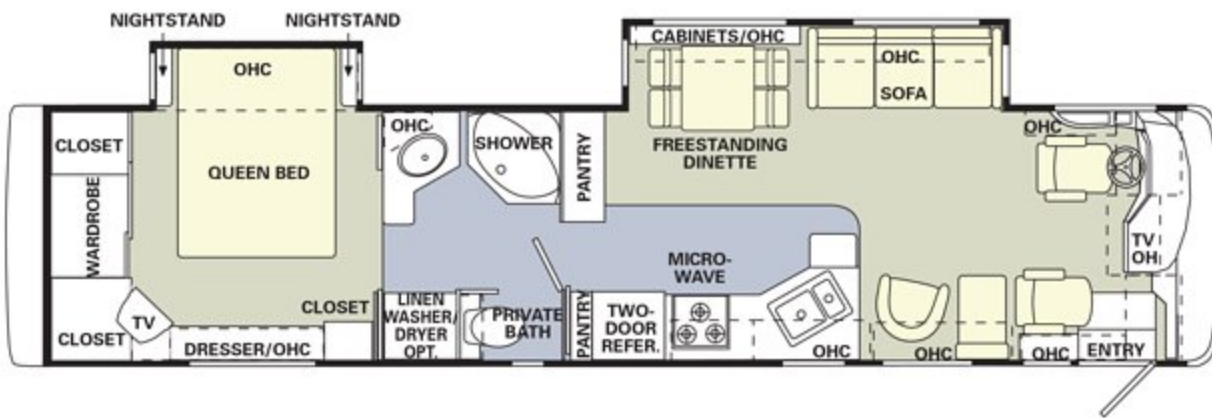
* Your towed vehicle should be equipped with auxiliary brakes if the weight of the towed load exceeds 1,000 lbs.

ENDEAVOR FLOORPLANS



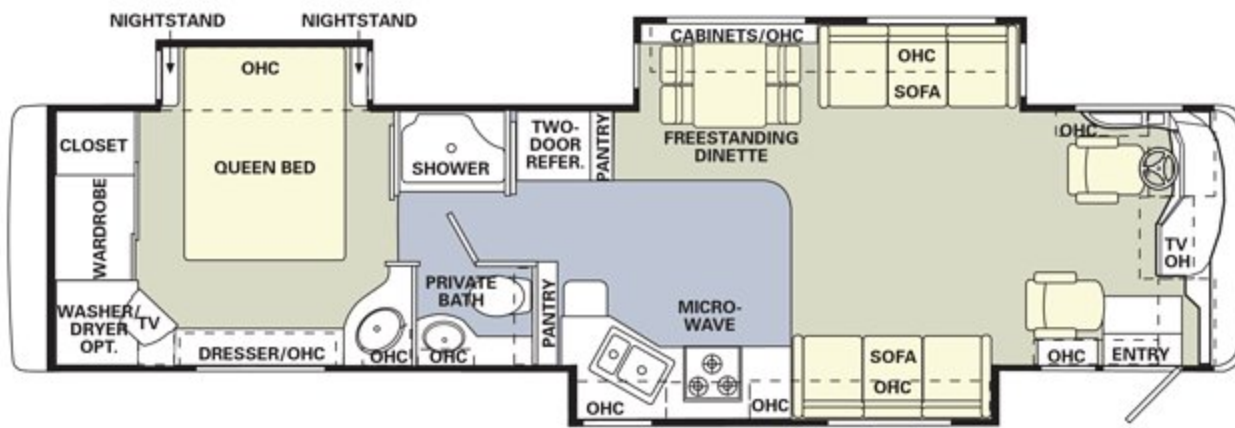
36 PST

- Options Include:
 Bath Tub
 Easy Bed Sofa
 J-Lounge
 Recliner
 Euro Recliner with Ottoman



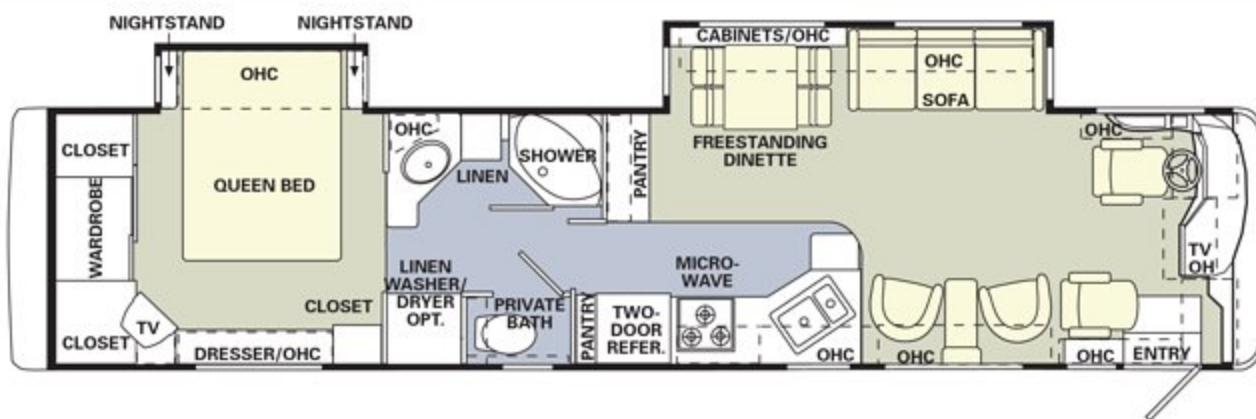
38 PBDD

- Options Include:
 Bath Tub
 Booth Dinette
 Fabric Electric Sofa
 Fabric Magic Bed Sofa
 Hide-A-Bed Sofa
 Recliner
 Euro Recliner with Ottoman
 Hide-A-Bed Sofa with Air Mattress



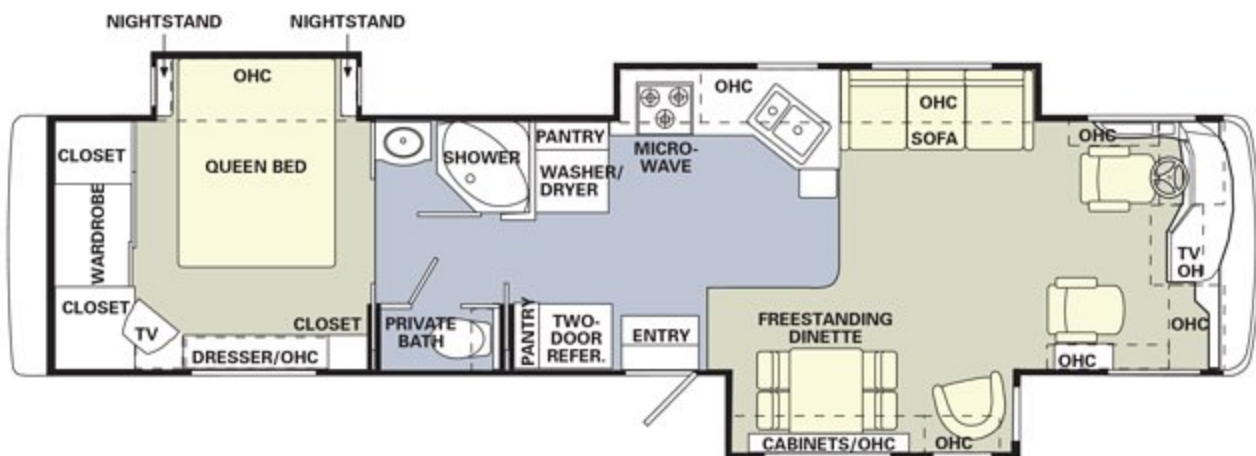
38 PST

- Options Include:
 Bath Tub
 Booth Dinette
 Fabric Electric Sofa
 Fabric Magic Bed Sofa
 Hide-A-Bed Sofa
 Easy Bed Sofa
 J-Lounge
 Hide-A-Bed Sofa with Air Mattress



40 PBDD

- Options Include:
 Bath Tub
 Booth Dinette
 Fabric Electric Sofa
 Fabric Magic Bed Sofa
 Hide-A-Bed Sofa
 Easy Bed Sofa
 J-Lounge
 Recliner
 Computer Table
 Hide-A-Bed Sofa with Air Mattress



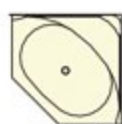
40 PDT

- Options Include:
 Bath Tub
 Fabric Electric Sofa
 Fabric Magic Bed Sofa
 Hide-A-Bed Sofa
 Recliner
 Euro Recliner with Ottoman
 Hide-A-Bed Sofa with Air Mattress

OPTIONAL ITEMS:

CARPET

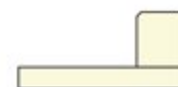
TILE/
PLANK OPTION



Bath Tub



Booth Dinette



Computer Table

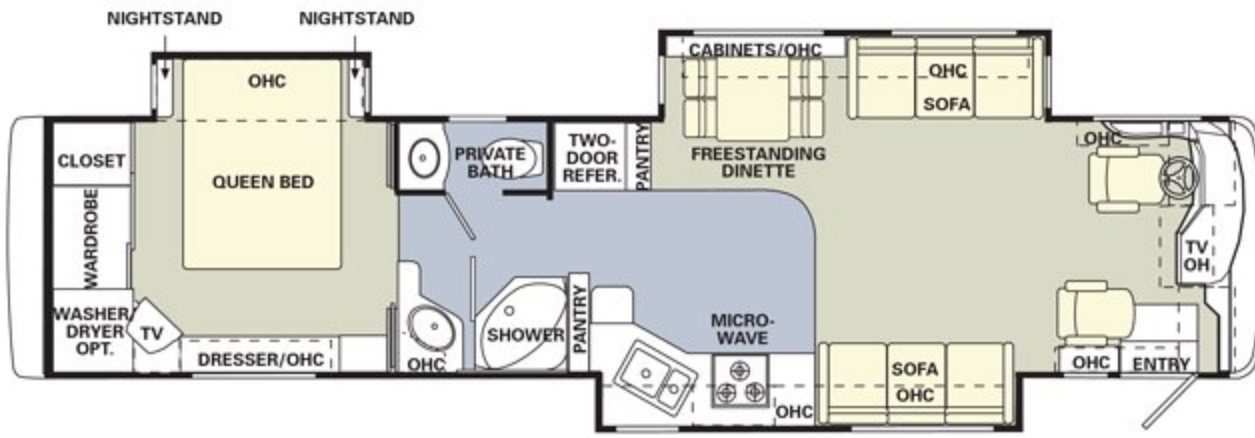


Euro Recliner with Ottoman



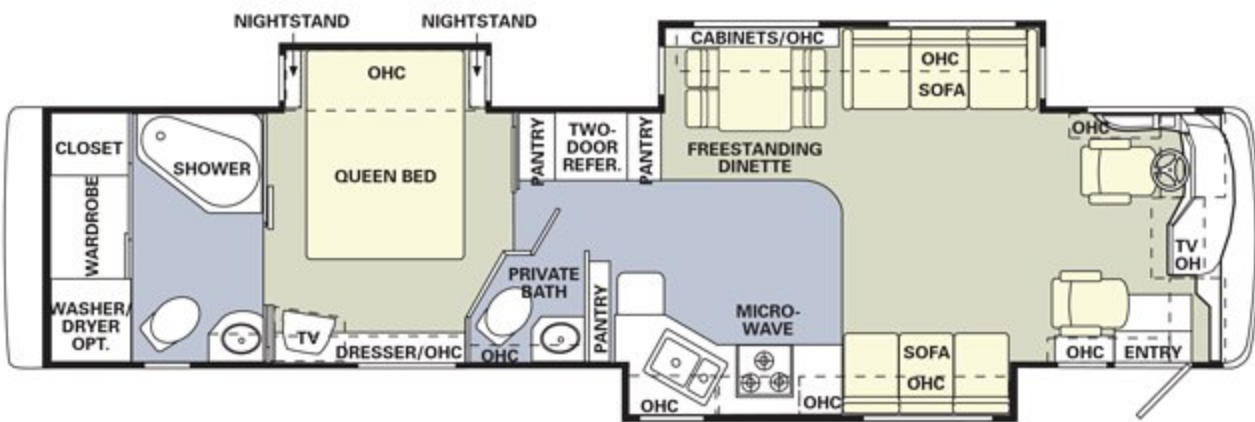
Electric Sofa

ENDEAVOR FLOORPLANS



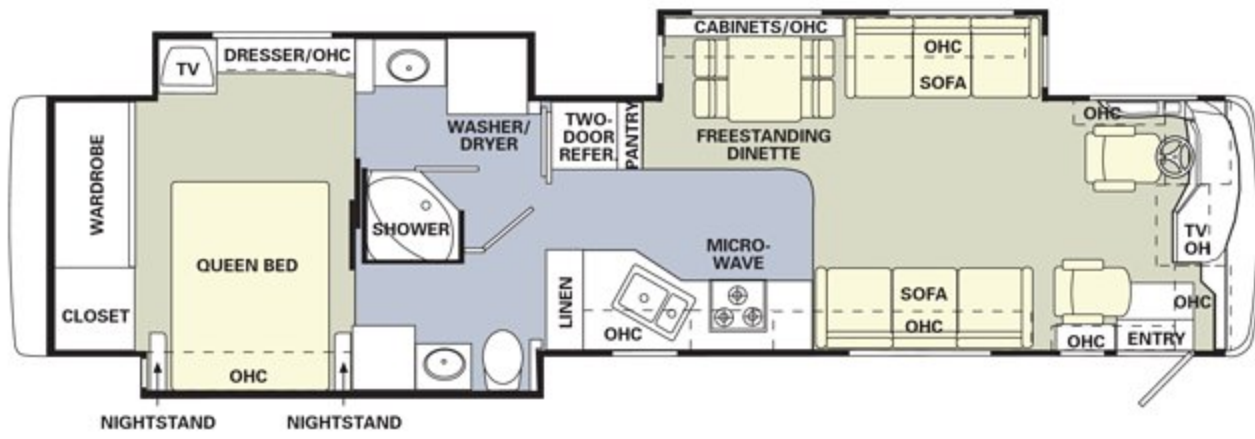
40PST

- Options Include:
- Bath Tub
 - Booth Dinette
 - Fabric Electric Sofa
 - Fabric Magic Bed Sofa
 - Hide-A-Bed Sofa
 - Easy Bed Sofa
 - J-Lounge
 - Hide-A-Bed Sofa with Air Mattress



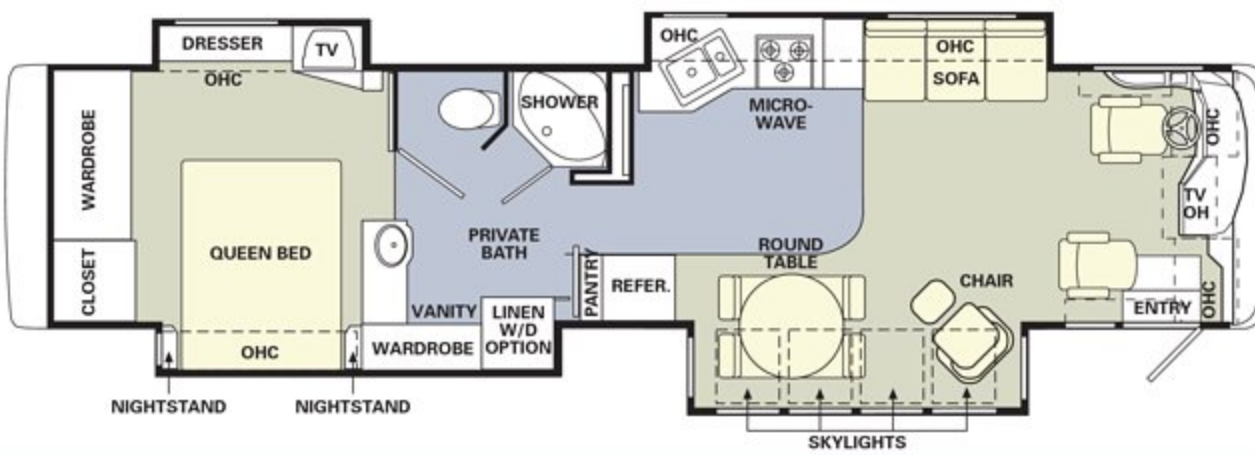
40DST

- Options Include:
- Bath Tub
 - Booth Dinette
 - Fabric Electric Sofa
 - Fabric Magic Bed Sofa
 - Hide-A-Bed Sofa
 - Easy Bed Sofa
 - J-Lounge
 - Hide-A-Bed Sofa with Air Mattress



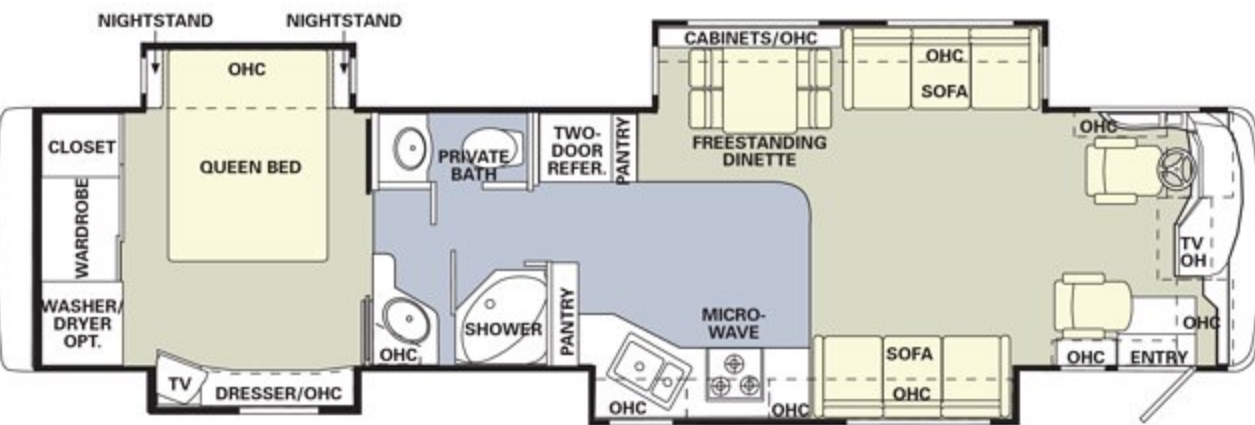
40PRT

- Options Include:
- Bath Tub
 - Booth Dinette
 - Fabric Electric Sofa
 - Fabric Magic Bed Sofa
 - Hide-A-Bed Sofa
 - Easy Bed Sofa
 - J-Lounge
 - Hide-A-Bed Sofa with Air Mattress



40PAQ

- Options Include:
- Bath Tub
 - Booth Dinette
 - Fabric Electric Sofa
 - Hide-A-Bed Sofa
 - Easy Bed Sofa
 - J-Lounge
 - Recliner
 - Euro Recliner with Ottoman
 - Hide-A-Bed Sofa with Air Mattress

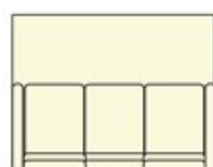


40PDQ

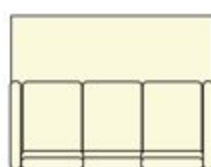
- Options Include:
- Bath Tub
 - Booth Dinette
 - Fabric Electric Sofa
 - Fabric Magic Bed Sofa
 - Hide-A-Bed Sofa
 - Easy Bed Sofa
 - J-Lounge
 - Hide-A-Bed Sofa with Air Mattress



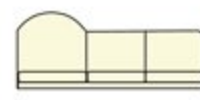
Fabric or Leather Recliner



Hide-A-Bed Sofa



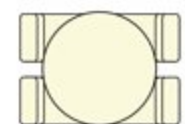
Easy Bed Sofa



J-Lounge



Magic Bed



Round Dinette Table with Two Chairs

HOLIDAY RAMBLER  2004 ENDEAVOR

NOW YOU'RE ON YOUR WAY.

THE MOMENT YOU TAKE TO THE ROAD IN A NEW HOLIDAY RAMBLER, YOU'LL KNOW WHAT IT MEANS TO BECOME PART OF A RICH, COLORFUL HERITAGE. BECAUSE FROM THAT MOMENT, YOU'RE INVITED TO JOIN US WHEREVER WE GATHER — AT



RALLIES AND EVENTS ACROSS THE COUNTRY. WHEN YOU PURCHASE A NEW HOLIDAY RAMBLER, YOU ARE ELIGIBLE TO RECEIVE A FREE ONE-YEAR MEMBERSHIP IN THE HOLIDAY RAMBLER CLUB. AND

TO KEEP YOU INFORMED OF ALL THE LATEST NEWS AND EVENTS, YOU'LL ALSO RECEIVE A SUBSCRIPTION TO OUR HOLIDAYS MAGAZINE. OUR WEBSITE ALSO PROVIDES VALUABLE INFORMATION AND IS A CONVENIENT WAY TO CONTACT US

ANYTIME. IN ADDITION, YOU ARE AUTOMATICALLY ENROLLED FOR ONE YEAR IN OUR OWNER ADVANTAGE PROGRAM. WITH THIS IMPRESSIVE ROADSIDE ASSISTANCE PACKAGE, MASTER CERTIFIED RVDA TECHNICIANS AND ASE CERTIFIED TECHNICIANS ARE ON CALL 24 HOURS A DAY TO HANDLE ANY PROBLEMS YOU MAY EXPERIENCE WITH YOUR COACH. THE OWNER ADVANTAGE



PROGRAM ALSO INCLUDES THE FOLLOWING BENEFITS: 24-HOUR ROADSIDE ASSISTANCE, FUEL DELIVERY, TIRE CHANGE, BATTERY JUMP START, LOCKOUT SERVICE, TRIP ROUTING AND MAPS, AND MUCH MORE.



www.holidayrambler.com



HOLIDAY RAMBLER
This is Living

MONACO COACH CORPORATION

(800) 245-4778

Monaco is traded on the New York Stock Exchange under the listing MNC © 2003, Monaco Coach Corporation 0703 NPN:BROHEND Litho in USA.

