

**HOLIDAY RAMBLER** ✨ **2004 PRESIDENTIAL**





# THIS FIFTH WHEEL IS DESIGNED TO SURPRISE YOU.



WELCOME TO A TOWABLE THAT LEADS ITS CLASS IN LUXURY — THE 2004 PRESIDENTIAL FIFTH WHEEL. THIS YEAR, WE'RE FEATURING 12 REMARKABLE FLOORPLANS, INCLUDING TWO AMAZING QUADRUPLE SLIDE-OUT MODELS. AND WE'RE GIVING YOU MORE OPTIONS THAN EVER BEFORE TO HELP YOU CREATE THE ULTIMATE LIVING SPACE, KITCHEN AND ENTERTAINMENT PACKAGE. YES, THIS IS THE FIFTH WHEEL OF YOUR DREAMS. AND FOR 2004, IT ALL COMES TRUE.



36RLT in Tranquil Garden with Vintage Oak cabinetry.



## EVERY DETAIL CREATES AN EXQUISITE EXPERIENCE.

As part of our celebration, the Presidential Fifth Wheel is available in a 50th Anniversary Golden Heritage Package. This special edition includes many extra interior touches, including upgraded fabrics, a unique kitchen countertop design and an embroidered throw in the living room.



### BETTER STAIN PROTECTION

Manufactured in, not added on. 3M Scotchgard™ Carpet Stain Release is applied during the carpet manufacturing process for a higher level of protection. Dupont Teflon® soil repellent is applied to virtually all upholstery fabric during the finishing process for superior coverage.\*

\*Brand and application of carpet or upholstery fabric protection may vary depending on date recreational vehicle was manufactured.

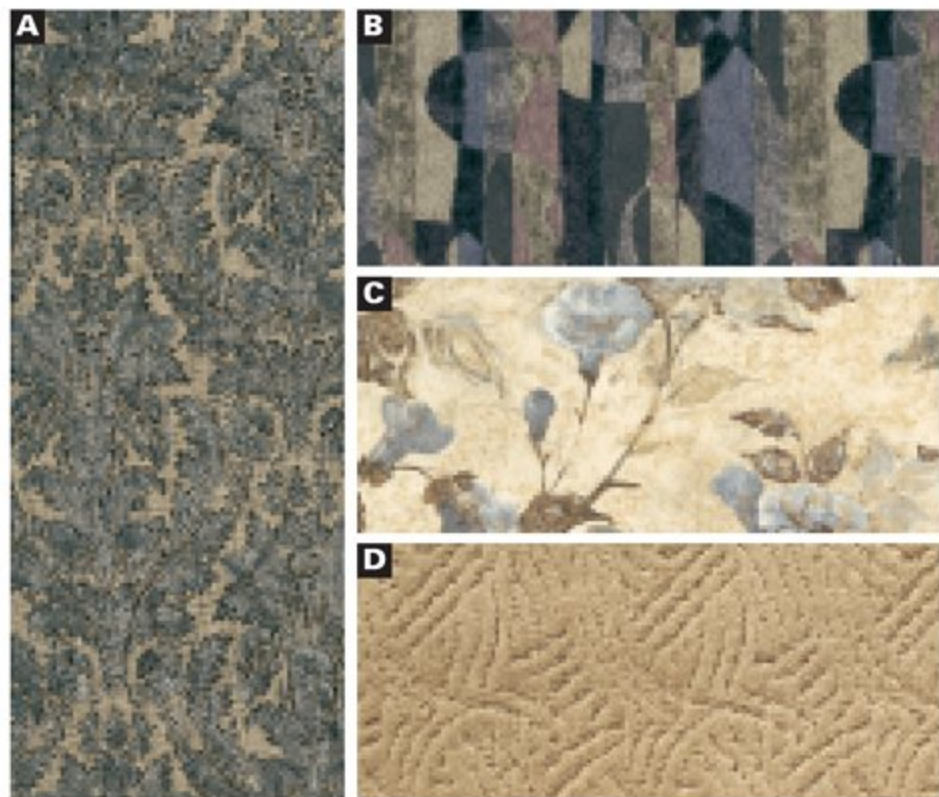


# EXTERIOR COLORS | FABRICS | WOODS



50TH ANNIVERSARY GOLDEN HERITAGE

**A** Sofa **B** Accent **C** Bedspread **D** Carpet



ASTORIA BLUE



TRANQUIL GARDEN



SUNSET MOSAIC



VANDERBILT TAN



VINTAGE OAK



LIGHT MAPLE



WALNUT



## THE FAMILY ADVANTAGE



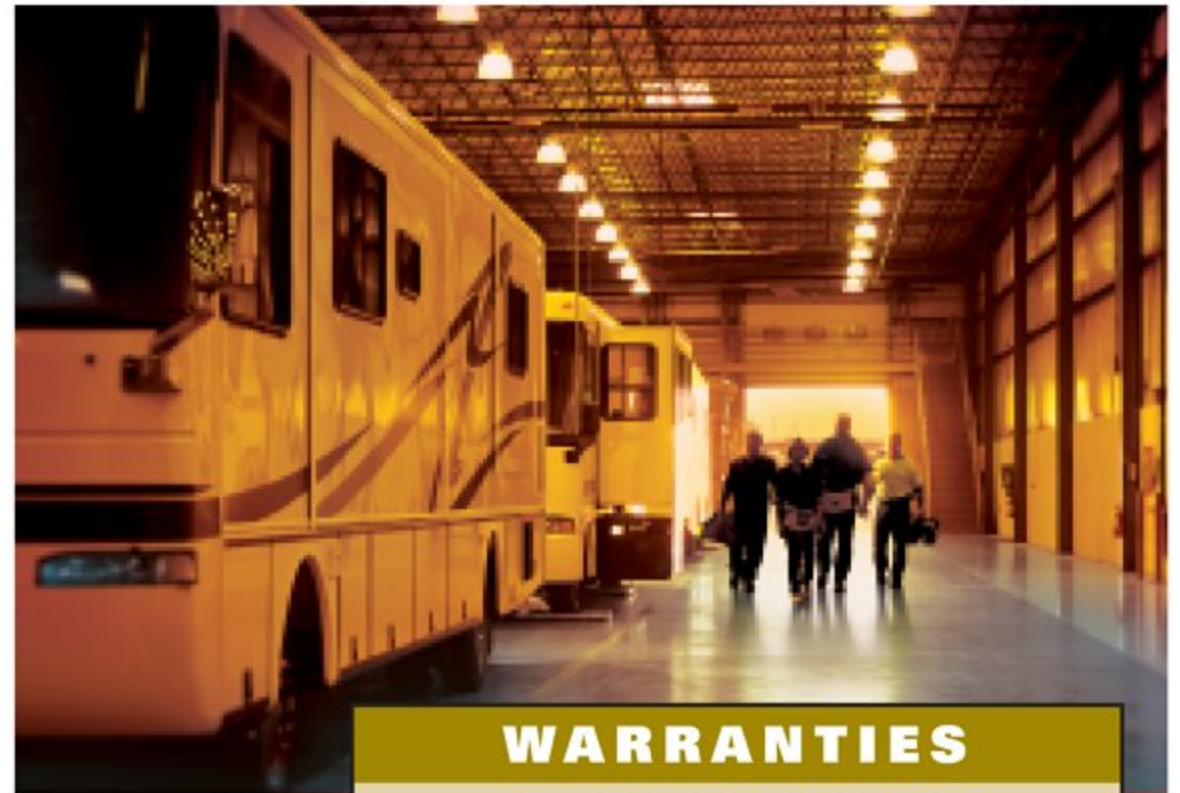
### WE ENCOURAGE YOU TO COMPARE THE HOLIDAY RAMBLER FAMILY ADVANTAGE.

When you purchase a travel trailer or fifth wheel from Holiday Rambler, you become part of an industry-leading family of companies called Monaco Coach Corporation. What does that mean for you? It means you have access to a wider array of benefits. To begin with, your recreational vehicle is built by a level of expertise that could only be achieved through the teamwork and combined experience of all our companies. You also get the benefit of our White Glove factory inspection program, for a higher level of quality assurance and added peace of mind. And your dealer will be happy to tell you about our other innovative programs, including our Extended Care service agreements. Of course, once you're on the road, you'll have access to our nationwide network of more than 350 service



### 350 SERVICE FACILITIES NATIONWIDE AND GROWING.

facilities, meaning wherever you travel, you're never far from a friend. Ready to roll? In a 2004 Holiday Rambler, the strength of our entire family is behind you every mile of the way.



### WARRANTIES

**12 MONTH/24,000 MILE**  
basic limited warranty

**5 YEAR/50,000 MILE**  
limited warranty on aluminum or steel frame  
structure of sidewall, roof, front and rear cap

See owner's manual for complete details.



**MONACO COACH CORPORATION**

Due to the large variety of options and floorplan arrangements available to our customers, actual weights for each unit can differ significantly. Holiday Rambler provides a weight sticker on each unit we produce which includes that unit's tank capacities and approximate weight. Consult your local Holiday Rambler dealer for unit availability and further information.

The information printed in this brochure reflects product design, fabrication, and component parts at the date of printing. The manufacturer reserves the right, at any time, to make changes in product design or material or component specifications as its sole option, without notice. This includes the substitution of components of a different brand or trade name, which will result in comparable performance. All information printed in this brochure is subject to change after the date of printing. Some features shown or mentioned in this brochure are optional and may only be available in selected floorplans. Photographs may show props or decorations that are not standard equipment on Holiday Rambler models. Holiday Rambler, the HR logo and its design, are registered trademarks. All other products and company names are trademarks and/or registered trademarks of their respective holders.

While the color of the towable's exterior and the interior fabrics depicted in this sales brochure are fair and reasonable depictions, the colors depicted may not be an exact match of the actual colors because of the variances in photo-processing and variances caused by inserting the photographs within the sales brochure. Due to product improvements, changes during the model year and/or transcription errors that may occur, information represented within this brochure may not be accurate at the time of your purchase. If certain information is significant to your purchasing decision, please confirm the information with your dealer prior to submitting your order.



# PRESIDENTIAL FIFTH WHEEL SPECIFICATIONS

Weights*	30SCD	32RKD	32RLT	32SKQ	33FKT	34RKT
Gross Vehicle Weight Rating (Lbs.)	14,400	12,100	14,400	14,400	14,400	14,400
GVWR with 7,000 Lb. Axle (Lbs.)	N/A	N/A	N/A	17,000	N/A	N/A
Hitch Weight (Lbs.)	—	1,900	—	—	—	—
Axle(s) Weight (Lbs.)	6,000	5,200	6,000	6,000	6,000	6,000
Unloaded Vehicle Weight (Lbs.)	—	9,500	—	—	—	—
Net Carrying Capacity (NCC) (Lbs.)	—	2,600	—	—	—	—
NCC with 7,000 Lb. Axles (Lbs.)	N/A	N/A	N/A	7,000	N/A	N/A
Tire Size	16"	16"	16"	16"	16"	16"
Tire Size and Load Range with 7,000 Lb. Axles	N/A	N/A	N/A	G HT	N/A	N/A
Tire Load Range	E HT	E	E HT	E HT	E HT	E HT

Measurements						
Overall Length	31' 6"	32' 2"	33' 0"	37' 32"	34' 0"	34' 0"
Overall Height (Including A/C)	12' 9"	12' 9"	12' 9"	12' 9"	12' 9"	12' 9"
Exterior Width	98"	98"	98"	98"	98"	98"

Tank Capacity**						
Water Heater (Gal.)**	10	10	10	10	10	10
Gray Tank (Gal.)**	40/40	40/40	40/40	40/40	40/40	40/40
Black Tank (Gal.)**	40	40	40	40	40	40
Fresh Tank (Gal.)**	70	70	70	70	70	70
LP Tank (Gal.)***	30(2)	30(2)	30(2)	30(2)	30(2)	30(2)

Weights*	34RLT	35SKT	36FKT	36RLT	36SKQ	36SKT
Gross Vehicle Weight Rating (Lbs.)	14,400	14,400	17,000	14,400	17,000	14,400
GVWR with 7,000 Lb. Axle (Lbs.)	17,000	17,000	0	17,000	0	17,000
Hitch Weight (Lbs.)	2,740	—	2,540	—	2,540	—
Axle(s) Weight (Lbs.)	6,000	—	6,000	—	6,000	6,000
Unloaded Vehicle Weight (Lbs.)	12,560	—	13,440	—	13,440	—
Net Carrying Capacity (NCC) (Lbs.)	1,840	—	3,560	—	3,560	—
NCC with 7,000 Lb. Axles (Lbs.)	7,000	7,000	N/A	7,000	N/A	7,000
Tire Size	16"	16"	16"	16"	16"	16"
Tire Size and Load Range with 7,000 Lb. Axles	G HT	G HT	G HT	G HT	G HT	G HT
Tire Load Range	E HT	E HT	E HT	E HT	E HT	E HT

Measurements						
Overall Length	36' 3"	36' 3"	37' 3"	35' 3"	37' 3"	37' 3"
Overall Height (Including A/C)	12' 9"	12' 9"	12' 9"	12' 9"	12' 9"	12' 9"
Exterior Width	98"	98"	98"	98"	98"	98"

Tank Capacity**						
Water Heater (Gal.)**	10	10	10	10	10	10
Gray Tank (Gal.)**	40/40	40/40	40/40	40/40	40/40	40/40
Black Tank (Gal.)**	40	40	40	40	40	40
Fresh Tank (Gal.)**	70	70	70	70	70	70
LP Tank (Gal.)***	30(2)	30(2)	30(2)	30(2)	30(2)	30(2)

\* Weights may vary by options.

\*\* All tank capacities are estimated based upon calculations provided by the tank manufacturers and represent approximate capacities. The actual "usable capacity" may be greater or less than the estimated capacities based upon fabrication and installation of the tanks.

\*\*\*Actual filled LP capacity is 80% of listing due to safety shut-off required on tank.



## BODY AND FRAME CONSTRUCTION

### Standard Features

- Alumaframe® Superstructure
- E-Coated Frame
- Vinyl Exterior Graphic Color
- Wrap Storage Doors
- Smooth Metal .040 Sidewall
- Front Molded Fiberglass Cap
- Rear Molded Fiberglass Cap with Integrated Bumper
- 3/8" Foam Core, Thermal Barrier Laminated Sidewall Structure
- 1-1/2" Steel Framed Sub-Floor
- Laminated Aluminum Framed Bath Deck Std. Units Only (N/A: 32SKQ, 35SKT, 36FKT, 36RLT)
- Laminated Structurwood™ Flooring
- Enclosed and Heated Underbelly
- Triple Entry Step
- Aluminum Roof Structure with Double I-Beam Roof Rafter 16" on Center
- RV 2000 Exterior
- Triple Vapor Barrier in Roof
- Flat Floor Slide-Out in Main Living Area
- Trunk Lid Frame Storage under Alcove
- Nev-R-Lube Axles with Electric Brakes, Shock Absorbers and Radial Tires
- Radial Tires 16"
- Chrome Rims
- Front Power Landing Jacks
- Spare Tire with Sport Wheel with Carrier under Frame, Recessed into Underbelly
- Stabilizer Jacks
- Rear Ladder
- Easy Access Snap Pins for Landing Jacks
- Split Storage Door under Alcove

### Options

- Gel Coat Fiberglass Sidewalls and under Alcove
- Aluminum Rims (4)
- Quick Draw Electrical Rear Leveling ILO Standard Stabilizer Jacks
- Remote Landing Gear
- Trail Air Suspension

- Slide-Out Storage Tray under Bath Deck
- Rear Mounted Bike Rack with 3 Bike Capacity
- 7,000 Lb. Nev-R-Lube Axles (Where Applicable)

## APPLIANCES

### Standard Features

- 8 cu. ft. 2-Way Refrigerator
- 21" High-Output 3-Burner Range/Oven
- Bi-Fold Range Cover with Solid Surface Cover
- Drawer under Stove (N/A: 30SCD)
- TV Swivel Base, Living Area TV Optional
- Spacesaver Microwave
- Washer/Dryer Prep (N/A: 30SCD)

### Options

- 8 cu. ft. 2-Way Refrigerator with Ice Maker (30SCD, 32RKD, 32RLT, 34RLT, 36RLT, 36SKT)
- 12 cu. ft. 2-Way Four-Door Refrigerator with Ice Maker (N/A with Roll-Out Pantry Opt.) (32RLT, 34RLT, 36RLT, 36SKT)
- 12 cu. ft. 2-Way Four-Door Refrigerator without Ice Maker (N/A with Roll-Out Pantry Opt.) (N/A: 30SCD, 32RKD, 32SKQ)
- Three-Burner Cooktop IPO Oven
- Convection Spacesaver Microwave
- Exterior Radio with CD Player
- Camping Convenience Group - Four 2-Way Radios, Rechargeable Flashlight, Cord Reel, Pop-Up Trash Can
- 27" Color TV with Remote Control in Living Area (N/A: 30SCD, 32RKD, 32SKQ)
- 20" Color TV with Remote Control in Living Area (30SCD, 32RKD)
- 20" Color TV with Remote Control in Bedroom
- DSS Dish with Stand
- Vented Washer/Dryer, Combo (N/A: 32SKQ, 33FKT)
- Vented Washer/Dryer, Stacked (N/A: 32SKQ)
- VCR

- Outside Gas Cooking Grill with Quick Disconnect (30SCD, 32RKD, 36RLT)
- Built-In Central Vacuum, Deluxe Tools, 3 Package Replacement Bags
- Built-In Safe
- Stainless Steel Appliance Package

## INTERIORS

### Standard Features

- Vintage Oak Cabinetry
- Raised 6-Panel Passage Doors
- Square Raised Panel Cabinet Doors
- Chrome and Brass Finished Cabinet Hardware
- Low Friction Roller Drawer Guides
- Raised Panel Insert for Refrigerator
- Hardwood Top on Chest of Drawers
- Solid Surface Kitchen Countertop with Composite Sink, Built-In Knife Holder and Recessed Range
- Solid Surface Color Matched Kitchen Sink Covers
- Solid Surface Bathroom Countertops
- Built-In Kitchen Trash Can
- Toe Kicks at Base of Cabinets
- Roll-Out Pantry with Cabinet next to Refrigerator with 3 Baskets (N/A: 30SCD, 32SKQ)
- Pantry/Closet at Entry Door with Adjustable Shelves (N/A: 30SCD, 32RKD, 32RLT, 33FKT, 34RLT, 36SKT)
- Workstation with Keyboard Drawer and Chair (N/A: 30SCD, 32RKD, 32RLT, 33FKT, 34RLT)
- Decorative Wall Clock
- Six Panel Hollow Core Door
- Overhead Cabinets in Main Floor Slide-Out above Sofa
- Cedar Lined Bedroom Wardrobe
- Redesigned Bedroom TV Cabinet with Added Door
- Smoked Glass in Entertainment Center Door
- Mini Struts in Overhead Cabinet Doors
- Wainscoting and Chair Rail in Living Room Area (N/A: 33FKT, 34RKT, 35SKT, 36FKT, 36RLT)
- Dressing Mirror

- Side Bar Top Extension (32SKQ, 36FKT, 36SKQ)
- Kitchen Countertop Extension (32SKQ, 36FKT, 36SKQ)
- Tip Out Tray by Sink
- Padded Vinyl Ceiling
- Towel Bars on Bathroom Door
- Carpeting and Pad in Living Area, Hallway and Bedroom
- Linoleum in Bathroom
- Knife Holder
- Silverware Tray
- Hardwood Slide-Out House Fascia Trim and Accents
- Hardwood Wardrobe Header
- Hardwood Door Header in Bathroom
- Decor Mirror
- Interlocking Laminate Flooring in Galley and Entry
- Utility Center by Entrance Door

### Options

- Decors: Sunset Mosaic, Vanderbilt Tan, Astoria Blue, Tranquil Garden
- 50th Anniversary Golden Heritage Package - Upgraded Fabrics, Embroidered Throw in Living Room, Two Additional Pillows in Lounge Area and One Additional Pillow in Bedroom
- Wood Choice: Light Maple, Walnut
- Kitchen Countertop Extension (36SKT)
- Wilsonart® Plank Flooring in Kitchen/Entry
- Area Throw Rug
- Fireplace with Home Entertainment System (N/A: 30SCD, 32RKD, 32RLT, 32SKQ)

## FURNITURE

### Standard Features

- Bedroom Slide-Out with Chest of Drawers and Large Window
- Freestanding Dinette Table with Four Wood Chairs
- Bedspread
- Hardwood Residential Style Headboard
- Easy Bed Sleeper Sofa with Two Bolsters



# PRESIDENTIAL FIFTH WHEEL STANDARDS AND OPTIONS

- Swivel Barrel Chair
- Desk Chair (32SKQ, 34RLT, 36FKT, 36RLT, 36SKQ, 36SKT)
- Bar Stools with Spindle Legs (32SKQ, 34RLT, 36FKT, 36SKQ)

## Options

- King Bed with Corner Shelves inside Bedroom Slide-Out
- Ultraleather™ Hide-A-Bed Sofa
- Hide-A-Bed Sleeper Sofa with Footrests
- Fabric Recliner
- Ultraleather™ Mate Recliner
- Coffee Table
- Booth Dinette with Drawer and Arched Back Cushions

## ELECTRICAL SYSTEMS AND LIGHTS

### Standard Features

- Linear Series Digital AM/FM with CD Player 12V Stereo with 6 Upgrade Speakers, 40 Watt Amp
- Electrical Management System
- Porch Light
- Fluorescent Ceiling Lights
- 120V Exterior Recept
- 12V Recept in Kitchen Location
- Utility Service Light
- Entry Step Light
- Wardrobe Lights
- Hitch Light
- Trunk Light
- Wider Wall Switches
- Center Blinking Light
- Decorative Dinette Light with Wall Switch
- Brass Swivel Lights in Bedroom Slide-Out Overheads and above Living Room Chairs
- Cosmetic Light in Bathroom
- Battery Disconnect Switch
- Battery Box
- Telephone Jacks in Kitchen Table, Bedroom and Computer Area

- Wineguard® TV Antenna with Cable Box
- Cable TV/DSS/VCR Ready with Video Control Box
- Dual Exterior Cable/Satellite Recept
- 12V Incandescent Ceiling Lights with Clear Lens
- Decorative Wall Light with Swing Arm in Living Area

## Options

- Home Style Stereo with Surround Sound and DVD Player (N/A: 30SCD)
- Exterior AM/FM Radio with CD Player
- Two Exterior Security Lights with Individual Switches in the Utility Center
- 1 - 12V Deep Cycle Battery
- 2 - 12V Deep Cycle Batteries
- Generator Prep
- 5.5 kW Marquis Gold LP Onan® Generator
- Solar Prep

## PLUMBING AND LP SYSTEMS

### Standard Features

- White Composite Kitchen Sink
- Chrome Single Lever Kitchen Faucet with Pull-Out Sprayer
- Demand Water System with Water Pump
- Bathroom Sink with Brass Single Handle Faucet
- Fiberglass One-Piece Shower with Glass Door
- Water Heater By-Pass Kit
- No-Fuss Flush Holding Tank Rinsing System
- 10-Gallon LP Gas/Electric Water Heater with Electronic Ignition (DSI)
- Water Management System with Drain, including Outside Shower
- Brass Shower Hose and Head
- Two 30 Lb. LP Tanks with Automatic Changeover and Cover
- Pump Valve for Water Fill
- Water Heater Switch

## Options

- Fiberglass One-Piece Shower/Tub with Glass Door (N/A: 33FKT)
- Water Filter System in Kitchen

## HEATING, VENTS AND AIR CONDITIONING

### Standard Features

- 35M BTU Hydroflame Electronic Ignition Furnace (30SCD, 32RKD, 32RLT, 32SKQ)
- 40M BTU Hydroflame Electronic Ignition Furnace (N/A: 30SCD, 32RKD, 32RLT, 32SKQ)
- One 13.5M BTU Air Conditioner, High Output with Remote
- In-Floor Ducted Heating System
- Ceiling Fan
- Wire Prep and Ducting for Second Air Conditioner with Optional Washer/Dryer Prep and 50 Amp Service
- Manual Roof Vent in Bedroom
- Attic Fan with Thermo and Rain Sensor with 2-Way Switch in Living Room
- Wood Louvered Door ILO Metal Furnace Air Return Grill
- 12V Roof Vent in Bathroom

## Options

- 15.0M BTU Air Conditioner ILO 13.5M with Remote
- Second 13.5M BTU Air Conditioner, High Capacity with Remote ILO Vent
- One Heat Pump 15.0M BTU Air Conditioner High Capacity ILO 13.5M with Remote
- Second Heat Pump 15.0M BTU Ducted Air Conditioner with High Capacity and Remote
- 12V Roof Vents
- Attic Fan with Thermo and Rain Sensor with 2-Way Switch in Bedroom

## WINDOWS, DOORS AND AWNINGS

### Standard Features

- Tinted Radius Windows
- Window in Stool Room
- Tinted Skylight in Bathroom
- 30" Radius Main Entrance Door with Anti-Skid Steps

## Options

- Slide-Out Awning on All Slides
- Patio Awning, Texturized Polyester Fabric with Alumaguard Cover
- Patio Awning with Alumaguard Cover
- Bedroom Slide-Out Awning
- Swing Out Entry Door Handle
- Bay Window at Dinette (N/A in Dual Pane)
- Dual Pane Windows with Dark Tint

## WINDOW TREATMENTS

### Standard Features

- Living Room: Mini Blinds, Padded Valances and Lambrequins
- Kitchen: Mini Blinds and Valance
- Bedroom: Mini Blinds, Padded Valances and Lambrequins

## Options

- Pleated Day/Black-Out Shades Color Coordinated in Living Area and Bedroom

## SAFETY FEATURES

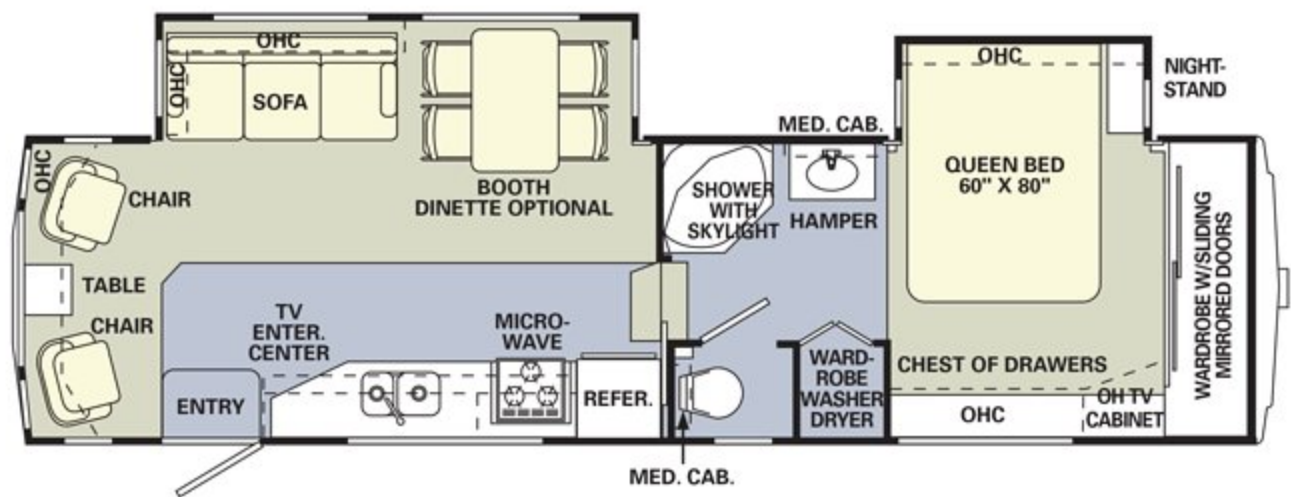
### Standard Features

- Fire Extinguisher
- Deadbolt Lock(s) on Entrance Door(s)
- 120V GFI Protected Outlets (Kitchen, Bath, Exterior)
- Breakaway Switch
- LP Gas Detector
- Smoke Detector
- Egress Window(s)
- Safety Glass

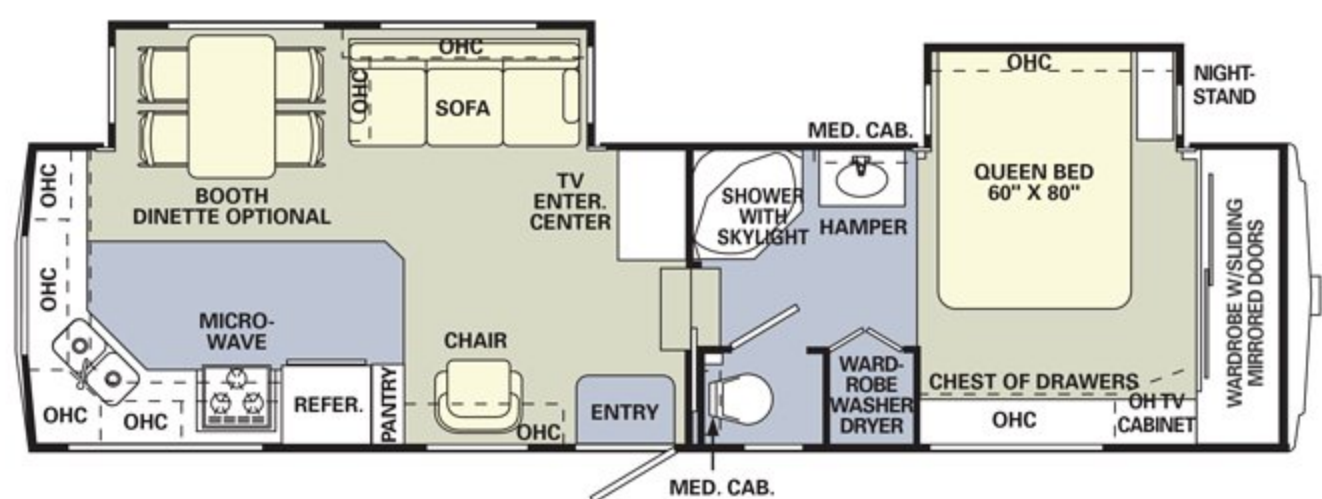


PRESIDENTIAL FIFTH WHEEL FLOORPLANS

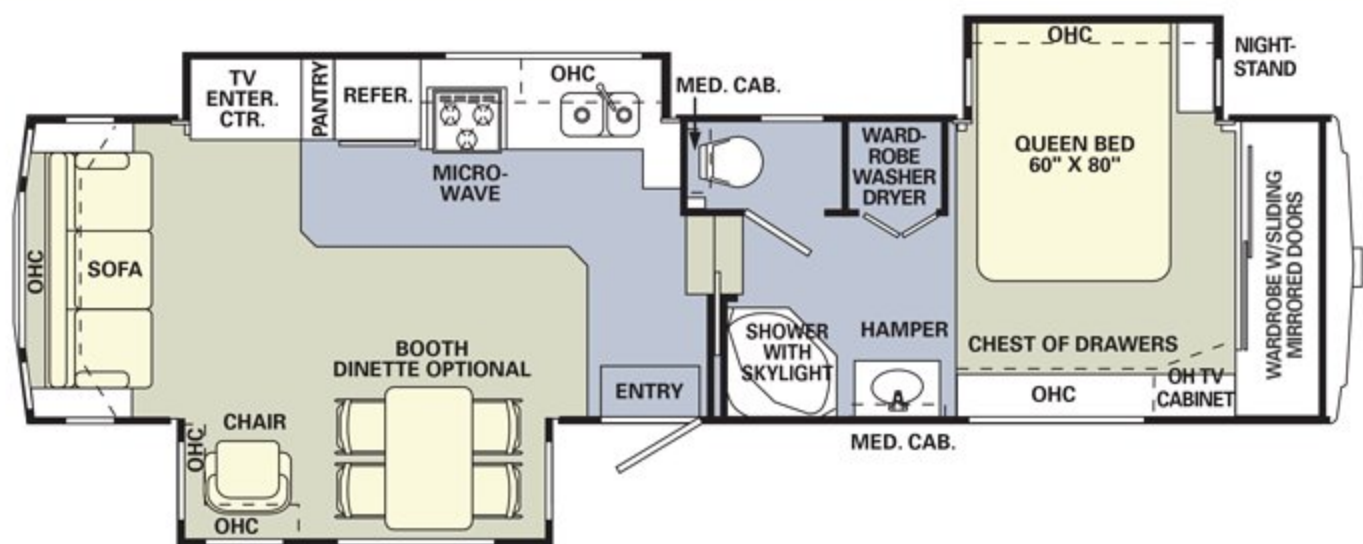
30SCD



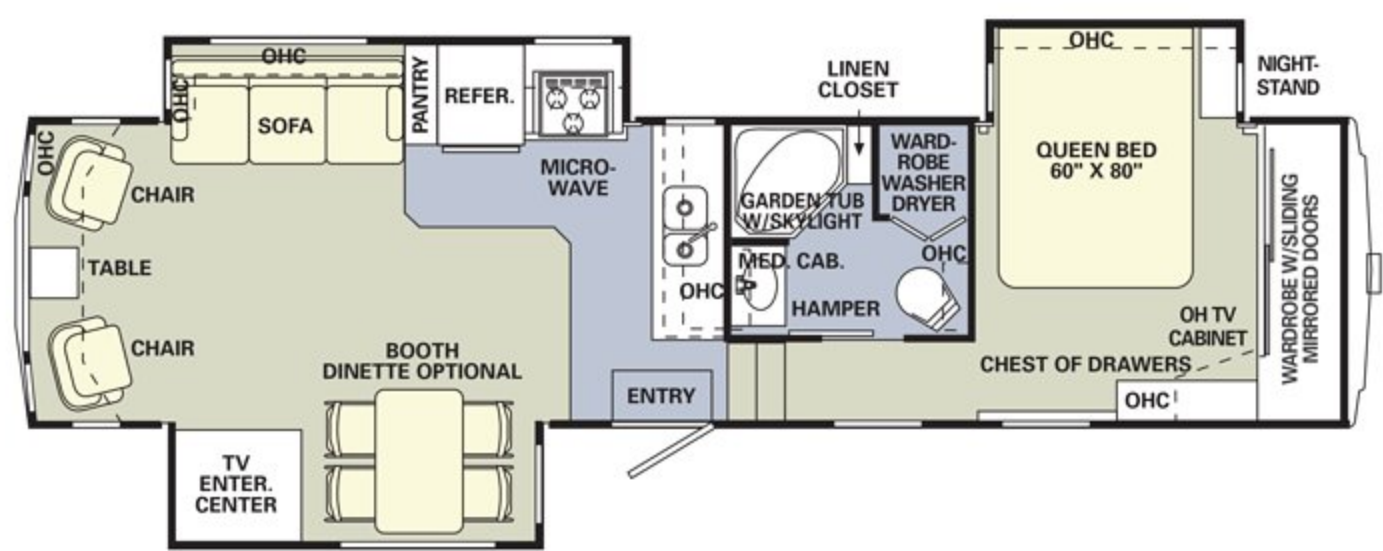
32RKD



32RLT



33FKT



OPTIONAL ITEMS:

CARPET

LINOLEUM



Booth Dinette with  
Drawer and Arched  
Back Cushions



Coffee Table



Fabric Recliner

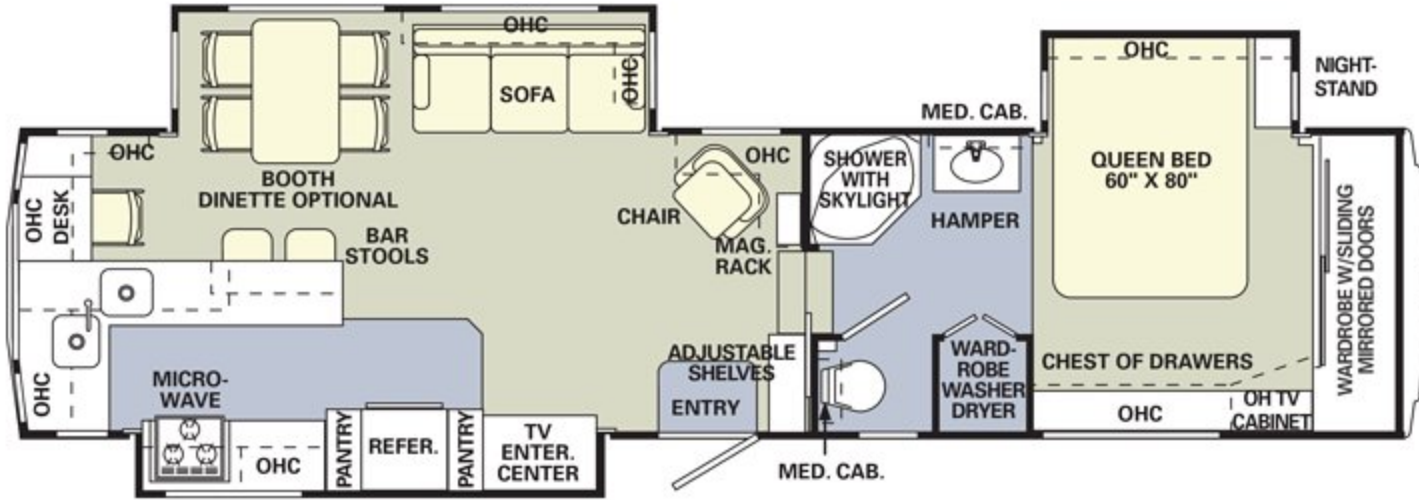


Fireplace with Home  
Entertainment System

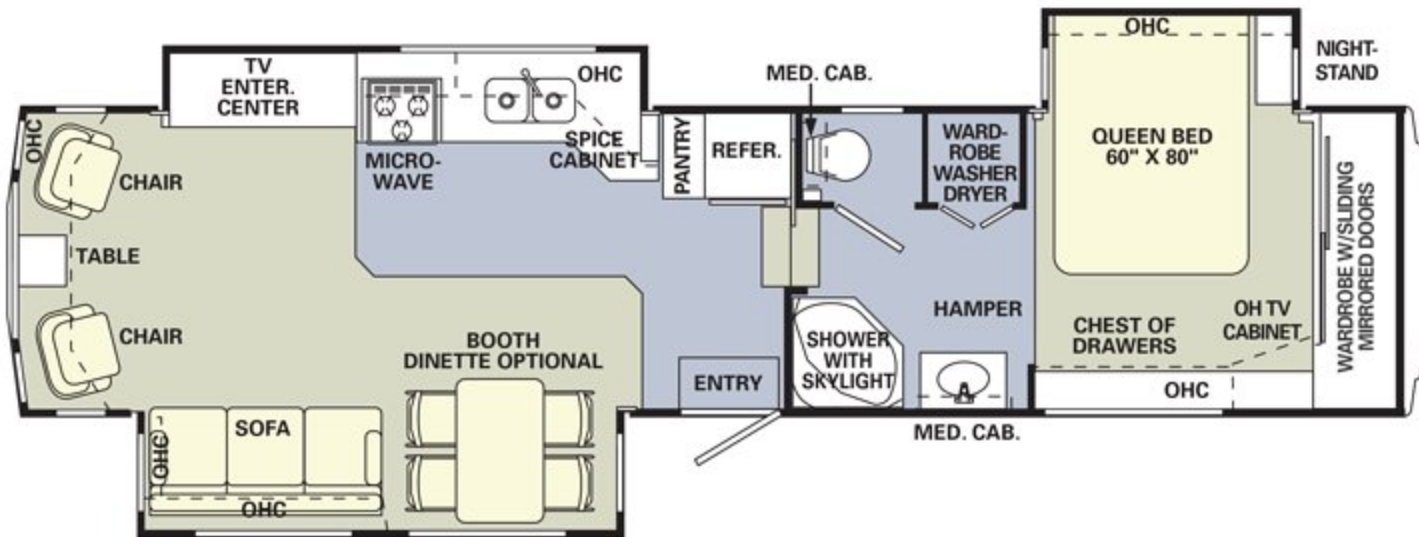


# PRESIDENTIAL FIFTH WHEEL FLOORPLANS

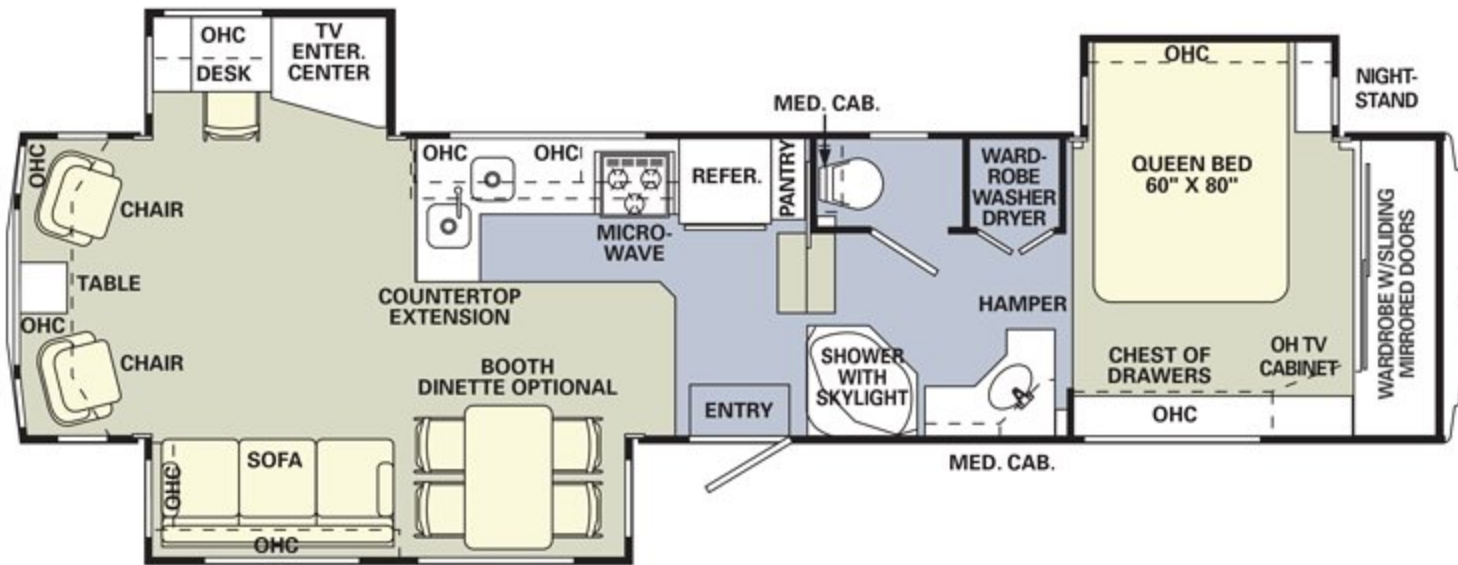
34 RKT



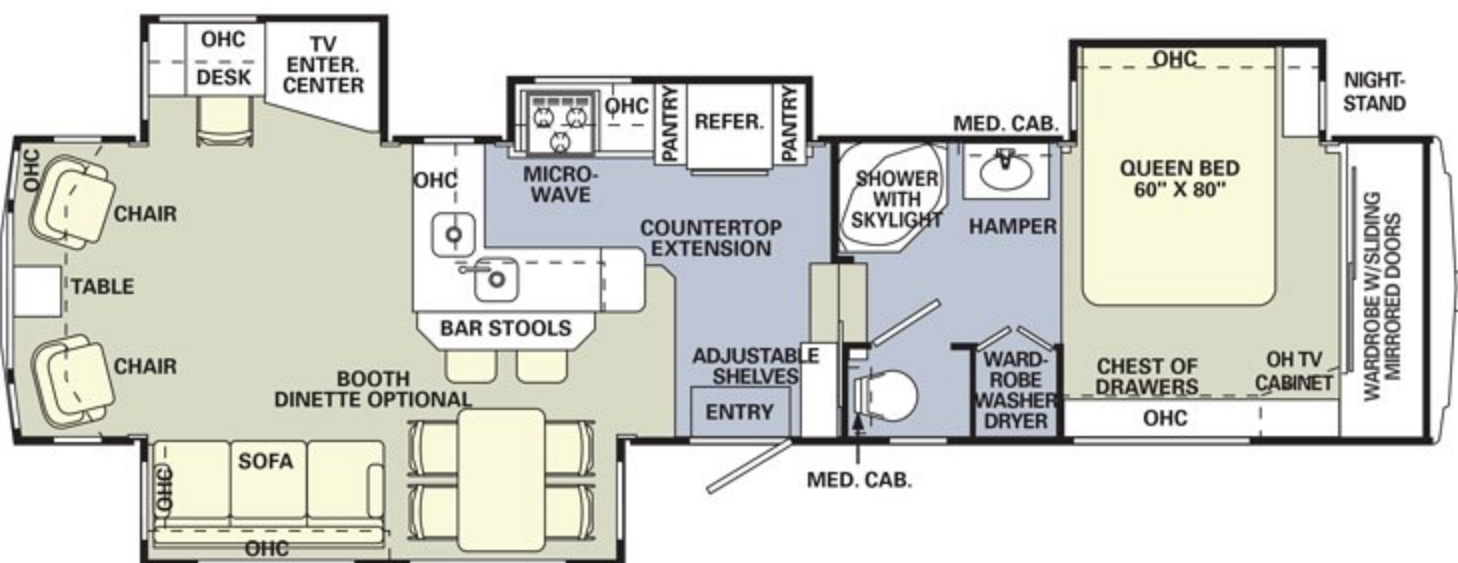
34 RLT



36 SKT



36 SKQ



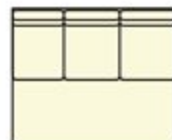
Hide-A-Bed Sleeper  
Sofa with Footrests



King Bed



Ultraleather™ Mate  
Recliner



Ultraleather™  
Hide-A-Bed Sofa



Shower/Tub



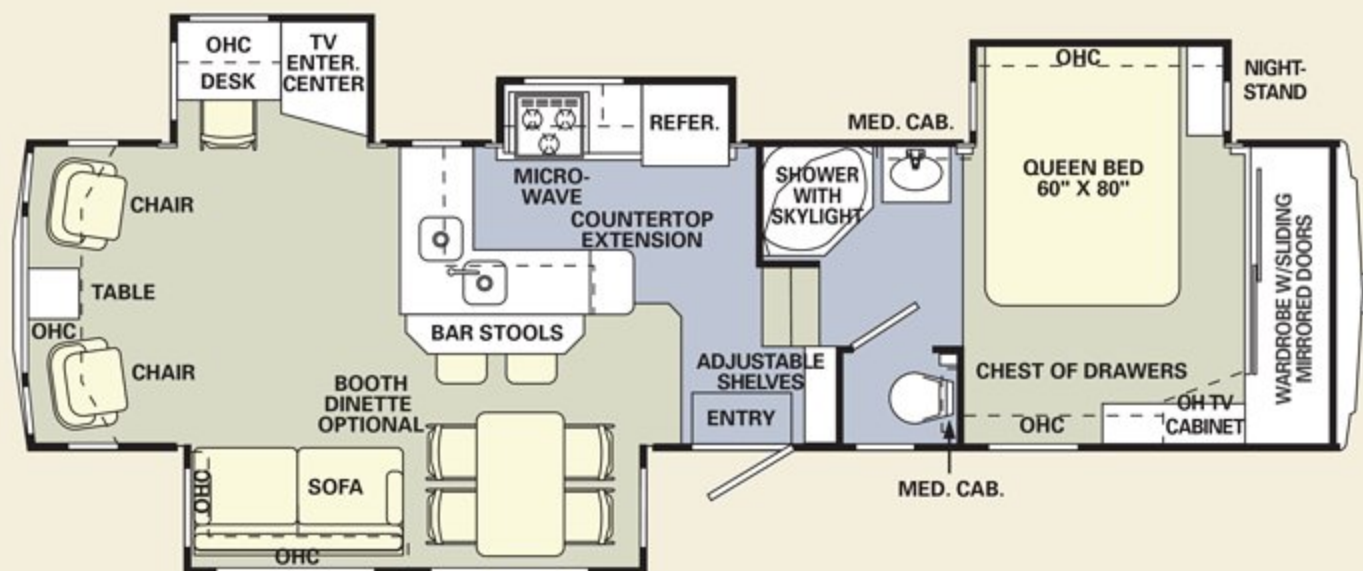
# PRESIDENTIAL FIFTH WHEEL FLOORPLANS

## STEP THIS WAY.

Experience the ease of walking into your bedroom or bathroom without an additional step up. It's all thanks to our flat floors, a new feature for 2004.



## 32SKQ FLAT FLOOR



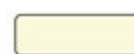
### OPTIONAL ITEMS:

CARPET

LINOLEUM



Booth Dinette with  
Drawer and Arched  
Back Cushions



Coffee Table



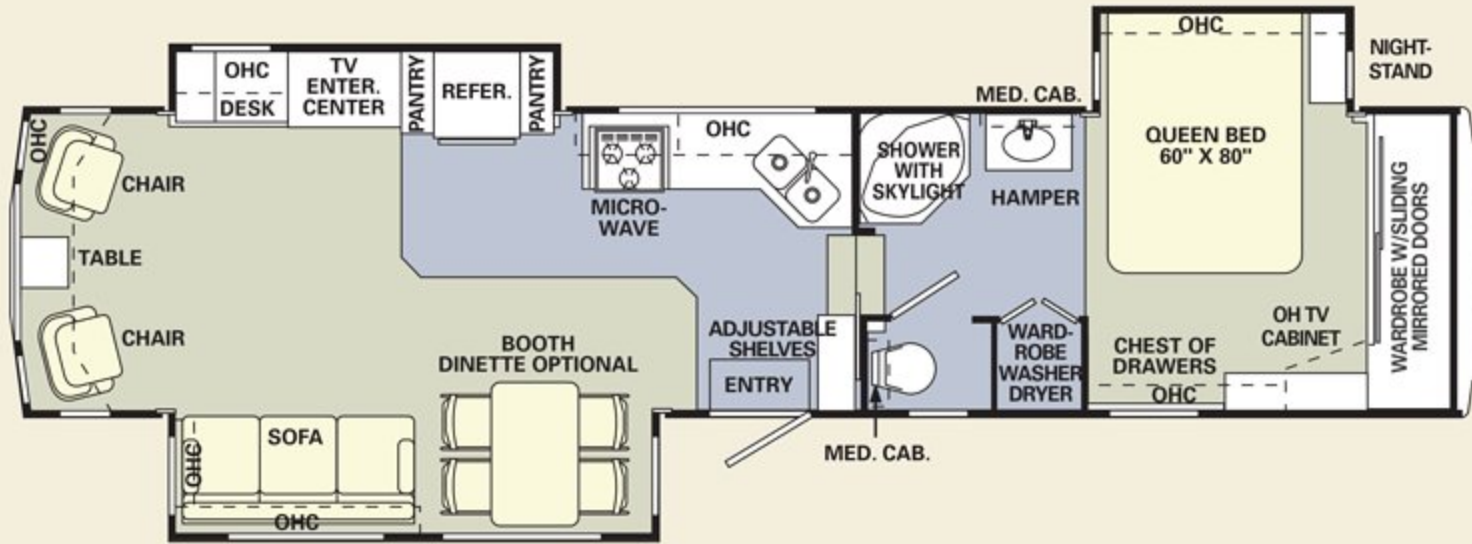
Fabric Recliner



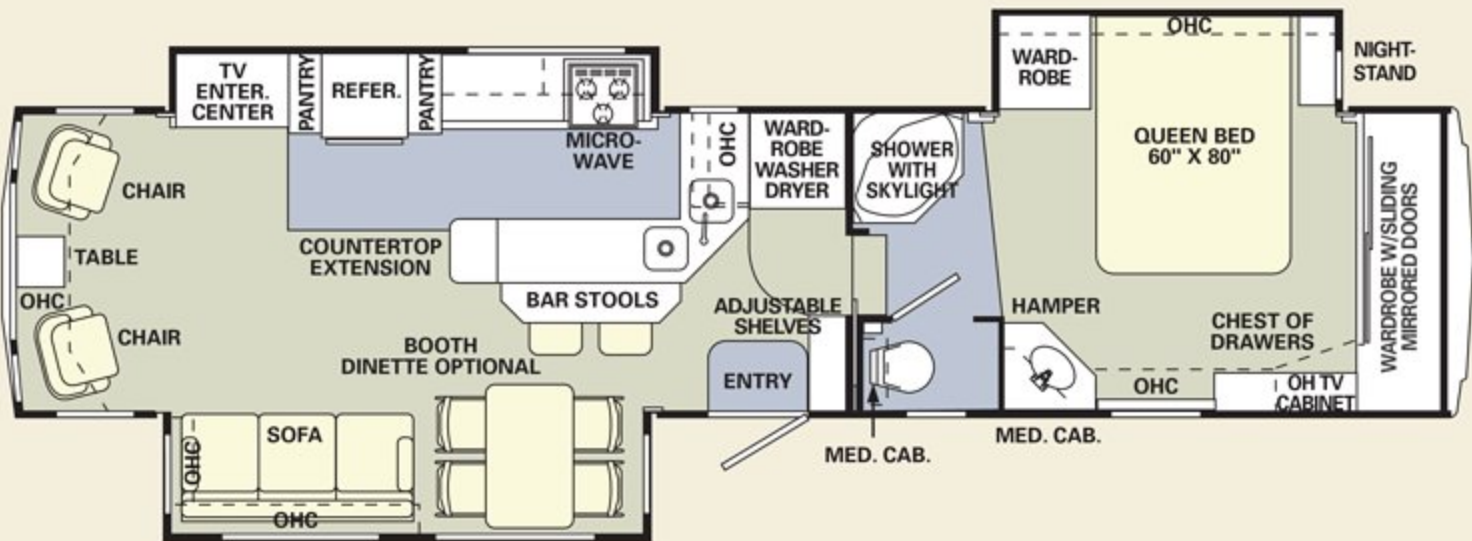
Fireplace with Home  
Entertainment System



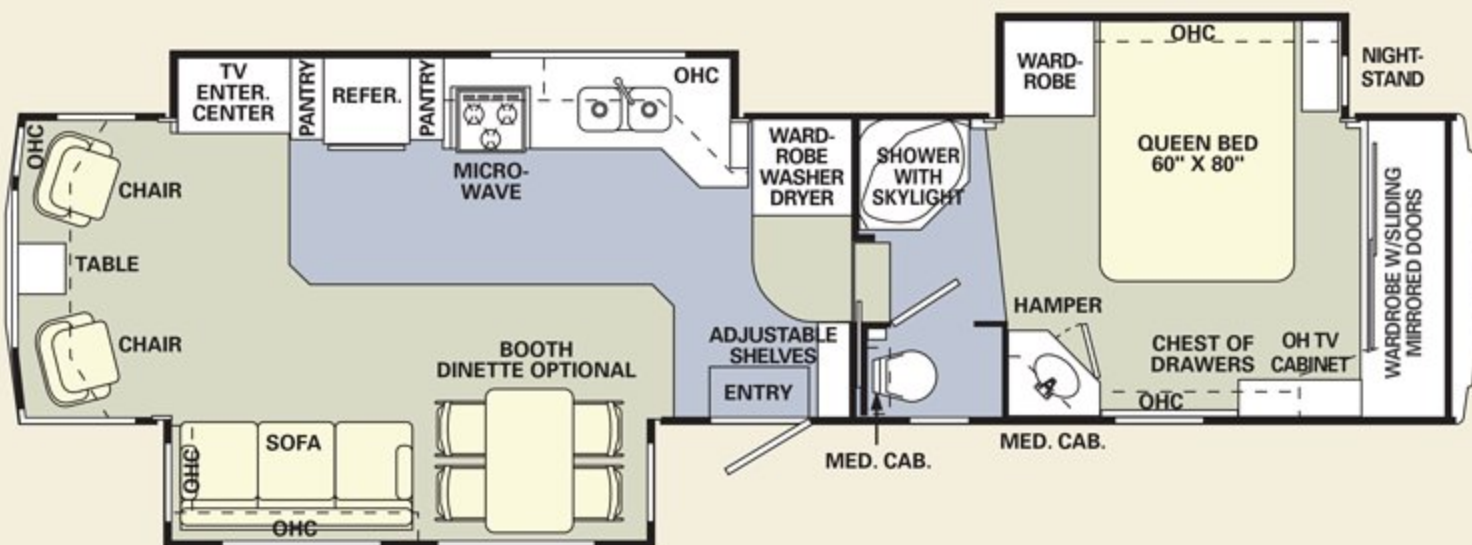
# PRESIDENTIAL FIFTH WHEEL FLOORPLANS



**35 SKT**  
FLAT FLOOR



**36 FKT**  
FLAT FLOOR



**36 RLT**  
FLAT FLOOR



Hide-A-Bed Sleeper  
Sofa with Footrests



King Bed



Ultraleather™ Mate  
Recliner



Ultraleather™  
Hide-A-Bed Sofa



Shower/Tub



*W*E'VE REDEFINED THE CONCEPT OF A TRAVEL TRAILER.



WE'RE PUTTING LUXURY AND TRAVEL TRAILER IN THE SAME SENTENCE? YES — AND SO WILL YOU, ONCE YOU'VE SEEN THE STUNNING NEW 2004 PRESIDENTIAL TRAVEL TRAILER. IT GREET'S YOU WITH MORE STYLISH COMFORT THAN EVER BEFORE — AND PAMPERS YOU WITH EVERY THOUGHTFUL DETAIL. FEATURING SUCH IMPRESSIVE OPTIONS AS A COMBINATION WASHER/DRYER, BUILT-IN VACUUM SYSTEM AND A HOME STEREO SYSTEM WITH SURROUND SOUND AND DVD PLAYER. FROM NOW ON, *THIS* IS THE WAY TO GO.



34SKD in Sunset Mosaic with Vintage Oak cabinetry.



#### EVERY DETAIL CREATES AN EXQUISITE EXPERIENCE.

As part of our celebration, the Presidential Travel Trailer is available in a 50th Anniversary Golden Heritage Package. This special edition includes many extra interior touches, including upgraded fabrics, a unique kitchen countertop design and an embroidered throw in the living room.



#### BETTER STAIN PROTECTION

Manufactured in, not added on. 3M Scotchgard™ Carpet Stain Release is applied during the carpet manufacturing process for a higher level of protection. Dupont Teflon® soil repellent is applied to virtually all upholstery fabric during the finishing process for superior coverage.°

°Brand and application of carpet or upholstery fabric protection may vary depending on date recreational vehicle was manufactured.



# PRESIDENTIAL TRAVEL TRAILER SPECIFICATIONS

Weights*	29SKS	30FKS	32FKD	33FKS	34SKD
Gross Vehicle Weight Rating (Lbs.)	11,000	11,000	11,000	11,000	11,000
Hitch Weight (Lbs.)	N/A	1,170	1,108	N/A	N/A
Axle(s) Weight (Lbs.)	5,200	5,200	5,200	5,200	5,200
Unloaded Vehicle Weight (Lbs.)	N/A	7,600	8,590	N/A	N/A
Net Carrying Capacity (NCC) (Lbs.)	N/A	3,400	2,410	N/A	N/A
Tire Size	15"	15"	16"	15"	16"
Tire Load Range	D	D	D	D	D

Measurements					
Overall Length	29' 2"	30' 10"	33' 10"	33' 10"	35' 7"
Overall Height (Including A/C)	10' 9"	10' 9"	10' 9"	10' 9"	10' 9"
Exterior Width	98"	98"	98"	98"	98"

Tank Capacity**					
Water Heater (Gal.) **	10	10	10	10	10
Gray Tank (Gal.) **	40	40/40	40/40	40/40	40/40
Black Tank (Gal.) **	40	40	40	40	40
Fresh Tank (Gal.) **	50	50	50	50	50
LP Tank (Gal.) ***	30 (2)	30 (2)	30 (2)	30 (2)	30 (2)

\* Weights may vary by options.

\*\* All tank capacities are estimated based upon calculations provided by the tank manufacturers and represent approximate capacities. The actual "usable capacity" may be greater or less than the estimated capacities based upon fabrication and installation of the tanks.

\*\*\*Actual filled LP capacity is 80% of listing due to safety shut-off required on tank.

## PRESIDENTIAL TRAVEL TRAILER STANDARDS AND OPTIONS

### BODY AND FRAME CONSTRUCTION

#### Standard Features

- Alumaframe® Superstructure
- Frame
- New Vinyl Exterior Graphics
- Power Front Jacks
- Wrap Storage Doors - Two 32" Doors
- Smooth Aluminum Exterior Walls
- Front Molded Fiberglass Cap
- Molded Fiberglass LP Bottle Cover
- Molded Fiberglass Battery Box Cover
- Rear Molded Fiberglass Cap with Integrated Bumper
- 3/8" Foam Core, Thermal Barrier Laminated Sidewall Structure
- 1-1/2" Steel Framed Sub-Floor
- Laminated Structurwood™ Flooring
- Enclosed and Heated Underbelly
- Aluminum Roof Structure with Double I-Beam Roof Rafter 16" on Center - RV 2000 Exterior
- Triple Vapor Barrier in Roof
- Flat Floor Slide-Out - Main Living Area
- 2-5/16" Ball Coupler

- Storage under Rear Bed (N/A with Twin Bed Option) (N/A: 34SKD)
- Outside Storage in Wardrobe Area (34SKD)
- 5,200 Lb. Nev-R-Lube Axles with Electric Brakes and Shock Absorbers (N/A: 32FKD)
- 6000 Lb. Nev-R-Lube Axles with Electric Brakes and Shock Absorbers (32FKD, 34SKD)
- Radial Tires
- Stylized 16" Sport Wheels with Trim Ring and Chrome Center Hub (32FKD, 34SKD)
- Stylized 15" Sport Wheels with Trim Ring and Chrome Center Hub (29SKS, 30FKS, 33FKS)
- Spare Tire with Sport Wheel with Carrier under Frame Recessed into Underbelly
- Interior Height Increased to 84"
- Main Slide-Out Room Height 73"

#### Options

- Chrome Rims - 4 Wheels
- Aluminum Rims (4)

- Stabilizer Jacks
- Gel Coat Fiberglass Sidewalls
- Trail Air Suspension
- Rear Ladder

### APPLIANCES

#### Standard Features

- 8 cu. ft. 2-Way Refrigerator
- 21" High-Output 3-Burner Range/Oven
- Bi-Fold Range Cover
- Systems Monitor Panel on Range Hood with 12V Fan
- Microwave with Touch Control

#### Options

- 8 cu. ft. 2-Way Refrigerator with Ice Maker
- Exterior Radio with CD Player
- Camping Convenience Group (Four 2-Way Radios, Rechargeable Flashlight, Cord Reel and Pop-Up Trash Can)
- 27" Color TV with Remote Control in Living Area (32FKD, 33FKS)

- 20" Color TV with Remote Control in Living Area (Requires TV Swivel Base except 28SKS, 34SKD) (N/A: 32FKD, 33FKS)
- 20" Color TV with Remote Control in Bedroom (32FKD, 34SKD)
- 13" Color TV with Remote Control in Bedroom (29SKS, 30FKS, 33FKS)
- 20" TV Swivel Base (N/A: 33FKS)
- 27" TV Swivel Base (33FKS)
- DSS Dish with Stand
- Washer/Dryer Prep (33FKS, 34SKD)
- VCR
- Vented Washer/Dryer, Combo (33FKS, 34SKD)
- Vented Washer/Dryer, Stacked (33FKS, 34SKD)
- Outside Gas Cooking Grill with Quick Disconnect
- Built-In Vacuum, with Deluxe Tools and 3 Package Replacement Filter Bags
- Built-In Safe
- Stainless Steel Appliance Package



## INTERIORS

### Standard Features

- Vintage Oak Cabinetry
- Square Raised Panel Cabinet Doors
- Low Friction Roller Drawer Guides
- Raised Panel Insert for the Refrigerator
- Solid Surface Kitchen Countertop with Composite Sink with Built-In Knife Holder
- Solid Surface Kitchen Countertop with Color Matched Solid Surface Sink Covers
- Solid Surface Bathroom Countertop
- Built-In Kitchen Trash Can
- Toe Kicks at Base of Cabinets
- Roll-Out Pantry with Cabinet with 3 Baskets (N/A: 29SKS, 30FKS)
- Decorative Clock
- Tip Out Tray by Sink
- Cedar Lined Bedroom Wardrobe(s)
- Corner Shelves inside Bedroom Slide-Outs (N/A: 29SKS, 30FKS, 33FKS)
- TV Shelf in Bedroom
- Dressing Mirror
- Toilet Tissue Holders
- Towel Racks on Bathroom Door
- Smoked Glass in Entertainment Center Doors Only
- Carpeting and Pad in Living Area, Hallway and Bedroom
- Overhead Cabinets in Main Floor Slide-Out above Sofa
- Padded Vinyl Ceiling
- Hardwood Slide-Out House Fascia Trim and Accents
- Armstrong Interlocking Laminate Flooring in Galley and Entry
- Hardwood Door Header in Bathroom
- Linoleum in Bathroom
- Hamper (33FKS, 34SKD)
- White Doors on Washer/Dryer Cabinet (33FKS, 34SKD)
- Decor Mirror (30FKS, 33FKS, 34SKD)
- Knife Holder
- Silverware Tray
- Mini Struts in Overhead Cabinet Doors
- Raised Panel Passage Doors

### Options

- Decors: Sunset Mosaic, Vanderbilt Tan, Astoria Blue, Tranquil Garden
- 50th Anniversary Golden Heritage Package - Upgraded Fabrics, Embroidered Throw in Living Room, Two Additional Pillows in Lounge Area and One Additional Pillow in Bedroom
- Kitchen Countertop Extension (29SKS, 34SKD)
- Wood Choice: Light Maple, Walnut
- Area Throw Rug

- Wilsonart® Plank Flooring in Kitchen/Entry

## FURNITURE

### Standard Features

- Queen Bed
- Queen Bed with Bedroom Slide-Out (32FKD, 34SKD)
- Wood Booth Dinette with Drawer and Arched Back Cushions
- Bedspread
- Headboard
- Easy Bed Sleeper Sofa with Two Bolsters
- Swivel Barrel Chair (2 in 34SKD)

### Options

- Hide-A-Bed Sofa (N/A: 30FKS)
- Ultraleather™ Hide-A-Bed Sofa (N/A: 29SKS, 30FKS)
- Hide-A-Bed Sleeper Sofa with Footrests (N/A: 29SKS, 30FKS)
- Fabric Recliner (2 in 34SKD)
- Ultraleather™ Mate Recliner (2 in 34SKD)
- Coffee Table
- Freestanding Dinette Table with Four Wood Chairs
- Twin Beds (N/A: 34SKD)

## ELECTRICAL SYSTEMS AND LIGHTS

### Standard Features

- Linear Series Digital AM/FM with CD Player 12V Stereo with 6 Upgrade Speakers, 40 Watt Amp
- Electrical Management System - 30A 12V with 60 Amp Converter
- Porch Light
- 120V Exterior Receptacle
- Utility Service Light
- Entry Step Light
- Wardrobe Lights
- Hitch Light
- Trunk Light
- Center Blinking Light
- Fluorescent Ceiling Lights
- Decorative Dinette Light with Wall Switch
- Cosmetic Light in Bathroom
- Battery Disconnect Switch and Box
- 12V Incandescent Ceiling Lights with Clear Lens
- Decorative Wall Light with Swing Arm in Living Area
- Wider Wall Switches
- Decorative Lights in Living Room and Bedroom
- Cable TV/DSS/VCR Ready with Video Control Box
- TV Antenna with New Cable Box
- Telephone Jacks in Dinette and Bedroom Areas

- Dual Exterior Cable/Satellite Receptacles

### Options

- Home Stereo with Surround Sound and DVD Player (32FKD, 33FKS)
- Exterior AM/FM Radio with CD Player
- Two Exterior Security Lights - Individual Switches in the Utility Center
- One 12V Deep Cycle Battery
- Two 12V Deep Cycle Batteries
- Solar Prep

## PLUMBING AND L.P. SYSTEMS

### Standard Features

- White Composite Kitchen Sink
- New Chrome Kitchen Faucet with Pull-Out Sprayer
- Demand Water System with Water Pump
- 10-Gallon LP Gas/Electric Water Heater with Electronic Ignition (DSI)
- Bathroom Sink with New Brass Plated Single Handle Faucet
- Garden Tub with Glass Door (33FKS)
- Fiberglass One-Piece Tub/Shower with Glass Door (N/A: 33FKS, 34SKD)
- Fiberglass One-Piece Shower with Glass Door (34SKD)
- Brass Shower Hose and Head
- Water Management System with Bottom Drain, including Outside Shower
- Water Heater By-Pass Kit
- No-Fuss Flush Holding Tank Rinsing System
- Pump Valve for Water Fill
- Two 30 Lb. LP Tanks with Automatic Changeover and Cover
- Water Heater Switch

### Options

- Water Filter System in Kitchen
- Fiberglass One-Piece Tub with Glass Door (34SKD)

## HEATING, VENTS AND AIR CONDITIONING

### Standard Features

- 30M BTU Electronic Ignition Furnace (29SKS)
- 35M BTU Electronic Ignition Furnace (N/A: 29SKS)
- One 13.5M BTU Air Conditioner, High Capacity with Remote
- In-Floor Ducted Heating System
- Manual Roof Vent
- 12V Roof Vent in Bathroom

### Options

- 15.0M BTU High Capacity Air Conditioner ILO 13.5M with Remote
- 15.0M BTU High Capacity Heat Pump Air Conditioner ILO 13.5M with Remote
- 12V Roof Vents
- Attic Fan with Thermo and Rain Sensor with 2-Way Switch

## WINDOWS, DOORS AND AWNINGS

### Standard Features

- Tinted Radius Windows
- Tinted Skylight in Bathroom
- 30" Radius Main Entrance Door with Anti-Skid Steps
- 26" Bedroom Entrance Door with Anti-Skid Steps
- Semi Flush Travel Awning

### Options

- Slide-Out Awning on All Slide-Out Houses
- Color Coordinated Texturized Fabric Awning
- Bedroom Awning over Slide-Out with Weatherguard (32FKD, 34SKD)
- Patio Awning with Texturized Fabric and Alumagard Cover
- Bay Window at Dinette (N/A in Dual Pane)
- Swing Out Entry Door Handle
- Dual Pane Windows with Dark Tint

## WINDOW TREATMENTS

### Standard Features

- Living Room: Mini Blinds, Padded Valances and Lambrequins
- Kitchen: Mini Blinds and Valance

### Options

- Pleated Day/Black-Out Shades, Color Coordinated in Living Area and Bedroom

## SAFETY FEATURES

### Standard Features

- Fire Extinguisher
- Deadbolt Lock(s) on Entrance Door(s)
- 120V GFI Protected Outlets (Kitchen, Bath, Exterior)
- Breakaway Switch
- Safety Chains
- Plug Guard for 12V Cord
- LP Gas Detector
- Smoke Detector
- Egress Window(s)
- Safety Glass
- Cable Store Retractable Safety System

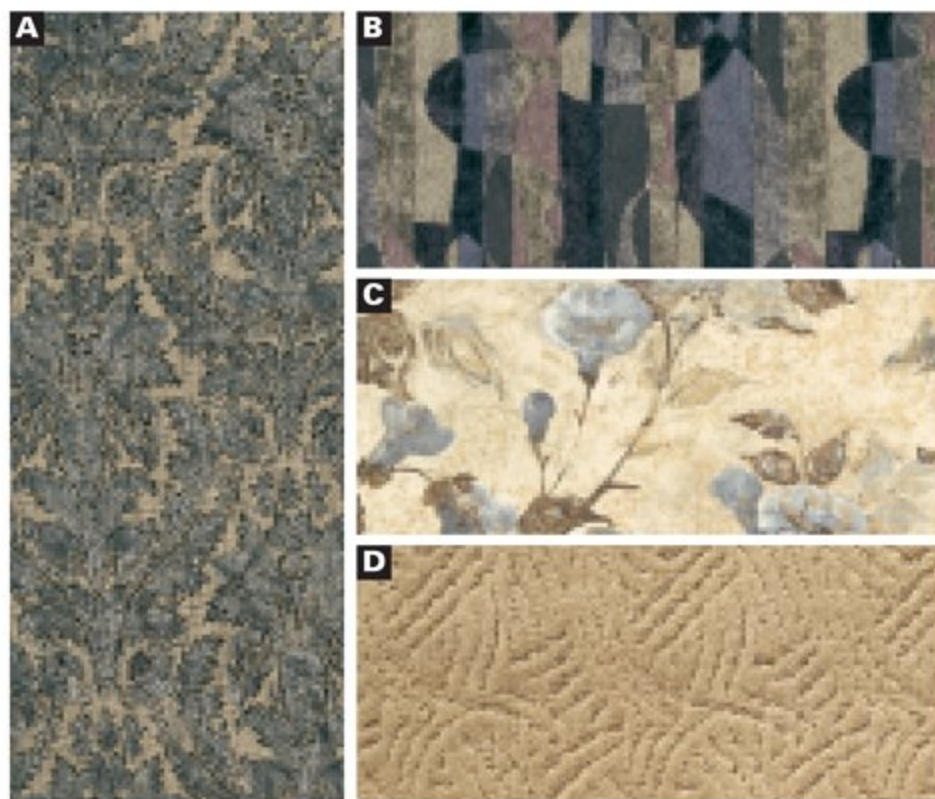


# EXTERIOR COLORS | FABRICS | WOODS



50TH ANNIVERSARY GOLDEN HERITAGE

**A** Sofa **B** Accent **C** Bedspread **D** Carpet



ASTORIA BLUE



TRANQUIL GARDEN



SUNSET MOSAIC



VANDERBILT TAN



VINTAGE OAK



LIGHT MAPLE

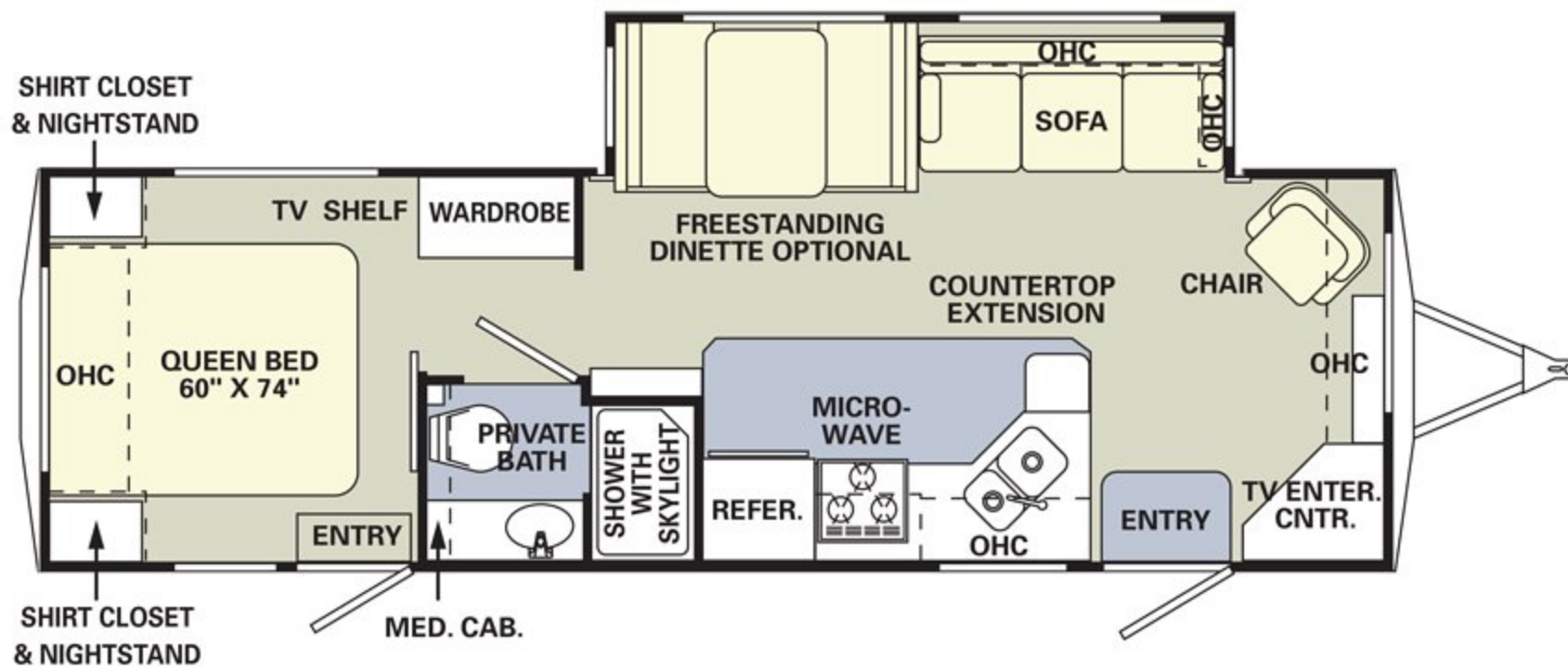


WALNUT

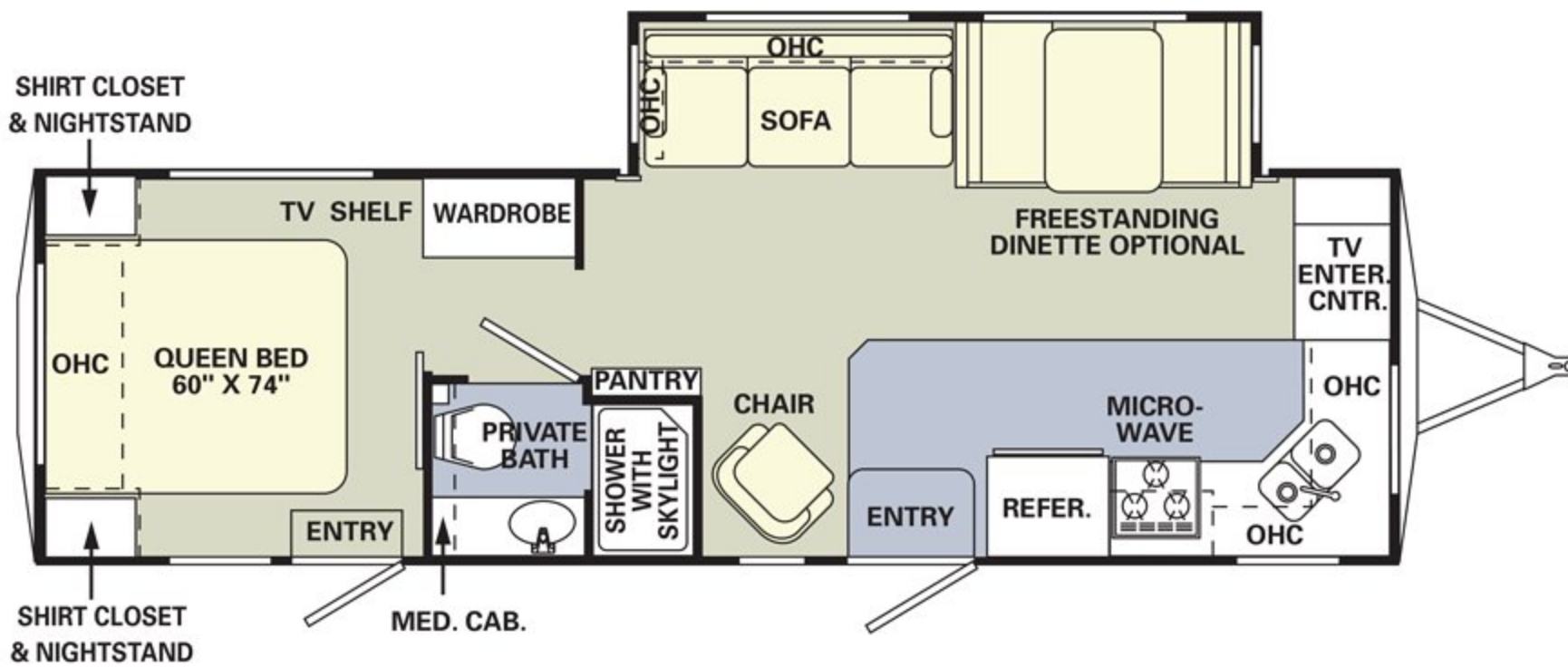


# PRESIDENTIAL TRAVEL TRAILER FLOORPLANS

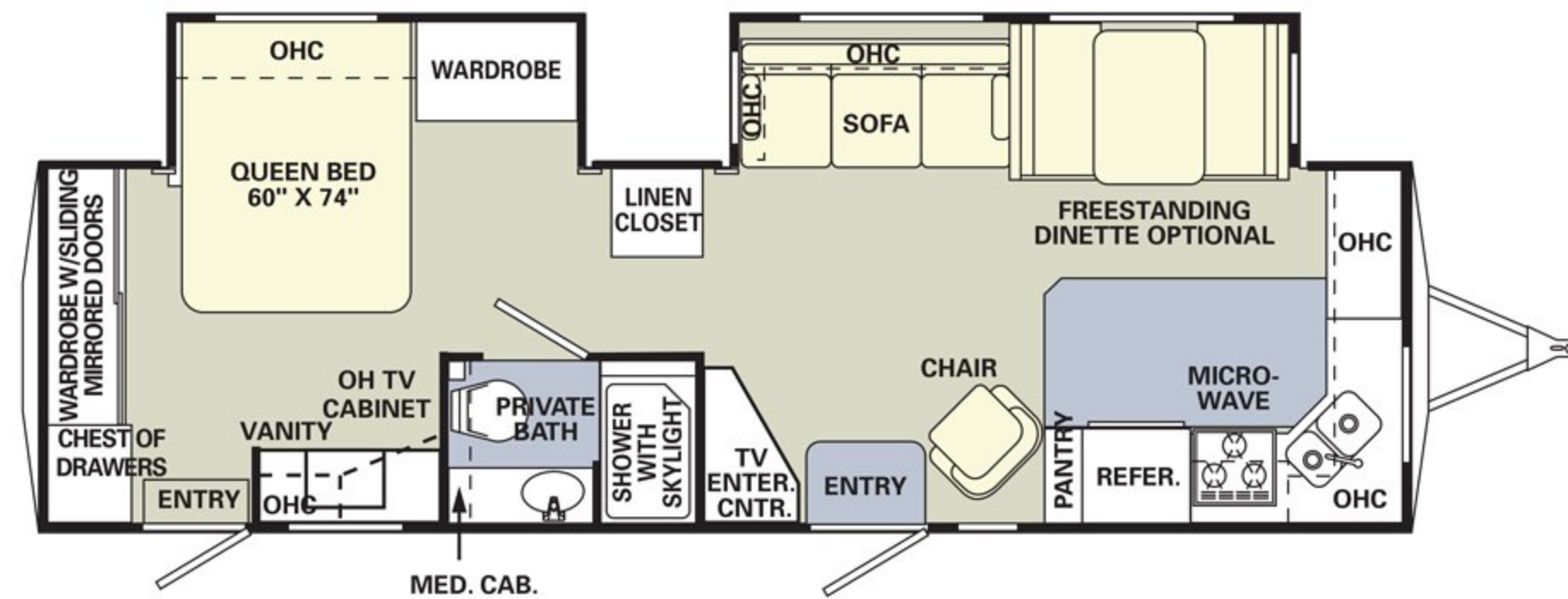
29SKS



30FKS



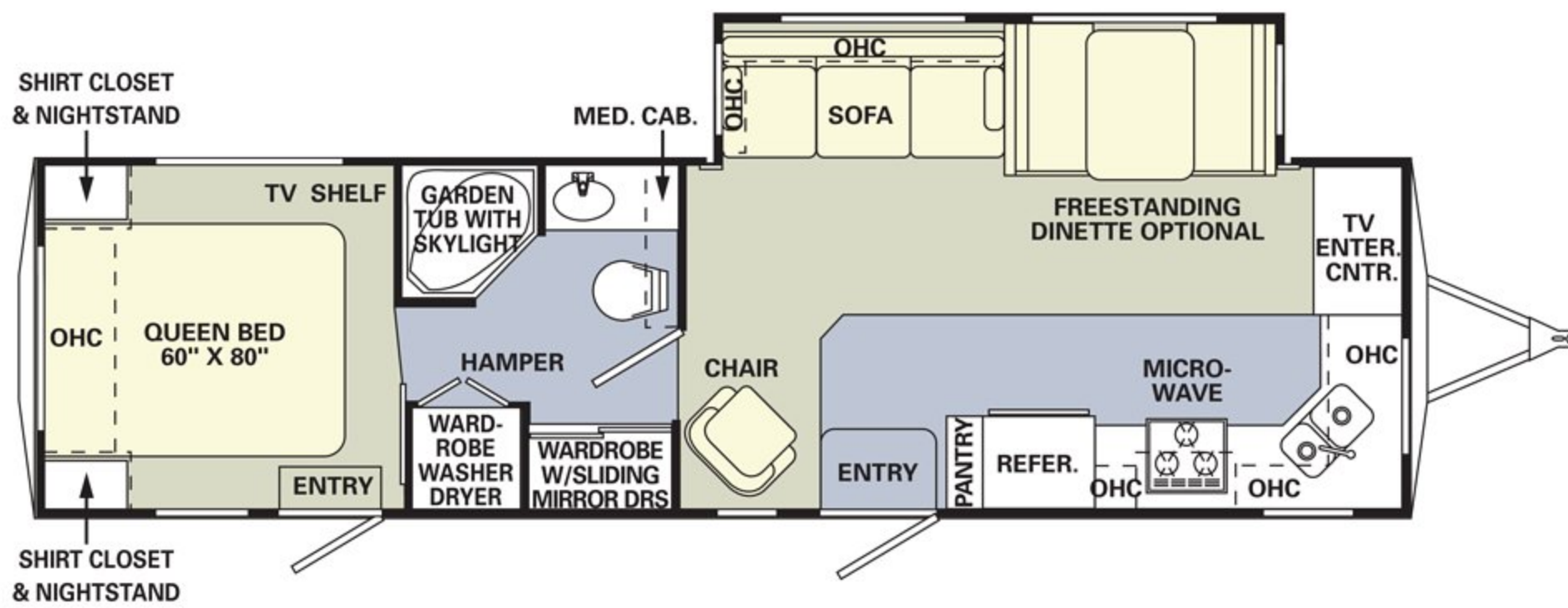
32FKD



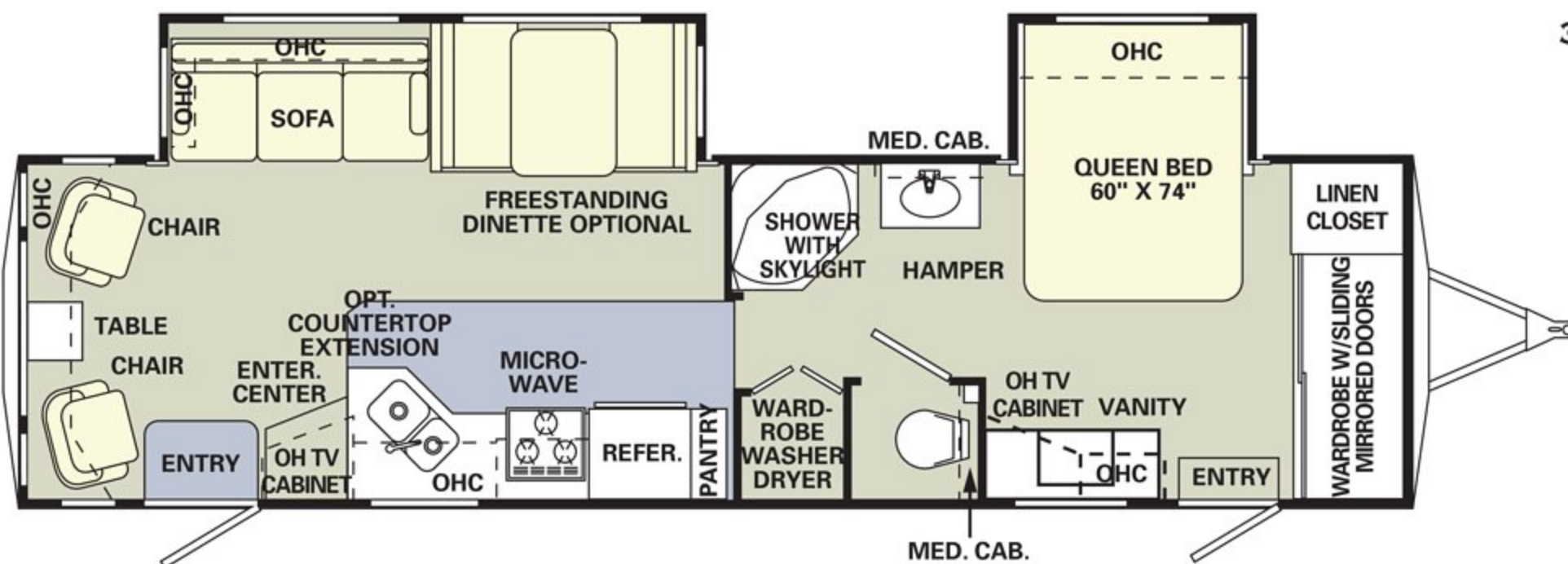


# PRESIDENTIAL TRAVEL TRAILER FLOORPLANS

33 FKS


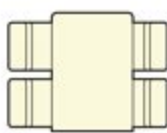
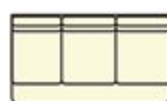
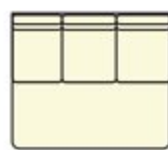
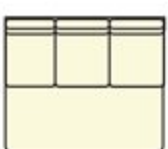


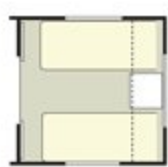


34 SKD



## OPTIONAL ITEMS:

- CARPET
- LINOLEUM

			
Coffee Table	Freestanding Dinette with 4 Chairs	Hide-A-Bed Sleeper Sofa with Footrests	Hide-A-Bed Sofa
			
Ultraleather™ Hide-A-Bed Sofa	Recliner (Ultraleather™ or Fabric)	Shower/Tub	Twin Beds with Nightstand



# HOLIDAY RAMBLER 2004 PRESIDENTIAL

## NOW YOU'RE ON YOUR WAY.

THE MOMENT YOU TAKE TO THE ROAD IN A NEW HOLIDAY RAMBLER, YOU'LL KNOW WHAT IT MEANS TO BECOME PART OF A RICH, COLORFUL HERITAGE. BECAUSE FROM THAT MOMENT, YOU'RE INVITED TO JOIN US WHEREVER WE GATHER — AT



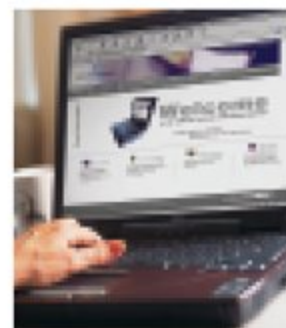
RALLIES AND EVENTS ACROSS THE COUNTRY. WHEN YOU PURCHASE A NEW HOLIDAY RAMBLER, YOU ARE ELIGIBLE TO RECEIVE A FREE ONE-YEAR MEMBERSHIP IN THE HOLIDAY RAMBLER CLUB. AND

TO KEEP YOU INFORMED OF ALL THE LATEST NEWS AND EVENTS, YOU'LL ALSO RECEIVE A SUBSCRIPTION TO OUR HOLIDAYS MAGAZINE. OUR WEBSITE ALSO PROVIDES VALUABLE INFORMATION AND IS A CONVENIENT WAY TO CONTACT US

ANYTIME. IN ADDITION, YOU ARE AUTOMATICALLY ENROLLED FOR ONE YEAR IN OUR OWNER ADVANTAGE PROGRAM. WITH THIS IMPRESSIVE ROADSIDE ASSISTANCE PACKAGE, MASTER CERTIFIED RVDA TECHNICIANS AND ASE CERTIFIED TECHNICIANS ARE ON CALL 24 HOURS A DAY TO HANDLE ANY PROBLEMS YOU MAY EXPERIENCE WITH YOUR TOWABLE. THE OWNER ADVANTAGE



PROGRAM ALSO INCLUDES THE FOLLOWING BENEFITS: 24-HOUR ROADSIDE ASSISTANCE, FUEL DELIVERY, TIRE CHANGE, BATTERY JUMP START, LOCKOUT SERVICE, TRIP ROUTING AND MAPS, AND MUCH MORE.



[www.holidayrambler.com](http://www.holidayrambler.com)



**HOLIDAY RAMBLER**  
*This is Living®*

  
MONACO COACH CORPORATION

**(800) 245-4778**

Monaco is traded on the New York Stock Exchange under the listing MNC © 2003, Monaco Coach Corporation 0603 NPN:BROHPRE Litho in USA.

