



04 CAMELOT by Monaco

04 CAMELOT
WHERE LUXURY MEETS ADVENTURE.





04 CAMELOT by Monaco

04 CAMELOT
WHERE LUXURY MEETS ADVENTURE.



YOU'VE JUST ENTERED YOUR DREAM WORLD.

Welcome to the 2004 Camelot. Where you'll find everything you need for a lifetime of adventures on the road. Like spacious triple and new quad slide-out floorplans, luxurious furnishings and five sumptuous decors. You'll also choose from six beautiful cabinet styles, including oak, cherry, maple and walnut — each with solid wood raised panel doors. This year, we've added the elegant touch of crown molding in the living room and bedroom, and you have the option of beautiful Wilsonart® flooring in the kitchen and bath.



① Our exclusive **ENTRY DOOR** design features a **THREE-POINT POSI-LOCK** mechanism and a **REMOVABLE SCREEN**, for a quieter ride and better visibility while you're on the road.

② *The Camelot **LIVING ROOM**, 40PST, in Bal Harbor with Natural Cherry woodwork.*

③ *The Camelot **LIVING ROOM and KITCHEN**, 40DST, in Grand Champion with Ralph Lauren fabrics and Maple woodwork.*



YOU'VE JUST ENTERED YOUR DREAM WORLD.

Welcome to the 2004 Camelot. Where you'll find everything you need for a lifetime of adventures on the road. Like spacious triple and new quad slide-out floorplans, luxurious furnishings and five sumptuous decors. You'll also choose from six beautiful cabinet styles, including oak, cherry, maple and walnut — each with solid wood raised panel doors. This year, we've added the elegant touch of crown molding in the living room and bedroom, and you have the option of beautiful Wilsonart® flooring in the kitchen and bath.



①

① Our exclusive **ENTRY DOOR** design features a **THREE-POINT POSI-LOCK** mechanism and a **REMOVABLE SCREEN**, for a quieter ride and better visibility while you're on the road.

② *The Camelot **LIVING ROOM**, 40PST, in Bal Harbor with Natural Cherry woodwork.*

③ *The Camelot **LIVING ROOM** and **KITCHEN**, 40DST, in Grand Champion with Ralph Lauren fabrics and Maple woodwork.*



②



3



3







TAKE YOUR SEAT, AND TAKE COMMAND OF THE ROAD.

Behind the wheel of the Camelot, you'll find the perfect combination of luxury, power and control. Automatic traction control and anti-lock braking systems combine to make this one of the safest coaches on the road. Plus, you have before you a wide array of high-tech features, including the color rear vision system with audio, power sunvisors, and an optional CB radio. And thanks to the lighted VIP Smartwheel®, you'll have many controls right at your fingertips.

① To help you monitor a wide range of vital functions, the coach is equipped with the remarkable **ALADDIN VIDEO COACH SYSTEM**. Aladdin allows you to easily check engine and transmission temperatures, fluid levels, electrical status and tank capacities. In addition, you can also track and store important trip information, such as travel time and fuel consumption.

② The coach's many high-tech options include a **HOME THEATER SYSTEM** with **DVD PLAYER**, a **10 DISC CD CHANGER**, and the **SIRIUS** satellite radio system (requires subscription). In addition, you have the option of the remarkable **ONSTAR® MOBILE ASSISTANCE** system, giving you live access to all its services, 24 hours a day.

③ Our **LEATHER FACED COCKPIT SEATS** feature six-way power controls and are designed for maximum comfort, with the safety belts mounted on the seats. On the co-pilot's side the options include a power footrest and an extra-wide seat.



TAKE YOUR SEAT, AND TAKE COMMAND OF THE ROAD.

Behind the wheel of the Camelot, you'll find the perfect combination of luxury, power and control. Automatic traction control and anti-lock braking systems combine to make this one of the safest coaches on the road. Plus, you have before you a wide array of high-tech features, including the color rear vision system with audio, power sunvisors, and an optional CB radio. And thanks to the lighted VIP Smartwheel®, you'll have many controls right at your fingertips.

① To help you monitor a wide range of vital functions, the coach is equipped with the remarkable **ALADDIN VIDEO COACH SYSTEM**. Aladdin allows you to easily check engine and transmission temperatures, fluid levels, electrical status and tank capacities. In addition, you can also track and store important trip information, such as travel time and fuel consumption.

② The coach's many high-tech options include a **HOME THEATER SYSTEM** with **DVD PLAYER**, a **10 DISC CD CHANGER**, and the **SIRIUS** satellite radio system (requires subscription). In addition, you have the option of the remarkable **ONSTAR® MOBILE ASSISTANCE** system, giving you live access to all its services, 24 hours a day.

③ Our **LEATHER FACED COCKPIT SEATS** feature six-way power controls and are designed for maximum comfort, with the safety belts mounted on the seats. On the co-pilot's side the options include a power footrest and an extra-wide seat.

SERVED JUST THE WAY YOU LIKE IT.

You can never underestimate the magic of a home-cooked meal. And in the Camelot's kitchen, it's made all the easier. You'll find top-of-the-line appliances including a large double-door refrigerator with raised panel doors, a recessed cooktop with two burners, and a spacesaver convection microwave oven with touch control. Beautiful plank flooring is optional in a style to match your choice of cabinets. And you'll also enjoy such distinctive touches as a solid surface countertop with stainless steel sink, a built-in storage space for the countertop covers, and stylish rope lighting in the toe kicks, in both the kitchen and bathroom.



① The Camelot comes standard with our remarkable **LEGLESS DINETTE** table, featuring a beautiful solid surface top. It's adjustable in length as well as from side to side, to ensure the comfort of everyone seated. And to complete the luxury, there are two stylish upholstered chairs and two folding chairs.

SERVED JUST THE WAY YOU LIKE IT.

You can never underestimate the magic of a home-cooked meal. And in the Camelot's kitchen, it's made all the easier. You'll find top-of-the-line appliances including a large double-door refrigerator with raised panel doors, a recessed cooktop with two burners, and a spacesaver convection microwave oven with touch control. Beautiful plank flooring is optional in a style to match your choice of cabinets. And you'll also enjoy such distinctive touches as a solid surface countertop with stainless steel sink, a built-in storage space for the countertop covers, and stylish rope lighting in the toe kicks, in both the kitchen and bathroom.



The Camelot comes standard with our remarkable **LEGLESS DINETTE** table, featuring a beautiful solid surface top. It's adjustable in length as well as from side to side, to ensure the comfort of everyone seated. And to complete the luxury, there are two stylish upholstered chairs and two folding chairs.







THE CAMELOT BEDROOM

The Camelot owes its gracious private quarters to its roomy overhead cabinets and features like the 19" stereo TV and the oversized rear wardrobe closet with mirrors. Other highlights include the beautifully coordinated bedspread and pillows, decorative etched mirrors, the dresser and nightstands with solid surface tops, and the redesigned slide-out with backboard, mirror and window. The Camelot bedroom, 40PST, is shown above in Bal Harbor with Natural Cherry woodwork.



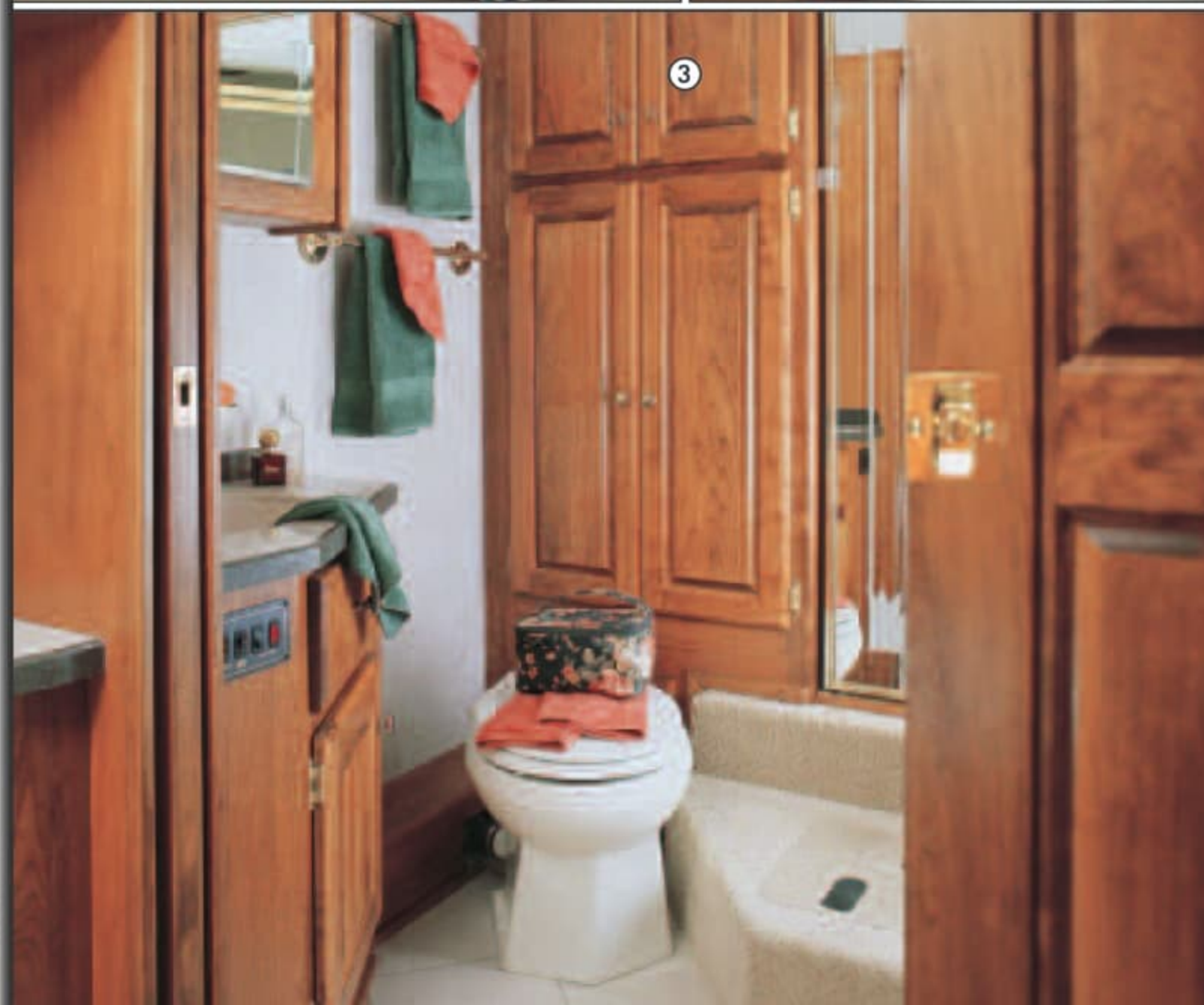
THE CAMELOT BEDROOM

The Camelot owes its gracious private quarters to its roomy overhead cabinets and features like the 19" stereo TV and the oversized rear wardrobe closet with mirrors. Other highlights include the beautifully coordinated bedspread and pillows, decorative etched mirrors, the dresser and nightstands with solid surface tops, and the redesigned slide-out with backboard, mirror and window. The Camelot bedroom, 40PST, is shown above in Bal Harbor with Natural Cherry woodwork.

① Our optional leather faced **EASY BED** is a stylish way to expand your sleeping quarters for your kids or guests.

② To help you keep your coach tidy, we've added a new tip-out clothes **HAMPER** that's built into the dresser.

③ The 40DST model features our innovative **BATH-AND-A-HALF** floorplan. For the convenience of guests, there's a half-bath between the kitchen and the bedroom. And for maximum privacy, the full bath, shown here, is located in the rear of the coach.



① Our optional leather faced **EASY BED** is a stylish way to expand your sleeping quarters for your kids or guests.

② To help you keep your coach tidy, we've added a new tip-out clothes **HAMPER** that's built into the dresser.

③ The 40DST model features our innovative **BATH-AND-A-HALF** floorplan. For the convenience of guests, there's a half-bath between the kitchen and the bedroom. And for maximum privacy, the full bath, shown here, is located in the rear of the coach.



IT'S ALL RIDING ON A ROADMASTER.

Want to know the secret to the best ride and handling in the industry? A custom built chassis by Roadmaster. You see, Roadmaster chassis are designed to the exacting specifications of each and every model of our diesel coaches. That means you'll never find this year's coach on last year's chassis. And you'll always know you're riding on a chassis that's designed exclusively for a luxury diesel motorhome. So take a moment to learn about a few of the Roadmaster's impressive features. Because only this kind of highly synchronized teamwork can give you this level of performance.



RR8S-SERIES AT A GLANCE

- H-Frame cushion air glide suspension, with 8 outboard mounted air bags and 8 shock absorbers, prevents road trauma from reaching the coach.
- Steel cage cockpit provides maximum safety.
- Aluminum intercooler and radiator offer 30% better cooling and a lighter design.
- Adjustable brake and accelerator pedals make driving safer and more comfortable for people of all heights.
- The rails are positioned 44 inches apart at the engine for lower engine mounting.
- The drive line is carried straight into the engine for less vibration. And maximum airflow provides the engine with leaner, cooler air and increased power.
- Raised rail design provides for larger full pass-through storage bays with flush floors and increased storage under the bed.
- Higher air intake provides the engine with cleaner, cooler air.

IT'S ALL RIDING ON A ROADMASTER.

Want to know the secret to the best ride and handling in the industry? A custom built chassis by Roadmaster. You see, Roadmaster chassis are designed to the exacting specifications of each and every model of our diesel coaches. That means you'll never find this year's coach on last year's chassis. And you'll always know you're riding on a chassis that's designed exclusively for a luxury diesel motorhome. So take a moment to learn about a few of the Roadmaster's impressive features. Because only this kind of highly synchronized teamwork can give you this level of performance.



RR8S-SERIES AT A GLANCE

- H-Frame cushion air glide suspension, with 8 outboard mounted air bags and 8 shock absorbers, prevents road trauma from reaching the coach.
- Steel cage cockpit provides maximum safety.
- Aluminum intercooler and radiator offer 30% better cooling and a lighter design.
- Adjustable brake and accelerator pedals make driving safer and more comfortable for people of all heights.
- The rails are positioned 44 inches apart at the engine for lower engine mounting.
- The drive line is carried straight into the engine for less vibration. And maximum airflow provides the engine with leaner, cooler air and increased power.
- Raised rail design provides for larger full pass-through storage bays with flush floors and increased storage under the bed.
- Higher air intake provides the engine with cleaner, cooler air.



Find all the latest product news and updates online: monacocoach.com

- Dual fuel fill gives you the convenience of filling the fuel tank from either side of the coach.
- Monitored leveling sensors continually adjust the air pressure at each axle to maintain a level ride and eliminate nosediving, weight transfer, and floating on curved roads. This system also stabilizes the coach on uneven surfaces.
- A 10,000 lb. hitch receiver gives the coach powerful towing capacity.
- Other features include a 3/8" thick frame rail — compared to the 1/4" of other manufacturers — and a side mounted radiator.
- Automatic Traction Control (ATC) takes over in slick conditions and applies torque to the wheels to reduce slippage and heighten control.
- Anti-lock brakes give you the confidence of superior stopping power.

①

ROOF LAYERS: (TOP TO BOTTOM)

- a. One-piece crowned fiberglass roof
- b. Luaun backing
- c. Thick, tapered bead foam insulation
- d. Aluminum double I-beam superstructure filled with fiberglass insulation
- e. Vapor barrier
- f. Structure foam: thermal insulative barrier
- g. 1/2" bead foam insulation
- h. Foam padding for extra insulation
- i. Padded vinyl ceiling

②

WALL LAYERS: (LEFT TO RIGHT)

- a. High-gloss gel coat fiberglass
- b. Aluminum superstructure
- c. Dow Structure Foam® insulation
- d. Luaun
- e. Wallpaper

③

FLOOR CONSTRUCTION: (BOTTOM TO TOP)

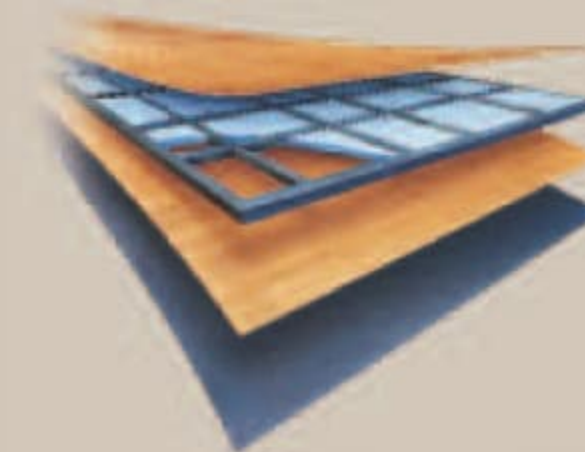
- a. Darco
- b. Luaun
- c. Blue foam
- d. 1-1/2" steel tube
- e. 5/8" Structurwood™



①



②



③



Find all the latest product news and updates online: monacocoach.com

①

②

③

ROOF LAYERS: (TOP TO BOTTOM)

- a. One-piece crowned fiberglass roof
- b. Luaun backing
- c. Thick, tapered bead foam insulation
- d. Aluminum double I-beam superstructure filled with fiberglass insulation
- e. Vapor barrier
- f. Structure foam: thermal insulative barrier
- g. 1/2" bead foam insulation
- h. Foam padding for extra insulation
- i. Padded vinyl ceiling

WALL LAYERS: (LEFT TO RIGHT)

- a. High-gloss gel coat fiberglass
- b. Aluminum superstructure
- c. Dow Structure Foam® insulation
- d. Luaun
- e. Wallpaper

FLOOR CONSTRUCTION: (BOTTOM TO TOP)

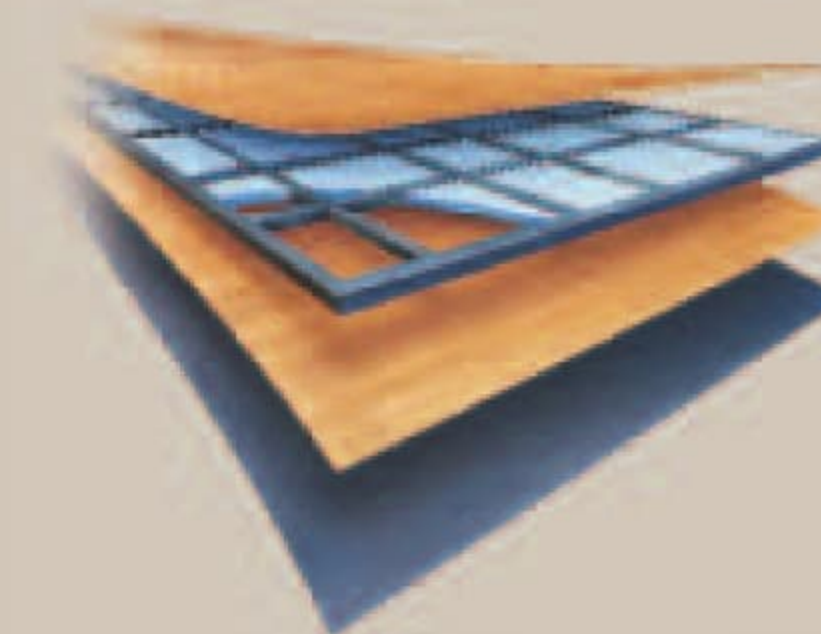
- a. Darco
- b. Luaun
- c. Blue foam
- d. 1-1/2" steel tube
- e. 5/8" Structurwood™



①



②



③

- Dual fuel fill gives you the convenience of filling the fuel tank from either side of the coach.
- Monitored leveling sensors continually adjust the air pressure at each axle to maintain a level ride and eliminate nosediving, weight transfer, and floating on curved roads. This system also stabilizes the coach on uneven surfaces.
- A 10,000 lb. hitch receiver gives the coach powerful towing capacity.
- Other features include a 3/8" thick frame rail — compared to the 1/4" of other manufacturers — and a side mounted radiator.
- Automatic Traction Control (ATC) takes over in slick conditions and applies torque to the wheels to reduce slippage and heighten control.
- Anti-lock brakes give you the confidence of superior stopping power.

EXTERIOR COLORS, FABRICS AND WOODS

The 2004 Camelot is designed to take you wherever adventure may lead — in a style all its own. Our designers have selected exquisite interior color combinations to accompany each exterior. Now, it's your turn to choose.



FABRIC SWATCHES

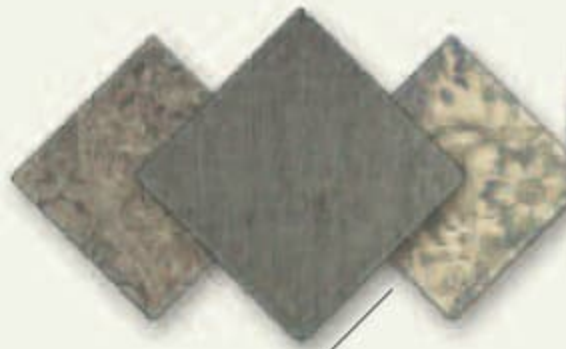
- a. *Dinette Chairs*
- b. *Sofa*
- c. *Bedsread*

Monaco is pleased to offer exclusive decors featuring Ralph Lauren fabrics.



Manufactured in, not added on. 3M Scotchgard™ Carpet Stain Release is applied during the carpet manufacturing process for a higher level of protection. Dupont Teflon® soil repellent is applied to virtually all upholstery fabric during the finishing process for superior coverage.*

*Brand and application of carpet or upholstery fabric protection may vary depending on date recreational vehicle was manufactured.



BAL HARBOR



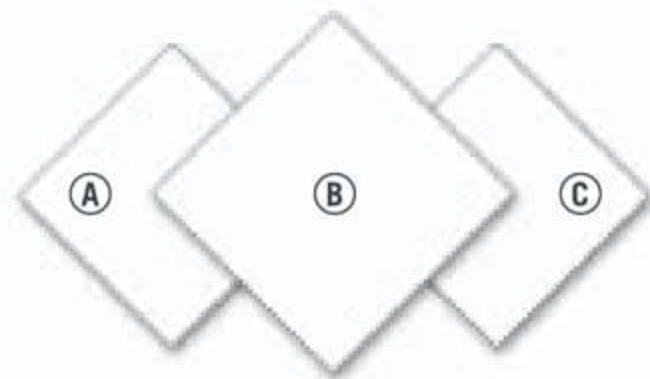
COUNTRY MANOR



DUNE

EXTERIOR COLORS, FABRICS AND WOODS

The 2004 Camelot is designed to take you wherever adventure may lead — in a style all its own. Our designers have selected exquisite interior color combinations to accompany each exterior. Now, it's your turn to choose.



FABRIC SWATCHES

- A. *Dinette Chairs*
- B. *Sofa*
- C. *Bedspread*

Monaco is pleased to offer exclusive decors featuring Ralph Lauren fabrics.



Manufactured in, not added on. 3M Scotchgard™ Carpet Stain Release is applied during the carpet manufacturing process for a higher level of protection. Dupont Teflon® soil repellent is applied to virtually all upholstery fabric during the finishing process for superior coverage.*

*Brand and application of carpet or upholstery fabric protection may vary depending on date recreational vehicle was manufactured.





SPICE



CANYON RANCH

Featuring fabrics by Ralph Lauren



GRAND CHAMPION

Featuring fabrics by Ralph Lauren

WOOD CHOICES



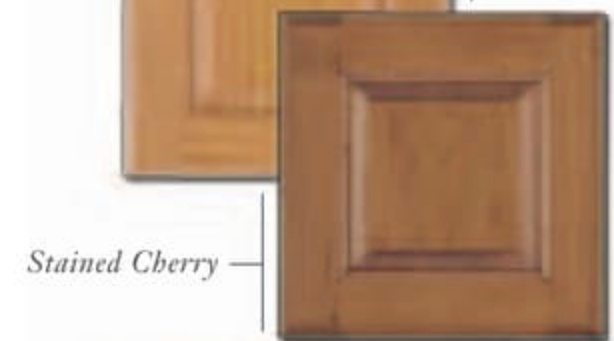
Natural Oak



Stained Oak



Natural Cherry



Stained Cherry



Natural Maple



Walnut

In addition, Wilsonart® plank flooring is optional in the kitchen and bathroom, in a selection of styles to match your choice of woodwork.



SPICE



CANYON RANCH

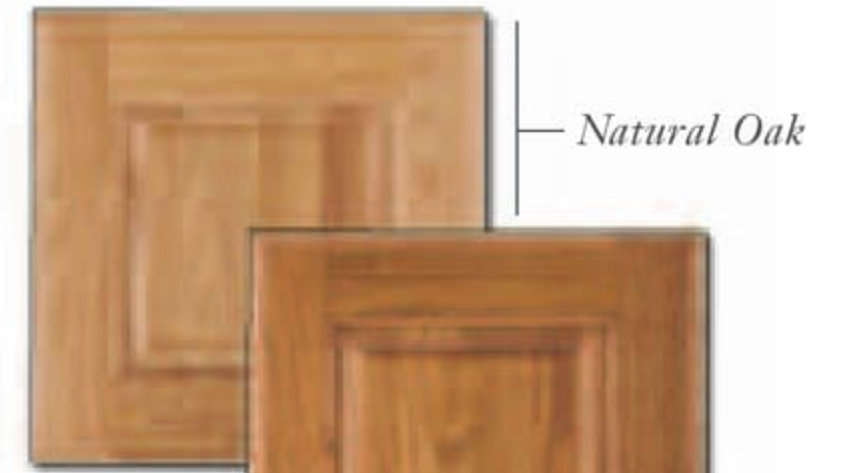
Featuring fabrics by Ralph Lauren



GRAND CHAMPION

Featuring fabrics by Ralph Lauren

WOOD CHOICES



Natural Oak

Stained Oak



Natural Cherry

Stained Cherry



Natural Maple

Walnut

In addition, Wilsonart® plank flooring is optional in the kitchen and bathroom, in a selection of styles to match your choice of woodwork.

04 FLOORPLANS

Monaco is proud to offer you a wide range of floorplans to suit your lifestyle. As you can see here, you have numerous optional features from which to choose.



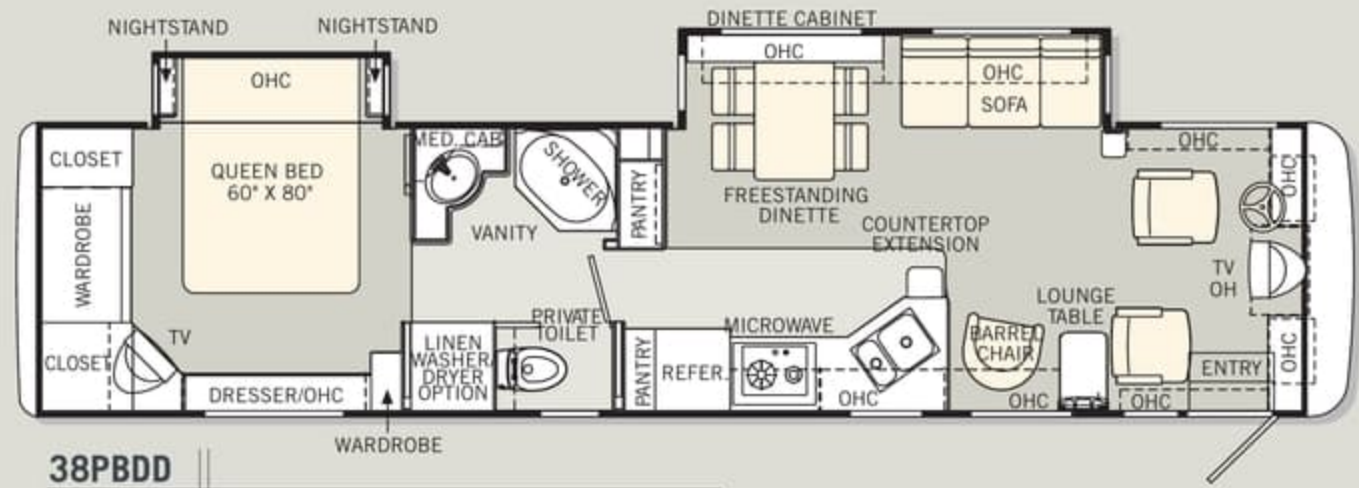
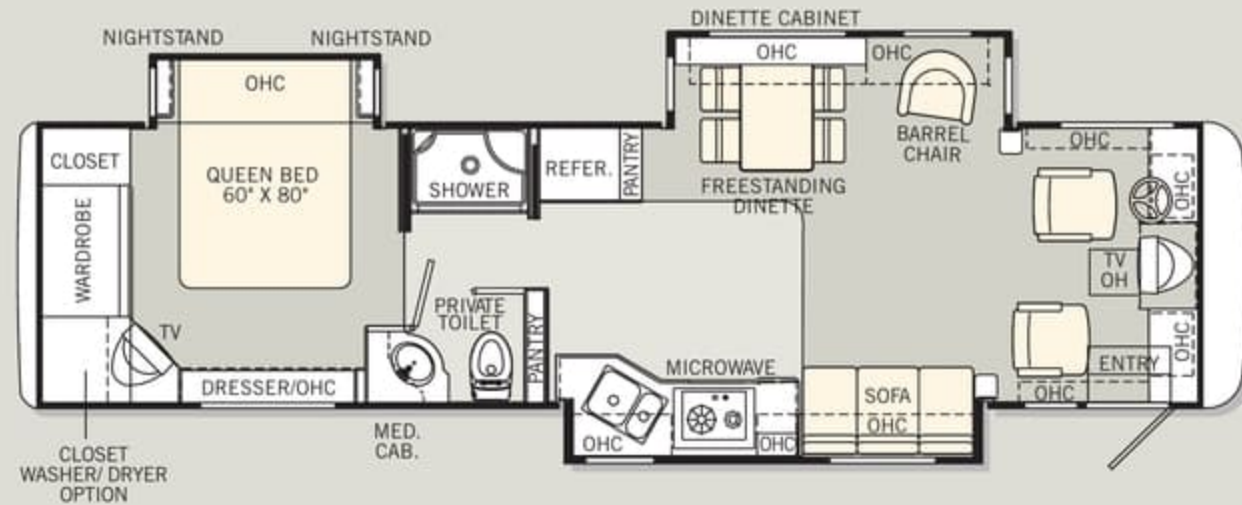
TILE



CARPET



Find all the latest product news and updates online: monacocoach.com

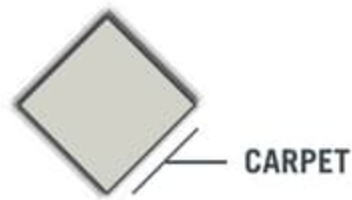


04 FLOORPLANS

Monaco is proud to offer you a wide range of floorplans to suit your lifestyle. As you can see here, you have numerous optional features from which to choose.



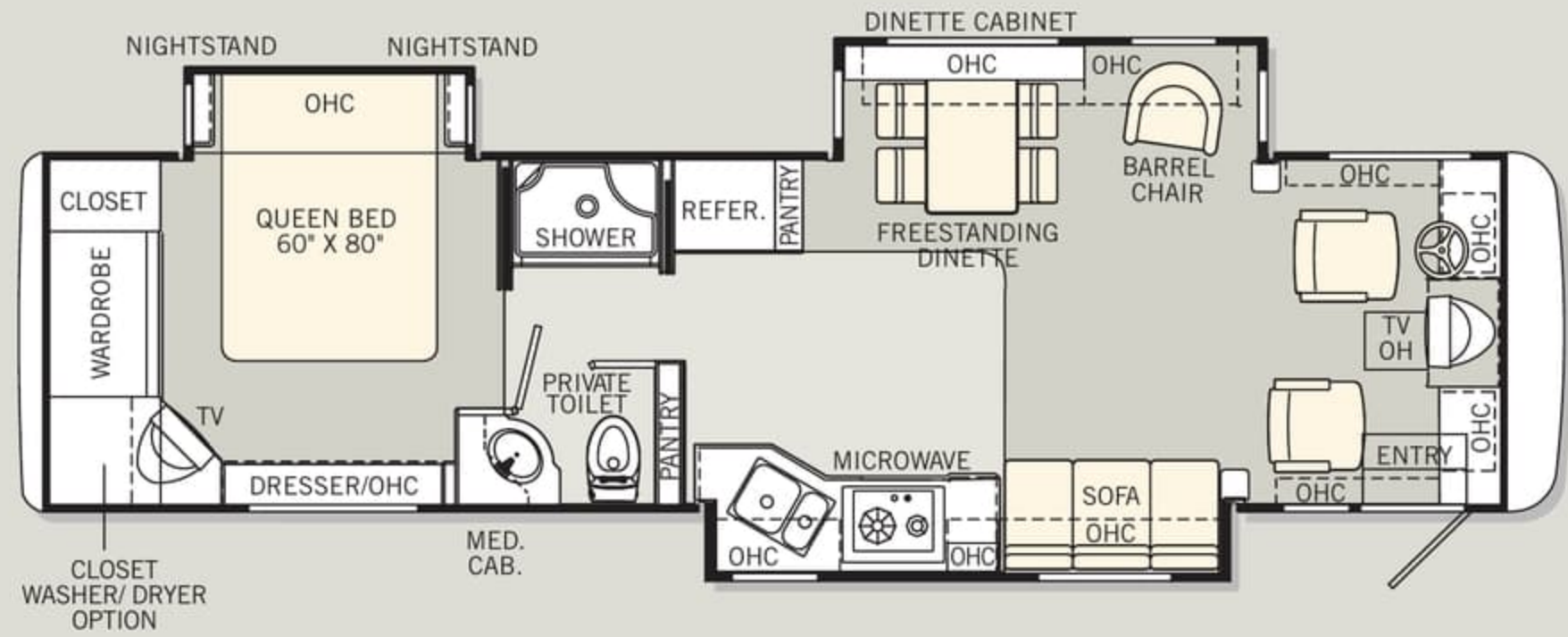
TILE



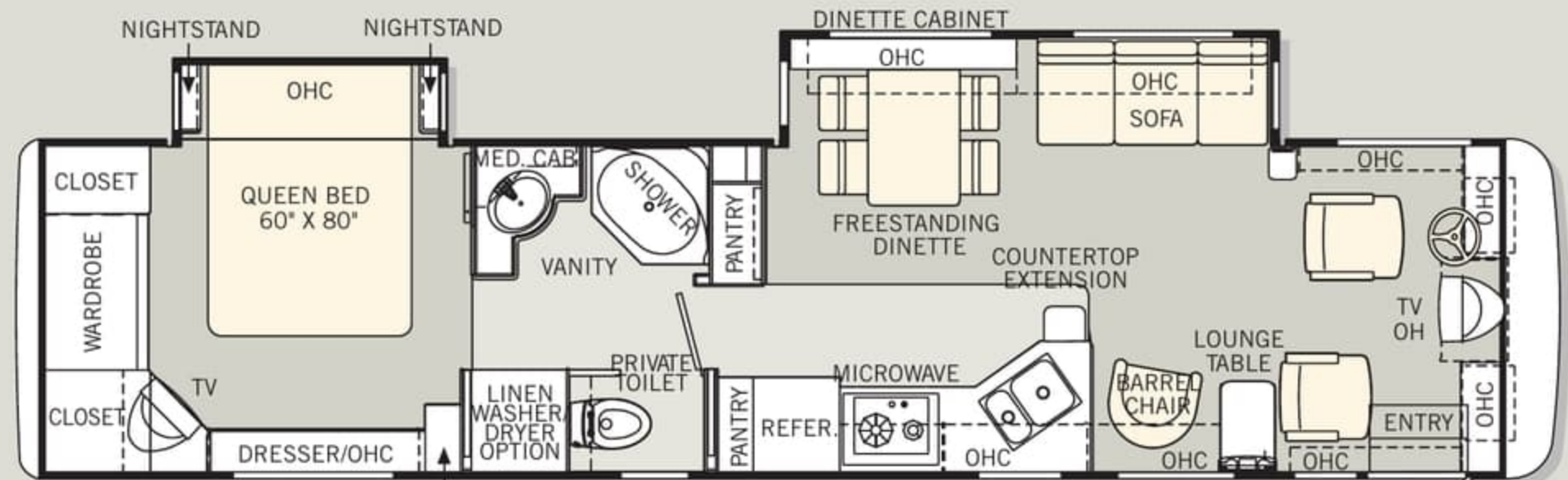
CARPET



Find all the latest product news and updates online:
monacocoach.com

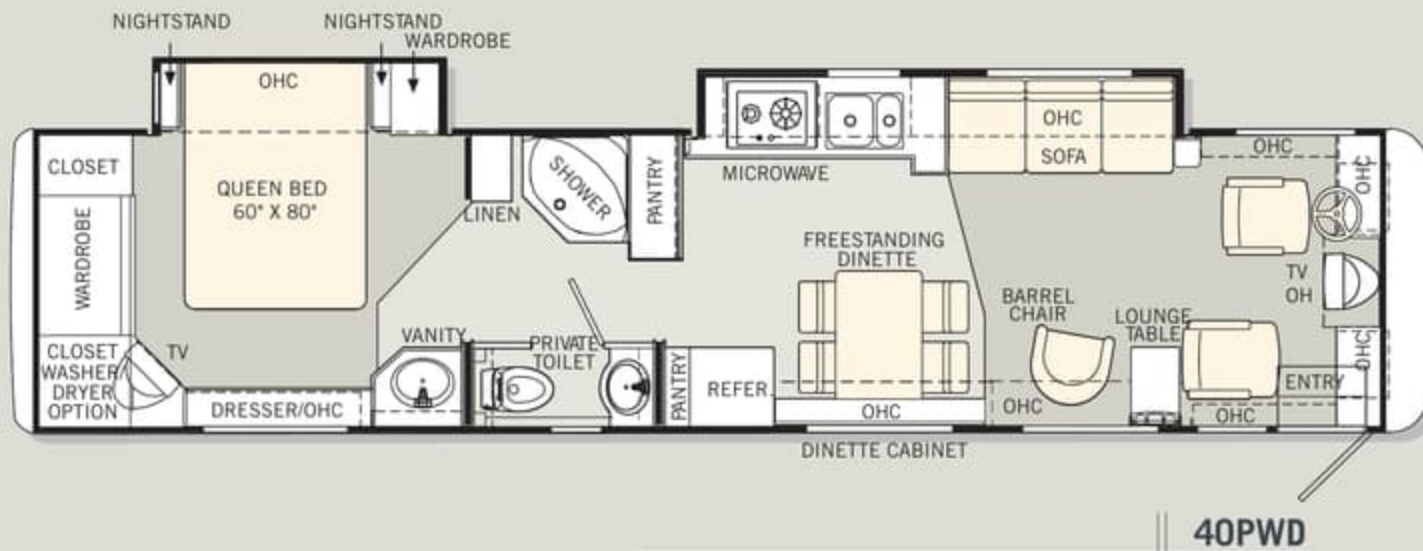
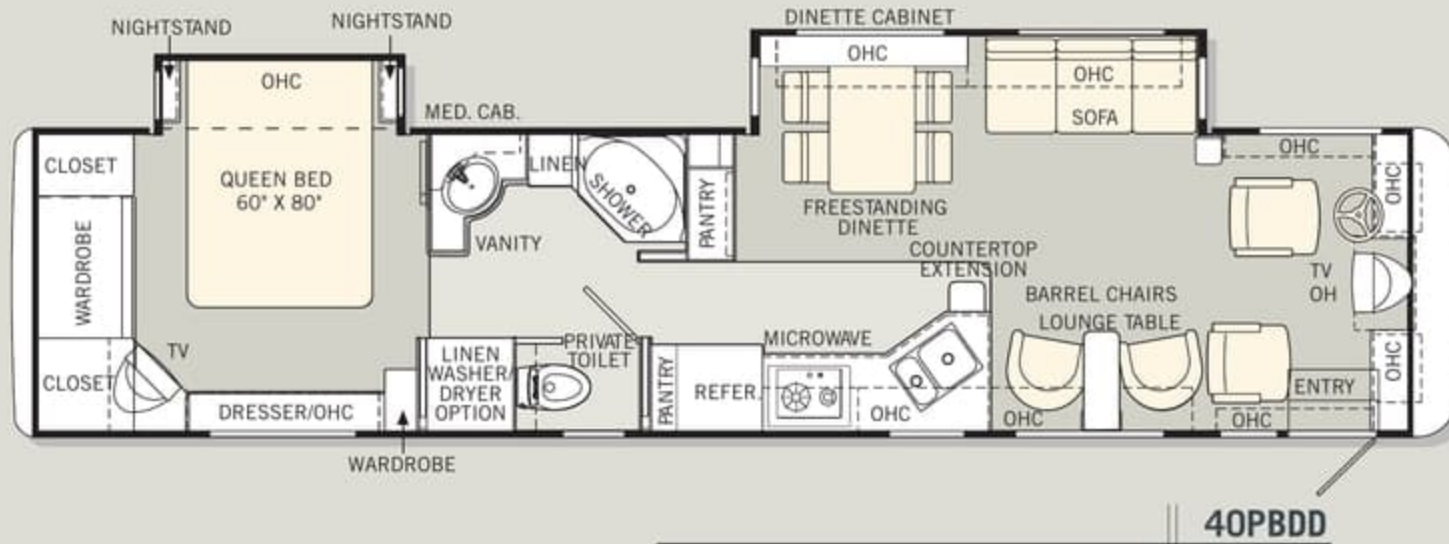
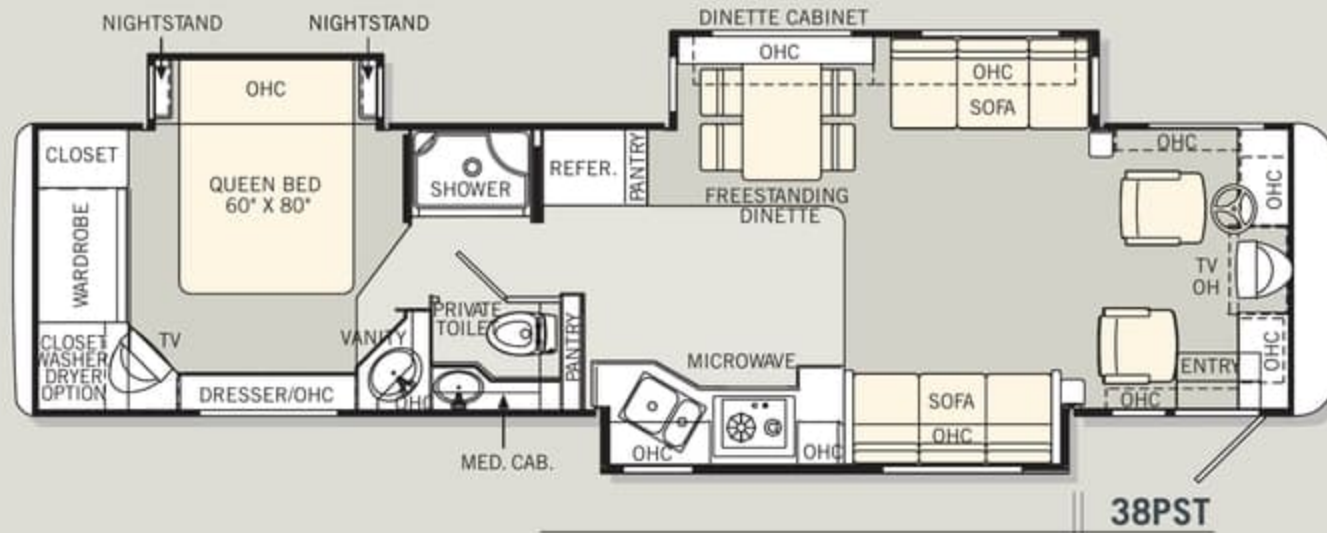


36PST



38PBDD

**MONACO FLOORPLANS
CAN BE CUSTOMIZED WITH
MANY POPULAR OPTIONS.**



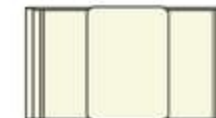
RECLINER
(N/A: 38PST, 40DST, 40PST)



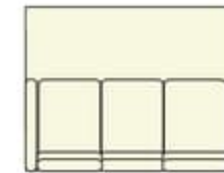
COMPUTER TABLE
(REQUIRES RECLINER,
40PBDD, 40PWD)



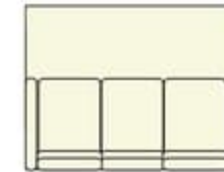
J-LOUNGE
(N/A: 38PBDD)



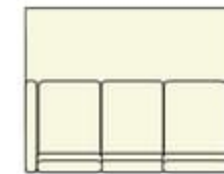
BOOTH DINETTE
(N/A: 40PDT)



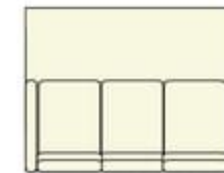
ELECTRIC SOFA
(N/A: 36PST)



MAGIC BED SOFA
(N/A: 34PST, 36PST)

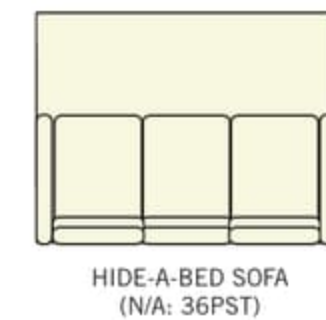
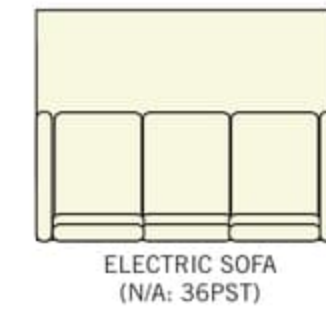
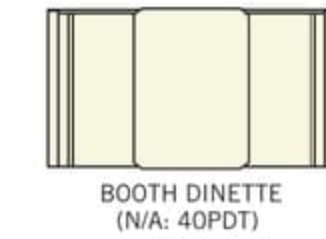
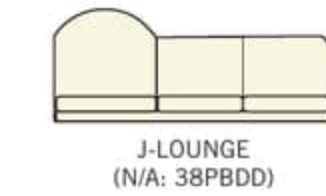
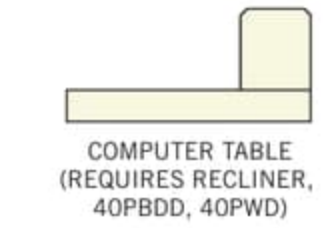
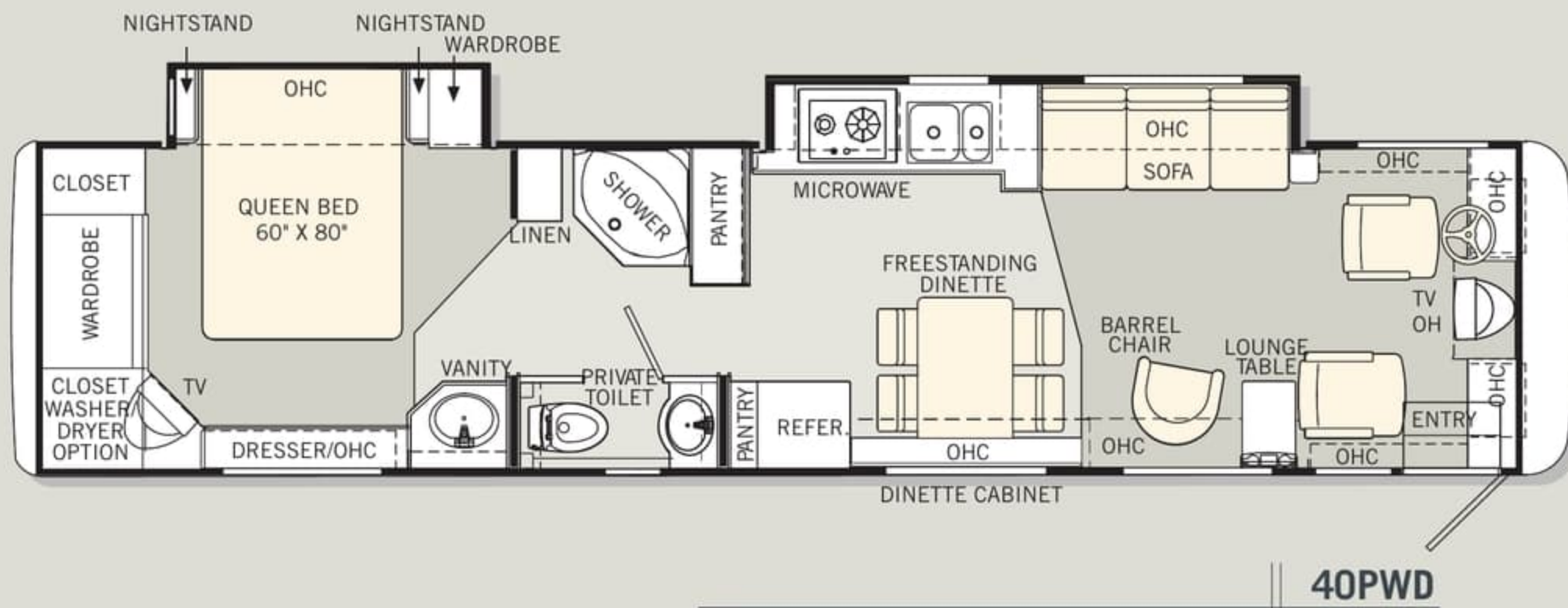
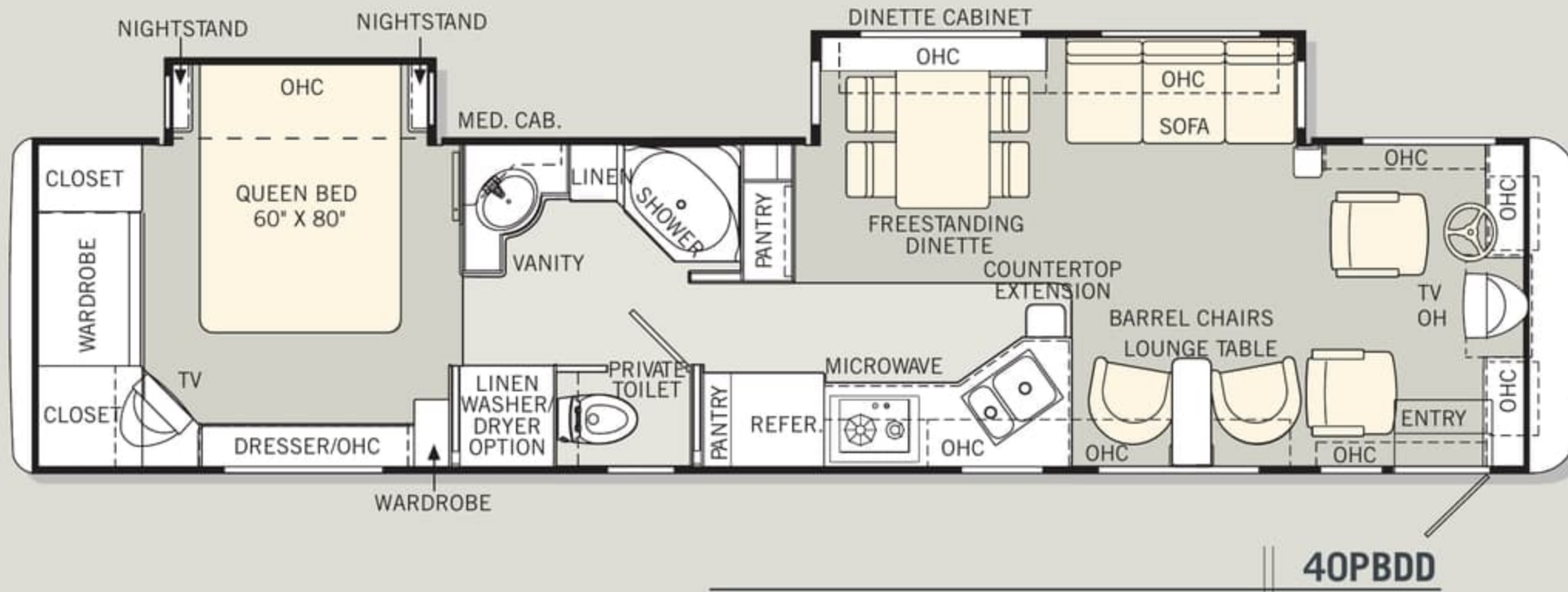
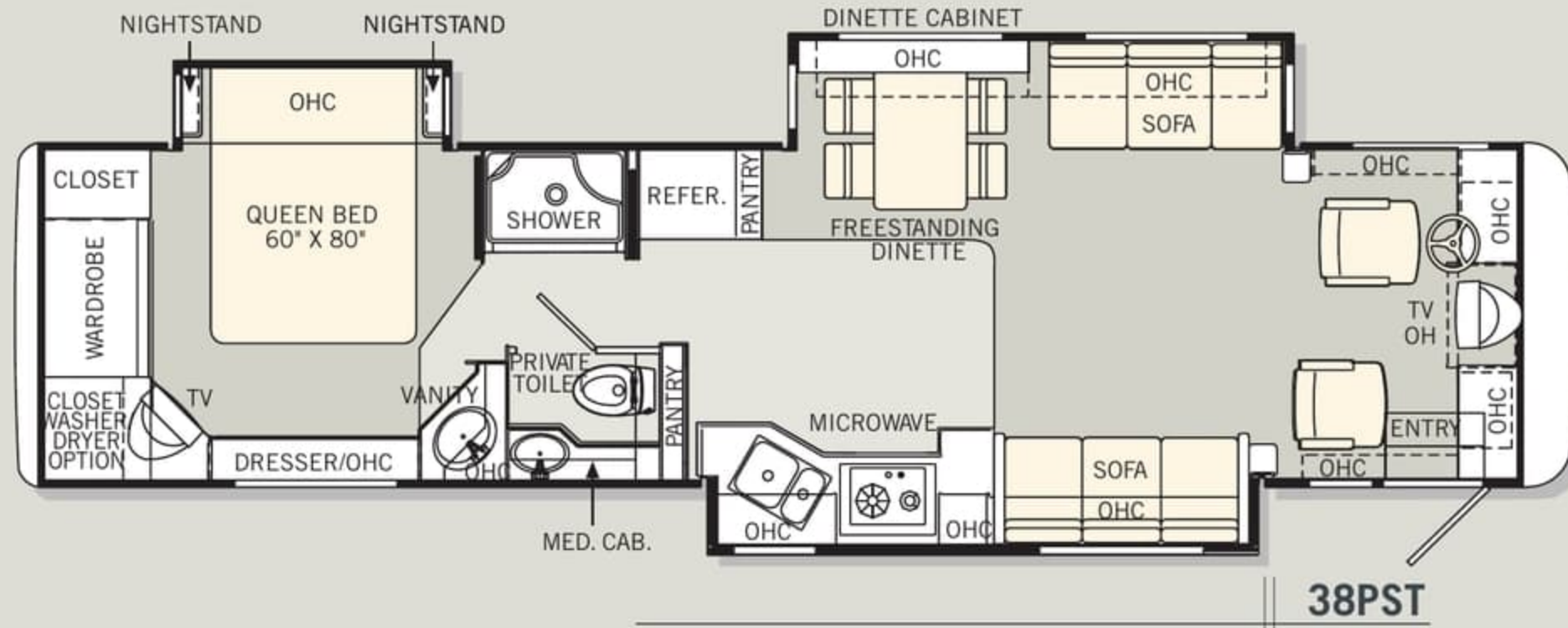


HIDE-A-BED SOFA
(N/A: 36PST)



EASY BED SOFA
(N/A: 36PST, 38PBDD)

**MONACO FLOORPLANS
CAN BE CUSTOMIZED WITH
MANY POPULAR OPTIONS.**



04 FLOORPLANS

Each year, our designers work to find new ways to maximize your living area and create valuable storage space.



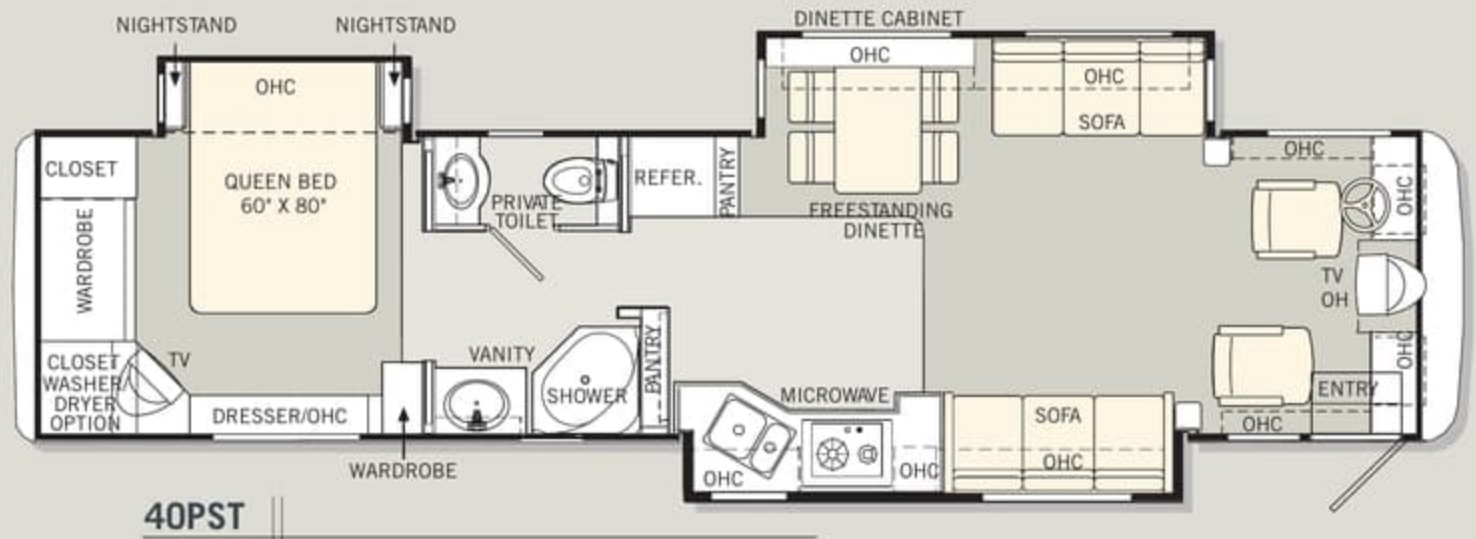
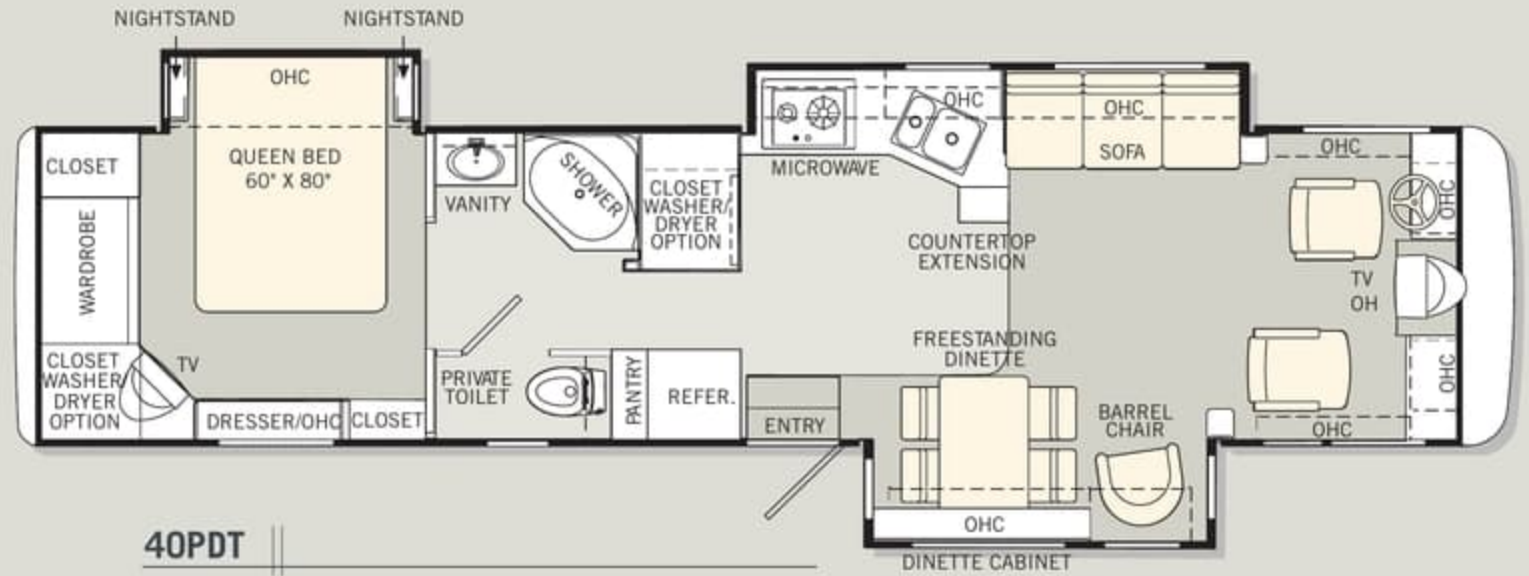
TILE



CARPET



Find all the latest product news and updates online:
monacocoach.com

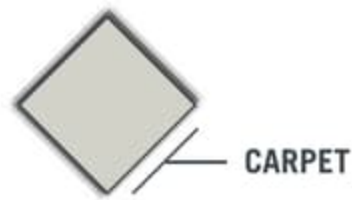


04 FLOORPLANS

Each year, our designers work to find new ways to maximize your living area and create valuable storage space.



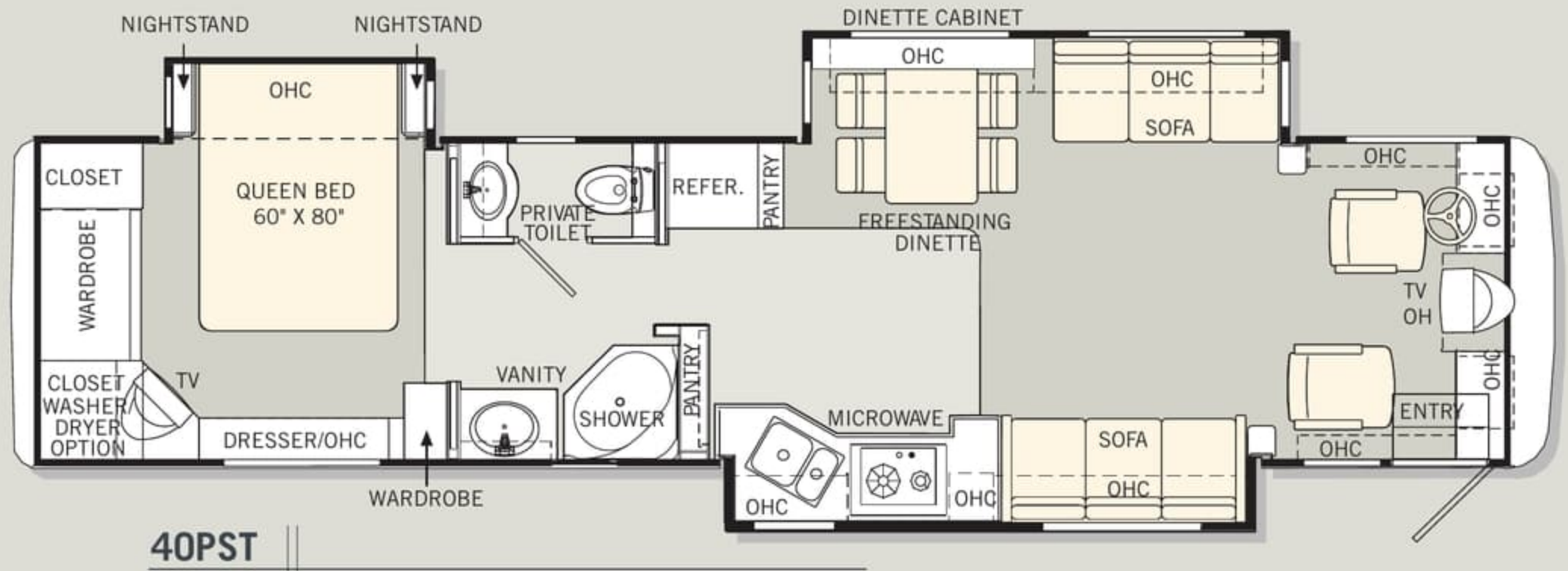
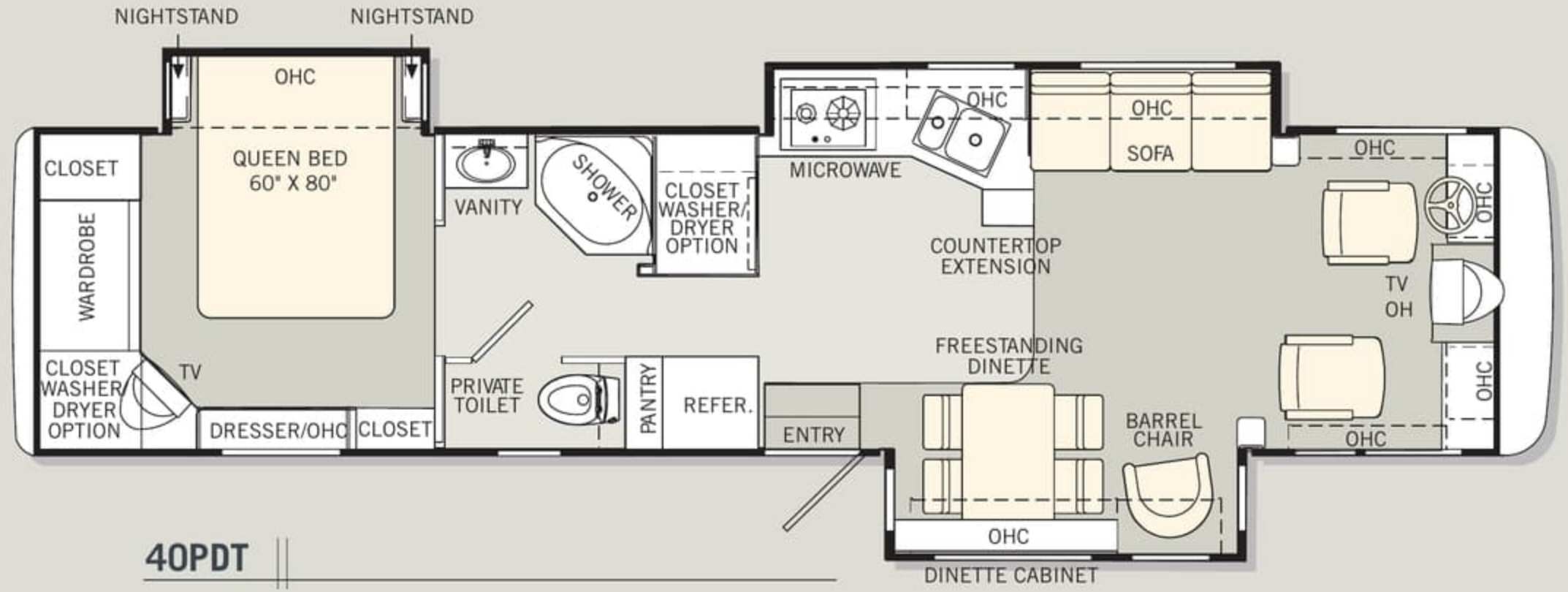
TILE



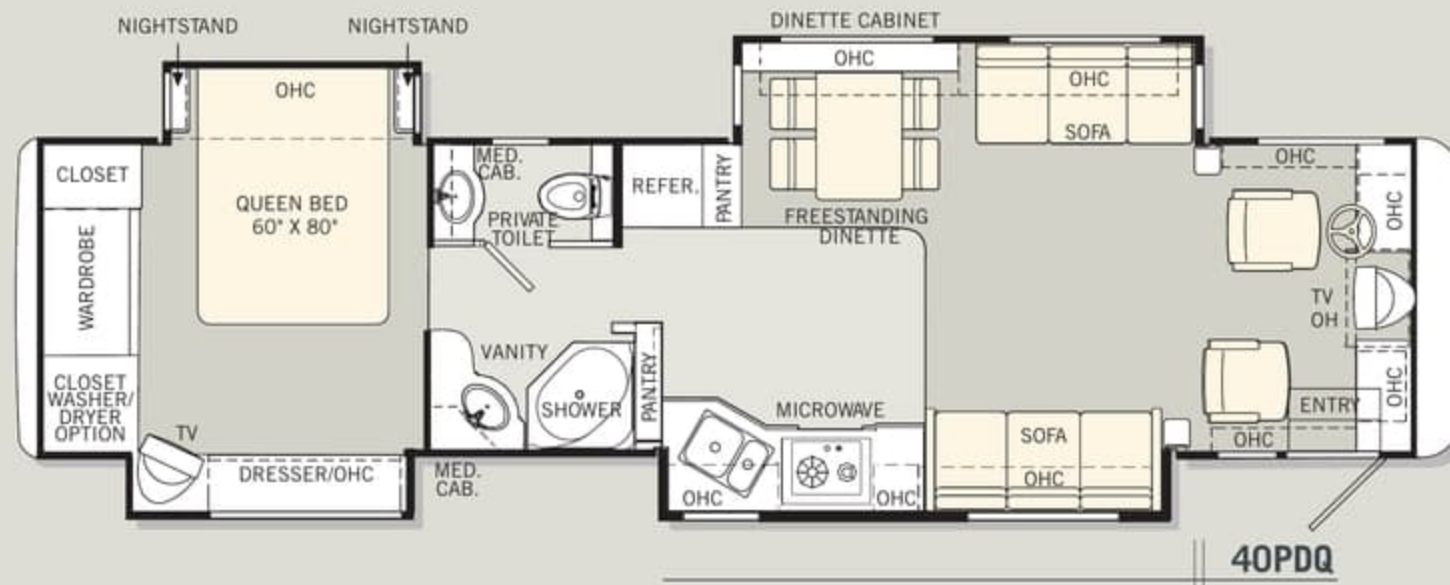
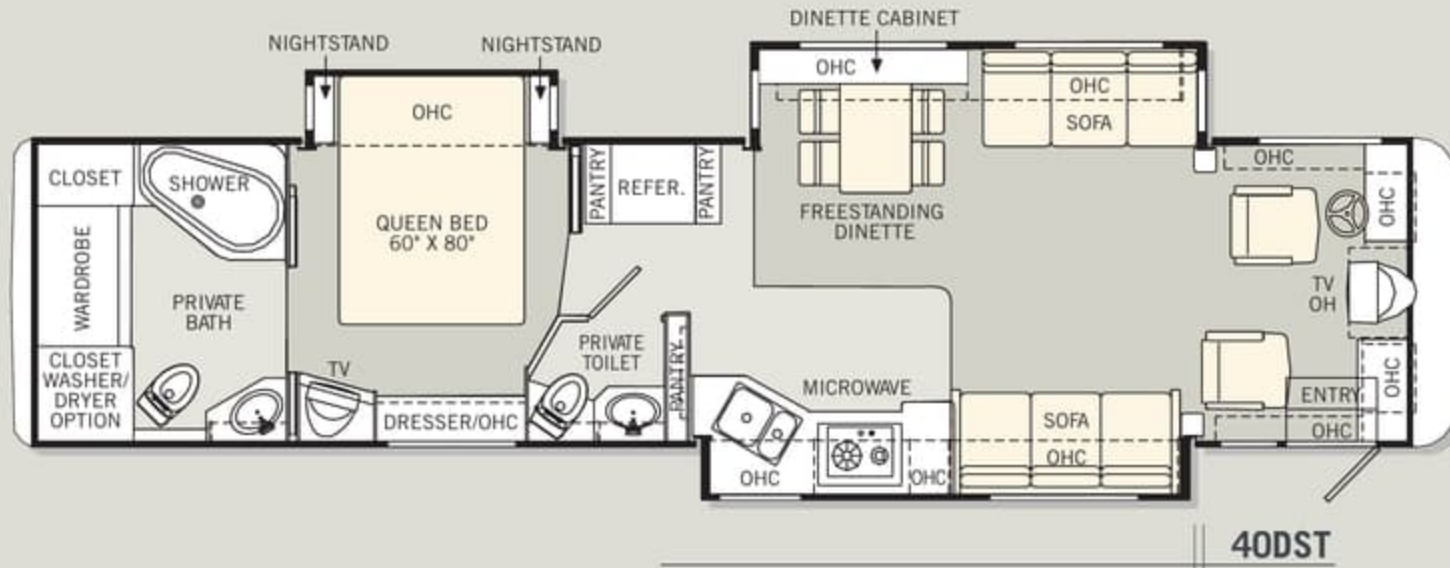
CARPET



Find all the latest product news and updates online:
monacocoach.com



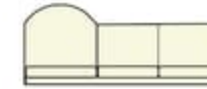
**MONACO FLOORPLANS
CAN BE CUSTOMIZED WITH
MANY POPULAR OPTIONS.**



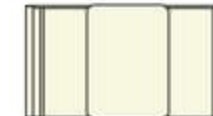
RECLINER
(N/A: 38PST, 40DST, 40PST)



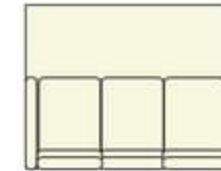
COMPUTER TABLE
(REQUIRES RECLINER,
40PBDD, 40PWD)



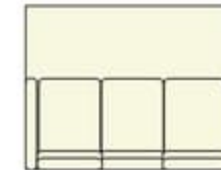
J-LOUNGE
(N/A: 38PBDD)



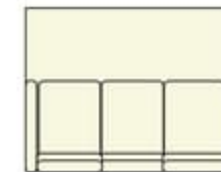
BOOTH DINETTE
(N/A: 40PDT)



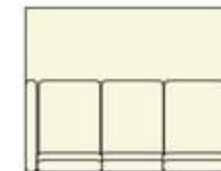
ELECTRIC SOFA
(N/A: 36PST)



MAGIC BED SOFA
(N/A: 34PST, 36PST)

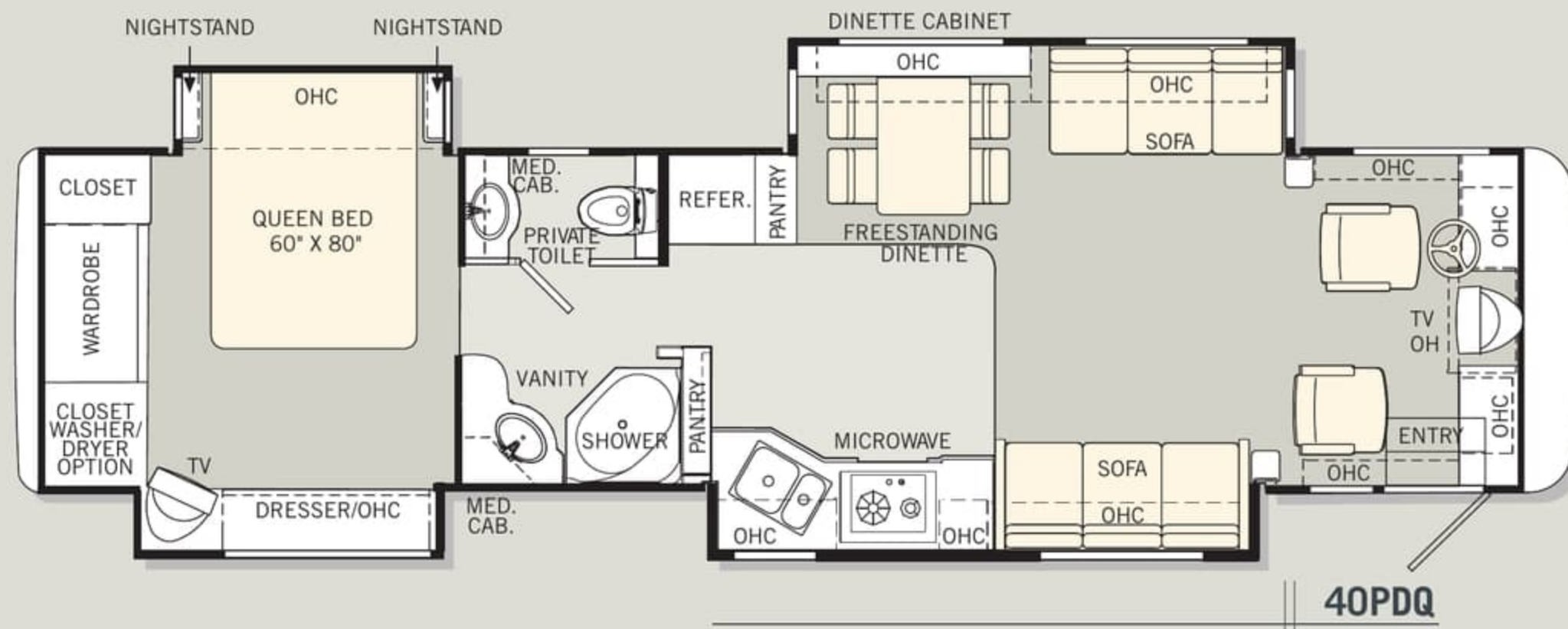
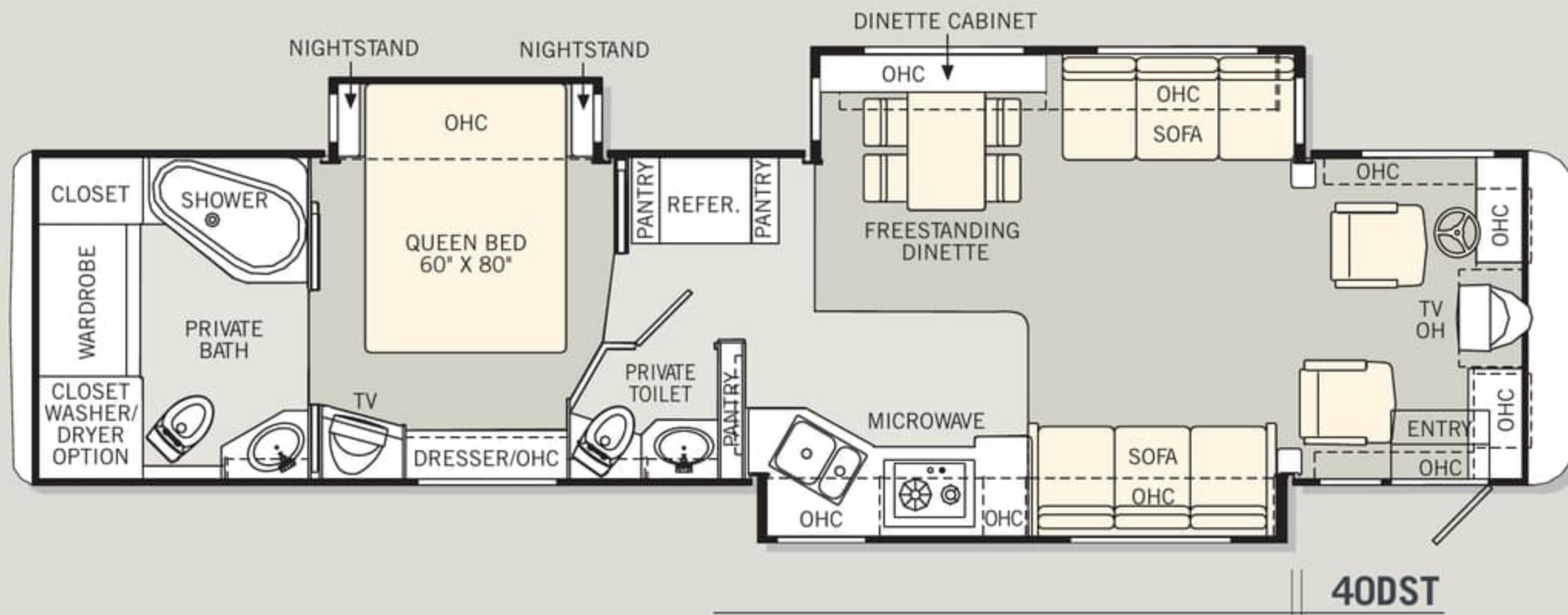


HIDE-A-BED SOFA
(N/A: 36PST)



EASY BED SOFA
(N/A: 36PST, 38PBDD)

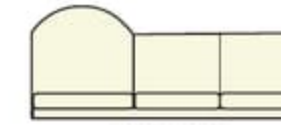
**MONACO FLOORPLANS
CAN BE CUSTOMIZED WITH
MANY POPULAR OPTIONS.**



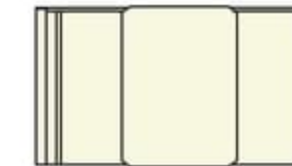
RECLINER
(N/A: 38PST, 40DST, 40PST)



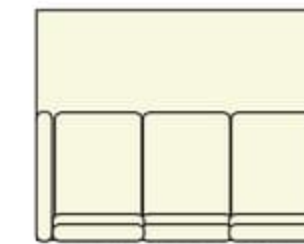
COMPUTER TABLE
(REQUIRES RECLINER,
40PBDD, 40PWD)



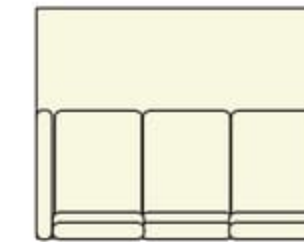
J-LOUNGE
(N/A: 38PBDD)



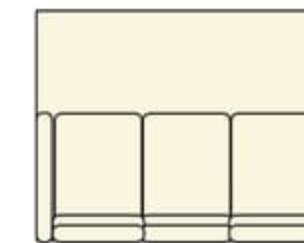
BOOTH DINETTE
(N/A: 40PDT)



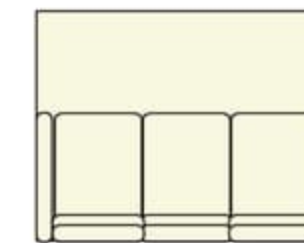
ELECTRIC SOFA
(N/A: 36PST)



MAGIC BED SOFA
(N/A: 34PST, 36PST)



HIDE-A-BED SOFA
(N/A: 36PST)



EASY BED SOFA
(N/A: 36PST, 38PBDD)



Find all the latest product news and updates online:
monacocoach.com

2004 SPECIFICATIONS

WEIGHT RATINGS (LBS.)	36PST	38PBDD	38PST	40PBDD	40PWD	40PDT	40PST	40DST	40PDQ
Gross Vehicle	33,000	33,000	33,000	33,000	33,000	33,000	33,000	33,000	33,000
Gross Combined	43,000	43,000	43,000	43,000	43,000	43,000	43,000	43,000	43,000
Front Gross Axle	13,000	13,000	13,000	13,000	13,000	13,000	13,000	13,000	13,000
Rear Gross Axle	20,000	20,000	20,000	20,000	20,000	20,000	20,000	20,000	20,000
MEASUREMENTS									
Wheelbase	216"	242"	242"	256"	256"	256"	256"	256"	256"
Overall Length	36' 6"	38' 9"	38' 9"	39' 11"	39' 11"	39' 11"	39' 11"	39' 11"	39' 11"
Overall Height (with A/C)	12'	12'	12'	12'	12'	12'	12'	12'	12'
Interior Height	78"	78"	78"	78"	78"	78"	78"	78"	78"
Interior Width	96"	96"	96"	96"	96"	96"	96"	96"	96"
Exterior Width	100 1/2"	100 1/2"	100 1/2"	100 1/2"	100 1/2"	100 1/2"	100 1/2"	100 1/2"	100 1/2"
TANK CAPACITY (GAL.)									
All tank capacities are estimated based upon calculations provided by the tank manufacturers and represent approximate capacities. The actual "usable capacity" may be greater or less than the estimated capacities based upon fabrication and installation of the tanks.									
Water Heater	10	10	10	10	10	10	10	10	10
Gray Tank	60	60	60	60	60	60	60	60	60
Black Tank	39	39	39	39	39	39	39	39	39
Fresh Tank	95	95	95	95	95	95	95	95	95
LP Tank ¹	38	38	38	38	38	38	38	38	38
Fuel Tank	100	100	100	100	100	100	100	100	100

¹ Actual filled LP capacity is 80% of listing due to safety shut-off required on tank.

Due to the large variety of options and floorplan arrangements available to our customers, actual weights for each unit can differ significantly. Monaco Coach provides a weight sticker on each unit we produce which includes that unit's tank capacities and approximate weight. Consult your local Monaco Coach dealer for unit availability and further information. Your towed vehicle should be equipped with auxiliary brakes if the weight of the towed load exceeds 1,000 lbs. The information printed in this brochure reflects product design, fabrication, and component parts at the date of printing. The manufacturer reserves the right, at any time, to make changes in product design or material or component specifications as its sole option, without notice. This includes the substitution of components of a different brand or trade name which will result in comparable performance. All information printed in this brochure is subject to change after the date of printing. Some features shown or mentioned in this brochure are optional and may only be available in selected floorplans. Photographs may show props or decorations that are not standard equipment on Monaco Coach models. Monaco Coach, the Monaco logo and its design, are registered trademarks. All other products and company names are trademarks and/or registered trademarks of their respective holders. While the color of the motorhome's exterior and the interior fabrics depicted in this sales brochure are fair and reasonable depictions, the colors depicted may not be an exact match of the actual colors because of the variances in photo-processing and variances caused by inserting the photographs within the sales brochure. Due to product improvements, changes during the model year and/or transcription errors that may occur, information represented within this brochure may not be accurate at the time of your purchase. If certain information is significant to your purchasing decision, please confirm the information with your dealer prior to submitting your order.



Find all the latest product news and updates online:
monacocoach.com

2004 SPECIFICATIONS

WEIGHT RATINGS (LBS.)	36PST	38PBDD	38PST	40PBDD	40PWD	40PDT	40PST	40DST	40PDQ
Gross Vehicle	33,000	33,000	33,000	33,000	33,000	33,000	33,000	33,000	33,000
Gross Combined	43,000	43,000	43,000	43,000	43,000	43,000	43,000	43,000	43,000
Front Gross Axle	13,000	13,000	13,000	13,000	13,000	13,000	13,000	13,000	13,000
Rear Gross Axle	20,000	20,000	20,000	20,000	20,000	20,000	20,000	20,000	20,000
MEASUREMENTS									
Wheelbase	216"	242"	242"	256"	256"	256"	256"	256"	256"
Overall Length	36' 6"	38' 9"	38' 9"	39' 11"	39' 11"	39' 11"	39' 11"	39' 11"	39' 11"
Overall Height (with A/C)	12'	12'	12'	12'	12'	12'	12'	12'	12'
Interior Height	78"	78"	78"	78"	78"	78"	78"	78"	78"
Interior Width	96"	96"	96"	96"	96"	96"	96"	96"	96"
Exterior Width	100 1/2"	100 1/2"	100 1/2"	100 1/2"	100 1/2"	100 1/2"	100 1/2"	100 1/2"	100 1/2"
TANK CAPACITY (GAL.) All tank capacities are estimated based upon calculations provided by the tank manufacturers and represent approximate capacities. The actual "usable capacity" may be greater or less than the estimated capacities based upon fabrication and installation of the tanks.									
Water Heater	10	10	10	10	10	10	10	10	10
Gray Tank	60	60	60	60	60	60	60	60	60
Black Tank	39	39	39	39	39	39	39	39	39
Fresh Tank	95	95	95	95	95	95	95	95	95
LP Tank ¹	38	38	38	38	38	38	38	38	38
Fuel Tank	100	100	100	100	100	100	100	100	100

¹ Actual filled LP capacity is 80% of listing due to safety shut-off required on tank.

Due to the large variety of options and floorplan arrangements available to our customers, actual weights for each unit can differ significantly. Monaco Coach provides a weight sticker on each unit we produce which includes that unit's tank capacities and approximate weight. Consult your local Monaco Coach dealer for unit availability and further information. Your towed vehicle should be equipped with auxiliary brakes if the weight of the towed load exceeds 1,000 lbs. The information printed in this brochure reflects product design, fabrication, and component parts at the date of printing. The manufacturer reserves the right, at any time, to make changes in product design or material or component specifications as its sole option, without notice. This includes the substitution of components of a different brand or trade name which will result in comparable performance. All information printed in this brochure is subject to change after the date of printing. Some features shown or mentioned in this brochure are optional and may only be available in selected floorplans. Photographs may show props or decorations that are not standard equipment on Monaco Coach models. Monaco Coach, the Monaco logo and its design, are registered trademarks. All other products and company names are trademarks and/or registered trademarks of their respective holders. While the color of the motorhome's exterior and the interior fabrics depicted in this sales brochure are fair and reasonable depictions, the colors depicted may not be an exact match of the actual colors because of the variances in photo-processing and variances caused by inserting the photographs within the sales brochure. Due to product improvements, changes during the model year and/or transcription errors that may occur, information represented within this brochure may not be accurate at the time of your purchase. If certain information is significant to your purchasing decision, please confirm the information with your dealer prior to submitting your order.

2004 STANDARDS AND OPTIONS

BODY CONSTRUCTION

Aluminum Superstructure
Steel Cage Cockpit Construction
Seamless One Piece Molded Crowned
Fiberglass Roof
Laminated Gel Coat Fiberglass
Exterior Walls

Front and Rear Molded Fiberglass
Caps with Integrated Bumpers
Laminated Structurwood™ Flooring
with Aluminum Framing
Power Step Well Cover (N/A: 40PDT)
Foam Insulated Underbelly with
Luaun Backer

Chrome Power Heated Remote
Exterior Mirrors
Baggage Doors with Integrated Single
Handle Latches
Wheel Mud Flaps
Deluxe Full Body Paint
Entry Step Storage
Rear Ladder

OPTIONS

3M® Film Front Mask
Full Length "Monaco" Mud Flap
Storage Bay Slide-Out Tray
(Pass-Through)

COCKPIT

Fiberglass Automotive Dash
with Burl Instrumentation Panel
Aladdin Video Coach System
CD Player/Radio with Six Speakers
Power Sunvisors
Color Rear Vision System with Audio
Intermittent Windshield Wipers
Audible Turn Signals

Lighted VIP Smartwheel® with
Controls for Windshield Wipers,
ICC and Cruise Control
Power Steering
Dual Roof Mounted Air Horns
Cup Holder
Leather Faced Pilot and Co-Pilot
Seats with Six-Way Power Pilot Seat
Carpet Driver and Passenger
Floor Mats

Adjustable Accelerator
and Brake Pedals
CB Prep with Antenna

OPTIONS

Six-Way Power Co-Pilot Seat
Six-Way Power Co-Pilot Seat
with Power Footrest
Extra-Wide Six-Way Power Co-Pilot
Seat with Power Footrest

CB Radio
AM/FM Stereo Cassette (Deletes CD)
(N/A with Sirius Option)
Ten-Disc CD Changer
Sirius Satellite Radio System
(Requires Subscription)
OnStar® Mobile Assistance
Dash Fans
Pilot and Co-Pilot Pull Down Shades

APPLIANCES AND ACCESSORIES

Double-Door Refrigerator
with Raised Panel Doors
Recessed High-Output Cooktop with
Two Burners and Flush Mount Cover
Spacesaver Convection Microwave
with Touch Control
25-Inch Stereo Color TV
with Remote in Living Area
Living Area Stereo TV Wired through
Ceiling Speakers

19-Inch Stereo Color TV
with Remote in Bedroom
TV Antenna and Booster
Stereo VCR with Video Switching Box
Cable TV Hook-Up
and Telephone Jacks
Digital Satellite System Prep
Washer/Dryer Prep

OPTIONS

Double-Door Refrigerator
with Ice Maker
Four-Door Refrigerator with Ice Maker
High-Output 3-Burner Range
with Oven
Combination Washer/Dryer
Home Theater System
with DVD Player

DVD Player
Fully Automatic Digital
Satellite System
Forced Option Flat Screen TV
Upgrade in Livingroom and Bedroom



2004 STANDARDS AND OPTIONS

BODY CONSTRUCTION

Aluminum Superstructure
Steel Cage Cockpit Construction
Seamless One Piece Molded Crowned
Fiberglass Roof
Laminated Gel Coat Fiberglass
Exterior Walls

Front and Rear Molded Fiberglass
Caps with Integrated Bumpers
Laminated Structurwood™ Flooring
with Aluminum Framing
Power Step Well Cover (N/A: 40PDT)
Foam Insulated Underbelly with
Luaun Backer

Chrome Power Heated Remote
Exterior Mirrors
Baggage Doors with Integrated Single
Handle Latches
Wheel Mud Flaps
Deluxe Full Body Paint
Entry Step Storage
Rear Ladder

OPTIONS

3M® Film Front Mask
Full Length "Monaco" Mud Flap
Storage Bay Slide-Out Tray
(Pass-Through)

COCKPIT

Fiberglass Automotive Dash
with Burl Instrumentation Panel
Aladdin Video Coach System
CD Player/Radio with Six Speakers
Power Sunvisors
Color Rear Vision System with Audio
Intermittent Windshield Wipers
Audible Turn Signals

Lighted VIP Smartwheel® with
Controls for Windshield Wipers,
ICC and Cruise Control
Power Steering
Dual Roof Mounted Air Horns
Cup Holder
Leather Faced Pilot and Co-Pilot
Seats with Six-Way Power Pilot Seat
Carpet Driver and Passenger
Floor Mats

Adjustable Accelerator
and Brake Pedals
CB Prep with Antenna

OPTIONS

Six-Way Power Co-Pilot Seat
Six-Way Power Co-Pilot Seat
with Power Footrest
Extra-Wide Six-Way Power Co-Pilot
Seat with Power Footrest

CB Radio
AM/FM Stereo Cassette (Deletes CD)
(N/A with Sirius Option)
Ten-Disc CD Changer
Sirius Satellite Radio System
(Requires Subscription)
OnStar® Mobile Assistance
Dash Fans
Pilot and Co-Pilot Pull Down Shades

APPLIANCES AND ACCESSORIES

Double-Door Refrigerator
with Raised Panel Doors
Recessed High-Output Cooktop with
Two Burners and Flush Mount Cover
Spacesaver Convection Microwave
with Touch Control
25-Inch Stereo Color TV
with Remote in Living Area
Living Area Stereo TV Wired through
Ceiling Speakers

19-Inch Stereo Color TV
with Remote in Bedroom
TV Antenna and Booster
Stereo VCR with Video Switching Box
Cable TV Hook-Up
and Telephone Jacks
Digital Satellite System Prep
Washer/Dryer Prep

OPTIONS

Double-Door Refrigerator
with Ice Maker
Four-Door Refrigerator with Ice Maker
High-Output 3-Burner Range
with Oven
Combination Washer/Dryer
Home Theater System
with DVD Player

DVD Player
Fully Automatic Digital
Satellite System
Forced Option Flat Screen TV
Upgrade in Livingroom and Bedroom



2004 STANDARDS AND OPTIONS, CONTINUED

INTERIOR

Stained Oak Cabinetry
Solid Wood Square Raised Panel Cabinet Doors
Crown Molding
Low Friction Roller Drawer Guides
Brass Finished Cabinet Hardware
Solid Surface Kitchen Countertop with Stainless Steel Sink and Two Sink Covers

Tip Out Tray under Kitchen Sink
Waste Basket Storage
Four-Compartment Drawer Organizer
Roll-Out Pantry (N/A with Four-Door Refrigerator)
Ceramic Tile Flooring in Kitchen and Bathroom
Padded Vinyl Ceiling
Nylon Carpeting and Pad in Living Area and Bedroom

Pleated Day/Night Shades with Black Outs in Bedroom
Polished Solid Surface Bathroom Countertop with Integrated Sink
Medicine Cabinet with Shelves
Bathroom Mirror
Towel Bars and Rings in Bath Area
Solid Surface Nightstand Tops
Solid Surface Bedroom Dresser Top

Clothes Hamper
Bedspread with Pillows

OPTIONS

Solid Surface Kitchen Sink
Tile at Entry (Std. on Side Entries)
Laminated Plank Flooring in Kitchen and Bath

FURNITURE

Queen Bed
Fabric Easy Bed Sofa with Drawer – Curbside (36PST, 38PST, 40PST, 40DST, 40PDQ)
Fabric Easy Bed Sofa with Drawer – Driver's Side (N/A: 36PST)
Fabric Barrel Chair – Curbside (38PBDD, 40PBDD, 40PWD, 40PDT)
Fabric Barrel Chair – Driver's Side (36PST)

Legless Dinette Table with Two Freestanding Chairs
Two Folding Dinette Chairs

OPTIONS

Fabric Recliner (N/A: 38PST, 40PST, 40DST, 40PDQ)
Leather Faced Recliner (N/A: 38PST, 40PST, 40DST, 40PDQ)

Leather Faced Euro Recliner (N/A: 38PST, 40PST, 40DST, 40PDQ)
Fabric Magic Bed (Driver's Side) (N/A: 36PST)
Leather Faced Magic Bed Sofa (Driver's Side) (N/A: 36PST)
Leather Faced Hide-A-Bed Sofa (Driver's Side) (N/A: 36PST)

Fabric Hide-A-Bed Sofa (N/A: 36PST)
Fabric Electric Sofa (N/A: 36PST)
Leather Faced J-Lounge with Drawer (Curbside) (N/A: 36PST, 38PBDD, 40PWD)
Leather Faced Easy Bed Sofa (Curbside) (N/A: 36PST, 38PBDD)
Computer Table (40PBDD, 40PWD)
Booth Dinette (N/A: 36PST, 40PDT)

HEATING, VENTS, AND AIR CONDITIONING

Dual 13.5M BTU Air Conditioner with Ducted Air, Wall Thermostat and Heat Pumps

Two 25M BTU Electronic Ignition Furnace for Dual Zone Climate Control (40M BTU on 38PBDD, 40PBDD and 40PWD)

Electronic AC/Heat Climate Control System
In-Floor Ducted Heating System
Attic Fan in Kitchen and Bath
12V Wet Bay Heater

OPTIONS

Aqua-Hot® Water and Heating System
Attic Fan with Rain Sensor (Per Location) (Lavatory, Private Bath)

ELECTRICAL SYSTEMS AND LIGHTS

50 Amp 120V Distribution Panel and Power Cord
Onan® 7.5 kW Quiet Diesel Generator
Four 6V Deep Cycle Batteries
Two 12V Heavy Duty Chassis Batteries
Battery Disconnect Switches
2000 Watt Inverter

Porch Light
Side Docking Lights
Pilot and Co-Pilot Map Lights
Power Entry Step with Light
Water Pump Switch
Lights in Outside Storage Compartment
110V Receptacles inside Storage Compartment

Underhood Utility Light
110V/12V/Phone Receptacle in Dash Area
Systems Control Center
Rope Lighting in Kitchen and Bath
Fluorescent Ceiling Lights in Kitchen
Decorative Dining Light
Cosmetic Vanity Lights in Bathroom

Decorative Wall Lights in Bedroom
Decorative Wall Lights in Living Area

OPTIONS

Energy Management System
Solar Panel
Power Cord Reel

2004 STANDARDS AND OPTIONS, CONTINUED

INTERIOR

Stained Oak Cabinetry
Solid Wood Square Raised Panel Cabinet Doors
Crown Molding
Low Friction Roller Drawer Guides
Brass Finished Cabinet Hardware
Solid Surface Kitchen Countertop with Stainless Steel Sink and Two Sink Covers

Tip Out Tray under Kitchen Sink
Waste Basket Storage
Four-Compartment Drawer Organizer
Roll-Out Pantry (N/A with Four-Door Refrigerator)
Ceramic Tile Flooring in Kitchen and Bathroom
Padded Vinyl Ceiling
Nylon Carpeting and Pad in Living Area and Bedroom

Pleated Day/Night Shades with Black Outs in Bedroom
Polished Solid Surface Bathroom Countertop with Integrated Sink
Medicine Cabinet with Shelves
Bathroom Mirror
Towel Bars and Rings in Bath Area
Solid Surface Nightstand Tops
Solid Surface Bedroom Dresser Top

Clothes Hamper
Bedsread with Pillows

OPTIONS

Solid Surface Kitchen Sink
Tile at Entry (Std. on Side Entries)
Laminated Plank Flooring in Kitchen and Bath

FURNITURE

Queen Bed
Fabric Easy Bed Sofa with Drawer – Curbside (36PST, 38PST, 40PST, 40DST, 40PDQ)
Fabric Easy Bed Sofa with Drawer – Driver's Side (N/A: 36PST)
Fabric Barrel Chair – Curbside (38PBDD, 40PBDD, 40PWD, 40PDT)
Fabric Barrel Chair – Driver's Side (36PST)

Legless Dinette Table with Two Freestanding Chairs
Two Folding Dinette Chairs

OPTIONS

Fabric Recliner (N/A: 38PST, 40PST, 40DST, 40PDQ)
Leather Faced Recliner (N/A: 38PST, 40PST, 40DST, 40PDQ)

Leather Faced Euro Recliner (N/A: 38PST, 40PST, 40DST, 40PDQ)
Fabric Magic Bed (Driver's Side) (N/A: 36PST)
Leather Faced Magic Bed Sofa (Driver's Side) (N/A: 36PST)
Leather Faced Hide-A-Bed Sofa (Driver's Side) (N/A: 36PST)

Fabric Hide-A-Bed Sofa (N/A: 36PST)
Fabric Electric Sofa (N/A: 36PST)
Leather Faced J-Lounge with Drawer (Curbside) (N/A: 36PST, 38PBDD, 40PWD)
Leather Faced Easy Bed Sofa (Curbside) (N/A: 36PST, 38PBDD)
Computer Table (40PBDD, 40PWD)
Booth Dinette (N/A: 36PST, 40PDT)

HEATING, VENTS, AND AIR CONDITIONING

Dual 13.5M BTU Air Conditioner with Ducted Air, Wall Thermostat and Heat Pumps

Two 25M BTU Electronic Ignition Furnace for Dual Zone Climate Control (40M BTU on 38PBDD, 40PBDD and 40PWD)

Electronic AC/Heat Climate Control System
In-Floor Ducted Heating System
Attic Fan in Kitchen and Bath
12V Wet Bay Heater

OPTIONS

Aqua-Hot® Water and Heating System
Attic Fan with Rain Sensor (Per Location) (Lavatory, Private Bath)

ELECTRICAL SYSTEMS AND LIGHTS

50 Amp 120V Distribution Panel and Power Cord
Onan® 7.5 kW Quiet Diesel Generator
Four 6V Deep Cycle Batteries
Two 12V Heavy Duty Chassis Batteries
Battery Disconnect Switches
2000 Watt Inverter

Porch Light
Side Docking Lights
Pilot and Co-Pilot Map Lights
Power Entry Step with Light
Water Pump Switch
Lights in Outside Storage Compartment
110V Receptacles inside Storage Compartment

Underhood Utility Light
110V/12V/Phone Receptacle in Dash Area
Systems Control Center
Rope Lighting in Kitchen and Bath
Fluorescent Ceiling Lights in Kitchen
Decorative Dining Light
Cosmetic Vanity Lights in Bathroom

Decorative Wall Lights in Bedroom
Decorative Wall Lights in Living Area

OPTIONS

Energy Management System
Solar Panel
Power Cord Reel

PLUMBING AND LP SYSTEMS

Demand Water System and Water Pump
10-Gallon LP Gas/Electric Water Heater with Electronic Ignition
Winterization Valving System
Gravity and Pressurized Water Fill
Sewer Hose Storage

Pull-Out Kitchen Faucet
Separate Kitchen Faucet for Filtered Water
One-Piece Fiberglass Shower
Glass Shower Door with Brass Frame
Toilet with Sprayer

Insulated Systems Compartment with Easy Access to Hook-Up
Service Bay Faucet

OPTIONS

Power Water Hose Reel
Bath Tub (N/A: 36PST, 38PST, 40PST, 40PDT, 40DST, 40PDQ)

WINDOWS, DOORS, AND AWNINGS

Radius Dual Pane Safety Glass Dark Tinted Slider Windows
Entry Door with Removable Screen
Entry Assist Handle

Tinted Skylight in Bathroom
Patio Awning with Color Coordinated Hardware
Slide-Out Topper Awnings

OPTIONS

Carefree® Automatic Patio Awning
Mirage Automatic Patio Awning

Window Awning
Keyless Entry System

SAFETY

Fire Extinguisher
Deadbolt Lock on Entrance Door

120V GFI Protected Circuit (Kitchen, Bathroom, Exterior)
LP Gas Detector

Smoke Detector
Carbon Monoxide Detector
Egress Window

Integrated Pilot and Co-Pilot Three-Point Seat Belts (Lap and Shoulder)
Third Brake Safety Light

CHASSIS/ENGINE/SUSPENSION

Roadmaster RR8S-Series Chassis
Cummins® ISC 350 HP Diesel Engine with Allison® 3000 MH 6-Speed World Transmission and Electronic Shifter
Torque: 1,050 lbs./ft. Max. Net at 1,424 RPM
Cubic Inch Displacement: 504.5"/8.3L
160 Amp Alternator
Rear Axle Ratio: 4.30:1

Dual Fuel Fill
Radial Tires: 275/70R/22.5
Eight Air Bag Suspension with Eight Gas Shocks
Anti-Lock Braking System with Full Air Brakes (Drum)
Automatic Traction Control
Pac Exhaust Brake
Auto Slack Adjusters
Fuel and Water Separator

Fuel Filter
Rear Side Air Intake
Engine Block Heater
Air Cleaner Restriction Indicator
Hydraulic Leveling System
10,000 Lb. Hitch Receiver* with Six-Point Connector
Undercoating

OPTIONS

Polished Aluminum Wheels
Air Leveling System
Dual Leveling System (Air/Hydraulic)

* Your towed vehicle should be equipped with auxiliary brakes if the weight of the towed load exceeds 1,000 lbs.

PLUMBING AND LP SYSTEMS

Demand Water System and Water Pump
10-Gallon LP Gas/Electric Water Heater with Electronic Ignition
Winterization Valving System
Gravity and Pressurized Water Fill
Sewer Hose Storage

Pull-Out Kitchen Faucet
Separate Kitchen Faucet for Filtered Water
One-Piece Fiberglass Shower
Glass Shower Door with Brass Frame
Toilet with Sprayer

Insulated Systems Compartment with Easy Access to Hook-Up Service Bay Faucet

OPTIONS

Power Water Hose Reel
Bath Tub (N/A: 36PST, 38PST, 40PST, 40PDT, 40DST, 40PDQ)

WINDOWS, DOORS, AND AWNINGS

Radius Dual Pane Safety Glass Dark Tinted Slider Windows
Entry Door with Removable Screen
Entry Assist Handle

Tinted Skylight in Bathroom
Patio Awning with Color Coordinated Hardware
Slide-Out Topper Awnings

OPTIONS

Carefree® Automatic Patio Awning
Mirage Automatic Patio Awning

Window Awning
Keyless Entry System

SAFETY

Fire Extinguisher
Deadbolt Lock on Entrance Door

120V GFI Protected Circuit (Kitchen, Bathroom, Exterior)
LP Gas Detector

Smoke Detector
Carbon Monoxide Detector
Egress Window

Integrated Pilot and Co-Pilot Three-Point Seat Belts (Lap and Shoulder)
Third Brake Safety Light

CHASSIS/ENGINE/SUSPENSION

Roadmaster RR8S-Series Chassis
Cummins® ISC 350 HP Diesel Engine with Allison® 3000 MH 6-Speed World Transmission and Electronic Shifter
Torque: 1,050 lbs./ft. Max. Net at 1,424 RPM
Cubic Inch Displacement: 504.5"/8.3L
160 Amp Alternator
Rear Axle Ratio: 4.30:1

Dual Fuel Fill
Radial Tires: 275/70R/22.5
Eight Air Bag Suspension with Eight Gas Shocks
Anti-Lock Braking System with Full Air Brakes (Drum)
Automatic Traction Control
Pac Exhaust Brake
Auto Slack Adjusters
Fuel and Water Separator

Fuel Filter
Rear Side Air Intake
Engine Block Heater
Air Cleaner Restriction Indicator
Hydraulic Leveling System
10,000 Lb. Hitch Receiver* with Six-Point Connector
Undercoating

OPTIONS

Polished Aluminum Wheels
Air Leveling System
Dual Leveling System (Air/Hydraulic)

* Your towed vehicle should be equipped with auxiliary brakes if the weight of the towed load exceeds 1,000 lbs.

WELCOME TO THE FAMILY.

If you choose to participate in our exclusive clubs and rallies, you'll connect with other Monaco owners from across the country. You'll receive a free one-year membership to a chapter of the Monaco Owners Club, and first-time buyers of the Camelot will receive a free one-year membership to the Family Motor Coaching Association.

*As a Monaco owner, you're entitled to a free subscription to our **LIFESTYLES** magazine, giving you all the latest news on our products, club events and exciting destinations.*



WELCOME TO THE FAMILY.

If you choose to participate in our exclusive clubs and rallies, you'll connect with other Monaco owners from across the country. You'll receive a free one-year membership to a chapter of the Monaco Owners Club, and first-time buyers of the Camelot will receive a free one-year membership to the Family Motor Coaching Association.

*As a Monaco owner, you're entitled to a free subscription to our **LIFESTYLES** magazine, giving you all the latest news on our products, club events and exciting destinations.*





Also, as a new Monaco owner, you're entitled to our comprehensive **OWNER ADVANTAGE PROGRAM**. With this impressive roadside assistance package, Master Certified RVDA Technicians and ASE Certified Technicians are on call 24 hours a day to handle any problems you may experience with your coach. And that's not all. Members of our Owner Advantage Program also receive the following benefits: emergency roadside service, fuel delivery, tire change, battery jump start, lockout service, trip routing and maps, and much more.

You can access **MONACOCOACH.COM** night or day to take advantage of its many features. The site includes factory tours, a dealer locator function and plenty of information on Monaco products and scheduled club events. Plus, through the site, you may contact us directly at any time.



THE FAMILY ADVANTAGE.

When you purchase a coach from Monaco, you become part of an industry-leading family of companies called Monaco Coach Corporation. What does that mean for you? It means you have access to a wider array of benefits. To begin with, your coach is built by a level of expertise that could only be achieved through the teamwork and combined experience of all our companies. Like, for example, such exclusive innovations as the Roadmaster chassis — designed specifically for each individual model of our diesel coaches.

You also get the benefit of our White Glove factory inspection program, for a higher level of quality assurance and added peace of mind. And your dealer will be happy to tell you about our other innovative programs, including our Extended Care service agreements.



Of course, once you're on the road, you'll have access to our nationwide network of more than 350 service facilities, meaning wherever you travel, you're never far from a friend. Ready to roll? In a 2004 Monaco, the strength of our entire family is behind you every mile of the way.



350
and growing | Service
Facilities
Nationwide

WARRANTIES

12 MONTH/24,000 MILE basic limited warranty

5 YEAR/50,000 MILE limited warranty on aluminum or steel frame structure of sidewall, roof, front and rear cap

3 YEAR/36,000 MILE limited warranty on Roadmaster chassis

See owner's manual for complete details.



Also, as a new Monaco owner, you're entitled to our comprehensive **OWNER ADVANTAGE PROGRAM**. With this impressive roadside assistance package, Master Certified RVDA Technicians and ASE Certified Technicians are on call 24 hours a day to handle any problems you may experience with your coach. And that's not all. Members of our Owner Advantage Program also receive the following benefits: emergency roadside service, fuel delivery, tire change, battery jump start, lockout service, trip routing and maps, and much more.

You can access **MONACOCOACH.COM** night or day to take advantage of its many features. The site includes factory tours, a dealer locator function and plenty of information on Monaco products and scheduled club events. Plus, through the site, you may contact us directly at any time.



THE FAMILY ADVANTAGE.

When you purchase a coach from Monaco, you become part of an industry-leading family of companies called Monaco Coach Corporation. What does that mean for you? It means you have access to a wider array of benefits. To begin with, your coach is built by a level of expertise that could only be achieved through the teamwork and combined experience of all our companies. Like, for example, such exclusive innovations as the Roadmaster chassis — designed specifically for each individual model of our diesel coaches.

You also get the benefit of our White Glove factory inspection program, for a higher level of quality assurance and added peace of mind. And your dealer will be happy to tell you about our other innovative programs, including our Extended Care service agreements.



Of course, once you're on the road, you'll have access to our nationwide network of more than 350 service facilities, meaning wherever you travel, you're never far from a friend. Ready to roll? In a 2004 Monaco, the strength of our entire family is behind you every mile of the way.



350
and growing | Service
Facilities
Nationwide

WARRANTIES

12 MONTH/24,000 MILE basic limited warranty

5 YEAR/50,000 MILE limited warranty on aluminum or steel frame structure of sidewall, roof, front and rear cap

3 YEAR/36,000 MILE limited warranty on Roadmaster chassis

See owner's manual for complete details.

THE SHINE OF SUCCESS.

It's like a milestone you breeze past without noticing. A turning point where everything changes. Where suddenly, the things you've achieved outnumber the things you've dreamed of. In short, you've arrived. And now that you're here, you can fully appreciate the quality experience of a Monaco coach. As a perfectionist, it's a level of performance and luxury that you recognize instantly. And as a freedom-lover, it's your gateway to endless possibilities. This is the starting point for a whole new journey. Because once you catch a glimpse of yourself in the mirror of a new Monaco, you'll see once and for all just how far you've come.



91320 Industrial Way, Coburg, OR 97408 800 634-0855 606 Nelson's Pkwy., Wakarusa, IN 46573 800 650-7337

Monaco Coach Corporation is traded on the NYSE under the listing MNC. 0603 NPN:BROMCAM

THE SHINE OF SUCCESS.

It's like a milestone you breeze past without noticing. A turning point where everything changes. Where suddenly, the things you've achieved outnumber the things you've dreamed of. In short, you've arrived. And now that you're here, you can fully appreciate the quality experience of a Monaco coach. As a perfectionist, it's a level of performance and luxury that you recognize instantly. And as a freedom-lover, it's your gateway to endless possibilities. This is the starting point for a whole new journey. Because once you catch a glimpse of yourself in the mirror of a new Monaco, you'll see once and for all just how far you've come.



91320 Industrial Way, Coburg, OR 97408 800 634-0855 606 Nelson's Pkwy., Wakarusa, IN 46573 800 650-7337

Monaco Coach Corporation is traded on the NYSE under the listing MNC. 0603 NPN:BROMCAM