



04 KNIGHT by Monaco

04 KNIGHT
DECLARE YOUR INDEPENDENCE.





04 KNIGHT by Monaco

04 KNIGHT
DECLARE YOUR INDEPENDENCE.



LUXURY. ADVENTURE. AND A PRICE TAG YOU CAN LIVE WITH.

Looking for a luxury diesel motorcoach with a spirit of adventure? You've found it — the 2004 Knight by Monaco. Each well-considered detail contributes to the legendary quality that puts a Monaco coach on a higher level. For you, that means an RV experience like no other, at a truly remarkable value. This year, you'll choose from some of the most innovative floorplans in the industry, including an amazing new quad slide-out model. And you'll help create the coach of your dreams, with your choice of four beautiful decors and three striking wood colors. Other interior highlights include crown molding, decorative wallboard, hardwood slide-out fascia trim with metal panel accent inserts, and new carpeting with Scotchgard™ stain release pad.



① Behind the **TILT/TELESCOPIC WHEEL WITH POWER STEERING**, you'll find a beautiful **FIBERGLASS DASH** and **INSTRUMENTATION PANEL** with all the controls you need for safety and convenience. Like the black and white **REAR VISION SYSTEM** with audio, **ADJUSTABLE BRAKE AND ACCELERATOR PANELS**. You can also choose from some excellent options, including **PULL-DOWN SHADES AND POWER SUNVISOR** to make driving even more enjoyable.

② The **COCKPIT** features the luxurious comfort of **SOFT TOUCH VINYL SEATS** with **SIX-WAY POWER CONTROLS** for the pilot, and optional six-way power controls and a **POWER FOOTREST** for the co-pilot. You'll also find a **24" FLAT SCREEN STEREO TV** that's wired through the ceiling speakers for superior audio. Some entertainment options include a **HOME THEATER SYSTEM** with **DVD PLAYER** and a fully automatic **DIGITAL SATELLITE SYSTEM**.



③ *The Knight **LIVING AREA**, 38PDQ, in Ironwood with Regal Cherry woodwork.*

LUXURY. ADVENTURE. AND A PRICE TAG YOU CAN LIVE WITH.

Looking for a luxury diesel motorcoach with a spirit of adventure? You've found it — the 2004 Knight by Monaco. Each well-considered detail contributes to the legendary quality that puts a Monaco coach on a higher level. For you, that means an RV experience like no other, at a truly remarkable value. This year, you'll choose from some of the most innovative floorplans in the industry, including an amazing new quad slide-out model. And you'll help create the coach of your dreams, with your choice of four beautiful decors and three striking wood colors. Other interior highlights include crown molding, decorative wallboard, hardwood slide-out fascia trim with metal panel accent inserts, and new carpeting with Scotchgard™ stain release pad.



① Behind the **TILT/TELESCOPIC WHEEL WITH POWER STEERING**, you'll find a beautiful **FIBERGLASS DASH** and **INSTRUMENTATION PANEL** with all the controls you need for safety and convenience. Like the black and white **REAR VISION SYSTEM** with audio, **ADJUSTABLE BRAKE AND ACCELERATOR PANELS**. You can also choose from some excellent options, including **PULL-DOWN SHADES AND POWER SUNVISOR** to make driving even more enjoyable.

② The **COCKPIT** features the luxurious comfort of **SOFT TOUCH VINYL SEATS** with **SIX-WAY POWER CONTROLS** for the pilot, and optional six-way power controls and a **POWER FOOTREST** for the co-pilot. You'll also find a **24" FLAT SCREEN STEREO TV** that's wired through the ceiling speakers for superior audio. Some entertainment options include a **HOME THEATER SYSTEM** with **DVD PLAYER** and a fully automatic **DIGITAL SATELLITE SYSTEM**.

③ *The Knight **LIVING AREA**, 38PDQ, in Ironwood with Regal Cherry woodwork.*





3



3





1



THE KNIGHT KITCHEN.

The coach's kitchen area is a chef's dream come true. It's highlighted by beautiful Corian® countertops and backsplash, a stainless steel sink with single-lever chrome faucet and a separate faucet for filtered water, and beautiful laminated tile flooring. Convenient storage spaces include a pantry with adjustable shelves, sink cover storage, overhead cabinets with adjustable shelf, and a silverware drawer with organizer. Recessed countertop extensions offer expanded workspace, and the full complement of appliances includes a versatile convection microwave and a high-output three-burner cooktop or optional range with oven.



① *The Knight **LIVING AREA/KITCHEN**, 38PST, in Urban Escape with Regal Cherry woodwork.*

This stylish **FREESTANDING DINETTE** features a **LAMINATED TOP WITH CORIAN® EDGE** and includes a **WALL CABINET**, **TWO FREESTANDING CHAIRS** and **TWO FOLDING CHAIRS**. It comes standard on the 36PST, and is optional on all other floorplans.

② The large **DOUBLE-DOOR REFRIGERATOR** adds to the contemporary styling with metal panel accent inserts. A refrigerator with ice maker and a four-door model are available as options.

③ The **THREE-BURNER COOKTOP** and **CONVECTION SPACESAVER MICROWAVE** make meals a snap. As an option, a cooktop with oven is available. And the **CORIAN® COUNTERTOPS** and **BACKSPLASH** are as easy to keep clean as they are beautiful.



THE KNIGHT KITCHEN.

The coach's kitchen area is a chef's dream come true. It's highlighted by beautiful Corian® countertops and backsplash, a stainless steel sink with single-lever chrome faucet and a separate faucet for filtered water, and beautiful laminated tile flooring. Convenient storage spaces include a pantry with adjustable shelves, sink cover storage, overhead cabinets with adjustable shelf, and a silverware drawer with organizer. Recessed countertop extensions offer expanded workspace, and the full complement of appliances includes a versatile convection microwave and a high-output three-burner cooktop or optional range with oven.



① *The Knight **LIVING AREA/KITCHEN**, 38PST, in Urban Escape with Regal Cherry woodwork.*

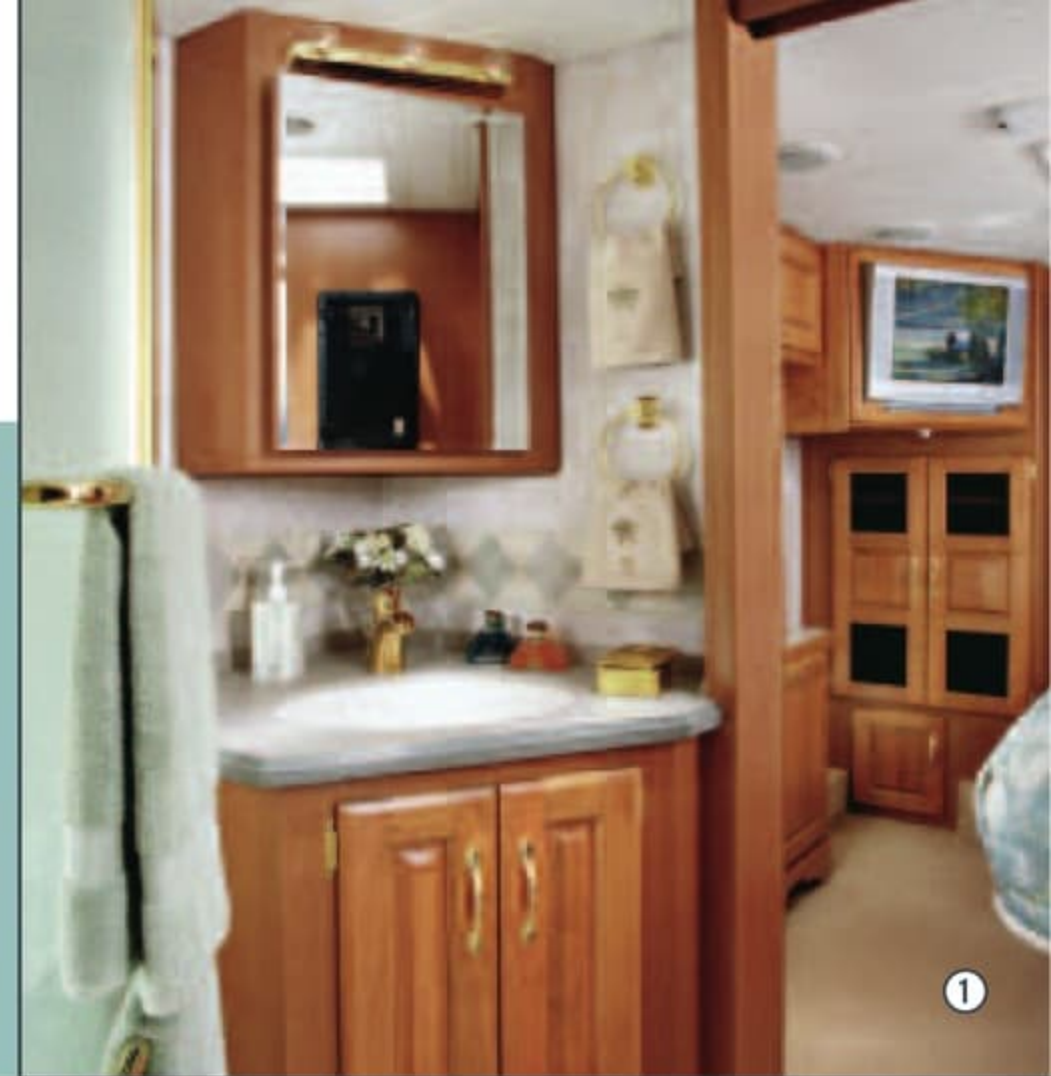
This stylish **FREESTANDING DINETTE** features a **LAMINATED TOP WITH CORIAN® EDGE** and includes a **WALL CABINET**, **TWO FREESTANDING CHAIRS** and **TWO FOLDING CHAIRS**. It comes standard on the 36PST, and is optional on all other floorplans.

② The large **DOUBLE-DOOR REFRIGERATOR** adds to the contemporary styling with metal panel accent inserts. A refrigerator with ice maker and a four-door model are available as options.

③ The **THREE-BURNER COOKTOP** and **CONVECTION SPACESAVER MICROWAVE** make meals a snap. As an option, a cooktop with oven is available. And the **CORIAN® COUNTERTOPS** and **BACKSPLASH** are as easy to keep clean as they are beautiful.

A RESTING PLACE FOR THE ADVENTURE THAT LIES AHEAD.

The Knight features cozy private quarters with plenty of space for all your essentials. You'll appreciate both the oversized rear wardrobe with mirrored door and the dresser with built-in hamper and decorative furniture leg. Other stylish details include a reversible bedspread, pillow shams, and brass finished gem lights over the bed with his/her switches. You'll also enjoy the 20" flat screen TV with remote control, and this year, the optional VCR or DVD player is wired to both TV locations.



① The private bathroom features many convenient details, including a **MEDICINE CABINET WITH ADJUSTABLE SHELVES** (not available on angled cabinets), **TOWEL BAR/RINGS**, and a **CORIAN® COUNTERTOP WITH INTEGRATED SINK** and **BRASS FINISH SINGLE-HANDLE FAUCET**. A **ONE-PIECE FIBERGLASS SHOWER WITH BRASS FRAME** and **DECORATIVE GLASS DOOR** is standard, or you have the option of a bathtub.

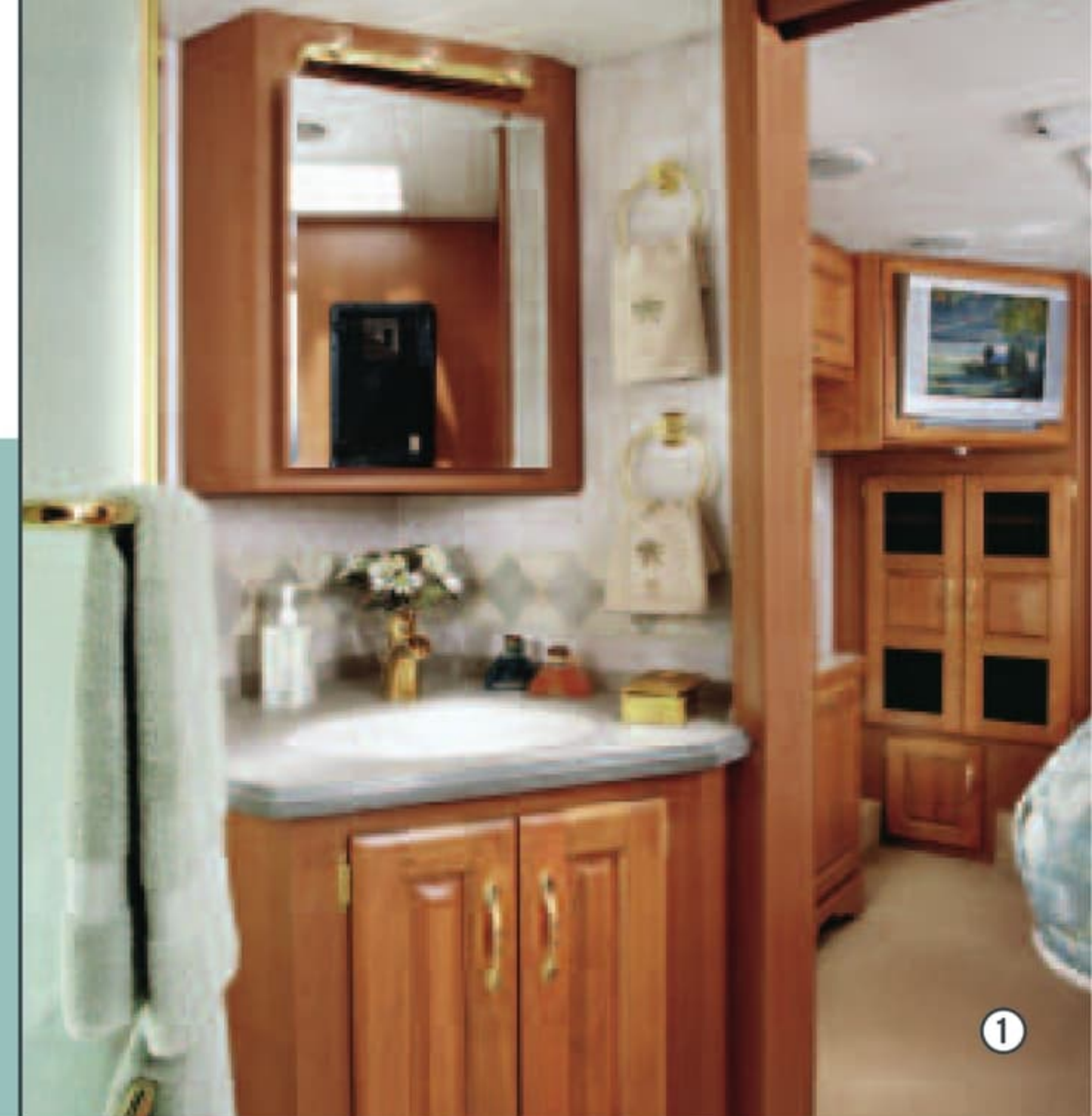
② Stylishly convenient, the spacious dresser with **DECORATIVE FURNITURE LEG** has a handy **BUILT-IN HAMPER** that's versatile enough to be used for quick pick-ups or as an additional storage area.

③ *The Knight **BEDROOM**, 38PST, in Urban Escape with Regal Cherry woodwork.*



A RESTING PLACE FOR THE ADVENTURE THAT LIES AHEAD.

The Knight features cozy private quarters with plenty of space for all your essentials. You'll appreciate both the oversized rear wardrobe with mirrored door and the dresser with built-in hamper and decorative furniture leg. Other stylish details include a reversible bedspread, pillow shams, and brass finished gem lights over the bed with his/her switches. You'll also enjoy the 20" flat screen TV with remote control, and this year, the optional VCR or DVD player is wired to both TV locations.



① The private bathroom features many convenient details, including a **MEDICINE CABINET WITH ADJUSTABLE SHELVES** (not available on angled cabinets), **TOWEL BAR/RINGS**, and a **CORIAN® COUNTERTOP WITH INTEGRATED SINK** and **BRASS FINISH SINGLE-HANDLE FAUCET**. A **ONE-PIECE FIBERGLASS SHOWER WITH BRASS FRAME** and **DECORATIVE GLASS DOOR** is standard, or you have the option of a bathtub.

② Stylishly convenient, the spacious dresser with **DECORATIVE FURNITURE LEG** has a handy **BUILT-IN HAMPER** that's versatile enough to be used for quick pick-ups or as an additional storage area.

③ *The Knight **BEDROOM**, 38PST, in Urban Escape with Regal Cherry woodwork.*





3



3

IT'S ALL RIDING ON A ROADMASTER.



Want to know the secret to the best ride and handling in the industry? A custom-built chassis by Roadmaster. You see, Roadmaster chassis are designed to the exacting specifications of each and every model of our diesel coaches. That means you'll never find this year's coach on last year's chassis. And you'll always know you're riding on a chassis that's designed exclusively for a luxury diesel motorhome. So take a moment to learn about a few of the Roadmaster's impressive features. Because only this kind of highly synchronized teamwork can give you this level of performance.



ROADMASTER RAISED RAIL RR4R CHASSIS

- Stacked aluminum charged air cooler, aluminum radiator, and external aluminum transmission cooler for optimum heat transfer and cooling.
- Gross combined weight rating of 42,000 lbs. for a solidly built coach.
- Allison® 3000 MH 6-Speed World Transmission and electronic shifter for smooth, even shifting and added horsepower and torque.
- Unique 5-degree rear axle tilt for perfect alignment of engine, transmission and rear end to minimize drive train stress and noise.
- Air suspension system with four air bags and gas shock absorbers for superb ride and handling.
- Active suspension control system providing superior front-to-rear balance and sway reduction.
- Manual hydraulic leveling system (3-point leveling system, 32,000 lbs. rated) to adjust coach level for passengers' ease in entry and exit.
- Heavy duty steel undercarriage and firewall provide strength and durability.
- Electronically controlled exhaust braking system, with chrome exhaust tip for engine, providing smooth braking.
- Four-wheel anti-lock disc braking system (ABS) with full air brakes (drum).
- Fuel tank capacity of 90 gallons and dual fuel fill for your driving and fill-up convenience.
- Turbo air intake elevated to roof line on rear cap with upgraded metal intake tubes.
- Radial tires (275/70R/22.5), to let you drive with peace of mind.
- A 10,000 lb. newly designed hitch receiver with connector.

IT'S ALL RIDING ON A ROADMASTER.



Want to know the secret to the best ride and handling in the industry? A custom-built chassis by Roadmaster. You see, Roadmaster chassis are designed to the exacting specifications of each and every model of our diesel coaches. That means you'll never find this year's coach on last year's chassis. And you'll always know you're riding on a chassis that's designed exclusively for a luxury diesel motorhome. So take a moment to learn about a few of the Roadmaster's impressive features. Because only this kind of highly synchronized teamwork can give you this level of performance.



ROADMASTER RAISED RAIL RR4R CHASSIS

- Stacked aluminum charged air cooler, aluminum radiator, and external aluminum transmission cooler for optimum heat transfer and cooling.
- Gross combined weight rating of 42,000 lbs. for a solidly built coach.
- Allison® 3000 MH 6-Speed World Transmission and electronic shifter for smooth, even shifting and added horsepower and torque.
- Unique 5-degree rear axle tilt for perfect alignment of engine, transmission and rear end to minimize drive train stress and noise.
- Air suspension system with four air bags and gas shock absorbers for superb ride and handling.
- Active suspension control system providing superior front-to-rear balance and sway reduction.
- Manual hydraulic leveling system (3-point leveling system, 32,000 lbs. rated) to adjust coach level for passengers' ease in entry and exit.
- Heavy duty steel undercarriage and firewall provide strength and durability.
- Electronically controlled exhaust braking system, with chrome exhaust tip for engine, providing smooth braking.
- Four-wheel anti-lock disc braking system (ABS) with full air brakes (drum).
- Fuel tank capacity of 90 gallons and dual fuel fill for your driving and fill-up convenience.
- Turbo air intake elevated to roof line on rear cap with upgraded metal intake tubes.
- Radial tires (275/70R/22.5), to let you drive with peace of mind.
- A 10,000 lb. newly designed hitch receiver with connector.

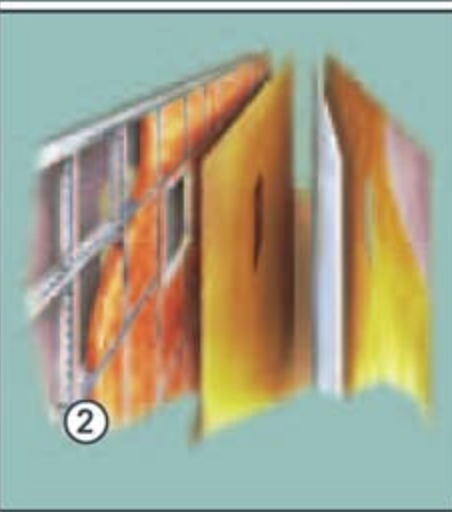
ROOF LAYERS: (TOP TO BOTTOM)

- a. Peaked aluminum roof
- b. Luaun backing
- c. Thick, tapered bead foam insulation
- d. Aluminum double I-beam superstructure filled with fiberglass insulation
- e. Vapor barrier
- f. Structure foam: thermal insulative barrier
- g. 1/2" bead foam insulation
- h. Foam padding for extra insulation
- i. Padded vinyl ceiling



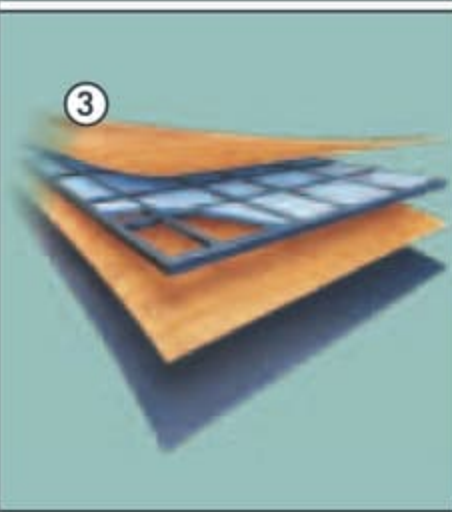
WALL LAYERS: (LEFT TO RIGHT)

- a. High-gloss gel coat fiberglass with luaun backing
- b. Interlocking C-Channel filled with 1-1/2" fiberglass insulation glued in place so it doesn't sag or leave spaces uninsulated
- c. Vapor barrier
- d. Bead foam adds comfort, saves energy and provides a thermal insulative barrier
- e. Interior paneling



FLOOR CONSTRUCTION: (BOTTOM TO TOP)

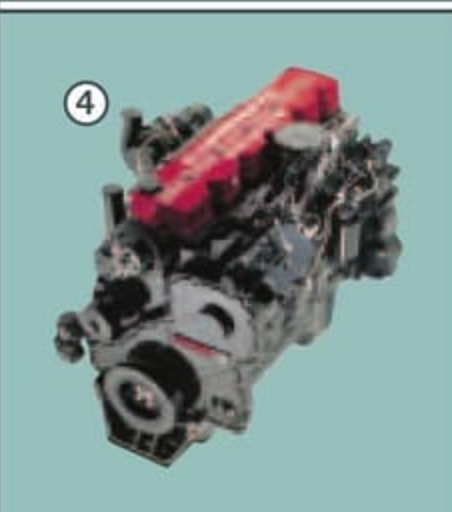
- a. Darco
- b. Luaun
- c. Blue foam
- d. 1-1/2" steel tube
- e. 5/8" Structurwood™



A powerful **CUMMINS® ISC 330 ENGINE** with **ALLISON® 3000 MH 6-SPEED ELECTRONIC TRANSMISSION** puts you in command of any road you choose.

The **WET BAY** is easy to access and gives you the convenience of a hot and cold water shower.

Our **STREAMLINED BAGGAGE DOORS** include secure, easy-to-open integrated **SINGLE-HANDLE LATCHES**. And you'll appreciate the large **PASS-THROUGH STORAGE COMPARTMENTS** with the option of a **SLIDE-OUT TRAY**.



Our exclusive **SLIDE-OUT** design is the strongest and most reliable you'll find anywhere. It features our exclusive multi-layer construction to give you maximum insulation and to reduce the chance of warping, twisting or shifting.

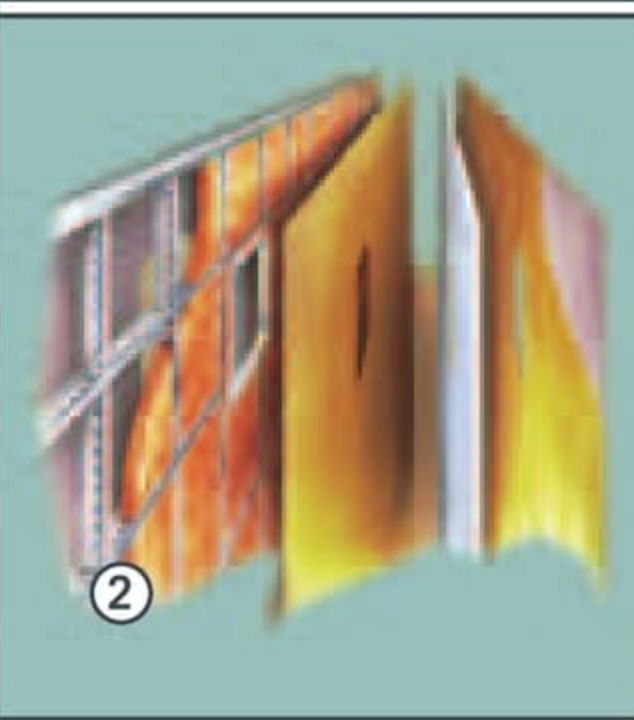
ROOF LAYERS: (TOP TO BOTTOM)

- a. Peaked aluminum roof
- b. Luaun backing
- c. Thick, tapered bead foam insulation
- d. Aluminum double I-beam superstructure filled with fiberglass insulation
- e. Vapor barrier
- f. Structure foam: thermal insulative barrier
- g. 1/2" bead foam insulation
- h. Foam padding for extra insulation
- i. Padded vinyl ceiling



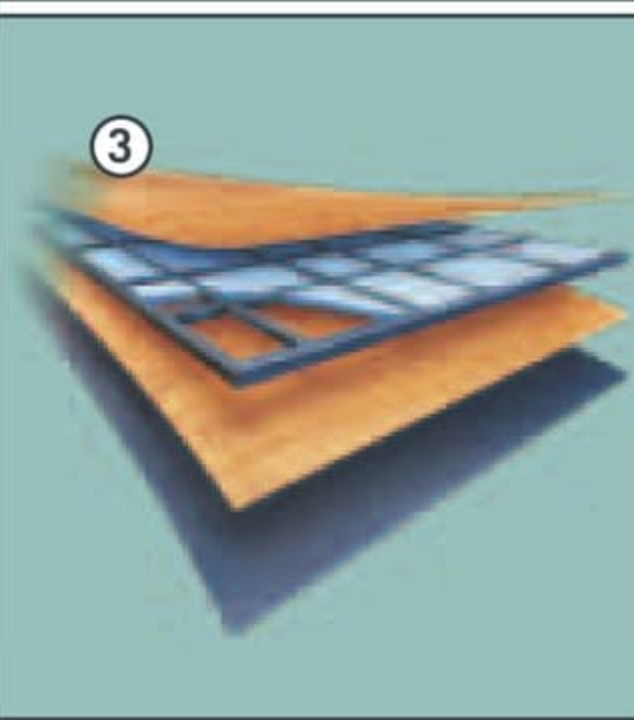
WALL LAYERS: (LEFT TO RIGHT)

- a. High-gloss gel coat fiberglass with luaun backing
- b. Interlocking C-Channel filled with 1-1/2" fiberglass insulation glued in place so it doesn't sag or leave spaces uninsulated
- c. Vapor barrier
- d. Bead foam adds comfort, saves energy and provides a thermal insulative barrier
- e. Interior paneling



FLOOR CONSTRUCTION: (BOTTOM TO TOP)

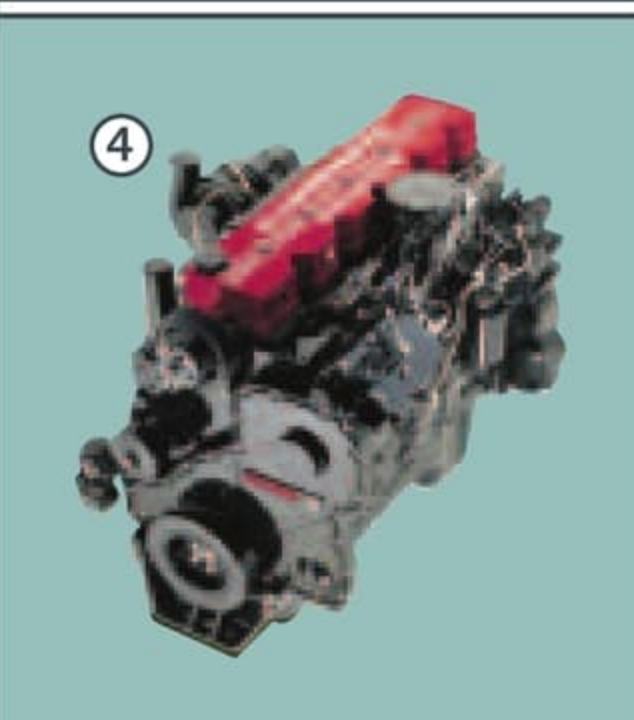
- a. Darco
- b. Luaun
- c. Blue foam
- d. 1-1/2" steel tube
- e. 5/8" Structurwood™



A powerful **CUMMINS® ISC 330 ENGINE** with **ALLISON® 3000 MH 6-SPEED ELECTRONIC TRANSMISSION** puts you in command of any road you choose.

The **WET BAY** is easy to access and gives you the convenience of a hot and cold water shower.

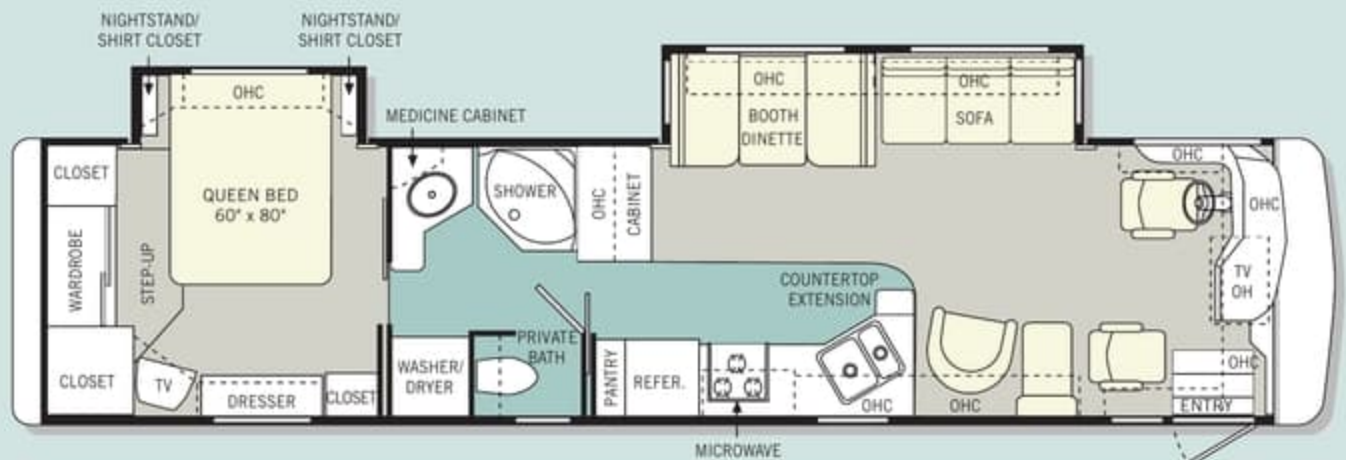
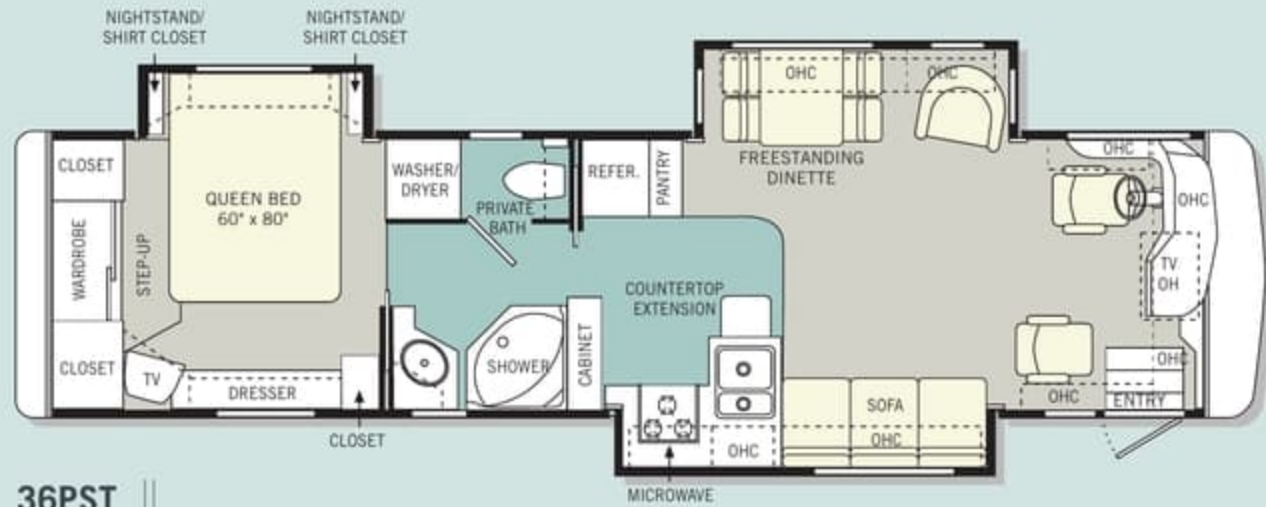
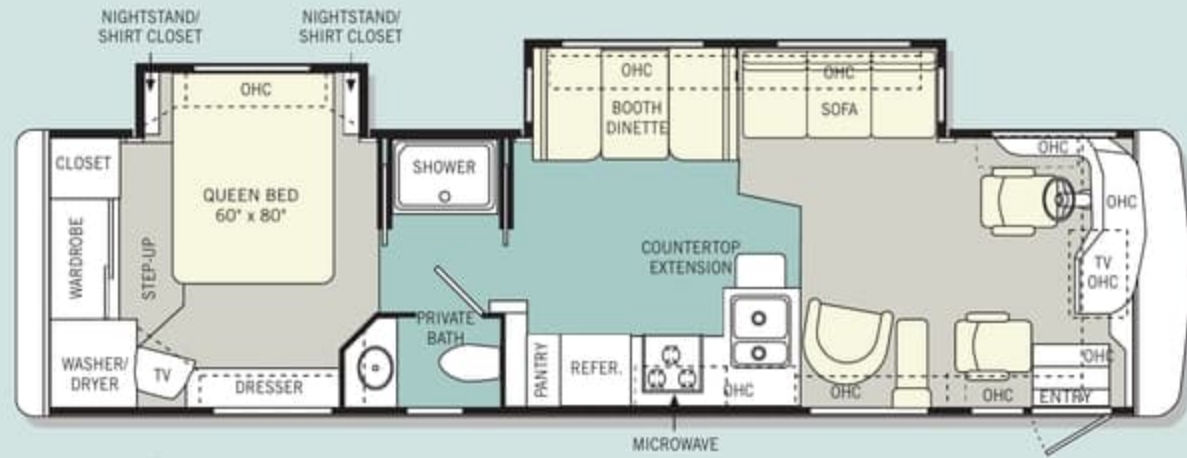
Our **STREAMLINED BAGGAGE DOORS** include secure, easy-to-open integrated **SINGLE-HANDLE LATCHES**. And you'll appreciate the large **PASS-THROUGH STORAGE COMPARTMENTS** with the option of a **SLIDE-OUT TRAY**.



Our exclusive **SLIDE-OUT** design is the strongest and most reliable you'll find anywhere. It features our exclusive multi-layer construction to give you maximum insulation and to reduce the chance of warping, twisting or shifting.

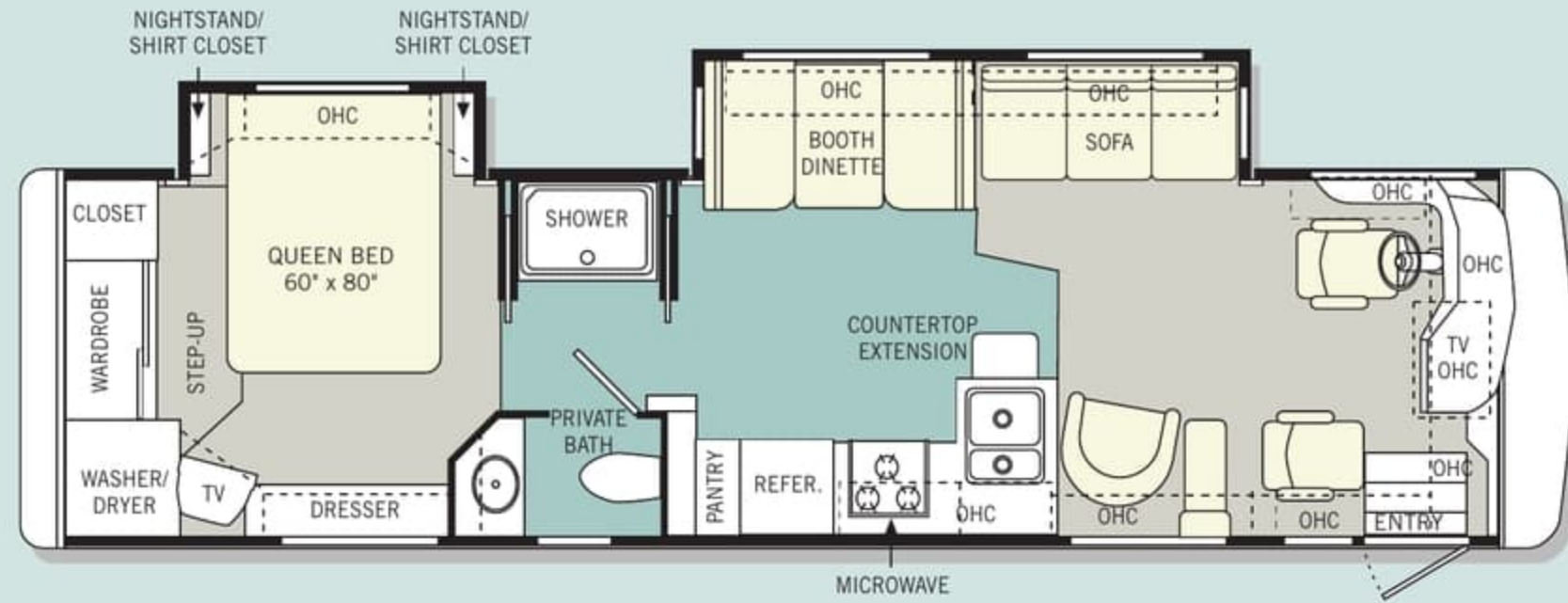
04 FLOORPLANS

Monaco is proud to offer you a wide range of floorplans to suit your lifestyle. As you can see here, you have numerous optional features from which to choose.

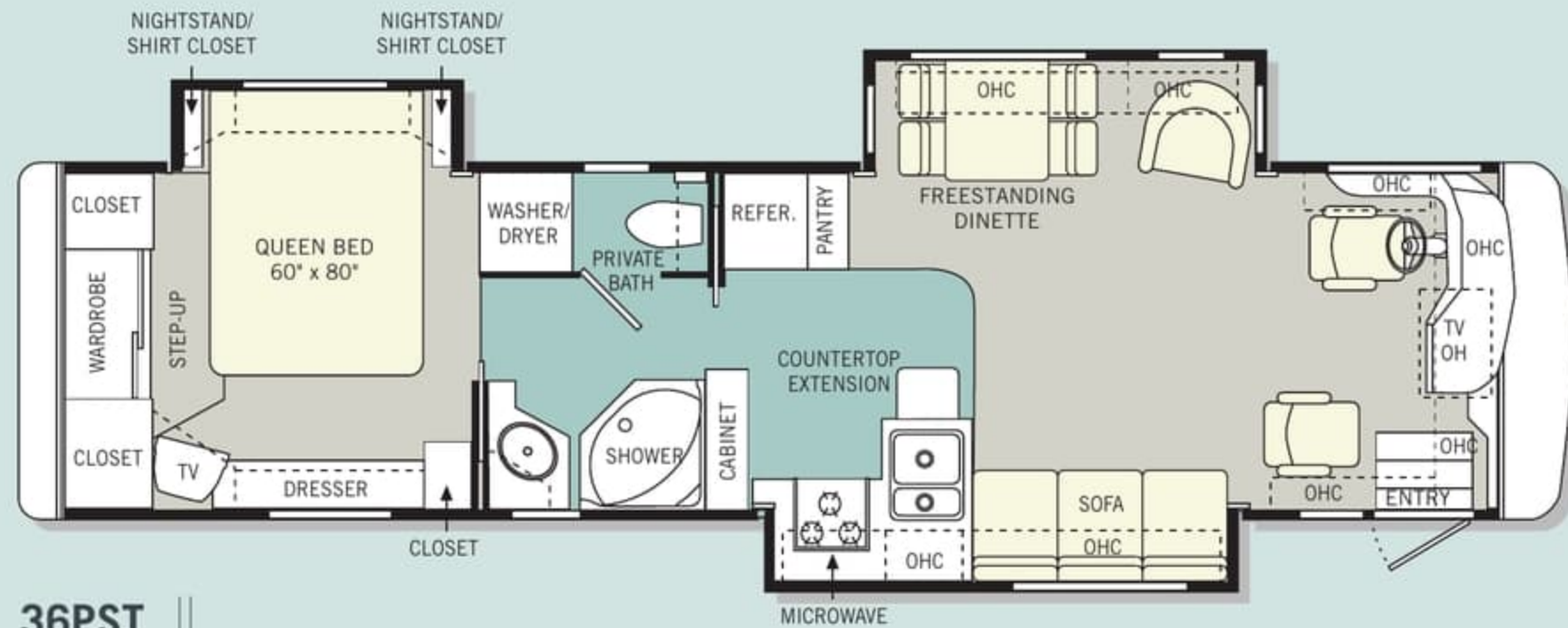


04 FLOORPLANS

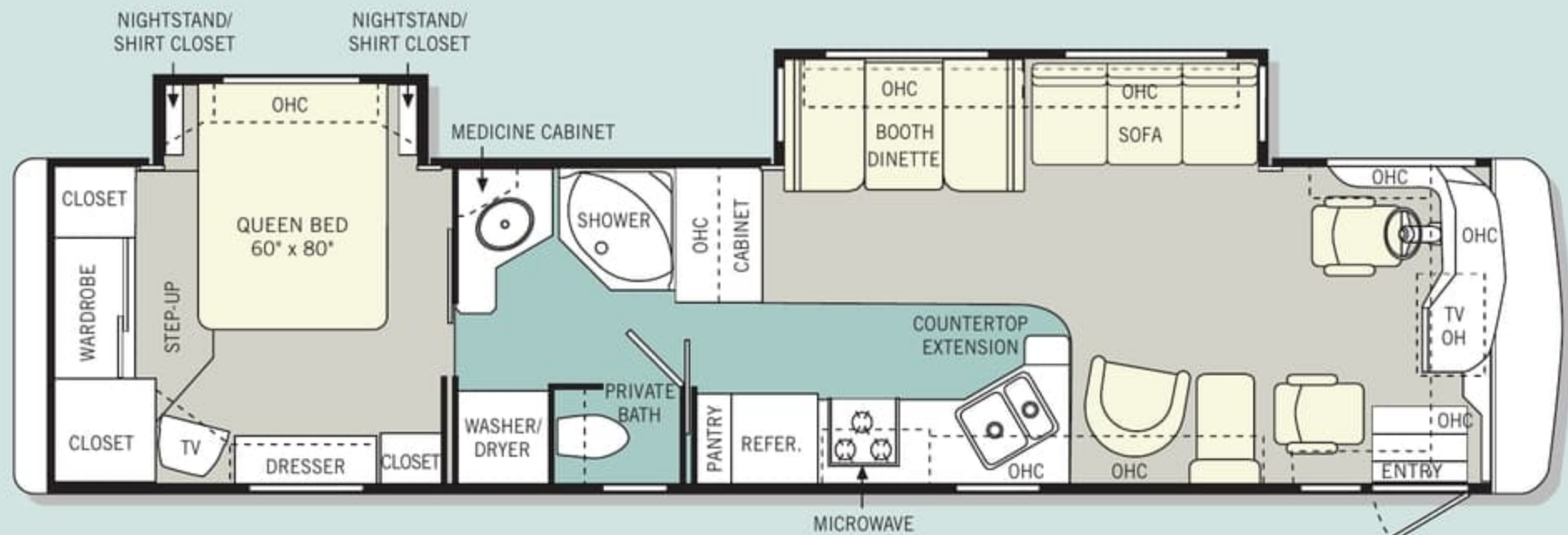
Monaco is proud to offer you a wide range of floorplans to suit your lifestyle. As you can see here, you have numerous optional features from which to choose.



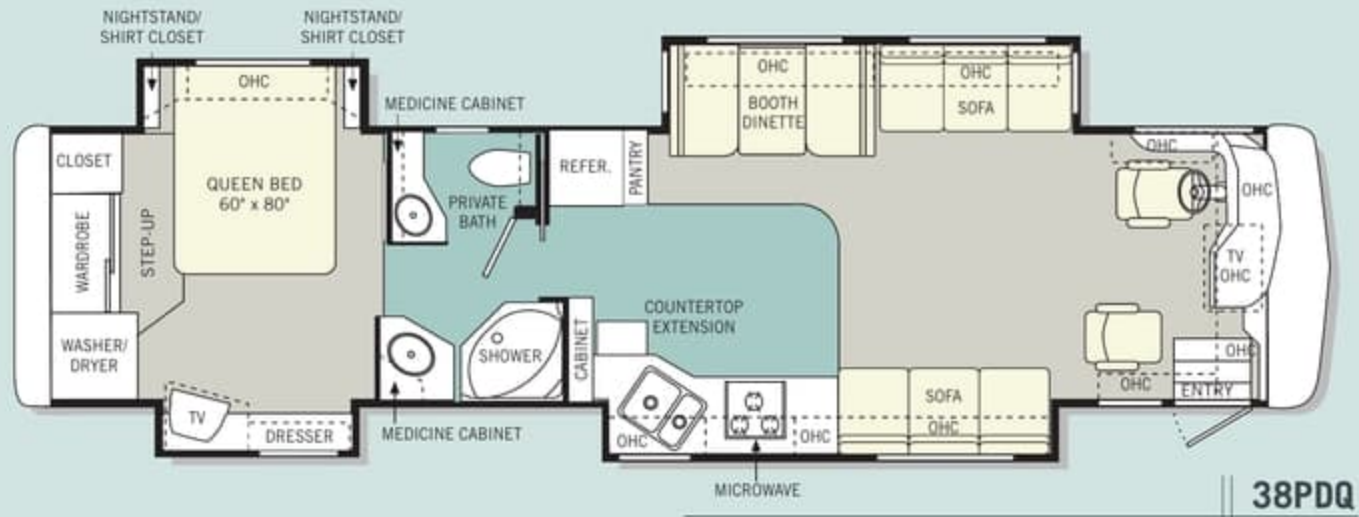
34PDD



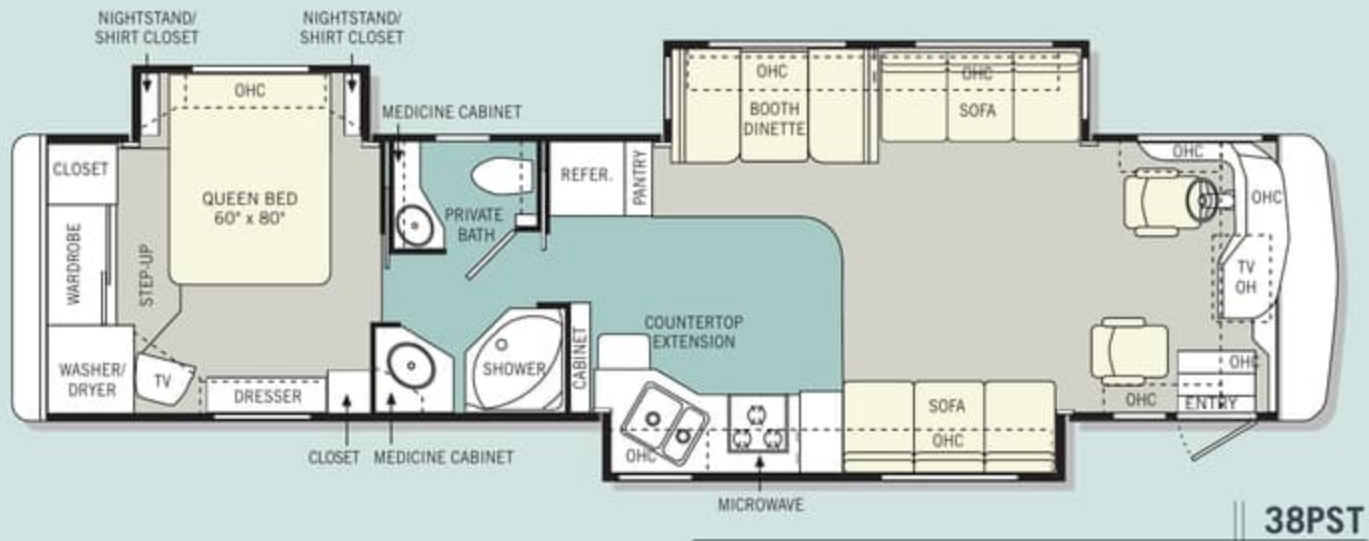
36PST



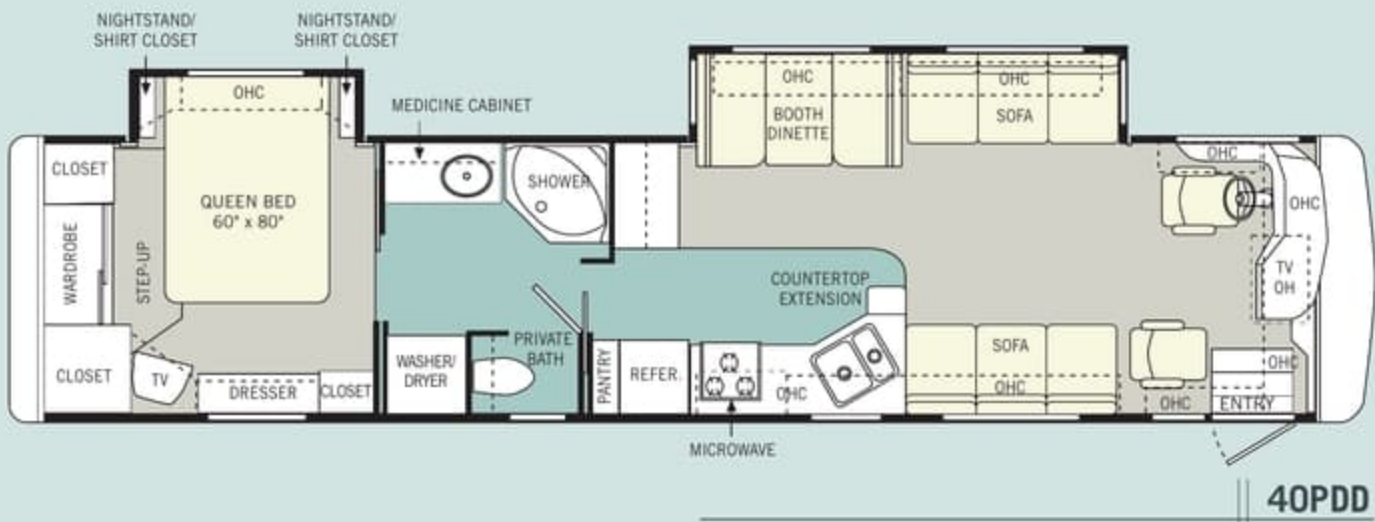
38PDD



38PDQ



38PST

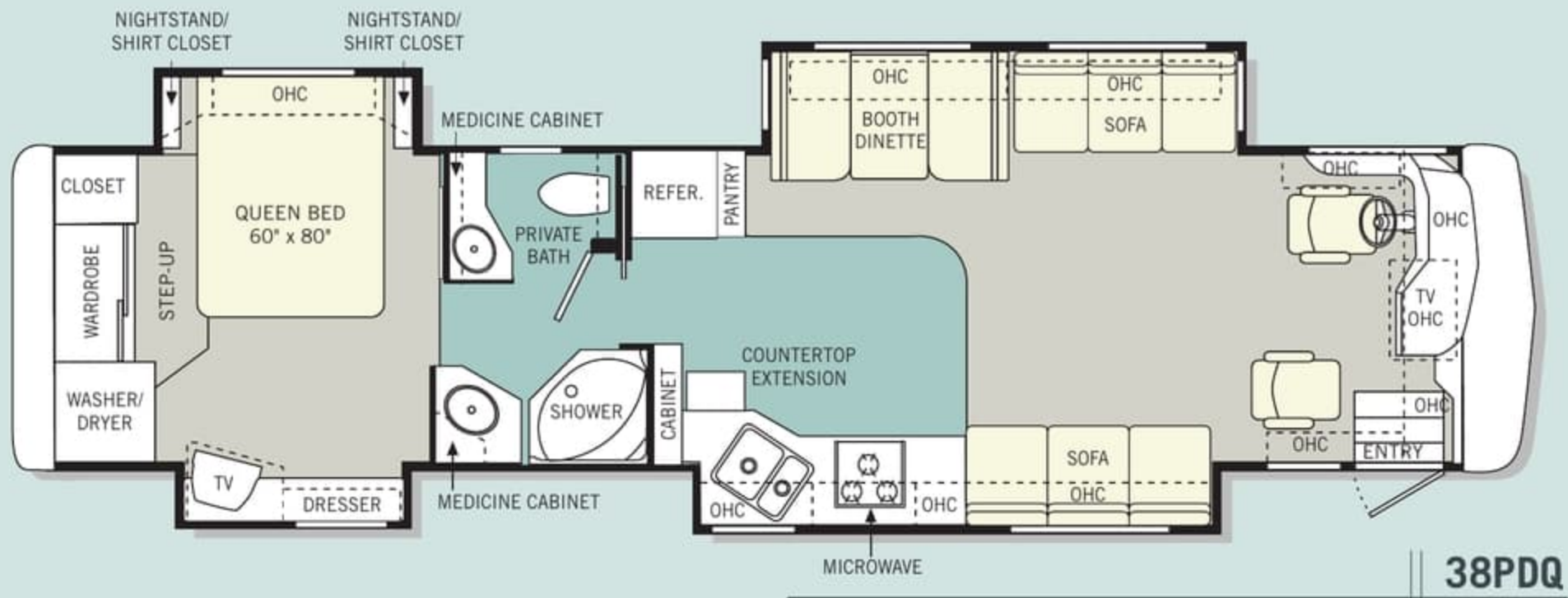


40PDD

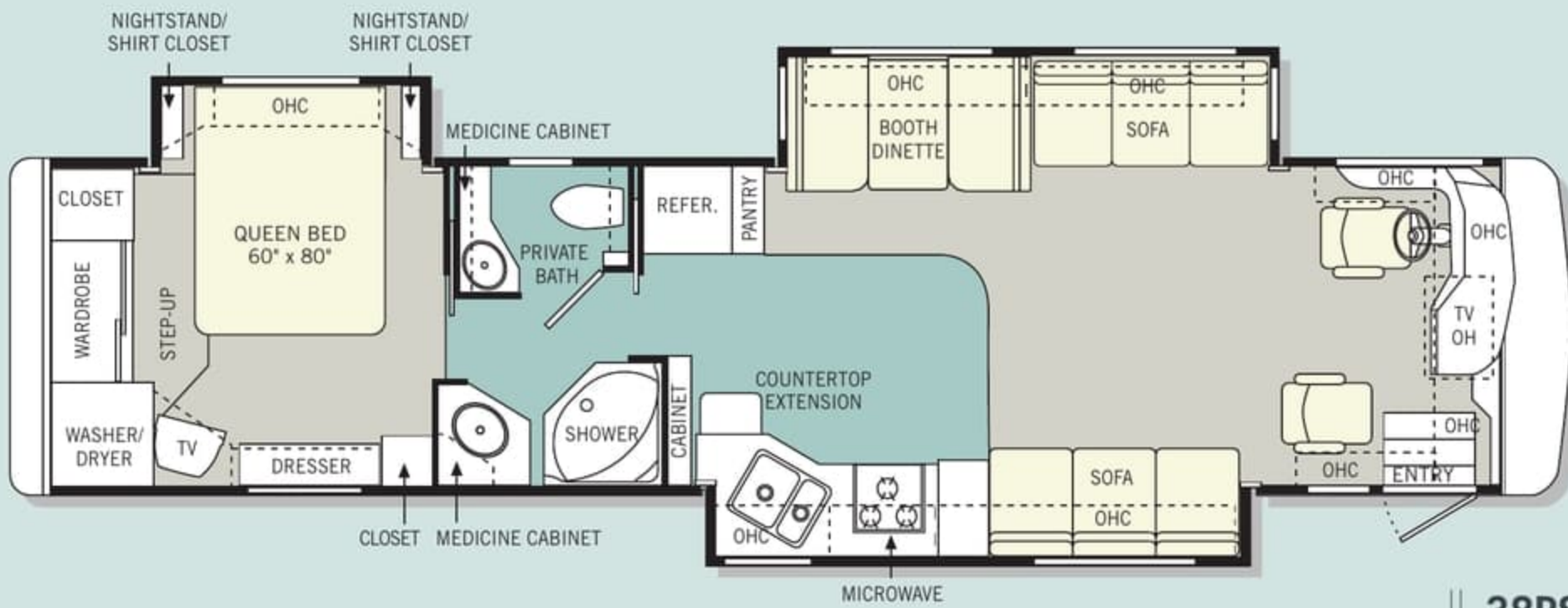


Find all the latest product news and updates online: monacocoach.com

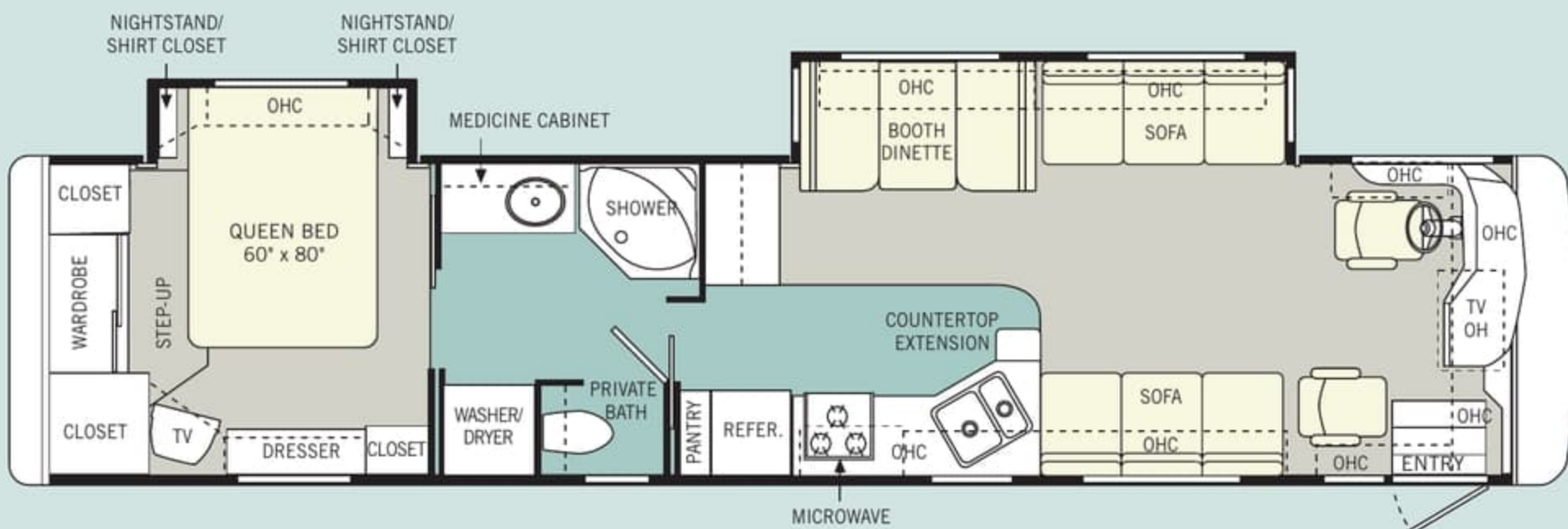




38PDQ



38PST



40PDD



Find all the latest product news and updates online:
monacocoach.com





Find all the latest product news and updates online: monacocoach.com

2004 SPECIFICATIONS

WEIGHT RATINGS (LBS.)	34PDD	36PST	38PDD	38PDQ	38PST	40PDD
Gross Vehicle	32,000	32,000	32,000	32,000	32,000	32,000
Gross Combined	42,000	42,000	42,000	42,000	42,000	42,000
Front Gross Axle	12,000	12,000	12,000	12,000	12,000	12,000
Rear Gross Axle	20,000	20,000	20,000	20,000	20,000	20,000

MEASUREMENTS

Wheelbase	204"	228"	252"	252"	252"	270"
Overall Length	34' 4"	36' 4"	38' 5"	38' 5"	38' 5"	40' 5"
Overall Height with A/C	11' 9"	11' 9"	11' 9"	11' 9"	11' 9"	11' 9"
Interior Height	6' 6"	6' 6"	6' 6"	6' 6"	6' 6"	6' 6"
Interior Width	94 1/2"	94 1/2"	94 1/2"	94 1/2"	94 1/2"	94 1/2"
Exterior Width	100 1/2"	100 1/2"	100 1/2"	100 1/2"	100 1/2"	100 1/2"

TANK CAPACITY (GAL.)

All tank capacities are estimated based upon calculations provided by the tank manufacturers and represent approximate capacities. The actual "usable capacity" may be greater or less than the estimated capacities based upon fabrication and installation of the tanks.

Water Heater	10	10	10	10	10	10
Gray Tank	62	62	62	62	62	62
Black Tank	39	39	39	39	39	39
Fresh Tank	78	78	78	78	78	78
LP Tank ¹	38	38	38	38	38	38
Fuel Tank	90	90	90	90	90	90

¹ Actual filled LP capacity is 80% of listing due to safety shut-off required on tank.



Find all the latest product news and updates online:
monacocoach.com

2004 SPECIFICATIONS

WEIGHT RATINGS (LBS.)	34PDD	36PST	38PDD	38PDQ	38PST	40PDD
Gross Vehicle	32,000	32,000	32,000	32,000	32,000	32,000
Gross Combined	42,000	42,000	42,000	42,000	42,000	42,000
Front Gross Axle	12,000	12,000	12,000	12,000	12,000	12,000
Rear Gross Axle	20,000	20,000	20,000	20,000	20,000	20,000

MEASUREMENTS

Wheelbase	204"	228"	252"	252"	252"	270"
Overall Length	34' 4"	36' 4"	38' 5"	38' 5"	38' 5"	40' 5"
Overall Height with A/C	11' 9"	11' 9"	11' 9"	11' 9"	11' 9"	11' 9"
Interior Height	6' 6"	6' 6"	6' 6"	6' 6"	6' 6"	6' 6"
Interior Width	94 1/2"	94 1/2"	94 1/2"	94 1/2"	94 1/2"	94 1/2"
Exterior Width	100 1/2"	100 1/2"	100 1/2"	100 1/2"	100 1/2"	100 1/2"

TANK CAPACITY (GAL.)

All tank capacities are estimated based upon calculations provided by the tank manufacturers and represent approximate capacities. The actual "usable capacity" may be greater or less than the estimated capacities based upon fabrication and installation of the tanks.

Water Heater	10	10	10	10	10	10
Gray Tank	62	62	62	62	62	62
Black Tank	39	39	39	39	39	39
Fresh Tank	78	78	78	78	78	78
LP Tank ¹	38	38	38	38	38	38
Fuel Tank	90	90	90	90	90	90

¹ Actual filled LP capacity is 80% of listing due to safety shut-off required on tank.

2004 STANDARDS AND OPTIONS

BODY CONSTRUCTION

Alumaframe® Superstructure
Steel Cage Cockpit Construction
Peaked Aluminum Roof
with Fiberglass Insulation
Smooth Gel Coat Fiberglass
Exterior Walls
Front and Rear Molded Fiberglass
Caps with Integrated Bumpers
One-Piece Generator Access Door
Rear Engine Doors Struts

Angled Fiberglass Engine Cover
Steel Framed Floor on Steel Trusses
Laminated Structurwood™ Flooring
Air Activated Power Step Well Cover
Interior Paneling with 3/4" Insulation
Foam Insulated Floor Framing
with Luaun Backer
Power Heated Remote
Exterior Mirrors
Headlamps with Turn Signals

Fog Lights
Flush Mount Metal Fuel Doors
Streamlined Baggage Doors with
Integrated Single Handle Latches
One-Piece Polyethylene Pass-Through
Storage Compartment
Wheel Mud Flaps
Painted Mask and Skirt with
Vinyl Exterior Graphics and Raised
Letter Decal

Interior Entry Step Storage
Roof Ladder
Undercoating

OPTIONS

Chrome Power Heated
Remote Mirrors
Full Length Mud Flap
Storage Bay Slide-Out Tray,
Pass-Through

COCKPIT

Fiberglass Automotive Dash
with Beige Circuit Board
Instrumentation Panel
Dash 12V Chassis Battery Gauge
CD Player/Radio with Four Speakers
Multi-Positioned Sunvisors
Smoked Plexiglas® Doors over
Entertainment Center Systems
in Cockpit

Front Cab over TVs Secured
with Steel Framing
Rear Vision System with Audio
Adjustable Brake and
Accelerator Pedals
Intermittent Windshield Wipers
Tilt/Telescopic Steering Wheel
Cruise Control
Power Steering

ICC Light Switch to Driver's
Side Console
Air Horns
Molded Co-Pilot Side Console,
Map Pocket on Pilot Side Console
Soft Touch Vinyl Pilot
and Co-Pilot Seats
Six-Way Power Pilot Seat
Carpet Driver and Passenger
Floor Mats

OPTIONS

Six-Way Power Co-Pilot Seat
Six-Way Power Co-Pilot Seat
with Power Footrest
Ultraleather™ Pilot and Co-Pilot Seats
Sirius Satellite Radio System
(Requires Subscription)
Power Sunvisor
Pilot and Co-Pilot Pull Down
Sun Shades



2004 STANDARDS AND OPTIONS

BODY CONSTRUCTION

Alumaframe® Superstructure
Steel Cage Cockpit Construction
Peaked Aluminum Roof
with Fiberglass Insulation
Smooth Gel Coat Fiberglass
Exterior Walls
Front and Rear Molded Fiberglass
Caps with Integrated Bumpers
One-Piece Generator Access Door
Rear Engine Doors Struts

Angled Fiberglass Engine Cover
Steel Framed Floor on Steel Trusses
Laminated Structurwood™ Flooring
Air Activated Power Step Well Cover
Interior Paneling with 3/4" Insulation
Foam Insulated Floor Framing
with Luaun Backer
Power Heated Remote
Exterior Mirrors
Headlamps with Turn Signals

Fog Lights
Flush Mount Metal Fuel Doors
Streamlined Baggage Doors with
Integrated Single Handle Latches
One-Piece Polyethylene Pass-Through
Storage Compartment
Wheel Mud Flaps
Painted Mask and Skirt with
Vinyl Exterior Graphics and Raised
Letter Decal

Interior Entry Step Storage
Roof Ladder
Undercoating

OPTIONS

Chrome Power Heated
Remote Mirrors
Full Length Mud Flap
Storage Bay Slide-Out Tray,
Pass-Through

COCKPIT

Fiberglass Automotive Dash
with Beige Circuit Board
Instrumentation Panel
Dash 12V Chassis Battery Gauge
CD Player/Radio with Four Speakers
Multi-Positioned Sunvisors
Smoked Plexiglas® Doors over
Entertainment Center Systems
in Cockpit

Front Cab over TVs Secured
with Steel Framing
Rear Vision System with Audio
Adjustable Brake and
Accelerator Pedals
Intermittent Windshield Wipers
Tilt/Telescopic Steering Wheel
Cruise Control
Power Steering

ICC Light Switch to Driver's
Side Console
Air Horns
Molded Co-Pilot Side Console,
Map Pocket on Pilot Side Console
Soft Touch Vinyl Pilot
and Co-Pilot Seats
Six-Way Power Pilot Seat
Carpet Driver and Passenger
Floor Mats

OPTIONS

Six-Way Power Co-Pilot Seat
Six-Way Power Co-Pilot Seat
with Power Footrest
Ultraleather™ Pilot and Co-Pilot Seats
Sirius Satellite Radio System
(Requires Subscription)
Power Sunvisor
Pilot and Co-Pilot Pull Down
Sun Shades



APPLIANCES AND ACCESSORIES

Large Double-Door Refrigerator
High-Output Three-Burner Cooktop
Bi-Fold Range Cover with Corian® Covers
Convection Spacesaver Microwave
24" Flat Screen Stereo Color TV with Remote Control in Living Area
Living Area Stereo TV Wired through Ceiling Speakers
20" Flatscreen Color TV with Remote Control in Bedroom

TV Antenna with TV Jacks
VCR Prep and Video Control Box with Booster
Dual Exterior Hook-Ups for DSS Dish and Cable
CB Prep
Digital Satellite System Prep
Cable TV Hook-Up and Telephone Jacks
VCR or DVD Player Options to be Wired to Both TV Locations

Exterior Gas Line Hook-up Prep for LP Accessories
Washer/Dryer Prep

OPTIONS

Large Double-Door Refrigerator with Ice Maker
Large Four-Door Refrigerator with Ice Maker (N/A with Roll-Out Pantry)
High-Output Three-Burner Range with Oven

Combination Washer/Dryer
VCR
DVD Player
Home Theater System with DVD Player
Exterior Entertainment Center, CD Player Radio with Two Speakers
Fully Automatic Digital Satellite System

INTERIOR

Vintage Oak Cabinetry
Raised Panel Hardwood Cabinet Doors
Hardwood Cabinet End Panels
Refrigerator Metal Panel Accent Inserts
Decorative Wall Board
Wallpaper Border inside Bath
Self-Supporting Top Hinged Overhead Storage Doors and Positive Catches on All Other Doors
Low Friction Roller Drawer Guides
Wood Interior Grab Handle/
Magazine Rack on Dash at Entry Door
Brass Cabinetry Hardware and Bath Accessories
Integrated Cup Holder in Slide-Out next to Sofa
Corian® Kitchen Countertop with Backsplash, Under-Mounted Stainless Steel Sink with Two Sink Covers
Recessed Kitchen Countertop Extensions

Corian® Bath Lav Countertop with Integrated Bowl
Dinette Tops Laminated with Corian® Edge Treatment
All Other Countertops Laminated with Wood Edge, except Kitchen, Bath, Lav and Dinette
Kitchen Overhead Cabinets with Adjustable Shelf
Kitchen Pantry with Adjustable Shelves next to Refrigerator
Silverware Drawer with Organizer
Kitchen Base Cabinets (N/A with Range Option)
Sink Cover Storage Area inside Kitchen Base Cabinet (N/A with Range Option)
Kitchen Mirrors behind Stove Area
Kitchen Flooring Armstrong Laminated Tile
Bath Flooring Armstrong Laminated Tile

Upgraded Nylon Carpeting with Scotchgard™ Stain Release Pad in Living Area and Bedroom
Engine Cover Rug
Soft Touch Padded Vinyl Ceiling
Hardwood Slide-Out Fascia Design with Metal Insert Accent
Accent Mirrors on Living Area, Bath Wall Living Room Side (N/A: 38PDD, 40PDD)
Decorative Picture in Bedroom (34PDD, 36PST, 38PDQ, 38PST)
Solid Wood Raised Panel Bathroom Door
Wood Trim for Bath Door Opening Hallway Side
Crown Molding in Bedroom and Living Area on All Open Walls
Medicine Cabinet with Adjustable Shelves (N/A on Angle Cabinets)
Bathroom Lav Mirror
Towel Bar inside Private Bath
Two Towel Rings in Bathroom

Oversized Rear Wardrobe Closet with Deluxe Mirror Door Frames Brass Finish
Bedroom Dresser Foot of Bed with Hamper and Decorative Furniture Leg
Reversible Bedspread, Pillow Shams and Two Decorative Pillows
Day/Night Pleated Shades in Living Area and Blackout Shades in Bedroom
Mini Blinds in Kitchen and Bathroom
Soil Repellant on Fabric, Teflon® Fabric Protection

OPTIONS

Decors: Kona, Urban Escape, Green Manor, Ironwood Taupe
Wood Choice: Regal Cherry, Maple
Armstrong Laminated Tile at Entryway
Raised Panel Doors on Refrigerator IPO Metal Inserts
Roll-Out Pantry next to Refrigerator with 4 Baskets (N/A with Four-Door Refrigerator Option)

APPLIANCES AND ACCESSORIES

Large Double-Door Refrigerator
High-Output Three-Burner Cooktop
Bi-Fold Range Cover with Corian® Covers
Convection Spacesaver Microwave
24" Flat Screen Stereo Color TV with Remote Control in Living Area
Living Area Stereo TV Wired through Ceiling Speakers
20" Flatscreen Color TV with Remote Control in Bedroom

TV Antenna with TV Jacks
VCR Prep and Video Control Box with Booster
Dual Exterior Hook-Ups for DSS Dish and Cable
CB Prep
Digital Satellite System Prep
Cable TV Hook-Up and Telephone Jacks
VCR or DVD Player Options to be Wired to Both TV Locations

Exterior Gas Line Hook-up Prep for LP Accessories
Washer/Dryer Prep

OPTIONS

Large Double-Door Refrigerator with Ice Maker
Large Four-Door Refrigerator with Ice Maker (N/A with Roll-Out Pantry)
High-Output Three-Burner Range with Oven

Combination Washer/Dryer
VCR
DVD Player
Home Theater System with DVD Player
Exterior Entertainment Center, CD Player Radio with Two Speakers
Fully Automatic Digital Satellite System

INTERIOR

Vintage Oak Cabinetry
Raised Panel Hardwood Cabinet Doors
Hardwood Cabinet End Panels
Refrigerator Metal Panel Accent Inserts
Decorative Wall Board
Wallpaper Border inside Bath
Self-Supporting Top Hinged Overhead Storage Doors and Positive Catches on All Other Doors
Low Friction Roller Drawer Guides
Wood Interior Grab Handle/Magazine Rack on Dash at Entry Door
Brass Cabinetry Hardware and Bath Accessories
Integrated Cup Holder in Slide-Out next to Sofa
Corian® Kitchen Countertop with Backsplash, Under-Mounted Stainless Steel Sink with Two Sink Covers
Recessed Kitchen Countertop Extensions

Corian® Bath Lav Countertop with Integrated Bowl
Dinette Tops Laminated with Corian® Edge Treatment
All Other Countertops Laminated with Wood Edge, except Kitchen, Bath, Lav and Dinette
Kitchen Overhead Cabinets with Adjustable Shelf
Kitchen Pantry with Adjustable Shelves next to Refrigerator
Silverware Drawer with Organizer
Kitchen Base Cabinets (N/A with Range Option)
Sink Cover Storage Area inside Kitchen Base Cabinet (N/A with Range Option)
Kitchen Mirrors behind Stove Area
Kitchen Flooring Armstrong Laminated Tile
Bath Flooring Armstrong Laminated Tile

Upgraded Nylon Carpeting with Scotchgard™ Stain Release Pad in Living Area and Bedroom
Engine Cover Rug
Soft Touch Padded Vinyl Ceiling
Hardwood Slide-Out Fascia Design with Metal Insert Accent
Accent Mirrors on Living Area, Bath Wall Living Room Side (N/A: 38PDD, 40PDD)
Decorative Picture in Bedroom (34PDD, 36PST, 38PDQ, 38PST)
Solid Wood Raised Panel Bathroom Door
Wood Trim for Bath Door Opening Hallway Side
Crown Molding in Bedroom and Living Area on All Open Walls
Medicine Cabinet with Adjustable Shelves (N/A on Angle Cabinets)
Bathroom Lav Mirror
Towel Bar inside Private Bath
Two Towel Rings in Bathroom

Oversized Rear Wardrobe Closet with Deluxe Mirror Door Frames Brass Finish
Bedroom Dresser Foot of Bed with Hamper and Decorative Furniture Leg
Reversible Bedspread, Pillow Shams and Two Decorative Pillows
Day/Night Pleated Shades in Living Area and Blackout Shades in Bedroom
Mini Blinds in Kitchen and Bathroom
Soil Repellant on Fabric, Teflon® Fabric Protection

OPTIONS

Decors: Kona, Urban Escape, Green Manor, Ironwood Taupe
Wood Choice: Regal Cherry, Maple
Armstrong Laminated Tile at Entryway
Raised Panel Doors on Refrigerator
IPO Metal Inserts
Roll-Out Pantry next to Refrigerator with 4 Baskets (N/A with Four-Door Refrigerator Option)

FURNITURE

Queen Bed with Shirt Closets and Nightstands
Party Table behind Co-Pilot Seat (34PDD, 38PDD)
Rotocast Booth Dinette with Drawers (N/A: 36PST)
Freestanding Dinette with Wall Cabinet, Two Freestanding Chairs and Two Folding Chairs (36PST)
Roadside Furniture, Fabric Sleeper Sofa with Two Pillows (N/A: 36PST)

Roadside Furniture, Fabric Barrel Chair (36PST)
Curbside Furniture, Fabric Sleeper Sofa with Two Pillows (N/A: 34PDD, 38PDD)
Curbside Furniture, Fabric Barrel Chair (34PDD, 38PDD)

OPTIONS

Roadside Furniture, Fabric Recliner (36PST)
Roadside Furniture, Ultraleather™ Recliner (36PST)

Roadside Furniture, Fabric Wonder Bed with Drawer and Two Pillows (N/A: 36PST)
Roadside Furniture, Ultraleather™ Wonder Bed with Drawer and Two Pillows (N/A: 36PST)
Roadside Furniture, Fabric Electric Sofa with Two Pillows (N/A: 36PST)
Roadside Furniture, Ultraleather™ Sleeper Sofa with Two Pillows (N/A: 36PST)
Curbside Furniture, Fabric Recliner (34PDD, 38PDD)

Curbside Furniture, Ultraleather™ Recliner (34PDD, 38PDD)
Curbside Furniture, Ultraleather™ Sleeper Sofa with Two Pillows (N/A: 34PDD, 38PDD)
Freestanding Dinette with Wall Cabinet, Two Freestanding Chairs and Two Folding Chairs (N/A: 36PST)

ELECTRICAL SYSTEMS AND LIGHTS

50 Amp 120V Distribution Panel and Power Cord
60 Amp Electronic 12V Power Converter
Onan® 6.5 kW LP Generator
Two 6V House Batteries
Battery Disconnect Switch at Front Door
12V and 110V Outlet in Cockpit Area
Porch Light
Exterior Power Entry Step, with Light

Interior Step Well Entry Step Lights
Lights in Outside Storage Compartments
120V Receptacles in Outside Storage Compartment
Underhood Utility Light
Computer Hook-Up with Phone Jack in Dinette Area
Pilot and Co-Pilot Map Lights
Systems Control Center in Hallway
Fluorescent Lights under Kitchen Overhead

Fluorescent Ceiling Lights Throughout
Fluorescent Ceiling Lights inside Living Area Slide-Out House
Decorative Framed Galley Fluorescent Light
Decorative Lighting Brass Living Room Wall Light, Dinette Overhead and Cosmetic Vanity Light
Halogen Lights under Living Room, Dining Room, and Bedroom Dresser Overhead Cabinets

Gem Lights over Bed Brass Finish with His and Hers Switches

OPTIONS

Energy Management System
2000 Watt Inverter with Two Additional Batteries
Storage Compartment Tank Monitor Gauge
Manual Retracting Power Cord Reel
Onan® 7.5 kW QD Diesel Generator

FURNITURE

Queen Bed with Shirt Closets and Nightstands
Party Table behind Co-Pilot Seat (34PDD, 38PDD)
Rotocast Booth Dinette with Drawers (N/A: 36PST)
Freestanding Dinette with Wall Cabinet, Two Freestanding Chairs and Two Folding Chairs (36PST)
Roadside Furniture, Fabric Sleeper Sofa with Two Pillows (N/A: 36PST)

Roadside Furniture, Fabric Barrel Chair (36PST)
Curbside Furniture, Fabric Sleeper Sofa with Two Pillows (N/A: 34PDD, 38PDD)
Curbside Furniture, Fabric Barrel Chair (34PDD, 38PDD)

OPTIONS

Roadside Furniture, Fabric Recliner (36PST)
Roadside Furniture, Ultraleather™ Recliner (36PST)

Roadside Furniture, Fabric Wonder Bed with Drawer and Two Pillows (N/A: 36PST)
Roadside Furniture, Ultraleather™ Wonder Bed with Drawer and Two Pillows (N/A: 36PST)
Roadside Furniture, Fabric Electric Sofa with Two Pillows (N/A: 36PST)
Roadside Furniture, Ultraleather™ Sleeper Sofa with Two Pillows (N/A: 36PST)
Curbside Furniture, Fabric Recliner (34PDD, 38PDD)

Curbside Furniture, Ultraleather™ Recliner (34PDD, 38PDD)
Curbside Furniture, Ultraleather™ Sleeper Sofa with Two Pillows (N/A: 34PDD, 38PDD)
Freestanding Dinette with Wall Cabinet, Two Freestanding Chairs and Two Folding Chairs (N/A: 36PST)

ELECTRICAL SYSTEMS AND LIGHTS

50 Amp 120V Distribution Panel and Power Cord
60 Amp Electronic 12V Power Converter
Onan® 6.5 kW LP Generator
Two 6V House Batteries
Battery Disconnect Switch at Front Door
12V and 110V Outlet in Cockpit Area
Porch Light
Exterior Power Entry Step, with Light

Interior Step Well Entry Step Lights
Lights in Outside Storage Compartments
120V Receptacles in Outside Storage Compartment
Underhood Utility Light
Computer Hook-Up with Phone Jack in Dinette Area
Pilot and Co-Pilot Map Lights
Systems Control Center in Hallway
Fluorescent Lights under Kitchen Overhead

Fluorescent Ceiling Lights Throughout
Fluorescent Ceiling Lights inside Living Area Slide-Out House
Decorative Framed Galley Fluorescent Light
Decorative Lighting Brass Living Room Wall Light, Dinette Overhead and Cosmetic Vanity Light
Halogen Lights under Living Room, Dining Room, and Bedroom Dresser Overhead Cabinets

Gem Lights over Bed Brass Finish with His and Hers Switches

OPTIONS

Energy Management System
2000 Watt Inverter with Two Additional Batteries
Storage Compartment Tank Monitor Gauge
Manual Retracting Power Cord Reel
Onan® 7.5 kW QD Diesel Generator



PLUMBING AND LP SYSTEMS

Kitchen Stainless Steel Under-Mounted Sink with Single Lever Chrome Faucet

Separate Chrome Faucet for Filtered Water

Bath Lav Faucet Single Handle Brass Finish

Demand Water System and Water Pump

10 Gallon LP Gas/Electric Water Heater with Electronic Ignition, DSI

Winterization Valving System

Water Heater By-Pass Valve

Porcelain Toilet with Sprayer

No-Fuss Flush Holding Tank Rinsing System

Insulated Systems Compartment with Easy Access to Hook-Up

Shower inside Wet Bay with Hot/Cold Water

Gravity and Pressurized Water Fill

Contained Storage Area for Sewer Hose

One-Piece Fiberglass Shower

Brass Shower Door Frame with Decorative Glass

OPTIONS

Bath Tub

HEATING, VENTS, AND AIR CONDITIONING

One 13.5M BTU and One 11.0M BTU Roof Air Conditioner with Ducted Air and Digital Thermostat Control (N/A: 34PDD)

One 13.5M BTU Roof Air Conditioner with Ducted Air and Digital Thermostat Control (34PDD)

Electronic Ignition Furnace (35M – 34PDD) (40M – 36PST, 38PDD) (Two 25M – 38PDQ, 38PST, 40PDD)

Electronic AC/Heat Climate Control System

In-Floor Ducted Heating System

12V Roof Vent in Living Area and Bedroom (N/A with Twin A/C Option) (34PDD)

12V Roof Vent in Bath, Both Locations

Fantastic 12V Attic Fan in Kitchen with Thermostat – 34' Unit Only with Twin A/C Option

12V Heater in Wet Bay

Metal Floor Registers (Antique Brass)

OPTIONS

Two Air Conditioners with Ducted Air and Thermostat, One 13.5M BTU and One 11.0M BTU (34PDD)

Fantastic 12V Attic Fan with Rain Sensor with Wall Thermostat in Living Area (N/A with Twin A/C Option) (34PDD)

Fantastic 12V Attic Fan with Rain Sensor with Wall Thermostat in Bedroom (N/A with Single A/C Option) (34PDD)

Fantastic 12V Attic Fan with Rain Sensor with Wall Thermostat in Walk-Through Area of Bath

Fantastic 12V Attic Fan with Rain Sensor with Wall Thermostat in Kitchen (N/A with Single A/C Option) (34PDD)

WINDOWS, DOORS, AND AWNINGS

Radius Flush Mount Dual Pane Safety Glass Dark Tinted Slider Windows

Front Entry Door with Removable Screen and Anti-Skid Steps

Interior and Exterior Grab Handles

Acrylic Patio Awning with Metal Cover

Topper Slide-Out Awnings Living Area and Bedroom

Window Awnings on All Slide-Out House Windows (except Kitchen Windows and Windows under Patio Awning)

Tinted Skylight in Bathroom with Protecta Glaze

OPTIONS

Automatic Patio Awning

Front Door Awning

Bedroom Window Awning on Sidewall

PLUMBING AND LP SYSTEMS

Kitchen Stainless Steel Under-Mounted Sink with Single Lever Chrome Faucet
Separate Chrome Faucet for Filtered Water
Bath Lav Faucet Single Handle Brass Finish

Demand Water System and Water Pump
10 Gallon LP Gas/Electric Water Heater with Electronic Ignition, DSI
Winterization Valving System
Water Heater By-Pass Valve
Porcelain Toilet with Sprayer

No-Fuss Flush Holding Tank Rinsing System
Insulated Systems Compartment with Easy Access to Hook-Up
Shower inside Wet Bay with Hot/Cold Water
Gravity and Pressurized Water Fill

Contained Storage Area for Sewer Hose
One-Piece Fiberglass Shower
Brass Shower Door Frame with Decorative Glass

OPTIONS

Bath Tub

HEATING, VENTS, AND AIR CONDITIONING

One 13.5M BTU and One 11.0M BTU Roof Air Conditioner with Ducted Air and Digital Thermostat Control (N/A: 34PDD)
One 13.5M BTU Roof Air Conditioner with Ducted Air and Digital Thermostat Control (34PDD)
Electronic Ignition Furnace (35M – 34PDD) (40M – 36PST, 38PDD) (Two 25M – 38PDQ, 38PST, 40PDD)
Electronic AC/Heat Climate Control System

In-Floor Ducted Heating System
12V Roof Vent in Living Area and Bedroom (N/A with Twin A/C Option) (34PDD)
12V Roof Vent in Bath, Both Locations
Fantastic 12V Attic Fan in Kitchen with Thermostat – 34' Unit Only with Twin A/C Option
12V Heater in Wet Bay
Metal Floor Registers (Antique Brass)

OPTIONS

Two Air Conditioners with Ducted Air and Thermostat, One 13.5M BTU and One 11.0M BTU (34PDD)
Fantastic 12V Attic Fan with Rain Sensor with Wall Thermostat in Living Area (N/A with Twin A/C Option) (34PDD)

Fantastic 12V Attic Fan with Rain Sensor with Wall Thermostat in Bedroom (N/A with Single A/C Option) (34PDD)
Fantastic 12V Attic Fan with Rain Sensor with Wall Thermostat in Walk-Through Area of Bath
Fantastic 12V Attic Fan with Rain Sensor with Wall Thermostat in Kitchen (N/A with Single A/C Option) (34PDD)

WINDOWS, DOORS, AND AWNINGS

Radius Flush Mount Dual Pane Safety Glass Dark Tinted Slider Windows
Front Entry Door with Removable Screen and Anti-Skid Steps

Interior and Exterior Grab Handles
Acrylic Patio Awning with Metal Cover
Topper Slide-Out Awnings Living Area and Bedroom

Window Awnings on All Slide-Out House Windows (except Kitchen Windows and Windows under Patio Awning)
Tinted Skylight in Bathroom with Protecta Glaze

OPTIONS

Automatic Patio Awning
Front Door Awning
Bedroom Window Awning on Sidewall

SAFETY

Fire Extinguisher

Deadbolt Lock on Entrance Door

120V GFI Protected Circuit Kitchen,
Bath, and Exterior

LP Gas Detector

Smoke Detector

Carbon Monoxide Detector

Driver and Passenger Three-Point
Seat Belts

Third Brake Safety Light

Egress Window

CHASSIS/ENGINE/SUSPENSION

Roadmaster Stacked Raised Rail
Chassis – RR4R

Cummins® ISC 330 Engine with
Allison® 3000 MH 6-Speed World
Transmission and Electronic Shifter

Chrome Exhaust Tip – Engine

Cubic Inch Displacement:
540.5"/8.3L

Torque: 950 lbs./ft. Max. Net
at 1,400 RPM

Fuel Tank Capacity 90 Gallon

Dual Fuel Fill

160 Amp Alternator

Rear Axle Ratio: 4.30:1

Radial Tires: 275/70R/22.5

Stainless Steel Wheel Simulators

Four Gas Shock Absorbers

Four Air Bags

Anti-Lock Braking System
with Full Air Brakes

Automatic Traction Control

Exhaust Brake

Auto Slack Adjusters

Transmission Temperature Gauge

Air Cleaner Restriction Indicator

Fuel and Water Separator

Remote Transmission Fill

Manual Hydraulic Leveling System

10,000 Lb. Hitch Receiver
with Connector

OPTIONS

Polished Aluminum Wheels

The actual overall length of the recreational vehicle may differ from that indicated in the brochure due to variances in the manufacturing process and/or installed components. The actual length may be greater or less than that indicated. Due to the large variety of options and floorplan arrangements available to our customers, actual weights for each unit can differ significantly. Monaco Coach provides a weight sticker on each unit we produce which includes that unit's tank capacities and approximate weight. Consult your local Monaco Coach dealer for unit availability and further information. Your towed vehicle should be equipped with auxiliary brakes if the weight of the towed load exceeds 1,000 lbs. The information printed in this brochure reflects product design, fabrication, and component parts at the date of printing. The manufacturer reserves the right, at any time, to make changes in product design or material or component specifications as its sole option, without notice. This includes the substitution of components of a different brand or trade name which will result in comparable performance. All information printed in this brochure is subject to change after the date of printing. Some features shown or mentioned in this brochure are optional and may only be available in selected floorplans. Photographs may show props or decorations that are not standard equipment on Monaco Coach models. Monaco Coach, the Monaco logo and its design, are registered trademarks. All other products and company names are trademarks and/or registered trademarks of their respective holders. While the color of the motorhome's exterior and the interior fabrics depicted in this sales brochure are fair and reasonable depictions, the colors depicted may not be an exact match of the actual colors because of the variances in photo-processing and variances caused by inserting the photographs within the sales brochure. Due to product improvements, changes during the model year and/or transcription errors that may occur, information represented within this brochure may not be accurate at the time of your purchase. If certain information is significant to your purchasing decision, please confirm the information with your dealer prior to submitting your order.

SAFETY

Fire Extinguisher

Deadbolt Lock on Entrance Door

120V GFI Protected Circuit Kitchen,
Bath, and Exterior

LP Gas Detector

Smoke Detector

Carbon Monoxide Detector

Driver and Passenger Three-Point
Seat Belts

Third Brake Safety Light

Egress Window

CHASSIS/ENGINE/SUSPENSION

Roadmaster Stacked Raised Rail
Chassis – RR4R

Cummins® ISC 330 Engine with
Allison® 3000 MH 6-Speed World
Transmission and Electronic Shifter

Chrome Exhaust Tip – Engine

Cubic Inch Displacement:
540.5"/8.3L

Torque: 950 lbs./ft. Max. Net
at 1,400 RPM

Fuel Tank Capacity 90 Gallon

Dual Fuel Fill

160 Amp Alternator

Rear Axle Ratio: 4.30:1

Radial Tires: 275/70R/22.5

Stainless Steel Wheel Simulators

Four Gas Shock Absorbers

Four Air Bags

Anti-Lock Braking System
with Full Air Brakes

Automatic Traction Control

Exhaust Brake

Auto Slack Adjusters

Transmission Temperature Gauge

Air Cleaner Restriction Indicator

Fuel and Water Separator

Remote Transmission Fill

Manual Hydraulic Leveling System

10,000 Lb. Hitch Receiver
with Connector

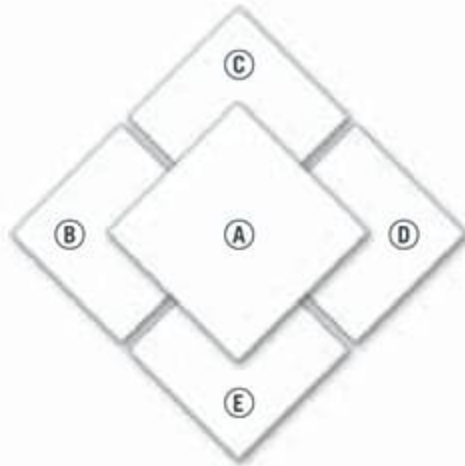
OPTIONS

Polished Aluminum Wheels

The actual overall length of the recreational vehicle may differ from that indicated in the brochure due to variances in the manufacturing process and/or installed components. The actual length may be greater or less than that indicated. Due to the large variety of options and floorplan arrangements available to our customers, actual weights for each unit can differ significantly. Monaco Coach provides a weight sticker on each unit we produce which includes that unit's tank capacities and approximate weight. Consult your local Monaco Coach dealer for unit availability and further information. Your towed vehicle should be equipped with auxiliary brakes if the weight of the towed load exceeds 1,000 lbs. The information printed in this brochure reflects product design, fabrication, and component parts at the date of printing. The manufacturer reserves the right, at any time, to make changes in product design or material or component specifications as its sole option, without notice. This includes the substitution of components of a different brand or trade name which will result in comparable performance. All information printed in this brochure is subject to change after the date of printing. Some features shown or mentioned in this brochure are optional and may only be available in selected floorplans. Photographs may show props or decorations that are not standard equipment on Monaco Coach models. Monaco Coach, the Monaco logo and its design, are registered trademarks. All other products and company names are trademarks and/or registered trademarks of their respective holders. While the color of the motorhome's exterior and the interior fabrics depicted in this sales brochure are fair and reasonable depictions, the colors depicted may not be an exact match of the actual colors because of the variances in photo-processing and variances caused by inserting the photographs within the sales brochure. Due to product improvements, changes during the model year and/or transcription errors that may occur, information represented within this brochure may not be accurate at the time of your purchase. If certain information is significant to your purchasing decision, please confirm the information with your dealer prior to submitting your order.

EXTERIOR COLORS, FABRICS AND WOODS

For 2004, our designers have selected exquisite fabric combinations for each model of the Knight. Now, it's your turn to choose.



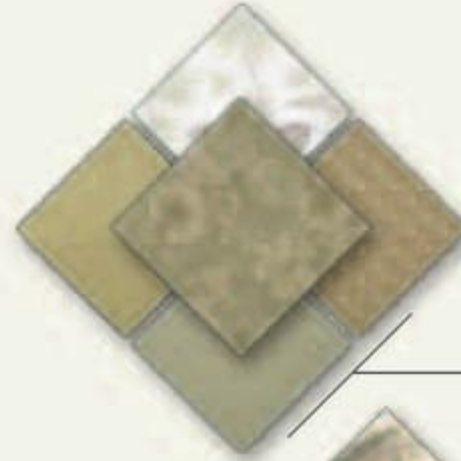
FABRIC SWATCHES

- A. *Sofa*
- B. *Carpet*
- C. *Bedsread*
- D. *Dinette Chairs*
- E. *Accent*

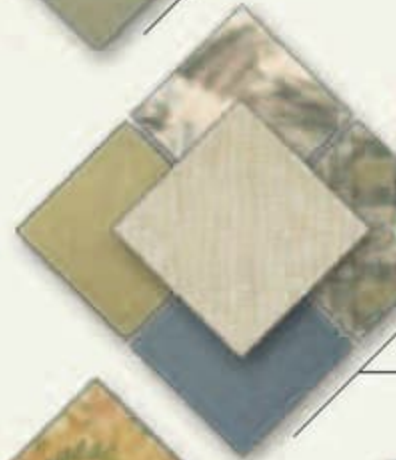


Manufactured in, not added on. 3M Scotchgard™ Carpet Stain Release is applied during the carpet manufacturing process for a higher level of protection. Dupont Teflon® soil repellent is applied to virtually all upholstery fabric during the finishing process for superior coverage.*

*Brand and application of carpet or upholstery fabric protection may vary depending on date recreational vehicle was manufactured.



GREEN MANOR



IRONWOOD TAUPE



KONA



URBAN ESCAPE



Vintage Oak



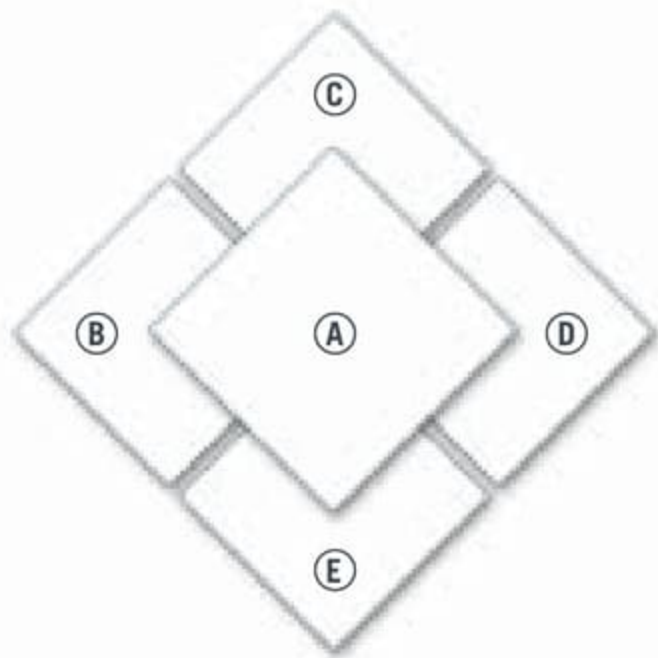
Regal Cherry



Maple

EXTERIOR COLORS, FABRICS AND WOODS

For 2004, our designers have selected exquisite fabric combinations for each model of the Knight. Now, it's your turn to choose.



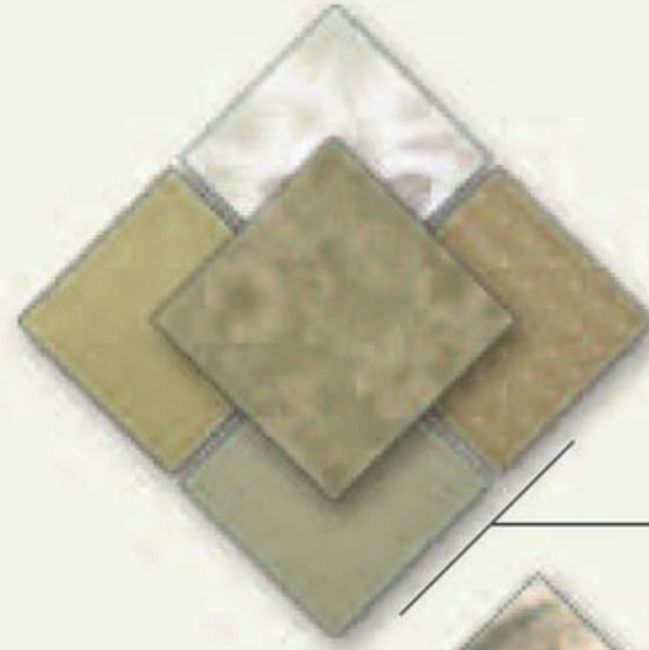
FABRIC SWATCHES

- A. *Sofa*
- B. *Carpet*
- C. *Bedsread*
- D. *Dinette Chairs*
- E. *Accent*

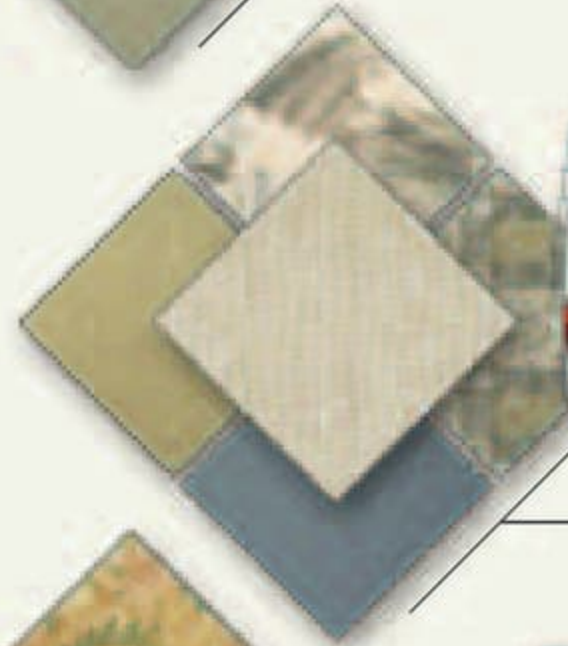


Manufactured in, not added on. 3M Scotchgard™ Carpet Stain Release is applied during the carpet manufacturing process for a higher level of protection. Dupont Teflon® soil repellent is applied to virtually all upholstery fabric during the finishing process for superior coverage.*

*Brand and application of carpet or upholstery fabric protection may vary depending on date recreational vehicle was manufactured.



GREEN MANOR



IRONWOOD TAUPE



KONA



URBAN ESCAPE



Vintage Oak



Regal Cherry



Maple



Also, as a new Monaco owner, you're entitled to our comprehensive **OWNER ADVANTAGE PROGRAM**. With this impressive roadside assistance package, Master Certified RVDA Technicians and ASE Certified Technicians are on call 24 hours a day to handle any problems you may experience with your coach. And that's not all. Members of our Owner Advantage Program also receive the following benefits: emergency roadside service, fuel delivery, tire change, battery jump start, lockout service, trip routing and maps, and much more.

You can access **MONACOCOACH.COM** night or day to take advantage of its many features. The site includes factory tours, a dealer locator function and plenty of information on Monaco products and scheduled club events. Plus, through the site, you may contact us directly at any time.



THE FAMILY ADVANTAGE.

When you purchase a coach from Monaco, you become part of an industry-leading family of companies called Monaco Coach Corporation. What does that mean for you? It means you have access to a wider array of benefits. To begin with, your coach is built by a level of expertise that could only be achieved through the teamwork and combined experience of all our companies. Like, for example, such exclusive innovations as the Roadmaster chassis — designed specifically for each individual model of our diesel coaches.

You also get the benefit of our White Glove factory inspection program, for a higher level of quality assurance and added peace of mind. And your dealer will be happy to tell you about our other innovative programs, including our Extended Care service agreements. Of course, once you're on the road, you'll have access to our nationwide network of more than 350 service facilities, meaning wherever you travel, you're never far from a friend. Ready to roll? In a 2004 Monaco, the strength of our entire family is behind you every mile of the way.



350
and growing | Service
Facilities
Nationwide



WARRANTIES

12 MONTH/24,000 MILE basic limited warranty

5 YEAR/50,000 MILE limited warranty on aluminum or steel frame structure of sidewall, roof, front and rear cap

3 YEAR/36,000 MILE limited warranty on Roadmaster chassis

See owner's manual for complete details.

As a Monaco owner, you're entitled to a free subscription to our **LIFESTYLES** magazine, giving you all the latest news on our products, club events and exciting destinations.





Also, as a new Monaco owner, you're entitled to our comprehensive **OWNER ADVANTAGE PROGRAM**. With this impressive roadside assistance package, Master Certified RVDA Technicians and ASE Certified Technicians are on call 24 hours a day to handle any problems you may experience with your coach. And that's not all. Members of our Owner Advantage Program also receive the following benefits: emergency roadside service, fuel delivery, tire change, battery jump start, lockout service, trip routing and maps, and much more.

You can access **MONACOCOACH.COM** night or day to take advantage of its many features. The site includes factory tours, a dealer locator function and plenty of information on Monaco products and scheduled club events. Plus, through the site, you may contact us directly at any time.



THE FAMILY ADVANTAGE.

When you purchase a coach from Monaco, you become part of an industry-leading family of companies called Monaco Coach Corporation. What does that mean for you? It means you have access to a wider array of benefits. To begin with, your coach is built by a level of expertise that could only be achieved through the teamwork and combined experience of all our companies. Like, for example, such exclusive innovations as the Roadmaster chassis — designed specifically for each individual model of our diesel coaches.

You also get the benefit of our White Glove factory inspection program, for a higher level of quality assurance and added peace of mind. And your dealer will be happy to tell you about our other innovative programs, including our Extended Care service agreements. Of course, once you're on the road, you'll have access to our nationwide network of more than 350 service facilities, meaning wherever you travel, you're never far from a friend. Ready to roll? In a 2004 Monaco, the strength of our entire family is behind you every mile of the way.



350 and growing
Service Facilities Nationwide



WARRANTIES

12 MONTH/24,000 MILE basic limited warranty

5 YEAR/50,000 MILE limited warranty on aluminum or steel frame structure of sidewall, roof, front and rear cap


3 YEAR/36,000 MILE limited warranty on Roadmaster chassis

See owner's manual for complete details.

As a Monaco owner, you're entitled to a free subscription to our **LIFESTYLES** magazine, giving you all the latest news on our products, club events and exciting destinations.



THE SHINE OF SUCCESS.




It's like a milestone you breeze past without noticing. A turning point where everything changes. Where suddenly, the things you've achieved outnumber the things you've dreamed of. In short, you've arrived. And now that you're here, you can fully appreciate the quality experience of a Monaco coach. As a perfectionist, it's a level of performance and luxury that you recognize instantly. And as a freedom-lover, it's your gateway to endless possibilities. This is the starting point for a whole new journey. Because once you catch a glimpse of yourself in the mirror of a new Monaco, you'll see once and for all just how far you've come.



91320 Industrial Way, Coburg, OR 97408 800 634-0855 606 Nelson's Pkwy., Wakarusa, IN 46573 800 650-7337

Monaco Coach Corporation is traded on the NYSE under the listing MNC. 0903 NPN:BROMKNT

THE SHINE OF SUCCESS.



It's like a milestone you breeze past without noticing. A turning point where everything changes. Where suddenly, the things you've achieved outnumber the things you've dreamed of. In short, you've arrived. And now that you're here, you can fully appreciate the quality experience of a Monaco coach. As a perfectionist, it's a level of performance and luxury that you recognize instantly. And as a freedom-lover, it's your gateway to endless possibilities. This is the starting point for a whole new journey. Because once you catch a glimpse of yourself in the mirror of a new Monaco, you'll see once and for all just how far you've come.



91320 Industrial Way, Coburg, OR 97408 800 634-0855 606 Nelson's Pkwy., Wakarusa, IN 46573 800 650-7337

Monaco Coach Corporation is traded on the NYSE under the listing MNC. 0903 NPN:BROMKNT