



04 MONARCH SE

WELCOME ABOARD.





04 MONARCH SE

WELCOME ABOARD.









JOIN THE FAMILY, AND YOU'LL RIDE ON THE STRENGTH OF OUR ENTIRE COMPANY.

Welcome to Monaco — welcome to the 2004 Monarch SE. If this is your first look at a Monaco gas coach, we'd like to show you a few of the highlights designed to give you the best possible RV experience. Inside the coach, you're greeted by your choice of three beautiful color schemes and three styles of gorgeous woodwork. Our designers have put together a sophisticated combination of details, including crown molding, wood slide-out fascia, decorative wall board and raised panel cabinet doors with brass hardware. And to help keep your coach looking great for years to come, we've added new carpeting with Scotchgard™ stain release pad, as well as Teflon® fabric protection.



① *The 34SBD **KITCHEN/LIVING ROOM** in Paradise Bay with Vintage Oak woodwork.*

② The newly styled automotive dash features a beige **GRID INSTRUMENT PANEL** and **TWO-TONE VINYL**. Other conveniences you'll enjoy include a **FRONT PRIVACY DRAPE** with tie backs, a **CENTER CONSOLE** with **SNACK TRAY**, **CO-PILOT SIDE CUP HOLDERS** with **MAGAZINE RACK**, and a **DASH WORKSTATION**.

③ The remarkable kitchen area welcomes you with style and conveniences. This year, we've added handy details throughout, such as a **PANTRY** with **ADJUSTABLE SHELVES** (N/A on the 32PBD), **COUNTERTOP EXTENSIONS** (on the 34PDT and 36PED), and **OVERHEAD CABINETS** with adjustable shelf. Other highlights include **TOE KICKS** in the base cabinets and **LINOLEUM FLOORING** in the kitchen and entryway (Wilsonart® plank flooring is standard on the 34PDT).



JOIN THE FAMILY, AND YOU'LL RIDE ON THE STRENGTH OF OUR ENTIRE COMPANY.

Welcome to Monaco — welcome to the 2004 Monarch SE. If this is your first look at a Monaco gas coach, we'd like to show you a few of the highlights designed to give you the best possible RV experience. Inside the coach, you're greeted by your choice of three beautiful color schemes and three styles of gorgeous woodwork. Our designers have put together a sophisticated combination of details, including crown molding, wood slide-out fascia, decorative wall board and raised panel cabinet doors with brass hardware. And to help keep your coach looking great for years to come, we've added new carpeting with Scotchgard™ stain release pad, as well as Teflon® fabric protection.



① *The 34SBD **KITCHEN/LIVING ROOM** in Paradise Bay with Vintage Oak woodwork.*

② The newly styled automotive dash features a beige **GRID INSTRUMENT PANEL** and **TWO-TONE VINYL**. Other conveniences you'll enjoy include a **FRONT PRIVACY DRAPE** with tie backs, a **CENTER CONSOLE** with **SNACK TRAY**, **CO-PILOT SIDE CUP HOLDERS** with **MAGAZINE RACK**, and a **DASH WORKSTATION**.

③ The remarkable kitchen area welcomes you with style and conveniences. This year, we've added handy details throughout, such as a **PANTRY** with **ADJUSTABLE SHELVES** (N/A on the 32PBD), **COUNTERTOP EXTENSIONS** (on the 34PDT and 36PED), and **OVERHEAD CABINETS** with adjustable shelf. Other highlights include **TOE KICKS** in the base cabinets and **LINOLEUM FLOORING** in the kitchen and entryway (Wilsonart® plank flooring is standard on the 34PDT).

SIMPLY PUT, THIS IS A GREAT PLACE TO LIVE.

The Monarch SE gives you a wide range of versatile double and triple slide-out floorplans, including an exciting bath-and-a-half model. You'll enjoy mealtimes at the arched back wood booth dinette with sliding tabletop and storage drawers — or, the freestanding dinette with chairs and a wall cabinet, standard on the 34PDT and 36PED, and optional on all others. Over the cockpit, you can see the 27" stereo color TV (on most floorplans), which can be accompanied by an optional VCR, DVD player and digital satellite system prep. Another option allows you to have the TV and VCR wired through the ceiling speakers, for superior audio.

- ① A beautiful **BEVELED MIRROR** reflects the 34 SBD bedroom's warm ambience. A 19" color TV with remote control is available as an option. Shown are Paradise Bay fabrics with Vintage Oak woodwork.
- ② A **QUEEN BED WITH NIGHTSTANDS** is standard in the Monarch SE. And the attractive bedspread comes with two decorator pillows. Shown here is the 34SBD in Chateau Stone with Vintage Oak.
- ③ Our optional **HIDE-A-BED** is a cozy sofa by day and a roomy double bed by night, adding sleeping space and increasing the versatility of your coach's floorplan.



SIMPLY PUT, THIS IS A GREAT PLACE TO LIVE.

The Monarch SE gives you a wide range of versatile double and triple slide-out floorplans, including an exciting bath-and-a-half model. You'll enjoy mealtimes at the arched back wood booth dinette with sliding tabletop and storage drawers — or, the freestanding dinette with chairs and a wall cabinet, standard on the 34PDT and 36PED, and optional on all others. Over the cockpit, you can see the 27" stereo color TV (on most floorplans), which can be accompanied by an optional VCR, DVD player and digital satellite system prep. Another option allows you to have the TV and VCR wired through the ceiling speakers, for superior audio.

- ① A beautiful **BEVELED MIRROR** reflects the 34 SBD bedroom's warm ambience. A 19" color TV with remote control is available as an option. Shown are Paradise Bay fabrics with Vintage Oak woodwork.
- ② A **QUEEN BED WITH NIGHTSTANDS** is standard in the Monarch SE. And the attractive bedspread comes with two decorator pillows. Shown here is the 34SBD in Chateau Stone with Vintage Oak.
- ③ Our optional **HIDE-A-BED** is a cozy sofa by day and a roomy double bed by night, adding sleeping space and increasing the versatility of your coach's floorplan.

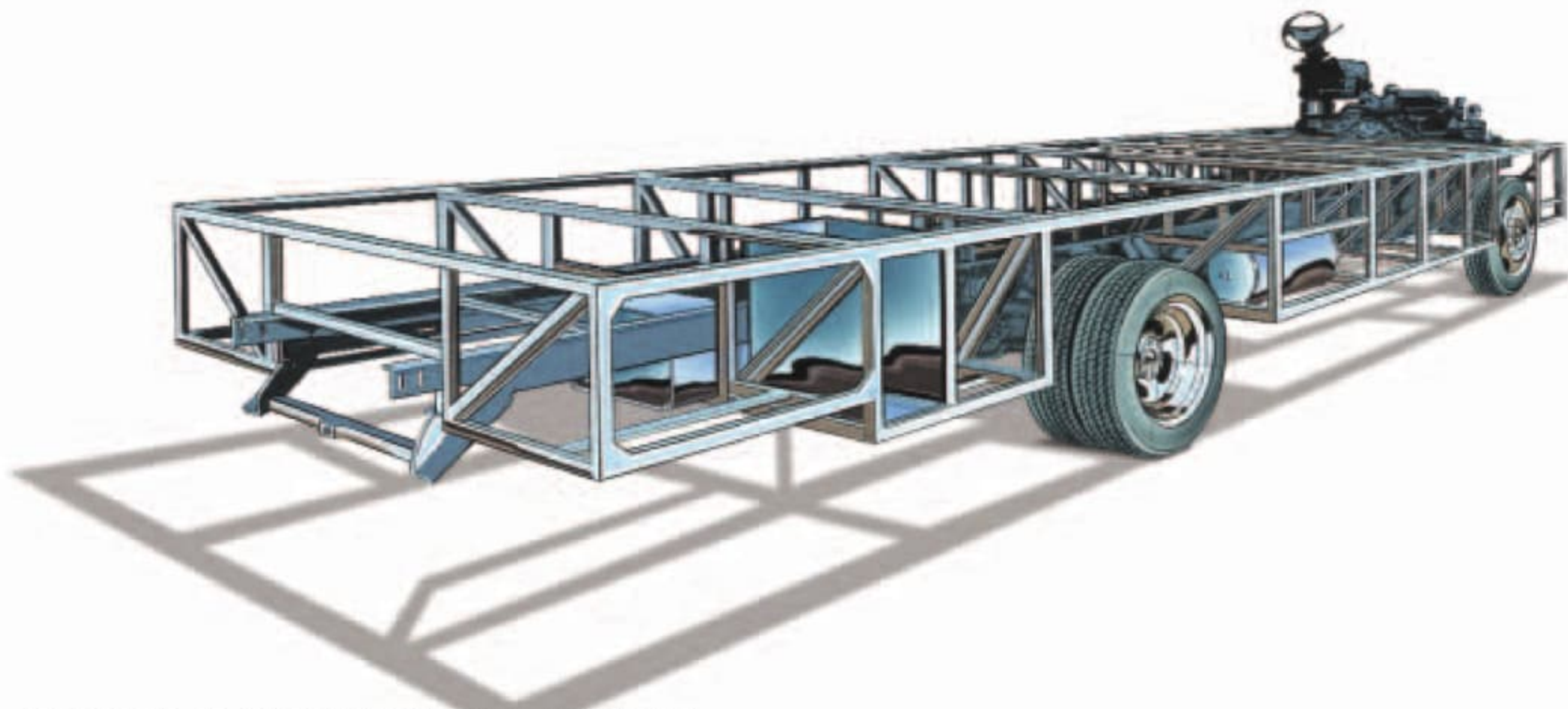






OUR RECIPE FOR COMFORT AND SAFETY.

It takes dozens of meticulous details to create a coach that's worthy of the name Monaco. And each of them is held up to the highest standards while being constantly re-evaluated — both for quality and for innovation. For us, that means setting the bar higher and higher with every year. And for you, it means your Monaco coach will always be a step ahead of the rest. If you'd like to learn more, a dealer near you will be happy to show you firsthand the details that add up to the Monaco difference. Or, visit our website at www.monacocoach.com

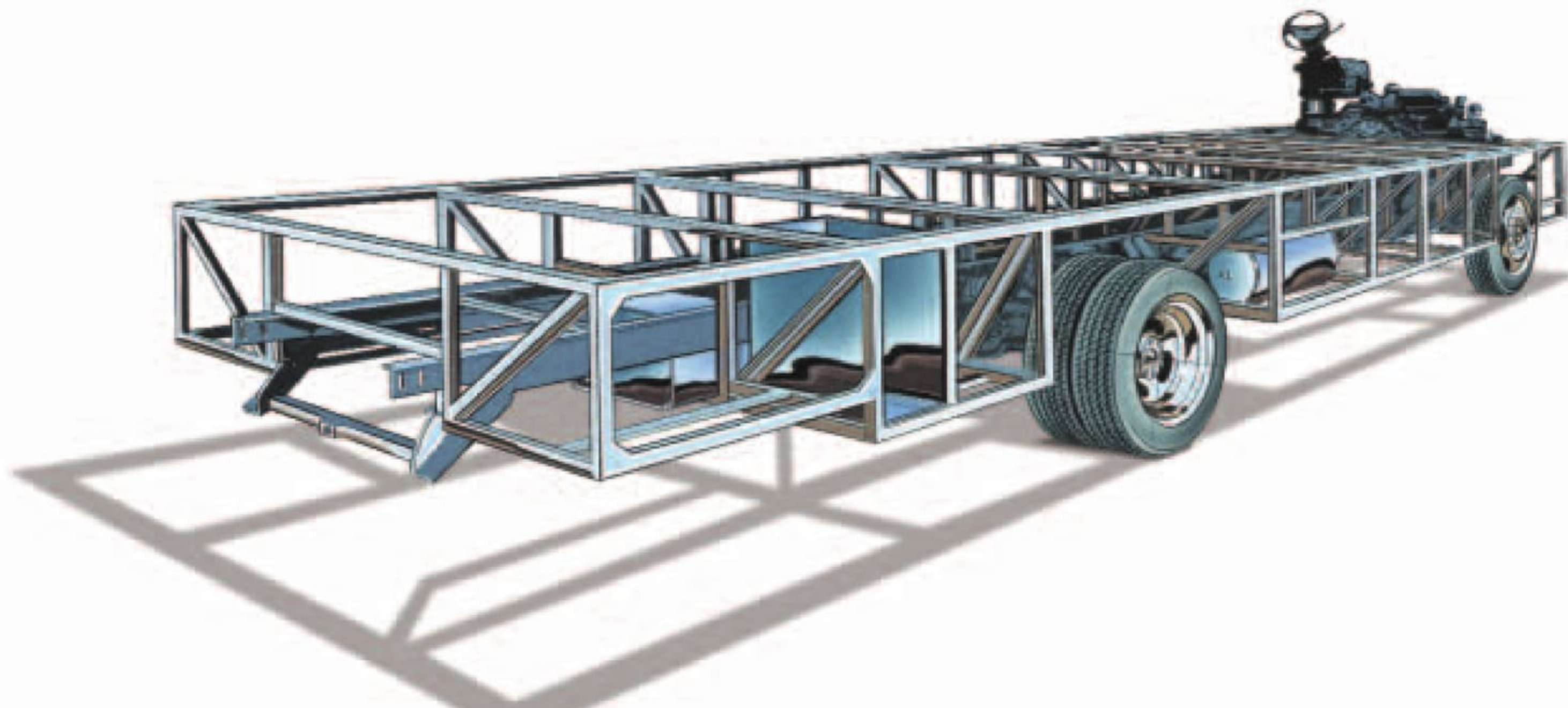


MONARCH SE SMARTSTRUCTURE FEATURES:

- The SmartStructure provides superior strength, balance and weight distribution while enabling Monaco engineers to make maximum use of space. SmartStructure is custom built to each floorplan and fully integrated with your choice of Workhorse or Ford chassis.
- A hitch receiver with connector provides plentiful towing capacity.
- Propane tank, water heater and batteries are accessible for easy use and service.
- The fully welded steel truss system provides a stronger platform than other types of construction and easy access to electrical, plumbing and vehicle components for easy maintenance.
- The SmartStructure technology allows for more under-the-coach storage, including easy access with the EasyStor slide-out system.
- Anti-lock brakes help you stay in control.

OUR RECIPE FOR COMFORT AND SAFETY.

It takes dozens of meticulous details to create a coach that's worthy of the name Monaco. And each of them is held up to the highest standards while being constantly re-evaluated — both for quality and for innovation. For us, that means setting the bar higher and higher with every year. And for you, it means your Monaco coach will always be a step ahead of the rest. If you'd like to learn more, a dealer near you will be happy to show you firsthand the details that add up to the Monaco difference. Or, visit our website at www.monacocoach.com



MONARCH SE SMARTSTRUCTURE FEATURES:

- The SmartStructure provides superior strength, balance and weight distribution while enabling Monaco engineers to make maximum use of space. SmartStructure is custom built to each floorplan and fully integrated with your choice of Workhorse or Ford chassis.
- A hitch receiver with connector provides plentiful towing capacity.
- Propane tank, water heater and batteries are accessible for easy use and service.
- The fully welded steel truss system provides a stronger platform than other types of construction and easy access to electrical, plumbing and vehicle components for easy maintenance.
- The SmartStructure technology allows for more under-the-coach storage, including easy access with the EasyStor slide-out system.
- Anti-lock brakes help you stay in control.

ROOF LAYERS: (TOP TO BOTTOM)

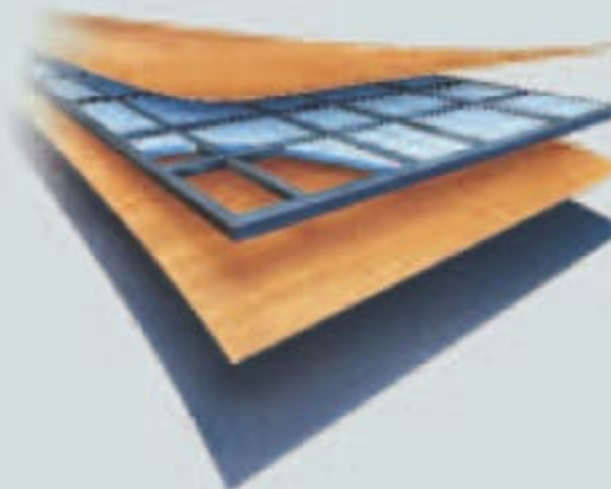
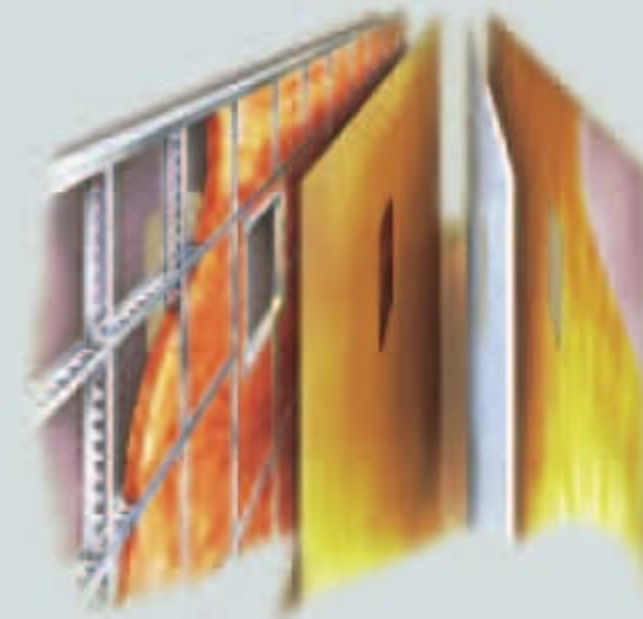
- a. *Peaked aluminum roof*
- b. *Luaun backing*
- c. *Thick, tapered bead foam insulation*
- d. *Aluminum double I-beam superstructure*
- ① e. *Vapor barrier*
- f. *Structure foam: thermal insulative barrier*
- g. *1/2" bead foam insulation*
- h. *Foam padding for extra insulation*
- i. *Padded vinyl ceiling*

WALL LAYERS: (LEFT TO RIGHT)

- a. *Smooth .063 aluminun*
(gel coat fiberglass is optional)
- b. *Interlocking C-Channel filled with*
② *1-1/2" fiberglass insulation glued in place*
so it doesn't sag or leave spaces uninsulated
- c. *Vapor barrier*
- d. *Bead foam adds comfort, saves energy*
and provides a thermal insulative barrier
- e. *Interior paneling*

FLOOR CONSTRUCTION: (BOTTOM TO TOP)

- a. *Darco*
- b. *Luaun*
- ③ c. *Blue foam*
- d. *1-1/2" steel tube*
- e. *5/8" Structurwood™*



ROOF LAYERS: (TOP TO BOTTOM)

- a. Peaked aluminum roof
- b. Luaun backing
- c. Thick, tapered bead foam insulation
- d. Aluminum double I-beam superstructure filled with fiberglass insulation
- e. Vapor barrier
- f. Structure foam: thermal insulative barrier
- g. 1/2" bead foam insulation
- h. Foam padding for extra insulation
- i. Padded vinyl ceiling

WALL LAYERS: (LEFT TO RIGHT)

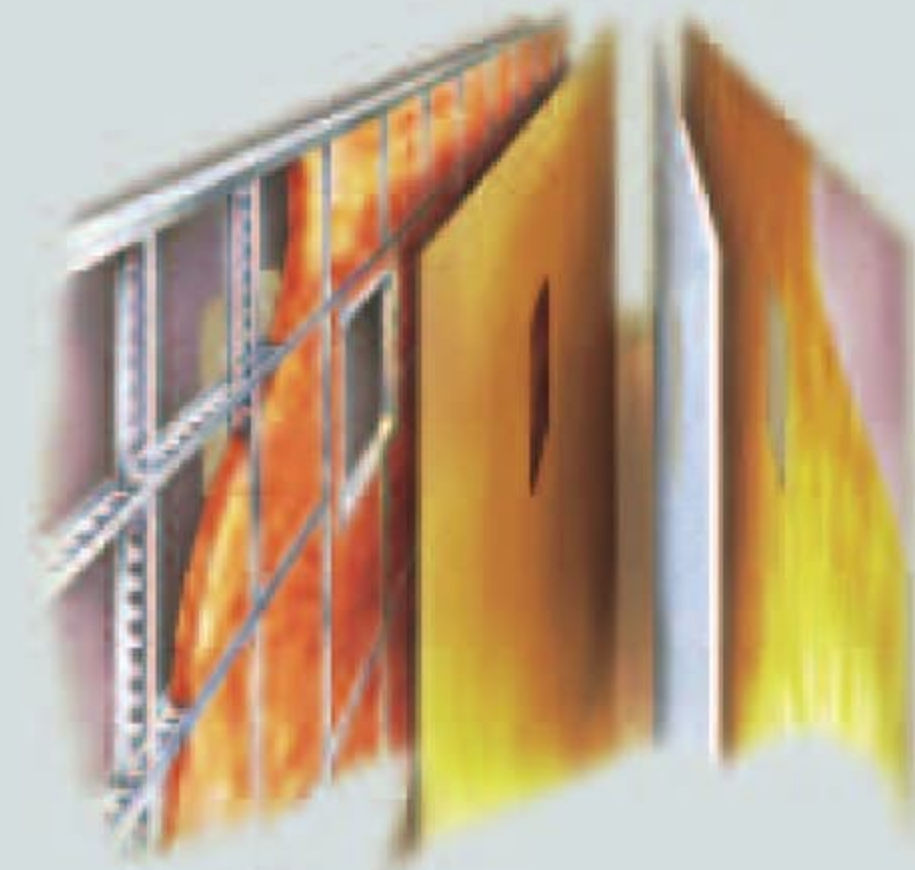
- a. Smooth .063 aluminum (gel coat fiberglass is optional)
- b. Interlocking C-Channel filled with 1-1/2" fiberglass insulation glued in place so it doesn't sag or leave spaces uninsulated
- c. Vapor barrier
- d. Bead foam adds comfort, saves energy and provides a thermal insulative barrier
- e. Interior paneling

FLOOR CONSTRUCTION: (BOTTOM TO TOP)

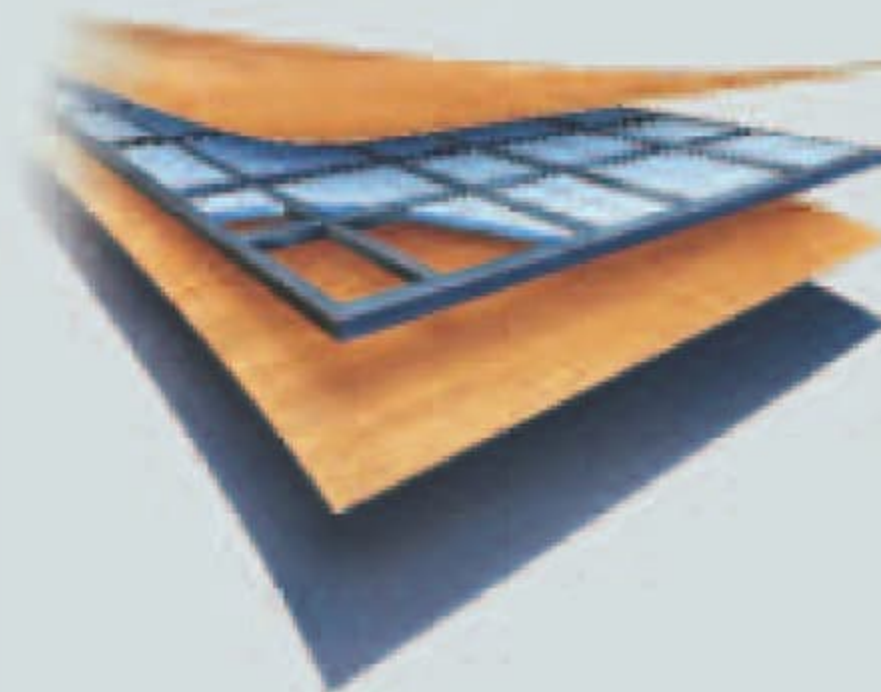
- a. Darco
- b. Luaun
- c. Blue foam
- d. 1-1/2" steel tube
- e. 5/8" Structurwood™



①



②



③

EXTERIOR HIGHLIGHTS.

Each Monaco coach is designed to turn heads wherever you go, with sleek, contemporary styling and a distinctive appearance that reflects the quality you'll find throughout the coach. You'll appreciate the durable exterior of the smooth aluminum walls — or, if you prefer, the optional gel coat fiberglass walls — and the painted mask and skirt with vinyl graphics.

- ① Our exclusive **SLIDE-OUT** design is the strongest and most reliable you'll find anywhere. It features our exclusive multi-layer construction to give you maximum insulation and to reduce the chance of warping, twisting or shifting.
- ② The front of the coach features a new **MOLDED FIBERGLASS CAP** with **INTEGRATED BUMPER** and newly styled headlights with turn signals.
- ③ The Monarch SE features our exclusive **EASYSTOR COMPARTMENTS** that move out with the slide-outs for easy loading and unloading. In addition, our new **STREAMLINED BAGGAGE DOORS** include secure, easy-to-open integrated single-handle latches.



①



②



③

EXTERIOR HIGHLIGHTS.

Each Monaco coach is designed to turn heads wherever you go, with sleek, contemporary styling and a distinctive appearance that reflects the quality you'll find throughout the coach. You'll appreciate the durable exterior of the smooth aluminum walls — or, if you prefer, the optional gel coat fiberglass walls — and the painted mask and skirt with vinyl graphics.

- ① Our exclusive **SLIDE-OUT** design is the strongest and most reliable you'll find anywhere. It features our exclusive multi-layer construction to give you maximum insulation and to reduce the chance of warping, twisting or shifting.
- ② The front of the coach features a new **MOLDED FIBERGLASS CAP** with **INTEGRATED BUMPER** and newly styled headlights with turn signals.
- ③ The Monarch SE features our exclusive **EASYSTOR COMPARTMENTS** that move out with the slide-outs for easy loading and unloading. In addition, our new **STREAMLINED BAGGAGE DOORS** include secure, easy-to-open integrated single-handle latches.



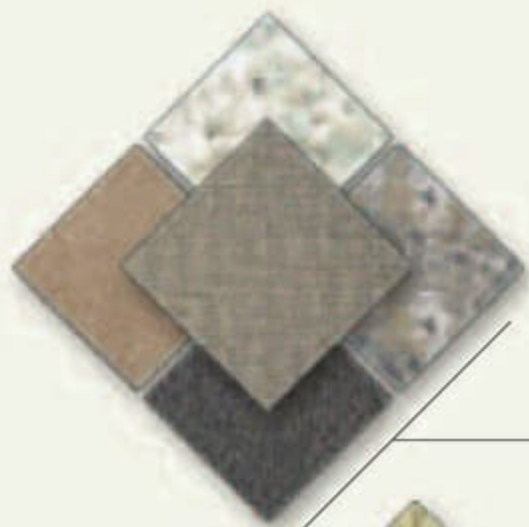
①



②



③



CHATEAU STONE



PARADISE BAY



VALLEY GLEN



Vintage Oak



Regal Cherry

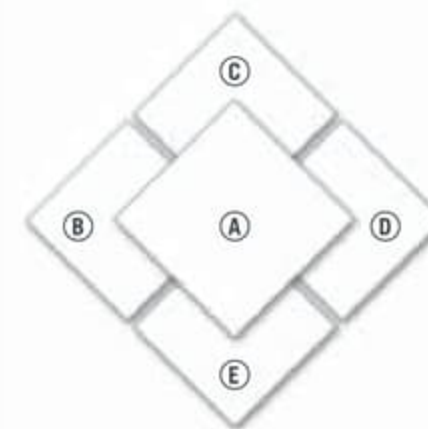


Maple

In addition, Wilsonart® plank flooring is optional in the kitchen and bathroom, in a selection of styles to match your choice of woodwork.

EXTERIOR COLORS, FABRICS AND WOODS

For 2004, our designers have selected exquisite fabric combinations for each model of the Monarch SE. Now, it's your turn to choose.



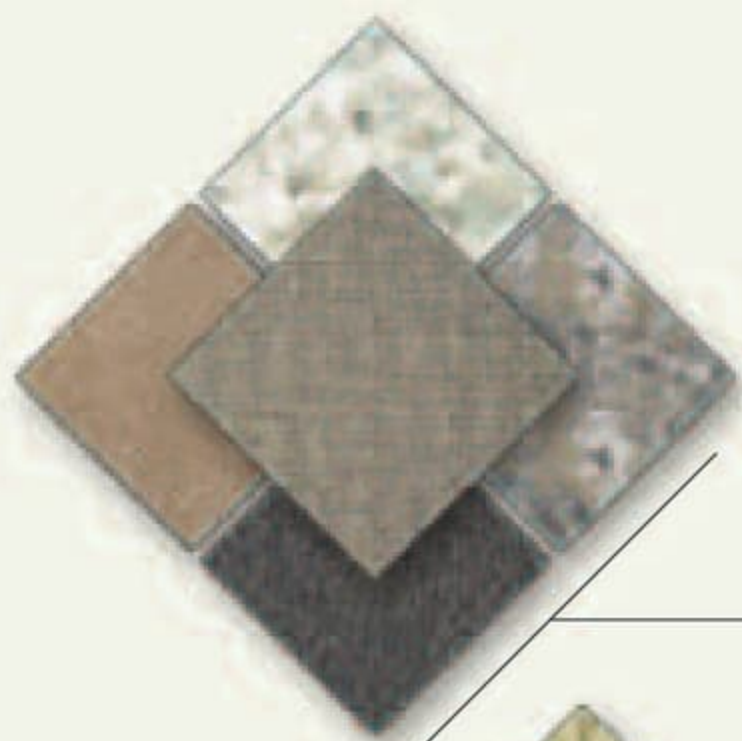
FABRIC SWATCHES

- A. Sofa
- B. Carpet
- C. Bedspread
- D. Dinette Chairs
- E. Accent



Manufactured in, not added on. 3M Scotchgard™ Carpet Stain Release is applied during the carpet manufacturing process for a higher level of protection. Dupont Teflon® soil repellent is applied to virtually all upholstery fabric during the finishing process for superior coverage.*

*Brand and application of carpet or upholstery fabric protection may vary depending on date recreational vehicle was manufactured.



CHATEAU STONE



PARADISE BAY



VALLEY GLEN



Vintage Oak



Regal Cherry

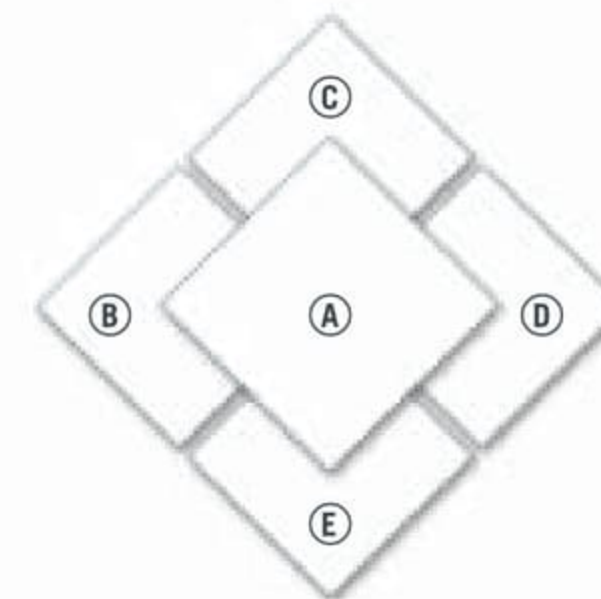


Maple

In addition, Wilsonart® plank flooring is optional in the kitchen and bathroom, in a selection of styles to match your choice of woodwork.

EXTERIOR COLORS, FABRICS AND WOODS

For 2004, our designers have selected exquisite fabric combinations for each model of the Monarch SE. Now, it's your turn to choose.



FABRIC SWATCHES

- A. Sofa
- B. Carpet
- C. Bedspread
- D. Dinette Chairs
- E. Accent

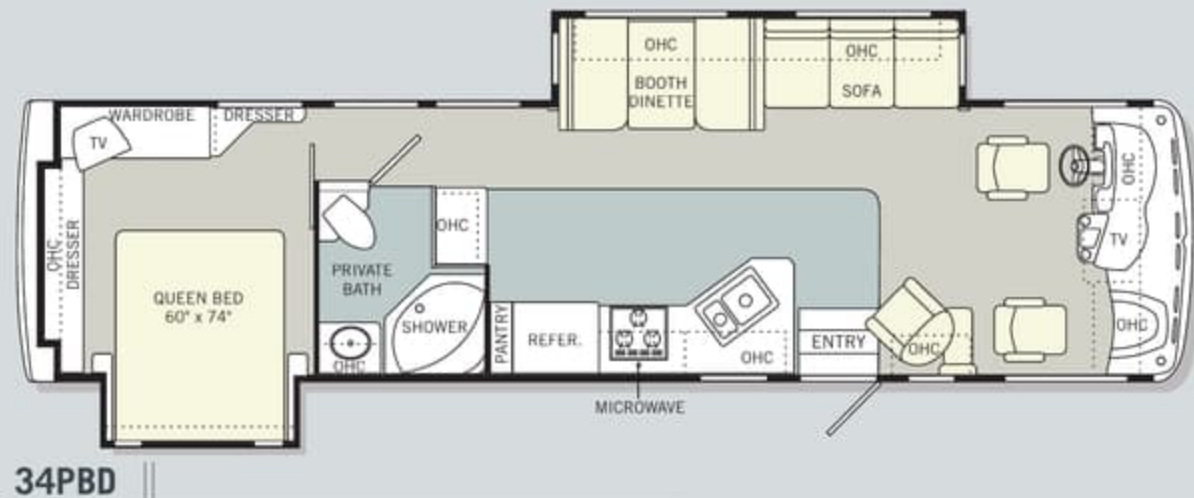
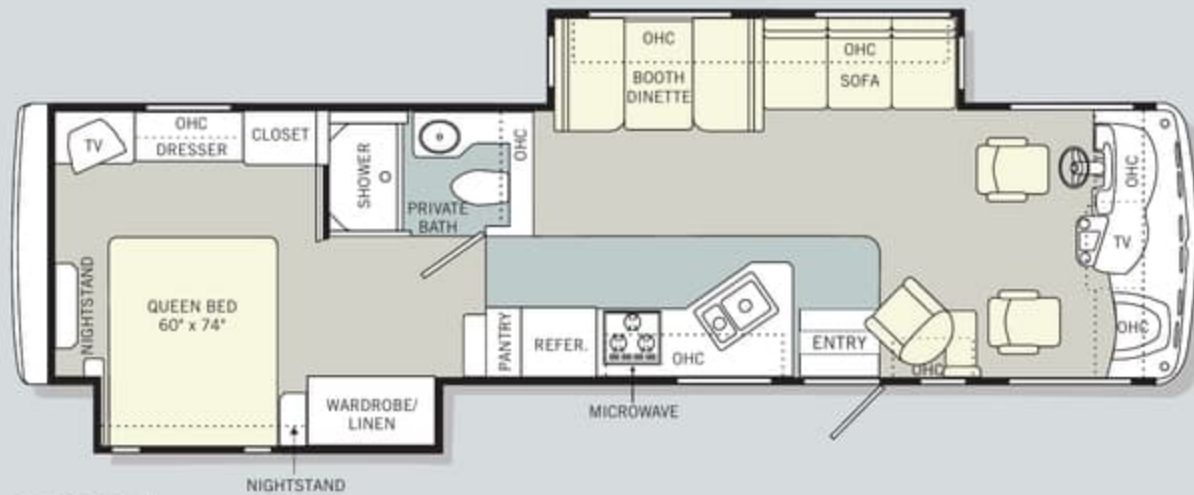
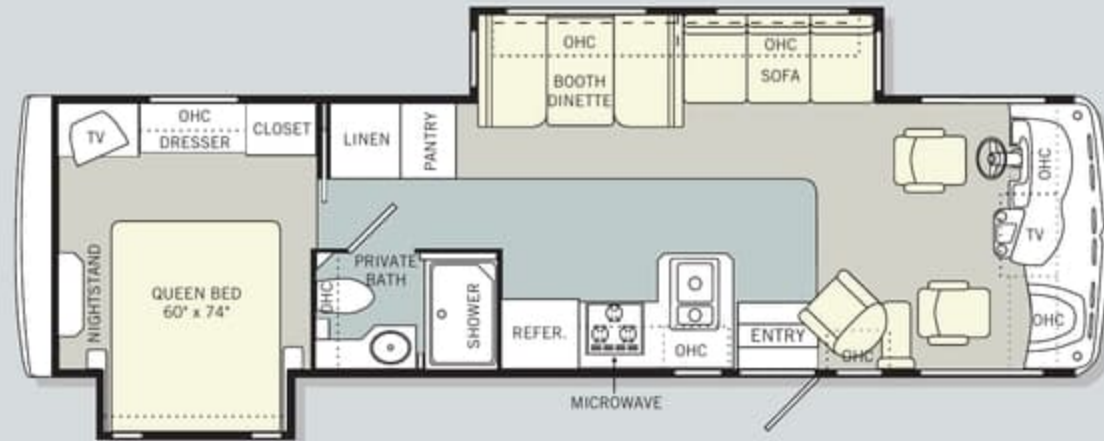


Manufactured in, not added on. 3M Scotchgard™ Carpet Stain Release is applied during the carpet manufacturing process for a higher level of protection. Dupont Teflon® soil repellent is applied to virtually all upholstery fabric during the finishing process for superior coverage.*

*Brand and application of carpet or upholstery fabric protection may vary depending on date recreational vehicle was manufactured.

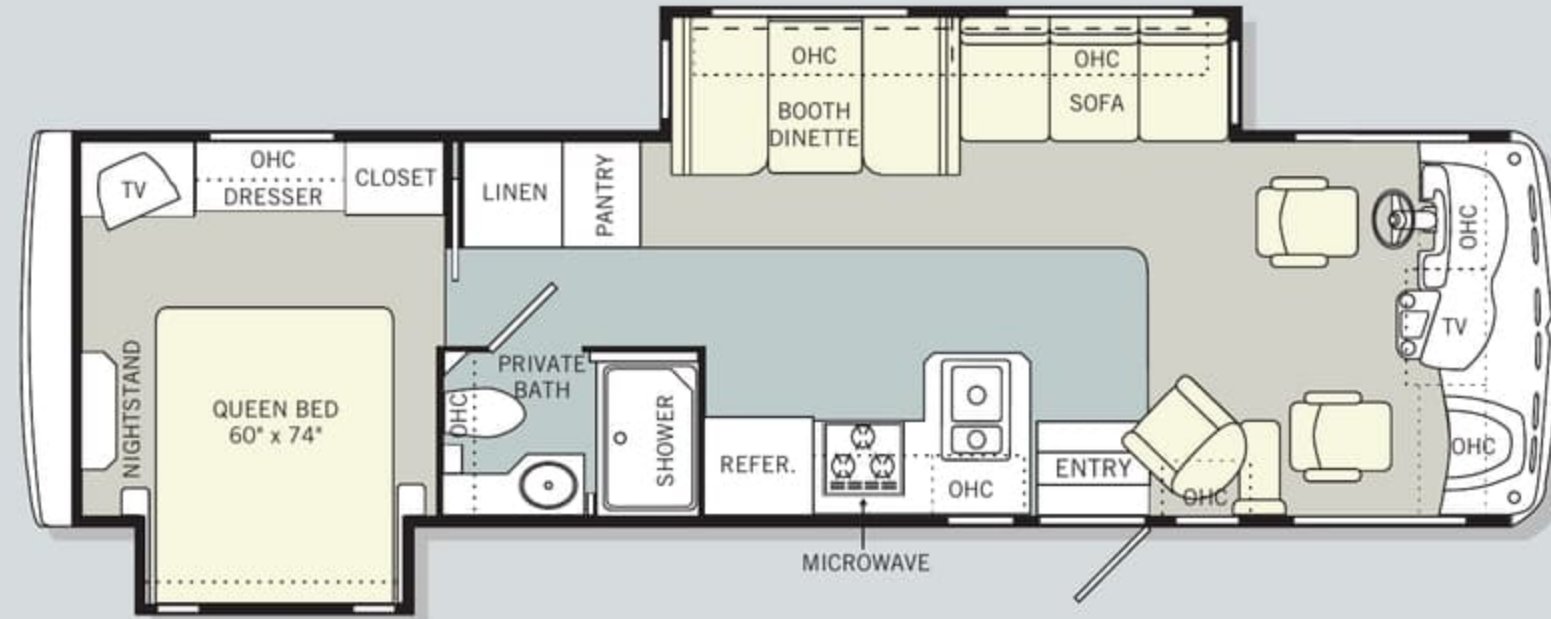
04 FLOORPLANS

Monaco is proud to offer you a wide range of floorplans to suit your lifestyle. As you can see here, you have numerous optional features from which to choose.

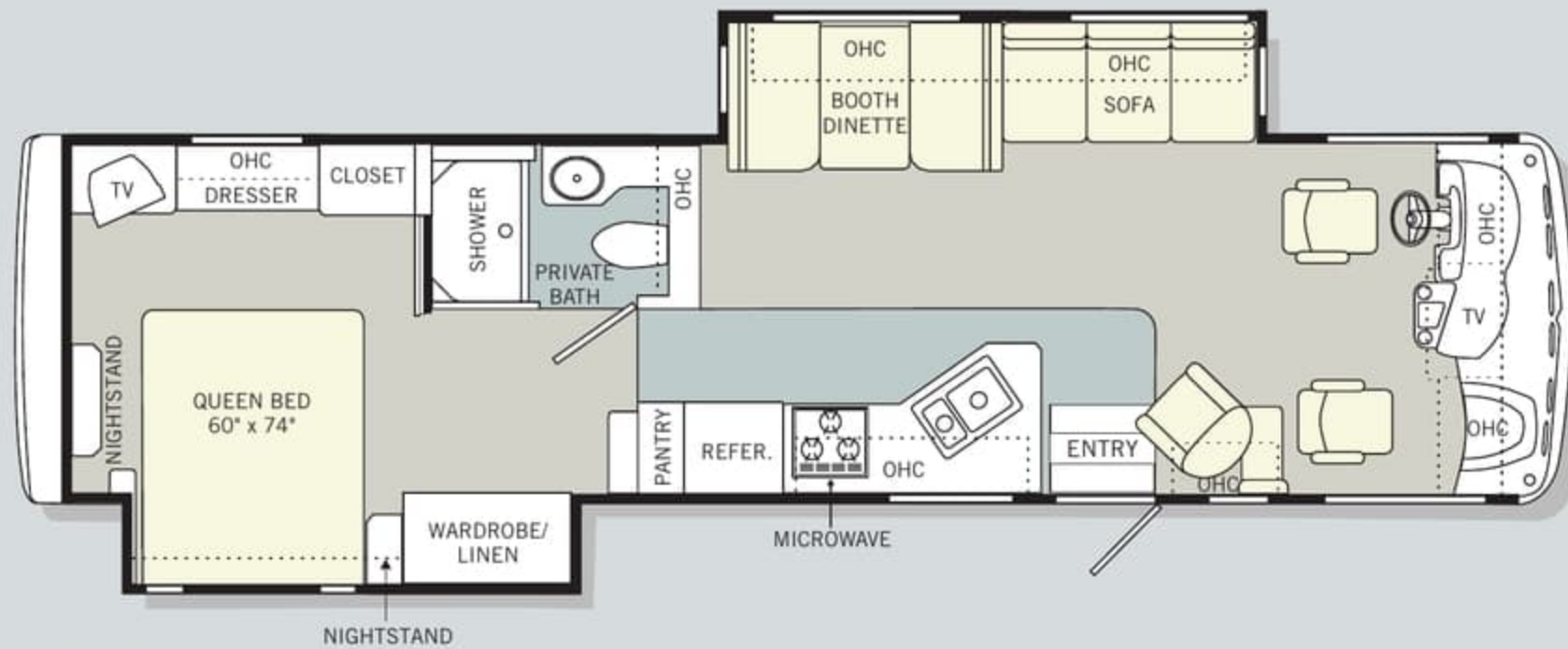


04 FLOORPLANS

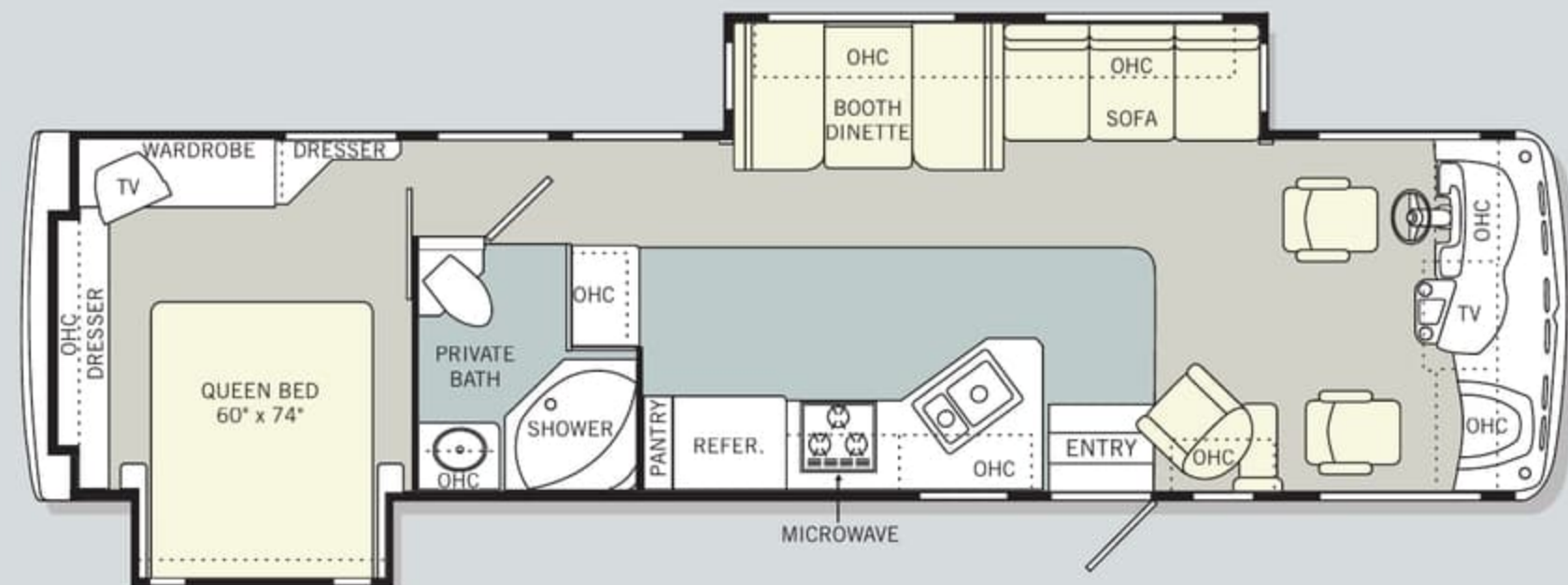
Monaco is proud to offer you a wide range of floorplans to suit your lifestyle. As you can see here, you have numerous optional features from which to choose.



32PBD



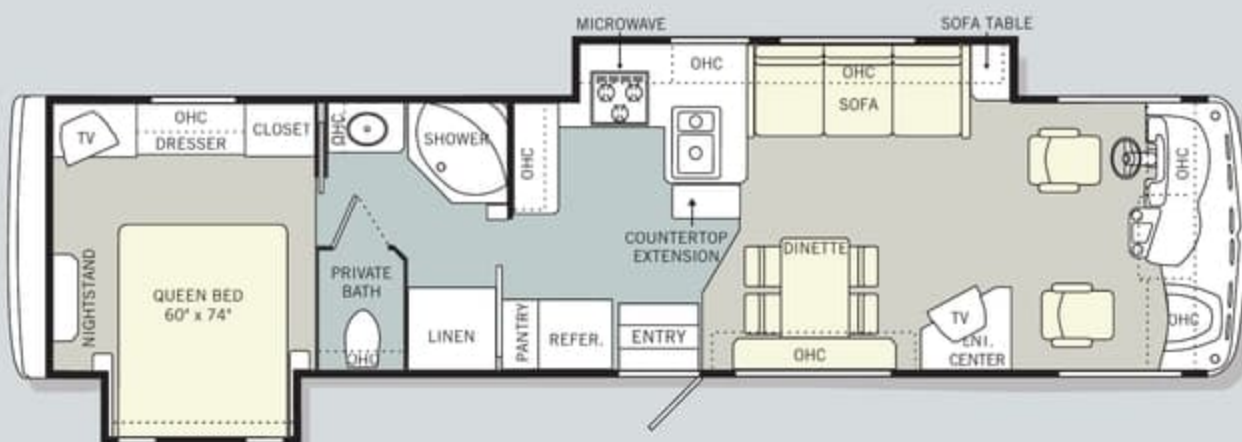
34SBD



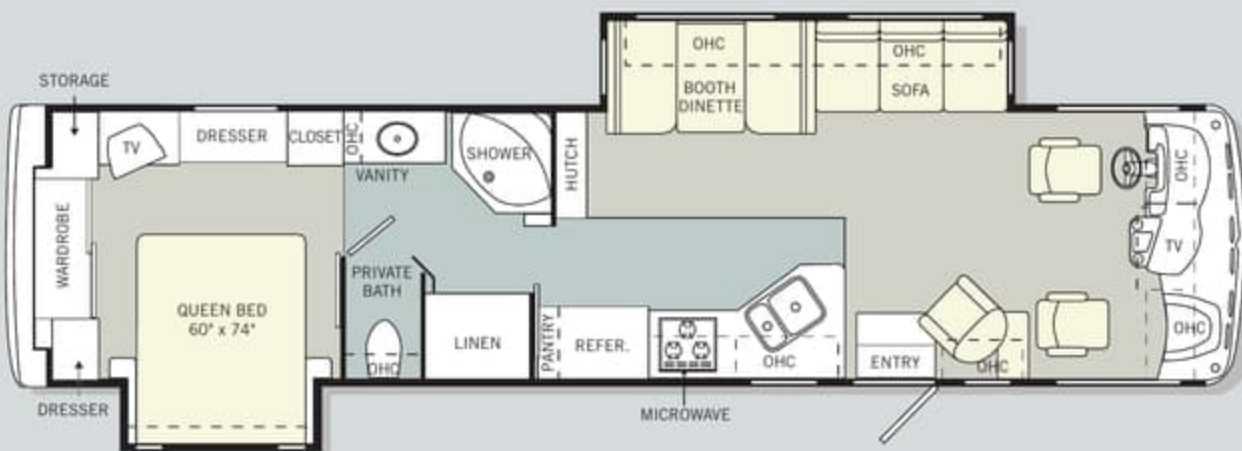
34PBD



34PDT



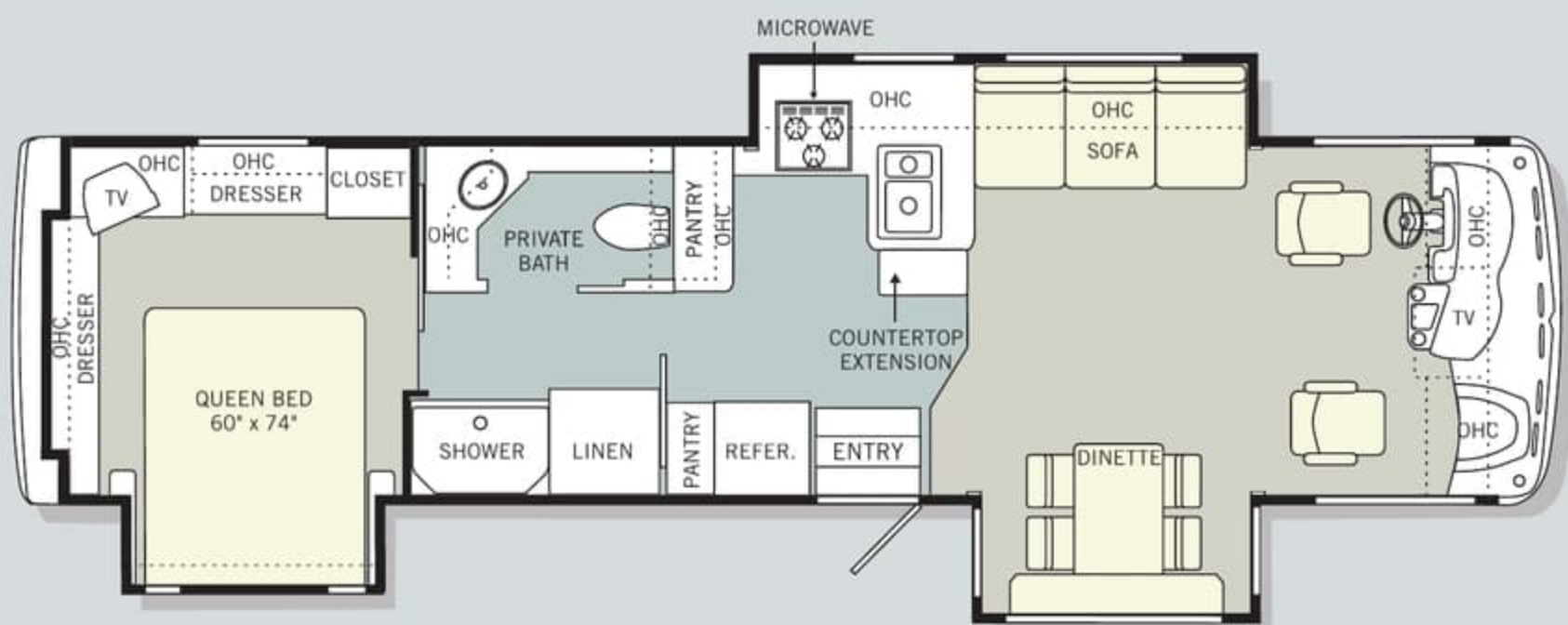
36PED



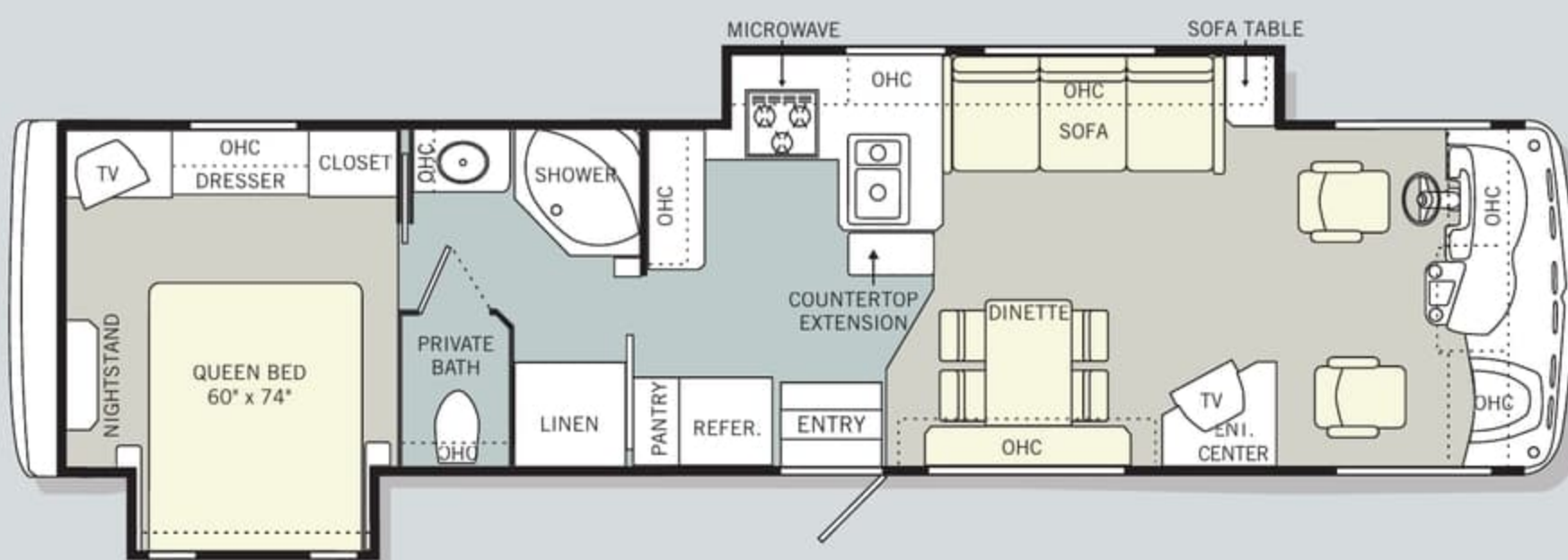
36WDD



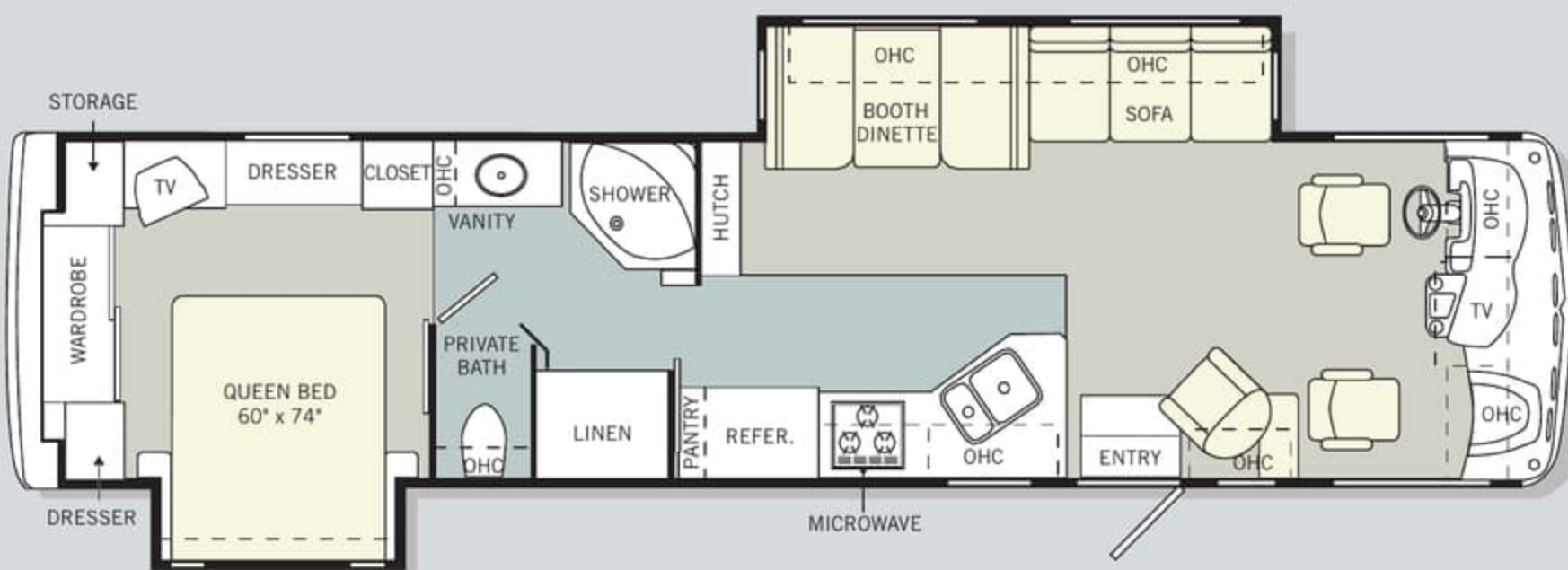
Find all the latest product
news and updates online:
monacocoach.com



34PDT



36PED



36WDD



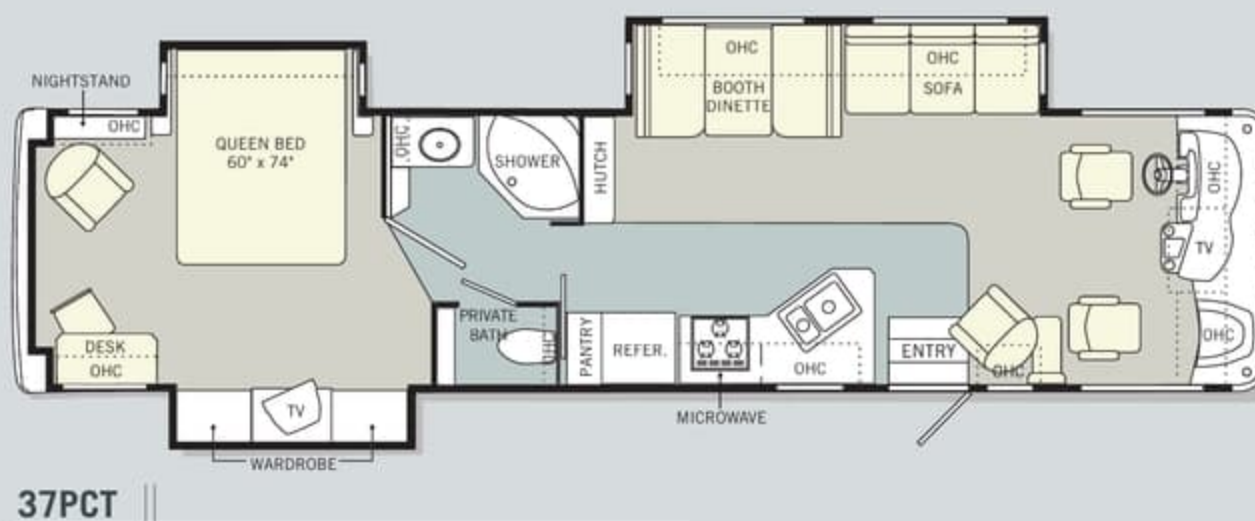
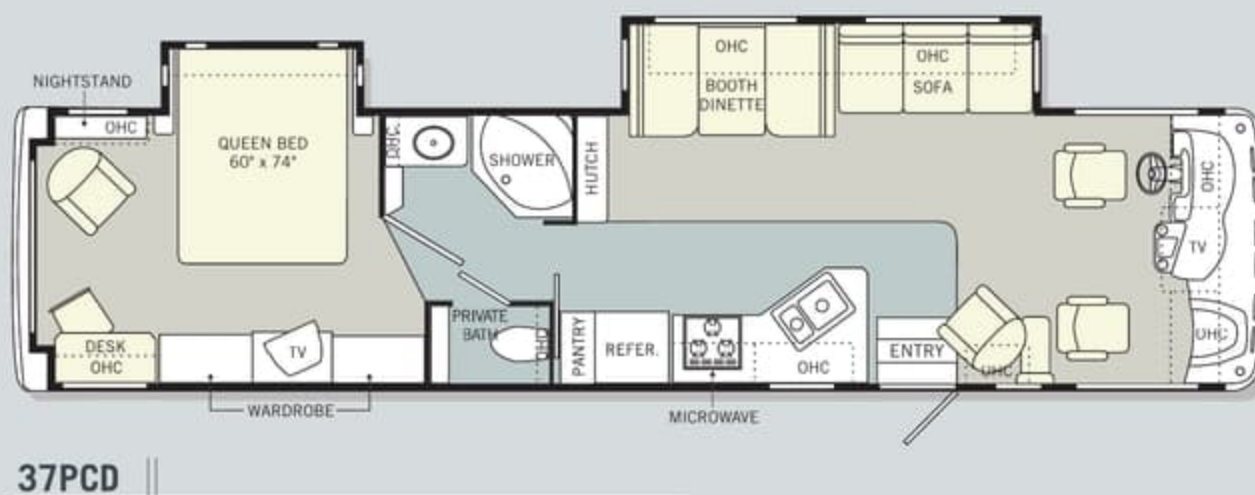
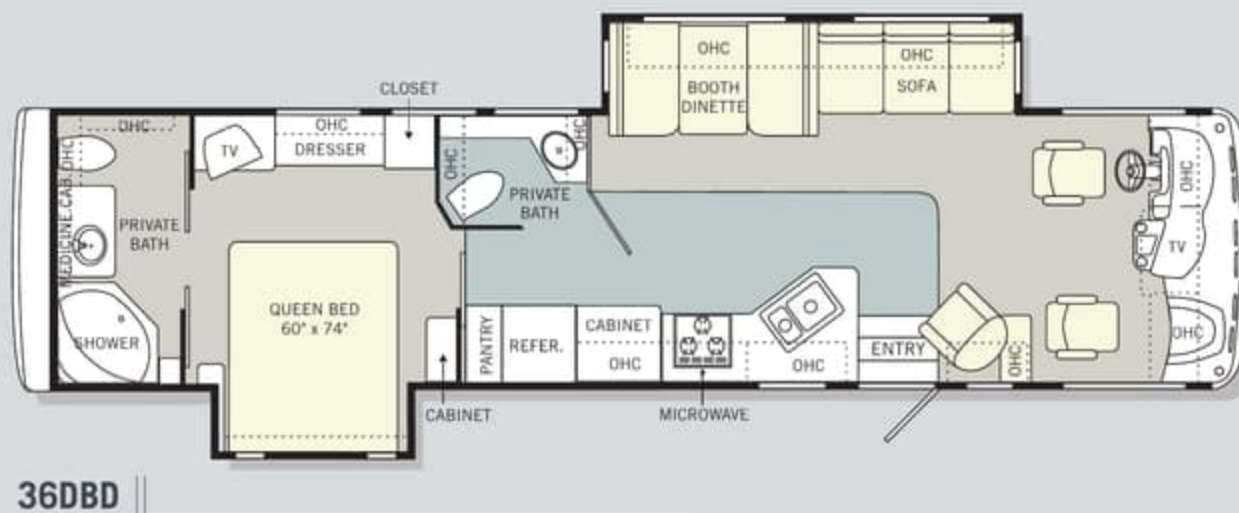
Find all the latest product news and updates online:
monacocoach.com

04 FLOORPLANS, CONTINUED

Each year, our designers work to find new ways to maximize your living area and create valuable storage space.



Find all the latest product
news and updates online:
monacocoach.com

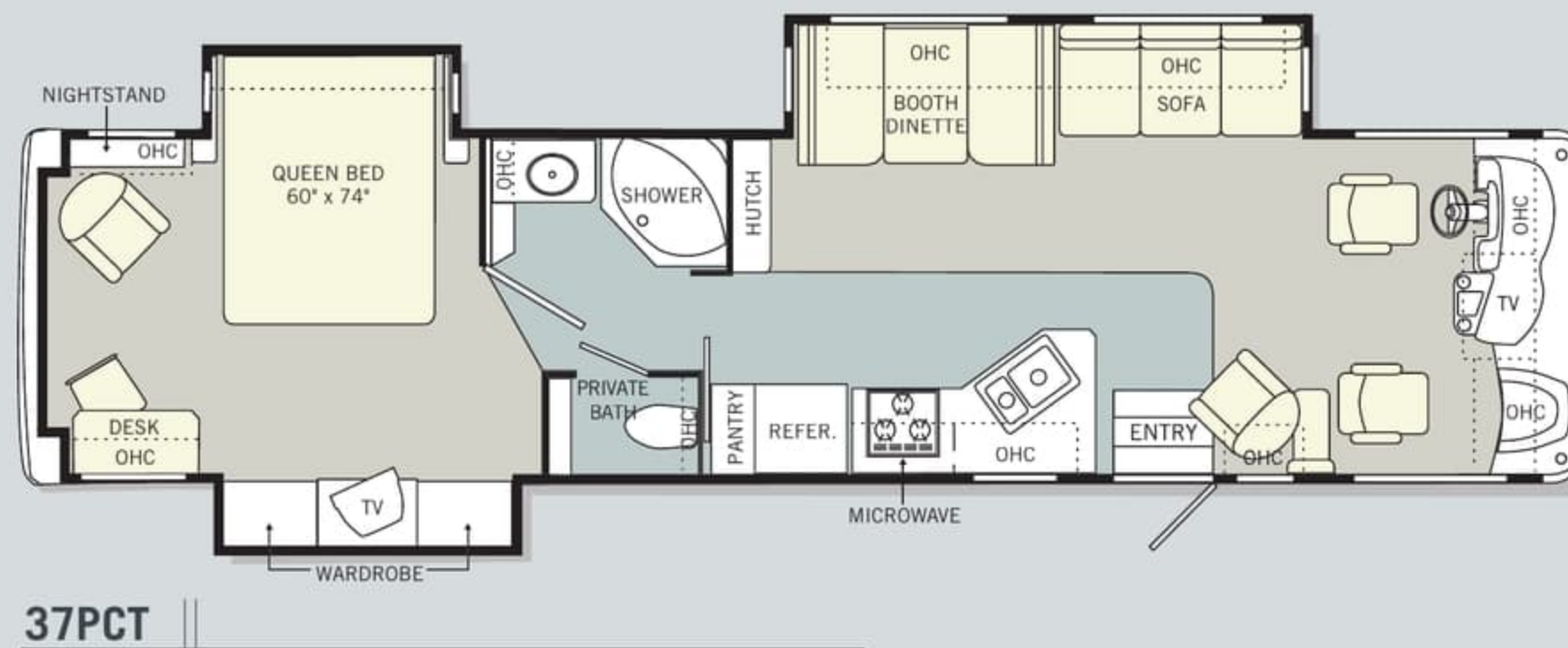
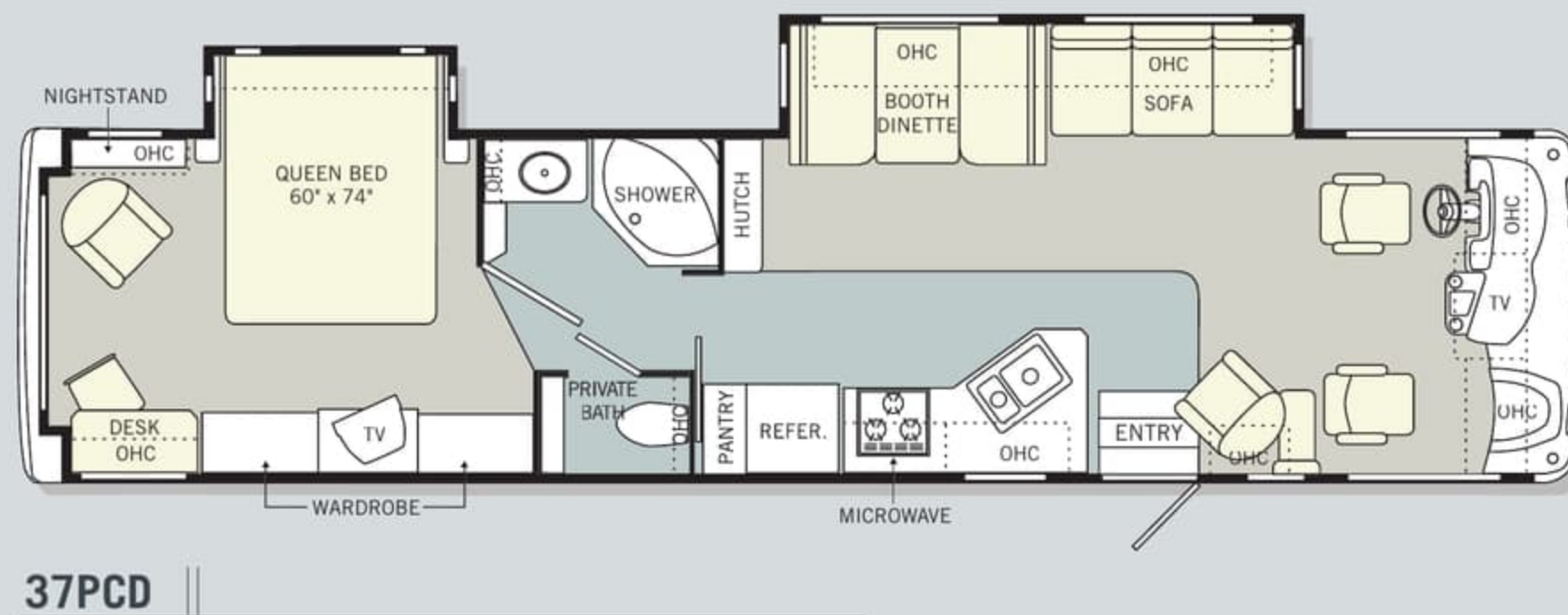
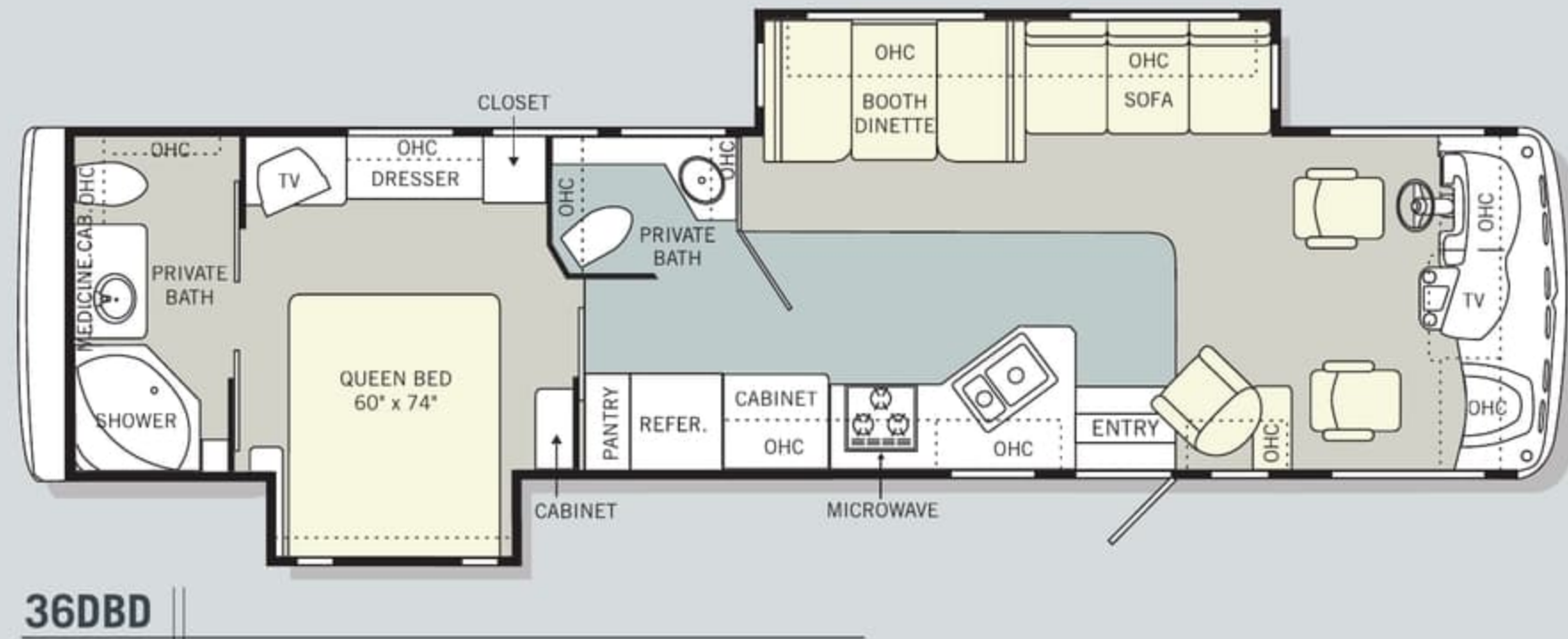


04 FLOORPLANS, CONTINUED

Each year, our designers work to find new ways to maximize your living area and create valuable storage space.



Find all the latest product
news and updates online:
monacocoach.com





Find all the latest product
news and updates online:
monacocoach.com

2004 SPECIFICATIONS

FORD WEIGHT RATINGS (LBS.)	32PBD	34SBD	34PBD	34PDT	36PED	36WDD	36DBD	37PCD	37PCT
Gross Vehicle	20,500	22,000	22,000	22,000	22,000	22,000	22,000	22,000	22,000
Gross Combined	25,500	26,000	26,000	26,000	26,000	26,000	26,000	26,000	26,000
Front Gross Axle	7,000	7,500	7,500	7,500	7,500	7,500	7,500	7,500	7,500
Rear Gross Axle	13,500	14,500	14,500	14,500	14,500	14,500	14,500	14,500	14,500
WORKHORSE WEIGHT RATINGS (LBS.)	W-20	W-22 OPTION	W-22	W-22	W-22	W-22	W-22	W-22	W-22
Gross Vehicle	20,700	22,000	22,000	22,000	22,000	22,000	22,000	22,000	22,000
Gross Combined	25,700	26,000	26,000	26,000	26,000	26,000	26,000	26,000	26,000
Front Gross Axle	7,500	8,000	8,000	8,000	8,000	8,000	8,000	8,000	8,000
Rear Gross Axle	13,500	14,500	14,500	14,500	14,500	14,500	14,500	14,500	14,500
MEASUREMENTS	32PBD	34SBD	34PBD	34PDT	36PED	36WDD	36DBD	37PCD	37PCT
Wheelbase	208"	228"	228"	228"	238"	238"	238"	242"	242"
Overall Length	32' 7"	34' 10"	34' 10"	34' 10"	36' 6"	36' 6"	36' 6"	37' 0"	37' 0"
Overall Height (with A/C, Ford)	11' 8"	11' 8"	11' 8"	11' 9"	11' 8"	11' 8"	11' 8"	11' 9"	11' 9"
Overall Height (with A/C, Workhorse)	11' 8"	12' 0"	12' 0"	12' 0"	12' 0"	12' 0"	12' 0"	12' 0"	12' 0"
Interior Height	6' 6"	6' 6"	6' 6"	6' 6"	6' 6"	6' 6"	6' 6"	6' 6"	6' 6"
Interior Width	94 1/2"	94 1/2"	94 1/2"	94 1/2"	94 1/2"	94 1/2"	94 1/2"	94 1/2"	94 1/2"
Exterior Width	100 1/2"	100 1/2"	100 1/2"	100 1/2"	100 1/2"	100 1/2"	100 1/2"	100 1/2"	100 1/2"
TANK CAPACITY (GAL.)	All tank capacities are estimated based upon calculations provided by the tank manufacturers and represent approximate capacities. The actual "usable capacity" may be greater or less than the estimated capacities based upon fabrication and installation of the tanks.								
Water Heater	10	10	10	10	10	10	10	10	10
Gray Tank	42	40	42	42	54	54	42/39	45	45
Black Tank	42	42	42	42	45	42	42/39	54	54
Fresh Tank	60	60	60	60	60	60	58	60	60
LP Tank ¹	24	24	24	24	24	24	24	24	24
Fuel Tank	75	75	75	75	75	75	75	75	75

¹ Actual filled LP capacity is 80% of listing due to safety shut-off required on tank.



Find all the latest product
news and updates online:
monacocoach.com

2004 SPECIFICATIONS

FORD WEIGHT RATINGS (LBS.)	32PBD	34SBD	34PBD	34PDT	36PED	36WDD	36DBD	37PCD	37PCT
Gross Vehicle	20,500	22,000	22,000	22,000	22,000	22,000	22,000	22,000	22,000
Gross Combined	25,500	26,000	26,000	26,000	26,000	26,000	26,000	26,000	26,000
Front Gross Axle	7,000	7,500	7,500	7,500	7,500	7,500	7,500	7,500	7,500
Rear Gross Axle	13,500	14,500	14,500	14,500	14,500	14,500	14,500	14,500	14,500
WORKHORSE WEIGHT RATINGS (LBS.)	W-20	W-22 OPTION	W-22	W-22	W-22	W-22	W-22	W-22	W-22
Gross Vehicle	20,700	22,000	22,000	22,000	22,000	22,000	22,000	22,000	22,000
Gross Combined	25,700	26,000	26,000	26,000	26,000	26,000	26,000	26,000	26,000
Front Gross Axle	7,500	8,000	8,000	8,000	8,000	8,000	8,000	8,000	8,000
Rear Gross Axle	13,500	14,500	14,500	14,500	14,500	14,500	14,500	14,500	14,500
MEASUREMENTS	32PBD	34SBD	34PBD	34PDT	36PED	36WDD	36DBD	37PCD	37PCT
Wheelbase	208"	228"	228"	228"	238"	238"	238"	242"	242"
Overall Length	32' 7"	34' 10"	34' 10"	34' 10"	36' 6"	36' 6"	36' 6"	37' 0"	37' 0"
Overall Height (with A/C, Ford)	11' 8"	11' 8"	11' 8"	11' 9"	11' 8"	11' 8"	11' 8"	11' 9"	11' 9"
Overall Height (with A/C, Workhorse)	11' 8"	12' 0"	12' 0"	12' 0"	12' 0"	12' 0"	12' 0"	12' 0"	12' 0"
Interior Height	6' 6"	6' 6"	6' 6"	6' 6"	6' 6"	6' 6"	6' 6"	6' 6"	6' 6"
Interior Width	94 1/2"	94 1/2"	94 1/2"	94 1/2"	94 1/2"	94 1/2"	94 1/2"	94 1/2"	94 1/2"
Exterior Width	100 1/2"	100 1/2"	100 1/2"	100 1/2"	100 1/2"	100 1/2"	100 1/2"	100 1/2"	100 1/2"
TANK CAPACITY (GAL.)	All tank capacities are estimated based upon calculations provided by the tank manufacturers and represent approximate capacities. The actual "usable capacity" may be greater or less than the estimated capacities based upon fabrication and installation of the tanks.								
Water Heater	10	10	10	10	10	10	10	10	10
Gray Tank	42	40	42	42	54	54	42/39	45	45
Black Tank	42	42	42	42	45	42	42/39	54	54
Fresh Tank	60	60	60	60	60	60	58	60	60
LP Tank ¹	24	24	24	24	24	24	24	24	24
Fuel Tank	75	75	75	75	75	75	75	75	75

¹ Actual filled LP capacity is 80% of listing due to safety shut-off required on tank.

2004 STANDARDS AND OPTIONS

BODY CONSTRUCTION

Alumaframe® Superstructure
Steel Cage Cockpit Construction
Peaked Aluminum Roof
with Fiberglass Insulation
Smooth Aluminum Exterior Walls
Front and Rear Molded Fiberglass
Caps with Integrated Bumpers
Steel Framed Floor
on Steel Trusses

Laminated Structurwood™ Flooring
Interior Paneling with
3/4" Insulation
Foam Insulated Floor Framing
with Luaun Backer
One-Piece Engine Cover
Power Heated Remote
Exterior Mirrors
Headlamps with Turn Signals

Streamlined Baggage Doors with
Integrated Single Handle Latches
EasyStor Slide-Out Compartments
One-Piece Polyethylene
Storage Compartment
Wheel Mud Flaps
Painted Mask and Skirt with Vinyl
Exterior Graphics
Rear Ladder
Interior Rubber Entry Step

Exterior Double Entry Steps,
Triple Entry Steps on W-22,
Workhorse Chassis
Undercoating

OPTIONS

Smooth Gel Coat Fiberglass
Exterior Walls (N/A: 37PCT
on Workhorse Chassis)
Full Length Mud Flap

COCKPIT

Fiberglass Automotive Dash
with Beige Grid Instrument Panel
and Two Tone Dash Vinyl
CD Player/Radio
with Four Speakers
Multi-Positioned Sunvisors
Front Privacy Drape with Tie Backs
Rear Vision System Prep
Intermittent Windshield Wipers
Tilt Steering Wheel

Cruise Control
Power Steering
Electric Automotive Horn
Center Console with Cup Holder
and Snack Tray
Side Cup Holders for Co-Pilot Seat
with Magazine Rack Below
Fabric Pilot and Co-Pilot
Recliner Seats
Carpeted Driver and Passenger
Floor Mats

Dash Workstation
Smoked Plexiglas® Cabinet Doors
over Entertainment Center Systems
Secure Front Cab over TVs
with Steel Framing

OPTIONS

Six-Way Power Pilot Seat
Six-Way Power Co-Pilot Seat

Soft Touch Vinyl Pilot
and Co-Pilot Seats
Rear Vision System
Pilot and Co-Pilot Pull Down
Sun Shades
CB Radio Prep
Driver's Side Door
with Full Electric
AM/FM Cassette
(Deletes CD Player)

APPLIANCES AND ACCESSORIES

Large Double-Door Refrigerator
High-Output 3-Burner Cooktop
Bi-Fold Range Cover
Spacesaver Microwave
with Touch Control
27" TV Stereo Color TV with Remote
Control (Centered in Cockpit
Overhead) (Entertainment Center
in 36PED 25" TV)
TV Antenna with TV Jacks
VCR Prep and Video Control Box
with Booster
Dual Exterior Hook-Ups for DSS
Dish and Cable

Cable TV Hook-Up
and Telephone Jacks
Exterior Gas Line Hook-up Prep
for LP Accessories

OPTIONS

Large Double-Door Refrigerator
with Ice Maker
Large Four-Door Refrigerator
with Ice Maker (N/A with Roll-Out
Pantry) (N/A: 32PBD)
High-Output Three-Burner Range
with Oven

Spacesaver Convection Microwave
with Touch Control

Washer/Dryer Prep (Requires
50 Amp Service Option) (32PBD,
34PDT, 36PED, 36WDD, 36DBD)

Combination Washer/Dryer
(Requires Washer/Dryer Prep
Option) (N/A: 34PDT with
Workhorse Chassis) (32PBD,
34PDT, 36PED, 36WDD, 36DBD)

Stereo TV and VCR Wired Through
Ceiling Speakers

19" Color TV with Remote Control
in Bedroom

VCR

DVD Player

Digital Satellite System Prep

Exterior Entertainment Center,
CD Player Radio with Two Speakers
(N/A: 34PDT)

Fireplace (Requires 50 Amp
Service Option) (36PED)

2004 STANDARDS AND OPTIONS

BODY CONSTRUCTION

Alumaframe® Superstructure
Steel Cage Cockpit Construction
Peaked Aluminum Roof
with Fiberglass Insulation
Smooth Aluminum Exterior Walls
Front and Rear Molded Fiberglass
Caps with Integrated Bumpers
Steel Framed Floor
on Steel Trusses

Laminated Structurwood™ Flooring
Interior Paneling with
3/4" Insulation
Foam Insulated Floor Framing
with Luaun Backer
One-Piece Engine Cover
Power Heated Remote
Exterior Mirrors
Headlamps with Turn Signals

Streamlined Baggage Doors with
Integrated Single Handle Latches
EasyStor Slide-Out Compartments
One-Piece Polyethylene
Storage Compartment
Wheel Mud Flaps
Painted Mask and Skirt with Vinyl
Exterior Graphics
Rear Ladder
Interior Rubber Entry Step

Exterior Double Entry Steps,
Triple Entry Steps on W-22,
Workhorse Chassis
Undercoating

OPTIONS

Smooth Gel Coat Fiberglass
Exterior Walls (N/A: 37PCT
on Workhorse Chassis)
Full Length Mud Flap

COCKPIT

Fiberglass Automotive Dash
with Beige Grid Instrument Panel
and Two Tone Dash Vinyl
CD Player/Radio
with Four Speakers
Multi-Positioned Sunvisors
Front Privacy Drape with Tie Backs
Rear Vision System Prep
Intermittent Windshield Wipers
Tilt Steering Wheel

Cruise Control
Power Steering
Electric Automotive Horn
Center Console with Cup Holder
and Snack Tray
Side Cup Holders for Co-Pilot Seat
with Magazine Rack Below
Fabric Pilot and Co-Pilot
Recliner Seats
Carpeted Driver and Passenger
Floor Mats

Dash Workstation
Smoked Plexiglas® Cabinet Doors
over Entertainment Center Systems
Secure Front Cab over TVs
with Steel Framing

OPTIONS

Six-Way Power Pilot Seat
Six-Way Power Co-Pilot Seat

Soft Touch Vinyl Pilot
and Co-Pilot Seats
Rear Vision System
Pilot and Co-Pilot Pull Down
Sun Shades
CB Radio Prep
Driver's Side Door
with Full Electric
AM/FM Cassette
(Deletes CD Player)

APPLIANCES AND ACCESSORIES

Large Double-Door Refrigerator
High-Output 3-Burner Cooktop
Bi-Fold Range Cover
Spacesaver Microwave
with Touch Control
27" TV Stereo Color TV with Remote
Control (Centered in Cockpit
Overhead) (Entertainment Center
in 36PED 25" TV)
TV Antenna with TV Jacks
VCR Prep and Video Control Box
with Booster
Dual Exterior Hook-Ups for DSS
Dish and Cable

Cable TV Hook-Up
and Telephone Jacks
Exterior Gas Line Hook-up Prep
for LP Accessories

OPTIONS

Large Double-Door Refrigerator
with Ice Maker
Large Four-Door Refrigerator
with Ice Maker (N/A with Roll-Out
Pantry) (N/A: 32PBD)
High-Output Three-Burner Range
with Oven

Spacesaver Convection Microwave
with Touch Control

Washer/Dryer Prep (Requires
50 Amp Service Option) (32PBD,
34PDT, 36PED, 36WDD, 36DBD)

Combination Washer/Dryer
(Requires Washer/Dryer Prep
Option) (N/A: 34PDT with
Workhorse Chassis) (32PBD,
34PDT, 36PED, 36WDD, 36DBD)

Stereo TV and VCR Wired Through
Ceiling Speakers

19" Color TV with Remote Control
in Bedroom

VCR

DVD Player

Digital Satellite System Prep

Exterior Entertainment Center,
CD Player Radio with Two Speakers
(N/A: 34PDT)

Fireplace (Requires 50 Amp
Service Option) (36PED)

INTERIOR

Vintage Oak Cabinetry
Raised Panel Cabinet Doors on Overhead Cabinets, Flat Panel Doors on Base Cabinets and Wardrobes
Cabinet End Panels
Black ABS Refrigerator Insert
Decorative Wall Board
Wallpaper Border Kitchen, Bath, and Bedroom Walls
Self-Supporting Top Hinged Overhead Storage Doors and Positive Catches on all Other Doors
Low Friction Roller Drawer Guides
Wood Interior Grab Handle on Cabinet at Entry Door
Brass Finished Entry Rail for Step Well
Brass Cabinetry Hardware and Bath Accessories
Integrated Cup Holder in Slide-Out next to Sofa
Laminate Kitchen Countertop with Laminated Perm-Edge, Stainless Steel Sink, Chrome Faucet and Two Sink Covers

Recessed Kitchen Countertop Extensions (34PDT, 36PED)
Toe Kicks, Kitchen and Bath Base Cabinets
Laminate Bathroom Countertop with Laminated Perm-Edge
All Other Countertops Laminate with Perm-Edge
Kitchen Overhead Cabinets with Adjustable Shelf
Kitchen Pantry with Adjustable Shelves next to Refrigerator (N/A: 32PBD)
Linoleum Flooring in Kitchen and Entryway (N/A: 34PDT)
Wilsonart® Plank Flooring in Bath, Kitchen and Entryway (34PDT)
Linoleum Flooring in Bathroom (N/A: 34PDT)
Wilsonart® Plank Flooring in Rear Bath (36DBD)
Upgraded Nylon Carpeting with Scotchgard™ Stain Release Pad in Living Area and Bedroom
Soft Touch Padded Vinyl Ceiling
Wood Slide-Out Fascia with Fabric Inserts

Arched Beveled Living Area or Bedroom Mirror, with Border under Mirrors Living Area Location (32PBD, 34SBD, 36DBD, Bedroom in 37PCT)
Picture in Living or Bedroom Area, (34PDT, 36PED Side of Refer Wall, 32PBD, 34PBD, BR Bath Wall Side of Bed, 34SBD End of Shower Wall) (N/A: 36DBD, 37PCD, 37PCT)
Bath Door with Accent Trim on Hallway Side
Wood Trim for Bath Door Opening Hallway Side
Magazine Rack Bathroom (36PED, 36WDD, 36DBD, 37PCD, 37PCT)
Crown Molding in Bedroom and Living Area on All Open Walls
Medicine Cabinet with Adjustable Shelves
Bathroom Lav Base Mirror with Wood Frame
Towel Rack on Back of Bath Door
Two Towel Rings in Bathroom
Accent Mirror on Rear Wall, Wall Border under Mirror (N/A: 36DBD, 36WDD, 37PCD, 37PCT)

Rear Wardrobe Closet with Deluxe Mirror Frames (Brass Finish 36WDD)
Bedsread with Two Decorative Pillows
Fabric Headboard
Day/Night Pleated Shades in Living Area and Blackout Shades in Bedroom
Mini Blinds in Kitchen and Bathroom
Soil Repellant on Fabric, Teflon® Fabric Protection
Valance above Entry Door with Clock

OPTIONS

Decors: Valley Glen, Paradise Bay, Chateau Stone
Wood Choice: Regal Cherry and Maple
Laminate Plank Flooring in Kitchen, Bath and Entryway (N/A: 34PDT)
Roll-Out Pantry next to Refrigerator with Four Baskets (N/A with Four-Door Refrigerator Option) (N/A: 32PBD)
Hardwood Raised Panel Doors on Refrigerator



INTERIOR

Vintage Oak Cabinetry
Raised Panel Cabinet Doors on Overhead Cabinets, Flat Panel Doors on Base Cabinets and Wardrobes
Cabinet End Panels
Black ABS Refrigerator Insert
Decorative Wall Board
Wallpaper Border Kitchen, Bath, and Bedroom Walls
Self-Supporting Top Hinged Overhead Storage Doors and Positive Catches on all Other Doors
Low Friction Roller Drawer Guides
Wood Interior Grab Handle on Cabinet at Entry Door
Brass Finished Entry Rail for Step Well
Brass Cabinetry Hardware and Bath Accessories
Integrated Cup Holder in Slide-Out next to Sofa
Laminate Kitchen Countertop with Laminated Perm-Edge, Stainless Steel Sink, Chrome Faucet and Two Sink Covers

Recessed Kitchen Countertop Extensions (34PDT, 36PED)
Toe Kicks, Kitchen and Bath Base Cabinets
Laminate Bathroom Countertop with Laminated Perm-Edge
All Other Countertops Laminated with Perm-Edge
Kitchen Overhead Cabinets with Adjustable Shelf
Kitchen Pantry with Adjustable Shelves next to Refrigerator (N/A: 32PBD)
Linoleum Flooring in Kitchen and Entryway (N/A: 34PDT)
Wilsonart® Plank Flooring in Bath, Kitchen and Entryway (34PDT)
Linoleum Flooring in Bathroom (N/A: 34PDT)
Wilsonart® Plank Flooring in Rear Bath (36DBD)
Upgraded Nylon Carpeting with Scotchgard™ Stain Release Pad in Living Area and Bedroom
Soft Touch Padded Vinyl Ceiling
Wood Slide-Out Fascia with Fabric Inserts

Arched Beveled Living Area or Bedroom Mirror, with Border under Mirrors Living Area Location (32PBD, 34SBD, 36DBD, Bedroom in 37PCT)
Picture in Living or Bedroom Area, (34PDT, 36PED Side of Refer Wall, 32PBD, 34PBD, BR Bath Wall Side of Bed, 34SBD End of Shower Wall) (N/A: 36DBD, 37PCD, 37PCT)
Bath Door with Accent Trim on Hallway Side
Wood Trim for Bath Door Opening Hallway Side
Magazine Rack Bathroom (36PED, 36WDD, 36DBD, 37PCD, 37PCT)
Crown Molding in Bedroom and Living Area on All Open Walls
Medicine Cabinet with Adjustable Shelves
Bathroom Lav Base Mirror with Wood Frame
Towel Rack on Back of Bath Door
Two Towel Rings in Bathroom
Accent Mirror on Rear Wall, Wall Border under Mirror (N/A: 36DBD, 36WDD, 37PCD, 37PCT)

Rear Wardrobe Closet with Deluxe Mirror Frames (Brass Finish 36WDD)
Bedspread with Two Decorative Pillows
Fabric Headboard
Day/Night Pleated Shades in Living Area and Blackout Shades in Bedroom
Mini Blinds in Kitchen and Bathroom
Soil Repellant on Fabric, Teflon® Fabric Protection
Valance above Entry Door with Clock

OPTIONS

Decors: Valley Glen, Paradise Bay, Chateau Stone
Wood Choice: Regal Cherry and Maple
Laminated Plank Flooring in Kitchen, Bath and Entryway (N/A: 34PDT)
Roll-Out Pantry next to Refrigerator with Four Baskets (N/A with Four-Door Refrigerator Option) (N/A: 32PBD)
Hardwood Raised Panel Doors on Refrigerator



FURNITURE

Queen Bed with Nightstands
Party Table behind Co-Pilot Seat
(N/A: 34PDT, 36PED)

Arched Back Wood Booth Dinette
with Side Sliding Table Top and
Drawers (N/A: 34PDT, 36PED)

Freestanding Dinette with
Wall Cabinet, Two Freestanding
Chairs and Two Folding Chairs
(34PDT, 36PED)

Fabric Jackknife Sofa, Two Pillows
on All Sofas

Fabric Swivel Barrel Chair
(N/A: 34PDT, 36PED)

Fabric Swivel Barrel Chair
and Desk Chair Bedroom
(37PCD, 37PCT)

OPTIONS

Fabric Hide-A-Bed Sofa with
Two Pillows (N/A: 36PED)

Fabric Hide-A-Bed with Footrest
and Two Pillows (36PED)

Fabric Hide-A-Bed Sofa with
Air Mattress and Two Pillows
(N/A: 36PED)

Fabric Hide-A-Bed with
Footrest, Air Mattress
and Two Pillows (36PED)

Soft Touch Vinyl Hide-A-Bed Sofa
with Two Pillows (N/A: 36PED)

Soft Touch Vinyl Hide-A-Bed with
Footrest and Two Pillows (36PED)

Soft Touch Vinyl Hide-A-Bed Sofa
with Air Mattress and Two Pillows
(N/A: 36PED)

Soft Touch Vinyl Hide-A-Bed with
Footrest, Air Mattress and Two
Pillows (36PED)

Fabric Sleeper L-Sofa with Drawer
IPO Jackknife Sofa (36PED)
Deletes Wall Cabinet in Dinette

Fabric Electric Sofa IPO
Jackknife Sofa (N/A: 36PED)

Fabric Swivel Recliner IPO Fabric
Barrel Chair (N/A: 34PDT, 36PED)

Soft Touch Vinyl Swivel Recliner
Chair IPO Fabric Barrel Chair
(N/A: 34PDT, 36PED)

Fabric Swivel Barrel Chair
IPO Desk Chair Bedroom
(37PCD, 37PCT)

Bedroom Desk (N/A: 34PBD,
37PCD, 37PCT)

Freestanding Dinette with Wall
Cabinet, Two Freestanding
Chairs and Two Folding Chairs
(N/A: 34PDT, 36PED)

ELECTRICAL SYSTEMS AND LIGHTS

30 Amp 120V Distribution Panel
and Power Cord

55 Amp Electronic
12V Power Converter

Onan® 5.5 kW Gas Generator

Two 6V House Batteries

Battery Disconnect Switches

12V and 110V Outlet
in Cockpit Area

Porch Light

Exterior Power Entry Step
with Light

Interior Step Well Entry Step Lights

Water Pump Switch in Service Bay
Area and Bath

Lights in Outside
Storage Compartments

120V Receptacles in Outside
Storage Compartment

Underhood Utility Light

Computer Hook-Up with Phone
Jack in Dinette Area

Pilot and Co-Pilot Map Lights

Systems Control Center in Hallway

Fluorescent Lights under
Kitchen Overhead

Fluorescent Ceiling Lights Throughout

Fluorescent Ceiling Lights inside
Living Area Slide-Out House

Decorative Brass Lighting Living
Room Wall Light, Dinette
Overhead, Cosmetic Vanity Light

Halogen Lights under Living
Room and Dining Room
Overhead Cabinets

Bullet Lights over Bed Brass Finish
with His and Hers Switches

Decorative Side Lights inside
Bedroom Slide-Out on End Walls

OPTIONS

50 Amp Service with Energy
Management System

50 Amp 120V Distribution
Panel and Cord (Required
with Fireplace Option)

130 Watt Inverter

Storage Compartment Tank
Monitor Gauge

FURNITURE

Queen Bed with Nightstands
Party Table behind Co-Pilot Seat
(N/A: 34PDT, 36PED)

Arched Back Wood Booth Dinette
with Side Sliding Table Top and
Drawers (N/A: 34PDT, 36PED)

Freestanding Dinette with
Wall Cabinet, Two Freestanding
Chairs and Two Folding Chairs
(34PDT, 36PED)

Fabric Jackknife Sofa, Two Pillows
on All Sofas

Fabric Swivel Barrel Chair
(N/A: 34PDT, 36PED)

Fabric Swivel Barrel Chair
and Desk Chair Bedroom
(37PCD, 37PCT)

OPTIONS

Fabric Hide-A-Bed Sofa with
Two Pillows (N/A: 36PED)

Fabric Hide-A-Bed with Footrest
and Two Pillows (36PED)

Fabric Hide-A-Bed Sofa with
Air Mattress and Two Pillows
(N/A: 36PED)

Fabric Hide-A-Bed with
Footrest, Air Mattress
and Two Pillows (36PED)

Soft Touch Vinyl Hide-A-Bed Sofa
with Two Pillows (N/A: 36PED)

Soft Touch Vinyl Hide-A-Bed with
Footrest and Two Pillows (36PED)

Soft Touch Vinyl Hide-A-Bed Sofa
with Air Mattress and Two Pillows
(N/A: 36PED)

Soft Touch Vinyl Hide-A-Bed with
Footrest, Air Mattress and Two
Pillows (36PED)

Fabric Sleeper L-Sofa with Drawer
IPO Jackknife Sofa (36PED)

Deletes Wall Cabinet in Dinette

Fabric Electric Sofa IPO
Jackknife Sofa (N/A: 36PED)

Fabric Swivel Recliner IPO Fabric
Barrel Chair (N/A: 34PDT, 36PED)

Soft Touch Vinyl Swivel Recliner
Chair IPO Fabric Barrel Chair
(N/A: 34PDT, 36PED)

Fabric Swivel Barrel Chair
IPO Desk Chair Bedroom
(37PCD, 37PCT)

Bedroom Desk (N/A: 34PBD,
37PCD, 37PCT)

Freestanding Dinette with Wall
Cabinet, Two Freestanding
Chairs and Two Folding Chairs
(N/A: 34PDT, 36PED)

ELECTRICAL SYSTEMS AND LIGHTS

30 Amp 120V Distribution Panel
and Power Cord

55 Amp Electronic
12V Power Converter

Onan® 5.5 kW Gas Generator

Two 6V House Batteries

Battery Disconnect Switches

12V and 110V Outlet
in Cockpit Area

Porch Light

Exterior Power Entry Step
with Light

Interior Step Well Entry Step Lights

Water Pump Switch in Service Bay
Area and Bath

Lights in Outside
Storage Compartments

120V Receptacles in Outside
Storage Compartment

Underhood Utility Light

Computer Hook-Up with Phone
Jack in Dinette Area

Pilot and Co-Pilot Map Lights

Systems Control Center in Hallway

Fluorescent Lights under
Kitchen Overhead

Fluorescent Ceiling Lights Throughout

Fluorescent Ceiling Lights inside
Living Area Slide-Out House

Decorative Brass Lighting Living
Room Wall Light, Dinette
Overhead, Cosmetic Vanity Light

Halogen Lights under Living
Room and Dining Room
Overhead Cabinets

Bullet Lights over Bed Brass Finish
with His and Hers Switches

Decorative Side Lights inside
Bedroom Slide-Out on End Walls

OPTIONS

50 Amp Service with Energy
Management System

50 Amp 120V Distribution
Panel and Cord (Required
with Fireplace Option)

130 Watt Inverter

Storage Compartment Tank
Monitor Gauge

PLUMBING AND LP SYSTEMS

Kitchen Stainless Steel Sink
with Single Lever Chrome Faucet

Separate Chrome Faucet
for Filtered Water

Bath Lav Faucet Single Handle
Brass Finish

Demand Water System
and Water Pump

10 Gallon LP Gas/Electric
Water Heater with Electronic
Ignition, DSI

Winterization Valving System

Water Heater By-Pass Valve

Toilet with Sprayer

No-Fuss Flush Holding Tank

Rinsing System

Insulated Systems Compartment
with Easy Access to Hook-Up

Shower inside Wet Bay
with Hot/Cold Water

Gravity and Pressurized Water Fill
Contained Storage Area
for Sewer Hose

One-Piece Fiberglass Shower

Shower Light

Brass Framed Shower Door
with Obscure Glass

OPTIONS

Bath Tub

HEATING, VENTS, AND AIR CONDITIONING

One 13.5M BTU Air Conditioner
with Ducted Air and Analog Wall
Thermostat (32PBD, 34SBD,
34PBD, 34PDT)

One 13.5M BTU and One 11.0M
BTU Air Conditioner with Ducted Air
and Wall Analog Thermostat (36PED,
36WDD, 36DBD, 37PCD, 37PCT)

35M BTU Electronic
Ignition Furnace

Electronic Dash AC/Heat Climate
Control System

In-Floor Ducted Heating System
with Metal Floor Registers

Manual Roof Vent Kitchen (36PED,
36WDD, 36DBD, 37PCD, 37PCT)

Manual Roof Vent Living Area
(32PBD, 34SBD, 34PBD, 34PDT)

12V Roof Vent Bathroom

Manual Roof Vent Bedroom
(32PBD, 34SBD, 34PBD, 34PDT)

Metal Floor Registers (Antique Brass)

OPTIONS

Dual 13.5M BTU Air Conditioner,
Requires 50 Amp Service (36PED,
36WDD, 36DBD, 37PCD, 37PCT)

One 13.5M BTU and One 11.0M
BTU Air Conditioner (32PBD,
34SBD, 34PBD, 34PDT)

12V Attic Fan Kitchen (36PED,
36WDD, 36DBD, 37PCD, 37PCT)

12V Attic Fan Living Area (32PBD,
34SBD, 34PBD, 34PDT)

12V Wet Bay Heater

WINDOWS, DOORS, AND AWNINGS

Radius Flush Mount Single
Pane Safety Glass Dark Tinted
Slider Windows

Radius Entrance Door with Clear
Glass, Roller Shade, Screen Door
and Anti-Skid Steps

Two Interior Grab Handles
and One Exterior Grab Handle
Topper Slide-Out Awnings Living
Area and Bedroom

Protecta Glaze Tinted Plexiglas®
Skylight in Bathroom

Awning Rail

OPTIONS

Radius Flush Mount Dual
Pane Safety Glass Dark Tinted
Slider Windows

Texture Vinyl Patio Awning
Carefree® Automatic Patio Awning

Texture Vinyl Window
Awnings Living Area Slide-Out
House Windows

Texture Vinyl Side Window Awning
Bedroom (N/A: 37PCD, 37PCT)

SAFETY

Fire Extinguisher

Deadbolt Lock on Entrance Door

120V GFI Protected Circuit
(Kitchen, Bath and Exterior)

LP Gas Detector

Smoke Detector

Carbon Monoxide Detector

Pilot and Co-Pilot Three-Point
Seat Belts

Third Brake Safety Light

Egress Windows

PLUMBING AND LP SYSTEMS

Kitchen Stainless Steel Sink
with Single Lever Chrome Faucet
Separate Chrome Faucet
for Filtered Water

Bath Lav Faucet Single Handle
Brass Finish

Demand Water System
and Water Pump

10 Gallon LP Gas/Electric
Water Heater with Electronic
Ignition, DSI

Winterization Valving System

Water Heater By-Pass Valve
Toilet with Sprayer

No-Fuss Flush Holding Tank
Rinsing System

Insulated Systems Compartment
with Easy Access to Hook-Up
Shower inside Wet Bay
with Hot/Cold Water

Gravity and Pressurized Water Fill
Contained Storage Area
for Sewer Hose

One-Piece Fiberglass Shower

Shower Light
Brass Framed Shower Door
with Obscure Glass

OPTIONS

Bath Tub

HEATING, VENTS, AND AIR CONDITIONING

One 13.5M BTU Air Conditioner
with Ducted Air and Analog Wall
Thermostat (32PBD, 34SBD,
34PBD, 34PDT)

One 13.5M BTU and One 11.0M
BTU Air Conditioner with Ducted Air
and Wall Analog Thermostat (36PED,
36WDD, 36DBD, 37PCD, 37PCT)

35M BTU Electronic
Ignition Furnace

Electronic Dash AC/Heat Climate
Control System

In-Floor Ducted Heating System
with Metal Floor Registers

Manual Roof Vent Kitchen (36PED,
36WDD, 36DBD, 37PCD, 37PCT)

Manual Roof Vent Living Area
(32PBD, 34SBD, 34PBD, 34PDT)

12V Roof Vent Bathroom

Manual Roof Vent Bedroom
(32PBD, 34SBD, 34PBD, 34PDT)

Metal Floor Registers (Antique Brass)

OPTIONS

Dual 13.5M BTU Air Conditioner,
Requires 50 Amp Service (36PED,
36WDD, 36DBD, 37PCD, 37PCT)

One 13.5M BTU and One 11.0M
BTU Air Conditioner (32PBD,
34SBD, 34PBD, 34PDT)

12V Attic Fan Kitchen (36PED,
36WDD, 36DBD, 37PCD, 37PCT)

12V Attic Fan Living Area (32PBD,
34SBD, 34PBD, 34PDT)

12V Wet Bay Heater

WINDOWS, DOORS, AND AWNINGS

Radius Flush Mount Single
Pane Safety Glass Dark Tinted
Slider Windows

Radius Entrance Door with Clear
Glass, Roller Shade, Screen Door
and Anti-Skid Steps

Two Interior Grab Handles
and One Exterior Grab Handle
Topper Slide-Out Awnings Living
Area and Bedroom

Protecta Glaze Tinted Plexiglas®
Skylight in Bathroom

Awning Rail

OPTIONS

Radius Flush Mount Dual
Pane Safety Glass Dark Tinted
Slider Windows

Texture Vinyl Patio Awning
Carefree® Automatic Patio Awning

Texture Vinyl Window
Awnings Living Area Slide-Out
House Windows

Texture Vinyl Side Window Awning
Bedroom (N/A: 37PCD, 37PCT)

SAFETY

Fire Extinguisher
Deadbolt Lock on Entrance Door

120V GFI Protected Circuit
(Kitchen, Bath and Exterior)
LP Gas Detector

Smoke Detector
Carbon Monoxide Detector

Pilot and Co-Pilot Three-Point
Seat Belts

Third Brake Safety Light
Egress Windows

FORD CHASSIS/ENGINE/SUSPENSION

Electronic Fuel Injection Gasoline
Engine 6.8L V10
Cubic Inch Displacement
415"/6.8L
Torque at 3250 RPMs 425 lbs./ft.

4-Speed Automatic Transmission
with Overdrive
Fuel Tank Capacity 75 Gallon
130 Amp Alternator

Rear Axle Ratio 5.38:1
Radial Tires 245/70RX19.5F
Chrome Wheel Covers
Leaf Spring Suspension

ABS Brake System
Hitch Receiver with Connector
SmartStructure

WORKHORSE CHASSIS/ENGINE/SUSPENSION

Electronic Fuel Injection Gasoline
Engine 8.1L V8
Cubic Inch Displacement
496"/8.1L
Torque at 340 HP 455 lbs./ft.
5-Speed Automatic Transmission
with Overdrive

Fuel Tank Capacity 75 Gallon
145 Amp Alternator
Rear Axle Ratio 5.38:1
Radial Tires 235/80R 22.5G (All
except 32PBD 245/70R 19.5F)
Stainless Steel Wheel Liners

Leaf Spring Suspension
ABS Brake System
Hitch Receiver with Connector
SmartStructure

OPTIONS

Manual Hydraulic Leveling System
Workhorse W-22 Chassis Rated
22,000 Lb., Radial Tires 235/80R
22.5G, 4,000 Lb. Hitch (32PBD)
Stainless Steel Wheel Simulators
(Standard on Workhorse Chassis)

The actual overall length of the recreational vehicle may differ from that indicated in the brochure due to variances in the manufacturing process and/or installed components. The actual length may be greater or less than that indicated. Due to the large variety of options and floorplan arrangements available to our customers, actual weights for each unit can differ significantly. Monaco Coach provides a weight sticker on each unit we produce which includes that unit's tank capacities and approximate weight. Consult your local Monaco Coach dealer for unit availability and further information. Your towed vehicle should be equipped with auxiliary brakes if the weight of the towed load exceeds 1,000 lbs. The information printed in this brochure reflects product design, fabrication, and component parts at the date of printing. The manufacturer reserves the right, at any time, to make changes in product design or material or component specifications as its sole option, without notice. This includes the substitution of components of a different brand or trade name which will result in comparable performance. All information printed in this brochure is subject to change after the date of printing. Some features shown or mentioned in this brochure are optional and may only be available in selected floorplans. Photographs may show props or decorations that are not standard equipment on Monaco Coach models. Monaco Coach, the Monaco logo and its design, are registered trademarks. All other products and company names are trademarks and/or registered trademarks of their respective holders. While the color of the motorhome's exterior and the interior fabrics depicted in this sales brochure are fair and reasonable depictions, the colors depicted may not be an exact match of the actual colors because of the variances in photo-processing and variances caused by inserting the photographs within the sales brochure. Due to product improvements, changes during the model year and/or transcription errors that may occur, information represented within this brochure may not be accurate at the time of your purchase. If certain information is significant to your purchasing decision, please confirm the information with your dealer prior to submitting your order.

FORD CHASSIS/ENGINE/SUSPENSION

Electronic Fuel Injection Gasoline
Engine 6.8L V10
Cubic Inch Displacement
415"/6.8L
Torque at 3250 RPMs 425 lbs./ft.

4-Speed Automatic Transmission
with Overdrive
Fuel Tank Capacity 75 Gallon
130 Amp Alternator

Rear Axle Ratio 5.38:1
Radial Tires 245/70RX19.5F
Chrome Wheel Covers
Leaf Spring Suspension

ABS Brake System
Hitch Receiver with Connector
SmartStructure

WORKHORSE CHASSIS/ENGINE/SUSPENSION

Electronic Fuel Injection Gasoline
Engine 8.1L V8
Cubic Inch Displacement
496"/8.1L
Torque at 340 HP 455 lbs./ft.
5-Speed Automatic Transmission
with Overdrive

Fuel Tank Capacity 75 Gallon
145 Amp Alternator
Rear Axle Ratio 5.38:1
Radial Tires 235/80R 22.5G (All
except 32PBD 245/70R 19.5F)
Stainless Steel Wheel Liners

Leaf Spring Suspension
ABS Brake System
Hitch Receiver with Connector
SmartStructure

OPTIONS

Manual Hydraulic Leveling System
Workhorse W-22 Chassis Rated
22,000 Lb., Radial Tires 235/80R
22.5G, 4,000 Lb. Hitch (32PBD)
Stainless Steel Wheel Simulators
(Standard on Workhorse Chassis)

The actual overall length of the recreational vehicle may differ from that indicated in the brochure due to variances in the manufacturing process and/or installed components. The actual length may be greater or less than that indicated. Due to the large variety of options and floorplan arrangements available to our customers, actual weights for each unit can differ significantly. Monaco Coach provides a weight sticker on each unit we produce which includes that unit's tank capacities and approximate weight. Consult your local Monaco Coach dealer for unit availability and further information. Your towed vehicle should be equipped with auxiliary brakes if the weight of the towed load exceeds 1,000 lbs. The information printed in this brochure reflects product design, fabrication, and component parts at the date of printing. The manufacturer reserves the right, at any time, to make changes in product design or material or component specifications as its sole option, without notice. This includes the substitution of components of a different brand or trade name which will result in comparable performance. All information printed in this brochure is subject to change after the date of printing. Some features shown or mentioned in this brochure are optional and may only be available in selected floorplans. Photographs may show props or decorations that are not standard equipment on Monaco Coach models. Monaco Coach, the Monaco logo and its design, are registered trademarks. All other products and company names are trademarks and/or registered trademarks of their respective holders. While the color of the motorhome's exterior and the interior fabrics depicted in this sales brochure are fair and reasonable depictions, the colors depicted may not be an exact match of the actual colors because of the variances in photo-processing and variances caused by inserting the photographs within the sales brochure. Due to product improvements, changes during the model year and/or transcription errors that may occur, information represented within this brochure may not be accurate at the time of your purchase. If certain information is significant to your purchasing decision, please confirm the information with your dealer prior to submitting your order.



Also, as a new Monaco owner, you're entitled to our comprehensive **OWNER ADVANTAGE PROGRAM**. With this impressive roadside assistance package, Master Certified RVDA Technicians and ASE Certified Technicians are on call 24 hours a day to handle any problems you may experience with your coach. And that's not all. Members of our Owner Advantage Program also receive the following benefits: emergency roadside service, fuel delivery, tire change, battery jump start, lockout service, trip routing and maps, and much more.

You can access **MONACOCOACH.COM** night or day to take advantage of its many features. The site includes factory tours, a dealer locator function and plenty of information on Monaco products and scheduled club events. Plus, through the site, you may contact us directly at any time.



THE FAMILY ADVANTAGE.



When you purchase a coach from Monaco, you become part of an industry-leading family of companies called Monaco Coach Corporation. What does that mean for you? It means you have access to a wider array of benefits. To begin with, your coach is built by a level of expertise that could only be achieved through the teamwork and combined experience of all our companies. Like, for example, such exclusive innovations as the Roadmaster chassis — designed specifically for each individual model of our gas coaches.

You also get the benefit of our White Glove factory inspection program, for a higher level of quality assurance and added peace of mind. And your dealer will be happy to tell you about our other innovative programs, including our Extended Care service agreements. Of course, once you're on the road, you'll have access to our nationwide network of more than 350 service facilities, meaning wherever you travel, you're never far from a friend. Ready to roll? In a 2004 Monaco, the strength of our entire family is behind you every mile of the way.



350
and growing | Service
Facilities
Nationwide



WARRANTIES

12 MONTH/24,000 MILE basic limited warranty

5 YEAR/50,000 MILE limited warranty on aluminum or steel frame structure of sidewall, roof, front and rear cap

See owner's manual for complete details.



As a Monaco owner, you're entitled to a free subscription to our **LIFESTYLES** magazine, giving you all the latest news on our products, club events and exciting destinations.



Also, as a new Monaco owner, you're entitled to our comprehensive **OWNER ADVANTAGE PROGRAM**. With this impressive roadside assistance package, Master Certified RVDA Technicians and ASE Certified Technicians are on call 24 hours a day to handle any problems you may experience with your coach. And that's not all. Members of our Owner Advantage Program also receive the following benefits: emergency roadside service, fuel delivery, tire change, battery jump start, lockout service, trip routing and maps, and much more.

You can access **MONACOCOACH.COM** night or day to take advantage of its many features. The site includes factory tours, a dealer locator function and plenty of information on Monaco products and scheduled club events. Plus, through the site, you may contact us directly at any time.



THE FAMILY ADVANTAGE.

When you purchase a coach from Monaco, you become part of an industry-leading family of companies called Monaco Coach Corporation. What does that mean for you? It means you have access to a wider array of benefits. To begin with, your coach is built by a level of expertise that could only be achieved through the teamwork and combined experience of all our companies. Like, for example, such exclusive innovations as the Roadmaster chassis — designed specifically for each individual model of our gas coaches.

You also get the benefit of our White Glove factory inspection program, for a higher level of quality assurance and added peace of mind. And your dealer will be happy to tell you about our other innovative programs, including our Extended Care service agreements. Of course, once you're on the road, you'll have access to our nationwide network of more than 350 service facilities, meaning wherever you travel, you're never far from a friend. Ready to roll? In a 2004 Monaco, the strength of our entire family is behind you every mile of the way.



350
and growing | Service
Facilities
Nationwide



WARRANTIES

12 MONTH/24,000 MILE basic limited warranty


5 YEAR/50,000 MILE limited warranty on aluminum or steel frame structure of sidewall, roof, front and rear cap

See owner's manual for complete details.

As a Monaco owner, you're entitled to a free subscription to our **LIFESTYLES** magazine, giving you all the latest news on our products, club events and exciting destinations.



THE SHINE OF SUCCESS.




It's like a milestone you breeze past without noticing. A turning point where everything changes. Where suddenly, the things you've achieved outnumber the things you've dreamed of. In short, you've arrived. And now that you're here, you can fully appreciate the quality experience of a Monaco coach. As a perfectionist, it's a level of performance and luxury that you recognize instantly. And as a freedom-lover, it's your gateway to endless possibilities. This is the starting point for a whole new journey. Because once you catch a glimpse of yourself in the mirror of a new Monaco, you'll see once and for all just how far you've come.



91320 Industrial Way, Coburg, OR 97408 800 634-0855 606 Nelson's Pkwy., Wakarusa, IN 46573 800 650-7337

Monaco Coach Corporation is traded on the NYSE under the listing MNC. 0903 NPN:BROMMON

THE SHINE OF SUCCESS.



It's like a milestone you breeze past without noticing. A turning point where everything changes. Where suddenly, the things you've achieved outnumber the things you've dreamed of. In short, you've arrived. And now that you're here, you can fully appreciate the quality experience of a Monaco coach. As a perfectionist, it's a level of performance and luxury that you recognize instantly. And as a freedom-lover, it's your gateway to endless possibilities. This is the starting point for a whole new journey. Because once you catch a glimpse of yourself in the mirror of a new Monaco, you'll see once and for all just how far you've come.



91320 Industrial Way, Coburg, OR 97408 800 634-0855 606 Nelson's Pkwy., Wakarusa, IN 46573 800 650-7337

Monaco Coach Corporation is traded on the NYSE under the listing MNC. 0903 NPN:BROMMON