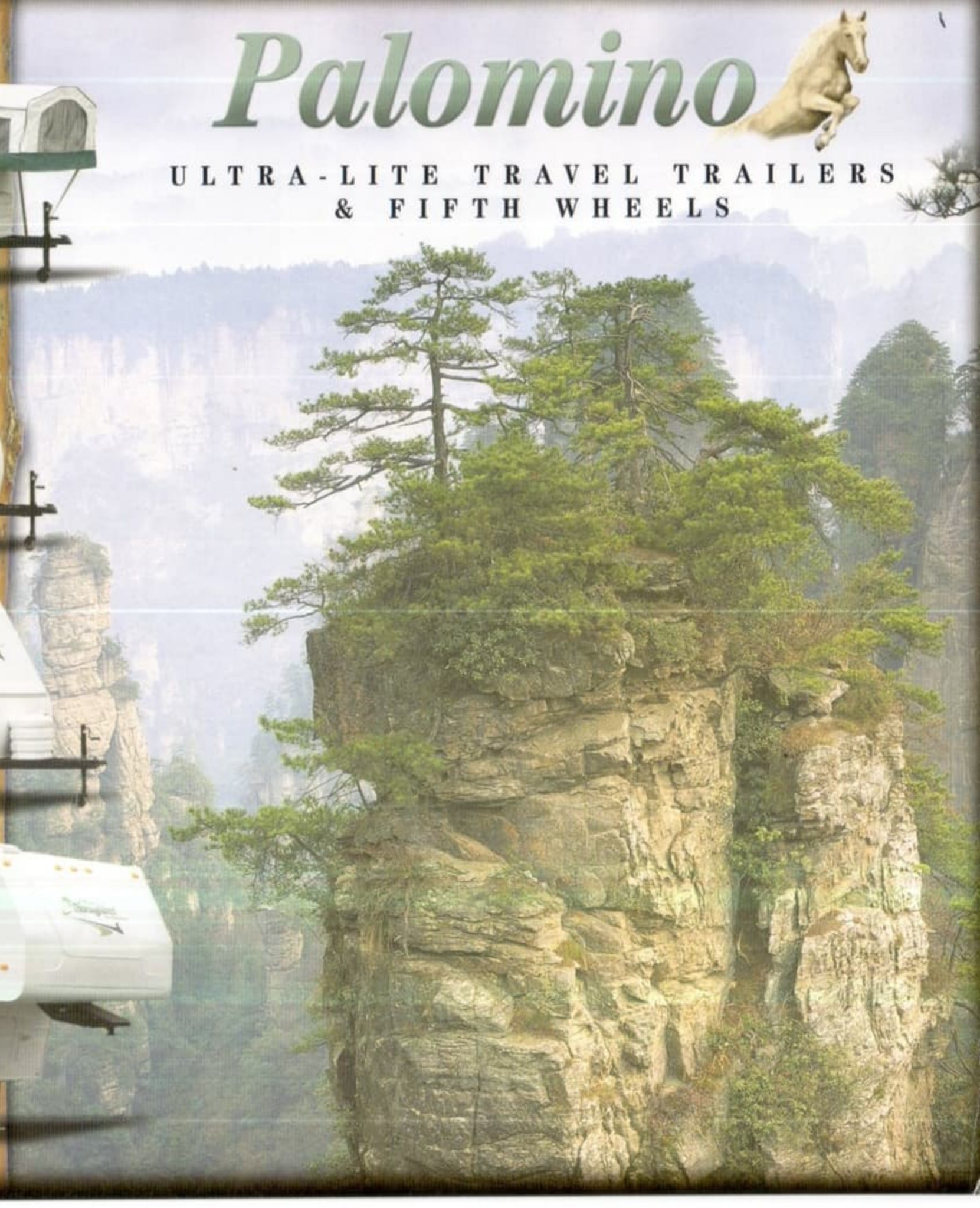


Palomino



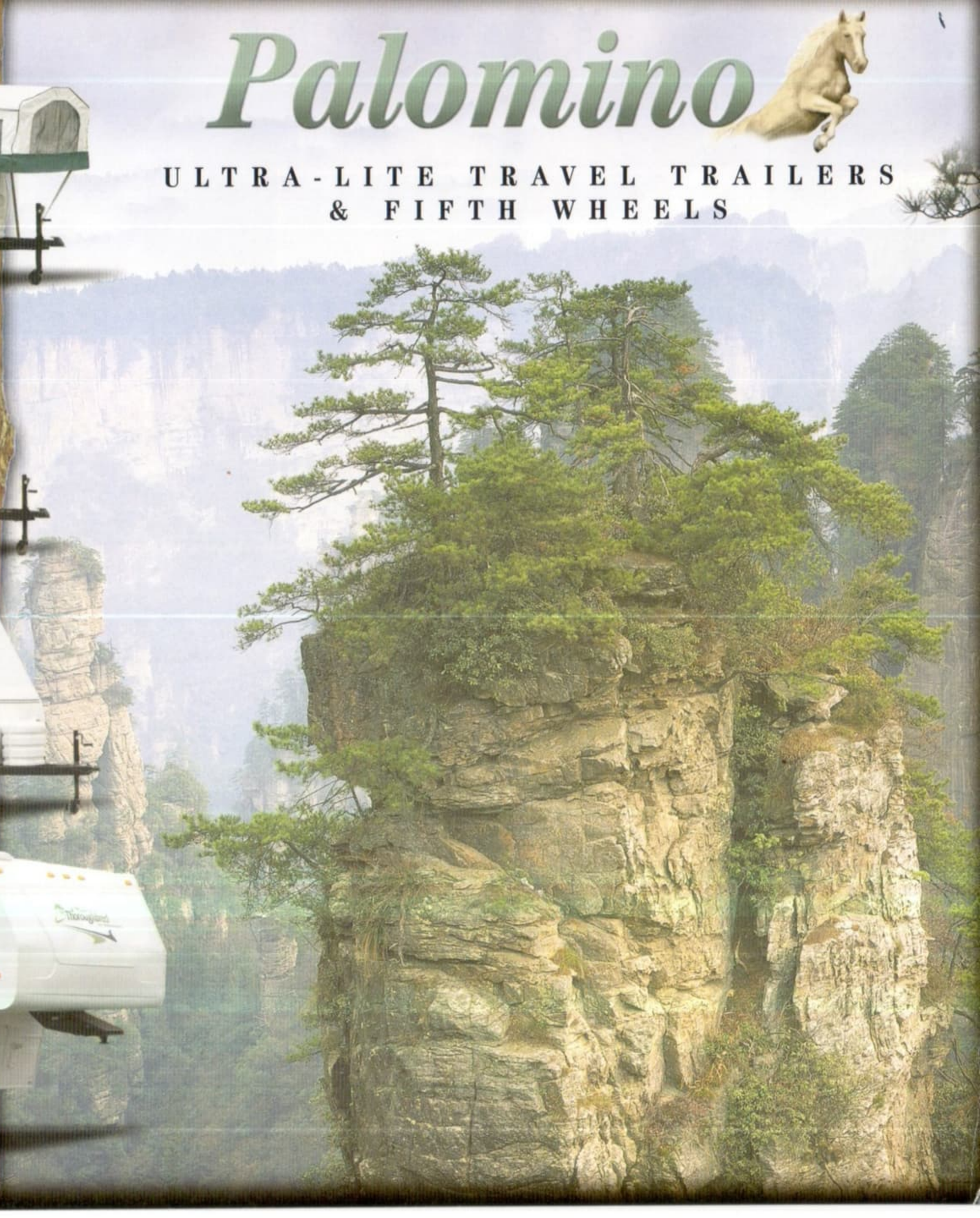
ULTRA-LITE TRAVEL TRAILERS
& FIFTH WHEELS



Palomino



ULTRA-LITE TRAVEL TRAILERS
& FIFTH WHEELS



STAMPEDE TRAVEL TRAILERS

Built with an ultra light weight all aluminum super structure, the Palomino Stampede line of hybrid travel trailers are aerodynamically designed for easy towing and handling without sacrificing interior living space. With large pass thru storage and uniquely designed rear sofa storage, the Palomino brand of trailers offer more storage than you'd thought possible in a light weight unit while still offering all of the amenities you expect from Palomino.



Palomino's Exclusive three flap system on the tent assembly provides not only a great seal but also provides extra protection for small children while in the bed area.



Stampede	Length	Exterior Width	Exterior Height	Hitch Weight	Axle Weight	Dry Weight	GVWR	Tire Size	Furnace Size BTU	Fresh Water	Grey Water	Black Water
S-15	15'4"	91"	101"	269 lbs.	2139 lbs.	2408 lbs.	3788 lbs.	14"	16,000	22 Gal.	31 Gal.	28Gal.
S-17	17'6"	91"	101"	326 lbs.	2322 lbs.	2648 lbs.	3850 lbs.	14"	20,000	38 Gal.	31 Gal.	28Gal.
S-21 SD	21'8"	91"	101"	488 lbs.	2948 lbs.	3436 lbs.	4916 lbs.	14"	20,000	38 Gal.	31 Gal.	28Gal.
S-21 SDSL	21'8"	91"	101"	613 lbs.	3106 lbs.	3719 lbs.	5031 lbs.	14"	20,000	38 Gal.	31 Gal.	28Gal.
S-21 SL	21'8"	91"	101"	482 lbs.	3171 lbs.	3653 lbs.	4912 lbs.	14"	20,000	38 Gal.	31 Gal.	28Gal.
S-235 SDSL	23'8"	91"	101"	569 lbs.	3352 lbs.	3921 lbs.	7603 lbs.	14"	20,000	38 Gal.	31 Gal.	28Gal.
S-23 SDSL	23'8"	91"	101"	525 lbs.	3365 lbs.	3890 lbs.	7556 lbs.	14"	20,000	38 Gal.	31 Gal.	28Gal.
S-246	23'8"	91"	101"	435 lbs.	3557 lbs.	3992 lbs.	7457 lbs.	14"	20,000	38 Gal.	31 Gal.	28Gal.



Ducted Roof Air in a Laminated Roof offers excellent cooling throughout.

STAMPEDE TRAVEL TRAILERS

Built with an ultra light weight all aluminum super structure, the Palomino Stampede line of hybrid travel trailers are aerodynamically designed for easy towing and handling without sacrificing interior living space. With large pass thru storage and uniquely designed rear sofa storage, the Palomino brand of trailers offer more storage than you'd thought possible in a light weight unit while still offering all of the amenities you expect from Palomino.



Palomino's Exclusive three flap system on the tent assembly provides not only a great seal but also provides extra protection for small children while in the bed area.

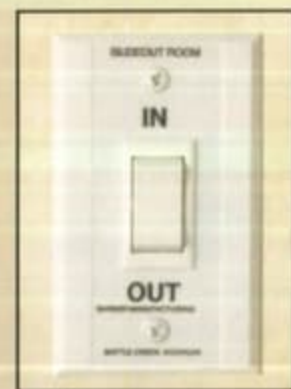
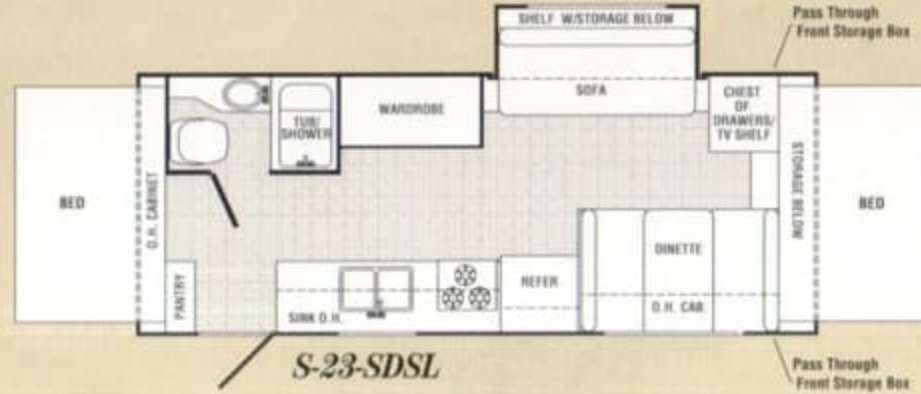
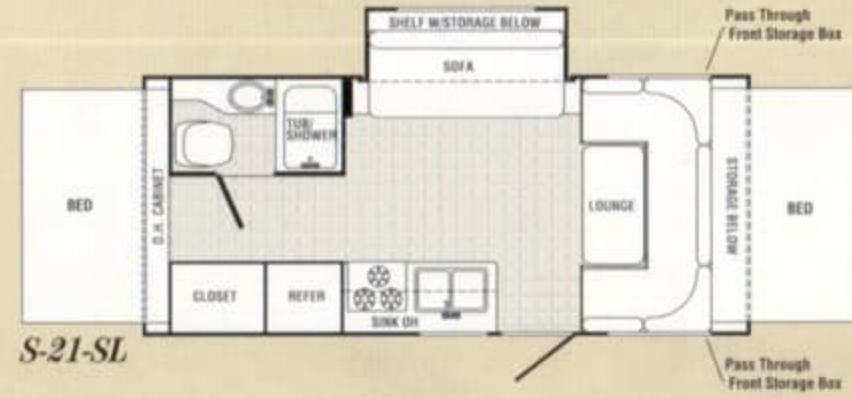
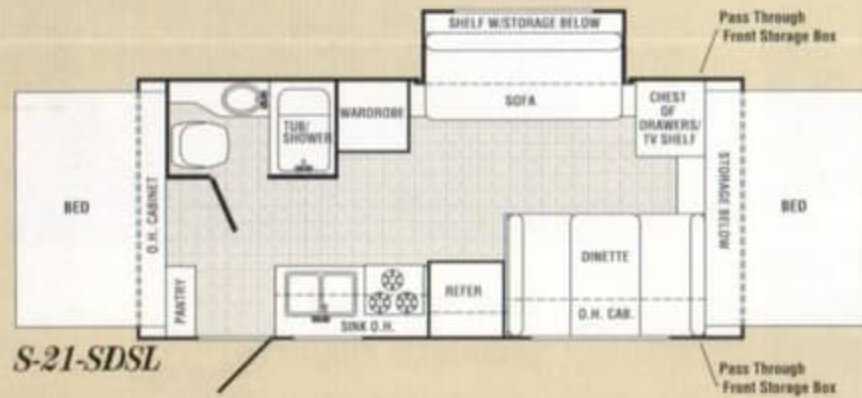
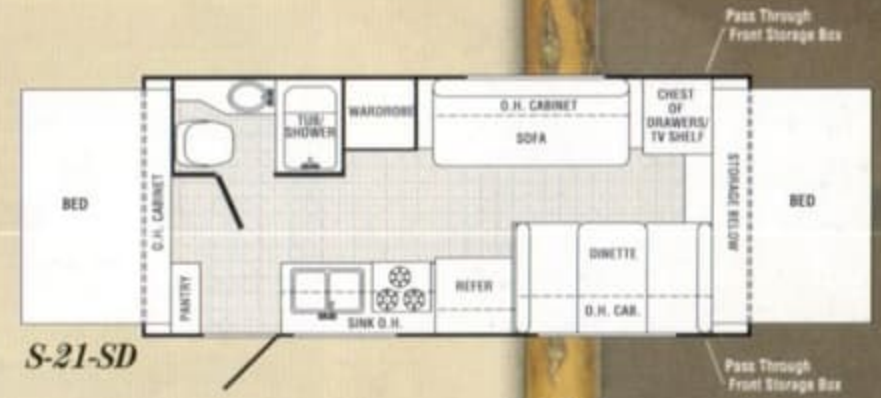
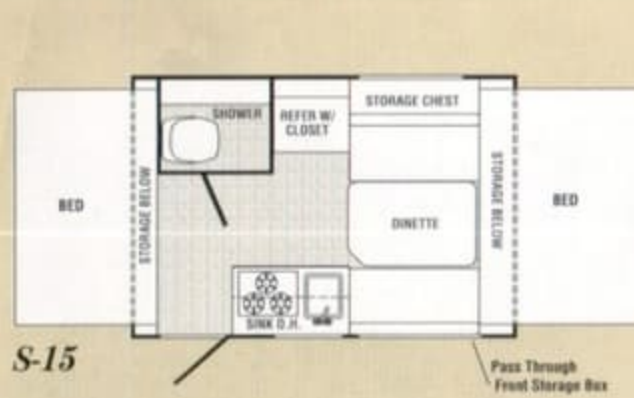


Stampede	Length	Exterior Width	Exterior Height	Hitch Weight	Axle Weight	Dry Weight	GVWR	Tire Size	Furnace Size BTU	Fresh Water	Grey Water	Black Water
S-15	15'4"	91"	101"	269 lbs.	2139 lbs.	2408 lbs.	3788 lbs.	14"	16,000	22 Gal.	31 Gal.	28Gal.
S-17	17'6"	91"	101"	326 lbs.	2322 lbs.	2648 lbs.	3850 lbs.	14"	20,000	38 Gal.	31 Gal.	28Gal.
S-21 SD	21'8"	91"	101"	488 lbs.	2948 lbs.	3436 lbs.	4916 lbs.	14"	20,000	38 Gal.	31 Gal.	28Gal.
S-21 SDSL	21'8"	91"	101"	613 lbs.	3106 lbs.	3719 lbs.	5031 lbs.	14"	20,000	38 Gal.	31 Gal.	28Gal.
S-21 SL	21'8"	91"	101"	482 lbs.	3171 lbs.	3653 lbs.	4912 lbs.	14"	20,000	38 Gal.	31 Gal.	28Gal.
S-235 SDSL	23'8"	91"	101"	569 lbs.	3352 lbs.	3921 lbs.	7603 lbs.	14"	20,000	38 Gal.	31 Gal.	28Gal.
S-23 SDSL	23'8"	91"	101"	525 lbs.	3365 lbs.	3890 lbs.	7556 lbs.	14"	20,000	38 Gal.	31 Gal.	28Gal.
S-246	23'8"	91"	101"	435 lbs.	3557 lbs.	3992 lbs.	7457 lbs.	14"	20,000	38 Gal.	31 Gal.	28Gal.

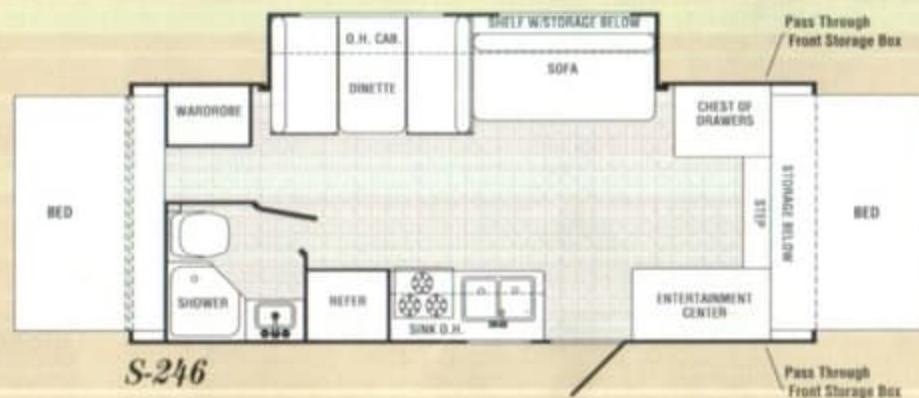


Ducted Roof Air in a Laminated Roof offers excellent cooling throughout.

STAMPEDE TRAVEL TRAILERS



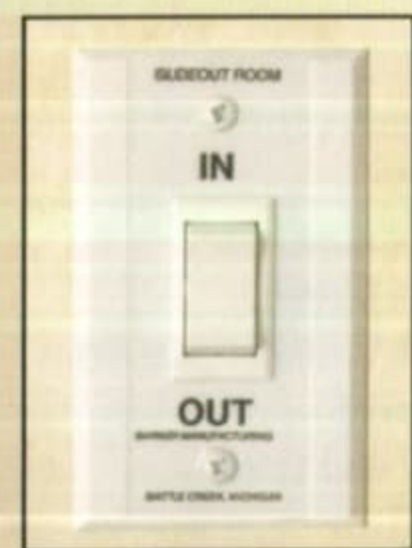
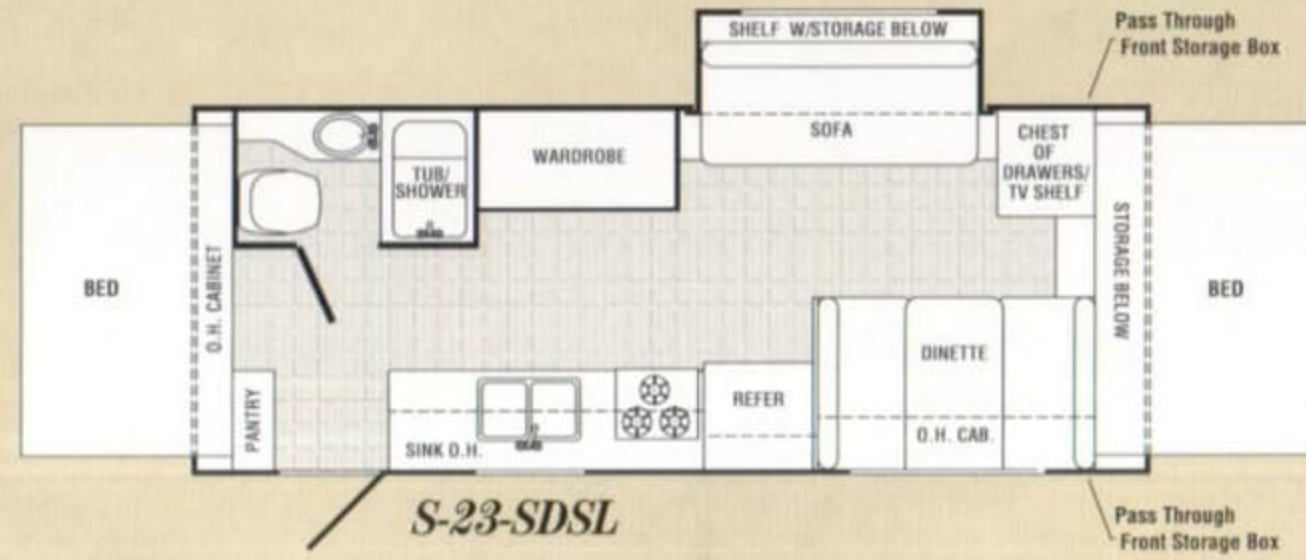
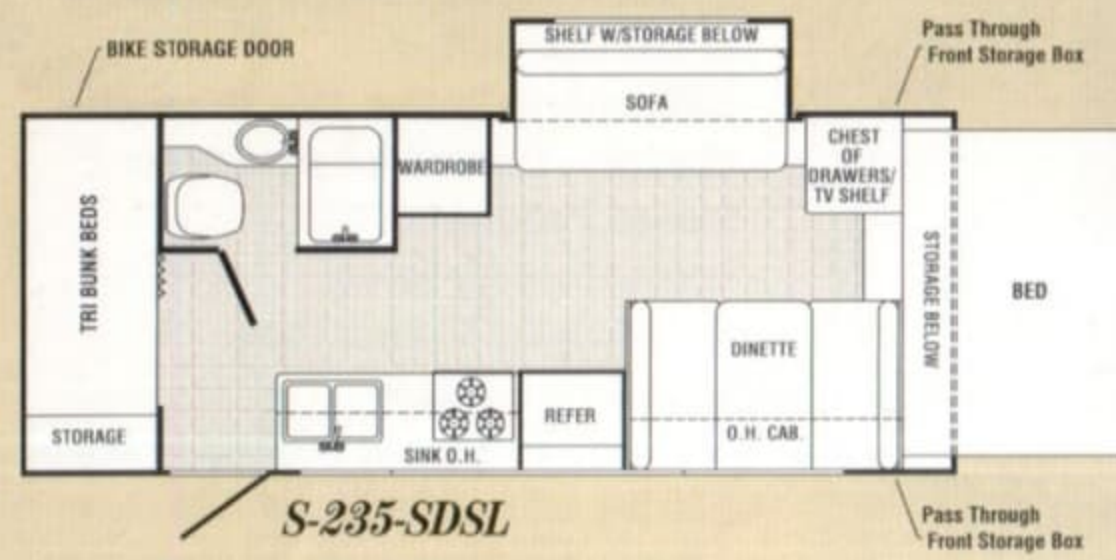
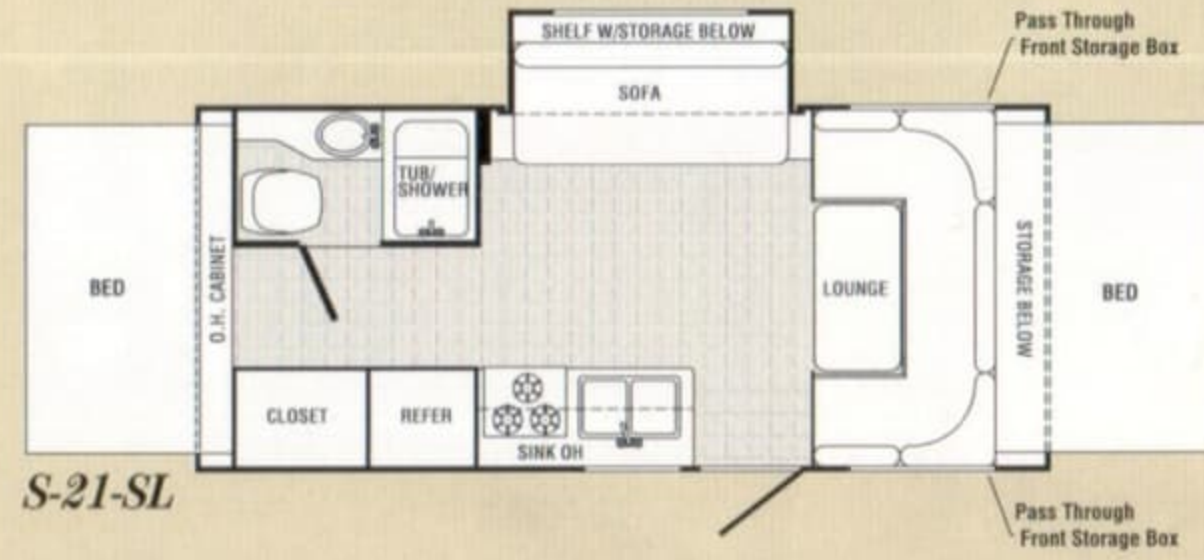
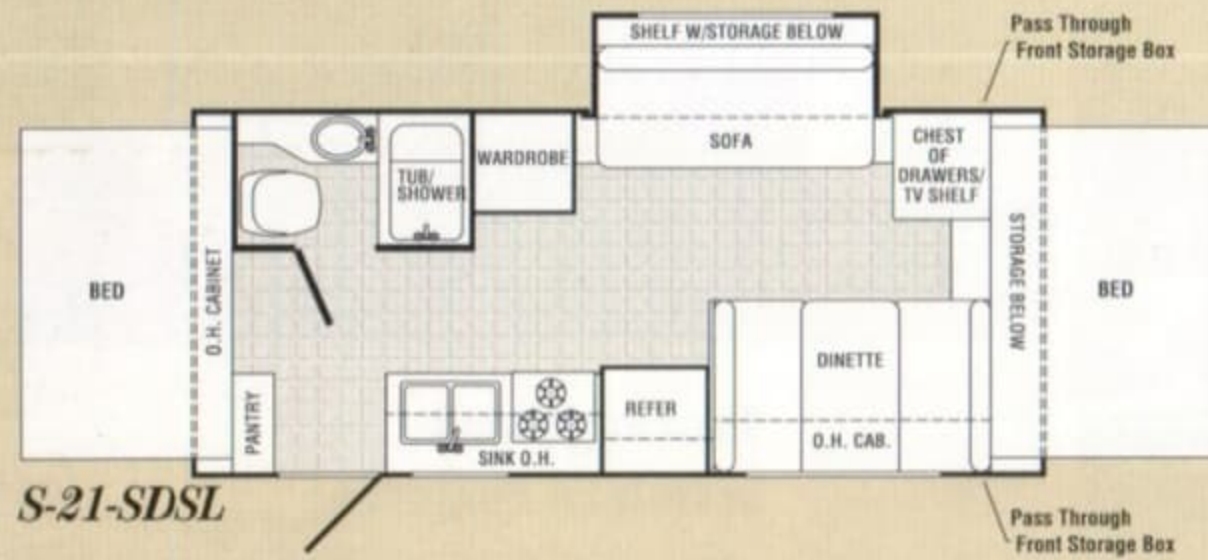
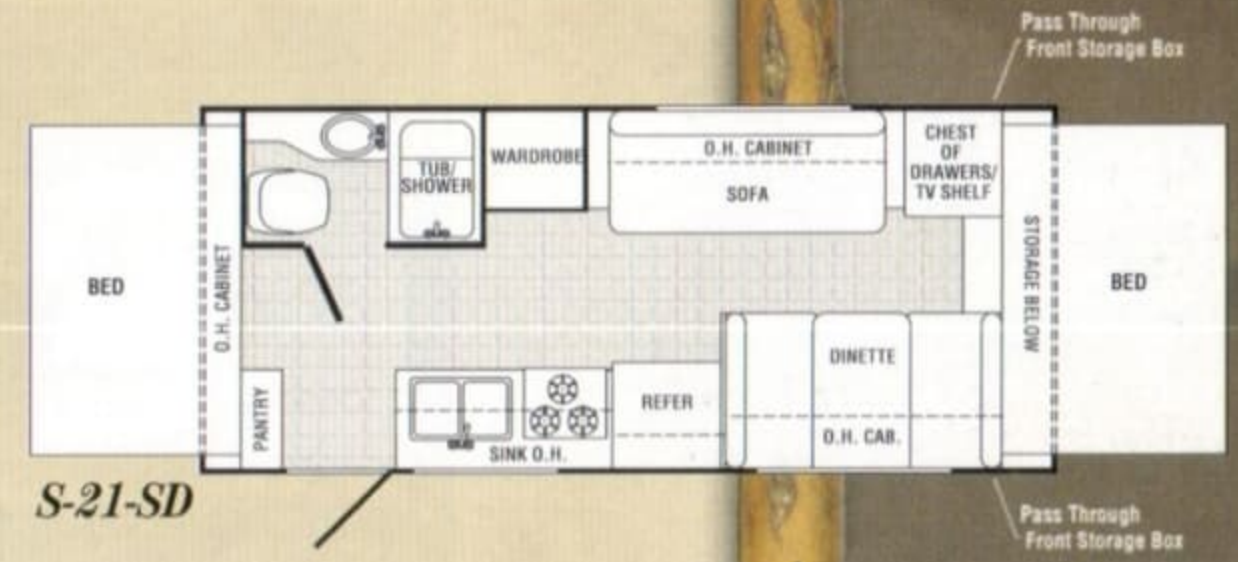
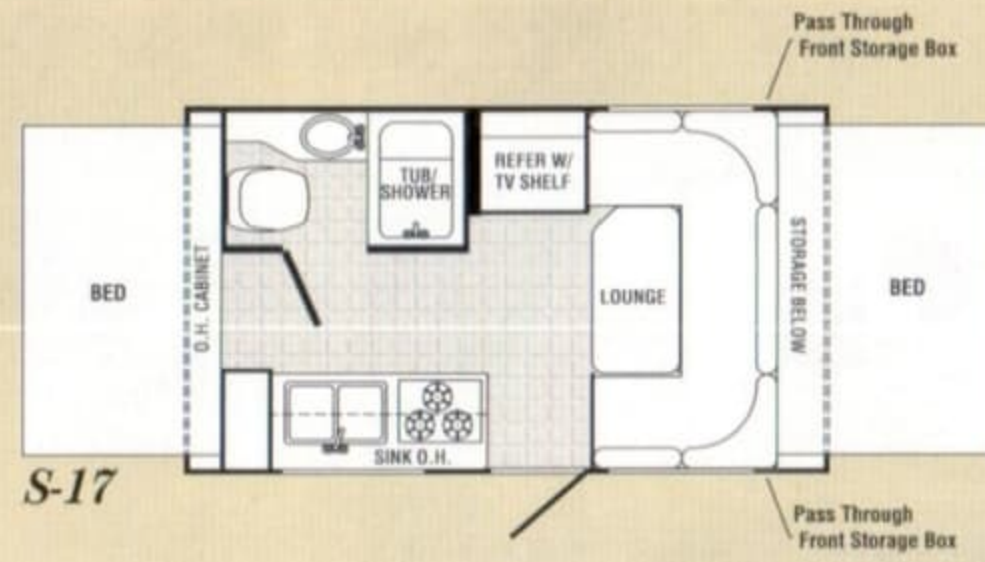
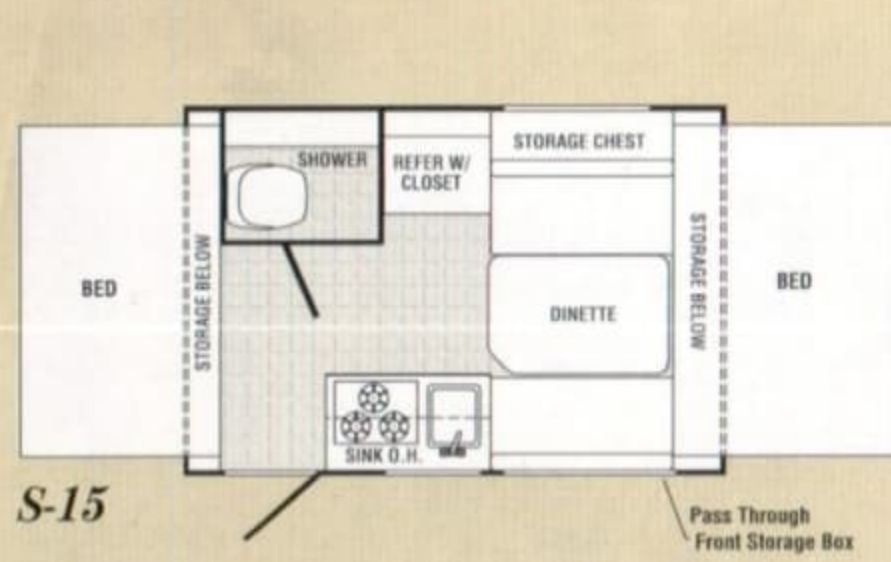
Operating our slide rooms are as easy as pushing a button.



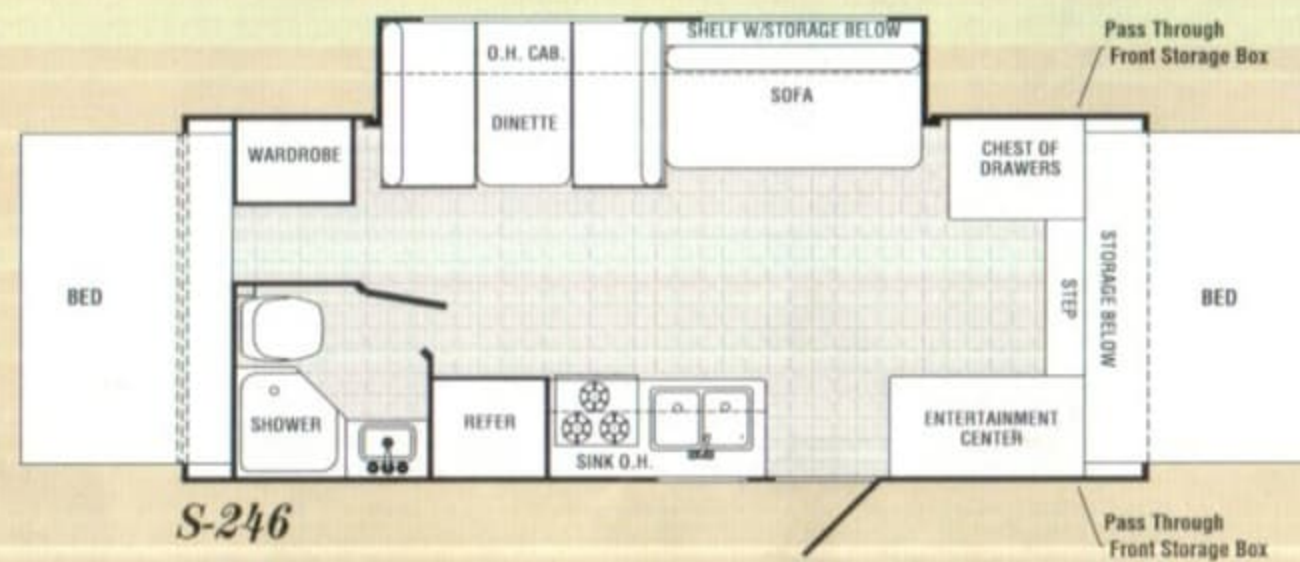
Stampede Standard Features

- Aluminum Superstructure
- Laminated Filon Fiberglass Walls
- EPDM Rubber Roof
- Electric Power Slide Out System
- Independent Torsion Axle Suspension
- Ducted Furnace
- Ducted Roof Air Ready (Exc. S-15, S-17)
- Wall Mounted Monitor Panel
- 3 Burner Gas Range
- 6 Gallon Gas/Electric DSI Water Heater
- 2- 20 lbs. LP Gas Bottles w/ ABS Cover
- 4 B.A.L. Stabilizer Jacks w/ Sand Pads
- 14" Tires
- A&E Awning
- TV Antenna w/ Cable Hook Up
- Safety Glass
- Outside Service Lights (3)
- Bathroom Sky Light
- One Piece Tub Surround (Ex. S-15)
- Hot & Cold Outside Shower
- Designer Valances w/ Lambrequin Arms
- Fabric Window Shades
- Spare Tire, Carrier and Cover
- One Piece Sink Cover
- Stove Cover
- Bunk Light w/ Fan

STAMPEDE TRAVEL TRAILERS



Operating our slide rooms are as easy as pushing a button.



Stampede Standard Features

- Aluminum Superstructure
- Laminated Filon Fiberglass Walls
- EPDM Rubber Roof
- Electric Power Slide Out System
- Independent Torsion Axle Suspension
- Ducted Furnace
- Ducted Roof Air Ready (Exc. S-15, S-17)
- Wall Mounted Monitor Panel
- 3 Burner Gas Range
- 6 Gallon Gas/Electric DSI Water Heater
- 2- 20 lbs. LP Gas Bottles w/ ABS Cover
- 4 B.A.L. Stabilizer Jacks w/ Sand Pads
- 14" Tires
- A&E Awning
- TV Antenna w/ Cable Hook Up
- Safety Glass
- Outside Service Lights (3)
- Bathroom Sky Light
- One Piece Tub Surround (Ex. S-15)
- Hot & Cold Outside Shower
- Designer Valances w/ Lambrequin Arms
- Fabric Window Shades
- Spare Tire, Carrier and Cover
- One Piece Sink Cover
- Stove Cover
- Bunk Light w/ Fan

THOROUGHBRED TRAVEL TRAILERS

The Palomino Thoroughbred is an ultra light weight travel trailer designed for exceptional towing and handling. Built with an all aluminum superstructure for durability the Thoroughbred is a leader in quality and craftsmanship. Well designed floor plans with storage galore will accommodate the needs of your family for years to come.



Thoroughbred Standard Features

- Aluminum Superstructure
- Laminated Filon Fiberglass Sidewalls
- EPDM Rubber Roof
- Independent Torsion Axle Suspension
- Electric – Power Slide out System
- Ducted Furnace
- Ducted Roof Air Ready
- Wall Mounted Monitor Panel
- 3 Burner Gas Range
- 6 Gallon Gas/Electric DSI Water Heater
- 2-20 lbs. LP Gas Bottles w/ ABS Cover
- 4 B.A.L. Stabilizer Jacks w/ Sand Pads
- 14" Tires
- A&E Awning
- TV Antenna w/ Cable Hook-up
- Outside Service lights (3)
- Bathroom Sky Light
- One Piece Tub Surround
- Hot & Cold Outside Shower
- Designer Valance w/ Lambrequin Arms
- Fabric Window Shades
- Spare Tire, Carrier and Cover
- Stove Cover
- One-Piece Sink Cover

Thoroughbred	Length	Exterior Width	Exterior Height	Hitch Weight	Axle Weight	Dry Weight	GVWR	Tire Size	Furnace Size BTU	Fresh Water	Grey Water	Black Water
T-21 FB	21'3"	91"	101"	348 lbs.	2907 lbs.	3255 lbs.	4761 lbs.	14"	20,000	38 Gal.	31 Gal.	28Gal.
T-21 FBSL	21'3"	91"	101"	349 lbs.	3210 lbs.	3559 lbs.	4772 lbs.	14"	20,000	38 Gal.	31 Gal.	28Gal.
T-23 FB	23'3"	91"	101"	231 lbs.	3176 lbs.	3407 lbs.	4793 lbs.	14"	20,000	38 Gal.	31 Gal.	28Gal.
T-23 BH	23'3"	91"	101"	369 lbs.	3115 lbs.	3484 lbs.	4793 lbs.	14"	20,000	38 Gal.	31 Gal.	28Gal.
T-25 FBSL	25'3"	91"	101"	383 lbs.	3649 lbs.	4032 lbs.	7406 lbs.	14"	20,000	38 Gal.	31 Gal.	28Gal.
T-26 BHSL	26'9"	91"	101"	328 lbs.	3881 lbs.	4209 lbs.	5788 lbs.	14"	20,000	38 Gal.	31 Gal.	28Gal.
T-257	25'8"	91"	101"	454 lbs.	3365 lbs.	3819 lbs.	7467 lbs.	14"	20,000	38 Gal.	31 Gal.	28Gal.
T-261	27'2"	91"	101"	373 lbs.	3472 lbs.	3845 lbs.	7396 lbs.	14"	20,000	38 Gal.	31 Gal.	28Gal.
T-262	28'8"	91"	101"	537 lbs.	3826 lbs.	4363 lbs.	7565 lbs.	14"	20,000	38 Gal.	31 Gal.	28Gal.
T-271	31'2"	91"	101"	401 lbs.	4433 lbs.	4834 lbs.	7422 lbs.	14"	20,000	38 Gal.	31 Gal.	28Gal.
T-275	31'2"	91"	101"	572 lbs.	4212 lbs.	4784 lbs.	7472 lbs.	14"	20,000	38 Gal.	31 Gal.	28Gal.

THOROUGHBRED TRAVEL TRAILERS

The Palomino Thoroughbred is an ultra light weight travel trailer designed for exceptional towing and handling. Built with an all aluminum superstructure for durability the Thoroughbred is a leader in quality and craftsmanship. Well designed floor plans with storage galore will accommodate the needs of your family for years to come.



Thoroughbred Standard Features

- Aluminum Superstructure
- Laminated Filon Fiberglass Sidewalls
- EPDM Rubber Roof
- Independent Torsion Axle Suspension
- Electric – Power Slide out System
- Ducted Furnace
- Ducted Roof Air Ready
- Wall Mounted Monitor Panel
- 3 Burner Gas Range
- 6 Gallon Gas/Electric DSI Water Heater
- 2-20 lbs. LP Gas Bottles w/ ABS Cover
- 4 B.A.L. Stabilizer Jacks w/ Sand Pads
- 14" Tires
- A&E Awning
- TV Antenna w/ Cable Hook-up
- Outside Service lights (3)
- Bathroom Sky Light
- One Piece Tub Surround
- Hot & Cold Outside Shower
- Designer Valance w/ Lambrequin Arms
- Fabric Window Shades
- Spare Tire, Carrier and Cover
- Stove Cover
- One-Piece Sink Cover

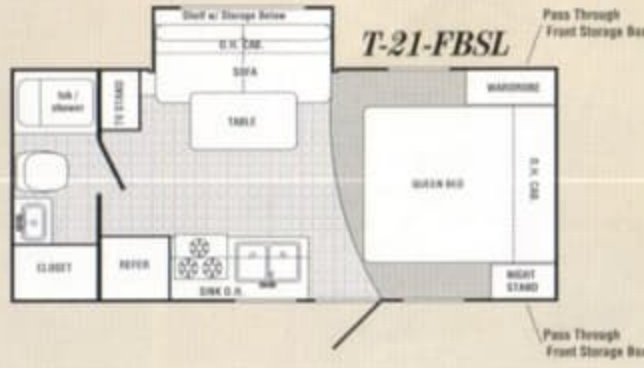
Thoroughbred	Length	Exterior Width	Exterior Height	Hitch Weight	Axle Weight	Dry Weight	GVWR	Tire Size	Furnace Size BTU	Fresh Water	Grey Water	Black Water
T-21 FB	21'3"	91"	101"	348 lbs.	2907 lbs.	3255 lbs.	4761 lbs.	14"	20,000	38 Gal.	31 Gal.	28Gal.
T-21 FB SL	21'3"	91"	101"	349 lbs.	3210 lbs.	3559 lbs.	4772 lbs.	14"	20,000	38 Gal.	31 Gal.	28Gal.
T-23 FB	23'3"	91"	101"	231 lbs.	3176 lbs.	3407 lbs.	4793 lbs.	14"	20,000	38 Gal.	31 Gal.	28Gal.
T-23 BH	23'3"	91"	101"	369 lbs.	3115 lbs.	3484 lbs.	4793 lbs.	14"	20,000	38 Gal.	31 Gal.	28Gal.
T-25 FB SL	25'3"	91"	101"	383 lbs.	3649 lbs.	4032 lbs.	7406 lbs.	14"	20,000	38 Gal.	31 Gal.	28Gal.
T-26 BH SL	26'9"	91"	101"	328 lbs.	3881 lbs.	4209 lbs.	5788 lbs.	14"	20,000	38 Gal.	31 Gal.	28Gal.
T-257	25'8"	91"	101"	454 lbs.	3365 lbs.	3819 lbs.	7467 lbs.	14"	20,000	38 Gal.	31 Gal.	28Gal.
T-261	27'2"	91"	101"	373 lbs.	3472 lbs.	3845 lbs.	7396 lbs.	14"	20,000	38 Gal.	31 Gal.	28Gal.
T-262	28'8"	91"	101"	537 lbs.	3826 lbs.	4363 lbs.	7565 lbs.	14"	20,000	38 Gal.	31 Gal.	28Gal.
T-271	31'2"	91"	101"	401 lbs.	4433 lbs.	4834 lbs.	7422 lbs.	14"	20,000	38 Gal.	31 Gal.	28Gal.
T-275	31'2"	91"	101"	572 lbs.	4212 lbs.	4784 lbs.	7472 lbs.	14"	20,000	38 Gal.	31 Gal.	28Gal.

THOROUGHbred TRAVEL TRAILERS

T-21-FB



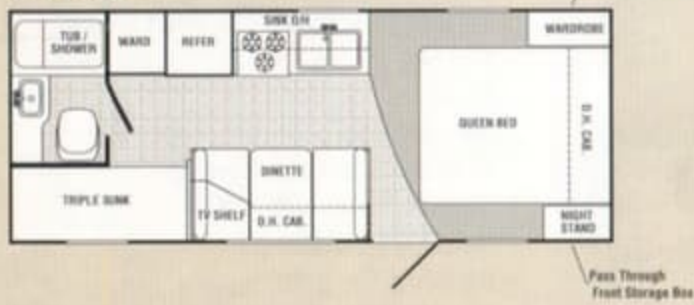
T-21-FBSL



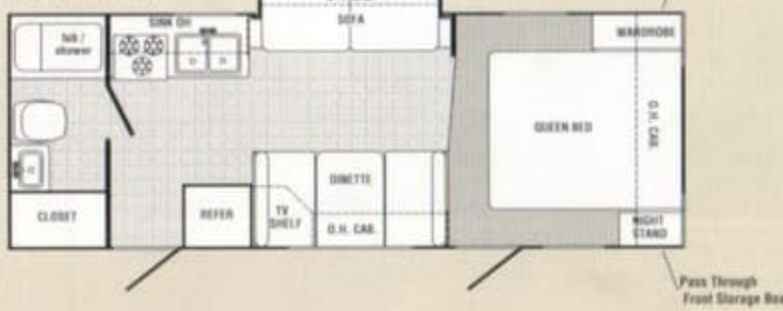
T-23-FB



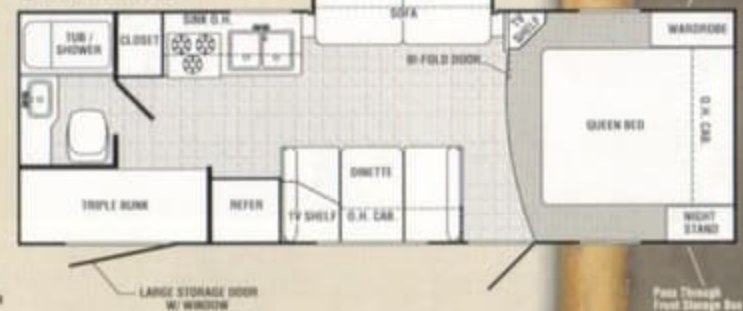
T-23-BH



T-25-FBSL



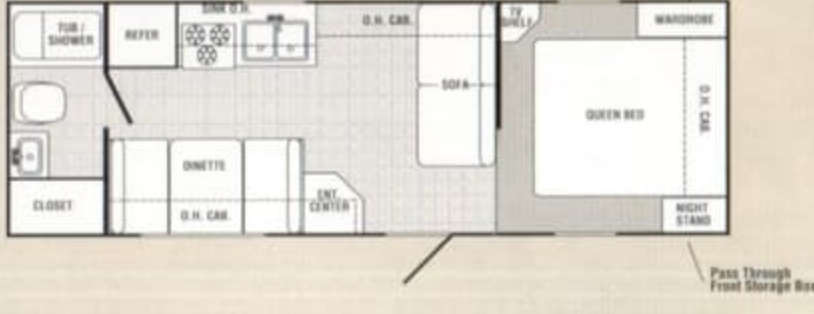
T-26-BHSL



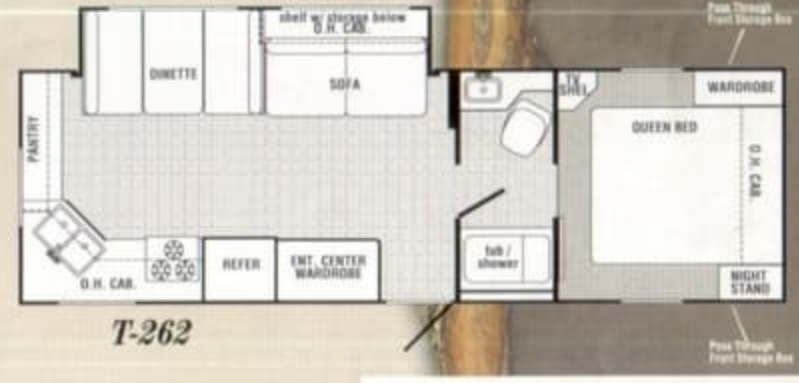
T-257



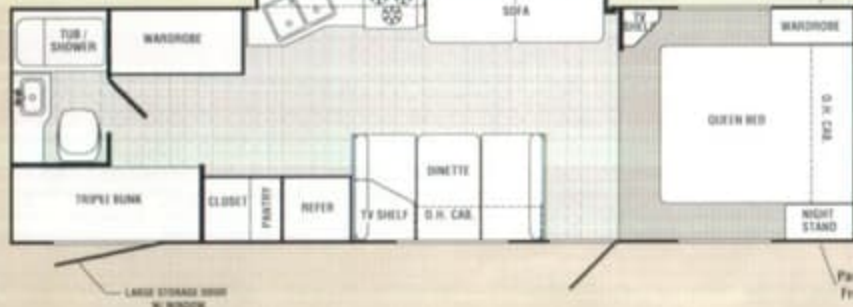
T-261



T-262



T-271



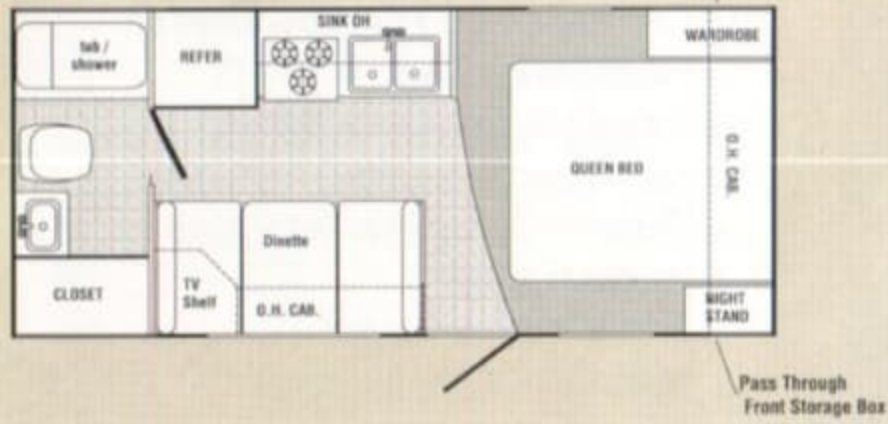
T-275



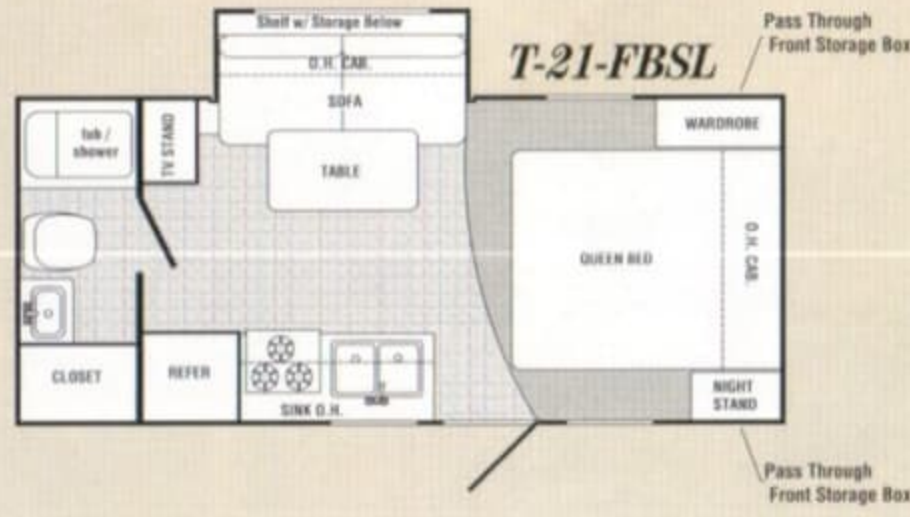
The huge exterior storage area gives you extra room for gear and equipment.

THOROUGHbred TRAVEL TRAILERS

T-21-FB



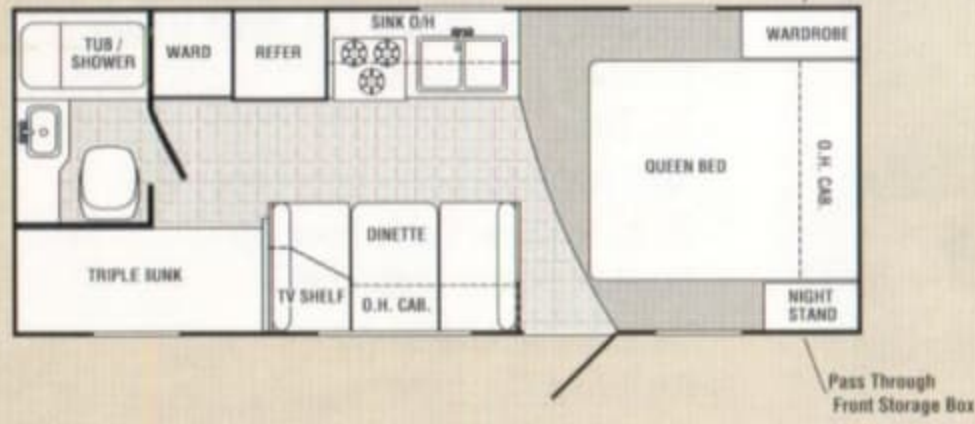
T-21-FBSL



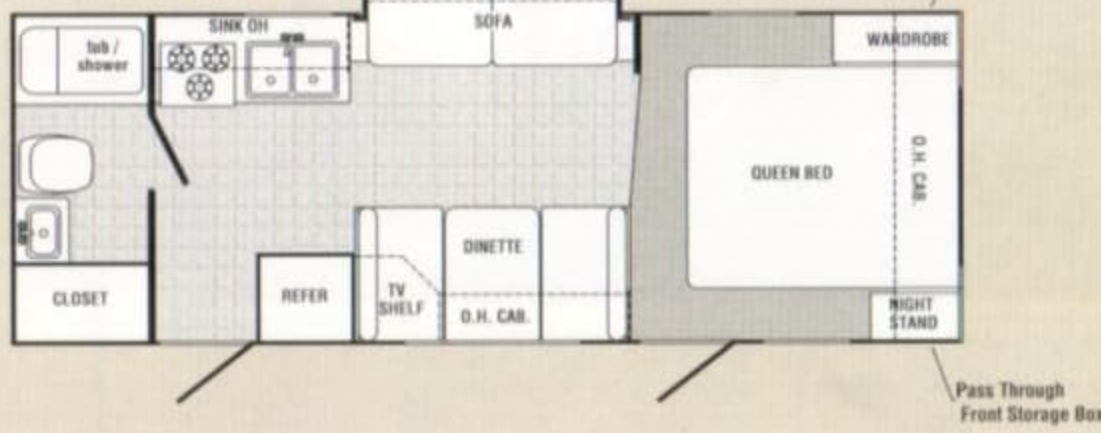
T-23-FB



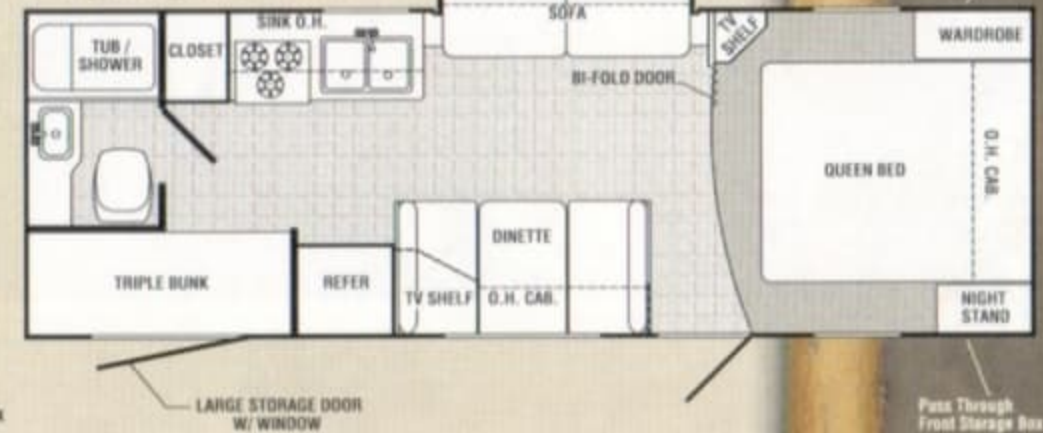
T-23-BH



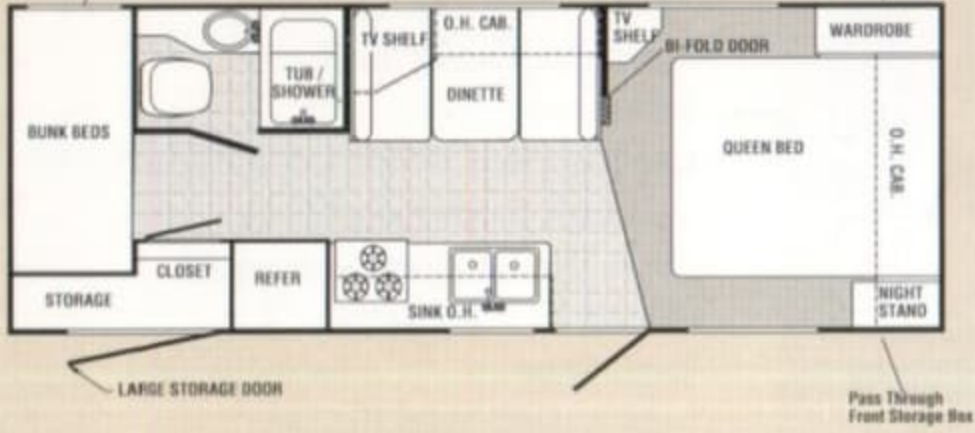
T-25-FBSL



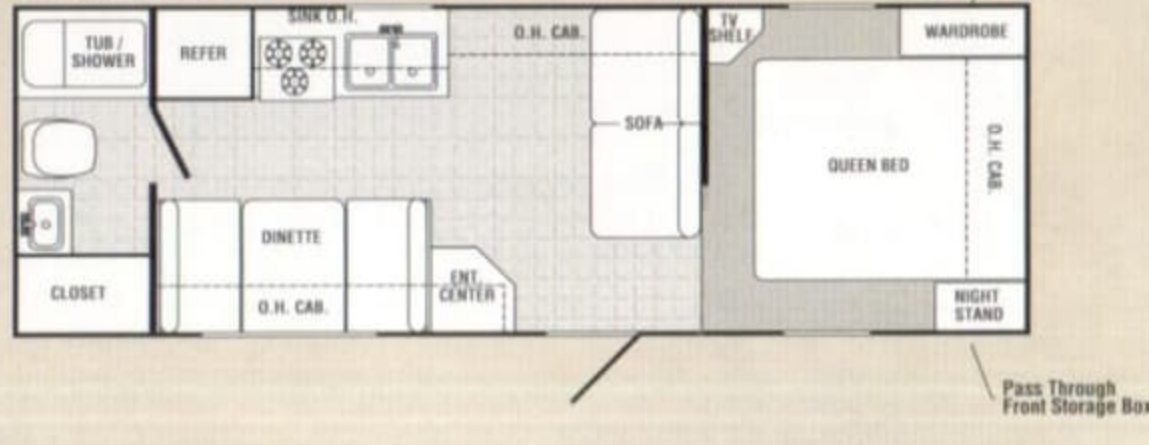
T-26-BHSL



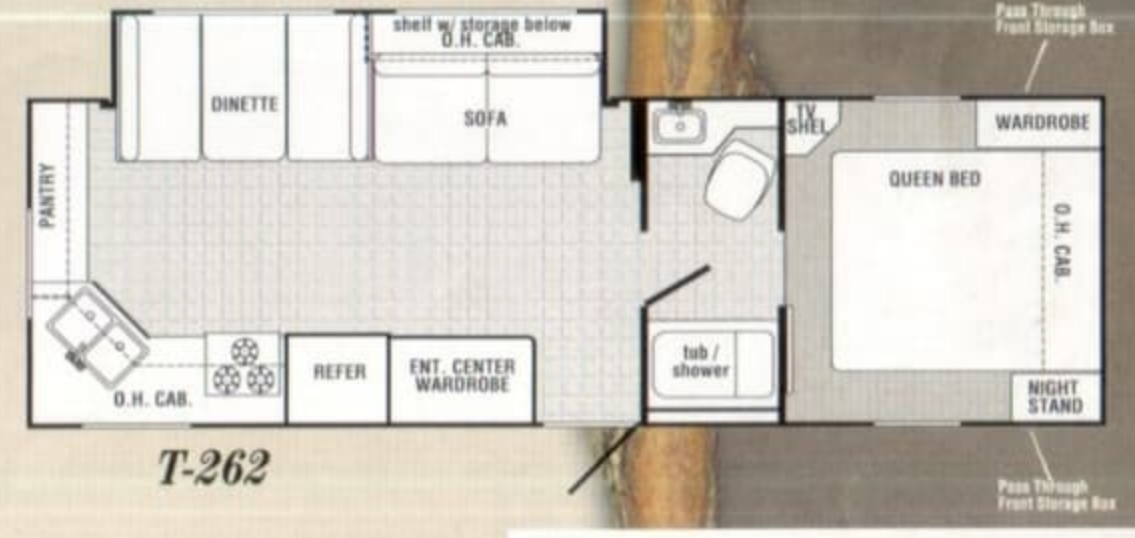
T-257



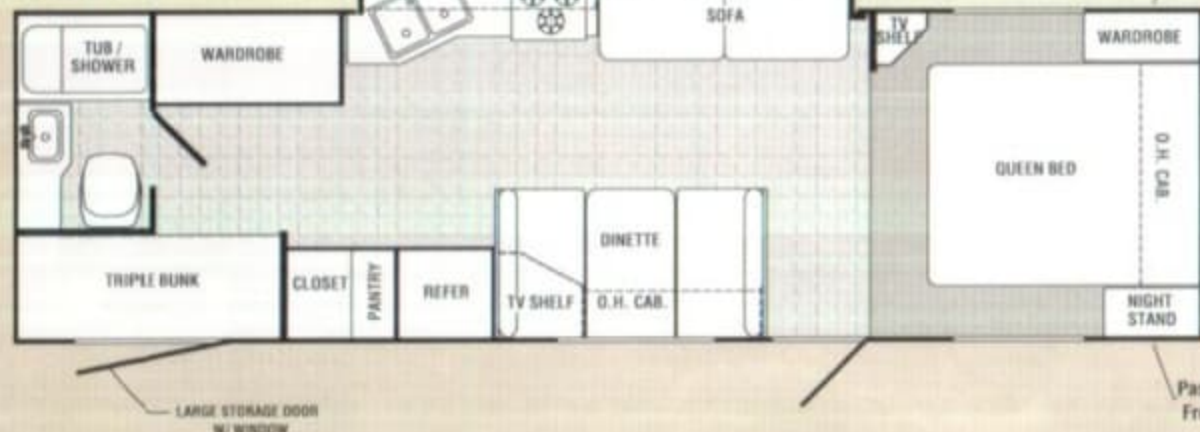
T-261



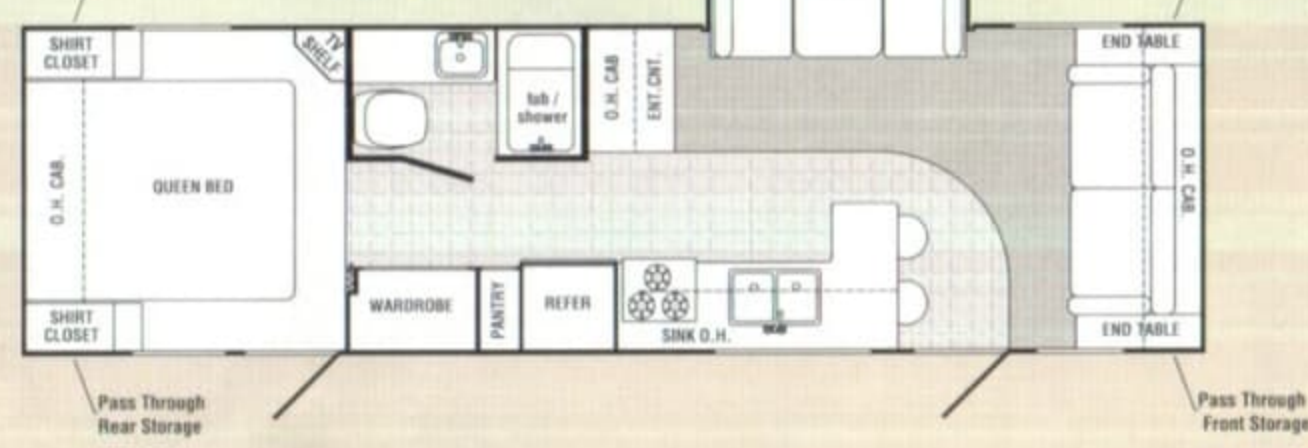
T-262



T-271



T-275

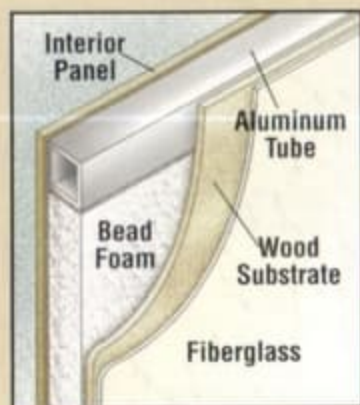


The huge exterior storage area gives you extra room for gear and equipment.

THOROUGHbred FIFTH WHEELS

High end quality and light weight design are achieved in the Thoroughbred Fifth Wheel. The Thoroughbred line of fifth wheels gives you both luxury and towability at an affordable price.

Thoroughbred features an all aluminum framed laminated fiberglass superstructure (walls, roof, & floor). This superior style of construction matches the luxurious and sophisticated interiors to offer a great value for your investment.



Thoroughbred fifth wheels have a laundry shoot conveniently located in the bathroom area.



Thoroughbred fifth wheels offer a walk thru bath with a large neo-angle shower and glass doors. (ex. 826 RK)

Fifth Wheels	Length	Exterior Width	Exterior Height	Hitch Weight	Axle Weight	Dry Weight	GVWR	Tire Size	Furnace Size BTU	Fresh Water	Grey Water	Black Water
826 RK	26'2"	96"	11'10"	1232 lbs.	4863 lbs.	6095 lbs.	10,032	15"	30,000	38 Gal.	72 Gal.	36 Gal.
829 RL	29'5"	96"	11'10"	1346 lbs.	5186 lbs.	6532 lbs.	10,146	15"	30,000	38 Gal.	36 Gal.	36 Gal.
829 BH	29'5"	96"	11'10"	1396 lbs.	5378 lbs.	6774 lbs.	10,196	15"	30,000	38 Gal.	36 Gal.	36 Gal.

Thoroughbred Fifth Wheel Standard Features

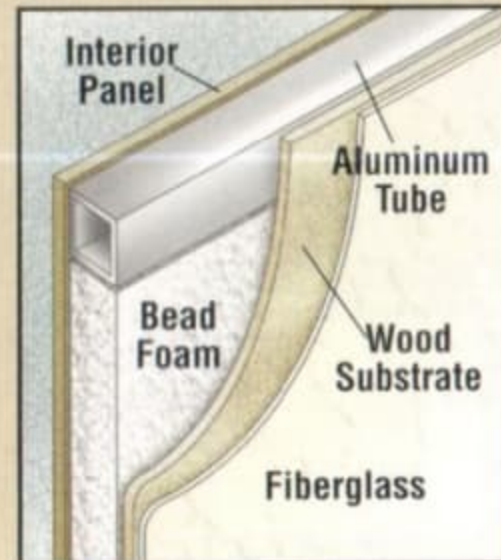
- Aluminum Superstructure
- Laminated Filon Fiberglass Sidewalls
- EPDM Rubber Roof
- Spring Axle Suspension System
- Flush Floor Slide Outs
- Electric - Power Slide Out System
- Ducted Furnace
- Ducted Roof Air Ready
- Wall Mounted Monitor Panel
- Enclosed Under Belly
- Thermostatically Controlled Heated Under Belly
- 3 Burner Gas Range
- 6 Gallon Gas/Electric DSI Water Heater
- 2-30 Lbs. LP Bottles
- 15" Tires
- A&E Awning
- TV Antenna w/ Cable Hook Up
- Outside Service Lights (3)
- Outside Scare Light (2)
- Bathroom Sky Light
- One-Piece Tub Surround
- Hot & Cold Outside Shower
- Designer Valances w/ Lambrequin Arms
- Fabric Window Shades
- Spare Tire, Carrier and Cover
- Stove Cover
- One-Piece Sink Cover / Cutting Board
- Neo-Angle Shower (Ex 826 RK)
- China Toilet w/ Spray Attachment
- 8 Cubic Foot Refrigerator
- Triple Step
- Lend-A-Hand Assist Handle
- Pillow Top Mattress
- Swivel Chairs where Available
- Pillow Shams



THOROUGHbred FIFTH WHEELS

High end quality and light weight design are achieved in the Thoroughbred Fifth Wheel. The Thoroughbred line of fifth wheels gives you both luxury and towability at an affordable price.

Thoroughbred features an all aluminum framed laminated fiberglass superstructure (walls, roof, & floor). This superior style of construction matches the luxurious and sophisticated interiors to offer a great value for your investment.



Thoroughbred fifth wheels have a laundry shoot conveniently located in the bathroom area.



Thoroughbred fifth wheels offer a walk thru bath with a large neo-angle shower and glass doors. (ex. 826 RK)

Thoroughbred Fifth Wheel Standard Features

- Aluminum Superstructure
- Laminated Filon Fiberglass Sidewalls
- EPDM Rubber Roof
- Spring Axle Suspension System
- Flush Floor Slide Outs
- Electric - Power Slide Out System
- Ducted Furnace
- Ducted Roof Air Ready
- Wall Mounted Monitor Panel
- Enclosed Under Belly
- Thermostatically Controlled Heated Under Belly
- 3 Burner Gas Range
- 6 Gallon Gas/Electric DSI Water Heater
- 2-30 Lbs. LP Bottles
- 15" Tires
- A&E Awning
- TV Antenna w/ Cable Hook Up
- Outside Service Lights (3)
- Outside Scare Light (2)
- Bathroom Sky Light
- One-Piece Tub Surround
- Hot & Cold Outside Shower
- Designer Valances w/ Lambrequin Arms
- Fabric Window Shades
- Spare Tire, Carrier and Cover
- Stove Cover
- One-Piece Sink Cover / Cutting Board
- Neo-Angle Shower (Ex 826 RK)
- China Toilet w/ Spray Attachment
- 8 Cubic Foot Refrigerator
- Triple Step
- Lend-A-Hand Assist Handle
- Pillow Top Mattress
- Swivel Chairs where Available
- Pillow Shams

Fifth Wheels	Length	Exterior Width	Exterior Height	Hitch Weight	Axle Weight	Dry Weight	GVWR	Tire Size	Furnace Size BTU	Fresh Water	Grey Water	Black Water
826 RK	26'2"	96"	11'10"	1232 lbs.	4863 lbs.	6095 lbs.	10,032	15"	30,000	38 Gal.	72 Gal.	36 Gal.
829 RL	29'5"	96"	11'10"	1346 lbs.	5186 lbs.	6532 lbs.	10,146	15"	30,000	38 Gal.	36 Gal.	36 Gal.
829 BH	29'5"	96"	11'10"	1396 lbs.	5378 lbs.	6774 lbs.	10,196	15"	30,000	38 Gal.	36 Gal.	36 Gal.



STAMPEDE & THOROUGHbred FEATURES



Palomino Stampede and Thoroughbred Travel Trailers feature designer valances with lambrequin arms and fabric window shades.



Exterior 110 Volt Receptacle. G.F.C.I. Protected



Deluxe self storing entry step for easier and safer use of your camper.



An outside shower with hot and cold water makes cleaning up a breeze and keeps dirt and messes outside.



An optional 10 bladed, 3 speed Create-A-Breeze Fantastic Vent keeps air circulating.



Palomino offers all the amenities of home such as a digital AM/FM CD player with cassette.



An optional outside grill and work table make cooking outside enjoyable.



Outside Service lights at the hitch area and drain valves make connecting in the dark safe and easy



The optional sliding A.B.S. storage trays make packing gear and equipment easy.



Roof mounted air conditioner available option on all models.



A one-piece molded tub surround helps protect shower walls and allows for easy cleaning.



An optional water filtration system filters all in coming water.



B.A.L. crank down jacks with sand pads are a standard feature on all Stampede and Thoroughbred travel trailers.



Protect your spare tire with an attractive vinyl cover.

STAMPEDE & THOROUGHBRED FEATURES



Palomino Stampede and Thoroughbred Travel Trailers feature designer valances with lambrequin arms and fabric window shades.



Exterior 110 Volt Receptacle. G.F.C.I. Protected



Deluxe self storing entry step for easier and safer use of your camper.



An outside shower with hot and cold water makes cleaning up a breeze and keeps dirt and messes outside.



An optional 10 bladed, 3 speed Create-A-Breeze Fantastic Vent keeps air circulating.



Palomino offers all the amenities of home such as a digital AM/FM CD player with cassette.



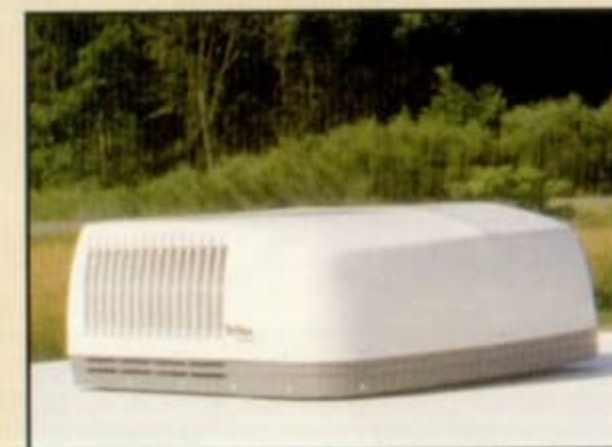
An optional outside grill and work table make cooking outside enjoyable.



Outside Service lights at the hitch area and drain valves make connecting in the dark safe and easy



The optional sliding A.B.S. storage trays make packing gear and equipment easy.



Roof mounted air conditioner available option on all models.



A one-piece molded tub surround helps protect shower walls and allows for easy cleaning.



An optional water filtration system filters all in coming water.



B.A.L. crank down jacks with sand pads are a standard feature on all Stampede and Thoroughbred travel trailers.



Protect your spare tire with an attractive vinyl cover.

Dare to Compare Check List

Palomino

offers many

great features

as standard

equipment.

Make sure

you're getting

the most for

your RV

investment.

	Palomino	Competition		Palomino	Competition
Construction Features			Interior Features		
1 Year Bumper to Hitch Warranty	<input checked="" type="checkbox"/>	<input type="checkbox"/>	Gas/Electric DSI Water Heater	<input checked="" type="checkbox"/>	<input type="checkbox"/>
3 Year Structural Warranty	<input checked="" type="checkbox"/>	<input type="checkbox"/>	Hard Valances w/Lambrequins	<input checked="" type="checkbox"/>	<input type="checkbox"/>
12 Year Rubber Roof Warranty	<input checked="" type="checkbox"/>	<input type="checkbox"/>	Fabrics Blinds on all Windows	<input checked="" type="checkbox"/>	<input type="checkbox"/>
5 Year Chassis Warranty	<input checked="" type="checkbox"/>	<input type="checkbox"/>	Tile-like Linoleum	<input checked="" type="checkbox"/>	<input type="checkbox"/>
5 Year Tent Fabric Warranty	<input checked="" type="checkbox"/>	<input type="checkbox"/>	Ducted Heat	<input checked="" type="checkbox"/>	<input type="checkbox"/>
AL-KO Independent Suspension	<input checked="" type="checkbox"/>	<input type="checkbox"/>	Wall Mounted Monitor Panel	<input checked="" type="checkbox"/>	<input type="checkbox"/>
Welded Aluminum Structure	<input checked="" type="checkbox"/>	<input type="checkbox"/>	Cable TV Jack	<input checked="" type="checkbox"/>	<input type="checkbox"/>
Laminated Vacuum Bonded Sidewall	<input checked="" type="checkbox"/>	<input type="checkbox"/>	TV Shelf and Outlet in Bedroom	<input checked="" type="checkbox"/>	<input type="checkbox"/>
Venture I-Beam Frame	<input checked="" type="checkbox"/>	<input type="checkbox"/>	Gas Support Struts on Bed	<input checked="" type="checkbox"/>	<input type="checkbox"/>
14" Tires	<input checked="" type="checkbox"/>	<input type="checkbox"/>	Power Roof Vent in Bedroom	<input checked="" type="checkbox"/>	<input type="checkbox"/>
Safety Glass	<input checked="" type="checkbox"/>	<input type="checkbox"/>	Fiber Link Bathtub	<input checked="" type="checkbox"/>	<input type="checkbox"/>
Corrosion Resistant ABS Bottle Cover	<input checked="" type="checkbox"/>	<input type="checkbox"/>	Fiber Link One Piece Tub Surround	<input checked="" type="checkbox"/>	<input type="checkbox"/>
"Rain Gutter" Moldings w/Drip Spouts	<input checked="" type="checkbox"/>	<input type="checkbox"/>	Large, Double Bowl Sinks	<input checked="" type="checkbox"/>	<input type="checkbox"/>
Ducted Air Conditioning Ready	<input checked="" type="checkbox"/>	<input type="checkbox"/>	Molded Cutting Board Sink Covers	<input checked="" type="checkbox"/>	<input type="checkbox"/>
Under Floor Holding Tanks	<input checked="" type="checkbox"/>	<input type="checkbox"/>	High Rise Residential Style Faucet	<input checked="" type="checkbox"/>	<input type="checkbox"/>
26" Radius Entry Door	<input checked="" type="checkbox"/>	<input type="checkbox"/>	Standard Features		
Large Pass Thru Storage (Most Models)	<input checked="" type="checkbox"/>	<input type="checkbox"/>	Spare Tire w/Cover	<input checked="" type="checkbox"/>	<input type="checkbox"/>
High Intensity Porch and Hitch Lights	<input checked="" type="checkbox"/>	<input type="checkbox"/>	TV Antenna	<input checked="" type="checkbox"/>	<input type="checkbox"/>
4 B.A.L. Jacks w/Sand Pads	<input checked="" type="checkbox"/>	<input type="checkbox"/>	Awning	<input checked="" type="checkbox"/>	<input type="checkbox"/>
Radiused Windows w/Safety Glass	<input checked="" type="checkbox"/>	<input type="checkbox"/>	Outside Shower	<input checked="" type="checkbox"/>	<input type="checkbox"/>
			Safety Glass	<input checked="" type="checkbox"/>	<input type="checkbox"/>

All illustrations and specifications contained in this literature are based on the latest product information at time of publication. Vanguard LLC reserves the right to make changes in price, colors, materials, equipment and specifications and to discontinue models at anytime without notice or obligation and assumes no responsibility for any error in this literature.

Palomino Travel Trailers and Fifth Wheels are designed to meet the varied needs of the customer. It is the responsibility of the owner to select the proper load combination for their individual needs without exceeding the listed axle weight capacities.

Warranty

Tent Warranty- Vinyl tents manufactured by Vanguard LLC are warranted for 5 years to the original owner. Free from defect in materials and workmanship under normal use and service.

EPDM Rubber Roof....12 Years • Frame... 5 Years • Fiberglass Skin.... 2 Years • AL-KO Torsion Axle 5 Years
 • General Camper Coverage 1 Year • Structural 3 Years



VANGUARD LLC, COLON, MICHIGAN 49040, PHONE (269) 432-3271 www.palominorv.com

Dare to Compare Check List

Palomino

offers many

great features

as standard

equipment.

Make sure

you're getting

the most for

your RV

investment.

	Palomino	Competition		Palomino	Competition
Construction Features			Interior Features		
1 Year Bumper to Hitch Warranty	<input checked="" type="checkbox"/>	<input type="checkbox"/>	Gas/Electric DSI Water Heater	<input checked="" type="checkbox"/>	<input type="checkbox"/>
3 Year Structural Warranty	<input checked="" type="checkbox"/>	<input type="checkbox"/>	Hard Valances w/Lambrequins	<input checked="" type="checkbox"/>	<input type="checkbox"/>
12 Year Rubber Roof Warranty	<input checked="" type="checkbox"/>	<input type="checkbox"/>	Fabrics Blinds on all Windows	<input checked="" type="checkbox"/>	<input type="checkbox"/>
5 Year Chassis Warranty	<input checked="" type="checkbox"/>	<input type="checkbox"/>	Tile-like Linoleum	<input checked="" type="checkbox"/>	<input type="checkbox"/>
5 Year Tent Fabric Warranty	<input checked="" type="checkbox"/>	<input type="checkbox"/>	Ducted Heat	<input checked="" type="checkbox"/>	<input type="checkbox"/>
AL-KO Independent Suspension	<input checked="" type="checkbox"/>	<input type="checkbox"/>	Wall Mounted Monitor Panel	<input checked="" type="checkbox"/>	<input type="checkbox"/>
Welded Aluminum Structure	<input checked="" type="checkbox"/>	<input type="checkbox"/>	Cable TV Jack	<input checked="" type="checkbox"/>	<input type="checkbox"/>
Laminated Vacuum Bonded Sidewall	<input checked="" type="checkbox"/>	<input type="checkbox"/>	TV Shelf and Outlet in Bedroom	<input checked="" type="checkbox"/>	<input type="checkbox"/>
Venture I-Beam Frame	<input checked="" type="checkbox"/>	<input type="checkbox"/>	Gas Support Struts on Bed	<input checked="" type="checkbox"/>	<input type="checkbox"/>
14" Tires	<input checked="" type="checkbox"/>	<input type="checkbox"/>	Power Roof Vent in Bedroom	<input checked="" type="checkbox"/>	<input type="checkbox"/>
Safety Glass	<input checked="" type="checkbox"/>	<input type="checkbox"/>	Fiber Link Bathtub	<input checked="" type="checkbox"/>	<input type="checkbox"/>
Corrosion Resistant ABS Bottle Cover	<input checked="" type="checkbox"/>	<input type="checkbox"/>	Fiber Link One Piece Tub Surround	<input checked="" type="checkbox"/>	<input type="checkbox"/>
"Rain Gutter" Moldings w/Drip Spouts	<input checked="" type="checkbox"/>	<input type="checkbox"/>	Large, Double Bowl Sinks	<input checked="" type="checkbox"/>	<input type="checkbox"/>
Ducted Air Conditioning Ready	<input checked="" type="checkbox"/>	<input type="checkbox"/>	Molded Cutting Board Sink Covers	<input checked="" type="checkbox"/>	<input type="checkbox"/>
Under Floor Holding Tanks	<input checked="" type="checkbox"/>	<input type="checkbox"/>	High Rise Residential Style Faucet	<input checked="" type="checkbox"/>	<input type="checkbox"/>
26" Radius Entry Door	<input checked="" type="checkbox"/>	<input type="checkbox"/>	Standard Features		
Large Pass Thru Storage (Most Models)	<input checked="" type="checkbox"/>	<input type="checkbox"/>	Spare Tire w/Cover	<input checked="" type="checkbox"/>	<input type="checkbox"/>
High Intensity Porch and Hitch Lights	<input checked="" type="checkbox"/>	<input type="checkbox"/>	TV Antenna	<input checked="" type="checkbox"/>	<input type="checkbox"/>
4 B.A.L. Jacks w/Sand Pads	<input checked="" type="checkbox"/>	<input type="checkbox"/>	Awning	<input checked="" type="checkbox"/>	<input type="checkbox"/>
Radiused Windows w/Safety Glass	<input checked="" type="checkbox"/>	<input type="checkbox"/>	Outside Shower	<input checked="" type="checkbox"/>	<input type="checkbox"/>
			Safety Glass	<input checked="" type="checkbox"/>	<input type="checkbox"/>

All illustrations and specifications contained in this literature are based on the latest product information at time of publication. Vanguard LLC reserves the right to make changes in price, colors, materials, equipment and specifications and to discontinue models at anytime without notice or obligation and assumes no responsibility for any error in this literature.

Palomino Travel Trailers and Fifth Wheels are designed to meet the varied needs of the customer. It is the responsibility of the owner to select the proper load combination for their individual needs without exceeding the listed axle weight capacities.

Warranty

Tent Warranty- Vinyl tents manufactured by Vanguard LLC are warranted for 5 years to the original owner. Free from defect in materials and workmanship under normal use and service.

EPDM Rubber Roof....12 Years • Frame... 5 Years • Fiberglass Skin.... 2 Years • AL-KO Torsion Axle 5 Years
 • General Camper Coverage 1 Year • Structural 3 Years



VANGUARD LLC, COLON, MICHIGAN 49040, PHONE (269) 432-3271 www.palominorv.com