



CONSTRUCTION

The major considerations in building a top quality motorhome are long lasting beauty coupled with the ability to stand up to any weather conditions. The coach is an aluminium and steel framed structure with vacuum bonded gel coat fibreglass sidewalls and a domed roof finished with a seamless EPDM membrane.



Floor [Exterior to Interior]

1. One Piece Woven Poly-Propylene Underbelly
2. 3/8" Plywood
3. Tubular Steel Framing (Welded)
4. Styrofoam Filled Wall Support Plates
5. 1" Block Styrofoam Insulation
6. 1/2" Plywood
7. Carpet Underlay
8. Carpeting (Floor covering)

Sidewalls [Exterior to Interior]

1. Seamless Fibreglass Exterior
2. Luaun Structural Backer
3. Aluminium Framing (Welded)
4. Styrofoam Filled Floor and Roof Plate
5. 1" Block Styrofoam Insulation
6. 1/2" Styrofoam Thermal Break Insulation
7. Interior Decorative Luaun Wall Panels

Roof [Exterior to Interior]

1. One Piece EPDM Roofing
2. Luaun Backer
3. Aluminium Roof Truss
4. Styrofoam Filled Roof Truss Supports
5. 1 1/2" Block Styrofoam Insulation
6. Enclosed/Insulated Climate Control Ducting
7. 2" Block Styrofoam Thermal Break Insulation
8. 3/8" Plywood
9. One Piece Headliner

INTERIOR COMFORT AND EXTERIOR PROTECTION

Born of our northern heritage, Triple E's exclusive Climate Guard® system is quite simply the best interior comfort and exterior protection package available in the recreational vehicle industry today.

The Climate Guard® system has been developed with today's motorhome enthusiast in mind. It provides year round climate controlled comfort for passengers as well as built in protection for the motorhome itself, ensuring years of trouble free operation and enjoyment.

INTERIOR COMFORT

- Dometic® roof air conditioners, ducted front to rear, control the temperature throughout the coach.
- High output chassis air conditioner provides travelling comfort.
- Electronic ignition furnace designed to maintain requested interior temperatures through extreme exterior temperatures.
- High output chassis heater for quick windshield defrost.
- A rear auxiliary automotive heater - complete with electric valve - makes travel comfortable while heating the fresh water and holding tank compartments.
- Vacuum bonded, aluminium framed, insulated sidewall and roof construction provides high strength and maintained warmth throughout the coach.
- Coach windows are designed with a dual pane construction - impeding the transfer of cold to make the interior of the window warmer and less subject to condensation.
- Optional insulated vent covers provide superior insulation for the fantastic fans and roof vents.

EXTERIOR PROTECTION

- Scratch and hail resistant gel coat fibreglass sidewalls with all weather exterior finish are easy to maintain and will not rust, pit, or fade.
- A domed, seamless, insulated, one piece EPDM rubber roof promotes quick water run off and reduces the noise of outside elements.
- Urethane undercoating protects against dust and moisture and reduces stone and road noise.
- Steel enclosed, fibreglass insulated and heated fresh water and holding tanks assure extreme cold climate performance for your plumbing system. Tanks are heated from two different sources: the motorhome's ducted furnace while parked and the rear auxiliary heater when travelling.
- Winterization system complete with potable antifreeze pickup kit allows you to easily drain tanks and fill water lines with potable antifreeze.
- Steel, insulated, and sealed firewall protects the driver and passengers from the outside elements.
- Additional 1/2" thermal break insulation beyond the standard 1" Styrofoam block insulation separates the climate controlled interior from the outside elements.



Visit Triple E online at www.tripleerv.com.

TRIPLE E QUALITY



Unparalleled craftsmanship



Triple E is located in the centre of Canada – in one of the most extreme climates in North America. Customers can thus be confident that our

products have truly been put to the test when it comes to the elements.

Much of what you see in our products is built on site to our highest standards. In our plant you'll find an impressive, progressive production facility complete with welding shop, paint shop, fibreglass and mold shop, sewing department, and cabinet manufacturing department.



Structural integrity and durability are critical in every unit we produce – to the smallest of details. For example, cabinetry is constructed with screws rather than staples. It's the little things that make a big difference.



All Triple E products are built to CSA (Canadian Standards Association) or

RVIA (Recreational Vehicle Industry Association) Standards. Triple E was one of the first RV manufacturers to obtain the ISO 9002 certification – your assurance of the careful construction and high quality materials that are part and parcel of every Triple E unit.

Triple E is proud to offer a

2 YEAR LIMITED WARRANTY

on structure as well as most major components. Please see your dealer for further details.



This combination of labels assures the purchaser that the manufacturer has met or surpassed CSA-CRVA-RVIA standards covering electrical services, gas services, plumbing services, and vehicular safety.

Commander Motorhomes exceed 96 inches in width. In some states, 96 inches is the maximum width of vehicles travelling some or all state roads. It is the responsibility of the owner to be familiar with the road usage laws of the states in which you travel.

COACH NET

Triple E is a proud partner of Coach Net, an extensive support program providing complete and fully paid roadside assistance, emergency road service, and special warranty support benefits that follow you throughout Canada and the US. Service is free for the first year of ownership and available at a nominal fee for subsequent years.

Coach Net's 24-hour Customer Care includes:

- Emergency roadside assistance - including tow vehicle
- Toll free technician hotline for operation and service support
- Toll free nationwide service appointment assistance
- Free custom trip routing and colour maps
- Warranty service at over 6,800 locations throughout North America
- Benefits such as free jump starts, tire changes, fuel delivery, and lock out service

Brochure pictures may be shown with optional equipment.

Full of possibilities. Full of life. View the entire family of Triple E products at www.tripleerv.com.



P.O. Box 1230, Winkler, MB
Canada R6W 4C4
Tel: (204) 325-4361
Fax: (204) 325-5241
www.tripleerv.com

TAKE FREEDOM Further



Commander

COMMANDER 2004



TAKE FREEDOM Further

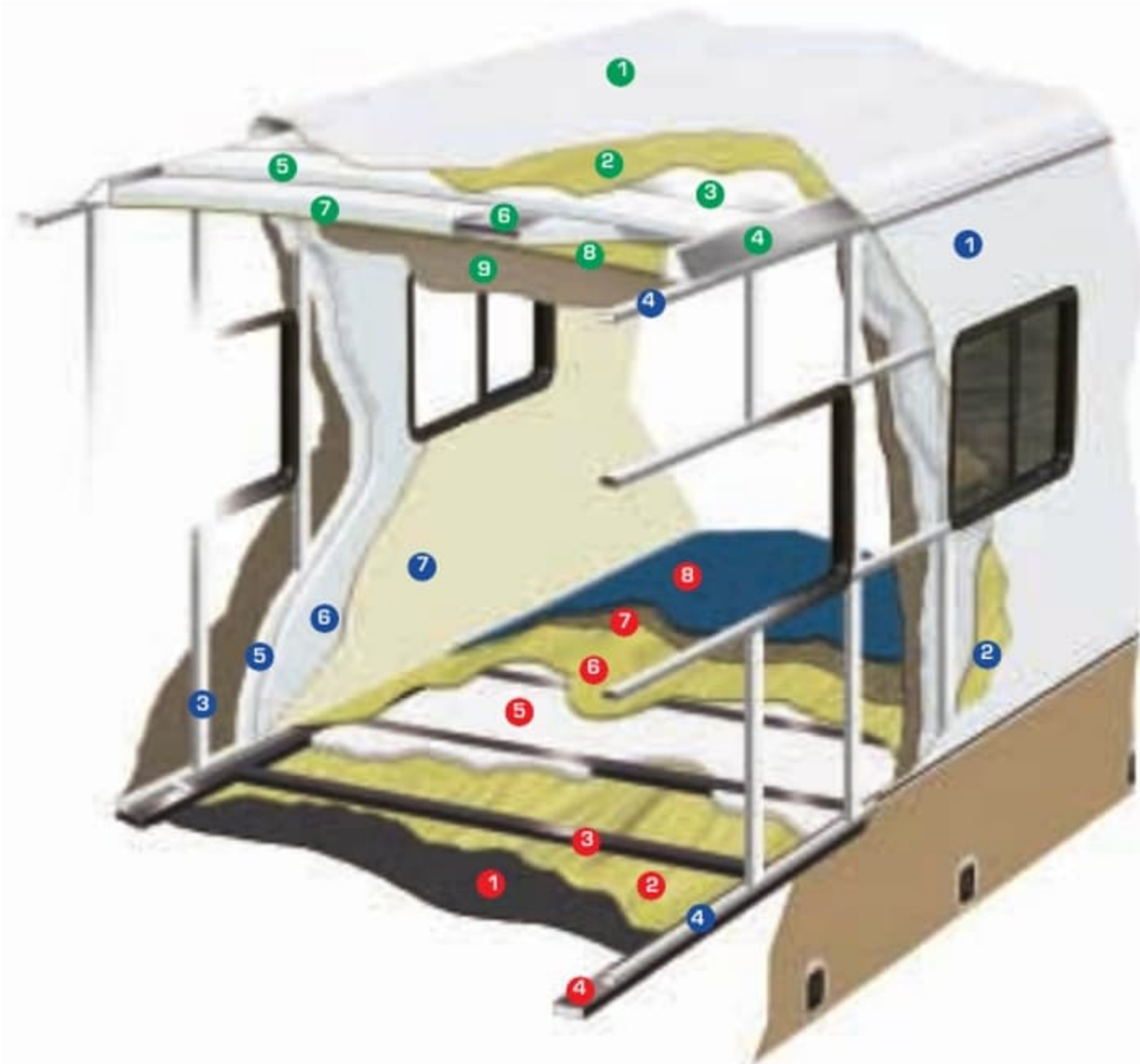


RECREATIONAL VEHICLES



CONSTRUCTION

The major considerations in building a top quality motorhome are long lasting beauty coupled with the ability to stand up to any weather conditions. The coach is an aluminium and steel framed structure with vacuum bonded gel coat fibreglass sidewalls and a domed roof finished with a seamless EPDM membrane.



Floor [Exterior to Interior]

1. One Piece Woven Poly-Propylene Underbelly
2. 3/8" Plywood
3. Tubular Steel Framing (Welded)
4. Styrofoam Filled Wall Support Plates
5. 1" Block Styrofoam Insulation
6. 1/2" Plywood
7. Carpet Underlay
8. Carpeting (Floor covering)

Sidewalls [Exterior to Interior]

1. Seamless Fibreglass Exterior
2. Luau Structural Backer
3. Aluminium Framing (Welded)
4. Styrofoam Filled Floor and Roof Plate
5. 1" Block Styrofoam Insulation
6. 1/2" Styrofoam Thermal Break Insulation
7. Interior Decorative Luau Wall Panels

Roof [Exterior to Interior]

1. One Piece EPDM Roofing
2. Luau Backer
3. Aluminium Roof Truss
4. Styrofoam Filled Roof Truss Supports
5. 1 1/2" Block Styrofoam Insulation
6. Enclosed/Insulated Climate Control Ducting
7. 2" Block Styrofoam Thermal Break Insulation
8. 3/8" Plywood
9. One Piece Headliner

INTERIOR COMFORT AND EXTERIOR PROTECTION

Born of our northern heritage, Triple E's exclusive Climate Guard® system is quite simply the best interior comfort and exterior protection package available in the recreational vehicle industry today.

The Climate Guard® system has been developed with today's motorhome enthusiast in mind. It provides year round climate controlled comfort for passengers as well as built in protection for the motorhome itself, ensuring years of trouble free operation and enjoyment.

INTERIOR COMFORT

- Dometic® roof air conditioners, ducted front to rear, control the temperature throughout the coach.
- High output chassis air conditioner provides travelling comfort.
- Electronic ignition furnace designed to maintain requested interior temperatures through extreme exterior temperatures.
- High output chassis heater for quick windshield defrost.
- A rear auxiliary automotive heater - complete with electric valve - makes travel comfortable while heating the fresh water and holding tank compartments.
- Vacuum bonded, aluminium framed, insulated sidewall and roof construction provides high strength and maintained warmth throughout the coach.
- Coach windows are designed with a dual pane construction - impeding the transfer of cold to make the interior of the window warmer and less subject to condensation.
- Optional insulated vent covers provide superior insulation for the fantastic fans and roof vents.

EXTERIOR PROTECTION

- Scratch and hail resistant gel coat fibreglass sidewalls with all weather exterior finish are easy to maintain and will not rust, pit, or fade.
- A domed, seamless, insulated, one piece EPDM rubber roof promotes quick water run off and reduces the noise of outside elements.
- Urethane undercoating protects against dust and moisture and reduces stone and road noise.
- Steel enclosed, fibreglass insulated and heated fresh water and holding tanks assure extreme cold climate performance for your plumbing system. Tanks are heated from two different sources: the motorhome's ducted furnace while parked and the rear auxiliary heater when travelling.
- Winterization system complete with potable antifreeze pickup kit allows you to easily drain tanks and fill water lines with potable antifreeze.
- Steel, insulated, and sealed firewall protects the driver and passengers from the outside elements.
- Additional 1/2" thermal break insulation beyond the standard 1" Styrofoam block insulation separates the climate controlled interior from the outside elements.



Visit Triple E online at www.tripleerv.com.

TRIPLE E QUALITY



Unparalleled craftsmanship



Triple E is located in the centre of Canada – in one of the most extreme climates in North America. Customers can thus be confident that our

products have truly been put to the test when it comes to the elements.

Much of what you see in our products is built on site to our highest standards. In our plant you'll find an impressive, progressive production facility complete with welding shop, paint shop, fibreglass and mold shop, sewing department, and cabinet manufacturing department.



P.O. Box 1230, Winkler, MB
Canada R6W 4C4
Tel: (204) 325-4361
Fax: (204) 325-5241
www.tripleerv.com

TAKE FREEDOM Further

Structural integrity and durability are critical in every unit we produce – to the smallest of details. For example, cabinetry is constructed with screws rather than staples. It's the little things that make a big difference.



All Triple E products are built to CSA (Canadian Standards Association) or RVIA (Recreational Vehicle Industry Association) Standards. Triple E was one of the first RV manufacturers to obtain the ISO 9002 certification – your assurance of the careful construction and high quality materials that are part and parcel of every Triple E unit.

Triple E is proud to offer a

2 YEAR LIMITED WARRANTY

on structure as well as most major components. Please see your dealer for further details.



This combination of labels assures the purchaser that the manufacturer has met or surpassed CSA-CRVA-RVIA standards covering electrical services, gas services, plumbing services, and vehicular safety.

Commander Motorhomes exceed 96 inches in width. In some states, 96 inches is the maximum width of vehicles travelling some or all state roads. It is the responsibility of the owner to be familiar with the road usage laws of the states in which you travel.

COACH NET

Triple E is a proud partner of Coach Net, an extensive support program providing complete and fully paid roadside assistance, emergency road service, and special warranty support benefits that follow you throughout Canada and the US. Service is free for the first year of ownership and available at a nominal fee for subsequent years.

Coach Net's 24-hour Customer Care includes:

- Emergency roadside assistance - including tow vehicle
- Toll free technician hotline for operation and service support
- Toll free nationwide service appointment assistance
- Free custom trip routing and colour maps
- Warranty service at over 6,800 locations throughout North America
- Benefits such as free jump starts, tire changes, fuel delivery, and lock out service

Brochure pictures may be shown with optional equipment.

Full of possibilities. Full of life. View the entire family of Triple E products at www.tripleerv.com.



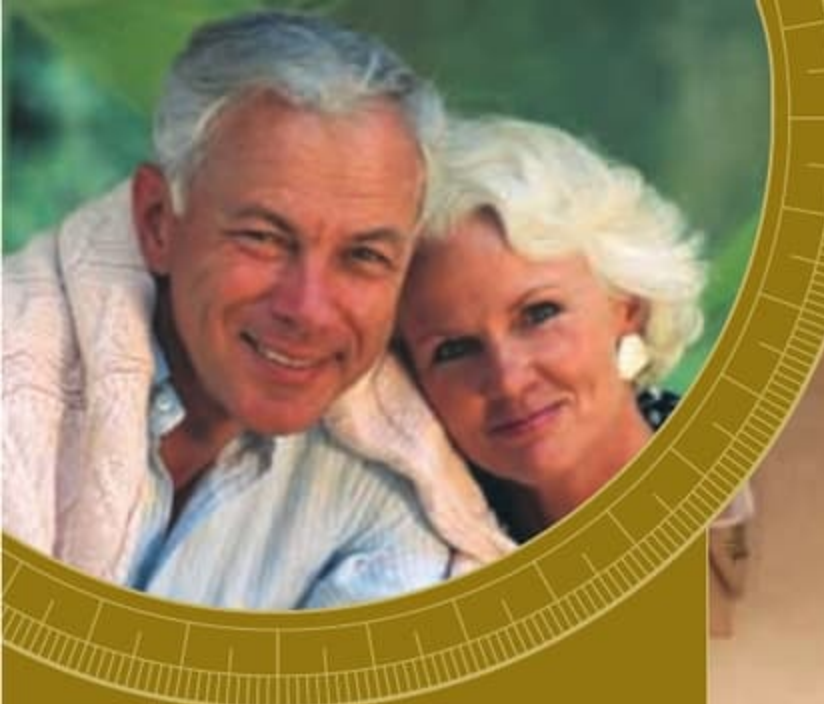
Commander

COMMANDER 2004



TAKE FREEDOM Further





COME HOME TO FREEDOM

Travel south for the winter. Nestle into a botanical park so spring can awaken your senses. Cruise the summertime coastline. Experience autumn's patchwork palette. Then do it all over again.

A3511GB shown with Shimmering Pearl Décor >>



S = Standard O = Option **New** = New for 2004

GALLEY

Bi-fold Range Cover - Recessed	S	S	S	S	S	S	S	S	S
Coffee Maker	O	O	O	O	O	O	O	O	O
Cooktop - Recessed Cooktop with High Output Burner	S	S	S	S	S	S	S	S	S
Countertop - Laminate with Solid Surface Edging, Stainless Steel Sink with Flush Sink Covers	S	S	S	S	S	S	S	S	S
Countertop - Solid Surface Counter in Galley	-	O	O	O	O	O	O	O	O
Flooring - Hardwood in Galley	S	S	S	S	S	S	S	S	S
Micro/Convection Oven - (OTR) with 110 V Range Hood & Light	S	S	S	S	S	S	S	S	S
Oven - LP Gas	O	O	O	O	O	O	O	O	O
Pantry - Half Height Pantry above Washer & Dryer Cabinet	-	-	-	-	-	-	-	O	-
Refrigerator - Dometic LP/Electric 8 cu ft with Temp Control & Raised Sculptured Inset	S	S	S	S	S	S	S	S	S
Refrigerator - Dometic Two Door, Gas/Electric with Ice Maker & Black Stainless Doors (10 cu ft)	O	O	O	O	O	O	O	O	O

LAVATORY

Fan - Thermostatically Controlled (non Reversible) in Lavatory or Toilet Room	S	S	S	S	S	S	S	S	S
Flooring - Linoleum Flooring in Bathroom	S	S	S	S	S	S	S	S	S
Skylight - in Shower	S	S	S	S	S	S	S	S	S
Toilet - Bravura Single Pedal Deep Bowl	S	S	S	S	S	S	S	S	S

ENTERTAINMENT

CB Antenna - Includes Coax Lead under Dash	O	O	O	O	O	O	O	O	O
DVD Player with Upgrade to Premium Switch Box	O	O	O	O	O	O	O	O	O
Master Control - Audio/Video Master Control Switch Box	S	S	S	S	S	S	S	S	S
Pre-wire - for AC or DC Bedroom TV	S	-	-	-	-	-	-	-	-
Pre-wire - Satellite Dish (with 12 V Power, 110 V & KVH Cable)	S	S	S	S	S	S	S	S	S
Radio Monoplex System	S	S	S	S	S	S	S	S	S
Satellite Dish - KVH LF In Motion - without Receiver	O	O	O	O	O	O	O	O	O
Satellite Dish - KVH SF Automatic - without Receiver	O	O	O	O	O	O	O	O	O
Satellite Dish - Wineguard with Electronic Elevation Sensor	O	O	O	O	O	O	O	O	O
Stereo - AM/FM Cassette/CD - 80 W	O	O	O	O	O	O	O	O	O
Stereo - Big Button AM/FM CD in Dash Stereo - 80 W	S	S	S	S	S	S	S	S	S
Stereo - Big Button AM/FM Stereo with 6-Stack in Dash CD Changer - 80 W	O	O	O	O	O	O	O	O	O
Stereo - Exterior AM/FM CD Stereo with Shielded Speakers	O	O	O	O	O	O	O	O	O
Telephone & Cable TV Hook-up - Exterior	S	S	S	S	S	S	S	S	S
TV - AC 20" Flat Screen Colour Stereo with Remote in Bedroom	-	S	S	S	S	S	S	S	S
TV - AC 20" Flat Screen Colour Stereo with Remote in Front Overhead Cabinet	S	S	S	S	S	S	S	S	S
TV - DC 13" Color with Remote in Oak Cabinet in Bedroom	O	-	-	-	-	-	-	-	-
TV Antenna - Roof Top Retractable Antenna with Booster	S	S	S	S	S	S	S	S	S
VCR - AC Video Cassette Recorder	S	S	S	S	S	S	S	S	S

HEATING, VENTILATING AND AIR CONDITIONING

Air Conditioner - Dual Ducted (2) 13,500 BTU with Heat Strip and EMS	-	O	O	O	O	O	O	O	O
Air Conditioner - Ducted Roof 13,500 BTU with Heat Strip	S	S	S	S	S	S	S	S	S
Air Conditioner - Ducted Roof 15,000 BTU with Heat Strip	-	O	O	O	O	O	O	O	O
Fan - Thermostatically Controlled Fan in Living Area	O	O	O	O	O	O	O	O	O
Furnace - 2 x 25,000 BTU Furnace with Electronic Ignition	-	S	S	S	S	S	S	S	S
Furnace - 35,000 BTU Furnace with Electronic Ignition	S	-	-	-	-	-	-	-	-
Heater - Rear Auxiliary Automotive with Electric Water Valve	S	S	S	S	S	S	S	S	S

ELECTRICAL

Batteries - Dual RV 27 Deep Cycle Auxiliary (12 V)	S	S	S	S	S	S	S	S	S
Batteries - Upgrade to 2 x 6 Volt Coach Batteries	O	O	O	O	O	O	O	O	O
Bi-Directional Isolator Relay Delay (BIRD) Battery Charging	S	S	S	S	S	S	S	S	S
Converter - 120/12 V with Charger & Changeover Relay	S	S	S	S	S	S	S	S	S
Energy Management System (EMS)	-	O	O	O	O	O	O	O	O
Generator - 5.5 KW Onan Marquis Gold with Dash-Mounted Hour Meter	S	S	S	S	S	S	S	S	S
Panel - 30 Amp Electrical Service	S	S	S	S	S	S	S	S	S
Panel - 50 Amp Electrical Service with EMS	-	-	O	O	O	O	O	O	O
Pre-wire - Solar Panel	S	S	S	S	S	S	S	S	S
Switch - Electronic Battery Disconnect (Coach Batteries)	S	S	S	S	S	S	S	S	S

PLUMBING AND LP SYSTEMS

Black Tank Flush System	S	S	S	S	S	S	S	S	S
Holding Tanks - Enclosed, Insulated, Dual Heated Waste Tanks	S	S	S	S	S	S	S	S	S
LP Tank - Easy Access Propane Tank	S	S	S	S	S	S	S	S	S
Panel - Systems Monitor	S	S	S	S	S	S	S	S	S
Roughed in Plumbing for Washer Dryer	-	-	-	-	-	-	-	-	-
Switch - 3-Way Water Pump Switch	S	S	S	S	S	S	S	S	S
Valve - Water Heater By-Pass	S	S	S	S	S	S	S	S	S
Water Heater - Electronic Ignition LP Gas/Electric/Motoraid (Capacity in US Gallons)	6	6	10	10	10	6	10	10	10
Water Purifier - Faucet in Galley	S	S	S	S	S	S	S	S	S
Water Tank - Enclosed, Insulated & Dual Heated	S	S	S	S	S	S	S	S	S
Water Tank Fill & Bleach Port	S	S	S	S	S	S	S	S	S
Winterization System with Antifreeze Pickup	S	S	S	S	S	S	S	S	S

SYSTEMS

Central Vacuum with Outlet in Baggage Compartment	S	S	S	S	S	S	S	S	S
Rear-view Camera/Monitor - Color LCD Display Mounted in Dash	S	S	S	S	S	S	S	S	S
Washer/Dryer (vented)	-	-	O	-	O	-	O	-	O

OPTIONAL AWNING PACKAGES

Awning - Weathershield Equipped A&E Elite 9000 Patio-Acrylic (length shown)	16	14	15	15	18	14	15	15	18
Awning - Weathershield Equipped A&E Elite Slide Topper (number shown)	-	2	2	2	2	2	2	2	2
Awning - Weathershield Equipped A&E Elite Window Awnings (number shown)	3	3	3	3	2	3	3	3	2

Factory P.D.I.	O	O	O	O	O	O	O	O	O
----------------	---	---	---	---	---	---	---	---	---

Product improvement is a continuing process at Triple E Recreational Vehicles. Thus, we reserve the right to change specifications on any or all products without prior notice, errors and omissions excepted. Triple E Recreational Vehicles is under no obligation to undertake modification to units manufactured prior to changes on specifications.

SPECIFICATIONS

COMMANDER 2004	A2901	A3202FB	A3509FB	A3510FB	A3601FB	A3212FB	A3519FB	A3511GB	A3611FB
	FORD CHASSIS			WORKHORSE CUSTOM CHASSIS					
GVWR - lbs (kg)	18,000 (8,160)	22,000 (10,000)	22,000 (10,000)	22,000 (10,000)	22,000 (10,000)	22,000 (10,000)	22,000 (10,000)	22,000 (10,000)	22,000 (10,000)
UVW - lbs (kg)	15,012 (6,809)	18,195 (8,251)	18,686 (8,476)	18,413 (8,352)	18,929 (8,586)	18,735 (8,498)	19,228 (8,740)	18,995 (8,634)	19,471 (8,850)
NCC - lbs (kg)	2,988 (1,355)	3,805 (1,726)	3,314 (1,503)	3,547 (1,609)	3,071 (1,393)	3,265 (1,481)	2,772 (1,260)	3,005 (1,366)	2,529 (1,150)
Wheelbase - inches (mm)	190 (4,826)	208 (5,283)	228 (5,791)	228 (5,791)	228 (5,791)	208 (5,283)	228 (5,791)	228 (5,791)	228 (5,791)
Length - feet (mm)	29'10" (9,098)	32'7" (9,932)	34'3" (10,439)	34'3" (10,439)	35'9" (10,896)	32'7" (9,932)	34'3" (10,439)	34'3" (10,439)	35'9" (10,896)
Width - feet (mm)	8'4" (2,534)	8'4" (2,534)	8'4" (2,534)	8'4" (2,534)	8'4" (2,534)	8'4" (2,534)	8'4" (2,534)	8'4" (2,534)	8'4" (2,534)
Height (incl. A/C) - feet (mm)	11'10" (3,607)	11'11" (3,632)	11'11" (3,632)	11'11" (3,632)	11'11" (3,632)	11'11" (3,632)	12' (3,658)	12' (3,658)	12' (3,658)
* Water Tank Cap. - gal (l)	84 (319)	84 (319)	88 (333)	88 (333)	88 (333)	84 (319)	88 (333)	88 (333)	88 (333)
Water heater	6 (22.7)	6 (22.7)	10 (37.8)	10 (37.8)	10 (37.8)	6 (22.7)	10 (37.8)	10 (37.8)	10 (37.8)
Black Holding Tank Cap. - gal (l)	39 (147.4)	39 (147.4)	39 (147.4)	39 (147.4)	42 (158.8)	39 (147.4)	39 (147.4)	39 (147.4)	42 (158.8)
Grey Holding Tank Cap. - gal (l)	39 (147.4)	42 (158.8)	42 (158.8)	42 (158.8)	39 (147.4)	42 (158.8)	42 (158.8)	42 (158.8)	39 (147.4)
Fuel Cap. - gal (l)	75 (284)	75 (284)	75 (284)	75 (284)	75 (284)	75 (284)	75 (284)	75 (284)	75 (284)
Propane Cap. - gal (l)	25.3 (95.8)	24.2 (91.5)	29.2 (110.4)	29.2 (110.4)	29.2 (110.4)	24.2 (91.5)	29.2 (110.4)	29.2 (110.4)	29.2 (110.4)

* Includes water heater

NOTE: All capacities in US gallons

GVWR

GROSS VEHICLE WEIGHT RATING means the maximum permissible weight of this motorhome. The GVWR is equal to or greater than the sum of the unloaded vehicle weight (UVW) plus the net carrying capacity (NCC).

UVW

UNLOADED VEHICLE WEIGHT means the weight of the motorhome as built at the factory with full fuel, engine oil, and coolants. The UVW does not include cargo, fresh water, LP gas, occupants, factory or dealer installed accessories.

NCC

NET CARRYING CAPACITY means the maximum weight of all occupants, including the driver, personal belongings, food, fresh water, LP gas, tools, tongue weight of towed vehicle, factory and dealer installed accessories, etc., that can be carried by this motorhome. (NCC is equal to or less than GVWR minus UVW.)

NOTE: Please see your dealer for weights of factory installed options.



- The luxurious cockpit allows for spectacular views on the road and a deluxe seating area when stopped.
- A convenient hamper allows you to stow away your laundry. (Select models only)
- New for 2004 - an optional DVD player with upgrade to a premium switch box.
- Sturdy aluminium exterior baggage doors are accessible with gas-powered struts.
- Optional electric visors keep the sun out of your eyes.
- The colour LCD rearview camera/monitor will assist you when backing up, while the big button radio makes it easy to switch stations while on the move.
- The full-featured lavatory includes a solid oak vanity and skylight in the shower.





COME HOME TO FREEDOM

Travel south for the winter. Nestle into a botanical park so spring can awaken your senses. Cruise the summertime coastline. Experience autumn's patchwork palette. Then do it all over again.

A3511GB shown with Shimmering Pearl Décor >>



S = Standard O = Option **New** = New for 2004

GALLEY

Bi-fold Range Cover - Recessed	S	S	S	S	S	S	S	S	S
Coffee Maker	O	O	O	O	O	O	O	O	O
Cooktop - Recessed Cooktop with High Output Burner	S	S	S	S	S	S	S	S	S
New Countertop - Laminate with Solid Surface Edging, Stainless Steel Sink with Flush Sink Covers	S	S	S	S	S	S	S	S	S
Countertop - Solid Surface Counter in Galley	-	O	O	O	O	O	O	O	O
Flooring - Hardwood in Galley	S	S	S	S	S	S	S	S	S
Micro/Convection Oven - (OTR) with 110 V Range Hood & Light	S	S	S	S	S	S	S	S	S
Oven - LP Gas	O	O	O	O	O	O	O	O	O
Pantry - Half Height Pantry above Washer & Dryer Cabinet	-	-	-	-	-	-	-	-	O
New Refrigerator - Dometic LP/Electric 8 cu ft with Temp Control & Raised Sculptured Inset	S	S	S	S	S	S	S	S	S
New Refrigerator - Dometic Two Door, Gas/Electric with Ice Maker & Black Stainless Doors (10 cu ft)	O	O	O	O	O	O	O	O	O

LAVATORY

New Fan - Thermostatically Controlled (non Reversible) in Lavatory or Toilet Room	S	S	S	S	S	S	S	S	S
Flooring - Linoleum Flooring in Bathroom	S	S	S	S	S	S	S	S	S
Skylight - in Shower	S	S	S	S	S	S	S	S	S
New Toilet - Bravura Single Pedal Deep Bowl	S	S	S	S	S	S	S	S	S

ENTERTAINMENT

CB Antenna - Includes Coax Lead under Dash	O	O	O	O	O	O	O	O	O
New DVD Player with Upgrade to Premium Switch Box	O	O	O	O	O	O	O	O	O
Master Control - Audio/Video Master Control Switch Box	S	S	S	S	S	S	S	S	S
Pre-wire - for AC or DC Bedroom TV	S	-	-	-	-	-	-	-	-
New Pre-wire - Satellite Dish (with 12 V Power, 110 V & KVH Cable)	S	S	S	S	S	S	S	S	S
Radio Monoplex System	S	S	S	S	S	S	S	S	S
New Satellite Dish - KVH LF In Motion - without Receiver	O	O	O	O	O	O	O	O	O
New Satellite Dish - KVH SF Automatic - without Receiver	O	O	O	O	O	O	O	O	O
New Satellite Dish - Wineguard with Electronic Elevation Sensor	O	O	O	O	O	O	O	O	O
New Stereo - AM/FM Cassette/CD - 80 W	O	O	O	O	O	O	O	O	O
Stereo - Big Button AM/FM CD in Dash Stereo - 80 W	S	S	S	S	S	S	S	S	S
Stereo - Big Button AM/FM Stereo with 6-Stack in Dash CD Changer - 80 W	O	O	O	O	O	O	O	O	O
Stereo - Exterior AM/FM CD Stereo with Shielded Speakers	O	O	O	O	O	O	O	O	O
Telephone & Cable TV Hook-up - Exterior	S	S	S	S	S	S	S	S	S
New TV - AC 20" Flat Screen Colour Stereo with Remote in Bedroom	O	-	-	-	-	-	-	-	-
New TV - AC 20" Flat Screen Colour Stereo with Remote in Front Overhead Cabinet	S	S	S	S	S	S	S	S	S
TV - DC 13" Color with Remote in Oak Cabinet in Bedroom	O	-	-	-	-	-	-	-	-
TV Antenna - Roof Top Retractable Antenna with Booster	S	S	S	S	S	S	S	S	S
New VCR - AC Video Cassette Recorder	S	S	S	S	S	S	S	S	S

HEATING, VENTILATING AND AIR CONDITIONING

New Air Conditioner - Dual Ducted (2) 13,500 BTU with Heat Strip and EMS	-	O	O	O	O	O	O	O	O
Air Conditioner - Ducted Roof 13,500 BTU with Heat Strip	S	S	S	S	S	S	S	S	S
Air Conditioner - Ducted Roof 15,000 BTU with Heat Strip	-	O	O	O	O	O	O	O	O
Fan - Thermostatically Controlled Fan in Living Area	O	O	O	O	O	O	O	O	O
Furnace - 2 x 25,000 BTU Furnace with Electronic Ignition	-	S	S	S	S	S	S	S	S
Furnace - 35,000 BTU Furnace with Electronic Ignition	S	-	-	-	-	-	-	-	-
Heater - Rear Auxiliary Automotive with Electric Water Valve	S	S	S	S	S	S	S	S	S

ELECTRICAL

Batteries - Dual RV 27 Deep Cycle Auxiliary (12 V)	S	S	S	S	S	S	S	S	S
New Batteries - Upgrade to 2 x 6 Volt Coach Batteries	O	O	O	O	O	O	O	O	O
Bi-Directional Isolator Relay Delay (BIRD) Battery Charging	S	S	S	S	S	S	S	S	S
Converter - 120/12 V with Charger & Changeover Relay	S	S	S	S	S	S	S	S	S
Energy Management System (EMS)	-	O	O	O	O	O	O	O	O
New Generator - 5.5 KW Onan Marquis Gold with Dash-Mounted Hour Meter	S	S	S	S	S	S	S	S	S
Panel - 30 Amp Electrical Service	S	S	S	S	S	S	S	S	S
Panel - 50 Amp Electrical Service with EMS	-	-	O	O	O	O	O	O	O
New Pre-wire - Solar Panel	S	S	S	S	S	S	S	S	S
Switch - Electronic Battery Disconnect (Coach Batteries)	S	S	S	S	S	S	S	S	S

PLUMBING AND LP SYSTEMS

Black Tank Flush System	S	S	S	S	S	S	S	S	S
Holding Tanks - Enclosed, Insulated, Dual Heated Waste Tanks	S	S	S	S	S	S	S	S	S
LP Tank - Easy Access Propane Tank	S	S	S	S	S	S	S	S	S
Panel - Systems Monitor	S	S	S	S	S	S	S	S	S
Roughed in Plumbing for Washer Dryer	-	-	-	-	-	-	-	-	-
Switch - 3-Way Water Pump Switch	S	S	S	S	S	S	S	S	S
Valve - Water Heater By-Pass	S	S	S	S	S	S	S	S	S
Water Heater - Electronic Ignition LP Gas/Electric/Motoraid (Capacity in US Gallons)	6	6	10	10	6	10	10	10	6
New Water Purifier - Faucet in Galley	S	S	S	S	S	S	S	S	S
Water Tank - Enclosed, Insulated & Dual Heated	S	S	S	S	S	S	S	S	S
Water Tank Fill & Bleach Port	S	S	S	S	S	S	S	S	S
Winterization System with Antifreeze Pickup	S	S	S	S	S	S	S	S	S

SYSTEMS

New Central Vacuum with Outlet in Baggage Compartment	S	S	S	S	S	S	S	S	S
New Rear-view Camera/Monitor - Color LCD Display Mounted in Dash	S	S	O	-	-	-	-	-	O
Washer/Dryer (vented)	-	-	O	-	O	-	-	-	O

OPTIONAL AWNING PACKAGES

Awning - Weathershield Equipped A&E Elite 9000 Patio-Acrylic (length shown)	16	14	15	15	18	14	15	15	18
Awning - Weathershield Equipped A&E Elite Slide Topper (number shown)	-	2	2	2	2	2	2	2	2
New Awning - Weathershield Equipped A&E Elite Window Awnings (number shown)	3	3	3	3	2	3	3	3	2

Factory P.D.I.

Factory P.D.I.	O	O	O	O	O	O	O	O	O
----------------	---	---	---	---	---	---	---	---	---

Product improvement is a continuing process at Triple E Recreational Vehicles. Thus, we reserve the right to change specifications on any or all products without prior notice, errors and omissions excepted. Triple E Recreational Vehicles is under no obligation to undertake modification to units manufactured prior to changes on specifications.

SPECIFICATIONS

COMMANDER 2004	A2901	A3202FB	A3509FB	A3510FB	A3601FB	A3212FB	A3519FB	A3511GB	A3611FB
	FORD CHASSIS			WORKHORSE CUSTOM CHASSIS					
GVWR - lbs (kg)	18,000 (8,160)	22,000 (10,000)	22,000 (10,000)	22,000 (10,000)	22,000 (10,000)	22,000 (10,000)	22,000 (10,000)	22,000 (10,000)	22,000 (10,000)
UVW - lbs (kg)	15,012 (6,809)	18,195 (8,251)	18,686 (8,476)	18,413 (8,352)	18,929 (8,586)	18,735 (8,498)	19,228 (8,740)	18,995 (8,634)	19,471 (8,850)
NCC - lbs (kg)	2,988 (1,355)	3,805 (1,726)	3,314 (1,503)	3,547 (1,609)	3,071 (1,393)	3,265 (1,481)	2,772 (1,260)	3,005 (1,366)	2,529 (1,150)
Wheelbase - inches (mm)	190 (4,826)	208 (5,283)	228 (5,791)	228 (5,791)	228 (5,791)	208 (5,283)	228 (5,791)	228 (5,791)	228 (5,791)
Length - feet (mm)	29'10" (9,098)	32'7" (9,932)	34'3" (10,439)	34'3" (10,439)	35'9" (10,896)	32'7" (9,932)	34'3" (10,439)	34'3" (10,439)	35'9" (10,896)
Width - feet (mm)	8'4" (2,534)	8'4" (2,534)	8'4" (2,534)	8'4" (2,534)	8'4" (2,534)	8'4" (2,534)	8'4" (2,534)	8'4" (2,534)	8'4" (2,534)
Height (incl. A/C) - feet (mm)	11'10" (3,607)	11'11" (3,632)	11'11" (3,632)	11'11" (3,632)	11'11" (3,632)	11'11" (3,632)	12' (3,658)	12' (3,658)	12' (3,658)
* Water Tank Cap. - gal (l)	84 (319)	84 (319)	88 (333)	88 (333)	88 (333)	84 (319)	88 (333)	88 (333)	88 (333)
Water heater	6 (22.7)	6 (22.7)	10 (37.8)	10 (37.8)	10 (37.8)	6 (22.7)	10 (37.8)	10 (37.8)	10 (37.8)
Black Holding Tank Cap. - gal (l)	39 (147.4)	39 (147.4)	39 (147.4)	39 (147.4)	42 (158.8)	39 (147.4)	39 (147.4)	39 (147.4)	42 (158.8)
Grey Holding Tank Cap. - gal (l)	39 (147.4)	42 (158.8)	42 (158.8)	42 (158.8)	39 (147.4)	42 (158.8)	42 (158.8)	42 (158.8)	39 (147.4)
Fuel Cap. - gal (l)	75 (284)	75 (284)	75 (284)	75 (284)	75 (284)	75 (284)	75 (284)	75 (284)	75 (284)
Propane Cap. - gal (l)	25.3 (95.8)	24.2 (91.5)	29.2 (110.4)	29.2 (110.4)	29.2 (110.4)	24.2 (91.5)	29.2 (110.4)	29.2 (110.4)	29.2 (110.4)

* Includes water heater

NOTE: All capacities in US gallons

GVWR

GROSS VEHICLE WEIGHT RATING means the maximum permissible weight of this motorhome. The GVWR is equal to or greater than the sum of the unloaded vehicle weight (UVW) plus the net carrying capacity (NCC).

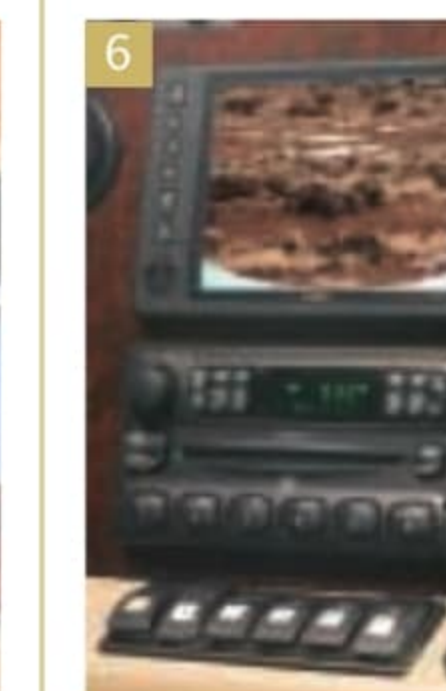
UVW

UNLOADED VEHICLE WEIGHT means the weight of the motorhome as built at the factory with full fuel, engine oil, and coolants. The UVW does not include cargo, fresh water, LP gas, occupants, factory or dealer installed accessories.

NCC

NET CARRYING CAPACITY means the maximum weight of all occupants, including the driver, personal belongings, food, fresh water, LP gas, tools, tongue weight of towed vehicle, factory and dealer installed accessories, etc., that can be carried by this motorhome. (NCC is equal to or less than GVWR minus UVW.)

NOTE: Please see your dealer for weights of factory installed options.



- The luxurious cockpit allows for spectacular views on the road and a deluxe seating area when stopped.
- A convenient hamper allows you to stow away your laundry. (Select models only)
- New for 2004 - an optional DVD player with upgrade to a premium switch box.
- Sturdy aluminium exterior baggage doors are accessible with gas-powered struts.
- Optional electric visors keep the sun out of your eyes.
- The colour LCD rearview camera/monitor will assist you when backing up, while the big button radio makes it easy to switch stations while on the move.
- The full-featured lavatory includes a solid oak vanity and skylight in the shower.

No Shortcuts

The 2004 Commander truly has everything you need to take life on the road. Combining splendid style, flexible design, and the very best appliances and amenities, you'll be amazed at how well the coach suits you!

Beautifully and thoughtfully appointed with features you wouldn't expect in a motorhome, inside you'll find:

- Easy maintenance hardwood flooring
- 20-inch colour remote TV
- Thermostatically controlled fan in bedroom
- Shower skylight

With abundant luxurious living space and more standard features than ever before, there's no better time to come home to the Commander.

Visit www.tripleerv.com for details on available options.



1 The elegant dinette area is spacious and very comfortable. Built to withstand heavy use, both structurally and aesthetically, the booth dinette or free standing table and chairs will retain their good looks for the life of your motorhome.

2 The space saving pantry displays and stores dry goods for quick access. (Select models only)

3 With plush wall to wall carpeting, rich bedding, and a tranquil décor, your bedroom area truly is a cozy haven.

4 Not only is the solid oak cabinetry warm and luxurious, it fronts extensive storage areas. Storage compartments are designed in a variety of sizes to make it easier to organize your possessions.

5 A roomy cockpit and familiar automotive-style dash make driving enjoyable.



No Shortcuts

The 2004 Commander truly has everything you need to take life on the road. Combining splendid style, flexible design, and the very best appliances and amenities, you'll be amazed at how well the coach suits you!

Beautifully and thoughtfully appointed with features you wouldn't expect in a motorhome, inside you'll find:

- Easy maintenance hardwood flooring
- 20-inch colour remote TV
- Thermostatically controlled fan in bedroom
- Shower skylight

With abundant luxurious living space and more standard features than ever before, there's no better time to come home to the Commander.



Visit www.tripleerv.com for details on available options.



1 The elegant dinette area is spacious and very comfortable. Built to withstand heavy use, both structurally and aesthetically, the booth dinette or free standing table and chairs will retain their good looks for the life of your motorhome.

2 The space saving pantry displays and stores dry goods for quick access. (Select models only)

3 With plush wall to wall carpeting, rich bedding, and a tranquil décor, your bedroom area truly is a cozy haven.

4 Not only is the solid oak cabinetry warm and luxurious, it fronts extensive storage areas. Storage compartments are designed in a variety of sizes to make it easier to organize your possessions.

5 A roomy cockpit and familiar automotive-style dash make driving enjoyable.



700
600
500
400
300
200

GOOD LOOKS

You are able to customize your motorhome with one of four distinct interior design schemes. Developed by a group of professionals, our combinations skillfully coordinate upholstery, carpeting, and window treatments in a manner that is both especially pleasing to the eye and of uncompromising quality.



Visit www.tripleerv.com for additional details on available options.



AUTUMN OAK



GOLDEN MAPLE



DESERT PLUM



CHARCOAL MIST



Shimmering Pearl



Violet Frost



Whispering Willow




Aqua Mist

Colours may not be exactly as shown due to the printing process. Please see your dealer for specific colours.

GOOD LOOKS

You are able to customize your motorhome with one of four distinct interior design schemes. Developed by a group of professionals, our combinations skillfully coordinate upholstery, carpeting, and window treatments in a manner that is both especially pleasing to the eye and of uncompromising quality.



 Visit www.tripleerv.com for additional details on available options.



AUTUMN OAK



GOLDEN MAPLE



DESERT PLUM



CHARCOAL MIST



Shimmering Pearl



Violet Frost



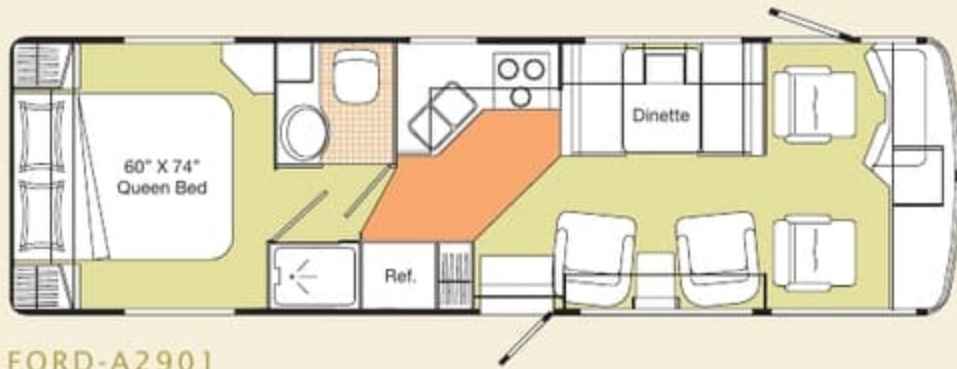
Whispering Willow



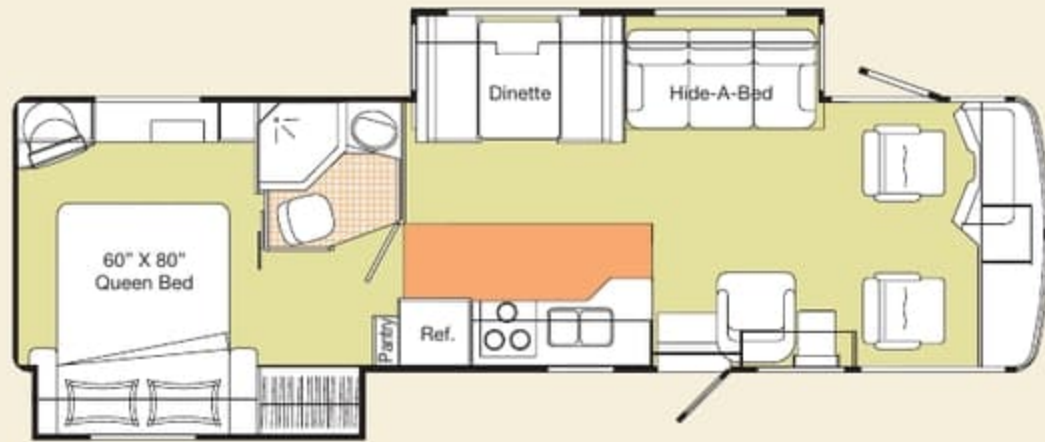
Aqua Mist

Colours may not be exactly as shown due to the printing process. Please see your dealer for specific colours.

FLOOR PLANS



FORD-A2901



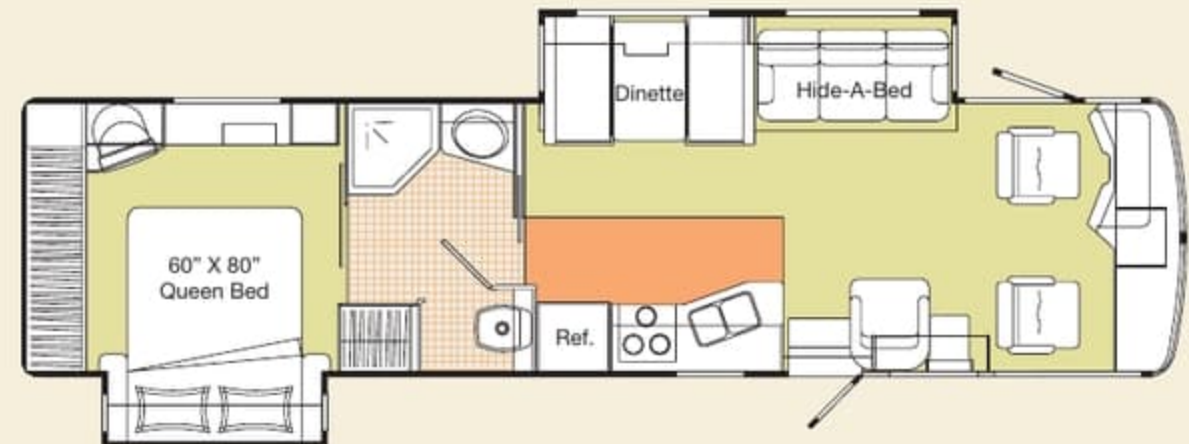
FORD-A3202FB
WORKHORSE-A3212FB



FORD-A3509FB
WORKHORSE-A3519FB

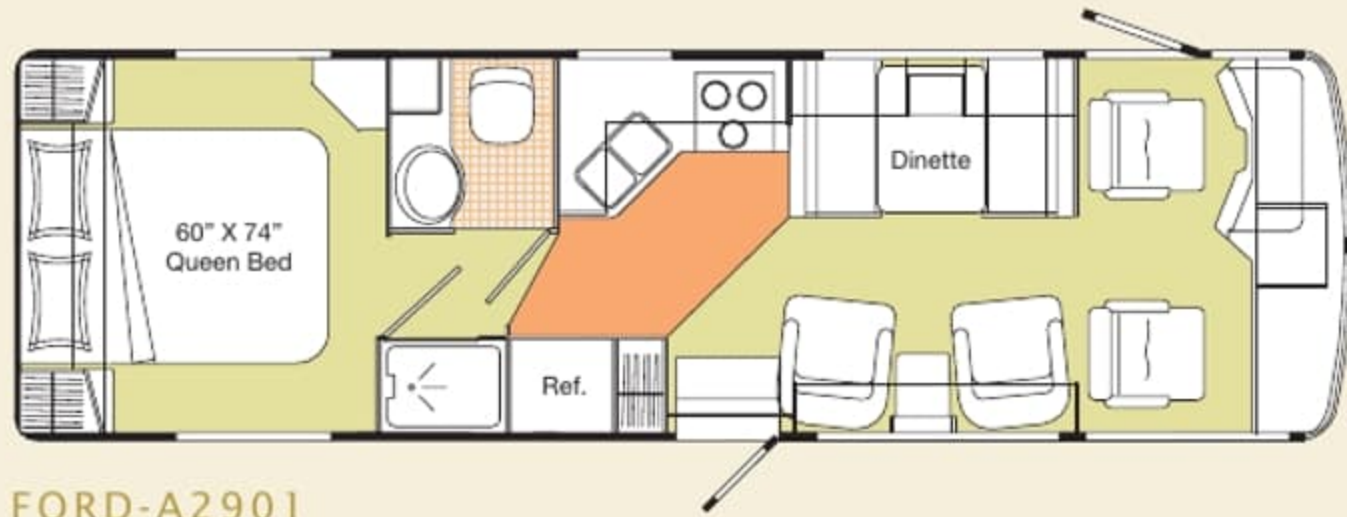


FORD-A3510GB
WORKHORSE-A3511GB

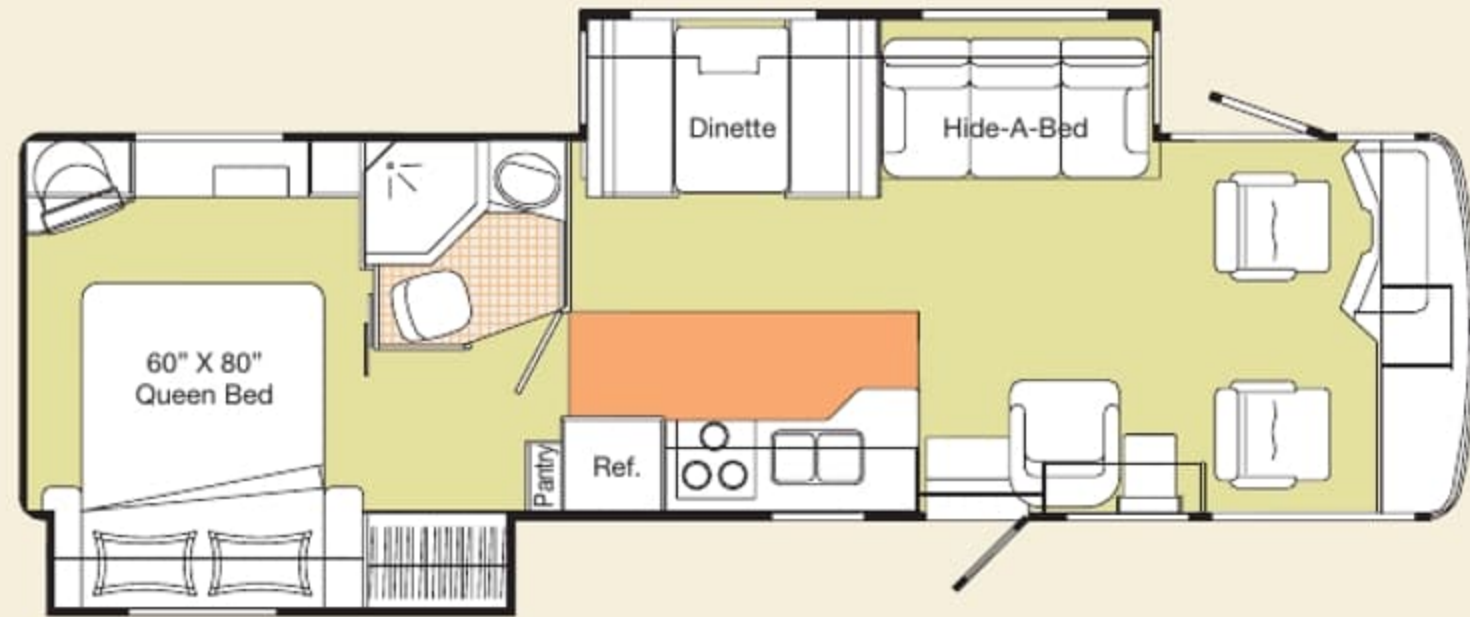


FORD-A3601FB
WORKHORSE-A3611FB

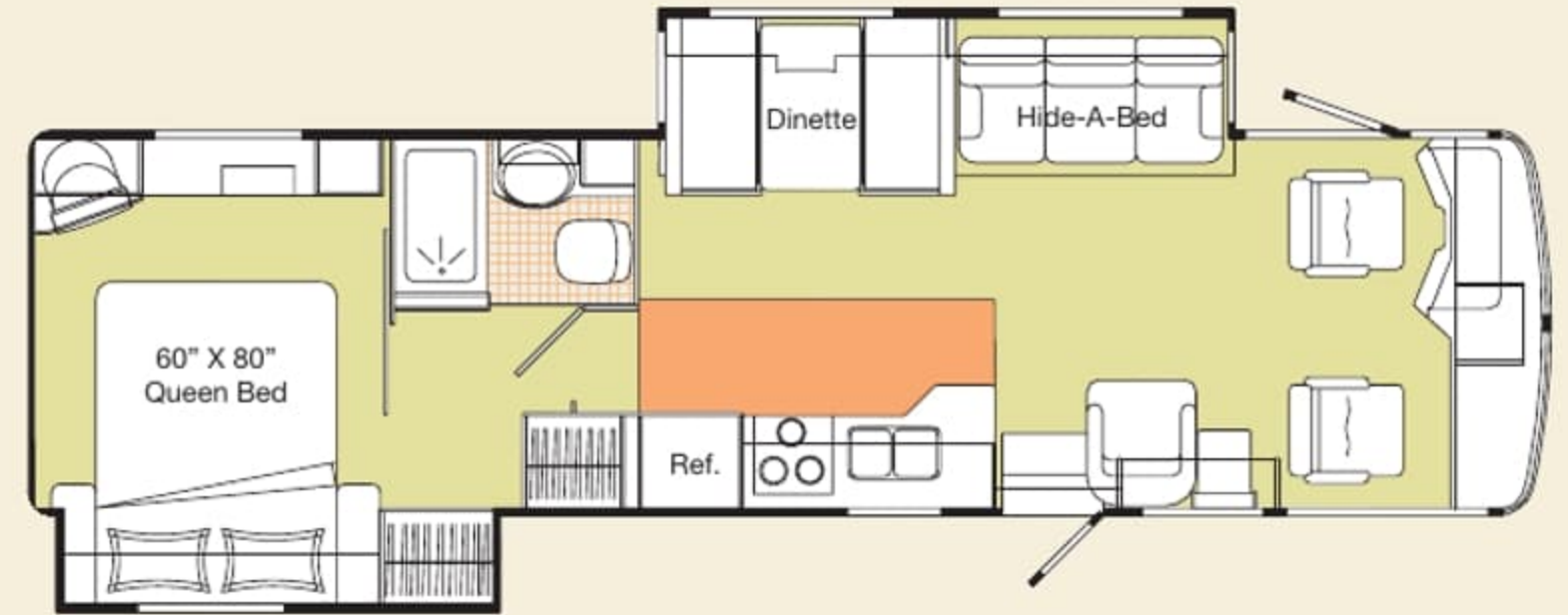
FLOOR PLANS



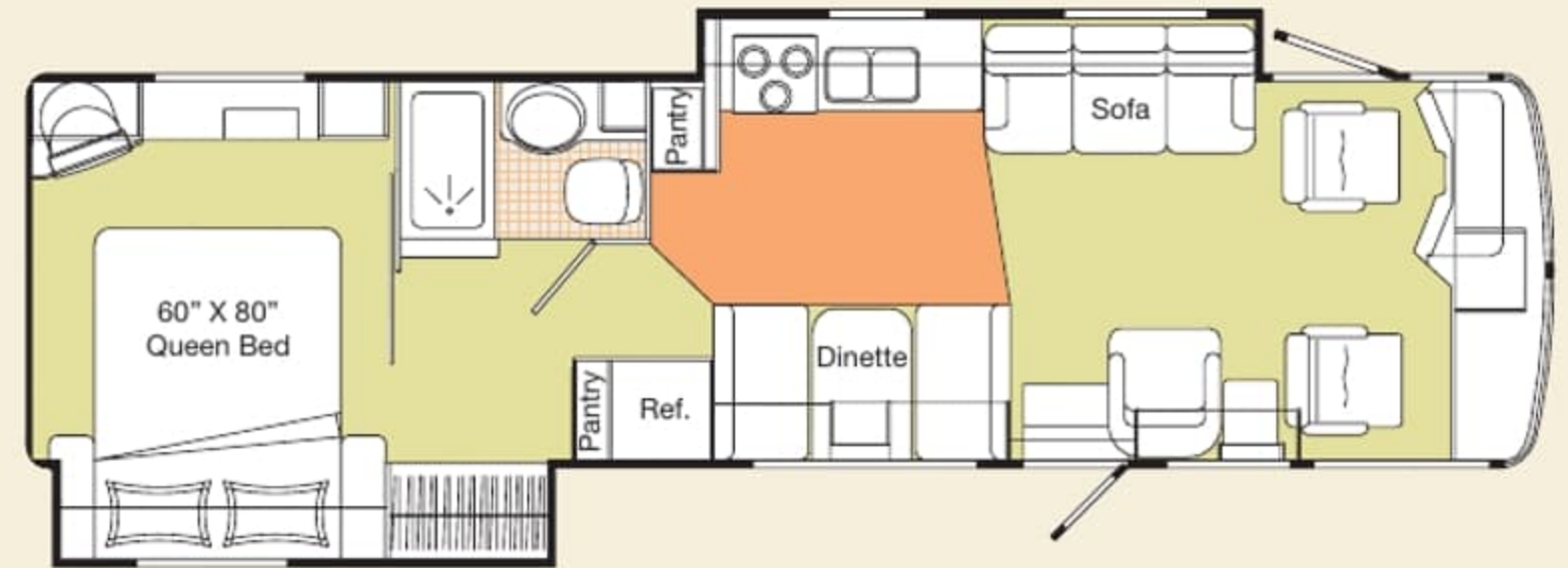
FORD-A2901



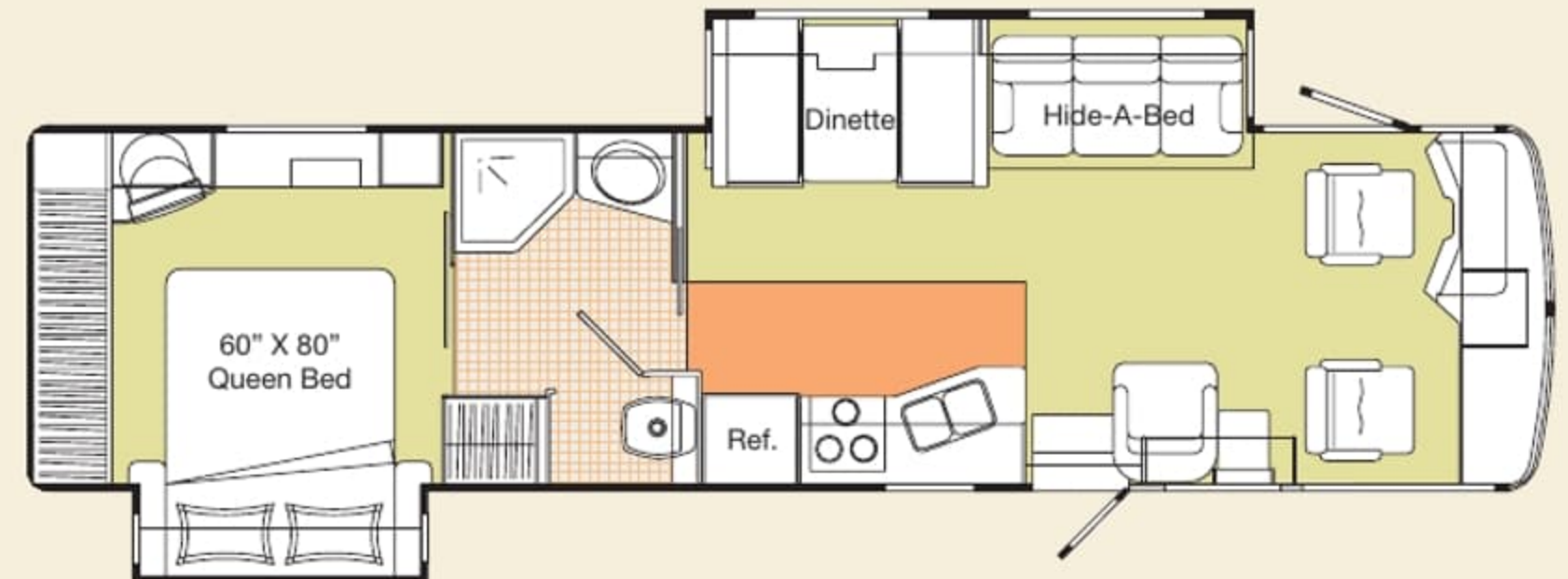
FORD-A3202FB
WORKHORSE-A3212FB



FORD-A3509FB
WORKHORSE-A3519FB



FORD-A3510GB
WORKHORSE-A3511GB



FORD-A3601FB
WORKHORSE-A3611FB

STANDARDS AND OPTIONS

S = Standard O = Option **New** = New for 2004

	A2901	A3202FB	A3509FB	A3510GB	A3601FB	A3212FB	A3511GB	A3519FB	A3611FB
VEHICULAR									
Air Conditioner - Chassis	S	S	S	S	S	S	S	S	S
Airbag Assist Suspension - Front	O	O	O	O	O	O	O	O	O
Airbag Assist Suspension - Rear	S	S	S	S	S	S	S	S	S
Alternator - 130 Amp	S	S	S	S	S	S	S	S	S
Block Heater	S	S	S	S	S	S	S	S	S
Bumper - Integrated Fibreglass Rear Bumper - Steel Reinforced	S	S	S	S	S	S	S	S	S
Chassis - Ford 6.8 L V-10 Triton 18,000 lb GW - 245/70R19.5 Tires	S	-	-	-	-	-	-	-	-
New Chassis - Ford 6.8 L V-10 Triton 22,000 lb GW - 235/80R22.5 Tires with Aluminium Wheels	-	S	S	S	-	-	-	-	-
Chassis - Workhorse W22, 22,000 lb GW, 8.1 Vortec - 235/80R22.5 Tires	-	-	-	-	S	S	S	S	S
Compass/Thermometer - Dash Mounted Directional Compass with Exterior Temperature	O	O	O	O	O	O	O	O	O
Cruise Control & Tilt Steering Wheel	S	S	S	S	S	S	S	S	S
Door - Power Window on Driver's side	S	S	S	S	S	S	S	S	S
Fans - Chrome Cockpit Ventilating with Dash Switch	O	O	O	O	O	O	O	O	O
Headlights - Halogen	S	S	S	S	S	S	S	S	S
Hitch - Trailer Hitch Receiver with Wiring & Plug - Class III	S	S	S	S	S	S	S	S	S
Jacks - HWH Hydraulic Levelling Jacks with Touchpad Control	O	S	S	S	S	S	S	S	S
Light - High Mount Stoplight - LED Long Life	S	S	S	S	S	S	S	S	S
Lights - Halogen Automotive Driving Lights	S	S	S	S	S	S	S	S	S
Mats - Driver's/Passenger's Floor Mats	S	S	S	S	S	S	S	S	S
Mirrors - Heated Remote Exterior Mirrors	S	S	S	S	S	S	S	S	S
Rust Protection	O	O	O	O	O	O	O	O	O
Slide-out - HWH Hydraulic Flush Floor Slide-out System	-	S	S	-	S	S	-	S	S
Slide-out - HWH Hydraulic Slide-out System	-	-	-	S	-	-	S	-	-
Switch - Battery Boost (Coach to Chassis Batteries)	S	S	S	S	S	S	S	S	S
Switch - Battery Selector Switch for Radio	S	S	S	S	S	S	S	S	S
Transmission Cooler	S	S	S	S	S	S	S	S	S
Undercoating - Automotive Type	S	S	S	S	S	S	S	S	S
Wheel Simulators with Tire Valve Extensions	S	S	S	S	S	S	S	S	S
Wheels - Aluminium	-	-	-	-	O	O	O	O	O
Wipers - Wet Arm Windshield Wipers with Intermittent Function	S	S	S	S	S	S	S	S	S
CONSTRUCTION									
Baggage Doors - Aluminium Baggage Doors with Gas Struts & Slam Latch	S	S	S	S	S	S	S	S	S
Gelcoat Fibreglass Front & Rear Cap	S	S	S	S	S	S	S	S	S
Lined & Lit Baggage Compartments	S	S	S	S	S	S	S	S	S
Rain Gutters with Down Spouts	S	S	S	S	S	S	S	S	S
Roof - Domed EPDM Rubber Roof	S	S	S	S	S	S	S	S	S
Steel Cab Floor, Firewall, & Dash Structure	S	S	S	S	S	S	S	S	S
Vacuum Bonded Aluminium-Framed Insulated Sidewall & Roof Construction with Thermal Breaks	S	S	S	S	S	S	S	S	S
Vacuum Bonded Gelcoat Fibreglass Sidewalls	S	S	S	S	S	S	S	S	S
Vacuum Bonded Steel-Framed Insulated Floor Construction	S	S	S	S	S	S	S	S	S
Windows - Thermal Pane	S	S	S	S	S	S	S	S	S
EXTERIOR									
Concealed Locking Fuel Fill Access	S	S	S	S	S	S	S	S	S
Door - Screened Entry Door with Stud Shield & Deadbolt Lock	S	S	S	S	S	S	S	S	S
Exterior Assist Handle - Monogrammed	S	S	S	S	S	S	S	S	S
Exterior Shower	S	S	S	S	S	S	S	S	S
Ladder - Exterior Ladder with Detachable Lower Section	S	S	S	S	S	S	S	S	S
Light - Patio	S	S	S	S	S	S	S	S	S
Lights - Rear Mounted Docking	O	O	O	O	O	O	O	O	O
Step - Double Electric Retractable	S	S	S	S	S	S	S	S	S

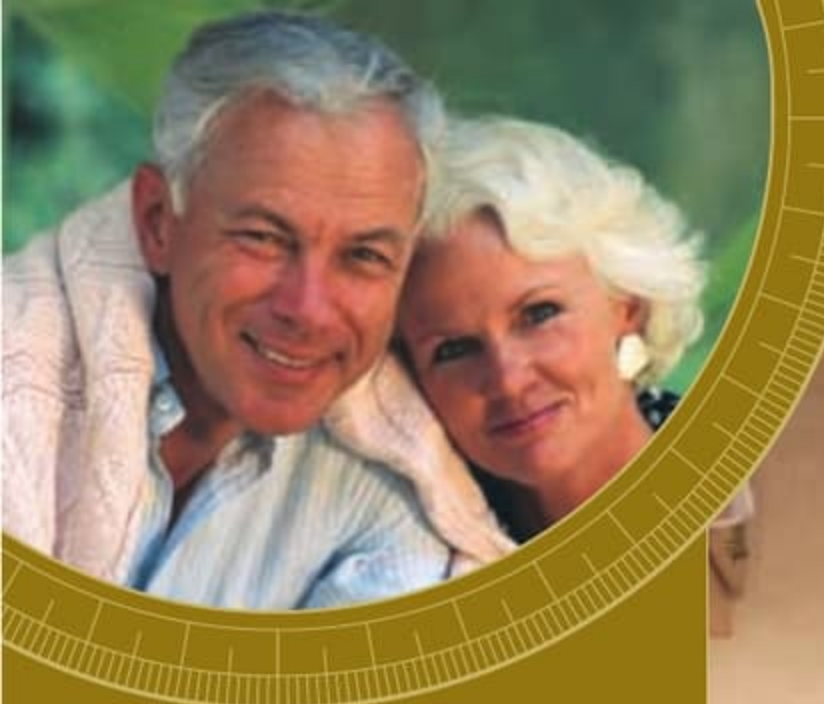
	A2901	A3202FB	A3509FB	A3510GB	A3601FB	A3212FB	A3511GB	A3519FB	A3611FB
Winter Front Close Out Package	O	O	O	O	O	O	O	O	O
INTERIOR									
Bedspring - Decorative Bed Spread with Throw Pillows	S	S	S	S	S	S	S	S	S
New Blinds - Driver's and Passenger's Side Roller	S	S	S	S	S	S	S	S	S
New Cabinetry - "Golden Maple" Cabinetry	O	O	O	O	O	O	O	O	O
Cabinets - Solid Oak Cabinet Face Framing	S	S	S	S	S	S	S	S	S
Ceiling - Domed with Automotive "Soft Touch" Headliner	S	S	S	S	S	S	S	S	S
Computer Tray - Passenger's Side	O	O	O	O	O	O	O	O	O
Covers - Insulated Vent Covers	O	O	O	O	O	O	O	O	O
Detectors - Electronic Smoke, LP & CO	S	S	S	S	S	S	S	S	S
Doors - Solid Oak Raised Panel Cabinet Doors	S	S	S	S	S	S	S	S	S
Drawers - Dual Roller Glide Drawers with Travel Lock	S	S	S	S	S	S	S	S	S
Drawers - Slide-out Drawer Option in Washer/Dryer Cabinet (N/A with washer/dryer option)	-	-	O	-	O	-	-	O	O
Fire Extinguisher - Dry Chemical	S	S	S	S	S	S	S	S	S
Flooring - Wall to Wall Carpeting in Living Area & Bedroom	S	S	S	S	S	S	S	S	S
Lamps - Courtesy Floor Lamps	S	S	S	S	S	S	S	S	S
Latches - Snap Latches on Galley, Lavatory Overhead Cabinets & Large Wardrobe Doors	S	S	S	S	S	S	S	S	S
New Lighting - Fluorescent Lighting Upgrade in Aisle w/ Halogen Upgrade under Cabinets over Couch & Bed	O	O	O	O	O	O	O	O	O
Shades - Day/Night Pleated with Bedroom Blackout	S	S	S	S	S	S	S	S	S
Skylight - with Blind in Living Area	O	O	O	O	O	O	O	O	O
Storage - Easy Under Bed Storage with Gas Struts	S	S	S	S	S	S	S	S	S
New Sun Visor - Power Driver's & Passenger's Sun Visor with Switch on Dash	O	O	O	O	O	O	O	O	O
FURNITURE									
Beds - Twin Beds (36" x 74")	O	-	-	-	-	-	-	-	-
Booth Dinette - with Slide-out Drawers & Solid Surface Edged Laminate Table	-	S	S	S	S	S	S	S	S
Booth Dinette - with Steel Framing for Seat Belts & Solid Surface Edged Laminate Table	S	-	-	-	-	-	-	-	-
Cabinet - Refreshment Centre	O	O	O	O	O	O	O	O	O
Chair - Cloth Swivel Cocktail with Solid Oak Flip Table	S	S	S	S	S	S	S	S	S
Chair - Ultra Leather Captain's in lieu of Cocktail Chair on Passenger's Side	O	O	O	O	O	O	O	O	O
Chair - Ultra Leather Cocktail in lieu of Cloth on Passenger's Side	O	O	O	O	O	O	O	O	O
Hide-a-Bed - on Driver's Side	-	S	S	-	S	S	-	S	S
Magic Bed - on Driver's Side	-	-	-	O	-	-	O	-	-
Mattress - Air Coil Mattress Upgrade on Hide-a-Bed (with 110 V Air Pump)	-	O	O	-	O	O	-	O	O
Mattress - Residential Quality Queen (60" x 74")	S	-	-	-	-	-	-	-	-
Mattress - Residential Quality Queen (60" x 80")	-	S	S	S	S	S	S	S	S
Mattress - Upgrade	O	O	O	O	O	O	O	O	O
Seat - Driver's Side Power Upgrade	O	O	O	O	O	O	O	O	O
Seats - Cloth Swivel Driver's and Passenger's Captains w/ Recline & 3-point Seat Belts	S	S	S	S	S	S	S	S	S
Seats - Ultra Leather Driver's & Passenger's Captains w/ Recline & 3-point Seat Belts	O	O	O	O	O	O	O	O	O
Sofa - Cloth Easybed in lieu of Cocktail Chairs on Passenger's Side with Flip-up Seat	O	-	-	-	-	-	-	-	-
Sofa - Cloth Easybed on Driver's Side w/ Flip-up Seat	-	-	-	S	-	-	S	-	-
Table - Oak or Maple Table & Chairs in lieu of Fixed Dinette (F - Freestanding, W - Wall Mount)	O	O	O	O	O	O	O	O	O
Versaflex Lounge - Cloth Flexsteel Lounge Sofa on Driver's Side	-	O	O	-	O	O	-	O	O

STANDARDS AND OPTIONS

S = Standard O = Option **New** = New for 2004

	A2901	A3202FB	A3509FB	A3510GB	A3601FB	A3212FB	A3511GB	A3519FB	A3611FB
VEHICULAR									
Air Conditioner - Chassis	S	S	S	S	S	S	S	S	S
Airbag Assist Suspension - Front	O	O	O	O	O	O	O	O	O
Airbag Assist Suspension - Rear	S	S	S	S	S	S	S	S	S
Alternator - 130 Amp	S	S	S	S	S	S	S	S	S
Block Heater	S	S	S	S	S	S	S	S	S
Bumper - Integrated Fibreglass Rear Bumper - Steel Reinforced	S	S	S	S	S	S	S	S	S
Chassis - Ford 6.8 LV-10 Triton 18,000 lb GW - 245/70R19.5 Tires	S	-	-	-	-	-	-	-	-
New Chassis - Ford 6.8 LV-10 Triton 22,000 lb GW - 235/80R22.5 Tires with Aluminium Wheels	-	S	S	S	S	-	-	-	-
Chassis - Workhorse W22, 22,000 lb GW, 8.1 Vortec - 235/80R22.5 Tires	-	-	-	-	S	S	S	S	S
Compass/Thermometer - Dash Mounted Directional Compas with Exterior Temperature	O	O	O	O	O	O	O	O	O
Cruise Control & Tilt Steering Wheel	S	S	S	S	S	S	S	S	S
Door - Power Window on Driver's side	S	S	S	S	S	S	S	S	S
Fans - Chrome Cockpit Ventilating with Dash Switch	O	O	O	O	O	O	O	O	O
Headlights - Halogen	S	S	S	S	S	S	S	S	S
Hitch - Trailer Hitch Receiver with Wiring & Plug - Class III	S	S	S	S	S	S	S	S	S
Jacks - HWH Hydraulic Levelling Jacks with Touchpad Control	O	S	S	S	S	S	S	S	S
Light - High Mount Stoplight - LED Long Life	S	S	S	S	S	S	S	S	S
Lights - Halogen Automotive Driving Lights	S	S	S	S	S	S	S	S	S
Mats - Driver's/Passenger's Floor Mats	S	S	S	S	S	S	S	S	S
Mirrors - Heated Remote Exterior Mirrors	S	S	S	S	S	S	S	S	S
Rust Protection	O	O	O	O	O	O	O	O	O
Slide-out - HWH Hydraulic Flush Floor Slide-out System	-	S	S	-	S	S	-	S	S
Slide-out - HWH Hydraulic Slide-out System	-	-	-	S	-	-	S	-	-
Switch - Battery Boost (Coach to Chassis Batteries)	S	S	S	S	S	S	S	S	S
Switch - Battery Selector Switch for Radio	S	S	S	S	S	S	S	S	S
Transmission Cooler	S	S	S	S	S	S	S	S	S
Undercoating - Automotive Type	S	S	S	S	S	S	S	S	S
Wheel Simulators with Tire Valve Extensions	S	S	S	S	S	S	S	S	S
Wheels - Aluminium	-	-	-	-	O	O	O	O	O
Wipers - Wet Arm Windshield Wipers with Intermittent Function	S	S	S	S	S	S	S	S	S
CONSTRUCTION									
Baggage Doors - Aluminium Baggage Doors with Gas Struts & Slam Latch	S	S	S	S	S	S	S	S	S
Gelcoat Fibreglass Front & Rear Cap	S	S	S	S	S	S	S	S	S
Lined & Lit Baggage Compartments	S	S	S	S	S	S	S	S	S
Rain Gutters with Down Spouts	S	S	S	S	S	S	S	S	S
Roof - Domed EPDM Rubber Roof	S	S	S	S	S	S	S	S	S
Steel Cab Floor, Firewall, & Dash Structure	S	S	S	S	S	S	S	S	S
Vacuum Bonded Aluminium-Framed Insulated Sidewall & Roof Construction with Thermal Breaks	S	S	S	S	S	S	S	S	S
Vacuum Bonded Gelcoat Fibreglass Sidewalls	S	S	S	S	S	S	S	S	S
Vacuum Bonded Steel-Framed Insulated Floor Construction	S	S	S	S	S	S	S	S	S
Windows - Thermal Pane	S	S	S	S	S	S	S	S	S
EXTERIOR									
Concealed Locking Fuel Fill Access	S	S	S	S	S	S	S	S	S
Door - Screened Entry Door with Stud Shield & Deadbolt Lock	S	S	S	S	S	S	S	S	S
Exterior Assist Handle - Monogrammed	S	S	S	S	S	S	S	S	S
Exterior Shower	S	S	S	S	S	S	S	S	S
Ladder - Exterior Ladder with Detachable Lower Section	S	S	S	S	S	S	S	S	S
Light - Patio	S	S	S	S	S	S	S	S	S
Lights - Rear Mounted Docking	O	O	O	O	O	O	O	O	O
Step - Double Electric Retractable	S	S	S	S	S	S	S	S	S

	A2901	A3202FB	A3509FB	A3510GB	A3601FB	A3212FB	A3511GB	A3519FB	A3611FB
Winter Front Close Out Package	O	O	O	O	O	O	O	O	O
INTERIOR									
Bedspring - Decorative Bed Spread with Throw Pillows	S	S	S	S	S	S	S	S	S
New Blinds - Driver's and Passenger's Side Roller	S	S	S	S	S	S	S	S	S
New Cabinetry - "Golden Maple" Cabinetry	O	O	O	O	O	O	O	O	O
Cabinets - Solid Oak Cabinet Face Framing	S	S	S	S	S	S	S	S	S
Ceiling - Domed with Automotive "Soft Touch" Headliner	S	S	S	S	S	S	S	S	S
Computer Tray - Passenger's Side	O	O	O	O	O	O	O	O	O
Covers - Insulated Vent Covers	O	O	O	O	O	O	O	O	O
Detectors - Electronic Smoke, LP & CO	S	S	S	S	S	S	S	S	S
Doors - Solid Oak Raised Panel Cabinet Doors	S	S	S	S	S	S	S	S	S
Drawers - Dual Roller Glide Drawers with Travel Lock	S	S	S	S	S	S	S	S	S
Drawers - Slide-out Drawer Option in Washer/Dryer Cabinet (N/A with washer/dryer option)	-	-	O	-	O	-	-	O	O
Fire Extinguisher - Dry Chemical	S	S	S	S	S	S	S	S	S
Flooring - Wall to Wall Carpeting in Living Area & Bedroom	S	S	S	S	S	S	S	S	S
Lamps - Courtesy Floor Lamps	S	S	S	S	S	S	S	S	S
Latches - Snap Latches on Galley, Lavatory Overhead Cabinets & Large Wardrobe Doors	S	S	S	S	S	S	S	S	S
New Lighting - Fluorescent Lighting Upgrade in Aisle w/ Halogen Upgrade under Cabinets over Couch & Bed	O	O	O	O	O	O	O	O	O
Shades - Day/Night Pleated with Bedroom Blackout	S	S	S	S	S	S	S	S	S
Skylight - with Blind in Living Area	O	O	O	O	O	O	O	O	O
Storage - Easy Under Bed Storage with Gas Struts	S	S	S	S	S	S	S	S	S
New Sun Visor - Power Driver's & Passenger's Sun Visor with Switch on Dash	O	O	O	O	O	O	O	O	O
FURNITURE									
Beds - Twin Beds (36" x 74")	O	-	-	-	-	-	-	-	-
Booth Dinette - with Slide-out Drawers & Solid Surface Edged Laminate Table	-	S	S	S	S	S	S	S	S
Booth Dinette - with Steel Framing for Seat Belts & Solid Surface Edged Laminate Table	S	-	-	-	-	-	-	-	-
Cabinet - Refreshment Centre	O	O	O	O	O	O	O	O	O
Chair - Cloth Swivel Cocktail with Solid Oak Flip Table	S	S	S	S	S	S	S	S	S
Chair - Ultra Leather Captain's in lieu of Cocktail Chair on Passenger's Side	O	O	O	O	O	O	O	O	O
Chair - Ultra Leather Cocktail in lieu of Cloth on Passenger's Side	O	O	O	O	O	O	O	O	O
Hide-a-Bed - on Driver's Side	-	S	S	-	S	S	-	S	S
Magic Bed - on Driver's Side	-	-	-	O	-	-	O	-	-
Mattress - Air Coil Mattress Upgrade on Hide-a-Bed (with 110 V Air Pump)	-	O	O	-	O	O	-	O	O
Mattress - Residential Quality Queen (60" x 74")	S	-	-	-	-	-	-	-	-
Mattress - Residential Quality Queen (60" x 80")	-	S	S	S	S	S	S	S	S
Mattress - Upgrade	O	O	O	O	O	O	O	O	O
Seat - Driver's Side Power Upgrade	O	O	O	O	O	O	O	O	O
Seats - Cloth Swivel Driver's and Passenger's Captains w/ Recline & 3-point Seat Belts	S	S	S	S	S	S	S	S	S
Seats - Ultra Leather Driver's & Passenger's Captains w/ Recline & 3-point Seat Belts	O	O	O	O	O	O	O	O	O
Sofa - Cloth Easybed in lieu of Cocktail Chairs on Passenger's Side with Flip-up Seat	O	-	-	-	-	-	-	-	-
Sofa - Cloth Easybed on Driver's Side w/ Flip-up Seat	-	-	-	S	-	-	S	-	-
Table - Oak or Maple Table & Chairs in lieu of Fixed Dinette (F - Freestanding, W - Wall Mount)	O	O	O	O	O	O	O	O	O
Versaflex Lounge - Cloth Flexsteel Lounge Sofa on Driver's Side	-	O	O	-	O	O	-	O	O



COME HOME TO FREEDOM

Travel south for the winter. Nestle into a botanical park so spring can awaken your senses. Cruise the summertime coastline. Experience autumn's patchwork palette. Then do it all over again.

A3511GB shown with Shimmering Pearl Décor >>



S = Standard O = Option **New** = New for 2004

GALLEY

Bi-fold Range Cover - Recessed	S	S	S	S	S	S	S	S	S
Coffee Maker	O	O	O	O	O	O	O	O	O
Cooktop - Recessed Cooktop with High Output Burner	S	S	S	S	S	S	S	S	S
Countertop - Laminate with Solid Surface Edging, Stainless Steel Sink with Flush Sink Covers	S	S	S	S	S	S	S	S	S
Countertop - Solid Surface Counter in Galley	-	O	O	O	O	O	O	O	O
Flooring - Hardwood in Galley	S	S	S	S	S	S	S	S	S
Micro/Convection Oven - (OTR) with 110 V Range Hood & Light	S	S	S	S	S	S	S	S	S
Oven - LP Gas	O	O	O	O	O	O	O	O	O
Pantry - Half Height Pantry above Washer & Dryer Cabinet	-	-	-	-	-	-	-	-	O
Refrigerator - Dometic LP/Electric 8 cu ft with Temp Control & Raised Sculptured Insert	S	S	S	S	S	S	S	S	S
Refrigerator - Dometic Two Door, Gas/Electric with Ice Maker & Black Stainless Doors (10 cu ft)	O	O	O	O	O	O	O	O	O

LAVATORY

Fan - Thermostatically Controlled (non Reversible) in Lavatory or Toilet Room	S	S	S	S	S	S	S	S	S
Flooring - Linoleum Flooring in Bathroom	S	S	S	S	S	S	S	S	S
Skylight - in Shower	S	S	S	S	S	S	S	S	S
Toilet - Bravura Single Pedal Deep Bowl	S	S	S	S	S	S	S	S	S

ENTERTAINMENT

CB Antenna - Includes Coax Lead under Dash	O	O	O	O	O	O	O	O	O
DVD Player with Upgrade to Premium Switch Box	O	O	O	O	O	O	O	O	O
Master Control - Audio/Video Master Control Switch Box	S	S	S	S	S	S	S	S	S
Pre-wire - for AC or DC Bedroom TV	S	-	-	-	-	-	-	-	-
Pre-wire - Satellite Dish (with 12 V Power, 110 V & KVH Cable)	S	S	S	S	S	S	S	S	S
Radio Monoplex System	S	S	S	S	S	S	S	S	S
Satellite Dish - KVH LF In Motion - without Receiver	O	O	O	O	O	O	O	O	O
Satellite Dish - KVH SF Automatic - without Receiver	O	O	O	O	O	O	O	O	O
Satellite Dish - Wineguard with Electronic Elevation Sensor	O	O	O	O	O	O	O	O	O
Stereo - AM/FM Cassette/CD - 80 W	O	O	O	O	O	O	O	O	O
Stereo - Big Button AM/FM CD in Dash Stereo - 80 W	S	S	S	S	S	S	S	S	S
Stereo - Big Button AM/FM Stereo with 6-Stack in Dash CD Changer - 80 W	O	O	O	O	O	O	O	O	O
Stereo - Exterior AM/FM CD Stereo with Shielded Speakers	O	O	O	O	O	O	O	O	O
Telephone & Cable TV Hook-up - Exterior	S	S	S	S	S	S	S	S	S
TV - AC 20" Flat Screen Colour Stereo with Remote in Bedroom	-	S	S	S	S	S	S	S	S
TV - AC 20" Flat Screen Colour Stereo with Remote in Front Overhead Cabinet	S	S	S	S	S	S	S	S	S
TV - DC 13" Color with Remote in Oak Cabinet in Bedroom	O	-	-	-	-	-	-	-	-
TV Antenna - Roof Top Retractable Antenna with Booster	S	S	S	S	S	S	S	S	S
VCR - AC Video Cassette Recorder	S	S	S	S	S	S	S	S	S

HEATING, VENTILATING AND AIR CONDITIONING

Air Conditioner - Dual Ducted (2) 13,500 BTU with Heat Strip and EMS	-	O	O	O	O	O	O	O	O
Air Conditioner - Ducted Roof 13,500 BTU with Heat Strip	S	S	S	S	S	S	S	S	S
Air Conditioner - Ducted Roof 15,000 BTU with Heat Strip	-	O	O	O	O	O	O	O	O
Fan - Thermostatically Controlled Fan in Living Area	O	O	O	O	O	O	O	O	O
Furnace - 2 x 25,000 BTU Furnace with Electronic Ignition	-	S	S	S	S	S	S	S	S
Furnace - 35,000 BTU Furnace with Electronic Ignition	S	-	-	-	-	-	-	-	-
Heater - Rear Auxiliary Automotive with Electric Water Valve	S	S	S	S	S	S	S	S	S

ELECTRICAL

Batteries - Dual RV 27 Deep Cycle Auxiliary (12 V)	S	S	S	S	S	S	S	S	S
Batteries - Upgrade to 2 x 6 Volt Coach Batteries	O	O	O	O	O	O	O	O	O
Bi-Directional Isolator Relay Delay (BIRD) Battery Charging	S	S	S	S	S	S	S	S	S
Converter - 120/12 V with Charger & Changeover Relay	S	S	S	S	S	S	S	S	S
Energy Management System (EMS)	-	O	O	O	O	O	O	O	O
Generator - 5.5 KW Onan Marquis Gold with Dash-Mounted Hour Meter	S	S	S	S	S	S	S	S	S
Panel - 30 Amp Electrical Service	S	S	S	S	S	S	S	S	S
Panel - 50 Amp Electrical Service with EMS	-	-	O	O	O	O	O	O	O
Pre-wire - Solar Panel	S	S	S	S	S	S	S	S	S
Switch - Electronic Battery Disconnect (Coach Batteries)	S	S	S	S	S	S	S	S	S

PLUMBING AND LP SYSTEMS

Black Tank Flush System	S	S	S	S	S	S	S	S	S
Holding Tanks - Enclosed, Insulated, Dual Heated Waste Tanks	S	S	S	S	S	S	S	S	S
LP Tank - Easy Access Propane Tank	S	S	S	S	S	S	S	S	S
Panel - Systems Monitor	S	S	S	S	S	S	S	S	S
Roughed in Plumbing for Washer Dryer	-	-	-	-	-	-	-	-	-
Switch - 3-Way Water Pump Switch	S	S	S	S	S	S	S	S	S
Valve - Water Heater By-Pass	S	S	S	S	S	S	S	S	S
Water Heater - Electronic Ignition LP Gas/Electric/Motoraid (Capacity in US Gallons)	6	6	10	10	10	6	10	10	10
Water Purifier - Faucet in Galley	S	S	S	S	S	S	S	S	S
Water Tank - Enclosed, Insulated & Dual Heated	S	S	S	S	S	S	S	S	S
Water Tank Fill & Bleach Port	S	S	S	S	S	S	S	S	S
Winterization System with Antifreeze Pickup	S	S	S	S	S	S	S	S	S

SYSTEMS

Central Vacuum with Outlet in Baggage Compartment	S	S	S	S	S	S	S	S	S
Rear-view Camera/Monitor - Color LCD Display Mounted in Dash	S	S	S	S	S	S	S	S	S
Washer/Dryer (vented)	-	-	O	-	O	-	O	-	O

OPTIONAL AWNING PACKAGES

Awning - Weathershield Equipped A&E Elite 9000 Patio-Acrylic (length shown)	16	14	15	15	18	14	15	15	18
Awning - Weathershield Equipped A&E Elite Slide Topper (number shown)	-	2	2	2	2	2	2	2	2
Awning - Weathershield Equipped A&E Elite Window Awnings (number shown)	3	3	3	3	2	3	3	3	2

Factory P.D.I.	O	O	O	O	O	O	O	O	O
----------------	---	---	---	---	---	---	---	---	---

Product improvement is a continuing process at Triple E Recreational Vehicles. Thus, we reserve the right to change specifications on any or all products without prior notice, errors and omissions excepted. Triple E Recreational Vehicles is under no obligation to undertake modification to units manufactured prior to changes on specifications.

SPECIFICATIONS

COMMANDER 2004	A2901	A3202FB	A3509FB	A3510FB	A3601FB	A3212FB	A3519FB	A3511GB	A3611FB
	FORD CHASSIS			WORKHORSE CUSTOM CHASSIS					
GVWR - lbs (kg)	18,000 (8,160)	22,000 (10,000)	22,000 (10,000)	22,000 (10,000)	22,000 (10,000)	22,000 (10,000)	22,000 (10,000)	22,000 (10,000)	22,000 (10,000)
UVW - lbs (kg)	15,012 (6,809)	18,195 (8,251)	18,686 (8,476)	18,413 (8,352)	18,929 (8,586)	18,735 (8,498)	19,228 (8,740)	18,995 (8,634)	19,471 (8,850)
NCC - lbs (kg)	2,988 (1,355)	3,805 (1,726)	3,314 (1,503)	3,547 (1,609)	3,071 (1,393)	3,265 (1,481)	2,772 (1,260)	3,005 (1,366)	2,529 (1,150)
Wheelbase - inches (mm)	190 (4,826)	208 (5,283)	228 (5,791)	228 (5,791)	228 (5,791)	208 (5,283)	228 (5,791)	228 (5,791)	228 (5,791)
Length - feet (mm)	29'10" (9,098)	32'7" (9,932)	34'3" (10,439)	34'3" (10,439)	35'9" (10,896)	32'7" (9,932)	34'3" (10,439)	34'3" (10,439)	35'9" (10,896)
Width - feet (mm)	8'4" (2,534)	8'4" (2,534)	8'4" (2,534)	8'4" (2,534)	8'4" (2,534)	8'4" (2,534)	8'4" (2,534)	8'4" (2,534)	8'4" (2,534)
Height (incl. A/C) - feet (mm)	11'10" (3,607)	11'11" (3,632)	11'11" (3,632)	11'11" (3,632)	11'11" (3,632)	11'11" (3,632)	12' (3,658)	12' (3,658)	12' (3,658)
* Water Tank Cap. - gal (l)	84 (319)	84 (319)	88 (333)	88 (333)	88 (333)	84 (319)	88 (333)	88 (333)	88 (333)
Water heater	6 (22.7)	6 (22.7)	10 (37.8)	10 (37.8)	10 (37.8)	6 (22.7)	10 (37.8)	10 (37.8)	10 (37.8)
Black Holding Tank Cap. - gal (l)	39 (147.4)	39 (147.4)	39 (147.4)	39 (147.4)	42 (158.8)	39 (147.4)	39 (147.4)	39 (147.4)	42 (158.8)
Grey Holding Tank Cap. - gal (l)	39 (147.4)	42 (158.8)	42 (158.8)	42 (158.8)	39 (147.4)	42 (158.8)	42 (158.8)	42 (158.8)	39 (147.4)
Fuel Cap. - gal (l)	75 (284)	75 (284)	75 (284)	75 (284)	75 (284)	75 (284)	75 (284)	75 (284)	75 (284)
Propane Cap. - gal (l)	25.3 (95.8)	24.2 (91.5)	29.2 (110.4)	29.2 (110.4)	29.2 (110.4)	24.2 (91.5)	29.2 (110.4)	29.2 (110.4)	29.2 (110.4)

* Includes water heater

NOTE: All capacities in US gallons

GVWR

GROSS VEHICLE WEIGHT RATING means the maximum permissible weight of this motorhome. The GVWR is equal to or greater than the sum of the unloaded vehicle weight (UVW) plus the net carrying capacity (NCC).

UVW

UNLOADED VEHICLE WEIGHT means the weight of the motorhome as built at the factory with full fuel, engine oil, and coolants. The UVW does not include cargo, fresh water, LP gas, occupants, factory or dealer installed accessories.

NCC

NET CARRYING CAPACITY means the maximum weight of all occupants, including the driver, personal belongings, food, fresh water, LP gas, tools, tongue weight of towed vehicle, factory and dealer installed accessories, etc., that can be carried by this motorhome. (NCC is equal to or less than GVWR minus UVW.)

NOTE: Please see your dealer for weights of factory installed options.



- The luxurious cockpit allows for spectacular views on the road and a deluxe seating area when stopped.
- A convenient hamper allows you to stow away your laundry. (Select models only)
- New for 2004 - an optional DVD player with upgrade to a premium switch box.
- Sturdy aluminium exterior baggage doors are accessible with gas-powered struts.
- Optional electric visors keep the sun out of your eyes.
- The colour LCD rearview camera/monitor will assist you when backing up, while the big button radio makes it easy to switch stations while on the move.
- The full-featured lavatory includes a solid oak vanity and skylight in the shower.



COME HOME TO FREEDOM

Travel south for the winter. Nestle into a botanical park so spring can awaken your senses. Cruise the summertime coastline. Experience autumn's patchwork palette. Then do it all over again.

A3511GB shown with Shimmering Pearl Décor >>



S = Standard O = Option **New** = New for 2004

GALLEY

Bi-fold Range Cover - Recessed	S	S	S	S	S	S	S	S	S
Coffee Maker	O	O	O	O	O	O	O	O	O
Cooktop - Recessed Cooktop with High Output Burner	S	S	S	S	S	S	S	S	S
Countertop - Laminate with Solid Surface Edging, Stainless Steel Sink with Flush Sink Covers	S	S	S	S	S	S	S	S	S
Countertop - Solid Surface Counter in Galley	-	O	O	O	O	O	O	O	O
Flooring - Hardwood in Galley	S	S	S	S	S	S	S	S	S
Micro/Convection Oven - (OTR) with 110 V Range Hood & Light	S	S	S	S	S	S	S	S	S
Oven - LP Gas	O	O	O	O	O	O	O	O	O
Pantry - Half Height Pantry above Washer & Dryer Cabinet	-	-	-	-	-	-	-	O	-
Refrigerator - Dometic LP/Electric 8 cu ft with Temp Control & Raised Sculptured Inset	S	S	S	S	S	S	S	S	S
Refrigerator - Dometic Two Door, Gas/Electric with Ice Maker & Black Stainless Doors (10 cu ft)	O	O	O	O	O	O	O	O	O

LAVATORY

Fan - Thermostatically Controlled (non Reversible) in Lavatory or Toilet Room	S	S	S	S	S	S	S	S	S
Flooring - Linoleum Flooring in Bathroom	S	S	S	S	S	S	S	S	S
Skylight - in Shower	S	S	S	S	S	S	S	S	S
Toilet - Bravura Single Pedal Deep Bowl	S	S	S	S	S	S	S	S	S

ENTERTAINMENT

CB Antenna - Includes Coax Lead under Dash	O	O	O	O	O	O	O	O	O
DVD Player with Upgrade to Premium Switch Box	O	O	O	O	O	O	O	O	O
Master Control - Audio/Video Master Control Switch Box	S	S	S	S	S	S	S	S	S
Pre-wire - for AC or DC Bedroom TV	S	-	-	-	-	-	-	-	-
Pre-wire - Satellite Dish (with 12 V Power, 110 V & KVH Cable)	S	S	S	S	S	S	S	S	S
Radio Monoplex System	S	S	S	S	S	S	S	S	S
Satellite Dish - KVH LF In Motion - without Receiver	O	O	O	O	O	O	O	O	O
Satellite Dish - KVH SF Automatic - without Receiver	O	O	O	O	O	O	O	O	O
Satellite Dish - Wineguard with Electronic Elevation Sensor	O	O	O	O	O	O	O	O	O
Stereo - AM/FM Cassette/CD - 80 W	O	O	O	O	O	O	O	O	O
Stereo - Big Button AM/FM CD in Dash Stereo - 80 W	S	S	S	S	S	S	S	S	S
Stereo - Big Button AM/FM Stereo with 6-Stack in Dash CD Changer - 80 W	O	O	O	O	O	O	O	O	O
Stereo - Exterior AM/FM CD Stereo with Shielded Speakers	O	O	O	O	O	O	O	O	O
Telephone & Cable TV Hook-up - Exterior	S	S	S	S	S	S	S	S	S
TV - AC 20" Flat Screen Colour Stereo with Remote in Bedroom	-	S	S	S	S	S	S	S	S
TV - AC 20" Flat Screen Colour Stereo with Remote in Front Overhead Cabinet	S	S	S	S	S	S	S	S	S
TV - DC 13" Color with Remote in Oak Cabinet in Bedroom	O	-	-	-	-	-	-	-	-
TV Antenna - Roof Top Retractable Antenna with Booster	S	S	S	S	S	S	S	S	S
VCR - AC Video Cassette Recorder	S	S	S	S	S	S	S	S	S

HEATING, VENTILATING AND AIR CONDITIONING

Air Conditioner - Dual Ducted (2) 13,500 BTU with Heat Strip and EMS	-	O	O	O	O	O	O	O	O
Air Conditioner - Ducted Roof 13,500 BTU with Heat Strip	S	S	S	S	S	S	S	S	S
Air Conditioner - Ducted Roof 15,000 BTU with Heat Strip	-	O	O	O	O	O	O	O	O
Fan - Thermostatically Controlled Fan in Living Area	O	O	O	O	O	O	O	O	O
Furnace - 2 x 25,000 BTU Furnace with Electronic Ignition	-	S	S	S	S	S	S	S	S
Furnace - 35,000 BTU Furnace with Electronic Ignition	S	-	-	-	-	-	-	-	-
Heater - Rear Auxiliary Automotive with Electric Water Valve	S	S	S	S	S	S	S	S	S

ELECTRICAL

Batteries - Dual RV 27 Deep Cycle Auxiliary (12 V)	S	S	S	S	S	S	S	S	S
Batteries - Upgrade to 2 x 6 Volt Coach Batteries	O	O	O	O	O	O	O	O	O
Bi-Directional Isolator Relay Delay (BIRD) Battery Charging	S	S	S	S	S	S	S	S	S
Converter - 120/12 V with Charger & Changeover Relay	S	S	S	S	S	S	S	S	S
Energy Management System (EMS)	-	O	O	O	O	O	O	O	O
Generator - 5.5 KW Onan Marquis Gold with Dash-Mounted Hour Meter	S	S	S	S	S	S	S	S	S
Panel - 30 Amp Electrical Service	S	S	S	S	S	S	S	S	S
Panel - 50 Amp Electrical Service with EMS	-	-	O	O	O	O	O	O	O
Pre-wire - Solar Panel	S	S	S	S	S	S	S	S	S
Switch - Electronic Battery Disconnect (Coach Batteries)	S	S	S	S	S	S	S	S	S

PLUMBING AND LP SYSTEMS

Black Tank Flush System	S	S	S	S	S	S	S	S	S
Holding Tanks - Enclosed, Insulated, Dual Heated Waste Tanks	S	S	S	S	S	S	S	S	S
LP Tank - Easy Access Propane Tank	S	S	S	S	S	S	S	S	S
Panel - Systems Monitor	S	S	S	S	S	S	S	S	S
Roughed in Plumbing for Washer Dryer	-	-	-	-	-	-	-	-	-
Switch - 3-Way Water Pump Switch	S	S	S	S	S	S	S	S	S
Valve - Water Heater By-Pass	S	S	S	S	S	S	S	S	S
Water Heater - Electronic Ignition LP Gas/Electric/Motoraid (Capacity in US Gallons)	6	6	10	10	6	10	10	10	10
Water Purifier - Faucet in Galley	S	S	S	S	S	S	S	S	S
Water Tank - Enclosed, Insulated & Dual Heated	S	S	S	S	S	S	S	S	S
Water Tank Fill & Bleach Port	S	S	S	S	S	S	S	S	S
Winterization System with Antifreeze Pickup	S	S	S	S	S	S	S	S	S

SYSTEMS

Central Vacuum with Outlet in Baggage Compartment	S	S	S	S	S	S	S	S	S
Rear-view Camera/Monitor - Color LCD Display Mounted in Dash	S	S	O	-	-	-	-	-	O
Washer/Dryer (vented)	-	-	O	-	O	-	-	-	O

OPTIONAL AWNING PACKAGES

Awning - Weathershield Equipped A&E Elite 9000 Patio-Acrylic (length shown)	16	14	15	15	18	14	15	15	18
Awning - Weathershield Equipped A&E Elite Slide Topper (number shown)	-	2	2	2	2	2	2	2	2
Awning - Weathershield Equipped A&E Elite Window Awnings (number shown)	3	3	3	2	3	3	3	2	2

Factory P.D.I.

Factory P.D.I.	O	O	O	O	O	O	O	O	O
----------------	---	---	---	---	---	---	---	---	---

Product improvement is a continuing process at Triple E Recreational Vehicles. Thus, we reserve the right to change specifications on any or all products without prior notice, errors and omissions excepted. Triple E Recreational Vehicles is under no obligation to undertake modification to units manufactured prior to changes on specifications.

SPECIFICATIONS

COMMANDER 2004	A2901	A3202FB	A3509FB	A3510FB	A3601FB	A3212FB	A3519FB	A3511GB	A3611FB
	FORD CHASSIS			WORKHORSE CUSTOM CHASSIS					
GVWR - lbs (kg)	18,000 (8,160)	22,000 (10,000)	22,000 (10,000)	22,000 (10,000)	22,000 (10,000)	22,000 (10,000)	22,000 (10,000)	22,000 (10,000)	22,000 (10,000)
UVW - lbs (kg)	15,012 (6,809)	18,195 (8,251)	18,686 (8,476)	18,413 (8,352)	18,929 (8,586)	18,735 (8,498)	19,228 (8,740)	18,995 (8,634)	19,471 (8,850)
NCC - lbs (kg)	2,988 (1,355)	3,805 (1,726)	3,314 (1,503)	3,547 (1,609)	3,071 (1,393)	3,265 (1,481)	2,772 (1,260)	3,005 (1,366)	2,529 (1,150)
Wheelbase - inches (mm)	190 (4,826)	208 (5,283)	228 (5,791)	228 (5,791)	228 (5,791)	208 (5,283)	228 (5,791)	228 (5,791)	228 (5,791)
Length - feet (mm)	29'10" (9,098)	32'7" (9,932)	34'3" (10,439)	34'3" (10,439)	35'9" (10,896)	32'7" (9,932)	34'3" (10,439)	34'3" (10,439)	35'9" (10,896)
Width - feet (mm)	8'4" (2,534)	8'4" (2,534)	8'4" (2,534)	8'4" (2,534)	8'4" (2,534)	8'4" (2,534)	8'4" (2,534)	8'4" (2,534)	8'4" (2,534)
Height (incl. A/C) - feet (mm)	11'10" (3,607)	11'11" (3,632)	11'11" (3,632)	11'11" (3,632)	11'11" (3,632)	11'11" (3,632)	12' (3,658)	12' (3,658)	12' (3,658)
* Water Tank Cap. - gal (l)	84 (319)	84 (319)	88 (333)	88 (333)	88 (333)	84 (319)	88 (333)	88 (333)	88 (333)
Water heater	6 (22.7)	6 (22.7)	10 (37.8)	10 (37.8)	10 (37.8)	6 (22.7)	10 (37.8)	10 (37.8)	10 (37.8)
Black Holding Tank Cap. - gal (l)	39 (147.4)	39 (147.4)	39 (147.4)	39 (147.4)	42 (158.8)	39 (147.4)	39 (147.4)	39 (147.4)	42 (158.8)
Grey Holding Tank Cap. - gal (l)	39 (147.4)	42 (158.8)	42 (158.8)	42 (158.8)	39 (147.4)	42 (158.8)	42 (158.8)	42 (158.8)	39 (147.4)
Fuel Cap. - gal (l)	75 (284)	75 (284)	75 (284)	75 (284)	75 (284)	75 (284)	75 (284)	75 (284)	75 (284)
Propane Cap. - gal (l)	25.3 (95.8)	24.2 (91.5)	29.2 (110.4)	29.2 (110.4)	29.2 (110.4)	24.2 (91.5)	29.2 (110.4)	29.2 (110.4)	29.2 (110.4)

* Includes water heater

NOTE: All capacities in US gallons

GVWR

GROSS VEHICLE WEIGHT RATING means the maximum permissible weight of this motorhome. The GVWR is equal to or greater than the sum of the unloaded vehicle weight (UVW) plus the net carrying capacity (NCC).

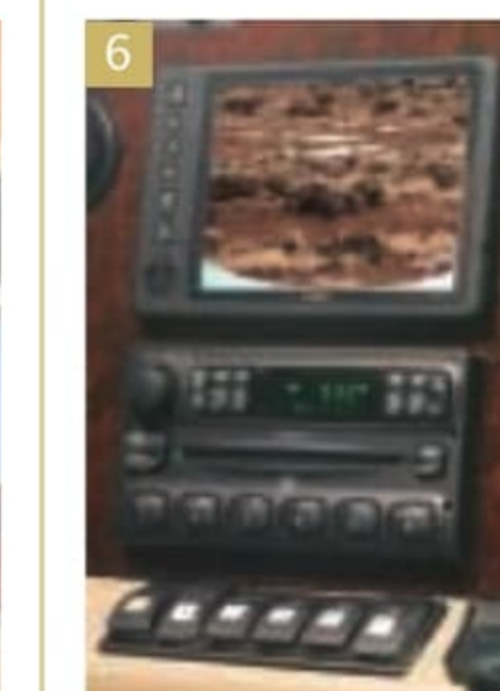
UVW

UNLOADED VEHICLE WEIGHT means the weight of the motorhome as built at the factory with full fuel, engine oil, and coolants. The UVW does not include cargo, fresh water, LP gas, occupants, factory or dealer installed accessories.

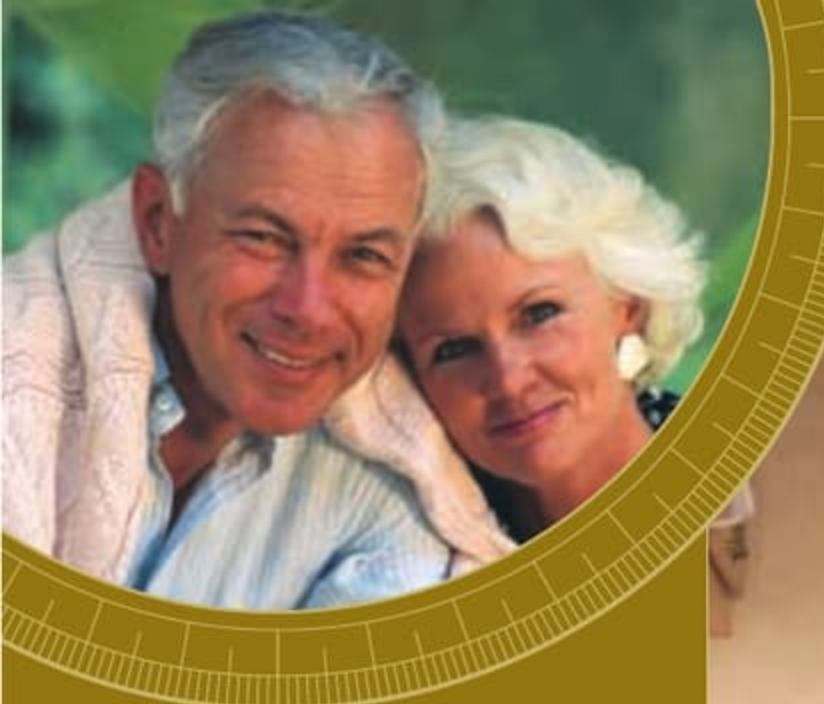
NCC

NET CARRYING CAPACITY means the maximum weight of all occupants, including the driver, personal belongings, food, fresh water, LP gas, tools, tongue weight of towed vehicle, factory and dealer installed accessories, etc., that can be carried by this motorhome. (NCC is equal to or less than GVWR minus UVW.)

NOTE: Please see your dealer for weights of factory installed options.



- The luxurious cockpit allows for spectacular views on the road and a deluxe seating area when stopped.
- A convenient hamper allows you to stow away your laundry. (Select models only)
- New for 2004 - an optional DVD player with upgrade to a premium switch box.
- Sturdy aluminium exterior baggage doors are accessible with gas-powered struts.
- Optional electric visors keep the sun out of your eyes.
- The colour LCD rearview camera/monitor will assist you when backing up, while the big button radio makes it easy to switch stations while on the move.
- The full-featured lavatory includes a solid oak vanity and skylight in the shower.



COME HOME TO FREEDOM

Travel south for the winter. Nestle into a botanical park so spring can awaken your senses. Cruise the summertime coastline. Experience autumn's patchwork palette. Then do it all over again.

A3511GB shown with Shimmering Pearl Décor >>



S = Standard O = Option **New** = New for 2004

GALLEY

Bi-fold Range Cover - Recessed	S	S	S	S	S	S	S	S	S
Coffee Maker	O	O	O	O	O	O	O	O	O
Cooktop - Recessed Cooktop with High Output Burner	S	S	S	S	S	S	S	S	S
Countertop - Laminate with Solid Surface Edging, Stainless Steel Sink with Flush Sink Covers	S	S	S	S	S	S	S	S	S
Countertop - Solid Surface Counter in Galley	-	O	O	O	O	O	O	O	O
Flooring - Hardwood in Galley	S	S	S	S	S	S	S	S	S
Micro/Convection Oven - (OTR) with 110 V Range Hood & Light	S	S	S	S	S	S	S	S	S
Oven - LP Gas	O	O	O	O	O	O	O	O	O
Pantry - Half Height Pantry above Washer & Dryer Cabinet	-	-	-	-	-	-	-	-	O
Refrigerator - Dometic LP/Electric 8 cu ft with Temp Control & Raised Sculptured Inset	S	S	S	S	S	S	S	S	S
Refrigerator - Dometic Two Door, Gas/Electric with Ice Maker & Black Stainless Doors (10 cu ft)	O	O	O	O	O	O	O	O	O

LAVATORY

Fan - Thermostatically Controlled (non Reversible) in Lavatory or Toilet Room	S	S	S	S	S	S	S	S	S
Flooring - Linoleum Flooring in Bathroom	S	S	S	S	S	S	S	S	S
Skylight - in Shower	S	S	S	S	S	S	S	S	S
Toilet - Bravura Single Pedal Deep Bowl	S	S	S	S	S	S	S	S	S

ENTERTAINMENT

CB Antenna - Includes Coax Lead under Dash	O	O	O	O	O	O	O	O	O
DVD Player with Upgrade to Premium Switch Box	O	O	O	O	O	O	O	O	O
Master Control - Audio/Video Master Control Switch Box	S	S	S	S	S	S	S	S	S
Pre-wire - for AC or DC Bedroom TV	S	-	-	-	-	-	-	-	-
Pre-wire - Satellite Dish (with 12 V Power, 110 V & KVH Cable)	S	S	S	S	S	S	S	S	S
Radio Monoplex System	S	S	S	S	S	S	S	S	S
Satellite Dish - KVH LF In Motion - without Receiver	O	O	O	O	O	O	O	O	O
Satellite Dish - KVH SF Automatic - without Receiver	O	O	O	O	O	O	O	O	O
Satellite Dish - Wineguard with Electronic Elevation Sensor	O	O	O	O	O	O	O	O	O
Stereo - AM/FM Cassette/CD - 80 W	O	O	O	O	O	O	O	O	O
Stereo - Big Button AM/FM CD in Dash Stereo - 80 W	S	S	S	S	S	S	S	S	S
Stereo - Big Button AM/FM Stereo with 6-Stack in Dash CD Changer - 80 W	O	O	O	O	O	O	O	O	O
Stereo - Exterior AM/FM CD Stereo with Shielded Speakers	O	O	O	O	O	O	O	O	O
Telephone & Cable TV Hook-up - Exterior	S	S	S	S	S	S	S	S	S
TV - AC 20" Flat Screen Colour Stereo with Remote in Bedroom	-	S	S	S	S	S	S	S	S
TV - AC 20" Flat Screen Colour Stereo with Remote in Front Overhead Cabinet	S	S	S	S	S	S	S	S	S
TV - DC 13" Color with Remote in Oak Cabinet in Bedroom	O	-	-	-	-	-	-	-	-
TV Antenna - Roof Top Retractable Antenna with Booster	S	S	S	S	S	S	S	S	S
VCR - AC Video Cassette Recorder	S	S	S	S	S	S	S	S	S

HEATING, VENTILATING AND AIR CONDITIONING

Air Conditioner - Dual Ducted (2) 13,500 BTU with Heat Strip and EMS	-	O	O	O	O	O	O	O	O
Air Conditioner - Ducted Roof 13,500 BTU with Heat Strip	S	S	S	S	S	S	S	S	S
Air Conditioner - Ducted Roof 15,000 BTU with Heat Strip	-	O	O	O	O	O	O	O	O
Fan - Thermostatically Controlled Fan in Living Area	O	O	O	O	O	O	O	O	O
Furnace - 2 x 25,000 BTU Furnace with Electronic Ignition	-	S	S	S	S	S	S	S	S
Furnace - 35,000 BTU Furnace with Electronic Ignition	S	-	-	-	-	-	-	-	-
Heater - Rear Auxiliary Automotive with Electric Water Valve	S	S	S	S	S	S	S	S	S

ELECTRICAL

Batteries - Dual RV 27 Deep Cycle Auxiliary (12 V)	S	S	S	S	S	S	S	S	S
Batteries - Upgrade to 2 x 6 Volt Coach Batteries	O	O	O	O	O	O	O	O	O
Bi-Directional Isolator Relay Delay (BIRD) Battery Charging	S	S	S	S	S	S	S	S	S
Converter - 120/12 V with Charger & Changeover Relay	S	S	S	S	S	S	S	S	S
Energy Management System (EMS)	-	O	O	O	O	O	O	O	O
Generator - 5.5 KW Onan Marquis Gold with Dash-Mounted Hour Meter	S	S	S	S	S	S	S	S	S
Panel - 30 Amp Electrical Service	S	S	S	S	S	S	S	S	S
Panel - 50 Amp Electrical Service with EMS	-	-	O	O	O	O	O	O	O
Pre-wire - Solar Panel	S	S	S	S	S	S	S	S	S
Switch - Electronic Battery Disconnect (Coach Batteries)	S	S	S	S	S	S	S	S	S

PLUMBING AND LP SYSTEMS

Black Tank Flush System	S	S	S	S	S	S	S	S	S
Holding Tanks - Enclosed, Insulated, Dual Heated Waste Tanks	S	S	S	S	S	S	S	S	S
LP Tank - Easy Access Propane Tank	S	S	S	S	S	S	S	S	S
Panel - Systems Monitor	S	S	S	S	S	S	S	S	S
Roughed in Plumbing for Washer Dryer	-	-	-	-	-	-	-	-	-
Switch - 3-Way Water Pump Switch	S	S	S	S	S	S	S	S	S
Valve - Water Heater By-Pass	S	S	S	S	S	S	S	S	S
Water Heater - Electronic Ignition LP Gas/Electric/Motoraid (Capacity in US Gallons)	6	6	10	10	10	6	10	10	10
Water Purifier - Faucet in Galley	S	S	S	S	S	S	S	S	S
Water Tank - Enclosed, Insulated & Dual Heated	S	S	S	S	S	S	S	S	S
Water Tank Fill & Bleach Port	S	S	S	S	S	S	S	S	S
Winterization System with Antifreeze Pickup	S	S	S	S	S	S	S	S	S

SYSTEMS

Central Vacuum with Outlet in Baggage Compartment	S	S	S	S	S	S	S	S	S
Rear-view Camera/Monitor - Color LCD Display Mounted in Dash	S	S	S	S	S	S	S	S	S
Washer/Dryer (vented)	-	-	O	-	O	-	O	-	O

OPTIONAL AWNING PACKAGES

Awning - Weathershield Equipped A&E Elite 9000 Patio-Acrylic (length shown)	16	14	15	15	18	14	15	15	18
Awning - Weathershield Equipped A&E Elite Slide Topper (number shown)	-	2	2	2	2	2	2	2	2
Awning - Weathershield Equipped A&E Elite Window Awnings (number shown)	3	3	3	3	2	3	3	3	2

Factory P.D.I.

Factory P.D.I.	O	O	O	O	O	O	O	O	O
----------------	---	---	---	---	---	---	---	---	---

Product improvement is a continuing process at Triple E Recreational Vehicles. Thus, we reserve the right to change specifications on any or all products without prior notice, errors and omissions excepted. Triple E Recreational Vehicles is under no obligation to undertake modification to units manufactured prior to changes on specifications.

SPECIFICATIONS

COMMANDER 2004	A2901	A3202FB	A3509FB	A3510FB	A3601FB	A3212FB	A3519FB	A3511GB	A3611FB
	FORD CHASSIS			WORKHORSE CUSTOM CHASSIS					
GVWR - lbs (kg)	18,000 (8,160)	22,000 (10,000)	22,000 (10,000)	22,000 (10,000)	22,000 (10,000)	22,000 (10,000)	22,000 (10,000)	22,000 (10,000)	22,000 (10,000)
UVW - lbs (kg)	15,012 (6,809)	18,195 (8,251)	18,686 (8,476)	18,413 (8,352)	18,929 (8,586)	18,735 (8,498)	19,228 (8,740)	18,995 (8,634)	19,471 (8,850)
NCC - lbs (kg)	2,988 (1,355)	3,805 (1,726)	3,314 (1,503)	3,547 (1,609)	3,071 (1,393)	3,265 (1,481)	2,772 (1,260)	3,005 (1,366)	2,529 (1,150)
Wheelbase - inches (mm)	190 (4,826)	208 (5,283)	228 (5,791)	228 (5,791)	228 (5,791)	208 (5,283)	228 (5,791)	228 (5,791)	228 (5,791)
Length - feet (mm)	29'10" (9,098)	32'7" (9,932)	34'3" (10,439)	34'3" (10,439)	35'9" (10,896)	32'7" (9,932)	34'3" (10,439)	34'3" (10,439)	35'9" (10,896)
Width - feet (mm)	8'4" (2,534)	8'4" (2,534)	8'4" (2,534)	8'4" (2,534)	8'4" (2,534)	8'4" (2,534)	8'4" (2,534)	8'4" (2,534)	8'4" (2,534)
Height (incl. A/C) - feet (mm)	11'10" (3,607)	11'11" (3,632)	11'11" (3,632)	11'11" (3,632)	11'11" (3,632)	11'11" (3,632)	12' (3,658)	12' (3,658)	12' (3,658)
* Water Tank Cap. - gal (l)	84 (319)	84 (319)	88 (333)	88 (333)	88 (333)	84 (319)	88 (333)	88 (333)	88 (333)
Water heater	6 (22.7)	6 (22.7)	10 (37.8)	10 (37.8)	10 (37.8)	6 (22.7)	10 (37.8)	10 (37.8)	10 (37.8)
Black Holding Tank Cap. - gal (l)	39 (147.4)	39 (147.4)	39 (147.4)	39 (147.4)	42 (158.8)	39 (147.4)	39 (147.4)	39 (147.4)	42 (158.8)
Grey Holding Tank Cap. - gal (l)	39 (147.4)	42 (158.8)	42 (158.8)	42 (158.8)	39 (147.4)	42 (158.8)	42 (158.8)	42 (158.8)	39 (147.4)
Fuel Cap. - gal (l)	75 (284)	75 (284)	75 (284)	75 (284)	75 (284)	75 (284)	75 (284)	75 (284)	75 (284)
Propane Cap. - gal (l)	25.3 (95.8)	24.2 (91.5)	29.2 (110.4)	29.2 (110.4)	29.2 (110.4)	24.2 (91.5)	29.2 (110.4)	29.2 (110.4)	29.2 (110.4)

* Includes water heater

NOTE: All capacities in US gallons

GVWR

GROSS VEHICLE WEIGHT RATING means the maximum permissible weight of this motorhome. The GVWR is equal to or greater than the sum of the unloaded vehicle weight (UVW) plus the net carrying capacity (NCC).

UVW

UNLOADED VEHICLE WEIGHT means the weight of the motorhome as built at the factory with full fuel, engine oil, and coolants. The UVW does not include cargo, fresh water, LP gas, occupants, factory or dealer installed accessories.

NCC

NET CARRYING CAPACITY means the maximum weight of all occupants, including the driver, personal belongings, food, fresh water, LP gas, tools, tongue weight of towed vehicle, factory and dealer installed accessories, etc., that can be carried by this motorhome. (NCC is equal to or less than GVWR minus UVW.)

NOTE: Please see your dealer for weights of factory installed options.



- The luxurious cockpit allows for spectacular views on the road and a deluxe seating area when stopped.
- A convenient hamper allows you to stow away your laundry. (Select models only)
- New for 2004 - an optional DVD player with upgrade to a premium switch box.
- Sturdy aluminium exterior baggage doors are accessible with gas-powered struts.
- Optional electric visors keep the sun out of your eyes.
- The colour LCD rearview camera/monitor will assist you when backing up, while the big button radio makes it easy to switch stations while on the move.
- The full-featured lavatory includes a solid oak vanity and skylight in the shower.



COME HOME TO FREEDOM

Travel south for the winter. Nestle into a botanical park so spring can awaken your senses. Cruise the summertime coastline. Experience autumn's patchwork palette. Then do it all over again.

A3511GB shown with Shimmering Pearl Décor >>



S = Standard O = Option **New** = New for 2004

GALLEY

Bi-fold Range Cover - Recessed	S	S	S	S	S	S	S	S	S
Coffee Maker	O	O	O	O	O	O	O	O	O
Cooktop - Recessed Cooktop with High Output Burner	S	S	S	S	S	S	S	S	S
Countertop - Laminate with Solid Surface Edging, Stainless Steel Sink with Flush Sink Covers	S	S	S	S	S	S	S	S	S
Countertop - Solid Surface Counter in Galley	-	O	O	O	O	O	O	O	O
Flooring - Hardwood in Galley	S	S	S	S	S	S	S	S	S
Micro/Convection Oven - (OTR) with 110 V Range Hood & Light	S	S	S	S	S	S	S	S	S
Oven - LP Gas	O	O	O	O	O	O	O	O	O
Pantry - Half Height Pantry above Washer & Dryer Cabinet	-	-	-	-	-	-	-	O	-
Refrigerator - Dometic LP/Electric 8 cu ft with Temp Control & Raised Sculptured Inset	S	S	S	S	S	S	S	S	S
Refrigerator - Dometic Two Door, Gas/Electric with Ice Maker & Black Stainless Doors (10 cu ft)	O	O	O	O	O	O	O	O	O

LAVATORY

Fan - Thermostatically Controlled (non Reversible) in Lavatory or Toilet Room	S	S	S	S	S	S	S	S	S
Flooring - Linoleum Flooring in Bathroom	S	S	S	S	S	S	S	S	S
Skylight - in Shower	S	S	S	S	S	S	S	S	S
Toilet - Bravura Single Pedal Deep Bowl	S	S	S	S	S	S	S	S	S

ENTERTAINMENT

CB Antenna - Includes Coax Lead under Dash	O	O	O	O	O	O	O	O	O
DVD Player with Upgrade to Premium Switch Box	O	O	O	O	O	O	O	O	O
Master Control - Audio/Video Master Control Switch Box	S	S	S	S	S	S	S	S	S
Pre-wire - for AC or DC Bedroom TV	S	-	-	-	-	-	-	-	-
Pre-wire - Satellite Dish (with 12 V Power, 110 V & KVH Cable)	S	S	S	S	S	S	S	S	S
Radio Monoplex System	S	S	S	S	S	S	S	S	S
Satellite Dish - KVH LF In Motion - without Receiver	O	O	O	O	O	O	O	O	O
Satellite Dish - KVH SF Automatic - without Receiver	O	O	O	O	O	O	O	O	O
Satellite Dish - Wineguard with Electronic Elevation Sensor	O	O	O	O	O	O	O	O	O
Stereo - AM/FM Cassette/CD - 80 W	O	O	O	O	O	O	O	O	O
Stereo - Big Button AM/FM CD in Dash Stereo - 80 W	S	S	S	S	S	S	S	S	S
Stereo - Big Button AM/FM Stereo with 6-Stack in Dash CD Changer - 80 W	O	O	O	O	O	O	O	O	O
Stereo - Exterior AM/FM CD Stereo with Shielded Speakers	O	O	O	O	O	O	O	O	O
Telephone & Cable TV Hook-up - Exterior	S	S	S	S	S	S	S	S	S
TV - AC 20" Flat Screen Colour Stereo with Remote in Bedroom	-	S	S	S	S	S	S	S	S
TV - AC 20" Flat Screen Colour Stereo with Remote in Front Overhead Cabinet	S	S	S	S	S	S	S	S	S
TV - DC 13" Color with Remote in Oak Cabinet in Bedroom	O	-	-	-	-	-	-	-	-
TV Antenna - Roof Top Retractable Antenna with Booster	S	S	S	S	S	S	S	S	S
VCR - AC Video Cassette Recorder	S	S	S	S	S	S	S	S	S

HEATING, VENTILATING AND AIR CONDITIONING

Air Conditioner - Dual Ducted (2) 13,500 BTU with Heat Strip and EMS	-	O	O	O	O	O	O	O	O
Air Conditioner - Ducted Roof 13,500 BTU with Heat Strip	S	S	S	S	S	S	S	S	S
Air Conditioner - Ducted Roof 15,000 BTU with Heat Strip	-	O	O	O	O	O	O	O	O
Fan - Thermostatically Controlled Fan in Living Area	O	O	O	O	O	O	O	O	O
Furnace - 2 x 25,000 BTU Furnace with Electronic Ignition	-	S	S	S	S	S	S	S	S
Furnace - 35,000 BTU Furnace with Electronic Ignition	S	-	-	-	-	-	-	-	-
Heater - Rear Auxiliary Automotive with Electric Water Valve	S	S	S	S	S	S	S	S	S

ELECTRICAL

Batteries - Dual RV 27 Deep Cycle Auxiliary (12 V)	S	S	S	S	S	S	S	S	S
Batteries - Upgrade to 2 x 6 Volt Coach Batteries	O	O	O	O	O	O	O	O	O
Bi-Directional Isolator Relay Delay (BIRD) Battery Charging	S	S	S	S	S	S	S	S	S
Converter - 120/12 V with Charger & Changeover Relay	S	S	S	S	S	S	S	S	S
Energy Management System (EMS)	-	O	O	O	O	O	O	O	O
Generator - 5.5 KW Onan Marquis Gold with Dash-Mounted Hour Meter	S	S	S	S	S	S	S	S	S
Panel - 30 Amp Electrical Service	S	S	S	S	S	S	S	S	S
Panel - 50 Amp Electrical Service with EMS	-	-	O	O	O	O	O	O	O
Pre-wire - Solar Panel	S	S	S	S	S	S	S	S	S
Switch - Electronic Battery Disconnect (Coach Batteries)	S	S	S	S	S	S	S	S	S

PLUMBING AND LP SYSTEMS

Black Tank Flush System	S	S	S	S	S	S	S	S	S
Holding Tanks - Enclosed, Insulated, Dual Heated Waste Tanks	S	S	S	S	S	S	S	S	S
LP Tank - Easy Access Propane Tank	S	S	S	S	S	S	S	S	S
Panel - Systems Monitor	S	S	S	S	S	S	S	S	S
Roughed in Plumbing for Washer Dryer	-	-	-	-	-	-	-	-	-
Switch - 3-Way Water Pump Switch	S	S	S	S	S	S	S	S	S
Valve - Water Heater By-Pass	S	S	S	S	S	S	S	S	S
Water Heater - Electronic Ignition LP Gas/Electric/Motoraid (Capacity in US Gallons)	6	6	10	10	6	10	10	10	10
Water Purifier - Faucet in Galley	S	S	S	S	S	S	S	S	S
Water Tank - Enclosed, Insulated & Dual Heated	S	S	S	S	S	S	S	S	S
Water Tank Fill & Bleach Port	S	S	S	S	S	S	S	S	S
Winterization System with Antifreeze Pickup	S	S	S	S	S	S	S	S	S

SYSTEMS

Central Vacuum with Outlet in Baggage Compartment	S	S	S	S	S	S	S	S	S
Rear-view Camera/Monitor - Color LCD Display Mounted in Dash	S	S	O	-	-	-	-	-	O
Washer/Dryer (vented)	-	-	O	-	O	-	-	-	S

OPTIONAL AWNING PACKAGES

Awning - Weathershield Equipped A&E Elite 9000 Patio-Acrylic (length shown)	16	14	15	15	18	14	15	15	18
Awning - Weathershield Equipped A&E Elite Slide Topper (number shown)	-	2	2	2	2	2	2	2	2
Awning - Weathershield Equipped A&E Elite Window Awnings (number shown)	3	3	3	2	3	3	3	2	2

Factory P.D.I.

Factory P.D.I.	O	O	O	O	O	O	O	O	O
----------------	---	---	---	---	---	---	---	---	---

Product improvement is a continuing process at Triple E Recreational Vehicles. Thus, we reserve the right to change specifications on any or all products without prior notice, errors and omissions excepted. Triple E Recreational Vehicles is under no obligation to undertake modification to units manufactured prior to changes on specifications.

SPECIFICATIONS

COMMANDER 2004	A2901	A3202FB	A3509FB	A3510FB	A3601FB	A3212FB	A3519FB	A3511GB	A3611FB
	FORD CHASSIS			WORKHORSE CUSTOM CHASSIS					
GVWR - lbs (kg)	18,000 (8,160)	22,000 (10,000)	22,000 (10,000)	22,000 (10,000)	22,000 (10,000)	22,000 (10,000)	22,000 (10,000)	22,000 (10,000)	22,000 (10,000)
UVW - lbs (kg)	15,012 (6,809)	18,195 (8,251)	18,686 (8,476)	18,413 (8,352)	18,929 (8,586)	18,735 (8,498)	19,228 (8,740)	18,995 (8,634)	19,471 (8,850)
NCC - lbs (kg)	2,988 (1,355)	3,805 (1,726)	3,314 (1,503)	3,547 (1,609)	3,071 (1,393)	3,265 (1,481)	2,772 (1,260)	3,005 (1,366)	2,529 (1,150)
Wheelbase - inches (mm)	190 (4,826)	208 (5,283)	228 (5,791)	228 (5,791)	228 (5,791)	208 (5,283)	228 (5,791)	228 (5,791)	228 (5,791)
Length - feet (mm)	29'10" (9,098)	32'7" (9,932)	34'3" (10,439)	34'3" (10,439)	35'9" (10,896)	32'7" (9,932)	34'3" (10,439)	34'3" (10,439)	35'9" (10,896)
Width - feet (mm)	8'4" (2,534)	8'4" (2,534)	8'4" (2,534)	8'4" (2,534)	8'4" (2,534)	8'4" (2,534)	8'4" (2,534)	8'4" (2,534)	8'4" (2,534)
Height (incl. A/C) - feet (mm)	11'10" (3,607)	11'11" (3,632)	11'11" (3,632)	11'11" (3,632)	11'11" (3,632)	11'11" (3,632)	12' (3,658)	12' (3,658)	12' (3,658)
* Water Tank Cap. - gal (l)	84 (319)	84 (319)	88 (333)	88 (333)	88 (333)	84 (319)	88 (333)	88 (333)	88 (333)
Water heater	6 (22.7)	6 (22.7)	10 (37.8)	10 (37.8)	10 (37.8)	6 (22.7)	10 (37.8)	10 (37.8)	10 (37.8)
Black Holding Tank Cap. - gal (l)	39 (147.4)	39 (147.4)	39 (147.4)	39 (147.4)	42 (158.8)	39 (147.4)	39 (147.4)	39 (147.4)	42 (158.8)
Grey Holding Tank Cap. - gal (l)	39 (147.4)	42 (158.8)	42 (158.8)	42 (158.8)	39 (147.4)	42 (158.8)	42 (158.8)	42 (158.8)	39 (147.4)
Fuel Cap. - gal (l)	75 (284)	75 (284)	75 (284)	75 (284)	75 (284)	75 (284)	75 (284)	75 (284)	75 (284)
Propane Cap. - gal (l)	25.3 (95.8)	24.2 (91.5)	29.2 (110.4)	29.2 (110.4)	29.2 (110.4)	24.2 (91.5)	29.2 (110.4)	29.2 (110.4)	29.2 (110.4)

* Includes water heater

NOTE: All capacities in US gallons

GVWR

GROSS VEHICLE WEIGHT RATING means the maximum permissible weight of this motorhome. The GVWR is equal to or greater than the sum of the unloaded vehicle weight (UVW) plus the net carrying capacity (NCC).

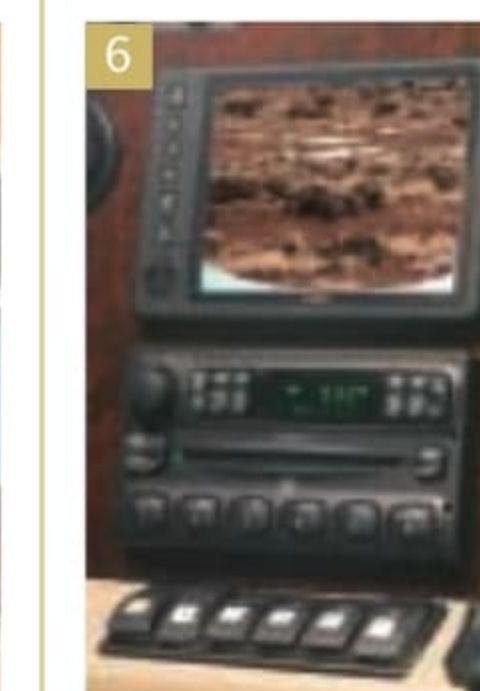
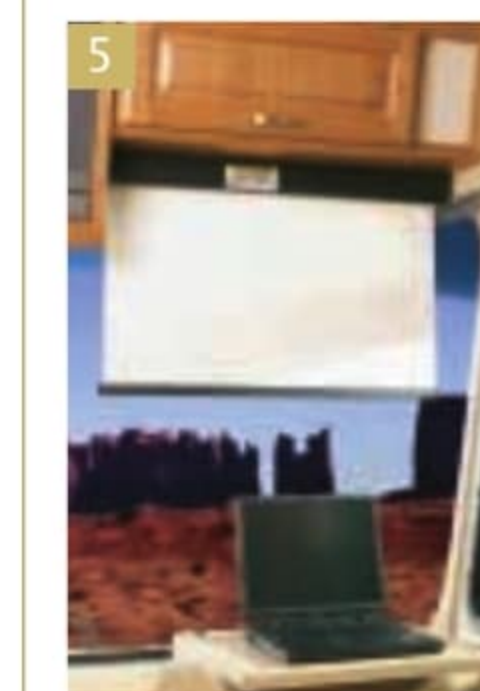
UVW

UNLOADED VEHICLE WEIGHT means the weight of the motorhome as built at the factory with full fuel, engine oil, and coolants. The UVW does not include cargo, fresh water, LP gas, occupants, factory or dealer installed accessories.

NCC

NET CARRYING CAPACITY means the maximum weight of all occupants, including the driver, personal belongings, food, fresh water, LP gas, tools, tongue weight of towed vehicle, factory and dealer installed accessories, etc., that can be carried by this motorhome. (NCC is equal to or less than GVWR minus UVW.)

NOTE: Please see your dealer for weights of factory installed options.

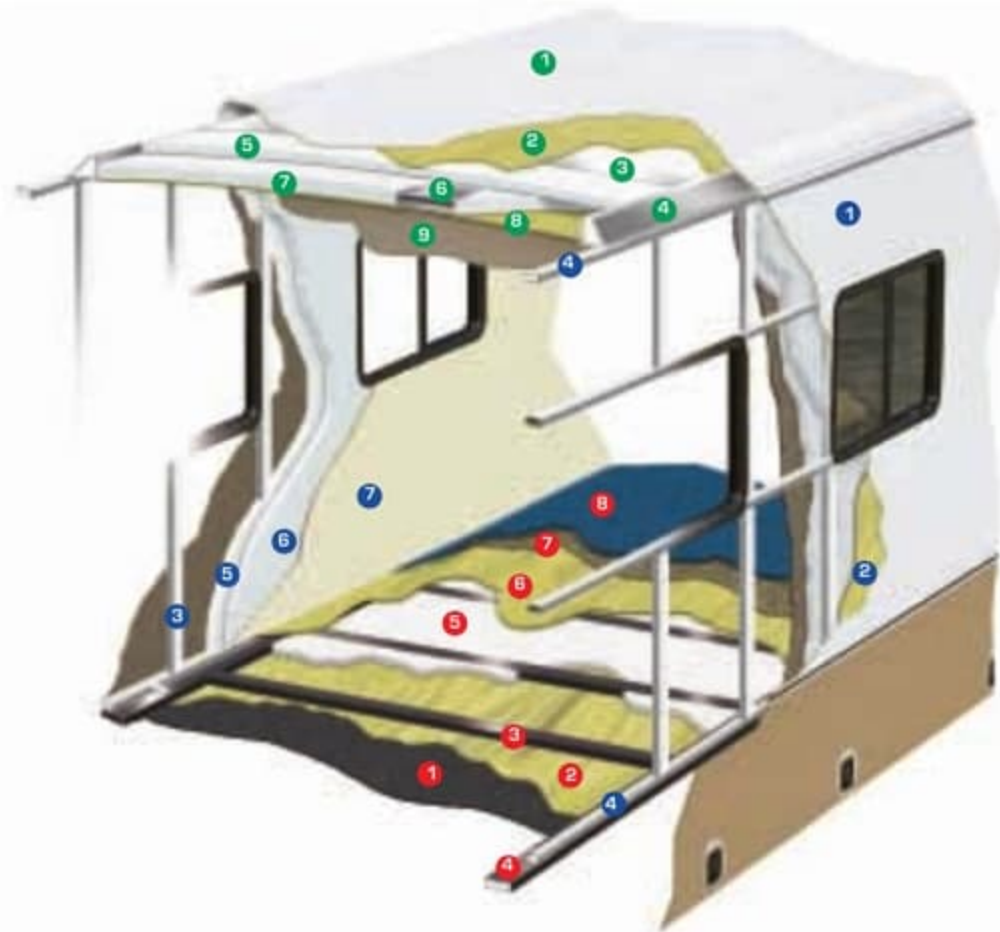


- The luxurious cockpit allows for spectacular views on the road and a deluxe seating area when stopped.
- A convenient hamper allows you to stow away your laundry. (Select models only)
- New for 2004 - an optional DVD player with upgrade to a premium switch box.
- Sturdy aluminium exterior baggage doors are accessible with gas-powered struts.
- Optional electric visors keep the sun out of your eyes.
- The colour LCD rearview camera/monitor will assist you when backing up, while the big button radio makes it easy to switch stations while on the move.
- The full-featured lavatory includes a solid oak vanity and skylight in the shower.



CONSTRUCTION

The major considerations in building a top quality motorhome are long lasting beauty coupled with the ability to stand up to any weather conditions. The coach is an aluminium and steel framed structure with vacuum bonded gel coat fibreglass sidewalls and a domed roof finished with a seamless EPDM membrane.



Floor [Exterior to Interior]

1. One Piece Woven Poly-Propylene Underbelly
2. 3/8" Plywood
3. Tubular Steel Framing (Welded)
4. Styrofoam Filled Wall Support Plates
5. 1" Block Styrofoam Insulation
6. 1/2" Plywood
7. Carpet Underlay
8. Carpeting (Floor covering)

Sidewalls [Exterior to Interior]

1. Seamless Fibreglass Exterior
2. Luaun Structural Backer
3. Aluminium Framing (Welded)
4. Styrofoam Filled Floor and Roof Plate
5. 1" Block Styrofoam Insulation
6. 1/2" Styrofoam Thermal Break Insulation
7. Interior Decorative Luaun Wall Panels

Roof [Exterior to Interior]

1. One Piece EPDM Roofing
2. Luaun Backer
3. Aluminium Roof Truss
4. Styrofoam Filled Roof Truss Supports
5. 1 1/2" Block Styrofoam Insulation
6. Enclosed/Insulated Climate Control Ducting
7. 2" Block Styrofoam Thermal Break Insulation
8. 3/8" Plywood
9. One Piece Headliner

INTERIOR COMFORT AND EXTERIOR PROTECTION

Born of our northern heritage, Triple E's exclusive Climate Guard® system is quite simply the best interior comfort and exterior protection package available in the recreational vehicle industry today.

The Climate Guard® system has been developed with today's motorhome enthusiast in mind. It provides year round climate controlled comfort for passengers as well as built in protection for the motorhome itself, ensuring years of trouble free operation and enjoyment.

INTERIOR COMFORT

- Dometic® roof air conditioners, ducted front to rear, control the temperature throughout the coach.
- High output chassis air conditioner provides travelling comfort.
- Electronic ignition furnace designed to maintain requested interior temperatures through extreme exterior temperatures.
- High output chassis heater for quick windshield defrost.
- A rear auxiliary automotive heater - complete with electric valve - makes travel comfortable while heating the fresh water and holding tank compartments.
- Vacuum bonded, aluminium framed, insulated sidewall and roof construction provides high strength and maintained warmth throughout the coach.
- Coach windows are designed with a dual pane construction - impeding the transfer of cold to make the interior of the window warmer and less subject to condensation.
- Optional insulated vent covers provide superior insulation for the fantastic fans and roof vents.

EXTERIOR PROTECTION

- Scratch and hail resistant gel coat fibreglass sidewalls with all weather exterior finish are easy to maintain and will not rust, pit, or fade.
- A domed, seamless, insulated, one piece EPDM rubber roof promotes quick water run off and reduces the noise of outside elements.
- Urethane undercoating protects against dust and moisture and reduces stone and road noise.
- Steel enclosed, fibreglass insulated and heated fresh water and holding tanks assure extreme cold climate performance for your plumbing system. Tanks are heated from two different sources: the motorhome's ducted furnace while parked and the rear auxiliary heater when travelling.
- Winterization system complete with potable antifreeze pickup kit allows you to easily drain tanks and fill water lines with potable antifreeze.
- Steel, insulated, and sealed firewall protects the driver and passengers from the outside elements.
- Additional 1/2" thermal break insulation beyond the standard 1" Styrofoam block insulation separates the climate controlled interior from the outside elements.

TRIPLE E QUALITY



Unparalleled craftsmanship



Triple E is located in the centre of Canada – in one of the most extreme climates in North America. Customers can thus be confident that our

products have truly been put to the test when it comes to the elements.

Much of what you see in our products is built on site to our highest standards. In our plant you'll find an impressive, progressive production facility complete with welding shop, paint shop, fibreglass and mold shop, sewing department, and cabinet manufacturing department.



Structural integrity and durability are critical in every unit we produce – to the smallest of details. For example, cabinetry is constructed with screws rather than staples. It's the little things that make a big difference.



All Triple E products are built to CSA (Canadian Standards Association) or

RVIA (Recreational Vehicle Industry Association) Standards. Triple E was one of the first RV manufacturers to obtain the ISO 9002 certification – your assurance of the careful construction and high quality materials that are part and parcel of every Triple E unit.

Triple E is proud to offer a

2 YEAR LIMITED WARRANTY

on structure as well as most major components. Please see your dealer for further details.



This combination of labels assures the purchaser that the manufacturer has met or surpassed CSA-CRVA-RVIA standards covering electrical services, gas services, plumbing services, and vehicular safety.

Commander Motorhomes exceed 96 inches in width. In some states, 96 inches is the maximum width of vehicles travelling some or all state roads. It is the responsibility of the owner to be familiar with the road usage laws of the states in which you travel.

COACH NET

Triple E is a proud partner of Coach Net, an extensive support program providing complete and fully paid roadside assistance, emergency road service, and special warranty support benefits that follow you throughout Canada and the US. Service is free for the first year of ownership and available at a nominal fee for subsequent years.

Coach Net's 24-hour Customer Care includes:

- Emergency roadside assistance - including tow vehicle
- Toll free technician hotline for operation and service support
- Toll free nationwide service appointment assistance
- Free custom trip routing and colour maps
- Warranty service at over 6,800 locations throughout North America
- Benefits such as free jump starts, tire changes, fuel delivery, and lock out service

Brochure pictures may be shown with optional equipment.

Full of possibilities. Full of life. View the entire family of Triple E products at www.tripleerv.com.



P.O. Box 1230, Winkler, MB
Canada R6W 4C4
Tel: (204) 325-4361
Fax: (204) 325-5241
www.tripleerv.com

TAKE FREEDOM Further



Commander

COMMANDER 2004



TAKE FREEDOM Further



RECREATIONAL VEHICLES

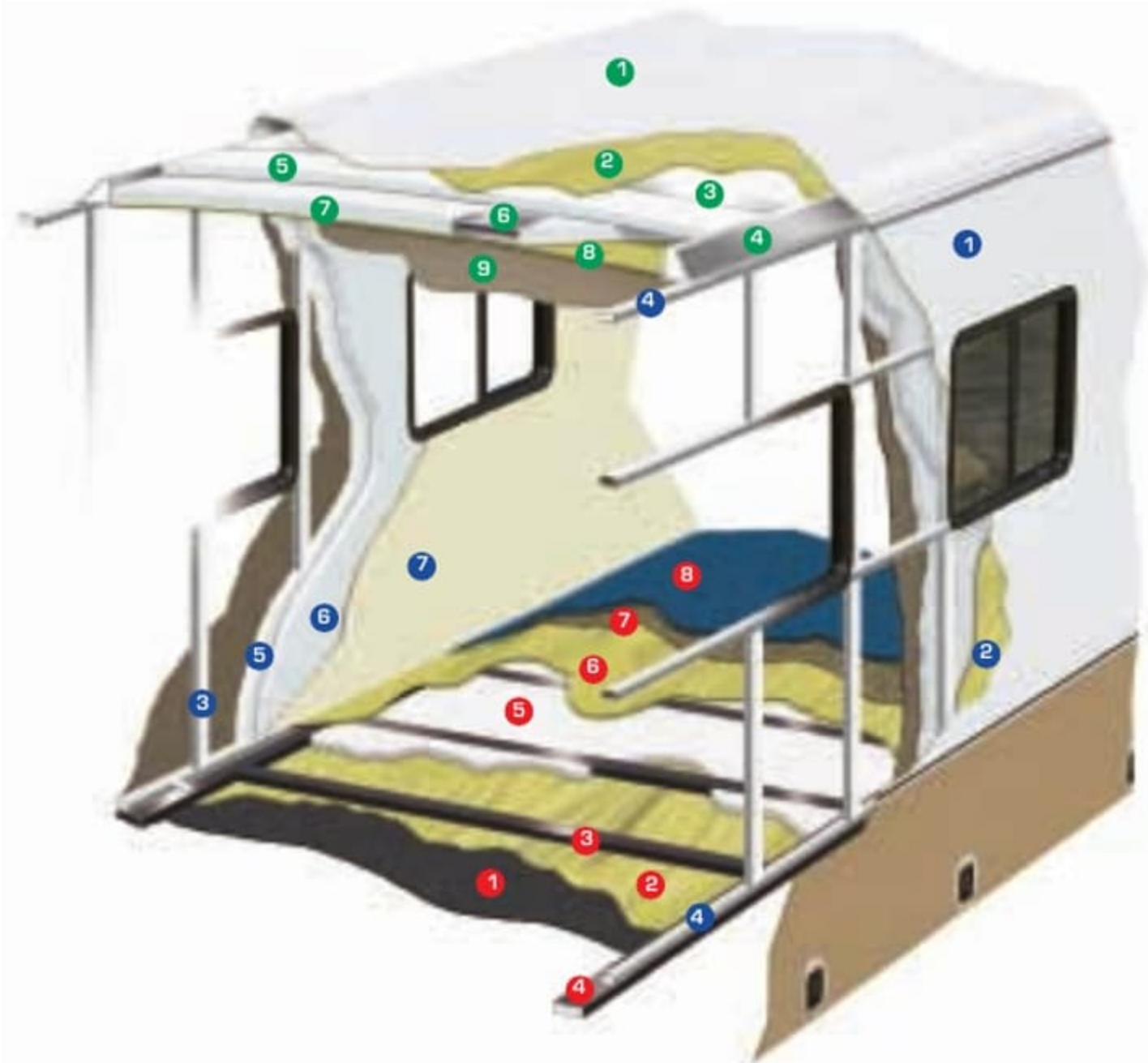


Visit Triple E online at www.tripleerv.com.



CONSTRUCTION

The major considerations in building a top quality motorhome are long lasting beauty coupled with the ability to stand up to any weather conditions. The coach is an aluminium and steel framed structure with vacuum bonded gel coat fibreglass sidewalls and a domed roof finished with a seamless EPDM membrane.



Floor [Exterior to Interior]

1. One Piece Woven Poly-Propylene Underbelly
2. 3/8" Plywood
3. Tubular Steel Framing (Welded)
4. Styrofoam Filled Wall Support Plates
5. 1" Block Styrofoam Insulation
6. 1/2" Plywood
7. Carpet Underlay
8. Carpeting (Floor covering)

Sidewalls [Exterior to Interior]

1. Seamless Fibreglass Exterior
2. Luau Structural Backer
3. Aluminium Framing (Welded)
4. Styrofoam Filled Floor and Roof Plate
5. 1" Block Styrofoam Insulation
6. 1/2" Styrofoam Thermal Break Insulation
7. Interior Decorative Luau Wall Panels

Roof [Exterior to Interior]

1. One Piece EPDM Roofing
2. Luau Backer
3. Aluminium Roof Truss
4. Styrofoam Filled Roof Truss Supports
5. 1 1/2" Block Styrofoam Insulation
6. Enclosed/Insulated Climate Control Ducting
7. 2" Block Styrofoam Thermal Break Insulation
8. 3/8" Plywood
9. One Piece Headliner

INTERIOR COMFORT AND EXTERIOR PROTECTION

Born of our northern heritage, Triple E's exclusive Climate Guard® system is quite simply the best interior comfort and exterior protection package available in the recreational vehicle industry today.

The Climate Guard® system has been developed with today's motorhome enthusiast in mind. It provides year round climate controlled comfort for passengers as well as built in protection for the motorhome itself, ensuring years of trouble free operation and enjoyment.

INTERIOR COMFORT

- Dometic® roof air conditioners, ducted front to rear, control the temperature throughout the coach.
- High output chassis air conditioner provides travelling comfort.
- Electronic ignition furnace designed to maintain requested interior temperatures through extreme exterior temperatures.
- High output chassis heater for quick windshield defrost.
- A rear auxiliary automotive heater - complete with electric valve - makes travel comfortable while heating the fresh water and holding tank compartments.
- Vacuum bonded, aluminium framed, insulated sidewall and roof construction provides high strength and maintained warmth throughout the coach.
- Coach windows are designed with a dual pane construction - impeding the transfer of cold to make the interior of the window warmer and less subject to condensation.
- Optional insulated vent covers provide superior insulation for the fantastic fans and roof vents.

EXTERIOR PROTECTION

- Scratch and hail resistant gel coat fibreglass sidewalls with all weather exterior finish are easy to maintain and will not rust, pit, or fade.
- A domed, seamless, insulated, one piece EPDM rubber roof promotes quick water run off and reduces the noise of outside elements.
- Urethane undercoating protects against dust and moisture and reduces stone and road noise.
- Steel enclosed, fibreglass insulated and heated fresh water and holding tanks assure extreme cold climate performance for your plumbing system. Tanks are heated from two different sources: the motorhome's ducted furnace while parked and the rear auxiliary heater when travelling.
- Winterization system complete with potable antifreeze pickup kit allows you to easily drain tanks and fill water lines with potable antifreeze.
- Steel, insulated, and sealed firewall protects the driver and passengers from the outside elements.
- Additional 1/2" thermal break insulation beyond the standard 1" Styrofoam block insulation separates the climate controlled interior from the outside elements.



Visit Triple E online at www.tripleerv.com.

TRIPLE E QUALITY



Unparalleled craftsmanship



Triple E is located in the centre of Canada – in one of the most extreme climates in North America. Customers can thus be confident that our

products have truly been put to the test when it comes to the elements.

Much of what you see in our products is built on site to our highest standards. In our plant you'll find an impressive, progressive production facility complete with welding shop, paint shop, fibreglass and mold shop, sewing department, and cabinet manufacturing department.



Structural integrity and durability are critical in every unit we produce – to the smallest of details. For example, cabinetry is constructed with screws rather than staples. It's the little things that make a big difference.



All Triple E products are built to CSA (Canadian Standards Association) or

RVIA (Recreational Vehicle Industry Association) Standards. Triple E was one of the first RV manufacturers to obtain the ISO 9002 certification – your assurance of the careful construction and high quality materials that are part and parcel of every Triple E unit.

Triple E is proud to offer a **2 YEAR LIMITED WARRANTY** on structure as well as most major components. Please see your dealer for further details.



This combination of labels assures the purchaser that the manufacturer has met or surpassed CSA-CRVA-RVIA standards covering electrical services, gas services, plumbing services, and vehicular safety.

Commander Motorhomes exceed 96 inches in width. In some states, 96 inches is the maximum width of vehicles travelling some or all state roads. It is the responsibility of the owner to be familiar with the road usage laws of the states in which you travel.

COACH NET

Triple E is a proud partner of Coach Net, an extensive support program providing complete and fully paid roadside assistance, emergency road service, and special warranty support benefits that follow you throughout Canada and the US. Service is free for the first year of ownership and available at a nominal fee for subsequent years.

- Coach Net's 24-hour Customer Care includes:
- Emergency roadside assistance - including tow vehicle
 - Toll free technician hotline for operation and service support
 - Toll free nationwide service appointment assistance
 - Free custom trip routing and colour maps
 - Warranty service at over 6,800 locations throughout North America
 - Benefits such as free jump starts, tire changes, fuel delivery, and lock out service

Brochure pictures may be shown with optional equipment.

Full of possibilities. Full of life. View the entire family of Triple E products at www.tripleerv.com.



RECREATIONAL VEHICLES

P.O. Box 1230, Winkler, MB
Canada R6W 4C4
Tel: (204) 325-4361
Fax: (204) 325-5241
www.tripleerv.com

TAKE FREEDOM Further

Commander



COMMANDER 2004



TAKE FREEDOM Further



RECREATIONAL VEHICLES



CONSTRUCTION

The major considerations in building a top quality motorhome are long lasting beauty coupled with the ability to stand up to any weather conditions. The coach is an aluminium and steel framed structure with vacuum bonded gel coat fibreglass sidewalls and a domed roof finished with a seamless EPDM membrane.



Floor [Exterior to Interior]

1. One Piece Woven Poly-Propylene Underbelly
2. 3/8" Plywood
3. Tubular Steel Framing (Welded)
4. Styrofoam Filled Wall Support Plates
5. 1" Block Styrofoam Insulation
6. 1/2" Plywood
7. Carpet Underlay
8. Carpeting (Floor covering)

Sidewalls [Exterior to Interior]

1. Seamless Fibreglass Exterior
2. Luaun Structural Backer
3. Aluminium Framing (Welded)
4. Styrofoam Filled Floor and Roof Plate
5. 1" Block Styrofoam Insulation
6. 1/2" Styrofoam Thermal Break Insulation
7. Interior Decorative Luaun Wall Panels

Roof [Exterior to Interior]

1. One Piece EPDM Roofing
2. Luaun Backer
3. Aluminium Roof Truss
4. Styrofoam Filled Roof Truss Supports
5. 1 1/2" Block Styrofoam Insulation
6. Enclosed/Insulated Climate Control Ducting
7. 2" Block Styrofoam Thermal Break Insulation
8. 3/8" Plywood
9. One Piece Headliner

INTERIOR COMFORT AND EXTERIOR PROTECTION

Born of our northern heritage, Triple E's exclusive Climate Guard® system is quite simply the best interior comfort and exterior protection package available in the recreational vehicle industry today.

The Climate Guard® system has been developed with today's motorhome enthusiast in mind. It provides year round climate controlled comfort for passengers as well as built in protection for the motorhome itself, ensuring years of trouble free operation and enjoyment.

INTERIOR COMFORT

- Dometic® roof air conditioners, ducted front to rear, control the temperature throughout the coach.
- High output chassis air conditioner provides travelling comfort.
- Electronic ignition furnace designed to maintain requested interior temperatures through extreme exterior temperatures.
- High output chassis heater for quick windshield defrost.
- A rear auxiliary automotive heater - complete with electric valve - makes travel comfortable while heating the fresh water and holding tank compartments.
- Vacuum bonded, aluminium framed, insulated sidewall and roof construction provides high strength and maintained warmth throughout the coach.
- Coach windows are designed with a dual pane construction - impeding the transfer of cold to make the interior of the window warmer and less subject to condensation.
- Optional insulated vent covers provide superior insulation for the fantastic fans and roof vents.

EXTERIOR PROTECTION

- Scratch and hail resistant gel coat fibreglass sidewalls with all weather exterior finish are easy to maintain and will not rust, pit, or fade.
- A domed, seamless, insulated, one piece EPDM rubber roof promotes quick water run off and reduces the noise of outside elements.
- Urethane undercoating protects against dust and moisture and reduces stone and road noise.
- Steel enclosed, fibreglass insulated and heated fresh water and holding tanks assure extreme cold climate performance for your plumbing system. Tanks are heated from two different sources: the motorhome's ducted furnace while parked and the rear auxiliary heater when travelling.
- Winterization system complete with potable antifreeze pickup kit allows you to easily drain tanks and fill water lines with potable antifreeze.
- Steel, insulated, and sealed firewall protects the driver and passengers from the outside elements.
- Additional 1/2" thermal break insulation beyond the standard 1" Styrofoam block insulation separates the climate controlled interior from the outside elements.

TRIPLE E QUALITY



Unparalleled craftsmanship



Triple E is located in the centre of Canada – in one of the most extreme climates in North America. Customers can thus be confident that our

products have truly been put to the test when it comes to the elements.

Much of what you see in our products is built on site to our highest standards. In our plant you'll find an impressive, progressive production facility complete with welding shop, paint shop, fibreglass and mold shop, sewing department, and cabinet manufacturing department.



Structural integrity and durability are critical in every unit we produce – to the smallest of details. For example, cabinetry is constructed with screws rather than staples. It's the little things that make a big difference.



All Triple E products are built to CSA (Canadian Standards Association) or

RVIA (Recreational Vehicle Industry Association) Standards. Triple E was one of the first RV manufacturers to obtain the ISO 9002 certification – your assurance of the careful construction and high quality materials that are part and parcel of every Triple E unit.

Triple E is proud to offer a

2 YEAR LIMITED WARRANTY

on structure as well as most major components. Please see your dealer for further details.



This combination of labels assures the purchaser that the manufacturer has met or surpassed CSA-CRVA-RVIA standards covering electrical services, gas services, plumbing services, and vehicular safety.

Commander Motorhomes exceed 96 inches in width. In some states, 96 inches is the maximum width of vehicles travelling some or all state roads. It is the responsibility of the owner to be familiar with the road usage laws of the states in which you travel.

COACH NET

Triple E is a proud partner of Coach Net, an extensive support program providing complete and fully paid roadside assistance, emergency road service, and special warranty support benefits that follow you throughout Canada and the US. Service is free for the first year of ownership and available at a nominal fee for subsequent years.

Coach Net's 24-hour Customer Care includes:

- Emergency roadside assistance - including tow vehicle
- Toll free technician hotline for operation and service support
- Toll free nationwide service appointment assistance
- Free custom trip routing and colour maps
- Warranty service at over 6,800 locations throughout North America
- Benefits such as free jump starts, tire changes, fuel delivery, and lock out service

Brochure pictures may be shown with optional equipment.

Full of possibilities. Full of life. View the entire family of Triple E products at www.tripleerv.com.



P.O. Box 1230, Winkler, MB
Canada R6W 4C4
Tel: (204) 325-4361
Fax: (204) 325-5241
www.tripleerv.com

TAKE FREEDOM Further



Commander

COMMANDER 2004



TAKE FREEDOM Further



RECREATIONAL VEHICLES

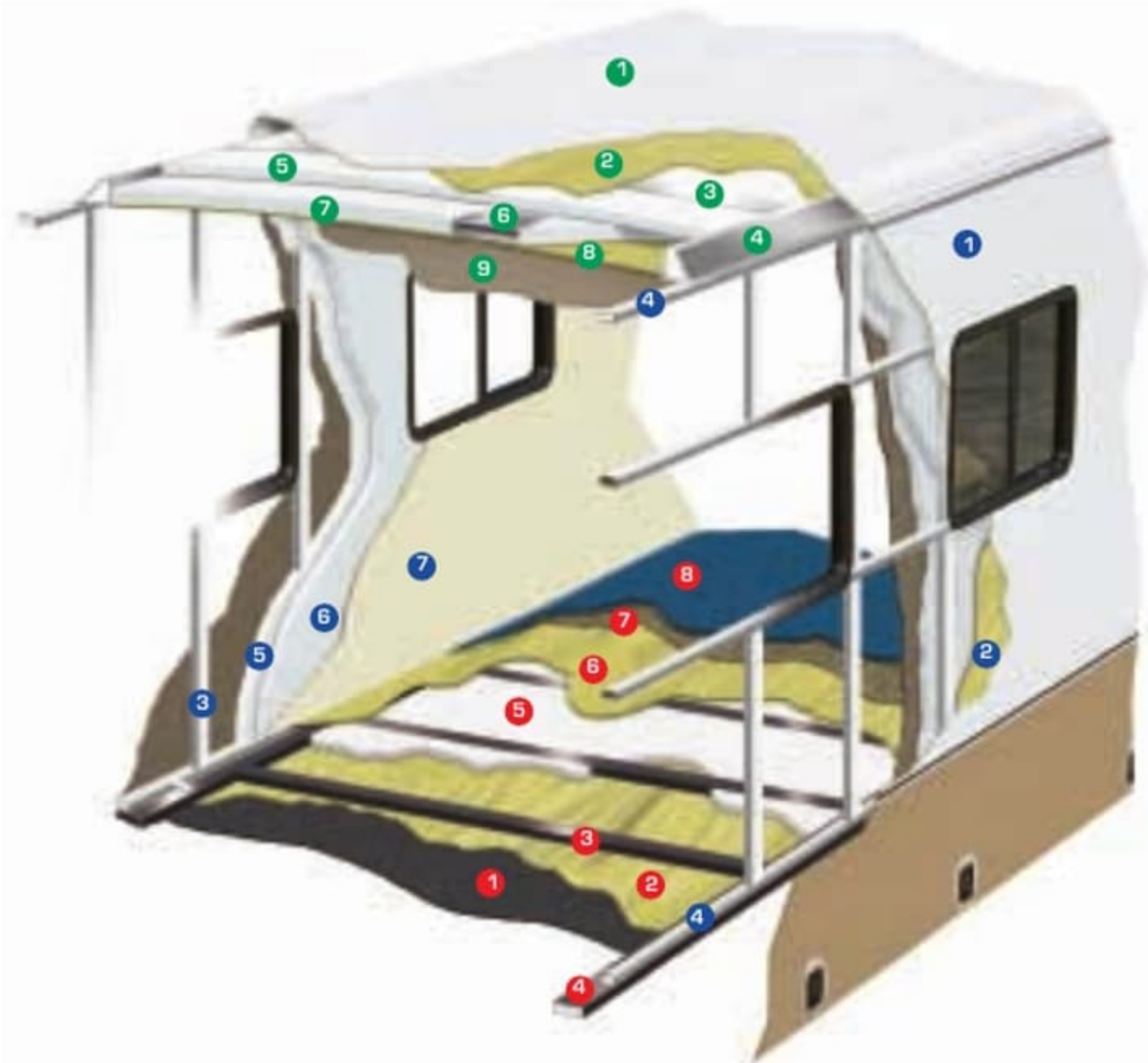


Visit Triple E online at www.tripleerv.com.



CONSTRUCTION

The major considerations in building a top quality motorhome are long lasting beauty coupled with the ability to stand up to any weather conditions. The coach is an aluminium and steel framed structure with vacuum bonded gel coat fibreglass sidewalls and a domed roof finished with a seamless EPDM membrane.



Floor [Exterior to Interior]

1. One Piece Woven Poly-Propylene Underbelly
2. 3/8" Plywood
3. Tubular Steel Framing (Welded)
4. Styrofoam Filled Wall Support Plates
5. 1" Block Styrofoam Insulation
6. 1/2" Plywood
7. Carpet Underlay
8. Carpeting (Floor covering)

Sidewalls [Exterior to Interior]

1. Seamless Fibreglass Exterior
2. Luau Structural Backer
3. Aluminium Framing (Welded)
4. Styrofoam Filled Floor and Roof Plate
5. 1" Block Styrofoam Insulation
6. 1/2" Styrofoam Thermal Break Insulation
7. Interior Decorative Luau Wall Panels

Roof [Exterior to Interior]

1. One Piece EPDM Roofing
2. Luau Backer
3. Aluminium Roof Truss
4. Styrofoam Filled Roof Truss Supports
5. 1 1/2" Block Styrofoam Insulation
6. Enclosed/Insulated Climate Control Ducting
7. 2" Block Styrofoam Thermal Break Insulation
8. 3/8" Plywood
9. One Piece Headliner

INTERIOR COMFORT AND EXTERIOR PROTECTION

Born of our northern heritage, Triple E's exclusive Climate Guard® system is quite simply the best interior comfort and exterior protection package available in the recreational vehicle industry today.

The Climate Guard® system has been developed with today's motorhome enthusiast in mind. It provides year round climate controlled comfort for passengers as well as built in protection for the motorhome itself, ensuring years of trouble free operation and enjoyment.

INTERIOR COMFORT

- Dometic® roof air conditioners, ducted front to rear, control the temperature throughout the coach.
- High output chassis air conditioner provides travelling comfort.
- Electronic ignition furnace designed to maintain requested interior temperatures through extreme exterior temperatures.
- High output chassis heater for quick windshield defrost.
- A rear auxiliary automotive heater - complete with electric valve - makes travel comfortable while heating the fresh water and holding tank compartments.
- Vacuum bonded, aluminium framed, insulated sidewall and roof construction provides high strength and maintained warmth throughout the coach.
- Coach windows are designed with a dual pane construction - impeding the transfer of cold to make the interior of the window warmer and less subject to condensation.
- Optional insulated vent covers provide superior insulation for the fantastic fans and roof vents.

EXTERIOR PROTECTION

- Scratch and hail resistant gel coat fibreglass sidewalls with all weather exterior finish are easy to maintain and will not rust, pit, or fade.
- A domed, seamless, insulated, one piece EPDM rubber roof promotes quick water run off and reduces the noise of outside elements.
- Urethane undercoating protects against dust and moisture and reduces stone and road noise.
- Steel enclosed, fibreglass insulated and heated fresh water and holding tanks assure extreme cold climate performance for your plumbing system. Tanks are heated from two different sources: the motorhome's ducted furnace while parked and the rear auxiliary heater when travelling.
- Winterization system complete with potable antifreeze pickup kit allows you to easily drain tanks and fill water lines with potable antifreeze.
- Steel, insulated, and sealed firewall protects the driver and passengers from the outside elements.
- Additional 1/2" thermal break insulation beyond the standard 1" Styrofoam block insulation separates the climate controlled interior from the outside elements.

TRIPLE E QUALITY



Unparalleled craftsmanship



Triple E is located in the centre of Canada – in one of the most extreme climates in North America. Customers can thus be confident that our

products have truly been put to the test when it comes to the elements.

Much of what you see in our products is built on site to our highest standards. In our plant you'll find an impressive, progressive production facility complete with welding shop, paint shop, fibreglass and mold shop, sewing department, and cabinet manufacturing department.



Structural integrity and durability are critical in every unit we produce – to the smallest of details. For example, cabinetry is constructed with screws rather than staples. It's the little things that make a big difference.



All Triple E products are built to CSA (Canadian Standards Association) or

RVIA (Recreational Vehicle Industry Association) Standards. Triple E was one of the first RV manufacturers to obtain the ISO 9002 certification – your assurance of the careful construction and high quality materials that are part and parcel of every Triple E unit.

Triple E is proud to offer a **2 YEAR LIMITED WARRANTY** on structure as well as most major components. Please see your dealer for further details.



This combination of labels assures the purchaser that the manufacturer has met or surpassed CSA-CRVA-RVIA standards covering electrical services, gas services, plumbing services, and vehicular safety.

Commander Motorhomes exceed 96 inches in width. In some states, 96 inches is the maximum width of vehicles travelling some or all state roads. It is the responsibility of the owner to be familiar with the road usage laws of the states in which you travel.

COACH NET

Triple E is a proud partner of Coach Net, an extensive support program providing complete and fully paid roadside assistance, emergency road service, and special warranty support benefits that follow you throughout Canada and the US. Service is free for the first year of ownership and available at a nominal fee for subsequent years.

Coach Net's 24-hour Customer Care includes:

- Emergency roadside assistance - including tow vehicle
- Toll free technician hotline for operation and service support
- Toll free nationwide service appointment assistance
- Free custom trip routing and colour maps
- Warranty service at over 6,800 locations throughout North America
- Benefits such as free jump starts, tire changes, fuel delivery, and lock out service

Brochure pictures may be shown with optional equipment.

Full of possibilities. Full of life. View the entire family of Triple E products at www.tripleerv.com.



P.O. Box 1230, Winkler, MB
Canada R6W 4C4
Tel: (204) 325-4361
Fax: (204) 325-5241
www.tripleerv.com

TAKE FREEDOM Further



Commander

COMMANDER 2004



TAKE FREEDOM Further



Visit Triple E online at www.tripleerv.com.