

Regency



REGENCY 2004

TAKE FREEDOM *Further*



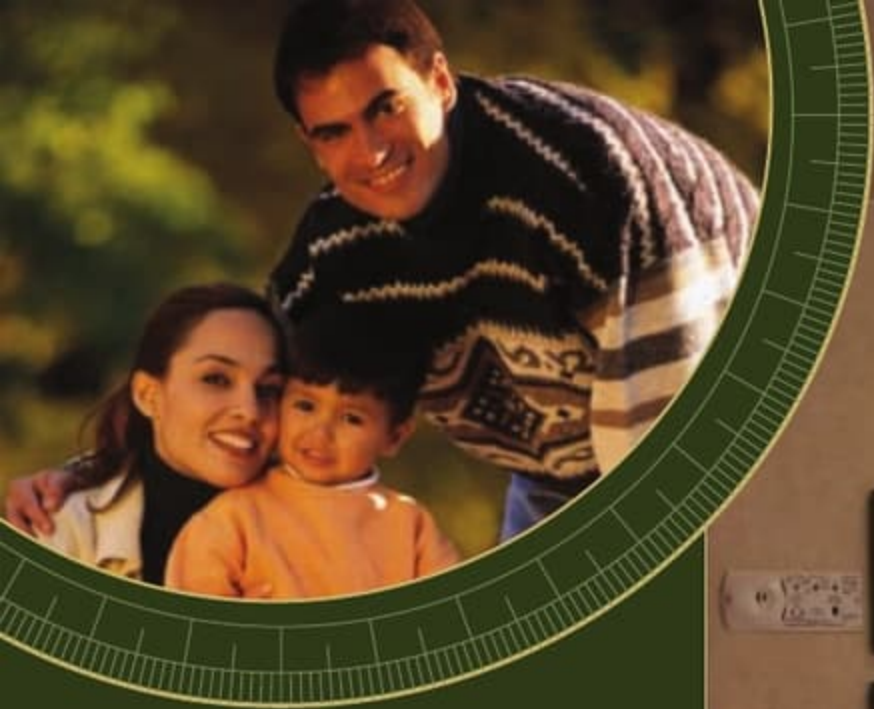
Regency

REGENCY 2004



TAKE FREEDOM *Further*



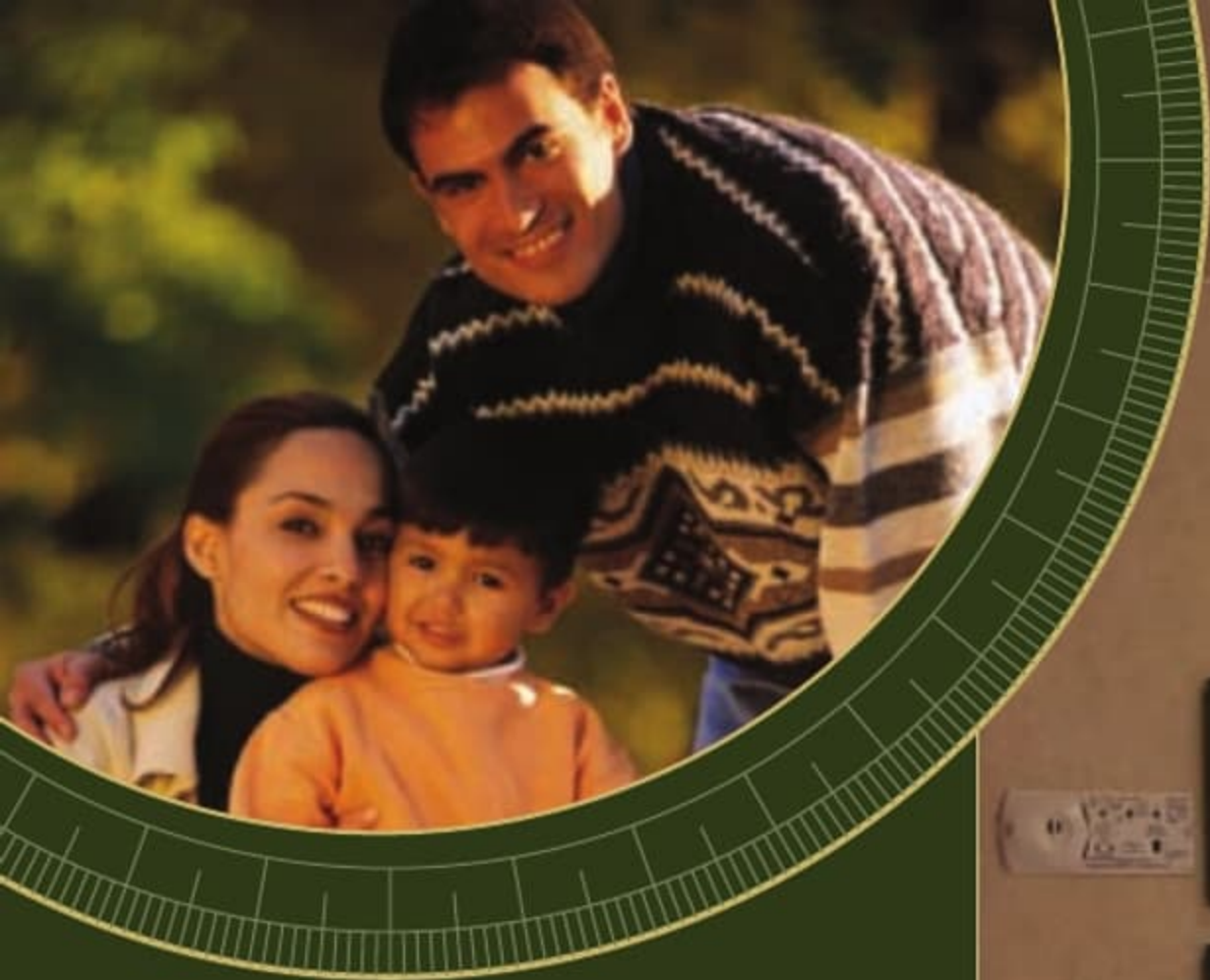


COME HOME TO FREEDOM

Explore ancient caves. Fish the
afternoon away. Build a grand
sandcastle. Whatever you do,
home will be waiting.



C30G shown with Lapis Blue Décor >>



COME HOME TO FREEDOM

Explore ancient caves. Fish the
afternoon away. Build a grand
sandcastle. Whatever you do,
home will be waiting.



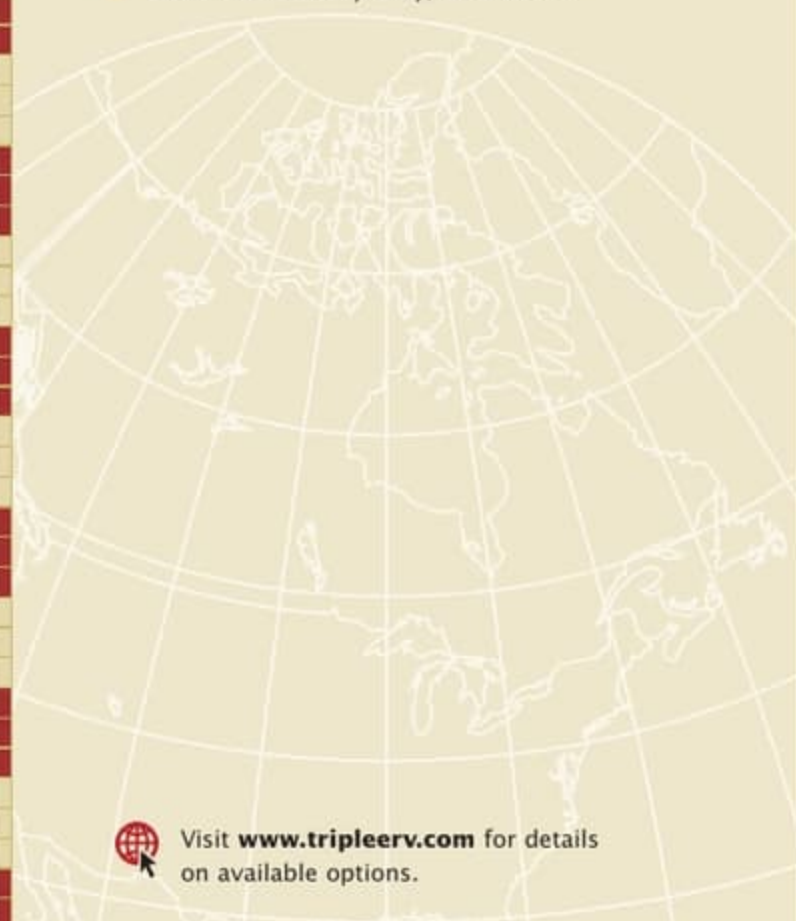
C30G shown with Lapis Blue Décor >>

Endless Appeal

Versatile and easy to drive, with the Regency, the journey is the destination. Known for its good looks, great value, and peppy spirit, this motorhome is truly a family favourite.

With new standard features for 2004 including air conditioning and a microwave, the Regency is a better value than ever before. Consider opting for the XL package to extend the RV season from early spring to late fall with:

- Enclosed, insulated, and heated holding tanks
- Thermal pane windows
- Rear auxiliary heater
- Fabric headliner
- Light package in baggage compartments
- Slide-out battery tray, and more!



Visit www.tripleerv.com for details on available options.



1 The roomy dinette easily and quickly converts to a cozy sleeping area.

2 The galley is equipped with plenty of counter space so you'll have the room you need – no matter what's on the menu.

3 The space saving pantry displays and stores dry goods for quick access. (Available on select models)

Endless Appeal

Versatile and easy to drive, with the Regency, the journey is the destination. Known for its good looks, great value, and peppy spirit, this motorhome is truly a family favourite.

With new standard features for 2004 including air conditioning and a microwave, the Regency is a better value than ever before. Consider opting for the XL package to extend the RV season from early spring to late fall with:

- Enclosed, insulated, and heated holding tanks
- Thermal pane windows
- Rear auxiliary heater
- Fabric headliner
- Light package in baggage compartments
- Slide-out battery tray, and more!



Visit www.tripleerv.com for details on available options.



1 The roomy dinette easily and quickly converts to a cozy sleeping area.

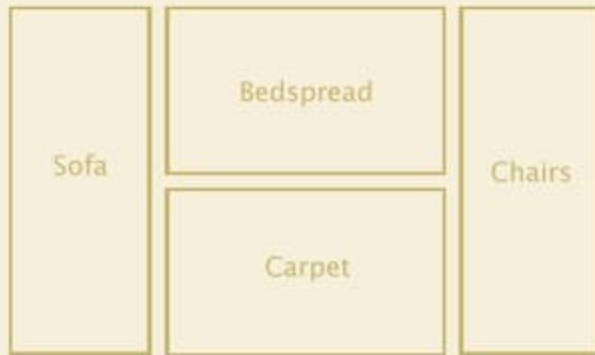
2 The galley is equipped with plenty of counter space so you'll have the room you need – no matter what's on the menu.

3 The space saving pantry displays and stores dry goods for quick access. (Available on select models)

GOOD LOOKS



The Regency is equipped with Filon Filoplated smooth exterior sidewalls. Extremely dent and weather resistant, these panels will keep your motorhome looking its best for years to come.



You are able to customize your motorhome with one of four distinct interior design schemes. Developed by a group of professionals, our combinations skillfully coordinate upholstery, carpeting, window treatments, and exterior graphics in a manner that is both especially pleasing to the eye and of uncompromising quality.

Visit www.tripleerv.com for more information on the Regency's features.



Pebble Beach



Enchanted Forest



Lapis Blue



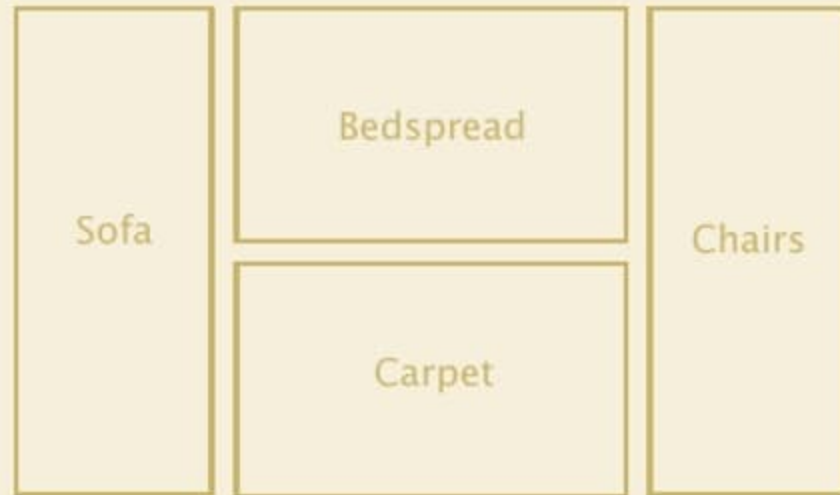
Mulberry Grove

Colours may not be exactly as shown due to the printing process. Please see your dealer for specific colours.

GOOD LOOKS



The Regency is equipped with Filon Filoplated smooth exterior sidewalls. Extremely dent and weather resistant, these panels will keep your motorhome looking its best for years to come.



You are able to customize your motorhome with one of four distinct interior design schemes. Developed by a group of professionals, our combinations skillfully coordinate upholstery, carpeting, window treatments, and exterior graphics in a manner that is both especially pleasing to the eye and of uncompromising quality.

Visit www.tripleerv.com for more information on the Regency's features.



Pebble Beach



Enchanted Forest



Lapis Blue



Mulberry Grove

Colours may not be exactly as shown due to the printing process. Please see your dealer for specific colours.

First Class Features

What is it about the Regency that makes it so accommodating? The combination of top quality appliances, clever storage areas, and spacious living design all contribute to the feeling of completeness!

To further enhance your time away from home, consider the following options to personalize your Regency to suit your needs:

- 4.0 KW Onan generator
- Roof rack and ladder
- Exterior shower
- In-shower skylight



- 1 *With a residential spring coil quality mattress and relaxing décor, you'll sleep well in the private master bedroom.*
- 2 *New for 2004 is a classic TV cabinet to keep electronics safely stored when not in use.*
- 3 *Making the best use of space, the Regency can sleep up to six.*
- 4 *Raised solid oak cabinet doors enhance the rich oak finish cabinetry.*
- 5 *Bring it with you! Exterior baggage compartments are surprisingly large and easy to access.*

Visit www.tripleerv.com for more photos of the Regency.

First Class Features

What is it about the Regency that makes it so accommodating? The combination of top quality appliances, clever storage areas, and spacious living design all contribute to the feeling of completeness!

To further enhance your time away from home, consider the following options to personalize your Regency to suit your needs:

- 4.0 KW Onan generator
- Roof rack and ladder
- Exterior shower
- In-shower skylight



- 1 With a residential spring coil quality mattress and relaxing décor, you'll sleep well in the private master bedroom.
- 2 New for 2004 is a classic TV cabinet to keep electronics safely stored when not in use.
- 3 Making the best use of space, the Regency can sleep up to six.
- 4 Raised solid oak cabinet doors enhance the rich oak finish cabinetry.
- 5 Bring it with you! Exterior baggage compartments are surprisingly large and easy to access.

Visit www.tripleerv.com for more photos of the Regency.

STANDARDS AND OPTIONS

S = Standard O = Option **New** = New for 2004

| | C22 | C24 | C28 | C30G | | C22 | C24 | C28 | C30G |
|--|-----|-----|-----|------|---|-----|-----|-----|------|
| VEHICULAR | | | | | | | | | |
| Air Conditioning - Chassis | S | S | S | S | Chairs - 2 Swivel Cocktail Chairs with Oak Flip Table | - | - | S | - |
| Block Heater | S | S | S | S | Mattress - Innerspring 60" x 74" | - | - | S | S |
| Chassis - Ford 11,500 GVW, E-350, 6.8 L EFI V-10 Triton | S | - | - | - | Mattress - Innerspring 54" x 74" | S | S | - | - |
| Chassis - Ford 14,050 GVW, E-450, 6.8 L EFI V-10 Triton | - | S | S | S | New Pillows - Coordinated Pillows for Living Area | O | O | O | O |
| New Chassis - Ford 14,050 GVW, E-450, 6.0 L Power Stroke Diesel | - | O | O | - | Sofa - 62" with Flip-up Seat Storage | - | - | - | S |
| Cover - Continental Cover for Spare Tire (included in XL option) | O | O | - | - | New Sofa - Jackknife 66" with Flip-up Seat Storage in lieu of Cocktail Chairs & Flip Table | - | - | O | - |
| Cruise Control and Tilt Steering Wheel | S | S | S | S | GALLEY | | | | |
| Hitch - Trailer Hitch Receiver with Wiring - 350/3,500 lb | S | S | S | S | New Bi-Fold Range Cover | S | S | S | S |
| Interior Rearview Mirror | S | S | S | S | Cook Top - 3-Burner Range/Oven with High Output Burner | S | S | S | S |
| Light - High Mounted Rear Stop Light - LED Long Life | S | S | S | S | Convection Microwave - OTR with Light & 110 V Vent Fan with Cook Top and Drawers | - | - | - | O |
| Mirrors - Automotive-Style Exterior Mirrors | S | S | S | S | Countertop - Radius Solid Oak Trim on Countertops | S | S | S | S |
| Power Windows and Door Locks | S | S | S | S | New Microwave Oven | S | S | S | - |
| Rear Airbag Assist Suspension | O | O | O | O | Microwave - OTR with Light & Vent Fan | - | - | - | S |
| New Rust Protection | O | O | O | O | Monitor Panel - Grey, Black, Fresh Water & Battery Charge | S | S | S | S |
| Seat - Power Driver's Seat | S | S | S | S | Range Hood - Lighted Power Range Hood | S | S | S | - |
| Spare Tire - Crank Down under Floor Mount | - | - | S | S | Refrigerator - Dometic Double Door LP/Electric 6 cu ft | S | S | S | S |
| Spare Tire and Carrier with Vinyl Cover | S | S | - | - | Sink - Acrylic Deep Bowl with Cutting Board Cover | S | S | S | S |
| Tires - Radial Ply | S | S | S | S | LAVATORY | | | | |
| Transmission - Automatic 4-Speed with Overdrive | S | S | S | S | Fan - Power Bath Vent | S | S | S | S |
| Undercoating - Chassis | S | S | S | S | Hooks - Robe Hooks in Shower | S | S | S | S |
| New Wheel Simulators | S | S | S | S | Skylight - in Shower | O | O | O | O |
| CONSTRUCTION | | | | | Toilet - Foot Flush | S | S | S | S |
| Aluminium-Framed Vacuum Bonded Insulated Wall & Roof Construction | S | S | S | S | ENTERTAINMENT | | | | |
| Floor - Steel-Framed Vacuum Bonded Insulated Floor Construction | S | S | S | S | Entertainment Console - Over Cab with 20" AC TV and Slide-out Single Bed | | | | |
| Roof - One-Piece EPDM Roof | S | S | S | S | (N/A with diesel option) | O | O | O | O |
| Sidewalls - FRP "Filon" Sidewalls | S | S | S | S | Receptacles - Twin 110 V Outlets at Entertainment Cabinet | S | S | S | S |
| Windows - Tinted Radius Cornered Windows | S | S | S | S | Stereo - AM/FM CD In-Dash Stereo with Big Buttons - 80 W | S | S | S | S |
| EXTERIOR | | | | | Stereo - Big Button AM/FM CD Stereo with 6-Stack in Dash CD Changer - 80 W | O | O | O | O |
| Bumper - Rear Bumper c/w Aluminium Bumper Cover (non-XL models) | S | S | S | S | New TV Antenna - Roof Top Retractable Antenna with Booster | S | S | S | S |
| Doors - Exterior Flush Radius-Style Baggage Doors | S | S | S | S | HEATING, VENTILATING AND AIR CONDITIONING | | | | |
| Exterior Shower with Shut-off Valves for Winterizing | O | O | O | O | New Air Conditioner - 13,500 BTU Roof Air Conditioner with Heat Strip | S | S | S | S |
| Ladder - Roof Rack & Ladder | O | O | O | O | Fan - Thermal Controlled Fan (front bunk area) | O | O | O | O |
| Light - Porch Light with Interior Wall Switch | S | S | S | S | Furnace - 31,000 BTU Furnace with in Floor Ducting | S | S | S | S |
| Running Boards - Fibreglass Flares & Running Boards | S | S | S | S | ELECTRICAL | | | | |
| Step - Electric Step (non-XL models only, included in XL option) | O | O | O | O | Battery - Second RV Coach Battery (1 Standard) | O | O | O | O |
| Storage - Pass Through Storage Compartment at Rear | - | - | S | S | Bi-directional Isolator Relay Delay (BIRD) Battery Charging | S | S | S | S |
| Window - Front Bunk Window - Thermal Pane | O | O | O | - | Cable TV Hook-up | S | S | S | S |
| INTERIOR | | | | | Converter - Power Converter with Battery Charger | S | S | S | S |
| Blind - Venetian Blinds in Galley | S | S | S | S | Cord - 25 ft Power Cord | S | S | S | S |
| Cabinet - Storage Cabinets on Sides of Overhead Bunk | S | S | S | S | Generator - 4.0 KW Onan MicroQuiet® | O | O | O | O |
| New Cabinet - TV Cabinet with Tambour Doors | S | S | S | S | New Generator Ready Package | S | S | S | S |
| Cabinets - Oak Finished Cabinet Construction | S | S | S | S | Receptacle - GFI Patio 110 V Receptacle | S | S | S | S |
| Detectors - Electronic Smoke, LP & CO Detectors | S | S | S | S | PLUMBING AND LP SYSTEMS | | | | |
| Doors - Raised Solid Oak Cabinet Doors | S | S | S | S | Black Tank Flush | S | S | S | S |
| Drapes - Privacy Drape - Cab | S | S | S | S | New Pick Up Kit - Antifreeze Pick Up Kit | S | S | S | S |
| Drapes - Privacy Drape - Bedroom | S | S | - | - | Valve - Water Heater Bypass Valve | S | S | S | S |
| Drawers - Dual Roller Glide Drawers with Travel Lock | S | S | S | S | Water Heater - Electronic Ignition LP Water Heater | S | S | S | S |
| Fire Extinguisher - Dry Chemical | S | S | S | S | OPTIONAL AWNING PACKAGES | | | | |
| Flooring - Carpeted Bedroom & Living Areas | - | - | S | S | Awning - A&E 8500 Patio Awning | O | O | O | O |
| Flooring - Vinyl Flooring in Galley | S | S | S | S | Factory PDI | O | O | O | O |
| Handle - Oak Assist Handle at Bunk | S | S | S | S | SPECIAL OPTIONS PACKAGE(S) | | | | |
| Magazine Rack - Oak Magazine Rack on Cab Wall | S | S | S | S | XL PACKAGE INCLUDES: | - | O | O | O |
| Shades - Pleated Shades | S | S | S | S | Continental Tire Cover (C28 & C30G only), Electric Step, Light Package in | | | | |
| Shelf - Bedroom TV Shelf | - | - | O | O | Baggage Compartments, Painted Skirts, Thermal Pane Windows, Fibreglass | | | | |
| FURNITURE | | | | | Front & Rear Mask, Enclosed, Insulated & Heated Holding Tanks, Rear Auxiliary | | | | |
| Bed - Twin Beds | - | - | O | O | Heater, Slide-out Battery Tray, Fabric Headliner | | | | |
| Booth Dinette - Wall Mount Dinette Table with Steel Framing for Seat Belts | S | S | S | S | | | | | |
| Chair - Swivel Cocktail Chair | - | S | - | - | | | | | |

STANDARDS AND OPTIONS

| | C22 | C24 | C28 | C30G | | C22 | C24 | C28 | C30G |
|---|-----|-----|-----|------|--|-----|-----|-----|------|
| S = Standard O = Option New = New for 2004 | | | | | | | | | |
| VEHICULAR | | | | | | | | | |
| Air Conditioning - Chassis | S | S | S | S | | | | | |
| Block Heater | S | S | S | S | | | | | |
| Chassis - Ford 11,500 GVW, E-350, 6.8 L EFI V-10 Triton | S | - | - | - | | | | | |
| Chassis - Ford 14,050 GVW, E-450, 6.8 L EFI V-10 Triton | | S | S | S | | | | | |
| New Chassis - Ford 14,050 GVW, E-450, 6.0 L Power Stroke Diesel | - | O | O | - | | | | | |
| Cover - Continental Cover for Spare Tire (included in XL option) | O | O | - | - | | | | | |
| Cruise Control and Tilt Steering Wheel | S | S | S | S | | | | | |
| Hitch - Trailer Hitch Receiver with Wiring - 350/3,500 lb | S | S | S | S | | | | | |
| Interior Rearview Mirror | S | S | S | S | | | | | |
| Light - High Mounted Rear Stop Light - LED Long Life | S | S | S | S | | | | | |
| Mirrors - Automotive-Style Exterior Mirrors | S | S | S | S | | | | | |
| Power Windows and Door Locks | S | S | S | S | | | | | |
| Rear Airbag Assist Suspension | O | O | O | O | | | | | |
| New Rust Protection | O | O | O | O | | | | | |
| Seat - Power Driver's Seat | S | S | S | S | | | | | |
| Spare Tire - Crank Down under Floor Mount | - | - | S | S | | | | | |
| Spare Tire and Carrier with Vinyl Cover | S | S | - | - | | | | | |
| Tires - Radial Ply | S | S | S | S | | | | | |
| Transmission - Automatic 4-Speed with Overdrive | S | S | S | S | | | | | |
| Undercoating - Chassis | S | S | S | S | | | | | |
| New Wheel Simulators | S | S | S | S | | | | | |
| CONSTRUCTION | | | | | | | | | |
| Aluminium-Framed Vacuum Bonded Insulated Wall & Roof Construction | S | S | S | S | | | | | |
| Floor - Steel-Framed Vacuum Bonded Insulated Floor Construction | S | S | S | S | | | | | |
| Roof - One-Piece EPDM Roof | S | S | S | S | | | | | |
| Sidewalls - FRP "Filon" Sidewalls | S | S | S | S | | | | | |
| Windows - Tinted Radius Cornered Windows | S | S | S | S | | | | | |
| EXTERIOR | | | | | | | | | |
| Bumper - Rear Bumper c/w Aluminium Bumper Cover (non-XL models) | S | S | S | S | | | | | |
| Doors - Exterior Flush Radius-Style Baggage Doors | S | S | S | S | | | | | |
| Exterior Shower with Shut-off Valves for Winterizing | O | O | O | O | | | | | |
| Ladder - Roof Rack & Ladder | O | O | O | O | | | | | |
| Light - Porch Light with Interior Wall Switch | S | S | S | S | | | | | |
| Running Boards - Fibreglass Flares & Running Boards | S | S | S | S | | | | | |
| Step - Electric Step (non-XL models only, included in XL option) | O | O | O | O | | | | | |
| Storage - Pass Through Storage Compartment at Rear | - | - | S | S | | | | | |
| Window - Front Bunk Window - Thermal Pane | O | O | O | - | | | | | |
| INTERIOR | | | | | | | | | |
| Blind - Venetian Blinds in Galley | S | S | S | S | | | | | |
| Cabinet - Storage Cabinets on Sides of Overhead Bunk | S | S | S | S | | | | | |
| New Cabinet - TV Cabinet with Tambour Doors | S | S | S | S | | | | | |
| Cabinets - Oak Finished Cabinet Construction | S | S | S | S | | | | | |
| Detectors - Electronic Smoke, LP & CO Detectors | S | S | S | S | | | | | |
| Doors - Raised Solid Oak Cabinet Doors | S | S | S | S | | | | | |
| Drapes - Privacy Drape - Cab | S | S | S | S | | | | | |
| Drapes - Privacy Drape - Bedroom | S | S | - | - | | | | | |
| Drawers - Dual Roller Glide Drawers with Travel Lock | S | S | S | S | | | | | |
| Fire Extinguisher - Dry Chemical | S | S | S | S | | | | | |
| Flooring - Carpeted Bedroom & Living Areas | - | - | S | S | | | | | |
| Flooring - Vinyl Flooring in Galley | S | S | S | S | | | | | |
| Handle - Oak Assist Handle at Bunk | S | S | S | S | | | | | |
| Magazine Rack - Oak Magazine Rack on Cab Wall | S | S | S | S | | | | | |
| Shades - Pleated Shades | S | S | S | S | | | | | |
| Shelf - Bedroom TV Shelf | - | - | O | O | | | | | |
| FURNITURE | | | | | | | | | |
| Bed - Twin Beds | - | - | O | O | | | | | |
| Booth Dinette - Wall Mount Dinette Table with Steel Framing for Seat Belts with 5" Laminated Cushions | S | S | S | S | | | | | |
| Chair - Swivel Cocktail Chair | - | S | - | - | | | | | |
| | | | | | | | | | |
| Chairs - 2 Swivel Cocktail Chairs with Oak Flip Table | - | - | S | - | | | | | |
| Mattress - Innerspring 60" x 74" | - | - | S | S | | | | | |
| Mattress - Innerspring 54" x 74" | S | S | - | - | | | | | |
| New Pillows - Coordinated Pillows for Living Area | O | O | O | O | | | | | |
| Sofa - 62" with Flip-up Seat Storage | - | - | - | S | | | | | |
| New Sofa - Jackknife 66" with Flip-up Seat Storage in lieu of Cocktail Chairs & Flip Table | - | - | O | - | | | | | |
| GALLEY | | | | | | | | | |
| New Bi-Fold Range Cover | S | S | S | S | | | | | |
| Cook Top - 3-Burner Range/Oven with High Output Burner | S | S | S | S | | | | | |
| Convection Microwave - OTR with Light & 110 V Vent Fan with Cook Top and Drawers | - | - | - | O | | | | | |
| Countertop - Radius Solid Oak Trim on Countertops | S | S | S | S | | | | | |
| New Microwave Oven | S | S | S | - | | | | | |
| Microwave - OTR with Light & Vent Fan | - | - | - | S | | | | | |
| Monitor Panel - Grey, Black, Fresh Water & Battery Charge | S | S | S | S | | | | | |
| Range Hood - Lighted Power Range Hood | S | S | S | - | | | | | |
| Refrigerator - Dometic Double Door LP/Electric 6 cu ft | S | S | S | S | | | | | |
| Sink - Acrylic Deep Bowl with Cutting Board Cover | S | S | S | S | | | | | |
| LAVATORY | | | | | | | | | |
| Fan - Power Bath Vent | S | S | S | S | | | | | |
| Hooks - Robe Hooks in Shower | S | S | S | S | | | | | |
| Skylight - in Shower | O | O | O | O | | | | | |
| Toilet - Foot Flush | S | S | S | S | | | | | |
| ENTERTAINMENT | | | | | | | | | |
| Entertainment Console - Over Cab with 20" AC TV and Slide-out Single Bed (N/A with diesel option) | O | O | O | O | | | | | |
| Receptacles - Twin 110 V Outlets at Entertainment Cabinet | S | S | S | S | | | | | |
| Stereo - AM/FM CD In-Dash Stereo with Big Buttons - 80 W | S | S | S | S | | | | | |
| Stereo - Big Button AM/FM CD Stereo with 6-Stack in Dash CD Changer - 80 W | O | O | O | O | | | | | |
| New TV Antenna - Roof Top Retractable Antenna with Booster | S | S | S | S | | | | | |
| HEATING, VENTILATING AND AIR CONDITIONING | | | | | | | | | |
| New Air Conditioner - 13,500 BTU Roof Air Conditioner with Heat Strip | S | S | S | S | | | | | |
| Fan - Thermal Controlled Fan (front bunk area) | O | O | O | O | | | | | |
| Furnace - 31,000 BTU Furnace with in Floor Ducting | S | S | S | S | | | | | |
| ELECTRICAL | | | | | | | | | |
| Battery - Second RV Coach Battery (1 Standard) | O | O | O | O | | | | | |
| Bi-directional Isolator Relay Delay (BIRD) Battery Charging | S | S | S | S | | | | | |
| Cable TV Hook-up | S | S | S | S | | | | | |
| Converter - Power Converter with Battery Charger | S | S | S | S | | | | | |
| Cord - 25 ft Power Cord | S | S | S | S | | | | | |
| Generator - 4.0 KW Onan MicroQuiet® | O | O | O | O | | | | | |
| New Generator Ready Package | S | S | S | S | | | | | |
| Receptacle - GFI Patio 110 V Receptacle | S | S | S | S | | | | | |
| PLUMBING AND LP SYSTEMS | | | | | | | | | |
| Black Tank Flush | S | S | S | S | | | | | |
| New Pick Up Kit - Antifreeze Pick Up Kit | S | S | S | S | | | | | |
| Valve - Water Heater Bypass Valve | S | S | S | S | | | | | |
| Water Heater - Electronic Ignition LP Water Heater | S | S | S | S | | | | | |
| OPTIONAL AWNING PACKAGES | | | | | | | | | |
| Awning - A&E 8500 Patio Awning | O | O | O | O | | | | | |
| Factory PDI | O | O | O | O | | | | | |
| SPECIAL OPTIONS PACKAGE(S) | | | | | | | | | |
| XL PACKAGE INCLUDES: | - | O | O | O | | | | | |
| Continental Tire Cover (C28 & C30G only), Electric Step, Light Package in Baggage Compartments, Painted Skirts, Thermal Pane Windows, Fibreglass Front & Rear Mask, Enclosed, Insulated & Heated Holding Tanks, Rear Auxiliary Heater, Slide-out Battery Tray, Fabric Headliner | | | | | | | | | |

SPECIFICATIONS

| REGENCY 2004 | C22 | C24 |
|--------------------------------------|----------------|----------------|
| GVWR - lbs (kg) | 11,500 (5,216) | 14,050 (6,373) |
| UVW - lbs (kg) | 9,167 (4,158) | 9,558 (4,336) |
| NCC - lbs (kg) | 2,333 (1,058) | 4,492 (2,037) |
| Wheelbase - inches (mm) | 158 (4,013) | 158 (4,013) |
| Length (not incl. spare) - feet (mm) | 22'11" (6,985) | 24'3" (7,391) |
| Width - feet (mm) | 8'4" (2,534) | 8'4" (2,534) |
| Height (incl. A/C) - feet (mm) | 10'8" (3,251) | 10'8" (3,251) |
| Water Tank Cap. - gal (l) | 36 (137) | 36 (137) |
| Holding Tank Cap. - gal (l) | 64 (243) | 64 (243) |
| Fuel Capacity - gal (l) | 55 (208) | 55 (208) |
| Propane Capacity - gal (l) | 17.5 (66) | 17.5 (66) |
| Opt. Awning Length - feet (mm) | 10' (3,048) | 11' (3,353) |

| REGENCY 2004 | C28 | C30G |
|--------------------------------------|----------------|----------------|
| GVWR - lbs (kg) | 14,050 (6,373) | 14,050 (6,373) |
| UVW - lbs (kg) | 10,666 (4,838) | 11,328 (5,138) |
| NCC - lbs (kg) | 3,384 (1,535) | 2,722 (1,235) |
| Wheelbase - inches (mm) | 190 (4,826) | 208 (5,283) |
| Length (not incl. spare) - feet (mm) | 28'7" (8,712) | 30'3" (9,220) |
| Width - feet (mm) | 8'4" (2,534) | 8'4" (2,534) |
| Height (incl. A/C) - feet (mm) | 10'8" (3,251) | 10'8" (3,251) |
| Water Tank Cap. - gal (l) | 36 (137) | 36 (137) |
| Holding Tank Cap. - gal (l) | 64 (243) | 64 (243) |
| Fuel Capacity - gal (l) | 55 (208) | 55 (208) |
| Propane Capacity - gal (l) | 17.5 (66) | 17.5 (66) |
| Opt. Awning Length - feet (mm) | 18' (5,486) | 19' (5,791) |

NOTE: All capacities in U.S. gallons

GVWR

GROSS VEHICLE WEIGHT RATING means the maximum permissible weight of this motorhome. The GVWR is equal to or greater than the sum of the unloaded vehicle weight (UVW) plus the net carrying capacity (NCC).

UVW

UNLOADED VEHICLE WEIGHT means the weight of the motorhome as built at the factory with full fuel, engine oil, and coolants. The UVW does not include cargo, fresh water, LP gas, occupants, or factory or dealer installed options or accessories.

NCC

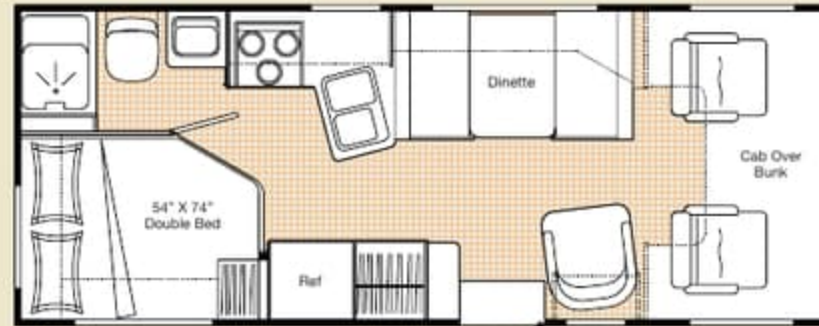
NET CARRYING CAPACITY means the maximum weight of all occupants, including the driver, personal belongings, food, fresh water, LP gas, tools, tongue weight of towed vehicle, factory and dealer installed accessories, etc., that can be carried by this motorhome. NCC is equal to or less than GVWR minus UVW.

NOTE: Please see your dealer for weights of factory installed options.

FLOOR PLANS



C22



C24



C28



C30G



Product improvement is a continuing process at Triple E Recreational Vehicles. Thus, we reserve the right to change specifications on any or all products without prior notice; errors and omissions excepted. Triple E Recreational Vehicles is under no obligation to undertake modification to units manufactured prior to changes on specifications.

SPECIFICATIONS

| REGENCY 2004 | C22 | C24 |
|--------------------------------------|----------------|----------------|
| GVWR - lbs (kg) | 11,500 (5,216) | 14,050 (6,373) |
| UVW - lbs (kg) | 9,167 (4,158) | 9,558 (4,336) |
| NCC - lbs (kg) | 2,333 (1,058) | 4,492 (2,037) |
| Wheelbase - inches (mm) | 158 (4,013) | 158 (4,013) |
| Length (not incl. spare) - feet (mm) | 22'11" (6,985) | 24'3" (7,391) |
| Width - feet (mm) | 8'4" (2,534) | 8'4" (2,534) |
| Height (incl. A/C) - feet (mm) | 10'8" (3,251) | 10'8" (3,251) |
| Water Tank Cap. - gal (l) | 36 (137) | 36 (137) |
| Holding Tank Cap. - gal (l) | 64 (243) | 64 (243) |
| Fuel Capacity - gal (l) | 55 (208) | 55 (208) |
| Propane Capacity - gal (l) | 17.5 (66) | 17.5 (66) |
| Opt. Awning Length - feet (mm) | 10' (3,048) | 11' (3,353) |

| REGENCY 2004 | C28 | C30G |
|--------------------------------------|----------------|----------------|
| GVWR - lbs (kg) | 14,050 (6,373) | 14,050 (6,373) |
| UVW - lbs (kg) | 10,666 (4,838) | 11,328 (5,138) |
| NCC - lbs (kg) | 3,384 (1,535) | 2,722 (1,235) |
| Wheelbase - inches (mm) | 190 (4,826) | 208 (5,283) |
| Length (not incl. spare) - feet (mm) | 28'7" (8,712) | 30'3" (9,220) |
| Width - feet (mm) | 8'4" (2,534) | 8'4" (2,534) |
| Height (incl. A/C) - feet (mm) | 10'8" (3,251) | 10'8" (3,251) |
| Water Tank Cap. - gal (l) | 36 (137) | 36 (137) |
| Holding Tank Cap. - gal (l) | 64 (243) | 64 (243) |
| Fuel Capacity - gal (l) | 55 (208) | 55 (208) |
| Propane Capacity - gal (l) | 17.5 (66) | 17.5 (66) |
| Opt. Awning Length - feet (mm) | 18' (5,486) | 19' (5,791) |

NOTE: All capacities in U.S. gallons

GVWR

GROSS VEHICLE WEIGHT RATING means the maximum permissible weight of this motorhome. The GVWR is equal to or greater than the sum of the unloaded vehicle weight (UVW) plus the net carrying capacity (NCC).

UVW

UNLOADED VEHICLE WEIGHT means the weight of the motorhome as built at the factory with full fuel, engine oil, and coolants. The UVW does not include cargo, fresh water, LP gas, occupants, or factory or dealer installed options or accessories.

NCC

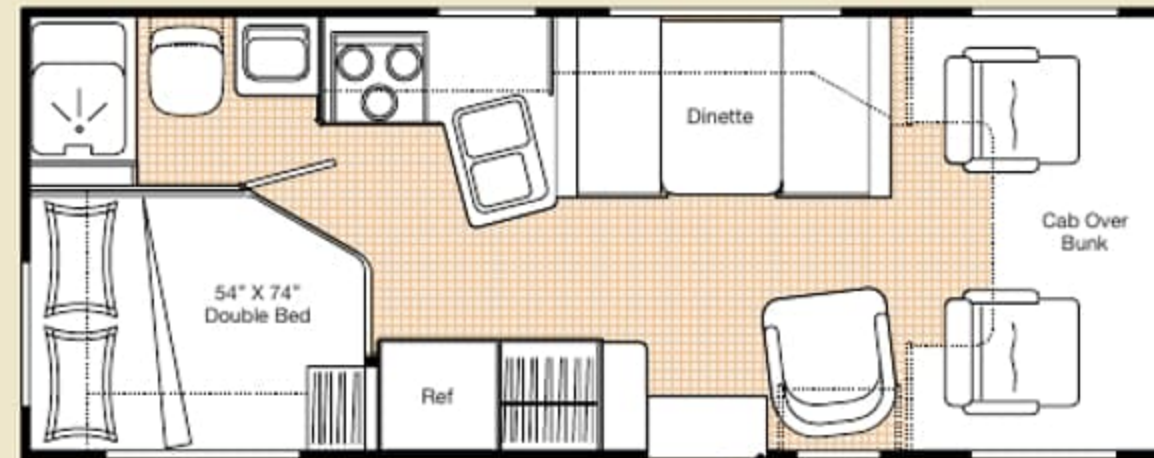
NET CARRYING CAPACITY means the maximum weight of all occupants, including the driver, personal belongings, food, fresh water, LP gas, tools, tongue weight of towed vehicle, factory and dealer installed accessories, etc., that can be carried by this motorhome. NCC is equal to or less than GVWR minus UVW.

NOTE: Please see your dealer for weights of factory installed options.

FLOOR PLANS



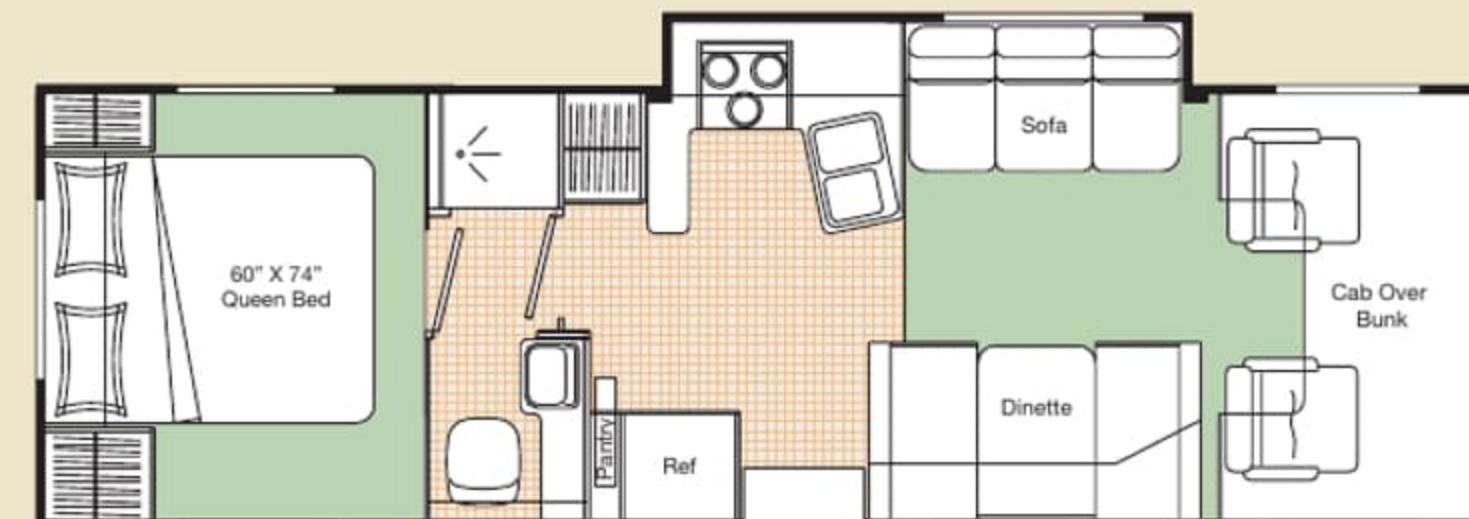
C22



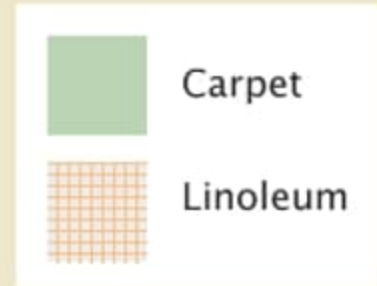
C24



C28



C30G



Product improvement is a continuing process at Triple E Recreational Vehicles. Thus, we reserve the right to change specifications on any or all products without prior notice; errors and omissions excepted. Triple E Recreational Vehicles is under no obligation to undertake modification to units manufactured prior to changes on specifications.

TRIPLE E QUALITY



Unparalleled craftsmanship



Triple E is located in the centre of Canada – in one of the most extreme climates in North America. Customers can thus be confident that our

optional XL package, designed to comfortably extend the RV season, has truly been put to the test.

Much of what you see in our products is built on site to our highest standards. In our plant you'll find an impressive, progressive production facility complete with welding shop, paint shop, fibreglass and mold shop, sewing department, and cabinet manufacturing department.

Structural integrity and durability are critical in every unit we produce – to the smallest of details. For example, cabinetry is constructed with screws rather than staples. It's the little things that make a big difference.



All Triple E products are built to CSA (Canadian Standards Association) or

RVIA (Recreational Vehicle Industry Association) Standards. Triple E was one of the first RV manufacturers to obtain the ISO 9002 certification – your assurance of the careful construction and high quality materials that are part and parcel of every Triple E unit.

Triple E is proud to offer a
2 YEAR LIMITED WARRANTY
on structure as well as most major components.
Please see your dealer for further details.



This combination of labels assures the purchaser that the manufacturer has met or surpassed CSA-CRVA-RVIA standards covering electrical services, gas services, plumbing services, and vehicular safety.


Regency Motorhomes exceed 96 inches in width. In some states, 96 inches is the maximum width of vehicles travelling some or all state roads. It is the responsibility of the owner to be familiar with the road usage laws of the states in which you travel.



P.O. Box 1230, Winkler, MB
Canada R6W 4C4
Tel: (204) 325-4361
Fax: (204) 325-5241
www.tripleerv.com

TAKE FREEDOM *Further*

Brochure pictures may be shown with optional equipment.

 Full of possibilities. Full of life. View the entire family of Triple E products at www.tripleerv.com.

TRIPLE E QUALITY



Unparalleled craftsmanship



Triple E is located in the centre of Canada – in one of the most extreme climates in North America. Customers can thus be confident that our

optional XL package, designed to comfortably extend the RV season, has truly been put to the test.

Much of what you see in our products is built on site to our highest standards. In our plant you'll find an impressive, progressive production facility complete with welding shop, paint shop, fibreglass and mold shop, sewing department, and cabinet manufacturing department.

Structural integrity and durability are critical in every unit we produce – to the smallest of details. For example, cabinetry is constructed



with screws rather than staples. It's the little things that make a big difference.

All Triple E products are built to CSA (Canadian Standards Association) or

RVIA (Recreational Vehicle Industry Association) Standards. Triple E was one of the first RV manufacturers to obtain the ISO 9002 certification – your assurance of the careful construction and high quality materials that are part and parcel of every Triple E unit.

Triple E is proud to offer a
2 YEAR LIMITED WARRANTY
on structure as well as most major components.
Please see your dealer for further details.



This combination of labels assures the purchaser that the manufacturer has met or surpassed CSA-CRVA-RVIA standards covering electrical services, gas services, plumbing services, and vehicular safety.

Regency Motorhomes exceed 96 inches in width. In some states, 96 inches is the maximum width of vehicles travelling some or all state roads. It is the responsibility of the owner to be familiar with the road usage laws of the states in which you travel.



P.O. Box 1230, Winkler, MB
Canada R6W 4C4
Tel: (204) 325-4361
Fax: (204) 325-5241
www.tripleerv.com

TAKE FREEDOM *Further*

Brochure pictures may be shown with optional equipment.



Full of possibilities. Full of life. View the entire family of Triple E products at www.tripleerv.com.