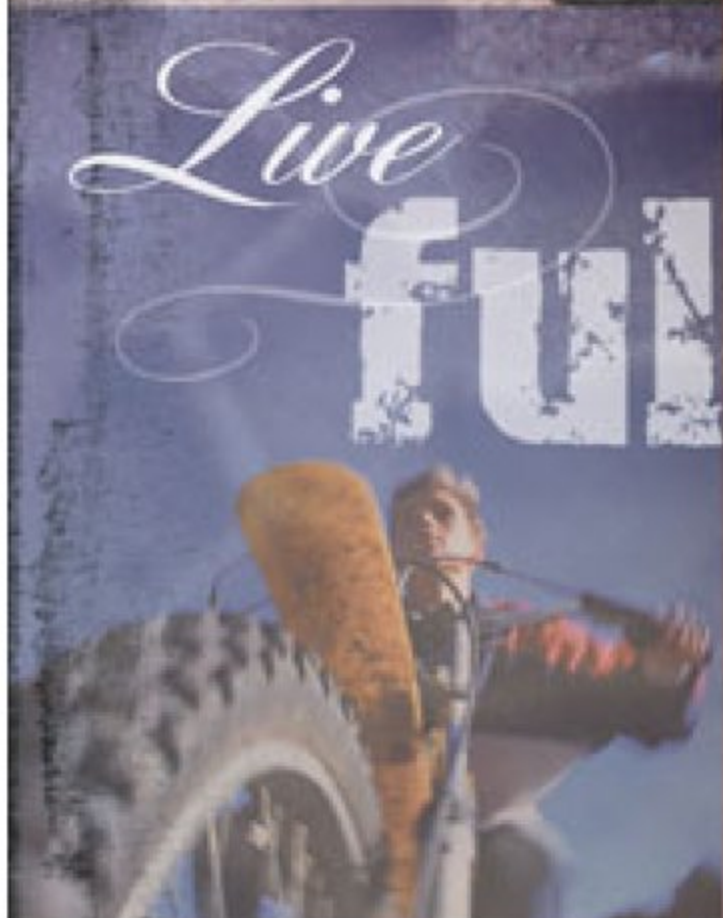
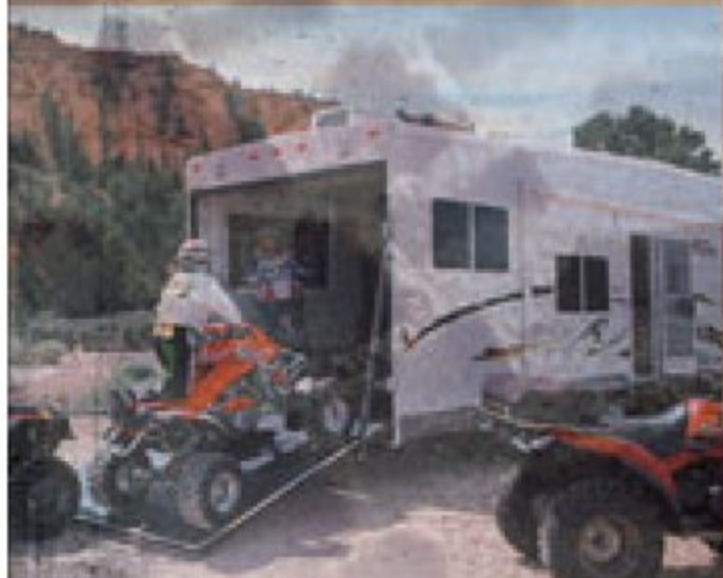


Next Level
BY HOLIDAY RAMBLER



Live
full-throttle



HOLIDAY RAMBLER

This is Living

FULL-THROTTLE ADRENALINE.

If your idea of a great weekend includes motorcycles, snowmobiles, ATVs or other heart-pounding machines, you've found the best way to make it all happen. The 2005 Next Level by Holiday Rambler. This toy hauler is loaded with features, including a huge rear ramp door rated for 2,500 pounds, wrap storage doors, front roof rack and ladder and 15" chrome sport wheels. Inside, you'll find the perfect combination of comfort and style, with diamond plate surfaces, drop-down Electro-Majic™ bed and plush Ultraleather™ furnishings. This year, we've also added more kick to the sound system, and you have some great new options, including a satellite radio and a built-in vacuum. Add to these our exclusive Alumaframe® construction, and you've got a rugged rig that knows what it means to go all out.



**Vintage Oak**



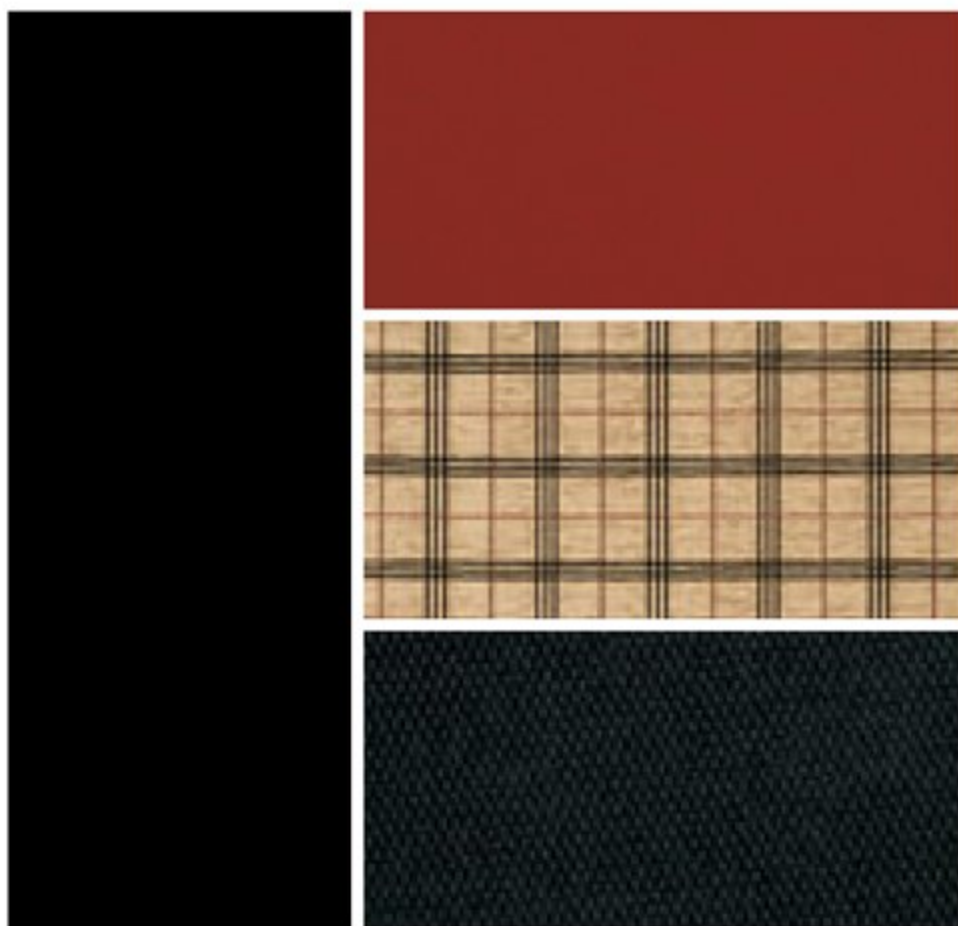
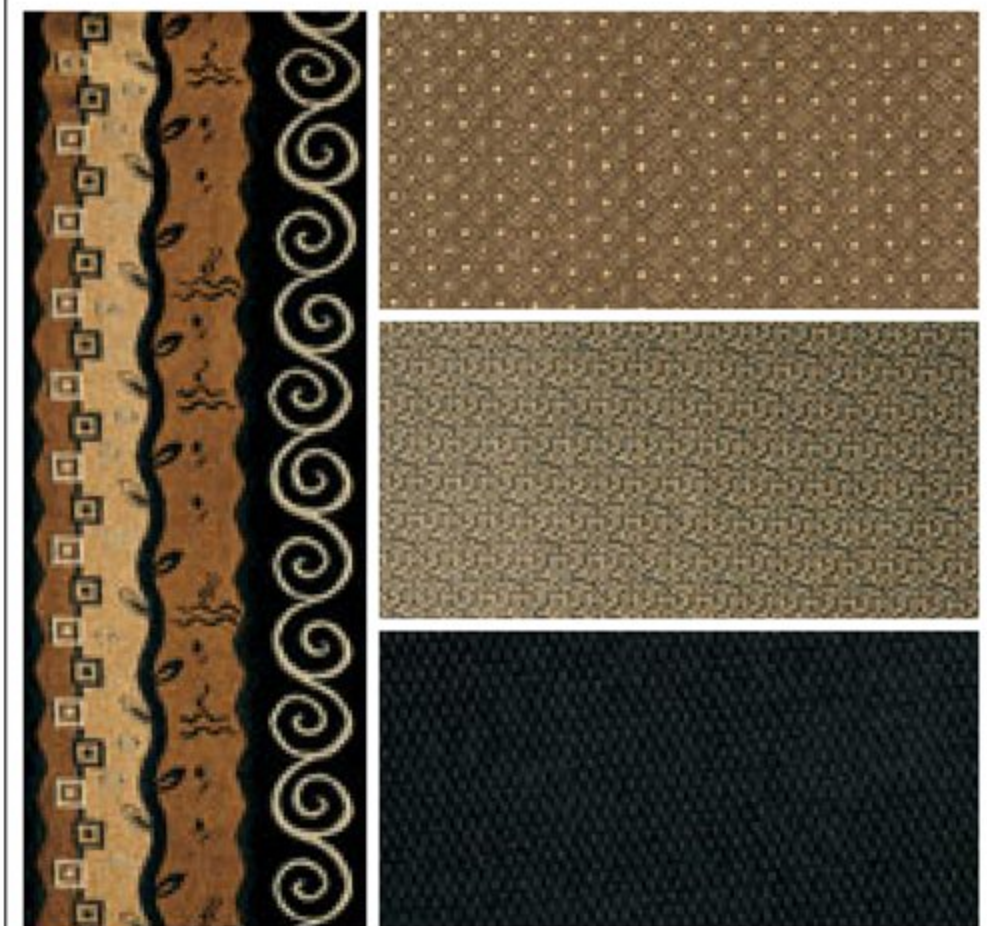
**BETTER
STAIN
PROTECTION**

Manufactured in, not added on. For added protection against stains, Dupont Teflon® soil repellent is applied to virtually all upholstery fabric during the finishing process for superior coverage.*

*Brand and application of upholstery fabric protection may vary depending on date recreational vehicle was manufactured.

A	B
	C
	D

- A** Sofa
B Accent
C Bedspread
D Carpet

**WEEKEND ATTITUDE****LATIN BEAT**

BODY CONSTRUCTION**STANDARD FEATURES**

- 102" Wide Body
- Alumaframe® Superstructure
- E-Coated I-Beam Frame
- Vinyl Exterior Graphics
- Smooth .040 Aluminum Exterior Walls
- Fiberglass Front Cap
- Slide-Out Lock Down Arms with Slide-Out Room Option
- 3/8" Foam Core, Thermal Barrier Laminated Sidewall Structure
- Prep for Spare Tire
- Two-Tone Color Fender Skirts/Wraps
- 1-1/2" Steel Framed Subfloor
- Laminated OSB Flooring
- 9 Flush-Mounted Tie-Downs – 2,500 Lb. Capacity
- Polished Anodized Diamond Plate Cargo Wall Protector
- Aluminum Roof Structure with Double I-Beam Roof Rafter 16" On-Center
- Brite Tek™ Exterior Roof Material
- Vapor Barrier in Roof
- Hard Board Vinyl Ceiling
- 2-5/16" Ball Coupler (33CK)
- Front Roof Rack and Ladder
- Frame-Mounted Triple Step
- Power Landing Jacks
- 5,200 Lb. Nev-R-Lube Triple Axles with Electric Brakes
- 15" Radial Tires
- Stylized 15" Sport Wheels with Chrome Center Hub
- Enclosed Underbelly (33CK)
- Beaver Tail Floor
- 2500 Lb. Rated Ramp Door
- 95 1/4" Wide Rear Ramp Door
- Non-Skid Ramp Door Flooring
- Cam Lock Rear Door Locking System
- Wrap Storage Doors
- Frame-Mounted Entry Step

OPTIONS

- Stabilizer Jacks
- Lighted Power Hitch Jack (33CK)
- Shock Absorbers
- Chrome Rims (6 Wheels)
- Recessed Spare Tire with Sport Wheel
- Enclosed Underbelly (Fifth Wheel Only)
- Flip Over Transition Ramp
- Trailair® Air Ride Suspension System
- Smooth Gel Coat Fiberglass Sidewalls
- Wheel Chocks
- Electric Winch with Tether Remote

APPLIANCES AND ACCESSORIES**STANDARD FEATURES**

- 8 Cu. Ft. 2-Way Refrigerator with Brushed Nickel Insert Panel
- Microwave with Touch Control
- High-Output 3-Burner Range with Oven
- Systems Monitor Panel on Range Hood with Exhaust Fan
- 12V Stereo with Exterior Speaker
- Telephone Jacks in Kitchen and Bedroom Area

OPTIONS

- 10 Cu. Ft. 2-Way Refrigerator without Ice Maker
- Three-Burner Cooktop without Oven
- Convection Microwave
- 19" Color TV with Remote Control in Living Room Area (TV Swivel Base Required)
- 13" Color TV with Remote Control in Bedroom
- TV Swivel Base (Required Option for 19" TV Option)
- Roll-Out Pantry with Cabinet with 3 Baskets (N/A: 34CK, 38CK, 38FKS)
- Outside Cooking Grill with Quick Disconnect
- Built-In Vacuum with Deluxe Tools
- Satellite Radio
- Four 2-Way Portable Rechargeable Radios
- Pop-Up Hamper/Trash Can
- Built-In Safe
- Air Compressor

INTERIOR**STANDARD FEATURES**

- Vintage Oak Cabinets
- Oak Flat Panel Cabinet Doors
- Brushed Nickel Cabinet Hardware
- Catches on All Interior Drawers
- Low-Friction Roller Drawer Guides
- Brushed Nickel Refrigerator Door
- Diamond Plate Slide-Out Room Fascia Insert with Trim Piece and Rosette
- Laminate Kitchen Countertop with Corian® Accent Edge (Galley and Lavatory)
- Diamond Plate Galley and Lavatory Backsplash
- Built-In Kitchen Trash Can
- Silverware Tray
- Vintage Oak 6-Panel Interior Doors
- TV Cabinet in Bedroom
- Toilet Tissue Holders
- Towel Rack in Stool Room
- Carpeting and Pad in Bedroom
- Utility Center by Entrance Door
- Linoleum in Kitchen, Bath and Entry
- Overhead Cabinets with Additional Storage and Cargo Netting above Sofa (Cargo Netting N/A: 33CK, 38FKS)
- Overhead Storage Attic above Kitchen (N/A: 33CK, 38FKS, 38CKS)
- Magazine Rack in Stool Room

OPTIONS

- Decor: Weekend Attitude and Latin Beat
- Kitchen Countertop Extension (N/A: 38CKS)
- Patent Pending Electro-Majic™ Bed with Ladder (King Size with Two 24" Flush-Mounted Clothes Hangers)
- Cargo Divider Wall with Drop Down Air Conditioner Pre-Wire and 50 Amp Service
- Surged Carpet for Cargo Area
- Cargo Privacy Screen
- Utility Center – Folding Table with Shelves (N/A: 38FKS)

FURNITURE**STANDARD FEATURES**

- 60" x 96" Front Bed (33CK)
- Overhead Cabinets with TV Shelf (33CK)
- Side Queen Bed with Front Wardrobe
- Chest of Drawers with TV Shelf (N/A: 33CK)
- Polyethylene Indoor/Outdoor Table
- One 79" Roll-Over Sofa (Roadside)
- 40" x 60" Roll-Over Dinette (Curbside)
- Bedspread
- Hardwood Headboard with Decorative Insert Panels

OPTIONS

- Roll-Over Sofa ILO Dinette (N/A: 38FKS)
- Second Roll-Over Sofa (Roadside) (38CK)
- Two Barrel Chairs ILO Dinette
- Two Additional Barrel Chairs (38CK, 38CKS)
- Queen Bed Slide-Out with Chest of Drawers and Overhead TV Cabinet (Fifth Wheel Only)
- Twin Beds with Wardrobes (Fifth Wheel Only)
- Second Indoor/Outdoor Table

ELECTRICAL SYSTEMS AND LIGHTS**STANDARD FEATURES**

- Digital 12V Linear Series AM/FM with CD/DVD Player Stereo with 6 Upgraded Speakers, 40 Watt Amp and Subwoofer
- Two Weatherproof Exterior Speakers
- Wider Wall Switches
- Fluorescent Light in Kitchen
- 12V Incandescent Lights with Clear Lens
- Electrical Management System
- Porch Light
- Six Docking Lights 12V (2 Side and 2 Rear Recessed, 2 End of Cargo Overhead Cabinets)
- 120V Exterior Receptacle
- LED Taillights
- Disconnect and Battery Box
- Trunk Light
- Bathroom Bar Light
- Cable TV/DSS VCR Ready with Video Box
- 12V Receptacle Located in Kitchen
- Wineguard® TV Antenna with Cable Box
- Emergency Pump Station Shut-Off Switch
- Dual Exterior Cable/Satellite Receptacle

OPTIONS

- One 12V Deep Cycle Battery with Disconnect
- Two 12V Deep Cycle Batteries with Disconnect
- Solar Prep
- Fluorescent Lighting in Living Area and Kitchen
- 50 Amp Electric Service
- Generator Prep 5.5 kW 20-Gallon Fuel Tank (Remote Switch with Hour Meter Fuel Gauge)
- 5.5 kW Marquis Gold Gas Onan® Generator with 20-Gallon Tank
- Pump Station with 40-Gallon Tank, Timer Switch and Fuel Gauges in Utility Center

PLUMBING AND LP SYSTEMS**STANDARD FEATURES**

- Large Stainless Steel Kitchen Sink with Brushed Nickel Single Handle Pullout Faucet
- Demand Water System with Water Pump
- 10-Gallon LP Gas/Electric Water Heater with Electronic Ignition
- Stainless Steel Bathroom Sink with Brushed Nickel Faucet
- Brushed Nickel Shower Fixtures
- Brushed Nickel Shower Hose and Head
- Medicine Cabinet with Mirror
- ABS Tub/Shower with Curtain (34CK, 38CK, 33CK)
- ABS Shower with One-Piece Surround and Curtain (37CK, 38FKS, 38CKS)
- Water Management System with Bottom Drain (Includes Outside Shower)
- Water Heater Bypass Kit
- Thetford High-Profile Toilet
- Two 30 Lb. LP Tanks with Automatic Changeover and Cover
- Water Heater Switch inside Unit
- Spray-Away Sprayer with Hose
- Sewer Hose Storage with Hatch and Tube

OPTIONS

- No-Fuss Flush
- Accordion Shower Door (33CK, 34CK, 38CK)
- Shower with Sliding Glass Door (33CK, 34CK, 38CK)
- ABS Shower with One-Piece Surround with Glass Door (37CK, 38CKS, 38FKS)

HEATING, VENTS AND AIR CONDITIONING

STANDARD FEATURES

- One Carrier 13.5M BTU Rooftop Air Conditioner with Remote Control
- 35M BTU Hydroflame Electronic Ignition Furnace (33CK)
- 40M BTU Hydroflame Electronic Ignition Furnace
- Ducted Heating System
- Manual Roof Vent
- 12V Roof Vent in Bathroom
- Wire Prep and Ducting for Second Air Conditioner with Optional 50 Amp Service

OPTIONS

- 12V Roof Vent in Cargo/Rear Roof Locations
- One Carrier High-Capacity Rooftop Air Conditioner ILO 13.5M BTU with Remote Control
- Second Carrier 13.5M BTU Rooftop Air Conditioner with Remote in Cargo Area
- Attic Fan with Thermostat and Rain Sensor with 2-Way Switch (Except Rear Cargo/Bathroom 1-Direction)

WINDOWS, DOORS AND AWNINGS

STANDARD FEATURES

- Dark Tinted Radius Windows
- Tinted Skylight in Bathroom
- 30" Radius Main Entrance Door with Anti-Skid Steps
- Window in Stool Room

OPTIONS

- Rear Entry Door
- "Checkered Flag" Texturized Fabric Awning
- Patio Screen Room
- Bedroom Slide-Out Cover
- Swing-Out Entry Door Handle
- Rear Ramp Door Screen

WINDOW TREATMENTS

STANDARD FEATURES

- Brushed Nickel Mini Blinds
- Padded Valances and Lambrequins Throughout

SAFETY FEATURES

STANDARD FEATURES

- Fire Extinguisher (10 Lb.)
- Deadbolt Lock on Entrance Door
- 120V GFI Protected Outlets
- Breakaway Switch
- LP Gas Detector
- Smoke Detector
- Egress Window(s)
- Safety Glass

Due to the large variety of options and floorplan arrangements available to our customers, actual weights for each unit can differ significantly. Holiday Rambler provides a weight sticker on each unit we produce which includes that unit's tank capacities and approximate weight. Consult your local Holiday Rambler dealer for unit availability and further information.

The information printed in this brochure reflects product design, fabrication, and component parts at the date of printing. The manufacturer reserves the right, at any time, to make changes in product design or material or component specifications as its sole option, without notice. This includes the substitution of components of a different brand or trade name, which will result in comparable performance. All information printed in this brochure is subject to change after the date of printing. Some features shown or mentioned in this brochure are optional and may only be available in selected floorplans. Photographs may show props or decorations that are not standard equipment on Holiday Rambler models. Holiday Rambler, the HR logo and its design, are registered trademarks. All other products and company names are trademarks and/or registered trademarks of their respective holders.

While the color of the towable's exterior and the interior fabrics depicted in this sales brochure are fair and reasonable depictions, the colors depicted may not be an exact match of the actual colors because of the variances in photo-processing and variances caused by inserting the photographs within the sales brochure. Due to product improvements, changes during the model year and/or transcription errors that may occur, information represented within this brochure may not be accurate at the time of your purchase. If certain information is significant to your purchasing decision, please confirm the information with your dealer prior to submitting your order.

The actual overall length of the recreational vehicle may differ from that indicated in the brochure due to variances in the manufacturing process and/or installed components. The actual length may be greater or less than that indicated.

FIFTH WHEEL

Weights*	34CK	37CK	38CK	38CKS	38FKS
Gross Vehicle Weight Rating (Lbs.)	16,950	16,950	16,950	16,950	16,950
Hitch Weight (Lbs.)	2,470	2,820	2,780	N/A	N/A
Hitch Height	51"	51"	51"	51"	51"
Axle(s) Weight (Lbs.)	5,200	5,200	5,200	5,200	5,200
Unloaded Vehicle Weight (Lbs.)	10,040	10,340	10,350	N/A	N/A
Net Carrying Capacity (NCC)	6,910	6,610	6,600	N/A	N/A
Tire Size	15"	15"	15"	15"	15"
Tire Load Range	D	D	D	D	D
Measurements					
Overall Length	35' 6"	36' 8"	39' 10"	39' 10"	39' 10"
Overall Height (with A/C)	152"	151-1/4"	152-1/4"	N/A	N/A
Exterior Width	102"	102"	102"	102"	102"
Tank Capacity**					
Water Heater (Gal.)	10	10	10	10	10
Gray Tank (Gal.)	50	50	50	50	50
Black Tank (Gal.)	50	50	50	50	50
Fresh Tank (Gal.)	130	130	130	130	130
LP Tank (Gal.)***	30 (2)	30 (2)	30 (2)	30 (2)	30 (2)

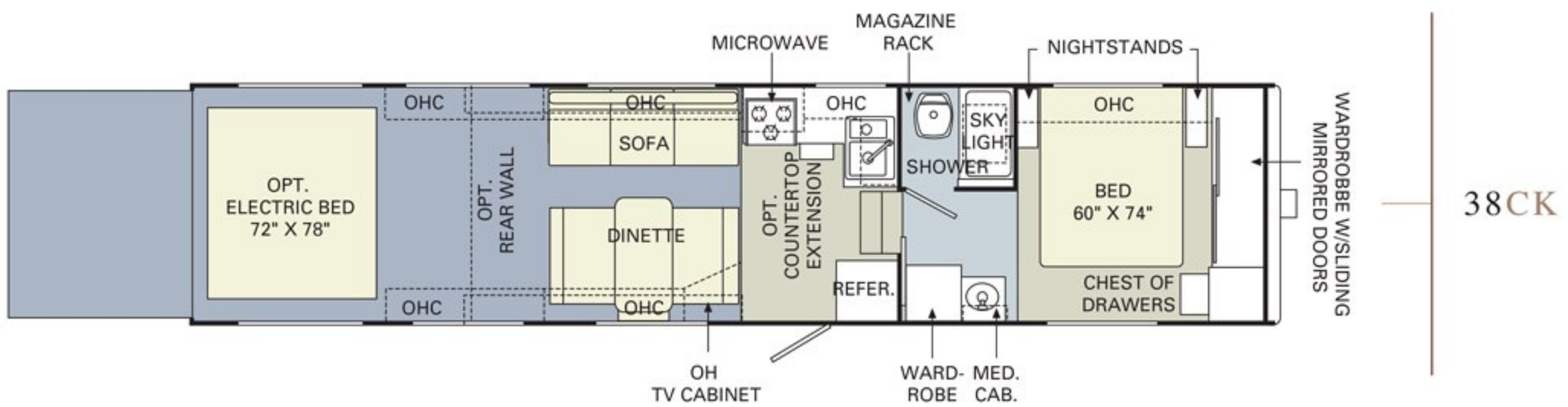
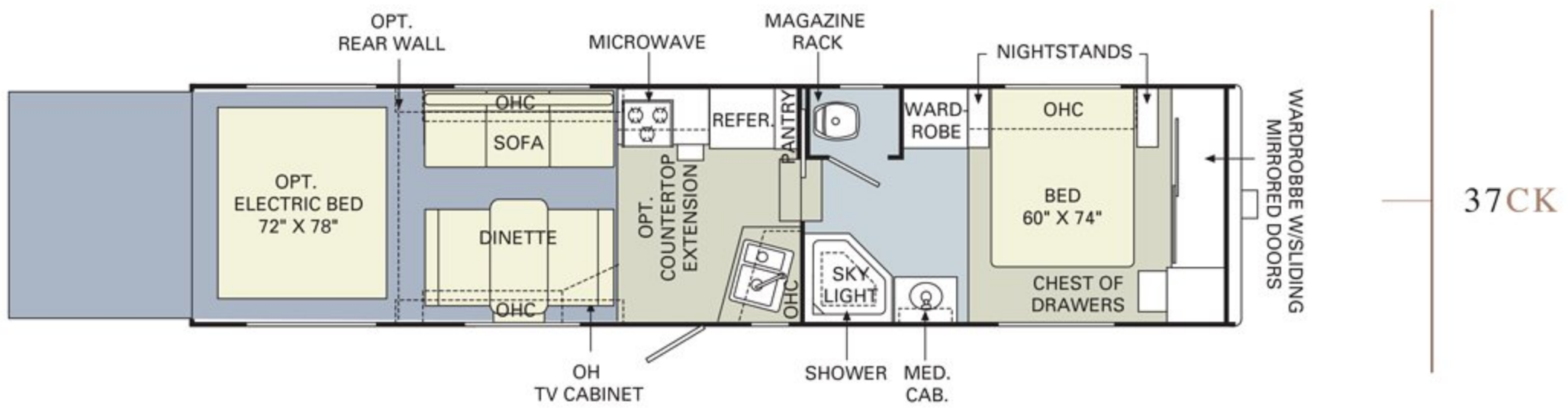
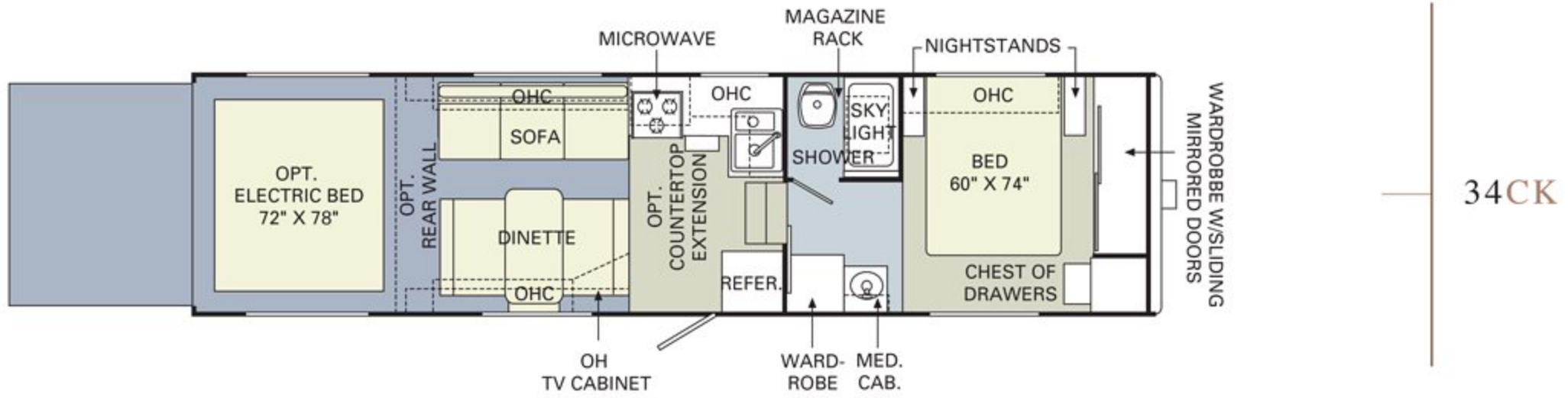
TRAVEL TRAILER

Weights*	33CK
Gross Vehicle Weight Rating (Lbs.)	13,000
Hitch Weight (Lbs.)	TBD
Hitch Height	TBD
Axle(s) Weight (Lbs.)	5,200
Unloaded Vehicle Weight (Lbs.)	TBD
Net Carrying Capacity (NCC)	TBD
Tire Size	15"
Tire Load Range	D
Measurements	
Overall Length	34' 11"
Overall Height (with A/C)	138 1/2"
Exterior Width	102"
Tank Capacity**	
Water Heater (Gal.)	10
Gray Tank (Gal.)	50
Black Tank (Gal.)	50
Fresh Tank (Gal.)	130
LP Tank (Gal.)***	30 (2)

* Weights may vary by options.

** All tank capacities are estimated based upon calculations provided by the tank manufacturers and represent approximate capacities. The actual "usable capacity" may be greater or less than the estimated capacities based upon fabrication and installation of the tanks.

*** Actual filled LP capacity is 80% of listing due to safety shut-off required on tank.



CARPET
 LINOLEUM
 LAMINATED PVC FLOOR

