

2005 | SAVOY SL™



This is Living®

HR HOLIDAY RAMBLER®



Weights	27RKD	28RLS	29RKS	29RLS	29SKD	30BHS
Gross Vehicle Weight Rating	9,950	9,950	9,950	9,950	9,950	9,950
Hitch Weight	TBD	1,400	1,525	TBD	1,640	1,740
Axle(s) Weight	TBD	5,200	5,200	TBD	5,200	5,200
Unloaded Vehicle Weight	TBD	7,200	7,550	TBD	7,930	7,890
Net carrying Capacity (NCC)	TBD	2,750	2,440	TBD	2,020	2,060
Tire Size	15"	15"	15"	15"	15"	15"
Tire Load Range	D	D	D	D	D	D

Measurements	27RKD	28RLS	29RKS	29RLS	29SKD	30BHS
Overall Length	28'-11"	30'-3"	30'-11"	30'-11"	30'-11"	32'-3"
Overall Height (Including A/C)	TBD	11'-11"	12'-1"	TBD	12'-1"	11'-10"
Exterior Width	98"	98"	98"	98"	98"	98"

Tank Capacities	27RKD	28RLS	29RKS	29RLS	29SKD	30BHS
Water Heater (Gal.)	6	6	6	6	6	6
Grey Tank (Gal.)	30/30	30/30	30/30	30/30	30/30	30/30
Black Tank (Gal.)	30	30	30	30	30	30
Fresh Tank (Gal.)	40	40	40	40	40	40
L.P. Tank (Gal.)***	30 (2)	30 (2)	30 (2)	30 (2)	30 (2)	30 (2)

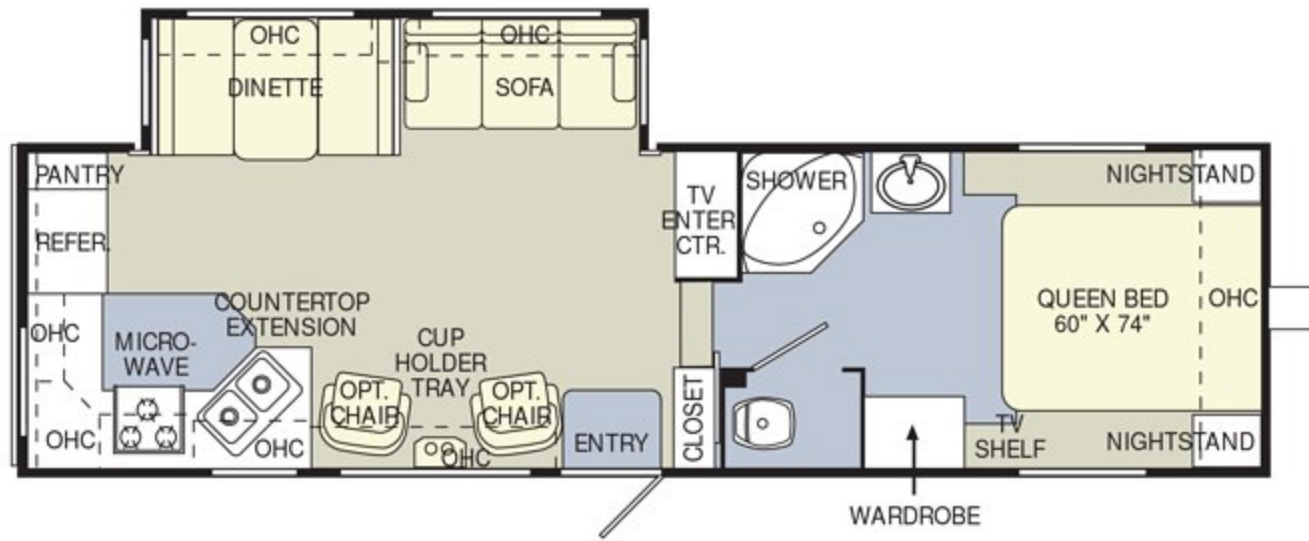
* Weights may vary by options.

** Variances in the fabrication and installation of the tanks may cause the actual "usable capacity" to be greater or less than the capacities designated above.

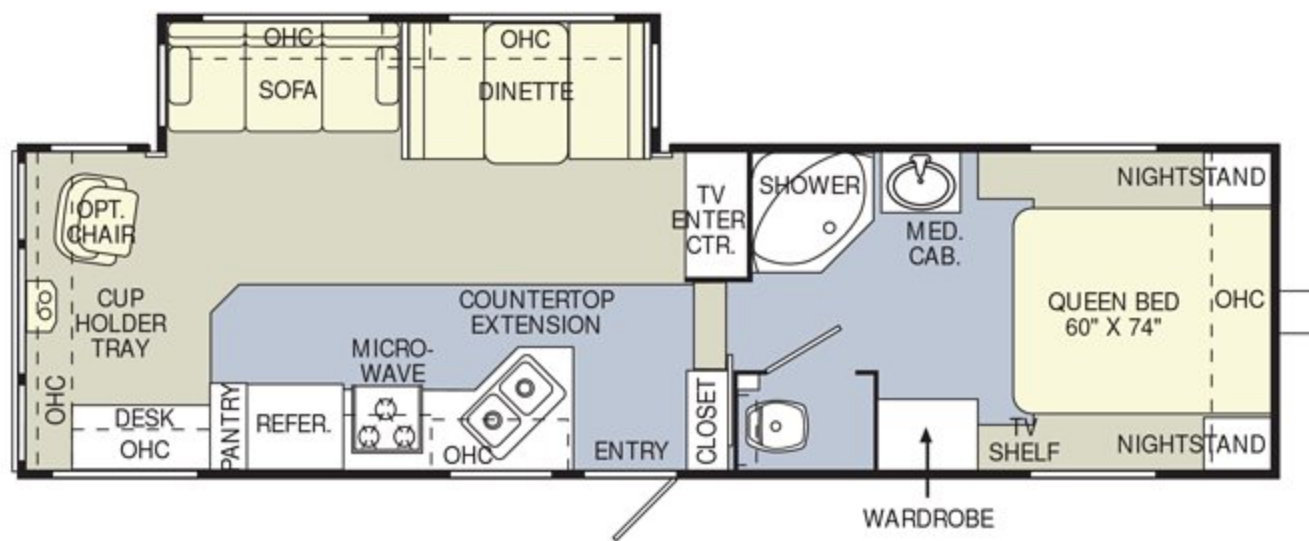
*** Actual filled LP capacity is 80% of listing due to safety shut-off required on tank.



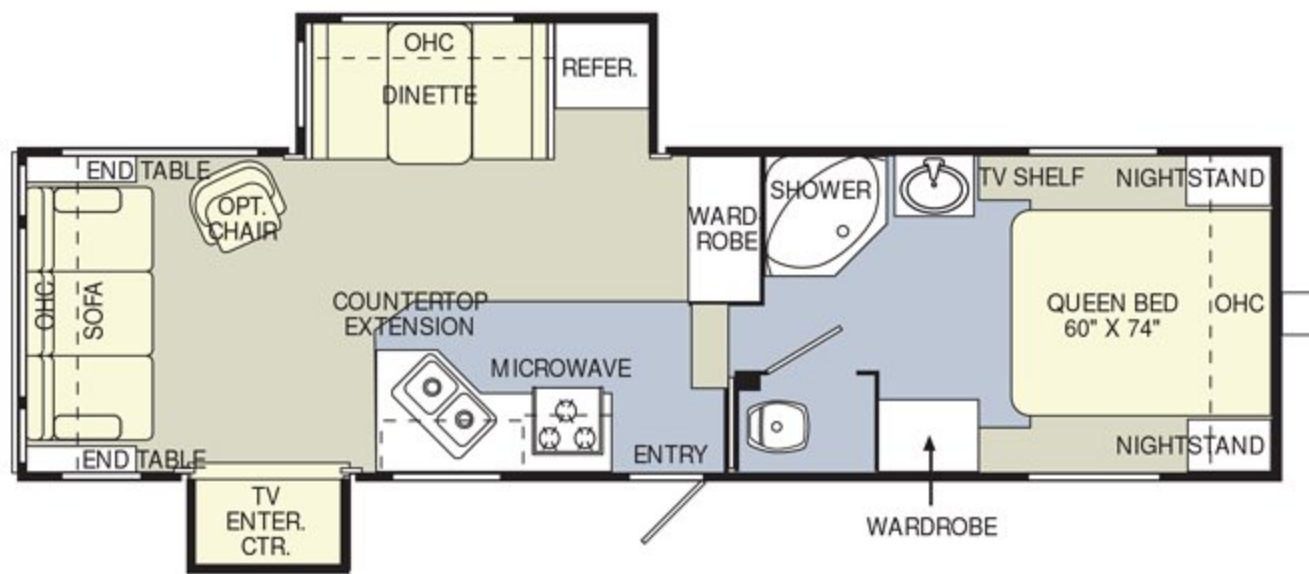
● CARPET
● LINOLEUM



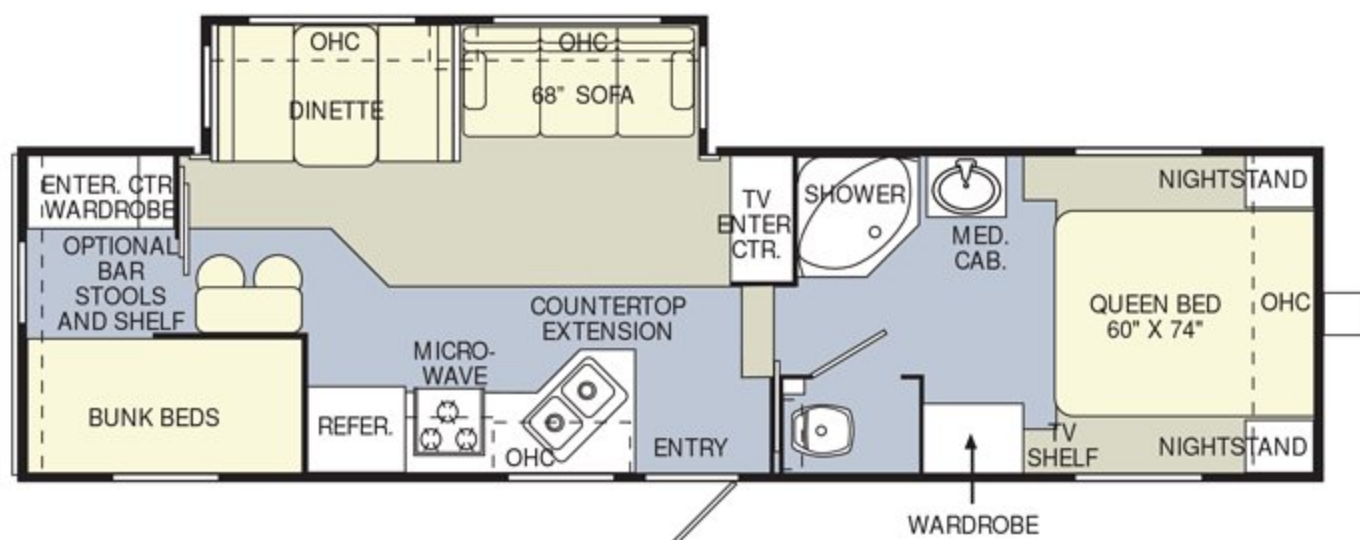
29RKS



29RLS



29SKD



30BHS

- CARPET
- LINOLEUM

Weights	26RKS	29CKS	29FKS	30CKS
Gross Vehicle Weight Rating	9,950	9,950	9,950	9,950
Hitch Weight	710	720	1,060	860
Axle(s) Weight	5,200	5,200	5,200	5,200
Unloaded Vehicle Weight	5,940	6,690	6,860	7,180
Net carrying Capacity (NCC)	4,010	3,260	3,090	2,770
Tire Size	15"	15"	15"	15"
Tire Load Range	D	D	D	D

Measurements	26RKS	29CKS	29FKS	30CKS
Overall Length	27'-8"	31'-9"	31'-9"	32'-3"
Overall Height (Including A/C)	11'-0"	11'-0"	11'-0"	11'-0"
Exterior Width	98"	98"	98"	98"

Tank Capacities	26RKS	29CKS	29FKS	30CKS
Water Heater (Gal.)	6	6	6	6
Grey Tank (Gal.)	30/30	30	30/30	30
Black Tank (Gal.)	30	30	30	30
Fresh Tank (Gal.)	40	40	40	40
L.P. Tank (Gal.)	30 (2)	30 (2)	30 (2)	30 (2)

* Weights may vary by options.

** Variances in the fabrication and installation of the tanks may cause the actual "usable capacity" to be greater or less than the capacities designated above.

*** Actual filled LP capacity is 80% of listing due to safety shut-off required on tank.

Due to the large variety of options and floorplan arrangements available to our customers, actual weights for each unit can differ significantly. Holiday Rambler provides a weight sticker on each unit we produce which includes that unit's tank capacities and approximate weight. Consult your local Holiday Rambler dealer for unit availability and further information.

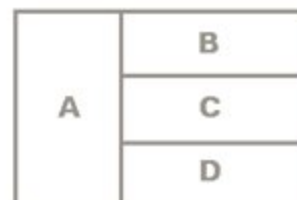
The information printed in this brochure reflects product design, fabrication, and component parts at the date of printing. The manufacturer reserves the right, at any time, to make changes in product design or material or component specifications as its sole option, without notice. This includes the substitution of components of a different brand or trade name, which will result in comparable performance. All information printed in this brochure is subject to change after the date of printing. Some features shown or mentioned in this brochure are optional and may only be available in selected floorplans. Photographs may show props or decorations that are not standard equipment on Holiday Rambler models. Holiday Rambler, the HR logo and its design, are registered trademarks. All other products and company names are trademarks and/or registered trademarks of their respective holders.

While the color of the towable's exterior and the interior fabrics depicted in this sales brochure are fair and reasonable

depictions, the colors depicted may not be an exact match of the actual colors because of the variances in photo-processing and variances caused by inserting the photographs within the sales brochure. Due to product improvements, changes during the model year and/or transcription errors that may occur, information represented within this brochure may not be accurate at the time of your purchase. If certain information is significant to your purchasing decision, please confirm the information with your dealer prior to submitting your order.

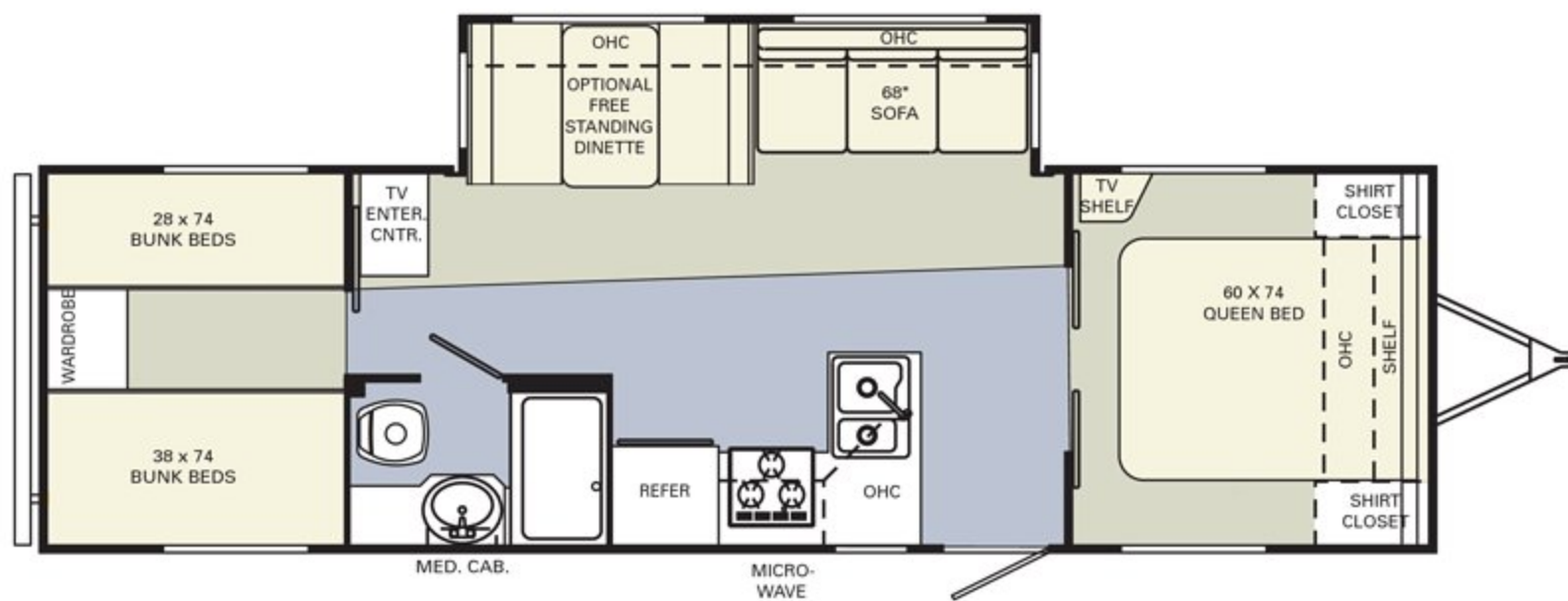
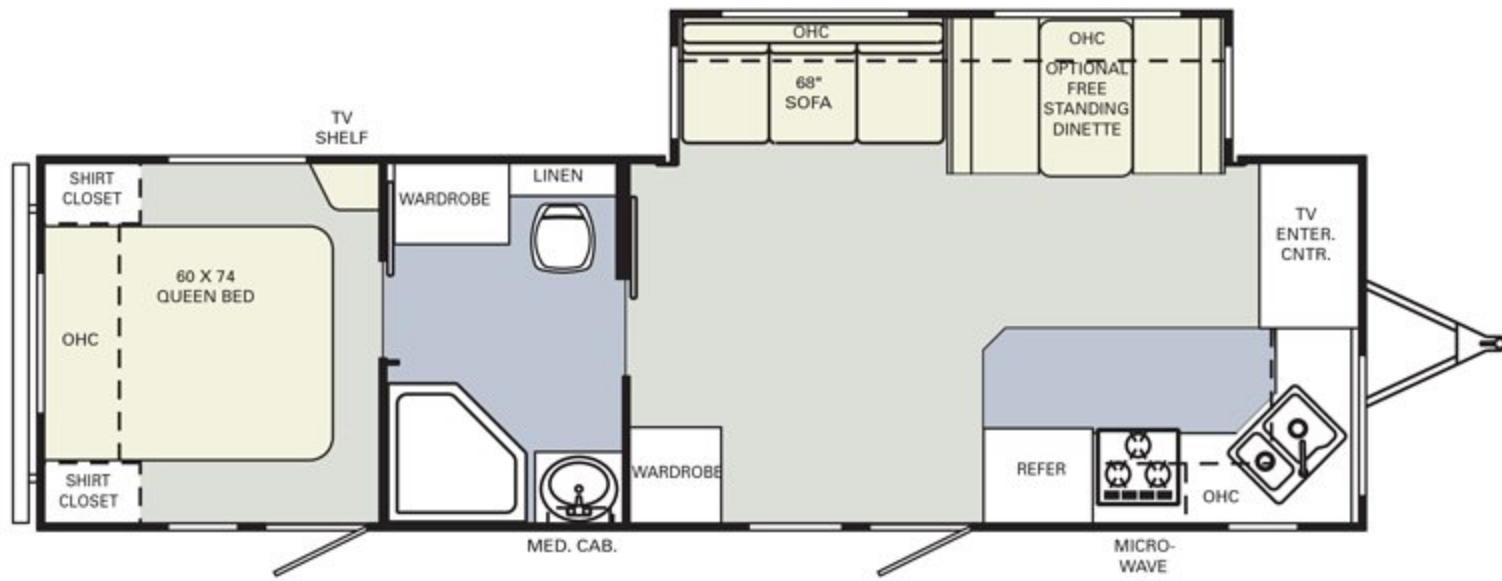
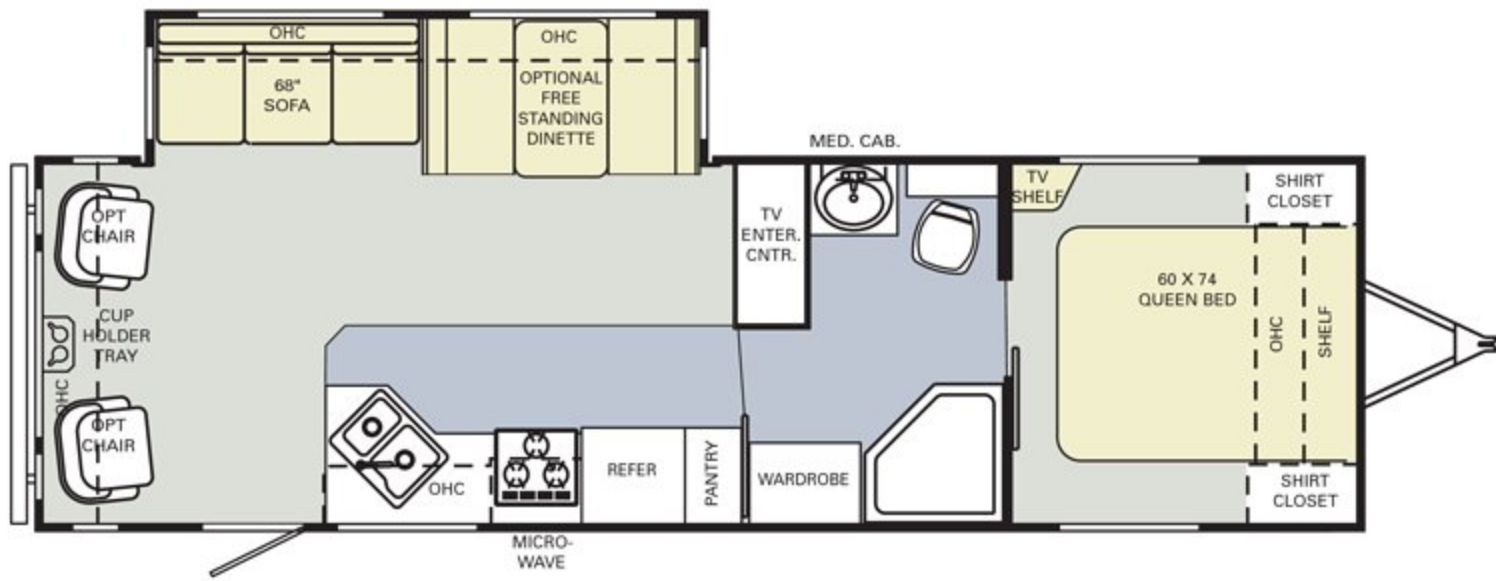
The actual overall length of the recreational vehicle may differ from that indicated in the brochure due to variances in the manufacturing process and/or installed components. The actual length may be greater or less than that indicated.

Component part and appliance manufacturers issue limited warranties covering those portions of the recreational vehicle not covered by the Limited Warranties issued by the Monaco Coach Corporation companies. To learn more on what specific component parts and appliances are excluded from the Limited Warranties issued by the Monaco Coach Corporation companies please contact your selling dealership or Monaco Coach Corporation directly or review the warranty packet inside the recreational vehicle.



- A Sofa
- B Accent
- C Bedspread
- D Carpet

Note: Colors depicted are a reasonable representation though they may not be an exact match of the actual colors due to variances in processing and production. See your dealer for actual fabric and paint chip samples.



- CARPET
- LINOLEUM



BODY AND FRAME CONSTRUCTION

	FW	TT
STANDARD FEATURES		
• 2" Laminated Sidewall Construction with Welded Aluminum Superstructure	✓	✓
• I-Beam Frame	✓	✓
• Smooth White Fiberglass Exterior Walls	✓	✓
• Front Molded Fiberglass Cap	✓	✓
• Oversized Radius Exterior Storage Door with Below-Floor Storage	✓	✓
• Color-Coordinated Painted Skirts	✓	✓
• Pass-Through Storage under Master Bed	✓	✓
• Solid Sub-Floor System	✓	✓
• Molded ABS Fender Skirts	✓	✓
• Pass-Through Storage under Master Bed	✓	✓
• Slide-Out Lock Down Arms	✓	✓
• 5/8" Sturdi-Wood Flooring	✓	✓
• 3/8" Full Walk-On Roof	✓	✓
• 5" Roof Trusses, 16" on Center	✓	✓
• Flat Floor Slide Room with Manual Backup	✓	✓
• Seamless BriteTek™ Exterior Roof Membrane	✓	✓
• Hard Board Vinyl Ceiling	✓	✓
• Extended Hitch Pin	✓	✓
• E-Z Lube Tandem Axles with Electric Brakes	✓	✓
• Triple Entry Steps	✓	✓
• Stabilizer Jacks	✓	✓
• Spare Tire with Sport Wheel and Vinyl Tire Cover Mounted on Bumper	✓	✓
• Heated and Enclosed Under-Floor Fresh and Holding Tanks	✓	✓
• Stylized 15" Radial White Sport Wheels with Black Center Hub	✓	✓

OPTIONS		
• Bike Rack	✓	✓
• Stabilizer Jacks (Rear)	✓	✓
• Front Electric Jacks	✓	✓
• Spare Tire with Sport Wheel and Vinyl Tire Cover Mounted on Bumper	✓	✓
• Rear Ladder	✓	✓

APPLIANCES

STANDARD FEATURES		
• 2-Way Refrigerator	✓	✓
• 6-Panel Refrigerator Insert	✓	✓
• Microwave with Touch Control	✓	✓
• Wedgewood High-Output 3-Burner Range with Oven	✓	✓
• Systems Monitor Panel and Water Heater Switch	✓	✓

OPTIONS		
• 13" Color TV with Remote in Living Room	✓	✓
• 19" Color TV with Remote in Living Room (N/A: 26RKS)	✓	✓

INTERIORS

STANDARD FEATURES		
• Vintage Oak Cabinets	✓	✓
• Cathedral, Raised Panel Overhead Cabinet Doors	✓	✓
• Flat Panel Base Cabinet Doors	✓	✓
• Brushed Nickel Cabinet Hardware and Accessories	✓	✓
• Slide-Out Room Wood Fascia Trim	✓	✓
• Laminate Table Top and C-Tops with Self Edging	✓	✓
• Laminate Kitchen Countertop with Self Edge	✓	✓
• Built-in Wood Knife Holder behind Stove (N/A: 27RKD)	✓	✓
• Metal Drawer Guides	✓	✓
• Coat Rack with Hooks	✓	✓
• Kitchen Sink Cover	✓	✓
• Woodgrain Passage Doors	✓	✓
• TV Shelf in Bedroom	✓	✓
• Laundry Hamper Chute	✓	✓

	FW	TT
• Toilet Tissue Holder	✓	✓
• Carpet and Pad in Living Area and Bedroom	✓	✓
• Linoleum in Kitchen, Bath and Entry	✓	✓
• Medicine Cabinet with Mirror in Bathroom	✓	✓
• Cathedral Raised Panel Oak Overhead Doors above Sofa and Dinette in Slide-Out Room	✓	✓
• Overhead Cabinets in Main Floor Slide-Out above Sofa and Dinette	✓	✓

OPTIONS		
• New Decors: Bristol Bay, Fall River, Cool Water	✓	✓
• Kitchen Countertop Extension	✓	✓

FURNITURE

STANDARD FEATURES		
• Queen Bed with Nightstands	✓	✓
• Quad Bunk Beds (30CKS)	✓	✓
• Triple Bunk Beds (30BHS)	✓	✓
• Color-Coordinated Bedspread	✓	✓
• Headboard	✓	✓
• Jackknife Sleeper Sofa	✓	✓
• Wood Booth Dinette and Arched Back Cushions	✓	✓

OPTIONS		
• Hide-A-Bed Sofa	✓	✓
• Swivel Barrel Chair (29CKS, 29FKS) (N/A: 30BHS)	✓	✓
• Ultra Vinyl Swivel Barrel Chair (29CKS, 29FKS) (N/A: 30BHS)	✓	✓
• Freestanding Dinette Table with Four Wood Chairs	✓	✓
• Bar Stools (28RLS)	✓	✓

ELECTRICAL SYSTEMS AND LIGHTS

STANDARD FEATURES		
• Electrical Management System – 30Amp/12V with 55Amp Converter	✓	✓
• AM/FM, CD Stereo with 4 Speakers	✓	✓
• Porch Light	✓	✓
• 120V Exterior Receptacle	✓	✓
• Hitch Light	✓	✓
• Trunk Light	✓	✓
• Disconnect and Battery Box	✓	✓
• Security Light with Switch	✓	✓
• 12V Incandescent Ceiling Lights	✓	✓
• Wineguard® TV Antenna with Booster	✓	✓
• Solar Prep	✓	✓
• Cable TV Hook-Up	✓	✓
• Exterior Cable Receptacle	✓	✓

OPTIONS		
• Security Light with Switch	✓	✓

PLUMBING AND LP SYSTEMS

STANDARD FEATURES		
• Deep Double Bowl Kitchen Sink with High-Profile Double Handle Faucet	✓	✓
• Demand Water System with SHURflo® Water Pump	✓	✓
• 6-Gallon LP Gas/Electric Water Heater with Electronic Ignition	✓	✓
• Extra Large Lavatory with Double Handle Faucet	✓	✓
• Water Heater Bypass Kit	✓	✓
• ABS Tub with Surround – Shower Curtain (30CKS)	✓	✓
• ABS Shower with Surround – Shower Curtain (27RKD)	✓	✓
• ABS Neo-Angle Shower with One-Piece Surround with Shower Curtain (N/A: 30CKS) (N/A: 27RKD)	✓	✓
• Outside Shower	✓	✓
• Thetford Toilet	✓	✓
• Two 30-Lb. LP Tanks Split with Automatic Changeover	✓	✓
• Chrome Bumper Cover – Sewer Hose Storage with Hatch and Tube	✓	✓

	FW	TT
OPTIONS		
• Shower with Accordion Door (27RKD)	✓	✓
• ABS Tub with Triple Pane Glass Door (30CKS) (27RKD)	✓	✓
• ABS Neo-Angle Shower with Glass Door (N/A: 30CKS) (N/A: 27RKD)	✓	✓
• ABS Tub with Curtain (27RKD)	✓	✓
• ABS Tub with Accordion Door (27RKD)	✓	✓

HEATING, VENTS AND AIR CONDITIONING

STANDARD FEATURES		
• 30M BTU Hydroflame Electronic Ignition Furnace	✓	✓
• One Carrier 13,500M BTU Rooftop Air Conditioner with Remote Control	✓	✓
• In-Room Ducted Heating System	✓	✓
• Manual Roof Vent – Rear Vent and Front Bedroom	✓	✓
• 12V Roof Vent in Bathroom	✓	✓

OPTIONS		
• One Carrier High-Capacity Rooftop Air Conditioner ILO 13,500M BTU with Remote Control	✓	✓

WINDOWS AND DOORS

STANDARD FEATURES		
• Main Awning	✓	✓
• Tinted Radius Windows	✓	✓
• Tinted Skylight in Bathroom	✓	✓
• Main Entrance Door with Anti-Skid Steps	✓	✓

OPTIONS		
• Safety Glass	✓	✓
• Main Awning	✓	✓
• Padded Folding Entry Door Handle	✓	✓

WINDOW TREATMENTS

STANDARD FEATURES		
• Pleated Day/Night Shades in Living Area and Bedroom	✓	✓
• Living Room: Padded Valances and Drapes	✓	✓
• Kitchen: Mini Blinds and Valance	✓	✓
• Bedroom: Soft Valances	✓	✓

OPTIONS		
• Pleated Day/Night Shades in Living Area and Bedroom	✓	✓

SAFETY FEATURES

STANDARD FEATURES		
• Fire Extinguisher	✓	✓
• Deadbolt Lock(s) on Entrance Door(s)	✓	✓
• 120V GFI Protected Outlets	✓	✓
• Breakaway Switch	✓	✓
• LP Gas Detector	✓	✓
• Smoke Detector	✓	✓
• Egress Window(s)	✓	✓

CAMPING VALUE PACKAGE ITEMS:		
• Stabilizer Jacks (Rear)	✓	✓
• Front Electric Jacks	✓	✓
• Spare Tire with Sport Wheel and Vinyl Tire Cover Mounted on Bumper	✓	✓
• Rear Ladder	✓	✓
• 19" TV in Living Room	✓	✓
• Kitchen Countertop Extension	✓	✓
• Security Light with Switch	✓	✓
• Main Awning	✓	✓
• Pleated Day/Night Shades in Living Area and Bedroom	✓	✓