

2005 ESQUIRE™

ESQUIRE™
2005



MONACO



MONACO™

DRIVING YOUR DREAM.™

2005 ESQUIRE™

ESQUIRE™
2005



MONACO



MONACO

DRIVING YOUR DREAM.™

Meet the new kid on the Monaco team — the all-new Esquire mini-motorhome. This easy-to-drive RV is big on livable features while sacrificing none of the craftsmanship you'd expect from a Monaco. You'll love the beautiful styling of the woodwork, including the raised panel overhead cabinet doors with woven raffia inserts, the crown molding, and the decorative slide-out fascia. Fluorescent ceiling lights illumine the interior, and in the galley the overhead light features a decorative wood frame. In the dining area, you'll enjoy a wood booth dinette with side-sliding table top and built-in storage. Or, you may choose an optional freestanding table with chairs. In either case, you'll have a versatile workspace, thanks to the addition of a computer hook-up with phone jack.

DRIVING YOUR DREAM.

Dreams. They're the way we write the story of our lives. Some are serious. Like raising kids or building a business. Others are pure fun. Like the dream you have early on a summer morning, sipping coffee and working on your life's next chapter. It's about making big plans and changing them on a whim. Or even better, following your heart without any plans at all. Yes, it's the dream of a lifetime. And with Monaco's legendary quality, reliability and innovation, we can make it all come true.



MONACO

DRIVING YOUR DREAM.™



Meet the new kid on the Monaco team — the all-new Esquire mini-motorhome. This easy-to-drive RV is big on livable features while sacrificing none of the craftsmanship you'd expect from a Monaco. You'll love the beautiful styling of the woodwork, including the raised panel overhead cabinet doors with woven raffia inserts, the crown molding, and the decorative slide-out fascia. Fluorescent ceiling lights illumine the interior, and in the galley the overhead light features a decorative wood frame. In the dining area, you'll enjoy a wood booth dinette with side-sliding table top and built-in storage. Or, you may choose an optional freestanding table with chairs. In either case, you'll have a versatile workspace, thanks to the addition of a computer hook-up with phone jack.

DRIVING YOUR DREAM.

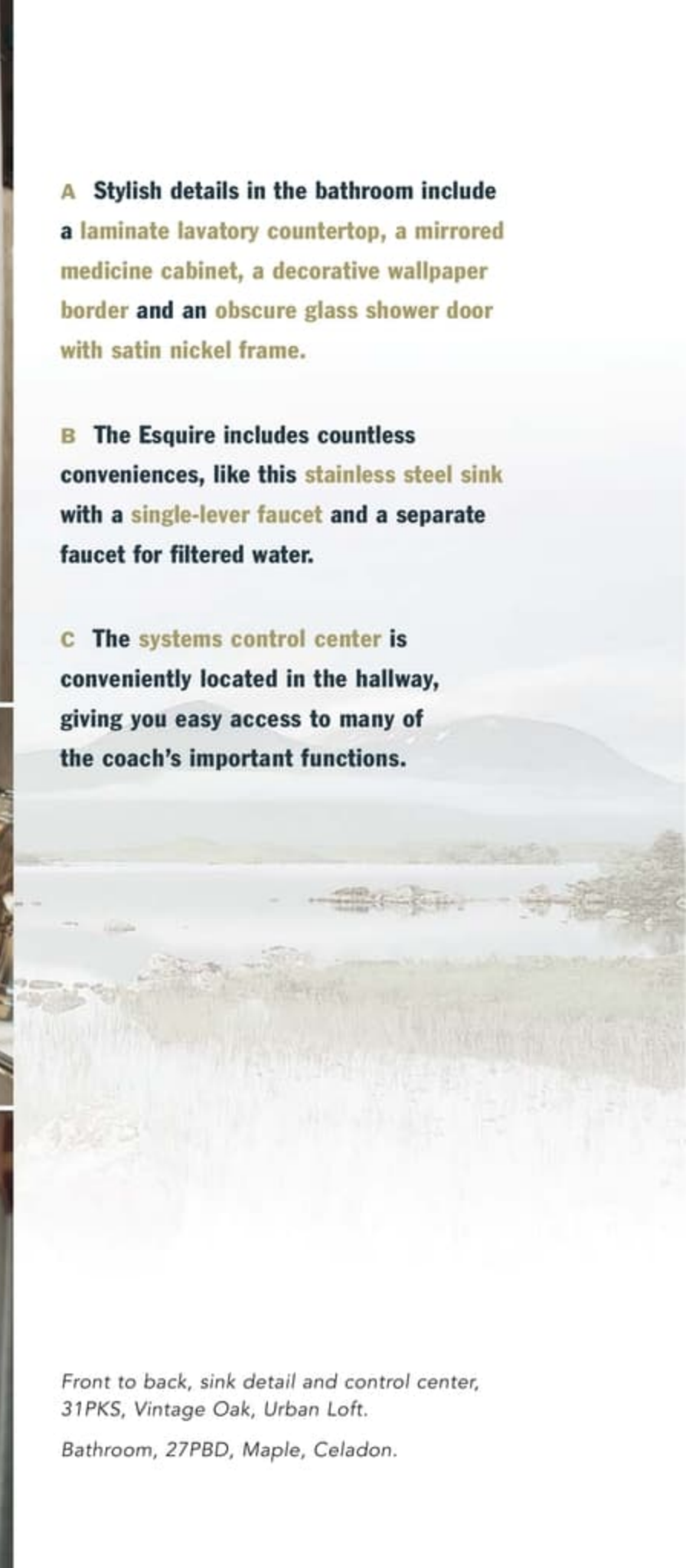
Dreams. They're the way we write the story of our lives. Some are serious. Like raising kids or building a business. Others are pure fun. Like the dream you have early on a summer morning, sipping coffee and working on your life's next chapter. It's about making big plans and changing them on a whim. Or even better, following your heart without any plans at all. Yes, it's the dream of a lifetime. And with Monaco's legendary quality, reliability and innovation, we can make it all come true.



MONACO

DRIVING YOUR DREAM.™





A Stylish details in the bathroom include a laminate lavatory countertop, a mirrored medicine cabinet, a decorative wallpaper border and an obscure glass shower door with satin nickel frame.

B The Esquire includes countless conveniences, like this stainless steel sink with a single-lever faucet and a separate faucet for filtered water.

C The systems control center is conveniently located in the hallway, giving you easy access to many of the coach's important functions.

Front to back, sink detail and control center, 31PKS, Vintage Oak, Urban Loft.

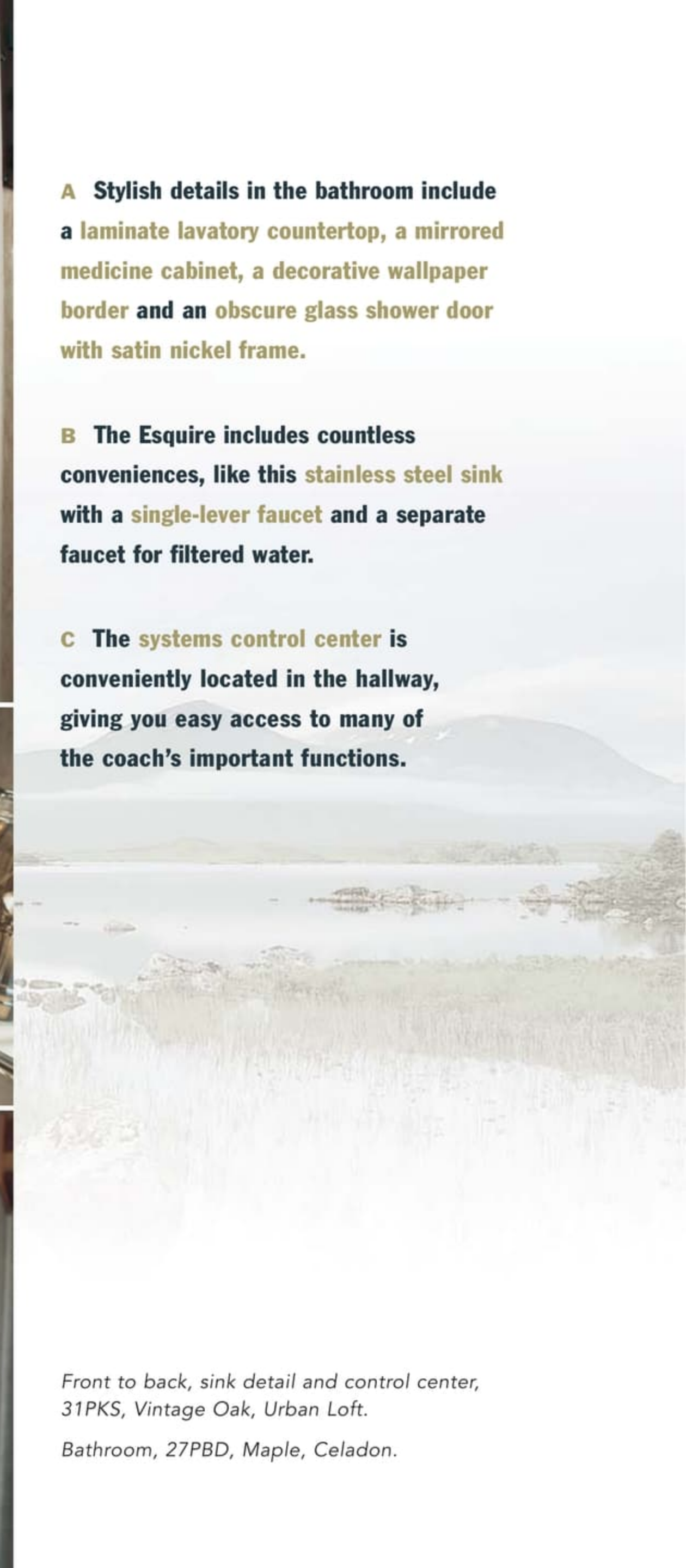
Bathroom, 27PBD, Maple, Celadon.



A Stylish details in the bathroom include a laminate lavatory countertop, a mirrored medicine cabinet, a decorative wallpaper border and an obscure glass shower door with satin nickel frame.

B The Esquire includes countless conveniences, like this stainless steel sink with a single-lever faucet and a separate faucet for filtered water.

C The systems control center is conveniently located in the hallway, giving you easy access to many of the coach's important functions.

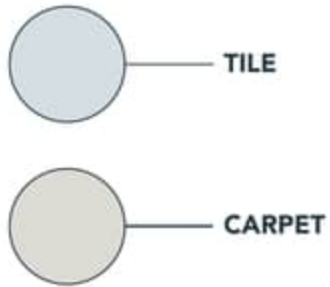


Front to back, sink detail and control center, 31PKS, Vintage Oak, Urban Loft.

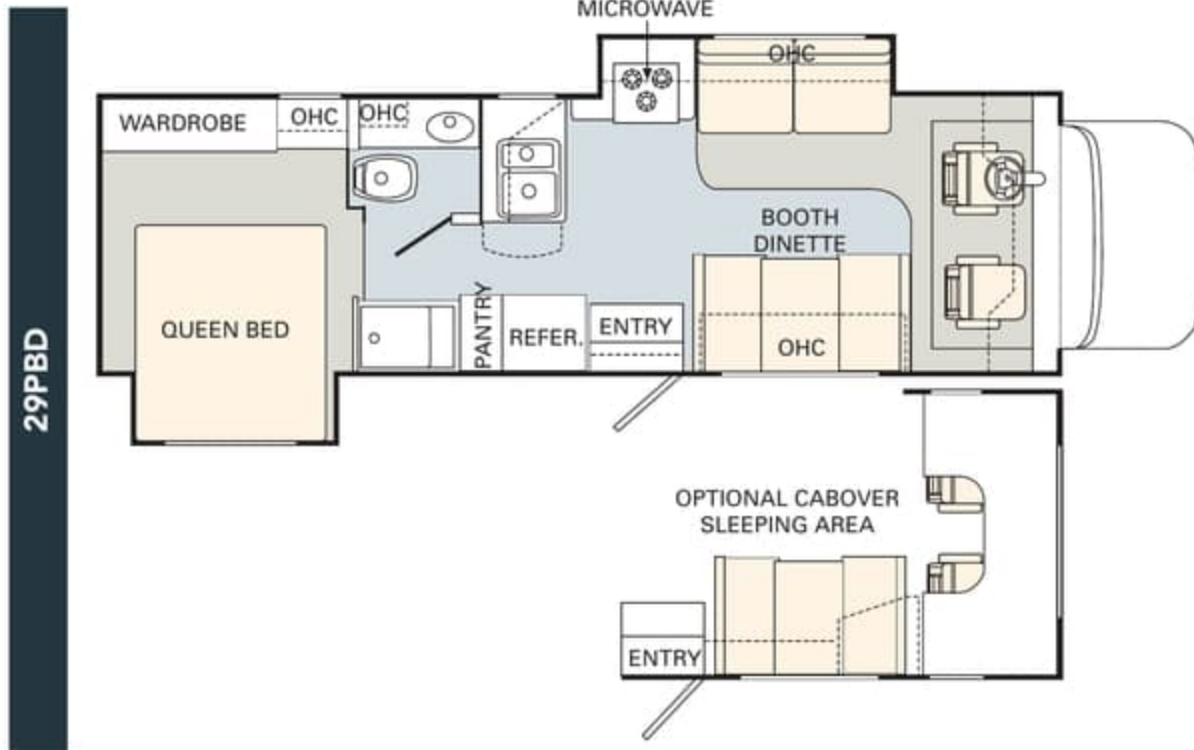
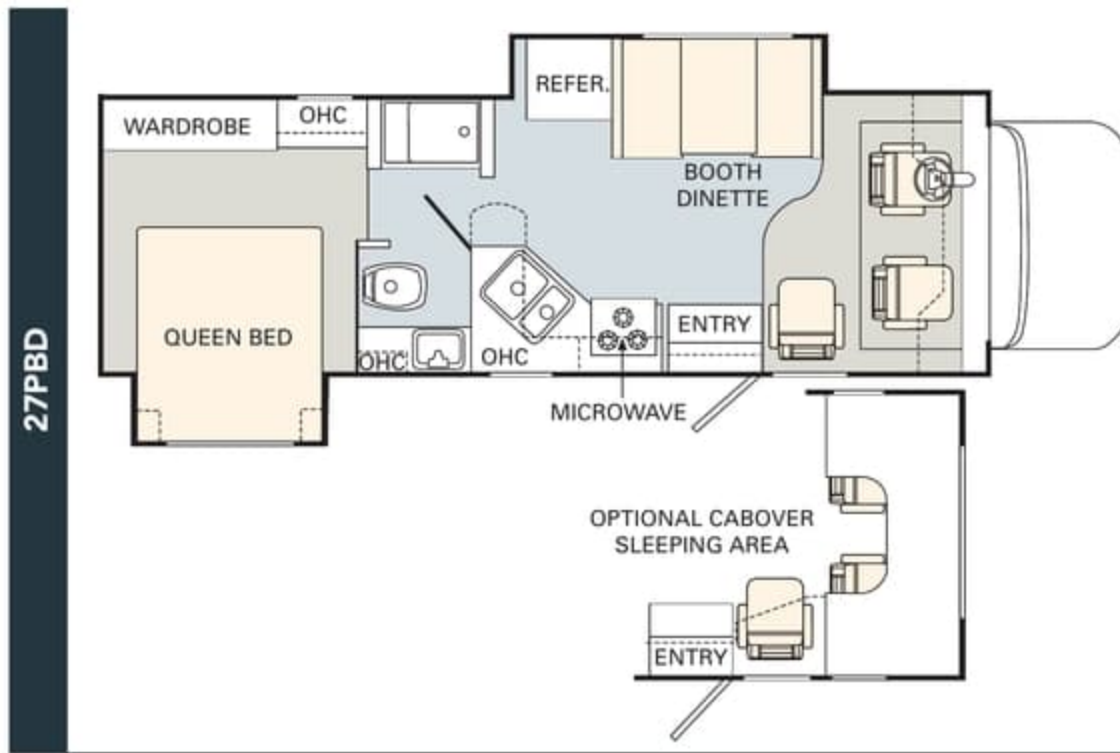
Bathroom, 27PBD, Maple, Celadon.

05 floorplans

No other manufacturer gives you as many innovative floorplan choices as Monaco. The 2005 Esquire offers you a selection that ranges from 27' to 31'.

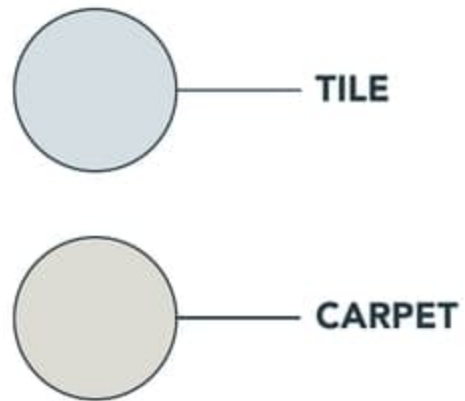


Find all the latest product news and updates online: monacocoach.com

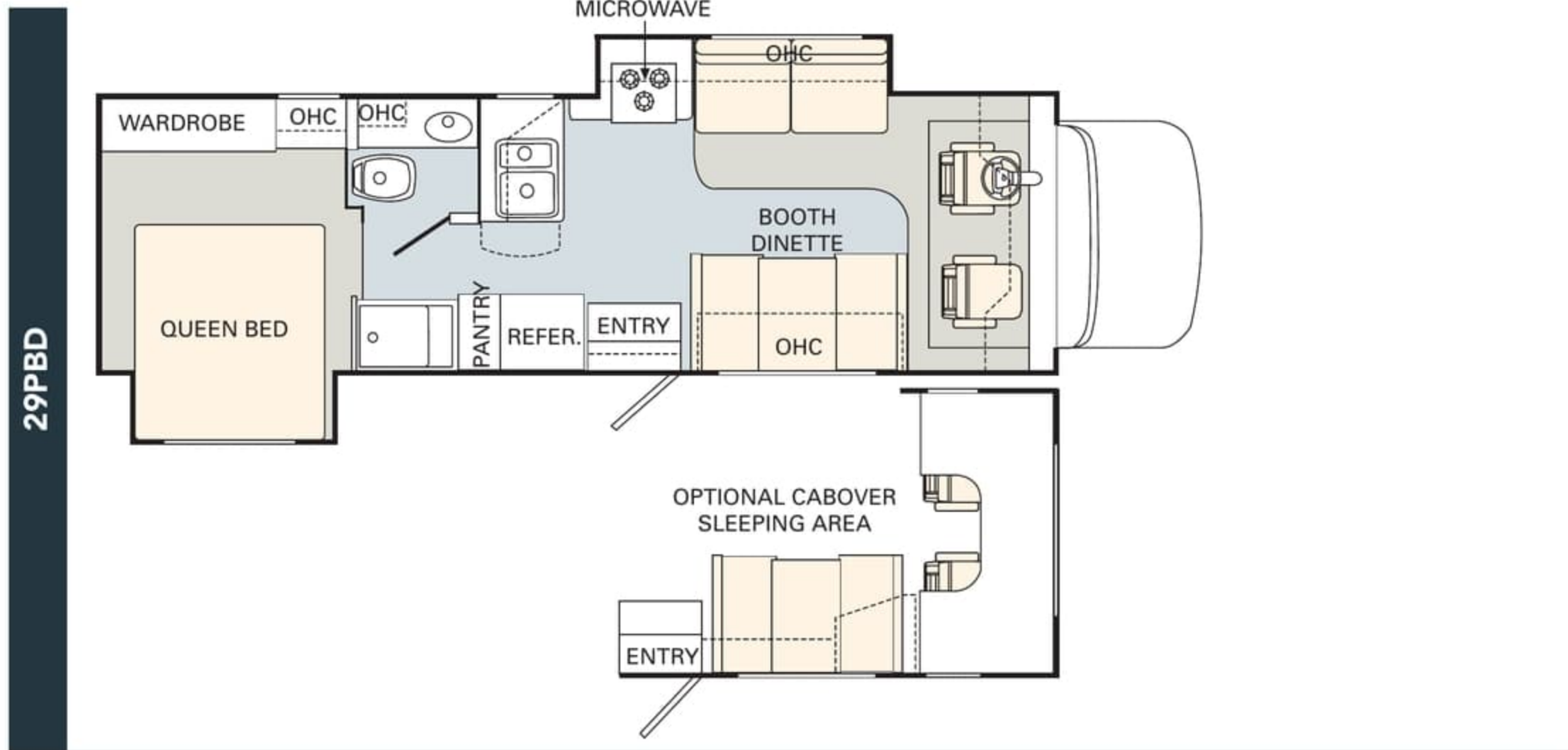
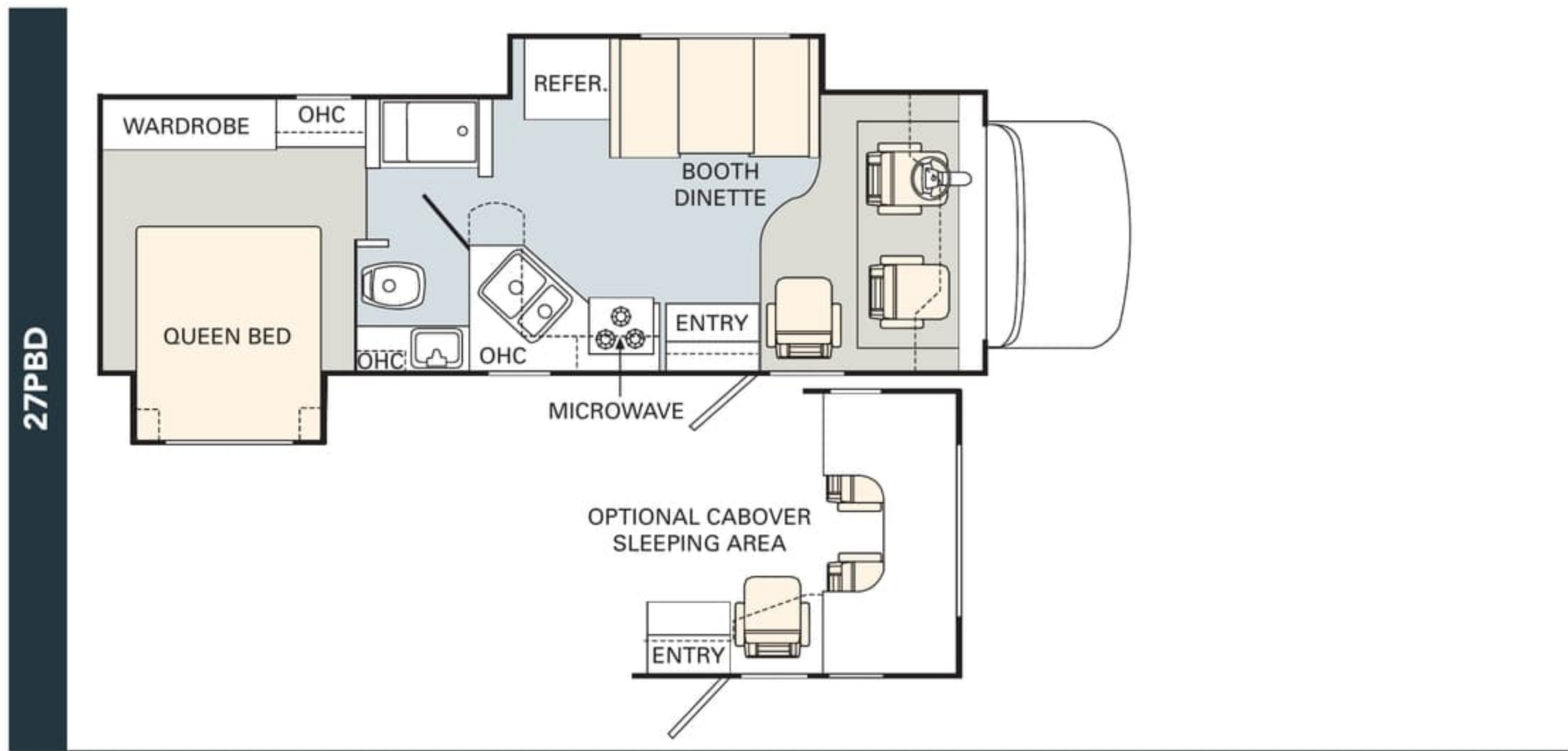


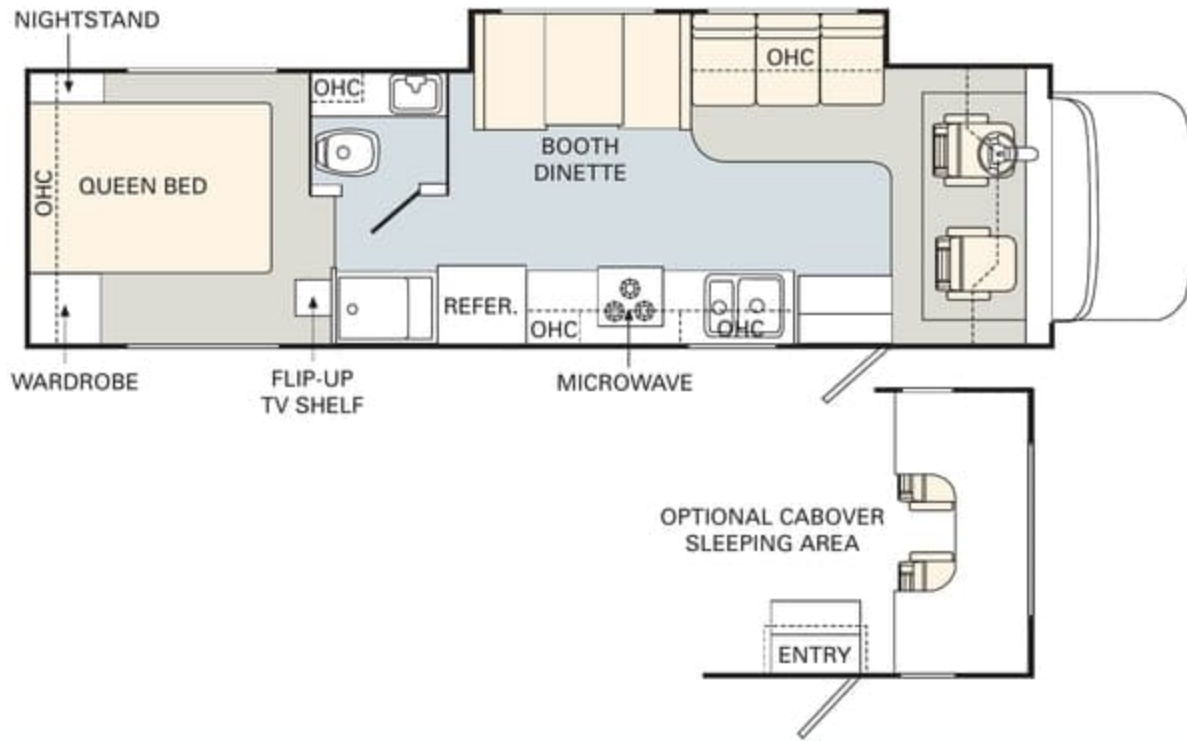
05 floorplans

No other manufacturer gives you as many innovative floorplan choices as Monaco. The 2005 Esquire offers you a selection that ranges from 27' to 31'.

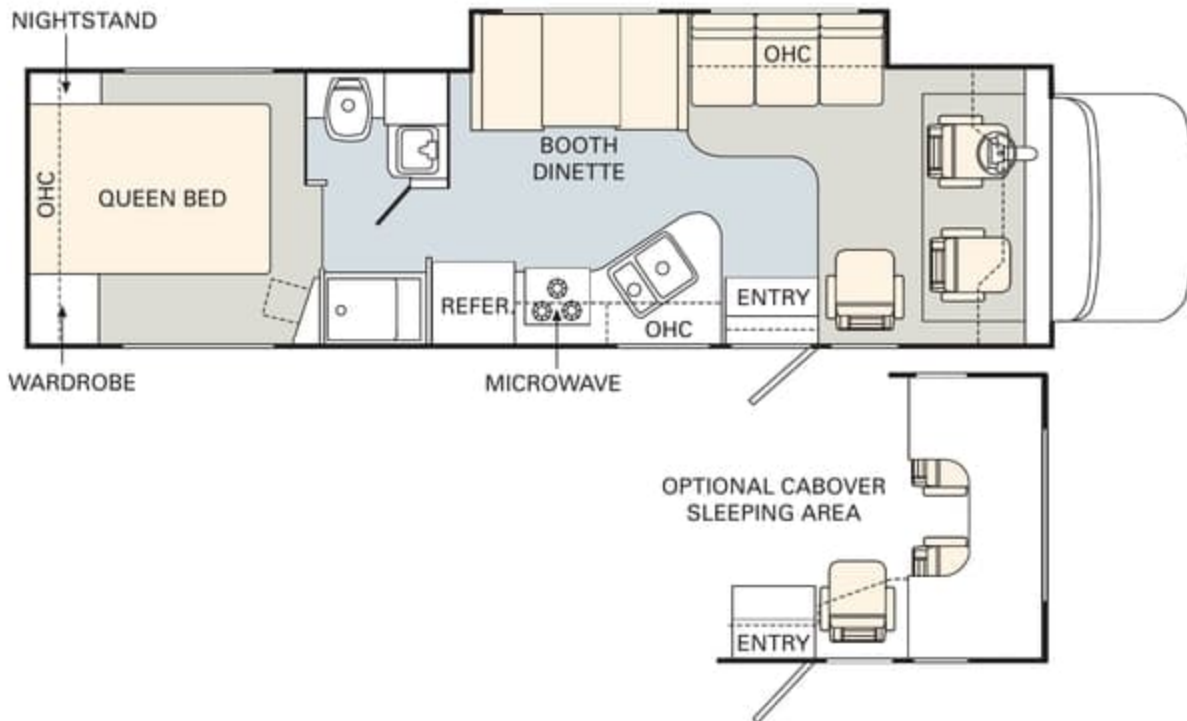


Find all the latest product news and updates online:
monacocoach.com



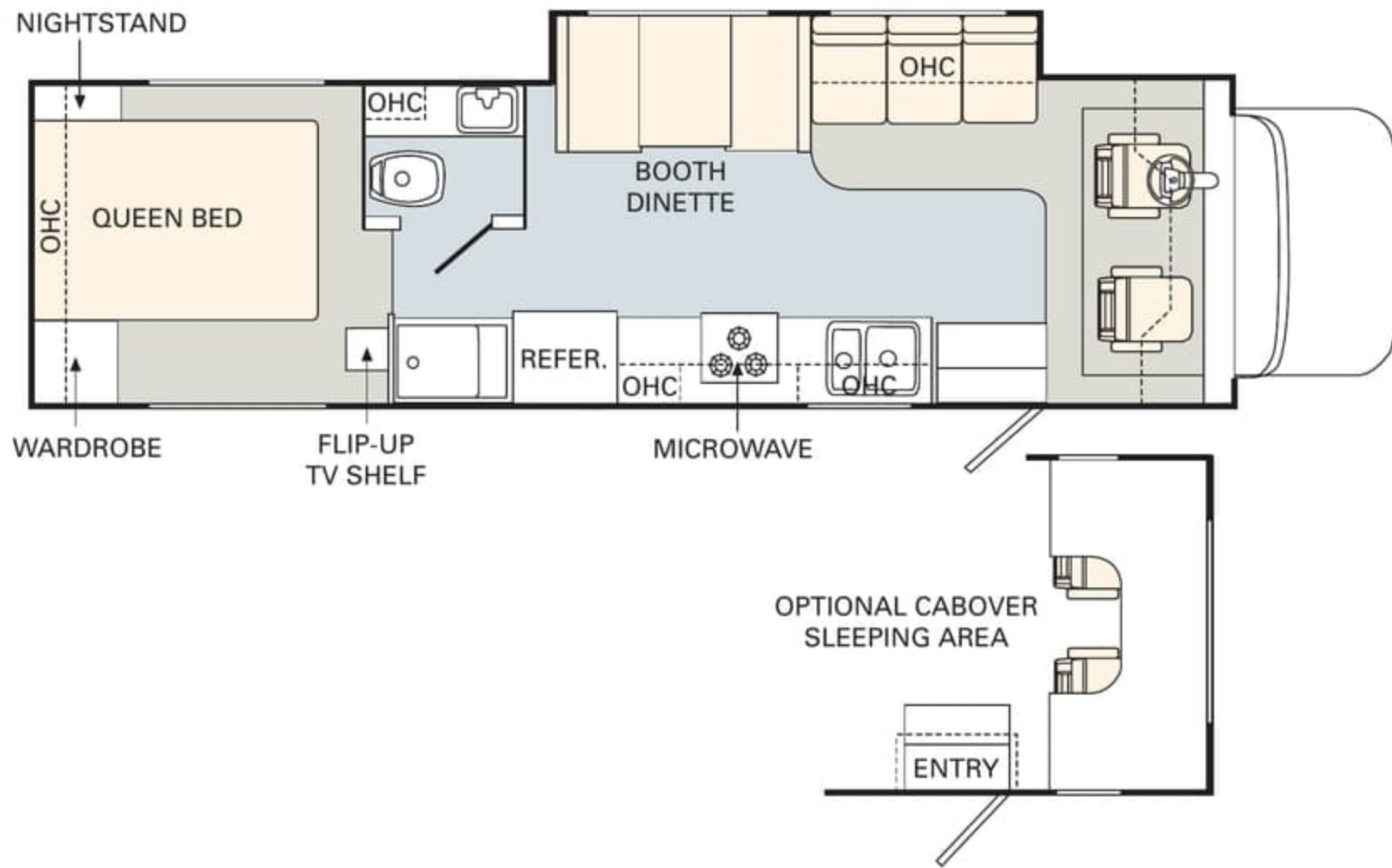


31PKS

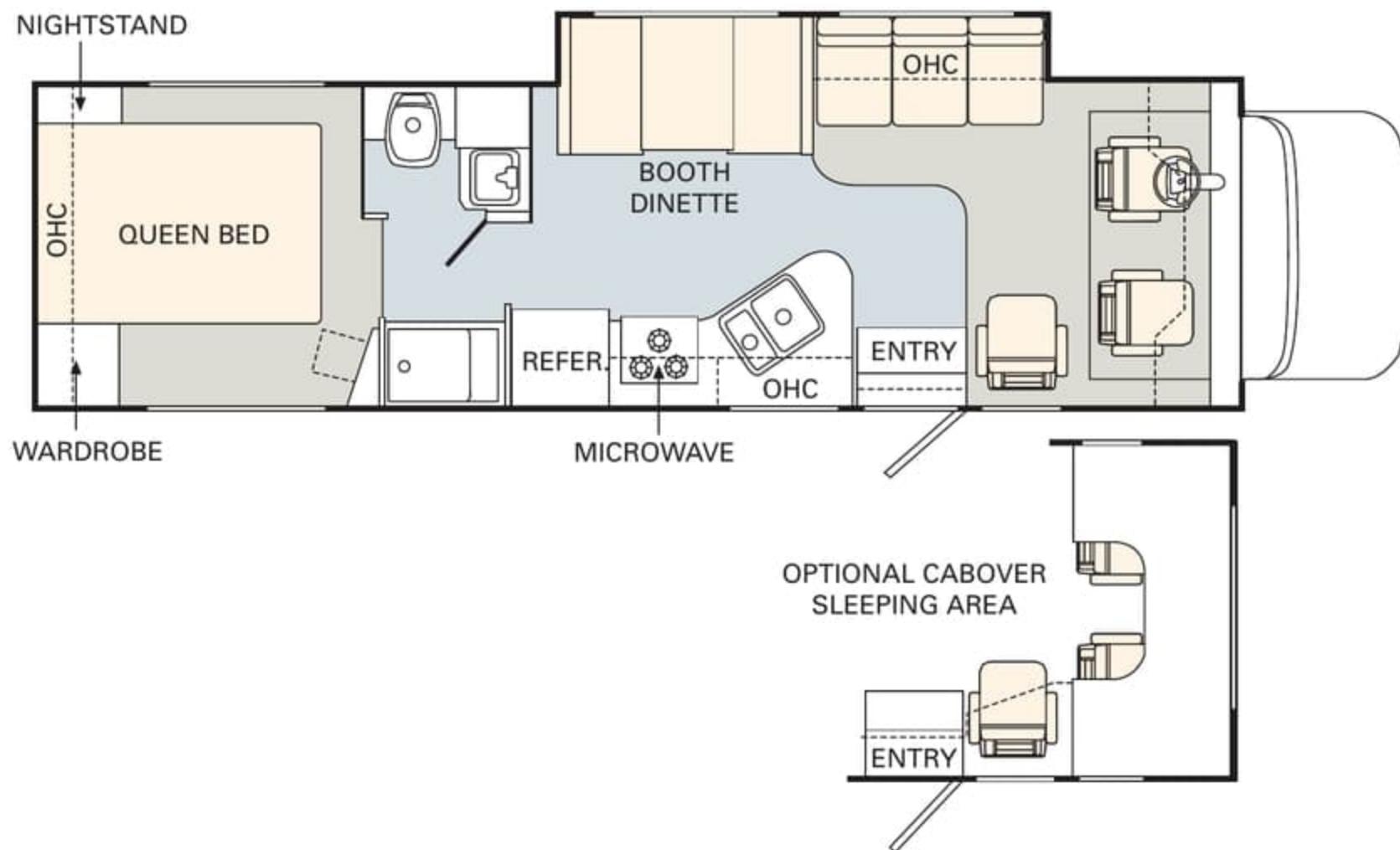


31PBS





31PKS



31PBS



05 specifications and standards & options

	WEIGHT RATINGS (LBS.)				MEASUREMENTS						TANK CAPACITY (GAL.)¹					
	Gross vehicle	Gross combined ²	Front gross axle	Rear gross axle	Wheelbase	Overall length	Overall height (with A/C)	Interior height	Interior width	Exterior width	Water heater	Gray tank	Black tank	Fresh tank	LP tank ³	Fuel tank
27PBD	14,050	19,050	4,600	9,450	192"	28' 6"	11' 4"	6' 6"	94 1/2"	100 1/2"	6	40	40	32	18	55
29PBD	14,050	19,050	4,600	9,450	198"	29' 7"	11' 4"	6' 6"	94 1/2"	100 1/2"	6	40	40	35	18	55
31PKS	14,050	19,050	4,600	9,450	208"	31' 7"	11' 4"	6' 6"	94 1/2"	100 1/2"	6	40	40	35	18	55
31PBS	14,050	19,050	4,600	9,450	208"	31' 7"	11' 4"	6' 6"	94 1/2"	100 1/2"	6	40	40	35	18	55

1 Towing capacity is limited by GCWR; your vehicle's towing capacity is the difference between the GCWR and the actual vehicle weight, including all water, fuel, passengers and cargo. Your towed vehicle should be equipped with auxiliary brakes if the weight of the towed vehicle exceeds 1,000 lbs. Consult your owner's manual for further towing information.

2 Variances in the fabrication and installation of the tanks may cause the actual "usable capacity" to be greater or less than the capacities designated above.

3 Actual filled LP capacity is 80% of listing due to safety shut-off required on tank.

The actual overall length of the recreational vehicle may differ from that indicated in the brochure due to variances in the manufacturing process and/or installed components. The actual length may be greater or less than that indicated. Due to the large variety of options and floorplan arrangements available to our customers, actual weights for each unit can differ significantly. Monaco Coach provides a weight sticker on each unit we produce which includes that unit's tank capacities and approximate weight. Consult your local Monaco Coach dealer for unit availability and further information. The information printed in this brochure reflects product design, fabrication, and component parts at the date of printing. The manufacturer reserves the right, at any time, to make changes in product design or material or component specifications as its sole option, without notice. This includes the substitution of components of a different brand or trade name which will result in comparable performance. All information printed in this brochure is subject to change after the date of printing. Some features shown or mentioned in this brochure are optional and may only be available in selected floorplans. Photographs may show props or decorations that are not standard equipment on Monaco Coach models. Monaco Coach, the Monaco logo and its design, are registered trademarks. All other products and company names are trademarks and/or registered trademarks of their respective holders. While the color of the motorhome's exterior and the interior fabrics depicted in this sales brochure are fair and reasonable depictions, the colors depicted may not be an exact match of the actual colors because of the variances in photo-processing and variances caused by inserting the photographs within the sales brochure. Due to product improvements, changes during the model year and/or transcription errors that may occur, information represented within this brochure may not be accurate at the time of your purchase. If certain information is significant to your purchasing decision, please confirm the information with your dealer prior to submitting your order.

05 specifications and standards & options

	WEIGHT RATINGS (LBS.) ¹				MEASUREMENTS						TANK CAPACITY (GAL.) ²					
	Gross vehicle	Gross combined ¹	Front gross axle	Rear gross axle	Wheelbase	Overall length	Overall height (with A/C)	Interior height	Interior width	Exterior width	Water heater	Gray tank	Black tank	Fresh tank	LP tank ³	Fuel tank
27PBD	14,050	19,050	4,600	9,450	192"	28' 6"	11' 4"	6' 6"	94 1/2"	100 1/2"	6	40	40	32	18	55
29PBD	14,050	19,050	4,600	9,450	198"	29' 7"	11' 4"	6' 6"	94 1/2"	100 1/2"	6	40	40	35	18	55
31PKS	14,050	19,050	4,600	9,450	208"	31' 7"	11' 4"	6' 6"	94 1/2"	100 1/2"	6	40	40	35	18	55
31PBS	14,050	19,050	4,600	9,450	208"	31' 7"	11' 4"	6' 6"	94 1/2"	100 1/2"	6	40	40	35	18	55

1 Towing capacity is limited by GCWR; your vehicle's towing capacity is the difference between the GCWR and the actual vehicle weight, including all water, fuel, passengers and cargo. Your towed vehicle should be equipped with auxiliary brakes if the weight of the towed vehicle exceeds 1,000 lbs. Consult your owner's manual for further towing information.

2 Variances in the fabrication and installation of the tanks may cause the actual "usable capacity" to be greater or less than the capacities designated above.

3 Actual filled LP capacity is 80% of listing due to safety shut-off required on tank.

The actual overall length of the recreational vehicle may differ from that indicated in the brochure due to variances in the manufacturing process and/or installed components. The actual length may be greater or less than that indicated. Due to the large variety of options and floorplan arrangements available to our customers, actual weights for each unit can differ significantly. Monaco Coach provides a weight sticker on each unit we produce which includes that unit's tank capacities and approximate weight. Consult your local Monaco Coach dealer for unit availability and further information. The information printed in this brochure reflects product design, fabrication, and component parts at the date of printing. The manufacturer reserves the right, at any time, to make changes in product design or material or component specifications as its sole option, without notice. This includes the substitution of components of a different brand or trade name which will result in comparable performance. All information printed in this brochure is subject to change after the date of printing. Some features shown or mentioned in this brochure are optional and may only be available in selected floorplans. Photographs may show props or decorations that are not standard equipment on Monaco Coach models. Monaco Coach, the Monaco logo and its design, are registered trademarks. All other products and company names are trademarks and/or registered trademarks of their respective holders. While the color of the motorhome's exterior and the interior fabrics depicted in this sales brochure are fair and reasonable depictions, the colors depicted may not be an exact match of the actual colors because of the variances in photo-processing and variances caused by inserting the photographs within the sales brochure. Due to product improvements, changes during the model year and/or transcription errors that may occur, information represented within this brochure may not be accurate at the time of your purchase. If certain information is significant to your purchasing decision, please confirm the information with your dealer prior to submitting your order.

BODY CONSTRUCTION

Alumaframe® Superstructure
Peaked Aluminum Roof with Fiberglass Insulation
Smooth Aluminum Sidewalls
Fiberglass Front Cap with Radius Corners to Roof Line
ABS Radius Rear Cap Transition Application to Roof Line and Bumper
Aluminum Framed Floor on Steel Trusses
Laminated Structurwood™ Flooring
Interior Paneling with 3/4" Insulation
Foam Insulated Floor Framing with 3-Ply Underbelly
Streamlined Baggage Doors with Integrated Single Handle Latches
One-Piece Polyethylene Storage Compartment, Pass-Through Storage
Wheel Mud Flaps
Painted Mask and Skirt with Vinyl Exterior Graphics
Rear Ladder
Interior Rubber Entry Step
Exterior Single Entry Steps
Fiberglass Running Boards
Undercoating

OPTIONS

Smooth Gel Coat Fiberglass Exterior Walls

CHASSIS/ENGINE/SUSPENSION

Ford E450 Chassis
Electronic Fuel Injection Gasoline Engine 6.8L V10
Cubic Inch Displacement 415"/6.8L
4-Speed Automatic Transmission with Overdrive
Fuel Tank Capacity 55 Gallon
130 Amp Alternator
Rear Axle Ratio 4.56:1
Radial Tires
Chrome Wheel Covers
Rear Multi-Leaf Spring Suspension
Air Bag System
ABS Brake System
5,000 Lb. Hitch Receiver with Connector
Dash Heating and Air Conditioner System with Defroster
One 12V Chassis Battery
Auxiliary Start Circuit

OPTIONS

Stainless Steel Wheel Simulators

COCKPIT

CD Player/Radio with Six Speakers
Multi-Positioned Sunvisors
Instrument Panel Appliqué
Intermittent Windshield Wipers
Tilt Steering Wheel
Cruise Control
Power Steering
Electric Automotive Horn
Engine Cover Drink Tray
White Power Heated Remote Mirrors
Vinyl with Fabric Two-Tone Pilot and Co-Pilot Recliner Seats
Carpeted Driver and Passenger Floor Mats

OPTIONS

Six-Way Power Pilot Seat
Six-Way Power Co-Pilot Seat
Rear Vision System
CB Prep
Cassette Radio Option includes AM/FM Tuner, CD Player, Weather Band
Cabover Sleeping Area with 19" TV and DVD Player (N/C Option)

BODY CONSTRUCTION

Alumaframe® Superstructure
Peaked Aluminum Roof with Fiberglass Insulation
Smooth Aluminum Sidewalls
Fiberglass Front Cap with Radius Corners to Roof Line
ABS Radius Rear Cap Transition Application to Roof Line and Bumper
Aluminum Framed Floor on Steel Trusses
Laminated Structurwood™ Flooring
Interior Paneling with 3/4" Insulation
Foam Insulated Floor Framing with 3-Ply Underbelly
Streamlined Baggage Doors with Integrated Single Handle Latches
One-Piece Polyethylene Storage Compartment, Pass-Through Storage
Wheel Mud Flaps
Painted Mask and Skirt with Vinyl Exterior Graphics
Rear Ladder
Interior Rubber Entry Step
Exterior Single Entry Steps
Fiberglass Running Boards
Undercoating

OPTIONS

Smooth Gel Coat Fiberglass Exterior Walls

CHASSIS/ENGINE/SUSPENSION

Ford E450 Chassis
Electronic Fuel Injection Gasoline Engine 6.8L V10
Cubic Inch Displacement 415"/6.8L
4-Speed Automatic Transmission with Overdrive
Fuel Tank Capacity 55 Gallon
130 Amp Alternator
Rear Axle Ratio 4.56:1
Radial Tires
Chrome Wheel Covers
Rear Multi-Leaf Spring Suspension
Air Bag System
ABS Brake System
5,000 Lb. Hitch Receiver with Connector
Dash Heating and Air Conditioner System with Defroster
One 12V Chassis Battery
Auxiliary Start Circuit

OPTIONS

Stainless Steel Wheel Simulators

COCKPIT

CD Player/Radio with Six Speakers
Multi-Positioned Sunvisors
Instrument Panel Appliqué
Intermittent Windshield Wipers
Tilt Steering Wheel
Cruise Control
Power Steering
Electric Automotive Horn
Engine Cover Drink Tray
White Power Heated Remote Mirrors
Vinyl with Fabric Two-Tone Pilot and Co-Pilot Recliner Seats
Carpeted Driver and Passenger Floor Mats

OPTIONS

Six-Way Power Pilot Seat
Six-Way Power Co-Pilot Seat
Rear Vision System
CB Prep
Cassette Radio Option includes AM/FM Tuner, CD Player, Weather Band
Cabover Sleeping Area with 19" TV and DVD Player (N/C Option)

APPLIANCES & ACCESSORIES

Large Double-Door Refrigerator
High-Output 3-Burner Range with Oven
Spacesaver Microwave with Touch Control
Front Entertainment Center with 25" TV, DVD Player and Wraparound Cabinets
TV Antenna
VCR Prep and Video Control Box with Booster
Exterior Hookups for DSS Dish and Cable
Interior Cable TV Hookup and Telephone Jacks

OPTIONS

Large Double-Door Refrigerator with Ice Maker
High-Output 3-Burner Cooktop with Drawers
Spacesaver Convection Microwave with Touch Control
VCR IPO DVD Player
13" Color TV with Remote Control in Bedroom
Built-In Radio with CD Player over Dinette (29PBD)
Curbside Living Area (27PBD, 31PBS, 31PKS)
Satellite Dish Prep
Exterior Entertainment Center, CD Player Radio with Two Speakers (N/A: 29PBD with Freestanding Dinette Option)
Outdoor Barbecue Grill

INTERIOR

Maple Cabinetry
Raised Panel Cabinet Doors on Overhead Cabinets, Flat Panel Doors on Base Cabinets and Wardrobes
Woven Raffia Insert on All Overhead Cabinet Doors Forward of the Bath Walls
Cabinet End Panels
Woven Raffia Inserts on Refrigerator Door
Decorative Wall Board
Wallpaper Border Kitchen, Bath and Bedroom Walls
Self-Supporting Top-Hinged Overhead Storage Doors and Positive Catches on All Other Doors
Heavy-Duty Ball Bearing Drawer Guides
Wood Cabinet Drawer Boxes
Wood Interior Grab Handle on Cabinet at Entry Door
Satin Nickel Cabinetry Hardware and Bath Accessories
Integrated Cup Holder in Slide-Out next to Sofa
Laminate Kitchen Countertop with Laminate Perm-Edge, Stainless Steel Sink, Brushed Nickel Faucet and Two Sink Covers
Kitchen Countertop Extensions (27PBD, 29PBD)
Kitchen Countertop End Splash (29PBD)
Laminate Lavatory Countertop with Laminate Perm-Edge
All Other Countertops Laminated with Perm-Edge
Kitchen Overhead Cabinets with Adjustable Shelf
Kitchen Pantry with Adjustable Shelves next to Refrigerator (29PBD)
Armstrong Linoleum Flooring in Kitchen

Upgraded Nylon Carpeting with Pad in Living Area and Bedroom
Soft Touch Padded Vinyl Ceiling
Wood Slide-Out Fascia with Fabric Inserts
Arched Beveled Mirror in Living Area, Wainscoting and Chair Rail Accent under Mirrors Living Area Location (N/A: 29PBD)
Decorative Picture on Refrigerator Wall (29PBD)
Bath Door with Accent Trim on Hallway Side
Wood Trim for Bath Door Opening Hallway Side
Accent Crown Molding in Bedroom and Living Area on All Open Walls
Medicine Cabinet with Shelves
Bathroom Lavatory Base Mirror with Wood Frame
Towel Rack on Back of Bath Door
Towel Bar in Bathroom
Towel Ring in Bath Area
Wood Framed Accent Mirror on Rear Wall with Chair Rail and Wainscoting Accent under Mirrors (27PBD, 29PBD)
Mirrored Wardrobe Doors (27PBD, 29PBD)
Bedspread with One Decorative Pillow
Fabric Headboard (N/A with Rear Window or Twin Beds Option) (31PKS, 31PBS)
Mini Blinds and Valances Throughout
Soil Repellant on Fabric, Teflon® Fabric Protection
Fabric Valance above Entry Door with Satin Nickel Clock

OPTIONS

Decors: Urban Loft, Celadon, Birch Bark, Blackwood Manor
Wood Choice: Autumn Cherry and Vintage Oak (N/C Option)
Day/Night Pleated Shades in Living Area and Bedroom
Roll-Out Pantry next to Refrigerator with 4 Baskets (29PBD)

APPLIANCES & ACCESSORIES

Large Double-Door Refrigerator
High-Output 3-Burner Range with Oven
Spacesaver Microwave with Touch Control
Front Entertainment Center with 25" TV, DVD Player and Wraparound Cabinets
TV Antenna
VCR Prep and Video Control Box with Booster
Exterior Hookups for DSS Dish and Cable
Interior Cable TV Hookup and Telephone Jacks

OPTIONS

Large Double-Door Refrigerator with Ice Maker
High-Output 3-Burner Cooktop with Drawers
Spacesaver Convection Microwave with Touch Control
VCR IPO DVD Player
13" Color TV with Remote Control in Bedroom
Built-In Radio with CD Player over Dinette (29PBD)
Curbside Living Area (27PBD, 31PBS, 31PKS)
Satellite Dish Prep
Exterior Entertainment Center, CD Player Radio with Two Speakers (N/A: 29PBD with Freestanding Dinette Option)
Outdoor Barbecue Grill

INTERIOR

Maple Cabinetry
Raised Panel Cabinet Doors on Overhead Cabinets, Flat Panel Doors on Base Cabinets and Wardrobes
Woven Raffia Insert on All Overhead Cabinet Doors Forward of the Bath Walls
Cabinet End Panels
Woven Raffia Inserts on Refrigerator Door
Decorative Wall Board
Wallpaper Border Kitchen, Bath and Bedroom Walls
Self-Supporting Top-Hinged Overhead Storage Doors and Positive Catches on All Other Doors
Heavy-Duty Ball Bearing Drawer Guides
Wood Cabinet Drawer Boxes
Wood Interior Grab Handle on Cabinet at Entry Door
Satin Nickel Cabinetry Hardware and Bath Accessories
Integrated Cup Holder in Slide-Out next to Sofa
Laminate Kitchen Countertop with Laminate Perm-Edge, Stainless Steel Sink, Brushed Nickel Faucet and Two Sink Covers
Kitchen Countertop Extensions (27PBD, 29PBD)
Kitchen Countertop End Splash (29PBD)
Laminate Lavatory Countertop with Laminate Perm-Edge
All Other Countertops Laminated with Perm-Edge
Kitchen Overhead Cabinets with Adjustable Shelf
Kitchen Pantry with Adjustable Shelves next to Refrigerator (29PBD)
Armstrong Linoleum Flooring in Kitchen

Upgraded Nylon Carpeting with Pad in Living Area and Bedroom
Soft Touch Padded Vinyl Ceiling
Wood Slide-Out Fascia with Fabric Inserts
Arched Beveled Mirror in Living Area, Wainscoting and Chair Rail Accent under Mirrors Living Area Location (N/A: 29PBD)
Decorative Picture on Refrigerator Wall (29PBD)
Bath Door with Accent Trim on Hallway Side
Wood Trim for Bath Door Opening Hallway Side
Accent Crown Molding in Bedroom and Living Area on All Open Walls
Medicine Cabinet with Shelves
Bathroom Lavatory Base Mirror with Wood Frame
Towel Rack on Back of Bath Door
Towel Bar in Bathroom
Towel Ring in Bath Area
Wood Framed Accent Mirror on Rear Wall with Chair Rail and Wainscoting Accent under Mirrors (27PBD, 29PBD)
Mirrored Wardrobe Doors (27PBD, 29PBD)
Bedsprad with One Decorative Pillow
Fabric Headboard (N/A with Rear Window or Twin Beds Option) (31PKS, 31PBS)
Mini Blinds and Valances Throughout
Soil Repellant on Fabric, Teflon® Fabric Protection
Fabric Valance above Entry Door with Satin Nickel Clock

OPTIONS

Decors: Urban Loft, Celadon, Birch Bark, Blackwood Manor
Wood Choice: Autumn Cherry and Vintage Oak (N/C Option)
Day/Night Pleated Shades in Living Area and Bedroom
Roll-Out Pantry next to Refrigerator with 4 Baskets (29PBD)

FURNITURE

Queen Bed
Arched Back Wood Booth Dinette with Side-Sliding Table Top
Jackknife Sleeper Sofa with Two Pillows (N/A: 27PBD)
Fabric Barrel Chair (27PBD, 31PBS)

OPTIONS

Twin Beds (N/A with Rear Window Option) (31PKS, 31PBS)
Fabric Sofa with Fold Down Coffee Table ILO Dinette Option (27PBD)
Freestanding Dinette with Two Freestanding Chairs and Two Folding Chairs

PLUMBING & LP SYSTEMS

Kitchen Stainless Steel Sink with Single Lever Brushed Nickel Faucet
Separate Satin Nickel Faucet for Filtered Water
Bath Lavatory Faucet Double Handle
Demand Water System and Water Pump
6 Gallon LP Gas/Electric Water Heater with Electronic Ignition
Winterization Valving System
Water Heater Bypass Valve
Toilet with Sprayer
No-Fuss Flush Holding Tank Rinsing System
Shower/Step Tub
Shower Light
Satin Nickel Framed Shower Door with Obscure Glass

ELECTRICAL SYSTEMS & LIGHTS

30 Amp 120V Distribution Panel and Cord
60 Amp Electronic 12V Power Converter
Generator Prep
One 12V House Battery
Battery Disconnect Switches
12V and 110V Outlet in Cockpit Area
Porch Light and Exterior Step Light on Same Switch
Exterior Power Entry Step with Light
Water Pump Switch in Service Bay Area and Bath
Lights in Outside Storage Compartments
Patio Receptacle
Computer Hook-Up with Phone Jack in Dinette Area
Pilot and Co-Pilot Map Lights
Systems Control Center In Hallway
Fluorescent Ceiling Lights throughout, except Pancake Light Bath Ceiling
Fluorescent Ceiling Lights throughout, except inside Bath
Decorative Wood Framed Galley Ceiling Fluorescent Light
Decorative Satin Nickel Lighting Living Room Wall Light, Dinette Overhead and Bedroom Wall Lights
Decorative Satin Nickel New Style Decorative Bath Lavatory Light
Satin Nickel Bullet Lights on Bottom of Living Area Overheads
12V Incandescent Lights under Kitchen and Bedroom Overhead Cabinets

OPTIONS

140 Watt Inverter
Onan® 4.0 kW Generator

HEATING, VENTS & AIR CONDITIONING

One 15M BTU Air Conditioner with Ducted Air and Analog Wall Thermostat, Living Area or Kitchen Location Depending on Floorplan Layout
31M BTU Electronic Ignition Furnace
Above-Floor Ducted Heating System
Non-Powered Roof Vent, Bedroom
Non-Powered Roof Vent, Living Area or Kitchen Location Depending on Floorplan Layout
12V Roof Vent in Bath
Metal Air Return Grill Furnace Satin Nickel Finish

OPTIONS

One 15M BTU Air Conditioner with Heat Pump and Ducted Air and Analog Wall Thermostat, Living Area or Kitchen Location Depending on Floorplan Layout
12V Wet Bay Heater
Fantastic 12V Attic Fan Living Area or Kitchen Location Depending on Floorplan Layout

WINDOWS, DOORS & AWNINGS

Tinted Single Pane Windows
Radius Entrance Door with Obscure Glass, Screen Door and Anti-Skid Steps
Opera Window at Barrel Chair Location (27PBD, 31PBS)
Exterior Entry Assist Handle
Awning Rail
Slide-Out Awnings Living Area and Bedroom
Protecta Glaze Tinted Plexiglas® Skylight in Bathroom

OPTIONS

Rear Window, Deletes Headboard (N/A with Twin Beds Option) (31PKS, 31PBS)
Vinyl Patio Awning with White Arms

SAFETY

Fire Extinguisher
Deadbolt Lock on Entrance Door
120V GFI Protected Circuit
LP Gas Detector
Smoke Detector
Carbon Monoxide Detector
Pilot and Co-Pilot Three-Point Seat Belts
Egress Windows

FURNITURE

Queen Bed
Arched Back Wood Booth Dinette with Side-Sliding Table Top
Jackknife Sleeper Sofa with Two Pillows (N/A: 27PBD)
Fabric Barrel Chair (27PBD, 31PBS)

OPTIONS

Twin Beds (N/A with Rear Window Option) (31PKS, 31PBS)
Fabric Sofa with Fold Down Coffee Table ILO Dinette Option (27PBD)
Freestanding Dinette with Two Freestanding Chairs and Two Folding Chairs

PLUMBING & LP SYSTEMS

Kitchen Stainless Steel Sink with Single Lever Brushed Nickel Faucet
Separate Satin Nickel Faucet for Filtered Water
Bath Lavatory Faucet Double Handle
Demand Water System and Water Pump
6 Gallon LP Gas/Electric Water Heater with Electronic Ignition
Winterization Valving System
Water Heater Bypass Valve
Toilet with Sprayer
No-Fuss Flush Holding Tank Rinsing System
Shower/Step Tub
Shower Light
Satin Nickel Framed Shower Door with Obscure Glass

ELECTRICAL SYSTEMS & LIGHTS

30 Amp 120V Distribution Panel and Cord
60 Amp Electronic 12V Power Converter
Generator Prep
One 12V House Battery
Battery Disconnect Switches
12V and 110V Outlet in Cockpit Area
Porch Light and Exterior Step Light on Same Switch
Exterior Power Entry Step with Light
Water Pump Switch in Service Bay Area and Bath
Lights in Outside Storage Compartments
Patio Receptacle
Computer Hook-Up with Phone Jack in Dinette Area
Pilot and Co-Pilot Map Lights
Systems Control Center In Hallway
Fluorescent Ceiling Lights throughout, except Pancake Light Bath Ceiling
Fluorescent Ceiling Lights throughout, except inside Bath
Decorative Wood Framed Galley Ceiling Fluorescent Light
Decorative Satin Nickel Lighting Living Room Wall Light, Dinette Overhead and Bedroom Wall Lights
Decorative Satin Nickel New Style Decorative Bath Lavatory Light
Satin Nickel Bullet Lights on Bottom of Living Area Overheads
12V Incandescent Lights under Kitchen and Bedroom Overhead Cabinets

OPTIONS

140 Watt Inverter
Onan® 4.0 kW Generator

HEATING, VENTS & AIR CONDITIONING

One 15M BTU Air Conditioner with Ducted Air and Analog Wall Thermostat, Living Area or Kitchen Location Depending on Floorplan Layout
31M BTU Electronic Ignition Furnace
Above-Floor Ducted Heating System
Non-Powered Roof Vent, Bedroom
Non-Powered Roof Vent, Living Area or Kitchen Location Depending on Floorplan Layout
12V Roof Vent in Bath
Metal Air Return Grill Furnace Satin Nickel Finish

OPTIONS

One 15M BTU Air Conditioner with Heat Pump and Ducted Air and Analog Wall Thermostat, Living Area or Kitchen Location Depending on Floorplan Layout
12V Wet Bay Heater
Fantastic 12V Attic Fan Living Area or Kitchen Location Depending on Floorplan Layout

WINDOWS, DOORS & AWNINGS

Tinted Single Pane Windows
Radius Entrance Door with Obscure Glass, Screen Door and Anti-Skid Steps
Opera Window at Barrel Chair Location (27PBD, 31PBS)
Exterior Entry Assist Handle
Awning Rail
Slide-Out Awnings Living Area and Bedroom
Protecta Glaze Tinted Plexiglas® Skylight in Bathroom

OPTIONS

Rear Window, Deletes Headboard (N/A with Twin Beds Option) (31PKS, 31PBS)
Vinyl Patio Awning with White Arms

SAFETY

Fire Extinguisher
Deadbolt Lock on Entrance Door
120V GFI Protected Circuit
LP Gas Detector
Smoke Detector
Carbon Monoxide Detector
Pilot and Co-Pilot Three-Point Seat Belts
Egress Windows

Welcome to the Family Advantage.

What is the Family Advantage? It's all the ways we put the strength of our family to work for yours. It's the unmatched level of teamwork, expertise and combined experience of all our companies.

It's our ability to respond rapidly to our owner's needs, with new features and technologies. And it's our commitment to value and to giving you more RV for your money.

The most important aspect of the Family Advantage is being there when you need us. That's why our 350 qualified service centers span North America. And it's why no matter where you are, there's someone standing by to talk with you 24 hours a day — to help you get the most from your time on the road.

In short, when you purchase an RV from Monaco Coach Corporation, you get a wider array of benefits than any other manufacturer can offer. To see it all for yourself, call 1-800-634-0855 or 1-800-650-7337. We'd love to meet you Monday through Friday for a tour of one of our state-of-the-art production facilities in Oregon or Indiana.



DRIVING YOUR DREAM.™

91320 Industrial Way, Coburg, OR 97408 800 634-0855 606 Nelson's Pkwy., Wakarusa, IN 46573 800 650-7337

Monaco Coach Corporation is traded on the NYSE under the listing MNC. 1004 NPN:BROMESQ

Welcome to the Family Advantage.

What is the Family Advantage? It's all the ways we put the strength of our family to work for yours. It's the unmatched level of teamwork, expertise and combined experience of all our companies.

It's our ability to respond rapidly to our owner's needs, with new features and technologies. And it's our commitment to value and to giving you more RV for your money.

The most important aspect of the Family Advantage is being there when you need us. That's why our 350 qualified service centers span North America. And it's why no matter where you are, there's someone standing by to talk with you 24 hours a day — to help you get the most from your time on the road.

In short, when you purchase an RV from Monaco Coach Corporation, you get a wider array of benefits than any other manufacturer can offer. To see it all for yourself, call 1-800-634-0855 or 1-800-650-7337. We'd love to meet you Monday through Friday for a tour of one of our state-of-the-art production facilities in Oregon or Indiana.



DRIVING YOUR DREAM.™

91320 Industrial Way, Coburg, OR 97408 800 634-0855 606 Nelson's Pkwy., Wakarusa, IN 46573 800 650-7337

Monaco Coach Corporation is traded on the NYSE under the listing MNC. 1004 NPN:BROMESQ.