



# COMMANDER2005





# COMMANDER2005





# WHEREVER YOU ARE, YOU'RE HOME.

Go ahead. Give into your wanderlust. With Commander you can take on your most ambitious adventures, confident in the knowledge that the comforts of home travel are with you. We've loaded Commander with features designed to make the road less taxing and more enjoyable than ever before. But, perhaps, the most comforting thing about Commander is that it has been built with the same commitment to quality and attention to detail that you've come to expect from Triple E; something that is sure to bring you peace of mind on your next adventure.

## New Commander Features For 2005 Include:

- Wood look laminate floors to the entrance door (most models)
- Convertible cockpit – easily converts into expanded living space
- Porcelain sinks (except A3202FB) and china toilets in lavatory
- Domed Kemlite FRP Flexroof



*Shown with Brazilian Spice Decor*



# WHEREVER YOU ARE, YOU'RE HOME.

Go ahead. Give into your wanderlust. With Commander you can take on your most ambitious adventures, confident in the knowledge that the comforts of home travel are with you. We've loaded Commander with features designed to make the road less taxing and more enjoyable than ever before. But, perhaps, the most comforting thing about Commander is that it has been built with the same commitment to quality and attention to detail that you've come to expect from Triple E; something that is sure to bring you peace of mind on your next adventure.

## New Commander Features For 2005 Include:

- Wood look laminate floors to the entrance door (most models)
- Convertible cockpit — easily converts into expanded living space
- Porcelain sinks (except A3202FB) and china toilets in lavatory
- Domed Kemlite FRP Flexroof



*Shown with Brazilian Spice Decor*





*Commander's new cockpit area features swiveling captain chairs, which allows you to quickly convert the cockpit into an expanded living room, complete with 20" flat screen TV.*

*Enjoy your showers in the natural light provided by the shower's skylight. Selected models also feature a spacious neo angle shower stall.*

*Commander's spacious cockpit provides an excellent view of all instruments and easy access to all controls.*







*Brazilian Spice Decor*

*Commander's new cockpit area features swiveling captain chairs, which allows you to quickly convert the cockpit into an expanded living room, complete with 20" flat screen TV.*

*Enjoy your showers in the natural light provided by the shower's skylight. Selected models also feature a spacious neo angle shower stall.*

*Commander's spacious cockpit provides an excellent view of all instruments and easy access to all controls.*







Everything about Commander's living space has been carefully thought out. From the elegant and spacious dinette area to the full featured lavatory carefully designed with privacy in mind. You'll enjoy the bedroom's plush wall-to-wall carpeting, rich bedding and stylish accents, all helping to make it the perfect refuge from a day of travel.

*Sleep soundly in Commander's spacious bedroom that combines a soothing décor with a luxurious queen sized bed. Shown: Model A3711FWB featuring comfortable occasional chairs with matching ottoman, opposing windows for improved airflow and halogen reading lights.*

*Sturdy aluminum doors protect the exterior baggage compartment. Access is made easy thanks to gas-powered struts.*

*The A3711FWB bedroom features beautiful french doors and large wardrobes. This wardrobe slide out has more than ample storage drawers and is completed with a 20" flat screen TV.*







Everything about Commander's living space has been carefully thought out. From the elegant and spacious dinette area to the full featured lavatory carefully designed with privacy in mind. You'll enjoy the bedroom's plush wall-to-wall carpeting, rich bedding and stylish accents, all helping to make it the perfect refuge from a day of travel.

*Sleep soundly in Commander's spacious bedroom that combines a soothing décor with a luxurious queen sized bed. Shown: Model A3711FWB featuring comfortable occasional chairs with matching ottoman, opposing windows for improved airflow and halogen reading lights.*

*Sturdy aluminum doors protect the exterior baggage compartment. Access is made easy thanks to gas-powered struts.*

*The A3711FWB bedroom features beautiful french doors and large wardrobes. This wardrobe slide out has more than ample storage drawers and is completed with a 20" flat screen TV.*







Among the smart details of the bedroom is a convenient make-up table with optional stool, and day/night shades with blackout to insure privacy.



The large laundry hamper (select models only) can accommodate many days of clothing, helping to keep your living area neat and tidy until a convenient laundry day.

The pull-out pantry (selected models only) stores your food and non perishable groceries.



Commander's galley features wear resistant solid surface counter tops and high-pressure laminate flooring with natural wood grain appearance. Golden Maple cabinetry is available as an option to the standard Autumn Oak.

Other notable features of Commander's cockpit include adjustable armrests on the captain chairs, an optional pull-out laptop tray (perfect for snacking on the go or reading a map) and an optional power sun visor.

Storage space has been optimized through smart design, and includes conveniently placed trash receptacle.







Golden Maple Cabinetry

Among the smart details of the bedroom is a convenient make-up table with optional stool, and day/night shades with blackout to insure privacy.



The large laundry hamper (select models only) can accommodate many days of clothing, helping to keep your living area neat and tidy until a convenient laundry day.

The pull-out pantry (selected models only) stores your food and non perishable groceries.



Commander's galley features wear resistant solid surface counter tops and high-pressure laminate flooring with natural wood grain appearance. Golden Maple cabinetry is available as an option to the standard Autumn Oak.

Other notable features of Commander's cockpit include adjustable armrests on the captain chairs, an optional pull-out laptop tray (perfect for snacking on the go or reading a map) and an optional power sun visor.

Storage space has been optimized through smart design, and includes conveniently placed trash receptacle.





# COLOUR OPTIONS

You can personalize both Commander's interior and exterior schemes. First select either Misty Meadow or Sahara Sunset for your exterior (both are available in standard and full paint options). Then select your interior design scheme from the four available. While we've provided two recommended interior design options for each exterior motif, any of the four interior designs can be selected for your vehicle. Each interior motif has been artfully created by Triple E's professional interior designers to skillfully coordinate upholstery, carpeting and window treatments for an overall effect that is both warm and inviting.









Visit [www.tripleerv.com](http://www.tripleerv.com) for more information on available options.

## Wood Options

AUTUMN  
OAK



GOLDEN  
MAPLE

Exterior		MISTY MEADOW		SAHARA SUNSET				
STANDARD								
								
Interior		KEY WEST	GRECIAN BRONZE	JAMAICAN SAND	BRAZILIAN SPICE			
SOFA								
CAPTAIN CHAIRS								
DINING CHAIRS								
BEDSPREAD								
CARPET								



# COLOUR OPTIONS

You can personalize both Commander's interior and exterior schemes. First select either Misty Meadow or Sahara Sunset for your exterior (both are available in standard and full paint options). Then select your interior design scheme from the four available. While we've provided two recommended interior design options for each exterior motif, any of the four interior designs can be selected for your vehicle. Each interior motif has been artfully created by Triple E's professional interior designers to skillfully coordinate upholstery, carpeting and window treatments for an overall effect that is both warm and inviting.

Visit [www.tripleerv.com](http://www.tripleerv.com) for more information on available options.

## Wood Options

AUTUMN  
OAK



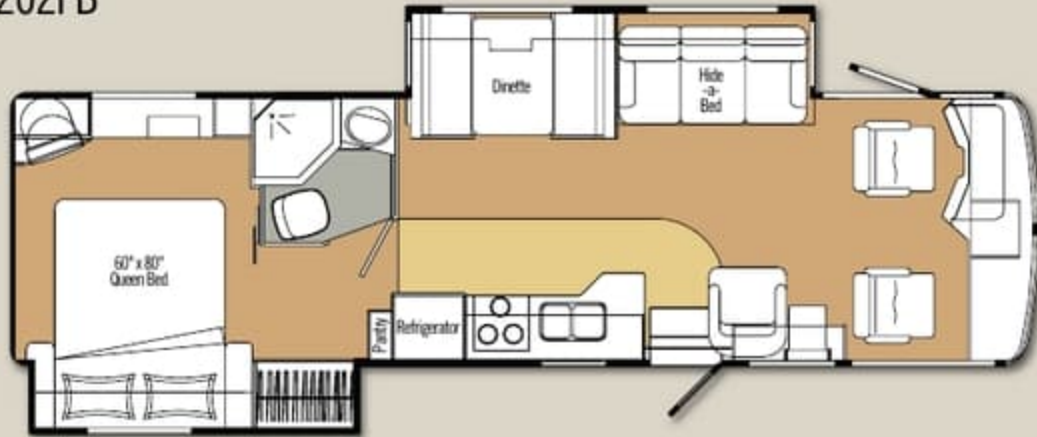
GOLDEN  
MAPLE

Exterior		MISTY MEADOW		SAHARA SUNSET				
STANDARD								
								
Interior		KEY WEST	GRECIAN BRONZE	JAMAICAN SAND	BRAZILIAN SPICE			
SOFA								
CAPTAIN CHAIRS								
DINING CHAIRS								
BEDSPREAD								
CARPET								



# FLOOR PLANS

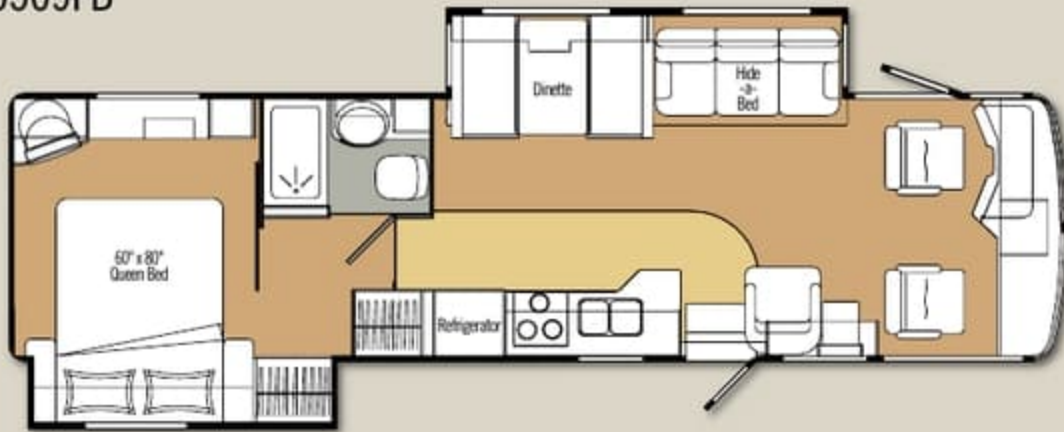
A3202FB



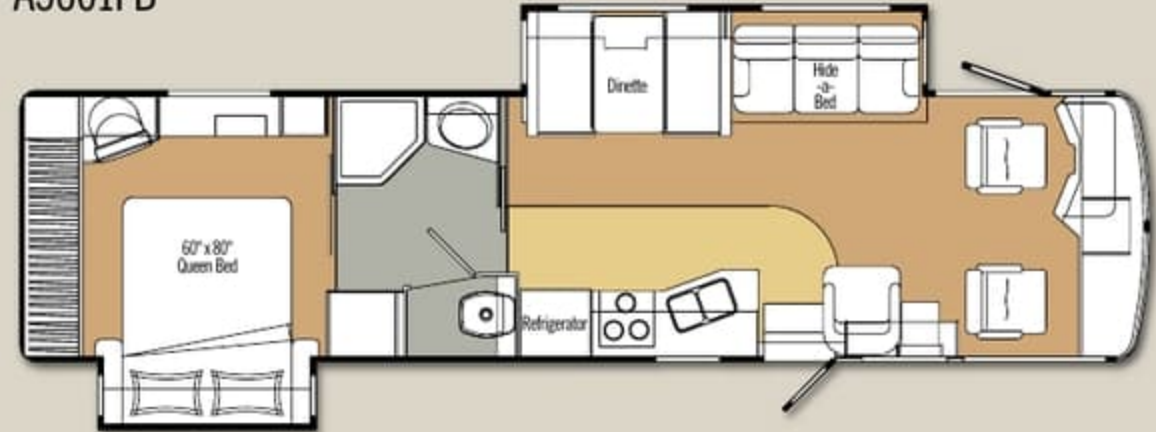
A3510GB



A3509FB



A3601FB



A3711FWB

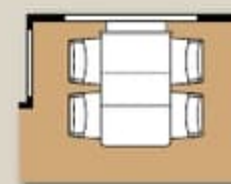


TABLE OPTION 1



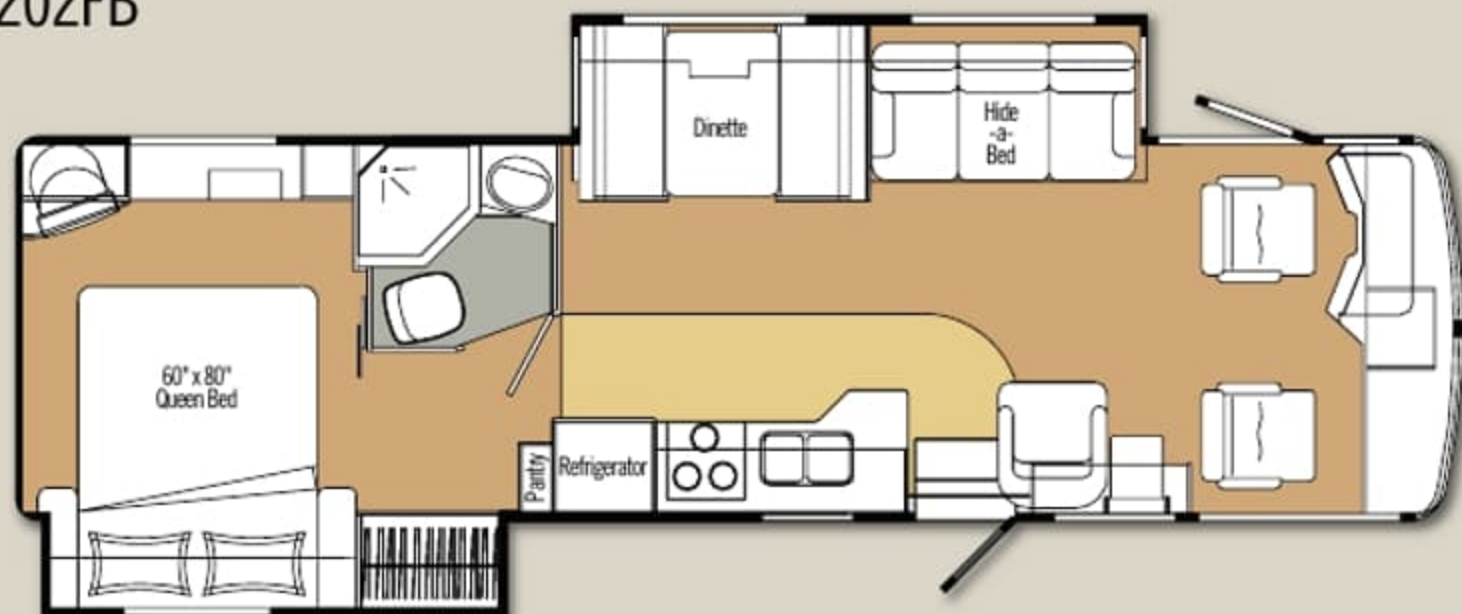
TABLE OPTION 2



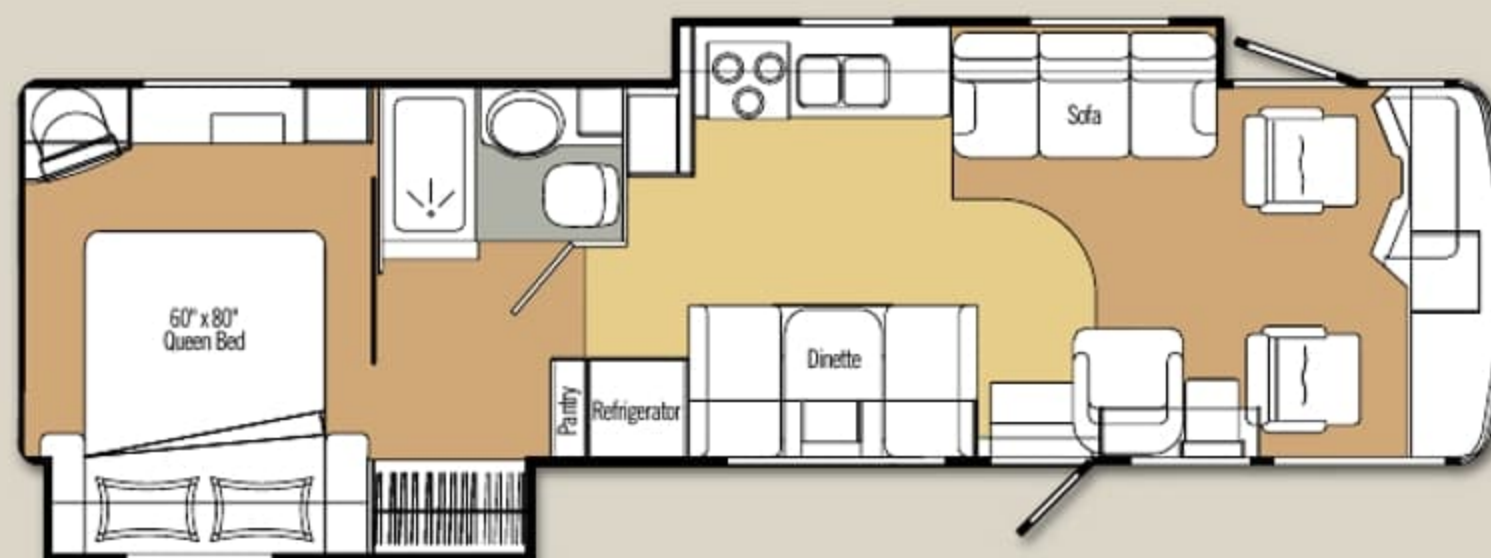


# FLOOR PLANS

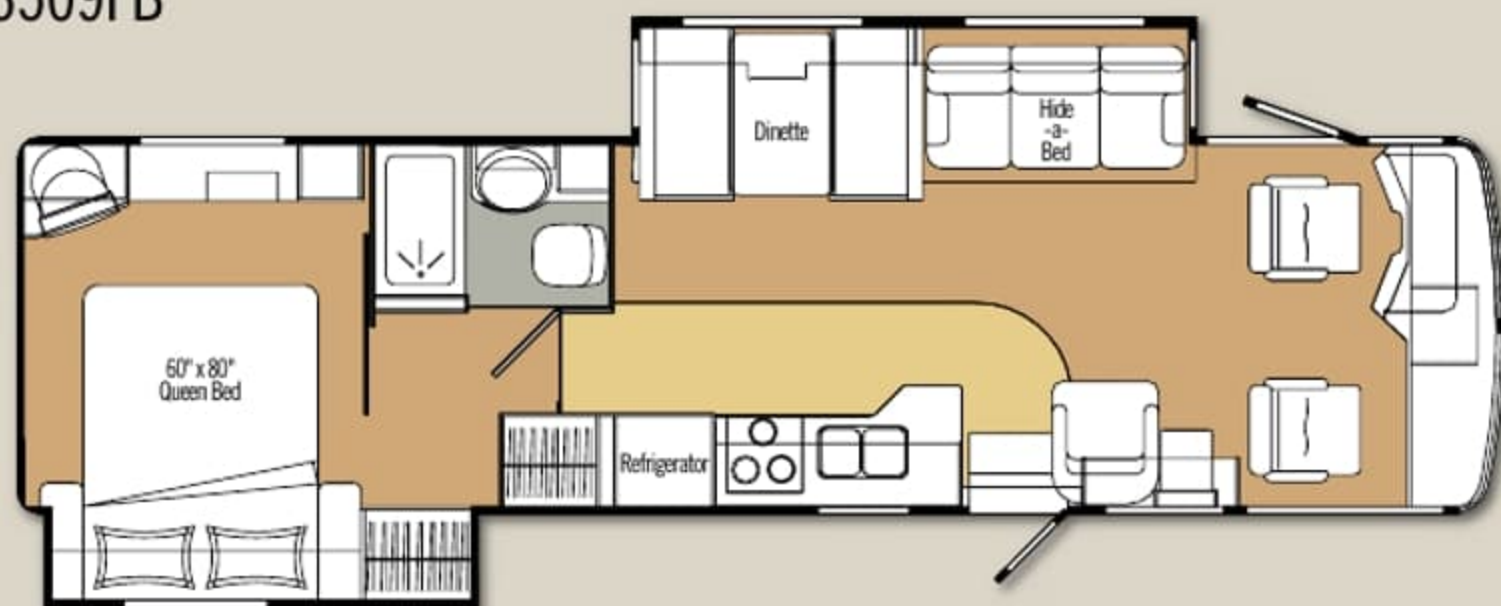
A3202FB



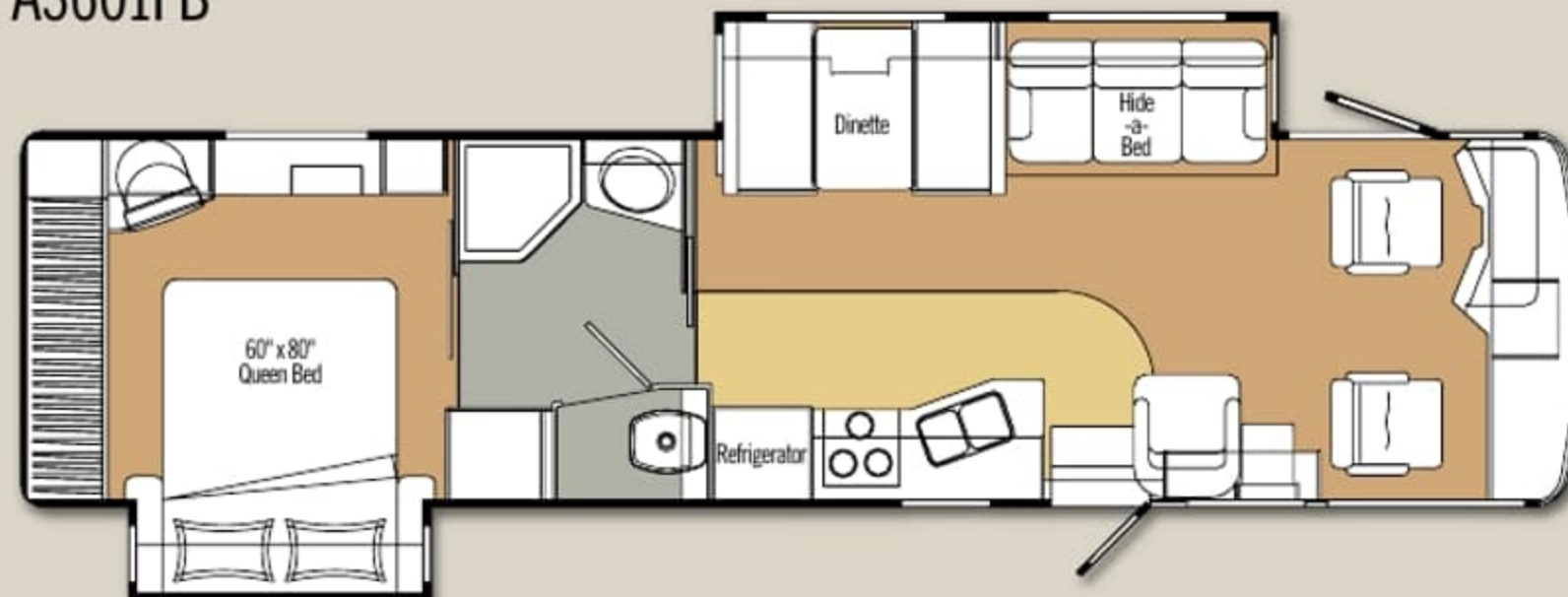
A3510GB



A3509FB



A3601FB



A3711FWB

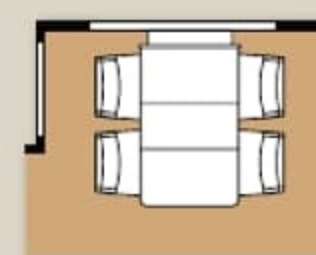


TABLE OPTION 1

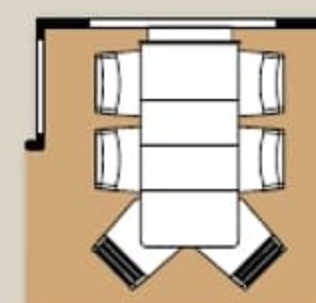


TABLE OPTION 2





# INTERIOR COMFORT AND EXTERIOR PROTECTION

Born of our northern heritage, Triple E's exclusive Climate Guard® system is quite simply the best interior comfort and exterior protection package available in the recreational vehicle industry today. The Climate Guard® system has been developed with today's motorhome enthusiast in mind. It provides year round climate controlled comfort for passengers as well as built in protection for the motorhome itself, ensuring years of trouble free operation and enjoyment.



## INTERIOR COMFORT

- Dometic® roof air conditioners, ducted front to rear, control the temperature throughout the coach.
- High output chassis air conditioner provides travelling comfort.
- Electronic ignition furnace designed to maintain requested interior temperatures through extreme exterior temperatures.
- High output chassis heater for quick windshield defrost.
- A rear auxiliary automotive heater – complete with electric coolant valve – makes travel comfortable while heating the fresh water and holding tank compartments.
- Vacuum bonded, aluminium framed, insulated sidewall and roof construction provides structural strength and maintained warmth throughout the coach.
- Coach windows are designed with a dual pane construction – impeding the transfer of cold to make the interior of the window warmer and less subject to condensation.
- Optional insulated vent covers provide superior insulation for the fantastic fans and roof vents.

## EXTERIOR PROTECTION

- Scratch and hail resistant gel coat fibreglass sidewalls with all weather exterior finish are easy to maintain and will not rust, pit, or fade.
- A domed, seamless, insulated, one piece FRP Flexroof promotes quick water run off and minimizes exterior maintenance.
- Urethane undercoating protects against dust and moisture and reduces stone and road noise.
- Steel enclosed, fibreglass insulated and heated fresh water and holding tanks assure extreme cold climate performance for your plumbing system. Tanks are heated from two different sources – the motorhome's ducted furnace while parked and the rear auxiliary automotive heater when travelling.
- Winterization system complete with potable antifreeze pickup kit allows you to easily drain tanks and fill water lines with potable antifreeze.
- Steel, insulated, and sealed firewall protects the driver and passengers from the outside elements.
- Additional ½" thermal break insulation beyond the standard 1" Styrofoam block insulation separates the climate controlled interior from the outside elements.



# INTERIOR COMFORT AND EXTERIOR PROTECTION

Born of our northern heritage, Triple E's exclusive Climate Guard® system is quite simply the best interior comfort and exterior protection package available in the recreational vehicle industry today. The Climate Guard® system has been developed with today's motorhome enthusiast in mind. It provides year round climate controlled comfort for passengers as well as built in protection for the motorhome itself, ensuring years of trouble free operation and enjoyment.



## INTERIOR COMFORT

- Dometic® roof air conditioners, ducted front to rear, control the temperature throughout the coach.
- High output chassis air conditioner provides travelling comfort.
- Electronic ignition furnace designed to maintain requested interior temperatures through extreme exterior temperatures.
- High output chassis heater for quick windshield defrost.
- A rear auxiliary automotive heater — complete with electric coolant valve — makes travel comfortable while heating the fresh water and holding tank compartments.
- Vacuum bonded, aluminium framed, insulated sidewall and roof construction provides structural strength and maintained warmth throughout the coach.
- Coach windows are designed with a dual pane construction — impeding the transfer of cold to make the interior of the window warmer and less subject to condensation.
- Optional insulated vent covers provide superior insulation for the fantastic fans and roof vents.

## EXTERIOR PROTECTION

- Scratch and hail resistant gel coat fibreglass sidewalls with all weather exterior finish are easy to maintain and will not rust, pit, or fade.
- A domed, seamless, insulated, one piece FRP Flexroof promotes quick water run off and minimizes exterior maintenance.
- Urethane undercoating protects against dust and moisture and reduces stone and road noise.
- Steel enclosed, fibreglass insulated and heated fresh water and holding tanks assure extreme cold climate performance for your plumbing system. Tanks are heated from two different sources — the motorhome's ducted furnace while parked and the rear auxiliary automotive heater when travelling.
- Winterization system complete with potable antifreeze pickup kit allows you to easily drain tanks and fill water lines with potable antifreeze.
- Steel, insulated, and sealed firewall protects the driver and passengers from the outside elements.
- Additional 1/2" thermal break insulation beyond the standard 1" Styrofoam block insulation separates the climate controlled interior from the outside elements.



# SPECIFICATIONS

## COMMANDER 2005

Chassis
GVWR — lbs. (kg)
UVW Ford/WCC — lbs. (kg)
NCC Ford/WCC — lbs. (kg)
Wheelbase — in. (mm)
Length — ft. (mm)
Width — ft. (mm)
Height* Ford/WCC — ft. (mm)
Water Tank Capacity** — U.S. gal. (L)
Water Heater — U.S. gal. (L)
Black Holding Tank Capacity — U.S. gal. (L)
Grey Holding Tank Capacity — U.S. gal. (L)
Fuel Capacity — U.S. gal. (L)
Propane Capacity — U.S. gal. (L)

\*Includes A/C \*\*Includes Water Heater

## A3202FB

Ford/WCC
22,000 (10 000)
18,195 (8 251)/18,735 (8 498)
3,805 (1 726)/3,265 (1 481)
208 (5 283)
32' 7" (9 932)
8' 4" (2 534)
11' 11" (3 632)
84 (319)
10 (37.8)
39 (147.4)
42 (158.8)
75 (284)
25.3 (95.8)

## A3509FB

Ford/WCC
22,000 (10 000)
18,686 (8,476)/19,228 (8 740)
3,314 (1 503)/2,772 (1 260)
228 (5 791)
34' 3" (10 439)
8' 4" (2 534)
11' 11" (3 632)/12' (3 658)
88 (333)
10 (37.8)
39 (147.4)
42 (158.8)
75 (284)
29.2 (110.4)

## A3510FB

Ford/WCC
22,000 (10 000)
18,413 (8 352)/18,995 (8 634)
3,547 (1 609)/3,005 (1 366)
228 (5 791)
34' 3" (10 439)
8' 4" (2 534)
11' 11" (3 632)/12' (3 658)
88 (333)
10 (37.8)
39 (147.4)
42 (158.8)
75 (284)
29.2 (110.4)

## A3601FB

Ford/WCC
22,000 (10 000)
18,929 (8 586)/19,471 (8 850)
3,071 (1 393)/2,529 (1 150)
228 (5 791)
35' 9" (10 896)
8' 4" (2 534)
11' 11" (3 632)/12' (3 658)
88 (333)
10 (37.8)
42 (158.8)
39 (147.4)
75 (284)
29.2 (110.4)

## A3711FB

WCC
24,000 (10 909)
19,736 (8 971)
4,264 (1 938)
242 (6 147)
36' 10" (11 227)
8' 4" (2 534)
12' (3 658)
88 (333)
10 (37.8)
42 (158.8)
39 (147.4)
75 (284)
29.2 (110.4)

**GVWR (GROSS VEHICLE WEIGHT RATING)** — The maximum permissible weight of this motorhome. The GVWR is equal to or greater than the sum of the unloaded vehicle weight (UVW) plus the net carrying capacity (NCC).

**UVW (UNLOADED VEHICLE WEIGHT)** — The weight of the motorhome as built at the factory with full fuel, engine oil, and coolants. The UVW does not include cargo, fresh water, LP gas, occupants, factory or dealer installed accessories.

**NCC (NET CARRYING CAPACITY)** — The maximum weight of all occupants, including the driver, personal belongings, food, fresh water, LP gas, tools, tongue weight of towed vehicle, factory and dealer installed accessories, etc., that can be carried by this motorhome. (NCC is equal to or less than GVWR minus UVW.)

Please see your dealer for weights of factory installed options.

The major considerations in building a top quality motorhome are long lasting beauty coupled with the ability to stand up to all weather conditions. The coach is an aluminium and steel framed structure with vacuum bonded gel coat fibreglass sidewalls and a domed roof finished with a seamless FRP Flexroof.



### FLOOR

- 1 One Piece Woven Poly-Propylene Underbelly
- 2 3/8" Plywood
- 3 Tubular Steel Framing (Welded)
- 4 Styrofoam Filled Wall Support Plates
- 5 1" Block Styrofoam Insulation
- 6 1/2" Plywood
- 7 Carpet Underlay
- 8 Carpeting (Floor covering)

### SIDEWALLS

- 1 Seamless Gelcoat Fibreglass Exterior
- 2 Lauan Structural Backer
- 3 Aluminium Framing (Welded)
- 4 Styrofoam Filled Floor and Roof Plate
- 5 1" Block Styrofoam Insulation
- 6 1/2" Styrofoam Thermal Break Insulation
- 7 Interior Decorative Lauan Wall Panels

### ROOF

- 1 One Piece FRP Flexroof
- 2 Lauan Backer
- 3 Aluminium Roof Truss
- 4 Styrofoam Filled Roof Truss Supports
- 5 1 1/2" Block Styrofoam Insulation
- 6 Enclosed/Insulated Climate Control Ducting
- 7 2" Block Styrofoam Thermal Break Insulation
- 8 3/8" Plywood
- 9 Padded Vinyl Headliner



# SPECIFICATIONS

## COMMANDER 2005

Chassis
GVWR — lbs. (kg)
UVW Ford/WCC — lbs. (kg)
NCC Ford/WCC — lbs. (kg)
Wheelbase — in. (mm)
Length — ft. (mm)
Width — ft. (mm)
Height* Ford/WCC — ft. (mm)
Water Tank Capacity** — U.S. gal. (L)
Water Heater — U.S. gal. (L)
Black Holding Tank Capacity — U.S. gal. (L)
Grey Holding Tank Capacity — U.S. gal. (L)
Fuel Capacity — U.S. gal. (L)
Propane Capacity — U.S. gal. (L)

## A3202FB

Ford/WCC
22,000 (10 000)
18,195 (8 251)/18,735 (8 498)
3,805 (1 726)/3,265 (1 481)
208 (5 283)
32' 7" (9 932)
8' 4" (2 534)
11' 11" (3 632)
84 (319)
10 (37.8)
39 (147.4)
42 (158.8)
75 (284)
25.3 (95.8)

## A3509FB

Ford/WCC
22,000 (10 000)
18,686 (8,476)/19,228 (8 740)
3,314 (1 503)/2,772 (1 260)
228 (5 791)
34' 3" (10 439)
8' 4" (2 534)
11' 11" (3 632)/12' (3 658)
88 (333)
10 (37.8)
39 (147.4)
42 (158.8)
75 (284)
29.2 (110.4)

## A3510FB

Ford/WCC
22,000 (10 000)
18,413 (8 352)/18,995 (8 634)
3,547 (1 609)/3,005 (1 366)
228 (5 791)
34' 3" (10 439)
8' 4" (2 534)
11' 11" (3 632)/12' (3 658)
88 (333)
10 (37.8)
39 (147.4)
42 (158.8)
75 (284)
29.2 (110.4)

## A3601FB

Ford/WCC
22,000 (10 000)
18,929 (8 586)/19,471 (8 850)
3,071 (1 393)/2,529 (1 150)
228 (5 791)
35' 9" (10 896)
8' 4" (2 534)
11' 11" (3 632)/12' (3 658)
88 (333)
10 (37.8)
42 (158.8)
39 (147.4)
75 (284)
29.2 (110.4)

## A3711FB

WCC
24,000 (10 909)
19,736 (8 971)
4,264 (1 938)
242 (6 147)
36' 10" (11 227)
8' 4" (2 534)
12' (3 658)
88 (333)
10 (37.8)
42 (158.8)
39 (147.4)
75 (284)
29.2 (110.4)

\*Includes A/C \*\*Includes Water Heater

**GVWR (GROSS VEHICLE WEIGHT RATING)** — The maximum permissible weight of this motorhome. The GVWR is equal to or greater than the sum of the unloaded vehicle weight (UVW) plus the net carrying capacity (NCC).

**UVW (UNLOADED VEHICLE WEIGHT)** — The weight of the motorhome as built at the factory with full fuel, engine oil, and coolants. The UVW does not include cargo, fresh water, LP gas, occupants, factory or dealer installed accessories.

**NCC (NET CARRYING CAPACITY)** — The maximum weight of all occupants, including the driver, personal belongings, food, fresh water, LP gas, tools, tongue weight of towed vehicle, factory and dealer installed accessories, etc., that can be carried by this motorhome. (NCC is equal to or less than GVWR minus UVW.)

Please see your dealer for weights of factory installed options.

The major considerations in building a top quality motorhome are long lasting beauty coupled with the ability to stand up to all weather conditions. The coach is an aluminium and steel framed structure with vacuum bonded gel coat fibreglass sidewalls and a domed roof finished with a seamless FRP Flexroof.



### FLOOR

- 1 One Piece Woven Poly-Propylene Underbelly
- 2 3/8" Plywood
- 3 Tubular Steel Framing (Welded)
- 4 Styrofoam Filled Wall Support Plates
- 5 1" Block Styrofoam Insulation
- 6 1/2" Plywood
- 7 Carpet Underlay
- 8 Carpeting (Floor covering)

### SIDEWALLS

- 1 Seamless Gelcoat Fibreglass Exterior
- 2 Lauan Structural Backer
- 3 Aluminium Framing (Welded)
- 4 Styrofoam Filled Floor and Roof Plate
- 5 1" Block Styrofoam Insulation
- 6 1/2" Styrofoam Thermal Break Insulation
- 7 Interior Decorative Lauan Wall Panels

### ROOF

- 1 One Piece FRP Flexroof
- 2 Lauan Backer
- 3 Aluminium Roof Truss
- 4 Styrofoam Filled Roof Truss Supports
- 5 1 1/2" Block Styrofoam Insulation
- 6 Enclosed/Insulated Climate Control Ducting
- 7 2" Block Styrofoam Thermal Break Insulation
- 8 3/8" Plywood
- 9 Padded Vinyl Headliner



# STANDARDS AND OPTIONS

## VEHICULAR

	A3202FB	A3509FB	A3510GB	A3601FB	A3711FWB
Air Conditioner – Chassis	S	S	S	S	S
Airbag Assist Suspension – Rear	S	S	S	S	S
Airbag Assist Suspension – Front	0	0	0	0	0
Alternator – 130 Amp	S	S	S	S	S
Block Heater	S	S	S	S	S
Bumper – Integrated Fibreglass Rear Bumper, Steel Reinforced	S	S	S	S	S
Chassis – Ford 6.8 L V-10 Triton 22,000 lb. GVW, 235/80R22.5 Tires with Aluminium Wheels	S	S	S	S	-
Chassis – Workhorse W22, 22,000 lb. GVW, 8.1 Vortec, 235/80R22.5 Tires with Wheel Simulator and Valve Extensions	0	0	0	0	-
Chassis – Workhorse W24, 24,000 lb. GVW, 8.1 Vortec, 235/80R22.5 Tires with Wheel Simulator and Valve Extensions	-	-	-	-	S
Compass/Thermometer – Dash Mounted Directional Compass with Exterior Temperature	0	0	0	0	0
Door – Driver's with Power Window	S	S	S	S	S
Fans – Chrome Cockpit Ventilating with Dash Switch	0	0	0	0	0
Headlights – Halogen	S	S	S	S	S
Hitch – Trailer Hitch Receiver with Wiring and Plug, Class III	S	S	S	S	S
Jacks – HWH Hydraulic Levelling Jacks with Touch Pad Control	S	S	S	S	S
Light – High Mount Stoplight, LED Long Life	S	S	S	S	S
Lights – Halogen Automotive Driving Lights	S	S	S	S	S
Mats – Driver/Passenger Floor Mats	S	S	S	S	S
Mirrors – Heated Remote Exterior Mirrors	S	S	S	S	S
Rust Protection	0	0	0	0	0
Slide Out – HWH Hydraulic Living Area Flush Floor Slide Out System	S	S	-	S	S
Slide Out – HWH Hydraulic Galley Area Slide Out System	-	-	S	-	-
Cruise Control and Tilt Steering Wheel	S	S	S	S	S
Switch – Battery Boost (Coach to Chassis Batteries)	S	S	S	S	S
Switch – Battery Selector Switch for Radio	S	S	S	S	S
Transmission Cooler	S	S	S	S	S
Undercoating – Automotive Type	S	S	S	S	S
Wipers – Wet Arm Windshield Wipers with Intermittent Function	S	S	S	S	S
Wheels – Aluminium Wheels (Workhorse Chassis Only)	0	0	0	0	0

## CONSTRUCTION

Baggage Doors – Aluminium Baggage Doors with Gas Struts and Slam Latch	S	S	S	S	S
Gelcoat Fibreglass Front and Rear Cap	S	S	S	S	S
Lined and Lit Baggage Compartments	S	S	S	S	S
Roof – Domed Kevlar FRP Flexroof	S	S	S	S	S
Steel Cab Floor, Firewall and Dash Structure	S	S	S	S	S
Vacuum Bonded Aluminium Framed Insulated Sidewall and Roof Construction with Thermal Break	S	S	S	S	S
Vacuum Bonded Gelcoat Fibreglass Sidewalls	S	S	S	S	S
Vacuum Bonded Steel Framed Insulated Floor Construction	S	S	S	S	S
Windows – Thermal Pane	S	S	S	S	S

## EXTERIOR

Concealed Locking Fuel Fill Access	S	S	S	S	S
Door – Screened Entry Door with Stud Shield and Deadbolt Lock	S	S	S	S	S
Exterior Assist Handle – Monogrammed	S	S	S	S	S
Ladder – Exterior Ladder with Detachable Lower Section	S	S	S	S	S
Light – Patio	S	S	S	S	S
Lights – Rear Mounted Docking	0	0	0	0	0

## EXTERIOR (CONTINUED)

Exterior Shower	S	S	S	S	S
Step – Electric Retractable (3 Step)	S	S	S	S	S
Winter Front Close Out Package	0	0	0	0	0
Paint – Full Body Exterior Paint with Clear Coat and Vinyl Graphics	0	0	0	0	0
Diamond Shield Paint Protection Film – Invisible Bra	0	0	0	0	0

## INTERIOR

Bedspring – Decorative Bed Spring with Throw Pillows	S	S	S	S	S
Blinds – Drivers and Passenger Side Roller	S	S	S	S	S
Cabinets – Solid Oak Cabinet Face Framing	S	S	S	S	S
Ceiling – Domed with Padded Vinyl Headliner	S	S	S	S	S
Computer Tray – Passenger's Side	0	0	0	0	0
Covers – Insulated Vent Covers	0	0	0	0	0
Detectors – Electronic Smoke, LP and CO	S	S	S	S	S
Doors – Solid Oak Raised Panel Cabinet Doors	S	S	S	S	S
Drawers – Slide Out Drawer Option in Washer /Dryer Cabinet (N/A with Washer/Dryer Option)	-	0	-	0	-
Drawers – Dual Roller Glide Drawers with Travel Lock	S	S	S	S	S
Fire Extinguisher – Dry Chemical	S	S	S	S	S
Flooring – Carpeting in Living Area and Bedroom	S	S	S	S	S
Lamps – Courtesy Floor Lamps	S	S	S	S	S
Latches – Snap Latches on Galley, Lavatory Overhead Cabinets and Large Wardrobe Doors	S	S	S	S	S
Lighting – Fluorescent Lighting Upgrade in Aisle and Halogen Upgrade Under Cabinets over Couch and Bed	0	0	0	0	0
Shades – Day/Night Pleated with Bedroom Blackout	S	S	S	S	S
Skylight – with Blind in Living Area	0	0	0	0	0
Storage – Easy Under Bed Storage with Gas Struts	S	S	S	S	S
Sun Visor – Power Driver and Passenger Sun Visor with Switch on Dash	0	0	0	0	0
Sun Visor – Power Centre Sun Visor with Switch on Dash	0	0	0	0	0
Cabinetry – "Golden Maple" Cabinetry	0	0	0	0	0
Safe – Keylock Safebox	0	0	0	0	0
Lighting – Three Way Switched Interior Lights (Door, Dash and on Light)	S	S	S	S	S

## FURNITURE

Booth Dinette with Slide Out Drawers and Solid Surface Edged Laminate Table	S	S	S	S	S
Cabinet – Refreshment Centre	0	0	0	0	-
Chair – Ultra Leather Captain's on Passenger's Side	S	S	S	S	S
Hide-A-Bed – Cloth on Driver's Side with Air Coil Mattress with 110 Volt Air Pump	0	0	-	0	0
Magic Bed – Cloth on Driver's Side	-	-	0	-	-
Mattress – Residential Quality Queen (60" x 80")	S	S	S	S	S
Mattress – Upgrade	0	0	0	0	0
Seat – Ultra Leather Drivers Captain Chair with 6 Way Power	S	S	S	S	S
Seat – Ultra Leather Passenger Captain Chair	S	S	S	S	S
Stool – Stool for Make Up Table	0	0	0	0	0
Sofa – Cloth Designer Series Easybed on Driver's Side with Flip Up Seat and Bayonet Arms	S	S	S	S	S
Table (Option 1) – Solid Wood Wall Mount Table with 4 Solid Wood Chairs with One Leaf in Lieu of Booth Dinette	0	0	0	0	0
Table (Option 2) – Two Extra Folding Chairs with Second Leaf for Table	0	0	0	0	0
Two Lounge Chairs in Bedroom with One Ottoman	-	-	-	-	S
Lounge Chair with Ottoman and Computer/Make Up Centre	-	-	-	-	0



# STANDARDS AND OPTIONS

## VEHICULAR

	A3202FB	A3509FB	A3510GB	A3601FB	A3711FWB
Air Conditioner – Chassis	S	S	S	S	S
Airbag Assist Suspension – Rear	S	S	S	S	S
Airbag Assist Suspension – Front	0	0	0	0	0
Alternator – 130 Amp	S	S	S	S	S
Block Heater	S	S	S	S	S
Bumper – Integrated Fibreglass Rear Bumper, Steel Reinforced	S	S	S	S	S
Chassis – Ford 6.8 L V-10 Triton 22,000 lb. GVW, 235/80R22.5 Tires with Aluminium Wheels	S	S	S	S	-
Chassis – Workhorse W22, 22,000 lb. GVW, 8.1 Vortec, 235/80R22.5 Tires with Wheel Simulator and Valve Extensions	0	0	0	0	-
Chassis – Workhorse W24, 24,000 lb. GVW, 8.1 Vortec, 235/80R22.5 Tires with Wheel Simulator and Valve Extensions	-	-	-	-	S
Compass/Thermometer – Dash Mounted Directional Compass with Exterior Temperature	0	0	0	0	0
Door – Driver's with Power Window	S	S	S	S	S
Fans – Chrome Cockpit Ventilating with Dash Switch	0	0	0	0	0
Headlights – Halogen	S	S	S	S	S
Hitch – Trailer Hitch Receiver with Wiring and Plug, Class III	S	S	S	S	S
Jacks – HWH Hydraulic Levelling Jacks with Touch Pad Control	S	S	S	S	S
Light – High Mount Stoplight, LED Long Life	S	S	S	S	S
Lights – Halogen Automotive Driving Lights	S	S	S	S	S
Mats – Driver/Passenger Floor Mats	S	S	S	S	S
Mirrors – Heated Remote Exterior Mirrors	S	S	S	S	S
Rust Protection	0	0	0	0	0
Slide Out – HWH Hydraulic Living Area Flush Floor Slide Out System	S	S	-	S	S
Slide Out – HWH Hydraulic Galley Area Slide Out System	-	-	S	-	-
Cruise Control and Tilt Steering Wheel	S	S	S	S	S
Switch – Battery Boost (Coach to Chassis Batteries)	S	S	S	S	S
Switch – Battery Selector Switch for Radio	S	S	S	S	S
Transmission Cooler	S	S	S	S	S
Undercoating – Automotive Type	S	S	S	S	S
Wipers – Wet Arm Windshield Wipers with Intermittent Function	S	S	S	S	S
Wheels – Aluminium Wheels (Workhorse Chassis Only)	0	0	0	0	0

## CONSTRUCTION

Baggage Doors – Aluminium Baggage Doors with Gas Struts and Slam Latch	S	S	S	S	S
Gelcoat Fibreglass Front and Rear Cap	S	S	S	S	S
Lined and Lit Baggage Compartments	S	S	S	S	S
Roof – Domed Kemlite FRP Flexroof	S	S	S	S	S
Steel Cab Floor, Firewall and Dash Structure	S	S	S	S	S
Vacuum Bonded Aluminium Framed Insulated Sidewall and Roof Construction with Thermal Break	S	S	S	S	S
Vacuum Bonded Gelcoat Fibreglass Sidewalls	S	S	S	S	S
Vacuum Bonded Steel Framed Insulated Floor Construction	S	S	S	S	S
Windows – Thermal Pane	S	S	S	S	S

## EXTERIOR

Concealed Locking Fuel Fill Access	S	S	S	S	S
Door – Screened Entry Door with Stud Shield and Deadbolt Lock	S	S	S	S	S
Exterior Assist Handle – Monogrammed	S	S	S	S	S
Ladder – Exterior Ladder with Detachable Lower Section	S	S	S	S	S
Light – Patio	S	S	S	S	S
Lights – Rear Mounted Docking	0	0	0	0	0

## EXTERIOR (CONTINUED)

Exterior Shower	S	S	S	S	S
Step – Electric Retractable (3 Step)	S	S	S	S	S
Winter Front Close Out Package	0	0	0	0	0
Paint – Full Body Exterior Paint with Clear Coat and Vinyl Graphics	0	0	0	0	0
Diamond Shield Paint Protection Film – Invisible Bra	0	0	0	0	0

## INTERIOR

Bedsprad – Decorative Bed Spread with Throw Pillows	S	S	S	S	S
Blinds – Drivers and Passenger Side Roller	S	S	S	S	S
Cabinets – Solid Oak Cabinet Face Framing	S	S	S	S	S
Ceiling – Domed with Padded Vinyl Headliner	S	S	S	S	S
Computer Tray – Passenger's Side	0	0	0	0	0
Covers – Insulated Vent Covers	0	0	0	0	0
Detectors – Electronic Smoke, LP and CO	S	S	S	S	S
Doors – Solid Oak Raised Panel Cabinet Doors	S	S	S	S	S
Drawers – Slide Out Drawer Option in Washer /Dryer Cabinet (N/A with Washer/Dryer Option)	-	0	-	0	-
Drawers – Dual Roller Glide Drawers with Travel Lock	S	S	S	S	S
Fire Extinguisher – Dry Chemical	S	S	S	S	S
Flooring – Carpeting in Living Area and Bedroom	S	S	S	S	S
Lamps – Courtesy Floor Lamps	S	S	S	S	S
Latches – Snap Latches on Galley, Lavatory Overhead Cabinets and Large Wardrobe Doors	S	S	S	S	S
Lighting – Fluorescent Lighting Upgrade in Aisle and Halogen Upgrade Under Cabinets over Couch and Bed	0	0	0	0	0
Shades – Day/Night Pleated with Bedroom Blackout	S	S	S	S	S
Skylight – with Blind in Living Area	0	0	0	0	0
Storage – Easy Under Bed Storage with Gas Struts	S	S	S	S	S
Sun Visor – Power Driver and Passenger Sun Visor with Switch on Dash	0	0	0	0	0
Sun Visor – Power Centre Sun Visor with Switch on Dash	0	0	0	0	0
Cabinetry – "Golden Maple" Cabinetry	0	0	0	0	0
Safe – Keylock Safebox	0	0	0	0	0
Lighting – Three Way Switched Interior Lights (Door, Dash and on Light)	S	S	S	S	S

## FURNITURE

Booth Dinette with Slide Out Drawers and Solid Surface Edged Laminate Table	S	S	S	S	S
Cabinet – Refreshment Centre	0	0	0	0	-
Chair – Ultra Leather Captain's on Passenger's Side	S	S	S	S	S
Hide-A-Bed – Cloth on Driver's Side with Air Coil Mattress with 110 Volt Air Pump	0	0	-	0	0
Magic Bed – Cloth on Driver's Side	-	-	0	-	-
Mattress – Residential Quality Queen (60" x 80")	S	S	S	S	S
Mattress – Upgrade	0	0	0	0	0
Seat – Ultra Leather Drivers Captain Chair with 6 Way Power	S	S	S	S	S
Seat – Ultra Leather Passenger Captain Chair	S	S	S	S	S
Stool – Stool for Make Up Table	0	0	0	0	0
Sofa – Cloth Designer Series Easybed on Driver's Side with Flip Up Seat and Bayonet Arms	S	S	S	S	S
Table (Option 1) – Solid Wood Wall Mount Table with 4 Solid Wood Chairs with One Leaf in Lieu of Booth Dinette	0	0	0	0	0
Table (Option 2) – Two Extra Folding Chairs with Second Leaf for Table	0	0	0	0	0
Two Lounge Chairs in Bedroom with One Ottoman	-	-	-	-	S
Lounge Chair with Ottoman and Computer/Make Up Centre	-	-	-	-	0



## GALLEY

	A3202FB	A3509FB	A3510GB	A3601FB	A3711FWB
Cook Top – Recessed Cook Top with High Output Burner	S	S	S	S	S
Countertop – Solid Surface Counter in Galley with Stainless Steel Under-Mount Sink	S	S	S	S	S
Flooring – High Pressure Wood Look Laminate Floor	S	S	S	S	S
Micro/Convection Oven – (OTR) with 110 Volt Range Hood and Light	S	S	S	S	S
Oven – LP Gas	0	0	0	0	0
Bi-Fold Range Cover – Recessed	S	S	S	S	S
Refrigerator – Dometic Two Door, Gas/Electric 10 cu. ft. with Ice Maker and Raised Sculptured Insert	0	0	0	0	0
Refrigerator – Dometic LP/Electric 8 cu. ft. with Temp Control and Raised Sculptured Insert	S	S	S	S	S
Pantry – Half Height Pantry above Washer and Dryer Cabinet	-	0	-	-	-

## LAVATORY

	A3202FB	A3509FB	A3510GB	A3601FB	A3711FWB
Fan – Thermostatically Controlled (non reversible) in Lavatory or Toilet Room	S	S	S	S	S
Fan – Thermostatically Controlled in Bedroom (N/A with Dual Roof Air Option)	S	S	S	S	S
Flooring – Linoleum Flooring in Bathroom	S	S	S	S	S
Skylight – in Shower	S	S	S	S	S
Toilet – Sealant Traveller Lite – China, Foot Flush	S	S	S	S	S
Sink – Porcelain Sink in Lavatory	-	S	S	S	S

## ENTERTAINMENT

	A3202FB	A3509FB	A3510GB	A3601FB	A3711FWB
CB Antenna – Includes Coax Lead in under Dash	0	0	0	0	0
Master Control – Audio/Video Master Control Switch Box	S	S	S	S	S
Pre-Wire – Satellite Dish (with 12 Volt Power, 110 Volt and Coax Cable)	S	S	S	S	S
Stereo – AM/FM Weather Band Receiver with CD Player in Dash with Big Buttons	S	S	S	S	S
CD Changer – 10 Stack CD Changer (N/A with AM/FM/Cassette/CD)	0	0	0	0	0
Stereo – AM/FM Weather Band Receiver with Cassette/CD Player with Big Buttons	0	0	0	0	0
Stereo – Exterior AM/FM, CD Stereo with Shielded Speakers	0	0	0	0	0
Telephone and Cable TV Hook-Up – Exterior	S	S	S	S	S
TV – AC 20" Flat Screen Colour Stereo with Remote in Front Overhead Cabinet	S	S	S	S	S
TV – AC 20" Flat Screen Colour Stereo with Remote in Bedroom	S	S	S	S	S
TV Antenna – Roof Top Retractable Antenna with Booster	S	S	S	S	S
Satellite Dish – Winegard with Electronic Elevation Sensor	0	0	0	0	0
Stereo – AM/FM CD Stereo in Bedroom with Alarm Clock	0	0	0	0	0
Stereo – DHS Mobile Theatre System, 5 Channel Stereo with Subwoofer	0	0	0	0	0
DVD/VCR Combination Unit	0	0	0	0	0

## HEATING VENTILATING AND AIR CONDITIONING

	A3202FB	A3509FB	A3510GB	A3601FB	A3711FWB
Air Conditioner – Dual Ducted (2) 13,500 BTU with Heat Strip	0	0	0	0	0
Air Conditioner – Ducted Roof 13,500 BTU with Heat Strip	S	S	S	S	S
Air Conditioner – Ducted Roof 15,000 BTU with Heat Strip	0	0	0	0	0
Fan – Thermostatically Controlled Fan in Living Area	0	0	0	0	0
Furnace – 2 x 25,000 BTU Furnace with Electronic Ignition	S	S	S	S	S
Heater – Rear Auxiliary Automotive with Electric Water Valve	S	S	S	S	S

## ELECTRICAL

	A3202FB	A3509FB	A3510GB	A3601FB	A3711FWB
30 Amp Electrical Service	S	S	S	S	S
50 Amp Service with EMS	0	0	0	0	0
Batteries – Dual RV 27 Deep Cycle Auxiliary (12 Volt)	S	S	S	S	S
Batteries – Upgrade to 2 x 6 Volt Coach Batteries	0	0	0	0	0
Bidirectional Isolator Relay Delay (BIRD) Battery Charging	S	S	S	S	S
Converter – 120/12 Volt with Charger and Changeover Relay	S	S	S	S	S
Energy Management System (EMS) for Standard 30 Amp Service	0	0	0	0	0
Generator – 5.5 KW Onan Marquis Gold with Dash Mounted Hour Meter and Auto Changeover Switch	S	S	S	S	S
Inverter – 2000 Watt Inverter with 100 Amp Charger with Freedom Remote (requires 50 amp service)	0	0	0	0	0
Pre-Wire – Solar Panel	S	S	S	S	S
Switch – Electronic Battery Disconnect (Coach Batteries)	S	S	S	S	S

## PLUMBING AND LP SYSTEMS

	A3202FB	A3509FB	A3510GB	A3601FB	A3711FWB
Black Tank Flush System	S	S	S	S	S
Holding Tanks – Enclosed, Insulated and Dual Heated Waste Tanks	S	S	S	S	S
LP Tank – Easy Access Propane Tank	S	S	S	S	S
Panel – Systems Monitor	S	S	S	S	S
Roughed in Plumbing for Washer Dryer	-	S	-	S	-
Switch – 3 Way Water Pump Switch	S	S	S	S	S
Valve – Water Heater By-Pass	S	S	S	S	S
Water Heater – Electronic Ignition LP Gas/Electric/Motoraid	S	S	S	S	S
Water Purifier – Faucet in Galley	S	S	S	S	S
Water Tank – Enclosed, Insulated and Dual Heated	S	S	S	S	S
Water Tank Fill and Bleach Port	S	S	S	S	S
Winterization System with Antifreeze Pickup	S	S	S	S	S

## SYSTEMS

	A3202FB	A3509FB	A3510GB	A3601FB	A3711FWB
Central Vacuum with Outlet in Baggage Compartment	S	S	S	S	S
Washer/Dryer (vented) (requires EMS with Either 30 or 50 amp service)	-	0	-	0	-
Rear-View Camera/Monitor – Colour LCD Display Mounted in Dash	S	S	S	S	S

## OPTIONAL AWNING PACKAGES

	A3202FB	A3509FB	A3510GB	A3601FB	A3711FWB
Awning – Weathershield Equipped A&E 2 Step Patio with Black Hardware, Acrylic (length shown)	14	15	15	18	-
Awning – Weathershield Equipped A&E Elite Slide Topper (number of awnings shown)	2	2	2	2	-
Awning – Weathershield Equipped A&E Elite Window Awnings	3	3	3	2	-
Awning – Weathershield Equipped Carefree Patio with Black Hardware	-	-	-	-	18
Awning – Weathershield Equipped Carefree Slide Topper (number of awnings shown)	-	-	-	-	3
Awning – Weathershield Equipped Carefree Elite Window Awnings	-	-	-	-	1

Factory P.D.I.

0 0 0 0 0

New for 2005 S Standard 0 Optional



## GALLEY

Cook Top — Recessed Cook Top with High Output Burner	S	S	S	S	S
Countertop — Solid Surface Counter in Galley with Stainless Steel Under-Mount Sink	S	S	S	S	S
Flooring — High Pressure Wood Look Laminate Floor	S	S	S	S	S
Micro/Convection Oven — (OTR) with 110 Volt Range Hood and Light	S	S	S	S	S
Oven — LP Gas	O	O	O	O	O
Bi-Fold Range Cover — Recessed	S	S	S	S	S
Refrigerator — Dometic Two Door, Gas/Electric 10 cu. ft. with Ice Maker and Raised Sculptured Insert	O	O	O	O	O
Refrigerator — Dometic LP/Electric 8 cu. ft. with Temp Control and Raised Sculptured Insert	S	S	S	S	S
Pantry — Half Height Pantry above Washer and Dryer Cabinet	-	O	-	-	-

## LAVATORY

Fan — Thermostatically Controlled (non reversible) in Lavatory or Toilet Room	S	S	S	S	S
Fan — Thermostatically Controlled in Bedroom (N/A with Dual Roof Air Option)	S	S	S	S	S
Flooring — Linoleum Flooring in Bathroom	S	S	S	S	S
Skylight — in Shower	S	S	S	S	S
Toilet — Sealand Traveller Lite — China, Foot Flush	S	S	S	S	S
Sink — Porcelain Sink in Lavatory	-	S	S	S	S

## ENTERTAINMENT

CB Antenna — Includes Coax Lead in under Dash	O	O	O	O	O
Master Control — Audio/Video Master Control Switch Box	S	S	S	S	S
Pre-Wire — Satellite Dish (with 12 Volt Power, 110 Volt and Coax Cable)	S	S	S	S	S
Stereo — AM/FM Weather Band Receiver with CD Player in Dash with Big Buttons	S	S	S	S	S
CD Changer — 10 Stack CD Changer (N/A with AM/FM/Cassette/CD)	O	O	O	O	O
Stereo — AM/FM Weather Band Receiver with Cassette/CD Player with Big Buttons	O	O	O	O	O
Stereo — Exterior AM/FM, CD Stereo with Shielded Speakers	O	O	O	O	O
Telephone and Cable TV Hook-Up — Exterior	S	S	S	S	S
TV — AC 20" Flat Screen Colour Stereo with Remote in Front Overhead Cabinet	S	S	S	S	S
TV — AC 20" Flat Screen Colour Stereo with Remote in Bedroom	S	S	S	S	S
TV Antenna — Roof Top Retractable Antenna with Booster	S	S	S	S	S
Satellite Dish — Winegard with Electronic Elevation Sensor	O	O	O	O	O
Stereo — AM/FM CD Stereo in Bedroom with Alarm Clock	O	O	O	O	O
Stereo — DHS Mobile Theatre System, 5 Channel Stereo with Subwoofer	O	O	O	O	O
DVD/VCR Combination Unit	O	O	O	O	O

## HEATING VENTILATING AND AIR CONDITIONING

Air Conditioner — Dual Ducted (2) 13,500 BTU with Heat Strip	O	O	O	O	O
Air Conditioner — Ducted Roof 13,500 BTU with Heat Strip	S	S	S	S	S
Air Conditioner — Ducted Roof 15,000 BTU with Heat Strip	O	O	O	O	O
Fan — Thermostatically Controlled Fan in Living Area	O	O	O	O	O
Furnace — 2 x 25,000 BTU Furnace with Electronic Ignition	S	S	S	S	S
Heater — Rear Auxiliary Automotive with Electric Water Valve	S	S	S	S	S

## ELECTRICAL

30 Amp Electrical Service	S	S	S	S	S
50 Amp Service with EMS	O	O	O	O	O
Batteries — Dual RV 27 Deep Cycle Auxiliary (12 Volt)	S	S	S	S	S
Batteries — Upgrade to 2 x 6 Volt Coach Batteries	O	O	O	O	O
Bidirectional Isolator Relay Delay (BIRD) Battery Charging	S	S	S	S	S
Converter — 120/12 Volt with Charger and Changeover Relay	S	S	S	S	S
Energy Management System (EMS) for Standard 30 Amp Service	O	O	O	O	O
Generator — 5.5 KW Onan Marquis Gold with Dash Mounted Hour Meter and Auto Changeover Switch	S	S	S	S	S
Inverter — 2000 Watt Inverter with 100 Amp Charger with Freedom Remote (requires 50 amp service)	O	O	O	O	O
Pre-Wire — Solar Panel	S	S	S	S	S
Switch — Electronic Battery Disconnect (Coach Batteries)	S	S	S	S	S

## PLUMBING AND LP SYSTEMS

Black Tank Flush System	S	S	S	S	S
Holding Tanks — Enclosed, Insulated and Dual Heated Waste Tanks	S	S	S	S	S
LP Tank — Easy Access Propane Tank	S	S	S	S	S
Panel — Systems Monitor	S	S	S	S	S
Roughed in Plumbing for Washer Dryer	-	S	-	S	-
Switch — 3 Way Water Pump Switch	S	S	S	S	S
Valve — Water Heater By-Pass	S	S	S	S	S
Water Heater — Electronic Ignition LP Gas/Electric/Motoraid	S	S	S	S	S
Water Purifier — Faucet in Galley	S	S	S	S	S
Water Tank — Enclosed, Insulated and Dual Heated	S	S	S	S	S
Water Tank Fill and Bleach Port	S	S	S	S	S
Winterization System with Antifreeze Pickup	S	S	S	S	S

## SYSTEMS

Central Vacuum with Outlet in Baggage Compartment	S	S	S	S	S
Washer/Dryer (vented) (requires EMS with Either 30 or 50 amp service)	-	O	-	O	-
Rear-View Camera/Monitor — Colour LCD Display Mounted in Dash	S	S	S	S	S

## OPTIONAL AWNING PACKAGES

Awning — Weathershield Equipped A&E 2 Step Patio with Black Hardware, Acrylic (length shown)	14	15	15	18	-
Awning — Weathershield Equipped A&E Elite Slide Topper (number of awnings shown)	2	2	2	2	-
Awning — Weathershield Equipped A&E Elite Window Awnings	3	3	3	2	-
Awning — Weathershield Equipped Carefree Patio with Black Hardware	-	-	-	-	18
Awning — Weathershield Equipped Carefree Slide Topper (number of awnings shown)	-	-	-	-	3
Awning — Weathershield Equipped Carefree Elite Window Awnings	-	-	-	-	1

Factory P.D.I.

0	0	0	0	0
---	---	---	---	---

New for 2005 S Standard O Optional



## Coach Net

Triple E is a proud partner of Coach Net, an extensive support program providing complete and fully paid roadside assistance, emergency road service, and special warranty support benefits that follow you throughout Canada and the U.S. Service is free for the first year of ownership and available at a nominal fee for subsequent years.

### COACH NET'S 24-HOUR CUSTOMER CARE INCLUDES

- Emergency roadside assistance – including tow vehicle
- Toll free technician hotline for operation and service support
- Toll free nationwide service appointment assistance
- Free custom trip routing and colour maps
- Warranty service at over 6,800 locations throughout North America
- Benefits such as free jump starts, tire changes, fuel delivery and lock out service

## 2 Year Limited Warranty

Triple E is proud to offer a 2 year limited warranty on structure as well as most major components. Please see your dealer for further details.

## A reputation for excellence since 1965

For forty years Triple E has produced style, comfort, durability and uncompromising quality in recreation vehicles. We've built our reputation by maintaining full control of the manufacturing process, and almost everything you see in the finished product has been built on site to our renowned high standards, plus those of the Canadian Standards Association or Recreational Vehicle Industry Association. Triple E was also one of the first RV manufacturers to achieve ISO 9001 certification. If you demand the best in your RV, you've found it in Triple E.



*Founder P.W. Enns  
with the first Triple E  
Class A motorhome.*



*The first Triple E  
13' travel trailer  
manufactured  
in 1965.*



RECREATIONAL VEHICLES

[www.tripleerv.com](http://www.tripleerv.com)

Triple E Recreational Vehicles P.O. Box 1230, Winkler, Manitoba, Canada R6W 4C4 Telephone: (204) 325-4361 Fax: (204) 325-5241



Triple E Recreational Vehicles meet or surpass CSA-CRVA-RVIA standards covering electrical services, gas services, plumbing services and vehicular safety. Commander Motorhomes exceed 96" in width. In some states, 96" is the maximum width of vehicles travelling some or all state roads. It is the responsibility of the owner to be familiar with the road usage laws of the states in which you travel. Product improvement is a continuing process at Triple E Recreational Vehicles. Thus, we reserve the right to change specifications on any or all products without prior notice; errors and omissions excepted. Triple E Recreational Vehicles is under no obligation to undertake modification to units manufactured prior to changes on specifications. Brochure pictures may be shown with optional equipment. Colours may not be exactly as shown due to the printing process. Please see your dealer for specific colours.



## Coach Net

Triple E is a proud partner of Coach Net, an extensive support program providing complete and fully paid roadside assistance, emergency road service, and special warranty support benefits that follow you throughout Canada and the U.S. Service is free for the first year of ownership and available at a nominal fee for subsequent years.

### COACH NET'S 24-HOUR CUSTOMER CARE INCLUDES

- Emergency roadside assistance — including tow vehicle
- Toll free technician hotline for operation and service support
- Toll free nationwide service appointment assistance
- Free custom trip routing and colour maps
- Warranty service at over 6,800 locations throughout North America
- Benefits such as free jump starts, tire changes, fuel delivery and lock out service

## 2 Year Limited Warranty

Triple E is proud to offer a 2 year limited warranty on structure as well as most major components. Please see your dealer for further details.

## A reputation for excellence since 1965

For forty years Triple E has produced style, comfort, durability and uncompromising quality in recreation vehicles. We've built our reputation by maintaining full control of the manufacturing process, and almost everything you see in the finished product has been built on site to our renowned high standards, plus those of the Canadian Standards Association or Recreational Vehicle Industry Association. Triple E was also one of the first RV manufacturers to achieve ISO 9001 certification. If you demand the best in your RV, you've found it in Triple E.



*Founder P.W. Enns  
with the first Triple E  
Class A motorhome.*



*The first Triple E  
13' travel trailer  
manufactured  
in 1965.*



RECREATIONAL VEHICLES

[www.tripleerv.com](http://www.tripleerv.com)

Triple E Recreational Vehicles P.O. Box 1230, Winkler, Manitoba, Canada R6W 4C4 Telephone: (204) 325-4361 Fax: (204) 325-5241

ISO 9001  
REGISTERED



Triple E Recreational Vehicles meet or surpass CSA-CRVA-RVIA standards covering electrical services, gas services, plumbing services and vehicular safety. Commander Motorhomes exceed 96" in width. In some states, 96" is the maximum width of vehicles travelling some or all state roads. It is the responsibility of the owner to be familiar with the road usage laws of the states in which you travel. Product improvement is a continuing process at Triple E Recreational Vehicles. Thus, we reserve the right to change specifications on any or all products without prior notice; errors and omissions excepted. Triple E Recreational Vehicles is under no obligation to undertake modification to units manufactured prior to changes on specifications. Brochure pictures may be shown with optional equipment. Colours may not be exactly as shown due to the printing process. Please see your dealer for specific colours.