



# *American Coach*

Born to lead.



AMERICAN EAGLE and AMERICAN TRADITION-Class A Diesel-2006







# *American Coach*

Born to lead.



AMERICAN EAGLE and AMERICAN TRADITION-Class A Diesel-2006





YOU ARE PART OF AN ELITE FEW  
WHO DESERVES SOMETHING MORE. A VEHICLE  
TAILORED TO YOUR EVERY NEED AND  
CRAFTED FROM YOUR OWN EXPERIENCE. YOUR  
VOICE HAS BEEN HEARD. THIS IS YOUR  
ADVENTURE AND IT'S TIME TO TAKE  
ADVANTAGE OF AN AMERICAN TRADITION.



YOU ARE PART OF AN ELITE FEW  
WHO DESERVES SOMETHING MORE. A VEHICLE  
TAILORED TO YOUR EVERY NEED AND  
CRAFTED FROM YOUR OWN EXPERIENCE. YOUR  
VOICE HAS BEEN HEARD. THIS IS YOUR  
ADVENTURE AND IT'S TIME TO TAKE  
ADVANTAGE OF AN AMERICAN TRADITION.















*American Tradition 42R shown in Timepiece interior decor with Windsor Birch wood finish.*





*American Tradition 42R shown in Timepiece interior decor with Windsor Birch wood finish.*





American Tradition

## Designed by you.

Cruise into the world of luxury in true American Tradition. The American Coach line has been crafted from direct input from our proud owners who provide first hand user experience to help us create this luxurious motor coach. Enjoy the ultimate traveling experience with spacious 82" ceilings and relax in style with optional leather furniture for

a one-of-a-kind atmosphere as you cruise ahead. You'll be amazed with all the amenities, like an optional Sony® front 32" and rear 23" High Definition LCD television with Sony® home theater sound system. Tradition is a product of your wants and needs, giving you the traveling experience you've always dreamed of.



**THE NORCOLD® 12 CU. FT. REFRIGERATOR** (optional) features an icemaker, a water dispenser, plenty of shelf room and a sleek brushed aluminum finish.



**THE KITCHEN PANTRY** is spacious enough for non-perishable items with convenient pull-out shelves for easy access (select models).



**OVER-THE-DINETTE STORAGE** has been redesigned to be deeper and now provides more storage for books, board games or anything else you might need on the road.



**UNDER-THE-SINK STORAGE** is specifically designed to store the solid surface sink lids and range covers.



**THE CABINET DOORS** are stylishly crafted with careful detail for a sophisticated and tasteful look.



**THE RECESSED COOK TOP** (optional) features sealed burners to help food and grease from getting in those hard to clean places. The burners are recessed beneath the countertop, giving you a level and continuous surface when the cover is on.





American Tradition

## Designed by you.

Cruise into the world of luxury in true American Tradition. The American Coach line has been crafted from direct input from our proud owners who provide first hand user experience to help us create this luxurious motor coach. Enjoy the ultimate traveling experience with spacious 82" ceilings and relax in style with optional leather furniture for

a one-of-a-kind atmosphere as you cruise ahead. You'll be amazed with all the amenities, like an optional Sony® front 32" and rear 23" High Definition LCD television with Sony® home theater sound system. Tradition is a product of your wants and needs, giving you the traveling experience you've always dreamed of.



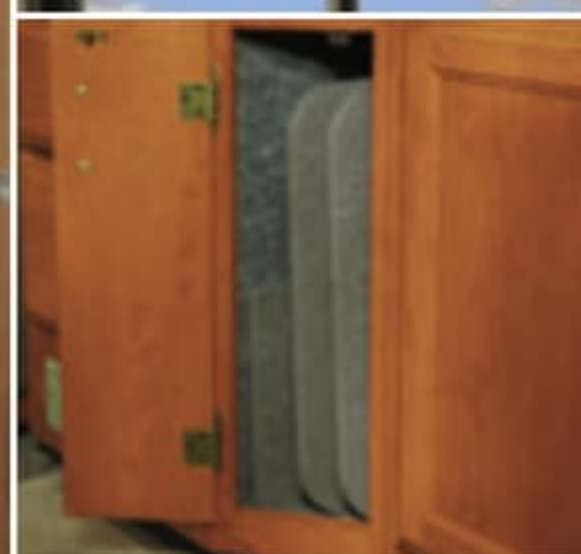
**THE NORCOLD® 12 CU. FT. REFRIGERATOR** (optional) features an icemaker, a water dispenser, plenty of shelf room and a sleek brushed aluminum finish.



**THE KITCHEN PANTRY** is spacious enough for non-perishable items with convenient pull-out shelves for easy access (select models).



**OVER-THE-DINETTE STORAGE** has been redesigned to be deeper and now provides more storage for books, board games or anything else you might need on the road.



**UNDER-THE-SINK STORAGE** is specifically designed to store the solid surface sink lids and range covers.



**THE CABINET DOORS** are stylishly crafted with careful detail for a sophisticated and tasteful look.



**THE RECESSED COOK TOP** (optional) features sealed burners to help food and grease from getting in those hard to clean places. The burners are recessed beneath the countertop, giving you a level and continuous surface when the cover is on.





American Tradition

## Your Suite is Ready.

Tradition continues to deliver the traveling experience of your dreams in this well equipped and alluring bedroom suite. Relaxing in this plush environment couldn't be easier thanks to an amazing queen-sized pillow top mattress. Rest anytime with

day/night shades that offer complete privacy while allowing you to control the amount of natural light entering the room. This is your time to enjoy life. Enjoy it in the comfort you deserve. You've earned it.



**THE BEDROOM ENTERTAINMENT CENTER** features a Sony® 20" TV that sits flush in the cabinetry for a non-intrusive look (upgrade to the optional 23" LCD monitor shown above).



**TRADITION'S WARDROBE AREA** offers plenty of room for clothing and is lined with cedar to keep everything smelling fresh and moth-free.



**THE WASHER/DRYER COMBO** makes doing laundry on the go a breeze, and is easily concealed when not in use.

**THE HARMONY UNIVERSAL REMOTE** comes pre-programmed and controls all the entertainment center components with the push of a button.

**THE GENERATOR START SWITCH** conveniently allows you to turn the generator on or off from the bedroom.



**THE ENCLOSED SHOWER** with an optional reeded glass door looks great and provides plenty of privacy. You'll also enjoy the Moen® hand held extendable shower head and adjustable bar for your convenience.





American Tradition

## Your Suite is Ready.

Tradition continues to deliver the traveling experience of your dreams in this well equipped and alluring bedroom suite. Relaxing in this plush environment couldn't be easier thanks to an amazing queen-sized pillow top mattress. Rest anytime with

day/night shades that offer complete privacy while allowing you to control the amount of natural light entering the room. This is your time to enjoy life. Enjoy it in the comfort you deserve. You've earned it.



**THE BEDROOM ENTERTAINMENT CENTER** features a Sony® 20" TV that sits flush in the cabinetry for a non-intrusive look (upgrade to the optional 23" LCD monitor shown above).



**TRADITION'S WARDROBE AREA** offers plenty of room for clothing and is lined with cedar to keep everything smelling fresh and moth-free.



**THE WASHER/DRYER COMBO** makes doing laundry on the go a breeze, and is easily concealed when not in use.

**THE HARMONY UNIVERSAL REMOTE** comes pre-programmed and controls all the entertainment center components with the push of a button.

**THE GENERATOR START SWITCH** conveniently allows you to turn the generator on or off from the bedroom.



**THE ENCLOSED SHOWER** with an optional reeded glass door looks great and provides plenty of privacy. You'll also enjoy the Moen® hand held extendable shower head and adjustable bar for your convenience.













American Tradition

## Step into Comfort.

At the heart of Tradition is its unprecedented style combined with user-friendly options and amenities to make your adventures both memorable and effortless. Explore however you like, travel at your own pace

and take advantage of all Tradition has to offer. Kick your feet up, take a deep breath and let your worries fade away. You've made it. Now all you have to do is enjoy.

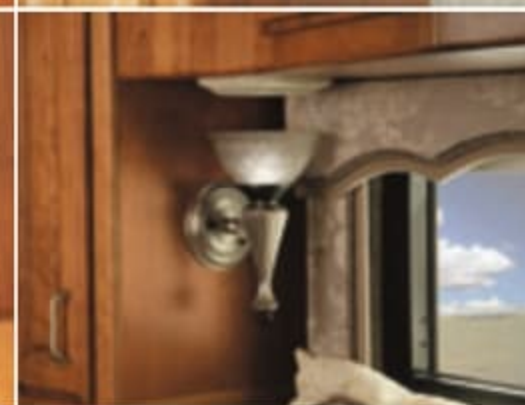


**THE FRONT ENTERTAINMENT CENTER**  
Includes a 24" flat-screen monitor with a home theater sound system transforming your coach into an amazing movie theater (shown w/optional 32" LCD monitor).



**THE ENERGY SYSTEM PROTECTION (ESP)**  
acts as a surge protector for the generator and utility power outputs. This helps to eliminate blown fuses and prevents damage from power surges.

**MULTIPLEXED SWITCHES**  
controls lighting and are illuminated for convenience at night.



**RECESSED SPEAKERS**  
are subtle and hidden out of the way for a clean and sophisticated look.

**ELEGANT LIGHT FIXTURES**  
are a nice touch for an aesthetically pleasing atmosphere.



**THE ENTRY DOOR**  
features a lighted handle for entry and egress assist. An electric door awning protects you from the elements while the pneumatic entry door air lock minimizes air noise and wind intrusion while you are on the road.





## American Tradition

### Step into Comfort.

At the heart of Tradition is its unprecedented style combined with user-friendly options and amenities to make your adventures both memorable and effortless. Explore however you like, travel at your own pace

and take advantage of all Tradition has to offer. Kick your feet up, take a deep breath and let your worries fade away. You've made it. Now all you have to do is enjoy.



**THE FRONT ENTERTAINMENT CENTER** includes a 24" flat-screen monitor with a home theater sound system transforming your coach into an amazing movie theater (shown w/optional 32" LCD monitor).



**THE ENERGY SYSTEM PROTECTION (ESP)** acts as a surge protector for the generator and utility power outputs. This helps to eliminate blown fuses and prevents damage from power surges.

**MULTIPLEXED SWITCHES** controls lighting and are illuminated for convenience at night.



**RECESSED SPEAKERS** are subtle and hidden out of the way for a clean and sophisticated look.

**ELEGANT LIGHT FIXTURES** are a nice touch for an aesthetically pleasing atmosphere.



**THE ENTRY DOOR** features a lighted handle for entry and egress assist. An electric door awning protects you from the elements while the pneumatic entry door air lock minimizes air noise and wind intrusion while you are on the road.



#### ELECTRIC AWNING WITH WIND SENSOR

is retractable with the push of a button, providing shelter from the elements. An intuitive wind sensor (optional) will automatically retract the patio awning in winds over the specified setting. Rain or shine, camp in comfort and style.

#### A TWO-STAGE DUPONT® PAINT PROCESS

is carefully applied to give the exterior a sleek look and beautiful shine. This process ensures only the best in quality and appearance.

#### SIDE HINGED LUGGAGE DOORS

open sideways, providing easy access to stored items.



\*Vehicle shown in White Diamond.

#### ONE PIECE WINDSHIELD

with top mounted windshield wipers looks fantastic and gives the driver and passenger an unobstructed view of the road.

#### AN ACRYLIC SHIELD

(optional) provides great protection for the front cap of your Tradition from road debris.

#### DUAL FUEL FILLS

make refueling more convenient by providing access on either side of the coach.



#### THE ONAN® 7.5 KW QUIET DIESEL MANUAL SLIDE GENERATOR

moves away from the front cap, giving you access to easily adjust fluid levels and monitor your generator. 10.0kW generator offered on 42 ft. models.



#### THE UTILITY COMPARTMENT

provides a central place to change your whole-coach water filter, empty your holding tanks and access the water sprayer.

#### EXTERIOR STORAGE COMPARTMENTS

are designed for increased storage capacity and feature optional pullout storage trays for easy access to stored items.



#### TRADITION

now comes standard with a 400HP diesel engine, featuring a side-mounted radiator for the ultimate towing power.

#### SPECIALLY DESIGNED DURABLE HINGE PINS

lock the exterior compartments in the open position.



#### THE DRIVER'S AREA

features a telescoping and tilting steering wheel, adjustable brake and throttle pedals, 3-point integrated seat belts, rear vision camera with one-way audio to make communication easy while backing up, easy to read backlit gauges, an easy-to-operate AM/FM radio with CD player, an optional color GPS navigation system so you'll always be able to find your way and optional Sirius® satellite radio including a 6-month subscription.



#### THE STYLISH REAR CAP

features high mounted taillights that can be seen by other drivers even while you're towing another vehicle, a convenient 2-piece ladder giving you access to the roof for maintenance and stylish chrome, full-width rear rock guard.



#### ELECTRIC AWNING WITH WIND SENSOR

is retractable with the push of a button, providing shelter from the elements. An intuitive wind sensor (optional) will automatically retract the patio awning in winds over the specified setting. Rain or shine, camp in comfort and style.

#### A TWO-STAGE DUPONT® PAINT PROCESS

is carefully applied to give the exterior a sleek look and beautiful shine. This process ensures only the best in quality and appearance.

#### SIDE HINGED LUGGAGE DOORS

open sideways, providing easy access to stored items.



\*Vehicle shown in White Diamond.

#### ONE PIECE WINDSHIELD

with top mounted windshield wipers looks fantastic and gives the driver and passenger an unobstructed view of the road.

#### AN ACRYLIC SHIELD

(optional) provides great protection for the front cap of your Tradition from road debris.

#### DUAL FUEL FILLS

make refueling more convenient by providing access on either side of the coach.



#### THE ONAN® 7.5 KW QUIET DIESEL MANUAL SLIDE GENERATOR

moves away from the front cap, giving you access to easily adjust fluid levels and monitor your generator. 10.0kW generator offered on 42 ft. models.



#### THE UTILITY COMPARTMENT

provides a central place to change your whole-coach water filter, empty your holding tanks and access the water sprayer.

#### EXTERIOR STORAGE COMPARTMENTS

are designed for increased storage capacity and feature optional pullout storage trays for easy access to stored items.



#### TRADITION

now comes standard with a 400HP diesel engine, featuring a side-mounted radiator for the ultimate towing power.

#### SPECIALLY DESIGNED DURABLE HINGE PINS

lock the exterior compartments in the open position.



#### THE DRIVER'S AREA

features a telescoping and tilting steering wheel, adjustable brake and throttle pedals, 3-point integrated seat belts, rear vision camera with one-way audio to make communication easy while backing up, easy to read backlit gauges, an easy-to-operate AM/FM radio with CD player, an optional color GPS navigation system so you'll always be able to find your way and optional Sirius® satellite radio including a 6-month subscription.



#### THE STYLISH REAR CAP

features high mounted taillights that can be seen by other drivers even while you're towing another vehicle, a convenient 2-piece ladder giving you access to the roof for maintenance and stylish chrome, full-width rear rock guard.





## AMERICAN TRADITION INTERIOR DECOR

Mix and match between five interior decor motifs and four wood finishes to create the vehicle that's right for you.

### RAFFIA STONE TAUPE

#### Living Room/Dining Room



Optional Leather Sofa Sleeper & Loveseat



Sofa Sleeper, Loveseat & Throw Pillows



Dinette Cushions

#### Bedroom



Bedspread & Pillow Shams



Throw Pillows

### CHOCOLATE CARAMEL

#### Living Room/Dining Room



Optional Leather Sofa Sleeper & Loveseat



Sofa Sleeper, Loveseat & Dinette Cushions



Throw Pillows

#### Bedroom



Bedspread



Pillow Shams



Throw Pillows

### MOCHA CHINO

#### Living Room/Dining Room



Optional Leather Sofa Sleeper & Loveseat



Sofa Sleeper, Loveseat & Dinette Cushions



Throw Pillows

#### Bedroom



Bedspread



Pillow Shams & Throw Pillows

### ALUMINUM SLATE

#### Living Room/Dining Room



Optional Leather Sofa Sleeper & Loveseat



Sofa Sleeper, Loveseat & Dinette Cushions



Throw Pillows

#### Bedroom



Bedspread



Pillow Shams



Throw Pillows

### WILLOW WIND

#### Living Room/Dining Room



Optional Leather Sofa Sleeper & Loveseat



Sofa Sleeper, Loveseat & Throw Pillows



Dinette Cushions

#### Bedroom



Bedspread & Throw Pillows



Pillow Shams

## INTERIOR WOOD FINISHES



Regency Cherry



Clear White Maple



Windsor Birch



Anderson Walnut





## AMERICAN TRADITION INTERIOR DECOR

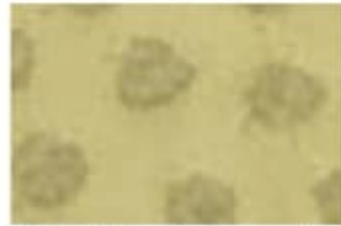
Mix and match between five interior decor motifs and four wood finishes to create the vehicle that's right for you.

### RAFFIA STONE TAUPE

#### Living Room/Dining Room



Optional Leather Sofa Sleeper & Loveseat



Sofa Sleeper, Loveseat & Throw Pillows



Dinette Cushions

#### Bedroom



Bedspread & Pillow Shams



Throw Pillows

### CHOCOLATE CARAMEL

#### Living Room/Dining Room



Optional Leather Sofa Sleeper & Loveseat



Sofa Sleeper, Loveseat & Dinette Cushions



Throw Pillows

#### Bedroom



Bedspread



Pillow Shams



Throw Pillows

### MOCHA CHINO

#### Living Room/Dining Room



Optional Leather Sofa Sleeper & Loveseat



Sofa Sleeper, Loveseat & Dinette Cushions



Throw Pillows

#### Bedroom



Bedspread



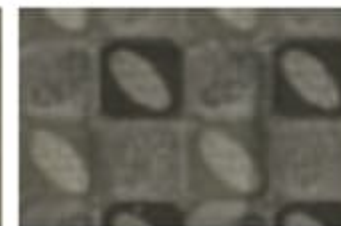
Pillow Shams & Throw Pillows

### ALUMINUM SLATE

#### Living Room/Dining Room



Optional Leather Sofa Sleeper & Loveseat



Sofa Sleeper, Loveseat & Dinette Cushions

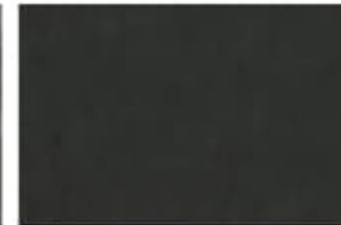


Throw Pillows

#### Bedroom



Bedspread



Pillow Shams



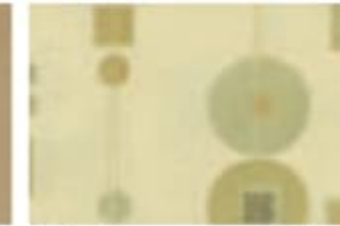
Throw Pillows

### WILLOW WIND

#### Living Room/Dining Room



Optional Leather Sofa Sleeper & Loveseat



Sofa Sleeper, Loveseat & Throw Pillows



Dinette Cushions

#### Bedroom



Bedspread & Throw Pillows



Pillow Shams

## INTERIOR WOOD FINISHES



Regency Cherry



Clear White Maple



Windsor Birch



Anderson Walnut



## AMERICAN TRADITION EXTERIOR GRAPHICS

After selecting your favorite interior, choose between six exterior graphic options to customize your Tradition.



*Crystal Alloy*



*Newport Blue*



*Acadia Green*



*Manhattan Beige*



*White Diamond*



*Desert Wind*



## AMERICAN TRADITION EXTERIOR GRAPHICS

After selecting your favorite interior, choose between six exterior graphic options to customize your Tradition.



*Crystal Alloy*



*Newport Blue*



*Acadia Green*



*Manhattan Beige*



*White Diamond*



*Desert Wind*



ENJOY THE FRUITS OF YOUR LABOR AND  
EXPERIENCE LUXURY FROM A NEW PERSPECTIVE.  
EXPLORE ANYWHERE YOU PLEASE IN  
SUPREME COMFORT AND ALWAYS ARRIVE IN STYLE.  
THIS IS YOUR TIME TO ENJOY HOWEVER  
YOU LIKE. TRAVEL PROUD. ANYTHING IS  
POSSIBLE IN AMERICAN EAGLE.





ENJOY THE FRUITS OF YOUR LABOR AND

EXPERIENCE LUXURY FROM A NEW PERSPECTIVE.

EXPLORE ANYWHERE YOU PLEASE IN

SUPREME COMFORT AND ALWAYS ARRIVE IN STYLE.

THIS IS YOUR TIME TO ENJOY HOWEVER

YOU LIKE. TRAVEL PROUD. ANYTHING IS

POSSIBLE IN AMERICAN EAGLE.















American Eagle 42B shown in Cashmere interior decor with Regency Cherry wood finish.





*American Eagle 42B shown in Cashmere interior decor with Regency Cherry wood finish.*



## Simply Incredible.

American Eagle simply speaks for itself. In one word, luxury. This remarkable motor coach is sophisticated, tasteful and sure to turn heads as you travel until your heart's content. Eagle is designed to cater to your every need and make your travels as comfortable and enjoyable as possible. Marvel at all the amenities like beautiful

hardwood drawers with dovetail joints and full extension drawer guides, a redesigned ceiling plenum for an improved look, comfortable leather furniture and elegant solid surface countertops throughout. Eagle is dressed to impress. It's a one-of-a-kind vehicle for a one of a kind adventure in pure comfort.



**OVERHEAD GALLEY CABINETS** feature adjustable shelves, a scratch proof lining and are deep enough to easily store full-sized plates and dishes.



**THE INSTA-HOT WATER SPOUT** (optional) is a wonderful perk to have on the road that provides 60 cups of hot water per hour for soup, tea or coffee.

**SPILL PROOF COUNTERTOP EDGE** provides a small lip, which prevents spills.



**THE RECESSED KITCHENAID® COOK TOP** (optional) features two sealed burners (one low, one high output) to help food and grease from getting in those hard to clean places. The tempered glass cook top surface is stylish and easy to clean.



**NORCOLD® EXTERIOR REFRIGERATOR OR FREEZER** (optional) conveniently slides out from the exterior compartment and is a great place to store cold drinks or frozen steaks for your barbecues.



**EXQUISITE DIAGONALLY LAID TILE FLOORING** is aesthetically pleasing, easy to clean and durable.



**THE GE ADVANTIUM® CONVECTION MICROWAVE OVEN** utilizes halogen light, which cooks up to 4 times faster than a traditional microwave.



**THE CUTTING BOARD** is a convenient feature to have on the road for slicing and dicing and easily stows away when not in use.



## Simply Incredible.

American Eagle simply speaks for itself. In one word, luxury. This remarkable motor coach is sophisticated, tasteful and sure to turn heads as you travel until your heart's content. Eagle is designed to cater to your every need and make your travels as comfortable and enjoyable as possible. Marvel at all the amenities like beautiful

hardwood drawers with dovetail joints and full extension drawer guides, a redesigned ceiling plenum for an improved look, comfortable leather furniture and elegant solid surface countertops throughout. Eagle is dressed to impress. It's a one-of-a-kind vehicle for a one of a kind adventure in pure comfort.



### OVERHEAD GALLEY CABINETS

feature adjustable shelves, a scratch proof lining and are deep enough to easily store full-sized plates and dishes.



### THE INSTA-HOT WATER SPOUT

(optional) is a wonderful perk to have on the road that provides 60 cups of hot water per hour for soup, tea or coffee.

### SPILL PROOF COUNTERTOP EDGE

provides a small lip, which prevents spills.

### THE RECESSED KITCHENAID® COOK TOP

(optional) features two sealed burners (one low, one high output) to help food and grease from getting in those hard to clean places. The tempered glass cook top surface is stylish and easy to clean.



### NORCOLD® EXTERIOR REFRIGERATOR OR FREEZER

(optional) conveniently slides out from the exterior compartment and is a great place to store cold drinks or frozen steaks for your barbecues.

### EXQUISITE DIAGONALLY LAID TILE FLOORING

is aesthetically pleasing, easy to clean and durable.



### THE GE ADVANTIUM® CONVECTION MICROWAVE OVEN

utilizes halogen light, which cooks up to 4 times faster than a traditional microwave.

### THE CUTTING BOARD

is a convenient feature to have on the road for slicing and dicing and easily stows away when not in use.







American Eagle

## Five Star Suite.

Eagle's incredible five star suite really is as good as it looks. In fact, it's better. This inviting bedroom layout is the epitome of style and grace. Enjoy handsome solid wood cabinetry, plush wall-to-wall Fabrica® carpeting and the exquisite

queen-sized pillow top mattress, making it easy to drift off to dream land (king-size bed shown is optional). This stunning and luxurious bedroom setup is nothing short of breathtaking. You may never want to go home again.



### THE ELEGANT, ETCHED GLASS ENCLOSED SHOWER

boasts a top-of-the-line Moen® hand-held showerhead and shower caddy, providing the convenience of home.



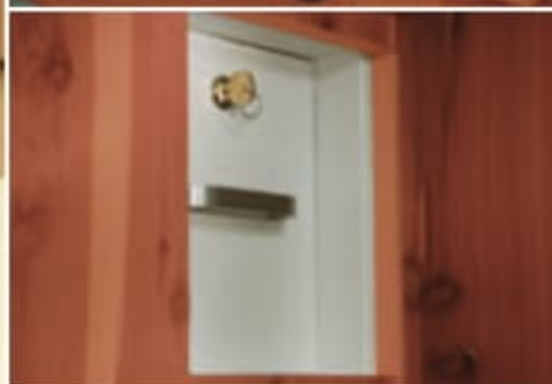
### THE BEDROOM ENTERTAINMENT CENTER

includes a Sony® 23" flat panel LCD monitor (Sony® 32" flat panel LCD monitor and Bose® 3-2-1 surround sound system shown above are optional).



### KEYLESS ENTRY REMOTE SWITCH

allows you to lock or unlock your coach with the push of a button from the bedroom.



### THE BEDROOM WALL SAFE

is a wonderful feature for protecting your valuables when you are away from your vehicle.



### THE WARDROBE CLOSET

is available in various configurations of shirt wards, full-length wards and drawer storage. The wardrobe is also deep enough to accommodate full-sized hangers and is lined with cedar to keep clothing smelling fresh and moth-free.





American Eagle

## Five Star Suite.

Eagle's incredible five star suite really is as good as it looks. In fact, it's better. This inviting bedroom layout is the epitome of style and grace. Enjoy handsome solid wood cabinetry, plush wall-to-wall Fabrica® carpeting and the exquisite

queen-sized pillow top mattress, making it easy to drift off to dream land (king-size bed shown is optional). This stunning and luxurious bedroom setup is nothing short of breathtaking. You may never want to go home again.



**THE ELEGANT, ETCHED GLASS ENCLOSED SHOWER** boasts a top-of-the-line Moen® hand-held showerhead and shower caddy, providing the convenience of home.

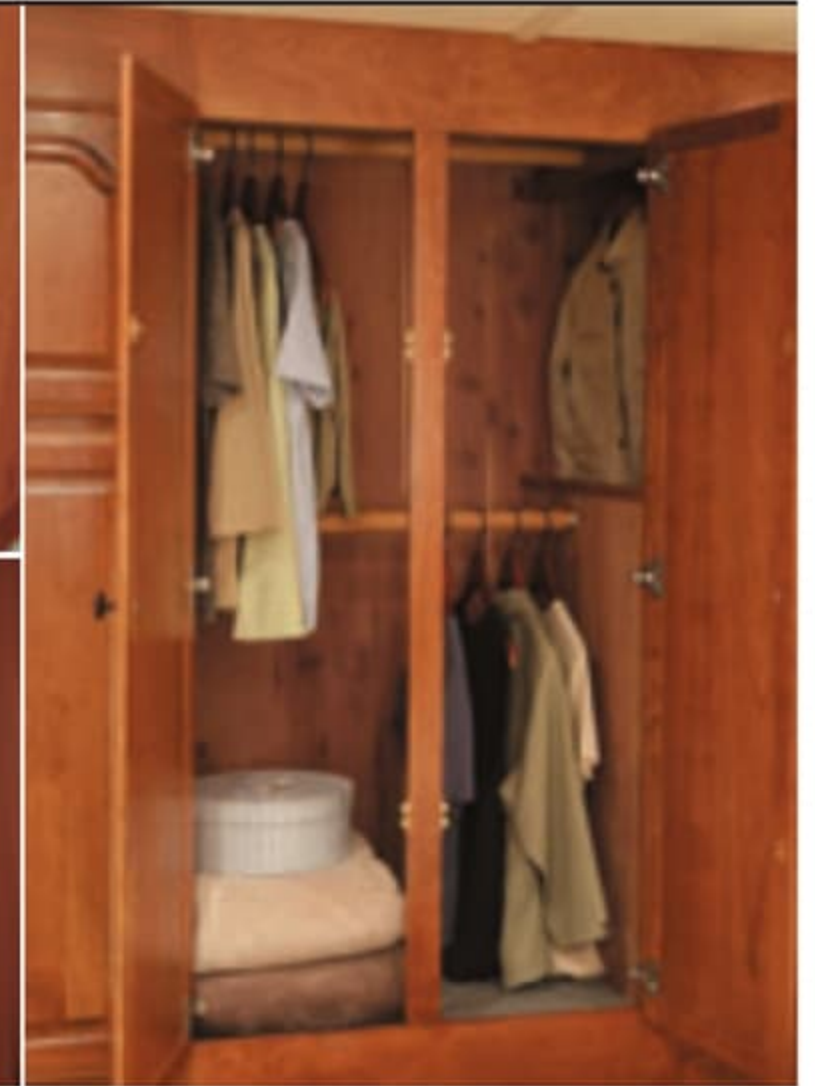


**THE BEDROOM ENTERTAINMENT CENTER** includes a Sony® 23" flat panel LCD monitor (Sony® 32" flat panel LCD monitor and Bose® 3-2-1 surround sound system shown above are optional).



**KEYLESS ENTRY REMOTE SWITCH** allows you to lock or unlock your coach with the push of a button from the bedroom.

**THE BEDROOM WALL SAFE** is a wonderful feature for protecting your valuables when you are away from your vehicle.



**THE WARDROBE CLOSET** is available in various configurations of shirt wards, full-length wards and drawer storage. The wardrobe is also deep enough to accommodate full-sized hangers and is lined with cedar to keep clothing smelling fresh and moth-free.













## The Lap of Luxury.

What more could you ask for while exploring the road ahead? Eagle showers you with luxury you could only once imagine possible while you travel. You have worked hard for a life of simple pleasures and American

Eagle works hard so you can enjoy the road ahead. You deserve only the best and Eagle makes sure that's exactly what you get. Take a good look and explore at will. It doesn't get any better than this.



**THE FLEXSTEEL® PASSENGER SEAT** features soft luxurious leather with lumbar support, 6-way power adjustments and 3 point integrated seat belts.



**THE LEATHER FLEXSTEEL® SOFA** provides unmatched comfort with soft and luxurious leather for enjoying the road like never before.



**SONY® FRONT 37" LCD FLAT PANEL HDTV** (optional) coupled with the optional In-Motion Satellite and home theater sound system is the ultimate entertainment piece to have on the road for a one-of-a-kind movie theater experience.





## The Lap of Luxury.

What more could you ask for while exploring the road ahead? Eagle showers you with luxury you could only once imagine possible while you travel. You have worked hard for a life of simple pleasures and American

Eagle works hard so you can enjoy the road ahead. You deserve only the best and Eagle makes sure that's exactly what you get. Take a good look and explore at will. It doesn't get any better than this.



**THE FLEXSTEEL® PASSENGER SEAT** features soft luxurious leather with lumbar support, 6-way power adjustments and 3 point integrated seat belts.



**THE LEATHER FLEXSTEEL® SOFA** provides unmatched comfort with soft and luxurious leather for enjoying the road like never before.



**SONY® FRONT 37" LCD FLAT PANEL HDTV** (optional) coupled with the optional In-Motion Satellite and home theater sound system is the ultimate entertainment piece to have on the road for a one-of-a-kind movie theater experience.



#### THE ELECTRIC PATIO AWNING

is retractable with the push of a button, providing shelter from the elements. Girard electric awning package (optional) includes patio, entry door and bedroom window awnings. Rain or shine, camp in comfort with this top of the line feature.

#### A TWO STAGE DUPONT® PAINT PROCESS

is carefully applied to give the exterior a sleek look and beautiful shine. This process ensures only the best in quality and appearance.

#### ALUMINUM WHEELS

provide a sleek and classic look to the Eagle, enhancing curb appeal.



**ELECTRIC ENTRY DOOR AWNING**  
is one-touch and easy to operate.

**EXTERIOR CHROME MIRRORS**  
are heated so they won't frost over even in cold temperatures.

**TOP OF THE LINE XENON HIGH INTENSITY HEADLIGHTS**  
are brighter than most headlights.

\*Vehicle shown in Newport Blue.



#### THE REAR CAP

is constructed out of beautiful fiberglass and comes standard with a polished stainless steel bumper and integrated rear upper fiberglass wing deflector for an unmistakable look on the road.



**THE ONAN® AUTOMATIC SLIDE GENERATOR**  
effortlessly slides out with the front cap, making it very accessible.



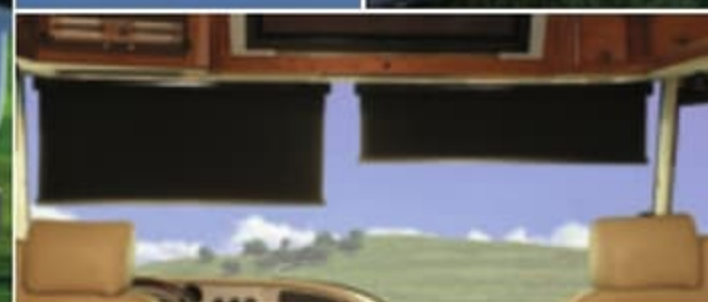
**THE NEW ENTRY STEP**  
is very sturdy and designed to resist flexing. An entry step of this magnitude is typically only offered on the highest end vehicles like American Heritage, until now.



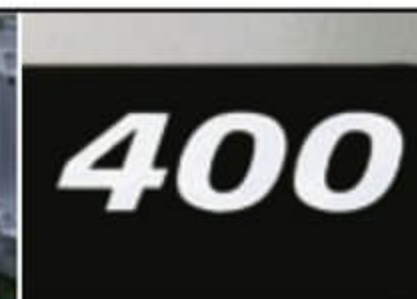
**THE TOUCH PAD ENTRY SYSTEM**  
(optional) allows you to easily lock and unlock your vehicle by conveniently punching in an access code. No keys to mess with.



**EXTERIOR ENTERTAINMENT CENTER**  
(optional) includes a 24" TV on a pullout tray that swivels for easy viewing.



**POWER SUN VISORS**  
provide independent driver and passenger controls to conveniently keep the sun out of your eyes while driving.



**AVAILABLE HORSEPOWER**  
40 ft. models offer a 400HP diesel engine. 42 ft. models offer an incredible 525HP engine, new for '06, giving you even more power for hill climbing.



## THE ELECTRIC PATIO AWNING

is retractable with the push of a button, providing shelter from the elements. Girard electric awning package (optional) includes patio, entry door and bedroom window awnings. Rain or shine, camp in comfort with this top of the line feature.

## A TWO STAGE DUPONT® PAINT PROCESS

is carefully applied to give the exterior a sleek look and beautiful shine. This process ensures only the best in quality and appearance.

## ALUMINUM WHEELS

provide a sleek and classic look to the Eagle, enhancing curb appeal.



**ELECTRIC ENTRY DOOR AWNING**  
is one-touch and easy to operate.

**EXTERIOR CHROME MIRRORS**  
are heated so they won't frost over even in cold temperatures.

**TOP OF THE LINE XENON HIGH INTENSITY HEADLIGHTS**  
are brighter than most headlights.

\*Vehicle shown in Newport Blue.



## THE REAR CAP

is constructed out of beautiful fiberglass and comes standard with a polished stainless steel bumper and integrated rear upper fiberglass wing deflector for an unmistakable look on the road.



## THE ONAN® AUTOMATIC SLIDE GENERATOR

effortlessly slides out with the front cap, making it very accessible.



## THE NEW ENTRY STEP

is very sturdy and designed to resist flexing. An entry step of this magnitude is typically only offered on the highest end vehicles like American Heritage, until now.



## THE TOUCH PAD ENTRY SYSTEM

(optional) allows you to easily lock and unlock your vehicle by conveniently punching in an access code. No keys to mess with.



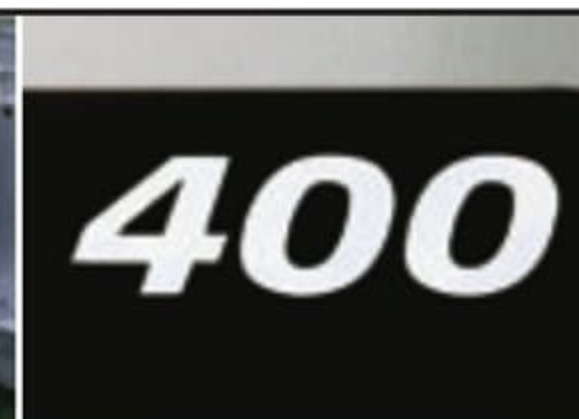
## EXTERIOR ENTERTAINMENT CENTER

(optional) includes a 24" TV on a pullout tray that swivels for easy viewing.



## POWER SUN VISORS

provide independent driver and passenger controls to conveniently keep the sun out of your eyes while driving.



## AVAILABLE HORSEPOWER

40 ft. models offer a 400HP diesel engine. 42 ft. models offer an incredible 525HP engine, new for '06, giving you even more power for hill climbing.





## AMERICAN EAGLE INTERIOR DECOR

Mix and match between eight interior decor motifs, and four wood finishes to create the vehicle that's right for you.

### TIMELESS TAUPE

Living Room/Dining Room



Leather Sofa Sleeper & Loveseat

Dinette Cushions

Throw Pillows

Bedroom



Bedspread & Pillow Shams

Throw Pillows

### ALUMINUM SLATE

Living Room/Dining Room



Leather Sofa Sleeper & Loveseat

Dinette Cushions

Throw Pillows

Bedroom



Bedspread & Pillow Shams

Throw Pillows

### COBALT\*

Living Room/Dining Room



Leather Sofa Sleeper, Loveseat & Dinette Cushions

Throw Pillows

Bedroom



Bedspread

Pillow Shams

Throw Pillows

\* Decors have contemporary furniture styling.

### MOCHA SKY

Living Room/Dining Room



Leather Sofa Sleeper & Loveseat

Dinette Cushions

Throw Pillows

Bedroom



Bedspread & Pillow Shams

Throw Pillows

### BELOVED PEARL

Living Room/Dining Room



Leather Sofa Sleeper & Loveseat

Dinette Cushions

Throw Pillows

Bedroom



Bedspread & Pillow Shams

Throw Pillows

### GOLDEN EBONY\*

Living Room/Dining Room



Leather Sofa Sleeper, Loveseat & Dinette Cushions

Throw Pillows

Bedroom



Bedspread

Pillow Shams

Throw Pillows

### HEMATITE VINE

Living Room/Dining Room



Leather Sofa Sleeper & Loveseat

Dinette Cushions

Throw Pillows

Bedroom



Bedspread & Pillow Shams

Throw Pillows

### CHINO MALT

Living Room/Dining Room



Leather Sofa Sleeper & Loveseat

Dinette Cushions

Throw Pillows

Bedroom



Bedspread & Pillow Shams

Throw Pillows

## INTERIOR WOOD FINISHES



Regency Cherry

Clear White Maple



Butterscotch Glaze

Anderson Walnut





## AMERICAN EAGLE INTERIOR DECOR

Mix and match between eight interior decor motifs, and four wood finishes to create the vehicle that's right for you.

### TIMELESS TAUPE

Living Room/Dining Room



Leather Sofa Sleeper & Loveseat



Dinette Cushions



Throw Pillows

Bedroom



Bedspread & Pillow Shams



Throw Pillows

### ALUMINUM SLATE

Living Room/Dining Room



Leather Sofa Sleeper & Loveseat



Dinette Cushions



Throw Pillows

Bedroom



Bedspread & Pillow Shams



Throw Pillows

### COBALT\*

Living Room/Dining Room



Leather Sofa Sleeper, Loveseat & Dinette Cushions



Throw Pillows

Bedroom



Bedspread



Pillow Shams



Throw Pillows

\* Decors have contemporary furniture styling.

### MOCHA SKY

Living Room/Dining Room



Leather Sofa Sleeper & Loveseat



Dinette Cushions



Throw Pillows

Bedroom



Bedspread & Pillow Shams



Throw Pillows

### BELOVED PEARL

Living Room/Dining Room



Leather Sofa Sleeper & Loveseat



Dinette Cushions



Throw Pillows

Bedroom



Bedspread & Pillow Shams



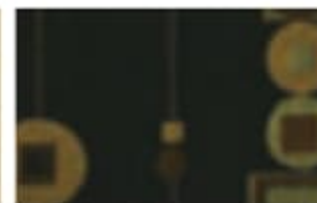
Throw Pillows

### GOLDEN EBONY\*

Living Room/Dining Room



Leather Sofa Sleeper, Loveseat & Dinette Cushions



Throw Pillows

Bedroom



Bedspread



Pillow Shams



Throw Pillows

### HEMATITE VINE

Living Room/Dining Room



Leather Sofa Sleeper & Loveseat



Dinette Cushions



Throw Pillows

Bedroom



Bedspread & Pillow Shams



Throw Pillows

### CHINO MALT

Living Room/Dining Room



Leather Sofa Sleeper & Loveseat



Dinette Cushions



Throw Pillows

Bedroom



Bedspread & Pillow Shams



Throw Pillows

## INTERIOR WOOD FINISHES



Regency Cherry



Clear White Maple



Butterscotch Glaze



Anderson Walnut



## AMERICAN EAGLE EXTERIOR GRAPHICS

Choose from eight dynamic exterior graphics for your American Eagle. These diverse and sleek packages are sure to create road envy.



*White Diamond*



*Ruby Frost*



*Mojave Beige*



*Cypress Sage*



*Newport Blue*



*Royal Plum*



*Crystal Alloy*



*Platinum Slate*



## AMERICAN EAGLE EXTERIOR GRAPHICS

Choose from eight dynamic exterior graphics for your American Eagle. These diverse and sleek packages are sure to create road envy.



*White Diamond*



*Ruby Frost*



*Mojave Beige*



*Cypress Sage*



*Newport Blue*



*Royal Plum*



*Crystal Alloy*



*Platinum Slate*





American Tradition and American Eagle

## Fleetwood® Exclusive.

The American Coach series has a clear advantage over the competition. An advantage in comfort, drivability and overall structural integrity known as the Liberty Chassis, patent pending. This American Coach exclusive absorbs the irregularities of the road thanks to its rigid construction. This one-of-a-kind driving platform utilizes an independent front suspension, unlike most competitors who use

solid front axles, making it harder to maneuver on the road. The Liberty Chassis is also designed with specially placed air bags that work to keep the suspension at the appropriate height, for the smoothest ride possible and a driving experience you simply can't get anywhere else. Always innovating, always leading and truly driven to explore.



### THE DRIVER'S AREA

helps to make even the longest trips comfortable with abundant headroom, adjustable pedals to accommodate drivers of all sizes, easy to read backlit gauges and a compass & exterior temperature gauge.



### HYDRAULIC, AUTOMATIC LEVELING SYSTEM

is a simple one-button activation to level your coach when parked on an uneven surface (optional air leveling available).

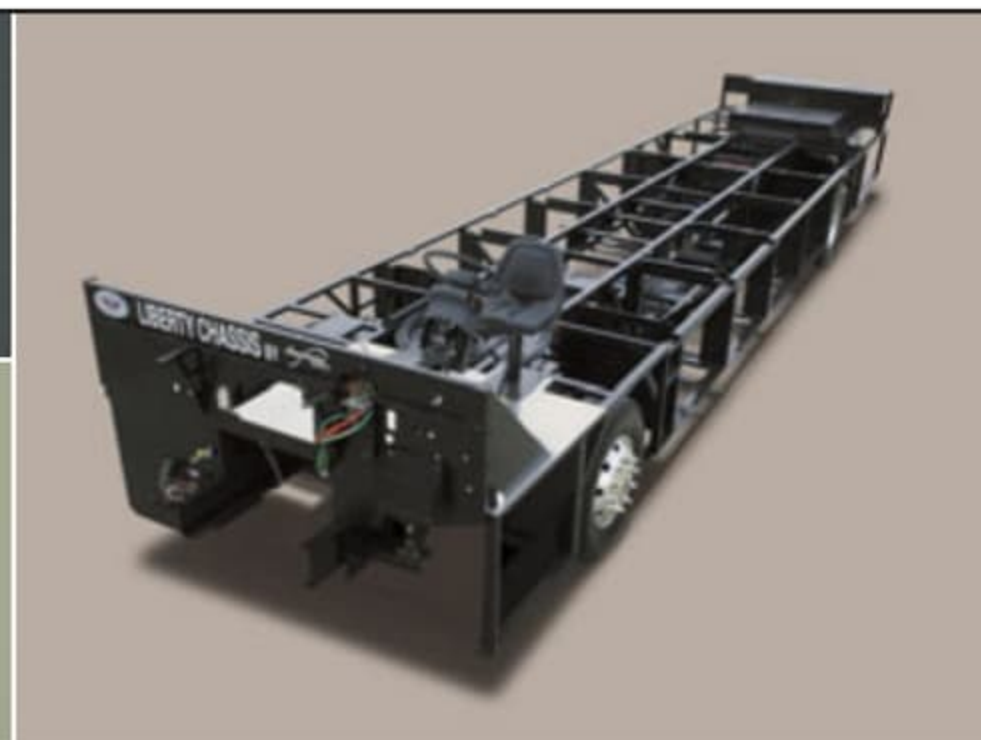
**THE GPS SYSTEM WITH TRIP TEK** (optional) provides the driver with important trip data, directions and precise location. Both are featured in the back up monitor to keep your dash uncluttered and ergonomic.



### THE VORAD SYSTEM

(optional on Eagle only) is a state of the art collision avoidance warning system with adaptive cruise control that can detect vehicles on the road by utilizing forward and side radar.

**THE SIDE-VIEW CAMERA** (optional on Eagle only) is turn signal-activated and provides a video feed to the rear vision monitor that provides additional visibility.



### LIBERTY CHASSIS

1. **Huge 15,000 lbs. Towing Capacity.** Easily tows your favorite vehicle.
2. **Laminated Storage Liners.** Easy to maintain, neat, clean look, durable.
3. **Electro-Coated Structure.** Protects against corrosion. Enhances longevity, quality and reliability.
4. **All Steel Structure.** Minimizes flex, enhances driving experience, strength and longevity.
5. **Center-Mounted Fuel Tank.** Improved weight distribution.
6. **Independent Front Suspension w/55 Degree Turning Radius.** Optimum handling, enhances driving experience.





American Tradition and American Eagle

## Fleetwood® Exclusive.

The American Coach series has a clear advantage over the competition. An advantage in comfort, drivability and overall structural integrity known as the Liberty Chassis, patent pending. This American Coach exclusive absorbs the irregularities of the road thanks to its rigid construction. This one-of-a-kind driving platform utilizes an independent front suspension, unlike most competitors who use

solid front axles, making it harder to maneuver on the road. The Liberty Chassis is also designed with specially placed air bags that work to keep the suspension at the appropriate height, for the smoothest ride possible and a driving experience you simply can't get anywhere else. Always innovating, always leading and truly driven to explore.



### THE DRIVER'S AREA

helps to make even the longest trips comfortable with abundant headroom, adjustable pedals to accommodate drivers of all sizes, easy to read backlit gauges and a compass & exterior temperature gauge.



### HYDRAULIC, AUTOMATIC LEVELING SYSTEM

is a simple one-button activation to level your coach when parked on an uneven surface (optional air leveling available).

### THE GPS SYSTEM WITH TRIP TEK

(optional) provides the driver with important trip data, directions and precise location. Both are featured in the back up monitor to keep your dash uncluttered and ergonomic.

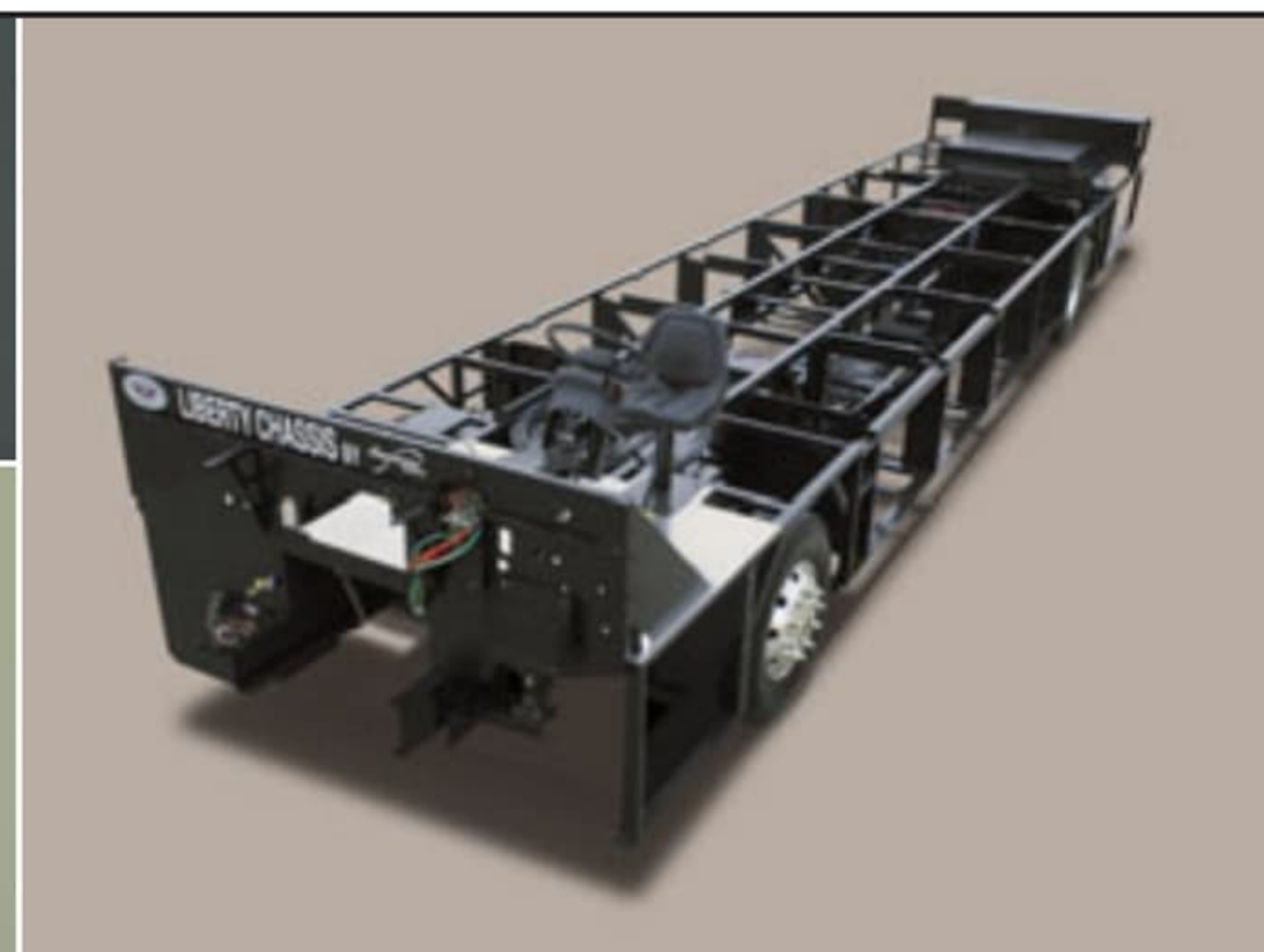


### THE VORAD SYSTEM

(optional on Eagle only) is a state of the art collision avoidance warning system with adaptive cruise control that can detect vehicles on the road by utilizing forward and side radar.

### THE SIDE-VIEW CAMERA

(optional on Eagle only) is turn signal-activated and provides a video feed to the rear vision monitor that provides additional visibility.



### LIBERTY CHASSIS

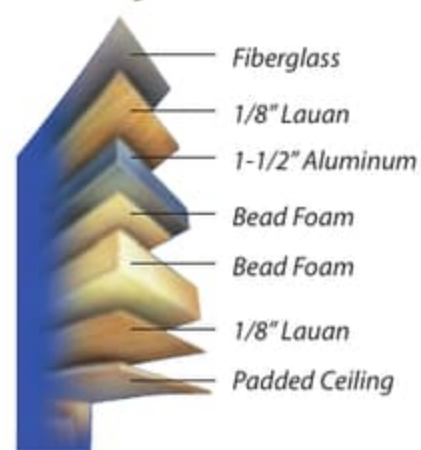
- Huge 15,000 lbs. Towing Capacity.** Easily tows your favorite vehicle.
- Laminated Storage Liners.** Easy to maintain, neat, clean look, durable.
- Electro-Coated Structure.** Protects against corrosion. Enhances longevity, quality and reliability.
- All Steel Structure.** Minimizes flex, enhances driving experience, strength and longevity.
- Center-Mounted Fuel Tank.** Improved weight distribution.
- Independent Front Suspension w/55 Degree Turning Radius.** Optimum handling, enhances driving experience.



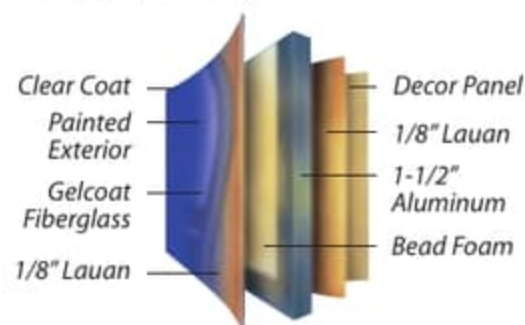
## LIKE NOTHING ELSE.

When American Coach set out to design the ultimate touring vehicle, we left nothing to chance. In order to create an RV that was truly superior to the competition, a rigorous testing process was created to ensure that the series functioned high above the curve, giving you the driving experience of a lifetime; and we succeeded. American Coach's patented Vacu-bond® process takes the numerous components of the sidewalls, flooring and roof, and seals them in a vacuum to produce a single, solid structure with unmatched strength and integrity. If that wasn't enough, we then used aluminum framing to further strengthen the vehicle's structure and create a large carrying capacity. The lightweight aluminum design improves overall strength while helping to maintain a smooth and seamless ride. We only settle for the best, and with American Coach, we've given it to you.

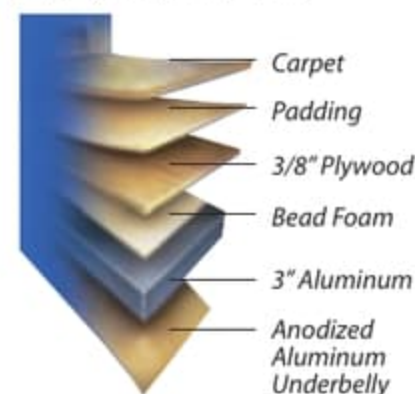
**Ceiling Construction with Fiberglass Roof**



**Sidewall Construction with Exterior Fiberglass**



**Floor Construction with Enclosed Underbelly**



## OUR PROMISE.

In one word, quality. The American Coach team is passionate about understanding each of our proud owners. Customer's wants, needs and suggestions are carefully scrutinized until the product meets or exceeds their standards. Always improving, constantly evolving and never satisfied, that is American Coach.

**SERVICE:** Our team of experts travel to countless rallies across the nation to provide world class service. Through this process, they get to know customers first hand, and in turn, deliver the highest level of service and satisfaction.

**PLANT TOURS:** Our doors are always open to those who call American Coach home. We welcome you to call 800-648-6582 for more information, or to set up a time to come visit us.

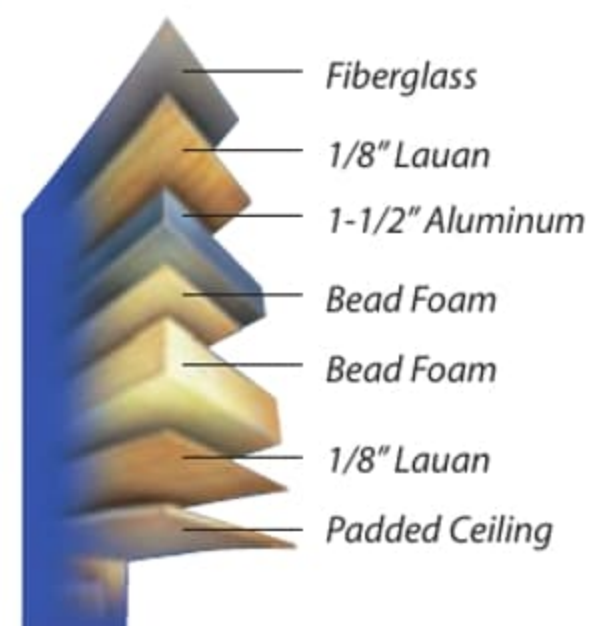
**VIP FACTORY DELIVERY:** Our optional VIP delivery service gives you an ideal opportunity to learn everything about your new vehicle from the very people who proudly designed and built it.



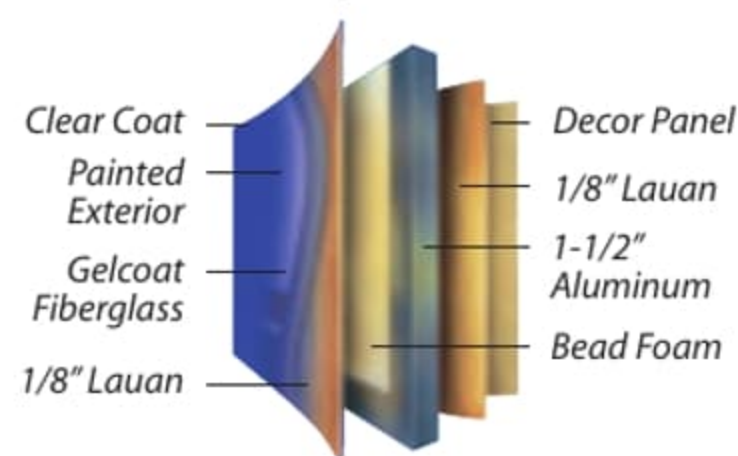
## LIKE NOTHING ELSE.

When American Coach set out to design the ultimate touring vehicle, we left nothing to chance. In order to create an RV that was truly superior to the competition, a rigorous testing process was created to ensure that the series functioned high above the curve, giving you the driving experience of a lifetime; and we succeeded. American Coach's patented Vacu-bond® process takes the numerous components of the sidewalls, flooring and roof, and seals them in a vacuum to produce a single, solid structure with unmatched strength and integrity. If that wasn't enough, we then used aluminum framing to further strengthen the vehicle's structure and create a large carrying capacity. The lightweight aluminum design improves overall strength while helping to maintain a smooth and seamless ride. We only settle for the best, and with American Coach, we've given it to you.

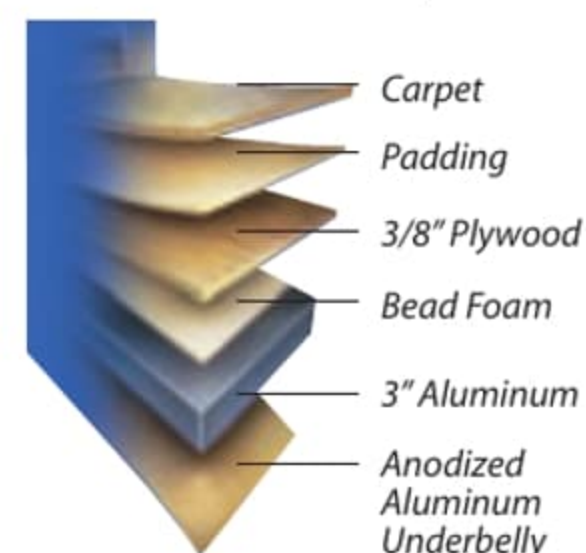
### Ceiling Construction with Fiberglass Roof



### Sidewall Construction with Exterior Fiberglass



### Floor Construction with Enclosed Underbelly



## OUR PROMISE.

In one word, quality. The American Coach team is passionate about understanding each of our proud owners. Customer's wants, needs and suggestions are carefully scrutinized until the product meets or exceeds their standards. Always improving, constantly evolving and never satisfied, that is American Coach.

**SERVICE:** Our team of experts travel to countless rallies across the nation to provide world class service. Through this process, they get to know customers first hand, and in turn, deliver the highest level of service and satisfaction.

**PLANT TOURS:** Our doors are always open to those who call American Coach home. We welcome you to call 800-648-6582 for more information, or to set up a time to come visit us.

**VIP FACTORY DELIVERY:** Our optional VIP delivery service gives you an ideal opportunity to learn everything about your new vehicle from the very people who proudly designed and built it.



## What Drives You?

Maybe it's feeling like you're the only one on Earth. Perhaps it's the unique sense of closeness with the great outdoors. Or, it might be the joy that comes from spending quality time with family and friends. Whatever the reason, we know that you have a strong drive to experience everything that comes with spending time on the road. And for more than 50 years, we've shared that passion with you. Because we're RV enthusiasts ourselves, you can see our passion in the vehicles we design and build. Own a Fleetwood, and you'll feel like you're not just traveling, but embarking on an experience unlike any other. Set your own course for adventure and get out there and explore the world around you. Once you do, you'll see what it is that drives us — it's you.



**RV OWNERCARE\*** is a limited one-year/15,000-mile coach warranty and three-year/50,000-mile structural warranty, whichever occurs first, and it is fully transferable for the first 12 months. RV OWNERCARE is one of the RV industry's most comprehensive programs and includes systems, appliances, components and construction, with no deductible and no service charge. RV OWNERCARE coverage is provided from a company that will be around in the future to service your needs. See your nearest American Coach dealer for a full explanation of benefits and restrictions.

**FLEETWOOD TRAVELCADE CLUB** As a Fleetwood owner, you're eligible to become a member of our owners' group, Fleetwood Travelcade Club. It's a perfect way to meet other Fleetwood owners who love to travel across America and share in the RV lifestyle. Call (877) 577-2560 or visit [www.fleetwood.com/clubs](http://www.fleetwood.com/clubs) to learn more and join the fun! American Coach owners can join two great clubs. For more information visit American Coach Association at [www.americancoachassoc.com](http://www.americancoachassoc.com) or American Coach Chapter of FMCA [www.americancoach-fmca.com](http://www.americancoach-fmca.com).

**FLEETWOODRV.COM** To locate a dealer near you, visit our website or call 1-800-444-4905. We can also be contacted at Fleetwood Customer Relations, P.O. Box 7638, Riverside, CA 92513-7638.

**IMPORTANT—PLEASE READ** Product information, photography and illustrations included in this publication were as accurate as possible at the time of printing. For further product information and changes, please visit our website at [www.fleetwoodrv.com](http://www.fleetwoodrv.com) or contact your local Fleetwood dealer. Prices, materials, design and specifications are subject to change without notice. All weights, fuel, liquid capacities and dimensions are approximate. Fleetwood has designed its recreational vehicles to provide a variety of uses for customers. Each vehicle features optimal seating, sleeping, storage and fluid capacities. The user is responsible for selecting the proper combination of loads (i.e.: occupants, equipment, fluids, cargo, etc.) to ensure that the vehicle's capacities are not exceeded.

Your local American Coach dealer is:



[www.fleetwoodrv.com](http://www.fleetwoodrv.com)

\*For complete info see your American Coach dealer. ©2005, Fleetwood Enterprises, Inc. Printed in the USA. Inventory control number AC06B1 9/05.





## What Drives You?

Maybe it's feeling like you're the only one on Earth. Perhaps it's the unique sense of closeness with the great outdoors. Or, it might be the joy that comes from spending quality time with family and friends. Whatever the reason, we know that you have a strong drive to experience everything that comes with spending time on the road. And for more than 50 years, we've shared that passion with you. Because we're RV enthusiasts ourselves, you can see our passion in the vehicles we design and build. Own a Fleetwood, and you'll feel like you're not just traveling, but embarking on an experience unlike any other. Set your own course for adventure and get out there and explore the world around you. Once you do, you'll see what it is that drives us — it's you.



**RV OWNERCARE\*** is a limited one-year/15,000-mile coach warranty and three-year/50,000-mile structural warranty, whichever occurs first, and it is fully transferable for the first 12 months. RV OWNERCARE is one of the RV industry's most comprehensive programs and includes systems, appliances, components and construction, with no deductible and no service charge. RV OWNERCARE coverage is provided from a company that will be around in the future to service your needs. See your nearest American Coach dealer for a full explanation of benefits and restrictions.

**FLEETWOOD TRAVELCADE CLUB** As a Fleetwood owner, you're eligible to become a member of our owners' group, Fleetwood Travelcade Club. It's a perfect way to meet other Fleetwood owners who love to travel across America and share in the RV lifestyle. Call (877) 577-2560 or visit [www.fleetwood.com/clubs](http://www.fleetwood.com/clubs) to learn more and join the fun! American Coach owners can join two great clubs. For more information visit American Coach Association at [www.americancoachassoc.com](http://www.americancoachassoc.com) or American Coach Chapter of FMCA [www.americancoach-fmca.com](http://www.americancoach-fmca.com).

**FLEETWOODRV.COM** To locate a dealer near you, visit our website or call 1-800-444-4905. We can also be contacted at Fleetwood Customer Relations, P.O. Box 7638, Riverside, CA 92513-7638.

**IMPORTANT—PLEASE READ** Product information, photography and illustrations included in this publication were as accurate as possible at the time of printing. For further product information and changes, please visit our website at [www.fleetwoodrv.com](http://www.fleetwoodrv.com) or contact your local Fleetwood dealer. Prices, materials, design and specifications are subject to change without notice. All weights, fuel, liquid capacities and dimensions are approximate. Fleetwood has designed its recreational vehicles to provide a variety of uses for customers. Each vehicle features optimal seating, sleeping, storage and fluid capacities. The user is responsible for selecting the proper combination of loads (i.e.: occupants, equipment, fluids, cargo, etc.) to ensure that the vehicle's capacities are not exceeded.

Your local American Coach dealer is:



[www.fleetwoodrv.com](http://www.fleetwoodrv.com)

\*For complete info see your American Coach dealer. ©2005. Fleetwood Enterprises, Inc.  
Printed in the USA. Inventory control number AC06B1 9/05.

