

# Next Level

BY HOLIDAY RAMBLER

2006 | LIVE IT UP.



NEXT LEVEL | FIFTH WHEEL & SL TRAVEL TRAILER



HOLIDAY RAMBLER®

*This is Living.*



## DESIGNED TO MAKE YOUR HEART BEAT FASTER.

Meet the perfect toy hauler for your adrenaline-filled lifestyle — the Next Level fifth wheel by Holiday Rambler. It features a wide, 102" body and the rugged reliability of our exclusive Alumaframe® superstructure. For easy loading of all your cargo, it has a 2,500 lb. rated ramp door that's 95-1/4" wide. Inside, you'll enjoy a casual, livable decor with unbeatable versatility. Highlights include an overhead storage attic above the kitchen and additional storage over the cabinets — both with cargo netting. The roll-over dinette easily converts into additional sleeping space, and you have the option of a 27" or 20" TV, depending on the floorplan.

Island Mulberry Decor with New Vintage Oak Wood | 37CK ▶

NEXT LEVEL FIFTH WHEEL



A



B

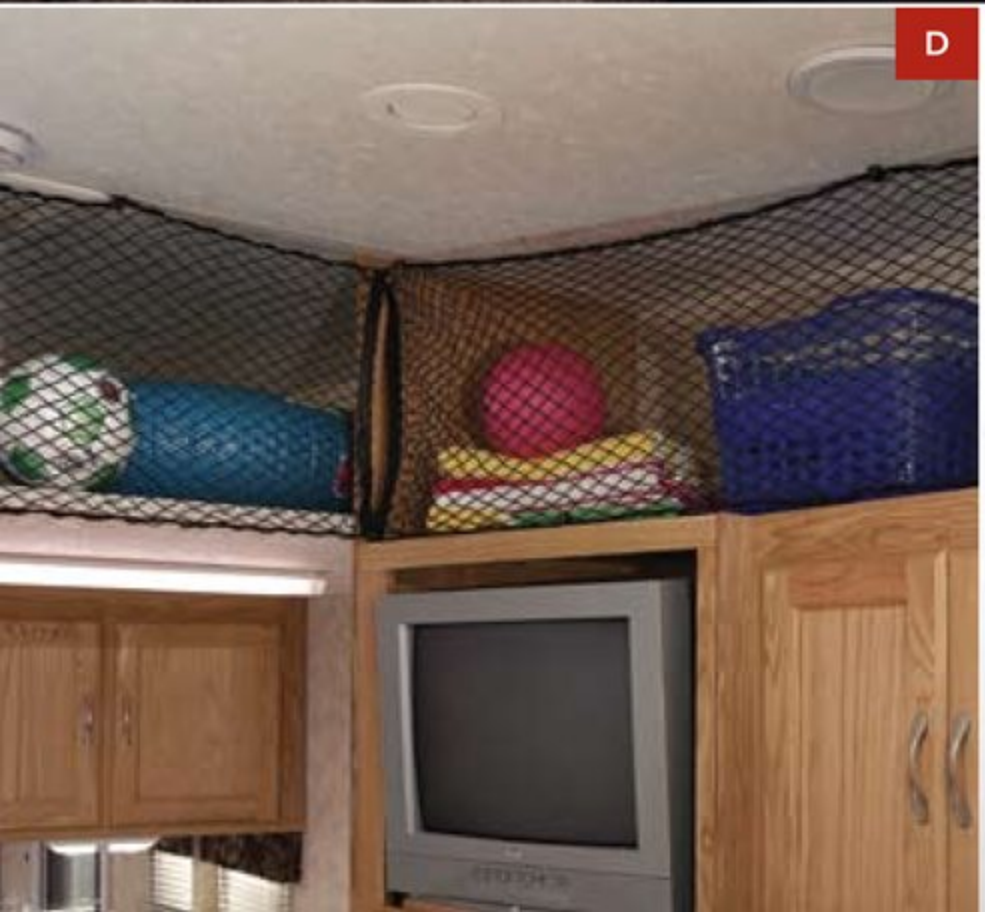


C





NEXT LEVEL FIFTH WHEEL



D

- A) The bedroom is shown here with an optional slide-out which adds valuable floor space. A large wardrobe closet and a chest of drawers provide plenty of storage space, and the queen bed features a hardwood headboard with decorative insert panels and a stylish bedspread.
- B) The bathroom is shown here with the optional glass shower enclosure. You'll find roomy storage in the medicine cabinet and vanity, and the sleek, contemporary styling features a stainless steel sink with a brushed nickel faucet and a diamond plate backsplash.
- C) For maximum sleeping room, you may choose the optional Electro-Majic™ king-size bunk beds and two 24" flush-mount clothes hangers (Not available with the cargo divider wall on the 34CK and 37CK).
- D) Cargo netting securely holds items that are stowed in the storage spaces above the overhead cabinets.



## BECAUSE EVERY ADVENTURE HAS ITS DOMESTIC SIDE.

The living's easy in the Next Level fifth wheel's well-appointed galley. You'll find versatile, space-saving appliances, and every nook and cranny is used to maximize storage. The cutting-edge styling features a laminate countertop with a Corian® accent edge and a diamond plate backsplash. And the large stainless steel sink has a brushed nickel single-handle faucet with a handy pullout sprayer.

NEXT LEVEL FIFTH WHEEL



- A) On the 37CK and 38CKS, you'll enjoy the additional storage of this roll-out pantry cabinet with three baskets.
- B) You'll find plenty of basement storage for luggage and other gear. Also shown here is the optional built-in vacuum which comes with deluxe tools.







## ALUMAFRAME® CONSTRUCTION SINCE 1966:

The Next Level fifth wheel features Holiday Rambler's exclusive Alumaframe® superstructure. Our revolutionary system of aluminum H and C-Channel crossmembers runs the entire length of the unit, with double-welded intersections for added strength. This rigid design is both lighter and sturdier than wood or tubular aluminum frames — and much more reliable than butt-welded or screwed joint designs. From dirt roads to potholes, you can count on Alumaframe® to handle the relentless stresses of the road and provide superior structural integrity for many years to come.



Alumaframe®



Wood

Aluminum  
(Butt-Welded)

Alumaframe®  
(C-Channel)



### 9-LAYER ROOF: (top to bottom)

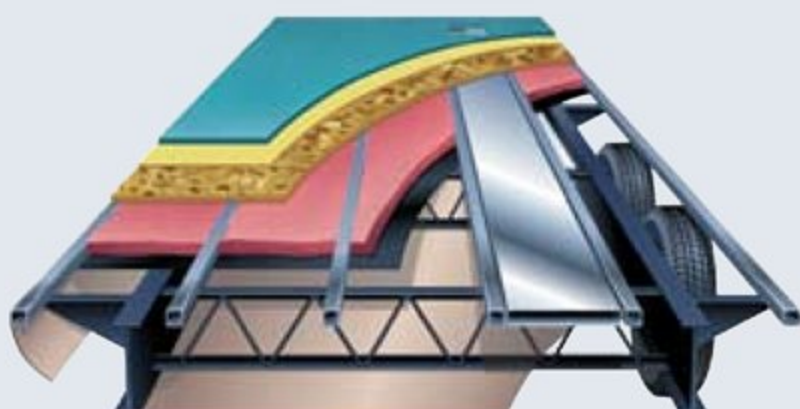
- Peaked one-piece roof with BriteTek™ roof material
- Luaun backer
- Thick, tapered bead foam insulation
- Aluminum double I-beam superstructure filled with fiberglass insulation
- Vapor barrier
- Structure foam: thermal insulative barrier
- Vapor barrier
- Luaun backer
- Vinyl ceiling



**IT'S 101° OUTSIDE.  
DON'T LOSE YOUR COOL INSIDE.**

How do you keep cool inside your RV when it's hot outside? Holiday Rambler has the answer, with our exclusive, multi-layer insulation concept. Just ask Charlie. It's his job to see how we stack up with the competition. He tested Holiday Rambler's nine-layer roof and six-layer wall construction against other RVs in a thermal chamber. The result: the temperature in the competing test unit rose approximately 30 percent more per hour on average than in the Holiday Rambler test unit.\*

\* Test performed by an independent testing facility, February 1999. Based on measurements taken every 15 minutes. For full details, visit your local dealer.



### 6-LAYER FLOOR: "WORKS IN THE BASEMENT"

Your fifth wheel features a six-layer floor and fully enclosed, insulated underbelly. The smooth underbelly contains large freshwater and wastewater tanks, dump valves, wiring harness and heating ducts, which help keep the fluid tanks from freezing and improve the overall insulation factor of your Next Level. The smoothness of the underbelly provides an unrestricted air flow that results in easier towing and improved gas mileage. And the outer shell of the undercarriage is made of rugged composite material that withstands damage from road debris. In addition, the frame is coated with a rust-inhibiting paint.



### 6-LAYER EXTERIOR WALL: (left to right)

- Smooth .040 aluminum is standard; high-gloss gel coat fiberglass is optional
- Interlocking C-Channel filled with 1-1/2" fiberglass insulation bonded in place so it doesn't sag or leave spaces uninsulated
- Vapor barrier
- Bead foam adds comfort, saves energy and provides a thermal insulative barrier
- Vapor barrier
- Interior paneling



BODY AND FRAME CONSTRUCTION: FEATURES		OPTIONS
<ul style="list-style-type: none"><li>• 102" Wide Body</li><li>• Alumaframe® Superstructure</li><li>• I-Beam Frame</li><li>• Smooth .040 Aluminum Exterior Walls</li><li>• Fiberglass Front Cap</li><li>• 3/8" Foam Core, Thermal Barrier Laminated Sidewall Structure</li><li>• Prep for Spare Tire</li><li>• Color-Coordinated Radius Wraps</li><li>• 1-1/2" Steel Framed Sub-Floor</li><li>• Laminated OSB Flooring</li><li>• 9 Flush-Mounted Tie-Downs (2,500 Lb. Capacity)</li><li>• Polished Anodized Diamond Plate Cargo Wall Protector</li><li>• Aluminum Roof Structure with Double I-Beam Roof Rafter 16" on Center</li><li>• BriteTek™ Exterior Roof Material</li><li>• Front Roof Rack and Ladder</li></ul>	<ul style="list-style-type: none"><li>• Frame-Mounted Entry Step</li><li>• Stabilizer Jacks (One Pair in Rear)</li><li>• Power Landing Jacks</li><li>• Shock Absorbers</li><li>• 5,200 Lb. Nev-R-Lube Triple Axles with Electric Brakes</li><li>• 15" Radial Tires</li><li>• Stylized 15" Chrome Wheels with Chrome Center Hub (Six Wheels)</li><li>• Molded ABS Fender Skirts</li><li>• Enclosed Underbelly</li><li>• Beaver Tail Floor</li><li>• 2,500 Lb. Rated Ramp Door</li><li>• 95-1/4" Wide Rear Ramp Door</li><li>• Non-Skid Ramp Door Flooring</li><li>• Cam Lock Rear Door Locking System</li><li>• Wrap Storage Doors (Six)</li></ul>	<ul style="list-style-type: none"><li>• Recessed Spare Tire with Sport Wheel</li><li>• Flip-Over Transition Ramp</li><li>• Trailair® Center Point Suspension</li><li>• Smooth Gel Coat Fiberglass Sidewalls</li><li>• Wheel Chocks</li><li>• Electric Winch with Tether Remote</li></ul>
APPLIANCES: FEATURES	OPTIONS	
<ul style="list-style-type: none"><li>• 8 Cu. Ft. 2-Way Refrigerator</li><li>• High-Output 3-Burner Range with Oven</li><li>• Microwave with Touch Control</li><li>• Systems Monitor Panel on Range Hood with Exhaust Fan</li><li>• Telephone Jacks in Kitchen and Bedroom Area</li></ul>	<ul style="list-style-type: none"><li>• 10 Cu. Ft. 2-Way Refrigerator</li><li>• Three-Burner Cooktop without Oven</li><li>• Convection Microwave</li><li>• Roll-Out Pantry with Cabinet with 3 Baskets (37CK, 38CKS)</li><li>• Outside Cooking Grill with Quick Disconnect</li><li>• 27" Color TV with Remote in Living Room Area — TV Swivel Base Required (38FKS)</li><li>• 20" Color TV with Remote Control in Living Room Area — TV Swivel Base Required (N/A: 38FKS)</li><li>• 13" Color TV with Remote Control in Bedroom</li><li>• TV Swivel Base — Required Option for 27" and 20" TV Option</li></ul>	<ul style="list-style-type: none"><li>• Satellite Radio</li><li>• Four 2-Way Portable Rechargeable Radios</li><li>• Pop-Up Hamper/Trash Can</li><li>• Electro-Majic™ Bed — King Size with Two 24" Flush-Mount Clothes Hangers (34CK and 37CK: N/A with Cargo Divider Wall)</li><li>• Electro-Majic™ Bunk Bed — King Size with Two 24" Flush-Mount Clothes Hangers (34CK and 37CK: N/A with Cargo Divider Wall)</li><li>• Air Compressor</li><li>• Built-In Vacuum with Deluxe Tools</li><li>• Built-In Safe</li></ul>
INTERIOR: FEATURES	OPTIONS	
<ul style="list-style-type: none"><li>• New Vintage Oak Cabinets</li><li>• Oak Flat Panel Cabinet Doors</li><li>• Brushed Nickel Cabinet Hardware</li><li>• Diamond Plate Slide-Out Room Fascia Insert with Trim Piece and Rosette (Bedroom Slide-Out Only)</li><li>• Decorative Slide-Out Room Fascia with Trim and Rosette (38CKS, 38FKS)</li><li>• Laminate Kitchen Countertop with Corian® Accent Edge in Galley and Lavatory</li><li>• Diamond Plate Galley and Lavatory Backsplash (N/A: 38FKS — Galley)</li><li>• Residential-Style Galley Backsplash (Behind Sink Only) (38FKS)</li><li>• Decorative Mirror with Painted Logo behind Kitchen Sink (N/A: 38CKS)</li><li>• Built-In Kitchen Trash Can</li><li>• Silverware Tray</li></ul>	<ul style="list-style-type: none"><li>• Vintage Oak 6-Panel Interior Doors</li><li>• TV Cabinet in Bedroom</li><li>• Towel Rack in Stool Room</li><li>• Carpeting and Pad in Bedroom</li><li>• Utility Center by Entrance Door (Slide-Out Switches, Gauges and Exterior Light Switches)</li><li>• Linoleum in Kitchen, Bath and Entry</li><li>• Overhead Cabinets with Additional Storage and Cargo Netting above Sofa (N/A: 38CKS, 38FKS)</li><li>• Overhead Storage Attic above Kitchen (N/A: 38CKS, 38FKS)</li><li>• Magazine Rack in Stool Room</li></ul>	<ul style="list-style-type: none"><li>• Decors: Weekend Attitude, Island Mulberry</li><li>• Kitchen Countertop Extension (N/A: 38CKS)</li><li>• Cargo Divider Wall (N/A: 38CKS)</li><li>• Surged Carpet for Cargo Area (N/A with Divider Wall)</li><li>• Cargo Privacy Screen</li><li>• Utility Center — Folding Table with Shelves (Available with Divider Wall Option)</li></ul>



FURNITURE: FEATURES		OPTIONS
<ul style="list-style-type: none"><li>• Side Queen Bed with Front Wardrobe</li><li>• Chest of Drawers with TV Shelf</li><li>• Polyethylene Indoor/Outdoor Table</li><li>* • One Roll-Over Sofa with Embroidered Logo — Roadside (N/A: 38FKS)</li><li>* • One Jackknife Sofa — Roadside (38FKS)</li><li>* • One Booth Dinette — Roadside (38FKS)</li><li>• Hide-A-Bed Sofa (38FKS)</li></ul>		<ul style="list-style-type: none"><li>• Queen Bed Slide-Out with Chest of Drawers and Overhead TV Cabinet</li><li>* • Roll-Over Sofa with Embroidered Logo in Place of Dinette (N/A: 38FKS)</li><li>* • Second Roll-Over Sofa with Embroidered Logo — Roadside (38CK, 38CKS)</li><li>* • Roll-Over Sofa in Cargo Area with Embroidered Logo — Roadside (38FKS)</li><li>• One Barrel Chair (38FKS)</li><li>• Two Barrel Chairs in Place of Dinette (N/A: 38FKS)</li><li>• Two Additional Barrel Chairs (38CK, 38CKS)</li><li>• Second Indoor/Outdoor Table</li></ul>
* Embroidered Logo N/A with Residential Decor		
ELECTRICAL SYSTEMS AND LIGHTS: FEATURES		OPTIONS
<ul style="list-style-type: none"><li>• Digital 12V Linear Series AM/FM with CD/DVD Player Stereo with 6 Upgrade Speakers, 40 Watt Amp and Subwoofer</li><li>• Two Weatherproof Exterior Speakers</li><li>• Fluorescent Light in Kitchen</li><li>• 50 Amp Electric Service (Required with Second A/C)</li><li>• Electrical Management System (50 Amp/12V with 55 Amp Converter)</li><li>• Six Docking Lights — 12V (2 Side and 2 Rear Recessed, 2 End of Cargo Overhead Cabinets)</li></ul>	<ul style="list-style-type: none"><li>• LED Taillights</li><li>• Disconnect and Battery Box</li><li>• Trunk Light</li><li>• Bathroom Bar Light</li><li>• Cable TV/DSS/VCR Ready with Video Box</li><li>• Wineguard® TV Antenna with Cable Box</li><li>• Emergency Pump Station Shut-Off Switch (with Optional Pump Station)</li><li>• Dual Exterior Cable/Satellite Reception</li><li>• Solar Prep</li></ul>	<ul style="list-style-type: none"><li>• One 12V Deep Cycle Battery with Disconnect</li><li>• Two 12V Deep Cycle Batteries with Disconnect</li><li>• Fluorescent Lighting in Living Area and Kitchen</li><li>• Generator Prep 5.5 kW 20 Gal. Fuel Tank, Remote Switch with Hour Meter, Fuel Gauge</li><li>• 5.5 kW Marquis Gold Gas Onan® Generator with 20 Gal. Tank (Prep Required)</li><li>• Pump Station with 40 Gal. Tank, Timer Switch and Fuel Gauges in Utility Center</li></ul>
PLUMBING AND LP SYSTEMS: FEATURES		OPTIONS
<ul style="list-style-type: none"><li>• Large Stainless Steel Kitchen Sink with Brushed Nickel Single-Handle Pullout Faucet</li><li>• Demand Water System with Water Pump</li><li>• 10 Gal. LP Gas/Electric Water Heater with Electronic Ignition (DSI)</li><li>• Stainless Steel Bathroom Sink with Brushed Nickel Faucet</li><li>• Brushed Nickel Shower Fixtures</li><li>• Brushed Nickel Shower Hose and Head</li><li>• Medicine Cabinet with Mirror</li><li>• ABS Tub/Shower with Curtain (34CK, 38CK)</li></ul>	<ul style="list-style-type: none"><li>• ABS Shower with One-Piece Surround and Curtain (N/A: 34CK, 38CK)</li><li>• Water Management System with Bottom Drain (Includes Outside Shower)</li><li>• Water Heater Bypass Kit</li><li>• Thetford High-Profile Toilet</li><li>• No-Fuss Flush Holding Tank Rinsing System</li><li>• Two 30 Lb. LP Tanks with Automatic Changeover and Cover</li><li>• Water Heater Switch inside Unit</li><li>• Spray-Away Sprayer with Hose</li><li>• Sewer Hose Storage with Hatch and Tube</li></ul>	<ul style="list-style-type: none"><li>• Shower with Sliding Glass Door (34CK, 38CK)</li><li>• ABS Shower with One-Piece Surround with Glass Door (N/A: 34CK, 38CK)</li></ul>
HEATING, VENTS AND AIR CONDITIONING: FEATURES		OPTIONS
<ul style="list-style-type: none"><li>• One Carrier 13,500 BTU Rooftop Air Conditioner with Remote Control</li><li>• 40,000 BTU Hydroflame Electronic Ignition Furnace</li><li>• Ducted Heating System</li></ul>	<ul style="list-style-type: none"><li>• Manual Roof Vent</li><li>• 12V Roof Vent in Bathroom</li><li>• Wire Prep and Ducting for Second Air Conditioner with Optional 50 Amp Service</li></ul>	<ul style="list-style-type: none"><li>• 12V Roof Vent in Cargo/Rear Roof Locations</li><li>• One Carrier 15,000 BTU High-Capacity Rooftop Air Conditioner Instead of 13,500 BTU with Remote Control</li><li>• Second Carrier 13,500 BTU Rooftop Air Conditioner with Remote in Cargo Area (Requires 50 Amp Service Option)</li><li>• Attic Fan with Thermostat and Rain Sensor with 2-Way Switch — Except Rear Cargo/Bathroom, 1-Direction</li></ul>



WINDOWS, DOORS AND AWNINGS: FEATURES	OPTIONS
<ul style="list-style-type: none"> <li>Mirrored Radius Windows</li> <li>Tinted Skylight in Bathroom</li> <li>Radius Main Entrance Door with Anti-Skid Steps</li> <li>Window in Stool Room</li> </ul>	<ul style="list-style-type: none"> <li>Brushed Nickel Mini Blinds</li> <li>Padded Valances and Lambrequins Throughout</li> <li>Rear Entry Door</li> <li>Checkered Flag Textured Fabric Awning</li> <li>Slide-Out Awning ODS (38CKS, 38FKS)</li> <li>Bedroom Slide-Out Cover</li> <li>Rear Door Awning</li> <li>Swing-Out Entry Door Handle</li> </ul>

SAFETY: FEATURES
<ul style="list-style-type: none"> <li>Fire Extinguisher — 10 Lb.</li> <li>Deadbolt Lock(s) on Entrance Door(s)</li> <li>120V GFI Protected Outlets (Kitchen, Bath, Exterior)</li> <li>Breakaway Switch</li> <li>LP Gas Detector</li> <li>Smoke Detector</li> <li>Egress Window(s)</li> <li>Safety Glass</li> </ul>

Due to the large variety of options and floorplan arrangements available to our customers, actual weights for each unit can differ significantly. Holiday Rambler provides a weight sticker on each unit we produce which includes that unit's tank capacities and approximate weight. Consult your local Holiday Rambler dealer for unit availability and further information.

The information printed in this brochure reflects product design, fabrication, and component parts at the date of printing. The manufacturer reserves the right, at any time, to make changes in product design or material or component specifications as its sole option, without notice. This includes the substitution of components of a different brand or trade name, which will result in comparable performance. All information printed in this brochure is subject to change after the date of printing. Some features shown or mentioned in this brochure are optional and may only be available in selected floorplans. Photographs may show props or decorations that are not standard equipment on Holiday Rambler models. Holiday Rambler, the HR logo and its design, are registered trademarks. All other products and company names are trademarks and/or registered trademarks of their respective holders.

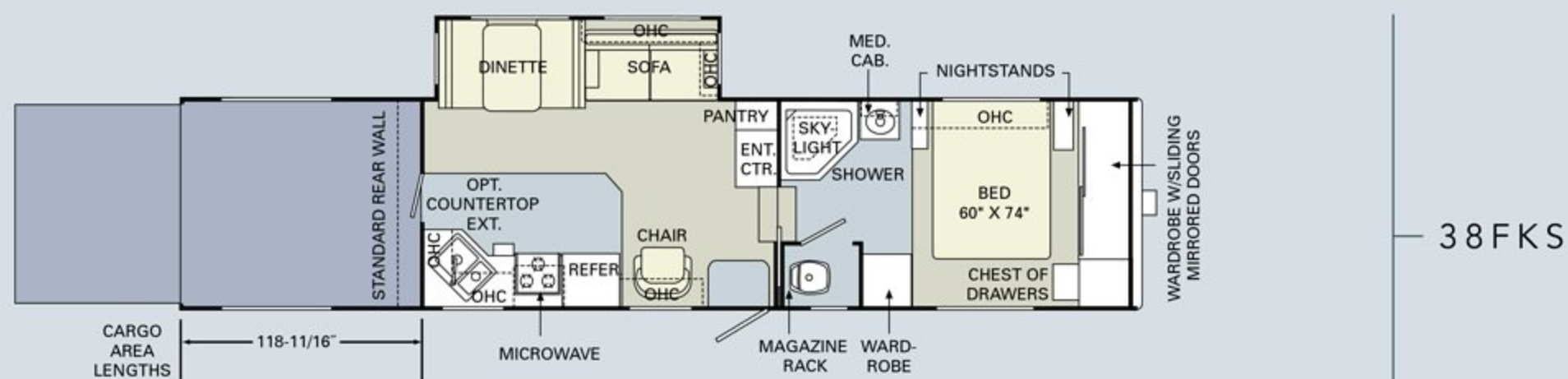
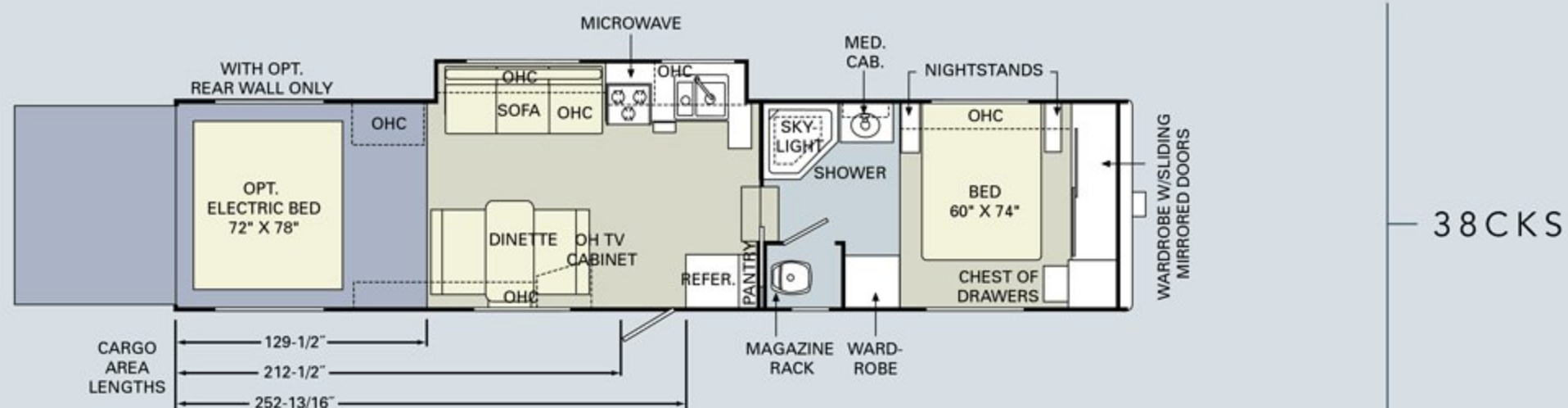
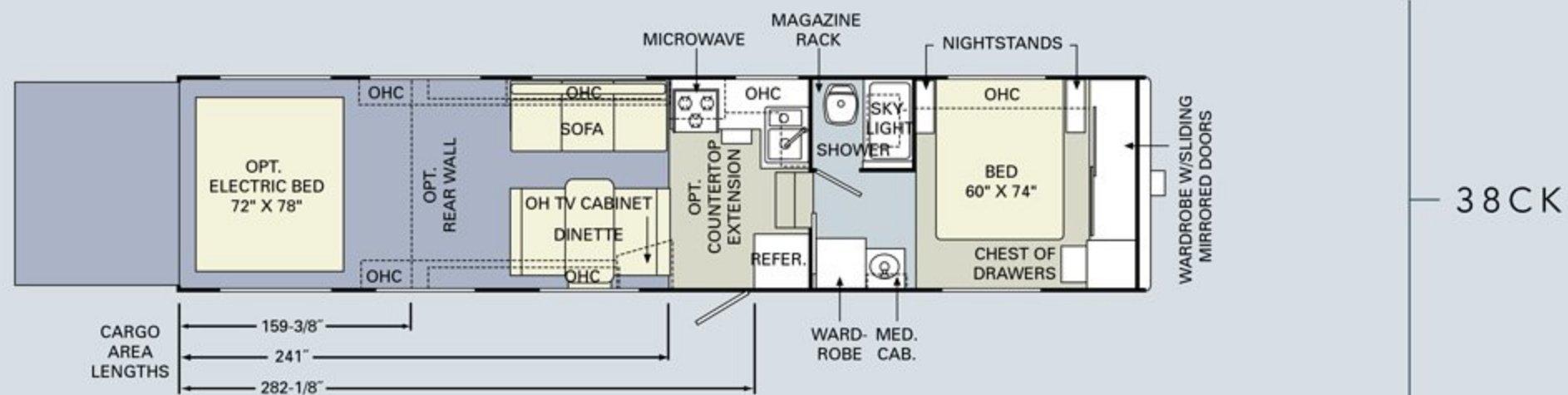
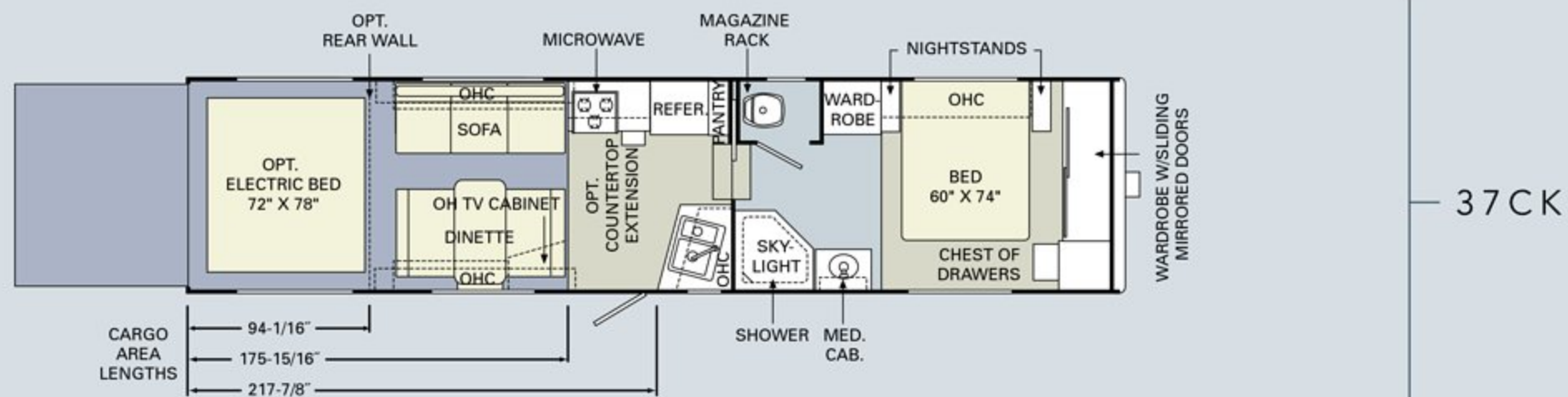
While the color of the towable's exterior and the interior fabrics depicted in this sales brochure are fair and reasonable depictions, the colors depicted may not be an exact match of the actual colors because of the variances in photo-processing and variances caused by inserting the photographs within the sales brochure. Due to product improvements, changes during the model year and/or transcription errors that may occur, information represented within this brochure may not be accurate at the time of your purchase. If certain information is significant to your purchasing decision, please confirm the information with your dealer prior to submitting your order.

The actual overall length of the recreational vehicle may differ from that indicated in the brochure due to variances in the manufacturing process and/or installed components. The actual length may be greater or less than that indicated.

Component part and appliance manufacturers issue limited warranties covering those portions of the recreational vehicle not covered by the Limited Warranties issued by Monaco Coach Corporation. To learn which specific component parts and appliances are excluded from the Limited Warranties issued by Monaco Coach Corporation, please contact your selling dealership or Monaco Coach Corporation directly, or review the warranty packet inside the recreational vehicle.

Weights*	34CK	37CK	38CK	38CKS	38FKS
Gross Vehicle Weight Rating (Lbs.)	16,950	16,950	16,950	16,950	16,950
Hitch Weight (Lbs.)	TBD	3,100	3,040	2,910	2,950
Hitch Height	51"	51"	51"	51"	51"
Axle(s) Weight (Lbs.)	5,200 (3)	5,200 (3)	5,200 (3)	5,200 (3)	5,200 (3)
Unloaded Vehicle Weight (Lbs.)	TBD	10,910	11,190	12,280	12,020
Net Carrying Capacity (NCC) (Lbs.)	TBD	6,040	5,760	4,670	4,930
Tire Size	15"	15"	15"	15"	15"
Tire Load Range	D	D	D	D	D
Measurements					
Overall Length	35' 6"	36' 8"	39' 10"	39' 10"	39' 10"
Overall Height (Including A/C)	TBD	12' 8"	12' 8"	12' 7"	12' 7"
Exterior Width	102"	102"	102"	102"	102"
Awning Length	14'	19'	18'	17'	17'
Tank Capacity**					
Water Heater (Gal.)	10	10	10	10	10
Gray Tank (Gal.)	50	50	50	50	50
Black Tank (Gal.)	50	50	50	50	50
Fresh Tank (2 - 65 Gal.)	130	130	130	130	130
LP Tank (Gal.)***	30 (2)	30 (2)	30 (2)	30 (2)	30 (2)
<p>* Weights may vary by options.</p> <p>** Variances in the fabrication and installation of the tanks may cause the actual "usable capacity" to be greater or less than the capacities designated above.</p> <p>*** Actual filled LP capacity is 80% of listing due to safety shut-off required on tank.</p>					





■ CARPET | ■ LINOLEUM | ■ LAMINATED PVC FLOOR



## WHERE ALL THE DETAILS COME TOGETHER.

Holiday Rambler has long set the standard with contemporary interiors that are a perfect fit for your lifestyle. We've also led the way with superb cabinetry craftsmanship, including oak cabinet doors. Select the combination that suits you best to customize your Next Level and make it distinctively your own.



FIFTH WHEEL



SL TRAVEL TRAILER





### NEXT LEVEL HARDWARE

Our cabinet hardware design features a brushed nickel finish.



BETTER  
STAIN  
PROTECTION

Manufactured in, not added on. For added protection against stains, soil repellent is applied to virtually all upholstery fabric during the finishing process for superior coverage.\*

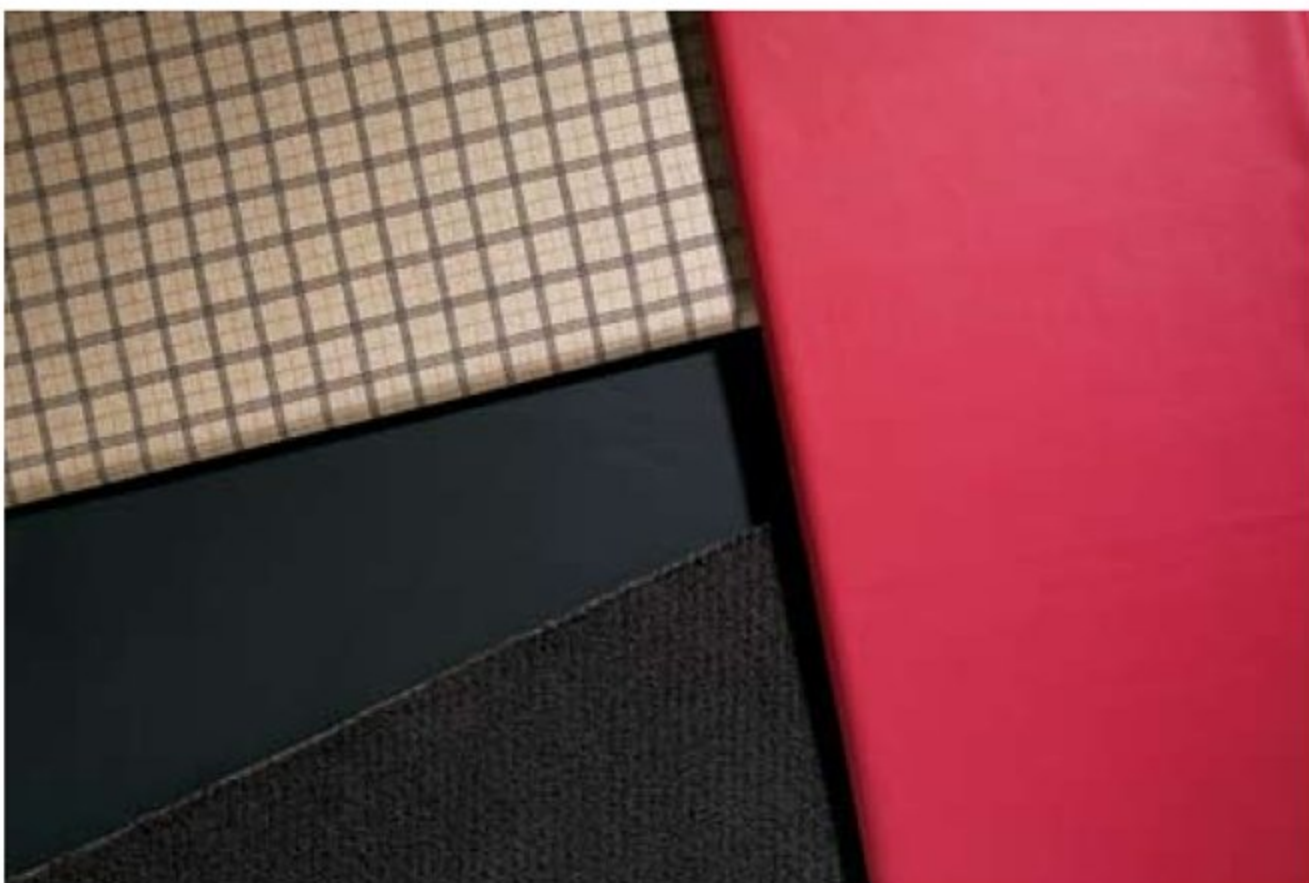
\*Brand and application of upholstery fabric protection may vary depending on date recreational vehicle was manufactured.



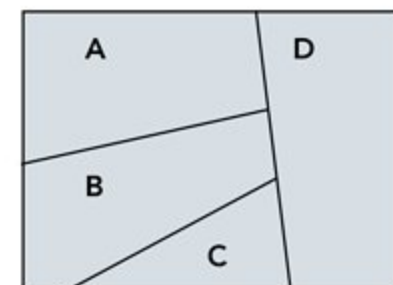
ISLAND MULBERRY



NEW VINTAGE OAK



WEEKEND ATTITUDE



- A. BEDSPREAD
- B. SOFA
- C. CARPET
- D. ACCENT



## FINALLY. A FULL-FEATURED TOY HAULER THAT'S EASY TO HAUL.

Introducing the Next Level SL travel trailer. This super-lightweight toy hauler is even easier to tow and makes no sacrifices when it comes to features. Its impressive ramp door is 95-1/4" wide and rated for 2,500 pounds — easily accommodating all your grown-up toys. Inside, you'll find plenty of cabinet space, as well as additional storage with cargo netting above the overhead cabinets. Optional highlights include a 19" TV, a satellite radio and a roll-over dinette that easily folds into a bed.

Island Mulberry Decor with New Vintage Oak Wood | 28CK ▶

NEXT LEVEL SL TRAVEL TRAILER







NEXT LEVEL SL TRAVEL TRAILER



A

B

**A)** A queen bed comes standard and has a headboard with a handy storage cabinet. More roomy storage space is found in the overhead cabinets, and they include a flip-up TV shelf. Throughout the travel trailer, you'll find attractive window treatments with padded valances and lambrequins, as well as brushed nickel mini blinds.

**B)** The bathroom is shown here with the residential-style optional shower featuring a sliding glass door and a towel bar. (A shower with a glass door is standard on the 31CK.) Also shown is the handy linen closet in the bathroom of the 28CK.



## AFTER YOUR EXTREME SPORTS, COME HOME TO EXTREME COMFORT.

The Next Level SL travel trailer offers everything you need to whip up a home-cooked meal and unwind from a day of thrill seeking. The appliances include a high-output three-burner range with an oven, as well as a microwave and an 8 cu. ft. refrigerator. Shown here is the optional countertop extension, giving you extra workspace, and behind the sink you'll enjoy the signature styling of our decorative mirror with the etched Next Level logo.

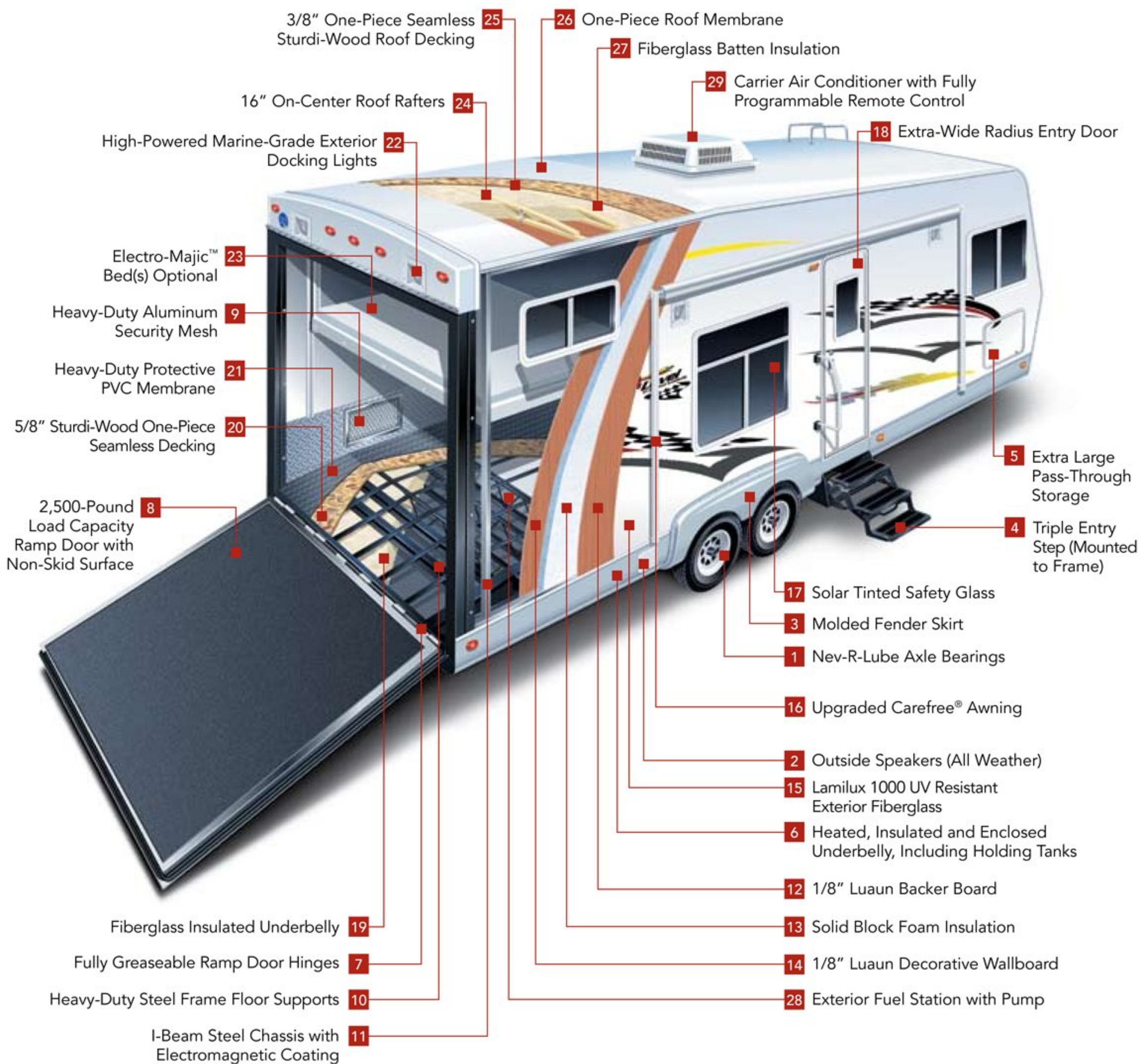
NEXT LEVEL SL TRAVEL TRAILER



A) On select floorplans, the sofas (and optional roll-over dinette) fold up against the wall to provide extended cargo room. Shown here are the Electro-Majic™ queen-size bunk beds in the "up" position. And you can also see here the versatility of the nine flush-mounted tie-downs, each with a 1,200-pound breaking strength capacity. Yes, you could say we've thought of everything.







#### NEXT LEVEL BENEFITS:

- |  |   |  |  |
|--|---|--|--|
| 1 Sealed bearings (no water or sand to wear out bearings).   | 9 Check out this security measure — no wimpy screens. Helps keep intruders out.     | 16 Best hardware (strong, dependable).                               | 24 Just like your home.  |
| 2 Weatherproof for all your listening enjoyment.   | 10 Exclusive to Holiday Rambler. Why settle for wood or aluminum?                   | 17 Keep your unit cool in the summer and warm in the winter.         | 25 Strong and no seams, solid one-piece roof.  |
| 3 One-piece, very durable for all your off-road needs.   | 11 No C-Channel here. Reduces rust and peeling like spray-painted or powder-coated. | 18 Extra wide and tall (no head knockers here).                      | 26 Low maintenance.  |
| 4 Mounted to a welded bracket for peace of mind and easy entry.                                    | 12 Helps provide a moisture barrier.  | 19 Look at the insulation here. Compare to others.                   | 27 Even more insulation to help keep you cool in the summer and warm in the winter.  |
| 5 Wow! Extra large for all your gear.  | 13 Continuous insulation with zero voids (won't settle like batten insulation).     | 20 Strong and no seams, solid one-piece floor.                       | 28 Hand-fabricated aluminum — no steel to rust out. (Check the competition).         |
| 6 Extended season capabilities — go when you want.   | 14 Great residential look and easy to clean.  | 21 Poly-coated floor covering to resist fuel spills, water and heat. | 29 Residential — remote controlled (change temperature from anywhere in your coach). |
| 7 No more greasy springs or cables to fray.  | 15 Take a look at the high-gloss finish.  | 22 Check out the power of these waterproof lights.                   |  |
| 8 Big-time strength. No paint to wear off. Provides a very tough surface that will last for years. |   | 23 So good, we have a patent on them.                                |  |



BODY AND FRAME CONSTRUCTION: FEATURES		OPTIONS
<ul style="list-style-type: none"> <li>• 2" Laminated Sidewall Construction with Welded Tubular Aluminum Studs</li> <li>• I-Beam Frame</li> <li>• Vinyl Exterior Graphics</li> <li>• Smooth White Fiberglass Exterior Walls</li> <li>• Pass-Through Storage under Master Bed</li> <li>• Prep for Spare Tire</li> <li>• Color-Coordinated Radius Wraps</li> <li>• 5/8" Sturdi-Wood Flooring</li> <li>• 3/8" Full Walk-On Roof</li> <li>• 5" Roof Trusses, 16" on Center</li> <li>• Seamless Exterior Roof Membrane</li> <li>• 9 Flush-Mounted Tie-Downs — 1,200 Lb. Breaking Strength Capacity</li> <li>• Polished Anodized Diamond Plate Cargo Wall Protector</li> </ul>	<ul style="list-style-type: none"> <li>• Front Ladder 2-5/16" Ball Coupler</li> <li>• 5,200 Lb. Nev-R-Lube Tandem Axles with Electric Brakes</li> <li>• 15" Radial Tires</li> <li>• Stylized 15" Sport Chrome Wheels (4) with Black Center Hub</li> <li>• Molded ABS Fender Skirts</li> <li>• Beaver Tail Floor</li> <li>• 2,500 Lb. Rated Ramp Door</li> <li>• 95-1/4" Wide Rear Ramp Door</li> <li>• Non-Skid Ramp Door Flooring</li> <li>• Cam Lock Rear Door Locking System</li> <li>• Stabilizer Jacks (2 Pair)</li> <li>• Frame-Mounted Entry Step</li> </ul>	<ul style="list-style-type: none"> <li>• Lighted Power Hitch Jack</li> <li>• Shock Absorbers</li> <li>• LP Bottle Cover</li> <li>• Spare Tire with Sport Wheel</li> <li>• Enclosed Underbelly</li> </ul>
APPLIANCES: FEATURES	OPTIONS	
<ul style="list-style-type: none"> <li>• 8 Cu. Ft. 2-Way Refrigerator</li> <li>• High-Output 3-Burner Range with Oven</li> <li>• Microwave with Touch Control</li> </ul>	<ul style="list-style-type: none"> <li>• 19" Color TV with Remote Control in Living Room Area</li> <li>• Outdoor Barbecue Grill with Quick Disconnect</li> </ul>	<ul style="list-style-type: none"> <li>• Air Compressor</li> </ul>
INTERIOR: FEATURES	OPTIONS	
<ul style="list-style-type: none"> <li>• New Vintage Oak Cabinets</li> <li>• Oak Flat Panel Cabinet Doors</li> <li>• Brushed Nickel Cabinet Hardware</li> <li>• Pantry with Shelves (28CK)</li> <li>• Drawers below Front Bed Base (N/A: 25CK, 31CK)</li> <li>• Large Wardrobe Closet with Curtain Rod</li> <li>• Laminate Countertop — Galley and Lavatory</li> <li>• Laminate Lavatory Countertop with Self-Edge</li> <li>• Diamond Plate Galley and Lavatory Backsplash</li> </ul>	<ul style="list-style-type: none"> <li>• Decorative Mirror with Painted Logo behind Kitchen Sink</li> <li>• Woodgrain Passage Door</li> <li>• Carpeting in Bedroom</li> <li>• Linoleum in Kitchen, Bath and Entry</li> <li>• Linen Closet with Shelves in Stool Room (28CK)</li> <li>• Curtain at Bedroom for Privacy</li> <li>• Overhead Cabinets with Additional Storage and Cargo Netting above Sofa</li> </ul>	<ul style="list-style-type: none"> <li>• Decors: Weekend Attitude, Island Mulberry</li> <li>• Kitchen Countertop Extension</li> <li>• Removable Carpet for Cargo Area with Seamed Edges</li> <li>• Cargo Privacy Screen</li> </ul>

## WE'VE GOT YOUR BACK.

- Live customer support 24/7/365
- 350 Nationwide Service Centers
- Free first-year enrollment in our Owner Advantage Roadside Assistance Program
- Call 1-800-634-0855 or 1-800-650-7337 to arrange a tour of one of our state-of-the-art production facilities in Indiana or Oregon.





FURNITURE: FEATURES		OPTIONS
<ul style="list-style-type: none"> <li>• 60" x 80" Queen Front Bed with Additional Storage at Headboard</li> <li>• Queen Size 60" x 80" Manual Strut Cargo Bed with Ladder</li> <li>• Bedroom Overhead Cabinets with Flip-Up TV Shelf</li> </ul>		<ul style="list-style-type: none"> <li>• Electro-Majic™ Bed — Queen Size with Two 24" Flush-Mount Clothes Hangers</li> <li>• Electro-Majic™ Bunk Bed — Queen Size with Two 24" Flush-Mount Clothes Hangers</li> <li>* • Roll-Over Dinette with Embroidered Logo and Polyethylene Indoor/Outdoor Table in Place of Sofa (Curbside)</li> <li>• Two Barrel Chairs in Place of Dinette (Curbside)</li> </ul>
* Embroidered Logo N/A with Residential Decor		
ELECTRICAL SYSTEMS AND LIGHTS: FEATURES		OPTIONS
<ul style="list-style-type: none"> <li>• Digital 12V Linear Series AM/FM with CD-DVD Player Stereo with 6 Upgrade Speakers, 40 Watt Amp and Subwoofer</li> <li>• Two Weatherproof Exterior Speakers</li> <li>• Wider Wall Switches</li> <li>• 12V Incandescent Lights with Clear Lens</li> <li>• Systems Monitor Panel — Battery Charge, Water Heater and Water Pump Switch</li> <li>• Electrical Management System (30 Amp/12V with 55 Amp Converter)</li> <li>• Porch Light and Side Docking Lights on Lighted Switches</li> </ul>		<ul style="list-style-type: none"> <li>• Six Docking Lights 12V: 2 Side and 2 Rear Recessed, 2 End of Cargo Overhead Cabinets</li> <li>• 120V Exterior Receptacle</li> <li>• LED Taillights</li> <li>• Trunk Light</li> <li>• Wineguard® TV Antenna with Amplified Outlet</li> <li>• Emergency Pump Station Shut-Off Switch (with Optional Pump Station)</li> <li>• Solar Wire Prep</li> <li>• Exterior Cable or Satellite Receptacle</li> </ul>
		<ul style="list-style-type: none"> <li>• One 12V Deep Cycle Battery with Disconnect and Box</li> <li>• 50 Amp Service (31CK) (Only Available with Second 13,500 BTU Air Conditioner)</li> <li>• Generator Prep 5.5 kW, 40 Gal. Fuel Tank, Remote Switch with Hour Meter, Fuel Gauge</li> <li>• 5.5 kW Marquis Gold Gas Onan® Generator with 40 Gal. Tank (Prep Required)</li> <li>• Pump Station with 40 Gal. Tank, Remote Starter Switch, Timer Switch and Fuel Gauges Conveniently Located</li> </ul>
PLUMBING AND LP SYSTEMS: FEATURES		OPTIONS
<ul style="list-style-type: none"> <li>• Large Stainless Steel Kitchen Sink with Brushed Nickel Single-Handle Pullout Faucet</li> <li>• Demand Water System with Water Pump 10 Gal. LP Gas/Electric Water Heater with Electronic Ignition (DSI)</li> <li>• Stainless Steel Bathroom Sink with Brushed Nickel Faucet</li> <li>• Medicine Cabinet with Mirror</li> <li>• ABS Tub/Shower with Accordion Door (N/A: 31CK)</li> </ul>		<ul style="list-style-type: none"> <li>• ABS Shower with Glass Door (31CK)</li> <li>• Outside Shower with Sprayer Head On/Off Control</li> <li>• Water Heater Bypass Kit</li> <li>• Thetford High-Profile Toilet</li> <li>• Two 30 Lb. LP Tanks with Automatic Changeover and Valve Cover</li> <li>• Water Heater Switch inside Unit</li> <li>• Spray-Away Sprayer with Hose</li> <li>• Sewer Hose Storage with Hatch and Tube</li> </ul>
		<ul style="list-style-type: none"> <li>• No-Fuss Flush</li> <li>• Shower with Sliding Glass Door and Towel Bar (N/A: 31CK)</li> </ul>
HEATING, VENTS AND AIR CONDITIONING: FEATURES		OPTIONS
<ul style="list-style-type: none"> <li>• One Carrier 15,000 BTU Rooftop Air Conditioner with Remote Control</li> <li>• 31,000 BTU Hydroflame Electronic Ignition Furnace</li> </ul>		<ul style="list-style-type: none"> <li>• Manual Roof Vent</li> <li>• 12V Roof Vent in Bathroom</li> </ul>
		<ul style="list-style-type: none"> <li>• 12V Roof Vent in Cargo/Rear Roof Locations</li> <li>• Attic Fan with Thermostat and Rain Sensor with One Direction Switch</li> <li>• Second Carrier 13,500 BTU Rooftop Air Conditioner with Remote in Cargo Area (31CKS) (Requires 50 Amp Service)</li> <li>• Attic Fan with Thermostat and Rain Sensor with 2-Way Switch</li> </ul>

## AT HOLIDAYRAMBLER.COM, WE'RE ALWAYS OPEN.

Visit our website anytime day or night to check out the latest product news and updates. You can also take a factory tour, find a dealer near you, get information on club events and much more. It's also an easy way to contact us via e-mail.

[www.holidayrambler.com](http://www.holidayrambler.com)

## WARRANTIES

**12 MONTH** basic limited warranty (Next Level SL travel trailer)

**5 YEAR** limited warranty on aluminum or steel frame structure of sidewall, roof, front and rear cap (Next Level fifth wheel)

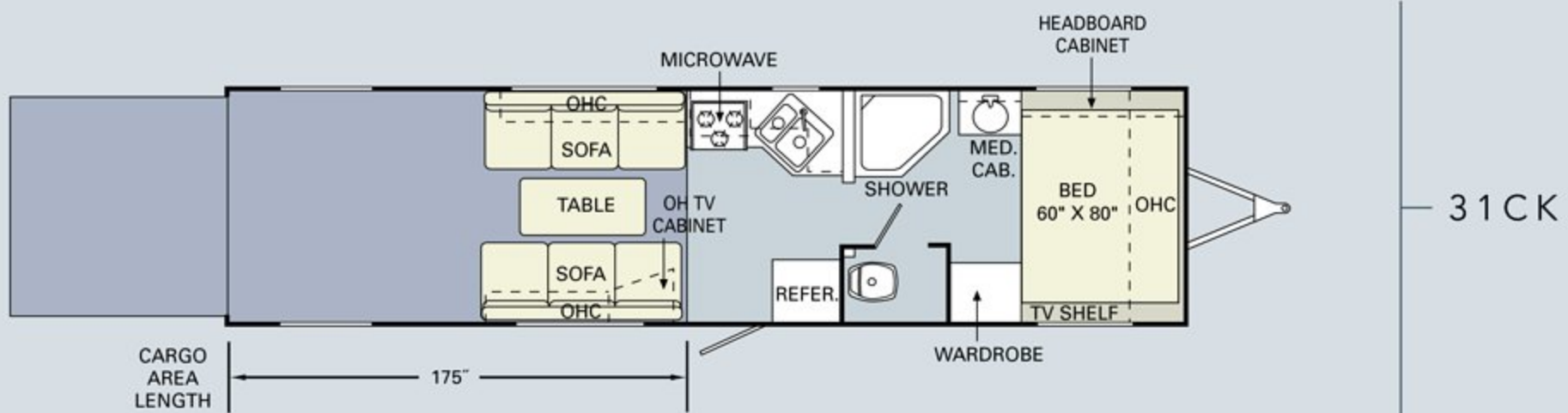
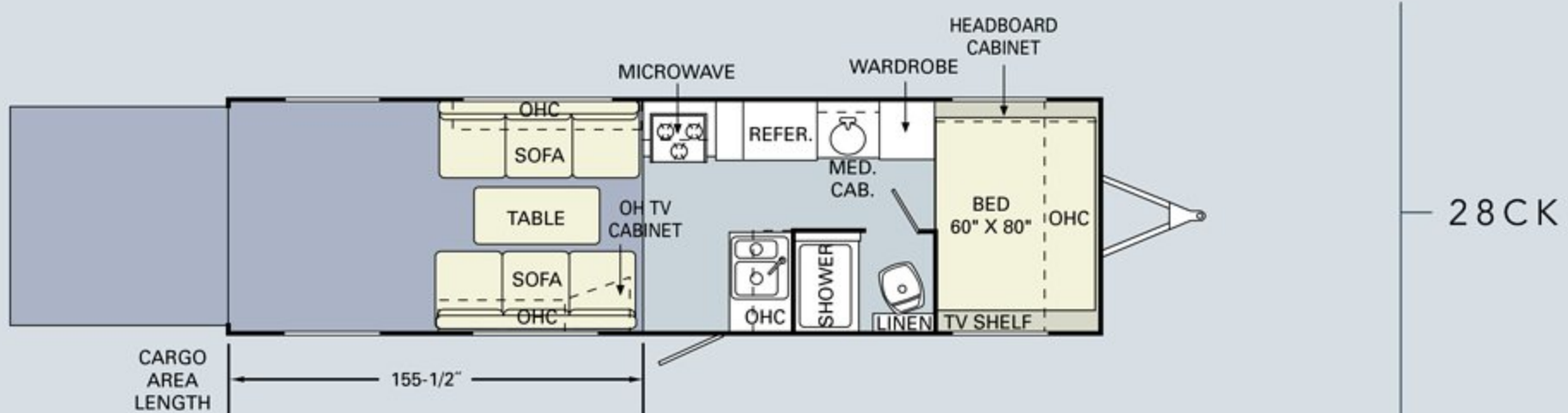
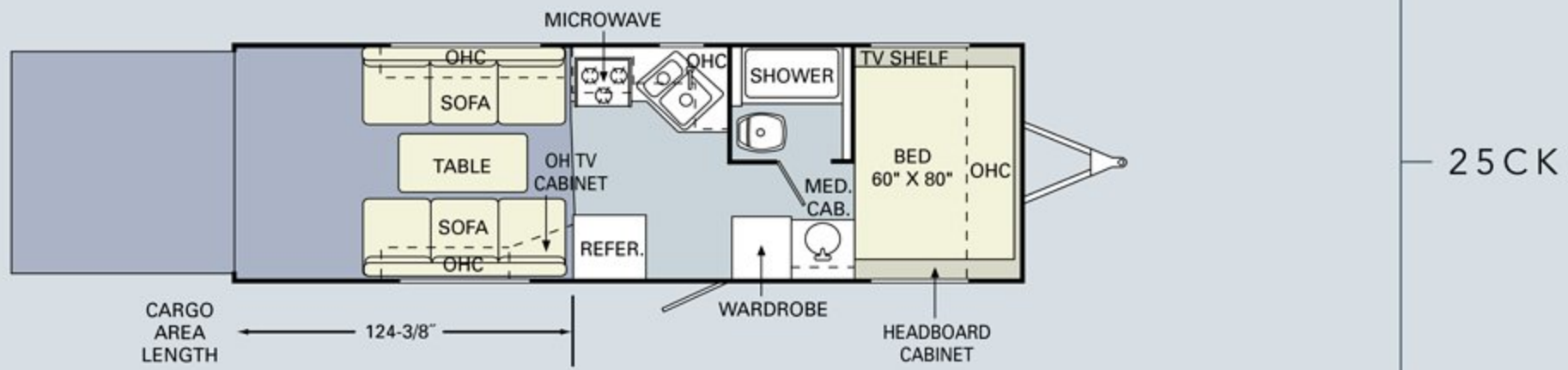
Applies to certain models. See owner's manual for complete details.



WINDOWS, DOORS AND AWNINGS: FEATURES		OPTIONS
<ul style="list-style-type: none"> <li>Mirrored Radius Windows</li> <li>Main Radius Entrance Door with Anti-Skid Steps</li> </ul>	<ul style="list-style-type: none"> <li>Swing-Out Entry Door Handle</li> </ul>	<ul style="list-style-type: none"> <li>Checkered Flag Textured Fabric Awning</li> <li>Carefree® Outback Awning</li> </ul>
WINDOW TREATMENTS: FEATURES		
<ul style="list-style-type: none"> <li>Brushed Nickel Mini Blinds</li> <li>Rear Cargo Area: Upper Bunk Windows with Glide Tape Top and Bottom</li> </ul>	<ul style="list-style-type: none"> <li>Padded Valances and Lambrequins Throughout</li> </ul>	
SAFETY: FEATURES		
<ul style="list-style-type: none"> <li>Fire Extinguisher — 10 Lb.</li> <li>Deadbolt Lock(s) on Entrance Door(s)</li> <li>120V GFI Protected Outlets</li> </ul>	<ul style="list-style-type: none"> <li>Breakaway Switch</li> <li>LP Gas Detector</li> <li>Smoke Detector</li> </ul>	<ul style="list-style-type: none"> <li>Egress Window(s)</li> <li>Safety Glass</li> </ul>
<p>Due to the large variety of options and floorplan arrangements available to our customers, actual weights for each unit can differ significantly. Holiday Rambler provides a weight sticker on each unit we produce which includes that unit's tank capacities and approximate weight. Consult your local Holiday Rambler dealer for unit availability and further information.</p> <p>The information printed in this brochure reflects product design, fabrication, and component parts at the date of printing. The manufacturer reserves the right, at any time, to make changes in product design or material or component specifications as its sole option, without notice. This includes the substitution of components of a different brand or trade name, which will result in comparable performance. All information printed in this brochure is subject to change after the date of printing. Some features shown or mentioned in this brochure are optional and may only be available in selected floorplans. Photographs may show props or decorations that are not standard equipment on Holiday Rambler models. Holiday Rambler, the HR logo and its design, are registered trademarks. All other products and company names are trademarks and/or registered trademarks of their respective holders.</p> <p>While the color of the towable's exterior and the interior fabrics depicted in this sales brochure are fair and reasonable depictions, the colors depicted may not be an exact match of the actual colors because of the variances in photo-processing and variances caused by inserting the photographs within the sales brochure. Due to product improvements, changes during the model year and/or transcription errors that may occur, information represented within this brochure may not be accurate at the time of your purchase. If certain information is significant to your purchasing decision, please confirm the information with your dealer prior to submitting your order.</p> <p>The actual overall length of the recreational vehicle may differ from that indicated in the brochure due to variances in the manufacturing process and/or installed components. The actual length may be greater or less than that indicated.</p> <p>Component part and appliance manufacturers issue limited warranties covering those portions of the recreational vehicle not covered by the Limited Warranties issued by Monaco Coach Corporation. To learn which specific component parts and appliances are excluded from the Limited Warranties issued by Monaco Coach Corporation, please contact your selling dealership or Monaco Coach Corporation directly, or review the warranty packet inside the recreational vehicle.</p>		

Weights*	25CK	28CK	31CK
Gross Vehicle Weight Rating (Lbs.)	12,100	12,100	12,100
Hitch Weight (Lbs.)	960	1,210	1,140
Axle(s) Weight (Lbs.)	6,000 (2)	6,000 (2)	6,000 (2)
Unloaded Vehicle Weight (Lbs.)	7,230	7,450	7,810
Net Carrying Capacity (NCC) (Lbs.)	4,870	4,650	4,290
Tire Size	16"	16"	16"
Tire Load Range	E	E	E
Measurements			
Overall Length	27' 8"	30' 8"	33' 8"
Overall Height (Including A/C)	11' 7"	11' 7"	11' 7"
Exterior Width	102"	102"	102"
Awning Length	17'	16'	18'
Tank Capacity**			
Water Heater (Gal.)	10	10	10
Gray Tank (Gal.)	30	40	40
Black Tank (Gal.)	30	40	40
Fresh Tank (Gal.)	100	100	100
LP Tank (Gal.)***	30 (2)	30 (2)	30 (2)
<p>* Weights may vary by options.</p> <p>** Variances in the fabrication and installation of the tanks may cause the actual "usable capacity" to be greater or less than the capacities designated above.</p> <p>*** Actual filled LP capacity is 80% of listing due to safety shut-off required on tank.</p>			







# Next Level

BY HOLIDAY RAMBLER



Thank you for taking a closer look at the 2006 Next Level fifth wheels and travel trailers. In addition to their many creature comforts, these lightweight, value-packed toy haulers include countless conveniences you'll want to experience firsthand. Poke around. Kick the tires. Open and shut every door and drawer — twice. You can count on our expert sales team to answer all your questions and demonstrate why this truly is the best RV experience the road has to offer.



HOLIDAY RAMBLER®

*This is Living®*

606 Nelson's Parkway Wakarusa, IN 46573

[www.holidayrambler.com](http://www.holidayrambler.com)  
(800) 245-4778



MONACO COACH CORPORATION

Monaco is traded on the New York Stock Exchange under the listing MNC.  
© 2005, Monaco Coach Corporation 8/05 NPN:BROHNEX Litho in USA.

