

20
SCEPTER®
06


HOLIDAY RAMBLER®
This is Living.





ELEGANCE. WITH A SPOONFUL OF ATTITUDE.

Even luxury has its sporty side — and it's called Scepter. Designed to wow you with the precision performance of its Roadmaster chassis and the zip of 400 horsepower, this coach shares your youthful state of mind. It's also styled to grab some attention, with its contemporary front cap, deluxe full-body paint and fashion-forward interior decors. As you look through these pages, you'll find a wide range of exciting features and innovative floorplans designed to keep pace with your adventure-filled lifestyle. Yes, this is luxury designed to make a lasting impression. The 2006 Scepter.



A HIGHER STATE OF MIND.

As you step inside the Scepter, you'll immediately notice that you can stand tall and still feel a remarkable spaciousness — thanks to a full seven feet of ceiling height. You'll also notice you've entered a living area that's worthy of being called a home. Special care has gone into the many residential-style details, most notably the woodwork, with raised panel cabinet doors, crown molding and hardwood slide-out fascia with a carved design. And throughout the coach, you'll find stylish satin nickel hardware, faucets and decorative light fixtures.

A) The spaciousness extends into the bedroom, with roomy wardrobe, dresser and overhead cabinet storage. The queen bed with hardwood headboard is flanked by polished solid surface nightstands, and you have the option of a luxurious pillow top mattress. On select floorplans, you also have the option of a king bed. A 20" color TV is nestled neatly in an overhead cabinet, and a versatile option is the bedroom clock radio/CD/DVD player.



WE CALL IT FASHION-FORWARD. YOU'LL CALL IT COZY.

The Scepter's living area features a unique blend of cutting-edge styling and good old-fashioned creature comforts. Underfoot you'll enjoy padded designer carpeting. And to customize your floorplan to suit your lifestyle, you have a wide range of furniture choices, including an Ultraleather™ Euro-recliner with heat and massage functions and an ottoman. The window treatments also feature a distinctive design — with fabric valances and hardwood accents.



- A) By day, this Ultraleather™ hide-a-bed sofa provides plush, durable seating.
- B) At night the hide-a-bed sofa becomes a comfortable bed with remote controlled air mattress.
- C) Day/Night pleated blackout shades in the living area and bedroom offer both privacy and room darkening.
- D) You'll enjoy the convenience of a one-piece shower with a single-handle faucet and a slide-bar. The beautiful styling of the enclosure features a satin nickel frame with decorative glass and two handy towel bars.









A

POSITIVELY GLEAMING.

In the kitchen, the warmth of the cabinetry is beautifully contrasted with the contemporary polished solid surface countertop and V-grooved Corian® backsplash. You'll also love the sleek styling and carefree upkeep of the ceramic tile flooring. At the sink you'll have the convenience of a single-handle faucet with pullout sprayer, as well as a separate faucet for filtered water. Storage is also plentiful, with a built-in space for the sink and cooktop covers, a rollout pantry with a Corian® top (not available on the 40PET) and overhead cabinets with an adjustable shelf.



B



C

- A) The kitchen gleams with stylish stainless steel appliances, including this large four-door Norcold® wraparound refrigerator with ice maker.
- B) Matching the countertops is this legless polished solid surface table with two dinette chairs and two folding chairs. In the 40PAQ, the large dining area with four large windows features a round hardwood table.
- C) In the bathroom, you'll find plenty of room to keep things neatly put away in the vanity storage and lighted, mirrored medicine cabinet. The polished solid surface countertop with integrated sink has a beautiful seamless look and is easy to wipe down.

EVERY DAY, YOU CHOOSE THE VIEW.

Behind the wheel of the Scepter, the journey truly is the destination, and we give you more ways than ever to enjoy the ride. Comfort reigns in the cockpit, with plush, durable Ultraleather™ seats (OptimaLeather™ in the Liz Claiborne decors) that feature integrated (not wall-mounted) seat belts, six-way power controls on the pilot's side, and a power footrest for the co-pilot. Above the cockpit are the built-in cabinets for the entertainment features, including the 24" flatscreen TV (or optional 32" LCD TV), the home theater system with VCR/DVD player and surround sound speakers, and an optional digital satellite system.



1-PIECE WINDSHIELD

You'll have the largest, and safest, unobstructed view in the industry, thanks to our exclusive Panaview™ 1-piece windshield. Slender side pillars increase your peripheral vision and the wipers are conveniently mounted below your line of sight. The exterior mirrors with turn signals are also mounted on the front cap — so you don't have to turn your head away from the road. And inside the cockpit, power sunvisors and pull-down sunshades eliminate dangerous glare.



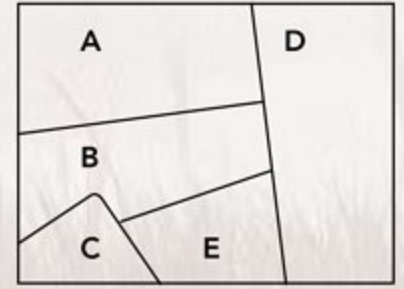


- A) The Scepter's sporty dash features a charcoal metallic and gray diamond brush instrumentation panel. The lighted VIP Smartwheel® is Multiplexed with controls for the wipers, ICC and cruise control. On your right is the color monitor for the rear vision system with audio and adjustable camera. An attractive upgrade is the optional 3-camera system with adjustable center camera, and you also have the option of an Aladdin™ Junior system to help you track vital coach functions.
- B) The Onan® 8.0 kW Quiet Diesel generator is accessed through the front cap on a manual slide-out tray, for easy servicing.
- C) Thanks to the truss system of the Roadmaster chassis, you have large pass-through storage spaces that are perfect for sports equipment and patio furniture. This standard slide-out tray (Bay 3) makes it a snap to load and unload. An optional tray is also available.
- D) This well-organized service bay makes your hook-up chores easier than ever. You'll find a hot and cold water shower as well as towel and soap dispensers to keep things tidy. To make things go even faster, you may include an optional power water hose reel and/or the RV Sani-Con tank drainage system.

WHERE ALL THE DETAILS COME TOGETHER.

Holiday Rambler has long set the standard with warm, inviting interiors that feature a perfect harmony of fabrics, accents and carpeting. We've also led the way with stunning woodwork and superb craftsmanship, including solid wood raised panel cabinet doors, lined shelves and heavy-duty ball bearing guides. Select the combination that suits you best to customize your Scepter and make it distinctively your own.

- A. BEDSPREAD
- B. SOFA
- C. CORIAN®
- D. ACCENT
- E. CARPET



CANYON MOSAIC featuring fabrics by Liz Claiborne



BLACKWOOD MANOR II featuring fabrics by Liz Claiborne

EXTERIOR COLORS/WOODS/FABRICS

BETTER STAIN PROTECTION



Manufactured in, not added on. For added protection against stains, soil repellent is applied to virtually all upholstery fabric during the finishing process for superior coverage.*

*Brand and application of upholstery fabric protection may vary depending on date recreational vehicle was manufactured.

SCEPTER HARDWARE

Our elegant cabinet hardware design features a satin nickel finish.



NATURAL OAK



STAINED OAK



SPICED MAPLE



BUCKINGHAM BLUE



MALACHITE GREEN



URBAN OASIS



NATURAL CHERRY



STAINED CHERRY

ROADMASTER R-SERIES CHASSIS

Thanks to the Roadmaster RR8S-Series chassis, the 2006 Scepter delivers the very best performance in its class. That's because the chassis is designed to the highest standards for a luxury motorcoach and is custom-built to the exact specifications of each floorplan. You'll enjoy its smoother ride, superior front-to-rear balance and many sophisticated features. We invite you to take a few minutes and discover all the ways Roadmaster offers you the very best in safety, reliability, comfort and convenience.



Equipped with a steel firewall for added safety.

The main rails feature an exclusive raised rail design which provides for larger full pass-through storage bays with flush floors. Other highlights include a 3/8" thick frame rail — compared to the 1/4" of other manufacturers — and a stacked aluminum intercooler and radiator for optimum heat transfer and cooling.

The power steering box allows for a 50-degree front wheel turn angle in both directions for better maneuverability and returns the steering wheel back to its center position to eliminate driver fatigue.

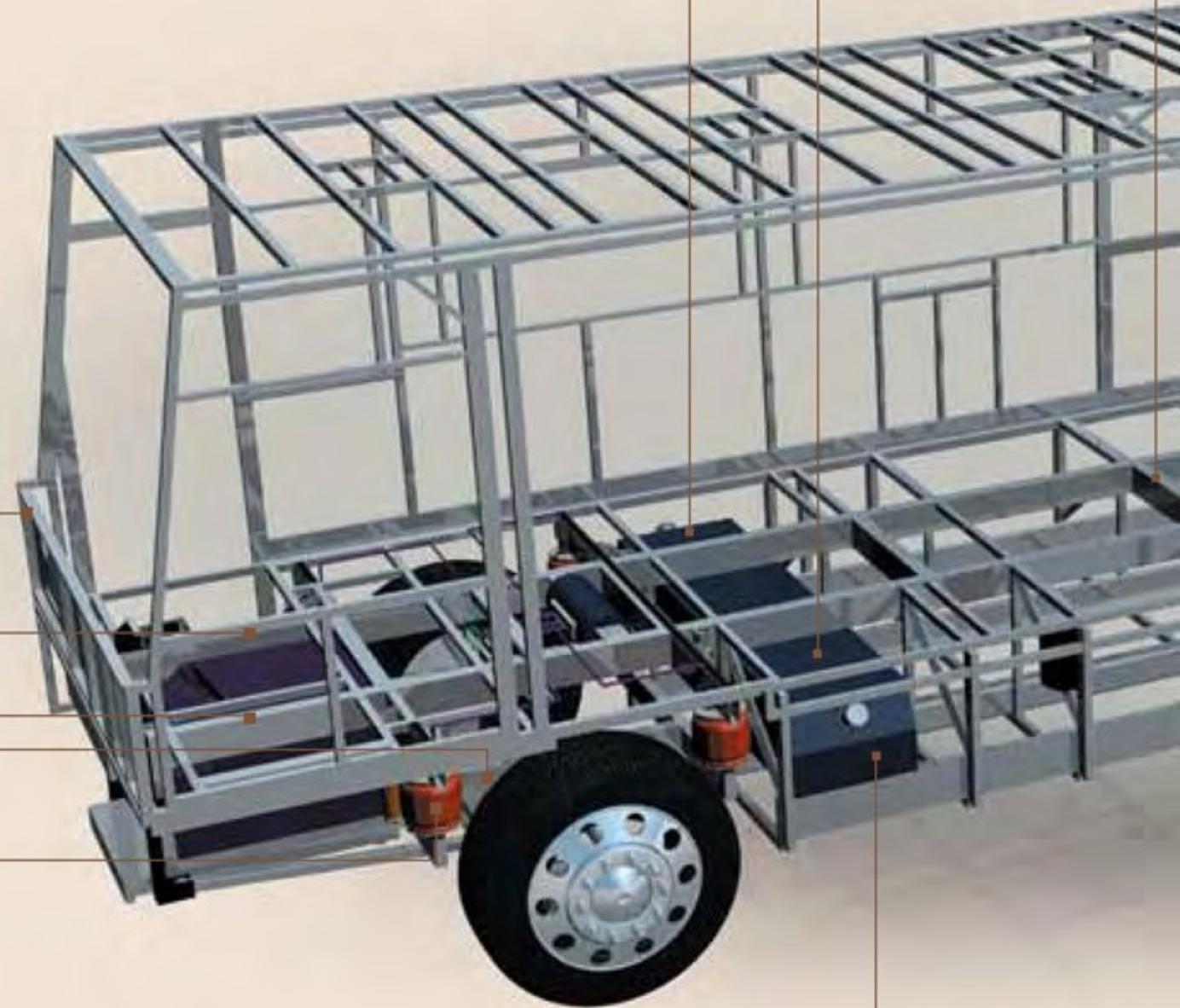
Eight outboard mounted air bags work in conjunction with gas-powered shock absorbers to prevent road trauma from ever reaching the coach.

Three monitored leveling sensors (two in the rear, one in the front) continually adjust the air pressure within each air bag to maintain a level ride and eliminate nosediving, weight transfer and floating on curved roads. This system also stabilizes the coach side to side on uneven roads and while maneuvering through curves.

Truss System with Rust Inhibitor:

This steel truss system is engineered as part of the chassis and provides outstanding strength and rigidity plus pass-through storage. In addition, the structure is pre-primed and coated with a rust-inhibiting paint.

Dual fuel fill allows you to fill the tank from either side of the coach, for greater convenience and flexibility at the pump.



The aluminum fuel tank is lightweight and resists corrosion, unlike steel tanks.

SLIDE-OUT CONSTRUCTION:

When you get a Holiday Rambler, you can be sure the slide-out boxes are some of the strongest and most reliable you'll find anywhere. They feature our exclusive multi-layer construction to give you maximum insulation and to reduce the chance of warping, twisting or shifting.



SIDEWALL CONSTRUCTION: (left to right)

- High-gloss gel coat fiberglass
- 1 1/2" thick Dow Structure Foam® insulation
- 1 1/2" x 1 1/2" square tubular aluminum frame
- 1/8" luaun
- Wallpaper

Cummins® ISL 400 Diesel Engine:

You'll enjoy the peerless performance of the Cummins® ISL 400 electronic engine and the Allison® 3000 MH 6-speed World Transmission with electronic shifter. This powertrain offers 1200 lbs./ft. torque for maximum uphill performance. In addition, our exclusive use of synthetic transmission fluid allows for up to three-year maintenance intervals for the transmission.



ROOF CONSTRUCTION: (top to bottom)

- Seamless one-piece crowned smooth gelcoat fiberglass roof
- Luaun backing
- 2 1/2" thick, tapered bead foam insulation
- 1 1/2" x 3" aluminum I-beam superstructure on 16" centers is filled with 3" fiberglass insulation
- Vapor barrier
- Structure foam: thermal insulative barrier
- 1/2" bead foam insulation
- Foam padding for extra insulation
- Padded vinyl ceiling

A 10,000 lb. tow hitch rating is the highest in its class.

Engine Mounting:

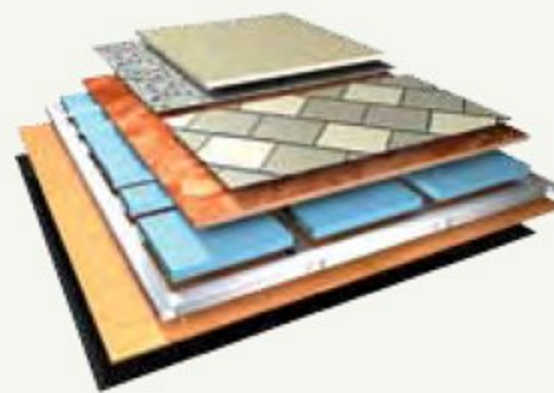
The three-point engine mounting system lowers the coach's center of gravity and reduces the amount of vibration that reaches the coach. The mounting also makes the engine easier to service by allowing the engine to be easily lowered through the bottom of the coach.

The side-mounted aluminum radiator and intercooler reduce weight, are rust-resistant and deliver better heat transfer than steel cooling components.

Automatic Traction Control (ATC) eliminates wheel slippage in slick conditions and heightens control. The Anti-Lock Braking system (ABS) gives you superior stopping power, especially on steep grades. Together, these sophisticated systems offer the very best safety on the road.

Air Bags and Shocks:

The cushion air glide suspension system with eight outboard mounted air bags and eight gas shock absorbers combine with ride height sensors (two in rear, one in front) to deliver better ride and handling.



FLOOR CONSTRUCTION: (top to bottom)

- Carpet pad and carpeting or tile
- Structurwood™
- 1 1/2" Dow Structure Foam® insulation
- 1 1/2" x 1 1/2" square tubular frame
- 1/8" luaun
- Waterproof Darco underbelly

BODY CONSTRUCTION: FEATURES		OPTIONS
<ul style="list-style-type: none"> Aluminum Superstructure Seamless One-Piece Crowned Smooth Gel Coat Fiberglass Roof 84" Interior Height All-Season Foam Insulated Roof Laminated Smooth Gel Coat Fiberglass Exterior Walls Front Molded Fiberglass Cap Rear Molded Fiberglass Cap with Integrated Air Intake Panaview™ 1-Piece Windshield One-Piece Generator Access Door Rear Engine Doors with Struts Angled Fiberglass Engine Cover Electric Flush-Mount Stepwell Cover Laminated Metal Framed Floor on Metal Trusses with Foam Insulated Floor Framing with Luaun Backer 	<ul style="list-style-type: none"> Laminated Structurwood™ Flooring Dual Head Power Controlled Heated Exterior Mirrors with Turn Indicator Lights Docking Lights Side-Hinged Baggage Doors with Redesigned Extrusion and Latch Locations 3M Film Front Mask Full-Length Holiday Rambler Mud Flap Storage Bay Slide-Out Tray — Pass-Through (Bay 3) Ozite Lined Pass-Through Storage Compartments Flush-Mount Metal Fuel Doors Deluxe Full-Body Paint Interior Entry Step Storage Roof Ladder Undercoating 	<ul style="list-style-type: none"> Standard Run Savings Package Includes: 3-Camera Rear Vision System with Audio and Adjustable Center Camera, 32" LCD TV with Remote in Front Cockpit Overhead, Solid Surface Kitchen Sink, Pillow Top Mattress, Auto Generator Start, 50 Amp Electric Power Cord Reel, RV Sani-Con Tank Drainage System, Electric Automatic Winterization Storage Bay Slide-Out Tray — Pass-Through (Bay 4) Exterior Sunscreens
CHASSIS/ENGINE/SUSPENSION: FEATURES		OPTIONS
<ul style="list-style-type: none"> Roadmaster RR8S-Series Chassis (N/A: 42DSQ) Roadmaster RR10S-Series Chassis (42DSQ) Cummins® ISL 400 Electronic Engine with Allison® 3000 MH 6-Speed World Transmission and Electronic Shifter Torque (@ 1,300 RPMs) 1200 lbs./ft. Max. Engine Displacement: 8.8L/540 Cu. In. Aluminum Side-Mount Radiator with CAC Cooler Dual Fuel Fill 160 Amp Alternator Rear Axle Ratio: 4.30:1 Goodyear Radial Tires: 295/80R/22.5 	<ul style="list-style-type: none"> Polished Aluminum Wheels Cushion Air Glide Suspension with Eight Outboard Mounted Air Bags and Eight Monroe Shock Absorbers Anti-Lock Braking System with Front Disc Brakes and Rear Drum Brakes Tag Axle with Anti-Lock Braking System (42DSQ) Automatic Traction Control PAC Exhaust Brake Auto Slack Adjusters on Brakes Pre-Wire for Supplemental Braking System Engine Block Heater 	<ul style="list-style-type: none"> Fully Automatic Leveling System 10,000 Lb. Hitch Receiver with Four/Seven-Pin Connector
COCKPIT: FEATURES		OPTIONS
<ul style="list-style-type: none"> Automotive Dash with Charcoal Metallic and Gray Diamond Brush Instrumentation Panel Color Rear Vision System with Audio and Adjustable Camera In-Dash AM/FM/CD Player with Sirius-Ready Compatibility CB Prep with Antenna Power Sunvisors Adjustable Brake and Accelerator Pedals 110V, 12V and Phone Outlet 110V Outlet on Driver's Console Lighted VIP Smartwheel® Multiplexed Steering Wheel with Controls for Windshield Wipers, ICC and Cruise Control 	<ul style="list-style-type: none"> Intermittent Windshield Wipers 6 Quart Tank for Windshield Fluid with Fluid Sensor to Tank and Low Wash Indicator on Dash Audible Turn Signals Cruise Control Light on Dash Roof-Mounted Dual Trumpet Air Horns Ultraleather™ Six-Way Power Pilot Seat and Co-Pilot Seat with Power Footrest New Style Distressed OptimaLeather™ Pilot and Co-Pilot Seats with Blackwood Manor II and Canyon Mosaic, Decors by Liz Claiborne Pilot and Co-Pilot Pull-Down Sunshades Carpeted Driver and Passenger Floor Mats 	<ul style="list-style-type: none"> 10 Disc CD Changer 3-Camera Rear Vision System with Audio and Adjustable Center Camera Auxiliary Defroster Aladdin™ Junior System
APPLIANCES AND ACCESSORIES: FEATURES		OPTIONS
<ul style="list-style-type: none"> Norcold® Wraparound Stainless Steel 12 Cu. Ft. 2-Way 4-Door Refrigerator with Ice Maker Recessed High-Output Cooktop with Two Burners and Flush-Mount Covers Stainless Steel Spacesaver Convection Microwave with Touch Control 24" Flatscreen Color Stereo TV with Remote Control in Front Cockpit Overhead Home Theater System with DVD/VCR Player with Surround Sound Speakers 	<ul style="list-style-type: none"> 20" Color TV with Remote Control in Bedroom TV Antenna with Video Switching Box and Booster Exterior Hook-Ups for DSS Dish and Cable Digital Satellite System Prep Cable TV Hook-Up and Telephone Jacks Exterior Gas Line Hook-Up for LP Accessories Washer/Dryer Prep 	<ul style="list-style-type: none"> Dometic Sidewise Stainless Steel 14 Cu. Ft. 2-Way 2-Door Refrigerator with Ice Dispenser in the Door Combination Washer/Dryer 32" Flatscreen LCD TV in Front Cockpit Overhead Bedroom Clock Radio AM/FM/CD/DVD Player Fully Automatic Digital Satellite System In-Motion Digital Satellite System

INTERIOR: FEATURES		OPTIONS
<ul style="list-style-type: none"> • Stained or Natural Oak Cabinetry • Solid Wood Raised Panel Cabinet Doors • Hardwood Veneer Paneling • Crown Molding in Bedroom and Living Area • Lined Cabinet Shelves • Heavy-Duty Ball Bearing Drawer Guides • Satin Nickel Cabinetry Hardware • Satin Nickel Bath Accessories • Radius Polished Solid Surface Kitchen Countertop with Stainless Steel Sink with Two Sink Covers • Roll-Out Pantry in Kitchen Base Cabinet with Corian® Top (N/A: 40PET) • Decorative Polished V-Grooved Corian® Backsplash in Galley and Lavatory • Polished Solid Surface Bathroom Countertop with Integrated Sink • Kitchen Overhead Cabinets with Adjustable Shelf • Silverware Drawer with Organizer Kitchen Base Cabinets • Sink and Stove Top Cover Storage Area inside Kitchen Base Cabinet (N/A: 40PET) • Ceramic Tile Flooring in Kitchen and Bathroom 	<ul style="list-style-type: none"> • Designer Carpeting in Living Area and Bedroom • Engine Rug Cover • Flooring in Front of Rear Bedroom Cabinet Area to Match Kitchen Floor • Tile Entry Floor • Soft Touch Padded Vinyl Ceiling • Hardwood Slide-Out Fascia with Carved Design • Fabric Valances with Hardwood Accents Throughout • Solid Wood Raised Panel Bathroom Door • Oversized Rear Wardrobe Closet with Satin Nickel Mirrored Door Frames • Hardwood Headboard • Bedroom Nightstands with Polished Solid Surface Countertops • Bedroom Dresser with Polished Solid Surface Countertop and Integrated Hamper • Decorative Mirror on Wall by Refrigerator • Bedspread, Pillow Shams and Decorative Pillows • Day/Night Pleated Blackout Shades in Living Area and Bedroom (Mini Blinds in Private Bath) • Soil Repellant Protection on Fabric 	<ul style="list-style-type: none"> • Decors: Urban Oasis, Buckingham Blue, Malachite Green • Special Decors: Blackwood Manor II and Canyon Mosaic Featuring Fabrics by Liz Claiborne • Wood Choice: Stained Cherry, Natural Cherry, Spiced Maple • Solid Surface Kitchen Sink
FURNITURE: FEATURES		OPTIONS
<ul style="list-style-type: none"> • Legless Polished Solid Surface Dinette Table with Two Dinette Chairs and Two Folding Chairs (N/A: 40PAQ) • Round Dinette Table with Two Dinette Chairs and Two Folding Chairs (40PAQ) • Roadside Furniture: DE Sleeper Sofa • Curbside Furniture: DE Sleeper Sofa (N/A: 40PAQ) • Curbside Furniture: OptimaLeather™ Euro-Recliner with Ottoman, Heat and Massage (40PAQ) • Queen Bed with Polished Solid Surface Nightstands 	<ul style="list-style-type: none"> • King Bed with One Nightstand (38PDQ, 40PAQ, 40PDQ, 42DSQ) • Roadside Furniture: Fabric Hide-A-Bed Sofa with Air Mattress (N/A: 38PDQ) • Roadside Furniture: Fabric Ultra Flex Relaxation Center (N/A: 38PDQ, 42DSQ) • Curbside Furniture: Computer Workstation with 32" LCD TV and Ultraleather™ Euro-Recliner with Ottoman, Heat and Massage (N/A: 38PDQ, 40PAQ) 	<ul style="list-style-type: none"> • Curbside Furniture: Ultraleather™ Hide-A-Bed Sofa with Air Mattress (40PAQ, 40PET) • Curbside Furniture: Ultraleather™ DE Sofa (N/A: 40PAQ) • Curbside Furniture: Ultraleather™ J-Lounge with Drawer (N/A: 40PAQ) • Pillow Top Mattress • Booth Dinette (N/A: 40PET, 40PAQ)
ELECTRICAL SYSTEMS AND LIGHTS: FEATURES		OPTIONS
<ul style="list-style-type: none"> • 50 Amp 12V Distribution Panel and Power Cord with Quick Disconnect • Onan® 8.0 kW Quiet Diesel Generator on Manual Slide-Out (N/A: 42DSQ) • Onan® 10 kW Quiet Diesel Generator on Manual Slide-Out (42DSQ) • Energy Management System • Slide-Out Battery Tray • Four 6V Deep Cycle House Batteries • Two 12V Heavy-Duty Chassis Batteries • Battery Disconnect Switch at Front Door • Battery Boost Switch in Cockpit • 2,000 Watt Inverter • Porch Light • Lighted Exterior Power Entry Step • Lighted Interior Entry Steps • Lights in Outside Storage Compartments • 120V Receptacles in Outside Storage Compartment • Exterior Tank Monitoring Gauges 	<ul style="list-style-type: none"> • Underhood Utility Light • Computer Hook-Up with Phone Jack in Dinette Area • Directional Map Lights on Bottom of TV Cabinets • Pilot and Co-Pilot Map Lights • Fluorescent Light under Kitchen Overhead • Fluorescent Ceiling Lights Throughout • Fluorescent Ceiling Lights inside Living Area Slide-Out House • Decorative Framed Galley Fluorescent Light • Satin Nickel Decorative Lighting in Living Room, Dinette, Bath and Bedroom • Halogen Lights under Living Room, Dining Room and Bedroom Dresser Overhead Cabinets • Satin Nickel Decorative Vanity Light • Rope Lighting in Bath Toe Kicks • Convenience Center Located in Hallway • Pre-Wire for Solar Panel 	<ul style="list-style-type: none"> • Auto Generator Start • Solar Panel • 50 Amp Electric Power Cord

PLUMBING AND LP SYSTEMS: FEATURES		OPTIONS
<ul style="list-style-type: none"> • Demand Water System and Water Pump • 10 Gallon LP Gas/Electric Water Heater with Electronic Ignition, (Delivers up to 16 Gallons of Hot Water) • Single Lever Satin Nickel Kitchen Faucet with Pullout Sprayer • Separate Satin Nickel Faucet for Filtered Water • Single Handle Satin Nickel Bath Faucet • Single Handle Satin Nickel Shower Faucet with Slide Bar • Exterior Tank Monitoring Gauges • Water Heater Bypass Valve 	<ul style="list-style-type: none"> • Water Pump Switch in Convenience Center, Service Bay and Bath • China Toilet • Electronic Silent Plus China Toilet in Rear Bath (42DSQ) • Shower inside Wet Bay with Hot/Cold Water • No-Fuss Flush Holding Tank Rinsing System • Gravity and Pressurized Water Fill • Insulated Systems Compartment with Easy Access to Hook-Up • Sewer Hose Storage • One-Piece Shower • Satin Nickel Shower Door Frame with Decorative Glass 	<ul style="list-style-type: none"> • Power Water Hose Reel • RV Sani-Con Tank Drainage System • Electric Automatic Winterization • Bathtub (Std. 42DSQ)
HEATING, VENTS AND AIR CONDITIONING: FEATURES		OPTIONS
<ul style="list-style-type: none"> • Dual 13.5M BTU Roof Air Conditioners with Ducted Air, Heat Pumps and Digital Thermostat Control (N/A: 42DSQ) • Three 13.5M BTU Roof Air Conditioners with Wall Thermostat and Heat Pump (42DSQ) • Air Conditioner Drain Tubes • Dual Zone Electronic Ignition Furnaces (1) 31M BTU, (1) 20M BTU • Electronic Air Conditioner/Heat Climate Control System 	<ul style="list-style-type: none"> • In-Floor Ducted Heating System • Fantastic 12V Attic Fan with Rain Sensor and Electronic Wall Thermostat in Kitchen and Hall Bath • Fantastic 12V Attic Fan in Private Bath with Wall Control of Automatic Dome and Fan Power • 12V Heater in Wet Bay 	<ul style="list-style-type: none"> • Hydro-Hot Water and Heating System • Fantastic 12V Attic Fan with Rain Sensor and Electronic Wall Thermostat — Private Bath
WINDOWS, DOORS AND AWNINGS: FEATURES		OPTIONS
<ul style="list-style-type: none"> • Radius Flush-Mount Dual Pane Safety Glass Dark Tinted Slider Windows • Front Entry Door with Removable Screen and Anti-Skid Steps • Keyless Entry with Baggage Door Lock Release • Exterior Grab Handle • Metal Interior Grab Handle at Entry Door and on Dash across from Passenger Seat 	<ul style="list-style-type: none"> • Eclipse Automatic Patio Awning • Automatic Front Door Awning • Topper Slide-Out Awnings Living Area and Bedroom • Window Awnings on All Windows except Slide-Out Windows under Patio Awning • Tinted Skylight in Bathroom with Protecta Glaze 	<ul style="list-style-type: none"> • Mirage Automatic Patio Awning (40PDD, 40PRT) • Apex Mirage Patio Awning (38PDQ, 40PDQ, 40PET, 42DSQ)
SAFETY: FEATURES		
<ul style="list-style-type: none"> • Fire Extinguisher • Deadbolt Lock on Entrance Door • 120V GFI Protected Circuit • LP Gas Detector • Smoke Detector 	<ul style="list-style-type: none"> • Carbon Monoxide Detector • Driver and Passenger Three-Point Integrated Seat Belts • Third Brake Safety Light • Egress Windows 	

Due to the large variety of options and floorplan arrangements available to our customers, actual weights for each unit can differ significantly. Holiday Rambler provides a weight sticker on each unit we produce which includes that unit's tank capacities and approximate weight. Consult your local Holiday Rambler dealer for unit availability and further information.

The information printed in this brochure reflects product design, fabrication, and component parts at the date of printing. The manufacturer reserves the right, at any time, to make changes in product design or material or component specifications as its sole option, without notice. This includes the substitution of components of a different brand or trade name, which will result in comparable performance. All information printed in this brochure is subject to change after the date of printing. Some features shown or mentioned in this brochure are optional and may only be available in selected floorplans. Photographs may show props or decorations that are not standard equipment on Holiday Rambler models. Holiday Rambler, the HR logo and its design, are registered trademarks. All other products and company names are trademarks and/or registered trademarks of their respective holders.

While the color of the motorhome's exterior and the interior fabrics depicted in this sales brochure are fair and reasonable depictions, the colors depicted may not be an exact match of the actual colors because of the variances in photo-processing and variances caused by inserting the photographs within the sales brochure. Due to product improvements, changes during the model year and/or transcription errors that may occur, information represented within this brochure may not be accurate at the time of your purchase. If certain information is significant to your purchasing decision, please confirm the information with your dealer prior to submitting your order.

The actual overall length of the recreational vehicle may differ from that indicated in the brochure due to variances in the manufacturing process and/or installed components. The actual length may be greater or less than that indicated.

Component part and appliance manufacturers issue limited warranties covering those portions of the recreational vehicle not covered by the Limited Warranties issued by Monaco Coach Corporation. To learn which specific component parts and appliances are excluded from the Limited Warranties issued by Monaco Coach Corporation, please contact your selling dealership or Monaco Coach Corporation directly, or review the warranty packet inside the recreational vehicle.

Weights	38PDQ	40PDD	40PET	40PAQ	40PDO	40PRT	42DSQ
Gross Vehicle Weight Rating (Lbs.)	34,600	34,600	34,600	34,600	34,600	34,600	44,600
Gross Combined Weight Rating (Lbs.)*	44,600	44,600	44,600	44,600	44,600	44,600	54,600
Front Gross Axle Weight Rating (Lbs.)	14,600	14,600	14,600	14,600	14,600	14,600	14,600
Rear Gross Axle Weight Rating (Lbs.)	20,000	20,000	20,000	20,000	20,000	20,000	20,000
Tag Axle Weight Rating	N/A	N/A	N/A	N/A	N/A	N/A	10,000

Measurements							
Wheelbase	248"	272"	272"	272"	272"	272"	270 1/4"
Overall Length	38' 7 3/4"	40' 7 3/4"	40' 7 3/4"	40' 7 3/4"	40' 7 3/4"	40' 7 3/4"	42' 7 3/4"
Overall Height with A/C (without DSS)	12' 10"	12' 10"	12' 10"	12' 10"	12' 10"	12' 10"	12' 10"
Interior Height	84"	84"	84"	84"	84"	84"	84"
Interior Width	96"	96"	96"	96"	96"	96"	96"
Exterior Width	100.5"	100.5"	100.5"	100.5"	100.5"	100.5"	100.5"

Tank Capacities**							
Water Heater (Gal.)	10	10	10	10	10	10	10
Gray Tank (Gal.)	60	60	60	60	60	60	60
Black Tank (Gal.)	40	40	40	40	40	40	40
Fresh Tank (Gal.)	100	100	100	100	100	100	100
LP Tank (Gal.)***	55	55	55	55	55	55	55
Fuel Tank (Gal.)	130	130	130	130	130	130	130

* Towing capacity is limited by GCWR; your vehicle's towing capacity is the difference between the GCWR and the actual vehicle weight, including all water, fuel, passengers and cargo. Your towed vehicle should be equipped with auxiliary brakes if the weight of the towed vehicle exceeds 1,000 lbs. Consult your Owner's Manual for further towing information.

** Variances in the fabrication and installation of the tanks may cause the actual "usable capacity" to be greater or less than the capacities designated above.

*** Actual filled LP capacity is 80% of listing due to safety shut-off required on tank.

AT HOLIDAYRAMBLER.COM, WE'RE ALWAYS OPEN.

Visit our website anytime day or night to check out the latest product news and updates. You can also take a factory tour, find a dealer near you, get information on club events and much more. It's also an easy way to contact us via e-mail.

www.holidayrambler.com

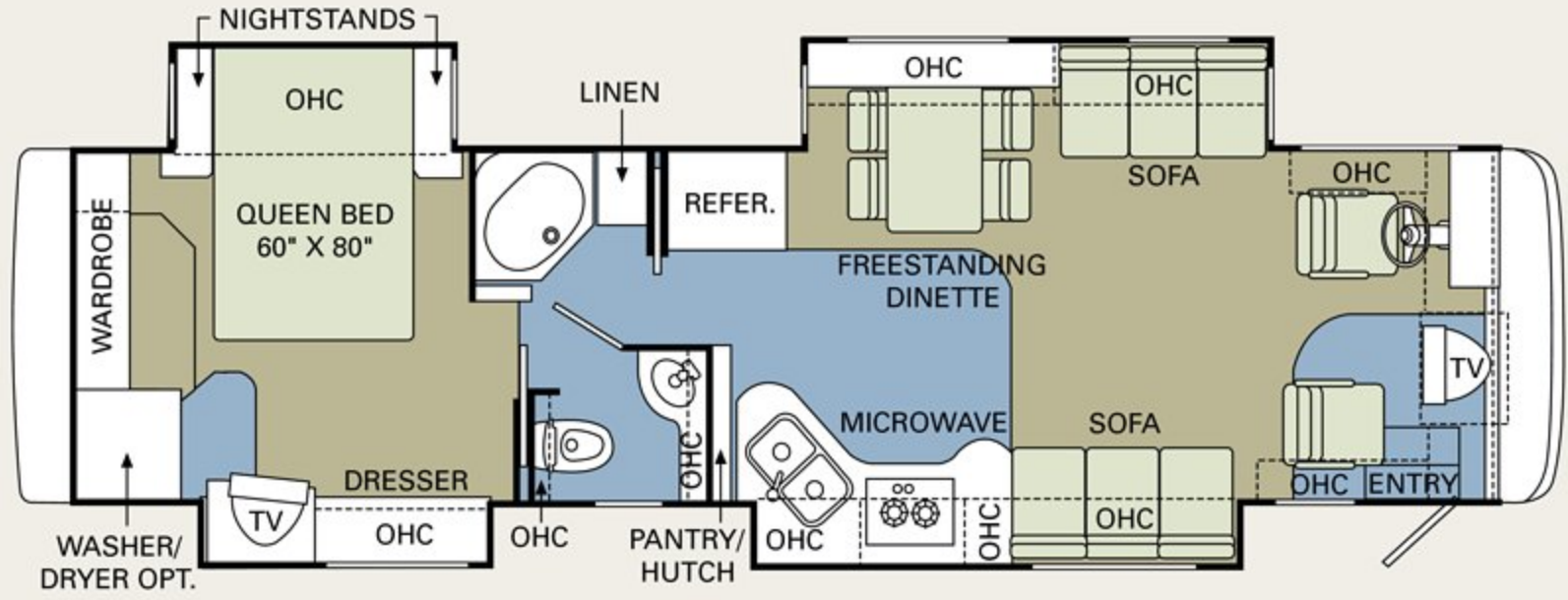


WE'VE GOT YOUR BACK.

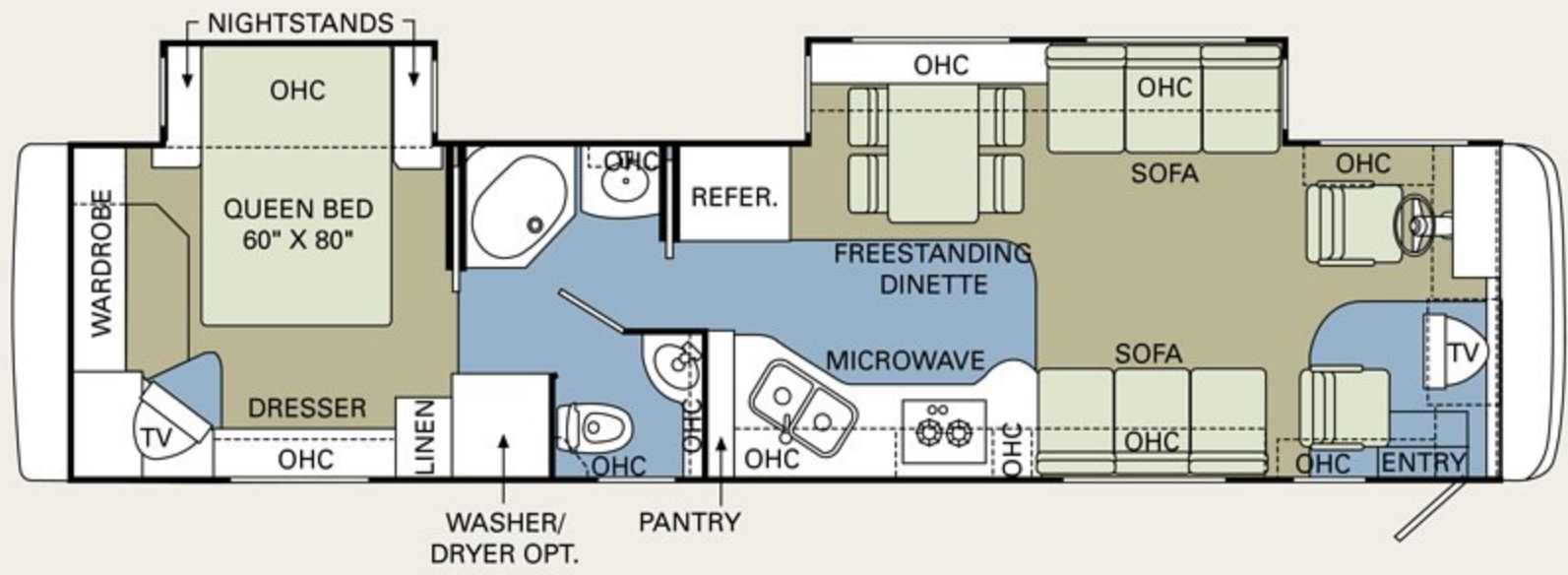
- Live customer support 24/7/365
- 350 Nationwide Service Centers
- Free first-year enrollment in our Owner Advantage Roadside Assistance Program
- Call 1-800-634-0855 or 1-800-650-7337 to arrange a tour of one of our state-of-the-art production facilities in Indiana or Oregon.



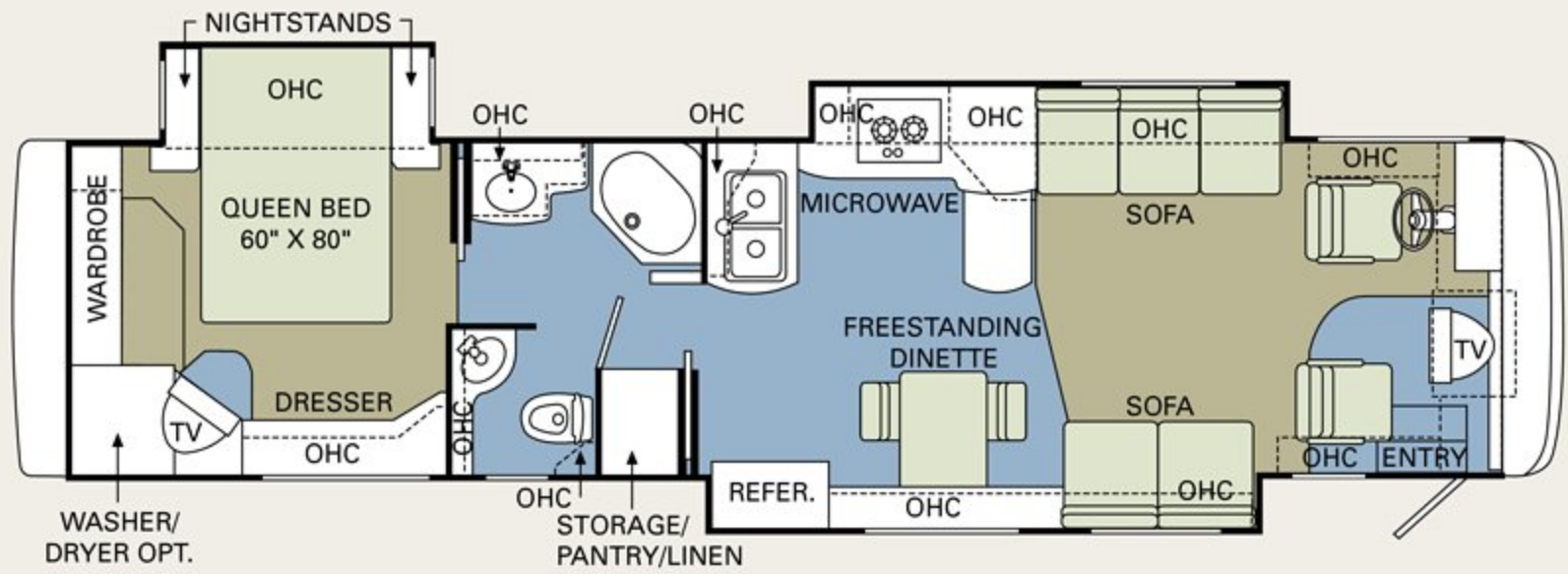
38PDQ



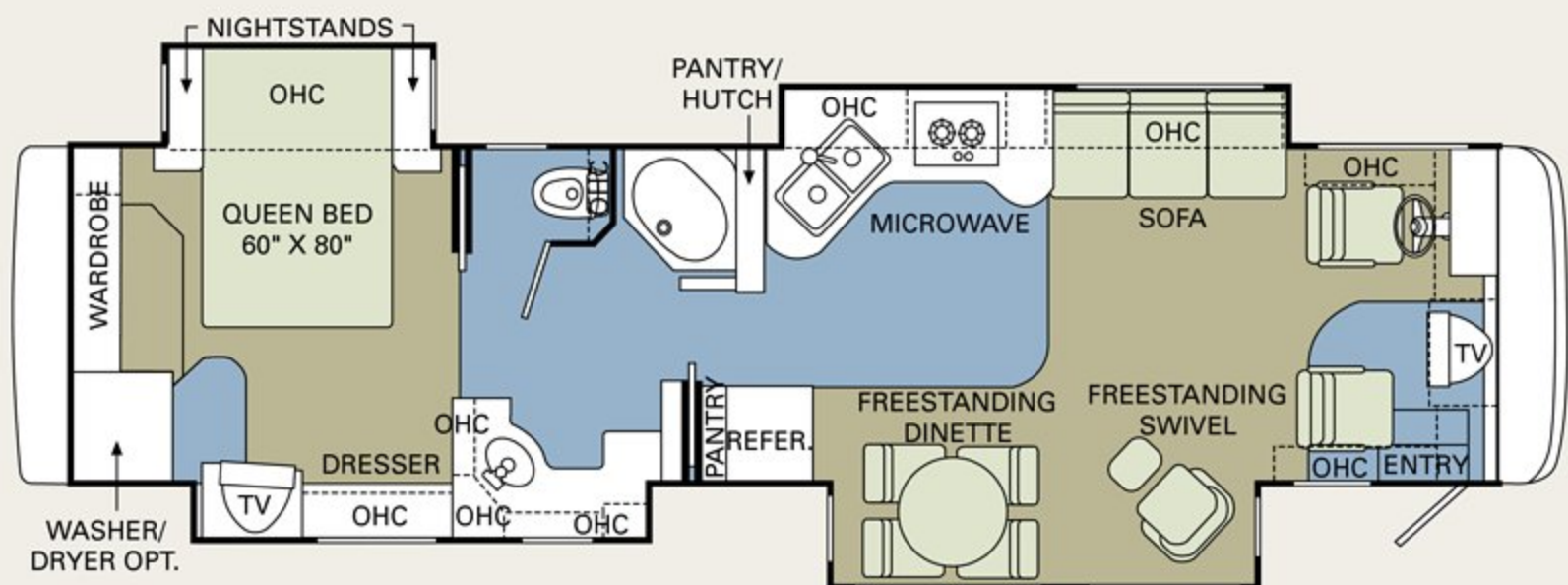
40PDD

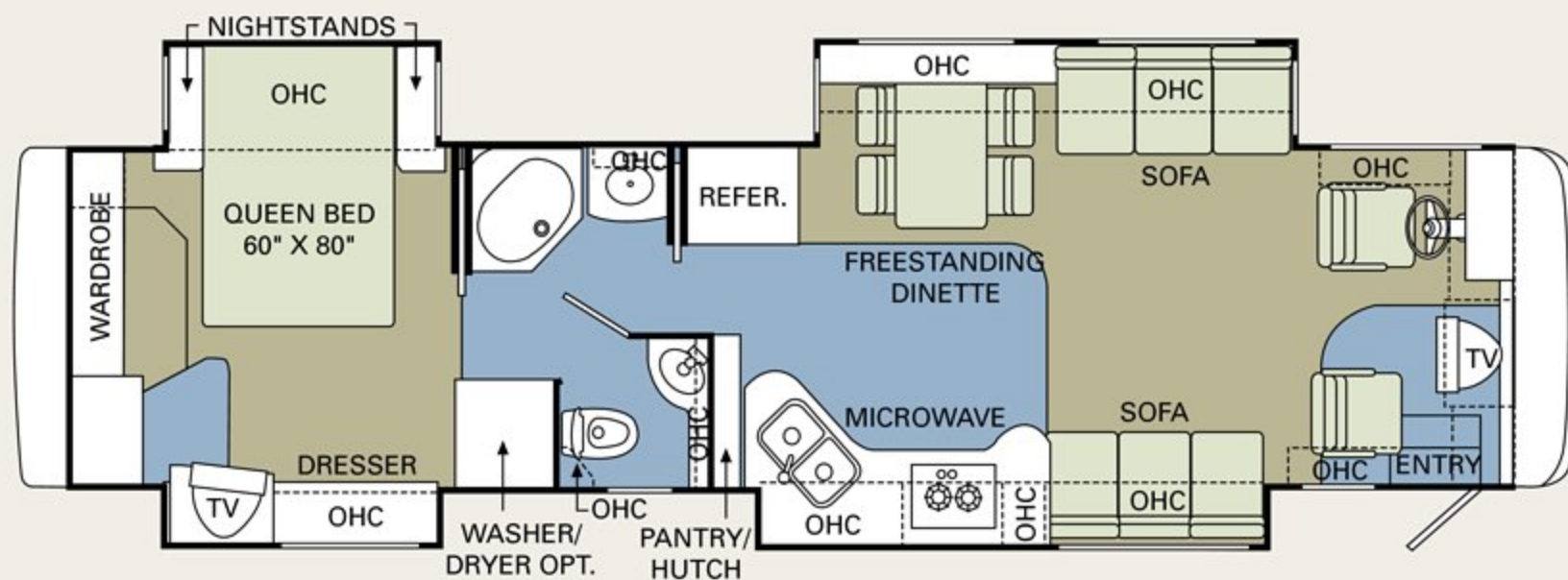


40PET

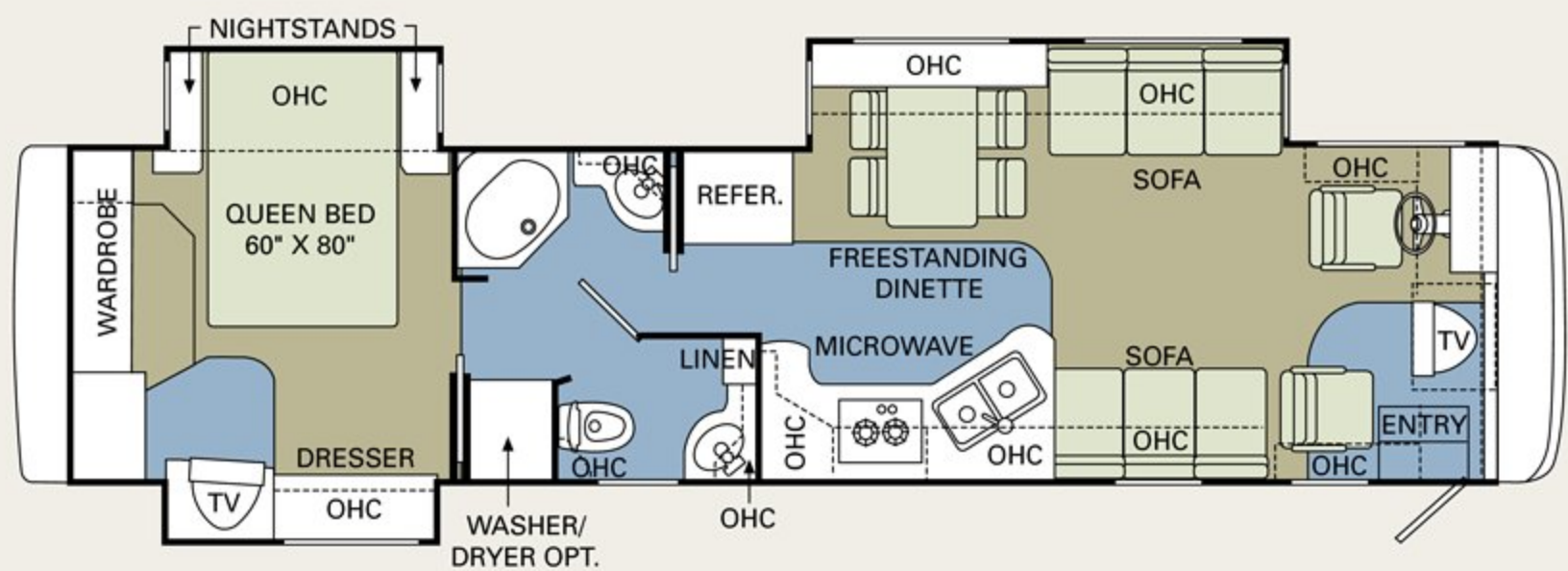


40PAQ

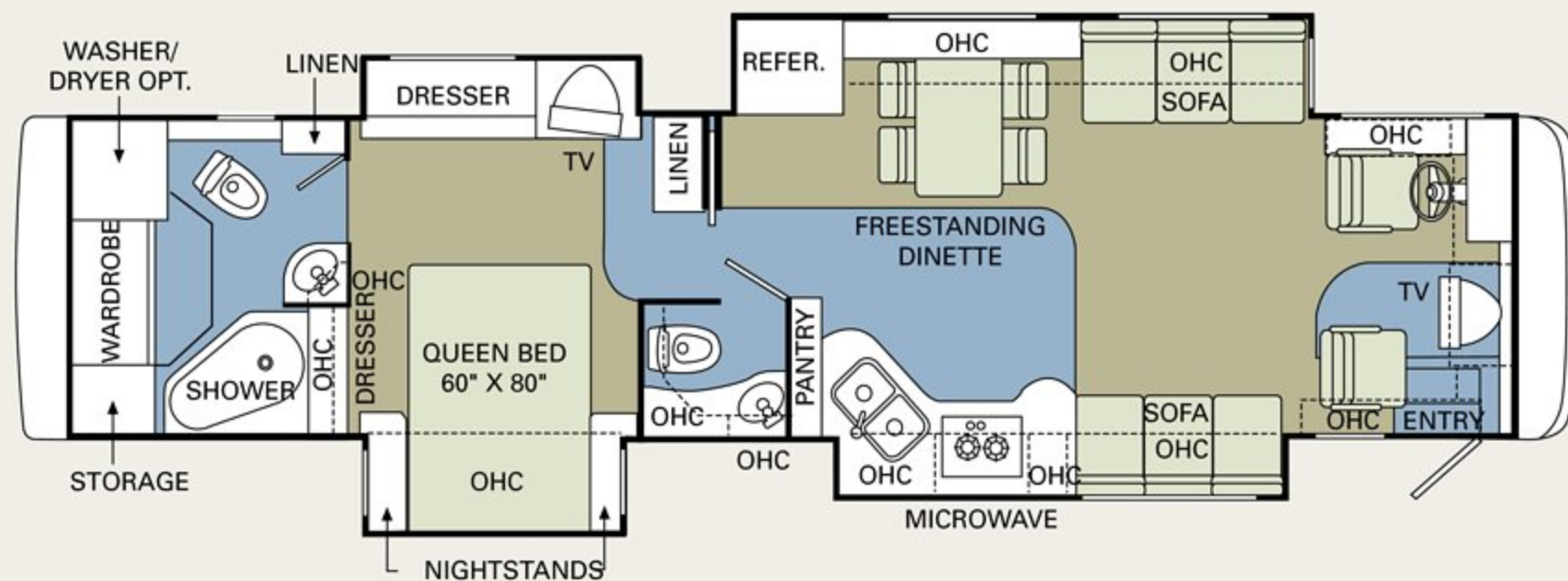




40PDQ



40PRT



42DSQ

20 SCEPTER® 06



Thank you for taking a closer look at the 2006 Scepter. In addition to the state-of-the-art technologies and creature comforts you'll see here, this luxury diesel coach includes countless conveniences and safety innovations you'll want to experience firsthand. Poke around. Kick the tires. Open and shut every door and drawer — twice. And most importantly, take a drive. You can count on our expert sales team to answer all your questions and demonstrate why this truly is the best experience the road has to offer.

WARRANTIES

12 MONTH/24,000 MILE basic limited warranty

5 YEAR/50,000 MILE limited warranty on aluminum or steel frame structure of sidewall, roof, front and rear cap

3 YEAR/36,000 MILE limited warranty on Roadmaster chassis

Applies to certain models. See owner's manual for complete details.

ALL EYES ON THE ROAD AHEAD.

If you're considering a Holiday Rambler, chances are you share our pioneer spirit. For us, it goes back to 1953, the year we introduced our first travel trailer. Since then, our countless innovations have helped create a rich, rewarding lifestyle — and a new way for families like yours to go exploring.

Yes, we're proud of our heritage — but we're not looking back. In these pages, you'll discover that we continue to lead the entire industry. With exciting new features, powerful chassis, remarkable floorplans and, as always, more ways of keeping you and your loved ones safe.

Whether you're looking for the value of a towable, the convenience and economy of a gas motorhome or the top-of-the-line luxury of a diesel coach — Holiday Rambler has an unbeatable model for your budget. Because in 2006, one thing's for sure. We're still paving the way.



HOLIDAY RAMBLER®

This is Living®

606 Nelson's Parkway Wakarusa, IN 46573

www.holidayrambler.com
(800) 245-4778


MONACO COACH CORPORATION

Monaco is traded on the New York Stock Exchange under the listing MNC.
© 2005, Monaco Coach Corporation 11/05 NPN:BROHSCE Litho in USA.

