

20
VACATIONER®
06



HOLIDAY RAMBLER®

This is Living®





THIS COACH HAS GOT YOUR NUMBER.

At Holiday Rambler, we know you have a taste for high-end luxury. And we also know you prefer the convenience of gas power. Lucky for you, we don't think you should have to sacrifice one to get the other. Meet the Vacationer. This stylish motorhome is loaded with standard features and is customizable with a wide range of impressive options. All to give you better driving experiences and a higher standard of living. Yes, this is the winning combination. All you need is the key. The 2006 Vacationer.

YES, WE LIVE TO REINVENT THE WHEEL.

Innovation. It's the challenge we've risen to for 53 years. And this year's no different. Take a closer look at the Vacationer, and you'll see some remarkable achievements. To begin with, it now features a full seven feet of ceiling height — for added spaciousness you'll notice immediately. You also have your choice of some extraordinary floorplans, including the 36DBD with a bath-and-a-half; the 37PCT with a bedroom desk and rear window; and the 37SBT, shown here, with large windows in the passage from the living area to the bedroom.



A



B



C

- A) The Vacationer is also big on craftsmanship, highlighted by our uniquely beautiful woodwork, including raised panel hardwood cabinet and refrigerator doors and decorative hardwood slide-out fascia. The kitchen also gleams with a contemporary radius solid surface countertop and distinctive edge detail.
- B) No matter which floorplan you choose, you'll find plenty of elbow room and storage space in the well-lighted bathroom. The one-piece fiberglass shower has a stylish glass enclosure with two handy towel bars.
- C) More big news this year is the 30-inch deep bedroom slide-out (not available on the 35SBD). It's just one more touch designed to enhance your quality of life on the road.

LET'S GET ROLLING.

Adventure's waiting, and the Vacationer will take you there in style. In the cockpit you'll enjoy the comfort of soft touch vinyl recliner seats (OptimaLeather™ on the Liz Claiborne decors), with six-way controls on the pilot's seat. The co-pilot has the convenience of a slide-out dash workstation, which is perfect for a laptop computer. Overhead are the cabinets that house the entertainment center, including the 24" flatscreen TV and the optional home theater system with surround sound speakers.



- A) Our side-hinged baggage doors are easier to open, increase your visibility and make it a snap to load and unload.
- B) An optional 3-camera rear vision system features two additional cameras mounted on the front cap to expand your view.
- C) To the right of the dash is the standard monitor for the rear vision system with audio and adjustable camera.





 **PANAVIEW™**

1-PIECE WINDSHIELD

- Say good-bye to the black rubber seam! Our exclusive Panaview™ 1-piece windshield provides the largest unobstructed view in the industry. Slender side pillars increase your peripheral vision, and the wipers are conveniently mounted below your field of view.



WHERE ALL THE DETAILS COME TOGETHER.

Holiday Rambler has long set the standard with warm, inviting interiors that feature a perfect harmony of fabrics, accents and carpeting. We've also led the way with stunning woodwork and superb craftsmanship, including raised panel hardwood cabinet doors, hardwood end panels, wood drawer boxes and heavy-duty ball bearing guides. Select the combination that suits you best to customize your Vacationer and make it distinctively your own.

- A. BEDSPREAD
- B. SOFA
- C. CORIAN®
- D. ACCENT
- E. CARPET



EXTERIOR COLORS/WOODS/FABRICS



BRUSHED NICKEL



SPANISH MOSS



VACATIONER HARDWARE

Our elegant cabinet hardware design features a satin nickel finish.



BETTER
STAIN
PROTECTION

Manufactured in, not added on. For added protection against stains, soil repellent is applied to virtually all upholstery fabric during the finishing process for superior coverage.*

*Brand and application of upholstery fabric protection may vary depending on date recreational vehicle was manufactured.



NEW VINTAGE OAK



CHAMPAGNE SELECT



NEWPORT CHERRY



BLACKWOOD MANOR II — featuring fabrics by Liz Claiborne



CANYON MOSAIC — featuring fabrics by Liz Claiborne



MESA PINE

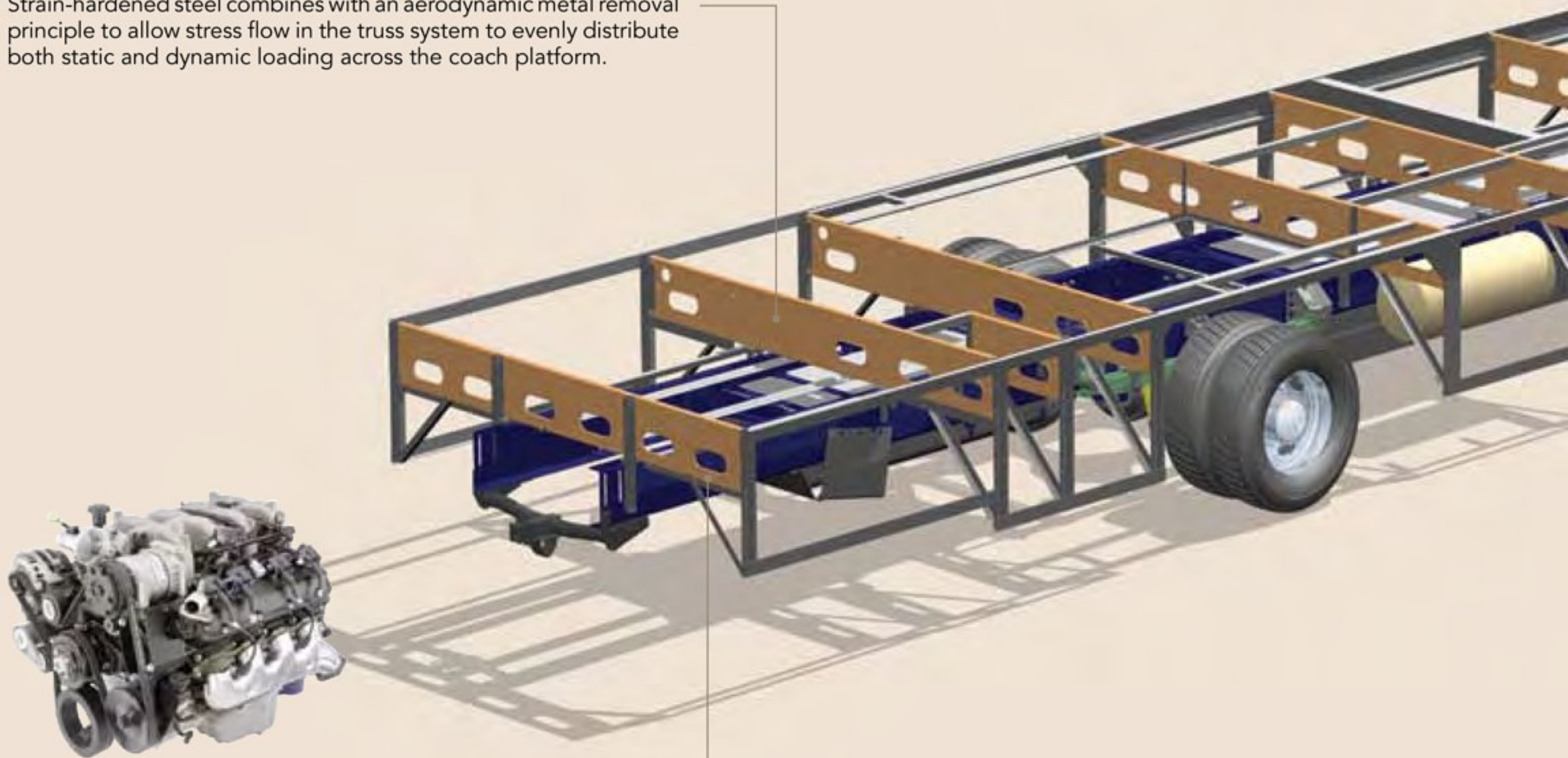


EXTERIOR COLORS/WOODS/FABRICS

SMARTSTRUCTURE II: STRONGER AND BETTER

The SmartStructure II truss system provides unbeatable chassis strength by maximizing the inherent strengths of its strain-hardened steel. For seamless performance, SmartStructure II is fully integrated with your choice of Ford or Workhorse chassis.

Strain-hardened steel combines with an aerodynamic metal removal principle to allow stress flow in the truss system to evenly distribute both static and dynamic loading across the coach platform.



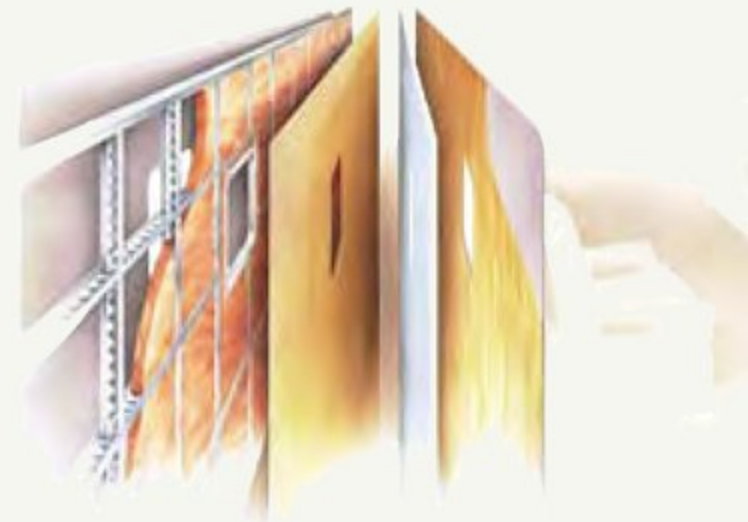
Shown here is the Workhorse chassis' Vortec™ 8100, 8.1L V8 engine. It features 340 HP and 455 lbs./ft. torque. The Ford chassis comes standard with a 6.8L 3-valve V-10 engine with 362 HP and 457 lbs./ft torque.

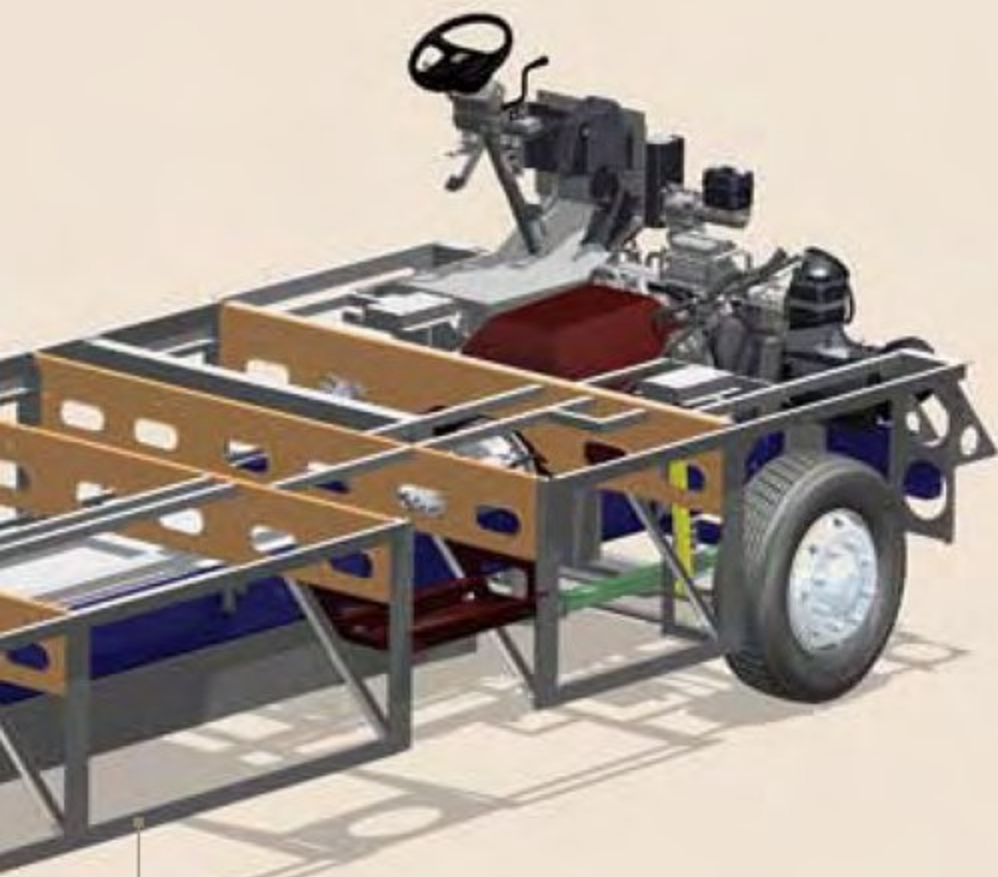
Integrity is stamped into the truss system, instead of relying on the welds of the tubular structure. This equates to 40% fewer welds, and, along with strategically located metal removal, reduces the overall chassis weight and provides for greater carrying capacity.



SLIDE-OUT CONSTRUCTION:

When you get a Holiday Rambler, you can be sure the slide-out boxes are some of the strongest and most reliable you'll find anywhere. They feature our exclusive multi-layer construction to give you maximum insulation and to reduce the chance of warping, twisting or shifting.





- 9-LAYER ROOF:** (top to bottom)
- One-piece peaked fiberglass roof
 - Luaun backing
 - Thick, tapered bead foam insulation
 - Aluminum double I-beam superstructure filled with fiberglass insulation
 - Vapor barrier
 - Structure foam: thermal insulative barrier
 - 1/2" bead foam insulation
 - Foam padding for extra insulation
 - Padded vinyl ceiling



The Vacationer features Holiday Rambler's exclusive Alumaframe® Superstructure. Our revolutionary system of aluminum C-Channel crossmembers runs the entire length of the unit, with double-welded intersections for added strength. This rigid design is both lighter and sturdier than wood or tubular aluminum frames — and much more reliable than butt-welded or screwed joint designs. From dirt roads to potholes, you can count on Alumaframe® to handle the relentless stresses of the road and provide superior structural integrity for many years to come.



Alumaframe®



Wood Aluminum (Butt-Welded) Alumaframe® (C-Channel)

- 5-LAYER EXTERIOR WALL:** (left to right)
- Smooth gel coat fiberglass is standard
 - Interlocking C-Channel filled with 1-1/2" fiberglass insulation bonded in place so it doesn't sag or leave spaces uninsulated
 - Vapor barrier
 - Bead foam adds comfort, saves energy and provides a thermal insulative barrier
 - Interior paneling



- 4-LAYER FLOOR:** (top to bottom)
- Structurwood™
 - Blue foam insulation
 - 1-1/2" aluminum tube
 - Three-ply poly underbelly

BODY CONSTRUCTION: FEATURES		OPTIONS
<ul style="list-style-type: none"> Alumaframe® Superstructure Steel Cage Cockpit Construction Peaked One-Piece Fiberglass Roof with Fiberglass Insulation Smooth Gel Coat Fiberglass Exterior Walls Front and Rear Molded Fiberglass Caps One-Piece Front Windshield Interior Height, 84" Aluminum Framed Floor on Steel Trusses Laminated Structurwood™ Flooring Interior Paneling with 3/4" Insulation Foam Insulated Floor Framing with Underbelly One-Piece Engine Cover Chrome Power Heated Remote Exterior Mirrors Headlamps with Turn Signals Fog Lights Low-Profile Sealed LED Marker Lights 	<ul style="list-style-type: none"> Taillights Wheel Mud Flap Integrated Metal Fuel Door with Lock 30" Deep Bedroom Slide-Out Houses (N/A: 35SBD) Pass-Through Storage Bays under Slide-Outs with Roto Cast Boxes Side-Hinged Baggage Doors; All Door Locations with Redesigned Extrusion and Latch Locations One-Piece Polyethylene Storage Compartment Added Exterior Storage above LP Tank Deluxe Full-Body Paint Rear Ladder Interior Rubber Entry Step with Built-In Stepwell Storage Bucket Exterior Triple Entry Steps Undercoating 	<ul style="list-style-type: none"> 3M Film Front Mask Full-Length Mud Flap Standard Run Savings Package: 3M Film Front Mask, Full-Length Mud Flap, 3-Camera Rear Vision System with Audio and Adjustable Center Camera, Large Double-Door Refrigerator with Ice Maker and Wood Panel Inserts 10 Cu. Ft., Washer/Dryer Prep (Requires 50 Amp Service Option), DVD Player (N/A with Home Theater Option), Pillow Top Mattress, Energy Management System with or without 50 Amp Service, 2,000 Watt Inverter with Two Additional Batteries, Fantastic 12V Attic Fan with Rain Sensor with Electronic Wall Thermostat in Bath, Eclipse Automatic Patio Awning Upgrade Standard Run Savings Package: Includes all Standard Run Savings Package Items Plus Large Four-Door Refrigerator with Ice Maker and Wood Panel Inserts
FORD CHASSIS/ENGINE/SUSPENSION (N/A: 37PCT, 37PST, 37SBT): FEATURES		
<ul style="list-style-type: none"> 6.8L 3-Valve V-10 Gasoline Engine with Electronic Fuel Injection Engine Displacement: 6.8 L/415 Cu. In. Power: 362 HP Torque: 457 lbs./ft. TorqShift 5-Speed Automatic Overdrive Transmission with Tow/Haul Mode New Transmission Oil Temperature Gauge 	<ul style="list-style-type: none"> Fuel Tank Capacity 75 Gallon 130 Amp Alternator Rear Axle Ratio: 5.38:1 Radial Tires: 235/80R 22.5G Polished Aluminum Wheels Leaf Spring Suspension Front and Rear Disc, 4-Wheel Anti-Lock Brakes 	<ul style="list-style-type: none"> Heavy-Duty Front Track Bar with Bilstein® Shock Absorbers Fully Automatic Hydraulic Leveling System Pre-Wire for Supplemental Braking System Hitch Receiver with Dual Connector (4-Pin or 7-Pin) SmartStructure II
WORKHORSE W-22 CHASSIS/ENGINE/SUSPENSION (N/A: 37PCT, 37PST, 37SBT): FEATURES		
<ul style="list-style-type: none"> 8.1L V-8 Gasoline Engine with Electronic Fuel Injection Engine Displacement: 8.1 L/496 Cu. In. Power: 340 HP Torque: 455 lbs./ft. 6-Speed Automatic Transmission with Overdrive Fuel Tank Capacity 75 Gallon 145 Amp Alternator 	<ul style="list-style-type: none"> Rear Axle Ratio: 5.86:1 Radial Tires: 235/80R 22.5G Leaf Spring Suspension ABS Brake System Stainless Steel Wheel Liners Fully Automatic Hydraulic Leveling System Pre-Wire for Supplemental Braking System Hitch Receiver with Dual Connector (4-Pin or 7-Pin) 	<ul style="list-style-type: none"> SmartStructure II
OPTIONS		
<ul style="list-style-type: none"> Workhorse 2006 Chassis Cost Adjustment (Required Option) 		
WORKHORSE W-24 CHASSIS/ENGINE/SUSPENSION OPTION (STD: 37SBT, 37PST)(REQUIRED OPTION 37PCT)(N/A: 35SBD): FEATURES		
<ul style="list-style-type: none"> 8.1L V-8 Gasoline Engine with Electronic Fuel Injection Engine Displacement: 8.1 L 496 Cu. In. Power: 340 HP Torque: 455 lbs./ft. 6-Speed Automatic Transmission with Overdrive Fuel Tank Capacity 75 Gallon 145 Amp Alternator 	<ul style="list-style-type: none"> Rear Axle Ratio 5.86:1 Radial Tires 235/80R 22.5G Leaf Spring Suspension ABS Brake System Polished Aluminum Wheels Fully Automatic Hydraulic Leveling System Pre-Wire for Supplemental Braking System 	<ul style="list-style-type: none"> Hitch Receiver with Dual Connector (4-Pin or 7-Pin) SmartStructure II
OPTIONS		
<ul style="list-style-type: none"> Workhorse W-24 Super Sport Chassis Package Workhorse 2006 Chassis Cost Adjustment (Required Option) 		
COCKPIT: FEATURES		OPTIONS
<ul style="list-style-type: none"> Fiberglass Automotive Dash with Burlwood Instrumentation Panel CD Player/Radio with Four Speakers Power Sunvisors Pilot and Co-Pilot Side Window Pull-Down Sunshades Rear Vision System with Audio and Adjustable Camera In-Dash Compass with Outside Temperature Intermittent Windshield Wipers Tilt Steering Wheel Cruise Control Power Steering Electric Automotive Horn 	<ul style="list-style-type: none"> Hardwood Center Console with Snack Tray Drawer on front of Workhorse Tray/Tip-Draw on front of Ford Tray New Style Soft Touch Vinyl Pilot and Co-Pilot Recliner Seats (N/A with Blackwood Manor II and Canyon Mosaic Decors by Liz Claiborne) New Style Distressed OptimaLeather™ Pilot and Co-Pilot Seats with Blackwood Manor II and Canyon Mosaic Decors by Liz Claiborne Six-Way Power Pilot Seat Carpeted Driver and Passenger Floor Mats Dash Workstation Wood Framed Cabinet Doors with Smoked Glass over Front Entertainment Center Systems Secure Front Cab over Televisions with Steel Framing 	<ul style="list-style-type: none"> Six-Way Power Co-Pilot Seat OptimaLeather™ Pilot and Co-Pilot Seats (N/A with Blackwood Manor II and Canyon Mosaic Decors by Liz Claiborne) 3-Camera Rear Vision System with Audio and Adjustable Center Camera CB Radio Prep Air Horns Roof-Mounted with Switch Driver's Side Door with Power Window

APPLIANCES AND ACCESSORIES: FEATURES	OPTIONS
<ul style="list-style-type: none"> • Large Double-Door Refrigerator with Ice Maker and Hardwood Raised Panel Doors • New Style Recessed High-Output Two-Burner Cooktop with Sealed Burners and Flush-Mount Cover • Removable Solid Surface Range Covers • Spacesaver Convection Microwave with Touch Control • 24" Flatscreen Stereo Color TV with Remote Control in Cockpit Overhead • 20" Flatscreen Color TV with Remote Control in Bedroom • Bedroom Radio with Single Disc CD Player with Two Ceiling Speakers • TV Antenna • DVD Prep and Video Control Box with Booster • Exterior Hook-Ups for DSS Dish and Cable • Interior Cable TV Hook-Up and Telephone Jacks • Digital Satellite System Prep • Exterior Gas Line Hook-Up Prep for LP Accessories 	<ul style="list-style-type: none"> • Large Double-Door Refrigerator with Ice Maker and Hardwood Raised Panel Doors 10 Cu. Ft. • Large Four-Door Refrigerator with Ice Maker and Hardwood Raised Panel Doors (N/A with Pantry) • High-Output Three-Burner Range with Oven • Washer/Dryer Prep (Requires 50 Amp Service Option) • Combination Washer/Dryer (Requires Washer/Dryer Prep Option) • DVD Player (N/A with Home Theater Option) • Home Theater System with DVD/VCR Player with Surround Sound Speakers • Exterior Entertainment Center, CD Player and Radio with Two Speakers

INTERIOR: FEATURES	OPTIONS
<ul style="list-style-type: none"> • New Vintage Oak Cabinetry • Raised Panel Hardwood Cabinet Doors • Hardwood Cabinet End Panels in Living Area • Hardwood Raised Panel Doors on Refrigerator • Wallpaper Border to Bath Wall and Bedroom • Self-Supporting Top-Hinged Overhead Storage Doors and Positive Catches on All Other Doors • Heavy-Duty Ball Bearing Drawer Guides • Wood Cabinet Drawer Boxes • Wood Interior Grab Handle on Cabinet at Entry Door • Satin Finished Entry Rail for Stepwell (N/A with Computer Desk Selection 37PBD) • Satin Nickel Cabinetry Hardware and Bath Accessories • Solid Surface Radius Profile Kitchen Countertop with Under-Mounted Plexus Stone Sink with Two Sink Covers • Toe Kicks with Rope Lighting in Kitchen and Bath Base Cabinets • Solid Surface Bath Lavatory Countertop with Integrated Bowl • Dinette Countertops Laminated with Wood Edge • All Other Countertops Hardwood, except Kitchen, Dinette and Bath Lavatory • Kitchen Overhead Cabinets with Adjustable Shelf • Kitchen Pantry next to Refrigerator with Roll-Out Storage in Upper Cabinet and Three Drawers Below (N/A with Four-Door Refrigerator Option) • Removable Silverware Tray, Kitchen Base Cabinets (N/A with Range Option) • Trash Can inside Kitchen Base Cabinet • Kitchen: Solid Surface Accent behind Stove Area • Laminate Tile Flooring in Kitchen, Bath and Entryway • Textured Style Nylon Carpeting with Pad in Living Area and Bedroom • Soft Touch Padded Vinyl Ceiling • Hardwood Slide-Out Fascia Design with Fluted Accents • Living Area or Bedroom: Beveled Edge Mirror with Beveled V-Grooves, Wainscoting Accent under Mirrors Living Area Location (N/A: 37SBT) • Hutch with Glass Doors/Back-Lit Glass Door (37PCT, 37SBT) • Hardwood Raised Panel Bathroom Doors • Wood Trim for Bath Door Opening Hallway Side • Wood Louvers on Washer and Dryer Doors • French Style Door into Bedroom (37PCT) • Magazine Rack Bathroom (N/A: 35SBD, 37PBD) • Wood Grain Crown Molding in Bedroom and Living Area on All Open Walls • Medicine Cabinet with Shelves • Bathroom Lavatory Base Wall Mirror with Wood Frame (N/A: 36DBD, 37SBT, 37PST) • Shadow Box with Mirror on Rear Bedroom Wall with Accent Lights in Header and Outlet; Wainscoting Accent under Shadow Box (Mirror N/A with Rear Window Option) (35SBD, 37PST) • Rear Wardrobe Closet with Deluxe Mirror Door Frames Satin Finish (37SBT) • Side Wardrobe Closet with Deluxe Mirror Door Frames Satin Nickel Finish (37PBD) • Bedroom Swing-Away TV Cabinets • Bedspread with Three Decorative Pillows • Wood Headboard with Fabric Insert • Pleated Day/Night Blackout Shades in Living Area and Bedroom • Mini Blinds in Kitchen and Bathroom • Soil Repellant on Fabric 	<ul style="list-style-type: none"> • Decors: Brushed Nickel, Mesa Pine, Spanish Moss, Blackwood Manor II — Liz Claiborne, Canyon Mosaic — Liz Claiborne • Wood Choices: Newport Cherry, Champagne Select

FURNITURE: FEATURES	OPTIONS	
<ul style="list-style-type: none"> • Queen Bed with Nightstands • Party Table behind Co-Pilot Seat (N/A: 37PBD) • Arched Back Wood Booth Dinette with Side-Sliding Table Top and 30" Drawer (N/A: 37SBT, 37PST) • Forward-Facing Seat Belts in Booth Dinette inside Living Area Slide-Out (N/A: 37SBT, 37PST) • New Style Fabric Hide-A-Bed Sofa with Three Pillows • New Style Fabric Swivel Glider Barrel Chair • New Style Fabric Swivel Glider Barrel Chair and Desk Chair Bedroom (37PCT) 	<ul style="list-style-type: none"> • Pillow Top Mattress • New Style Fabric Hide-A-Bed Sofa with Air Mattress and Three Pillows • New Style OptimaLeather™ Hide-A-Bed Sofa with Air Mattress and Three Pillows • Curbside New Style OptimaLeather™ J-Lounge in Place of Swivel Glider Barrel Chair and Computer Desk (37PBD) • New Style OptimaLeather™ Swivel Recliner Chair in Place of Fabric Swivel Glider Barrel Chair • New Style OptimaLeather™ Euro-Recliner Chair with Ottoman in Place of Swivel Glider Barrel Chair 	<ul style="list-style-type: none"> • Two New Style Curbside OptimaLeather™ Euro-Recliners with Ottomans in Place of Swivel Glider Barrel Chair and Computer Desk (37PBD) • Bedroom Desk (35SBD, 36DBD) • Fabric Swivel Barrel Chair with Center Lift-Up Table in Place of Desk and Desk Chair Bedroom (37PCT) • Freestanding Dinette with Wall Cabinet, Two Freestanding Chairs and Two Folding Chairs (Required Option: 37SBT, 37PST)

ELECTRICAL SYSTEMS AND LIGHTS: FEATURES		OPTIONS
<ul style="list-style-type: none"> • 30 Amp 120V Distribution Panel and Power Cord • 55 Amp Electronic 12V Power Converter • Onan® 5.5 kW Gas Generator • Two 6V House Batteries • Battery Disconnect Switches • 12V and 110V Outlet in Cockpit Area • Porch Light and Exterior Step Light on Same Switch • Exterior Power Entry Step with Light • Interior Stepwell Entry Step Lights • Water Pump Switch in Service Bay Area and Convenience Center • Lights in Outside Storage Compartments • 120V Receptacles in Outside Storage Compartment • Underhood Utility Light • Receptacle and Phone Jack in Dinette Area • Directional Map Lights Pilot and Co-Pilot Seats 	<ul style="list-style-type: none"> • Redesigned Convenience Center in Hallway • Storage Compartment Tank Monitor Gauge • Fluorescent Lights under Kitchen Overhead • Fluorescent Ceiling Lights Throughout • Fluorescent Ceiling Lights inside Living Area Slide-Out House • Rope Lighting under Toe Kicks in Kitchen and Bath Lavatory • Decorative Wood Framed Galley Ceiling Fluorescent Light with Skylight and Shade • Satin Nickel Decorative Lighting Living Room Wall Light, New Style Dinette Ceiling Light, Bedroom Cosmetic and Bath Vanity Light • Halogen Lights under Living Room Overhead Cabinets • Bullet Lights over Bed Satin Finish with His and Hers Switches above Nightstands • Wardrobe Closet Lights 	<ul style="list-style-type: none"> • Energy Management System with or without 50 Amp Service • 50 Amp 120V Distribution Panel and Cord • 140 Watt Inverter (N/A with 2,000 Watt Inverter) • 2,000 Watt Inverter with Two Additional Batteries
PLUMBING AND LP SYSTEMS: FEATURES		OPTIONS
<ul style="list-style-type: none"> • Kitchen Composite Under-Mounted Sink with Single Lever Satin Nickel Faucet with Pullout Sprayer • Separate Satin Nickel Finish Faucet for Filtered Water • Bath Lavatory Faucet Single Handle Satin Finish • Demand Water System and Water Pump • 10 Gallon LP Gas/Electric Water Heater with Electronic Ignition, DSI • Winterization Valving System • Water Heater Bypass Valve • Style Plus Porcelain Toilet with Sprayer • No-Fuss Flush Holding Tank Rinsing System • Insulated Systems Compartment with Easy Access to Hook-Up 	<ul style="list-style-type: none"> • New Style Shower inside Wet Bay with Hot/Cold Water • Soap Dispenser inside Utility Bay • Gravity and Pressurized Water Fill • Contained Storage Area for Sewer Hose • One-Piece Fiberglass Shower • New Style Shower Diverter, Hose and Head, Satin Finish with Satin Slide Bar for Shower Head with Soap Dish • New Style Shower Light on Wall inside Shower Area • Satin Nickel Shower Door Frame with Obscure Glass • Chrome Shampoo/Conditioner/Soap Dispenser in Shower 	<ul style="list-style-type: none"> • RV Sani-Con 2 System Holding Tank Flush System • Bathtub in Place of Shower
HEATING, VENTS AND AIR CONDITIONING: FEATURES		OPTIONS
<ul style="list-style-type: none"> • One 13.5M BTU and One 11.0M BTU Air Conditioner with Ducted Air and Wall Digital Thermostat • Electronic Ignition Furnace 35M BTU (37SBT, 37PST — One Front 21M BTU, One Rear 20M BTU) • Electronic Dash AC/Heat Climate Control System • In-Floor Ducted Heating System with Metal Floor Registers 	<ul style="list-style-type: none"> • Kitchen Powered Attic Fan with Wall Control of Automatic Dome and Fan Power • Bath Powered Attic Fan with Wall Control of Automatic Dome and Fan Power • 12V Heater in Wet Bay • Wood Louver Furnace Air Return in Kitchen (37PST, 37SBT) • Satin Nickel Finish Metal Air Return Grill for Furnace (Rear Furnace Location on 37SBT and 37PST) • Metal Floor Registers Satin Nickel 	<ul style="list-style-type: none"> • Dual 13.5M BTU Air Conditioner, Requires 50 Amp Service New Option 35SBD • Dual 13.5M BTU Air Conditioner with Heat Pumps, Requires 50 Amp Service New Option 35SBD • Fantastic 12V Attic Fan with Rain Sensor with Electronic Wall Thermostat Kitchen • Fantastic 12V Attic Fan with Rain Sensor with Electronic Wall Thermostat in Bath
WINDOWS, DOORS AND AWNINGS: FEATURES		OPTIONS
<ul style="list-style-type: none"> • Radius Flush-Mount Dual Pane Safety Glass Dark Tinted Slider Windows • Bathroom Window (N/A: 35SBD, 37PBD) • Rear Wall Bedroom Window (37PBD, 37PCT) • Radius Entrance Door with Clear Glass, Roller Shade, Screen Door and Anti-Skid Steps • Two Interior Grab Handles and One Exterior Grab Handle 	<ul style="list-style-type: none"> • Acrylic Patio Awning with Metal Cover • Topper Slide-Out Awnings Living Area and Bedroom • Protecta Glaze Tinted Plexiglas® Skylight in Bathroom • Protecta Glaze Tinted Plexiglas® Skylight in Kitchen with Pleated Shade 	<ul style="list-style-type: none"> • Eclipse Automatic Patio Awning • Window Awnings Living Area Slide-Out House Windows • Rear Bedroom Window (35SBD, 37PST) • Bedroom Skylight 30" x 30" with Shade (37PCT) • Sidewall Window Awning Bedroom (N/A: 37PBD, 37PCT)
SAFETY: FEATURES		
<ul style="list-style-type: none"> • Fire Extinguisher • Deadbolt Lock on Entrance Door • 120V GFI Protected Circuit, Kitchen, Bath and Exterior 	<ul style="list-style-type: none"> • LP Gas Detector • Smoke Detector • Carbon Monoxide Detector • Pilot and Co-Pilot Three-Point Seat Belts 	<ul style="list-style-type: none"> • Third Brake Safety Light • Egress Windows

Due to the large variety of options and floorplan arrangements available to our customers, actual weights for each unit can differ significantly. Holiday Rambler provides a weight sticker on each unit we produce which includes that unit's tank capacities and approximate weight. Consult your local Holiday Rambler dealer for unit availability and further information.

The information printed in this brochure reflects product design, fabrication, and component parts at the date of printing. The manufacturer reserves the right, at any time, to make changes in product design or material or component specifications as its sole option, without notice. This includes the substitution of components of a different brand or trade name, which will result in comparable performance. All information printed in this brochure is subject to change after the date of printing. Some features shown or mentioned in this brochure are optional and may only be available in selected floorplans. Photographs may show props or decorations that are not standard equipment on Holiday Rambler models. Holiday Rambler, the HR logo and its design, are registered trademarks. All other products and company names are trademarks and/or registered trademarks of their respective holders.

While the color of the motorhome's exterior and the interior fabrics depicted in this sales brochure are fair and reasonable depictions, the colors depicted may not be an exact match of the actual colors because of the variances in photo-processing and variances caused by inserting the photographs within the sales brochure. Due to product improvements, changes during the model year and/or transcription errors that may occur, information represented within this brochure may not be accurate at the time of your purchase. If certain information is significant to your purchasing decision, please confirm the information with your dealer prior to submitting your order.

The actual overall length of the recreational vehicle may differ from that indicated in the brochure due to variances in the manufacturing process and/or installed components. The actual length may be greater or less than that indicated.

Component part and appliance manufacturers issue limited warranties covering those portions of the recreational vehicle not covered by the Limited Warranties issued by Monaco Coach Corporation. To learn which specific component parts and appliances are excluded from the Limited Warranties issued by Monaco Coach Corporation, please contact your selling dealership or Monaco Coach Corporation directly, or review the warranty packet inside the recreational vehicle.

Weights Ford Chassis	35SBD	36DBD	37PBD	37PCT	37SBT	37PST
Gross Vehicle Weight Rating (Lbs.)	22,000	22,000	22,000	N/A	N/A	N/A
Gross Combined Weight Rating (Lbs.)*	26,000	26,000	26,000	N/A	N/A	N/A
Gross Axle Weight Rating (Front) (Lbs.)	7,500	7,500	7,500	N/A	N/A	N/A
Gross Axle Weight Rating (Rear) (Lbs.)	14,500	14,500	14,500	N/A	N/A	N/A
Weights Workhorse Chassis W-22						
Gross Vehicle Weight Rating (Lbs.)	22,000	22,000	22,000	N/A	N/A	N/A
Gross Combined Weight Rating (Lbs.)*	26,000	26,000	26,000	N/A	N/A	N/A
Gross Axle Weight Rating (Front) (Lbs.)	8,000	8,000	8,000	N/A	N/A	N/A
Gross Axle Weight Rating (Rear) (Lbs.)	14,500	14,500	14,500	N/A	N/A	N/A
Weights Workhorse Chassis W-24						
Gross Vehicle Weight Rating (Lbs.)	N/A	24,000	24,000	24,000	24,000	24,000
Gross Combined Weight Rating (Lbs.)*	N/A	30,000	30,000	30,000	30,000	30,000
Gross Axle Weight Rating (Front) (Lbs.)	N/A	9,000	9,000	9,000	9,000	9,000
Gross Axle Weight Rating (Rear) (Lbs.)	N/A	15,500	15,500	15,500	15,500	15,500
Measurements						
Wheelbase	228"	242"	242"	242"	242"	242"
Overall Length	35' 11"	36' 9"	37' 5"	37' 11"	37' 11"	37' 5"
Overall Height with A/C, Ford	12' 5"	12' 5"	12' 5"	12' 5"	12' 5"	12' 5"
Overall Height with A/C, Workhorse	12' 6"	12' 6"	12' 6"	12' 6"	12' 6"	12' 6"
Interior Height	7' 0"	7' 0"	7' 0"	7' 0"	7' 0"	7' 0"
Interior Width	94.5"	94.5"	94.5"	94.5"	94.5"	94.5"
Exterior Width	100.5"	100.5"	100.5"	100.5"	100.5"	100.5"
Tank Capacity**						
Water Heater (Gal.)	10	10	10	10	10	10
Gray Tank (Gal.)	40	42/39	42	45	45	42
Black Tank (Gal.)	42	42/39	42	54	45	42
Fresh Tank (Gal.)	60	60	70	60	60	70
LP Tank (Gal.)***	24	24	24	24	24	24

* Towing capacity is limited by GCWR; your vehicle's towing capacity is the difference between the GCWR and the actual vehicle weight, including all water, fuel, passengers and cargo. Your towed vehicle should be equipped with auxiliary brakes if the weight of the towed vehicle exceeds 1,000 lbs. Consult your owner's manual for further towing information.

** Variances in the fabrication and installation of the tanks may cause the actual "usable capacity" to be greater or less than the capacities designated above.

*** Actual filled LP capacity is 80% of listing due to safety shut-off required on tank.

AT HOLIDAYRAMBLER.COM, WE'RE ALWAYS OPEN.

Visit our website anytime day or night to check out the latest product news and updates. You can also take a factory tour, find a dealer near you, get information on club events and much more. It's also an easy way to contact us via e-mail.

www.holidayrambler.com

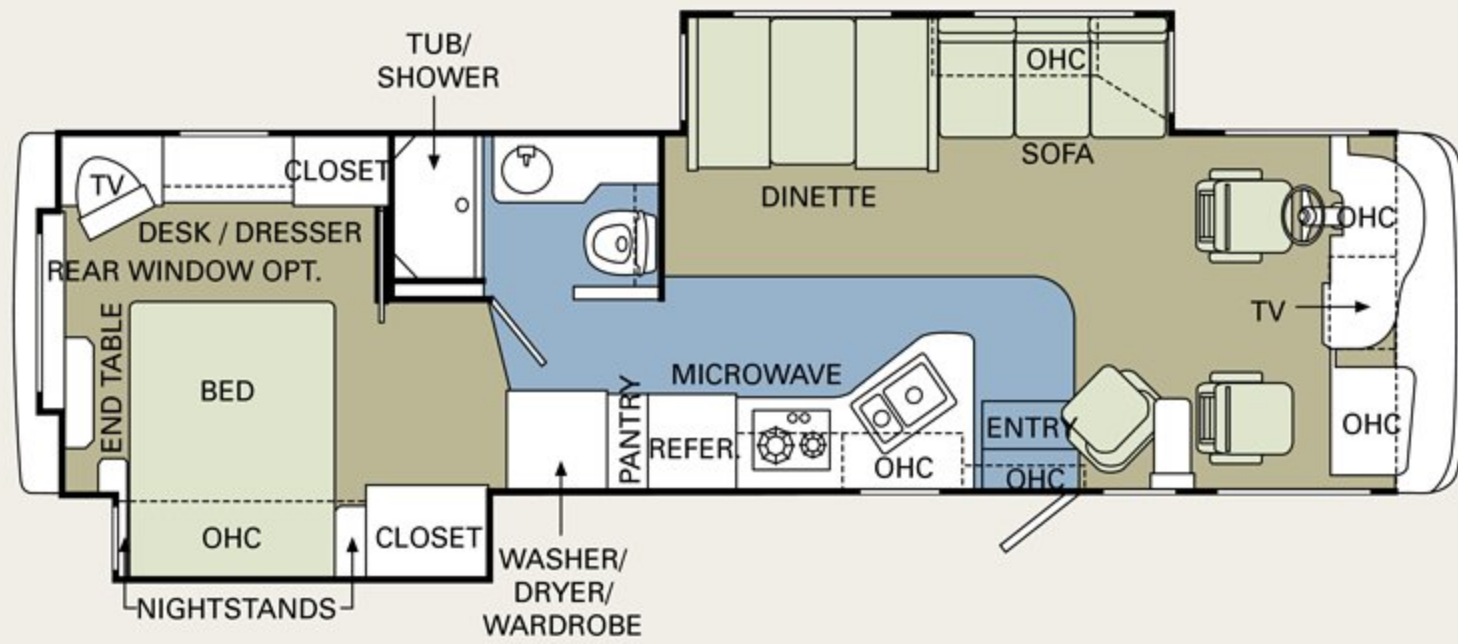


WE'VE GOT YOUR BACK.

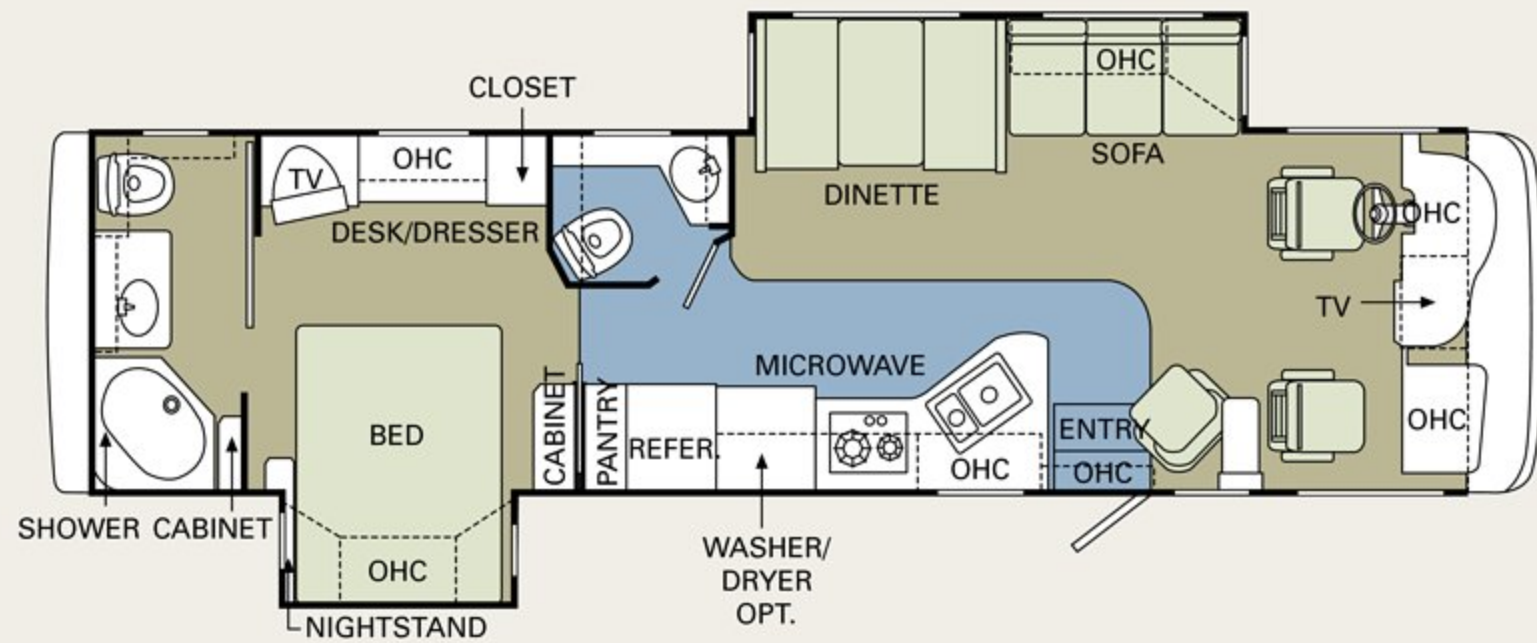
- Live customer support 24/7/365
- 350 Nationwide Service Centers
- Free first-year enrollment in our Owner Advantage Roadside Assistance Program
- Call 1-800-634-0855 or 1-800-650-7337 to arrange a tour of one of our state-of-the-art production facilities in Indiana or Oregon.



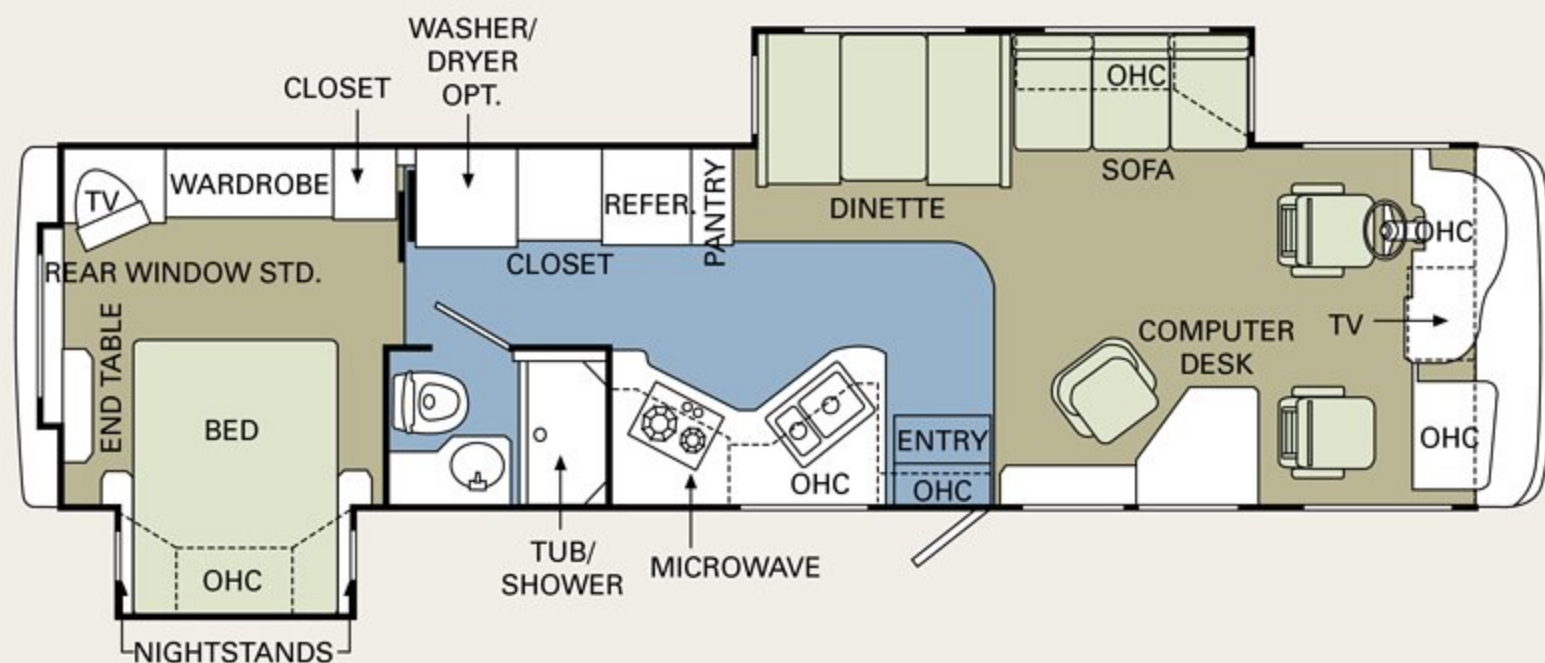
35SBD



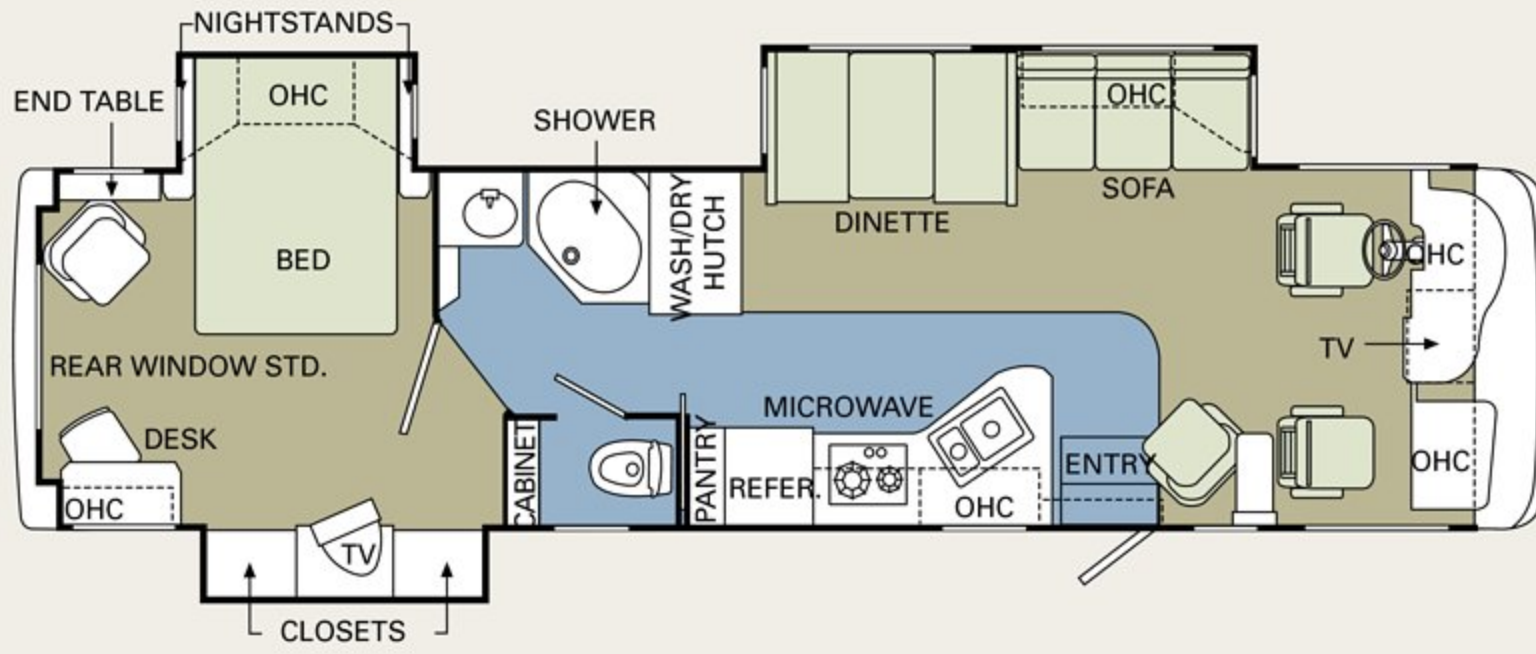
36DBD



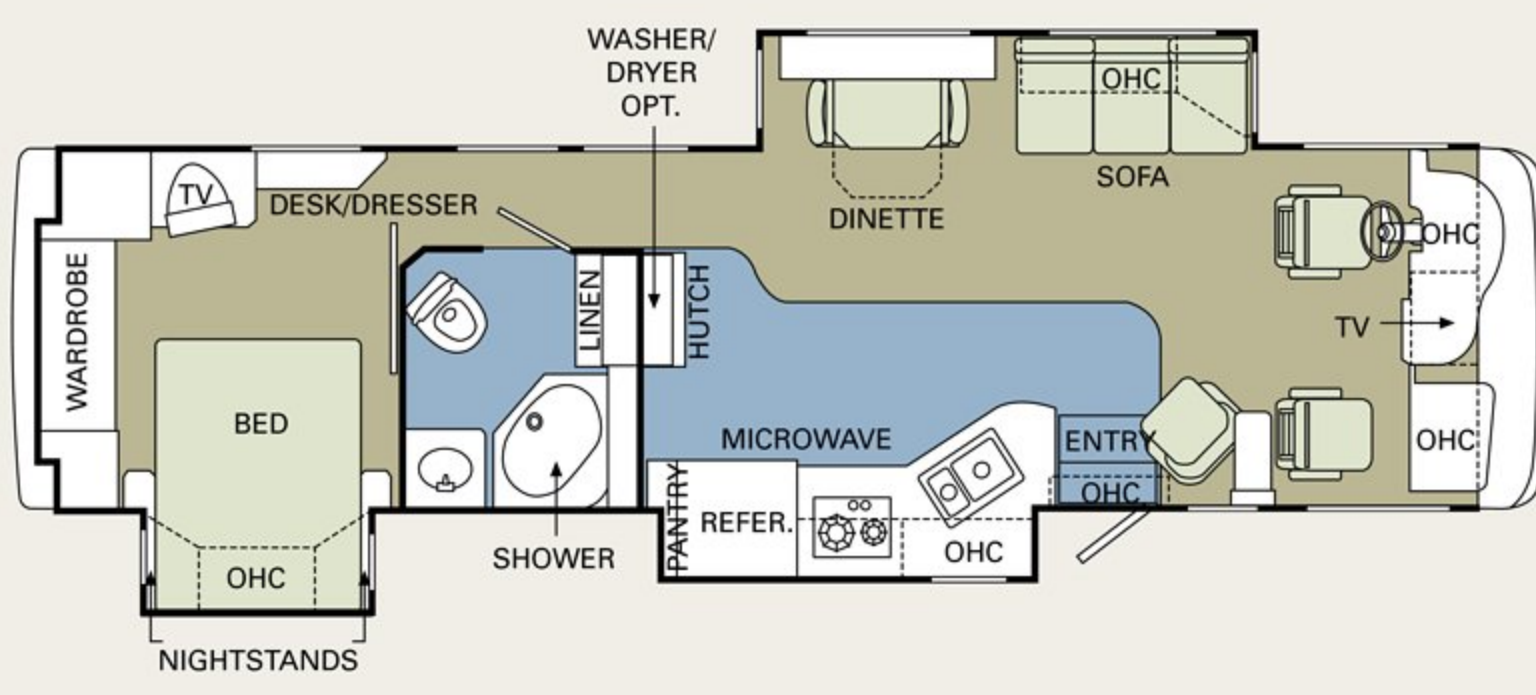
37PBD



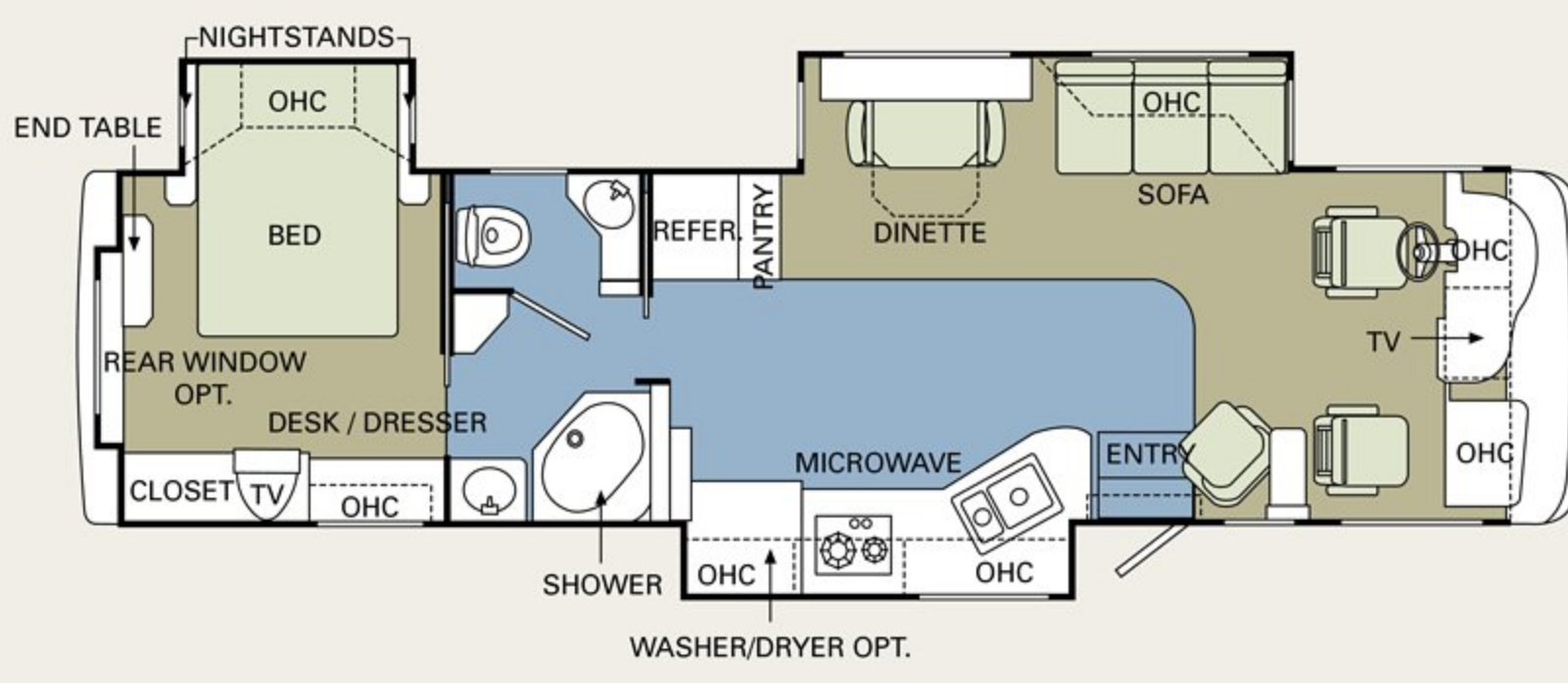
CARPET | TILE



37PCT



37SBT



37PST

20 VACATIONER® 06



Thank you for taking a closer look at the 2006 Vacationer. In addition to its many creature comforts, this value-packed gas coach includes countless conveniences and safety innovations you'll want to experience firsthand. Poke around. Kick the tires. Open and shut every door and drawer — twice. And most importantly, take a drive. You can count on our expert sales team to answer all your questions and demonstrate why this truly is the best experience the road has to offer.

WARRANTIES

12 MONTH/24,000 MILE basic limited warranty

5 YEAR/50,000 MILE limited warranty on aluminum or steel frame structure of sidewall, roof, front and rear cap

3 YEAR/36,000 MILE limited warranty on Ford and Workhorse chassis

Applies to certain models. See owner's manual for complete details.

ALL EYES ON THE ROAD AHEAD.

If you're considering a Holiday Rambler, chances are you share our pioneer spirit. For us, it goes back to 1953, the year we introduced our first travel trailer. Since then, our countless innovations have helped create a rich, rewarding lifestyle — and a new way for families like yours to go exploring.

Yes, we're proud of our heritage — but we're not looking back. In these pages, you'll discover that we continue to lead the entire industry. With exciting new features, powerful chassis, remarkable floorplans and, as always, more ways of keeping you and your loved ones safe.

Whether you're looking for the value of a towable, the convenience and economy of a gas motorhome or the top-of-the-line luxury of a diesel coach — Holiday Rambler has an unbeatable model for your budget. Because in 2006, one thing's for sure. We're still paving the way.



HOLIDAY RAMBLER®

This is Living®

606 Nelson's Parkway Wakarusa, IN 46573

www.holidayrambler.com
(800) 245-4778




MONACO COACH CORPORATION

Monaco is traded on the New York Stock Exchange under the listing MNC.
© 2005, Monaco Coach Corporation 11/05 NPN:BROHVAC Litho in USA.

