



MONACO

DRIVING YOUR DREAM.

2006 DIPLOMAT®





MONACO®

DRIVING YOUR DREAM.

2006 DIPLOMAT®



**MORE SPACE. MORE POWER.  
AND YES, MORE BELLS AND WHISTLES.**

Welcome aboard the 2006 Diplomat! Year after year, this tremendous diesel value is one of the most popular coaches on the road. And the excitement continues with this latest edition. You'll be greeted by a full seven feet of ceiling height — taking spaciousness to new levels. Add to that the standard 400 HP Cummins® engine and the impressive features of the new optional Standard Run Savings Package, and you have a coach that far outshines anything in its class.

You'll know at once you've entered a Monaco coach, thanks to the impeccable decor and craftsmanship. The stunning woodwork features raised panel hardwood cabinet doors, hardwood end panels and crown molding. And throughout the coach, the cabinetry is outfitted with stylish satin nickel hardware.

Comfort and convenience reign in the dining area, with our legless solid surface table, two stylish chairs and two folding chairs. In the remarkable new 40PAQ floorplan, the spacious dinette is highlighted by four tall windows and a round table with hardwood top.

- 1 The luxurious bedroom features a queen bed with wood-framed headboard and solid surface nightstands. Plentiful storage is provided by the wardrobe closet, dresser and roomy overhead cabinets. And you'll kick back in style with the 20" TV (20" LCD TV in the 40PRQ) and optional combination AM/FM/CD/DVD player.

(40PAQ, Champagne Select, Regal Way)

- 2 The slide-outs are framed by beautiful hardwood fascia trim with a new decorative center block. (40PAQ, Champagne Select, Regal Way)

- 3 Top-of-the-line quality and contemporary styling come together in the kitchen, with a beautiful polished, radius solid surface countertop and a Corian® backsplash. The sleek stainless steel appliances include a large double-door refrigerator with ice maker and a versatile convection/microwave oven. (40PAQ, Champagne Select, Regal Way)

- 4 This year we raised the ceiling height to 7 feet, which is enhanced by the attractive soft touch padded vinyl ceiling. (40PAQ, Champagne Select, Regal Way)



**MORE SPACE. MORE POWER.  
AND YES, MORE BELLS AND WHISTLES.**

Welcome aboard the 2006 Diplomat! Year after year, this tremendous diesel value is one of the most popular coaches on the road. And the excitement continues with this latest edition. You'll be greeted by a full seven feet of ceiling height — taking spaciousness to new levels. Add to that the standard 400 HP Cummins® engine and the impressive features of the new optional Standard Run Savings Package, and you have a coach that far outshines anything in its class.

You'll know at once you've entered a Monaco coach, thanks to the impeccable decor and craftsmanship. The stunning woodwork features raised panel hardwood cabinet doors, hardwood end panels and crown molding. And throughout the coach, the cabinetry is outfitted with stylish satin nickel hardware.

Comfort and convenience reign in the dining area, with our legless solid surface table, two stylish chairs and two folding chairs. In the remarkable new 40PAQ floorplan, the spacious dinette is highlighted by four tall windows and a round table with hardwood top.

- 1 The luxurious bedroom features a queen bed with wood-framed headboard and solid surface nightstands. Plentiful storage is provided by the wardrobe closet, dresser and roomy overhead cabinets. And you'll kick back in style with the 20" TV (20" LCD TV in the 40PRQ) and optional combination AM/FM/CD/DVD player.

(40PAQ, Champagne Select, Regal Way)

- 2 The slide-outs are framed by beautiful hardwood fascia trim with a new decorative center block. (40PAQ, Champagne Select, Regal Way)

- 3 Top-of-the-line quality and contemporary styling come together in the kitchen, with a beautiful polished, radius solid surface countertop and a Corian® backsplash. The sleek stainless steel appliances include a large double-door refrigerator with ice maker and a versatile convection/microwave oven. (40PAQ, Champagne Select, Regal Way)

- 4 This year we raised the ceiling height to 7 feet, which is enhanced by the attractive soft touch padded vinyl ceiling. (40PAQ, Champagne Select, Regal Way)









**PANAVIEW™**

**1-PIECE WINDSHIELD**

Score another Monaco first for safety! Our exclusive Panaview™ 1-piece windshield gives you the largest unobstructed view of the road ahead. The wipers are discreetly mounted below your sightline, and the side pillars are more slender. In addition, the heated mirrors with turn signals are mounted on the front cap, so you don't have to turn your head to see. And inside the cockpit, power sunvisors and pull-down sunshades help eliminate dangerous glare.



 **PANAVIEW™**

**1-PIECE WINDSHIELD**

Score another Monaco first for safety! Our exclusive Panaview™ 1-piece windshield gives you the largest unobstructed view of the road ahead. The wipers are discreetly mounted below your sightline, and the side pillars are more slender. In addition, the heated mirrors with turn signals are mounted on the front cap, so you don't have to turn your head to see. And inside the cockpit, power sunvisors and pull-down sunshades help eliminate dangerous glare.



## HOW DO WE MEASURE LUXURY? WITH THE SMOOTHEST RIDE ON THE ROAD.

From this luxurious cockpit, you'll take control of the precision performance of the Roadmaster chassis with its mighty Cummins® 400 HP engine. Everything is strategically arranged to give you the best possible driving experience and to help minimize driver fatigue. From the steel cage cockpit construction and steel firewall, to the adjustable brake and accelerator pedals, you'll know you're in one of the safest coaches on the road today.

On the right side of the dash is the color monitor for the rear vision system with audio and an adjustable camera. It also displays information from the optional Aladdin™ Junior system, which tracks important engine and trip functions. And, you have the option of expanding your rear vision with a 3-camera system with adjustable center camera.

The cabinets over the cockpit house the exciting entertainment features, including a 24" flatscreen TV (or optional 27" LCD TV) and a home theater system with VCR/DVD player and surround sound speakers. The coach is also prepped for an optional digital satellite system.

- 1 Whether you're driving or parked, you'll enjoy the unsurpassed comfort of the Ultraleather™ cockpit seats (OptimaLeather™ in the Ralph Lauren Hampstead Lane sport decor). The pilot's seat features six-way power controls, while the co-pilot's has a power footrest. (40PAQ, Champagne Select, Regal Way)
- 2 Our exclusive side-hinged baggage doors are the easiest to use and offer unbeatable access to the storage compartments. The large pass-through bay with slide-out tray accommodates oversized items and puts everything within reach. (40PAQ, Champagne Select, Regal Way)



## HOW DO WE MEASURE LUXURY? WITH THE SMOOTHEST RIDE ON THE ROAD.

From this luxurious cockpit, you'll take control of the precision performance of the Roadmaster chassis with its mighty Cummins® 400 HP engine. Everything is strategically arranged to give you the best possible driving experience and to help minimize driver fatigue. From the steel cage cockpit construction and steel firewall, to the adjustable brake and accelerator pedals, you'll know you're in one of the safest coaches on the road today.

On the right side of the dash is the color monitor for the rear vision system with audio and an adjustable camera. It also displays information from the optional Aladdin™ Junior system, which tracks important engine and trip functions. And, you have the option of expanding your rear vision with a 3-camera system with adjustable center camera.

The cabinets over the cockpit house the exciting entertainment features, including a 24" flatscreen TV (or optional 27" LCD TV) and a home theater system with VCR/DVD player and surround sound speakers. The coach is also prepped for an optional digital satellite system.

- 1 Whether you're driving or parked, you'll enjoy the unsurpassed comfort of the Ultraleather™ cockpit seats (OptimaLeather™ in the Ralph Lauren Hampstead Lane sport decor). The pilot's seat features six-way power controls, while the co-pilot's has a power footrest. (40PAQ, Champagne Select, Regal Way)
- 2 Our exclusive side-hinged baggage doors are the easiest to use and offer unbeatable access to the storage compartments. The large pass-through bay with slide-out tray accommodates oversized items and puts everything within reach. (40PAQ, Champagne Select, Regal Way)





ROADMASTER RR8R RAISED RAIL CHASSIS

**A** The Diplomat features Monaco's exclusive Alumaframe® Superstructure. Our revolutionary system of aluminum C-Channel crossmembers runs the entire length of the unit, with double-welded intersections for added strength. This rigid design is both lighter and sturdier than wood or tubular aluminum frames — and much more reliable than butt-welded or screwed joint designs. From dirt roads to potholes, you can count on Alumaframe® to handle the relentless stresses of the road and provide superior structural integrity for many years to come.



Wood

Aluminum  
(Butt-Welded)Alumaframe®  
(C-Channel)

**B** A steel cage cockpit gives the Roadmaster chassis incomparable strength and safety in the front of the coach.

**C** Every Roadmaster chassis features a steel firewall for added protection in the cockpit.

**D** The main rails feature an exclusive raised rail design which provides for larger full pass-through storage bays with flush floors. Other highlights include a 3/8" thick frame rail — compared to the 1/4" of other manufacturers — and a stacked aluminum intercooler and radiator for optimum heat transfer and cooling.

**E** Dual fuel fill allows you to fill the tank from either side of the coach, for greater convenience and flexibility at the pump.

**F** This steel truss system is engineered as part of the chassis and provides outstanding strength and rigidity plus pass-through storage. In addition, the structure is pre-primed and coated with a rust-inhibiting paint.

**G** Eight air bags work in conjunction with eight gas-powered shock absorbers to prevent road trauma from ever reaching the coach.

Monitored leveling sensors continually adjust the air pressure at each axle to maintain a level ride and eliminate nosediving, weight transfer, and floating on curved roads. This system also stabilizes the coach on uneven surfaces.

**H** Automatic Traction Control (ATC) eliminates wheel slippage in slick conditions and heightens control. The Anti-Lock Braking System (ABS) gives you superior stopping power, especially on steep grades. Together, these sophisticated systems offer the very best safety on the road.

**I** The Diplomat features a gutsy standard Cummins® ISL 400 diesel engine with Allison® 3000 MH 6-speed World Transmission and electronic shifter.

The three-point engine mounting system lowers the coach's center of gravity and reduces the amount of vibration that reaches the coach. The mounting also makes the engine easier to service.

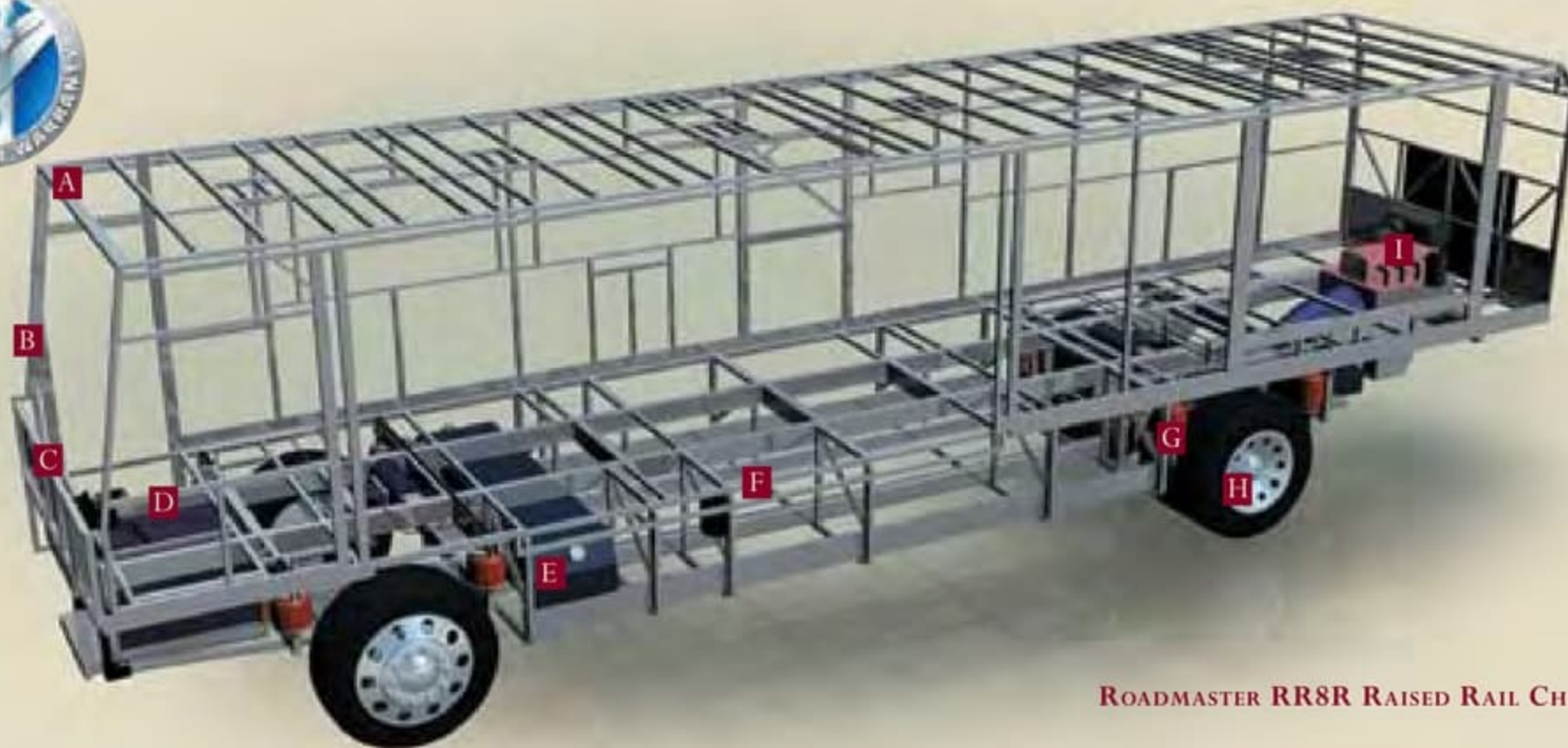
A 10,000 lb. tow hitch rating is the highest in its class.



#### OUTBOARD AIR BAG SUSPENSION

The outboard-mounted air bags are protected by two steel plates and are placed farther apart than the competition, providing a wider and more stable platform for the coach. The active suspension automatically adjusts the pressure of the air bags as you drive and virtually eliminates nose-diving and the side-to-side body sway associated with high wind conditions, curvy roads and emergency maneuvers.





ROADMASTER RR8R RAISED RAIL CHASSIS

**A** The Diplomat features Monaco's exclusive Alumaframe® Superstructure. Our revolutionary system of aluminum C-Channel crossmembers runs the entire length of the unit, with double-welded intersections for added strength. This rigid design is both lighter and sturdier than wood or tubular aluminum frames — and much more reliable than butt-welded or screwed joint designs. From dirt roads to potholes, you can count on Alumaframe® to handle the relentless stresses of the road and provide superior structural integrity for many years to come.



Wood

Aluminum  
(Butt-Welded)Alumaframe®  
(C-Channel)

**B** A steel cage cockpit gives the Roadmaster chassis incomparable strength and safety in the front of the coach.

**C** Every Roadmaster chassis features a steel firewall for added protection in the cockpit.

**D** The main rails feature an exclusive raised rail design which provides for larger full pass-through storage bays with flush floors. Other highlights include a 3/8" thick frame rail — compared to the 1/4" of other manufacturers — and a stacked aluminum intercooler and radiator for optimum heat transfer and cooling.

**E** Dual fuel fill allows you to fill the tank from either side of the coach, for greater convenience and flexibility at the pump.

**F** This steel truss system is engineered as part of the chassis and provides outstanding strength and rigidity plus pass-through storage. In addition, the structure is pre-primed and coated with a rust-inhibiting paint.

**G** Eight air bags work in conjunction with eight gas-powered shock absorbers to prevent road trauma from ever reaching the coach.

Monitored leveling sensors continually adjust the air pressure at each axle to maintain a level ride and eliminate nosediving, weight transfer, and floating on curved roads. This system also stabilizes the coach on uneven surfaces.

**H** Automatic Traction Control (ATC) eliminates wheel slippage in slick conditions and heightens control. The Anti-Lock Braking System (ABS) gives you superior stopping power, especially on steep grades. Together, these sophisticated systems offer the very best safety on the road.

**I** The Diplomat features a gutsy standard Cummins® ISL 400 diesel engine with Allison® 3000 MH 6-speed World Transmission and electronic shifter.

The three-point engine mounting system lowers the coach's center of gravity and reduces the amount of vibration that reaches the coach. The mounting also makes the engine easier to service.

A 10,000 lb. tow hitch rating is the highest in its class.



### OUTBOARD AIR BAG SUSPENSION

The outboard-mounted air bags are protected by two steel plates and are placed farther apart than the competition, providing a wider and more stable platform for the coach. The active suspension automatically adjusts the pressure of the air bags as you drive and virtually eliminates nose-diving and the side-to-side body sway associated with high wind conditions, curvy roads and emergency maneuvers.



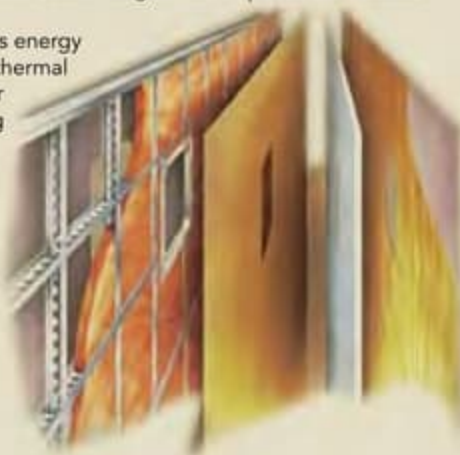
## ROOF CONSTRUCTION: (top to bottom)

- One-piece peaked fiberglass roof
- Luaun backing
- Thick, tapered bead foam insulation
- Aluminum double I-beam superstructure filled with fiberglass insulation
- Vapor barrier
- Structure foam: thermal insulative barrier
- 1/2" bead foam insulation
- Foam padding for extra insulation
- Padded vinyl ceiling



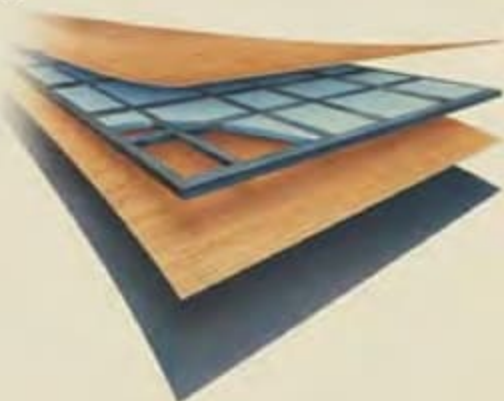
## SIDEWALL CONSTRUCTION: (left to right)

- Gel coat fiberglass
- Interlocking C-Channel filled with 1-1/2" fiberglass insulation glued in place so it doesn't sag or leave spaces uninsulated
- Vapor barrier
- Bead foam saves energy and provides a thermal insulative barrier
- Interior paneling



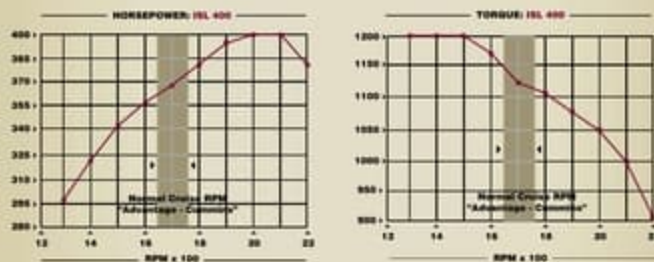
## FLOOR CONSTRUCTION: (bottom to top)

- Darco
- Luaun
- Blue foam
- 1-1/2" tube
- Structurwood™



## OUR PHILOSOPHY: DO ONE THING, AND DO IT BETTER THAN ANYONE

The quality of your coach all starts with the chassis on which it's built. Everything from safety and reliability to performance and convenience begins with the chassis you're driving. A division of Monaco Coach Corporation, Roadmaster is the leading high-end diesel chassis manufacturer — because that's all we do. Yes, we have a 100% commitment to producing only chassis for motorhomes. And that's something no other chassis manufacturer can say.



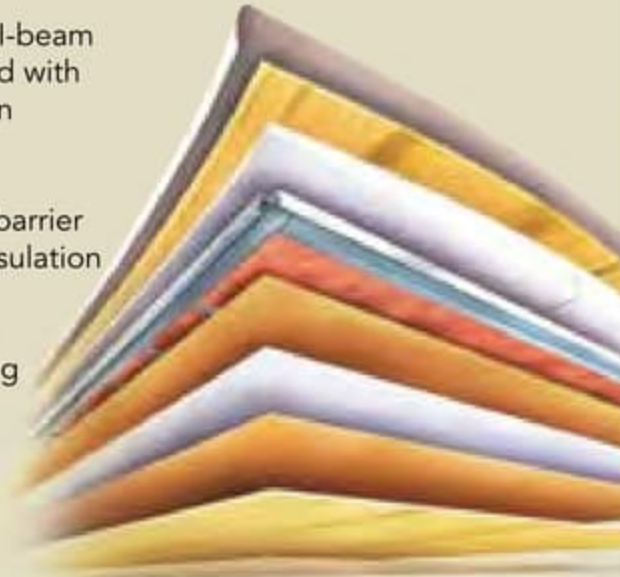
The 2006 Diplomat is powered by a Cummins® ISL 400 HP engine — giving you maximum torque at the RPM where you need it most.



You'll enjoy a full package of high-quality awnings, including automatic awnings for the patio and front door.

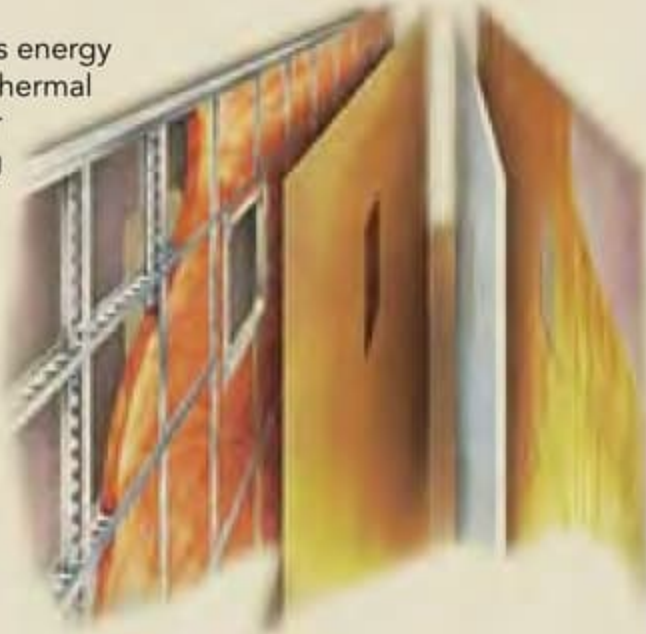
ROOF CONSTRUCTION: (top to bottom)

- One-piece peaked fiberglass roof
- Luaun backing
- Thick, tapered bead foam insulation
- Aluminum double I-beam superstructure filled with fiberglass insulation
- Vapor barrier
- Structure foam: thermal insulative barrier
- 1/2" bead foam insulation
- Foam padding for extra insulation
- Padded vinyl ceiling



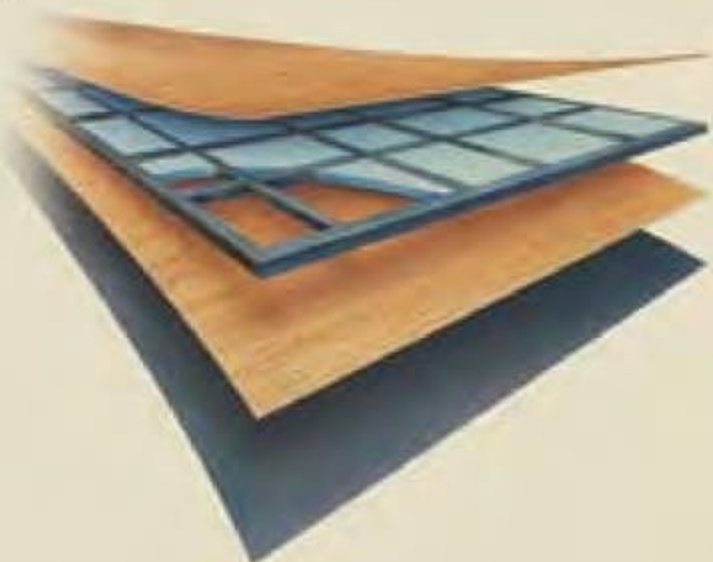
SIDEWALL CONSTRUCTION: (left to right)

- Gel coat fiberglass
- Interlocking C-Channel filled with 1-1/2" fiberglass insulation glued in place so it doesn't sag or leave spaces uninsulated
- Vapor barrier
- Bead foam saves energy and provides a thermal insulative barrier
- Interior paneling



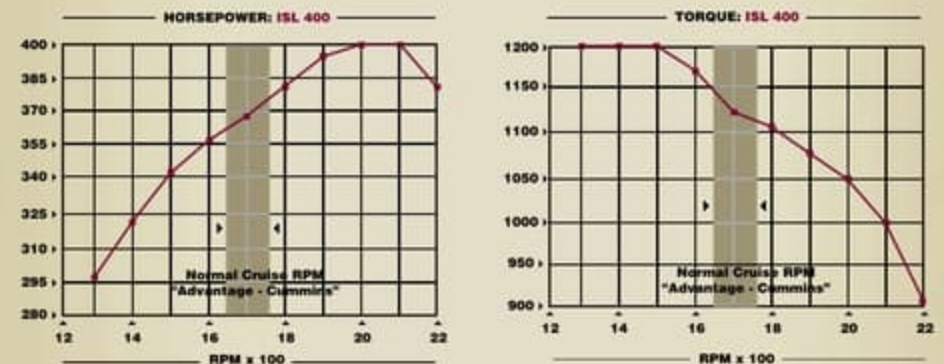
FLOOR CONSTRUCTION: (bottom to top)

- Darco
- Luaun
- Blue foam
- 1-1/2" tube
- Structurwood™



**OUR PHILOSOPHY: DO ONE THING,  
AND DO IT BETTER THAN ANYONE**

The quality of your coach all starts with the chassis on which it's built. Everything from safety and reliability to performance and convenience begins with the chassis you're driving. A division of Monaco Coach Corporation, Roadmaster is the leading high-end diesel chassis manufacturer — because that's all we do. Yes, we have a 100% commitment to producing only chassis for motorhomes. And that's something no other chassis manufacturer can say.



The 2006 Diplomat is powered by a Cummins® ISL 400 HP engine — giving you maximum torque at the RPM where you need it most.



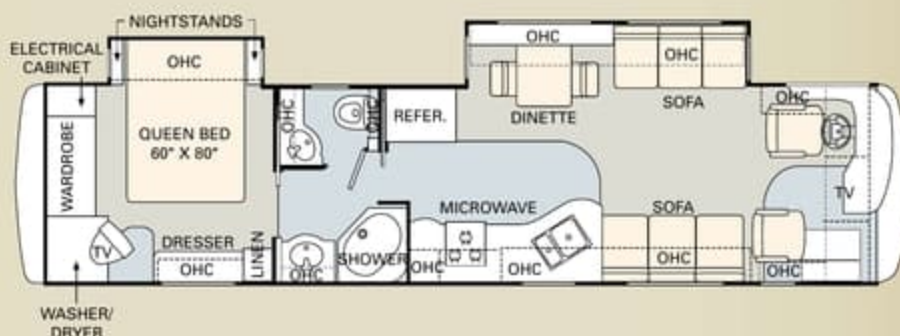
You'll enjoy a full package of high-quality awnings, including automatic awnings for the patio and front door.

The 2006 Diplomat is available in a remarkable selection of innovative floorplans ranging from 38' to 40', with double, triple and quad slide-outs. No matter which one you choose, you'll enjoy more livable interior space and more easy-to-reach storage than any other manufacturer has to offer.

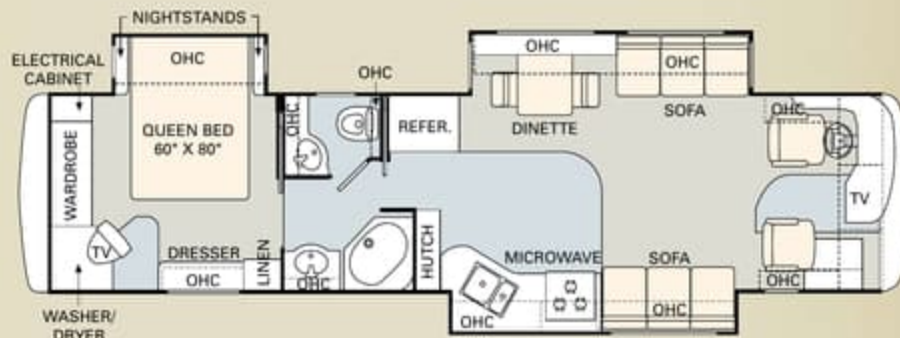
TILE CARPET

### Furniture Options:

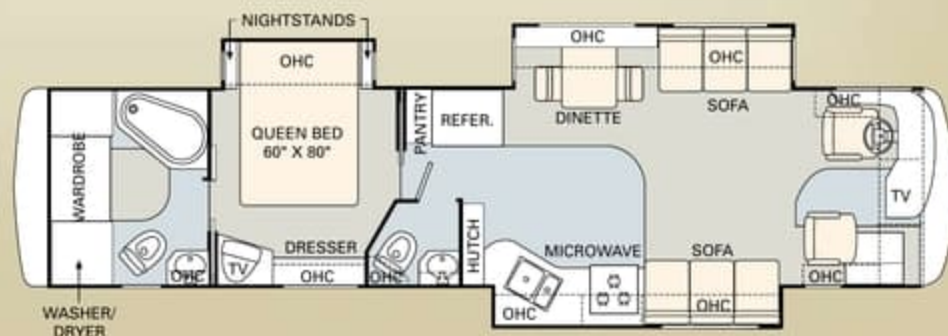
- Roadside: Fabric Ultra Flex Relaxation Center (N/A: 40PET)
- Curbside: OptimaLeather™ Euro-Recliner with Ottoman, Heat and Massage (40PAQ)
- Curbside: Computer Workstation with 27" LCD TV and Ultraleather™ Euro-Recliner with Ottoman, Heat and Massage (N/A: 38PDD, 40PAQ)
- King Bed (72" x 80") with One Nightstand (40PDQ)
- Bathtub



38PDD



38PST



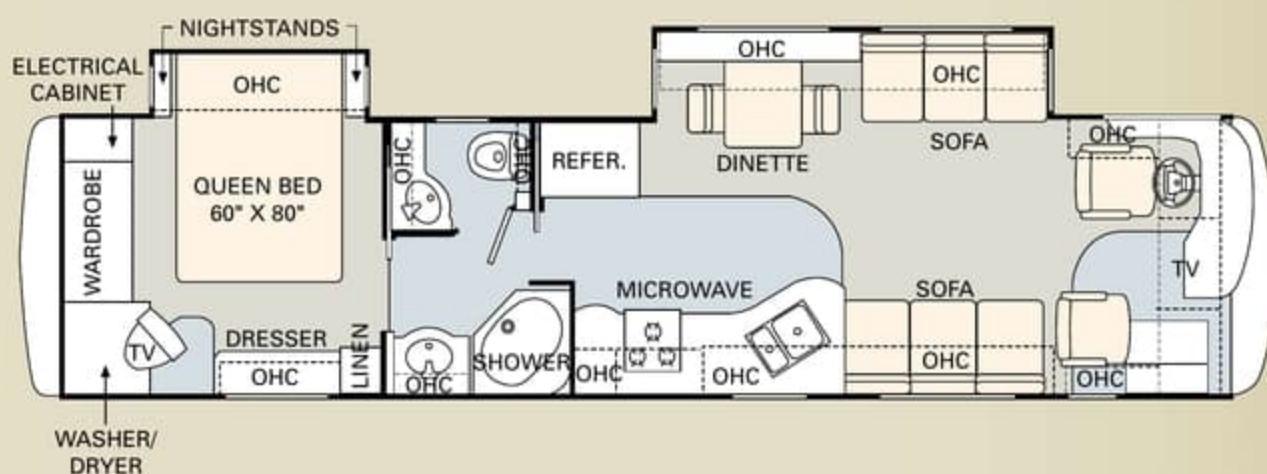
40DST

The 2006 Diplomat is available in a remarkable selection of innovative floorplans ranging from 38' to 40', with double, triple and quad slide-outs. No matter which one you choose, you'll enjoy more livable interior space and more easy-to-reach storage than any other manufacturer has to offer.

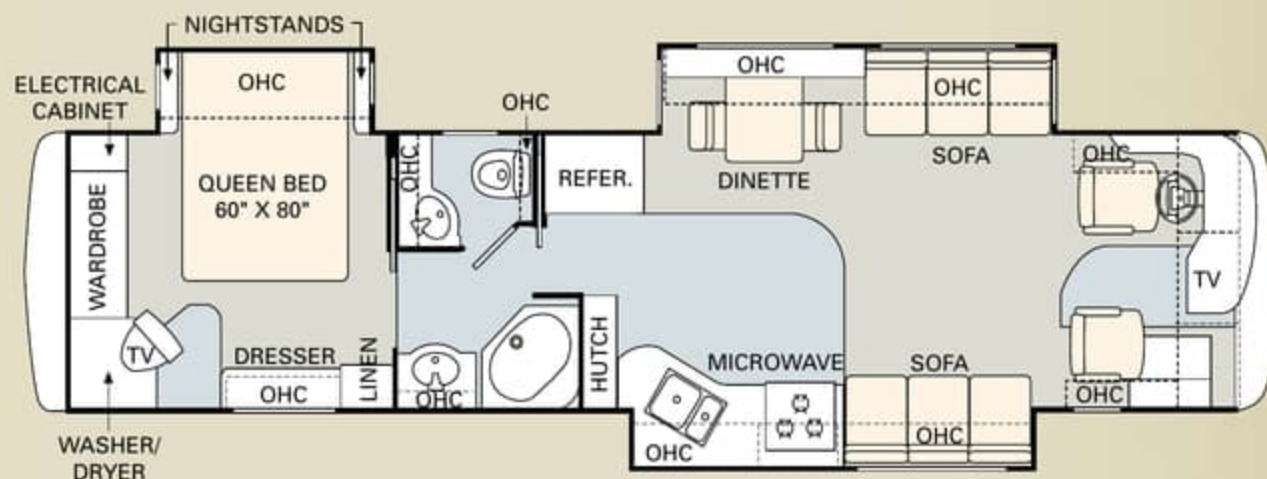
 TILE       CARPET

## Furniture Options:

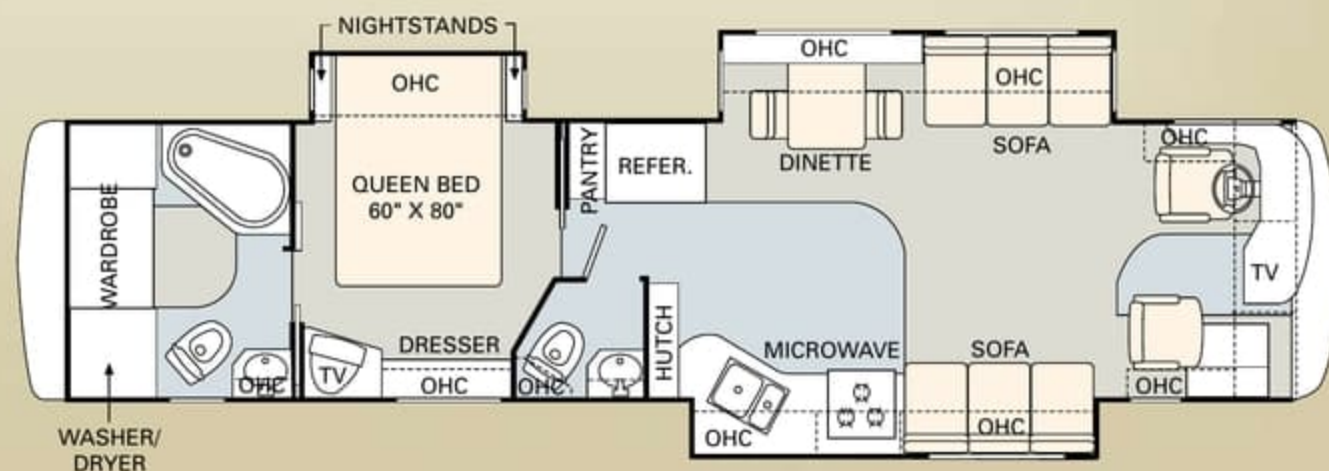
- Roadside: Fabric Ultra Flex Relaxation Center (N/A: 40PET)
- Curbside: OptimaLeather™ Euro-Recliner with Ottoman, Heat and Massage (40PAQ)
- Curbside: Computer Workstation with 27" LCD TV and UltraLeather™ Euro-Recliner with Ottoman, Heat and Massage (N/A: 38PDD, 40PAQ)
- King Bed (72" x 80") with One Nightstand (40PDQ)
- Bathtub



38PDD



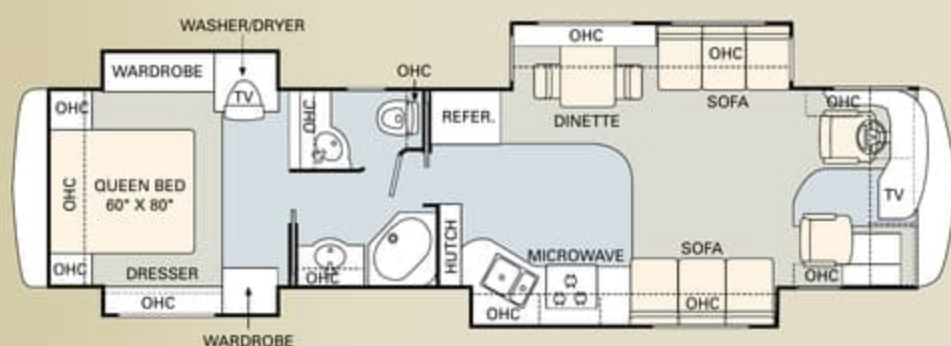
38PST



40DST



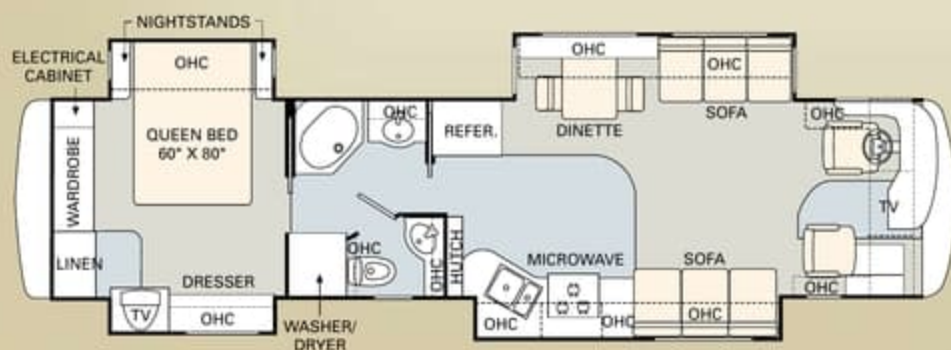
40PET



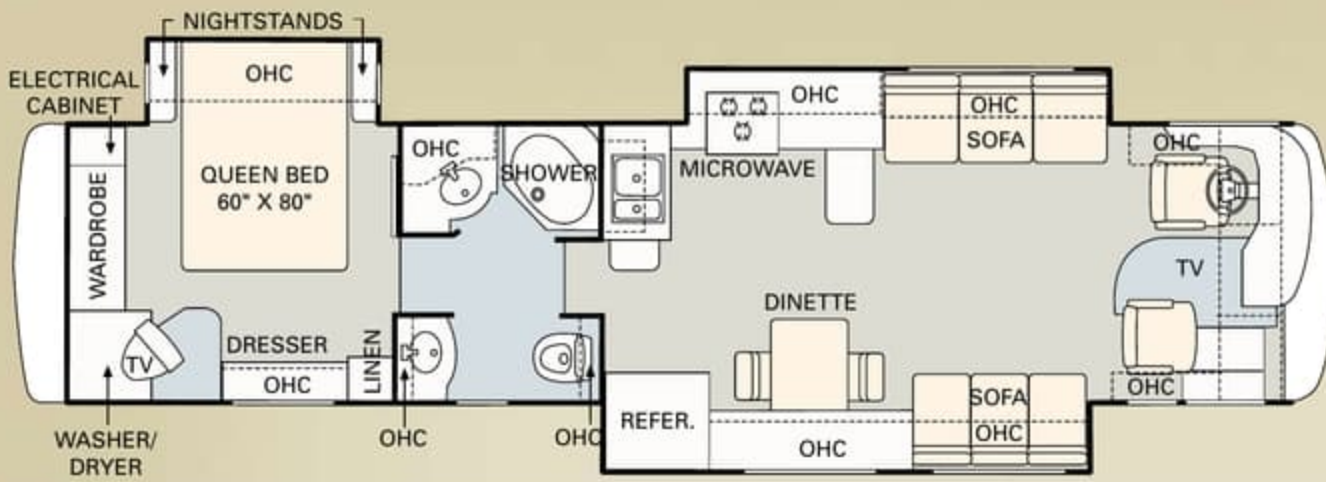
40PRQ



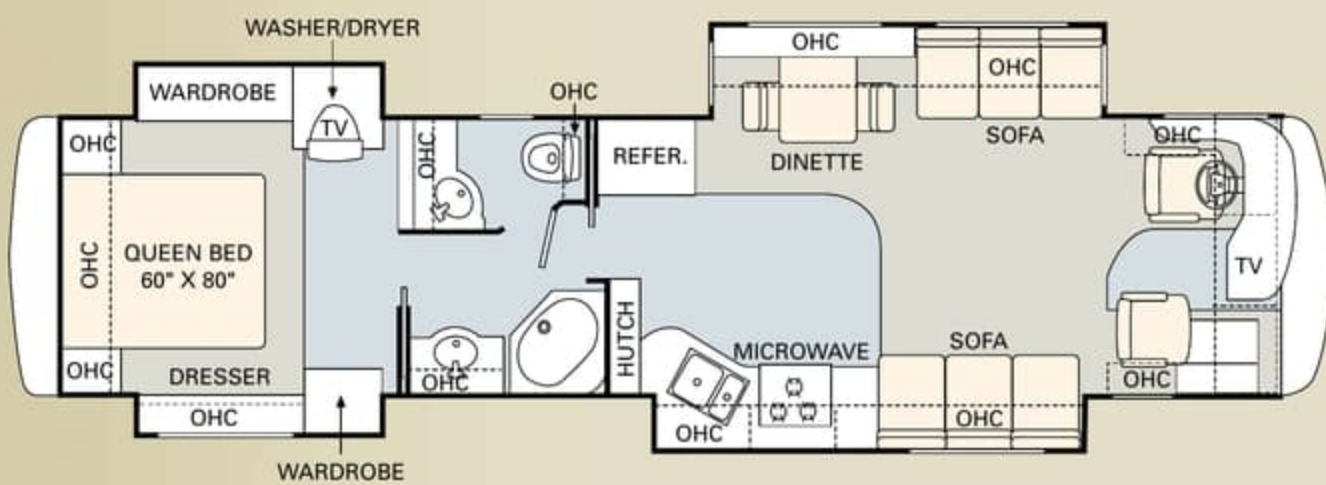
40PAQ



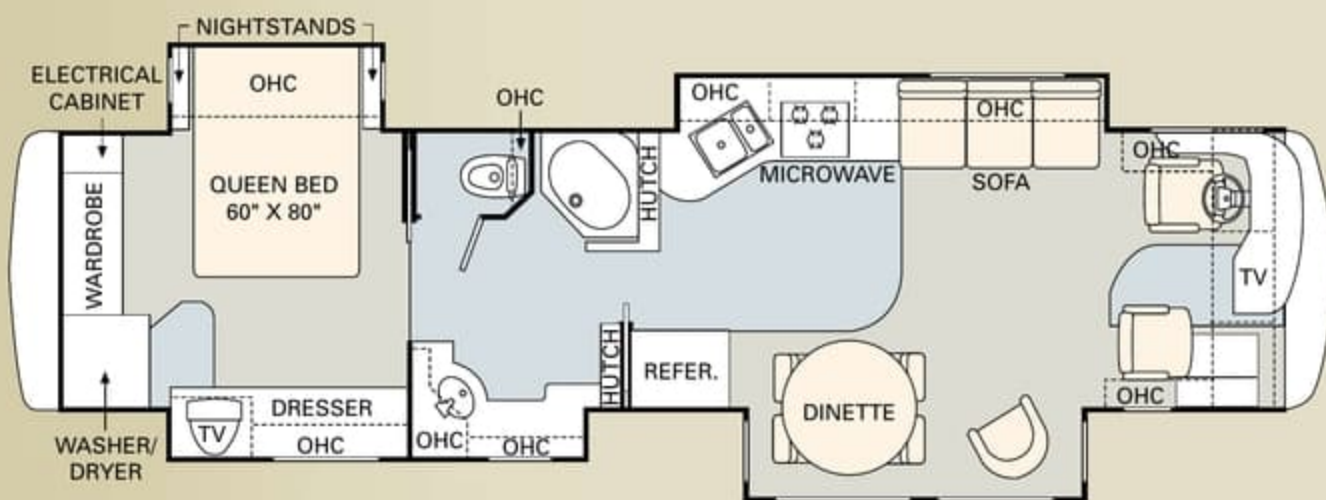
40PDQ



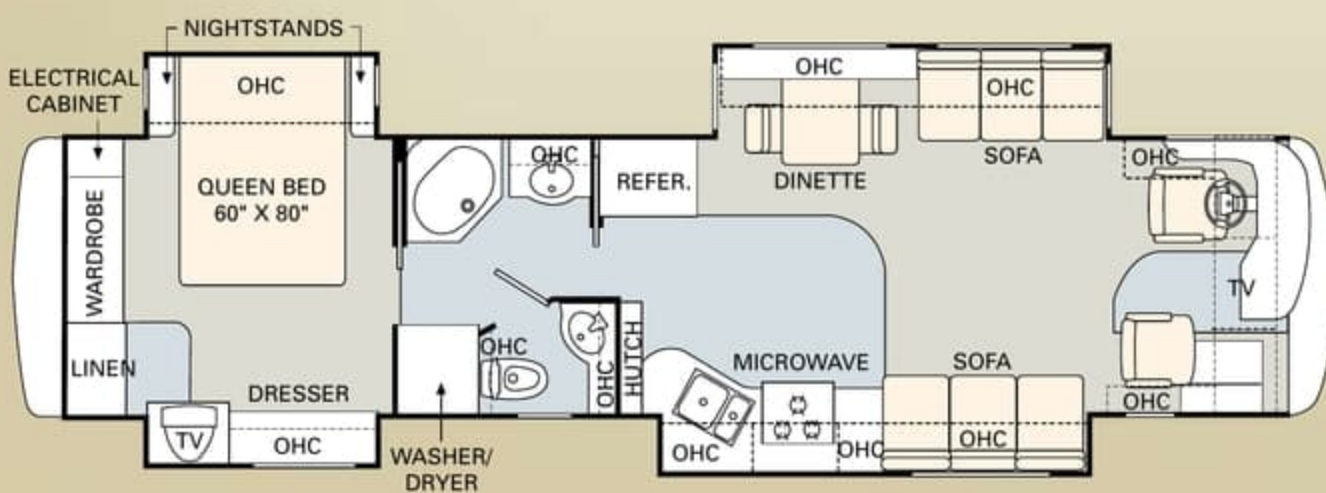
40PET



40PRQ



40PAQ



40PDQ

When you think Monaco, you think impeccable styling. And 2006 is no exception. No matter where your tastes lie — from traditional to contemporary, conservative to bold — we give you more ways to turn your motorhome into your dream home. The Diplomat is proud to offer the Hampstead Lane Sport Decor by Ralph Lauren.

Note: Colors depicted are a reasonable representation though they may not be an exact match of the actual colors due to variances in processing and production. See your dealer for actual fabric and paint chip samples.

### Better Stain Protection



Manufactured in, not added on. For added protection against stains, soil repellent is applied to virtually all upholstery fabric during the finishing process for superior coverage.\*

\*Brand and application of upholstery fabric protection may vary depending on date recreational vehicle was manufactured.



- A Carpet
- B Dinette
- C Sofa
- D Bedspread



ALPINE PRAIRIE



BROOKWOOD



NEW VINTAGE OAK



NEWPORT CHERRY



CHAMPAGNE SELECT

When you think Monaco, you think impeccable styling. And 2006 is no exception. No matter where your tastes lie — from traditional to contemporary, conservative to bold — we give you more ways to turn your motorhome into your dream home. The Diplomat is proud to offer the Hampstead Lane Sport Decor by Ralph Lauren.

Note: Colors depicted are a reasonable representation though they may not be an exact match of the actual colors due to variances in processing and production. See your dealer for actual fabric and paint chip samples.

## Better Stain Protection



Manufactured in, not added on. For added protection against stains, soil repellent is applied to virtually all upholstery fabric during the finishing process for superior coverage.\*

\*Brand and application of upholstery fabric protection may vary depending on date recreational vehicle was manufactured.



- A Carpet
- B Dinette
- C Sofa
- D Bedspread



ALPINE PRAIRIE



BROOKWOOD



NEW VINTAGE OAK



NEWPORT CHERRY



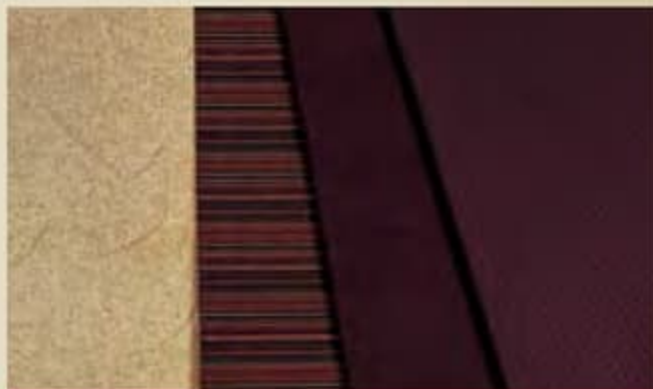
CHAMPAGNE SELECT



REGAL WAY



STONE MOUNTAIN

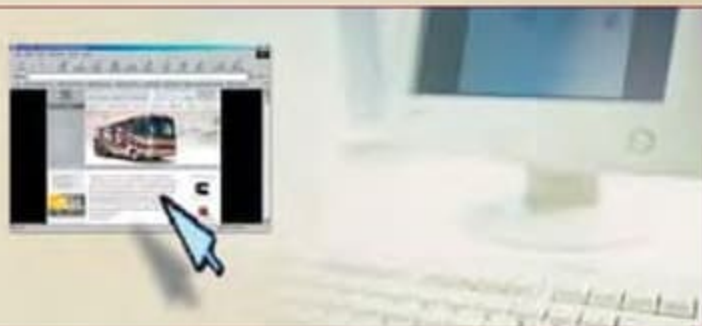


RALPH LAUREN HAMPSTEAD LANE SPORT

**WE'RE NEVER MORE THAN A CLICK AWAY.**

A great way to get the latest product news and updates is by visiting our website at [monacocoach.com](http://monacocoach.com). The site includes many features, including factory tours, a dealer locator function and information on scheduled club events. Plus, through the site, you may contact us directly at any time.

[www.monacocoach.com](http://www.monacocoach.com)

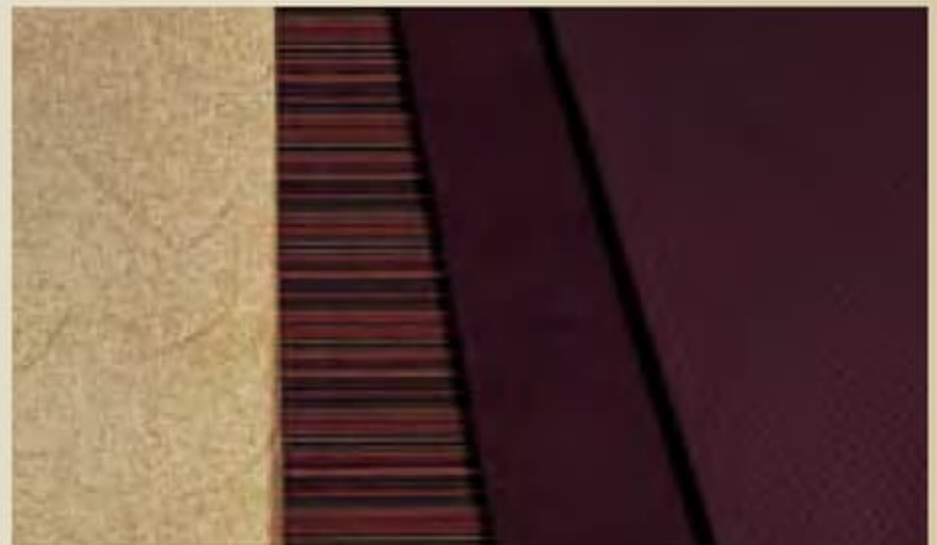




REGAL WAY



STONE MOUNTAIN

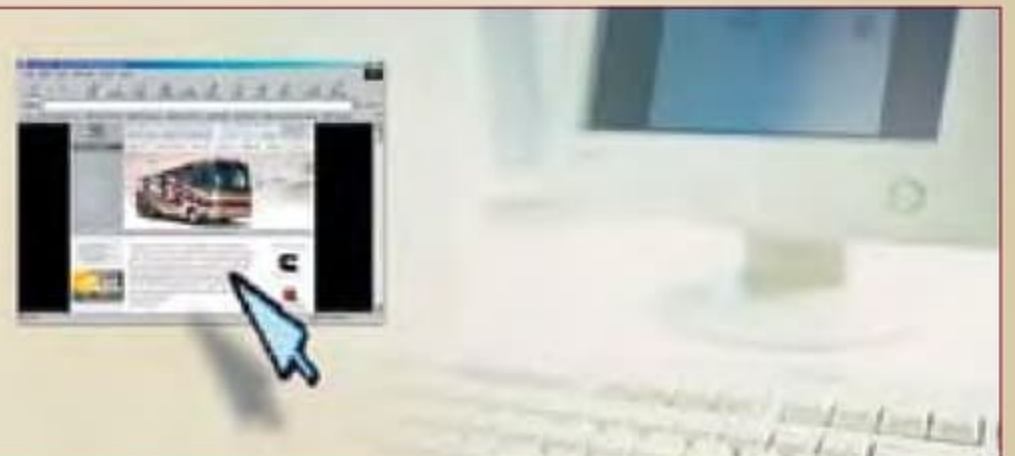


RALPH LAUREN HAMPSTEAD LANE SPORT

**WE'RE NEVER MORE THAN A CLICK AWAY.**

A great way to get the latest product news and updates is by visiting our website at [monacocoach.com](http://monacocoach.com). The site includes many features, including factory tours, a dealer locator function and information on scheduled club events. Plus, through the site, you may contact us directly at any time.

[www.monacocoach.com](http://www.monacocoach.com)



	Weight Ratings (Lbs.)				Measurements						Tank Capacity (Gal.) <sup>2</sup>					
	Gross Vehicle	Gross Combined <sup>1</sup>	Front Gross Axle	Rear Gross Axle	Wheelbase	Overall Length	Overall Height (with A/C add 5" for satellite option)	Interior Height	Interior Width	Exterior Width	Water Heater	Gray Tank	Black Tank	Fresh Tank	LP Tank <sup>3</sup>	Fuel Tank
38PDD	33,000	43,000	13,000	20,000	237"	38' 11"	12' 10"	84"	94.5"	100.5"	10	62	40	100	39	100
38PST	33,000	43,000	13,000	20,000	237"	38' 11"	12' 10"	84"	94.5"	100.5"	10	62	40	100	39	100
40DST	33,000	43,000	13,000	20,000	261"	40' 11"	12' 10"	84"	94.5"	100.5"	10	62	40	100	39	100
40PET	33,000	43,000	13,000	20,000	261"	40' 11"	12' 10"	84"	94.5"	100.5"	10	62	40	100	39	100
40PRQ	33,000	43,000	13,000	20,000	261"	40' 11"	12' 10"	84"	94.5"	100.5"	10	62	40	100	39	100
40PAQ	33,000	43,000	13,000	20,000	261"	40' 11"	12' 10"	84"	94.5"	100.5"	10	62	40	100	39	100
40PDQ	33,000	43,000	13,000	20,000	261"	40' 11"	12' 10"	84"	94.5"	100.5"	10	62	40	100	39	100

1 Towing capacity is limited by GCWR; your vehicle's towing capacity is the difference between the GCWR and the actual vehicle weight, including all water, fuel, passengers and cargo. Your towed vehicle should be equipped with auxiliary brakes if the weight of the towed vehicle exceeds 1,000 lbs. Consult your owner's manual for further towing information.

2 All tank capacities are estimated based upon calculations provided by the tank manufacturers and represent approximate capacities. The actual "usable capacity" may be greater or less than the estimated capacities based upon fabrication and installation of the tanks.

3 Actual filled LP capacity is 80% of listing due to safety shut-off required on tank.

The actual overall length of the recreational vehicle may differ from that indicated in the brochure due to variances in the manufacturing process and/or installed components. The actual length may be greater or less than that indicated. Due to the large variety of options and floorplan arrangements available to our customers, actual weights for each unit can differ significantly. Monaco Coach provides a weight sticker on each unit we produce which includes that unit's tank capacities and approximate weight. Consult your local Monaco Coach dealer for unit availability and further information. The information printed in this brochure reflects product design, fabrication, and component parts at the date of printing. The manufacturer reserves the right, at any time, to make changes in product design or material or component specifications as its sole option, without notice. This includes the substitution of components of a different brand or trade name which will result in comparable performance. All information printed in this brochure is subject to change after the date of printing. Some features shown or mentioned in this brochure are optional and may only be available in selected floorplans. Photographs may show props or decorations that are not standard equipment on Monaco Coach models. Monaco Coach, the Monaco logo and its design, are registered trademarks. All other products and company names are trademarks and/or registered trademarks of their respective holders. While the color of the motorhome's exterior and the interior fabrics depicted in this sales brochure are fair and reasonable depictions, the colors depicted may not be an exact match of the actual colors because of the variances in photo-processing and variances caused by inserting the photographs within the sales brochure. Due to product improvements, changes during the model year and/or transcription errors that may occur, information represented within this brochure may not be accurate at the time of your purchase. If certain information is significant to your purchasing decision, please confirm the information with your dealer prior to submitting your order. Component part and appliance manufacturers issue limited warranties covering those portions of the recreational vehicle not covered by the Limited Warranties issued by Monaco Coach Corporation. To learn which specific component parts and appliances are excluded from the Limited Warranties issued by Monaco Coach Corporation, please contact your selling dealership or Monaco Coach Corporation directly, or review the warranty packet inside the recreational vehicle.

## WARRANTIES

**12 month/24,000 mile**  
basic limited warranty

**5 year/50,000 mile**  
limited warranty on aluminum or steel frame  
structure of sidewall, roof, front and rear cap

**3 year/36,000 mile**  
limited warranty on Roadmaster chassis

Applies to certain models. See owner's manual for complete details.



## THERE'S STRENGTH IN OUR NUMBERS.

As you consider your RV purchase, there's one thing we'd like you to keep in mind: Nobody does customer service like Monaco. Period. Our staff is available 24/7/365 to help you with virtually any situation that may arise — with troubleshooting, operational instruction or facilitating repairs at the nearest of our 350 nationwide service centers. In addition, you'll be enrolled in our Owner Advantage Roadside Assistance Program free of charge for your first year of ownership — providing additional emergency assistance, including towing, tire repairs and many more services around the clock. In short, when you purchase an RV from Monaco Coach Corporation, you get a wider array of benefits than any other manufacturer can offer. To see it all for yourself, call 1-800-634-0855 or 1-800-650-7337 to arrange a tour of one of our state-of-the-art production facilities in Oregon or Indiana.

	Weight Ratings (Lbs.)						Measurements						Tank Capacity (Gal.) <sup>2</sup>						
	Gross Vehicle	Gross Combined <sup>1</sup>	Front Gross Axle	Rear Gross Axle		Wheelbase	Overall Length	Overall Height (with A/C) (add 5" for satellite option)	Interior Height	Interior Width	Exterior Width		Water Heater	Gray Tank	Black Tank	Fresh Tank	LP Tank <sup>3</sup>	Fuel Tank	
38PDD	33,000	43,000	13,000	20,000		237"	38' 11"	12' 10"	84"	94.5"	100.5"		10	62	40	100	39	100	
38PST	33,000	43,000	13,000	20,000		237"	38' 11"	12' 10"	84"	94.5"	100.5"		10	62	40	100	39	100	
40DST	33,000	43,000	13,000	20,000		261"	40' 11"	12' 10"	84"	94.5"	100.5"		10	62	40	100	39	100	
40PET	33,000	43,000	13,000	20,000		261"	40' 11"	12' 10"	84"	94.5"	100.5"		10	62	40	100	39	100	
40PRQ	33,000	43,000	13,000	20,000		261"	40' 11"	12' 10"	84"	94.5"	100.5"		10	62	40	100	39	100	
40PAQ	33,000	43,000	13,000	20,000		261"	40' 11"	12' 10"	84"	94.5"	100.5"		10	62	40	100	39	100	
40PDQ	33,000	43,000	13,000	20,000		261"	40' 11"	12' 10"	84"	94.5"	100.5"		10	62	40	100	39	100	

1 Towing capacity is limited by GCWR; your vehicle's towing capacity is the difference between the GCWR and the actual vehicle weight, including all water, fuel, passengers and cargo. Your towed vehicle should be equipped with auxiliary brakes if the weight of the towed vehicle exceeds 1,000 lbs. Consult your owner's manual for further towing information.

2 All tank capacities are estimated based upon calculations provided by the tank manufacturers and represent approximate capacities. The actual "usable capacity" may be greater or less than the estimated capacities based upon fabrication and installation of the tanks.

3 Actual filled LP capacity is 80% of listing due to safety shut-off required on tank.

The actual overall length of the recreational vehicle may differ from that indicated in the brochure due to variances in the manufacturing process and/or installed components. The actual length may be greater or less than that indicated. Due to the large variety of options and floorplan arrangements available to our customers, actual weights for each unit can differ significantly. Monaco Coach provides a weight sticker on each unit we produce which includes that unit's tank capacities and approximate weight. Consult your local Monaco Coach dealer for unit availability and further information. The information printed in this brochure reflects product design, fabrication, and component parts at the date of printing. The manufacturer reserves the right, at any time, to make changes in product design or material or component specifications as its sole option, without notice. This includes the substitution of components of a different brand or trade name which will result in comparable performance. All information printed in this brochure is subject to change after the date of printing. Some features shown or mentioned in this brochure are optional and may only be available in selected floorplans. Photographs may show props or decorations that are not standard equipment on Monaco Coach models. Monaco Coach, the Monaco logo and its design, are registered trademarks. All other products and company names are trademarks and/or registered trademarks of their respective holders. While the color of the motorhome's exterior and the interior fabrics depicted in this sales brochure are fair and reasonable depictions, the colors depicted may not be an exact match of the actual colors because of the variances in photo-processing and variances caused by inserting the photographs within the sales brochure. Due to product improvements, changes during the model year and/or transcription errors that may occur, information represented within this brochure may not be accurate at the time of your purchase. If certain information is significant to your purchasing decision, please confirm the information with your dealer prior to submitting your order. Component part and appliance manufacturers issue limited warranties covering those portions of the recreational vehicle not covered by the Limited Warranties issued by Monaco Coach Corporation. To learn which specific component parts and appliances are excluded from the Limited Warranties issued by Monaco Coach Corporation, please contact your selling dealership or Monaco Coach Corporation directly, or review the warranty packet inside the recreational vehicle.

## WARRANTIES

**12 month/24,000 mile**  
basic limited warranty

**5 year/50,000 mile**  
limited warranty on aluminum or steel frame  
structure of sidewall, roof, front and rear cap

**3 year/36,000 mile**  
limited warranty on Roadmaster chassis

Applies to certain models. See owner's manual for complete details.



## THERE'S STRENGTH IN OUR NUMBERS.

As you consider your RV purchase, there's one thing we'd like you to keep in mind: Nobody does customer service like Monaco. Period. Our staff is available 24/7/365 to help you with virtually any situation that may arise — with troubleshooting, operational instruction or facilitating repairs at the nearest of our 350 nationwide service centers. In addition, you'll be enrolled in our Owner Advantage Roadside Assistance Program free of charge for your first year of ownership — providing additional emergency assistance, including towing, tire repairs and many more services around the clock. In short, when you purchase an RV from Monaco Coach Corporation, you get a wider array of benefits than any other manufacturer can offer. To see it all for yourself, call 1-800-634-0855 or 1-800-650-7337 to arrange a tour of one of our state-of-the-art production facilities in Oregon or Indiana.

**BODY CONSTRUCTION**

Alumaframe® Superstructure  
 Steel Cage Cockpit Construction  
 One-Piece Peaked Fiberglass Roof with Fiberglass Insulation  
 One-Piece Windshield  
 Interior Height 84"  
 Smooth Gel Coat Fiberglass Exterior Walls  
 Front Molded Fiberglass Cap  
 Rear Molded Fiberglass Cap with Integrated Air Intake  
 One-Piece Generator Access Door  
 Rear Engine Door Struts  
 Angled Fiberglass Engine Cover  
 Steel Framed Floor on Steel Trusses  
 Laminated Structurwood™ Flooring

Electric Flush-Floor Stepwell Cover  
 Interior Paneling with 3/4" Insulation  
 Foam Insulated Floor Framing with Luaun Backer  
 Storage Bay Slide-Out Tray (Complete Pass-Through)  
 17.5" Chrome Power Heated Mirror with Turn Signal  
 Side-Hinged Baggage Doors; All Door Locations with Redesigned Extrusion and Latch Locations  
 Fog Lights  
 Flush-Mount Metal Fuel Doors  
 One-Piece Polyethylene Pass-Through Storage Compartment  
 Full-Length Mud Flap

3M Film Front Mask  
 Deluxe Full-Body Paint  
 Interior Entry Step Storage  
 Roof Ladder  
 Undercoating

**OPTIONS**

Slide-Out Battery Tray  
 Standard Run Savings Package:  
 Slide-Out Battery Tray, 3-Camera Rear Vision System with Audio and Adjustable Center Camera, Solid Surface Kitchen Sink, Pillow Top Mattress, Auto Generator Start, 50 Amp Power Cord Reel, Exterior Tank Monitor Gauge, Keyless Entry

**CHASSIS/ENGINE/SUSPENSION**

Roadmaster Raised Rail  
 RR8R-Series Chassis  
 Cummins® 400 HP ISL Engine with Allison® 3000 MH 6-Speed World Transmission and Electronic Shifter  
 Torque (@ 1,300 RPM) 1,200 lbs./ft. Max. Net  
 Engine Displacement 540"/8.8L  
 Aluminum Rear-Mount Radiator with CAC Cooler  
 Dual Fuel Fill

160 Amp Alternator  
 Rear Axle Ratio: 4.30:1  
 Goodyear Radial Tires 275/80R/22.5"  
 Pre-Wire for Supplemental Braking System  
 Polished Aluminum Wheels  
 Cushion Air-Glide Suspension with Eight Outboard-Mounted Air Bags and Eight Monroe Shock Absorbers

Anti-Lock Braking System with Full Air Brakes  
 Automatic Traction Control  
 Exhaust Braking System  
 Auto Slack Adjusters on Brakes  
 Engine Block Heater  
 Rock Shield Guard to Radiator  
 10,000 Lb. Hitch Receiver with Seven-Point Connector  
 Fully Automatic Hydraulic Leveling Jacks

**COCKPIT**

Automotive Dash with Aztec Pewter Instrumentation Panel  
 CD Player/Radio with Sirius-Ready Compatibility and Weather Band  
 Power Sunvisors  
 Pilot and Co-Pilot Pull-Down Sunshades  
 Wood-Framed Cabinet Doors with Smoked Glass over Front Entertainment Center System  
 Cockpit Front and Side Overhead Cabinet Doors Top-Hinged Doors with Self-Supporting Hinges  
 Adjustable Brake and Accelerator Pedals  
 110V, 12V and Phone Outlet

Color Rear Vision System with Audio and Adjustable Camera  
 Lighted VIP Smartwheel® Multiplexed Steering Wheel with Controls for Windshield Wipers, ICC and Cruise Control  
 Intermittent Windshield Wiper  
 10-Quart Tank for Windshield Fluid with Fluid Sensor to Tank and "Low Wash" Indicator on Dash  
 Audible Turn Signals  
 Roof-Mounted Air Horn  
 CB Prep

Ultraleather™ 6-Way Pilot and Co-Pilot Seat with Power Footrest  
 New Style Distressed OptimaLeather™ Pilot and Co-Pilot Seats (with Hampstead Lane Ralph Lauren Sport Decor)  
 Power Steering  
 Color-Coordinated Carpeted Floor Mats

**OPTIONS**

3-Camera Rear Vision System with Audio and Adjustable Center Camera  
 Aladdin™ Junior System  
 10-Disc CD Changer  
 Auxiliary Defroster

**BODY CONSTRUCTION**

Alumaframe® Superstructure  
 Steel Cage Cockpit Construction  
 One-Piece Peaked Fiberglass Roof with Fiberglass Insulation  
 One-Piece Windshield  
 Interior Height 84"  
 Smooth Gel Coat Fiberglass Exterior Walls  
 Front Molded Fiberglass Cap  
 Rear Molded Fiberglass Cap with Integrated Air Intake  
 One-Piece Generator Access Door  
 Rear Engine Door Struts  
 Angled Fiberglass Engine Cover  
 Steel Framed Floor on Steel Trusses  
 Laminated Structurwood™ Flooring

Electric Flush-Floor Stepwell Cover  
 Interior Paneling with 3/4" Insulation  
 Foam Insulated Floor Framing with Luaun Backer  
 Storage Bay Slide-Out Tray (Complete Pass-Through)  
 17.5" Chrome Power Heated Mirror with Turn Signal  
 Side-Hinged Baggage Doors; All Door Locations with Redesigned Extrusion and Latch Locations  
 Fog Lights  
 Flush-Mount Metal Fuel Doors  
 One-Piece Polyethylene Pass-Through Storage Compartment  
 Full-Length Mud Flap

3M Film Front Mask  
 Deluxe Full-Body Paint  
 Interior Entry Step Storage  
 Roof Ladder  
 Undercoating

**OPTIONS**

Slide-Out Battery Tray  
 Standard Run Savings Package:  
 Slide-Out Battery Tray, 3-Camera Rear Vision System with Audio and Adjustable Center Camera, Solid Surface Kitchen Sink, Pillow Top Mattress, Auto Generator Start, 50 Amp Power Cord Reel, Exterior Tank Monitor Gauge, Keyless Entry

**CHASSIS/ENGINE/SUSPENSION**

Roadmaster Raised Rail  
 RR8R-Series Chassis  
 Cummins® 400 HP ISL Engine with Allison® 3000 MH 6-Speed World Transmission and Electronic Shifter  
 Torque (@ 1,300 RPM) 1,200 lbs./ft. Max. Net  
 Engine Displacement 540"/8.8L  
 Aluminum Rear-Mount Radiator with CAC Cooler  
 Dual Fuel Fill

160 Amp Alternator  
 Rear Axle Ratio: 4.30:1  
 Goodyear Radial Tires 275/80R/22.5"  
 Pre-Wire for Supplemental Braking System  
 Polished Aluminum Wheels  
 Cushion Air-Glide Suspension with Eight Outboard-Mounted Air Bags and Eight Monroe Shock Absorbers

Anti-Lock Braking System with Full Air Brakes  
 Automatic Traction Control  
 Exhaust Braking System  
 Auto Slack Adjusters on Brakes  
 Engine Block Heater  
 Rock Shield Guard to Radiator  
 10,000 Lb. Hitch Receiver with Seven-Point Connector  
 Fully Automatic Hydraulic Leveling Jacks

**COCKPIT**

Automotive Dash with Aztec Pewter Instrumentation Panel  
 CD Player/Radio with Sirius-Ready Compatibility and Weather Band  
 Power Sunvisors  
 Pilot and Co-Pilot Pull-Down Sunshades  
 Wood-Framed Cabinet Doors with Smoked Glass over Front Entertainment Center System  
 Cockpit Front and Side Overhead Cabinet Doors Top-Hinged Doors with Self-Supporting Hinges  
 Adjustable Brake and Accelerator Pedals  
 110V, 12V and Phone Outlet

Color Rear Vision System with Audio and Adjustable Camera  
 Lighted VIP Smartwheel® Multiplexed Steering Wheel with Controls for Windshield Wipers, ICC and Cruise Control  
 Intermittent Windshield Wiper  
 10-Quart Tank for Windshield Fluid with Fluid Sensor to Tank and "Low Wash" Indicator on Dash  
 Audible Turn Signals  
 Roof-Mounted Air Horn  
 CB Prep

Ultraleather™ 6-Way Pilot and Co-Pilot Seat with Power Footrest  
 New Style Distressed OptimaLeather™ Pilot and Co-Pilot Seats (with Hampstead Lane Ralph Lauren Sport Decor)  
 Power Steering  
 Color-Coordinated Carpeted Floor Mats

**OPTIONS**

3-Camera Rear Vision System with Audio and Adjustable Center Camera  
 Aladdin™ Junior System  
 10-Disc CD Changer  
 Auxiliary Defroster

## APPLIANCES AND ACCESSORIES

Large Stainless Steel Double-Door Refrigerator with Ice Maker  
 High-Output 3-Burner Cooktop without Oven  
 Removable Solid Surface Range Covers  
 Stainless Steel Microwave Convection Oven  
 24" Flatscreen Stereo Color TV with Remote Control in Cockpit Overhead  
 20" Color TV with Remote Control in Bedroom (N/A: 40PRQ)  
 20" LCD Color TV with Remote Control in Bedroom (40PRQ)  
 TV Antenna with Jacks

Home Theater System with DVD/VCR Player with Surround Sound Speakers  
 Exterior Hook-Ups for DSS Dish and Cable  
 Digital Satellite System Prep  
 Interior Cable TV Hook-Up and Telephone Jacks  
 Exterior Gas Line Hook-Up Prep for LP Accessories  
 Washer/Dryer Prep

## OPTIONS

Dometic Sidewise Stainless Steel 14 Cu. Ft. 2-Way Two-Door Refrigerator with Ice Dispenser in the Door (N/A: 40DST, 40PAQ)  
 High-Output Three-Burner Range with Oven (Replaces the Wastebasket and Storage) (N/A: 40PET)  
 Combination Washer/Dryer  
 Bedroom Clock Radio  
 AM/FM/CD/DVD Player  
 27" Flatscreen LCD TV in Front Cockpit Overhead  
 Fully Automatic Digital Satellite System  
 In-Motion Digital Satellite System

## INTERIOR

New Vintage Oak Cabinetry  
 Raised Panel Hardwood Cabinet Doors  
 Hardwood Cabinet End Panels  
 Self-Supporting Top-Hinged Overhead Storage Doors and Positive Catches on All Other Doors  
 Heavy-Duty Ball Bearing Drawer Guides  
 Crown Molding in Bedroom and Living Area  
 Metal Interior Grab Handle on Dash at Entry Door  
 Satin Nickel Cabinetry Hardware and Bath Accessories  
 Polished Radius Solid Surface Kitchen Countertop with Stainless Steel Sink with Two Sink Covers  
 Polished Solid Surface Kitchen Countertop Extension (40PET)  
 Polished V-Grooved Corian® Backsplash in Galley  
 Silverware Drawer with Organizer Kitchen Base Cabinets  
 Solid Surface Bathroom Countertop with Integrated Sink

Solid Surface Dinette Table Top (N/A: 40PAQ)  
 Round Dinette Table with Hardwood Top (40PAQ)  
 Solid Surface Nightstand Tops  
 Kitchen Overhead Cabinet with Adjustable Shelf  
 Sink and Stove Top Cover Storage Area inside Kitchen Base Cabinet  
 Ceramic Tile in Kitchen and Bath  
 Flooring in Front of Rear Bedroom  
 Cabinet Area to Match Kitchen Floor  
 Tile Entry Floor  
 Designer Carpeting in Living Area and Bedroom  
 Engine Rug Cover  
 Soft Touch Padded Vinyl Ceiling  
 Hardwood Slide-Out Fascia with New Decorative Center Block  
 Decorative Hardwood/Fabric Window Boxes Throughout Coach  
 Wood Framed Headboard with Fabric Inserts

Towel Bars (2) on Shower Door  
 Oversized Rear Closet Wardrobe with Mirror Doors and Frames in Satin Nickel (N/A: 40PRQ)  
 Bedroom Dresser with Solid Surface Countertop  
 Accent Mirror on Refrigerator Wall (N/A: 38PDD, 40PET)  
 Bathroom Lavatory Mirror  
 Pleated Day/Night Blackout Shades in Living Area and Bedroom, Mini Blinds in Private Bath  
 Soil Repellent Fabric Protection

## OPTIONS

New Decors: Regal Way, Brookwood, Alpine Prairie, Stone Mountain  
 Ralph Lauren Sport Decor: Hampstead Lane  
 Wood Choice: Newport Cherry, Champagne Select  
 Solid Surface Kitchen Sink

## FURNITURE

Legless Dinette Table with Two Chairs and Two Folding Chairs (N/A: 40PAQ)  
 Round Hardwood Dinette Table with Two Style Dinette Chairs and Two Folding Chairs (40PAQ)  
 Roadside Furniture: Fabric Easy-Bed Sofa  
 Curbside Furniture: Fabric Barrel Chair (40PAQ)  
 Curbside Furniture: Fabric Easy-Bed Sofa (N/A: 40PAQ)  
 Queen Bed (60" x 80") with Solid Surface Nightstands

## OPTIONS

Roadside Furniture: Fabric Hide-A-Bed with Air Mattress  
 Roadside Furniture: Fabric Ultra Flex Relaxation Center (N/A: 40PET)  
 Curbside Furniture: Ultraleather™ Hide-A-Bed with Air Mattress (N/A: 40PET, 40PAQ)  
 Curbside Furniture: Ultraleather™ Magic Bed Sofa (N/A: 40PET, 40PAQ)  
 Curbside Furniture: Ultraleather™ J-Lounge with Drawer (N/A: 40PAQ)

Curbside: Ultraleather™ Recliner (40PAQ)  
 Curbside: OptimaLeather™ Euro-Recliner with Ottoman, Heat and Massage (40PAQ)  
 Curbside Furniture: Computer Workstation with 27" LCD TV and Ultraleather™ Euro-Recliner with Ottoman, Heat and Massage (N/A: 38PDD, 40PAQ)  
 Pillow Top Mattress  
 King Bed (72" x 80") with One Nightstand (40PDQ)  
 Booth Dinette (N/A: 40PET, 40PAQ)

## APPLIANCES AND ACCESSORIES

Large Stainless Steel Double-Door Refrigerator with Ice Maker  
High-Output 3-Burner Cooktop without Oven  
Removable Solid Surface Range Covers  
Stainless Steel Microwave Convection Oven  
24" Flatscreen Stereo Color TV with Remote Control in Cockpit Overhead  
20" Color TV with Remote Control in Bedroom (N/A: 40PRQ)  
20" LCD Color TV with Remote Control in Bedroom (40PRQ)  
TV Antenna with Jacks

Home Theater System with DVD/VCR Player with Surround Sound Speakers  
Exterior Hook-Ups for DSS Dish and Cable  
Digital Satellite System Prep  
Interior Cable TV Hook-Up and Telephone Jacks  
Exterior Gas Line Hook-Up Prep for LP Accessories  
Washer/Dryer Prep

### OPTIONS

Dometic Sidewise Stainless Steel 14 Cu. Ft. 2-Way Two-Door Refrigerator with Ice Dispenser in the Door (N/A: 40DST, 40PAQ)  
High-Output Three-Burner Range with Oven (Replaces the Wastebasket and Storage) (N/A: 40PET)  
Combination Washer/Dryer  
Bedroom Clock Radio  
AM/FM/CD/DVD Player  
27" Flatscreen LCD TV in Front Cockpit Overhead  
Fully Automatic Digital Satellite System  
In-Motion Digital Satellite System

## INTERIOR

New Vintage Oak Cabinetry  
Raised Panel Hardwood Cabinet Doors  
Hardwood Cabinet End Panels  
Self-Supporting Top-Hinged Overhead Storage Doors and Positive Catches on All Other Doors  
Heavy-Duty Ball Bearing Drawer Guides  
Crown Molding in Bedroom and Living Area  
Metal Interior Grab Handle on Dash at Entry Door  
Satin Nickel Cabinetry Hardware and Bath Accessories  
Polished Radius Solid Surface Kitchen Countertop with Stainless Steel Sink with Two Sink Covers  
Polished Solid Surface Kitchen Countertop Extension (40PET)  
Polished V-Grooved Corian® Backsplash in Galley  
Silverware Drawer with Organizer Kitchen Base Cabinets  
Solid Surface Bathroom Countertop with Integrated Sink

Solid Surface Dinette Table Top (N/A: 40PAQ)  
Round Dinette Table with Hardwood Top (40PAQ)  
Solid Surface Nightstand Tops  
Kitchen Overhead Cabinet with Adjustable Shelf  
Sink and Stove Top Cover Storage Area inside Kitchen Base Cabinet  
Ceramic Tile in Kitchen and Bath  
Flooring in Front of Rear Bedroom  
Cabinet Area to Match Kitchen Floor  
Tile Entry Floor  
Designer Carpeting in Living Area and Bedroom  
Engine Rug Cover  
Soft Touch Padded Vinyl Ceiling  
Hardwood Slide-Out Fascia with New Decorative Center Block  
Decorative Hardwood/Fabric Window Boxes Throughout Coach  
Wood Framed Headboard with Fabric Inserts

Towel Bars (2) on Shower Door  
Oversized Rear Closet Wardrobe with Mirror Doors and Frames in Satin Nickel (N/A: 40PRQ)  
Bedroom Dresser with Solid Surface Countertop  
Accent Mirror on Refrigerator Wall (N/A: 38PDD, 40PET)  
Bathroom Lavatory Mirror  
Pleated Day/Night Blackout Shades in Living Area and Bedroom, Mini Blinds in Private Bath  
Soil Repellant Fabric Protection

### OPTIONS

New Decors: Regal Way, Brookwood, Alpine Prairie, Stone Mountain  
Ralph Lauren Sport Decor: Hampstead Lane  
Wood Choice: Newport Cherry, Champagne Select  
Solid Surface Kitchen Sink

## FURNITURE

Legless Dinette Table with Two Chairs and Two Folding Chairs (N/A: 40PAQ)  
Round Hardwood Dinette Table with Two Style Dinette Chairs and Two Folding Chairs (40PAQ)  
Roadside Furniture: Fabric Easy-Bed Sofa  
Curbside Furniture: Fabric Barrel Chair (40PAQ)  
Curbside Furniture: Fabric Easy-Bed Sofa (N/A: 40PAQ)  
Queen Bed (60" x 80") with Solid Surface Nightstands

### OPTIONS

Roadside Furniture: Fabric Hide-A-Bed with Air Mattress  
Roadside Furniture: Fabric Ultra Flex Relaxation Center (N/A: 40PET)  
Curbside Furniture: Ultraleather™ Hide-A-Bed with Air Mattress (N/A: 40PET, 40PAQ)  
Curbside Furniture: Ultraleather™ Magic Bed Sofa (N/A: 40PET, 40PAQ)  
Curbside Furniture: Ultraleather™ J-Lounge with Drawer (N/A: 40PAQ)

Curbside: Ultraleather™ Recliner (40PAQ)  
Curbside: OptimaLeather™ Euro-Recliner with Ottoman, Heat and Massage (40PAQ)  
Curbside Furniture: Computer Workstation with 27" LCD TV and Ultraleather™ Euro-Recliner with Ottoman, Heat and Massage (N/A: 38PDD, 40PAQ)  
Pillow Top Mattress  
King Bed (72" x 80") with One Nightstand (40PDQ)  
Booth Dinette (N/A: 40PET, 40PAQ)

**ELECTRICAL SYSTEMS AND LIGHTS**

50 Amp 12V Distribution Panel and Power Cord  
 Onan® 8.0 kW Quiet Diesel Generator on Manual Slide-Out  
 Four 6V Deep Cycle Batteries  
 Two 12V Heavy-Duty Chassis Batteries  
 Battery Disconnect Switch at Front Door  
 Battery Boost Switch in Cockpit  
 2,000 Watt Inverter  
 Recessed Docking Lights  
 Porch Light and Exterior Step Light on Same Switch  
 Lighted Interior Steps  
 Lights in Outside Storage Compartments with Switch on Passenger Console and Utility Bay

110 Outlet in Outside Storage Compartment  
 Underhood Utility Light  
 Redesigned Convenience Center in Hallway  
 Fluorescent Light(s) under Kitchen Overhead  
 Fluorescent Ceiling Lights Throughout  
 Decorative Lighting Satin Nickel with Swirled Glass  
 Fluorescent Ceiling Lights inside Living Area Slide-Out House  
 Decorative Framed Longer Galley Fluorescent Ceiling Light  
 Energy Management System

Directional Map Lights on Bottom of Front TV Cabinet  
 Halogen Light on Driver and Passenger Overhead  
 Pre-Wire for Solar Panel  
 Halogen Lights under Living Room, Dining Room, Bed Overhead and Bedroom Dresser Overhead Cabinets

**OPTIONS**

Auto Generator Start  
 Solar Panel  
 Power Cord Reel

**PLUMBING AND LP SYSTEMS**

Demand Water System and Water Pump  
 10 Gallon LP Gas/Electric Water Heater with Electronic Ignition DSI Water Heater Located below Floor (N/A: 40PET)  
 10 Gallon LP Gas/Electric Water Heater with Electronic Ignition DSI Water Heater Located above Floor (40PET)  
 Single-Lever Kitchen Faucet with Pullout Sprayer  
 Separate Satin Nickel Faucet for Filtered Water  
 Satin Nickel Bathroom Faucet  
 Single-Handle Satin Nickel Shower Faucet with Slide Bar

Water Heater Bypass Valve  
 Water Pump Switch in Convenience Center, Kitchen Galley and Service Bay Area  
 Thetford China Toilet  
 Thetford China Toilet Electronic Thetford Silent Plus (40DST)  
 Shower inside Wet Bay with Hot/Cold Water  
 No-Fuss Flush Holding Tank Rinsing System  
 Gravity and Pressurized Water Fill  
 Insulated Systems Compartment with Easy Access to Hook-Ups

Soap Dispenser inside Utility Bay  
 One-Piece Fiberglass Shower (N/A: 40PRQ)  
 Satin Aluminum Shower Door Frame with Decorative Glass

**OPTIONS**

RV Sani-Con Tank Drainage System (Replaced Sewer Storage)  
 Electric Automatic Winterization  
 Power Water Hose Reel (N/A: 40PRQ)  
 Exterior Tank Monitor Gauge in Wet Bay Bathtub

**HEATING, VENTS AND AIR CONDITIONING**

Dual 13.5M BTU Roof Air Conditioner with Ducted Air, Heat Pumps and Digital Thermostat Control  
 Electronic Ignition Furnace 1-40M BTU (38PDD)  
 Dual Zone Electronic Ignition Furnaces — 51M BTU: 31M BTU, 20M BTU (N/A: 38PDD)

Electronic Dash AC/Heat Climate Control System  
 In-Floor Ducted Heating System  
 Fantastic 12V Attic Fan with Rain Sensor with Electronic Wall Thermostat in Kitchen

12V Heater in Wet Bay  
 Metal Floor Registers Satin Nickel

**OPTIONS**

Fantastic 12V Attic Fan with Rain Sensor with Electronic Wall Thermostat in Bath

**WINDOWS, DOORS AND AWNINGS**

Radius Flush-Mount Dual Pane Safety Glass Dark Tinted Windows  
 Front Entry Door with Removable Screen and Anti-Skid Steps  
 Exterior Entry Door Grab Handle  
 Metal Interior Grab Handle on Dash at Entry Door

Eclipse Automatic Patio Awning  
 Topper Slide-Out Awnings Living Area and Bedroom (Carefree® with Metal Covers)  
 Automatic Front Door Awning  
 Tinted Skylight in Bathroom with Protecta Glaze

Window Awnings on All Slide-Out House Windows except Slide-Out Windows under Patio Awning

**OPTIONS**

Keyless Entry (Key Fob only)

**SAFETY**

Fire Extinguisher (10BC)  
 Deadbolt Lock on Entrance Door  
 120V GFI Protected Circuit (Kitchen, Bath, Exterior)

LP Gas Detector  
 Smoke Detector  
 Carbon Monoxide Detector

Driver and Passenger Three-Point Seat Belts (Wall-Mounted)  
 Third Brake Safety Light  
 Egress Window(s)

**ELECTRICAL SYSTEMS AND LIGHTS**

50 Amp 12V Distribution Panel and Power Cord  
 Onan® 8.0 kW Quiet Diesel Generator on Manual Slide-Out  
 Four 6V Deep Cycle Batteries  
 Two 12V Heavy-Duty Chassis Batteries  
 Battery Disconnect Switch at Front Door  
 Battery Boost Switch in Cockpit  
 2,000 Watt Inverter  
 Recessed Docking Lights  
 Porch Light and Exterior Step Light on Same Switch  
 Lighted Interior Steps  
 Lights in Outside Storage Compartments with Switch on Passenger Console and Utility Bay

110 Outlet in Outside Storage Compartment  
 Underhood Utility Light  
 Redesigned Convenience Center in Hallway  
 Fluorescent Light(s) under Kitchen Overhead  
 Fluorescent Ceiling Lights Throughout  
 Decorative Lighting Satin Nickel with Swirled Glass  
 Fluorescent Ceiling Lights inside Living Area Slide-Out House  
 Decorative Framed Longer Galley Fluorescent Ceiling Light  
 Energy Management System

Directional Map Lights on Bottom of Front TV Cabinet  
 Halogen Light on Driver and Passenger Overhead  
 Pre-Wire for Solar Panel  
 Halogen Lights under Living Room, Dining Room, Bed Overhead and Bedroom Dresser Overhead Cabinets

**OPTIONS**

Auto Generator Start  
 Solar Panel  
 Power Cord Reel

**PLUMBING AND LP SYSTEMS**

Demand Water System and Water Pump  
 10 Gallon LP Gas/Electric Water Heater with Electronic Ignition DSI Water Heater Located below Floor (N/A: 40PET)  
 10 Gallon LP Gas/Electric Water Heater with Electronic Ignition DSI Water Heater Located above Floor (40PET)  
 Single-Lever Kitchen Faucet with Pullout Sprayer  
 Separate Satin Nickel Faucet for Filtered Water  
 Satin Nickel Bathroom Faucet  
 Single-Handle Satin Nickel Shower Faucet with Slide Bar

Water Heater Bypass Valve  
 Water Pump Switch in Convenience Center, Kitchen Galley and Service Bay Area  
 Thetford China Toilet  
 Thetford China Toilet Electronic Thetford Silent Plus (40DST)  
 Shower inside Wet Bay with Hot/Cold Water  
 No-Fuss Flush Holding Tank Rinsing System  
 Gravity and Pressurized Water Fill  
 Insulated Systems Compartment with Easy Access to Hook-Ups

Soap Dispenser inside Utility Bay  
 One-Piece Fiberglass Shower (N/A: 40PRQ)  
 Satin Aluminum Shower Door Frame with Decorative Glass

**OPTIONS**

RV Sani-Con Tank Drainage System (Replaced Sewer Storage)  
 Electric Automatic Winterization  
 Power Water Hose Reel (N/A: 40PRQ)  
 Exterior Tank Monitor Gauge in Wet Bay Bathtub

**HEATING, VENTS AND AIR CONDITIONING**

Dual 13.5M BTU Roof Air Conditioner with Ducted Air, Heat Pumps and Digital Thermostat Control  
 Electronic Ignition Furnace 1-40M BTU (38PDD)  
 Dual Zone Electronic Ignition Furnaces — 51M BTU: 31M BTU, 20M BTU (N/A: 38PDD)

Electronic Dash AC/Heat Climate Control System  
 In-Floor Ducted Heating System  
 Fantastic 12V Attic Fan with Rain Sensor with Electronic Wall Thermostat in Kitchen

12V Heater in Wet Bay  
 Metal Floor Registers Satin Nickel

**OPTIONS**

Fantastic 12V Attic Fan with Rain Sensor with Electronic Wall Thermostat in Bath

**WINDOWS, DOORS AND AWNINGS**

Radius Flush-Mount Dual Pane Safety Glass Dark Tinted Windows  
 Front Entry Door with Removable Screen and Anti-Skid Steps  
 Exterior Entry Door Grab Handle  
 Metal Interior Grab Handle on Dash at Entry Door

Eclipse Automatic Patio Awning  
 Topper Slide-Out Awnings Living Area and Bedroom (Carefree® with Metal Covers)  
 Automatic Front Door Awning  
 Tinted Skylight in Bathroom with Protecta Glaze

Window Awnings on All Slide-Out House Windows except Slide-Out Windows under Patio Awning

**OPTIONS**

Keyless Entry (Key Fob only)

**SAFETY**

Fire Extinguisher (10BC)  
 Deadbolt Lock on Entrance Door  
 120V GFI Protected Circuit (Kitchen, Bath, Exterior)

LP Gas Detector  
 Smoke Detector  
 Carbon Monoxide Detector

Driver and Passenger Three-Point Seat Belts (Wall-Mounted)  
 Third Brake Safety Light  
 Egress Window(s)



## SIGNATURE SERIES

THE EXECUTIVE®

DYNASTY®

WINDSOR®

CAMELOT™

DIPLOMAT®

KNIGHT®

CAYMAN®

LAPALMA®

MONARCH SE®

ESQUIRE™

Welcome to the first step toward living your dream. You'll discover that it's not so far from here to there. Because Monaco has a coach that's right for every dreamer. Look closely, and you'll find the high-tech, high-style luxury you've dreamed about is also the very best deal under the sun. Point by point, in every price range, Monaco leads the way in performance, comfort and safety. Yes, you're headed for a dream come true. Just take your first step, and climb aboard.



91320 Coburg Industrial Way, Coburg, OR 97408  
800 634-0855

606 Nelson's Pkwy., Wakarusa, IN 46573  
800 650-7337

[www.monacocoach.com](http://www.monacocoach.com)

Monaco Coach Corporation is traded on the NYSE under the listing MNC.  
0805 NPN: BROMDIP



## SIGNATURE SERIES

THE EXECUTIVE<sup>®</sup>

DYNASTY<sup>®</sup>

WINDSOR<sup>®</sup>

CAMELOT<sup>™</sup>

DIPLOMAT<sup>®</sup>

KNIGHT<sup>®</sup>

CAYMAN<sup>®</sup>

LAPALMA<sup>®</sup>

MONARCH SE<sup>®</sup>

ESQUIRE<sup>™</sup>

Welcome to the first step toward living your dream. You'll discover that it's not so far from here to there. Because Monaco has a coach that's right for every dreamer. Look closely, and you'll find the high-tech, high-style luxury you've dreamed about is also the very best deal under the sun. Point by point, in every price range, Monaco leads the way in performance, comfort and safety. Yes, you're headed for a dream come true. Just take your first step, and climb aboard.



91320 Coburg Industrial Way, Coburg, OR 97408  
800 634-0855

606 Nelson's Pkwy., Wakarusa, IN 46573  
800 650-7337

[www.monacocoach.com](http://www.monacocoach.com)

Monaco Coach Corporation is traded on the NYSE under the listing MNC.  
0805 NPN: BROMDIP