



MONACO<sup>®</sup>

DRIVING YOUR DREAM.

2006 KNIGHT<sup>®</sup>





MONACO®

DRIVING YOUR DREAM.

2006 KNIGHT®



THE PRESTIGE OF A MONACO.  
IN A VALUE THAT CAN'T BE BEAT.

The legendary quality, performance and style of a Monaco turns heads in admiration from coast to coast. And owning one for yourself is as easy as the 2006 Knight. We invite you to compare its Roadmaster chassis, its remarkable collection of features and our unsurpassed owner support with that of any other coach. You'll see that in fact, a Monaco will also turn your head with its unbeatable value. We cordially welcome you to climb aboard.

An exciting development this year is the new ceiling height — we've raised it to a full 7 feet — for more spaciousness than ever before.

Allow us to point out some distinctive details that make this a Monaco interior. Raised panel hardwood cabinet doors and refrigerator inserts. Crown molding. Decorative hardwood-accented slide-out fascia. Decorative antique brass lighting and cabinet hardware. And beautiful textured, padded carpeting.

- 1 Style meets convenience in the galley, with its sleek, **polished solid surface radius countertop** and an **under-mounted plexus-stone sink**. A handy **separate faucet** provides filtered water, and a **combination convection/microwave oven** puts many cooking functions right at your fingertips. *(40PLQ, Champagne Select, Basil Leaf)*
- 2 The roomy bedroom features a **queen bed**, **nightstands with hardwood tops**, and a **20" TV** tucked in the overhead cabinets. A **pillow top mattress** makes an excellent option, as does the **king bed**, available in the 40PDQ. The 40PLQ (shown here) also pampers you with a beautiful **bench seat**, **fabric barrel chair** and **new style desk chair**. *(40PLQ, Champagne Select, Basil Leaf)*
- 3 While the **booth dinette** (shown here) is standard, you may also choose an optional **freestanding dinette** with a **full-length wall cabinet**, **two newly styled freestanding chairs** and **two handy folding chairs**. *(40PLQ, Champagne Select, Basil Leaf)*
- 4 In the bathroom, you'll enjoy the residential styling of the **shower** with an **antique brass frame** and **decorative glass enclosure**, as well as a **radius solid surface countertop with an integrated sink**. *(40PLQ, Champagne Select, Basil Leaf)*



THE PRESTIGE OF A MONACO.  
IN A VALUE THAT CAN'T BE BEAT.

The legendary quality, performance and style of a Monaco turns heads in admiration from coast to coast. And owning one for yourself is as easy as the 2006 Knight. We invite you to compare its Roadmaster chassis, its remarkable collection of features and our unsurpassed owner support with that of any other coach. You'll see that in fact, a Monaco will also turn your head with its unbeatable value. We cordially welcome you to climb aboard.

An exciting development this year is the new ceiling height — we've raised it to a full 7 feet — for more spaciousness than ever before.

Allow us to point out some distinctive details that make this a Monaco interior. Raised panel hardwood cabinet doors and refrigerator inserts. Crown molding. Decorative hardwood-accented slide-out fascia. Decorative antique brass lighting and cabinet hardware. And beautiful textured, padded carpeting.

- 1 Style meets convenience in the galley, with its sleek, **polished solid surface radius countertop** and an **under-mounted plexus-stone sink**. A handy **separate faucet** provides filtered water, and a **combination convection/microwave oven** puts many cooking functions right at your fingertips. *(40PLQ, Champagne Select, Basil Leaf)*
- 2 The roomy bedroom features a **queen bed, nightstands with hardwood tops**, and a **20" TV** tucked in the overhead cabinets. A **pillow top mattress** makes an excellent option, as does the **king bed**, available in the 40PDQ. The 40PLQ (shown here) also pampers you with a beautiful **bench seat, fabric barrel chair** and **new style desk chair**. *(40PLQ, Champagne Select, Basil Leaf)*
- 3 While the **booth dinette** (shown here) is standard, you may also choose an optional **freestanding dinette** with a **full-length wall cabinet, two newly styled freestanding chairs** and **two handy folding chairs**. *(40PLQ, Champagne Select, Basil Leaf)*
- 4 In the bathroom, you'll enjoy the residential styling of the **shower** with an **antique brass frame** and **decorative glass enclosure**, as well as a **radius solid surface countertop with an integrated sink**. *(40PLQ, Champagne Select, Basil Leaf)*









 PANAVIEW™

1-PIECE WINDSHIELD

Our exclusive Panaview™ 1-piece windshield gives you the largest, and safest, unobstructed view of the road ahead. The wipers are discreetly mounted below your sightline, and the side pillars are more slender, for a wraparound effect.





 PANAVIEW™

1-PIECE WINDSHIELD



Our exclusive Panaview™ 1-piece windshield gives you the largest, and safest, unobstructed view of the road ahead. The wipers are discreetly mounted below your sightline, and the side pillars are more slender, for a wraparound effect.



## YOUR FRONT ROW SEAT TO THE BEST PERFORMANCE ON THE ROAD.

At the helm of the Knight, you'll take control of the incomparable Roadmaster chassis and its powerful Cummins® engine. And all the while, you'll know you're in one of the safest coaches in the industry, thanks to the steel cage cockpit construction and steel firewall. Yes, with the attractive dash, easy-to-read gauges and ergonomically organized switches and controls, you're in the best seat in the house.

To the right of the steering wheel, you'll find the monitor for the rear vision system with audio and an adjustable camera. The optional Aladdin™ Junior system also displays its many functions here. And, for an expanded view, you have the option of a 3-camera rear vision system with two additional side cameras.

The adjustable brake and accelerator pedals ensure that drivers of all heights have optimum comfort and control.

- 1 Driving or parked, you'll enjoy the comfort of **soft touch vinyl cockpit seats (OptimaLeather™ in the Ralph Lauren Hampstead Lane sport decor)**. Both seats feature **six-way power controls**, and the co-pilot's has a **power footrest**. Above the cockpit are cabinets for the **24" TV** and **home theater system** with **VCR/DVD player** and **surround sound speakers**. The coach is also prepped for an optional **digital satellite system**. (40PLQ, Champagne Select, Basil Leaf)





## YOUR FRONT ROW SEAT TO THE BEST PERFORMANCE ON THE ROAD.

At the helm of the Knight, you'll take control of the incomparable Roadmaster chassis and its powerful Cummins® engine. And all the while, you'll know you're in one of the safest coaches in the industry, thanks to the steel cage cockpit construction and steel firewall. Yes, with the attractive dash, easy-to-read gauges and ergonomically organized switches and controls, you're in the best seat in the house.

To the right of the steering wheel, you'll find the monitor for the rear vision system with audio and an adjustable camera. The optional Aladdin™ Junior system also displays its many functions here. And, for an expanded view, you have the option of a 3-camera rear vision system with two additional side cameras.

The adjustable brake and accelerator pedals ensure that drivers of all heights have optimum comfort and control.

- 1 Driving or parked, you'll enjoy the comfort of **soft touch vinyl cockpit seats (OptimaLeather™ in the Ralph Lauren Hampstead Lane sport decor)**. Both seats feature **six-way power controls**, and the co-pilot's has a **power footrest**. Above the cockpit are cabinets for the **24" TV** and **home theater system** with **VCR/DVD player** and **surround sound speakers**. The coach is also prepped for an optional **digital satellite system**. (40PLQ, Champagne Select, Basil Leaf)





ROADMASTER RR8R RAISED RAIL CHASSIS

**A** The Knight features Monaco's exclusive Alumaframe® Superstructure. Our revolutionary system of aluminum C-Channel crossmembers runs the entire length of the unit, with double-welded intersections for added strength. This rigid design is both lighter and sturdier than wood or tubular aluminum frames — and much more reliable than butt-welded or screwed joint designs. From dirt roads to potholes, you can count on Alumaframe® to handle the relentless stresses of the road and provide superior structural integrity for many years to come.



Wood

Aluminum  
(Butt-Welded)Alumaframe®  
(C-Channel)

**B** A steel cage cockpit gives the Roadmaster chassis incomparable strength and safety in the front of the coach.

**C** Every Roadmaster chassis features a steel firewall for added protection in the cockpit.

**D** The main rails feature an exclusive raised rail design which provides for larger full pass-through storage bays with flush floors. Other highlights include a 3/8" thick frame rail — compared to the 1/4" of other manufacturers — and a stacked aluminum intercooler and radiator for optimum heat transfer and cooling.

**E** Dual fuel fill allows you to fill the tank from either side of the coach, for greater convenience and flexibility at the pump.

**F** This steel truss system is engineered as part of the chassis and provides outstanding strength and rigidity plus pass-through storage. In addition, the structure is pre-primed and coated with a rust-inhibiting paint.

**G** Eight air bags work in conjunction with eight gas-powered shock absorbers to prevent road trauma from ever reaching the coach.

Monitored leveling sensors continually adjust the air pressure at each axle to maintain a level ride and eliminate nosediving, weight transfer, and floating on curved roads. This system also stabilizes the coach on uneven surfaces.

**H** Automatic Traction Control (ATC) eliminates wheel slippage in slick conditions and heightens control. The Anti-Lock Braking System (ABS) gives you superior stopping power, especially on steep grades. Together, these sophisticated systems offer the very best safety on the road.

**I** The Knight features a gutsy standard Cummins® ISC 330 diesel engine with Allison® 3000 MH 6-speed World Transmission and electronic shifter.

The three-point engine mounting system lowers the coach's center of gravity and reduces the amount of vibration that reaches the coach. The mounting also makes the engine easier to service.

A 10,000 lb. tow hitch rating is the highest in its class.



#### OUTBOARD AIR BAG SUSPENSION

The outboard-mounted air bags are protected by two steel plates and are placed farther apart than the competition, providing a wider and more stable platform for the coach. The active suspension automatically adjusts the pressure of the air bags as you drive and virtually eliminates nose-diving and the side-to-side body sway associated with high wind conditions, curvy roads and emergency maneuvers.





ROADMASTER RR8R RAISED RAIL CHASSIS

**A** The Knight features Monaco's exclusive Alumaframe® Superstructure. Our revolutionary system of aluminum C-Channel crossmembers runs the entire length of the unit, with double-welded intersections for added strength. This rigid design is both lighter and sturdier than wood or tubular aluminum frames — and much more reliable than butt-welded or screwed joint designs. From dirt roads to potholes, you can count on Alumaframe® to handle the relentless stresses of the road and provide superior structural integrity for many years to come.



Wood

Aluminum (Butt-Welded)

Alumaframe® (C-Channel)

**B** A steel cage cockpit gives the Roadmaster chassis incomparable strength and safety in the front of the coach.

**C** Every Roadmaster chassis features a steel firewall for added protection in the cockpit.

**D** The main rails feature an exclusive raised rail design which provides for larger full pass-through storage bays with flush floors. Other highlights include a 3/8" thick frame rail — compared to the 1/4" of other manufacturers — and a stacked aluminum intercooler and radiator for optimum heat transfer and cooling.

**E** Dual fuel fill allows you to fill the tank from either side of the coach, for greater convenience and flexibility at the pump.

**F** This steel truss system is engineered as part of the chassis and provides outstanding strength and rigidity plus pass-through storage. In addition, the structure is pre-primed and coated with a rust-inhibiting paint.

**G** Eight air bags work in conjunction with eight gas-powered shock absorbers to prevent road trauma from ever reaching the coach.

Monitored leveling sensors continually adjust the air pressure at each axle to maintain a level ride and eliminate nosediving, weight transfer, and floating on curved roads. This system also stabilizes the coach on uneven surfaces.

**H** Automatic Traction Control (ATC) eliminates wheel slippage in slick conditions and heightens control. The Anti-Lock Braking System (ABS) gives you superior stopping power, especially on steep grades. Together, these sophisticated systems offer the very best safety on the road.

**I** The Knight features a gutsy standard Cummins® ISC 330 diesel engine with Allison® 3000 MH 6-speed World Transmission and electronic shifter.

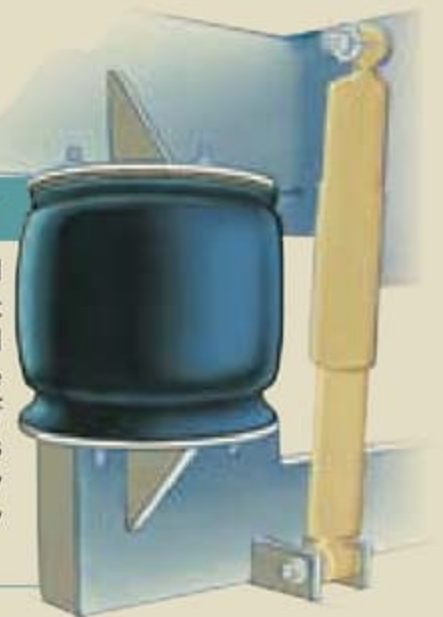
The three-point engine mounting system lowers the coach's center of gravity and reduces the amount of vibration that reaches the coach. The mounting also makes the engine easier to service.

A 10,000 lb. tow hitch rating is the highest in its class.



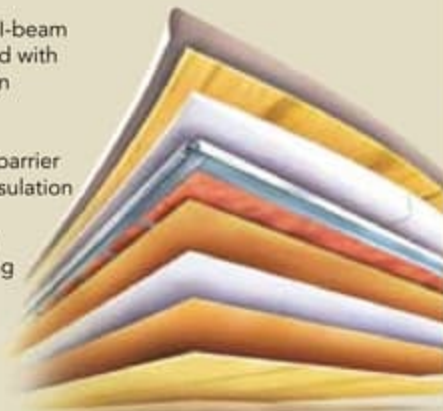
### OUTBOARD AIR BAG SUSPENSION

The outboard-mounted air bags are protected by two steel plates and are placed farther apart than the competition, providing a wider and more stable platform for the coach. The active suspension automatically adjusts the pressure of the air bags as you drive and virtually eliminates nose-diving and the side-to-side body sway associated with high wind conditions, curvy roads and emergency maneuvers.



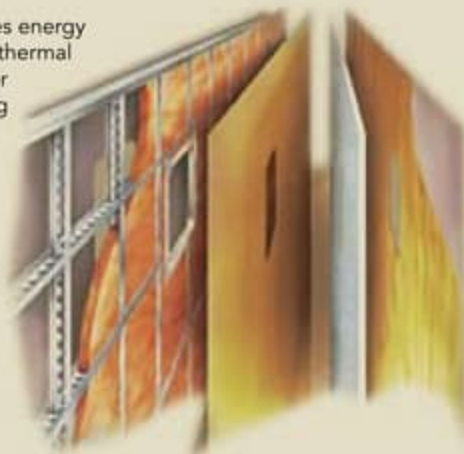
**ROOF CONSTRUCTION:** (top to bottom)

- One-piece peaked fiberglass roof
- Luau backing
- Thick, tapered bead foam insulation
- Aluminum double I-beam superstructure filled with fiberglass insulation
- Vapor barrier
- Structure foam: thermal insulative barrier
- 1/2" bead foam insulation
- Foam padding for extra insulation
- Padded vinyl ceiling



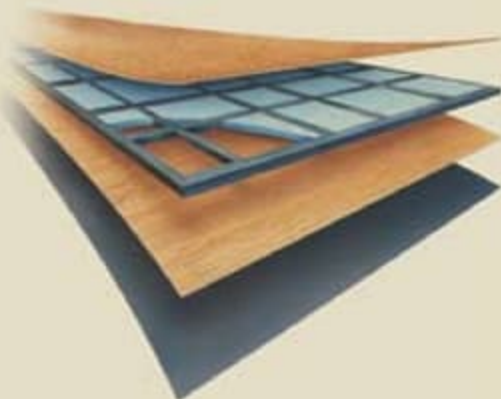
**SIDEWALL CONSTRUCTION:** (left to right)

- High-gloss gel coat fiberglass
- Interlocking C-Channel filled with 1-1/2" fiberglass insulation glued in place so it doesn't sag or leave spaces uninsulated
- Vapor barrier
- Bead foam saves energy and provides a thermal insulative barrier
- Interior paneling



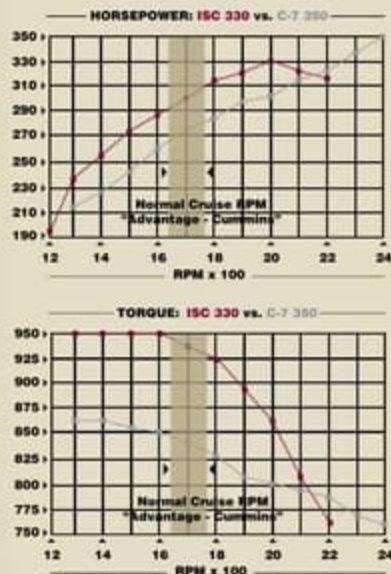
**FLOOR CONSTRUCTION:** (bottom to top)

- Darco
- Luau
- Blue foam
- 1-1/2" tube
- Structurwood™



**OUR PHILOSOPHY: DO ONE THING,  
AND DO IT BETTER THAN ANYONE.**

The quality of your coach all starts with the chassis on which it's built. Everything from safety and reliability to performance and convenience begin with the chassis you're driving. A division of Monaco Coach Corporation, Roadmaster is the leading high-end diesel chassis manufacturer — because that's all we do. Yes, we have a 100% commitment to producing only chassis for motorhomes. And that's something no other chassis manufacturer can say.



The 2006 Knight is powered by a Cummins® ISC 330 HP engine — engineered to give you maximum torque at the RPM where you need it most.



You'll enjoy a full package of high quality awnings, including an Eclipse automatic patio awning.

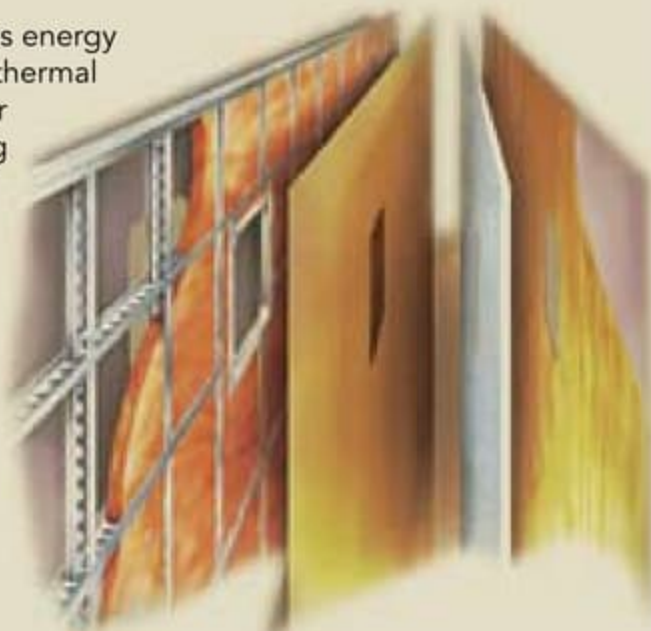
ROOF CONSTRUCTION: (top to bottom)

- One-piece peaked fiberglass roof
- Luaun backing
- Thick, tapered bead foam insulation
- Aluminum double I-beam superstructure filled with fiberglass insulation
- Vapor barrier
- Structure foam: thermal insulative barrier
- 1/2" bead foam insulation
- Foam padding for extra insulation
- Padded vinyl ceiling



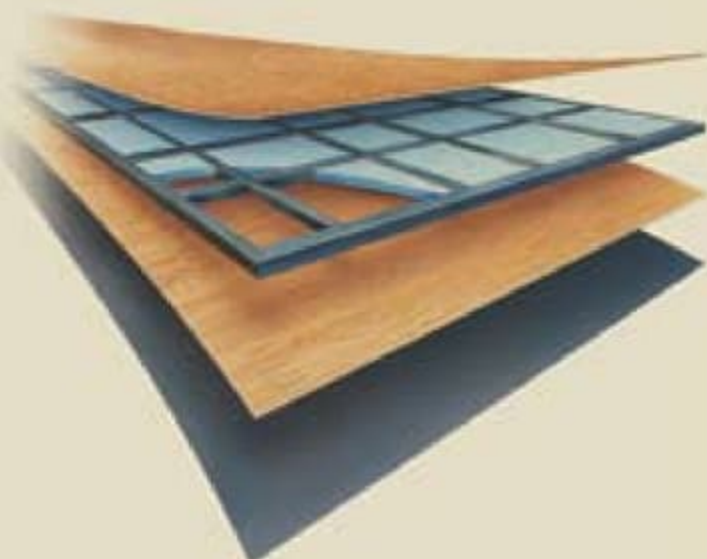
SIDEWALL CONSTRUCTION: (left to right)

- High-gloss gel coat fiberglass
- Interlocking C-Channel filled with 1-1/2" fiberglass insulation glued in place so it doesn't sag or leave spaces uninsulated
- Vapor barrier
- Bead foam saves energy and provides a thermal insulative barrier
- Interior paneling



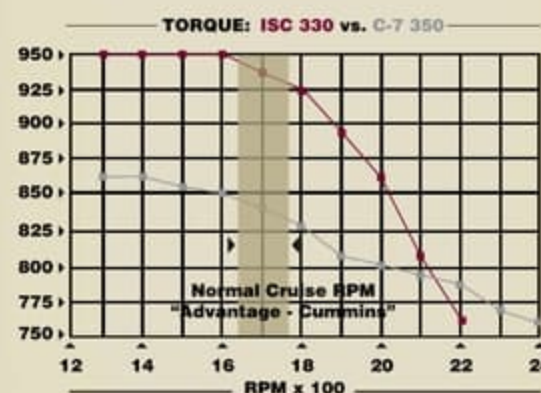
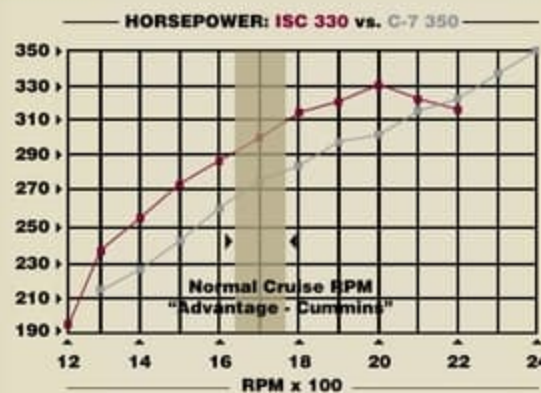
FLOOR CONSTRUCTION: (bottom to top)

- Darco
- Luaun
- Blue foam
- 1-1/2" tube
- Structurwood™



OUR PHILOSOPHY: DO ONE THING,  
AND DO IT BETTER THAN ANYONE.

The quality of your coach all starts with the chassis on which it's built. Everything from safety and reliability to performance and convenience begin with the chassis you're driving. A division of Monaco Coach Corporation, Roadmaster is the leading high-end diesel chassis manufacturer — because that's all we do. Yes, we have a 100% commitment to producing only chassis for motorhomes. And that's something no other chassis manufacturer can say.





The 2006 Knight is powered by a Cummins® ISC 330 HP engine — engineered to give you maximum torque at the RPM where you need it most.



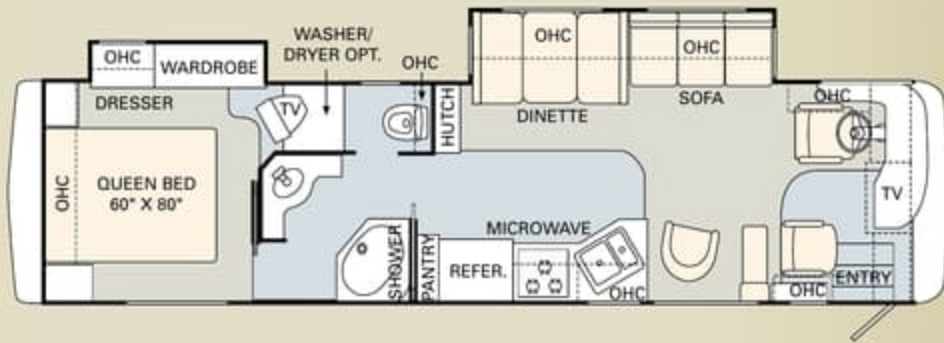
You'll enjoy a full package of high quality awnings, including an Eclipse automatic patio awning.

The 2006 Knight is available in a remarkable selection of innovative floorplans ranging from 37' to 40', with double, triple and quad slide-outs. No matter which one you choose, you'll enjoy more livable interior space and more easy-to-reach storage than any other manufacturer has to offer.

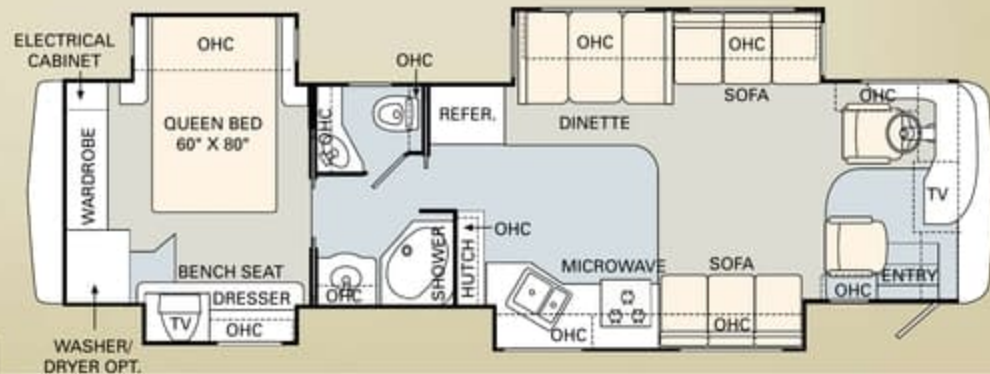
 TILE/LAMINATE     CARPET

**Furniture Options:**

- Curbside: OptimaLeather™ Sleeper Sofa with Two Pillows
- Curbside: Computer Workstation with 27" LCD TV and OptimaLeather™ Euro-Recliner with Ottoman, Heat and Massage (N/A: 37PBD, 40PLQ)
- King Bed with One Nightstand (40PDQ)
- Freestanding Dinette with Full-Length Wall Cabinet, Two New Style Freestanding Chairs and Two Folding Chairs (N/A: 40PET)
- Bathtub



37PBD



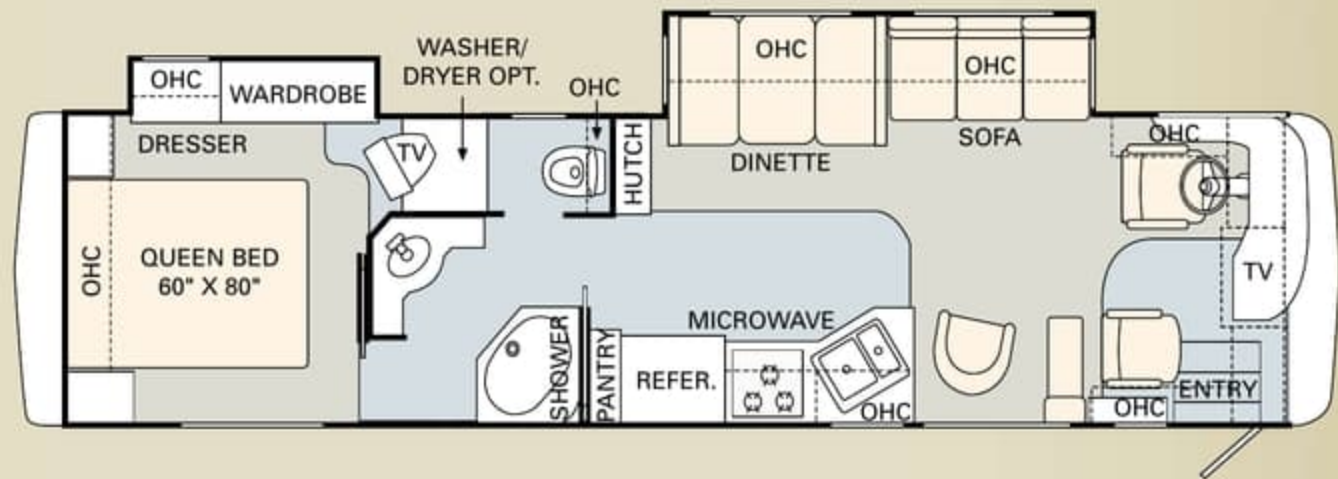
38PDQ

The 2006 Knight is available in a remarkable selection of innovative floorplans ranging from 37' to 40', with double, triple and quad slide-outs. No matter which one you choose, you'll enjoy more livable interior space and more easy-to-reach storage than any other manufacturer has to offer.

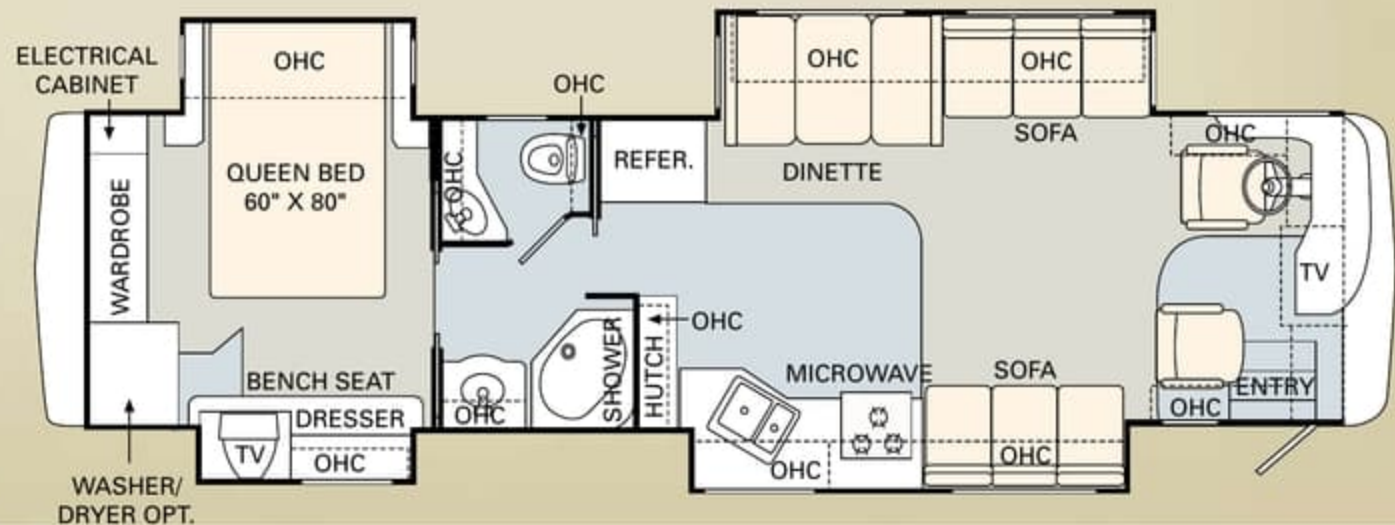
 TILE/LAMINATE       CARPET

**Furniture Options:**

- Curbside: OptimaLeather™ Sleeper Sofa with Two Pillows
- Curbside: Computer Workstation with 27" LCD TV and OptimaLeather™ Euro-Recliner with Ottoman, Heat and Massage (N/A: 37PBD, 40PLQ)
- King Bed with One Nightstand (40PDQ)
- Freestanding Dinette with Full-Length Wall Cabinet, Two New Style Freestanding Chairs and Two Folding Chairs (N/A: 40PET)
- Bathtub

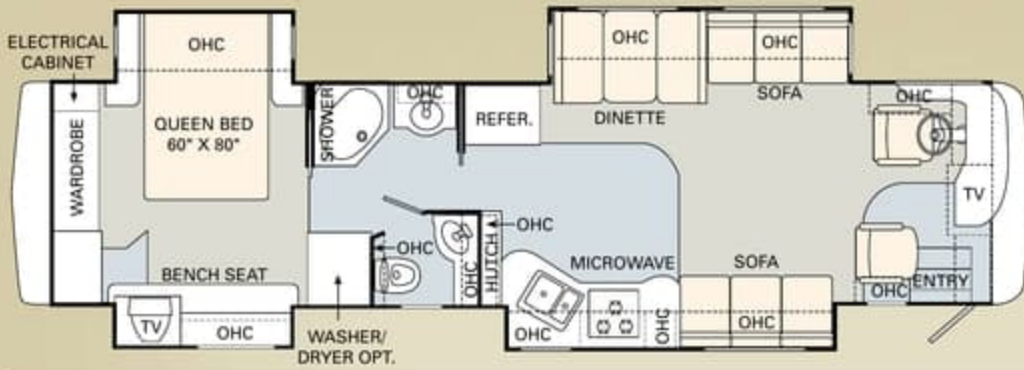


37PBD

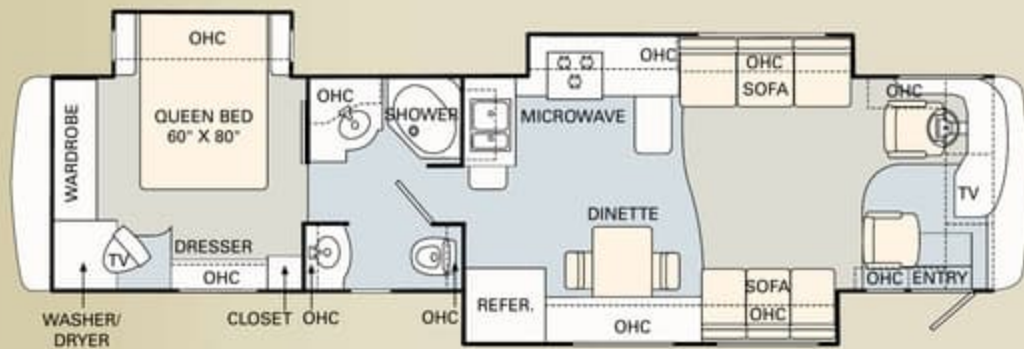


38PDQ





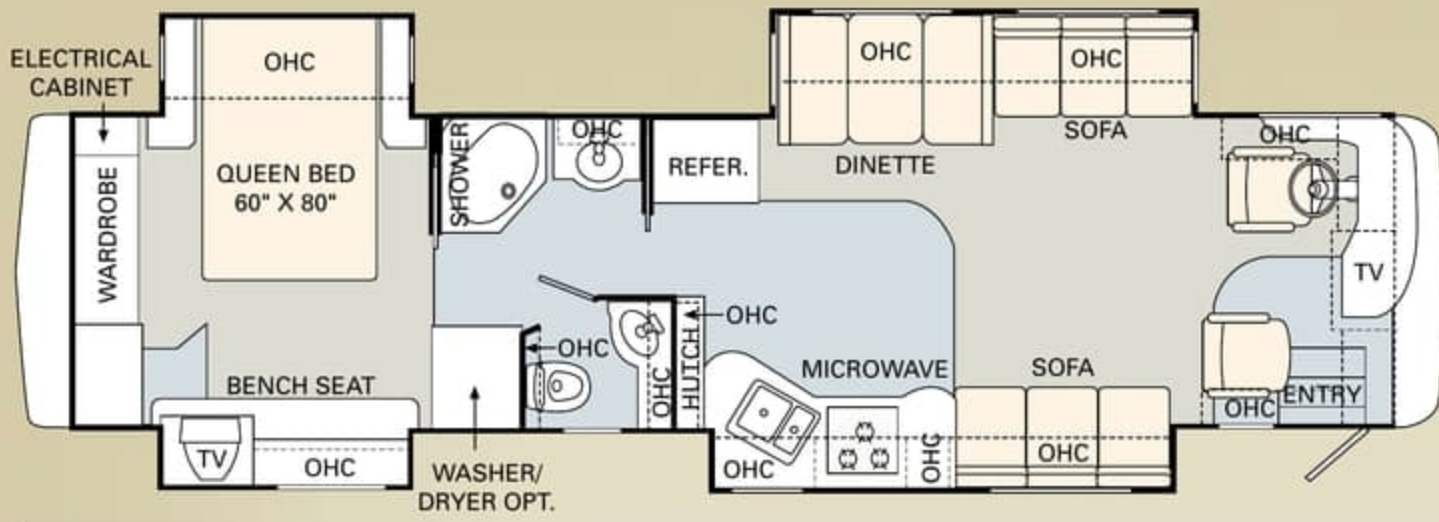
40PDO



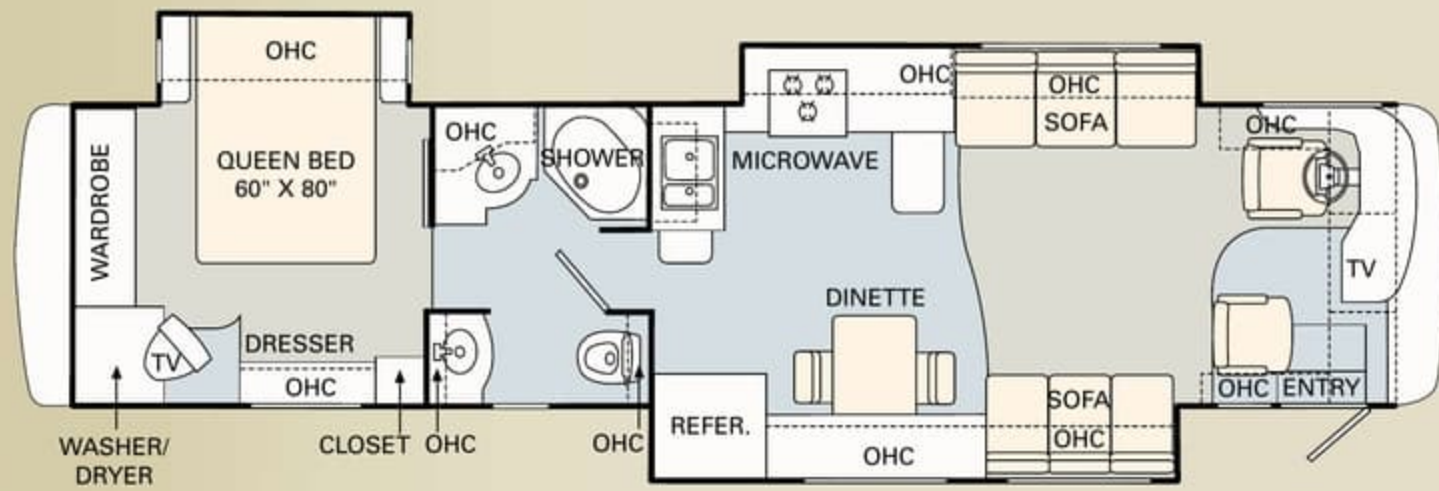
40PET



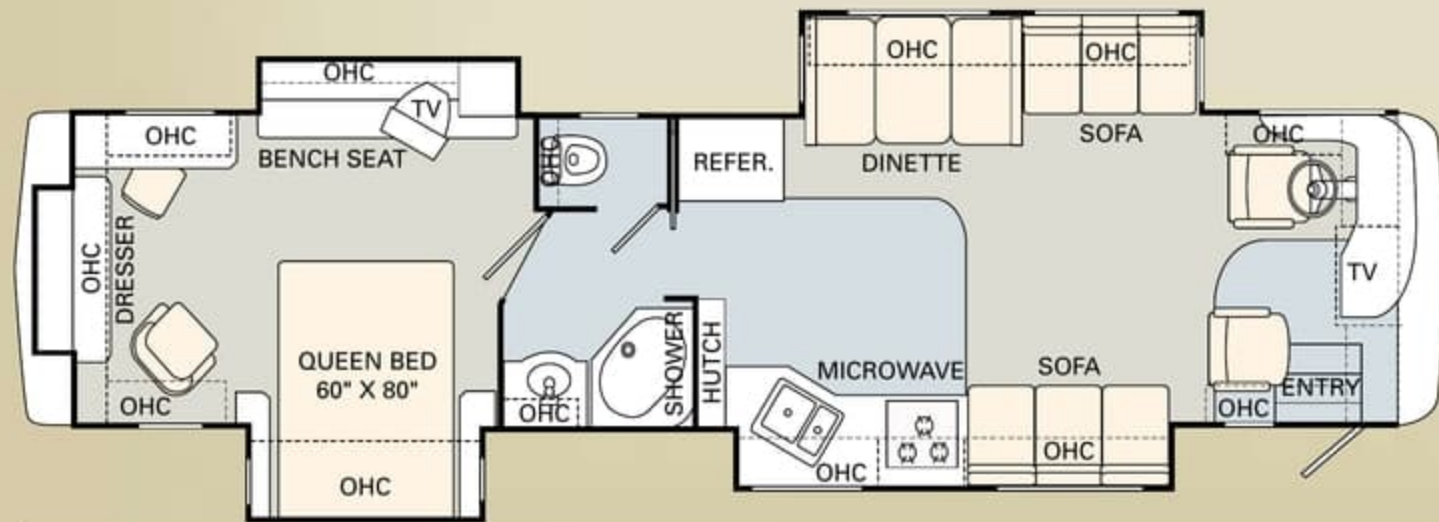
40PLQ



40PDQ



40PET




40PLQ

When you think Monaco, you think impeccable styling. And 2006 is no exception. No matter where your tastes lie — from traditional to contemporary, conservative to bold — we give you more ways to turn your motorhome into your dream home. The Knight is proud to offer the Hampstead Lane Sport Decor by Ralph Lauren.

Note: Colors depicted are a reasonable representation though they may not be an exact match of the actual colors due to variances in processing and production. See your dealer for actual fabric and paint chip samples.

**Better Stain Protection**

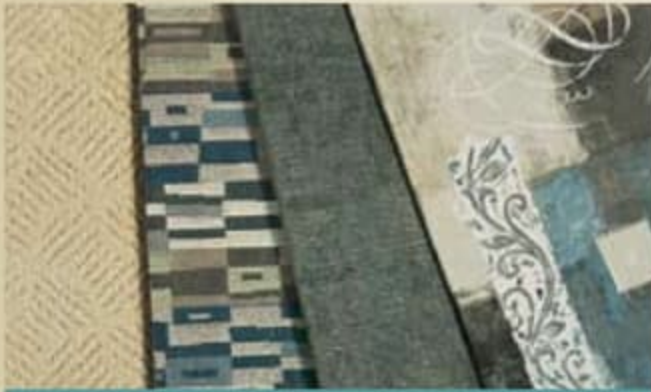


Manufactured in, not added on. For added protection against stains, soil repellent is applied to virtually all upholstery fabric during the finishing process for superior coverage.\*

\* Brand and application of upholstery fabric protection may vary depending on date recreational vehicle was manufactured.



- A Carpet
- B Dinette
- C Sofa
- D Bedspread



BASIL LEAF



ESPRESSO II



NEW VINTAGE OAK



NEWPORT CHERRY



CHAMPAGNE SELECT

When you think Monaco, you think impeccable styling. And 2006 is no exception. No matter where your tastes lie — from traditional to contemporary, conservative to bold — we give you more ways to turn your motorhome into your dream home. The Knight is proud to offer the Hampstead Lane Sport Decor by Ralph Lauren.

Note: Colors depicted are a reasonable representation though they may not be an exact match of the actual colors due to variances in processing and production. See your dealer for actual fabric and paint chip samples.

Better Stain Protection



Manufactured in, not added on. For added protection against stains, soil repellent is applied to virtually all upholstery fabric during the finishing process for superior coverage.\*

\*Brand and application of upholstery fabric protection may vary depending on date recreational vehicle was manufactured.



- A Carpet
- B Dinette
- C Sofa
- D Bedspread



BASIL LEAF



ESPRESSO II



NEW VINTAGE OAK



NEWPORT CHERRY



CHAMPAGNE SELECT

**WE'RE NEVER MORE THAN A CLICK AWAY.**

A great way to get the latest product news and updates is by visiting our website at [monacocoach.com](http://monacocoach.com). The site includes many features, including factory tours, a dealer locator function and information on scheduled club events. Plus, through the site, you may contact us directly at any time.

[www.monacocoach.com](http://www.monacocoach.com)



ONYX II



RALPH LAUREN HAMPSTEAD LANE SPORT



**THERE'S STRENGTH IN OUR NUMBERS.**

As you consider your RV purchase, there's one thing we'd like you to keep in mind: Nobody does customer service like Monaco. Period. Our staff is available 24/7/365 to help you with virtually any situation that may arise — with troubleshooting, operational instruction or facilitating repairs at the nearest of our 350 nationwide service centers. In addition, you'll be enrolled in our Owner Advantage Roadside Assistance Program free of charge for your first year of ownership — providing additional emergency assistance, including towing, tire repairs and many more services around the clock. In short, when you purchase an RV from Monaco Coach Corporation, you get a wider array of benefits than any other manufacturer can offer. To see it all for yourself, call 1-800-634-0855 or 1-800-650-7337 to arrange a tour of one of our state-of-the-art production facilities in Oregon or Indiana.

**WARRANTIES**

**12 month/24,000 mile**  
basic limited warranty

**5 year/50,000 mile**  
limited warranty on aluminum or steel frame structure of sidewall, roof, front and rear cap

**3 year/36,000 mile**  
limited warranty on Roadmaster chassis

Applies to certain models. See owner's manual for complete details.

**WE'RE NEVER MORE THAN A CLICK AWAY.**

A great way to get the latest product news and updates is by visiting our website at [monacocoach.com](http://monacocoach.com). The site includes many features, including factory tours, a dealer locator function and information on scheduled club events. Plus, through the site, you may contact us directly at any time.



[www.monacocoach.com](http://www.monacocoach.com)



ONYX II



RALPH LAUREN HAMPSTEAD LANE SPORT



**THERE'S STRENGTH IN OUR NUMBERS.**

As you consider your RV purchase, there's one thing we'd like you to keep in mind: Nobody does customer service like Monaco. Period. Our staff is available 24/7/365 to help you with virtually any situation that may arise — with troubleshooting, operational instruction or facilitating repairs at the nearest of our 350 nationwide service centers. In addition, you'll be enrolled in our Owner Advantage Roadside Assistance Program free of charge for your first year of ownership — providing additional emergency assistance, including towing, tire repairs and many more services around the clock. In short, when you purchase an RV from Monaco Coach Corporation, you get a wider array of benefits than any other manufacturer can offer. To see it all for yourself, call 1-800-634-0855 or 1-800-650-7337 to arrange a tour of one of our state-of-the-art production facilities in Oregon or Indiana.

**WARRANTIES**

**12 month/24,000 mile**  
basic limited warranty

**5 year/50,000 mile**  
limited warranty on aluminum or steel frame structure of sidewall, roof, front and rear cap

**3 year/36,000 mile**  
limited warranty on Roadmaster chassis

Applies to certain models. See owner's manual for complete details.

	Weight Ratings (Lbs.)				Measurements	Tank Capacity (Gal.) <sup>2)</sup>										
	Gross Vehicle	Gross Combined <sup>1)</sup>	Front Gross Axle	Rear Gross Axle		Wheelbase	Overall Length	Overall Height (with A/C) (add 5" for satellite option)	Interior Height	Interior Width	Exterior Width	Water Heater	Gray Tank	Black Tank	Fresh Tank	LP Tank <sup>3)</sup>
<b>37PBD</b>	33,000	43,000	13,000	20,000	225"	37' 10"	12' 6"	84"	94.5"	100.5"	10	60	40	100	40	100
<b>38PDQ</b>	33,000	43,000	13,000	20,000	237"	38' 10"	12' 6"	84"	94.5"	100.5"	10	60	40	100	40	100
<b>40PDQ</b>	33,000	43,000	13,000	20,000	261"	40' 10"	12' 6"	84"	94.5"	100.5"	10	60	40	100	40	100
<b>40PET</b>	33,000	43,000	13,000	20,000	261"	40' 10"	12' 6"	84"	94.5"	100.5"	10	60	40	100	40	100
<b>40PLQ</b>	33,000	43,000	13,000	20,000	261"	40' 10"	12' 6"	84"	94.5"	100.5"	10	60	40	100	40	100

- 1 Towing capacity is limited by GCWR; your vehicle's towing capacity is the difference between the GCWR and the actual vehicle weight, including all water, fuel, passengers and cargo. Your towed vehicle should be equipped with auxiliary brakes if the weight of the towed vehicle exceeds 1,000 lbs. Consult your owner's manual for further towing information.
- 2 All tank capacities are estimated based upon calculations provided by the tank manufacturers and represent approximate capacities. The actual "usable capacity" may be greater or less than the estimated capacities based upon fabrication and installation of the tanks.
- 3 Actual filled LP capacity is 80% of listing due to safety shut-off required on tank.

The actual overall length of the recreational vehicle may differ from that indicated in the brochure due to variances in the manufacturing process and/or installed components. The actual length may be greater or less than that indicated. Due to the large variety of options and floorplan arrangements available to our customers, actual weights for each unit can differ significantly. Monaco Coach provides a weight sticker on each unit we produce which includes that unit's tank capacities and approximate weight. Consult your local Monaco Coach dealer for unit availability and further information. The information printed in this brochure reflects product design, fabrication, and component parts at the date of printing. The manufacturer reserves the right, at any time, to make changes in product design or material or component specifications as its sole option, without notice. This includes the substitution of components of a different brand or trade name which will result in comparable performance. All information printed in this brochure is subject to change after the date of printing. Some features shown or mentioned in this brochure are optional and may only be available in selected floorplans. Photographs may show props or decorations that are not standard equipment on Monaco Coach models. Monaco Coach, the Monaco logo and its design, are registered trademarks. All other products and company names are trademarks and/or registered trademarks of their respective holders. While the color of the motorhome's exterior and the interior fabrics depicted in this sales brochure are fair and reasonable depictions, the colors depicted may not be an exact match of the actual colors because of the variances in photo-processing and variances caused by inserting the photographs within the sales brochure. Due to product improvements, changes during the model year and/or transcription errors that may occur, information represented within this brochure may not be accurate at the time of your purchase. If certain information is significant to your purchasing decision, please confirm the information with your dealer prior to submitting your order. Component part and appliance manufacturers issue limited warranties covering those portions of the recreational vehicle not covered by the Limited Warranties issued by Monaco Coach Corporation. To learn which specific component parts and appliances are excluded from the Limited Warranties issued by Monaco Coach Corporation, please contact your selling dealership or Monaco Coach Corporation directly, or review the warranty packet inside the recreational vehicle.

## BODY CONSTRUCTION

Alumaframe® Superstructure  
 Steel Cage Cockpit Construction  
 Peaked One-Piece Fiberglass Roof with Fiberglass Insulation  
 Smooth Gel Coat Fiberglass Exterior Walls  
 Front and Rear Molded Fiberglass Caps  
 One-Piece Front Windshield  
 Interior Height 84"  
 One-Piece Generator Access Door  
 Rear Engine Doors with Struts  
 Fiberglass Engine Cover  
 Steel Framed Floor on Steel Trusses  
 Laminated Structurwood™ Flooring  
 Electric Flush-Floor Stepwell Cover  
 Interior Paneling with 3/4" Insulation

Foam Insulated Floor Framing with Luaun Backer  
 17.5" Chrome Power Heated Remote Mirrors  
 Headlamp with Turn Signal  
 Fog Lights  
 Flush-Mount Metal Fuel Doors  
 30" Deep Bedroom Slide-Outs  
 Side-Hinged Baggage Doors with Redesigned Extrusion and Latch Locations  
 One-Piece Polyethylene Pass-Through Storage Compartment  
 Wheel Mud Flaps  
 Full-Length Mud Flaps  
 3M Film Front Mask

Deluxe Full-Body Paint  
 Roof Ladder  
 Undercoating

### OPTIONS

Standard Run Savings Package  
 Includes: 3-Camera Rear Vision System with Audio and Adjustable Center Camera, Pillow Top Mattress, Exterior Tank Monitor Gauge  
 Storage Bay Slide-Out Tray, Pass-Through Slide-Out Battery Tray

	Weight Ratings (Lbs.)				Measurements	Measurements						Tank Capacity (Gal.) <sup>2</sup>					
	Gross Vehicle	Gross Combined <sup>1</sup>	Front Gross Axle	Rear Gross Axle		Wheelbase	Overall Length	Overall Height (with A/C) (add 5" for satellite option)	Interior Height	Interior Width	Exterior Width	Water Heater	Gray Tank	Black Tank	Fresh Tank	LP Tank <sup>3</sup>	Fuel Tank
<b>37PBD</b>	33,000	43,000	13,000	20,000	225"	37' 10"	12' 6"	84"	94.5"	100.5"	10	60	40	100	40	100	
<b>38PDQ</b>	33,000	43,000	13,000	20,000	237"	38' 10"	12' 6"	84"	94.5"	100.5"	10	60	40	100	40	100	
<b>40PDQ</b>	33,000	43,000	13,000	20,000	261"	40' 10"	12' 6"	84"	94.5"	100.5"	10	60	40	100	40	100	
<b>40PET</b>	33,000	43,000	13,000	20,000	261"	40' 10"	12' 6"	84"	94.5"	100.5"	10	60	40	100	40	100	
<b>40PLQ</b>	33,000	43,000	13,000	20,000	261"	40' 10"	12' 6"	84"	94.5"	100.5"	10	60	40	100	40	100	

- 1 Towing capacity is limited by GCWR; your vehicle's towing capacity is the difference between the GCWR and the actual vehicle weight, including all water, fuel, passengers and cargo. Your towed vehicle should be equipped with auxiliary brakes if the weight of the towed vehicle exceeds 1,000 lbs. Consult your owner's manual for further towing information.
- 2 All tank capacities are estimated based upon calculations provided by the tank manufacturers and represent approximate capacities. The actual "usable capacity" may be greater or less than the estimated capacities based upon fabrication and installation of the tanks.
- 3 Actual filled LP capacity is 80% of listing due to safety shut-off required on tank.

The actual overall length of the recreational vehicle may differ from that indicated in the brochure due to variances in the manufacturing process and/or installed components. The actual length may be greater or less than that indicated. Due to the large variety of options and floorplan arrangements available to our customers, actual weights for each unit can differ significantly. Monaco Coach provides a weight sticker on each unit we produce which includes that unit's tank capacities and approximate weight. Consult your local Monaco Coach dealer for unit availability and further information. The information printed in this brochure reflects product design, fabrication, and component parts at the date of printing. The manufacturer reserves the right, at any time, to make changes in product design or material or component specifications as its sole option, without notice. This includes the substitution of components of a different brand or trade name which will result in comparable performance. All information printed in this brochure is subject to change after the date of printing. Some features shown or mentioned in this brochure are optional and may only be available in selected floorplans. Photographs may show props or decorations that are not standard equipment on Monaco Coach models. Monaco Coach, the Monaco logo and its design, are registered trademarks. All other products and company names are trademarks and/or registered trademarks of their respective holders. While the color of the motorhome's exterior and the interior fabrics depicted in this sales brochure are fair and reasonable depictions, the colors depicted may not be an exact match of the actual colors because of the variances in photo-processing and variances caused by inserting the photographs within the sales brochure. Due to product improvements, changes during the model year and/or transcription errors that may occur, information represented within this brochure may not be accurate at the time of your purchase. If certain information is significant to your purchasing decision, please confirm the information with your dealer prior to submitting your order. Component part and appliance manufacturers issue limited warranties covering those portions of the recreational vehicle not covered by the Limited Warranties issued by Monaco Coach Corporation. To learn which specific component parts and appliances are excluded from the Limited Warranties issued by Monaco Coach Corporation, please contact your selling dealership or Monaco Coach Corporation directly, or review the warranty packet inside the recreational vehicle.

## BODY CONSTRUCTION

Alumaframe® Superstructure  
 Steel Cage Cockpit Construction  
 Peaked One-Piece Fiberglass Roof with Fiberglass Insulation  
 Smooth Gel Coat Fiberglass Exterior Walls  
 Front and Rear Molded Fiberglass Caps  
 One-Piece Front Windshield  
 Interior Height 84"  
 One-Piece Generator Access Door  
 Rear Engine Doors with Struts  
 Fiberglass Engine Cover  
 Steel Framed Floor on Steel Trusses  
 Laminated Structurwood™ Flooring  
 Electric Flush-Floor Stepwell Cover  
 Interior Paneling with 3/4" Insulation

Foam Insulated Floor Framing with Luaun Backer  
 17.5" Chrome Power Heated Remote Mirrors  
 Headlamp with Turn Signal  
 Fog Lights  
 Flush-Mount Metal Fuel Doors  
 30" Deep Bedroom Slide-Outs  
 Side-Hinged Baggage Doors with Redesigned Extrusion and Latch Locations  
 One-Piece Polyethylene Pass-Through Storage Compartment  
 Wheel Mud Flaps  
 Full-Length Mud Flaps  
 3M Film Front Mask

Deluxe Full-Body Paint  
 Roof Ladder  
 Undercoating

### OPTIONS

Standard Run Savings Package  
 Includes: 3-Camera Rear Vision System with Audio and Adjustable Center Camera, Pillow Top Mattress, Exterior Tank Monitor Gauge  
 Storage Bay Slide-Out Tray, Pass-Through Slide-Out Battery Tray



## CHASSIS/ENGINE/SUSPENSION

Roadmaster Raised Rail Chassis RR8R  
 Cummins® ISC 330 Engine with Allison®  
 3000 MH 6-Speed World Transmission  
 and Electronic Shifter  
 Engine Displacement: 8.3L/540.5 Cu. In.  
 Torque: 950 lbs./ft. Max. Net at 1,400 RPM  
 Polished Stainless Steel Engine Exhaust  
 Tailpipe Tip  
 Fuel Tank Capacity 100 Gallon  
 Dual Fuel Fill  
 160 Amp Alternator

Rear Axle Ratio: 4.30:1  
 Radial Tires: 275/70R/22.5  
 Polished Aluminum Wheels  
 8 Gas Monroe® Shocks  
 8 Outboard-Mounted Air Bags  
 Anti-Lock Braking System with Full  
 Air Brake  
 Automatic Traction Control  
 Pac Brand Exhaust Brake  
 Auto Slack Adjusters

Pre-Wire for Supplemental  
 Braking System  
 Transmission Temperature Gauge  
 Air Cleaner Restrictor Gauge  
 Fuel and Water Separator  
 Remote Transmission Fill  
 Fully Automatic Leveling System (3 Point)  
 10,000 Lb. Hitch Receiver with Dual  
 Connector 4-Pin or 7-Pin

## COCKPIT

Automotive Dash with Beige Circuit  
 Board Instrumentation Panel  
 12V Chassis Battery Gauge on Dash  
 CD Player/Radio with Sirius-Ready  
 Compatibility and Weather Band  
 Wood Framed Cabinet Doors with  
 Smoked Glass over Front Entertainment  
 Center Systems  
 Front Cab over Television Secured with  
 Steel Framing  
 Rear Vision System with Audio and  
 Adjustable Camera  
 Adjustable Brake and Accelerator Pedal  
 Intermittent Windshield Wipers  
 6-Quart Tank for Windshield Fluid with  
 Fluid Sensor to Tank and "Low Wash"  
 Indicator on Dash

Tilt/Telescopic Steering Wheel  
 Cruise Control  
 Power Steering  
 ICC Light Switch to Driver's Side Console  
 Audio Low-Air Alarm  
 Air Horns  
 Molded Co-Pilot Side Console with Map  
 Pocket and Two-Tier Cup Holder  
 Front Power Sunvisors with  
 Integrated Motor  
 Soft Touch Vinyl Pilot and Co-Pilot  
 Seats (All Decors except Hampstead  
 Lane – Ralph Lauren Sport Decor)  
 New Style Distressed OptimaLeather™  
 Pilot and Co-Pilot Seats with Hampstead  
 Lane – Ralph Lauren Sport Decor  
 Six-Way Power Pilot Seat

Six-Way Power Co-Pilot Seat with  
 Powered Footrest  
 Carpeted Driver and Passenger  
 Floor Mats

## OPTIONS

Pilot and Co-Pilot Pull-Down Sunshades  
 OptimaLeather™ Pilot and Co-Pilot Seats  
 3-Camera Rear Vision System with Audio  
 and Adjustable Center Camera  
 Aladdin™ Junior System  
 Auxiliary Defroster

## APPLIANCES AND ACCESSORIES

Large Double-Door Refrigerator with  
 Ice Maker  
 High-Output Three-Burner Cooktop  
 without Oven  
 Removable Solid Surface Range Covers  
 Convection Spacesaver Microwave  
 24" Stereo Color TV with Remote  
 Control in Cockpit Overhead  
 20" Color TV with Remote Control  
 in Bedroom  
 TV Antenna

Home Theater System with DVD/VCR  
 Player with Surround Sound Speakers  
 Exterior Hook-Ups for DSS Dish  
 and Cable  
 CB Prep  
 Digital Satellite System Prep  
 Interior Cable TV Hook-Up and  
 Telephone Jacks  
 Exterior Gas Line Hook-Up Prep  
 for LP Accessories  
 Washer/Dryer Prep (N/A: 40PLQ)

## OPTIONS

High-Output Three-Burner Range  
 with Oven (N/A: 40PET)  
 Combination Washer/Dryer  
 27" Flatscreen LCD TV in Front  
 Cockpit Overhead  
 Fully Automatic Digital Satellite System

## SAFETY

Fire Extinguisher (10BC)  
 Deadbolt Lock on Entrance Door  
 120V GFI Protected Circuit (Kitchen,  
 Bath, Exterior)

LP Gas Detector  
 Smoke Detector  
 Carbon Monoxide Detector

Driver and Passenger Three-Point Seat  
 Belts (Wall-Mounted)  
 Third Brake Safety Light  
 Egress Window (One in Bedroom)

## CHASSIS/ENGINE/SUSPENSION

Roadmaster Raised Rail Chassis RR8R  
 Cummins® ISC 330 Engine with Allison®  
 3000 MH 6-Speed World Transmission  
 and Electronic Shifter  
 Engine Displacement: 8.3L/540.5 Cu. In.  
 Torque: 950 lbs./ft. Max. Net at 1,400 RPM  
 Polished Stainless Steel Engine Exhaust  
 Tailpipe Tip  
 Fuel Tank Capacity 100 Gallon  
 Dual Fuel Fill  
 160 Amp Alternator

Rear Axle Ratio: 4.30:1  
 Radial Tires: 275/70R/22.5  
 Polished Aluminum Wheels  
 8 Gas Monroe® Shocks  
 8 Outboard-Mounted Air Bags  
 Anti-Lock Braking System with Full  
 Air Brake  
 Automatic Traction Control  
 Pac Brand Exhaust Brake  
 Auto Slack Adjusters

Pre-Wire for Supplemental  
 Braking System  
 Transmission Temperature Gauge  
 Air Cleaner Restrictor Gauge  
 Fuel and Water Separator  
 Remote Transmission Fill  
 Fully Automatic Leveling System (3 Point)  
 10,000 Lb. Hitch Receiver with Dual  
 Connector 4-Pin or 7-Pin

## COCKPIT

Automotive Dash with Beige Circuit  
 Board Instrumentation Panel  
 12V Chassis Battery Gauge on Dash  
 CD Player/Radio with Sirius-Ready  
 Compatibility and Weather Band  
 Wood Framed Cabinet Doors with  
 Smoked Glass over Front Entertainment  
 Center Systems  
 Front Cab over Television Secured with  
 Steel Framing  
 Rear Vision System with Audio and  
 Adjustable Camera  
 Adjustable Brake and Accelerator Pedal  
 Intermittent Windshield Wipers  
 6-Quart Tank for Windshield Fluid with  
 Fluid Sensor to Tank and "Low Wash"  
 Indicator on Dash

Tilt/Telescopic Steering Wheel  
 Cruise Control  
 Power Steering  
 ICC Light Switch to Driver's Side Console  
 Audio Low-Air Alarm  
 Air Horns  
 Molded Co-Pilot Side Console with Map  
 Pocket and Two-Tier Cup Holder  
 Front Power Sunvisors with  
 Integrated Motor  
 Soft Touch Vinyl Pilot and Co-Pilot  
 Seats (All Decors except Hampstead  
 Lane – Ralph Lauren Sport Decor)  
 New Style Distressed OptimaLeather™  
 Pilot and Co-Pilot Seats with Hampstead  
 Lane – Ralph Lauren Sport Decor  
 Six-Way Power Pilot Seat

Six-Way Power Co-Pilot Seat with  
 Powered Footrest  
 Carpeted Driver and Passenger  
 Floor Mats

## OPTIONS

Pilot and Co-Pilot Pull-Down Sunshades  
 OptimaLeather™ Pilot and Co-Pilot Seats  
 3-Camera Rear Vision System with Audio  
 and Adjustable Center Camera  
 Aladdin™ Junior System  
 Auxiliary Defroster

## APPLIANCES AND ACCESSORIES

Large Double-Door Refrigerator with  
 Ice Maker  
 High-Output Three-Burner Cooktop  
 without Oven  
 Removable Solid Surface Range Covers  
 Convection Spacesaver Microwave  
 24" Stereo Color TV with Remote  
 Control in Cockpit Overhead  
 20" Color TV with Remote Control  
 in Bedroom  
 TV Antenna

Home Theater System with DVD/VCR  
 Player with Surround Sound Speakers  
 Exterior Hook-Ups for DSS Dish  
 and Cable  
 CB Prep  
 Digital Satellite System Prep  
 Interior Cable TV Hook-Up and  
 Telephone Jacks  
 Exterior Gas Line Hook-Up Prep  
 for LP Accessories  
 Washer/Dryer Prep (N/A: 40PLQ)

## OPTIONS

High-Output Three-Burner Range  
 with Oven (N/A: 40PET)  
 Combination Washer/Dryer  
 27" Flatscreen LCD TV in Front  
 Cockpit Overhead  
 Fully Automatic Digital Satellite System

## SAFETY

Fire Extinguisher (10BC)  
 Deadbolt Lock on Entrance Door  
 120V GFI Protected Circuit (Kitchen,  
 Bath, Exterior)

LP Gas Detector  
 Smoke Detector  
 Carbon Monoxide Detector

Driver and Passenger Three-Point Seat  
 Belts (Wall-Mounted)  
 Third Brake Safety Light  
 Egress Window (One in Bedroom)

## INTERIOR

New Vintage Oak Cabinetry  
 Raised Panel Hardwood Cabinet Doors  
 Hardwood Cabinet End Panels  
 Refrigerator Raised Panel  
 Hardwood Inserts  
 New Decorative Wallboard  
 New Wallpaper Border Bath  
 Self-Supporting Top-Hinged Overhead Storage Doors and Positive Catches on All Other Doors  
 Heavy-Duty Ball Bearing Drawer Guides  
 Wood Cabinet Drawer Boxes  
 Metal Interior Grab Handle on Dash at Entry Door  
 Antique Brass Cabinetry Hardware and Bath Accessories  
 Polished Solid Surface Radius Profile  
 Kitchen Countertop with Under-Mounted Plexus-Stone Sink with Two Sink Covers  
 Kitchen Countertop Extension (40PET)  
 Toe Kicks Kitchen and Bath Base Cabinets  
 Solid Surface Radius Profile Bath Lavatory Countertop with Integrated Bowl  
 Dinette Tops Laminated with Solid Surface Edge  
 All Other Countertops Hardwood with Beveled Edge except Kitchen, Bath Lavatory and Dinette

Kitchen Overhead Cabinets with Adjustable Shelf (N/A: 38PDQ, 40PLQ)  
 Second Kitchen Pantry next to Refrigerator, Roll-Out Storage in Upper and Lower Cabinet (37PBD)  
 Silverware Drawer with Organizer Kitchen Base Cabinets  
 Kitchen, Smoked Beveled Edge Mirrors behind Stove Area  
 Entryway Flooring Laminate Tile  
 Kitchen Flooring Laminate Tile  
 Bath Flooring Laminate Tile  
 Textured Style Nylon Carpeting with Pad in Living Area and Bedroom  
 Engine Rug Cover (N/A: 37PBD)  
 Soft Touch Padded Vinyl Ceiling  
 Hardwood Inserts on Slide-Out Fascia Legs with Decorative Corner Blocks  
 Hutch Cabinet in Living Area with Decorative Glass and Accent Mirror between Countertop and Overhead Cabinet (37PBD)  
 Accent Mirrors on Living Area Bath Wall Living Room Side or Side of Refrigerator Cabinet (N/A: 37PBD, 40PET)  
 Decorative Picture in Bedroom (N/A: 37PBD)  
 Hardwood Raised Panel Bathroom Door  
 Accent Crown Molding in Bedroom and Living Area on All Open Walls

Medicine Cabinet with Adjustable Shelves (N/A on Angle Cabinets)  
 Bathroom Lavatory Mirror  
 Towel Bar inside Private Bath  
 Two Towel Rings in Bathroom  
 Oversized Rear Wardrobe Closet with Deluxe Mirror Door Frames Antique Brass (N/A: 37PBD, 40PLQ)  
 Bedroom Swing-Away TV Cabinets (37PBD, 40PET)  
 Roadside Bedroom Slide-Out Wardrobe (37PBD)  
 Bedroom Dresser Foot of Bed and Decorative Furniture Leg (40PET)  
 Bedroom Wardrobe Slide-Out Foot of Bed (N/A: 37PBD, 40PET)  
 Bedspread Pillow Shams with Two Decorative Pillows  
 Hardwood Headboard with Raised Panel Inserts  
 Pleated Day/Night Blackout Shades in Living Area and Bedroom  
 Mini Blinds in Kitchen and Bathroom  
 Soil Repellent Fabric Protection

## OPTIONS

Decors: Espresso II, Basil Leaf, Onyx II, Hampstead Lane – Ralph Lauren Sport  
 Wood Choice: Newport Cherry and Champagne Select

## FURNITURE

Queen Bed with Overhead Cabinet and Nightstands  
 Party Table behind Co-Pilot Seat (37PBD)  
 Arched Back Wood Booth Dinette with Table Top and 30" Drawers (N/A: 40PET)  
 Freestanding Dinette with Full-Length Wall Cabinet, Two Freestanding Chairs and Two Folding Chairs (40PET)  
 Roadside: Fabric Easy-Bed Sofa with Two Pillows  
 Curbside: Fabric Easy-Bed Sofa with Two Pillows (N/A: 37PBD)  
 Curbside: Fabric Barrel Chair (37PBD)  
 Fabric Barrel Chair and New Style Desk Chair Bedroom, Roadside Chair Deleted with Washer and Dryer Option (40PLQ)

## OPTIONS

Pillow Top Mattress  
 Roadside: Fabric Hide-a-Bed Sofa with Air Mattress and Two Pillows (N/A: 40PLQ)  
 Curbside: OptimaLeather™ Sleeper Sofa with Two Pillows  
 Curbside: OptimaLeather™ Hide-a-Bed Sofa with Air Mattress and Two Pillows (40PLQ)  
 Curbside: OptimaLeather™ Recliner IPO Barrel Chair (37PBD)  
 Curbside: OptimaLeather™ Euro-Recliner Chair with Heat, Massage and Ottoman IPO Barrel Chair (37PBD)

Curbside: Computer Workstation with 27" LCD TV and OptimaLeather™ Euro-Recliner with Ottoman, Heat and Massage (N/A: 37PBD, 40PLQ)  
 Fabric Barrel Chair IPO Desk Chair Bedroom (N/A with Washer and Dryer Option 40PLQ)  
 Curbside Desk Bedroom IPO Fabric Barrel Chair (Requires Washer/Dryer Option) (40PLQ)  
 King Bed with One Nightstand (40PDQ)  
 Freestanding Dinette with Full-Length Wall Cabinet, Two New Style Freestanding Chairs and Two Folding Chairs (N/A: 40PET)

## INTERIOR

New Vintage Oak Cabinetry  
 Raised Panel Hardwood Cabinet Doors  
 Hardwood Cabinet End Panels  
 Refrigerator Raised Panel  
 Hardwood Inserts  
 New Decorative Wallboard  
 New Wallpaper Border Bath  
 Self-Supporting Top-Hinged Overhead  
 Storage Doors and Positive Catches on  
 All Other Doors  
 Heavy-Duty Ball Bearing Drawer Guides  
 Wood Cabinet Drawer Boxes  
 Metal Interior Grab Handle on Dash at  
 Entry Door  
 Antique Brass Cabinetry Hardware and  
 Bath Accessories  
 Polished Solid Surface Radius Profile  
 Kitchen Countertop with Under-Mounted  
 Plexus-Stone Sink with Two Sink Covers  
 Kitchen Countertop Extension (40PET)  
 Toe Kicks Kitchen and Bath Base Cabinets  
 Solid Surface Radius Profile Bath Lavatory  
 Countertop with Integrated Bowl  
 Dinette Tops Laminated with Solid  
 Surface Edge  
 All Other Countertops Hardwood with  
 Beveled Edge except Kitchen, Bath  
 Lavatory and Dinette

Kitchen Overhead Cabinets with  
 Adjustable Shelf (N/A: 38PDQ, 40PLQ)  
 Second Kitchen Pantry next to  
 Refrigerator, Roll-Out Storage in Upper  
 and Lower Cabinet (37PBD)  
 Silverware Drawer with Organizer Kitchen  
 Base Cabinets  
 Kitchen, Smoked Beveled Edge Mirrors  
 behind Stove Area  
 Entryway Flooring Laminate Tile  
 Kitchen Flooring Laminate Tile  
 Bath Flooring Laminate Tile  
 Textured Style Nylon Carpeting with Pad  
 in Living Area and Bedroom  
 Engine Rug Cover (N/A: 37PBD)  
 Soft Touch Padded Vinyl Ceiling  
 Hardwood Inserts on Slide-Out Fascia  
 Legs with Decorative Corner Blocks  
 Hutch Cabinet in Living Area  
 with Decorative Glass and Accent  
 Mirror between Countertop and  
 Overhead Cabinet (37PBD)  
 Accent Mirrors on Living Area Bath  
 Wall Living Room Side or Side of  
 Refrigerator Cabinet (N/A: 37PBD, 40PET)  
 Decorative Picture in Bedroom  
 (N/A: 37PBD)  
 Hardwood Raised Panel Bathroom Door  
 Accent Crown Molding in Bedroom and  
 Living Area on All Open Walls

Medicine Cabinet with Adjustable  
 Shelves (N/A on Angle Cabinets)  
 Bathroom Lavatory Mirror  
 Towel Bar inside Private Bath  
 Two Towel Rings in Bathroom  
 Oversized Rear Wardrobe Closet with  
 Deluxe Mirror Door Frames Antique Brass  
 (N/A: 37PBD, 40PLQ)  
 Bedroom Swing-Away TV Cabinets  
 (37PBD, 40PET)  
 Roadside Bedroom Slide-Out Wardrobe  
 (37PBD)  
 Bedroom Dresser Foot of Bed and  
 Decorative Furniture Leg (40PET)  
 Bedroom Wardrobe Slide-Out Foot  
 of Bed (N/A: 37PBD, 40PET)  
 Bedspread Pillow Shams with Two  
 Decorative Pillows  
 Hardwood Headboard with Raised  
 Panel Inserts  
 Pleated Day/Night Blackout Shades  
 in Living Area and Bedroom  
 Mini Blinds in Kitchen and Bathroom  
 Soil Repellant Fabric Protection

## OPTIONS

Decors: Espresso II, Basil Leaf, Onyx II,  
 Hampstead Lane – Ralph Lauren Sport  
 Wood Choice: Newport Cherry and  
 Champagne Select

## FURNITURE

Queen Bed with Overhead Cabinet  
 and Nightstands  
 Party Table behind Co-Pilot Seat (37PBD)  
 Arched Back Wood Booth Dinette with  
 Table Top and 30" Drawers (N/A: 40PET)  
 Freestanding Dinette with Full-Length  
 Wall Cabinet, Two Freestanding Chairs  
 and Two Folding Chairs (40PET)  
 Roadside: Fabric Easy-Bed Sofa with  
 Two Pillows  
 Curbside: Fabric Easy-Bed Sofa with  
 Two Pillows (N/A: 37PBD)  
 Curbside: Fabric Barrel Chair (37PBD)  
 Fabric Barrel Chair and New Style Desk  
 Chair Bedroom, Roadside Chair Deleted  
 with Washer and Dryer Option (40PLQ)

## OPTIONS

Pillow Top Mattress  
 Roadside: Fabric Hide-a-Bed Sofa with Air  
 Mattress and Two Pillows (N/A: 40PLQ)  
 Curbside: OptimaLeather™ Sleeper Sofa  
 with Two Pillows  
 Curbside: OptimaLeather™ Hide-a-Bed  
 Sofa with Air Mattress and Two Pillows  
 (40PLQ)  
 Curbside: OptimaLeather™ Recliner  
 IPO Barrel Chair (37PBD)  
 Curbside: OptimaLeather™ Euro-Recliner  
 Chair with Heat, Massage and Ottoman  
 IPO Barrel Chair (37PBD)

Curbside: Computer Workstation with  
 27" LCD TV and OptimaLeather™  
 Euro-Recliner with Ottoman, Heat  
 and Massage (N/A: 37PBD, 40PLQ)  
 Fabric Barrel Chair IPO Desk Chair  
 Bedroom (N/A with Washer and Dryer  
 Option 40PLQ)  
 Curbside Desk Bedroom IPO Fabric  
 Barrel Chair (Requires Washer/Dryer  
 Option) (40PLQ)  
 King Bed with One Nightstand (40PDQ)  
 Freestanding Dinette with Full-Length  
 Wall Cabinet, Two New Style Freestanding  
 Chairs and Two Folding Chairs  
 (N/A: 40PET)

## ELECTRICAL SYSTEMS AND LIGHTS

50 Amp 120V Distribution Panel and Manual Retracting Power Cord Reel  
Energy Management System  
2,000 Watt Inverter  
Onan® 8.0 kW QD Diesel Generator  
Four 6V House Batteries  
Battery Disconnect Switch at Front Door  
12V and 110V Outlet in Cockpit Area  
Porch Light and Exterior Step Light on Same Switch  
Exterior Power Entry Step with Light  
Interior Stepwell Entry Step Lights  
Lights in Outside Storage Compartments  
120V Receptacles in Outside Storage Compartment

Underhood Utility Light  
Receptacle and Phone Jack in Dinette Area  
Directional Map Lights Pilot and Co-Pilot Seats  
Halogen Light on Driver and Passenger Overhead  
Redesigned Convenience Center in Hallway  
Fluorescent Light(s) under Kitchen Overhead  
Fluorescent Ceiling Lights Throughout  
Fluorescent Ceiling Lights inside Living Area Slide-Out House  
Decorative Framed Galley Ceiling  
Fluorescent Light with Skylight

Decorative Lighting Antique Brass Living Room Wall Light, Dinette Overhead Light and Cosmetic Vanity Light  
Halogen Lights under Living Room, Dining Room and Bedroom Dresser Overhead Cabinets  
Gem Lights over Bed Antique Brass Finish with His and Hers Switches

## OPTIONS

Exterior Tank Monitor Gauge in Wet Bay

## PLUMBING AND LP SYSTEMS

Kitchen Composite Under-Mounted Sink with New Style Single Lever Satin Nickel Faucet with Pullout Sprayer  
Separate Satin Nickel Faucet for Filtered Water  
New Bath Lavatory Faucet Single Handle Antique Brass  
Demand Water System and Water Pump  
10-Gallon LP Gas/Electric Water Heater with Electronic Ignition, DSI  
Winterization Valving System  
Water Heater Bypass Valving

New Style Porcelain Toilet with Sprayer  
No-Fuss Flush Holding Tank Rinsing System  
Insulated Systems Compartment with Easy Access to Hook-Up  
Shower inside Wet Bay with Hot/Cold Water  
Soap Dispenser inside Utility Bay  
Gravity and Pressurized Water Fill  
Contained Storage Area for Sewer Hose (N/A with RV Sani-Con System Option)

One-Piece Fiberglass Shower  
Antique Brass Shower Door Frame with Decorative Glass

## OPTIONS

RV Sani-Con 1 System, Holding Tank Flush System  
Electric Automatic Winterization  
Power Water Hose Reel  
Bathtub IPO Shower

## HEATING, VENTS AND AIR CONDITIONING

One 13.5M BTU and One 11.0M BTU Roof Air Conditioner with Ducted Air and Digital Thermostat Control  
Electronic Ignition Furnace (40M BTU for 37PBD) (51M BTU: 31M and 20M)  
Electronic AC/Heat Climate Control System  
In-Floor Ducted Heating System

Bath Powered Attic Fan with Wall Control of Automatic Dome and Fan Power  
Kitchen Powered Attic Fan with Wall Control of Automatic Dome and Fan Power  
12V Heater in Wet Bay  
Wood Louver Air Return Grill for Furnace  
Metal Floor Registers Antique Brass

## OPTIONS

Dual 13.5M BTU Air Conditioner with Heat Pumps IPO One 13.5M BTU and One 11.0M BTU Roof Air Conditioner  
Fantastic 12V Attic Fan with Rain Sensor with Electronic Wall Thermostat in Kitchen  
Fantastic 12V Attic Fan with Rain Sensor with Electronic Wall Thermostat in Bath

## WINDOWS, DOORS AND AWNINGS

Radius Flush-Mount Dual Pane Safety Glass Dark Tinted Slider Windows  
Armless Powered Front Door Awning  
Front Entry Door with Removable Screen and Anti-Skid Steps  
Exterior Entry Door Grab Handle  
Metal Interior Grab Handle on Dash at Entry Door  
Eclipse Automatic Patio Awning

Topper Slide-Out Awnings Living Area and Bedroom  
Window Awnings on All Slide-Out House Windows except Kitchen Windows and Slide-Out Windows under Patio Awning  
Tinted Skylight in Bathroom with Protecta Glaze  
Protecta Glaze Tinted Plexiglas® Skylight in Kitchen with Pleated Shade

## OPTIONS

Bedroom Skylight with Shade (40PLQ)  
Bedroom Window Awning on Sidewall (37PBD, 40PET)

## ELECTRICAL SYSTEMS AND LIGHTS

50 Amp 120V Distribution Panel and Manual Retracting Power Cord Reel Energy Management System  
2,000 Watt Inverter  
Onan® 8.0 kW QD Diesel Generator  
Four 6V House Batteries  
Battery Disconnect Switch at Front Door  
12V and 110V Outlet in Cockpit Area  
Porch Light and Exterior Step Light on Same Switch  
Exterior Power Entry Step with Light  
Interior Stepwell Entry Step Lights  
Lights in Outside Storage Compartments  
120V Receptacles in Outside Storage Compartment

Underhood Utility Light  
Receptacle and Phone Jack in Dinette Area  
Directional Map Lights Pilot and Co-Pilot Seats  
Halogen Light on Driver and Passenger Overhead  
Redesigned Convenience Center in Hallway  
Fluorescent Light(s) under Kitchen Overhead  
Fluorescent Ceiling Lights Throughout  
Fluorescent Ceiling Lights inside Living Area Slide-Out House  
Decorative Framed Galley Ceiling Fluorescent Light with Skylight

Decorative Lighting Antique Brass Living Room Wall Light, Dinette Overhead Light and Cosmetic Vanity Light  
Halogen Lights under Living Room, Dining Room and Bedroom Dresser Overhead Cabinets  
Gem Lights over Bed Antique Brass Finish with His and Hers Switches

## OPTIONS

Exterior Tank Monitor Gauge in Wet Bay

## PLUMBING AND LP SYSTEMS

Kitchen Composite Under-Mounted Sink with New Style Single Lever Satin Nickel Faucet with Pullout Sprayer  
Separate Satin Nickel Faucet for Filtered Water  
New Bath Lavatory Faucet Single Handle Antique Brass  
Demand Water System and Water Pump  
10-Gallon LP Gas/Electric Water Heater with Electronic Ignition, DSI  
Winterization Valving System  
Water Heater Bypass Valving

New Style Porcelain Toilet with Sprayer  
No-Fuss Flush Holding Tank Rinsing System  
Insulated Systems Compartment with Easy Access to Hook-Up  
Shower inside Wet Bay with Hot/Cold Water  
Soap Dispenser inside Utility Bay  
Gravity and Pressurized Water Fill  
Contained Storage Area for Sewer Hose (N/A with RV Sani-Con System Option)

One-Piece Fiberglass Shower  
Antique Brass Shower Door Frame with Decorative Glass

## OPTIONS

RV Sani-Con 1 System, Holding Tank Flush System  
Electric Automatic Winterization  
Power Water Hose Reel  
Bathtub IPO Shower

## HEATING, VENTS AND AIR CONDITIONING

One 13.5M BTU and One 11.0M BTU Roof Air Conditioner with Ducted Air and Digital Thermostat Control  
Electronic Ignition Furnace (40M BTU for 37PBD) (51M BTU: 31M and 20M)  
Electronic AC/Heat Climate Control System  
In-Floor Ducted Heating System

Bath Powered Attic Fan with Wall Control of Automatic Dome and Fan Power  
Kitchen Powered Attic Fan with Wall Control of Automatic Dome and Fan Power  
12V Heater in Wet Bay  
Wood Louver Air Return Grill for Furnace  
Metal Floor Registers Antique Brass

## OPTIONS

Dual 13.5M BTU Air Conditioner with Heat Pumps IPO One 13.5M BTU and One 11.0M BTU Roof Air Conditioner  
Fantastic 12V Attic Fan with Rain Sensor with Electronic Wall Thermostat in Kitchen  
Fantastic 12V Attic Fan with Rain Sensor with Electronic Wall Thermostat in Bath

## WINDOWS, DOORS AND AWNINGS

Radius Flush-Mount Dual Pane Safety Glass Dark Tinted Slider Windows  
Armless Powered Front Door Awning  
Front Entry Door with Removable Screen and Anti-Skid Steps  
Exterior Entry Door Grab Handle  
Metal Interior Grab Handle on Dash at Entry Door  
Eclipse Automatic Patio Awning

Topper Slide-Out Awnings Living Area and Bedroom  
Window Awnings on All Slide-Out House  
Windows except Kitchen Windows and Slide-Out Windows under Patio Awning  
Tinted Skylight in Bathroom with Protecta Glaze  
Protecta Glaze Tinted Plexiglas® Skylight in Kitchen with Pleated Shade

## OPTIONS

Bedroom Skylight with Shade (40PLQ)  
Bedroom Window Awning on Sidewall (37PBD, 40PET)



SIGNATURE SERIES

THE EXECUTIVE®

DYNASTY®

WINDSOR®

CAMELOT™

DIPLOMAT®

KNIGHT®

CAYMAN®

LAPALMA®

MONARCH SE®

ESQUIRE™

Welcome to the first step toward living your dream. You'll discover that it's not so far from here to there. Because Monaco has a coach that's right for every dreamer. Look closely, and you'll find the high-tech, high-style luxury you've dreamed about is also the very best deal under the sun. Point by point, in every price range, Monaco leads the way in performance, comfort and safety. Yes, you're headed for a dream come true. Just take your first step, and climb aboard.



91320 Coburg Industrial Way, Coburg, OR 97408  
800 634-0855

606 Nelson's Pkwy., Wakarusa, IN 46573  
800 650-7337

[www.monacocoach.com](http://www.monacocoach.com)

Monaco Coach Corporation is traded on the NYSE under the listing MNC.  
0805 NPN: BROMKNI



## SIGNATURE SERIES

THE EXECUTIVE<sup>®</sup>

DYNASTY<sup>®</sup>

WINDSOR<sup>®</sup>

CAMELOT<sup>™</sup>

DIPLOMAT<sup>®</sup>

KNIGHT<sup>®</sup>

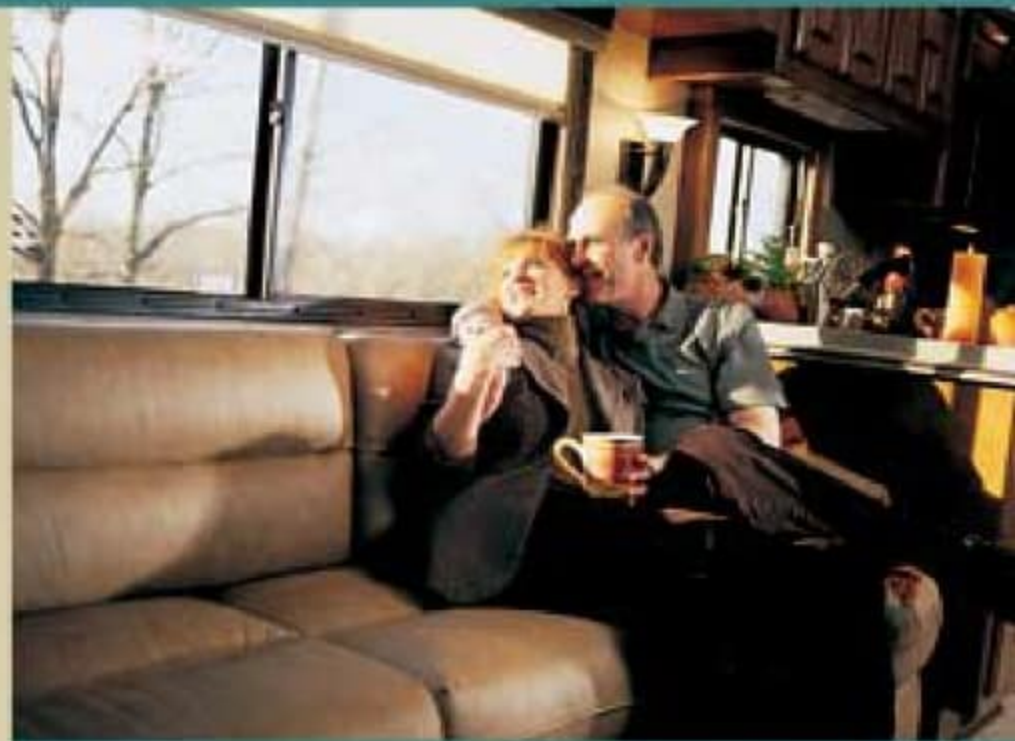
CAYMAN<sup>®</sup>

LAPALMA<sup>®</sup>

MONARCH SE<sup>®</sup>

ESQUIRE<sup>™</sup>

Welcome to the first step toward living your dream. You'll discover that it's not so far from here to there. Because Monaco has a coach that's right for every dreamer. Look closely, and you'll find the high-tech, high-style luxury you've dreamed about is also the very best deal under the sun. Point by point, in every price range, Monaco leads the way in performance, comfort and safety. Yes, you're headed for a dream come true. Just take your first step, and climb aboard.



91320 Coburg Industrial Way, Coburg, OR 97408  
800 634-0855

606 Nelson's Pkwy., Wakarusa, IN 46573  
800 650-7337

[www.monacocoach.com](http://www.monacocoach.com)

Monaco Coach Corporation is traded on the NYSE under the listing MNC.  
0805 NPN: BROMKNI