



MONACO®

DRIVING YOUR DREAM.™

2006 THE EXECUTIVE®





MONACO[®]

DRIVING YOUR DREAM.™

2006 THE EXECUTIVE[®]



WELCOME TO THE HEART AND SOUL OF 500 HORSEPOWER.

Chances are, your love for state-of-the-art power and performance led you to open the door of The Executive. And now, its astounding luxury and exquisite styling are sure to pull you inside. Yes, this marvel of high technology is also high on living, and we invite you to take a closer look at the countless details that combine to create this unique home.

A full 6'10" of interior height provides the remarkable spaciousness, which is enhanced by the beautiful recessed ceiling design and halogen lighting. Throughout the coach, Corian® tops, gleaming ceramic tile and solid wood cabinet doors blend with plush fabrics, optional leather furnishings and textured designer carpeting, including the optional sculptured design shown here. Simply put, everywhere you look, our craftsmanship will exceed your every expectation.

- 1 Monaco coaches are legendary for their finishing touches. Crown molding adds residential styling in the living area and bedroom, while the decorative hardwood slide-out fascia design features new carved wood columns.
- 2 In the galley, you'll find only top-of-the-line features, including a stainless steel convection microwave with many versatile cooking functions. The new ceramic tile backsplash design is easily cleaned and is a stylish complement to the Corian® countertop and integrated sink.
- 3 A built-in cabinet houses the home theater system with a DVD/VCR/CD player — and you'll enjoy it all on the 32" LCD TV or the optional 37" LCD TV that lowers from the living room ceiling.
- 4 An exciting new feature throughout the coach is the Multiplex wiring system. This allows switch panels like these to be located in the living area, galley and bedroom — giving you control of slide-outs, lighting and more, from wherever it's most convenient. Multiplexing also reduces the amount of wiring that is needed, which makes servicing easier and reduces the overall weight of the coach.



WELCOME TO THE HEART AND SOUL OF 500 HORSEPOWER.

Chances are, your love for state-of-the-art power and performance led you to open the door of The Executive. And now, its astounding luxury and exquisite styling are sure to pull you inside. Yes, this marvel of high technology is also high on living, and we invite you to take a closer look at the countless details that combine to create this unique home.

A full 6'10" of interior height provides the remarkable spaciousness, which is enhanced by the beautiful recessed ceiling design and halogen lighting. Throughout the coach, Corian® tops, gleaming ceramic tile and solid wood cabinet doors blend with plush fabrics, optional leather furnishings and textured designer carpeting, including the optional sculptured design shown here. Simply put, everywhere you look, our craftsmanship will exceed your every expectation.

- 1 Monaco coaches are legendary for their finishing touches. **Crown molding** adds residential styling in the living area and bedroom, while the decorative hardwood slide-out fascia design features new carved wood columns.
- 2 In the galley, you'll find only top-of-the-line features, including a **stainless steel convection microwave** with many versatile cooking functions. The new **ceramic tile backsplash** design is easily cleaned and is a stylish complement to the **Corian® countertop and integrated sink**.
- 3 A built-in cabinet houses the home theater system with a **DVD/VCR/CD player** — and you'll enjoy it all on the **32" LCD TV** or the optional **37" LCD TV** that lowers from the living room ceiling.
- 4 An exciting new feature throughout the coach is the **Multiplex wiring system**. This allows switch panels like these to be located in the living area, galley and bedroom — giving you control of slide-outs, lighting and more, from wherever it's most convenient. Multiplexing also reduces the amount of wiring that is needed, which makes servicing easier and reduces the overall weight of the coach.





Interior, Sandia IV, Natural Cherry, Fresco II.







WHEN YOU'RE NOT DRIVING YOUR DREAM,
WE'LL HELP YOU LIVE IT.

At Monaco, we don't just design better motorhomes — we design better experiences. In the front of the coach, it's all about things like GPS and Aladdin™ systems, automatic traction control, a one-piece windshield and a pilot seat that automatically moves forward when the slide-out's engaged. But here, in the living quarters, it's all about the basics — efficient storage space and plenty of elbow room. Fortunately, you can count on The Executive to give you both.

You'll appreciate the generous cabinet space with lined shelves and satin nickel finished hardware. Nightstands flank the queen bed and feature Corian® tops, and a built-in hamper helps you keep things tidy. We'd also like to point out the new multiplex switches, putting many important controls right at your bedside.

- 1 The **bedroom dresser** offers roomy storage inside large drawers that lock in place when they're closed and operate reliably on heavy-duty, low-friction metal roller guides. Also shown here are the stylish **blackout shades**, for more effective room darkening while napping or in the early morning hours.
- 2 You'll find plenty of space and sturdy support for hanging clothes in this **oversized rear wardrobe closet**. The mirrored doors also add style and spaciousness to the bedroom.

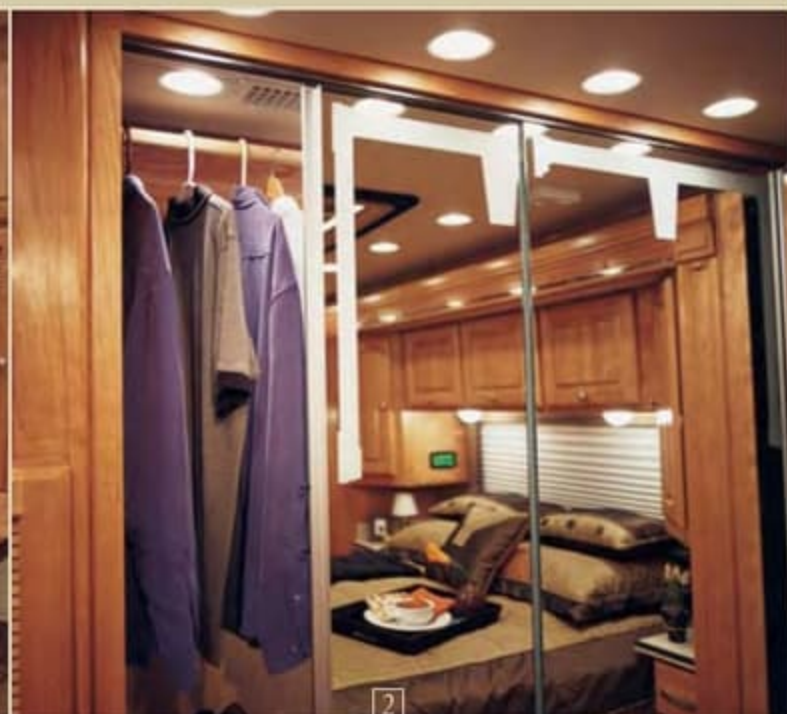


WHEN YOU'RE NOT DRIVING YOUR DREAM,
WE'LL HELP YOU LIVE IT.

At Monaco, we don't just design better motorhomes — we design better experiences. In the front of the coach, it's all about things like GPS and Aladdin™ systems, automatic traction control, a one-piece windshield and a pilot seat that automatically moves forward when the slide-out's engaged. But here, in the living quarters, it's all about the basics — efficient storage space and plenty of elbow room. Fortunately, you can count on The Executive to give you both.

You'll appreciate the generous cabinet space with lined shelves and satin nickel finished hardware. Nightstands flank the queen bed and feature Corian® tops, and a built-in hamper helps you keep things tidy. We'd also like to point out the new multiplex switches, putting many important controls right at your bedside.

- 1 The bedroom dresser offers roomy storage inside large drawers that lock in place when they're closed and operate reliably on heavy-duty, low-friction metal roller guides. Also shown here are the stylish blackout shades, for more effective room darkening while napping or in the early morning hours.
- 2 You'll find plenty of space and sturdy support for hanging clothes in this oversized rear wardrobe closet. The mirrored doors also add style and spaciousness to the bedroom.



WHEN GREAT STYLING PROVIDES BETTER SAFETY AND CONVENIENCE, YOU KNOW YOU'RE ONTO SOMETHING.

Monaco has a long reputation for being ahead of the curve when it comes to distinctive styling. In fact, we've collaborated with some of the most respected European auto-industry designers. But even more importantly, our forward-looking designs accommodate the very latest advancements in safety and convenience.

Below, you can learn more about the custom entry door, the side-hinged baggage doors and the enormous one-piece windshield. Other safety features include halogen fog lights, daytime running lights and power controlled heated mirrors with turn indicator lights — mounted on the front cap so you don't have to turn your head. For greater convenience and easier servicing, the 10 kW diesel generator is accessed through the front cap on a power slide-out tray. And incomparable strength is provided by the one-piece molded, crowned roof.

- 1 Our new stainless-steel **Super Service Center** is organized to help you keep things tidy and includes a hot and cold water faucet and paper towel dispenser. You also have the option of the **RV Sani-Con tank drainage system**, which provides greater pumping ability and reduces handling of the hose.
- 2 Thanks to the optional **slide-out trays** (either manual or electric), even larger items in the **pass-through bays** can be easily reached.



Find all the latest product news and updates online: monacocoach.com

WARRANTIES

12 month/24,000 mile
basic limited warranty

5 year/50,000 mile
limited warranty on aluminum or steel frame structure of sidewall, roof, front and rear cap

3 year/36,000 mile
limited warranty on Roadmaster chassis

Applies to certain models. See owner's manual for complete details.

WHEN GREAT STYLING PROVIDES BETTER SAFETY AND CONVENIENCE, YOU KNOW YOU'RE ONTO SOMETHING.

Monaco has a long reputation for being ahead of the curve when it comes to distinctive styling. In fact, we've collaborated with some of the most respected European auto-industry designers. But even more importantly, our forward-looking designs accommodate the very latest advancements in safety and convenience.

Below, you can learn more about the custom entry door, the side-hinged baggage doors and the enormous one-piece windshield. Other safety features include halogen fog lights, daytime running lights and power controlled heated mirrors with turn indicator lights — mounted on the front cap so you don't have to turn your head. For greater convenience and easier servicing, the 10 kW diesel generator is accessed through the front cap on a power slide-out tray. And incomparable strength is provided by the one-piece molded, crowned roof.

- 1 Our new stainless-steel **Super Service Center** is organized to help you keep things tidy and includes a **hot and cold water faucet** and **paper towel dispenser**. You also have the option of the **RV Sani-Con tank drainage system**, which provides greater pumping ability and reduces handling of the hose.
- 2 Thanks to the optional **slide-out trays** (either manual or electric), even larger items in the **pass-through bays** can be easily reached.



Find all the latest product news and updates online: monacocoach.com

WARRANTIES

12 month/24,000 mile
basic limited warranty

5 year/50,000 mile
limited warranty on aluminum or steel frame structure of sidewall, roof, front and rear cap

3 year/36,000 mile
limited warranty on Roadmaster chassis

Applies to certain models. See owner's manual for complete details.





A **BAGGAGE DOORS**

Accessing your cargo is easier than ever with our side-hinged baggage doors under the slide-out houses. The handles are conveniently located in the upper corners of the door, and power locks allow you to quickly and easily secure your belongings.

B **ENTRY DOOR**

Our exclusive, custom-built front entry door features a pressurized air seal with dual locking pins to keep out noise and dust, and a removable top screen — giving you a clearer view of the road.

C **WINDSHIELD**

The styling of the front cap provides for our enormous one-piece Panaview™ windshield, giving you the largest unobstructed view you'll find anywhere. The wipers are also mounted out of the way and the side window pillars are more slender — giving you a larger panorama.



A
BAGGAGE DOORS

Accessing your cargo is easier than ever with our side-hinged baggage doors under the slide-out houses. The handles are conveniently located in the upper corners of the door, and power locks allow you to quickly and easily secure your belongings.

B
ENTRY DOOR

Our exclusive, custom-built front entry door features a pressurized air seal with dual locking pins to keep out noise and dust, and a removable top screen — giving you a clearer view of the road.

C
WINDSHIELD

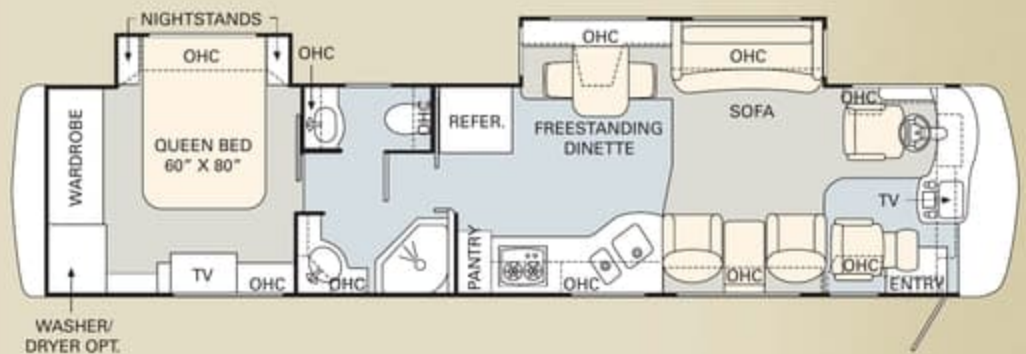
The styling of the front cap provides for our enormous one-piece Panaview™ windshield, giving you the largest unobstructed view you'll find anywhere. The wipers are also mounted out of the way and the side window pillars are more slender — giving you a larger panorama.

You'll notice that the models of The Executive are named after some of the most majestic mountain peaks. Along with the power to take on any mountain climb with ease, this distinctive coach is available in a wide range of innovative floorplans — each designed to provide a truly higher standard of living.

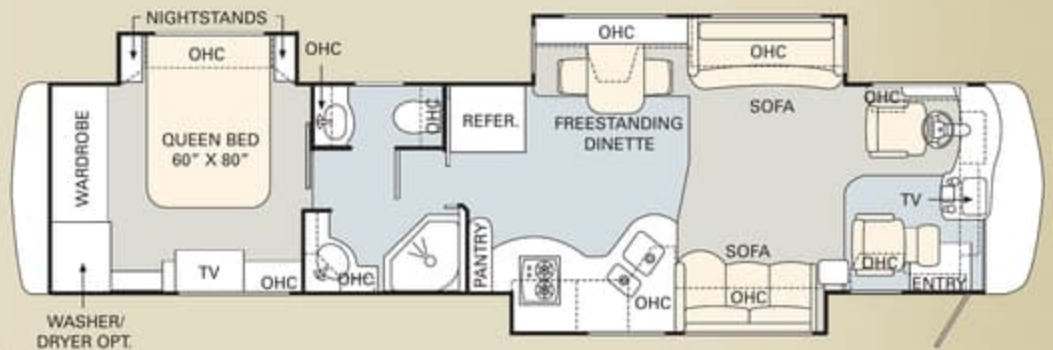
■ TILE ■ CARPET

Furniture Options:

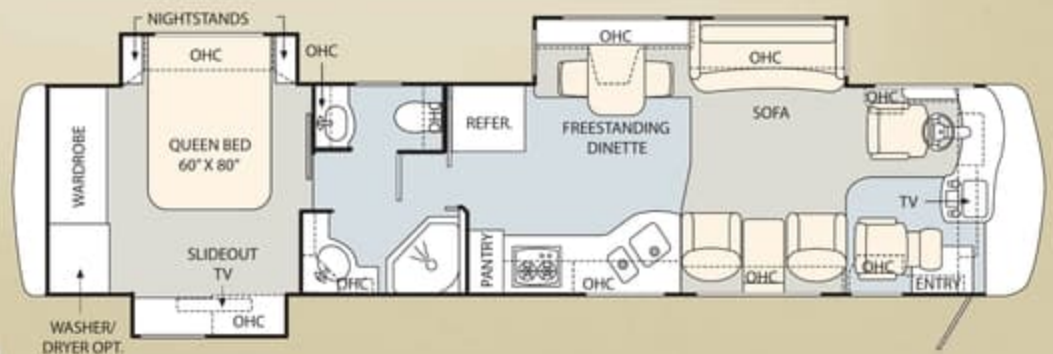
- King Bed (70" x 80")
- Queen Air Mattress with Digital Remote
- King Air Mattress with Digital Remote
- Curbside: Leather Sleeper J-Lounge with Drawer
- King Air Mattress with Digital Remote
- Bathtub (N/A: 44 Sandia IV)
- Bedroom Desk with Fabric Swivel Rocker (44 Denali III R, 44 Sandia IV)



40 RAINIER II



40 RAINIER III F



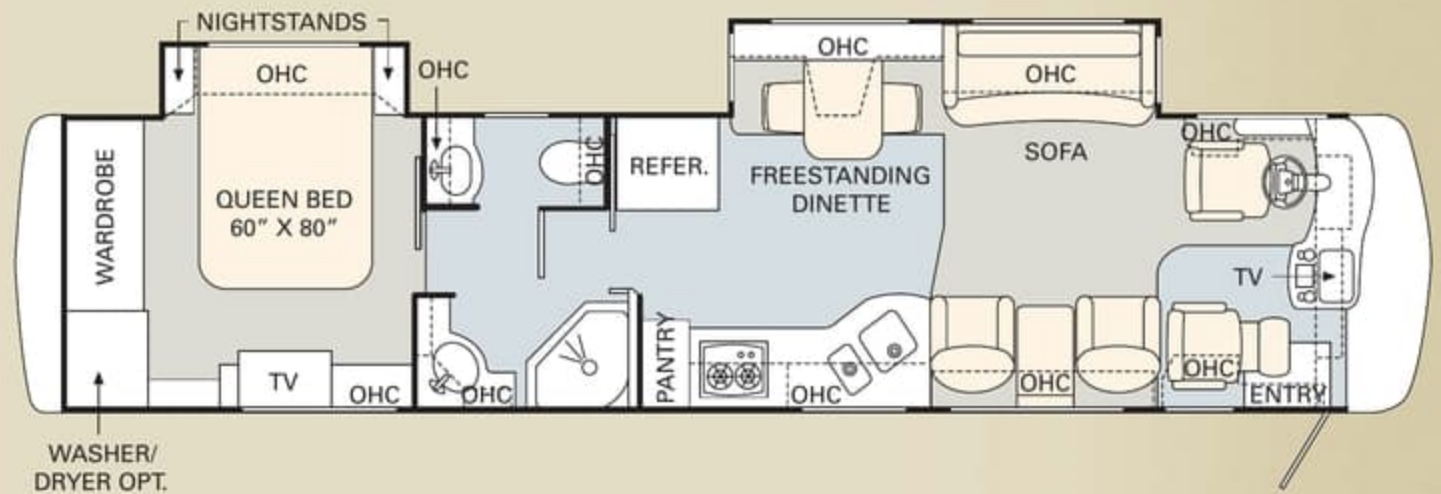
40 RAINIER III R

You'll notice that the models of The Executive are named after some of the most majestic mountain peaks. Along with the power to take on any mountain climb with ease, this distinctive coach is available in a wide range of innovative floorplans — each designed to provide a truly higher standard of living.

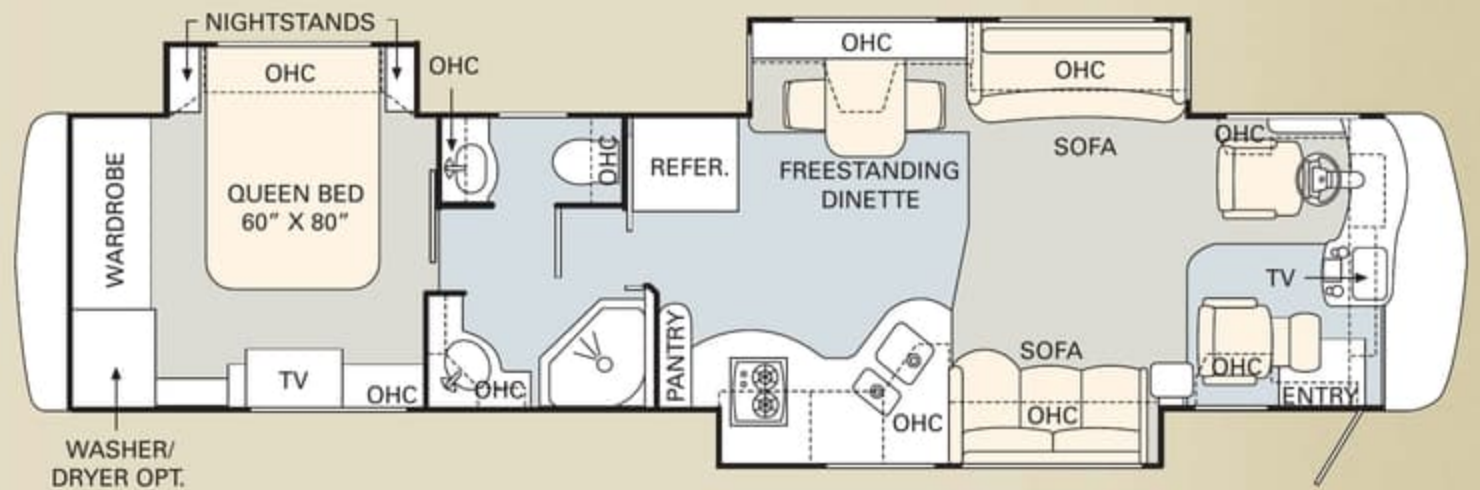
Furniture Options:

- King Bed (70" x 80")
- Queen Air Mattress with Digital Remote
- King Air Mattress with Digital Remote
- Curbside: Leather Sleeper J-Lounge with Drawer
- King Air Mattress with Digital Remote
- Bathtub (N/A: 44 Sandia IV)
- Bedroom Desk with Fabric Swivel Rocker (44 Denali IIIR, 44 Sandia IV)

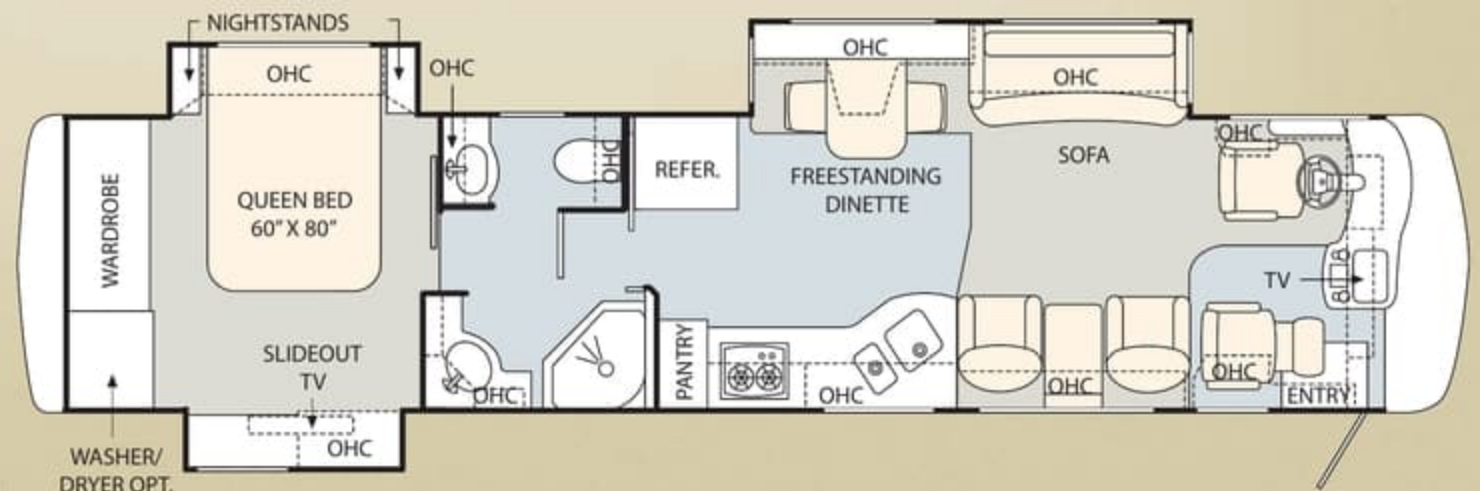
 TILE  CARPET



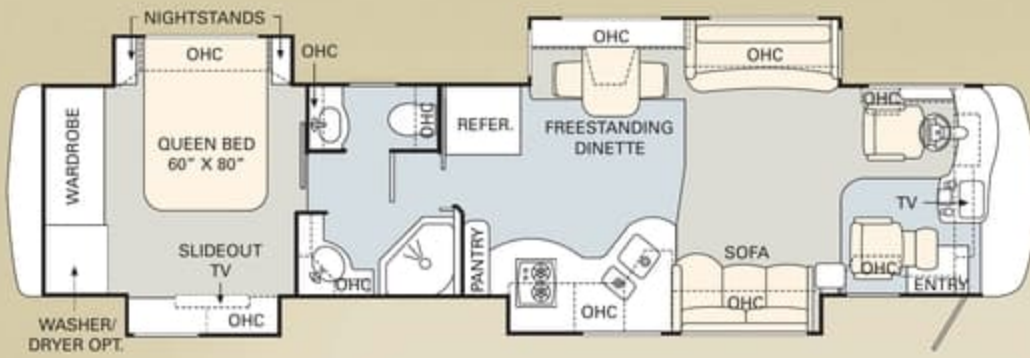
40 RAINIER II



40 RAINIER IIIF



40 RAINIER IIIR



40 RAINIER IV



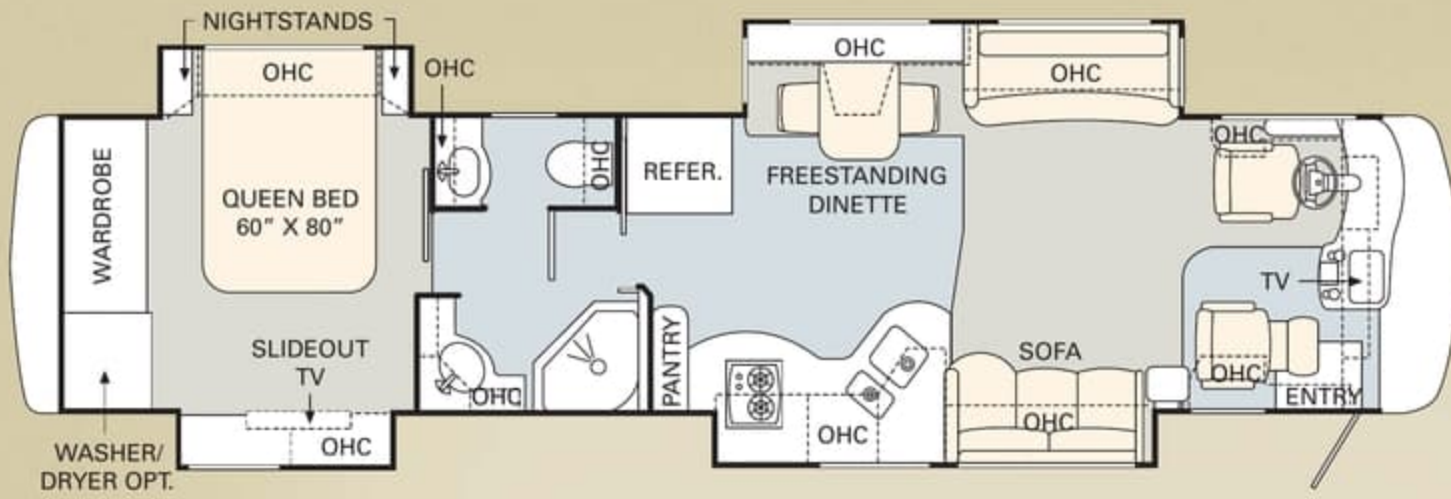
44 DENALI III R



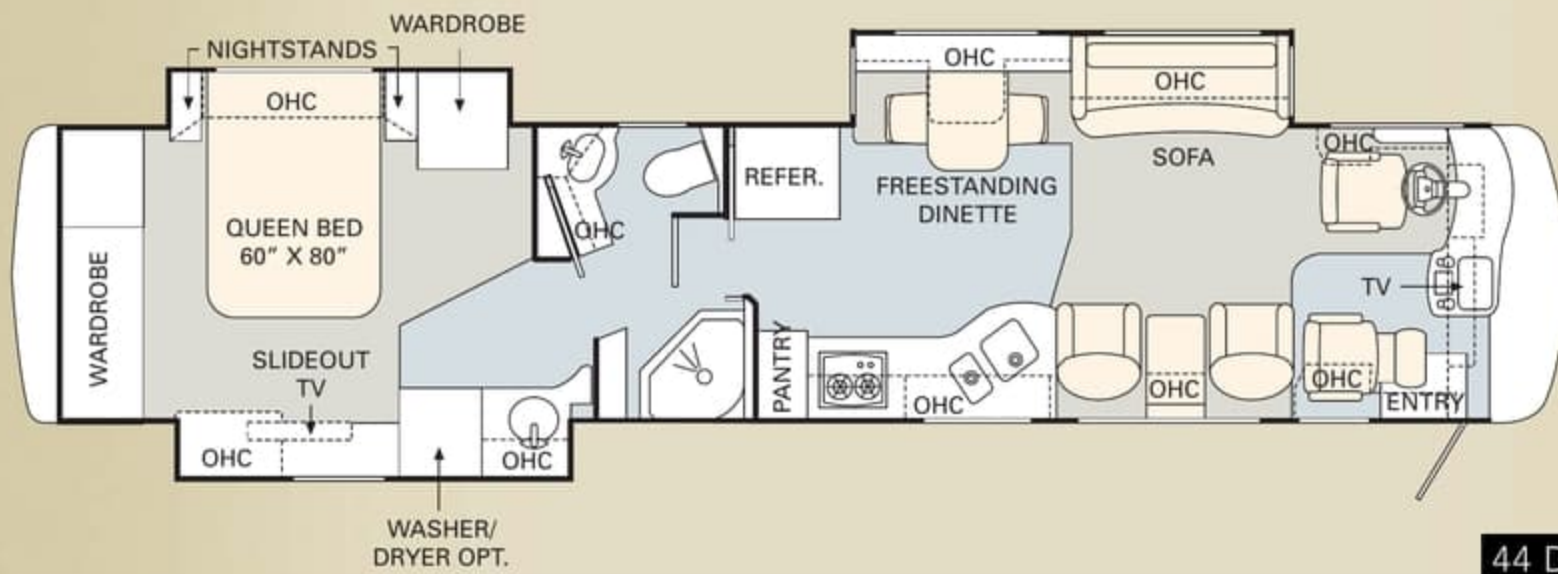
44 SANDIA IV



45 MATTERHORN IV



40 RAINIER IV



44 DENALI III R



44 SANDIA IV



45 MATTERHORN IV

When you think Monaco, you think impeccable styling. And 2006 is no exception. No matter where your tastes lie — from traditional to contemporary, conservative to bold — we give you more ways to turn your motorhome into your dream home.

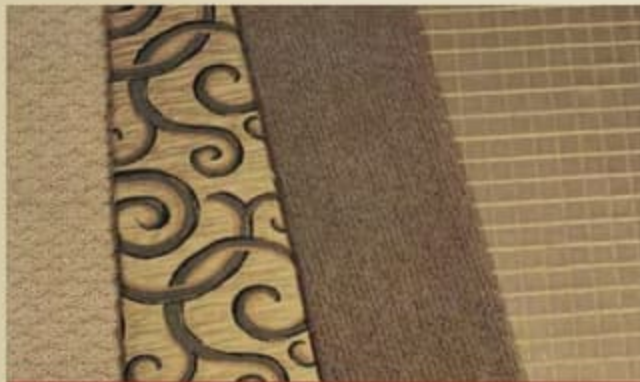
Better Stain Protection
 Manufactured in, not added on. For added protection against stains, Dupont Teflon® soil repellent is applied to virtually all upholstery fabric during the finishing process for superior coverage.*



*Brand and application of upholstery fabric protection may vary depending on date recreational vehicle was manufactured.



- A Carpet
- B Dinette
- C Sofa
- D Bedspread



FRESCO II



CITY SCAPE II



NATURAL OAK



STAINED OAK



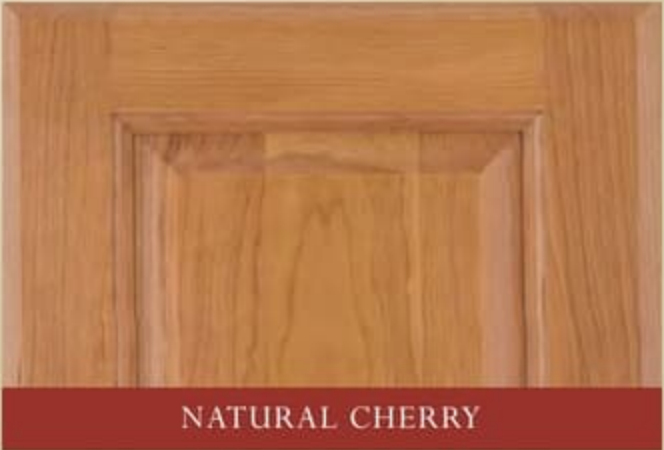
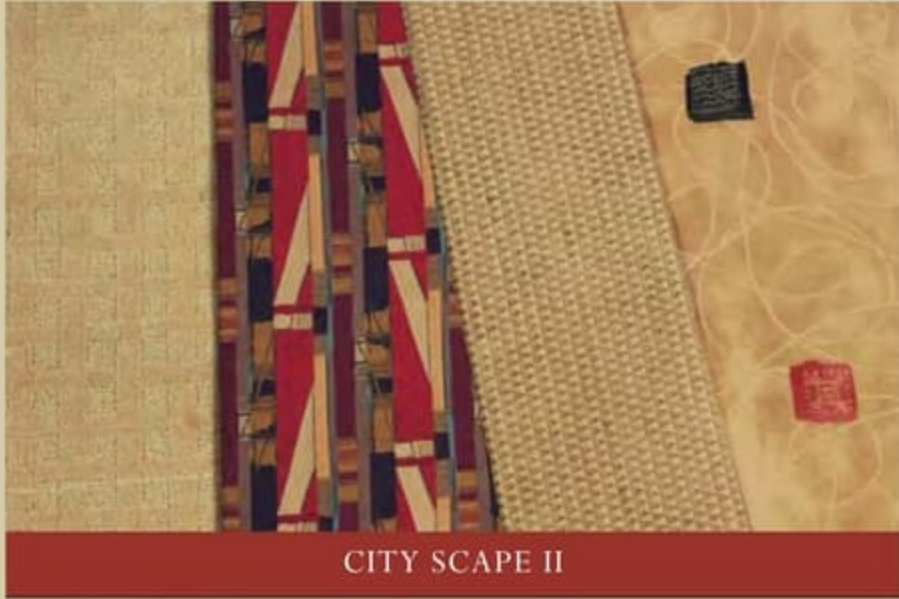
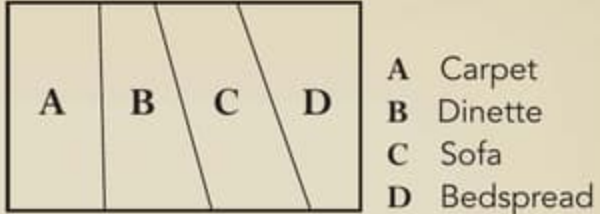
NATURAL CHERRY

When you think Monaco, you think impeccable styling. And 2006 is no exception. No matter where your tastes lie — from traditional to contemporary, conservative to bold — we give you more ways to turn your motorhome into your dream home.

Better Stain Protection
 Manufactured in, not added on. For added protection against stains, Dupont Teflon® soil repellent is applied to virtually all upholstery fabric during the finishing process for superior coverage.*



* Brand and application of upholstery fabric protection may vary depending on date recreational vehicle was manufactured.





SCARLET SONNET



TOPAZ MEDLEY



RALPH LAUREN LANDSDOWN II



STAINED CHERRY



NATURAL MAPLE



SPICED MAPLE



SCARLET SONNET



TOPAZ MEDLEY



RALPH LAUREN LANDSDOWN II



STAINED CHERRY



NATURAL MAPLE



SPICED MAPLE

	Weight Ratings (Lbs.)					Measurements						Tank Capacity (Gal.) ²				
	Gross Vehicle	Gross Combined ¹	Front Gross Axle	Rear Gross Axle	Tag Axle		Wheelbase	Overall Length	Overall Height (with A/C) (add 5" for satellite option)	Interior Height	Interior Width	Exterior Width	Gray Tank	Black Tank	Fresh Tank	LP Tank ³
40 Rainier II	48,160	58,160	15,160	23,000	10,000	247"	41' 4"	12' 4"	82"	96"	100.5"	56	56	100	38	150
40 Rainier IIIF	48,160	58,160	15,160	23,000	10,000	247"	41' 4"	12' 4"	82"	96"	100.5"	56	56	100	38	150
40 Rainier IIIR	48,160	58,160	15,160	23,000	10,000	247"	41' 4"	12' 4"	82"	96"	100.5"	56	56	100	38	150
40 Rainier IV	48,160	58,160	15,160	23,000	10,000	247"	41' 4"	12' 4"	82"	96"	100.5"	56	56	100	38	150
44 Denali IIIR	48,160	58,160	15,160	23,000	10,000	271"	44' 4"	12' 4"	82"	96"	100.5"	56	56	100	38	150
44 Sandia IV	48,160	58,160	15,160	23,000	10,000	271"	44' 4"	12' 4"	82"	96"	100.5"	56	56	100	38	150
45 Matterhorn IV	48,160	58,160	15,160	23,000	10,000	279"	44' 10"	12' 4"	82"	96"	100.5"	56	56	100	38	150

1. Towing capacity is limited by GCWR; your vehicle's towing capacity is the difference between the GCWR and the actual vehicle weight, including all water, fuel, passengers and cargo. Your towed vehicle should be equipped with auxiliary brakes if the weight of the towed vehicle exceeds 1,000 lbs. Consult your owner's manual for further towing information.

2. All tank capacities are estimated based upon calculations provided by the tank manufacturers and represent approximate capacities. The actual "usable capacity" may be greater or less than the estimated capacities based upon fabrication and installation of the tanks.

3. Actual filled LP capacity is 80% of listing due to safety shut-off required on tank.

The actual overall length of the recreational vehicle may differ from that indicated in the brochure due to variances in the manufacturing process and/or installed components. The actual length may be greater or less than that indicated. Due to the large variety of options and floorplan arrangements available to our customers, actual weights for each unit can differ significantly. Monaco Coach provides a weight sticker on each unit we produce which includes that unit's tank capacities and approximate weight. Consult your local Monaco Coach dealer for unit availability and further information. The information printed in this brochure reflects product design, fabrication, and component parts at the date of printing. The manufacturer reserves the right, at any time, to make changes in product design or material or component specifications as its sole option, without notice. This includes the substitution of components of a different brand or trade name which will result in comparable performance. All information printed in this brochure is subject to change after the date of printing. Some features shown or mentioned in this brochure are optional and may only be available in selected floorplans. Photographs may show props or decorations that are not standard equipment on Monaco Coach models. Monaco Coach, the Monaco logo and its design, are registered trademarks. All other products and company names are trademarks and/or registered trademarks of their respective holders. While the color of the motorhome's exterior and the interior fabrics depicted in this sales brochure are fair and reasonable depictions, the colors depicted may not be an exact match of the actual colors because of the variances in photo-processing and variances caused by inserting the photographs within the sales brochure. Due to product improvements, changes during the model year and/or transcription errors that may occur, information represented within this brochure may not be accurate at the time of your purchase. If certain information is significant to your purchasing decision, please confirm the information with your dealer prior to submitting your order. Component part and appliance manufacturers issue limited warranties covering those portions of the recreational vehicle not covered by the Limited Warranties issued by Monaco Coach Corporation. To learn which specific component parts and appliances are excluded from the Limited Warranties issued by Monaco Coach Corporation, please contact your selling dealership or Monaco Coach Corporation directly, or review the warranty packet inside the recreational vehicle.

THERE'S STRENGTH IN OUR NUMBERS.

As you consider your RV purchase, there's one thing we'd like you to keep in mind: Nobody does customer service like Monaco. Period. Our staff is available 24/7/365 to help you with virtually any situation that may arise — with troubleshooting, operational instruction or facilitating repairs at the nearest of our 350 nationwide service centers. In addition, you'll be enrolled in our Owner Advantage Roadside Assistance Program free of charge for your first year of ownership — providing additional emergency assistance, including towing, tire repairs and many more services around the clock. In short, when you purchase an RV from Monaco Coach Corporation, you get a wider array of benefits than any other manufacturer can offer. To see it all for yourself, call 1-800-634-0855 or 1-800-650-7337 to arrange a tour of one of our state-of-the-art production facilities in Oregon or Indiana.

	Weight Ratings (Lbs.)					Measurements	Measurements					Tank Capacity (Gal.) ²				
	Gross Vehicle	Gross Combined ¹	Front Gross Axle	Rear Gross Axle	Tag Axle		Wheelbase	Overall Length	Overall Height (with A/C) (add 5" for satellite option)	Interior Height	Interior Width	Exterior Width	Gray Tank	Black Tank	Fresh Tank	LP Tank ³
40 Rainier II	48,160	58,160	15,160	23,000	10,000	247"	41' 4"	12' 4"	82"	96"	100.5"	56	56	100	38	150
40 Rainier IIIF	48,160	58,160	15,160	23,000	10,000	247"	41' 4"	12' 4"	82"	96"	100.5"	56	56	100	38	150
40 Rainier IIIR	48,160	58,160	15,160	23,000	10,000	247"	41' 4"	12' 4"	82"	96"	100.5"	56	56	100	38	150
40 Rainier IV	48,160	58,160	15,160	23,000	10,000	247"	41' 4"	12' 4"	82"	96"	100.5"	56	56	100	38	150
44 Denali IIIR	48,160	58,160	15,160	23,000	10,000	271"	44' 4"	12' 4"	82"	96"	100.5"	56	56	100	38	150
44 Sandia IV	48,160	58,160	15,160	23,000	10,000	271"	44' 4"	12' 4"	82"	96"	100.5"	56	56	100	38	150
45 Matterhorn IV	48,160	58,160	15,160	23,000	10,000	279"	44' 10"	12' 4"	82"	96"	100.5"	56	56	100	38	150

- 1 Towing capacity is limited by GCWR; your vehicle's towing capacity is the difference between the GCWR and the actual vehicle weight, including all water, fuel, passengers and cargo. Your towed vehicle should be equipped with auxiliary brakes if the weight of the towed vehicle exceeds 1,000 lbs. Consult your owner's manual for further towing information.
- 2 All tank capacities are estimated based upon calculations provided by the tank manufacturers and represent approximate capacities. The actual "usable capacity" may be greater or less than the estimated capacities based upon fabrication and installation of the tanks.
- 3 Actual filled LP capacity is 80% of listing due to safety shut-off required on tank.

The actual overall length of the recreational vehicle may differ from that indicated in the brochure due to variances in the manufacturing process and/or installed components. The actual length may be greater or less than that indicated. Due to the large variety of options and floorplan arrangements available to our customers, actual weights for each unit can differ significantly. Monaco Coach provides a weight sticker on each unit we produce which includes that unit's tank capacities and approximate weight. Consult your local Monaco Coach dealer for unit availability and further information. The information printed in this brochure reflects product design, fabrication, and component parts at the date of printing. The manufacturer reserves the right, at any time, to make changes in product design or material or component specifications as its sole option, without notice. This includes the substitution of components of a different brand or trade name which will result in comparable performance. All information printed in this brochure is subject to change after the date of printing. Some features shown or mentioned in this brochure are optional and may only be available in selected floorplans. Photographs may show props or decorations that are not standard equipment on Monaco Coach models. Monaco Coach, the Monaco logo and its design, are registered trademarks. All other products and company names are trademarks and/or registered trademarks of their respective holders. While the color of the motorhome's exterior and the interior fabrics depicted in this sales brochure are fair and reasonable depictions, the colors depicted may not be an exact match of the actual colors because of the variances in photo-processing and variances caused by inserting the photographs within the sales brochure. Due to product improvements, changes during the model year and/or transcription errors that may occur, information represented within this brochure may not be accurate at the time of your purchase. If certain information is significant to your purchasing decision, please confirm the information with your dealer prior to submitting your order. Component part and appliance manufacturers issue limited warranties covering those portions of the recreational vehicle not covered by the Limited Warranties issued by Monaco Coach Corporation. To learn which specific component parts and appliances are excluded from the Limited Warranties issued by Monaco Coach Corporation, please contact your selling dealership or Monaco Coach Corporation directly, or review the warranty packet inside the recreational vehicle.

THERE'S STRENGTH IN OUR NUMBERS.

As you consider your RV purchase, there's one thing we'd like you to keep in mind: Nobody does customer service like Monaco. Period. Our staff is available 24/7/365 to help you with virtually any situation that may arise — with troubleshooting, operational instruction or facilitating repairs at the nearest of our 350 nationwide service centers. In addition, you'll be enrolled in our Owner Advantage Roadside Assistance Program free of charge for your first year of ownership — providing additional emergency assistance, including towing, tire repairs and many more services around the clock. In short, when you purchase an RV from Monaco Coach Corporation, you get a wider array of benefits than any other manufacturer can offer. To see it all for yourself, call 1-800-634-0855 or 1-800-650-7337 to arrange a tour of one of our state-of-the-art production facilities in Oregon or Indiana.

BODY CONSTRUCTION

Heavy-Duty Steel Superstructure with Steel Cage Cockpit Construction
 Seamless One-Piece Molded Crowned Fiberglass Roof
 All-Season Foam Insulated Roof
 Laminated Gel Coat Fiberglass Walls
 Five-Layer Flooring with Two Layers of OSB Flooring
 Deluxe Full-Body Paint
 One-Piece Front Windshield
 Triple Head Power Controlled Heated Chrome Exterior Mirrors with Turn Indicator Lights
 Halogen Fog Lamps
 Daytime Running Lights

Recessed Side Docking Lights
 Roof-Mounted Dual Trumpet Air Horns
 Entry Step Storage
 Insulated Aluminum Baggage Doors with Power Locks
 Lined Pass-Through Storage Compartments
 Interlocking Aluminum Framed Slide-Out Houses
 Interior Paneling with 1 1/2" Insulation
 Curbside Pantographic Baggage Doors with Electric Locks (Double Slide-Out Only) (40 Rainier II)

Rear Ladder
 Monaco Full-Length Mud Flap with Stainless Steel Logo
 Electric Bay Door Latches

OPTIONS

3M® Film Front Mask
 Storage Bay Slide-Out Tray (One Side)
 Storage Bay Slide-Out Tray (Complete Pass-Through)
 Electric Slide-Out Storage Tray (Complete Pass-Through)
 Exterior Sunscreens

CHASSIS/ENGINE/SUSPENSION

Roadmaster S-Series
 Semi-Monocoque Chassis
 Cummins® ISM-II 500 HP Engine with Allison® 4000 MH 6-Speed World Transmission and Electronic Shifter
 Torque: 1,450 lbs./ft. Max.
 Engine Displacement 661"/11.0L
 Dual Fuel Fill
 200 Amp Alternator
 Rear Axle Ratio: 4.30:1
 Tires: 295/80R/22.5
 Polished Aluminum Wheels
 Full-Cushion Air Glide Suspension with Ten Outboard Mounted Air Bags and Ten Bilstein® Shock Absorbers

Air Suspension with Ping Tank
 Automatic Traction Control
 Anti-Lock Braking System with Front Disc Brakes and Rear Drum Brakes
 Tag Axle with Anti-Lock Braking System
 Auto Slack Adjusters on Brakes
 Two-Stage Jacobs Engine Brake
 Engine Block Heater with Switch on Dash
 Automatic Air Leveling System
 Undercoating
 10,000 Lb. Hitch Receiver and 7/4-Way Trailer Plug
 Remote Inflation Connector

OPTIONS

Series 60 Detroit Diesel 515 HP Engine with Allison® 4000 MH 6-Speed World Transmission and Electronic Shifter, Torque: 1,650 lbs./ft.; 858 Cu. In. Engine Displacement
 Cummins® ISX-525 HP Engine with Allison® 4000 MH 6-Speed World Transmission and Electronic Shifter, Torque: 1,650 lbs./ft.; 912 Cu. In. Engine Displacement
 Hydraulic Leveling
 Dual Leveling System

COCKPIT

Fiberglass Automotive Dash with Eagle Burlwood Instrumentation Panel, Two-Tone Vinyl, White Gauges with Black Lettering and Gun Metal Bezels
 In-Dash AM/FM Stereo with Multi-Disc CD Changer
 Color Rear Vision System with Audio
 Aladdin™ Video Coach System with Integrated Compass and Temperature Gauge
 CB Radio Prep
 Manual Privacy Drape
 Power Sunvisors
 Pilot and Co-Pilot Side Window
 Manual Sunscreens

Adjustable Brake and Accelerator Pedals
 Lighted VIP Smartwheel® with Controls for Windshield Wipers, ICC and Cruise Control
 Audible Turn Signals
 Cruise Control Light on Dash
 6-Way Power Pilot and Co-Pilot Seats with Fabric Inserts, Electric Lumbar and Heat; Electric Sliding Seat Cushion and Memory Capabilities on Pilot Seat; Power Footrest on Co-Pilot Seat
 12V and 110V Outlet at Dash
 Digital/Analog Cellular Antenna
 Carpet, Driver and Passenger Floor Mats

OPTIONS

Extra-Wide Co-Pilot Seat with Power Footrest
 Power Window Blinds
 Electric Privacy Drape
 CB Radio with Antenna
 GPS Navigation System
 OnStar® Mobile Assistance
 Sirius Satellite Radio System
 SEE-Vision Coach Monitoring System

BODY CONSTRUCTION

Heavy-Duty Steel Superstructure with Steel Cage Cockpit Construction
 Seamless One-Piece Molded Crowned Fiberglass Roof
 All-Season Foam Insulated Roof
 Laminated Gel Coat Fiberglass Walls
 Five-Layer Flooring with Two Layers of OSB Flooring
 Deluxe Full-Body Paint
 One-Piece Front Windshield
 Triple Head Power Controlled Heated Chrome Exterior Mirrors with Turn Indicator Lights
 Halogen Fog Lamps
 Daytime Running Lights

Recessed Side Docking Lights
 Roof-Mounted Dual Trumpet Air Horns
 Entry Step Storage
 Insulated Aluminum Baggage Doors with Power Locks
 Lined Pass-Through Storage Compartments
 Interlocking Aluminum Framed Slide-Out Houses
 Interior Paneling with 1 1/2" Insulation
 Curbside Pantographic Baggage Doors with Electric Locks (Double Slide-Out Only) (40 Rainier II)

Rear Ladder
 Monaco Full-Length Mud Flap with Stainless Steel Logo
 Electric Bay Door Latches

OPTIONS

3M® Film Front Mask
 Storage Bay Slide-Out Tray (One Side)
 Storage Bay Slide-Out Tray (Complete Pass-Through)
 Electric Slide-Out Storage Tray (Complete Pass-Through)
 Exterior Sunscreens

CHASSIS/ENGINE/SUSPENSION

Roadmaster S-Series
 Semi-Monocoque Chassis
 Cummins® ISM-II 500 HP Engine with Allison® 4000 MH 6-Speed World Transmission and Electronic Shifter
 Torque: 1,450 lbs./ft. Max.
 Engine Displacement 661"/11.0L
 Dual Fuel Fill
 200 Amp Alternator
 Rear Axle Ratio: 4:30:1
 Tires: 295/80R/22.5
 Polished Aluminum Wheels
 Full-Cushion Air Glide Suspension with Ten Outboard Mounted Air Bags and Ten Bilstein® Shock Absorbers

Air Suspension with Ping Tank
 Automatic Traction Control
 Anti-Lock Braking System with Front Disc Brakes and Rear Drum Brakes
 Tag Axle with Anti-Lock Braking System
 Auto Slack Adjusters on Brakes
 Two-Stage Jacobs Engine Brake
 Engine Block Heater with Switch on Dash
 Automatic Air Leveling System
 Undercoating
 10,000 Lb. Hitch Receiver and 7/4-Way Trailer Plug
 Remote Inflation Connector

OPTIONS

Series 60 Detroit Diesel 515 HP Engine with Allison® 4000 MH 6-Speed World Transmission and Electronic Shifter, Torque: 1,650 lbs./ft.; 858 Cu. In. Engine Displacement
 Cummins® ISX-525 HP Engine with Allison® 4000 MH 6-Speed World Transmission and Electronic Shifter, Torque: 1,650 lbs./ft.; 912 Cu. In. Engine Displacement
 Hydraulic Leveling
 Dual Leveling System

COCKPIT

Fiberglass Automotive Dash with Eagle Burlwood Instrumentation Panel, Two-Tone Vinyl, White Gauges with Black Lettering and Gun Metal Bezels
 In-Dash AM/FM Stereo with Multi-Disc CD Changer
 Color Rear Vision System with Audio
 Aladdin™ Video Coach System with Integrated Compass and Temperature Gauge
 CB Radio Prep
 Manual Privacy Drape
 Power Sunvisors
 Pilot and Co-Pilot Side Window
 Manual Sunscreens

Adjustable Brake and Accelerator Pedals
 Lighted VIP Smartwheel® with Controls for Windshield Wipers, ICC and Cruise Control
 Audible Turn Signals
 Cruise Control Light on Dash
 6-Way Power Pilot and Co-Pilot Seats with Fabric Inserts, Electric Lumbar and Heat; Electric Sliding Seat Cushion and Memory Capabilities on Pilot Seat; Power Footrest on Co-Pilot Seat
 12V and 110V Outlet at Dash
 Digital/Analog Cellular Antenna
 Carpet, Driver and Passenger Floor Mats

OPTIONS

Extra-Wide Co-Pilot Seat with Power Footrest
 Power Window Blinds
 Electric Privacy Drape
 CB Radio with Antenna
 GPS Navigation System
 OnStar® Mobile Assistance
 Sirius Satellite Radio System
 SEE-Vision Coach Monitoring System

APPLIANCES AND ACCESSORIES

Four-Door Refrigerator with Ice Maker and Raised Panel Doors
 Recessed High-Output 2-Burner Cooktop with Flush Mount Covers
 Spacesaver Convection Microwave with Touch Control
 Manual TV Antenna with "Antenna Up" Light on Dash
 Prep for Satellite Receiver
 32" LCD TV Mounted in Front of Co-Pilot Seat
 20" LCD TV in Bedroom

Bedroom Stereo/CD/Clock Radio
 Home Theater System with DVD/VCR/CD Player
 Bedroom DVD/VCR Combo
 Universal Remote System

OPTIONS

Residential Refrigerator (Requires 4 Additional Batteries Option)
 Combination Washer/Dryer

Stackable Washer/Dryer (45 Matterhorn IV)
 Dishwashing Drawer
 37" LCD TV Mounted in Living Area Ceiling
 Fully Automatic Digital Satellite System with Second Receiver for Bedroom
 In-Motion Digital Satellite System with Second Receiver for Bedroom
 Exterior Entertainment Center with Flip Down 20" LCD TV, IR Repeater, AM/FM/CD/DVD/MP3 Player

INTERIOR

Stained or Natural Oak Cabinetry
 Lined Cabinet Shelves
 Dinette Wall Cabinet with Corian® Top
 Built-In Storage Area for Galley Sink Covers
 Bedroom Dresser
 Clothing Hamper in Bedroom
 Low-Friction Roller Drawer Guides
 Recessed Ceiling Design
 Corian® Countertops Throughout
 Integrated Solid Surface Sinks in Vanity and Galley
 Ceramic Tile Backsplash in Galley and Bath Areas
 Tapered Glass Splash Guard at End of Galley Area

Day/Night Pleated Shades in Living Area and Blackout Shades in Bedroom
 Mini Blinds in Kitchen and Bath
 Wallpaper Throughout
 Corian® Cutting Board
 Four-Compartment Drawer Organizer in Kitchen
 Designer Textured Carpet in Living Area and Bedroom
 Ceramic Tile Flooring in Kitchen, Bathroom and Entry
 Raised Panel Door for Private Bath
 Bedspread and Pillows
 Nightstands with Corian® Tops
 Corian® Window Sills in Living Area
 Recessed Galley Area Surround
 Sound Speakers

Satin Nickel Finish Hardware Throughout
 Decorative Hardwood Slide-Out Fascia

OPTIONS

Interior Decors: City Scape II, Fresco II, Scarlet Sonnet, Topaz Medley
 Ralph Lauren Decor: Landsdown II
 Stained or Natural Cherry, Natural or Spiced Maple
 Sculptured Carpeting in Living Area
 Plank Flooring in Kitchen and Bath

FURNITURE

Legless Side-Slide Corian® Dinette Table with Two Freestanding Dinette Chairs and Two Folding Chairs
 Roadside: Fabric Sleeper Sofa with Drawer
 Curbside: Fabric Sleeper J-Lounge with Drawer (40 Rainier IIIF, 40 Rainier IV, 44 Sandia IV, 45 Matterhorn IV)
 Curbside: Two Fabric Swivel Rockers (40 Rainier II, 40 Rainier IIIR, 44 Denali IIIR)

Curbside: Living Area Table (40 Rainier II, 40 Rainier IIIR, 44 Denali IIIR)
 Additional Bedroom Wardrobe (44 Denali IIIR, 44 Sandia IV)
 Queen Mattress (60" x 80")

OPTIONS

King Bed (70" x 80")
 Queen Air Mattress with Digital Remote

King Air Mattress with Digital Remote
 Wraparound Computer Table with Leather Euro-Recliner and Ottoman
 Curbside: Leather Sleeper J-Lounge with Drawer
 Bedroom Desk with Fabric Swivel Rocker (44 Denali IIIR, 44 Sandia IV)
 Sectional Booth Dinette

SAFETY

Back-Up Alarm
 Fire Extinguisher
 Deadbolt Lock on Entrance Door
 Lighted Interior and Exterior Grab Handles
 120V GFI Protected Circuit
 LP Gas Detector

Smoke Detector
 Carbon Monoxide Detector
 Integrated Pilot and Co-Pilot Three Point Seat Belts
 Third Brake Safety Light
 Egress Window

OPTIONS

Deluxe Security Alarm System
 Security Safe
 Collision Avoidance System

APPLIANCES AND ACCESSORIES

Four-Door Refrigerator with Ice Maker and Raised Panel Doors
 Recessed High-Output 2-Burner Cooktop with Flush Mount Covers
 Spacesaver Convection Microwave with Touch Control
 Manual TV Antenna with "Antenna Up" Light on Dash
 Prep for Satellite Receiver
 32" LCD TV Mounted in Front of Co-Pilot Seat
 20" LCD TV in Bedroom

Bedroom Stereo/CD/Clock Radio
 Home Theater System with DVD/VCR/CD Player
 Bedroom DVD/VCR Combo
 Universal Remote System

OPTIONS

Residential Refrigerator (Requires 4 Additional Batteries Option)
 Combination Washer/Dryer

Stackable Washer/Dryer (45 Matterhorn IV)
 Dishwashing Drawer
 37" LCD TV Mounted in Living Area Ceiling
 Fully Automatic Digital Satellite System with Second Receiver for Bedroom
 In-Motion Digital Satellite System with Second Receiver for Bedroom
 Exterior Entertainment Center with Flip Down 20" LCD TV, IR Repeater, AM/FM/CD/DVD/MP3 Player

INTERIOR

Stained or Natural Oak Cabinetry
 Lined Cabinet Shelves
 Dinette Wall Cabinet with Corian® Top
 Built-In Storage Area for Galley Sink Covers
 Bedroom Dresser
 Clothing Hamper in Bedroom
 Low-Friction Roller Drawer Guides
 Recessed Ceiling Design
 Corian® Countertops Throughout
 Integrated Solid Surface Sinks in Vanity and Galley
 Ceramic Tile Backsplash in Galley and Bath Areas
 Tapered Glass Splash Guard at End of Galley Area

Day/Night Pleated Shades in Living Area and Blackout Shades in Bedroom
 Mini Blinds in Kitchen and Bath
 Wallpaper Throughout
 Corian® Cutting Board
 Four-Compartment Drawer Organizer in Kitchen
 Designer Textured Carpet in Living Area and Bedroom
 Ceramic Tile Flooring in Kitchen, Bathroom and Entry
 Raised Panel Door for Private Bath
 Bedspread and Pillows
 Nightstands with Corian® Tops
 Corian® Window Sills in Living Area
 Recessed Galley Area Surround
 Sound Speakers

Satin Nickel Finish Hardware Throughout
 Decorative Hardwood Slide-Out Fascia

OPTIONS

Interior Decors: City Scape II, Fresco II, Scarlet Sonnet, Topaz Medley
 Ralph Lauren Decor: Landsdown II
 Stained or Natural Cherry, Natural or Spiced Maple
 Sculptured Carpeting in Living Area
 Plank Flooring in Kitchen and Bath

FURNITURE

Legless Side-Slide Corian® Dinette Table with Two Freestanding Dinette Chairs and Two Folding Chairs
 Roadside: Fabric Sleeper Sofa with Drawer
 Curbside: Fabric Sleeper J-Lounge with Drawer (40 Rainier IIIF, 40 Rainier IV, 44 Sandia IV, 45 Matterhorn IV)
 Curbside: Two Fabric Swivel Rockers (40 Rainier II, 40 Rainier IIIR, 44 Denali IIIR)

Curbside: Living Area Table (40 Rainier II, 40 Rainier IIIR, 44 Denali IIIR)
 Additional Bedroom Wardrobe (44 Denali IIIR, 44 Sandia IV)
 Queen Mattress (60" x 80")

OPTIONS

King Bed (70" x 80")
 Queen Air Mattress with Digital Remote

King Air Mattress with Digital Remote
 Wraparound Computer Table with Leather Euro-Recliner and Ottoman
 Curbside: Leather Sleeper J-Lounge with Drawer
 Bedroom Desk with Fabric Swivel Rocker (44 Denali IIIR, 44 Sandia IV)
 Sectional Booth Dinette

SAFETY

Back-Up Alarm
 Fire Extinguisher
 Deadbolt Lock on Entrance Door
 Lighted Interior and Exterior Grab Handles
 120V GFI Protected Circuit
 LP Gas Detector

Smoke Detector
 Carbon Monoxide Detector
 Integrated Pilot and Co-Pilot Three Point Seat Belts
 Third Brake Safety Light
 Egress Window

OPTIONS

Deluxe Security Alarm System
 Security Safe
 Collision Avoidance System

ELECTRICAL SYSTEMS AND LIGHTS

50 Amp 120/240V Distribution Panel and Power Cord with Quick Disconnect
 Onan® 10.0 kW QD Generator on Power Slide-Out Tray with Auxiliary Start Switch and Automatic Temperature Start
 2,800 Watt Pure Sine Wave Inverter with Auto Gen Start and Auto Temp Start
 Halogen Map Lights above Driver/Passenger Seating
 Decorative Lighting in Living Area and Bedroom
 Cosmetic Vanity Lights in Bathroom
 Switches for Bed Decorative Lights on Both Sides of Bed
 Recessed Halogen Lighting under Living Area and Dinette Overhead

Halogen Lighting in Ceiling Throughout
 Accent Rope Lighting Throughout Coach
 Lighted Utility Center
 Underhood Utility Light
 120V Outlet in Private Bath
 120V Outlet in Bed Base
 120V Receptacles in Outside Storage Compartment
 Porch Light
 Doorbell
 Lighted Exterior Storage Compartments
 Four 6V Deep Cycle House Batteries
 Two 12V Chassis Batteries
 Surge Protector

Multiplex 12V Wiring for Dash/Instrument Panel Gauges and Interior of Coach

OPTIONS

Solar Panel
 Power Cord Reel
 All Electric Coach: Two 2,800 Watt Pure Sine Wave Inverters and 5 AGM Batteries, 270 Amp Alternator, Residential Refrigerator, Princess Two-Burner Cooktop and One Additional Solar Panel (N/A: 44 Denali III, 44 Sandia IV, 45 Matterhorn IV)
 Four Additional 6V House Batteries

PLUMBING AND LP SYSTEMS

Central Water Filtration System in Service Bay
 Manabloc Water System for Entire Coach
 Insulated Systems Compartment with Easy Access to Hook-Up
 Water Pump Switch in Galley, Bathroom and Service Bay
 China Toilet

Super Service Center
 Solid Surface Shower with Tile Accent and Shower Caddy
 Shower Head Volume Control
 Black Holding Tank Rinsing System
 Outside Faucet with Hot and Cold Water
 Power Water Hose Reel
 Soap Dispenser in Kitchen

OPTIONS

RV Sanicon Tank Drainage System
 Ozone Water Filter at Kitchen Sink
 Insta-Hot® Water System
 Bathtub (N/A: 44 Sandia IV)

HEATING, VENTS AND AIR CONDITIONING

Aqua-Hot® Heating System
 Two Low-Profile Ducted 15,000 BTU Roof A/C with Wall Thermostat and Heat Pump (40 Rainier II, 40 Rainier III, 40 Rainier IIII, 40 Rainier IV)

Three Low-Profile Ducted 15,000 BTU Roof A/C with Wall Thermostat and Heat Pump (N/A: 40 Rainier II, 40 Rainier III, 40 Rainier IIII, 40 Rainier IV)
 Electronic AC/Heat Climate Control System
 Center Defroster Vents

12V Attic Fan in Bathroom and in Private Lavatory
 12V Attic Fan with Wall Thermostat in Kitchen

OPTIONS

One Low-Profile 110V Baseboard Heater

WINDOWS, DOORS AND AWNINGS

Flush Mount Radius Dual Pane Safety Glass Dark Tinted Windows
 Front Entry Door with Air Seal and Removable Top Screen

Girard® Front Door Awning (Triple and Quad Slide-Outs with Living Area Curbside Slide Only)
 Keyless Remote Entry System with Pocket Remote
 Tinted Skylight in Bathroom

Topper Slide-Out Awnings All Houses
 Window Awnings on all Slide-Out House Windows (N/A on Passenger Side Front Slide-Out Windows)
 Girard® Automatic Patio Awning

ELECTRICAL SYSTEMS AND LIGHTS

50 Amp 120/240V Distribution Panel and Power Cord with Quick Disconnect
 Onan® 10.0 kW QD Generator on Power Slide-Out Tray with Auxiliary Start Switch and Automatic Temperature Start
 2,800 Watt Pure Sine Wave Inverter with Auto Gen Start and Auto Temp Start
 Halogen Map Lights above Driver/Passenger Seating
 Decorative Lighting in Living Area and Bedroom
 Cosmetic Vanity Lights in Bathroom
 Switches for Bed Decorative Lights on Both Sides of Bed
 Recessed Halogen Lighting under Living Area and Dinette Overhead

Halogen Lighting in Ceiling Throughout
 Accent Rope Lighting Throughout Coach
 Lighted Utility Center
 Underhood Utility Light
 120V Outlet in Private Bath
 120V Outlet in Bed Base
 120V Receptacles in Outside Storage Compartment
 Porch Light
 Doorbell
 Lighted Exterior Storage Compartments
 Four 6V Deep Cycle House Batteries
 Two 12V Chassis Batteries
 Surge Protector

Multiplex 12V Wiring for Dash/Instrument Panel Gauges and Interior of Coach

OPTIONS

Solar Panel
 Power Cord Reel
 All Electric Coach: Two 2,800 Watt Pure Sine Wave Inverters and 5 AGM Batteries, 270 Amp Alternator, Residential Refrigerator, Princess Two-Burner Cooktop and One Additional Solar Panel (N/A: 44 Denali III, 44 Sandia IV, 45 Matterhorn IV)
 Four Additional 6V House Batteries

PLUMBING AND LP SYSTEMS

Central Water Filtration System in Service Bay
 Manabloc Water System for Entire Coach
 Insulated Systems Compartment with Easy Access to Hook-Up
 Water Pump Switch in Galley, Bathroom and Service Bay
 China Toilet

Super Service Center
 Solid Surface Shower with Tile Accent and Shower Caddy
 Shower Head Volume Control
 Black Holding Tank Rinsing System
 Outside Faucet with Hot and Cold Water
 Power Water Hose Reel
 Soap Dispenser in Kitchen

OPTIONS

RV Sanicon Tank Drainage System
 Ozone Water Filter at Kitchen Sink
 Insta-Hot® Water System
 Bathtub (N/A: 44 Sandia IV)

HEATING, VENTS AND AIR CONDITIONING

Aqua-Hot® Heating System
 Two Low-Profile Ducted 15,000 BTU Roof A/C with Wall Thermostat and Heat Pump (40 Rainier II, 40 Rainier III, 40 Rainier III, 40 Rainier IV)

Three Low-Profile Ducted 15,000 BTU Roof A/C with Wall Thermostat and Heat Pump (N/A: 40 Rainier II, 40 Rainier III, 40 Rainier III, 40 Rainier IV)
 Electronic AC/Heat Climate Control System
 Center Defroster Vents

12V Attic Fan in Bathroom and in Private Lavatory
 12V Attic Fan with Wall Thermostat in Kitchen

OPTIONS

One Low-Profile 110V Baseboard Heater

WINDOWS, DOORS AND AWNINGS

Flush Mount Radius Dual Pane Safety Glass Dark Tinted Windows
 Front Entry Door with Air Seal and Removable Top Screen

Girard® Front Door Awning (Triple and Quad Slide-Outs with Living Area Curbside Slide Only)
 Keyless Remote Entry System with Pocket Remote
 Tinted Skylight in Bathroom

Topper Slide-Out Awnings All Houses
 Window Awnings on all Slide-Out House Windows (N/A on Passenger Side Front Slide-Out Windows)
 Girard® Automatic Patio Awning



Welcome to the first step toward living your dream. You'll discover that it's not so far from here to there. Because Monaco has a coach that's right for every dreamer. Look closely, and you'll find the high-tech, high-style luxury you've dreamed about is also the very best deal under the sun. Point by point, in every price range, Monaco leads the way in performance, comfort and safety. Yes, you're headed for a dream come true. Just take your first step, and climb aboard.

SIGNATURE SERIES

THE EXECUTIVE®

DYNASTY®

WINDSOR®

CAMELOT™

DIPLOMAT®

KNIGHT®

CAYMAN®

LAPALMA®

MONARCH SE®

ESQUIRE™



91320 Coburg Industrial Way, Coburg, OR 97408
800 634-0855

606 Nelson's Pkwy., Wakarusa, IN 46573
800 650-7337

www.monacocoach.com

Monaco Coach Corporation is traded on the NYSE under the listing MNC.
0305 NPN: BROMEXE



Welcome to the first step toward living your dream. You'll discover that it's not so far from here to there. Because Monaco has a coach that's right for every dreamer. Look closely, and you'll find the high-tech, high-style luxury you've dreamed about is also the very best deal under the sun. Point by point, in every price range, Monaco leads the way in performance, comfort and safety. Yes, you're headed for a dream come true. Just take your first step, and climb aboard.



SIGNATURE SERIES

THE EXECUTIVE®

DYNASTY®

WINDSOR®

CAMELOT™

DIPLOMAT®

KNIGHT®

CAYMAN®

LAPALMA®

MONARCH SE®

ESQUIRE™



91320 Coburg Industrial Way, Coburg, OR 97408
800 634-0855

606 Nelson's Pkwy., Wakarusa, IN 46573
800 650-7337

www.monacocoach.com

Monaco Coach Corporation is traded on the NYSE under the listing MNC.
0305 NPN: BROMEXE