

EMBASSY 06



EMBASSY 06

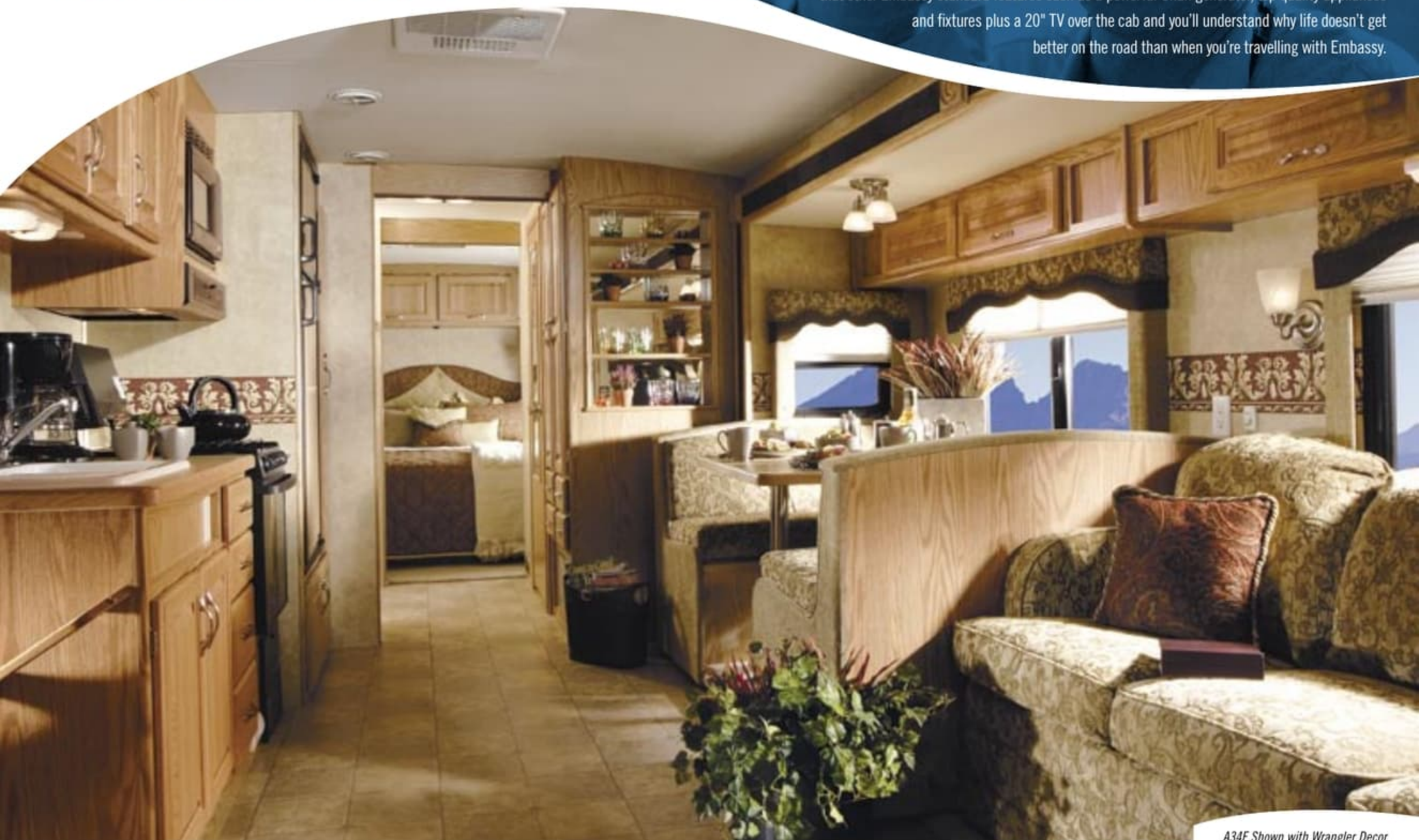
EMBASSY 06



EMBASSY 06

Travel in diplomatic style.

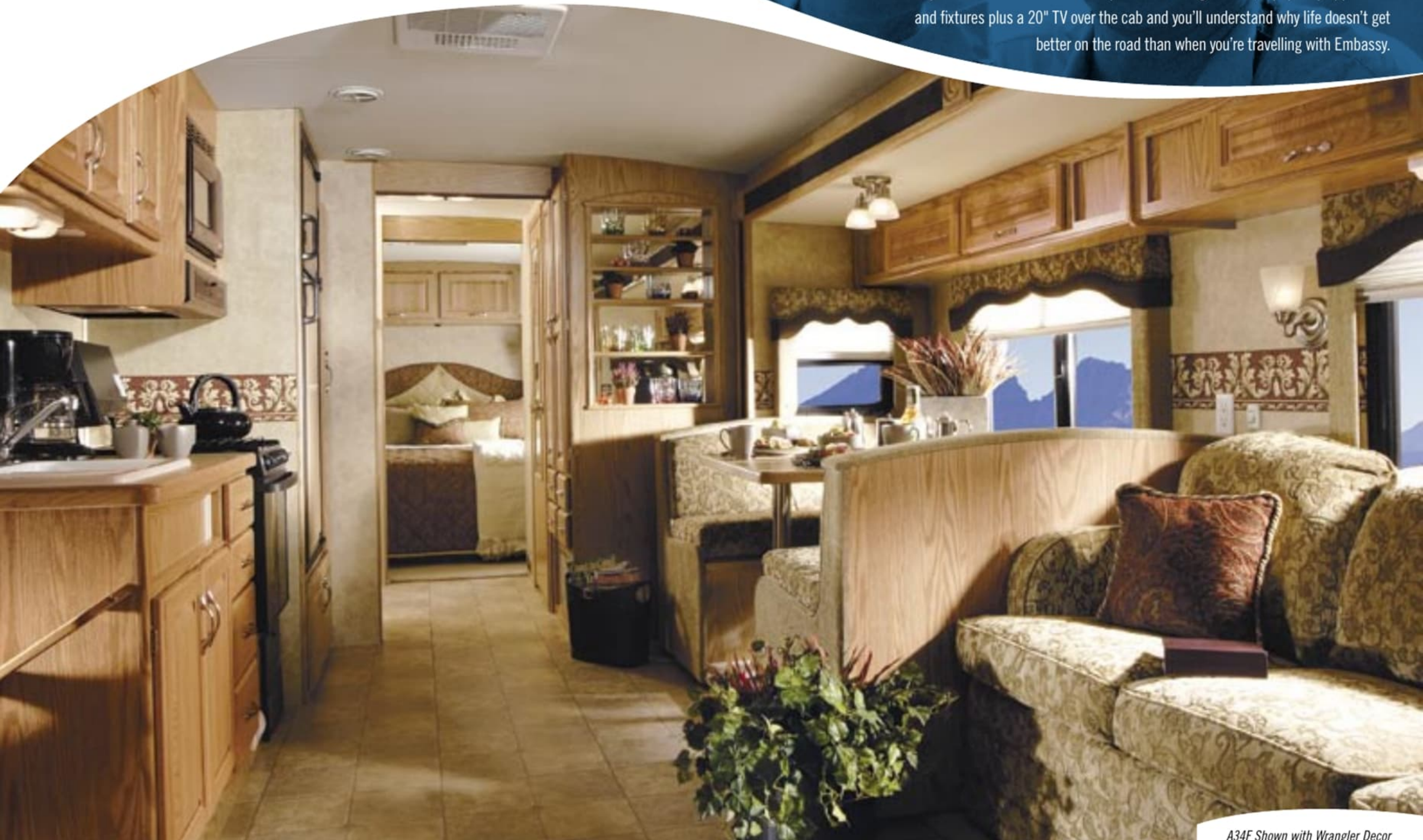
Designed for those who appreciate those little extras that can make all the difference on the road, Embassy is equipped with more features, more storage space, more convenience and more options than most motorhomes in its class. Now for 2006 we've made it even better value by making the formerly optional XL Package standard. This package includes thermal pane windows, a rear auxiliary heater, lights in the baggage compartment and enclosed, insulated and heated holding tanks. Add to that other Embassy standard features such as a powerful Onan generator, top quality appliances and fixtures plus a 20" TV over the cab and you'll understand why life doesn't get better on the road than when you're travelling with Embassy.



A34F Shown with Wrangler Decor

Travel in diplomatic style.

Designed for those who appreciate those little extras that can make all the difference on the road, Embassy is equipped with more features, more storage space, more convenience and more options than most motorhomes in its class. Now for 2006 we've made it even better value by making the formerly optional XL Package standard. This package includes thermal pane windows, a rear auxiliary heater, lights in the baggage compartment and enclosed, insulated and heated holding tanks. Add to that other Embassy standard features such as a powerful Onan generator, top quality appliances and fixtures plus a 20" TV over the cab and you'll understand why life doesn't get better on the road than when you're travelling with Embassy.



A34F Shown with Wrangler Decor



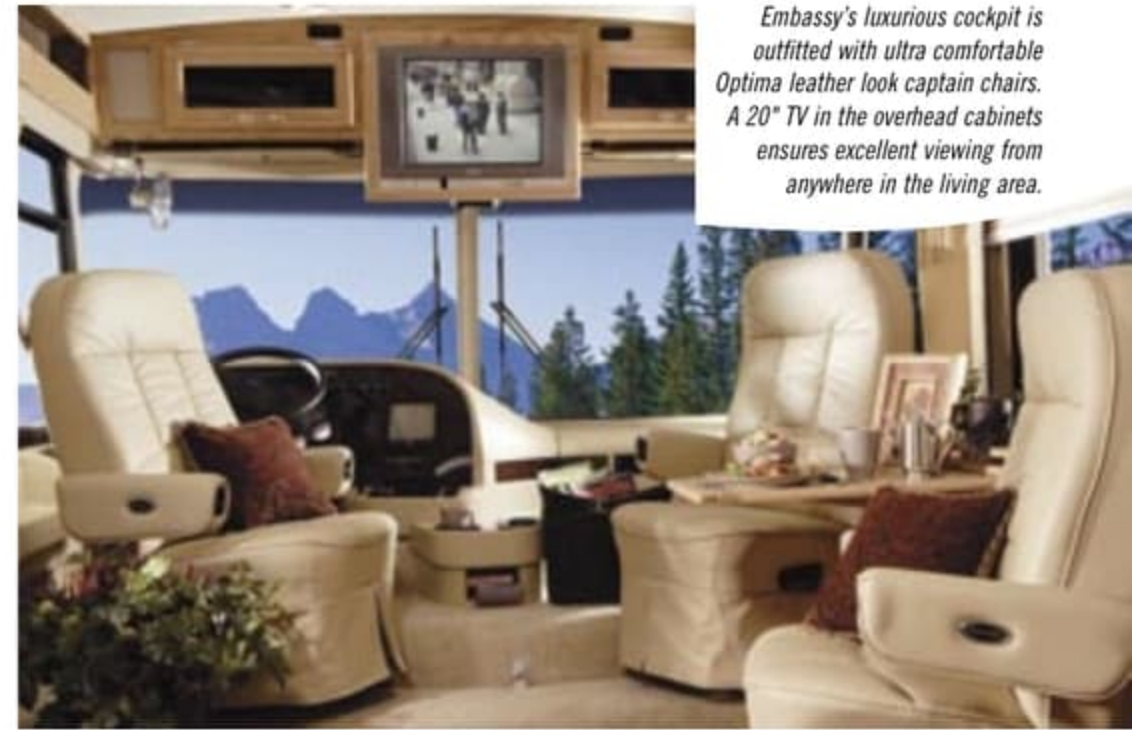
Embassy A30G's spacious galley gives you enough elbow room to get truly creative in the kitchen.



Available on select models only, this neatly designed slide out pantry gives you easy access to your canned and dry goods.



Designed with comfort and aesthetics in mind, Embassy's large, professionally styled bedroom features a number of nice touches including a decorative bedspread with matching headboard and throw pillows. The side wardrobes provide extra clothing storage space.



Embassy's luxurious cockpit is outfitted with ultra comfortable Optima leather look captain chairs. A 20" TV in the overhead cabinets ensures excellent viewing from anywhere in the living area.



Insulated aluminium baggage doors with gas struts and slam latches allow easy access to Embassy's exterior storage compartments.

New for 06

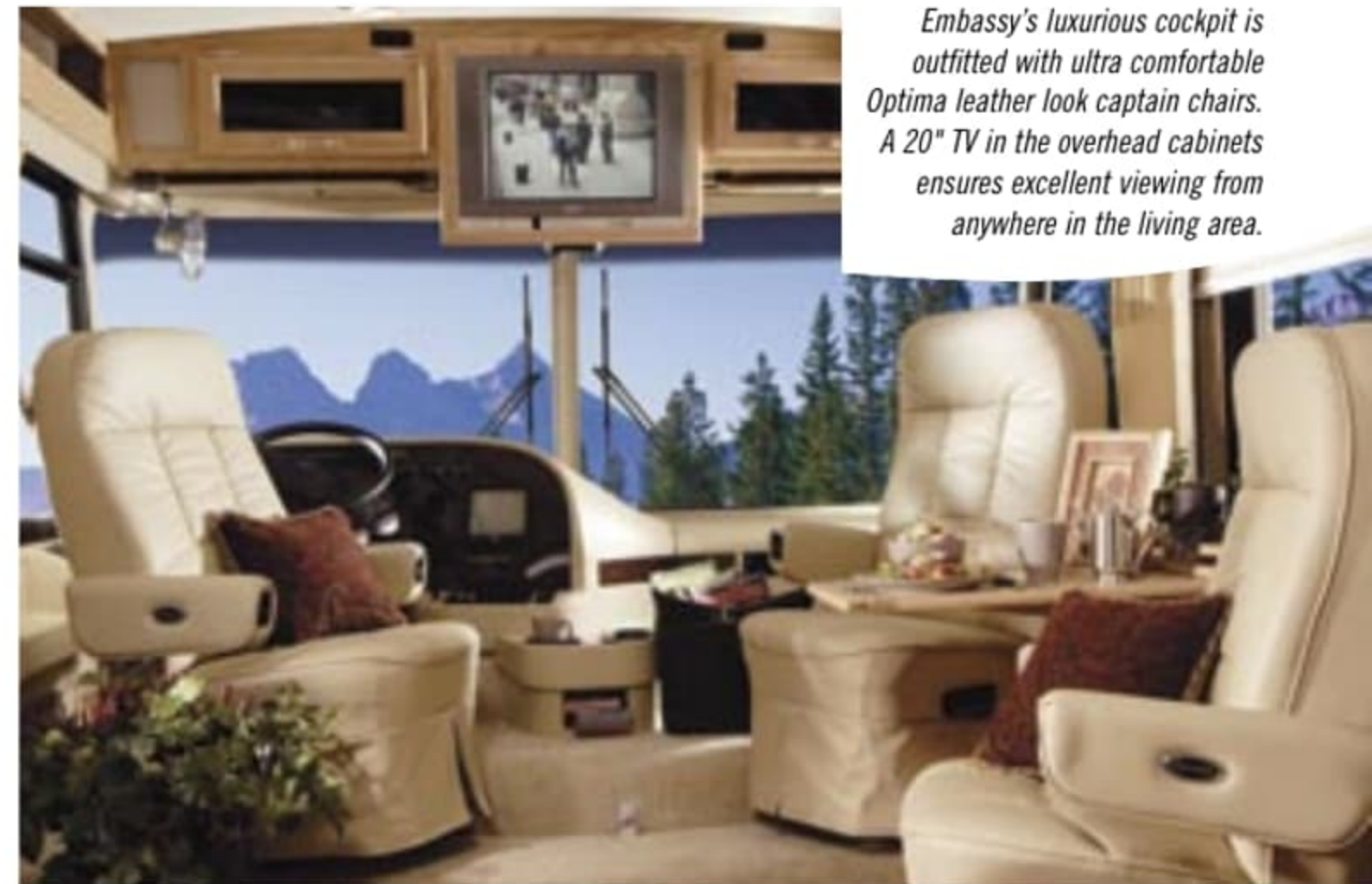
- XL package now standard
- Domed padded vinyl ceiling
- Vacuum bonded Medallion FRP sidewalls
- "Western Oak" — lighter oak stain

Embassy Gas



Embassy A30G's spacious galley gives you enough elbow room to get truly creative in the kitchen.

Available on select models only, this neatly designed slide out pantry gives you easy access to your canned and dry goods.



Embassy's luxurious cockpit is outfitted with ultra comfortable Optima leather look captain chairs. A 20" TV in the overhead cabinets ensures excellent viewing from anywhere in the living area.



Designed with comfort and aesthetics in mind, Embassy's large, professionally styled bedroom features a number of nice touches including a decorative bedspread with matching headboard and throw pillows. The side wardrobes provide extra clothing storage space.



Insulated aluminium baggage doors with gas struts and slam latches allow easy access to Embassy's exterior storage compartments.

New for 06

- XL package now standard
- Domed padded vinyl ceiling
- Vacuum bonded Medallion FRP sidewalls
- "Western Oak" – lighter oak stain

Embassy Gas

Specifications

EMBASSY GAS 2006

	A29	A30G	A34F	A36FB
GVWR – lbs. (kg)	18,000 (8 164)	18,000 (8 164)	20,500 (9 298)	22,000 (10 000)
UVW – lbs. (kg)	12,838 (5 823)	13,889 (6 300)	15,166 (6 879)	16,787 (7 617)
NCC – lbs. (kg)	5,162 (2 341)	4,111 (1 864)	5,334 (2 419)	5,213 (2 383)
Wheelbase – in. (mm)	190 (4 826)	190 (4 826)	228 (5 791)	228 (5 791)
Length – ft. (mm)	29' 3" (8 915)	30' 8" (9 345)	34' 2" (10 425)	35' 9" (10 910)
Width – ft. (mm)	8' 4" (2 534)	8' 4" (2 534)	8' 4" (2 534)	8' 4" (2 534)
Height* – ft. (mm)	11' 6" (3 505)	11' 6" (3 505)	11' 6" (3 505)	11' 6" (3 505)
Water Tank Capacity – U.S. gal. (L)	76 (285)	55 (206)	76 (285)	76 (285)
Holding Tank Capacity – U.S. gal. (L)	78 (295)	78 (295)	78 (295)	78 (295)
Fuel Capacity – U.S. gal. (L)	75 (284)	75 (284)	75 (284)	75 (284)
Propane Capacity – U.S. gal. (L)	25.3 (95.8)	25.3 (95.8)	25.3 (95.8)	25.3 (95.8)

*Includes air conditioner

GVWR (GROSS VEHICLE WEIGHT RATING)

The maximum permissible weight of this motorhome. The GVWR is equal to or greater than the sum of the unloaded vehicle weight (UVW) plus the net carrying capacity (NCC).

UVW (UNLOADED VEHICLE WEIGHT)

The weight of the motorhome as built at the factory with full fuel, engine oil, and coolants. The UVW does not include cargo, fresh water, LP gas, occupants, factory or dealer installed accessories.

NCC (NET CARRYING CAPACITY)

The maximum weight of all occupants, including the driver, personal belongings, food, fresh water, LP gas, tools, tongue weight of towed vehicle, factory and dealer installed accessories, etc., that can be carried by this motorhome. (NCC is equal to or less than GVWR minus UVW.)

Please see your dealer for weights of factory installed options.



Standards and Options

VEHICULAR

	A29	A30G	A34F	A36FB
Air Conditioner – Chassis	S	S	S	S
Airbag Assist Rear Suspension	S	S	S	S
Batteries – Auxiliary Coach Batteries (2 x 12 Volt)	S	S	S	S
BIRD – Bidirectional Isolator Relay Delay Battery Charging	S	S	S	S
Block Heater	S	S	S	S
Bumper – Steel Reinforced Rear Bumper	S	S	S	S
Chassis – Ford 3 Valve 6.8L Triton V10, 18,000 lb. GVW, 190" Wheelbase	S	S	-	-
Chassis – Ford 3 Valve 6.8L Triton V10, 20,500 lb. GVW, 228" Wheelbase	-	-	S	-
Chassis – Ford 3 Valve 6.8L Triton V10, 22,000 lb. GVW, 228" Wheelbase	-	-	-	S
Cruise Control and Tilt Steering Wheel	S	S	S	S
Hitch – Trailer Hitch Receiver with Wiring and Plug, Class III	S	S	S	S
Jacks – HWH Hydraulic Levelling Jacks with Joystick Control	0	S	S	S
Light – High Mounted Stoplight, LED Long Life	S	S	S	S
Mirrors – Heated Remote Mirrors	S	S	S	S
Slide-Out – Electric Slide-Out System in Bedroom	-	-	-	S
Slide-Out – HWH Hydraulic Slide-Out System in Living Area	-	S	S	S
Spare Tire and Wheel	S	S	S	S
Switch – Battery Boost Switch	S	S	S	S
Tires – Radial Ply	S	S	S	S
Transmission – Five-Speed Automatic with Overdrive	S	S	S	S
Transmission Cooler	S	S	S	S
Undercoating – Automotive Type	S	S	S	S
Wheel Simulators	S	S	S	S
Wipers – Wet Arm Windshield Wipers with Intermittent	S	S	S	S

CONSTRUCTION

Baggage Doors – Aluminium Baggage Doors with Gas Struts and Slam Latch	S	S	S	S
Floor – Vacuum Bonded Insulated Steel Framed Insulated Floor Construction	S	S	S	S
Galvanized Luggage Compartments with Cargo Lining	S	S	S	S
Gelcoat Fibreglass Front and Rear Masks	S	S	S	S
Roof – Domed EPDM Roof with Rain Gutters and Down Spouts	S	S	S	S
Steel Cab Floor, Firewall and Dash Structure	S	S	S	S
Vacuum Bonded Aluminium Framed Insulated Roof and Wall Construction	S	S	S	S
Vacuum Bonded Medallion FRP Sidewalls	S	S	S	S
Windows – Tinted Radius Corner Windows	S	S	S	S

EXTERIOR

Door – Screened Entry Door with Integral Deadbolt Lock	S	S	S	S
Exterior Assist Handle – Monogrammed	S	S	S	S
Ladder – Exterior Ladder	S	S	S	S
Light – Porch Light with Yellow Lens	S	S	S	S
Painted Skirts	S	S	S	S
Receptacle – Patio G.F.I Receptacle	S	S	S	S
Step – Electric Entry Step	S	S	S	S

INTERIOR

Bedspring – Decorative Bed Spread and Throw Pillows	S	S	S	S
Blind – Venetian Blind in Galley	S	S	S	S
Borders – Wall Borders in Galley and Bedroom Areas	S	S	S	S
Ceiling – Domed with Padded Vinyl Headliner	S	S	S	S
Detectors – Electronic Smoke, LP and CO Detectors	S	S	S	S
Doors – Raised Solid Oak Cabinet Doors	S	S	S	S
Drawers – Full Extension Ball Bearing Drawer Tracks	S	S	S	S
Fire Extinguisher – Dry Chemical	S	S	S	S

Specifications

EMBASSY GAS 2006	A29	A30G	A34F	A36FB
GVWR – lbs. (kg)	18,000 (8 164)	18,000 (8 164)	20,500 (9 298)	22,000 (10 000)
UVW – lbs. (kg)	12,838 (5 823)	13,889 (6 300)	15,166 (6 879)	16,787 (7 617)
NCC – lbs. (kg)	5,162 (2 341)	4,111 (1 864)	5,334 (2 419)	5,213 (2 383)
Wheelbase – in. (mm)	190 (4 826)	190 (4 826)	228 (5 791)	228 (5 791)
Length – ft. (mm)	29' 3" (8 915)	30' 8" (9 345)	34' 2" (10 425)	35' 9" (10 910)
Width – ft. (mm)	8' 4" (2 534)	8' 4" (2 534)	8' 4" (2 534)	8' 4" (2 534)
Height* – ft. (mm)	11' 6" (3 505)	11' 6" (3 505)	11' 6" (3 505)	11' 6" (3 505)
Water Tank Capacity – U.S. gal. (L)	76 (285)	55 (206)	76 (285)	76 (285)
Holding Tank Capacity – U.S. gal. (L)	78 (295)	78 (295)	78 (295)	78 (295)
Fuel Capacity – U.S. gal. (L)	75 (284)	75 (284)	75 (284)	75 (284)
Propane Capacity – U.S. gal. (L)	25.3 (95.8)	25.3 (95.8)	25.3 (95.8)	25.3 (95.8)

*Includes air conditioner

GVWR (GROSS VEHICLE WEIGHT RATING)

The maximum permissible weight of this motorhome. The GVWR is equal to or greater than the sum of the unloaded vehicle weight (UVW) plus the net carrying capacity (NCC).

UVW (UNLOADED VEHICLE WEIGHT)

The weight of the motorhome as built at the factory with full fuel, engine oil, and coolants. The UVW does not include cargo, fresh water, LP gas, occupants, factory or dealer installed accessories.

NCC (NET CARRYING CAPACITY)

The maximum weight of all occupants, including the driver, personal belongings, food, fresh water, LP gas, tools, tongue weight of towed vehicle, factory and dealer installed accessories, etc., that can be carried by this motorhome. (NCC is equal to or less than GVWR minus UVW.)

Please see your dealer for weights of factory installed options.



Standards and Options

VEHICULAR	A29	A30G	A34F	A36FB
Air Conditioner – Chassis	S	S	S	S
Airbag Assist Rear Suspension	S	S	S	S
Batteries – Auxiliary Coach Batteries (2 x 12 Volt)	S	S	S	S
BIRD – Bidirectional Isolator Relay Delay Battery Charging	S	S	S	S
Block Heater	S	S	S	S
Bumper – Steel Reinforced Rear Bumper	S	S	S	S
Chassis – Ford 3 Valve 6.8L Triton V10, 18,000 lb. GVW, 190" Wheelbase	S	S	-	-
Chassis – Ford 3 Valve 6.8L Triton V10, 20,500 lb. GVW, 228" Wheelbase	-	-	S	-
Chassis – Ford 3 Valve 6.8L Triton V10, 22,000 lb. GVW, 228" Wheelbase	-	-	-	S
Cruise Control and Tilt Steering Wheel	S	S	S	S
Hitch – Trailer Hitch Receiver with Wiring and Plug, Class III	S	S	S	S
Jacks – HWH Hydraulic Levelling Jacks with Joystick Control	0	S	S	S
Light – High Mounted Stoplight, LED Long Life	S	S	S	S
Mirrors – Heated Remote Mirrors	S	S	S	S
Slide-Out – Electric Slide-Out System in Bedroom	-	-	-	S
Slide-Out – HWH Hydraulic Slide-Out System in Living Area	-	S	S	S
Spare Tire and Wheel	S	S	S	S
Switch – Battery Boost Switch	S	S	S	S
Tires – Radial Ply	S	S	S	S
Transmission – Five-Speed Automatic with Overdrive	S	S	S	S
Transmission Cooler	S	S	S	S
Undercoating – Automotive Type	S	S	S	S
Wheel Simulators	S	S	S	S
Wipers – Wet Arm Windshield Wipers with Intermittent	S	S	S	S
CONSTRUCTION				
Baggage Doors – Aluminium Baggage Doors with Gas Struts and Slam Latch	S	S	S	S
Floor – Vacuum Bonded Insulated Steel Framed Insulated Floor Construction	S	S	S	S
Galvanized Luggage Compartments with Cargo Lining	S	S	S	S
Gelcoat Fibreglass Front and Rear Masks	S	S	S	S
Roof – Domed EPDM Roof with Rain Gutters and Down Spouts	S	S	S	S
Steel Cab Floor, Firewall and Dash Structure	S	S	S	S
Vacuum Bonded Aluminium Framed Insulated Roof and Wall Construction	S	S	S	S
Vacuum Bonded Medallion FRP Sidewalls	S	S	S	S
Windows – Tinted Radius Corner Windows	S	S	S	S
EXTERIOR				
Door – Screened Entry Door with Integral Deadbolt Lock	S	S	S	S
Exterior Assist Handle – Monogrammed	S	S	S	S
Ladder – Exterior Ladder	S	S	S	S
Light – Porch Light with Yellow Lens	S	S	S	S
Painted Skirts	S	S	S	S
Receptacle – Patio G.F.I Receptacle	S	S	S	S
Step – Electric Entry Step	S	S	S	S
INTERIOR				
Bedspring – Decorative Bed Spread and Throw Pillows	S	S	S	S
Blind – Venetian Blind in Galley	S	S	S	S
Borders – Wall Borders in Galley and Bedroom Areas	S	S	S	S
Ceiling – Domed with Padded Vinyl Headliner	S	S	S	S
Detectors – Electronic Smoke, LP and CO Detectors	S	S	S	S
Doors – Raised Solid Oak Cabinet Doors	S	S	S	S
Drawers – Full Extension Ball Bearing Drawer Tracks	S	S	S	S
Fire Extinguisher – Dry Chemical	S	S	S	S



INTERIOR (CONTINUED)

	A29	A30G	A34F	A36FB
Flooring – Carpet in Living Area as per Floor Plan	0	0	0	0
Flooring – Linoleum in Living Area, Galley and Lavatory and Carpet in Bedroom Areas	S	S	S	S
Flooring – Wood Look Laminate Flooring in Galley with Carpet in Living Area	0	0	0	0
Headboard – Fabric Wrapped Deluxe Headboard	S	S	S	S
Shades – Day/Night Pleated in Bedroom and Living Area	S	S	S	S

FURNITURE

Bed – Twin Beds (36" x 74")	0	0	0	-
Booth Dinette – Steel Framing for Seat Belts	S	S	-	-
Booth Dinette with Under Seat Storage, Laminate with Solid Oak Edge	-	-	S	S
Chair – Optima Leather Look Captains Chair(s) on Passenger Side (2 in A29, 1 in A36FB, A34F)	S	-	S	S
Flip Table – Oak	S	-	S	S
Hide-A-Bed – Cloth	-	-	S	S
Make-Up Table in Bedroom	-	-	-	S
Mattress – Air Coil Mattress Upgrade on Hide-A-Bed (with 110 Volt Air Pump)	-	-	0	0
Mattress – Innerspring 60" x 74"	S	S	S	-
Mattress – Innerspring 60" x 80"	-	-	-	S
Seats – Optima Leather Look Reclining Driver's and Passenger's Swivel Bucket Seats	S	S	S	S
Sofa – Jackknife Sofa	-	S	-	-
Sofa – Jackknife Sofa in Lieu of Cocktail Chairs	0	-	-	-
Stool – Stool for Make-Up Table	-	-	-	0

GALLEY

Bi-fold Range Cover	S	S	S	S
Convection Microwave – OTR with Light and 110 Volt Vent Fan with Cooktop and Drawers ILO Oven	-	0	-	-
Cooktop – 3 Burner Stove Top with High Output Burner with Oven	S	S	S	S
Countertop – Laminate Counter with Solid Oak Edge with Acrylic Sink and Cutting Board Sink Cover	S	S	S	S
Microwave – Over the Range with Light and Vent Fan	-	S	-	-
Microwave Oven	S	-	S	S
Range Hood with Monitor Panel and light	S	-	S	S
Refrigerator – Dometic LP/Electric 8 cu. ft. with Temp Control, Shelf Guards	S	S	S	S

LAVATORY

Fan – Power Bath Vent	S	S	S	S
Flooring – Vinyl Floor Covering	S	S	S	S
Shower – Neo Angle Shower with Glass Doors	-	S	S	S
Sink – Acrylic Sink in Laminate Counter with Laminate Edge	S	S	S	S
Skylight in Shower	S	S	S	S
Toilet – Sealand Traveller Lite, China, Foot Flush	S	S	S	S
Tub – Folding Tub Door	S	-	-	-
Window – Window in Toilet Room	-	-	S	S

ENTERTAINMENT

CD Changer – 10 Stack CD Changer (N/A with AM/FM/Cassette/CD)	0	0	0	0
Radio Monoplex System – Switching for Rear Bedroom Speakers	S	S	S	S
Satellite Dish – Winegard with Electronic Elevation Sensor	0	0	0	0
Stereo – AM/FM Weather Band Receiver with Cassette/CD Player with Big Button	0	0	0	0
Stereo – AM/FM Weather Band Receiver with CD Player in Dash with Big Button	S	S	S	S
Telephone and Cable TV Hook-Up, Exterior	S	S	S	S
TV – AC 20" Colour Stereo with Remote in Bedroom	-	-	-	S
TV – AC 20" Colour Stereo in Front Overhead Cabinet	S	S	S	S
TV – DC 13" Colour with Remote in Cabinet in Bedroom	0	0	0	-
TV Antenna – Roof Top Retractable with Booster	S	S	S	S

HEATING VENTILATING AND AIR CONDITIONING

Air Conditioner – 13,500 BTU with Heat Strip	S	S	S	S
Air Conditioning – Dual Ducted 2 x 13,500 Roof Air with Selector Switch	-	-	0	0
Ducting – Ducted for Roof Air Conditioner	S	S	S	S
Furnace – Forced Air Furnace, 35,000 BTU	S	S	S	S

ELECTRICAL

Converter – 12/120 Volt/55 Amp with Charger and Auto Changeover Switch	S	S	S	S
Cord – Power Cord 30 Amp.	S	S	S	S
Generator – 4.0 KW Onan MicroQuiet	S	S	S	S
Plug – 12 Volt Power Plug in Dash	S	S	S	S
Switch – Electronic Battery Disconnect (Coach Batteries)	S	S	S	S

PLUMBING AND LP SYSTEMS

Exterior Shower with Shut-Off Valves for Winterizing	S	S	S	S
LP Tank – Under Floor Mounted	S	S	S	S
Valve – Water Heater By-Pass Valve	S	S	S	S
Water Filter – Faucet in Galley	0	0	0	0
Water Heater – 6 USG Electronic Ignition LP/Electric/Motoraid	S	S	S	S

SYSTEMS

Rear View Camera/Monitor, Black and White	S	S	S	S
---	---	---	---	---

OPTIONAL AWNING PACKAGES

Awning – A&E 8500 Patio Awning, Vinyl (length shown)	15	16	18	18
Awning – Weathershield Equipped A&E Elite 9000 Patio-Acrylic (length shown)	15	16	18	18
Awning – Weathershield Equipped A&E Elite Slide Topper (number of awnings shown)	-	1	1	2
Awning – Deluxe, A&E Elite Slide Topper (number of awnings shown)	-	1	1	2

PACKAGES

XL Package Includes: Enclosed Insulated and Heated Holding Tanks, Light Package in Baggage Compartment, Rear Auxiliary Heater, Thermal Pane Windows	S	S	S	S
Customer Value Package Includes: Air Conditioner – 15,000 BTU with Heat Strip, Front Airbag Assist Suspension, CB Antenna (Coax Lead Under Dash), DVD/VCR Combination Unit, Thermostatically Controlled Ceiling Fan (Bedroom), Chrome Cockpit Ventilating Fan with Dash Switch, Coordinated Pillows for Living Area, Satellite Dish Pre-Wire (12/110 Volt Power) with Switch Box, Oak Finished Raised Fridge Inserts, Rust Protection	0	0	0	0
Factory P.D.I.	0	0	0	0

New for 06 S Standard 0 Optional

Embassy Gas



	A29	A30G	A34F	A36FB
INTERIOR (CONTINUED)				
Flooring – Carpet in Living Area as per Floor Plan	0	0	0	0
Flooring – Linoleum in Living Area, Galley and Lavatory and Carpet in Bedroom Areas	S	S	S	S
Flooring – Wood Look Laminate Flooring in Galley with Carpet in Living Area	0	0	0	0
Headboard – Fabric Wrapped Deluxe Headboard	S	S	S	S
☛ Shades – Day/Night Pleated in Bedroom and Living Area	S	S	S	S
FURNITURE				
Bed – Twin Beds (36" x 74")	0	0	0	-
Booth Dinette – Steel Framing for Seat Belts	S	S	-	-
Booth Dinette with Under Seat Storage, Laminate with Solid Oak Edge	-	-	S	S
☛ Chair – Optima Leather Look Captains Chair(s) on Passenger Side (2 in A29, 1 in A36FB, A34F)	S	-	S	S
Flip Table – Oak	S	-	S	S
☛ Hide-A-Bed – Cloth	-	-	S	S
Make-Up Table in Bedroom	-	-	-	S
Mattress – Air Coil Mattress Upgrade on Hide-A-Bed (with 110 Volt Air Pump)	-	-	0	0
Mattress – Innerspring 60" x 74"	S	S	S	-
Mattress – Innerspring 60" x 80"	-	-	-	S
Seats – Optima Leather Look Reclining Driver's and Passenger's Swivel Bucket Seats	S	S	S	S
Sofa – Jackknife Sofa	-	S	-	-
Sofa – Jackknife Sofa in Lieu of Cocktail Chairs	0	-	-	-
Stool – Stool for Make-Up Table	-	-	-	0
GALLEY				
Bi-fold Range Cover	S	S	S	S
Convection Microwave – OTR with Light and 110 Volt Vent Fan with Cooktop and Drawers ILO Oven	-	0	-	-
Cooktop – 3 Burner Stove Top with High Output Burner with Oven	S	S	S	S
Countertop – Laminate Counter with Solid Oak Edge with Acrylic Sink and Cutting Board Sink Cover	S	S	S	S
Microwave – Over the Range with Light and Vent Fan	-	S	-	-
Microwave Oven	S	-	S	S
Range Hood with Monitor Panel and light	S	-	S	S
Refrigerator – Dometic LP/Electric 8 cu. ft. with Temp Control, Shelf Guards	S	S	S	S
LAVATORY				
Fan – Power Bath Vent	S	S	S	S
Flooring – Vinyl Floor Covering	S	S	S	S
Shower – Neo Angle Shower with Glass Doors		S	S	S
Sink – Acrylic Sink in Laminate Counter with Laminate Edge	S	S	S	S
Skylight in Shower	S	S	S	S
☛ Toilet – Sealand Traveller Lite, China, Foot Flush	S	S	S	S
Tub – Folding Tub Door	S	-	-	-
☛ Window – Window in Toilet Room	-	-	S	S
ENTERTAINMENT				
CD Changer – 10 Stack CD Changer (N/A with AM/FM/Cassette/CD)	0	0	0	0
Radio Monoplex System – Switching for Rear Bedroom Speakers	S	S	S	S
Satellite Dish – Winegard with Electronic Elevation Sensor	0	0	0	0
Stereo – AM/FM Weather Band Receiver with Cassette/CD Player with Big Button	0	0	0	0
Stereo – AM/FM Weather Band Receiver with CD Player in Dash with Big Button	S	S	S	S
Telephone and Cable TV Hook-Up, Exterior	S	S	S	S
TV – AC 20" Colour Stereo with Remote in Bedroom	-	-	-	S
☛ TV – AC 20" Colour Stereo in Front Overhead Cabinet	S	S	S	S
TV – DC 13" Colour with Remote in Cabinet in Bedroom	0	0	0	-
TV Antenna – Roof Top Retractable with Booster	S	S	S	S

	A29	A30G	A34F	A36FB
HEATING VENTILATING AND AIR CONDITIONING				
Air Conditioner – 13,500 BTU with Heat Strip	S	S	S	S
Air Conditioning – Dual Ducted 2 x 13,500 Roof Air with Selector Switch	-	-	0	0
Ducting – Ducted for Roof Air Conditioner	S	S	S	S
Furnace – Forced Air Furnace, 35,000 BTU	S	S	S	S
ELECTRICAL				
Converter – 12/120 Volt/55 Amp with Charger and Auto Changeover Switch	S	S	S	S
Cord – Power Cord 30 Amp.	S	S	S	S
Generator – 4.0 KW Onan MicroQuiet	S	S	S	S
Plug – 12 Volt Power Plug in Dash	S	S	S	S
Switch – Electronic Battery Disconnect (Coach Batteries)	S	S	S	S
PLUMBING AND LP SYSTEMS				
Exterior Shower with Shut-Off Valves for Winterizing	S	S	S	S
LP Tank – Under Floor Mounted	S	S	S	S
Valve – Water Heater By-Pass Valve	S	S	S	S
☛ Water Filter – Faucet in Galley	0	0	0	0
Water Heater – 6 USG Electronic Ignition LP/Electric/Motoraid	S	S	S	S
SYSTEMS				
Rear View Camera/Monitor, Black and White	S	S	S	S
OPTIONAL AWNING PACKAGES				
Awning – A&E 8500 Patio Awning, Vinyl (length shown)	15	16	18	18
Awning – Weathershield Equipped A&E Elite 9000 Patio-Acrylic (length shown)	15	16	18	18
Awning – Weathershield Equipped A&E Elite Slide Topper (number of awnings shown)	-	1	1	2
Awning – Deluxe, A&E Elite Slide Topper (number of awnings shown)	-	1	1	2
PACKAGES				
☛ XL Package Includes: Enclosed Insulated and Heated Holding Tanks, Light Package in Baggage Compartment, Rear Auxiliary Heater, Thermal Pane Windows	S	S	S	S
☛ Customer Value Package Includes: Air Conditioner – 15,000 BTU with Heat Strip, Front Airbag Assist Suspension, CB Antenna (Coax Lead Under Dash), DVD/VCR Combination Unit, Thermostatically Controlled Ceiling Fan (Bedroom), Chrome Cockpit Ventilating Fan with Dash Switch, Coordinated Pillows for Living Area, Satellite Dish Pre-Wire (12/110 Volt Power) with Switch Box, Oak Finished Raised Fridge Inserts, Rust Protection	0	0	0	0
Factory P.D.I.	0	0	0	0
☛ New for 06 S Standard 0 Optional				

Embassy Gas

Ready to go the distance.

Built around a Freightliner XC chassis with a powerful 300 horsepower Cummins engine, Embassy Diesel delivers the tough, dependable performance you seek for extended life on the road. It also represents one of the best values available in a diesel RV today with its extensive list of impressive features which include an electric entry step, a rear-view camera with monitor and a 6.5 KW Onan liquid LP Gas generator. You can also customize Embassy according to your needs and comfort preference by selecting from a number of optional features including a satellite dish, an exterior shower, a refreshment centre, full body paint with three colours to choose from and a convenient washer and dryer combo. If you see the road as much a lifestyle as a destination, Embassy Diesel is your vehicle.



A372FB Shown with Structure Decor

Ready to go the distance.

Built around a Freightliner XC chassis with a powerful 300 horsepower Cummins engine, Embassy Diesel delivers the tough, dependable performance you seek for extended life on the road. It also represents one of the best values available in a diesel RV today with its extensive list of impressive features which include an electric entry step, a rear-view camera with monitor and a 6.5 KW Onan liquid LP Gas generator. You can also customize Embassy according to your needs and comfort preference by selecting from a number of optional features including a satellite dish, an exterior shower, a refreshment centre, full body paint with three colours to choose from and a convenient washer and dryer combo. If you see the road as much a lifestyle as a destination, Embassy Diesel is your vehicle.



A372FB Shown with Structure Decor



The skylight will brighten up the spacious neo angle shower featured in all Embassys.



Select Embassy's optional attractive free standing solid oak table with matching chairs as an alternative to the standard functional booth dinette.



Embassy Diesel's large cockpit with its Optima leather look captain chairs easily converts into expanded living area. The 20" flat screen TV in the overhead console is easily viewed from any vantage point.

The large master bedroom is attractively and thoughtfully appointed with a large wardrobe, make-up table with optional stool and decorative bedspread with matching throw pillows.



The well-designed roomy kitchen has such helpful features as a solid surface countertop, a double basin stainless steel sink and a fully extending drawer on an easy sliding ball bearing track.

New for 06

- Heated remote power mirrors
- Domed Kemlite FRP flexroof
- Optional full body paint
- Vacuum bonded gelcoat fiberglass sidewalls
- "Western Oak" — lighter oak stain

Embassy Diesel



The skylight will brighten up the spacious neo angle shower featured in all Embassys.



Select Embassy's optional attractive free standing solid oak table with matching chairs as an alternative to the standard functional booth dinette.



Embassy Diesel's large cockpit with its Optima leather look captain chairs easily converts into expanded living area. The 20" flat screen TV in the overhead console is easily viewed from any vantage point.

The large master bedroom is attractively and thoughtfully appointed with a large wardrobe, make-up table with optional stool and decorative bedspread with matching throw pillows.



The well-designed roomy kitchen has such helpful features as a solid surface countertop, a double basin stainless steel sink and a fully extending drawer on an easy sliding ball bearing track.

New for 06

- Heated remote power mirrors
- Domed Kemlite FRP flexroof
- Optional full body paint
- Vacuum bonded gelcoat fibreglass sidewalls
- "Western Oak" — lighter oak stain

Embassy Diesel

Specifications

EMBASSY DIESEL 2006

	A371FB	A372FB
GVWR – lbs. (kg)	26,850 (12 179)	26,850 (12 179)
UVW – lbs. (kg)	19,575 (8,879)	20,375 (9 242)
NCC – lbs. (kg)	7,275 (3 300)	6,475 (2 937)
Wheelbase – in. (mm)	228" (5 791)	228" (5 791)
Length – ft. (mm)	36' 9" (11 201)	36' 9" (11 201)
Width – ft. (mm)	8' 4" (2 534)	8' 4" (2 534)
Height* – ft. (mm)	11' 10" (3 607)	11' 10" (3 607)
Water Tank Capacity** – U.S. gal. (L)	88 (333)	88 (333)
Water Heater – U.S. gal. (L)	10 (38)	10 (38)
Black Holding Tank Capacity – U.S. gal. (L)	42 (158.8)	42 (158.8)
Grey Holding Tank Capacity – U.S. gal. (L)	39 (147.4)	39 (147.4)
Fuel Capacity – gal. (L)	90 (341)	90 (341)
Propane Capacity – gal. (L)	25.3 (95.8)	25.3 (95.8)

*Includes air conditioner **Includes 10 gal. water heater

GVWR (GROSS VEHICLE WEIGHT RATING)

The maximum permissible weight of this motorhome. The GVWR is equal to or greater than the sum of the unloaded vehicle weight (UVW) plus the net carrying capacity (NCC).

UVW (UNLOADED VEHICLE WEIGHT)

The weight of the motorhome as built at the factory with full fuel, engine oil, and coolants. The UVW does not include cargo, fresh water, LP gas, occupants, factory or dealer installed accessories.

NCC (NET CARRYING CAPACITY)

The maximum weight of all occupants, including the driver, personal belongings, food, fresh water, LP gas, tools, tongue weight of towed vehicle, factory and dealer installed accessories, etc., that can be carried by this motorhome. (NCC is equal to or less than GVWR minus UVW.)

Please see your dealer for weights of factory installed options.



Standards and Options

VEHICULAR

	A371FB	A372FB
Air Brakes with Automatic Slack Adjusters	S	S
Air Conditioner – Chassis	S	S
Air Horns	O	O
Air Suspension with Tuned Sachs Shocks	S	S
Alternator 160 Amp	S	S
Block Heater (750 W)	S	S
Bumper – Integrated Steel Reinforced Fibreglass Bumpers	S	S
Chassis – Freightliner XC with Cummins 300 HP ISB Turbo Diesel 26850 lb. GVW 228" Wheelbase Straight Rail	S	S
Cruise Control	S	S
Exhaust Brake – Cummins Exhaust Brake Integral with Turbo	S	S
Fuel Fill – Concealed Locking Fuel Fill Access on Both Sides	S	S
Headlights – Halogen Styled	S	S
Hitch – Trailer Hitch Receiver with Wiring and Plug, Class III	S	S
Jacks – HWH Touch Pad Control Levelling System with Manual Air Dump	S	S
Light – High Mount Stoplight, LED Long Life	S	S
Mirrors – Heated Remote Power Mirrors	S	S
Radiator Fan Clutch	S	S
Slide-Out – Electric Slide-Out System in Bedroom	S	S
Slide-Out – HWH Flush Floor Hydraulic Slide-Out System	S	S
Steering Wheel – Tilt/Telescopic	S	S
Switch – Battery Boost Switch (Coach to Chassis Batteries)	S	S
Switch – Battery Selector Switch for Radio	S	S
Tires – Radial, 235/80R22.5 LRG	S	S
Transmission – Allison 2500MH Five-Speed Automatic with Lock-Up, Electronic Shift Pad	S	S
Transmission Cooler	S	S
Undercoating – Automotive Type	S	S
Wheel Simulators	S	S
Wipers – Wet Arm Windshield Wipers with Intermittent Function	S	S

CONSTRUCTION

Baggage Doors – Aluminium Baggage Doors with Gas Struts and Slam Latch	S	S
Gelcoat Fibreglass Molded Front and Rear Mask	S	S
Roof – Domed Kemlite FRP Flexroof	S	S
Steel Cab Floor, Firewall and Dash Structure	S	S
Vacuum Bonded Aluminium Framed Insulated Sidewall and Roof Construction	S	S
Vacuum Bonded Gelcoat Fibreglass Sidewalls	S	S
Vacuum Bonded Steel Framed Insulated Floor Construction	S	S
Windows – Tinted Radius Corner Windows	S	S

EXTERIOR

Diamondshield® Paint Protection Film – Invisible Bra	O	O
Door – Screened Entry with Deadbolt Lock	S	S
Exterior Assist Handle – Monogrammed	S	S
Full Body Paint	O	O
Ladder – Exterior Ladder with Detachable Lower Section	S	S
Light – Porch Light	S	S
Lights – Rear Docking Lights	S	S
Painted Skirts	S	S
Step – Electric Retractable Entry Step	S	S

INTERIOR

Bedspring – Decorative Bedspring and Throw Pillows	S	S
Cabinetry – Oak Finish Cabinet Face Framing	S	S
Ceiling – Domed with Padded Vinyl Headliner	S	S

Specifications

EMBASSY DIESEL 2006

	A371FB	A372FB
GVWR – lbs. (kg)	26,850 (12 179)	26,850 (12 179)
UVW – lbs. (kg)	19,575 (8,879)	20,375 (9 242)
NCC – lbs. (kg)	7,275 (3 300)	6,475 (2 937)
Wheelbase – in. (mm)	228" (5 791)	228" (5 791)
Length – ft. (mm)	36' 9" (11 201)	36' 9" (11 201)
Width – ft. (mm)	8' 4" (2 534)	8' 4" (2 534)
Height* – ft. (mm)	11' 10" (3 607)	11' 10" (3 607)
Water Tank Capacity** – U.S. gal. (L)	88 (333)	88 (333)
Water Heater – U.S. gal. (L)	10 (38)	10 (38)
Black Holding Tank Capacity – U.S. gal. (L)	42 (158.8)	42 (158.8)
Grey Holding Tank Capacity – U.S. gal. (L)	39 (147.4)	39 (147.4)
Fuel Capacity – gal. (L)	90 (341)	90 (341)
Propane Capacity – gal. (L)	25.3 (95.8)	25.3 (95.8)

*Includes air conditioner **Includes 10 gal. water heater

GVWR (GROSS VEHICLE WEIGHT RATING)

The maximum permissible weight of this motorhome. The GVWR is equal to or greater than the sum of the unloaded vehicle weight (UVW) plus the net carrying capacity (NCC).

UVW (UNLOADED VEHICLE WEIGHT)

The weight of the motorhome as built at the factory with full fuel, engine oil, and coolants. The UVW does not include cargo, fresh water, LP gas, occupants, factory or dealer installed accessories.

NCC (NET CARRYING CAPACITY)

The maximum weight of all occupants, including the driver, personal belongings, food, fresh water, LP gas, tools, tongue weight of towed vehicle, factory and dealer installed accessories, etc., that can be carried by this motorhome. (NCC is equal to or less than GVWR minus UVW.)

Please see your dealer for weights of factory installed options.



Standards and Options

VEHICULAR

	A371FB	A372FB
Air Brakes with Automatic Slack Adjusters	S	S
Air Conditioner – Chassis	S	S
Air Horns	O	O
Air Suspension with Tuned Sachs Shocks	S	S
Alternator 160 Amp	S	S
Block Heater (750 W)	S	S
Bumper – Integrated Steel Reinforced Fibreglass Bumpers	S	S
Chassis – Freightliner XC with Cummins 300 HP ISB Turbo Diesel 26850 lb. GVW 228" Wheelbase Straight Rail	S	S
Cruise Control	S	S
Exhaust Brake – Cummins Exhaust Brake Integral with Turbo	S	S
Fuel Fill – Concealed Locking Fuel Fill Access on Both Sides	S	S
Headlights – Halogen Styled	S	S
Hitch – Trailer Hitch Receiver with Wiring and Plug, Class III	S	S
Jacks – HWH Touch Pad Control Levelling System with Manual Air Dump	S	S
Light – High Mount Stoplight, LED Long Life	S	S
Mirrors – Heated Remote Power Mirrors	S	S
Radiator Fan Clutch	S	S
Slide-Out – Electric Slide-Out System in Bedroom	S	S
Slide-Out – HWH Flush Floor Hydraulic Slide-Out System	S	S
Steering Wheel – Tilt/Telescopic	S	S
Switch – Battery Boost Switch (Coach to Chassis Batteries)	S	S
Switch – Battery Selector Switch for Radio	S	S
Tires – Radial, 235/80R22.5 LRG	S	S
Transmission – Allison 2500MH Five-Speed Automatic with Lock-Up, Electronic Shift Pad	S	S
Transmission Cooler	S	S
Undercoating – Automotive Type	S	S
Wheel Simulators	S	S
Wipers – Wet Arm Windshield Wipers with Intermittent Function	S	S

CONSTRUCTION

Baggage Doors – Aluminium Baggage Doors with Gas Struts and Slam Latch	S	S
Gelcoat Fibreglass Molded Front and Rear Mask	S	S
Roof – Domed Kemlite FRP Flexroof	S	S
Steel Cab Floor, Firewall and Dash Structure	S	S
Vacuum Bonded Aluminium Framed Insulated Sidewall and Roof Construction	S	S
Vacuum Bonded Gelcoat Fibreglass Sidewalls	S	S
Vacuum Bonded Steel Framed Insulated Floor Construction	S	S
Windows – Tinted Radius Corner Windows	S	S

EXTERIOR

Diamondshield® Paint Protection Film – Invisible Bra	O	O
Door – Screened Entry with Deadbolt Lock	S	S
Exterior Assist Handle – Monogrammed	S	S
Full Body Paint	O	O
Ladder – Exterior Ladder with Detachable Lower Section	S	S
Light – Porch Light	S	S
Lights – Rear Docking Lights	S	S
Painted Skirts	S	S
Step – Electric Retractable Entry Step	S	S

INTERIOR

Bedspring – Decorative Bedspring and Throw Pillows	S	S
Cabinetry – Oak Finish Cabinet Face Framing	S	S
Ceiling – Domed with Padded Vinyl Headliner	S	S



	A371FB	A372FB
INTERIOR (CONTINUED)		
Cover – Flip-Out Front Step Well Cover	-	S
Detectors – Electronic Smoke, LP and CO	S	S
Doors – Solid Oak Raised Panel Cabinet Doors	S	S
Drawers – Full Extension Ball Bearing Drawer Tracks	S	S
Drawers – Slide-Out Drawer Option in Washer /Dryer Cabinet (N/A with Washer/Dryer Option)	0	0
Fire Extinguisher – Dry Chemical	S	S
Flooring – Wood Look Laminate Flooring in Galley in Lieu of Linoleum	0	0
Latches – Snap Latches on Galley, Lavatory Overhead Cabinets and Large Wardrobe Doors	S	S
Storage – Easy Under Bed Storage and with Gas Struts	S	S
FURNITURE		
Booth Dinette with Under Seat Storage	S	S
Chair – Optima Leather Look Captains Chair on Passenger Side with Oak Flip Table	S	S
Hide-A-Bed – Cloth Hide-A-Bed on Driver's Side	S	S
Love Seat – Cloth in Lieu of Cocktail Chair	-	0
Mattress – Air Coil Mattress Upgrade on Hide a Bed (with 110 Volt Air Pump)	0	0
Mattress – Residential Quality Queen (60" x 80")	S	S
Mattress – Upgrade	0	0
Seats – Optima Leather Look Reclining Driver's and Passenger's Swivel Bucket Seats	S	S
Stool for Make-Up Table in Bedroom	0	0
Table – Solid Oak Free Standing Table and Slat Back Chairs	0	0
GALLEY		
Bi-Fold Solid Surface Range Cover	S	S
Convection Microwave – OTR with Light and 110 Volt Vent Fan with Cooktop and Drawers	0	0
Cooktop – Recessed Cooktop with High Output Burner and Bi-Fold Solid Surface Range Cover	S	S
Countertop – Solid Surface Counter in Galley with Stainless Steel Undermount Sink	S	S
Microwave – OTR with Light and 110 Volt Vent Fan	S	S
Refrigerator – Dometic LP/Electric 8 cu. ft. with Temp Control, Shelf Guards	S	S
Stainless Steel Sink	S	S
LAVATORY		
Cabinet – Oak Finish Medicine Cabinet with Mirror	S	S
Fan – Power Vent Fan in Bathroom	S	S
Neo Angle Shower with Glass Enclosure	S	S
Skylight – Shower Compartment	S	S
Toilet – Sealand Traveller Lite, China, Foot Flush	S	S
ENTERTAINMENT		
CD Changer – 10 Stack CD Changer (N/A with AM/FM/Cassette/CD)	0	0
Satellite Dish – Winegard with Electronic Elevation Sensor	0	0
Stereo – AM/FM Weather Band Receiver with Cassette/CD Player with Big Button	0	0
Stereo – AM/FM Weather Band Receiver with CD Player in Dash with Big Button	S	S
Telephone and Cable TV Hook-Up – Exterior	S	S
TV – AC 20" Flat Screen Colour Stereo with Remote in Bedroom	S	S
TV – AC 20" Flat Screen Colour Stereo TV with Remote in Overhead Cabinet	S	S
TV Antenna – Roof Top Retractable Antenna with Booster	S	S
HEATING VENTILATING AND AIR CONDITIONING		
Air Conditioner – Dual Ducted (2) 13,500 BTU with Heat Strip	0	0
Air Conditioner – Ducted 13,500 BTU with Heat Strip	S	S
Fan – Thermostatically Controlled Fan in Living Area	0	0
Furnace – Two Forced Air Furnaces, 25,000 BTU	S	S

	A371FB	A372FB
ELECTRICAL		
Batteries – Deep Cycle Coach Batteries, 2 x 12 Volt	S	S
Bidirectional Isolator Relay Delay (BIRD) Battery Charging	S	S
Converter – 12/120 Volt with Charger and Automatic Changeover Relay	S	S
Generator – 5.5 KW Onan Quiet Diesel on Slide-Out Tray	0	0
Generator – 6.5 KW Onan Liquid LP Gas Marquis on Slide-Out Tray	S	S
Inverter – 2,000 Watt Inverter with 100 Amp Charger with Freedom Remote	0	0
Inverter – 400 Watt (for Front TV, DVD/VCR Combo)	0	0
Panel – 50 Amp Electrical Service with Energy Management System	S	S
Pre-Wire for Solar Panel	0	0
Switch – Electronic Battery Disconnect (Coach Batteries)	S	S
PLUMBING AND LP SYSTEMS		
Black Tank Flush System	S	S
Exterior Shower	S	S
Holding Tanks – Enclosed Waste Holding Tanks	S	S
LP Tank – Easy Access Propane Tank	S	S
Rough-In for Washer/Dryer	S	S
Systems Monitor Panel	S	S
Valve – Water Heater By-Pass	S	S
Water Filter – Faucet in Galley	0	0
Water Heater – Electronic Ignition LP/Electric/Motoraid Water Heater (10 gal.)	S	S
Water Tank – Enclosed Fresh Water Tank	S	S
Water Tank Fill and Bleach Port	S	S
Winterization System with Pick-Up Kit	S	S
SYSTEMS		
Rear View Camera/Monitor, Black and White	S	S
Washer/Dryer (Vented)	0	0
OPTIONAL AWNING PACKAGES		
Awning – Weathershield Equipped A&E Elite Slide Topper (number of awnings shown)	2	2
Awning – Weathershield Equipped A&E Elite 9000 Patio, Acrylic (length shown)	18	18
Awning – Weathershield Equipped A&E Elite Window Awnings	2	2
Awning – Front Door Awning, A&E Oasis Manual	-	0
Awning – Weathershield Equipped Carefree Acrylic Patio Awning (Black Hardware for Full Paint Option)	18	18
Awning – Weathershield Equipped Carefree Slide Topper, Black Hardware (number of awnings shown)	2	2
Awning – Weathershield Equipped Carefree Window Awnings (Black Hardware for Full Paint Option)	2	2
Awning – Front Door Awning – Carefree Manual, Black Hardware	-	0
PACKAGES		
XL Package Includes: Insulated and Heated Holding and Water Tanks, Light Package in Baggage Compartment, Rear Auxiliary Heater, Thermal Pane Windows	S	S
Customer Value Package Includes: CB Antenna (Coax Lead Under Dash), DVD/VCR Combination Unit, Thermostatically Controlled Fan in Bedroom Chrome Cockpit Ventilating Fan with Dash Switch, Coordinated Pillows for Living Area, Satellite Dish Pre-Wire (12/110 Volt Power), Oak Finished Raised Fridge Inserts, Rust Protection	0	0
Factory P.D.I.	0	0
New for 06 S Standard 0 Optional		

Embassy Diesel



	A371FB	A372FB
INTERIOR (CONTINUED)		
Cover – Flip-Out Front Step Well Cover	-	S
Detectors – Electronic Smoke, LP and CO	S	S
Doors – Solid Oak Raised Panel Cabinet Doors	S	S
☛ Drawers – Full Extension Ball Bearing Drawer Tracks	S	S
Drawers – Slide-Out Drawer Option in Washer /Dryer Cabinet (N/A with Washer/Dryer Option)	0	0
Fire Extinguisher – Dry Chemical	S	S
Flooring – Wood Look Laminate Flooring in Galley in Lieu of Linoleum	0	0
Latches – Snap Latches on Galley, Lavatory Overhead Cabinets and Large Wardrobe Doors	S	S
Storage – Easy Under Bed Storage and with Gas Struts	S	S
FURNITURE		
Booth Dinette with Under Seat Storage	S	S
☛ Chair – Optima Leather Look Captains Chair on Passenger Side with Oak Flip Table	S	S
Hide-A-Bed – Cloth Hide-A-Bed on Driver's Side	S	S
Love Seat – Cloth in Lieu of Cocktail Chair	-	0
Mattress – Air Coil Mattress Upgrade on Hide a Bed (with 110 Volt Air Pump)	0	0
Mattress – Residential Quality Queen (60" x 80")	S	S
Mattress – Upgrade	0	0
Seats – Optima Leather Look Reclining Driver's and Passenger's Swivel Bucket Seats	S	S
Stool for Make-Up Table in Bedroom	0	0
Table – Solid Oak Free Standing Table and Slat Back Chairs	0	0
GALLEY		
☛ Bi-Fold Solid Surface Range Cover	S	S
Convection Microwave – OTR with Light and 110 Volt Vent Fan with Cooktop and Drawers	0	0
Cooktop – Recessed Cooktop with High Output Burner and Bi-Fold Solid Surface Range Cover	S	S
Countertop – Solid Surface Counter in Galley with Stainless Steel Undermount Sink	S	S
Microwave – OTR with Light and 110 Volt Vent Fan	S	S
Refrigerator – Dometic LP/Electric 8 cu. ft. with Temp Control, Shelf Guards	S	S
Stainless Steel Sink	S	S
LAVATORY		
Cabinet – Oak Finish Medicine Cabinet with Mirror	S	S
Fan – Power Vent Fan in Bathroom	S	S
Neo Angle Shower with Glass Enclosure	S	S
Skylight – Shower Compartment	S	S
Toilet – Sealand Traveller Lite, China, Foot Flush	S	S
ENTERTAINMENT		
CD Changer – 10 Stack CD Changer (N/A with AM/FM/Cassette/CD)	0	0
Satellite Dish – Winegard with Electronic Elevation Sensor	0	0
Stereo – AM/FM Weather Band Receiver with Cassette/CD Player with Big Button	0	0
Stereo – AM/FM Weather Band Receiver with CD Player in Dash with Big Button	S	S
Telephone and Cable TV Hook-Up – Exterior	S	S
☛ TV – AC 20" Flat Screen Colour Stereo with Remote in Bedroom	S	S
☛ TV – AC 20" Flat Screen Colour Stereo TV with Remote in Overhead Cabinet	S	S
TV Antenna – Roof Top Retractable Antenna with Booster	S	S
HEATING VENTILATING AND AIR CONDITIONING		
Air Conditioner – Dual Ducted (2) 13,500 BTU with Heat Strip	0	0
Air Conditioner – Ducted 13,500 BTU with Heat Strip	S	S
Fan – Thermostatically Controlled Fan in Living Area	0	0
Furnace – Two Forced Air Furnaces, 25,000 BTU	S	S

	A371FB	A372FB
ELECTRICAL		
Batteries – Deep Cycle Coach Batteries, 2 x 12 Volt	S	S
Bidirectional Isolator Relay Delay (BIRD) Battery Charging	S	S
Converter – 12/120 Volt with Charger and Automatic Changeover Relay	S	S
Generator – 5.5 KW Onan Quiet Diesel on Slide-Out Tray	0	0
Generator – 6.5 KW Onan Liquid LP Gas Marquis on Slide-Out Tray	S	S
Inverter – 2,000 Watt Inverter with 100 Amp Charger with Freedom Remote	0	0
☛ Inverter – 400 Watt (for Front TV, DVD/VCR Combo)	0	0
Panel – 50 Amp Electrical Service with Energy Management System	S	S
Pre-Wire for Solar Panel	0	0
Switch – Electronic Battery Disconnect (Coach Batteries)	S	S
PLUMBING AND LP SYSTEMS		
Black Tank Flush System	S	S
Exterior Shower	S	S
Holding Tanks – Enclosed Waste Holding Tanks	S	S
LP Tank – Easy Access Propane Tank	S	S
Rough-In for Washer/Dryer	S	S
Systems Monitor Panel	S	S
Valve – Water Heater By-Pass	S	S
☛ Water Filter – Faucet in Galley	0	0
Water Heater – Electronic Ignition LP/Electric/Motoraid Water Heater (10 gal.)	S	S
Water Tank – Enclosed Fresh Water Tank	S	S
Water Tank Fill and Bleach Port	S	S
Winterization System with Pick-Up Kit	S	S
SYSTEMS		
Rear View Camera/Monitor, Black and White	S	S
Washer/Dryer (Vented)	0	0
OPTIONAL AWNING PACKAGES		
Awning – Weathershield Equipped A&E Elite Slide Topper (number of awnings shown)	2	2
Awning – Weathershield Equipped A&E Elite 9000 Patio, Acrylic (length shown)	18	18
Awning – Weathershield Equipped A&E Elite Window Awnings	2	2
Awning – Front Door Awning, A&E Oasis Manual	-	0
Awning – Weathershield Equipped Carefree Acrylic Patio Awning (Black Hardware for Full Paint Option)	18	18
Awning – Weathershield Equipped Carefree Slide Topper, Black Hardware (number of awnings shown)	2	2
Awning – Weathershield Equipped Carefree Window Awnings (Black Hardware for Full Paint Option)	2	2
Awning – Front Door Awning – Carefree Manual, Black Hardware	-	0
PACKAGES		
☛ XL Package Includes: Insulated and Heated Holding and Water Tanks, Light Package in Baggage Compartment, Rear Auxiliary Heater, Thermal Pane Windows	S	S
☛ Customer Value Package Includes: CB Antenna (Coax Lead Under Dash), DVD/VCR Combination Unit, Thermostatically Controlled Fan in Bedroom Chrome Cockpit Ventilating Fan with Dash Switch, Coordinated Pillows for Living Area, Satellite Dish Pre-Wire (12/110 Volt Power), Oak Finished Raised Fridge Inserts, Rust Protection	0	0
Factory P.D.I.	0	0
☛ New for 06 S Standard 0 Optional		

Embassy Diesel

Colour Options

Both Embassy Gas and Embassy Diesel can be personalized to your own tastes with your choice of four interior décor combinations and one of six available floor plans. Each design motif has been selected by professional interior designers to skilfully coordinate all visual elements for an overall effect that is both warm and inviting.



OAK CABINETS

The Embassy Gas is equipped with Medallion smooth exterior sidewalls. Extremely dent and weather resistant, these panels will keep your motorhome looking its best for years to come.



The Embassy Diesel is further vacuum bonded with the Goldshield Gelcoat, while extremely dent and weather resistant, these panels feature a more automotive finish to enhance the optional full body paint.

Visit www.tripleerv.com for more information on available options.

	STANDARD	AZTEC	INDIGO	SANTA FE
EXTERIOR				
OPTIONAL FULL BODY PAINT (EMBASSY DIESEL ONLY)				

	GREAT PLAINS	WRANGLER	STRUCTURE	NIAGARA FALLS
SOFA				
BEDSPREAD				
ACCENT				
CARPET				
CAPTAIN CHAIRS				

Colour Options

Both Embassy Gas and Embassy Diesel can be personalized to your own tastes with your choice of four interior décor combinations and one of six available floor plans. Each design motif has been selected by professional interior designers to skilfully coordinate all visual elements for an overall effect that is both warm and inviting.



OAK CABINETRY

The Embassy Gas is equipped with Medallion smooth exterior sidewalls. Extremely dent and weather resistant, these panels will keep your motorhome looking its best for years to come.



The Embassy Diesel is further vacuum bonded with the Goldshield Gelcoat, while extremely dent and weather resistant, these panels feature a more automotive finish to enhance the optional full body paint.

Visit www.tripleerv.com for more information on available options.

	STANDARD	AZTEC	INDIGO	SANTA FE
EXTERIOR				
OPTIONAL FULL BODY PAINT (EMBASSY DIESEL ONLY)				

	GREAT PLAINS	WRANGLER	STRUCTURE	NIAGARA FALLS
SOFA				
BEDSPREAD				
ACCENT				
CARPET				
CAPTAIN CHAIRS				

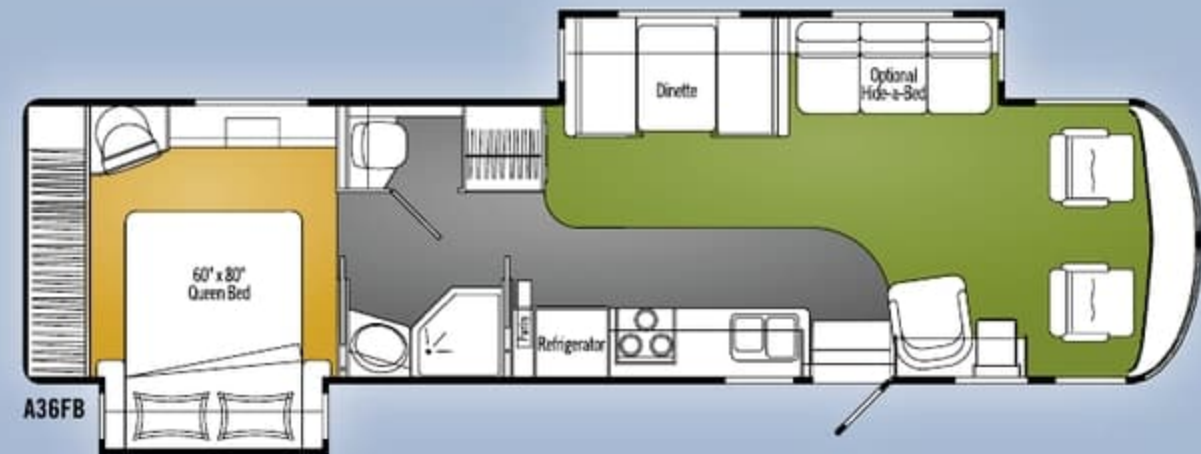
Floor Plans

CARPET

OPTIONAL
CARPET

LINOLEUM

Embassy Gas



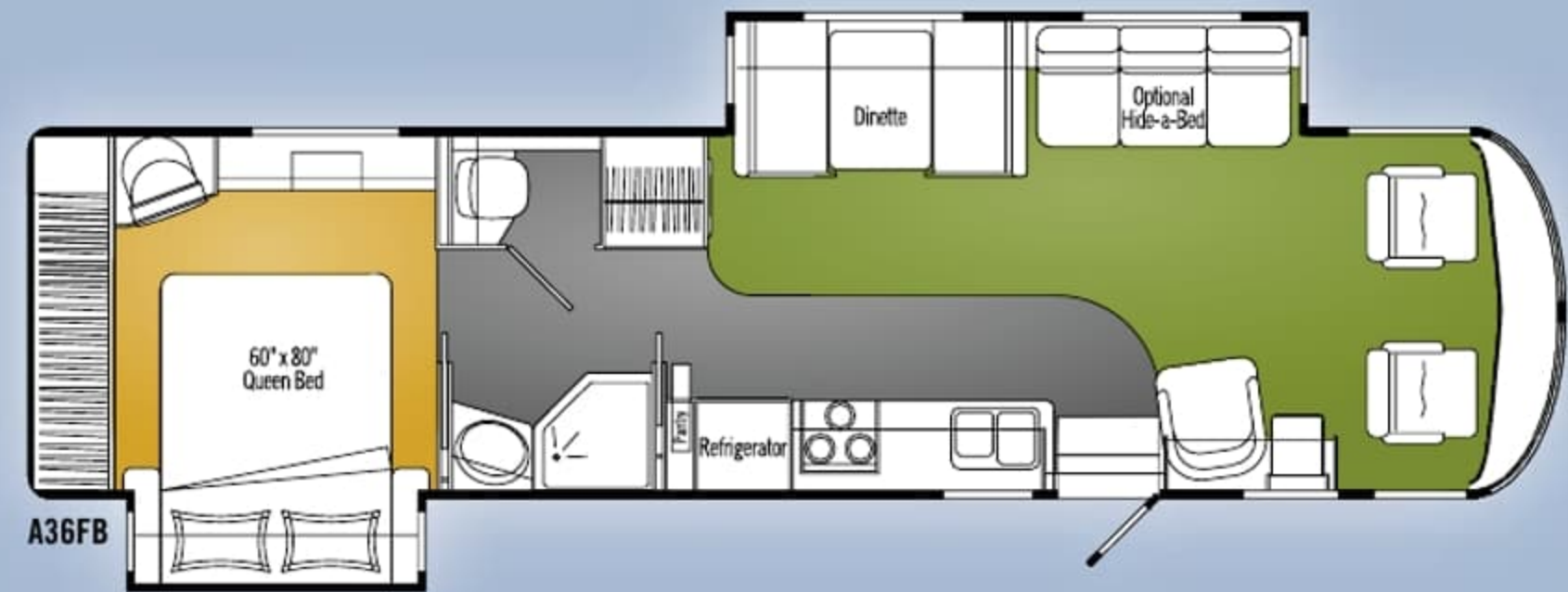
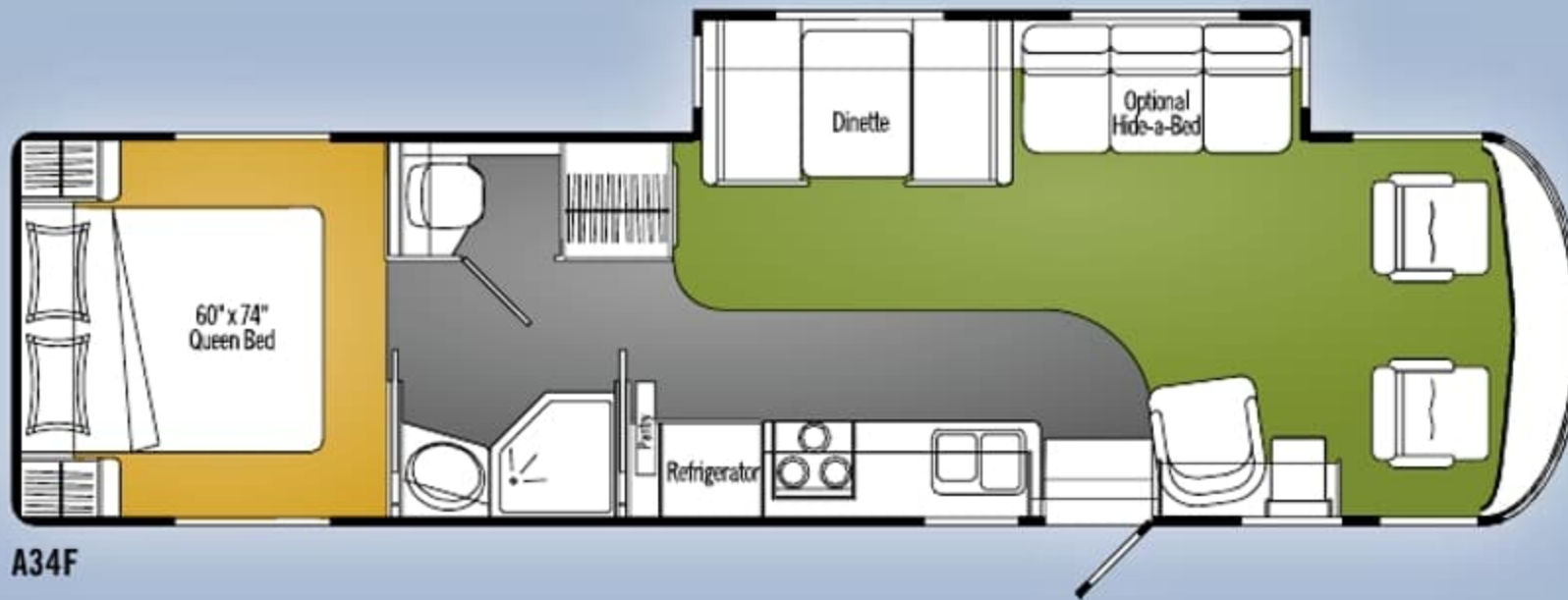
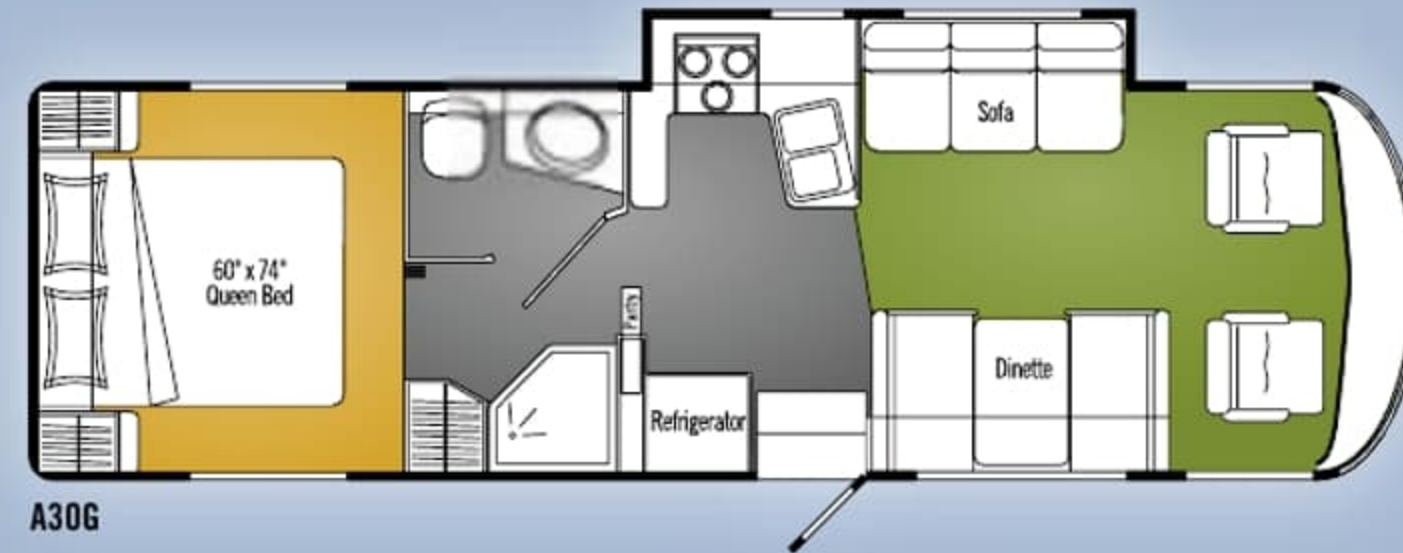
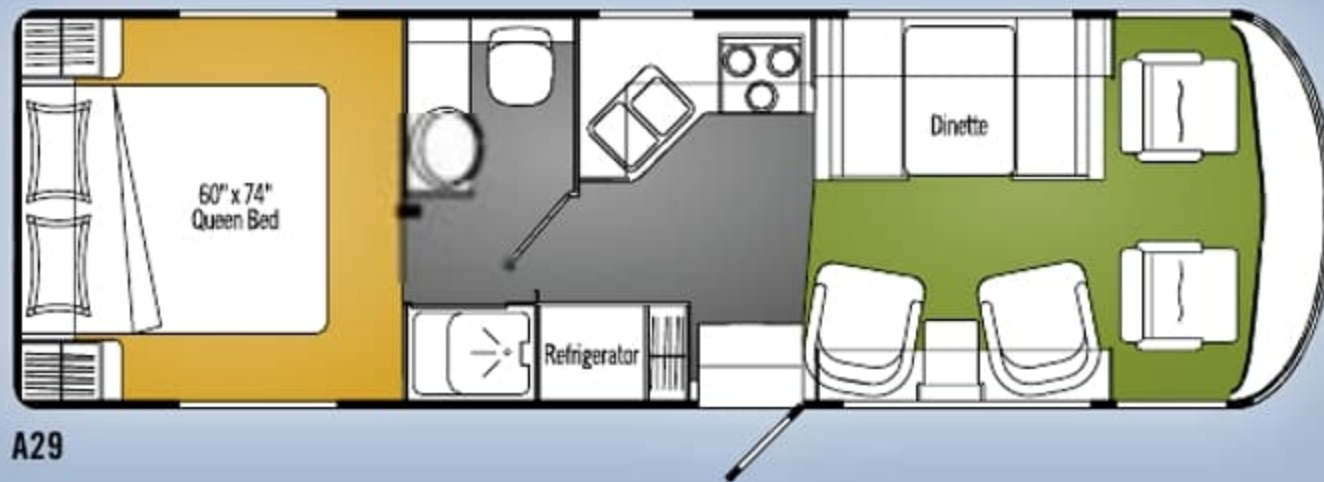
Embassy Diesel



Floor Plans

CARPET OPTIONAL CARPET LINOLEUM

Embassy Gas



Embassy Diesel



Two Year Limited Warranty

Triple E is proud to offer a two year limited warranty on structure as well as most major components. Please see your dealer for further details.

A reputation for excellence since 1965.



Founder P.W. Enns with the first Triple E Class A motorhome.



The first Triple E 13' travel trailer manufactured in 1965.

For over forty years Triple E has produced style, comfort, durability and uncompromising quality in recreation vehicles. We've built our reputation by maintaining full control of the manufacturing process, and almost everything you see in the finished product has been built on site to our renowned high standards, plus those of the Canadian Standards Association or Recreational Vehicle Industry Association. Triple E was also one of the first RV manufacturers to achieve ISO 9001:2000 certification. If you demand the best in your RV, you've found it in Triple E.

Coach Net

Triple E is a proud partner of Coach Net, an extensive support program providing complete and fully paid roadside assistance, emergency road service, and special warranty support benefits that follow you throughout Canada and the U.S. Service is free for the first year of ownership and available at a nominal fee for subsequent years.

Coach Net's 24-Hour Customer Care

- Emergency roadside assistance, including tow vehicle
- Toll free technician hotline for operation and service support
- Toll free nationwide service appointment assistance
- Free custom trip routing and colour maps
- Warranty service at over 6,800 locations throughout North America
- Benefits such as free jump starts, tire changes, fuel delivery and lock-out service



Triple E Recreational Vehicles P.O. Box 1230, Winkler, Manitoba, Canada R6W 4C4 Telephone: (204) 325-4361 Fax: (204) 325-5241



www.tripleerv.com

Triple E Recreational Vehicles meet or surpass CSA-CRVA-RVIA standards covering electrical services, gas services, plumbing services and vehicular safety. Embassy Motorhomes exceed 96" in width. In some states, 96" is the maximum width of vehicles travelling some or all state roads. It is the responsibility of the owner to be familiar with the road usage laws of the states in which you travel. Product improvement is a continuing process at Triple E Recreational Vehicles. Thus, we reserve the right to change specifications on any or all products without prior notice; errors and omissions excepted. Triple E Recreational Vehicles is under no obligation to undertake modification to units manufactured prior to changes on specifications. Brochure pictures may be shown with optional equipment. Colours may not be exactly as shown due to the printing process. Please see your dealer for specific colours.

Two Year Limited Warranty

Triple E is proud to offer a two year limited warranty on structure as well as most major components. Please see your dealer for further details.

A reputation for excellence since 1965.



Founder P.W. Enns with the first Triple E Class A motorhome.



The first Triple E 13' travel trailer manufactured in 1965.

For over forty years Triple E has produced style, comfort, durability and uncompromising quality in recreation vehicles. We've built our reputation by maintaining full control of the manufacturing process, and almost everything you see in the finished product has been built on site to our renowned high standards, plus those of the Canadian Standards Association or Recreational Vehicle Industry Association. Triple E was also one of the first RV manufacturers to achieve ISO 9001:2000 certification. If you demand the best in your RV, you've found it in Triple E.

Coach Net

Triple E is a proud partner of Coach Net, an extensive support program providing complete and fully paid roadside assistance, emergency road service, and special warranty support benefits that follow you throughout Canada and the U.S. Service is free for the first year of ownership and available at a nominal fee for subsequent years.

Coach Net's 24-Hour Customer Care

- Emergency roadside assistance, including tow vehicle
- Toll free technician hotline for operation and service support
- Toll free nationwide service appointment assistance
- Free custom trip routing and colour maps
- Warranty service at over 6,800 locations throughout North America
- Benefits such as free jump starts, tire changes, fuel delivery and lock-out service



Triple E Recreational Vehicles P.O. Box 1230, Winkler, Manitoba, Canada R6W 4C4 Telephone: (204) 325-4361 Fax: (204) 325-5241



www.tripleerv.com

Triple E Recreational Vehicles meet or surpass CSA-CRVA-RVIA standards covering electrical services, gas services, plumbing services and vehicular safety. Embassy Motorhomes exceed 96" in width. In some states, 96" is the maximum width of vehicles travelling some or all state roads. It is the responsibility of the owner to be familiar with the road usage laws of the states in which you travel. Product improvement is a continuing process at Triple E Recreational Vehicles. Thus, we reserve the right to change specifications on any or all products without prior notice; errors and omissions excepted. Triple E Recreational Vehicles is under no obligation to undertake modification to units manufactured prior to changes on specifications. Brochure pictures may be shown with optional equipment. Colours may not be exactly as shown due to the printing process. Please see your dealer for specific colours.