

*Freedom to Travel*



**Leisure**  
Travel Vans Ltd.

*Freedom to Travel*



**Leisure**  
Travel Vans Ltd.

# Styling

Leisure Travel Vans styling cues of the eagle head design, dovetail roof, and recessed air conditioner from the original Freedom era, have been incorporated into the new generation Freedom II. A full fiberglass body with full body paint makes the vehicle stand out from the crowd and the Euro-designed interior decor will entice all around.



# Quality & Integrity

The Freedom II is aerodynamically engineered to reduce wind drag and significantly reduce road and coach noise. The fiberglass body panels won't dent or rust while providing superior strength characteristics. Everyone will notice the sleek bodylines and high quality automotive grade full body paint.

The exterior body features storage and utility compartments accessed through durable reinforced doors, with stainless steel locks utilizing a master key for convenience.



# Simple Solutions

Connections for city water hookup, electrical, phone/internet, and cable TV are all conveniently located behind one of the exterior locking compartments. Propane and water fill, exterior shower and hassle free dump system valves are also located in the compartment, which is illuminated by a manually controlled light.



# Styling

Leisure Travel Vans styling cues of the eagle head design, dovetail roof, and recessed air conditioner from the original Freedom era, have been incorporated into the new generation Freedom II. A full fiberglass body with full body paint makes the vehicle stand out from the crowd and the Euro-designed interior decor will entice all around.



# Quality & Integrity

## Simple Solutions

Connections for city water hookup, electrical, phone/internet, and cable TV are all conveniently located behind one of the exterior locking compartments. Propane and water fill, exterior shower and hassle free dump system valves are also located in the compartment, which is illuminated by a manually controlled light.



The Freedom II is aerodynamically engineered to reduce wind drag and significantly reduce road and coach noise. The fiberglass body panels won't dent or rust while providing superior strength characteristics. Everyone will notice the sleek bodylines and high quality automotive grade full body paint.

The exterior body features storage and utility compartments accessed through durable reinforced doors, with stainless steel locks utilizing a master key for convenience.



# Enjoy the Freedom

A commitment to personalized service is our guarantee to make your journey the ultimate RV experience. Leisure Travel Vans amalgamation of luxury, comfort, and performance provide you the opportunity to obtain the perfect motorhome.

A legend reborn - Over the years, Leisure Travel Vans has introduced an array of notable motorhomes, from the widebody Freedom, the innovative Independence mobility Class B, to the more recent "Free Spirit", the first Class B Motorhome built in North America using the Sprinter Chassis. Now, we introduce the next generation of widebody motorhomes: the "Freedom II"



## Comfort, Space, Quality & Safety

Superb interior refinement and irresistible charm have been combined with efficient use of interior space and a host of safety features to ensure that you will be ready to seek out your new journey, no matter where the destination.

## Built to Last

Only the Best - The Freedom II sets a new standard of construction and styling that surpasses all motorhomes on the market today. The fit, finish and quality that customers are accustomed to and recognize Leisure Travel Vans as, has been the starting point for the Freedom II Serenity.

# Enjoy the Freedom

A commitment to personalized service is our guarantee to make your journey the ultimate RV experience. Leisure Travel Vans amalgamation of luxury, comfort, and performance provide you the opportunity to obtain the perfect motorhome.

A legend reborn - Over the years, Leisure Travel Vans has introduced an array of notable motorhomes, from the widebody Freedom, the innovative Independence mobility Class B, to the more recent "Free Spirit", the first Class B Motorhome built in North America using the Sprinter Chassis. Now, we introduce the next generation of widebody motorhomes: the "Freedom II"



## Comfort, Space, Quality & Safety

Superb interior refinement and irresistible charm have been combined with efficient use of interior space and a host of safety features to ensure that you will be ready to seek out your new journey, no matter where the destination.

## Built to Last

Only the Best - The Freedom II sets a new standard of construction and styling that surpasses all motorhomes on the market today. The fit, finish and quality that customers are accustomed to and recognize Leisure Travel Vans as, has been the starting point for the Freedom II Serenity.

# Relax & Enjoy the Ride



Comfort while driving or passengering is a must in any vehicle. The Freedom II may be equipped with power swivel captain chairs, a carbon fiber accented instrument panel, stereo system, a back up camera assist system and various other features to ensure such comfort is achieved.



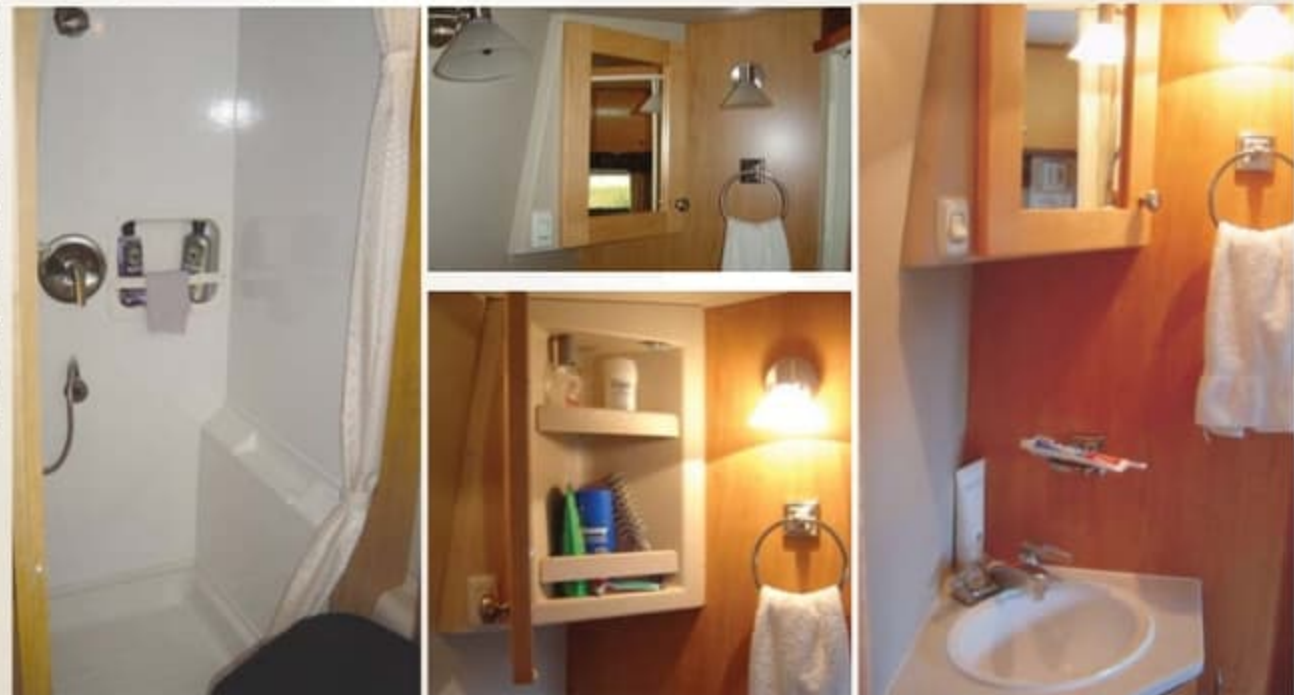
The level of comfort continues with in the bedroom area. A Serta mattress sits atop your stationary bed with plenty of storage below. Replace the stationary bed with an optional electric sofa to add the versatility of an interchangeable sofa to bed with the push of a button. The sofa is equipped with 3 seatbelts.



The flexibility of the front dinettes converted to a 48" x 80" bed will guarantee that your family or guests will enjoy a restful nights sleep on the dual density, soft foam cushions. The dinette table is easily folded up and stored under the seats.



The rear bath includes a neo-angled shower area with wall surround, and a flexible showerhead with a single control faucet. In a separate area from the shower is the Thetford marine toilet, vanity with sink and dual controlled faucet, towel and toilet paper holders, medicine cabinet with mirror and dual lighting with evening lights, all surrounded by accordion style privacy curtains.



# Relax & Enjoy the Ride



Comfort while driving or passengering is a must in any vehicle. The Freedom II may be equipped with power swivel captain chairs, a carbon fiber accented instrument panel, stereo system, a back up camera assist system and various other features to ensure such comfort is achieved.



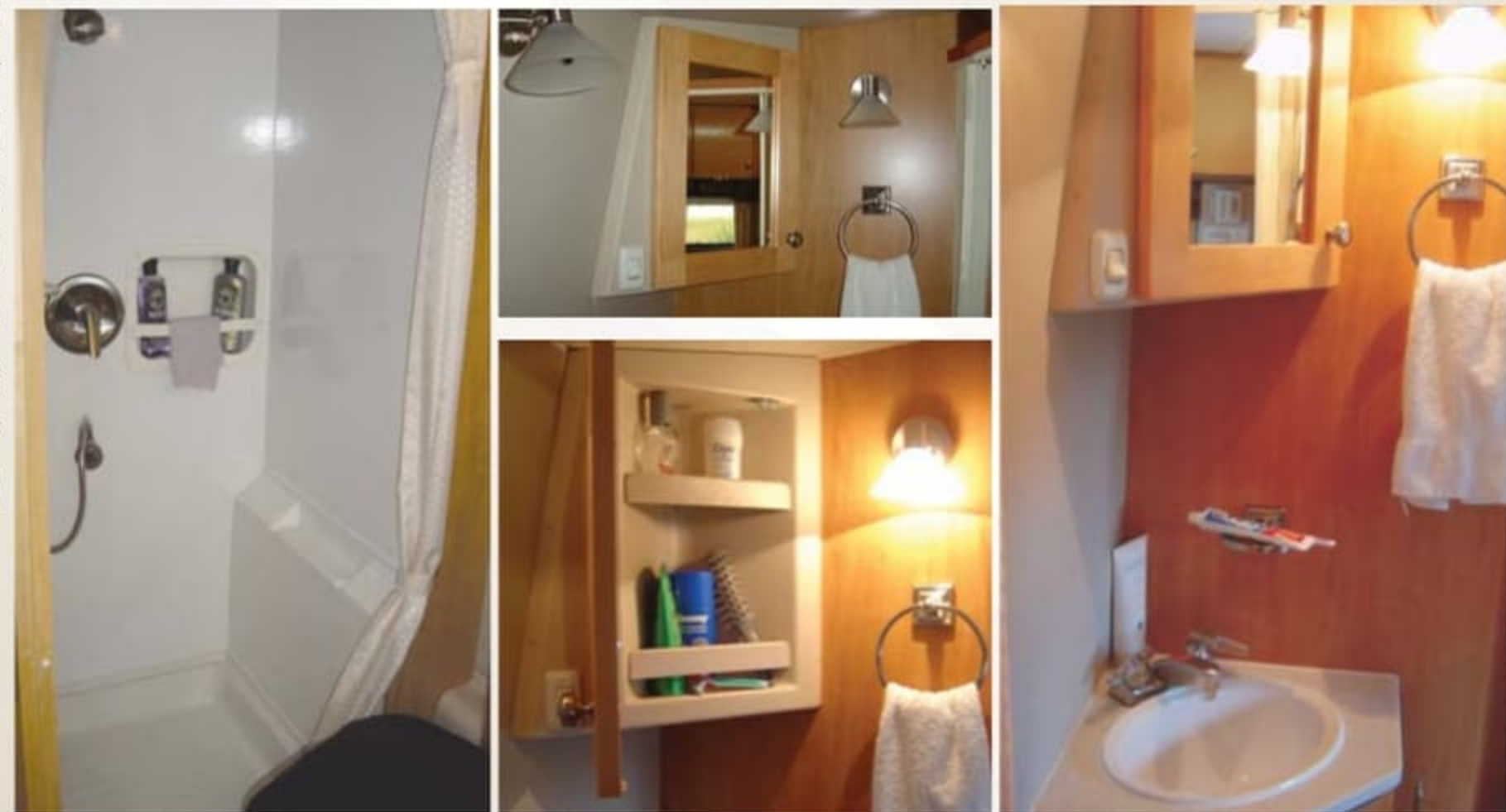
The level of comfort continues with in the bedroom area. A Serta mattress sits atop your stationary bed with plenty of storage below. Replace the stationary bed with an optional electric sofa to add the versatility of an interchangeable sofa to bed with the push of a button. The sofa is equipped with 3 seatbelts.



The flexibility of the front dinettes converted to a 48" x 80" bed will guarantee that your family or guests will enjoy a restful nights sleep on the dual density, soft foam cushions. The dinette table is easily folded up and stored under the seats.



The rear bath includes a neo-angled shower area with wall surround, and a flexible showerhead with a single control faucet. In a separate area from the shower is the Thetford marine toilet, vanity with sink and dual controlled faucet, towel and toilet paper holders, medicine cabinet with mirror and dual lighting with evening lights, all surrounded by accordion style privacy curtains.





# Leisure Travel Vans Features & Benefits



**SERTA MATTRESS**



**23" LCD TV**



**MICROWAVE STD  
MICROWAVE/CONVECTION OVEN OPT**



**CLOSET/DRAWERS**



**EUROPEAN STYLING CABINETS**



**STOVE**



**SINK**



**BOSE SUB**

**AERODYNAMIC  
FIBERGLASS ROOF**



**TAIL/CLEARANCE LIGHTS**

**SKYLIGHT**



# Leisure Travel Vans Features & Benefits



**SERTA MATTRESS**



**23" LCD TV**



**MICROWAVE STD  
MICROWAVE/CONVECTION OVEN OPT**



**CLOSET/DRAWERS**



**EUROPEAN STYLING CABINETS**



**STOVE**



**SINK**



**BOSE SUB**

**AERODYNAMIC  
FIBERGLASS ROOF**



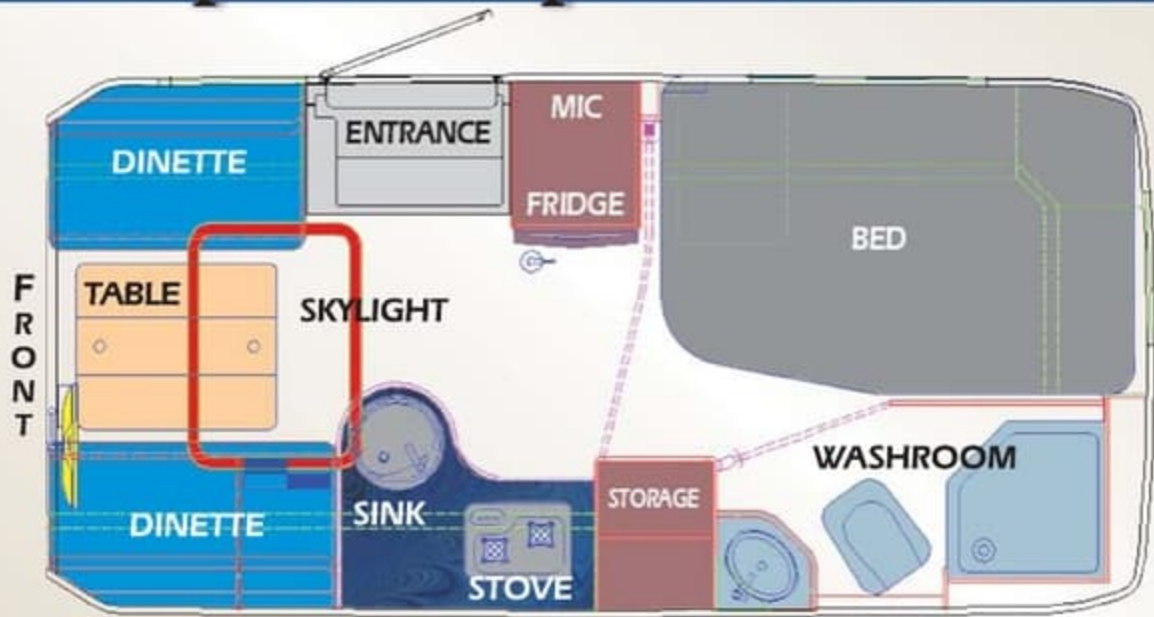
**TAIL/CLEARANCE LIGHTS**



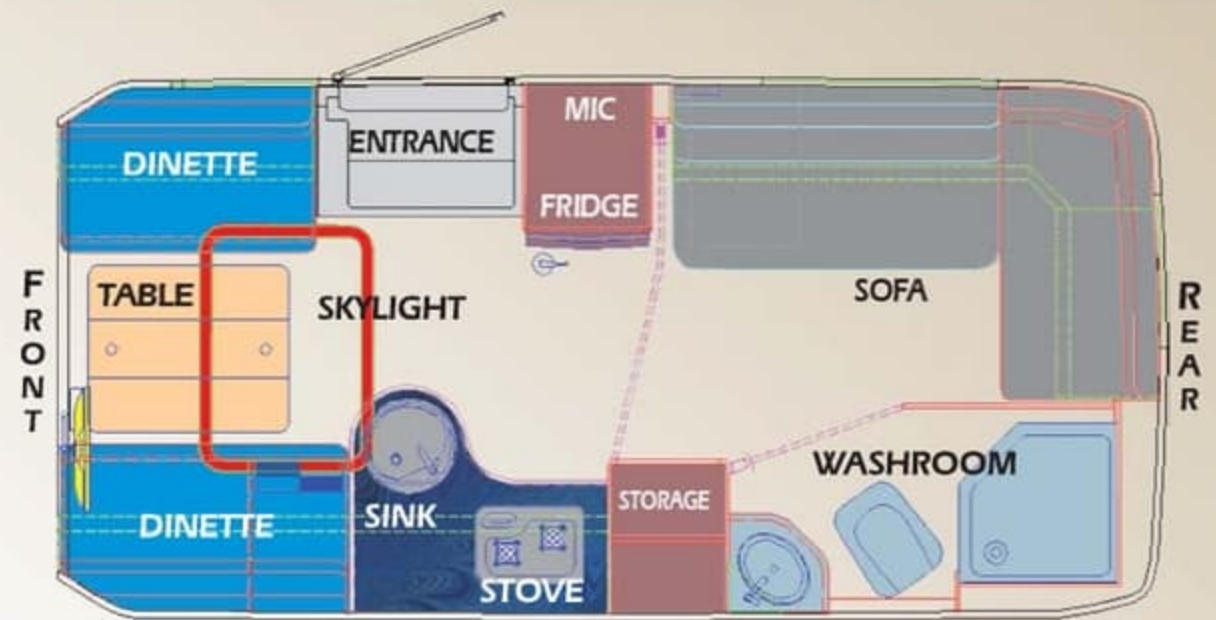
**SKYLIGHT**



# Floorplans/Options/Colors



**Mattress**



**Sofa**

## Cabinetry



## Fabric

**Cloth Sofa  
&  
Front  
Dinettes**



Coltrane



Lakeshore

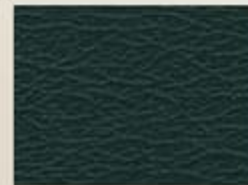
**Cloth Front Seats  
& Bedspread**

Ultraleather option for  
sofa, front seats  
and/or front dinettes

\* Not exactly as shown



B  
L  
A  
C  
K



C  
R  
E  
A  
M

## Exterior

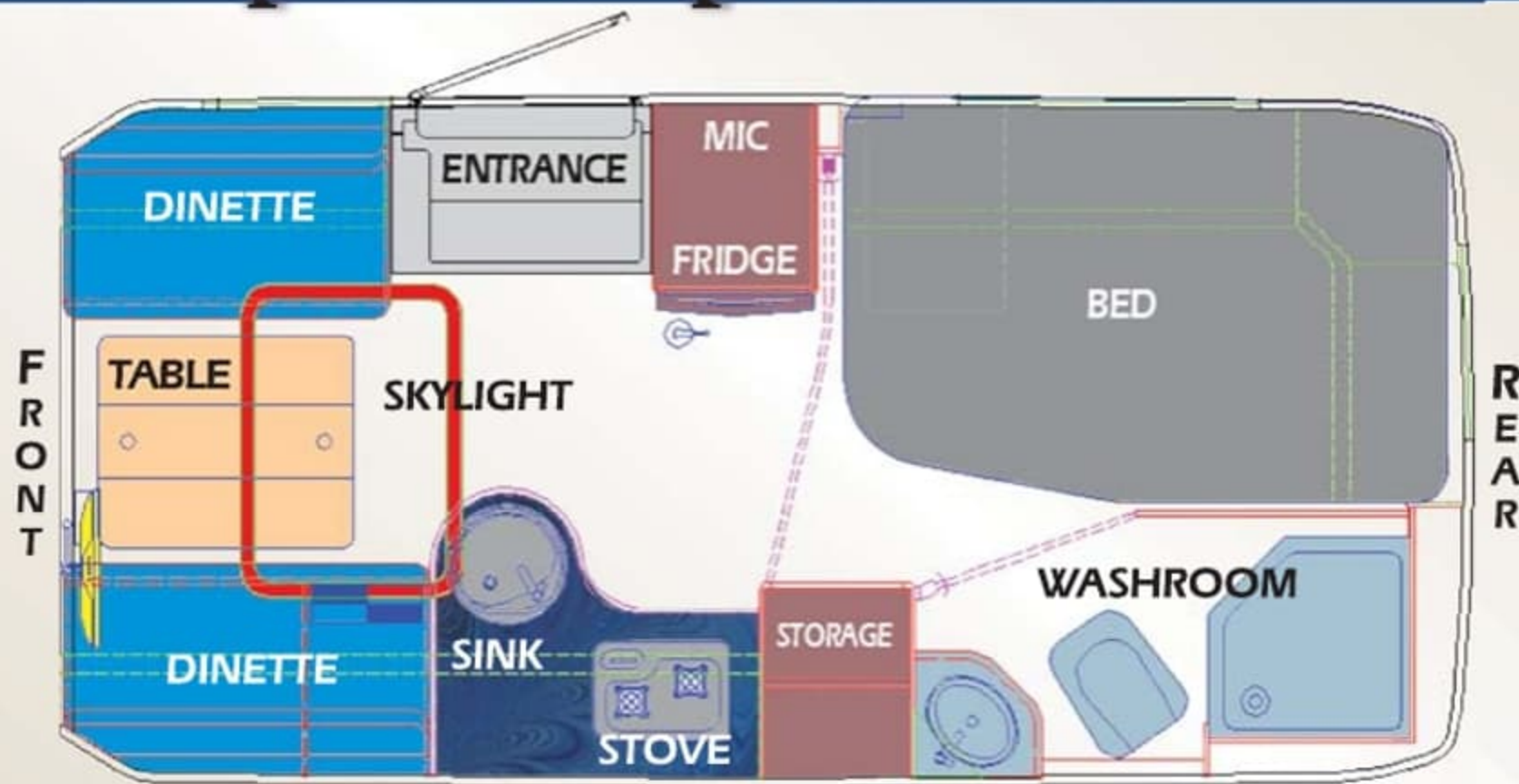
**Standard Graphics (Decals)**



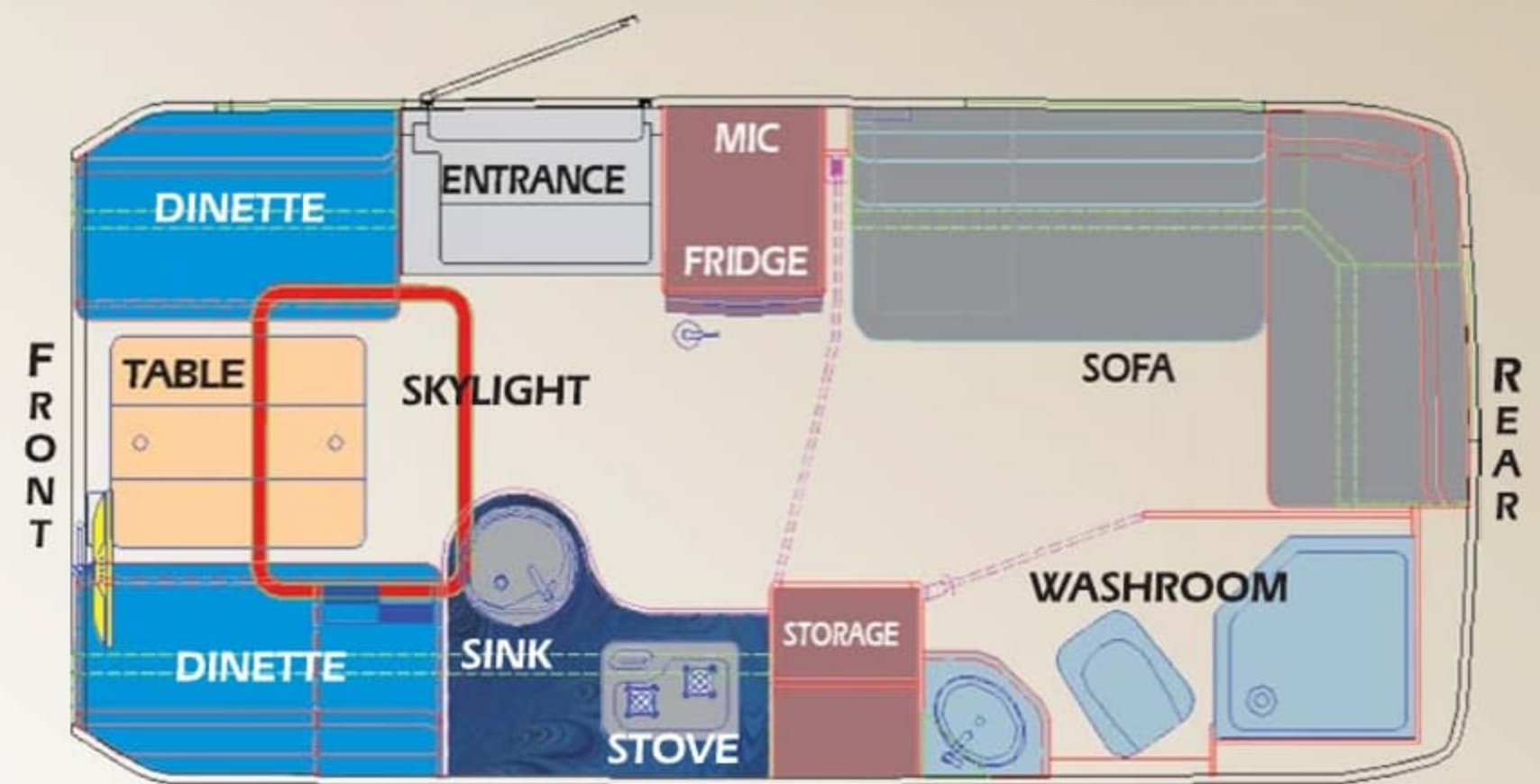
**Optional Upgraded  
Paint & Graphics**



# Floorplans/Options/Colors



**Mattress**



**Sofa**

## Cabinetry



## Fabric

**Cloth Sofa  
&  
Front  
Dinettes**



Coltrane



Lakeshore

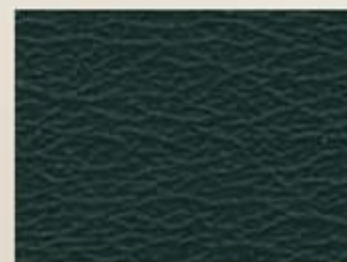
**Cloth Front Seats  
& Bedspread**

Ultraleather option for  
sofa, front seats  
and/or front dinettes

\* Not exactly as shown



B  
L  
A  
C  
K



C  
R  
E  
A  
M

## Exterior

**Standard Graphics (Decals)**



**Optional Upgraded  
Paint & Graphics**



# Specifications

## Weights & Measures

Length	23' 6"
Exterior Height	9' 6" (@ top of a/c)
Exterior Body Width	8'
Interior Height	6' 3"
Interior Width	7' 5"
Fresh water capacity (w/ 5gal. Hot water heater)	50 gal.
Grey Water Tank	36 gal.
Black Water Tank	36 gal.
LP Capacity	57 lbs.
Fuel Capacity	26.4 gal.
GCWR	13,700 lbs.
GVWR	10,200 lbs.
GAWR(front)	3859 lbs.
GAWR (rear)	7056 lbs.
Wheelbase	159"
Rear Bed	82" x 55"
Front Bed	48" x 80"
Chassis	Daimler Chrysler Sprinter 3500 Cab Chassis
Engine	2.7 liter 5-cylinder Mercedes Benz, Turbocharged Diesel
Horsepower	154 HP @ 3800 RPM
Torque	243-ft. lbs. @ 1,600 - 2,400 RPM
Fuel System	CDI (Common Direct Rail Injection)
Transmission	Mercedes Benz 5-speed Automatic w/Overdrive
Steering:	Power Assisted Rack and Pinion
Suspension	Independent Front Suspension
Brakes	4-wheel Hydraulic Disc with ABS
Maintenance Protection	Service Intervals of 10,000 miles Anti-Theft Deterrent Security (USP Immobilizer)

# Standard Equipment

Microwave, refrigerator, coffee maker, glass top stove & sink, fantastic fan with rain sensor, private bath, furnace, day/night shades with valances, SERTA mattress, front dual dinettes with table, stereo system with Radio/CD/DVD, carpet and linoleum, manual skylight, front bumper, running lights, exterior paint and decal package, exterior shower, urethane and silent ride insulation, class 3 trailer hitch, Firestone Ride Rite Air Suspension with dual compressor & controls, grey/black/fresh water tanks, water heater, special wheel covers, dual maintenance free coach batteries, front carpeted floor mats, individually controlled halogen and fluorescent lights, pull out pantry, illuminated interior step, electric exterior step

# Optional Equipment

- Electric Cloth or Ultraleather Sofa • Ultraleather Dinettes and Front Seats
- Front Driver/Passenger Swivel • Flexsteel Captains Chairs/Power/Swivel
- Cab Door Window Screens • Grill Screen • Large Skylight with Remote
  - Solid Surface Countertop • Microwave/Convection Oven
- 23" LCD/TV with Antenna • "Carbon Fiber" Accented Instrument Panel and Door Inserts • Back Up Camera with Monitor • Satellite Radio • Bug Deflector
  - Awning • Roof Air Conditioner with Heat Strip
- Premium Upgraded Paint & Graphics • Generator • Trailer Wiring
  - Inverter • Painted Side & Rear Windows

# Warranty

**Leisure Travel Vans Warranty** - 3 year/36,000 mile or 60,000 km covering all craftsmanship entailed in the manufacturing of the motorhome only. This does not include the chassis or appliances.

**Appliances Warranty** - All appliance warranties are covered by the individual warranties offered by their respective manufacturers.

**Chrysler Warranty** - Basic 3-year/36,000 mile or 60,000 km Limited warranty. See an authorized Sprinter dealer for more information on the chassis warranty.

# Specifications

## Weights & Measures

Length	23' 6"
Exterior Height	9' 6" (@ top of a/c)
Exterior Body Width	8'
Interior Height	6' 3"
Interior Width	7' 5"
Fresh water capacity (w/ 5gal. Hot water heater)	50 gal.
Grey Water Tank	36 gal.
Black Water Tank	36 gal.
LP Capacity	57 lbs.
Fuel Capacity	26.4 gal.
GCWR	13,700 lbs.
GVWR	10,200 lbs.
GAWR(front)	3859 lbs.
GAWR (rear)	7056 lbs.
Wheelbase	159"
Rear Bed	82" x 55"
Front Bed	48" x 80"
Chassis	Daimler Chrysler Sprinter 3500 Cab Chassis
Engine	2.7 liter 5-cylinder Mercedes Benz, Turbocharged Diesel
Horsepower	154 HP @ 3800 RPM
Torque	243-ft. lbs. @ 1,600 - 2,400 RPM
Fuel System	CDI (Common Direct Rail Injection)
Transmission	Mercedes Benz 5-speed Automatic w/Overdrive
Steering:	Power Assisted Rack and Pinion
Suspension	Independent Front Suspension
Brakes	4-wheel Hydraulic Disc with ABS
Maintenance Protection	Service Intervals of 10,000 miles Anti-Theft Deterrent Security (USP Immobilizer)

# Standard Equipment

Microwave, refrigerator, coffee maker, glass top stove & sink, fantastic fan with rain sensor, private bath, furnace, day/night shades with valances, SERTA mattress, front dual dinettes with table, stereo system with Radio/CD/DVD, carpet and linoleum, manual skylight, front bumper, running lights, exterior paint and decal package, exterior shower, urethane and silent ride insulation, class 3 trailer hitch, Firestone Ride Rite Air Suspension with dual compressor & controls, grey/black/fresh water tanks, water heater, special wheel covers, dual maintenance free coach batteries, front carpeted floor mats, individually controlled halogen and fluorescent lights, pull out pantry, illuminated interior step, electric exterior step

# Optional Equipment

- Electric Cloth or Ultraleather Sofa • Ultraleather Dinettes and Front Seats
- Front Driver/Passenger Swivel • Flexsteel Captains Chairs/Power/Swivel
- Cab Door Window Screens • Grill Screen • Large Skylight with Remote
  - Solid Surface Countertop • Microwave/Convection Oven
- 23" LCD/TV with Antenna • "Carbon Fiber" Accented Instrument Panel and Door Inserts • Back Up Camera with Monitor • Satellite Radio • Bug Deflector
  - Awing • Roof Air Conditioner with Heat Strip
- Premium Upgraded Paint & Graphics • Generator • Trailer Wiring
  - Inverter • Painted Side & Rear Windows

# Warranty

**Leisure Travel Vans Warranty** - 3 year/36,000 mile or 60,000 km covering all craftsmanship entailed in the manufacturing of the motorhome only. This does not include the chassis or appliances.

**Appliances Warranty** - All appliance warranties are covered by the individual warranties offered by their respective manufacturers.

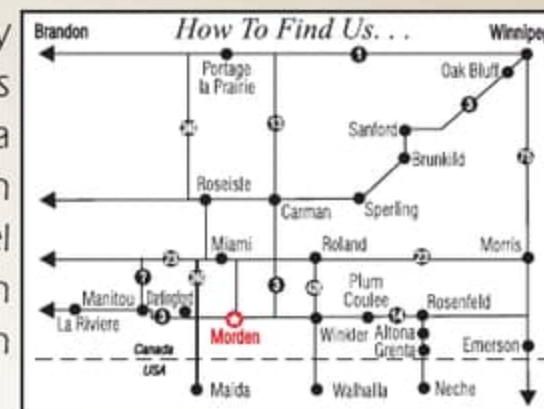
**Chrysler Warranty** - Basic 3-year/36,000 mile or 60,000 km Limited warranty. See an authorized Sprinter dealer for more information on the chassis warranty.

# Leaders in Class B Innovations



Leisure Travel Vans (1999) Ltd. takes pride in the high level of quality and finish that we are known for. Components are developed and fabricated on site in beautiful Morden, Manitoba Canada, approximately 130 miles North of Grand Forks, ND. We are open for plant tours by appointment Monday-Friday. Please call ahead to book your tour today.

By being a part of the LTV family, you will receive quarterly newsletters and you will be invited to the annual owner's rally, located 7 miles north of the factory. The Rally is a weekend full of fun ways for owners to meet and learn more about the travel possibilities of an LTV. Leisure Travel Vans also assists the various regional owners' chapters with their own area rallies. The rallies are a great way to maintain valuable relationships with other LTV family members.



## FREEDOM II

SERENITY II

## Leisure

Travel Vans Ltd.

**Travel More and Enjoy More with Leisure!**

Visit: [www.leisurevans.com](http://www.leisurevans.com)  
 or call 1-877-288-8088  
 for product line and  
 dealer network information



Leisure Travel Vans (1999) Ltd.  
 Phone: 1-204-822-3009  
 Fax: 1-204-822-5505  
 E-mail: [general@leisurevans.com](mailto:general@leisurevans.com)

Corporate Office  
 Hwy. 3 E. @ Rd 27 W.  
 Box 1208  
 Morden, Manitoba, Canada  
 R6M 1B1

US Address  
 (Mailing Only)  
 Box 68  
 Walhalla, North Dakota  
 58282

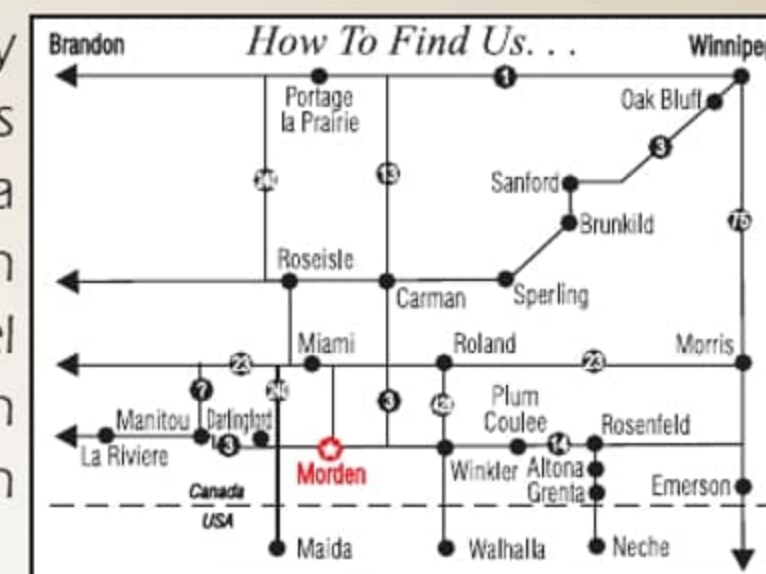
\*Product improvement is a continuing process at Leisure Travel Vans (1999) Ltd. Thus we reserve the right to change the specifications on any and all products without prior notice; errors and omissions expected. Leisure Travel vans (1999) Ltd. is under no obligation to undertake modifications to units manufactured prior to changes in specifications. Units shown with optional equipment.

# Leaders in Class B Innovations



Leisure Travel Vans (1999) Ltd. takes pride in the high level of quality and finish that we are known for. Components are developed and fabricated on site in beautiful Morden, Manitoba Canada, approximately 130 miles North of Grand Forks, ND. We are open for plant tours by appointment Monday-Friday. Please call ahead to book your tour today.

By being a part of the LTV family, you will receive quarterly newsletters and you will be invited to the annual owner's rally, located 7 miles north of the factory. The Rally is a weekend full of fun ways for owners to meet and learn more about the travel possibilities of an LTV. Leisure Travel Vans also assists the various regional owners' chapters with their own area rallies. The rallies are a great way to maintain valuable relationships with other LTV family members.



## FREEDOM II

### SERENITY II

## Leisure

### Travel Vans Ltd.

**Travel More and Enjoy More with Leisure!**

Visit: [www.leisurevans.com](http://www.leisurevans.com)

or call 1-877-288-8088

for product line and

dealer network information



Leisure Travel Vans (1999) Ltd.  
 Phone: 1-204-822-3009  
 Fax: 1-204-822-5505  
 E-mail: [general@leisurevans.com](mailto:general@leisurevans.com)

Corporate Office  
 Hwy. 3 E. @ Rd 27 W.  
 Box 1208  
 Morden, Manitoba, Canada  
 R6M 1B1

US Address  
 (Mailing Only)  
 Box 68  
 Walhalla, North Dakota  
 58282

\*Product improvement is a continuing process at Leisure Travel Vans (1999) Ltd. Thus we reserve the right to change the specifications on any and all products without prior notice; errors and omissions expected. Leisure Travel vans (1999) Ltd. is under no obligation to undertake modifications to units manufactured prior to changes in specifications. Units shown with optional equipment.