

*"Quality Construction, Customer Service & Value -
We Have It All"*



Intermountain RV's 100% all aluminum frame work, combined with the standard Filon[®] exterior, provides superior strength yet is lighter than the competition.



Intermountain RV located in NE Oregon, next to the Eagle Cap Mountain range, was started in the winter of '2000. We are a small company consisting of family, friends and hand picked employee's from the industry that are the best of the best.

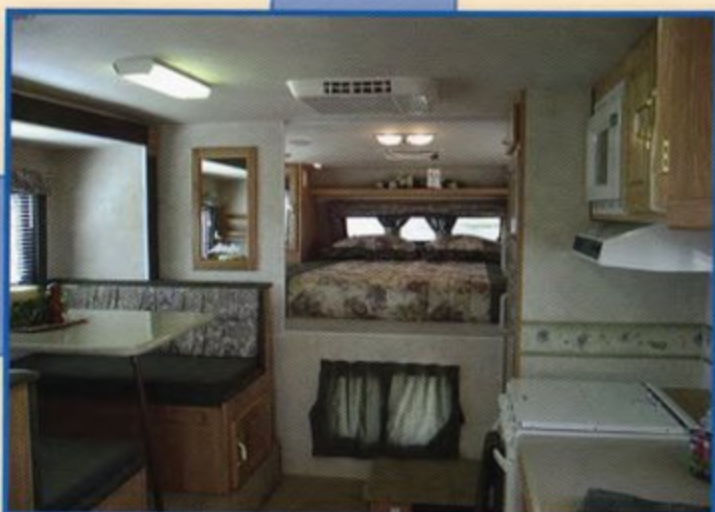
Our goal is to have the best quality, construction, customer service and value; out on the market. Only 1 to 2 campers go out the door each day with a thorough inspection in order to meet our very high standard of quality. Quality above quantity.

The construction of an Eagle Cap is what we believe to be the best on the market. Our all welded aluminum framing can't be beat. Both internal and external aluminum engineered framing including 3" trusses, 16" on center, and aluminum floor joists.

Striving for the best in customer service; we are small enough that we can make changes if needed. A customer can always talk to one of the owners with any questions, concerns, or ideas about their camper. Stop by for a tour of the plant or servicing direct from the factory.

Last but not least is value. All the owners wear many hats and are very involved in every aspect of production. We also have very low overhead. This allows us to add more standard features, better quality parts and achieve a higher standard of construction so that we can offer the best in camper value.

We believe that our pickup campers are the best built, highest quality campers on the market today.



All of our Eagle Cap pickup campers offer: Complete welded Aluminum construction, Fiberglass exterior, full 2" walls with R-11 Foam board insulation and all enclosed tanks for cold weather.

Our 800 Lite is the only Lite that has these standard features: Welded Aluminum construction, 2" walls, Fiberglass exterior, R-11 Foam board insulation, all enclosed tanks, all wood cabinets with screwed face frames, 34 gallons of fresh water, extended cab with Queen mattress, full skirt package for long or short box pickups and they are made to the same standards as our other models.

Our 800 Model is unlike any other camper in its class. It offers the same sized appliances and capacities as our larger models, tastefully fitted into an 8' camper. The 800 Model comes with a rollover couch for extra floor space. This camper also fits on long or short box pickups.

Our 850 model is designed for a long or short box pickup and is available with or without a slide-out. It has large capacities, a dinette slide-out, larger bathroom and generator capabilities. It has all the same features as our larger campers but can also fit a short box pickup.

Our 950 model is our best selling model. It is designed for a long box pickup and is available with or without a slide-out. It has a very nice comparison of space and size.

Our 1150 model is designed for a long box pickup. It also is available with or without a slide-out. It has a large dry-bath, very open floor plan and lot's of storage and room.

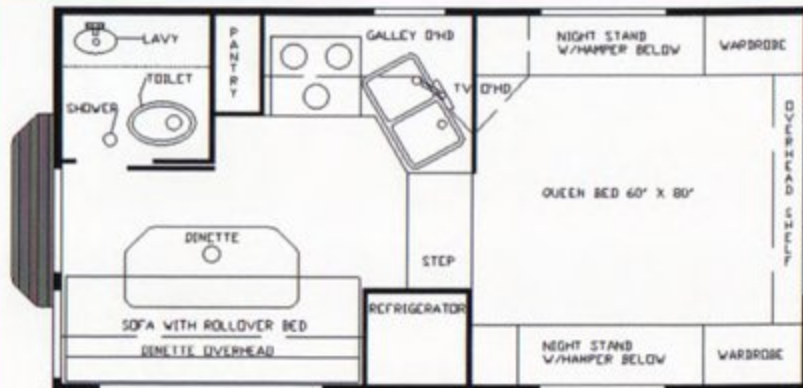
	Blue	Tan	Green
Carpet			
Solid Cloth			
Patterned Cloth			
Solid Upholstery			
Patterned Upholstery			

Five Great Floor Plans to Choose From!

800 Lt. Long or Short



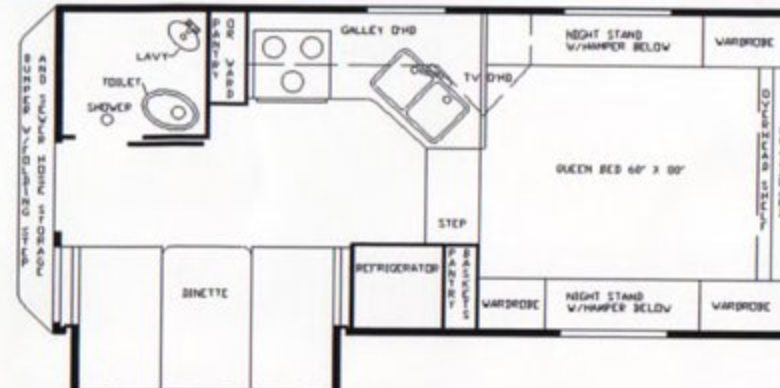
800 Long or Short Box



850 Long or Short Box w/wo Slide



950 Long Box w/wo Slide



1150 Long Box w/wo Slide



Eagle Cap VS. The Other Guys - Compare the Construction, Quality and Value!

- 100% Welded aluminum structure, all windows and doors have welded in radius blocks VS. wood sticks stapled together and plastic radius blocks stapled in.
- Engineered aluminum trusses 16" on center that can support over 200 lbs VS. wood trusses that snap with 30 lbs. Ours is a true walk on roof.
- The roof is sealed 4 ways on every edge with standard gutters and awning rails on all ends VS. sealed 2 ways and no rail or gutters.
- 3" crowned roof vs flat.
- Aluminum stringers in floor with 5/8 OSB floors ensure a solid no give floor VS. 1/2" plywood which is spongy.
- 6 Steel supports under tanks keeps you from having to support the bottom of your camper when full of water VS. no supports losing the ability to take your camper off when full of water.
- One piece fiberglass front wrapped all the way around without seams VS. 3 pieces with seams.
- Radius cornered windows, doors, lug doors VS. square and outdated looking ones.
- Taller and wider entrance door with large window for backing up VS. small doors with small or no lower window.
- 2" walls with R-11 insulation VS. 1 3/4" with R-7 or R-9.
- Completely enclosed and heated tanks VS. plumbing lines, tanks and Lp lines hanging outside of the unit.

- Powder coated aluminum bumper VS. painted steel that rusts or no bumper at all.
- Red-hot and blue-cold water lines that are freeze proof VS. same color hot/cold lines that are not freeze proof.
- Battery disconnect switch VS. none.
- Wood cabinet face frames screwed together VS. pressboard and stapled.
- Every cabinet or compartment is fully finished inside VS. only the obvious ones at best.

Standard Features

- Standard luggage rack and ladder VS. optional.
- Standard Gas/Electric/DSI water heater VS. optional.
- Standard 6 cu. Ft. double door fridge VS. optional.
- Standard bi-fold range cover VS. optional.
- Standard inner spring queen mattress with pillowcases and bed spread VS. optional.
- Standard pump by-pass/semi-auto winterization VS. optional.
- Standard battery disconnect switch VS. optional.

NOTE: Some of these features may be on certain competitive units, where as others may not.



**Superior Strength
All Aluminum Frame Work
Filon® Exterior Lightweight**



Camper Specifications & Features

Options	800Lt.	800	850	950	1150
Sleeps	4	4	4	4	4
Converter w/ charger	45 Amps	45 Amps	45 Amps	45 Amps	45 Amps
LP gas bottle	1-20 Lb	1-30 Lb	2-20 Lb	2-20 Lb	2-20 Lb
Gas / water heater	6 Gal.	6 Gal.	6 Gal.	6 Gal.	6 Gal.
Furnace	20,000BTU	20,000BTU	20,000BTU	20,000BTU	20,000BTU
Dometic Refrigerator	4 CF	6 CF dbl dr	6 CF dbl dr	6 CF dbl dr	6 CF dbl dr
Floor length	8'6"	8'4"	8'11"	9'10"	11'8"
Over-all length	15'10"	16'5"	17'3"	18'2"	19'10"
Width	96"	96"	96"	96"	96"
Interior height	78"	78"	78"	78"	78"
Fresh water	34 Gal.	46 Gal.	46Gal.	46Gal.	46Gal.
Grey / black water	11/11 Gal.	25/21Gal.	26/22 Gal.	26/22 Gal.	26/28 Gal.
Est. dry weight	1,990. Lb.s	2,350. Lb.s	2,720. Lb.s	2,900. Lb.s	3,250. Lb.s
Est. wet weight	2,282. Lb.s	2,790. Lb.s	3,100. Lb.s	3,280. Lb.s	3,658. Lb.s
Options	800Lt.	800	850	950	1150
12V Power Jacks	X	X	N/A	N/A	N/A
12V Power Jacks w/ Quick Release	N/A	N/A	X	X	X
Fantastic Power Fan	X	X	X	X	X
Swing Out Jacks	X	X	X	X	X
Stereo AM/FM CD	X	X	X	X	X
TV Antenna	X	X	X	X	X
Microwave Oven	X	X	X	X	X
Air Conditioning 13,500 BTU	X	X	X	X	X
7' Rear Awning	X	X	X	X	X
Slide Out Topper	N/A	N/A	X	X	X
Generator Ready	N/A	N/A	X	X	X
2.5 KW Onan Generator	N/A	N/A	X	X	X
Solar Panel 50 Watt.	N/A	X	X	X	X
Duo Therm Thermostat	N/A	X	X	X	X
NW Edition	N/A	X	X	X	X
Short Box Package	N/A	N/A	X	N/A	N/A
Rear Bumper	N/A	X	S	S	S
8' Side Awning	X	X	N/A	N/A	N/A
9' Side Awning	N/A	N/A	X	X	N/A
11' Side Awning	N/A	N/A	N/A	N/A	X
Convenience Package	N/A	N/A	N/A	X	X
Water Filter	X	X	X	X	X
Range With Oven	X	S	S	S	S
Range Cover	X	S	S	S	S
6 Cubic Ft. Dbl. Door Refrigerator	X	S	S	S	S
Front Window	X	S	S	S	S
12V. Bathroom Power Fan	X	S	S	S	S
Overhead Bunk	X	X	X	X	X
Outside Shower	X	S	S	S	S
Rollover Couch	X	S	N/A	N/A	N/A
Delete Slide Out	S	S	X	X	X

Construction Features

- 100% welded aluminum frame construction
- 2" wall Filon® exterior
- Heated tanks in floor
- R-11 foamboard insulation in walls & floor
- R-11 insulated roof
- 3" crown roof w/ aluminum trusses
- Metal drawer guides
- All wood cabinets w/ screwed face frames
- Solid oak cabinet doors

Safety Features

- Safety glass tinted thermal pane windows
- LPG detector
- Carbon Monoxide detector
- Smoke detector
- Fire extinguisher
- Stainless steel tie down anchors integrated into aluminum structure
- Lockable water fill
- Back up lights

Appliance & Electrical Features

- Battery disconnect switch
- Wired for microwave
- Wired for solar panel
- 45-Amp. converter w/ battery charger
- GFI circuit protection
- GFI patio receptacle
- Wall switched interior lights
- Pre-wired for air-conditioner
- 6-Gal. DSI gas/elect. WH, w/ insulated porcelain tank
- 20M BTU auto. ignition furnace
- 6-CF dbl. door refrigerator

- Range hood w/ light, fan & systems monitor
- Stereo ready
- LPG dual tanks
- Pump by-pass / semi-auto winterization
- Power roof vent in bath

Standard Features

- Solid surface counter tops
- Special exterior graphics
- 3 exterior lights
- Outside shower
- Full walk on roof
- Large bathroom skylight
- One piece 12yr. rubber roof
- Roof rack & ladder
- Sewer pipe storage in rear bumper w/ folding step
- Rubber truck bed bumpers w/ folding step
- Radius windows & entry door
- Large rearview window
- Manual camper jacks /pre-wired for electric
- Raised panel doors
- Queen inner-spring mattress
- Bed spread w/ pillow shams
- Mini-blinds w/ deluxe window valances
- Halogen adjustable reading lights
- Pantry w/ slide-out shelves
- Spice & magazine racks
- Queen ext. cab w/ bedside storage
- Cab-over divider curtain
- 3 Burner range & oven w/ bi-fold cover
- Lg. dbl. sink
- Cutting board sink cover
- Etched mirrors in feature overheads
- Phone jack / 12V amplified TV jack

Intermountain RV provides a full 2 year warranty from the date of purchase against defects in materials and workmanship. Individual manufacturer's warranties cover separate appliances and components used on our product. Consult your dealer or warranty card supplied in the warranty packet for details. All specifications, equipment and prices are subject to change without prior notice. Production of specific models is subject to seasonal scheduling demands. Intermountain RV reserves the right to improve models without incorporating these changes to models provided earlier. Consult your local truck and RV dealers to assure a safe and proper match between your truck and our product.



Intermountain RV

59999 Smith Loop

La Grande, OR 97850

(541) 663-8713

email: intermountainrv@eoni.com

web: eaglecapcampers.com