



# DURANGO™

Travel Trailers and Fifth Wheels



*"Together"...*  
*Discover More!*



# KZ DURANGO™

Travel Trailers and Fifth Wheels



*“Together”...  
Discover More!*





Experience the great outdoors like never before in your K-Z Durango travel trailer or fifth wheel. Safety and convenience are key features built into this unit, so you can relax and enjoy your vacation. Whether you're heading down state or cross country, the Durango will take you there in style... together.





Experience the great outdoors like never before in your K-Z Durango travel trailer or fifth wheel. Safety and convenience are key features built into this unit, so you can relax and enjoy your vacation. Whether you're heading down state or cross country, the Durango will take you there in style... together.





315 RK shown with Blue Ridge décor



With an 8-cubic-foot refrigerator, a three-burner range, oven and built-in microwave, you may never go home. This convenient kitchen has just what you need to cook a gourmet dinner or whip together sandwiches before the family heads out for a day of biking. Fluorescent lighting above the kitchen sink provides plenty of light. There's even a nightlight, so you can find your way to the fridge for a late night snack.

  
**DURANGO**<sup>™</sup>  
by K-Z





315 RK shown with Blue Ridge décor



With an 8-cubic-foot refrigerator, a three-burner range, oven and built-in microwave, you may never go home. This convenient kitchen has just what you need to cook a gourmet dinner or whip together sandwiches before the family heads out for a day of biking. Fluorescent lighting above the kitchen sink provides plenty of light. There's even a nightlight, so you can find your way to the fridge for a late night snack.

**DURANGO**<sup>™</sup>  
by K-Z





After a long day of fishing or sightseeing, the comfort of your sofa might be what you need. Cozy up next to the fireplace or have a family movie night in the spacious living area. (fireplace optional)



The lush decor of your master suite features a color-coordinated bedspread on your queen-sized bed, a decorative border and window treatments. A full closet with sliding mirrored doors makes your space feel twice as big.



A handy counter and built-in oak cabinetry gives you room for all your personal items. A TV niche is the perfect place to slip in a color TV.



The spacious bath area features a shower stall, sink and mirrored medicine chest.





After a long day of fishing or sightseeing, the comfort of your sofa might be what you need. Cozy up next to the fireplace or have a family movie night in the spacious living area. (fireplace optional)



A handy counter and built-in oak cabinetry gives you room for all your personal items. A TV niche is the perfect place to slip in a color TV.



The lush decor of your master suite features a color-coordinated bedspread on your queen-sized bed, a decorative border and window treatments. A full closet with sliding mirrored doors makes your space feel twice as big.



The spacious bath area features a shower stall, sink and mirrored medicine chest.



# Interior and Exterior Features



Mirrored cabinet conceals unit's electronics control panel

LP/CO/Smoke Detectors in all units



Speaker: 5.1 surround sound speakers (Comfort Plus Pack)



Easy access to central vac connection (optional) and electrical fuse panel



In-floor steel security lock box



Pass-thru storage compartment/hidden under-floor storage makes it easy and safe to store your gear



Exterior sink with hose attachment (optional)



The optional Dirt Devil™ central vac system is easy to get to for cleaning.



An exterior shower is a Comfort Pack feature



Exterior entertainment center is a fun feature (option)



Rear entry door for optional second bath keeps sandy feet out of the living area (only available on 325BH)



Standard Comfort Pack security light provides peace of mind



Standard Comfort Pack water fill and tank flush are easy to access



Entry door with assist grab handle and triple entry steps is a Comfort Plus Pack feature



# Interior and Exterior Features



Mirrored cabinet conceals unit's electronics control panel

LP/CO/Smoke Detectors in all units



Speaker: 5.1 surround sound speakers (Comfort Plus Pack)



Easy access to central vac connection (optional) and electrical fuse panel



In-floor steel security lock box



Pass-thru storage compartment/hidden under-floor storage makes it easy and safe to store your gear



Exterior sink with hose attachment (optional)



The optional Dirt Devil™ central vac system is easy to get to for cleaning



An exterior shower is a Comfort Pack feature



Exterior entertainment center is a fun feature (option)



Rear entry door for optional second bath keeps sandy feet out of the living area (only available on 325BH)



Standard Comfort Pack security light provides peace of mind



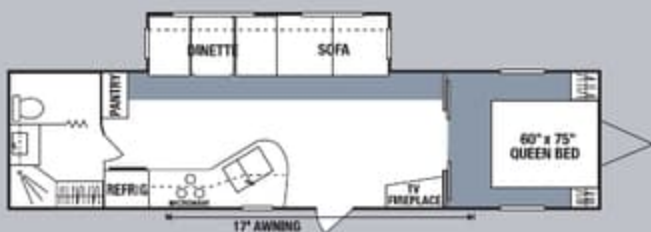
Standard Comfort Pack water fill and tank flush are easy to access



Entry door with assist grab handle and triple entry steps is a Comfort Plus Pack feature



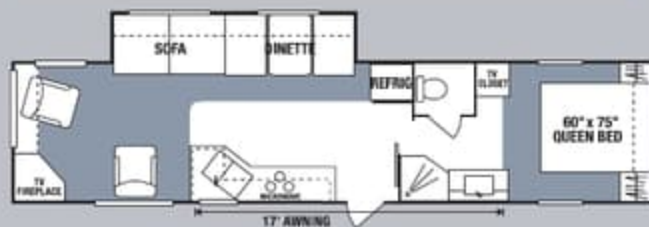
# Travel Trailer



**301RB** • UVW 7215 • Dry Hitch Wt. 955 • NCC 2785 • Length 30'9"



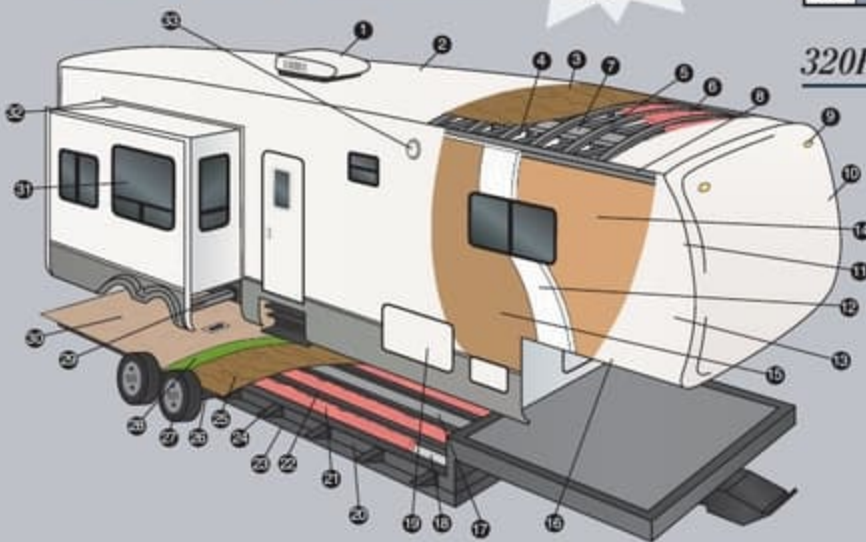
**310BH** • UVW 7426 • Dry Hitch Wt. 875 • NCC 2574 • Length 34'8"



**320RE** • UVW 7569 • Dry Hitch Wt. 825 • NCC 2431 • Length 34'8"

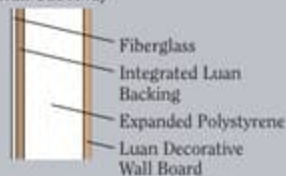
## Cut-Away Features

Total Aluminum Frame



- 1 13,500 BTU A/C
- 2 TPO Vinyl Roof
- 3 3/8" Decking (fully walk on)
- 4 Vinyl Interior Ceiling Panel
- 5 4 1/2" Aluminum Truss Rafters, 16" O.C.
- 6 R-14 Batten Insulation
- 7 Insulated Ductwork
- 8 Heavy Duty Aluminum Headers
- 9 Exterior Clearance and Brake Lights
- 10 One-Piece Fiberglass Front Cap
- 11 Aluminum Frame Front and End Walls
- 12 Expanded Polystyrene - R11
- 13 Fiberglass Exterior with Integrated Luan Backing
- 14 1/8" Luan Decorative Wall Board
- 15 1/8" Luan Wall Board
- 16 3" Aluminum Stringer
- 17 Residential Style Ducted Heat Run in Floor
- 18 Darco® Moisture Barrier
- 19 Large Capacity Pass-Thru Exterior Storage with Radius Doors Front and Side for Easy Access
- 20 Heavy Duty Tube Frame Construction
- 21 R-14 Batten Insulation
- 22 2x3 Double Welded Aluminum Floor Joists, 16" O.C.
- 23 Heated & Enclosed Underbelly
- 24 Fully Welded Outriggers
- 25 5/8" Tongue and Groove Plywood
- 26 Heavy Duty Leaf Springs
- 27 Heavy Duty Steel Wheels with Trim Rings and Center Caps
- 28 Residential Style Carpet Pad
- 29 Rack and Pinion Electric Slide with Manual Override with 2x3 Box Tube Slide Out Ram
- 30 28 oz. Residential Carpet or Linoleum
- 31 Tinted Safety Glass Windows
- 32 Triple Sealed Slide Outs
- 33 Exterior Security/Scare Lights

### Wall Cut-Away



## Because it Rains!



Here at K-Z we know a little bit about camping, actually we know a lot about camping. One thing you can count on, it will rain. We randomly test our K-Z campers from every product line in our state of the art rain booth. Our rain comes from every direction so that you can rest assured your K-Z camper will not leak. The rain may spoil your fun outside, but it won't inside.

Regal



Blue Ridge

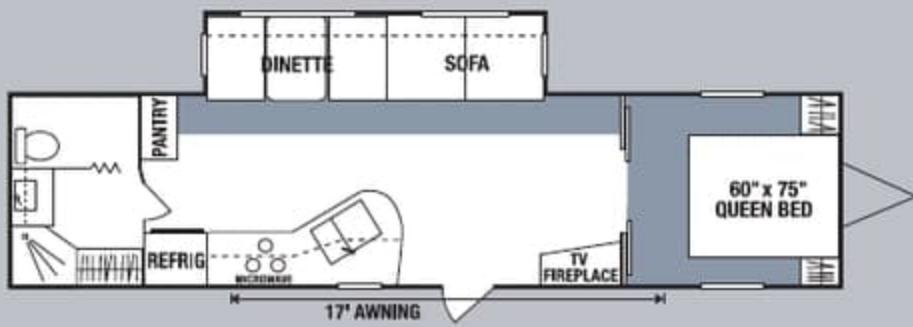


Granite





# Travel Trailer



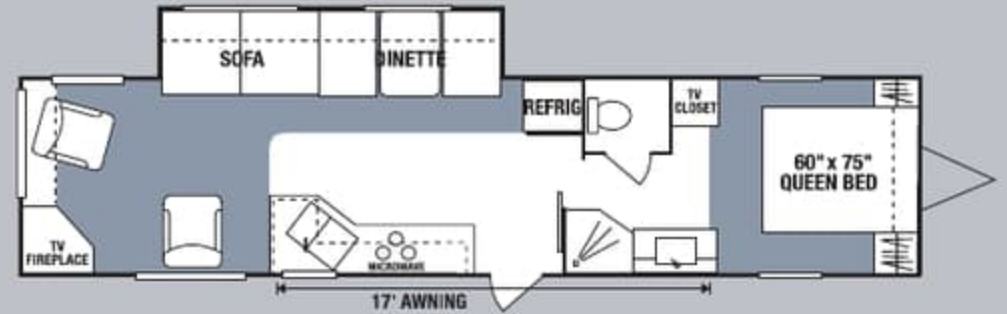
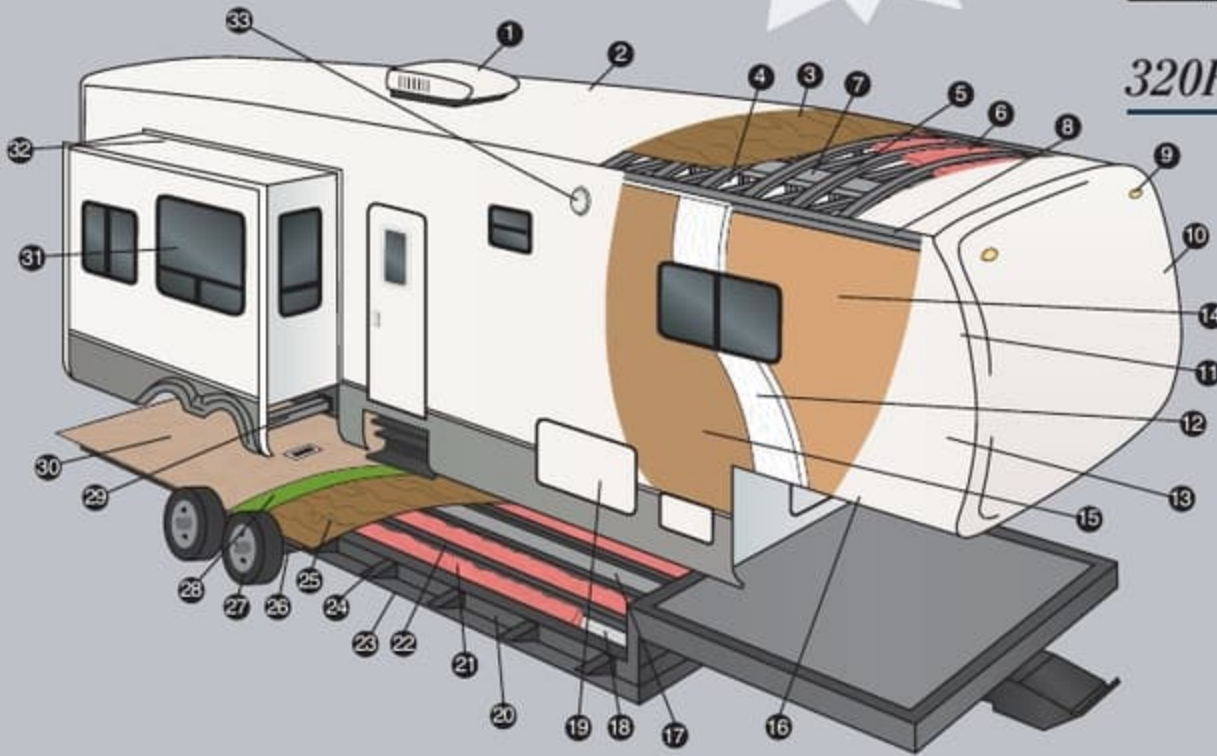
**301RB** • UVW 7215 • Dry Hitch Wt. 955 • NCC 2785 • Length 30'9"



**310BH** • UVW 7426 • Dry Hitch Wt. 875 • NCC 2574 • Length 34'8"

## Cut-Away Features

Total Aluminum Frame



**320RE** • UVW 7569 • Dry Hitch Wt. 825 • NCC 2431 • Length 34'8"

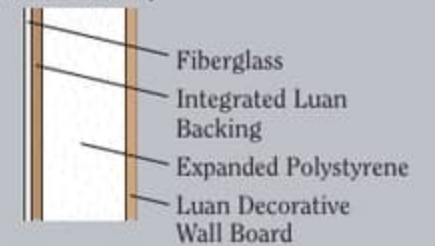
## Because it Rains!



Here at K-Z we know a little bit about camping, actually we know a lot about camping. One thing you can count on, it will rain. We randomly test our K-Z campers from every product line in our state of the art rain booth. Our rain comes from every direction so that you can rest assured your K-Z camper will not leak. The rain may spoil your fun outside, but it won't inside.

- 1 13,500 BTU A/C
- 2 TPO Vinyl Roof
- 3 3/8" Decking (fully walk on)
- 4 Vinyl Interior Ceiling Panel
- 5 4 1/2" Aluminum Truss Rafters, 16" O.C.
- 6 R-14 Batten Insulation
- 7 Insulated Ductwork
- 8 Heavy Duty Aluminum Headers
- 9 Exterior Clearance and Brake Lights
- 10 One-Piece Fiberglass Front Cap
- 11 Aluminum Frame Front and End Walls
- 12 Expanded Polystyrene - R11
- 13 Fiberglass Exterior with Integrated Luan Backing
- 14 1/8" Luan Decorative Wall Board
- 15 1/8" Luan Wall Board
- 16 3" Aluminum Stringer
- 17 Residential Style Ducted Heat Run in Floor
- 18 Darco® Moisture Barrier
- 19 Large Capacity Pass-Thru Exterior Storage with Radius Doors Front and Side for Easy Access
- 20 Heavy Duty Tube Frame Construction
- 21 R-14 Batten Insulation
- 22 2x3 Double Welded Aluminum Floor Joists, 16" O.C.
- 23 Heated & Enclosed Underbelly
- 24 Fully Welded Outriggers
- 25 5/8" Tongue and Groove Plywood
- 26 Heavy Duty Leaf Springs
- 27 Heavy Duty Steel Wheels with Trim Rings and Center Caps
- 28 Residential Style Carpet Pad
- 29 Rack and Pinion Electric Slide with Manual Override with 2x3 Box Tube Slide Out Ram
- 30 28 oz. Residential Carpet or Linoleum
- 31 Tinted Safety Glass Windows
- 32 Triple Sealed Slide Outs
- 33 Exterior Security/Scare Lights

### Wall Cut-Away



Regal



Blue Ridge



Granite

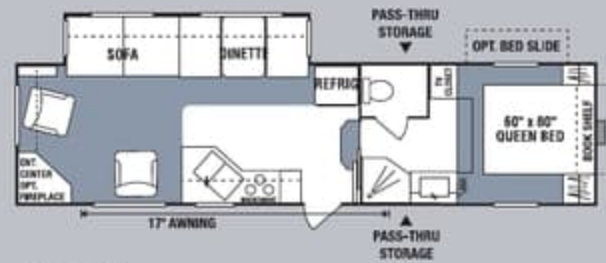




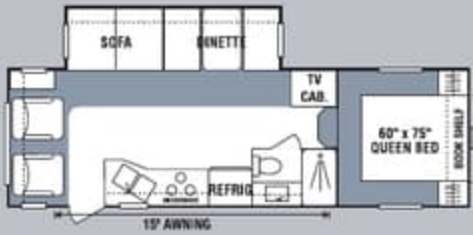
# Fifth Wheel



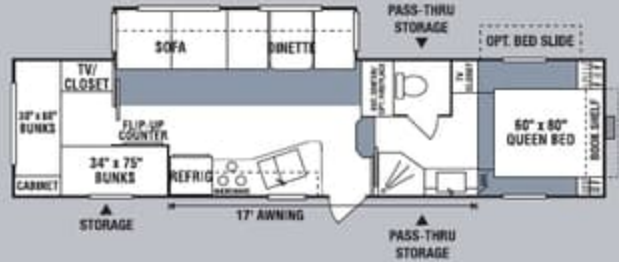
**255RK** • UVW 6830 • Dry Hitch Wt. 1590 • NCC 2170 • Length 26'3"



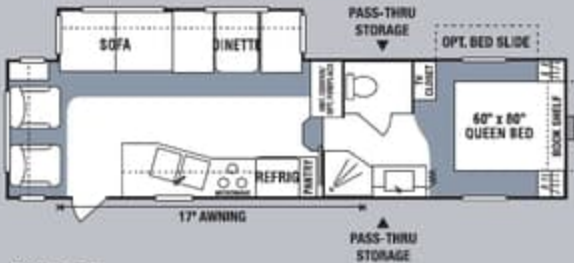
**305RE** • UVW 7940 • Dry Hitch Wt. 1610 • NCC 2060 • Length 32'11"



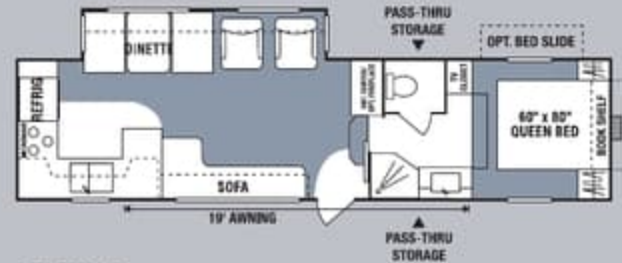
**255RL** • UVW 6900 • Dry Hitch Wt. 1370 • NCC 2100 • Length 26'3"



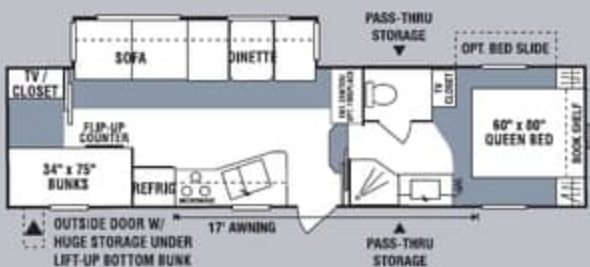
**315BH** • UVW 8290 • Dry Hitch Wt. 1650 • NCC 1710 • Length 33'5"



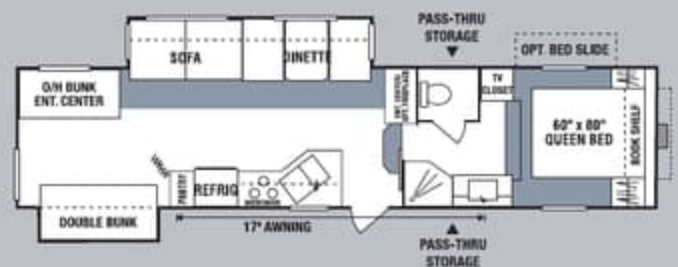
**285RL** • UVW 7880 • Dry Hitch Wt. 1480 • NCC 1940 • Length 31'1"



**315RK** • UVW 8110 • Dry Hitch Wt. 1530 • NCC 1890 • Length 32'5"



**295BH** • UVW 8000 • Dry Hitch Wt. 1680 • NCC 2000 • Length 32'4"



**325BH** • UVW 8770 • Dry Hitch Wt. 1590 • NCC 1730 • Length 33'5"

\*Optional Second Bathroom and Solid Wall Options



**305KS3** • UVW 8796 • Dry Hitch Wt. 2021 • NCC 1204 • Length 32'2"

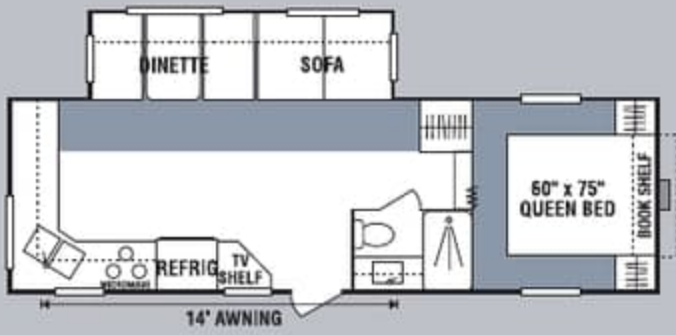
\*Optional Bedroom Slide



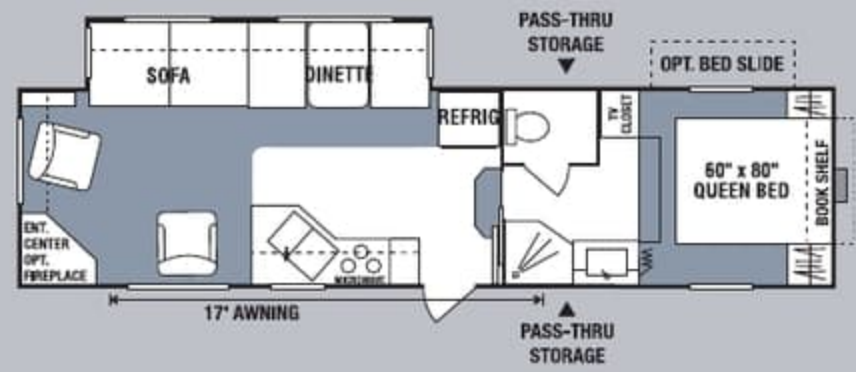
**325BH** • Optional Second Bathroom • Solid Wall Options



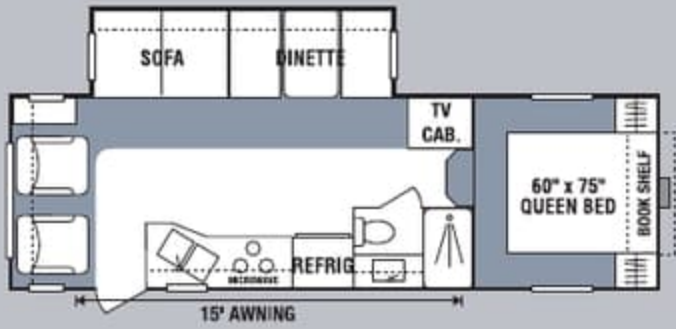
# Fifth Wheel



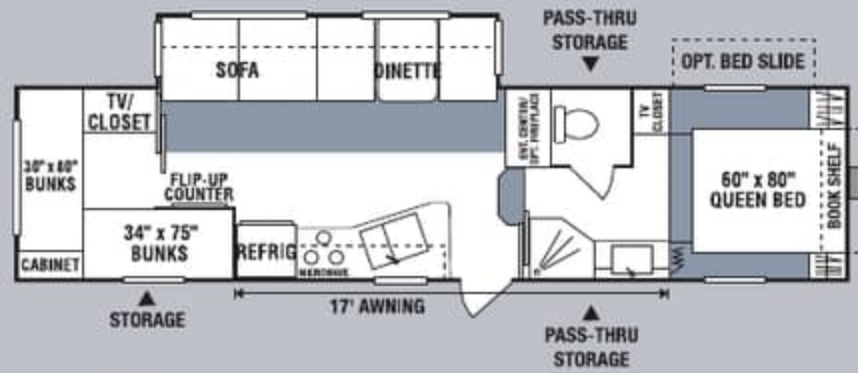
**255RK** • UVW 6830 • Dry Hitch Wt. 1590 • NCC 2170 • Length 26'3"



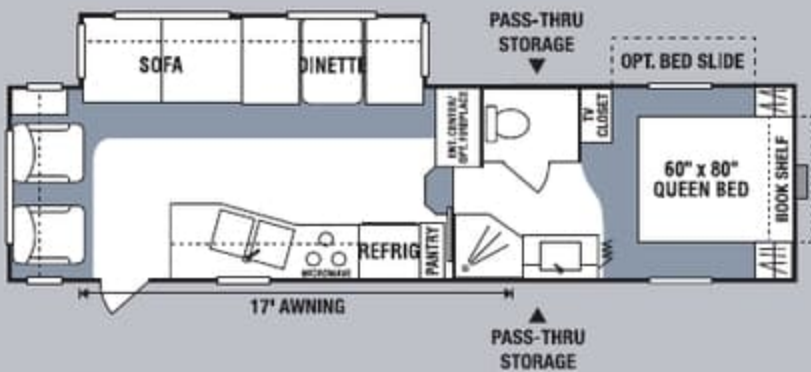
**305RE** • UVW 7940 • Dry Hitch Wt. 1610 • NCC 2060 • Length 32'11"



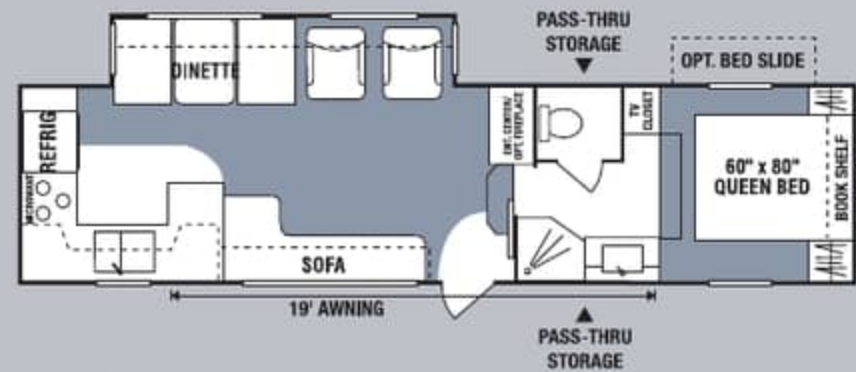
**255RL** • UVW 6900 • Dry Hitch Wt. 1370 • NCC 2100 • Length 26'3"



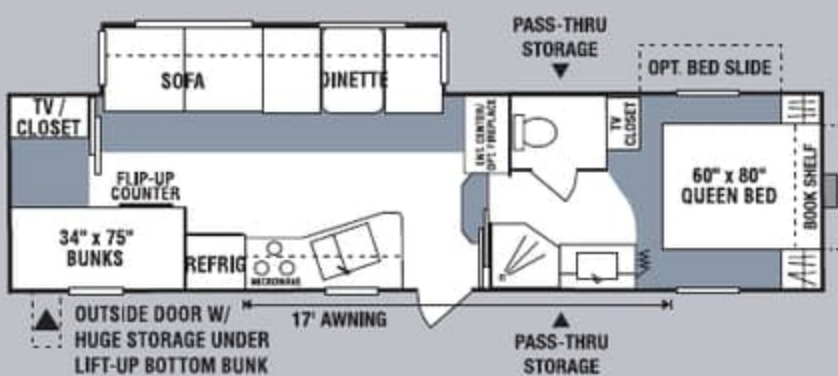
**315BH** • UVW 8290 • Dry Hitch Wt. 1650 • NCC 1710 • Length 33'5"



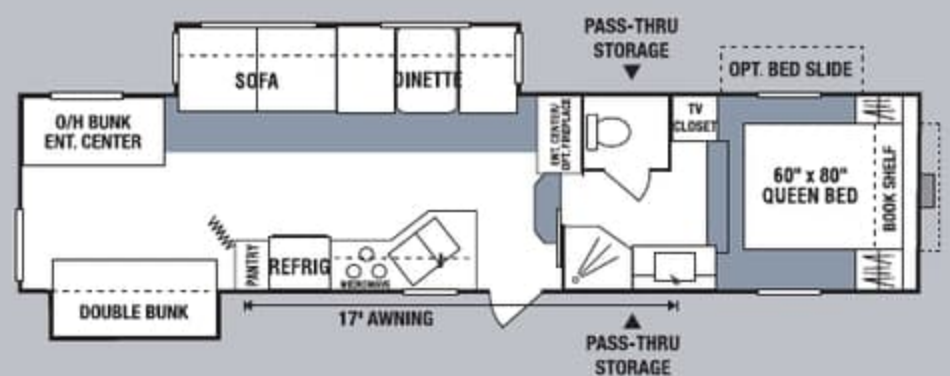
**285RL** • UVW 7880 • Dry Hitch Wt. 1480 • NCC 1940 • Length 31'1"



**315RK** • UVW 8110 • Dry Hitch Wt. 1530 • NCC 1890 • Length 32'5"

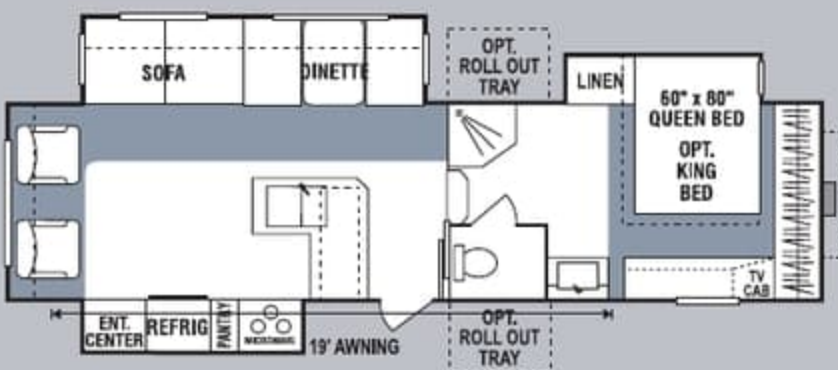


**295BH** • UVW 8000 • Dry Hitch Wt. 1680 • NCC 2000 • Length 32'4"



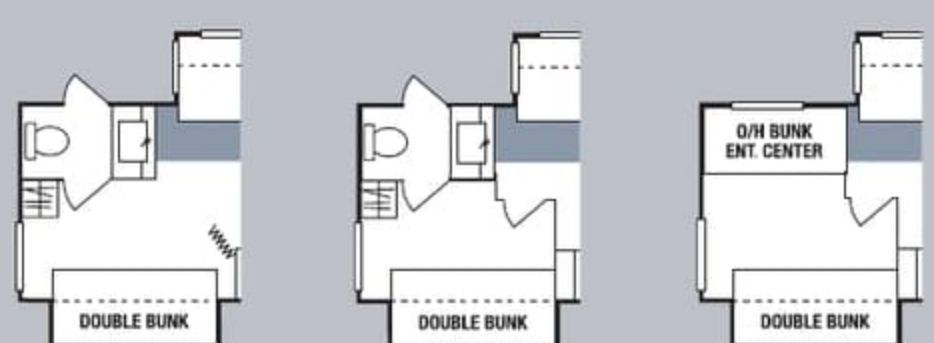
**325BH** • UVW 8770 • Dry Hitch Wt. 1590 • NCC 1730 • Length 33'5"

\*Optional Second Bathroom and Solid Wall Options



**305KS3** • UVW 8796 • Dry Hitch Wt. 2021 • NCC 1204 • Length 32'2"

\*Optional Bedroom Slide



\***325BH** • Optional Second Bathroom • Solid Wall Options



## Fifth Wheels

## Travel Trailers

	255RK	255RL	285RL	295BH	305KS3	305RE	315BH	315RK	325BH	301RB	310BH	320RE
<b>UVW</b> (Unloaded Vehicle Wt.)	6830	6900	7880	8000	8796	7940	8290	8110	8770	7215	7426	7569
<b>Dry Hitch Wt.</b>	1590	1370	1480	1680	2021	1610	1650	1530	1590	955	875	825
<b>Dry Axle Wt.</b>	5240	5530	6400	6320	6775	6330	6640	6580	7180	6260	6551	6744
<b>NCC</b> (Net Carrier Capacity)	2170	2100	1940	2000	1204	2060	1710	1890	1730	2785	2574	2431
<b>GVWR</b>	9000	9000	9820	10000	10000	10000	10000	10500	10000	10000	10000	10000
<b>Exterior Width</b>	96"	96"	96"	96"	96"	96"	96"	96"	96"	96"	82"	96"
<b>Exterior Length</b>	26'3"	26'3"	31'1"	32'4"	32'2"	32'11"	33'5"	32'5"	33'5"	30'9"	34'8"	34'8"
<b>Exterior Height</b> (with Air Conditioner)	143"	143"	149"	149"	149"	149"	149"	149"	149"	131"	131"	131"
<b>Refrigerator</b> (cu. feet)	8	8	8	8	8	8	8	8	8	8	8	8
<b>Water Heater Cap.</b> (gal. - G/E with DSI)	6	6	6	6	6	6	6	6	6	6	6	6
<b>Fresh Water Cap.</b> (gal.)	55	55	55	55	55	55	55	55	55	55	55	55
<b>Waste Water Cap.</b> (gal.)	32	32	50	50	50	50	50	50	32	50	50	50
<b>Gray Water Cap.</b> (gal.)	32	32	50	50	50	50	50	50	32	50	50	50
<b>LP Gas Cap.</b> (lbs.)	60	60	60	60	60	60	60	60	60	60	60	60
<b>Furnace BTUs</b> (1,000's)	25	25	30	30	30	30	30	30	30	30	30	30
<b>Tire Size</b>	15"	15"	15"	15"	15"	15"	15"	15"	15"	15"	15"	15"
<b>Awning</b>	14'	15'	17'	17'	17'	17'	17'	19'	17'	17'	17'	17'

## Standard Comfort Pack

- Shocks
- Stabilizer Jacks
- Triple Entry Steps
- Enclosed Pinbox (FW)
- Extended Pinbox (FW)
- Power Jacks
- Ladder
- Fiberglass Front Cap

- Slider Windows in Slide Out
- Awning
- Spare Tire
- Spare Tire Hoist (Carrier on TT)
- Laminated Fiberglass Sidewalls
- All Aluminum Framing
- Heated Tanks and Enclosed Underbelly
- Tinted Safety Windows

- Chrome Rings and Center Caps
- Exterior Shower
- Black Water Tank Flush Kit
- Chrome Bumper Cover
- Security Light
- LP/CO/Smoke Detectors
- R14 Roof Insulation
- RVIA Seal

## Standard Comfort Plus Pack

- 8 cu' Refrigerator
- 6 Gallon G/E Water Heater
- Postrest Mattress
- Fantastic Fan
- Color T.V.
- Folding Assist Grab Handle
- Over-the-Range Microwave
- Skylight over Tub
- Stove Cover

- Shower Door
- Catch All Tray (where applicable)
- Bathroom Accessories
- Pillows for Sofa
- Night Shades
- Phone Jack
- Laundry Basket
- Am-Fm CD/DVD Player with 5.1 Surround Sound Speakers

- TV Antenna with Booster
- Cathedral, Raised Panel Overhead Doors
- Cable Hook Up
- Wired for Satellite
- Fluorescent Light above Kitchen Sink with Nightlight

## Additional Options

- 15,000 BTU A/C
- 2 Bar Stools (forced on 285RL)
- CSA
- Fireplace
- Central Vac
- Hide-a-bed
- Outside Grill

- Recliners
- Table and Four Chairs
- Raised Panel Refrigerator Door
- Outside Sink
- Outside Entertainment Center
- Bedroom Slide with 60" x 80" Bed (N/A on 255s)

- Oak Cabinetry
- Stand Up Profile (285 and up)
- 16" Tires
- Solid Wall with Swing Door on 325BH
- 2nd Bath Option on 325BH
- Remote Control 5th Wheel Power Jacks

**2X2 WARRANTY** – The K-Z 2x2 Warranty is a manufacturer's warranty. Each K-Z product is warrantied to the original purchaser for twenty-four (24) months from the original date of purchase. Coverage includes appliances, components, construction and FULL structure. Our warranty is also transferable within the first two (2) years for a small processing fee. For a copy of the warranty with full terms and conditions, ask your local K-Z Dealer or visit our web site at <http://www.kz-rv.com>.

**VEHICLE LOADING** – Every effort has been made to provide the greatest number of options for the recreational owner. Each owner is responsible to select loads allowing the recreational vehicle to remain within the manufacturer's specified chassis weight limits. Do not overload the recreational vehicle.

**UNLOADED VEHICLE WEIGHT (UVW)** – The typical weight of this trailer as built at the factory. The UVW does not include cargo, LP gas, fresh water, options or dealer-installed accessories.

**GROSS VEHICLE WEIGHT RATING (GVWR)** – The maximum permissible weight of the trailer, including the UVW plus passengers, all cargo, personal items, fluids, options and dealer-installed accessories. The GVWR is equal to or greater than the sum of the UVW and the NCC.

**NET CARRYING CAPACITY (NCC)** – The maximum weight of all passengers, personal items, fresh water, food, tools, LP gas, other cargo and dealer-installed accessories\* that can be carried by the trailer. NCC is equal to or less than GVWR minus UVW.

\* The addition of options will decrease the NCC.

It is important for your safety and enjoyment that your tow vehicle be adequately sized and equipped to tow and handle the GVWR of the RV you select. Review weights and rating of your tow vehicle and consult a competent advisor for questions or advice. Whether you are new to RVing or a seasoned veteran, get a feel for the performance of your tow vehicle and the RV together before heading out on the roadways. When you tow an RV, you must drive differently than you do when driving a single vehicle. Practice hooking up, driving, backing up and braking in a safe environment or seek out professional instruction.

See specification chart above. K-Z affixes a weight label to each new RV which lists weight information for that vehicle.

**NOTE:** This information is intended as a guide only. Weights of individual vehicles are approximate. Consult your Owner's Manual for complete loading, weighing and towing instructions. All weights may vary.

**KZ DURANGO™** **RVIA**  
 K-Z • 0985 N 900 W • Shipshewana, IN 46565  
 E-Mail [kz@kz-rv.com](mailto:kz@kz-rv.com) • [www.kz-rv.com](http://www.kz-rv.com)

Dealer:

Awarded to K-Z  
 six years in a row.



Due to continual research and advances, manufacturer reserves the right to change specifications, design, price and equipment without notice, and assumes no responsibility for any error in this literature. Some items shown are not included as standard or optional equipment.



Fifth Wheels

Travel Trailers

	255RK	255RL	285RL	295BH	305KS3	305RE	315BH	315RK	325BH	301RB	310BH	320RE
UVW (Unloaded Vehicle Wt.)	6830	6900	7880	8000	8796	7940	8290	8110	8770	7215	7426	7569
Dry Hitch Wt.	1590	1370	1480	1680	2021	1610	1650	1530	1590	955	875	825
Dry Axle Wt.	5240	5530	6400	6320	6775	6330	6640	6580	7180	6260	6551	6744
NCC (Net Carrier Capacity)	2170	2100	1940	2000	1204	2060	1710	1890	1730	2785	2574	2431
GVWR	9000	9000	9820	10000	10000	10000	10000	10500	10000	10000	10000	10000
Exterior Width	96"	96"	96"	96"	96"	96"	96"	96"	96"	96"	82"	96"
Exterior Length	26'3"	26'3"	31'1"	32'4"	32'2"	32'11"	33'5"	32'5"	33'5"	30'9"	34'8"	34'8"
Exterior Height (with Air Conditioner)	143"	143"	149"	149"	149"	149"	149"	149"	149"	131"	131"	131"
Refrigerator (cu. feet)	8	8	8	8	8	8	8	8	8	8	8	8
Water Heater Cap. (gal. - G/E with DSI)	6	6	6	6	6	6	6	6	6	6	6	6
Fresh Water Cap. (gal.)	55	55	55	55	55	55	55	55	55	55	55	55
Waste Water Cap. (gal.)	32	32	50	50	50	50	50	50	32	50	50	50
Gray Water Cap. (gal.)	32	32	50	50	50	50	50	50	32	50	50	50
LP Gas Cap. (lbs.)	60	60	60	60	60	60	60	60	60	60	60	60
Furnace BTUs (1,000's)	25	25	30	30	30	30	30	30	30	30	30	30
Tire Size	15"	15"	15"	15"	15"	15"	15"	15"	15"	15"	15"	15"
Awning	14'	15'	17'	17'	17'	17'	17'	19'	17'	17'	17'	17'

Standard Comfort Pack

- Shocks
- Stabilizer Jacks
- Triple Entry Steps
- Enclosed Pinbox (FW)
- Extended Pinbox (FW)
- Power Jacks
- Ladder
- Fiberglass Front Cap
- Slider Windows in Slide Out
- Awning
- Spare Tire
- Spare Tire Hoist (Carrier on TT)
- Laminated Fiberglass Sidewalls
- All Aluminum Framing
- Heated Tanks and Enclosed Underbelly
- Tinted Safety Windows
- Chrome Rings and Center Caps
- Exterior Shower
- Black Water Tank Flush Kit
- Chrome Bumper Cover
- Security Light
- LP/CO/Smoke Detectors
- R14 Roof Insulation
- RVIA Seal

Standard Comfort Plus Pack

- 8 cu' Refrigerator
- 6 Gallon G/E Water Heater
- Postrest Mattress
- Fantastic Fan
- Color T.V.
- Folding Assist Grab Handle
- Over-the-Range Microwave
- Skylight over Tub
- Stove Cover
- Shower Door
- Catch All Tray (where applicable)
- Bathroom Accessories
- Pillows for Sofa
- Night Shades
- Phone Jack
- Laundry Basket
- Am-Fm CD/DVD Player with 5.1 Surround Sound Speakers
- TV Antenna with Booster
- Cathedral, Raised Panel Overhead Doors
- Cable Hook Up
- Wired for Satellite
- Fluorescent Light above Kitchen Sink with Nightlight

Additional Options

- 15,000 BTU A/C
- 2 Bar Stools (forced on 285RL)
- CSA
- Fireplace
- Central Vac
- Hide-a-bed
- Outside Grill
- Recliners
- Table and Four Chairs
- Raised Panel Refrigerator Door
- Outside Sink
- Outside Entertainment Center
- Bedroom Slide with 60" x 80" Bed (N/A on 255s)
- Oak Cabinetry
- Stand Up Profile (285 and up)
- 16" Tires
- Solid Wall with Swing Door on 325BH
- 2nd Bath Option on 325BH
- Remote Control 5th Wheel Power Jacks

**2X2 WARRANTY** – The K-Z 2x2 Warranty is a manufacturer's warranty. Each K-Z product is warranted to the original purchaser for twenty-four (24) months from the original date of purchase. Coverage includes appliances, components, construction and FULL structure. Our warranty is also transferable within the first two (2) years for a small processing fee. For a copy of the warranty with full terms and conditions, ask your local K-Z Dealer or visit our web site at <http://www.kz-rv.com>.

**VEHICLE LOADING** – Every effort has been made to provide the greatest number of options for the recreational owner. Each owner is responsible to select loads allowing the recreational vehicle to remain within the manufacturer's specified chassis weight limits. Do not overload the recreational vehicle.

**UNLOADED VEHICLE WEIGHT (UVW)** – The typical weight of this trailer as built at the factory. The UVW does not include cargo, LP gas, fresh water, options or dealer-installed accessories.

**GROSS VEHICLE WEIGHT RATING (GVWR)** – The maximum permissible weight of the trailer, including the UVW plus passengers, all cargo, personal items, fluids, options and dealer-installed accessories. The GVRW is equal to or greater than the sum of the UVW and the NCC.

**NET CARRYING CAPACITY (NCC)** – The maximum weight of all passengers, personal items, fresh water, food, tools, LP gas, other cargo and dealer-installed accessories\* that can be carried by the trailer. NCC is equal to or less than GVWR minus UVW.

\* The addition of options will decrease the NCC.

It is important for your safety and enjoyment that your tow vehicle be adequately sized and equipped to tow and handle the GVWR of the RV you select. Review weights and rating of your tow vehicle and consult a competent advisor for questions or advice. Whether you are new to RVing or a seasoned veteran, get a feel for the performance of your tow vehicle and the RV together before heading out on the roadways. When you tow an RV, you must drive differently than you do when driving a single vehicle. Practice hooking up, driving, backing up and braking in a safe environment or seek out professional instruction.

See specification chart above. K-Z affixes a weight label to each new RV which lists weight information for that vehicle.

**NOTE:** This information is intended as a guide only. Weights of individual vehicles are approximate. Consult your Owner's Manual for complete loading, weighing and towing instructions. All weights may vary.

**KZ DURANGO™** **RVIA**  
 K-Z • 0985 N 900 W • Shipshewana, IN 46565  
 E-Mail [kz@kz-rv.com](mailto:kz@kz-rv.com) • [www.kz-rv.com](http://www.kz-rv.com)

Awarded to K-Z  
 six years in a row.

