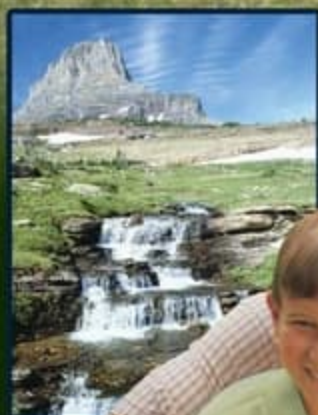




OUTDOORSMEN™

 *Canadian Edition*

Travel Trailers and Fifth Wheels



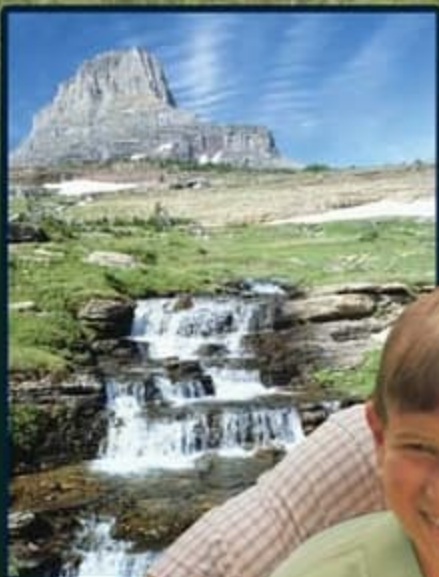
*“Together”...
Discover More!*



OUTDOORSMEN™

 *Canadian Edition*

Travel Trailers and Fifth Wheels



*“Together”...
Discover More!*



All the touches of home, from the raised panel oak cabinetry to the sofa pillows, have been added for your enjoyment.

OUTDOORSMEN™

Have you ever wished you could just take off and hit the road in search of adventure? Now you can, anytime you want. In your Outdoorsmen travel trailer or fifth wheel, you can pack up and head out for adventure on a moments notice. However you choose to discover your own new adventure, you'll never forget a family vacation spent in your Outdoorsmen by K-Z, your personal home away from home.

Calypso



Raisin



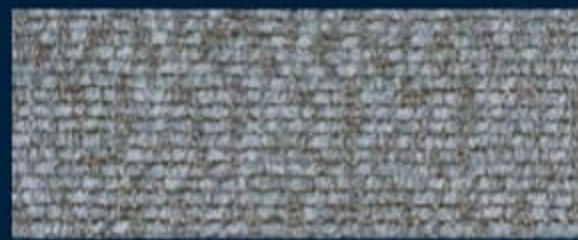
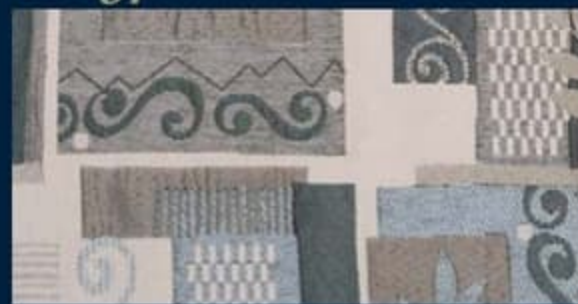


All the touches of home, from the raised panel oak cabinetry to the sofa pillows, have been added for your enjoyment.

OUTDOORSMENTM

Have you ever wished you could just take off and hit the road in search of adventure? Now you can, anytime you want. In your Outdoorsmen travel trailer or fifth wheel, you can pack up and head out for adventure on a moments notice. However you choose to discover your own new adventure, you'll never forget a family vacation spent in your Outdoorsmen by K-Z, your personal home away from home.

Calypso



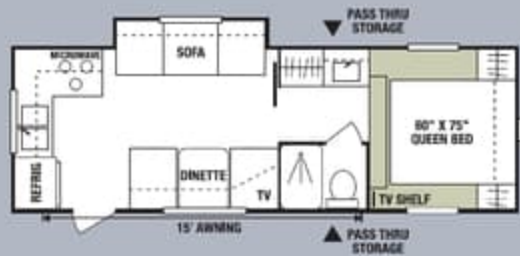
Raisin





2901P-F shown with Calypso décor

Fifth Wheels



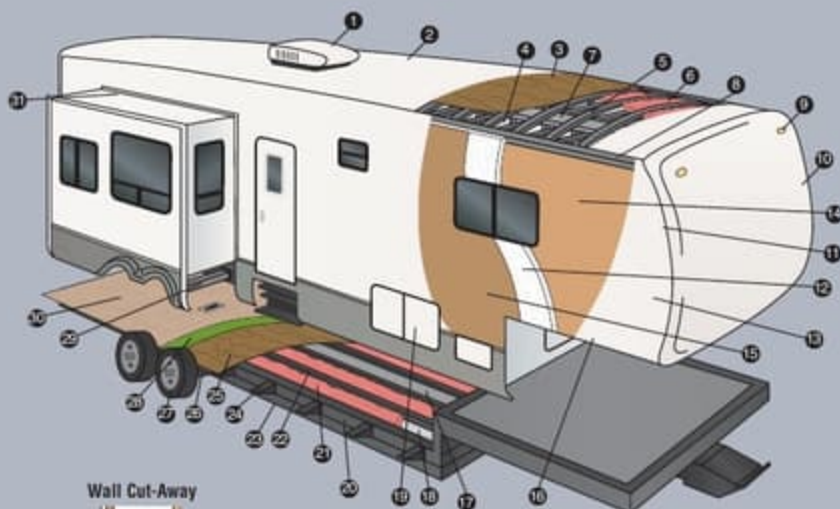
2352P-F • UVW 5530 • Dry Hitch Wt. 900 • NCC 1470 • Length 24'9"



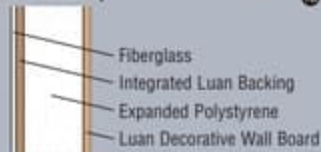
2353P-F • UVW 5460 • Dry Hitch Wt. 1100 • NCC 1540 • Length 25'1"



2453P-F • UVW 6090 • Dry Hitch Wt. 1400 • NCC 1910 • Length 26'10"



Wall Cut-Away

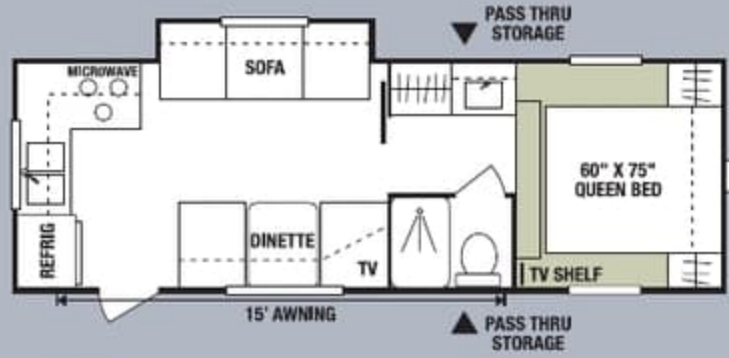


- 1 13,500 BTU A/C
- 2 One-Piece Seamless Rubber Roof
- 3 3/8" Decking (fully walk on)
- 4 Vinyl Interior Ceiling Panel
- 5 4 1/2" Aluminum Truss Rafter, 16" O.C.
- 6 R-7 Batten Insulation
- 7 Insulated Ductwork
- 8 Heavy Duty Aluminum Headers
- 9 Exterior Clearance and Brake Lights
- 10 One-Piece Fiberglass Front Cap
- 11 Aluminum Frame Front and End Walls
- 12 Expanded Polystyrene
- 13 Fiberglass Exterior with Integrated Luan Backing
- 14 1/8" Luan Decorative Wall Board
- 15 1/8" Luan Wall Board
- 16 3" Aluminum Stringer
- 17 Residential Style Ducted Heat Run in Floor
- 18 Darco® Moisture Barrier
- 19 Large Capacity Pass-Thru Exterior Storage with Radius Doors Front and Side for Easy Access
- 20 Heavy Duty Tube Frame Construction
- 21 R-7 Batten Insulation
- 22 2x3 Double Welded Aluminum Floor Joists, 16" O.C.
- 23 Heated & Enclosed Underbelly
- 24 Fully Welded Outriggers
- 25 5/8" Tongue and Groove Plywood
- 26 Heavy Duty Leaf Springs
- 27 Heavy Duty Steel Wheels with Trim Rings and Center Caps
- 28 Residential Style Carpet Pad
- 29 Rack and Pinion Electric Slide with Manual Override with 2x3 Box Tube Slide Out Ram
- 30 28 oz. Residential Carpet or Linoleum
- 31 Triple Sealed Slide Outs

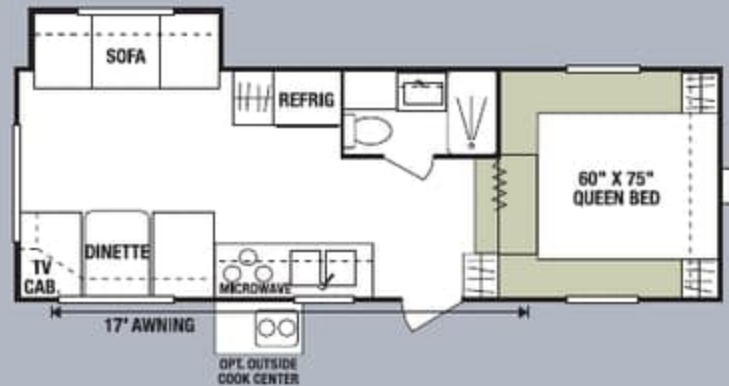


2901P-F shown with Calypso décor

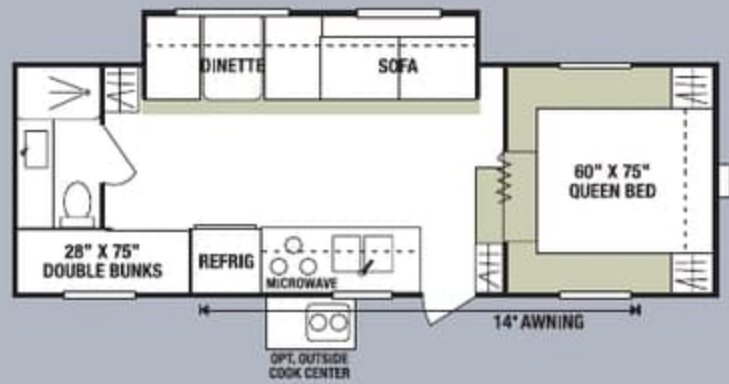
Fifth Wheels



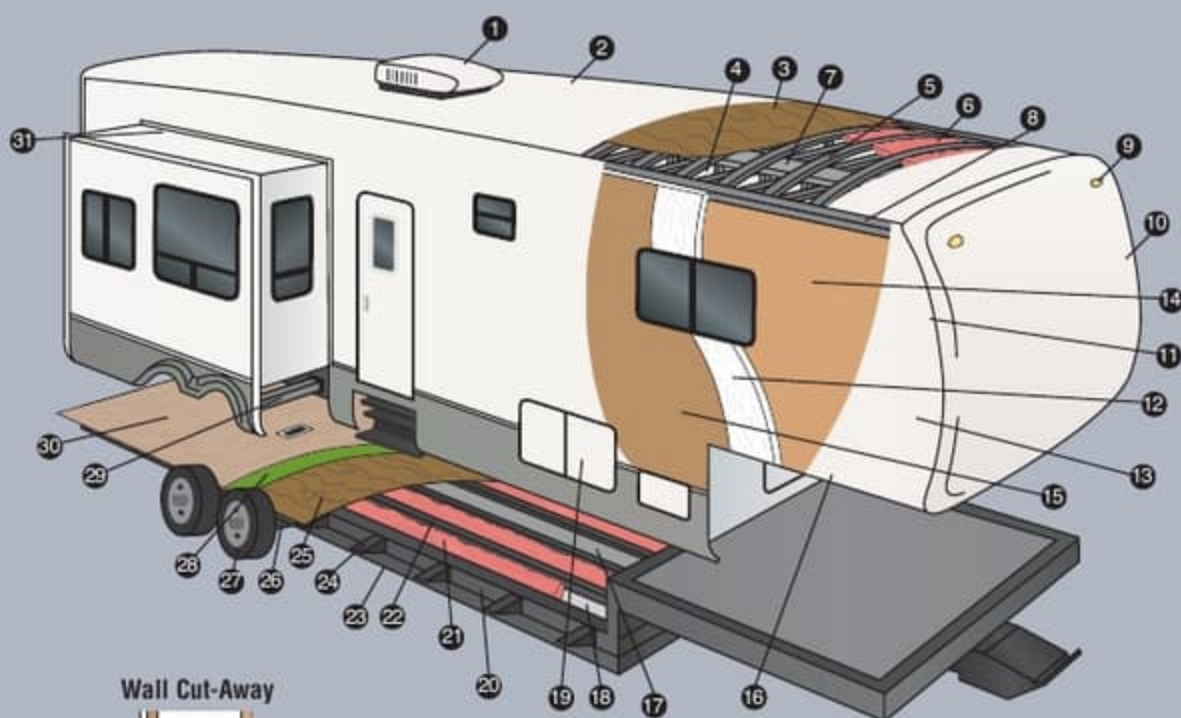
2352P-F • UVW 5530 • Dry Hitch Wt. 900 • NCC 1470 • Length 24'9"



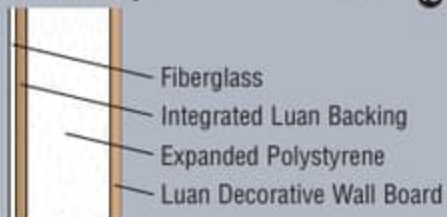
2353P-F • UVW 5460 • Dry Hitch Wt. 1100 • NCC 1540 • Length 25'1"



2453P-F • UVW 6090 • Dry Hitch Wt. 1400 • NCC 1910 • Length 26'10"



Wall Cut-Away

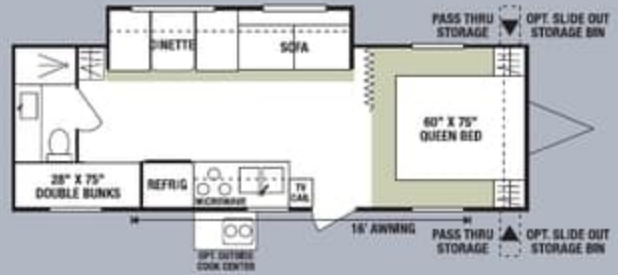


- 1 13,500 BTU A/C
- 2 One-Piece Seamless Rubber Roof
- 3 3/8" Decking (fully walk on)
- 4 Vinyl Interior Ceiling Panel
- 5 4 1/2" Aluminum Truss Rafters, 16" O.C.
- 6 R-7 Batten Insulation
- 7 Insulated Ductwork
- 8 Heavy Duty Aluminum Headers
- 9 Exterior Clearance and Brake Lights
- 10 One-Piece Fiberglass Front Cap
- 11 Aluminum Frame Front and End Walls
- 12 Expanded Polystyrene
- 13 Fiberglass Exterior with Integrated Luan Backing
- 14 1/8" Luan Decorative Wall Board
- 15 1/8" Luan Wall Board
- 16 3" Aluminum Stringer
- 17 Residential Style Ducted Heat Run in Floor
- 18 Darco® Moisture Barrier
- 19 Large Capacity Pass-Thru Exterior Storage with Radius Doors Front and Side for Easy Access
- 20 Heavy Duty Tube Frame Construction
- 21 R-7 Batten Insulation
- 22 2x3 Double Welded Aluminum Floor Joists, 16" O.C.
- 23 Heated & Enclosed Underbelly
- 24 Fully Welded Outriggers
- 25 5/8" Tongue and Groove Plywood
- 26 Heavy Duty Leaf Springs
- 27 Heavy Duty Steel Wheels with Trim Rings and Center Caps
- 28 Residential Style Carpet Pad
- 29 Rack and Pinion Electric Slide with Manual Override with 2x3 Box Tube Slide Out Ram
- 30 28 oz. Residential Carpet or Linoleum
- 31 Triple Sealed Slide Outs

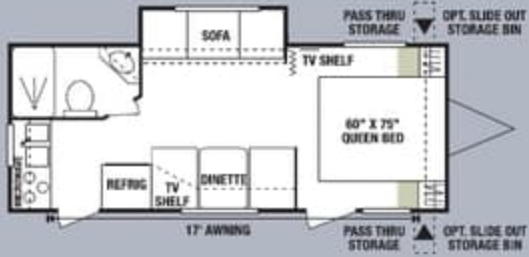
Travel Trailers



2205QS-F • UVW 4160 • Dry Hitch Wt. 410 • NCC 1840 • Length 23'



2802P-F • UVW 5350 • Dry Hitch Wt. 570 • NCC 1650 • Length 29'



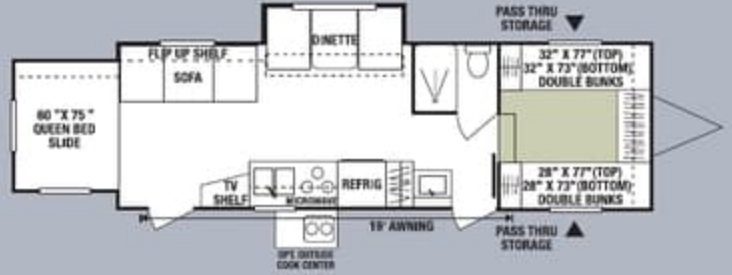
2303P-F • UVW 4670 • Dry Hitch Wt. 490 • NCC 2330 • Length 25'2"



2803P-F • UVW 5260 • Dry Hitch Wt. 860 • NCC 1740 • Length 29'



2405PQS-F • UVW 5300 • Dry Hitch Wt. 480 • NCC 1700 • Length 25'5"



2809PQS-F • UVW 5540 • Dry Hitch Wt. 560 • NCC 1460 • Length 28'7"

*Optional Bedroom with Side Ramp

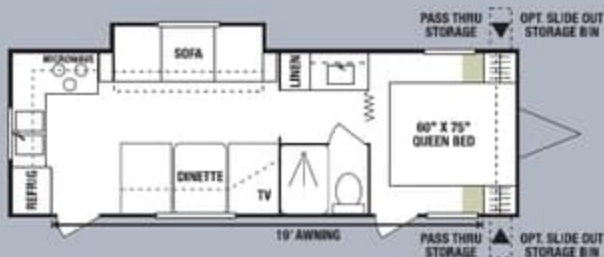


2505QSS-F • UVW 5380 • Dry Hitch Wt. 620 • NCC 1620 • Length 26'3"

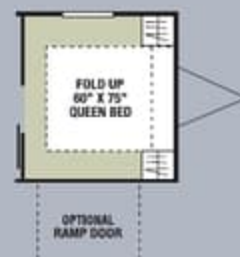
*Optional Bedroom with Side Ramp



2901P-F • UVW 5570 • Dry Hitch Wt. 730 • NCC 1430 • Length 30'11"



2605P-F • UVW 5080 • Dry Hitch Wt. 490 • NCC 1920 • Length 27'4"



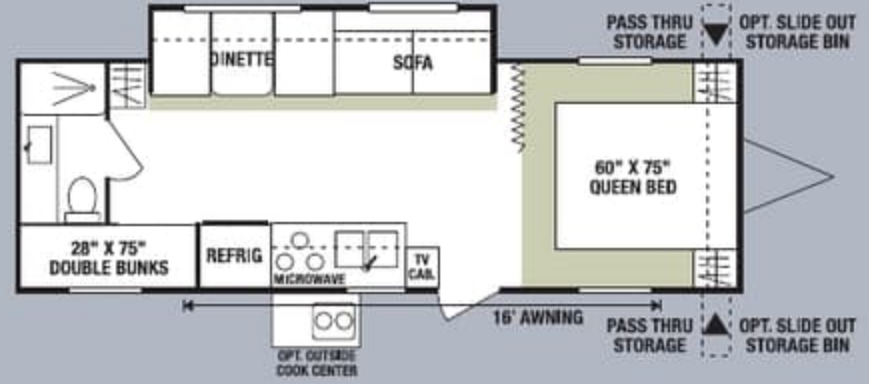
***Optional Bedroom with Side Ramp**

available on 2505QSS-F and 2809PQS-F

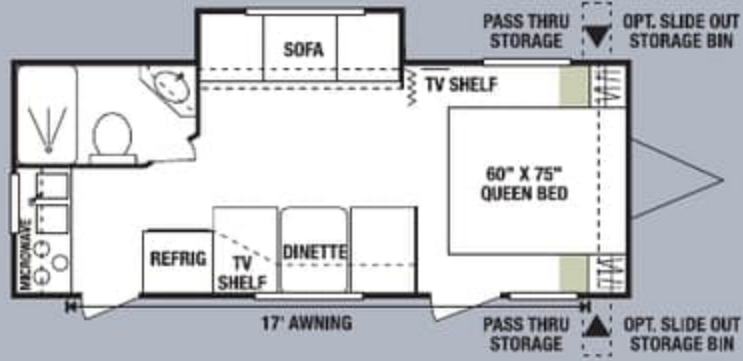
Travel Trailers



2205QS-F • UVW 4160 • Dry Hitch Wt. 410 • NCC 1840 • Length 23'



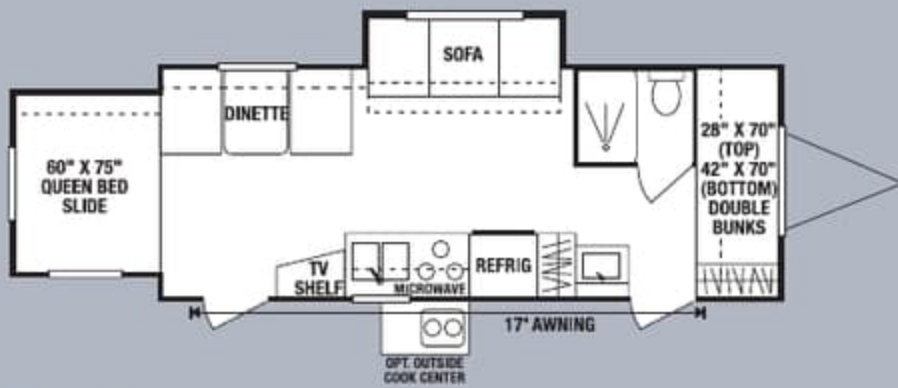
2802P-F • UVW 5350 • Dry Hitch Wt. 570 • NCC 1650 • Length 29'



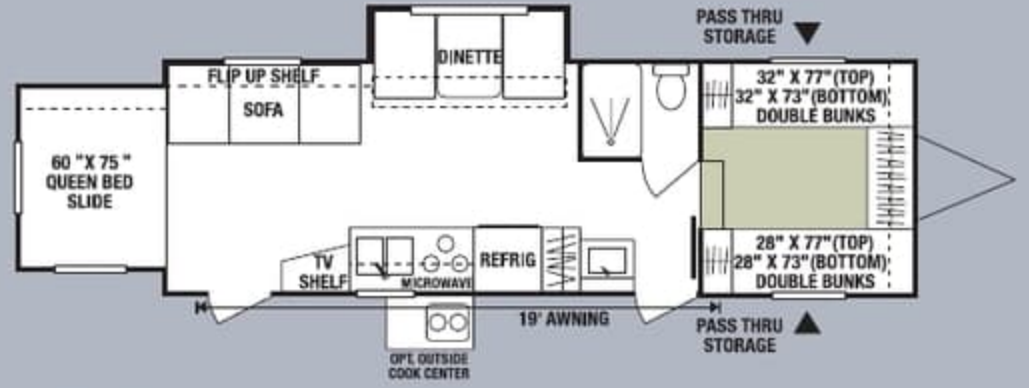
2303P-F • UVW 4670 • Dry Hitch Wt. 490 • NCC 2330 • Length 25'2"



2803P-F • UVW 5260 • Dry Hitch Wt. 860 • NCC 1740 • Length 29'



2405PQS-F • UVW 5300 • Dry Hitch Wt. 480 • NCC 1700 • Length 25'5"



2809PQS-F • UVW 5540 • Dry Hitch Wt. 560 • NCC 1460 • Length 28'7"

*Optional Bedroom with Side Ramp

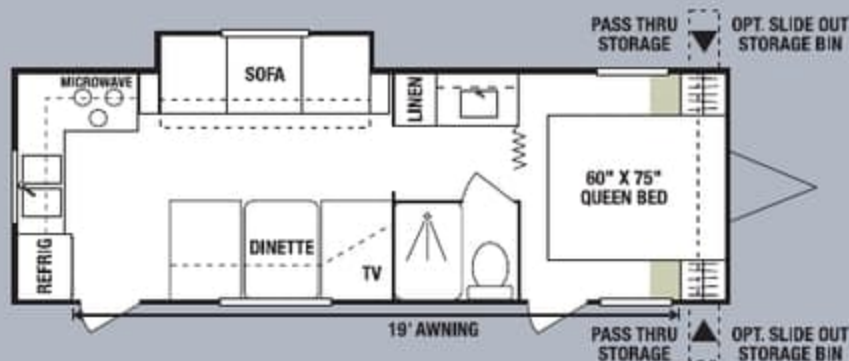


2505QSS-F • UVW 5380 • Dry Hitch Wt. 620 • NCC 1620 • Length 26'3"

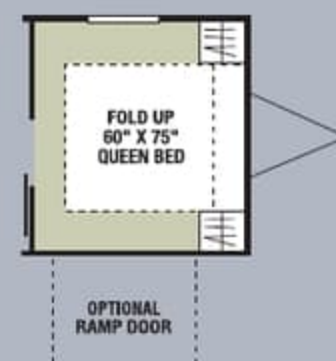
*Optional Bedroom with Side Ramp



2901P-F • UVW 5570 • Dry Hitch Wt. 730 • NCC 1430 • Length 30'11"



2605P-F • UVW 5080 • Dry Hitch Wt. 490 • NCC 1920 • Length 27'4"



***Optional Bedroom with Side Ramp**

available on 2505QSS-F and 2809PQS-F



Bask in sunlight pouring in through the skylight. This bath is equipped with many accessories.

There's plenty of storage room in this dinette. Sit a spell and enjoy the wide open vista from your dining area window.



You can cook up a feast for family and friends in this decked out kitchen. This modern fifth wheel features a 6-cubic foot fridge, microwave, stove and oven.



Campers never had it so good. A queen-sized bed, TV shelf, and light blocking shades, so you can get your beauty sleep.



Bask in sunlight pouring in through the skylight. This bath is equipped with many accessories.

There's plenty of storage room in this dinette. Sit a spell and enjoy the wide open vista from your dining area window.



You can cook up a feast for family and friends in this decked out kitchen. This modern fifth wheel features a 6-cubic foot fridge, microwave, stove and oven.



Campers never had it so good. A queen-sized bed, TV shelf, and light blocking shades, so you can get your beauty sleep.

Travel Trailers

Fifth Wheels

	2205QS-F	2303P-F	2405PQS-F	2505QSS-F	2605P-F	2802P-F	2803P-F	2809PQS-F	2901P-F	2352P-F	2353P-F	2453P-F
UVW (Unloaded Vehicle Wt.)	4160	4670	5300	5380	5080	5350	5260	5540	5570	5530	5460	6090
Dry Hitch Wt.	410	490	480	620	490	570	860	560	730	900	1100	1400
Dry Axle Wt.	3750	4180	4820	4760	4590	4780	4400	4980	4840	4630	4360	4690
NCC (Net Carrier Capacity)	1840	2330	1700	1620	1920	1650	1740	1460	1430	1470	1540	1910
GVWR	6000	7000	7000	7000	7000	7000	7000	7000	7000	7000	7000	8000
Interior Height	78"	78"	78"	78"	78"	78"	78"	78"	78"	82"	82"	82"
Exterior Height (w/ A/C)	121"	121"	121"	121"	121"	121"	121"	121"	121"	132"	132"	132"
Exterior Width	96"	96"	96"	96"	96"	96"	96"	96"	96"	96"	96"	96"
Exterior Length	23'	25'2"	25'5"	26'3"	27'4"	29'	29'	28'7"	30'11"	24'9"	25'1"	26'10"
Refrigerator	6	6	6	6	6	6	6	6	6	6	6	6
Water Heater Cap. (gal.)	6	6	6	6	6	6	6	6	6	6	6	6
Fresh Water Cap. (gal.)	40	40	40	40	40	40	40	40	40	40	40	40
Waste Water Cap. (gal.)	32	32	32	32	32	32	32	32	32	32	32	32
Gray Water Cap. (gal.)	32	32	32	32	32	32	32	32	32	32	32	32
LPG Gas Cap. (gal.)	30	30	30	30	30	30	30	30	30	30	30	30
Furnace BTU's (1000's)	20	20	20	20	20	25	25	25	25	20	20	25
Tire Size	14"	14"	14"	14"	14"	14"	14"	14"	14"	15"	15"	15"
Awning Size	16'	17'	17'	16'	19'	17'	20'	19'	16'	15'	17'	14'

Standard Living Package

- 13,500 BTU Ducted A/C
- Awning
- Microwave *
- 6 cu' Refrigerator
- Oven
- Stove Cover
- AM-FM Stereo w/CD Player
- Acrylic Sink w/High Rise Faucet
- Outside Cooktop or Outside Grill *
- Double Step
- TV Antenna w/Booster
- Cable Hook Up
- TV Shelf in Bedroom
- Night Shades *

- 2 Sink Covers
- Deluxe Roller Drawer Guides
- 30# Gas Bottles
- Exterior Shower
- Skylight Over Tub & Tub Surround
- Pillows for Sofa *
- Brushed Nickel Faucets
- Brushed Nickel Cabinet Hardware
- Fluorescent Light Over Kitchen Sink
- Bathroom Accessories
- Porch Light on ODS & Hitch Light
- Chrome Rings & Caps
- Raised Oak Mortise & Tenon Overhead Cabinet Doors

- 40 gal. Fresh Water Tank
- Smoke Detector
- LP Detector
- CO Detector
- 6 gal. Gas/Electric DSI Water Heater w/Winter By-Pass Kit
- Straight Axles
- Shower Door
- Heated & Enclosed Underbelly

* Where applicable and codes allow.
Note: Some standard features may be cancelled or altered at dealer's request.

Optional Equipment

- Fantastic Vent
- Foot Flush Toilet
- Assist Grab Handle
- Battery and Box
- Tinted/Safety Windows
- Spare Tire

- Spare Tire Carrier
- Spare Tire Cover
- 15" Tires
- Chrome Bumper Cover
- Side Ramp Door (2505QSS and 2809PQS)

- Power Jack
- Stabilizer Jacks (2 or 4)
- Oak Cabinetry
- CSA (Canadian required)
- Power QS
- Black Tank Flush

2X2 WARRANTY – The K-Z 2x2 Warranty is a manufacturer's warranty. Each K-Z product is warranted to the original purchaser for twenty-four (24) months from the original date of purchase. Coverage includes appliances, components, construction and FULL structure. Our warranty is also transferable within the first two (2) years for a small processing fee. For a copy of the warranty with full terms and conditions, ask your local K-Z Dealer or visit our web site at <http://www.kz-rv.com>.

VEHICLE LOADING – Every effort has been made to provide the greatest number of options for the recreational owner. Each owner is responsible to select loads allowing the recreational vehicle to remain within the manufacturer's specified chassis weight limits. Do not overload the recreational vehicle.

UNLOADED VEHICLE WEIGHT (UVW) – The typical weight of this trailer as built at the factory. The UVW does not include cargo, LP gas, fresh water, options or dealer-installed accessories.

GROSS VEHICLE WEIGHT RATING (GVWR) – The maximum permissible weight of the trailer, including the UVW plus passengers, all cargo, personal items, fluids, options and dealer-installed accessories. The GVWR is equal to or greater than the sum of the UVW and the NCC.

NET CARRYING CAPACITY (NCC) – The maximum weight of all passengers, personal items, fresh water, food, tools, LP gas, other cargo and dealer-installed accessories* that can be carried by the trailer. NCC is equal to or less than GVWR minus UVW.

* The addition of options will decrease the NCC.

It is important for your safety and enjoyment that your tow vehicle be adequately sized and equipped to tow and handle the GVWR of the RV you select. Review weights and rating of your tow vehicle and consult a competent advisor for questions or advice. Whether you are new to RVing or a seasoned veteran, get a feel for the performance of your tow vehicle and the RV together before heading out on the roadways. When you tow an RV, you must drive differently than you do when driving a single vehicle. Practice hooking up, driving, backing up and braking in a safe environment or seek out professional instruction.

See specification chart above. K-Z affixes a weight label to each new RV which lists weight information for that vehicle.

NOTE: This information is intended as a guide only. Weights of individual vehicles are approximate. Consult your Owner's Manual for complete loading, weighing and towing instructions. All weights may vary.

Awarded to K-Z
Six Years in a Row!



Dealer:



K-Z • 9270 West U.S. 20 • Shipshewana, IN 46565
E-Mail kz@kz-rv.com • www.kz-rv.com



Travel Trailers

Fifth Wheels

	2205QS-F	2303P-F	2405PQS-F	2505QSS-F	2605P-F	2802P-F	2803P-F	2809PQS-F	2901P-F	2352P-F	2353P-F	2453P-F
UVW (Unloaded Vehicle Wt.)	4160	4670	5300	5380	5080	5350	5260	5540	5570	5530	5460	6090
Dry Hitch Wt.	410	490	480	620	490	570	860	560	730	900	1100	1400
Dry Axle Wt.	3750	4180	4820	4760	4590	4780	4400	4980	4840	4630	4360	4690
NCC (Net Carrier Capacity)	1840	2330	1700	1620	1920	1650	1740	1460	1430	1470	1540	1910
GVWR	6000	7000	7000	7000	7000	7000	7000	7000	7000	7000	7000	8000
Interior Height	78"	78"	78"	78"	78"	78"	78"	78"	78"	82"	82"	82"
Exterior Height (w/ A/C)	121"	121"	121"	121"	121"	121"	121"	121"	121"	132"	132"	132"
Exterior Width	96"	96"	96"	96"	96"	96"	96"	96"	96"	96"	96"	96"
Exterior Length	23'	25'2"	25'5"	26'3"	27'4"	29'	29'	28'7"	30'11"	24'9"	25'1"	26'10"
Refrigerator	6	6	6	6	6	6	6	6	6	6	6	6
Water Heater Cap. (gal.)	6	6	6	6	6	6	6	6	6	6	6	6
Fresh Water Cap. (gal.)	40	40	40	40	40	40	40	40	40	40	40	40
Waste Water Cap. (gal.)	32	32	32	32	32	32	32	32	32	32	32	32
Gray Water Cap. (gal.)	32	32	32	32	32	32	32	32	32	32	32	32
LPG Gas Cap. (gal.)	30	30	30	30	30	30	30	30	30	30	30	30
Furnace BTU's (1000's)	20	20	20	20	20	25	25	25	25	20	20	25
Tire Size	14"	14"	14"	14"	14"	14"	14"	14"	14"	15"	15"	15"
Awning Size	16'	17'	17'	16'	19'	17'	20'	19'	16'	15'	17'	14'

Standard Living Package

- 13,500 BTU Ducted A/C
- Awning
- Microwave *
- 6 cu' Refrigerator
- Oven
- Stove Cover
- AM-FM Stereo w/CD Player
- Acrylic Sink w/High Rise Faucet
- Outside Cooktop or Outside Grill *
- Double Step
- TV Antenna w/Booster
- Cable Hook Up
- TV Shelf in Bedroom
- Night Shades *
- 2 Sink Covers
- Deluxe Roller Drawer Guides
- 30# Gas Bottles
- Exterior Shower
- Skylight Over Tub & Tub Surround
- Pillows for Sofa *
- Brushed Nickel Faucets
- Brushed Nickel Cabinet Hardware
- Fluorescent Light Over Kitchen Sink
- Bathroom Accessories
- Porch Light on ODS & Hitch Light
- Chrome Rings & Caps
- Raised Oak Mortise & Tenon Overhead Cabinet Doors
- 40 gal. Fresh Water Tank
- Smoke Detector
- LP Detector
- CO Detector
- 6 gal. Gas/Electric DSI Water Heater w/Winter By-Pass Kit
- Straight Axles
- Shower Door
- Heated & Enclosed Underbelly

* Where applicable and codes allow. Note: Some standard features may be cancelled or altered at dealer's request.

Optional Equipment

- Fantastic Vent
- Foot Flush Toilet
- Assist Grab Handle
- Battery and Box
- Tinted/Safety Windows
- Spare Tire
- Spare Tire Carrier
- Spare Tire Cover
- 15" Tires
- Chrome Bumper Cover
- Side Ramp Door (2505QSS and 2809PQS)
- Power Jack
- Stabilizer Jacks (2 or 4)
- Oak Cabinetry
- CSA (Canadian required)
- Power QS
- Black Tank Flush

2X2 WARRANTY – The K-Z 2x2 Warranty is a manufacturer's warranty. Each K-Z product is warranted to the original purchaser for twenty-four (24) months from the original date of purchase. Coverage includes appliances, components, construction and FULL structure. Our warranty is also transferable within the first two (2) years for a small processing fee. For a copy of the warranty with full terms and conditions, ask your local K-Z Dealer or visit our web site at <http://www.kz-rv.com>.

VEHICLE LOADING – Every effort has been made to provide the greatest number of options for the recreational owner. Each owner is responsible to select loads allowing the recreational vehicle to remain within the manufacturer's specified chassis weight limits. Do not overload the recreational vehicle.

UNLOADED VEHICLE WEIGHT (UVW) – The typical weight of this trailer as built at the factory. The UVW does not include cargo, LP gas, fresh water, options or dealer-installed accessories.

GROSS VEHICLE WEIGHT RATING (GVWR) – The maximum permissible weight of the trailer, including the UVW plus passengers, all cargo, personal items, fluids, options and dealer-installed accessories. The GVRW is equal to or greater than the sum of the UVW and the NCC.

NET CARRYING CAPACITY (NCC) – The maximum weight of all passengers, personal items, fresh water, food, tools, LP gas, other cargo and dealer-installed accessories* that can be carried by the trailer. NCC is equal to or less than GVWR minus UVW.

* The addition of options will decrease the NCC.

It is important for your safety and enjoyment that your tow vehicle be adequately sized and equipped to tow and handle the GVWR of the RV you select. Review weights and rating of your tow vehicle and consult a competent advisor for questions or advice. Whether you are new to RVing or a seasoned veteran, get a feel for the performance of your tow vehicle and the RV together before heading out on the roadways. When you tow an RV, you must drive differently than you do when driving a single vehicle. Practice hooking up, driving, backing up and braking in a safe environment or seek out professional instruction.

See specification chart above. K-Z affixes a weight label to each new RV which lists weight information for that vehicle.

NOTE: This information is intended as a guide only. Weights of individual vehicles are approximate. Consult your Owner's Manual for complete loading, weighing and towing instructions. All weights may vary.

Awarded to K-Z Six Years in a Row!



Dealer:

OUTDOORSMENTM
by K-Z

K-Z • 9270 West U.S. 20 • Shipshewana, IN 46565
E-Mail kz@kz-rv.com • www.kz-rv.com