



MONACO®

DRIVING YOUR DREAM.

DIPLOMAT®

 | 07





MONACO®

DRIVING YOUR DREAM.

DIPLOMAT®

 | 07





DIPLOMAT™

FIRST CLASS ALL THE WAY.

If you're going to see the world, you might as well do it in grand style. Welcome to the 2007 Diplomat. This perennial favorite offers first-class accommodations all the way — including stunning new decor packages and luxuries like a home theater system and a 32" flatscreen LCD TV on the 40SKQ shown here. You'll also love the comfort of legless dinette tables and a new full-wall slide on the 40SFT.

GALLEY. High style meets low fuss in the galley with its solid surface countertops, ceramic tile backsplash with Corian® molding, and stainless sink with covers. Ready to cook? Try the new sealed-burner cooktop or versatile microwave/convection oven.

BEDROOM. Now here's a list of features that won't put you to sleep — a 20" color TV, solid surface nightstands and dresser top, and an oversized wardrobe with mirrored doors. We also offer an optional king bed, comfort air mattress and ceiling fan.

FULL-WALL SLIDE

▼ PANASuite™

ENJOY LIFE TO THE FULLEST.

Here's a big idea. What if, instead of having two slides side-by-side, you had one luxurious long one? Introducing PanaSuite™, the new full-wall slide from Monaco Coach Corporation. Just imagine it. Wide open aisles. No obstructions or tight corners. And more livability at every turn. Ahhh yes, we *thought* you'd like that.

PanaSuite™ is standard on the new 40SFT.





DIPLOMAT®

FIRST CLASS ALL THE WAY.

If you're going to see the world, you might as well do it in grand style. Welcome to the 2007 Diplomat. This perennial favorite offers first-class accommodations all the way — including stunning new decor packages and luxuries like a home theater system and a 32" flatscreen LCD TV on the 40SKQ shown here. You'll also love the comfort of legless dinette tables and a new full-wall slide on the 40SFT.

GALLEY. High style meets low fuss in the galley with its solid surface countertops, ceramic tile backsplash with Corian® molding, and stainless sink with covers. Ready to cook? Try the new sealed-burner cooktop or versatile microwave/convection oven.

BEDROOM. Now here's a list of features that won't put you to sleep — a 20" color TV, solid surface nightstands and dresser top, and an oversized wardrobe with mirrored doors. We also offer an optional king bed, comfort air mattress and ceiling fan.

FULL-WALL SLIDE

✓ PANASuite™

ENJOY LIFE TO THE FULLEST.

Here's a big idea. What if, instead of having two slides side-by-side, you had one luxurious long one? Introducing PanaSuite™, the new full-wall slide from Monaco Coach Corporation. Just imagine it. Wide open aisles. No obstructions or tight corners. And more livability at every turn. Ahhh yes, we *thought* you'd like that.

PanaSuite™ is standard on the new 40SFT.



LUXURY. INNOVATION. HAPPY TRAVELERS. IT ALL SAYS MONACO.

INTERIOR



Wherever you travel across America, it's easy to spot the Monaco owners. They're the ones with the smug, happy grins on their faces. And who could blame them? When you own a Monaco, you own the best. The best in luxury, performance, safety, technology and comfort. It's all here. And it's all yours for the taking. Come on, freedom lovers. Make your move to Monaco luxury. After all, you already know how to grin.



40SKQ | NEWPORT CHERRY | EDWARDIAN BRONZE

LUXURY. INNOVATION. HAPPY TRAVELERS. IT ALL SAYS MONACO.

INTERIOR



Wherever you travel across America, it's easy to spot the Monaco owners. They're the ones with the smug, happy grins on their faces. And who could blame them? When you own a Monaco, you own the best. The best in luxury, performance, safety, technology and comfort. It's all here. And it's all yours for the taking. Come on, freedom lovers. Make your move to Monaco luxury. After all, you already know how to grin.





DIPLOMAT™

40SKQ | NEWPORT CHERRY | EDWARDIAN BRONZE

LIFE IN HIGH GEAR.



DIPLOMAT®

40SKQ | NEWPORT CHERRY | EDWARDIAN BRONZE

LIFE IN HIGH GEAR.





Okay, fellow drivers. It's time to get your life out of neutral and start living — with the 2007 Diplomat. Everything in the cockpit is designed to make driving a joy. You'll find a color rear vision system with audio and adjustable camera. An Ultraleather™ captain's chair with six-way power. Even adjustable brake and accelerator pedals. This year, we've also added an optional GPS navigation system and Sirius satellite radio for music, news and sports programming anywhere you roam.

RV SANI-CON SYSTEM. Hook-ups are easier and cleaner with the optional RV Sani-Con tank flush system.

COCKPIT. Kick back and relax in the luxurious captain's chairs upholstered in rich Ultraleather™ (OptimaLeather™ if you choose the Ralph Lauren decor). The pilot seat features 6-way power, and the co-pilot seat has its own power footrest.

SIDE-SWING BAGGAGE DOORS. Look, no more bumping your head! Our baggage doors open from the side — not the top — for easier access to your belongings. The Diplomat also features a large pass-through bay with slide-out tray, so everything's within easy reach.



NO SEAMS. ADDED SAFETY.

When you're driving, you need to see everything in front of you — pedestrians, potholes, possums scurrying across the road. With our exclusive Panaview™ 1-Piece Windshield, you can. There's no annoying black rubber seam running down the middle of your windshield. It's the largest unobstructed view in the industry. That's big!





COCKPIT/EXTERIOR



Okay, fellow drivers. It's time to get your life out of neutral and start living — with the 2007 Diplomat. Everything in the cockpit is designed to make driving a joy. You'll find a color rear vision system with audio and adjustable camera. An Ultraleather™ captain's chair with six-way power. Even adjustable brake and accelerator pedals. This year, we've also added an optional GPS navigation system and Sirius satellite radio for music, news and sports programming anywhere you roam.

RV SANI-CON SYSTEM. Hook-ups are easier and cleaner with the optional RV Sani-Con tank flush system.

COCKPIT. Kick back and relax in the luxurious captain's chairs upholstered in rich Ultraleather™ (OptimaLeather™ if you choose the Ralph Lauren decor). The pilot seat features 6-way power, and the co-pilot seat has its own power footrest.

SIDE-SWING BAGGAGE DOORS. Look, no more bumping your head! Our baggage doors open from the side — not the top — for easier access to your belongings. The Diplomat also features a large pass-through bay with slide-out tray, so everything's within easy reach.



NO SEAMS. ADDED SAFETY.

When you're driving, you need to see everything in front of you — pedestrians, potholes, possums scurrying across the road. With our exclusive Panaview™ 1-Piece Windshield, you can. There's no annoying black rubber seam running down the middle of your windshield. It's the largest unobstructed view in the industry. That's big!



DIPLOMAT™



ROADMASTER RR8R RAISED RAIL CHASSIS

1 The Diplomat features Monaco's exclusive **Alumaframe® Superstructure**.

Our revolutionary system of aluminum C-Channel crossmembers runs the entire length of the unit, with double-welded intersections for added strength. This rigid design is both lighter and sturdier than wood or tubular aluminum frames — and much more reliable than butt-welded or screwed joint designs. From dirt roads to potholes, you can count on Alumaframe® to handle the relentless stresses of the road and provide superior structural integrity for many years to come.



Alumaframe®
(C-Channel)

2 A **steel cage cockpit** gives the Roadmaster chassis incomparable strength and safety in the front of the coach.

3 Every Roadmaster chassis features a **steel firewall** for added protection in the cockpit.

4 The main rails feature an exclusive **raised rail design** which provides for larger full pass-through storage bays with flush floors. Other highlights include a 3/8" thick frame rail — compared to the 1/4" of other manufacturers — and a stacked aluminum intercooler and radiator for optimum heat transfer and cooling.

5 **Dual fuel fill** allows you to fill the tank from either side of the coach, for greater convenience and flexibility at the pump.

6 The **steel truss system** is engineered as part of the chassis and provides outstanding strength and rigidity plus pass-through storage. In addition, the structure is pre-primed and coated with a rust-inhibiting paint.

7 **Eight air bags** work in conjunction with eight gas-powered shock absorbers to prevent road trauma from ever reaching the coach.

Monitored leveling sensors continually adjust the air pressure at each axle to maintain a level ride and eliminate nosediving, weight transfer, and floating on curved roads. This system also stabilizes the coach on uneven surfaces.

MAY WE BUILD YOU A CHASSIS?

Did you know that every Roadmaster chassis is custom designed and built for the Monaco coach that will ride on it? It's a novel idea, but our owners seem to like it. And it pays off — in better performance, safety and reliability. Owners also like the fact that Roadmaster, a division of

Monaco Coach Corporation, only does one thing: They build chassis for motorhomes. Not trucks. Not buses. Just motorhomes. So naturally, they do it better. No wonder Roadmaster is the leading high-end diesel chassis manufacturer in America.

DIPLOMAT®



ROADMASTER RR8R RAISED RAIL CHASSIS

1 The Diplomat features Monaco's exclusive Alumaframe® Superstructure.

Our revolutionary system of aluminum C-Channel crossmembers runs the entire length of the unit, with double-welded intersections for added strength. This rigid design is both lighter and sturdier than wood or tubular aluminum frames — and much more reliable than butt-welded or screwed joint designs. From dirt roads to potholes, you can count on Alumaframe® to handle the relentless stresses of the road and provide superior structural integrity for many years to come.



Alumaframe®
(C-Channel)

2 A steel cage cockpit gives the Roadmaster chassis incomparable strength and safety in the front of the coach.

3 Every Roadmaster chassis features a steel firewall for added protection in the cockpit.

4 The main rails feature an exclusive raised rail design which provides for larger full pass-through storage bays with flush floors. Other highlights include a 3/8" thick frame rail — compared to the 1/4" of other manufacturers — and a stacked aluminum intercooler and radiator for optimum heat transfer and cooling.

5 Dual fuel fill allows you to fill the tank from either side of the coach, for greater convenience and flexibility at the pump.

6 The steel truss system is engineered as part of the chassis and provides outstanding strength and rigidity plus pass-through storage. In addition, the structure is pre-primed and coated with a rust-inhibiting paint.

7 Eight air bags work in conjunction with eight gas-powered shock absorbers to prevent road trauma from ever reaching the coach.

Monitored leveling sensors continually adjust the air pressure at each axle to maintain a level ride and eliminate nosediving, weight transfer, and floating on curved roads. This system also stabilizes the coach on uneven surfaces.

MAY WE BUILD YOU A CHASSIS?

Did you know that every Roadmaster chassis is custom designed and built for the Monaco coach that will ride on it? It's a novel idea, but our owners seem to like it. And it pays off — in better performance, safety and reliability. Owners also like the fact that Roadmaster, a division of

Monaco Coach Corporation, only does one thing: They build chassis for motorhomes. Not trucks. Not buses. Just motorhomes. So naturally, they do it better. No wonder Roadmaster is the leading high-end diesel chassis manufacturer in America.

OUTBOARD AIR BAG SUSPENSION

The outboard-mounted air bags are protected by two steel plates and are placed farther apart than the competition, providing a wider and more stable platform for the coach. The active suspension automatically adjusts the pressure of the air bags as you drive and virtually eliminates nosediving and the side-to-side body sway associated with high wind conditions, curvy roads and emergency maneuvers.



The Diplomat features a gutsy standard Cummins® ISL 400 diesel engine.

8 Automatic Traction Control (ATC) eliminates wheel slippage in slick conditions and heightens control. The Anti-Lock Braking System (ABS) gives you superior stopping power, especially on steep grades. Together, these sophisticated systems offer the very best safety on the road.

9 Allison® 3000 MH 6-speed World Transmission and electronic shifter.

The three-point engine mounting system lowers the coach's center of gravity and reduces the amount of vibration that reaches the coach. The mounting also makes the engine easier to service.

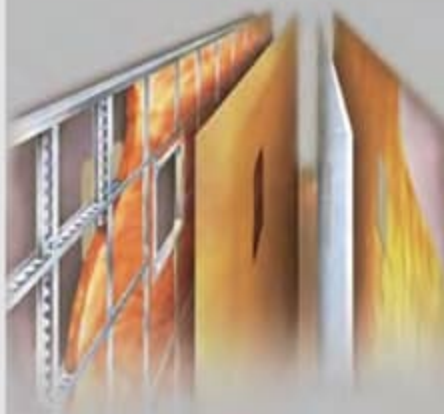
A 10,000 lb. tow hitch rating is the highest in its class.

CONSTRUCTION



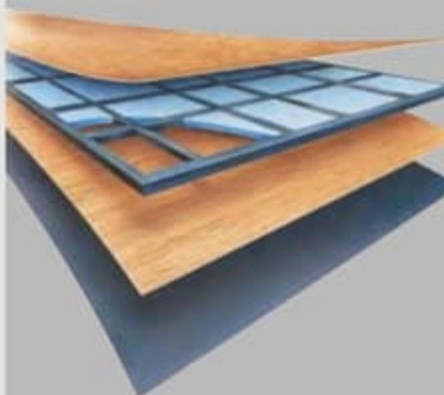
9-LAYER ROOF CONSTRUCTION: (top to bottom)

- One-piece peaked fiberglass roof
- Luaun backing
- Thick, tapered bead foam insulation
- Aluminum double I-beam superstructure filled with fiberglass insulation
- Vapor barrier
- Structure foam: thermal insulative barrier
- 1/2" bead foam insulation
- Foam padding for extra insulation
- Padded vinyl ceiling



5-LAYER SIDEWALL CONSTRUCTION: (left to right)

- Gel coat fiberglass
- Interlocking C-Channel filled with 1-1/2" fiberglass insulation glued in place so it doesn't sag or leave spaces uninsulated
- Vapor barrier
- Bead foam saves energy and provides a thermal insulative barrier
- Interior paneling



5-LAYER FLOOR CONSTRUCTION: (top to bottom)

- Structurwood™
- 1-1/2" tube
- Blue foam
- Luaun
- Darco



ASSISTANCE

SALES • TECH • ROADSIDE

1-877-4MONACO

WE'RE HERE. ANYTIME, EVERY TIME.

- Reach us anytime — literally — via our live customer support line.
- Drive in to one of our 350 Service Centers.
- Enjoy the first year free when you enroll in our Owner Advantage Roadside Assistance Program.
- See where it all begins with a tour of one of our facilities in Indiana or Oregon. Call 1-800-650-7337 or 1-800-634-0855 to find out more.

OUTBOARD AIR BAG SUSPENSION

The outboard-mounted air bags are protected by two steel plates and are placed farther apart than the competition, providing a wider and more stable platform for the coach. The active suspension automatically adjusts the pressure of the air bags as you drive and virtually eliminates nosediving and the side-to-side body sway associated with high wind conditions, curvy roads and emergency maneuvers.



The Diplomat features a gutsy standard Cummins® ISL 400 diesel engine.

8 Automatic Traction Control (ATC) eliminates wheel slippage in slick conditions and heightens control. The Anti-Lock Braking System (ABS) gives you superior stopping power, especially on steep grades. Together, these sophisticated systems offer the very best safety on the road.

9 Allison® 3000 MH 6-speed World Transmission and electronic shifter.

The three-point engine mounting system lowers the coach's center of gravity and reduces the amount of vibration that reaches the coach. The mounting also makes the engine easier to service.

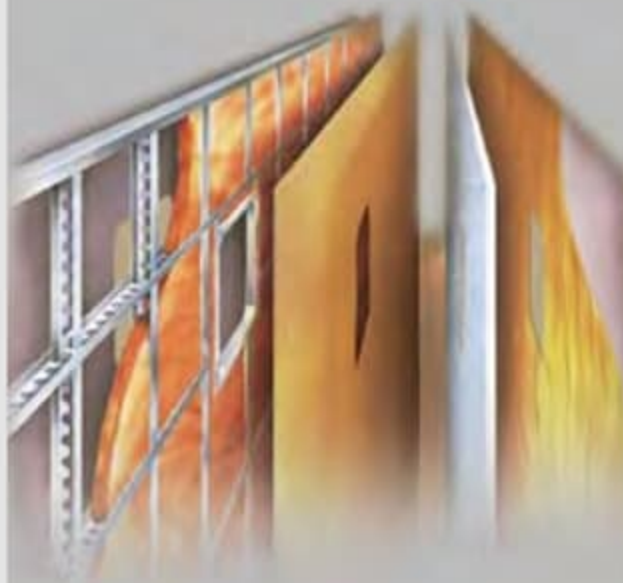
A 10,000 lb. tow hitch rating is the highest in its class.

CONSTRUCTION



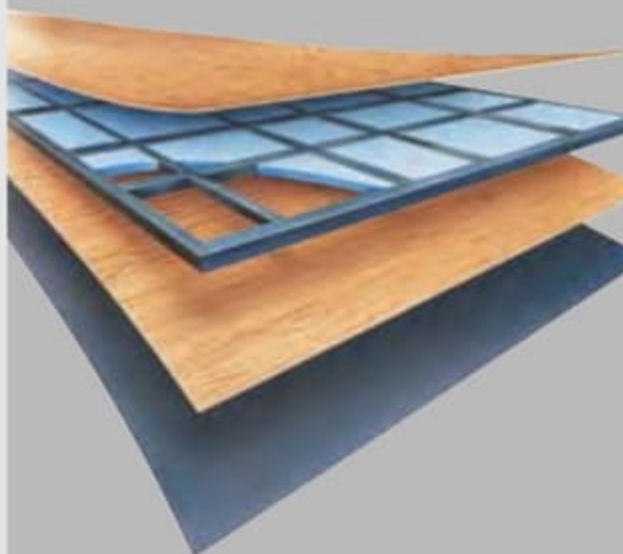
9-LAYER ROOF CONSTRUCTION: (top to bottom)

- One-piece peaked fiberglass roof
- Luaun backing
- Thick, tapered bead foam insulation
- Aluminum double I-beam superstructure filled with fiberglass insulation
- Vapor barrier
- Structure foam: thermal insulative barrier
- 1/2" bead foam insulation
- Foam padding for extra insulation
- Padded vinyl ceiling



5-LAYER SIDEWALL CONSTRUCTION: (left to right)

- Gel coat fiberglass
- Interlocking C-Channel filled with 1-1/2" fiberglass insulation glued in place so it doesn't sag or leave spaces uninsulated
- Vapor barrier
- Bead foam saves energy and provides a thermal insulative barrier
- Interior paneling



5-LAYER FLOOR CONSTRUCTION: (top to bottom)

- Structurwood™
- 1-1/2" tube
- Blue foam
- Luaun
- Darco



ASSISTANCE

SALES • TECH • ROADSIDE

1-877-4MONACO

WE'RE HERE. ANYTIME, EVERY TIME.

- Reach us anytime — literally — via our live customer support line.
- Drive in to one of our 350 Service Centers.
- Enjoy the first year free when you enroll in our Owner Advantage Roadside Assistance Program.
- See where it all begins with a tour of one of our facilities in Indiana or Oregon. Call 1-800-650-7337 or 1-800-634-0855 to find out more.

DIPLOMAT™

NEW VINTAGE OAK



NEWPORT CHERRY



CHAMPAGNE SELECT



BROOKWOOD



EDWARDIAN BRONZE



RALPH LAUREN YORKSHIRE



DIPLOMAT®

NEW VINTAGE OAK



NEWPORT CHERRY



CHAMPAGNE SELECT



BROOKWOOD



EDWARDIAN BRONZE



RALPH LAUREN YORKSHIRE





WHICH WAY WILL YOU GO?

We know you love choices. That's why our designers give you so many tempting options. From mild to wild, discriminating to daring, Monaco offers lots of fun ways to go.



STONE MOUNTAIN



WATERS EDGE



Note: Colors depicted are a reasonable representation though they may not be an exact match of the actual colors due to variances in processing and production. See your dealer for actual fabric and paint chip samples.

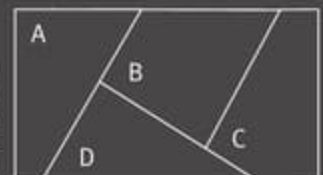
Better Stain Protection

Manufactured in, not added on. For added protection against stains, soil repellent is applied to virtually all upholstery fabric during the finishing process for superior coverage.*

* Brand and application of upholstery fabric protection may vary depending on date recreational vehicle was manufactured.



Carpet A
Dinette B
Sofa C
Bedspread D





WHICH WAY WILL YOU GO?

We know you love choices. That's why our designers give you so many tempting options. From mild to wild, discriminating to daring, Monaco offers lots of fun ways to go.



STONE MOUNTAIN



WATERS EDGE



Note: Colors depicted are a reasonable representation though they may not be an exact match of the actual colors due to variances in processing and production. See your dealer for actual fabric and paint chip samples.

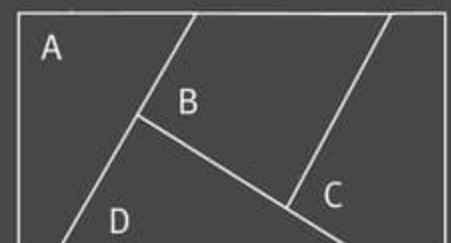
Better Stain Protection

Manufactured in, not added on. For added protection against stains, soil repellent is applied to virtually all upholstery fabric during the finishing process for superior coverage.*

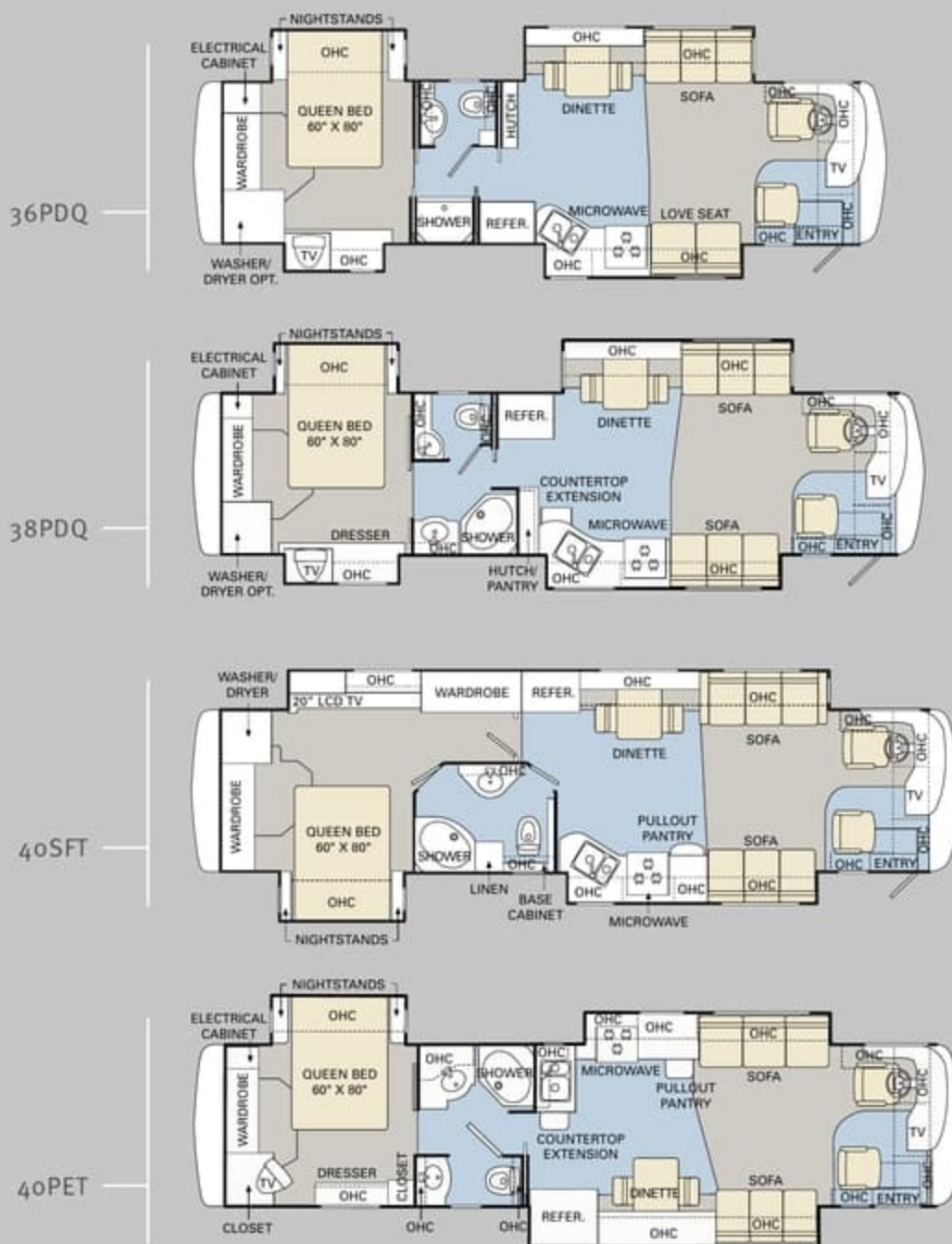
* Brand and application of upholstery fabric protection may vary depending on date recreational vehicle was manufactured.



Carpet A
Dinette B
Sofa C
Bedsprad D



DIPLOMAT™

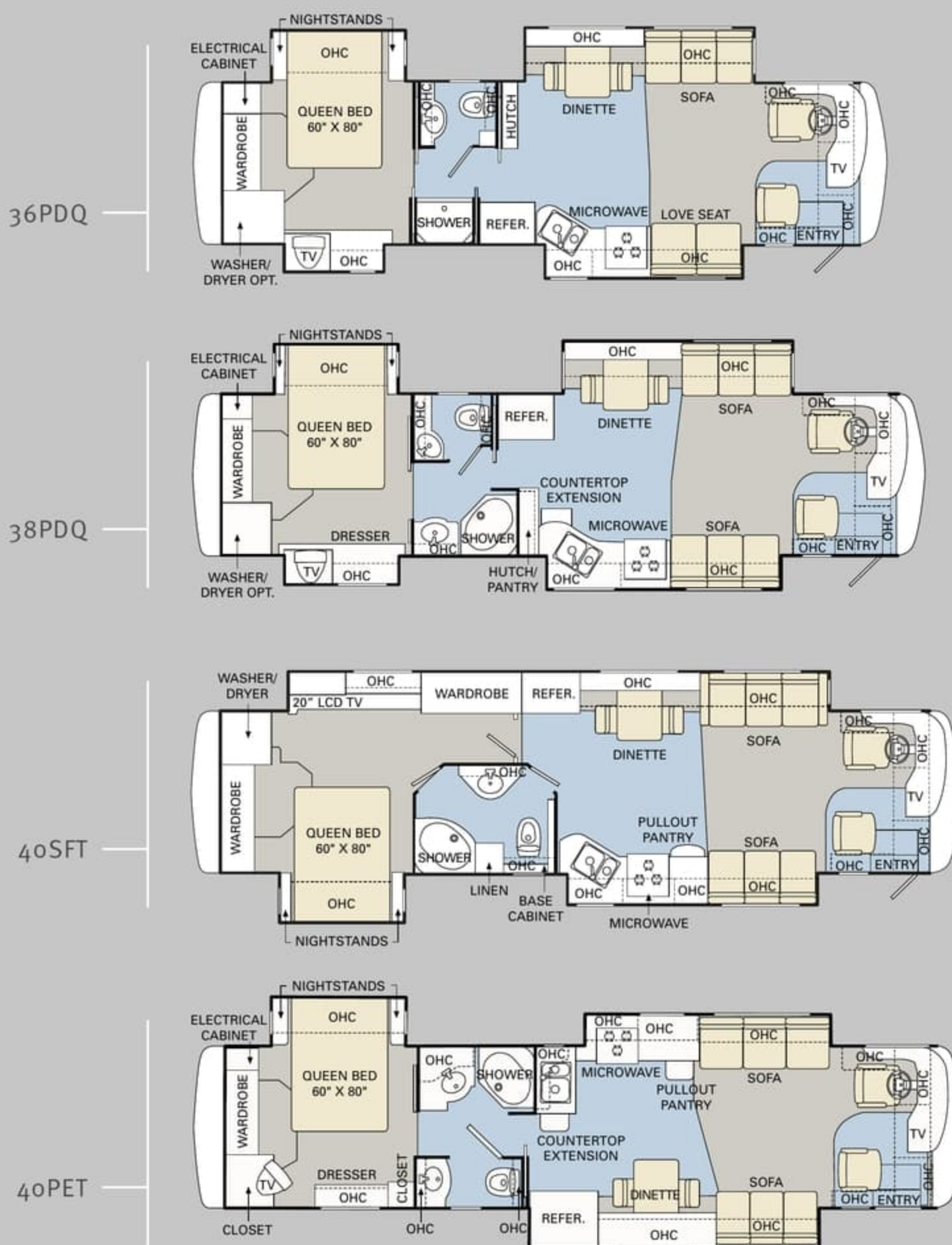


Ready to choose? The 2007 Diplomat is available in a wide selection of livable floorplans from 36 to 40 feet, with triple or quad slide-outs. And this year, we're offering the new 40SFT with PanaSuite™ full-wall slide. It provides maximum uninterrupted living space on the driver's side of the coach.

FURNITURE OPTIONS:

- Roadside: Leather Hide-A-Bed with Air Mattress
- Roadside: Wraparound Computer Desk with OptimaLeather™ Euro-Recliner with Heat and Massage (38PDQ, 40PRQ, 40PDQ)
- Curbside: Leather Easy Bed Sofa (N/A: 36PDQ, 40PAQ)
- Curbside: Leather Recliner (40PAQ)
- Curbside: OptimaLeather™ Euro-Recliner with Ottoman, Heat and Massage (40PAQ)
- Curbside: Love Seat Sofa (36PDQ)
- Legless Dream Dinette System with Arched Back Wood Booth Dinette (38PDQ, 40SKQ)
- Neo-Angled Bathtub (N/A: 36PDQ)

TILE CARPET



Ready to choose? The 2007 Diplomat is available in a wide selection of livable floorplans from 36 to 40 feet, with triple or quad slide-outs. And this year, we're offering the new 40SFT with PanaSuite™ full-wall slide. It provides maximum uninterrupted living space on the driver's side of the coach.

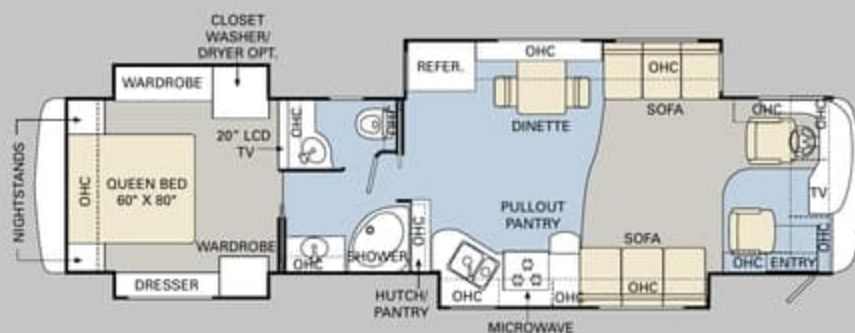
FURNITURE OPTIONS:

- Roadside: Leather Hide-A-Bed with Air Mattress
- Roadside: Wraparound Computer Desk with OptimaLeather™ Euro-Recliner with Heat and Massage (38PDQ, 40PRQ, 40PDQ)
- Curbside: Leather Easy Bed Sofa (N/A: 36PDQ, 40PAQ)
- Curbside: Leather Recliner (40PAQ)
- Curbside: OptimaLeather™ Euro-Recliner with Ottoman, Heat and Massage (40PAQ)
- Curbside: Love Seat Sofa (36PDQ)
- Legless Dream Dinette System with Arched Back Wood Booth Dinette (38PDQ, 40SKQ)
- Neo-Angled Bathtub (N/A: 36PDQ)

 TILE  CARPET



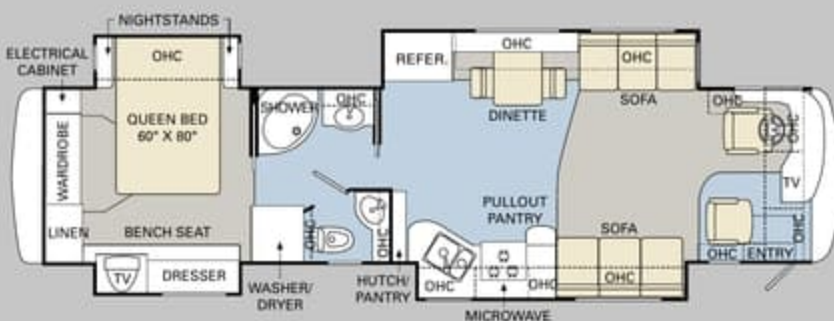
40SKQ



40PRQ



40PAQ



40PDQ

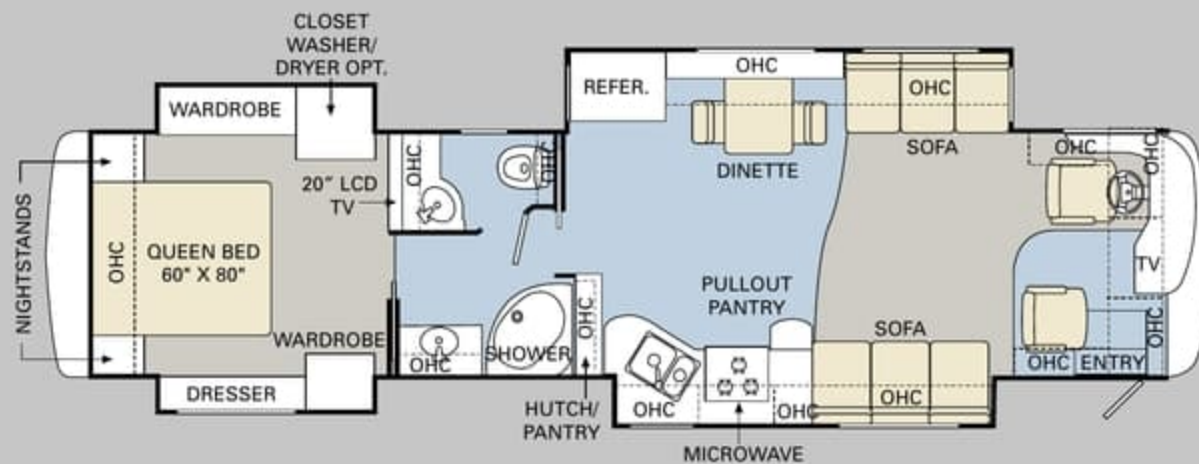
ALL ROADS LEAD TO WWW.MONACOCOACH.COM.

Wherever the road takes you, you're never more than a click away from your friends at Monaco. Just go to www.monacocoach.com for all the latest product news, club dates and destinations, a dealer locator function, and factory tour information. You can also e-mail us directly through the site at any time.

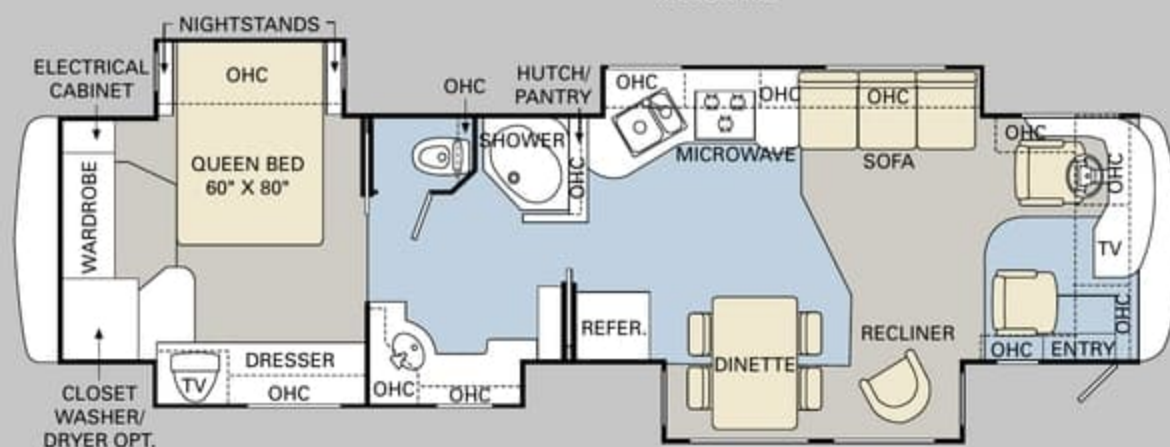




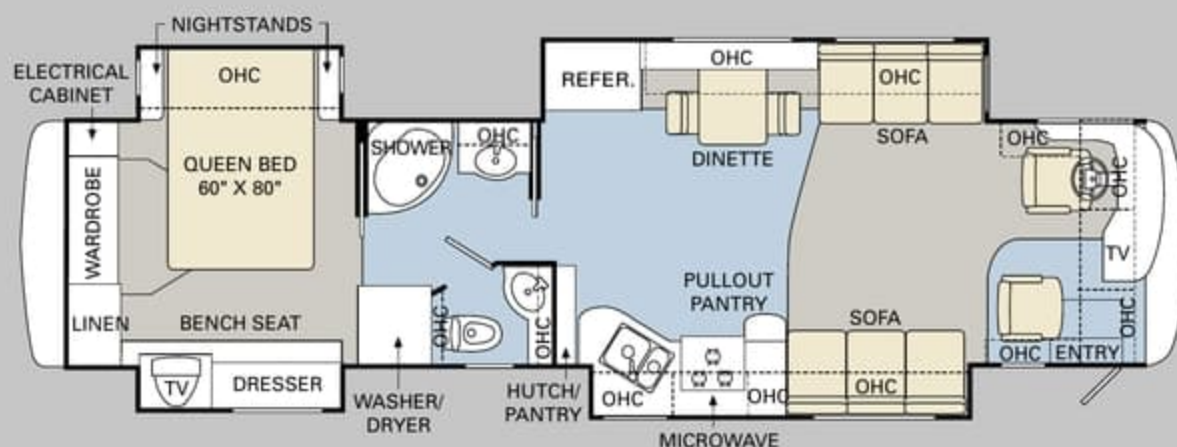
40SKQ



40PRQ



40PAQ



40PDQ

ALL ROADS LEAD TO WWW.MONACOCOACH.COM.

Wherever the road takes you, you're never more than a click away from your friends at Monaco. Just go to www.monacocoach.com for all the latest product news, club dates and destinations, a dealer locator function, and factory tour information. You can also e-mail us directly through the site at any time.



	Weight Ratings (Lbs.)				Measurements						Tank Capacity (Gal.) ¹					
	Gross Vehicle	Gross Combined ²	Front Gross Axle	Rear Gross Axle	Wheelbase	Overall Length	Overall Height (with A/O (add 5" for satellite option))	Interior Height	Interior Width	Exterior Width	Water Heater	Gray Tank	Black Tank	Fresh Tank	LP Tank ³	Fuel Tank
36PDQ	33,000	43,000	13,000	20,000	213"	36' 11"	12' 10"	84"	94.5"	100.5"	10	62	40	100	39	100
38PDQ	33,000	43,000	13,000	20,000	237"	38' 11"	12' 10"	84"	94.5"	100.5"	10	62	40	100	39	100
40SFT	33,000	43,000	13,000	20,000	261"	40' 11"	12' 10"	84"	94.5"	100.5"	10	62	40	100	39	100
40PET	33,000	43,000	13,000	20,000	261"	40' 11"	12' 10"	84"	94.5"	100.5"	10	62	40	100	39	100
40SKQ	33,000	43,000	13,000	20,000	261"	40' 11"	12' 10"	84"	94.5"	100.5"	10	62	40	100	39	100
40PRQ	33,000	43,000	13,000	20,000	261"	40' 11"	12' 10"	84"	94.5"	100.5"	10	62	40	100	39	100
40PAQ	33,000	43,000	13,000	20,000	261"	40' 11"	12' 10"	84"	94.5"	100.5"	10	62	40	100	39	100
40PDQ	33,000	43,000	13,000	20,000	261"	40' 11"	12' 10"	84"	94.5"	100.5"	10	62	40	100	39	100

¹Towing capacity is limited by GCWR; your vehicle's towing capacity is the difference between the GCWR and the actual vehicle weight, including all water, fuel, passengers and cargo. Your towed vehicle should be equipped with auxiliary brakes if the weight of the towed vehicle exceeds 1,000 lbs. Consult your owner's manual for further towing information.

²All tank capacities are estimated based upon calculations provided by the tank manufacturers and represent approximate capacities. The actual "usable capacity" may be greater or less than the estimated capacities based upon fabrication and installation of the tanks.

³Actual filled LP capacity is 80% of listing due to safety shut-off required on tank.

The actual overall length of the recreational vehicle may differ from that indicated in the brochure due to variances in the manufacturing process and/or installed components. The actual length may be greater or less than that indicated. Due to the large variety of options and floorplan arrangements available to our customers, actual weights for each unit can differ significantly. Monaco Coach provides a weight sticker on each unit we produce which includes that unit's tank capacities and approximate weight. Consult your local Monaco Coach dealer for unit availability and further information. The information printed in this brochure reflects product design, fabrication, and component parts at the date of printing. The manufacturer reserves the right, at any time, to make changes in product design or material or component specifications as its sole option, without notice. This

includes the substitution of components of a different brand or trade name which will result in comparable performance. All information printed in this brochure is subject to change after the date of printing. Some features shown or mentioned in this brochure are optional and may only be available in selected floorplans. Photographs may show props or decorations that are not standard equipment on Monaco Coach models. Monaco Coach, the Monaco logo and its design, are registered trademarks. All other products and company names are trademarks and/or registered trademarks of their respective holders. While the color of the motorhome's exterior and the interior fabrics depicted in this sales brochure are fair and reasonable depictions, the colors depicted may not be an exact match of the actual colors because of the variances in photo-processing and variances caused by inserting the

photographs within the sales brochure. Due to product improvements, changes during the model year and/or transcription errors that may occur, information represented within this brochure may not be accurate at the time of your purchase. If certain information is significant to your purchasing decision, please confirm the information with your dealer prior to submitting your order. Component part and appliance manufacturers issue limited warranties covering those portions of the recreational vehicle not covered by the Limited Warranties issued by Monaco Coach Corporation. To learn which specific component parts and appliances are excluded from the Limited Warranties issued by Monaco Coach Corporation, please contact your selling dealership of Monaco Coach Corporation directly, or review the warranty packet inside the recreational vehicle.

	Weight Ratings (Lbs.)																		
		Gross Vehicle	Gross Combined ¹	Front Gross Axle	Rear Gross Axle	Measurements	Wheelbase	Overall Length	Overall Height (with A/C) (add 5" for satellite option)	Interior Height	Interior Width	Exterior Width	Tank Capacity (Gal.) ²	Water Heater	Gray Tank	Black Tank	Fresh Tank	LP Tank ³	Fuel Tank
36PDQ		33,000	43,000	13,000	20,000		213"	36' 11"	12' 10"	84"	94.5"	100.5"		10	62	40	100	39	100
38PDQ		33,000	43,000	13,000	20,000		237"	38' 11"	12' 10"	84"	94.5"	100.5"		10	62	40	100	39	100
40SFT		33,000	43,000	13,000	20,000		261"	40' 11"	12' 10"	84"	94.5"	100.5"		10	62	40	100	39	100
40PET		33,000	43,000	13,000	20,000		261"	40' 11"	12' 10"	84"	94.5"	100.5"		10	62	40	100	39	100
40SKQ		33,000	43,000	13,000	20,000		261"	40' 11"	12' 10"	84"	94.5"	100.5"		10	62	40	100	39	100
40PRQ		33,000	43,000	13,000	20,000		261"	40' 11"	12' 10"	84"	94.5"	100.5"		10	62	40	100	39	100
40PAQ		33,000	43,000	13,000	20,000		261"	40' 11"	12' 10"	84"	94.5"	100.5"		10	62	40	100	39	100
40PDQ		33,000	43,000	13,000	20,000		261"	40' 11"	12' 10"	84"	94.5"	100.5"		10	62	40	100	39	100

¹Towing capacity is limited by GCWR; your vehicle's towing capacity is the difference between the GCWR and the actual vehicle weight, including all water, fuel, passengers and cargo. Your towed vehicle should be equipped with auxiliary brakes if the weight of the towed vehicle exceeds 1,000 lbs. Consult your owner's manual for further towing information.

²All tank capacities are estimated based upon calculations provided by the tank manufacturers and represent approximate capacities. The actual "usable capacity" may be greater or less than the estimated capacities based upon fabrication and installation of the tanks.

³Actual filled LP capacity is 80% of listing due to safety shut-off required on tank.

The actual overall length of the recreational vehicle may differ from that indicated in the brochure due to variances in the manufacturing process and/or installed components. The actual length may be greater or less than that indicated. Due to the large variety of options and floorplan arrangements available to our customers, actual weights for each unit can differ significantly. Monaco Coach provides a weight sticker on each unit we produce which includes that unit's tank capacities and approximate weight. Consult your local Monaco Coach dealer for unit availability and further information. The information printed in this brochure reflects product design, fabrication, and component parts at the date of printing. The manufacturer reserves the right, at any time, to make changes in product design or material or component specifications as its sole option, without notice. This

includes the substitution of components of a different brand or trade name which will result in comparable performance. All information printed in this brochure is subject to change after the date of printing. Some features shown or mentioned in this brochure are optional and may only be available in selected floorplans. Photographs may show props or decorations that are not standard equipment on Monaco Coach models. Monaco Coach, the Monaco logo and its design, are registered trademarks. All other products and company names are trademarks and/or registered trademarks of their respective holders. While the color of the motorhome's exterior and the interior fabrics depicted in this sales brochure are fair and reasonable depictions, the colors depicted may not be an exact match of the actual colors because of the variances in photo-processing and variances caused by inserting the

photographs within the sales brochure. Due to product improvements, changes during the model year and/or transcription errors that may occur, information represented within this brochure may not be accurate at the time of your purchase. If certain information is significant to your purchasing decision, please confirm the information with your dealer prior to submitting your order. Component part and appliance manufacturers issue limited warranties covering those portions of the recreational vehicle not covered by the Limited Warranties issued by Monaco Coach Corporation. To learn which specific component parts and appliances are excluded from the Limited Warranties issued by Monaco Coach Corporation, please contact your selling dealership or Monaco Coach Corporation directly, or review the warranty packet inside the recreational vehicle.



BODY CONSTRUCTION

- Alumaframe® Superstructure
- Steel Cage Cockpit Construction
- Peaked One-Piece Fiberglass Roof with Fiberglass Insulation
- Panaview™ 1-Piece Front Windshield
- Interior Height 84"
- Smooth Gel Coat Fiberglass Exterior Walls
- Front Molded Fiberglass Cap
- New Rear Molded Fiberglass Cap with Integrated Air Intake
- Pullout Generator Tray with One-Piece Door
- Rear Engine Door Struts
- Steel Framed Floor on Steel Trusses
- Laminated Structurwood™ Flooring
- Electric Flush-Floor Stepwell Cover
- Interior Paneling with 3/4" Insulation
- Foam Insulated Floor Framing with Luaun Backer
- Storage Bay Slide-Out Tray (Complete Pass-Through)
- 17.5" Chrome Power Heated Mirror with Turn Signal
- Side-Hinged Baggage Doors; All Door Locations with Redesigned Extrusion and Latch Locations
- Flush-Mounted Metal Fuel Doors
- One-Piece Polyethylene Pass-Through Storage Compartment
- Full-Length Mud Flap
- 3M Film Front Mask
- Deluxe Full-Body Paint
- Interior Entry Step Storage
- Roof Ladder
- Undercoating

OPTIONS

- Slide-Out Battery Tray
- Standard Run Package: 3-Camera Vision System, Slide-Out Battery Tray, Aladdin™ Junior System, Solid Surface Kitchen Sink, Exterior Tank Monitor Gauges, Power Cord Reel, Auto Gen Start, Keyless Entry

CHASSIS/ENGINE/SUSPENSION

- Roadmaster Raised Rail RR8R-Series Chassis
- Cummins® 400 HP ISL Engine with Allison® 3000 MH 6-Speed World Transmission and Electronic Shifter
- Torque: 1,200 lbs./ft. Max. Net @ 1,300 RPM
- Engine Displacement: 540"/8.8L
- Aluminum Rear-Mounted Radiator with CAC Cooler
- Dual Fuel Fill
- 160 Amp Alternator
- Rear Axle Ratio: 4.30:1
- Goodyear Radial Tires: 275/80R/22.5
- Pre-Wire for Supplemental Braking System
- Polished Aluminum Wheels
- Cushion Air Glide Suspension with Eight Outboard-Mounted Air Bags and Eight Shock Absorbers
- Anti-Lock Braking System with Full Air Brakes
- Automatic Traction Control
- Exhaust Brake
- Auto Slack Adjusters on Brakes
- Engine Block Heater
- Rock Shield to Radiator
- 10,000 Lb. Hitch Receiver with Seven-Point Connector
- Automatic Hydraulic Leveling Jacks

COCKPIT

- Automotive Dash with Aztec Pewter Instrumentation Panel
- CD Player/Radio with DVD Player, Sirius-Ready Compatibility, Weather Band, IR Repeater Remote
- Power Sunvisors
- Pilot and Co-Pilot Pull-Down Sunshades
- Wood Framed Cabinet Doors with Smoked Glass over Front Entertainment Center System (N/A: 40SKQ)
- Cockpit Front and Side Overhead Cabinet Doors, Top-Hinged Doors with Self-Supporting Hinges
- Adjustable Brake and Accelerator Pedals
- 110V, 12V and Phone Outlet
- Color Rear Vision System with Audio and Adjustable Camera
- Lighted VIP Smartwheel® Multiplexed Steering Wheel with Controls for Windshield Wipers, ICC and Cruise Control
- Intermittent Windshield Wipers
- 10-Quart Tank for Windshield Fluid with Fluid Sensor to Tank and Low Wash Indicator on Dash
- Audible Turn Signals
- Roof-Mounted Air Horn
- CB Prep
- Ultraleather™ Six-Way Power Pilot and Co-Pilot Seat with Power Footrest
- OptimaLeather™ Pilot and Co-Pilot Seats (with Ralph Lauren Yorkshire Decor)
- Power Steering
- Color-Coordinated Carpeted Floor Mats

OPTIONS

- 3-Camera Rear Vision System with Audio and Adjustable Center Camera
- GPS System
- Sirius Satellite Radio System (6 Months Pre-Paid Activation)
- Interior Solar Privacy Sunscreens
- Aladdin™ Junior System
- 10-Disc CD Changer
- Auxiliary Defroster

SAFETY

- Fire Extinguisher
- Deadbolt Lock on Entrance Door
- 120V GFI Protected Circuit (Kitchen, Bath, Exterior)
- LP Gas Detector
- Smoke Detector
- Carbon Monoxide Detector
- Driver and Passenger Three-Point Seatbelts (Wall-Mounted)
- Third Brake Safety Light
- Egress Window(s)



BODY CONSTRUCTION

- › Alumaframe® Superstructure
- › Steel Cage Cockpit Construction
- › Peaked One-Piece Fiberglass Roof with Fiberglass Insulation
- › Panaview™ 1-Piece Front Windshield
- › Interior Height 84"
- › Smooth Gel Coat Fiberglass Exterior Walls
- › Front Molded Fiberglass Cap
- › New Rear Molded Fiberglass Cap with Integrated Air Intake
- › Pullout Generator Tray with One-Piece Door
- › Rear Engine Door Struts
- › Steel Framed Floor on Steel Trusses
- › Laminated Structurwood™ Flooring
- › Electric Flush-Floor Stepwell Cover
- › Interior Paneling with 3/4" Insulation
- › Foam Insulated Floor Framing with Luaun Backer
- › Storage Bay Slide-Out Tray (Complete Pass-Through)
- › 17.5" Chrome Power Heated Mirror with Turn Signal
- › Side-Hinged Baggage Doors; All Door Locations with Redesigned Extrusion and Latch Locations
- › Flush-Mounted Metal Fuel Doors
- › One-Piece Polyethylene Pass-Through Storage Compartment
- › Full-Length Mud Flap
- › 3M Film Front Mask
- › Deluxe Full-Body Paint
- › Interior Entry Step Storage
- › Roof Ladder
- › Undercoating

OPTIONS

- › Slide-Out Battery Tray
- › Standard Run Package: 3-Camera Vision System, Slide-Out Battery Tray, Aladdin™ Junior System, Solid Surface Kitchen Sink, Exterior Tank Monitor Gauges, Power Cord Reel, Auto Gen Start, Keyless Entry

CHASSIS/ENGINE/SUSPENSION

- › Roadmaster Raised Rail RR8R-Series Chassis
- › Cummins® 400 HP ISL Engine with Allison® 3000 MH 6-Speed World Transmission and Electronic Shifter
- › Torque: 1,200 lbs./ft. Max. Net @ 1,300 RPM
- › Engine Displacement: 540"/8.8L
- › Aluminum Rear-Mounted Radiator with CAC Cooler
- › Dual Fuel Fill
- › 160 Amp Alternator
- › Rear Axle Ratio: 4.30:1
- › Goodyear Radial Tires: 275/80R/22.5
- › Pre-Wire for Supplemental Braking System
- › Polished Aluminum Wheels
- › Cushion Air Glide Suspension with Eight Outboard-Mounted Air Bags and Eight Shock Absorbers
- › Anti-Lock Braking System with Full Air Brakes
- › Automatic Traction Control
- › Exhaust Brake
- › Auto Slack Adjusters on Brakes
- › Engine Block Heater
- › Rock Shield to Radiator
- › 10,000 Lb. Hitch Receiver with Seven-Point Connector
- › Automatic Hydraulic Leveling Jacks

COCKPIT

- › Automotive Dash with Aztec Pewter Instrumentation Panel
- › CD Player/Radio with DVD Player, Sirius-Ready Compatibility, Weather Band, IR Repeater Remote
- › Power Sunvisors
- › Pilot and Co-Pilot Pull-Down Sunshades
- › Wood Framed Cabinet Doors with Smoked Glass over Front Entertainment Center System (N/A: 40SKQ)
- › Cockpit Front and Side Overhead Cabinet Doors, Top-Hinged Doors with Self-Supporting Hinges
- › Adjustable Brake and Accelerator Pedals
- › 110V, 12V and Phone Outlet
- › Color Rear Vision System with Audio and Adjustable Camera
- › Lighted VIP Smartwheel® Multiplexed Steering Wheel with Controls for Windshield Wipers, ICC and Cruise Control
- › Intermittent Windshield Wipers
- › 10-Quart Tank for Windshield Fluid with Fluid Sensor to Tank and Low Wash Indicator on Dash
- › Audible Turn Signals
- › Roof-Mounted Air Horn
- › CB Prep
- › Ultraleather™ Six-Way Power Pilot and Co-Pilot Seat with Power Footrest
- › OptimaLeather™ Pilot and Co-Pilot Seats (with Ralph Lauren Yorkshire Decor)
- › Power Steering
- › Color-Coordinated Carpeted Floor Mats

OPTIONS

- › 3-Camera Rear Vision System with Audio and Adjustable Center Camera
- › GPS System
- › Sirius Satellite Radio System (6 Months Pre-Paid Activation)
- › Interior Solar Privacy Sunscreens
- › Aladdin™ Junior System
- › 10-Disc CD Changer
- › Auxiliary Defroster

SAFETY

- › Fire Extinguisher
- › Deadbolt Lock on Entrance Door
- › 120V GFI Protected Circuit (Kitchen, Bath, Exterior)
- › LP Gas Detector
- › Smoke Detector
- › Carbon Monoxide Detector
- › Driver and Passenger Three-Point Seatbelts (Wall-Mounted)
- › Third Brake Safety Light
- › Egress Window(s)

APPLIANCES AND ACCESSORIES

- Large Four-Door Refrigerator with Ice Maker
- High-Output 3-Sealed-Burner Cooktop without Oven
- Removable Solid Surface Range Covers
- Microwave/Convection Oven
- 24" Flatscreen Stereo Color TV with Remote Control in Cockpit Overhead (N/A: 40SKQ)
- 32" Flatscreen LCD TV in Living Area Hutch (Replaces Front Cockpit TV) (40SKQ)
- 20" Color TV with Remote Control in Bedroom (N/A: 40SFT, 40SKQ, 40PRQ)
- 20" LCD Color TV with Remote Control in Bedroom (40SFT, 40SKQ, 40PRQ)
- TV Antenna
- Home Theater Surround Sound System Added to In-Dash Stereo with DVD Player
- Exterior Hook-Ups for DSS Dish and Cable
- Digital Satellite System Prep
- Interior Cable TV Hook-Up and Telephone Jacks
- Exterior Gas Line Hook-Up Prep for LP Accessories
- Washer/Dryer Prep

OPTIONS

- High-Output 3-Sealed-Burner Cooktop with Oven
- Dometic Sidewise 14 Cu. Ft. 2-Way Refrigerator with Ice Dispenser in the Door (N/A: 38PDQ, 40SFT, 40PAQ)
- Stainless Steel Package (Includes Refrigerator and Microwave)
- Central Vacuum
- Combination Washer/Dryer
- Bedroom Clock Radio AM/FM/CD/DVD Player
- 32" Flatscreen LCD TV in Front Cockpit Overhead (N/A: 40SKQ)
- Semi-Automatic Digital Satellite System
- In-Motion Digital Satellite Dish (Does Not Include Receiver) (Pre-Wire for Bedroom DSS Receiver)
- Exterior Entertainment Center (26" LCD TV/AM/FM/CD Radio with Two Speakers) (N/A: 40PAQ, 40SKQ)

INTERIOR

- New Vintage Oak Cabinetry
- Raised Panel Hardwood Cabinet Doors
- Hardwood Cabinet End Panels
- Wainscoting and Chair Rail (40SFT)
- Refrigerator Raised Panel Hardwood Inserts
- Self-Supporting Top-Hinged Overhead Storage Doors and Positive Catches on All Other Doors
- Heavy-Duty Ball Bearing Drawer Guides
- Crown Molding in Bedroom and Living Area
- Metal Interior Grab Handle on Dash at Entry Door
- Satin Nickel Cabinetry Hardware and Bath Accessories
- Polished Radius Solid Surface Kitchen Countertop with Stainless Steel Sink with Two Sink Covers (Radius Countertops N/A on 40PET)
- Polished Solid Surface Kitchen Countertop Extension (40PET)
- Pullout Countertop Extension with Drawer and Corian® Top (N/A: 36PDQ, 38PDQ, 40SKQ)
- Kitchen Galley Range Backsplash behind Cooktop, Prefabricated Ceramic Tile with Corian® Molding
- Sink and Stovetop Cover Storage Area inside Kitchen Base Cabinet
- Solid Surface Bathroom Countertop with Integrated Sink
- Lavatory Backsplash Corian® with Decorative Mirror (N/A: 40SKQ)
- Solid Surface Dinette Table Top (N/A: 40PAQ)
- Dinette Table with Hardwood Top (40PAQ)
- Solid Surface Nightstand Tops
- Kitchen Overhead Cabinets with Adjustable Shelf
- Spice Cabinet over Microwave
- Ceramic Tile in Kitchen and Bath
- Tile Entry Floor
- Designer Carpeting in Living Area and Bedroom
- Soft Touch Padded Vinyl Ceiling
- Hardwood Slide-Out Fascia with New Decorative Center Block
- Decorative Hardwood/Fabric Window Boxes Throughout Coach
- Wood Framed Headboard with Fabric Inserts
- Oversized Rear Closet Wardrobe with Mirrored Doors and Frames in Satin Nickel (N/A: 40PRQ)
- Towel Bar inside Private Bath
- Two Towel Rings in Bathroom
- Bedroom Dresser with Solid Surface Countertop
- Decorative Glass Doors for Living Room Hutch Cabinets (40SKQ)
- Hall Cabinet (40SKQ)
- Decorative Picture in Living Room (40SKQ)
- Decorative Accent Mirror (38PDQ, 40PET, 40PAQ)
- Bathroom Lavatory Mirror
- Blackout Day/Night Pleated Shades in Living Area and Bedroom, Mini Blinds in Private Bath and Kitchen
- Soil Repellant Protection on Fabric

OPTIONS

- Decors: Edwardian Bronze, Brookwood, Waters Edge, Stone Mountain
- Ralph Lauren Decor: Yorkshire
- Wood Choice: Newport Cherry and Champagne Select
- Full Tile Living Room
- Solid Surface Kitchen Sink

WINDOWS, DOORS AND AWNINGS

- Radius Flush-Mounted Dual Pane Safety Glass Dark Tinted Windows
- Front Entry Door with Removable Screen and Anti-Skid Steps
- Exterior Entry Door Grab Handle
- Metal Interior Grab Handle on Dash at Entry Door
- Automatic Front Door Awning
- Topper Slide-Out Awnings Living Area and Bedroom
- Eclipse Automatic Patio Awning
- Tinted Skylight in Bathroom with Protecta Glaze
- Window Awnings on All Slide-Out House Windows Except Slide-Out Windows under Patio Awning

OPTIONS

- Keyless Entry (Key Fob Only)
- Bedroom Window Awning on Sidewall (40PET)

APPLIANCES AND ACCESSORIES

- › Large Four-Door Refrigerator with Ice Maker
- › High-Output 3-Sealed-Burner Cooktop without Oven
- › Removable Solid Surface Range Covers
- › Microwave/Convection Oven
- › 24" Flatscreen Stereo Color TV with Remote Control in Cockpit Overhead (N/A: 4oSKQ)
- › 32" Flatscreen LCD TV in Living Area Hutch (Replaces Front Cockpit TV) (4oSKQ)
- › 20" Color TV with Remote Control in Bedroom (N/A: 4oSFT, 4oSKQ, 4oPRQ)
- › 20" LCD Color TV with Remote Control in Bedroom (4oSFT, 4oSKQ, 4oPRQ)
- › TV Antenna
- › Home Theater Surround Sound System Added to In-Dash Stereo with DVD Player
- › Exterior Hook-Ups for DSS Dish and Cable
- › Digital Satellite System Prep
- › Interior Cable TV Hook-Up and Telephone Jacks
- › Exterior Gas Line Hook-Up Prep for LP Accessories
- › Washer/Dryer Prep

OPTIONS

- › High-Output 3-Sealed-Burner Cooktop with Oven
- › Dometic Sidewise 14 Cu. Ft. 2-Way Refrigerator with Ice Dispenser in the Door (N/A: 38PDQ, 4oSFT, 4oPAQ)
- › Stainless Steel Package (Includes Refrigerator and Microwave)
- › Central Vacuum
- › Combination Washer/Dryer
- › Bedroom Clock Radio AM/FM/CD/DVD Player
- › 32" Flatscreen LCD TV in Front Cockpit Overhead (N/A: 4oSKQ)
- › Semi-Automatic Digital Satellite System
- › In-Motion Digital Satellite Dish (Does Not Include Receiver) (Pre-Wire for Bedroom DSS Receiver)
- › Exterior Entertainment Center (26" LCD TV/AM/FM/CD Radio with Two Speakers) (N/A: 4oPAQ, 4oSKQ)

INTERIOR

- › New Vintage Oak Cabinetry
- › Raised Panel Hardwood Cabinet Doors
- › Hardwood Cabinet End Panels
- › Wainscoting and Chair Rail (4oSFT)
- › Refrigerator Raised Panel Hardwood Inserts
- › Self-Supporting Top-Hinged Overhead Storage Doors and Positive Catches on All Other Doors
- › Heavy-Duty Ball Bearing Drawer Guides
- › Crown Molding in Bedroom and Living Area
- › Metal Interior Grab Handle on Dash at Entry Door
- › Satin Nickel Cabinetry Hardware and Bath Accessories
- › Polished Radius Solid Surface Kitchen Countertop with Stainless Steel Sink with Two Sink Covers (Radius Countertops N/A on 4oPET)
- › Polished Solid Surface Kitchen Countertop Extension (4oPET)
- › Pullout Countertop Extension with Drawer and Corian® Top (N/A: 36PDQ, 38PDQ, 4oSKQ)
- › Kitchen Galley Range Backsplash behind Cooktop, Prefabricated Ceramic Tile with Corian® Molding
- › Sink and Stovetop Cover Storage Area inside Kitchen Base Cabinet
- › Solid Surface Bathroom Countertop with Integrated Sink
- › Lavatory Backsplash Corian® with Decorative Mirror (N/A: 4oSKQ)
- › Solid Surface Dinette Table Top (N/A: 4oPAQ)
- › Dinette Table with Hardwood Top (4oPAQ)
- › Solid Surface Nightstand Tops
- › Kitchen Overhead Cabinets with Adjustable Shelf
- › Spice Cabinet over Microwave
- › Ceramic Tile in Kitchen and Bath
- › Tile Entry Floor
- › Designer Carpeting in Living Area and Bedroom
- › Soft Touch Padded Vinyl Ceiling
- › Hardwood Slide-Out Fascia with New Decorative Center Block
- › Decorative Hardwood/Fabric Window Boxes Throughout Coach
- › Wood Framed Headboard with Fabric Inserts
- › Oversized Rear Closet Wardrobe with Mirrored Doors and Frames in Satin Nickel (N/A: 4oPRQ)
- › Towel Bar inside Private Bath
- › Two Towel Rings in Bathroom
- › Bedroom Dresser with Solid Surface Countertop
- › Decorative Glass Doors for Living Room Hutch Cabinets (4oSKQ)
- › Hall Cabinet (4oSKQ)
- › Decorative Picture in Living Room (4oSKQ)
- › Decorative Accent Mirror (38PDQ, 4oPET, 4oPAQ)
- › Bathroom Lavatory Mirror
- › Blackout Day/Night Pleated Shades in Living Area and Bedroom, Mini Blinds in Private Bath and Kitchen
- › Soil Repellant Protection on Fabric

OPTIONS

- › Decors: Edwardian Bronze, Brookwood, Waters Edge, Stone Mountain
- › Ralph Lauren Decor: Yorkshire
- › Wood Choice: Newport Cherry and Champagne Select
- › Full Tile Living Room
- › Solid Surface Kitchen Sink

WINDOWS, DOORS AND AWNINGS

- › Radius Flush-Mounted Dual Pane Safety Glass Dark Tinted Windows
- › Front Entry Door with Removable Screen and Anti-Skid Steps
- › Exterior Entry Door Grab Handle
- › Metal Interior Grab Handle on Dash at Entry Door
- › Automatic Front Door Awning
- › Topper Slide-Out Awnings Living Area and Bedroom
- › Eclipse Automatic Patio Awning
- › Tinted Skylight in Bathroom with Protecta Glaze
- › Window Awnings on All Slide-Out House Windows Except Slide-Out Windows under Patio Awning

OPTIONS

- › Keyless Entry (Key Fob Only)
- › Bedroom Window Awning on Sidewall (4oPET)



FURNITURE

- Legless Dinette Table with Two Chairs and Two Folding Chairs (N/A: 40PAQ)
- Hardwood Dinette Table with Two Dinette Chairs and Two Folding Chairs (40PAQ)
- Roadside: Fabric Easy Bed Sofa
- Curbside: Fabric Barrel Chair and Table (36PDQ, 40PAQ)
- Curbside: Fabric Easy Bed Sofa (N/A: 40PAQ)
- Curbside: Fabric Love Seat (36PDQ)
- Queen Bed (60" x 80") with Solid Surface Nightstands

OPTIONS

- King Bed with One Nightstand (40PET, 40PDQ)
- Queen Bed Select Comfort Air Mattress
- Roadside: Fabric Hide-A-Bed with Air Mattress
- Roadside: Leather Easy Bed Sofa
- Roadside: Leather Hide-A-Bed with Air Mattress
- King Bed Select Comfort Air Mattress (40PET, 40PDQ)
- Roadside: Wraparound Computer Desk with OptimaLeather™ Euro-Recliner with Heat and Massage (38PDQ, 40PRQ, 40PDQ)

- Curbside: Leather Hide-A-Bed with Air Mattress (N/A: 36PDQ, 40PET, 40SKQ, 40PAQ)
- Curbside: Leather Magic Bed Sofa (N/A: 36PDQ, 40PET, 40SKQ, 40PAQ)
- Curbside: Leather Easy Bed Sofa (N/A: 36PDQ, 40PAQ)
- Curbside: Love Seat Sofa (36PDQ)
- Curbside: Leather J-Lounge with Drawer (N/A: 36PDQ, 40SKQ, 40PAQ)
- Curbside: Leather Recliner (40PAQ)
- Curbside: OptimaLeather™ Euro-Recliner with Ottoman, Heat and Massage (40PAQ)
- Legless Dream Dinette System with Arched Back Wood Booth Dinette (38PDQ, 40SKQ)

ELECTRICAL SYSTEMS AND LIGHTS

- 50 Amp 12V Distribution Panel and Power Cord
- Onan® 8.0 kW Quiet Diesel Generator on Manual Slide-Out
- Four 6V Deep Cycle Batteries
- Two 12V Heavy-Duty Chassis Batteries
- Battery Disconnect Switch at Front Door
- Battery Boost Switch in Cockpit
- 2,000 Watt Inverter
- Recessed Docking Lights
- Porch Light and Exterior Step Light on Same Switch
- Lighted Interior Steps
- Lights in Outside Storage Compartments with Switch on Passenger Console and Utility Bay

- 110V Outlet in Outside Storage Compartment
- Underhood Utility Light
- Convenience Center in Hallway
- Fluorescent Light(s) under Kitchen Overhead
- Fluorescent Ceiling Lights Throughout
- Decorative Lighting Satin Nickel with Swirled Glass
- Fluorescent Ceiling Lights inside Living Area Slide-Out House
- Decorative Framed Longer Galley Fluorescent Ceiling Light
- Energy Management System
- Directional Map Lights on Bottom of Front TV Cabinet (40SKQ)

- Halogen Light on Driver and Passenger Overhead
- Pre-Wire for Solar Panel
- Halogen Lights under Living Room, Dining Room, Bed Overhead and Bedroom Dresser Overhead Cabinets

OPTIONS

- Auto Generator Start
- Solar Panel
- Power Cord Reel

PLUMBING AND LP SYSTEMS

- Demand Water System and Water Pump
- 10 Gallon LP Gas/Electric Water Heater with Electronic Ignition DSI
- Single Lever Kitchen Faucet with Pullout Sprayer
- Separate Satin Nickel Faucet for Filtered Water
- Satin Nickel Bathroom Faucet
- Water Heater Bypass Valve
- Water Pump Switch in Convenience Center, Kitchen Galley and Service Bay Area
- China Toilet with Sprayer (N/A: 40SFT, 40SKQ)

- China Toilet, Electronic Thetford Silent Plus (40SFT, 40SKQ)
- Shower Inside Wet Bay with Hot/Cold Water
- No-Fuss Flush Holding Tank Rinsing System
- Gravity and Pressurized Water Fill
- One-Piece Round Shower with Reeded Glass Door (40SFT, 40PDQ, 40PRQ)
- One-Piece Neo-Angled Shower with Obscured Glass Door (N/A: 36PDQ, 40SFT, 40PDQ, 40PRQ)
- One-Piece Rectangle Shower Door with Obscured Glass (36PDQ)

- Satin Nickel Shower Door Frame with Decorative Glass
- Satin Nickel Shower Faucet with Slide Bar and Shut-Off Valve at Shower Head

OPTIONS

- RV Sani-Con Tank Drainage System (Replaces Sewer Storage)
- Water Hose Reel (N/A: 40PRQ)
- Exterior Tank Monitor Gauge in Wet Bay
- Neo-Angled Bathtub (N/A: 36PDQ)

HEATING, VENTS AND AIR CONDITIONING

- Dual 13.5M BTU Roof Air Conditioner with Ducted Air, Heat Pumps and Digital Thermostat Control
- Dual Zone Electronic Ignition Furnaces - 51M BTU (31M and 20M)
- Electronic Dash AC/Heat Climate Control System

- Fantastic 12V Attic Fan with Rain Sensor with Electronic Wall Thermostat in Kitchen
- 12V Attic Fan in Private Bath with Wall Control of Automatic Dome and Fan Power
- 12V Heater in Wet Bay
- Metal Floor Registers Satin Nickel

OPTIONS

- Fantastic 12V Attic Fan with Rain Sensor with Electronic Wall Thermostat in Bath
- Ceiling Fan in Bedroom (N/A: 36PDQ, 38PDQ)



FURNITURE

- › Legless Dinette Table with Two Chairs and Two Folding Chairs (N/A: 40PAQ)
- › Hardwood Dinette Table with Two Dinette Chairs and Two Folding Chairs (40PAQ)
- › Roadside: Fabric Easy Bed Sofa
- › Curbside: Fabric Barrel Chair and Table (36PDQ, 40PAQ)
- › Curbside: Fabric Easy Bed Sofa (N/A: 40PAQ)
- › Curbside: Fabric Love Seat (36PDQ)
- › Queen Bed (60" x 80") with Solid Surface Nightstands

OPTIONS

- › King Bed with One Nightstand (40PET, 40PDQ)
- › Queen Bed Select Comfort Air Mattress
- › Roadside: Fabric Hide-A-Bed with Air Mattress
- › Roadside: Leather Easy Bed Sofa
- › Roadside: Leather Hide-A-Bed with Air Mattress
- › King Bed Select Comfort Air Mattress (40PET, 40PDQ)
- › Roadside: Wraparound Computer Desk with OptimaLeather™ Euro-Recliner with Heat and Massage (38PDQ, 40PRQ, 40PDQ)

- › Curbside: Leather Hide-A-Bed with Air Mattress (N/A: 36PDQ, 40PET, 40SKQ, 40PAQ)
- › Curbside: Leather Magic Bed Sofa (N/A: 36PDQ, 40PET, 40SKQ, 40PAQ)
- › Curbside: Leather Easy Bed Sofa (N/A: 36PDQ, 40PAQ)
- › Curbside: Love Seat Sofa (36PDQ)
- › Curbside: Leather J-Lounge with Drawer (N/A: 36PDQ, 40SKQ, 40PAQ)
- › Curbside: Leather Recliner (40PAQ)
- › Curbside: OptimaLeather™ Euro-Recliner with Ottoman, Heat and Massage (40PAQ)
- › Legless Dream Dinette System with Arched Back Wood Booth Dinette (38PDQ, 40SKQ)

ELECTRICAL SYSTEMS AND LIGHTS

- › 50 Amp 12V Distribution Panel and Power Cord
- › Onan® 8.0 kW Quiet Diesel Generator on Manual Slide-Out
- › Four 6V Deep Cycle Batteries
- › Two 12V Heavy-Duty Chassis Batteries
- › Battery Disconnect Switch at Front Door
- › Battery Boost Switch in Cockpit
- › 2,000 Watt Inverter
- › Recessed Docking Lights
- › Porch Light and Exterior Step Light on Same Switch
- › Lighted Interior Steps
- › Lights in Outside Storage Compartments with Switch on Passenger Console and Utility Bay

- › 110V Outlet in Outside Storage Compartment
- › Underhood Utility Light
- › Convenience Center in Hallway
- › Fluorescent Light(s) under Kitchen Overhead
- › Fluorescent Ceiling Lights Throughout
- › Decorative Lighting Satin Nickel with Swirled Glass
- › Fluorescent Ceiling Lights inside Living Area Slide-Out House
- › Decorative Framed Longer Galley Fluorescent Ceiling Light
- › Energy Management System
- › Directional Map Lights on Bottom of Front TV Cabinet (40SKQ)

- › Halogen Light on Driver and Passenger Overhead
- › Pre-Wire for Solar Panel
- › Halogen Lights under Living Room, Dining Room, Bed Overhead and Bedroom Dresser Overhead Cabinets

OPTIONS

- › Auto Generator Start
- › Solar Panel
- › Power Cord Reel

PLUMBING AND LP SYSTEMS

- › Demand Water System and Water Pump
- › 10 Gallon LP Gas/Electric Water Heater with Electronic Ignition DSI
- › Single Lever Kitchen Faucet with Pullout Sprayer
- › Separate Satin Nickel Faucet for Filtered Water
- › Satin Nickel Bathroom Faucet
- › Water Heater Bypass Valve
- › Water Pump Switch in Convenience Center, Kitchen Galley and Service Bay Area
- › China Toilet with Sprayer (N/A: 40SFT, 40SKQ)

- › China Toilet, Electronic Thetford Silent Plus (40SFT, 40SKQ)
- › Shower Inside Wet Bay with Hot/Cold Water
- › No-Fuss Flush Holding Tank Rinsing System
- › Gravity and Pressurized Water Fill
- › One-Piece Round Shower with Reeded Glass Door (40SFT, 40PDQ, 40PRQ)
- › One-Piece Neo-Angled Shower with Obscured Glass Door (N/A: 36PDQ, 40SFT, 40PDQ, 40PRQ)
- › One-Piece Rectangle Shower Door with Obscured Glass (36PDQ)

- › Satin Nickel Shower Door Frame with Decorative Glass
- › Satin Nickel Shower Faucet with Slide Bar and Shut-Off Valve at Shower Head

OPTIONS

- › RV Sani-Con Tank Drainage System (Replaces Sewer Storage)
- › Water Hose Reel (N/A: 40PRQ)
- › Exterior Tank Monitor Gauge in Wet Bay
- › Neo-Angled Bathtub (N/A: 36PDQ)

HEATING, VENTS AND AIR CONDITIONING

- › Dual 13.5M BTU Roof Air Conditioner with Ducted Air, Heat Pumps and Digital Thermostat Control
- › Dual Zone Electronic Ignition Furnaces - 51M BTU (31M and 20M)
- › Electronic Dash AC/Heat Climate Control System

- › Fantastic 12V Attic Fan with Rain Sensor with Electronic Wall Thermostat in Kitchen
- › 12V Attic Fan in Private Bath with Wall Control of Automatic Dome and Fan Power
- › 12V Heater in Wet Bay
- › Metal Floor Registers Satin Nickel

OPTIONS

- › Fantastic 12V Attic Fan with Rain Sensor with Electronic Wall Thermostat in Bath
- › Ceiling Fan in Bedroom (N/A: 36PDQ, 38PDQ)

DIPLOMAT™



COME ON, FELLOW TRAVELERS. Haven't you waited long enough to drive your dream? It's your turn now. And Monaco is here to make it all happen. With high-line, high-performing coaches that lead the way in quality, comfort and safety. So grab a road atlas and climb aboard. The coach of your dreams is just ahead.



DEALER:



MONACO™

DRIVING YOUR DREAM.

91320 Coburg Industrial Way, Coburg, OR 97408 | 800 634-0855

www.monacocoach.com

Monaco Coach Corporation is traded on the NYSE under the listing MNC. © 1996, RPH, BROMOP

DIPLOMAT®



COME ON, FELLOW TRAVELERS. Haven't you waited long enough to drive your dream? It's your turn now. And Monaco is here to make it all happen. With high-line, high-performing coaches that lead the way in quality, comfort and safety. So grab a road atlas and climb aboard. The coach of your dreams is just ahead.



DEALER:



MONACO®

DRIVING YOUR DREAM.

91320 Coburg Industrial Way, Coburg, OR 97408 | 800 634-0855

www.monacocoach.com

Monaco Coach Corporation is traded on the NYSE under the listing MNC. | 0906 NPN: BROMDIP